

**APPENDIX R**  
**CASE 10-T-0139**  
**DOCUMENTATION OF CI CONSULTATIONS**  
**HAVING OCCURRED**

**REDACTED**

# Champlain Hudson Power Express

## Upland Co-Located Utility Summation Matrix

Revision Date: 06/13/2023

Segment(s)	General Location of Utility		Owner	Utility	Utility		Quality Level (A/B/C/D)
	Station (Starting Point for Parallel and Crossing Point for Perpendicular)	Station (Ending Point for Parallel)			Parallel/ Perpendicular	Description (optional)	
	70000+00	70029+00	CHG&E	OH Utility (Electric)	Parallel	Two overhead lines ~55 ft away east of tracks	B
	70000+00	70029+00	CHG&E	OH Utility (Transmission)	Parallel	OH Transmission lines	B
	70000+00	70028+10	CHG&E	UG Utility (Gas Transmission)	Parallel	Gas Transmission Line	B
	70022+90		CSX RR	Storm Drainage Pipe/Culvert	Perpendicular	48" Steel Pipe Crossing RR Tracks	B
	70029+00		CHG&E	OH Utility (Electric)	Perpendicular	OH Distribution line	B
	70029+00	70029+50	CSX RR	Storm Drainage Pipe/Culvert	Parallel	12" HDPE Pipe parallel to RR Tracks	B
	70029+10		CHG&E	OH Utility (Electric)	Perpendicular	OH Distribution line	B
	70029+50		CHG&E	UG Utility (Gas Distribution)	Perpendicular	Gas Main Crossing RR Tracks just North of Browns Crossing Rd	B
	70030+84	70037+72	CSX RR	UG Utility (Electric)	Parallel	Underground electric line for railroad infrastructure	B
	70037+60	70061+00	MCI	UG Utility (Telephone)	Parallel	UG Utility Telephone parallel to alignment	B
	70050+37		CSX RR	Storm Drainage Pipe/Culvert	Perpendicular	36" CMP Pipe Crossing RR Tracks	B
	70056+90		MCI	UG Utility (Telephone)	Perpendicular	MCI line on the east side of CSX RR tracks	B
	70059+47		CHG&E	OH Utility (Electric)	Perpendicular	Utility Pole OH Distribution line	B
	70060+50	70061+00	MCI	UG Utility (Telephone)	Parallel	UG Utility Telephone parallel to alignment	B
	70060+91		CHG&E	UG Utility (Electric)	Perpendicular	UG line and manhole	B
	70063+38		CHG&E	UG Utility (Gas Transmission)	Perpendicular	AH Gas Transmission Line	B
	70063+40		CHG&E	OH Utility (Electric)	Perpendicular	OH Distribution line	B
	70063+80		Private	Storm Drainage Pipe/Culvert	Perpendicular	Culvert on west side of alignment	B
	70067+40		Town of Catskill	Sanitary Sewer	Perpendicular	Sanitary sewer line	B
	70067+46		Town of Catskill	Storm Drainage Pipe/Culvert	Perpendicular	Storm drainage pipe parallel to sanitary	B
	70067+46	70068+73	Town of Catskill	Water line	Parallel	Water line Parallel alignment	B
	70067+64		Town of Catskill	Sanitary Sewer	Perpendicular	Sanitary sewer line	B
	70067+70		Town of Catskill	Water line	Perpendicular	Water line crossing street	B
	70067+90		CHG&E	OH Utility (Electric)	Perpendicular	OH Distribution line	B
	70067+95		Town of Catskill	Sanitary Sewer	Perpendicular	12" HDPE Sanitary sewer line	B
	70068+24		Town of Catskill	Storm Drainage Pipe/Culvert	Perpendicular	24" Storm line	B
	70068+32		Town of Catskill	Sanitary Sewer	Perpendicular	10" Sewer line	B
	70068+41		Town of Catskill	Storm Drainage Pipe/Culvert	Perpendicular	24" Storm line	B
	70068+59		Town of Catskill	Water line	Perpendicular	Water line	B
	70068+73	70070+71	Town of Catskill	Water line	Parallel	Water line on the S Side of Allen St	B
	70068+96		CHG&E	OH Utility (Electric)	Perpendicular	OH Distribution line	B
	70070+72		Town of Catskill	Storm Drainage Pipe/Culvert	Perpendicular	10' Storm collector line or culvert	B
	70071+55		CHG&E	OH Utility (Electric)	Perpendicular	OH Distribution line	B
	70072+00	70073+00	CHG&E	OH Utility (Electric)	Parallel	Alignment Parallels overhead line	B
	70080+70	70082+54	CHG&E	OH Utility (Electric)	Parallel	Pole and guy wire	B
	70082+54		CHG&E	OH Utility (Electric)	Perpendicular	OH Distribution line	B
	70083+31		CHG&E	OH Utility (Electric)	Perpendicular	OH Distribution line	B

**Champlain Hudson Power Express**  
**Upland Co-Located Utility Summation Matrix**

Revision Date: 06/13/2023

Segment(s)	General Location of Utility		Owner	Utility	Utility		Quality Level (A/B/C/D)
	Station (Starting Point for Parallel and Crossing Point for Perpendicular)	Station (Ending Point for Parallel)			Parallel/ Perpendicular	Description (optional)	
	70083+40		NYS DOT	Storm Drainage Pipe/Culvert	Perpendicular	Storm line at US9W WB off-ramp to Jefferson Height Av/Main St	B
	70085+65	70088+50	CHG&E	UG Utility (Gas)	Parallel	UG gas distribution main line (3757A-F)	B
	70088+00	70090+40	Verizon	UG Utility (Fiber)	Parallel	Underground Fiber optics and vault south of the exit ramp	B
	70088+25		NYS DOT	Storm Drainage Pipe/Culvert	Perpendicular	Storm line on Main St exit ramp to SB US-9W	B
	70088+52		CHG&E	UG Utility (Gas)	Perpendicular	UG gas distribution main line (3757A-F), crossing angle is about 45d	B
	70088+70		CHG&E	OH Utility (Electric)	Perpendicular	OH Distribution line, crossing angle is about 45d	B
	70089+55		CHG&E	UG Utility (Gas)	Perpendicular	Service gas line	B
	70089+75		CHG&E	OH Utility (Electric)	Perpendicular	Lightning	B
	70089+84		Verizon	UG Utility (Fiber)	Perpendicular	Fiber line on the south side of the Exit ramp	B
	70090+17		Town of Catskill	Water line	Perpendicular	Water valves	B
	70097+40		Town of Catskill	Storm Drainage Pipe/Culvert	Perpendicular	Catch basin, might run E/W on the N side of Bushnell Ave	B
	70097+46		CHG&E	OH Utility (Electric)	Perpendicular	Guy wire and pole	B
	70097+53		Town of Catskill	Water line	Perpendicular	Water line and valves, unknown geometry	B
	70097+62		CHG&E	OH Utility (Electric)	Perpendicular	OH Distribution line	B
	70097+73		CHG&E	UG Utility (Gas)	Perpendicular	UG gas distribution main line	B
	70099+87		Town of Catskill	Water line	Perpendicular	Water line running on the N Side of Main St	B
	70099+93		Town of Catskill	Sanitary Sewer	Perpendicular	8" VCP Sanitary line running in the N side of Main St	B
	70100+16		Verizon	UG Utility (Telephone)	Perpendicular	Utility Telephone crossing the alignment	B
	70100+27		CHG&E	OH Utility (Electric)	Perpendicular	OH Distribution line	B
	70101+64		Town of Catskill	Water Line	Perpendicular	Water line in Willow Ln	B
	70101+85		Town of Catskill	Storm Sewer	Perpendicular	18" HDPE Storm Sewer Crossing in Willow Ln	B
	70101+90		CHG&E	UG Utility (Gas)	Perpendicular	UG gas distribution main line	B
	70102+03		CHG&E	OH Utility (Electric)	Perpendicular	OH Electric line running on the south side of Willow Ln (E/W)	B
	70103+10		CHG&E	UG Utility (Gas Transmission)	Perpendicular	AH Gas Transmission Line South of Willow Ln, line runs NW/SE	B
	70103+80	70111+00	MCI	UG Utility (Fiber)	Parallel	Fiber line within limits of work	B
	70106+50	70109+84	Town of Catskill	Water line	Parallel	Water line	B
	70109+84	70111+65	Town of Catskill	Water line	Parallel	Water line	B
	70109+73	70110+00	CSX RR	Storm Drainage Pipe/Culvert	Parallel	18" CMP Storm Drainage pipe parallel on normal direction within 4' from CL to CL @ Depot St/Newberry	B
	70109+84		Town of Catskill	Water Line	Perpendicular	Crossing RR tracks along North side of Newberry St	B
	70110+17		CHG&E	OH Utility (Electric)	Perpendicular	Secondary (1 line). Crosses RR tracks S of Newberry St	D
	70110+22		CHG&E	OH Utility (Electric)	Perpendicular	OH Distribution line	B
	70110+93	70111+18	CSX RR	Storm Drainage Pipe/Culvert	Parallel	18" HDPE Storm Drainage pipe parallel on normal direction within 4' from CL to CL @ Depot St/Newberry	B
	70111+08	70115+00	CHG&E	UG Utility (Electric)	Parallel	UG electric line with fiber, within limits of work	B
	70111+17		CHG&E	UG Utility (Electric)	Perpendicular	UG electric line	B
	70111+20		MCI	UG Utility (Fiber)	Perpendicular	Fiber line within limits of work	B
	70111+20	70114+00	MCI	UG Utility (Fiber)	Parallel	Fiber line within limits of work	B
	70111+65	70114+00	Town of Catskill	Water line	Parallel	Water line	B

**Champlain Hudson Power Express**  
**Upland Co-Located Utility Summation Matrix**

Revision Date: 06/13/2023

Segment(s)	General Location of Utility		Owner	Utility	Utility		Quality Level (A/B/C/D)
	Station (Starting Point for Parallel and Crossing Point for Perpendicular)	Station (Ending Point for Parallel)			Parallel/ Perpendicular	Description (optional)	
	70111+67		Town of Catskill	Water Line	Perpendicular	Crossing RR tracks along North side of Newberry St	B
	70112+20		CHG&E	UG Utility (Electric)	Perpendicular	UG electric line	B
	70113+21		MCI	UG Utility (Fiber)	Perpendicular	Fiber line on west side of tracks	B
	70114+71		CHG&E	UG Utility (Electric)	Perpendicular	UG electric line	B
	70118+25	70120+00	Town of Catskill	Water line	Parallel	Water line, out of Limits of work	B
	70119+00	70120+50	CSX RR	Storm Drainage Pipe/Culvert	Parallel	Culvert parallel to alignment	B
	70120+05	70138+00	CHG&E	OH Utility (Electric)	Parallel	OH Utility paralleling	B
	70124+00	70126+33	CHG&E	OH Utility (Electric)	Parallel	OH Utility paralleling	B
	70125+25	70126+20	Town of Catskill	Sanitary Sewer	Parallel	42" RCP Sanitary sewer line	B
	70133+25		CSX RR	Storm Drainage Pipe/Culvert	Perpendicular	12" PVC Alignment is South of Culvert	B
	70133+75		CSX RR	Storm Drainage Pipe/Culvert	Perpendicular	36"/24" CMP Alignment is South of Culvert	B
	70133+75	70135+20	CSX RR	Storm Drainage Pipe/Culvert	Parallel	(2) CMP Alignment is South of Culvert	B
	70134+05	70137+22	CHG&E	UG Utility (Electric)	Parallel	UG electric line from pole at Cauterskill Ave to Nussbickel Bros. property	B
	70135+88		CHG&E	UG Utility (Electric)	Perpendicular	UG electric line to lighting pole	B
	70137+25		CHG&E	UG Utility (Electric)	Perpendicular	Utility pole	B
	70138+38		CHG&E	OH Utility (Electric)	Perpendicular	OH Utility crossing CSX RR along Cauterskill Ave E/W	B
	70140+38		CSX RR	Storm Drainage Pipe/Culvert	Perpendicular	8" PVC Sewer Line in 8" HDPE Casing Crossing RR Tracks at Cauterskill Ave	B
	70143+93	70145+25	Town of Catskill	Water Line	Parallel	Water Line, crosses CL @ STA 7014350	B
	70144+11		Town of Catskill	Sanitary Sewer	Perpendicular	Sanitary and Drainage manholes	D
	70144+25	70145+27	CHG&E	UG Utility (Gas)	Parallel	Gas Distribution line along South side of Route 9W. Crosses alignment	B
	70144+50		CHG&E	OH Utility (Electric)	Perpendicular	~4 OH electric lines	B
	70144+43		NYS DOT	UG Utility (Electric)	Perpendicular	(3) Empty conduits	B
	70144+48		Time Warner	UG Utility (Fiber)	Perpendicular	Along south side of US 9W	B
	70144+55	70147+00	Town of Catskill	Water Line	Parallel	Water Line, crosses CL @ STA 7014350	B
	70144+63	70147+11	CHG&E	OH Utility (Electric)	Parallel	~4 OH electric lines	B
	70144+66	70146+16	CHG&E	UG Utility (Electric)	Parallel	UG service line	B
	70146+53		CHG&E	UG Utility (Gas)	Perpendicular	UG service line	B
	70146+62		CHG&E	OH Utility (Electric)	Perpendicular	Pole and OH line	B
	70147+24		CHG&E	UG Utility (Gas)	Perpendicular	UG service line	B
	70148+70	70316+00	MCI	UG Utility (Fiber)	Parallel	F/O along East side of RR Tracks	B
	70148+97		MCI	UG Utility (Telephone)	Perpendicular	Aerial to Underground at location	B
	70154+22		CHG&E	OH Utility (Electric)	Perpendicular	OH electric line crossing about 45d	B
	70166+00		CSX RR	Storm Drainage Pipe/Culvert	Perpendicular	40" / 24" CMP Concrete Arch Crossing RR Tracks	B
	70176+25		CSX RR	Storm Drainage Pipe/Culvert	Perpendicular	(2) 30" CMP culverts. 26' O/S from CL to FES	B
	70183+00		CSX RR	Storm Drainage Pipe/Culvert	Perpendicular	30" Wide Conc. Box Concrete Box Crossing RR Tracks	B
	70192+75	70226+50	AT&T	UG Utility (Telephone)	Parallel	F/O along East side of RR Tracks	B
	70206+20	70207+20	CSX RR	UG Utility (Electric)	Parallel	RR Electric Boxes and Controls, O/S 20' from CL	B

**Champlain Hudson Power Express**  
**Upland Co-Located Utility Summation Matrix**

Revision Date: 06/13/2023

Segment(s)	General Location of Utility		Owner	Utility	Utility		Quality Level (A/B/C/D)
	Station (Starting Point for Parallel and Crossing Point for Perpendicular)	Station (Ending Point for Parallel)			Parallel/ Perpendicular	Description (optional)	
	70209+50	70209+75	Town of Catskill	Sanitary Sewer	Parallel	18" CMP Sanitary sewer line	B
	70190+00	70223+00	MCI	UG Utility (Fiber)	Parallel	F/O along East side of RR Tracks	B
	70213+60		CSX RR	Storm Drainage Pipe/Culvert	Perpendicular	18" CMP CMP Culvert crossing RR Tracks, FES is O/S 23' off CL	B
	70219+75		CSX RR	Storm Drainage Pipe/Culvert	Perpendicular	18" CMP CMP Culvert crossing RR Tracks	B
	70223+30		CSX RR	Storm Drainage Pipe/Culvert	Perpendicular	18" CMP CMP Culvert crossing RR Tracks	B
	70225+02		CSX RR	Storm Drainage Pipe/Culvert	Perpendicular	12" CMP Culvert	B
	70225+25		CSX RR	Storm Drainage Pipe/Culvert	Perpendicular	12" CMP Culvert	B
	70225+60		CSX RR	Storm Drainage Pipe/Culvert	Perpendicular	12" CMP Culvert	B
	70226+15		CSX RR	Storm Drainage Pipe/Culvert	Perpendicular	12" CMP Culvert	B
	70226+50		AT&T	UG Utility (Telephone)	Perpendicular	Telephone Line crossing de the alignment	B
	70226+50	70235+00	AT&T	UG Utility (Telephone)	Parallel	F/O along East side of RR Tracks	B
	70228+80		CSX RR	Storm Drainage Pipe/Culvert	Perpendicular	18" HDPE Culvert	B
	70229+00		CSX RR	Storm Drainage Pipe/Culvert	Perpendicular	12" CMP Culvert	B
	70229+10		CSX RR	Storm Drainage Pipe/Culvert	Perpendicular	18" CMP Culvert	B
	70230+50		CSX RR	Storm Drainage Pipe/Culvert	Perpendicular	18" CMP Culvert	B
	70231+50		CSX RR	Storm Drainage Pipe/Culvert	Perpendicular	15" CMP Culvert	B
	70235+00		AT&T	UG Utility (Telephone)	Perpendicular	Telephone Line crossing de the alignment	B
	70235+00	70267+00	AT&T	UG Utility (Telephone)	Parallel	F/O along East side of RR Tracks	B
	70246+15		CSX RR	Storm Drainage Pipe/Culvert	Perpendicular	18" CMP Culvert crossing RR Tracks	B
	70250+00	70303+00	MCI	UG Utility (Fiber)	Parallel	F/O along East side of RR Tracks	B
	70256+05		CSX RR	Storm Drainage Pipe/Culvert	Perpendicular	18" CMP Culvert crossing RR	B
	70261+40		CSX RR	Storm Drainage Pipe/Culvert	Perpendicular	12" CMP Culvert crossing RR Tracks	B
	70267+10		AT&T	UG Utility (Fiber)	Perpendicular	Fiber Optic At Holcim Soccer Fields, CSX RR MP 107	B
	70276+87		CHG&E	OH Utility (Electric)	Perpendicular	OH Electric line	B
	70276+97	70277+39	CSX RR	Storm Drainage Pipe/Culvert	Parallel	15" HDPE Culvert Crossing Embought RD East of RR Tracks	B
	70277+37		CHG&E	OH Utility (Electric)	Perpendicular	OH electric line to Cementon	B
	70277+50	70286+00	CHG&E	UG Utility (Electric)	Parallel	UG line along access road (7A-07-RTE)	B
	70278+40		CHG&E	OH Utility (Electric)	Perpendicular	OH electric line to Cementon	B
	70279+20		CSX RR	Storm Drainage Pipe/Culvert	Perpendicular	40" RCP Culvert crossing RR Tracks	B
	70279+70		CSX RR	Storm Drainage Pipe/Culvert	Perpendicular	35" HDPE Culvert crossing RR Tracks	B
	70281+50		CSX RR	Storm Drainage Pipe/Culvert	Perpendicular	12" CPP Culvert crossing RR Tracks	B
	70283+00	70290+00	Private	OH Utility (Telephone)	Parallel	Utility Telephone Parallel to alignment	B
	70296+00		CSX RR	Storm Drainage Pipe/Culvert	Perpendicular	24" CMP Culvert for Access to RR Controls	B
	70296+70	70301+40	CSX RR	UG Utility (Electric)	Parallel	CSX RR Electrical and Controls	B
	70296+90	70297+05	CSX RR	Storm Drainage Pipe/Culvert	Parallel	10" PVC Culvert for Access to RR Controls	B
	70297+25	70297+50	CSX RR	Storm Drainage Pipe/Culvert	Parallel	24" HDPE Culvert for Access to RR Controls	B
	70297+75	70301+00	Private	UG Utility (Telephone)	Parallel	OH Electric & Phone	B

**Champlain Hudson Power Express**  
**Upland Co-Located Utility Summation Matrix**

Revision Date: 06/13/2023

Segment(s)	General Location of Utility		Owner	Utility	Utility		Quality Level (A/B/C/D)
	Station (Starting Point for Parallel and Crossing Point for Perpendicular)	Station (Ending Point for Parallel)			Parallel/ Perpendicular	Description (optional)	
	70298+25	70298+75	CSX RR	Storm Drainage Pipe/Culvert	Parallel	18" HDPE Culvert for Access to RR Controls	B
	70300+50	70300+75	CSX RR	Storm Drainage Pipe/Culvert	Parallel	24" HDPE Culvert for Access to RR Controls	B
	70306+00		CSX RR	Storm Drainage Pipe/Culvert	Perpendicular	24" CMP Culvert for Access to RR Controls	B
	70308+00		CSX RR	Storm Drainage Pipe/Culvert	Perpendicular	36" CMP Culvert for Access to RR Controls	B
	70310+00		Private	OH Utility (Electric)	Perpendicular	(4) Utility poles	B
	70323+41		CSX RR	Storm Drainage Pipe/Culvert	Perpendicular	5' Wide X 1' Tall Stone Box Culvert for Access to RR Controls	B
	70329+40		CSX RR	Storm Drainage Pipe/Culvert	Perpendicular	48" CMP Culvert for Access to RR Controls	B
	70331+00		Private	Conveyor	Perpendicular	Conveyor	B
	70332+76		CHG&E	OH Utility (Electric)	Perpendicular	Pole and OH line	B
	70333+25	70334+10	Private	Storm Drainage Pipe/Culvert	Parallel	24" CMP Culvert crossing RR Tracks	B
	70335+00		Private	OH Utility (Electric)	Perpendicular	OH Electric	B
	70335+75	70336+50	Private	Storm Drainage Pipe/Culvert	Parallel	24" CMP Culvert Parallel to alignment	B
	70336+50		Private	Storm Drainage Pipe/Culvert	Perpendicular	24" CMP Culvert crossing RR Tracks	B
	70345+90	70346+40	Private	Storm Drainage Pipe/Culvert	Parallel	24" HDPE crossing RR Tracks	B
	70347+30	70348+00	Private	Storm Drainage Pipe/Culvert	Parallel	30" RCP crossing RR Tracks	B
	70348+10		Verizon	OH Utility (Telephone)	Perpendicular	(2) Utility Telephone crossing the alignment	D
	70353+35		CSX RR	Storm Drainage Pipe/Culvert	Perpendicular	36" CMP Culvert crossing RR Tracks, crosses alignment	B
	70377+25		Private	Storm Drainage Pipe/Culvert	Perpendicular	Culvert crossing RR Tracks	B
	70391+13		CHG&E	OH Utility (Electric)	Perpendicular	(2) Electric line crossing the alignment	B
	70391+20		CSX RR	Storm Drainage Pipe/Culvert	Perpendicular	30" CMP crossing RR Tracks	B
	70391+64		Private	Storm Drainage Pipe/Culvert	Perpendicular	48" RCP crossing RR Tracks	B
	70392+28		CHG&E	OH Utility (Electric)	Perpendicular	Pole and guy wire	B
	70393+25	70406+15	CHG&E	OH Utility (Electric)	Parallel	OH Distribution line	B
	70399+75		Private	Storm Drainage Pipe/Culvert	Perpendicular	24" HDPE crossing RR Tracks	B
	70400+02	70415+00	Verizon	OH Utility (Telephone)	Parallel	Fiber & Electric paralleling	D
	70403+50	70405+20	CHG&E	OH Utility (Electric)	Parallel	Electric line paralleling alignment	B
	70405+00		NYS DOT	Storm Drainage Pipe/Culvert	Perpendicular	24" CMP Culvert crssing Route 9W	B
	70407+00	70410+35	Verizon	OH Utility (Telephone)	Parallel	Fiber & Electric paralleling	D
	70414+25		NYS DOT	Storm Drainage Pipe/Culvert	Perpendicular	24" CMP Culvert crssing Route 9W. FES is off 37' from CL	B
	70419+92	70452+00	CHG&E	OH Utility (Electric)	Parallel	OH Electric and Telephone lines, the phone is 10' off CL, crossing at STA 70421+51	B
	70420+43		CHG&E	OH Utility (Electric)	Perpendicular	Pole and guy wire	B
	70422+05		CHG&E	OH Utility (Electric)	Perpendicular	Pole and guy wire	B
	70424+50	70425+10	Private	Storm Drainage Pipe/Culvert	Parallel	10" CMP Culvert for Private Access, ~8' off alignment	B
	70427+20		Private	Storm Drainage Pipe/Culvert	Perpendicular	12" CMP Culvert crossing Alpha Blvd	B
	70436+50		Private	Storm Drainage Pipe/Culvert	Perpendicular	24" Steel Pipe crossing Alpha Blvd	B
	70438+27		CHG&E	OH Utility (Electric)	Perpendicular	OH Electric line crossing the alignment	B
	70438+30		Private	Storm Drainage Pipe/Culvert	Perpendicular	12" Steel Pipe crossing Alpha Blvd	B

## Champlain Hudson Power Express

### Upland Co-Located Utility Summation Matrix

Revision Date: 06/13/2023

Segment(s)	General Location of Utility		Owner	Utility	Utility		Quality Level (A/B/C/D)
	Station (Starting Point for Parallel and Crossing Point for Perpendicular)	Station (Ending Point for Parallel)			Parallel/ Perpendicular	Description (optional)	
	70439+00	70440+50	CHG&E	OH Utility (Electric)	Parallel	OH Electric and Telephone lines, the pole is 6'-10' off CL	B
	70439+30		Verizon	OH Utility (Telephone)	Perpendicular	Fiber crossing the alignment	D
	70440+46		CHG&E	UG Utility (Electric)	Perpendicular	UG Electric line	B
	70440+86		Private	UG Utility (Gas)	Perpendicular	CO2 line crosses the alignment	B
	70441+57	70449+00	NYSDOT	Storm Drainage Pipe/Culvert	Parallel	24" HDPE Culvert parallel to the alignment	B
	70451+25		CHG&E	OH Utility (Electric)	Perpendicular	UG Electric line crossing	B
	70452+52		CHG&E	UG Utility (Electric)	Perpendicular	UG Electric line crossing	B

Utility quality level defined as follows:

Four separate quality levels of subsurface utility facility information are generally recognized and are as follows:

Quality Level B (QLB): Quality Level B is the second highest degree of accuracy. The information shown on the plans has been obtained through the application of appropriate surface geophysical methods (i.e., underground cameras, radar, sonar, tone outs, etc.) to identify the existence and appropriate horizontal position of subsurface utility facilities. Quality Level B data are reproducible by surface geophysics at any point of their depiction. The information was surveyed to applicable tolerances and reduced onto the plans. No excavations were performed. (Shown as QLB)

Quality Level C (QLC): Quality Level C is the third highest degree of accuracy. The information shown on the plans has been obtained by surveying and plotting visible above-ground utility features and by using professional judgement in correlating this information to Quality Level D information. (Shown as QLC)

Quality Level D (QLD): Quality Level D is the lowest degree of accuracy. The information shown on the plans was derived solely from existing NYSDOT and/or utility company records or recollections. (Shown as QLD)

**Champlain Hudson Power Express  
Upland Co-Located Infrastructure  
Fact Sheet**

**Project Background**

- The Champlain Hudson Power Express (CHPE) is a 339-mile underground and underwater high voltage direct current (HVDC) electric transmission line that will import up to 1,250 MW of renewable power from Canada and send it to the New York City metro area.
- Transmission Developers Inc. (TDI) is the developer of the project.
- TDI is owned by Blackstone, a company based in New York.
- The transmission line is fully permitted at the State and Federal level and has been under development for roughly 10 years.
- The upland portion of the transmission line will be located primarily within transportation corridor (railway or highway) rights-of-way.

**Construction Timing & EM&CP**

- Construction is anticipated for 2022 -2025
- A map of the Project is included as Attachment A.
- Prior to construction commencing, CHPE must file an Environmental Management & Construction Plan (EM&CP) and receive approval from the State for this segment prior to installing the transmission line cables. The EM&CP will include detailed construction means and methods, and schedule. The EM&CP will be subject to public review and your organization will have the opportunity to review it before it becomes final.



- In preparation for that filing, TDI needs to coordinate with owners co-located infrastructure (CI) along this permitted route.
- TDI would like to (1) establish a contact with someone at your company/town who is responsible for this CI; (2) understand your process for discussing utility crossings; and (3) answer questions.

### **Overview of CI crossings and CHPE construction**

- The underground portion of the buried transmission line will be installed in a trench approximately three (3) feet wide and five (5) feet deep and will require minimal or no maintenance during its 60+ year operational life (Typical trench detail - Attachment B).
- Within the trench, the cables will be installed in plastic conduit. There will also be a fiber optic cable installed within the trench.
- Proposed underground installation will be primarily in the shoulders of roadways, under the road's pavement or along the edge of the Canadian Pacific or CSX railroad rights-of-way.
- Once the cables are installed, the ground will be restored.
- Directly over the transmission lines, vegetation maintenance will be required to ensure deep rooted trees do not grow. Otherwise, no maintenance is needed.
- TDI has worked closely with the local towns, NYSDOT, and the Canadian Pacific and CSX railroads regarding CHPE, and it is coordinating the final design with them.
- Depending on the depth of the existing overland CI infrastructure, if within the 15 ft depth range, our preferred approach is to install our HVDC cables

under all buried infrastructure. TDI will accomplish that by working with the CI-owners to establish the best methodology for exposing, supporting, and performing our cable installation under the existing infrastructure. (Typical crossing under CI - Attachment C)

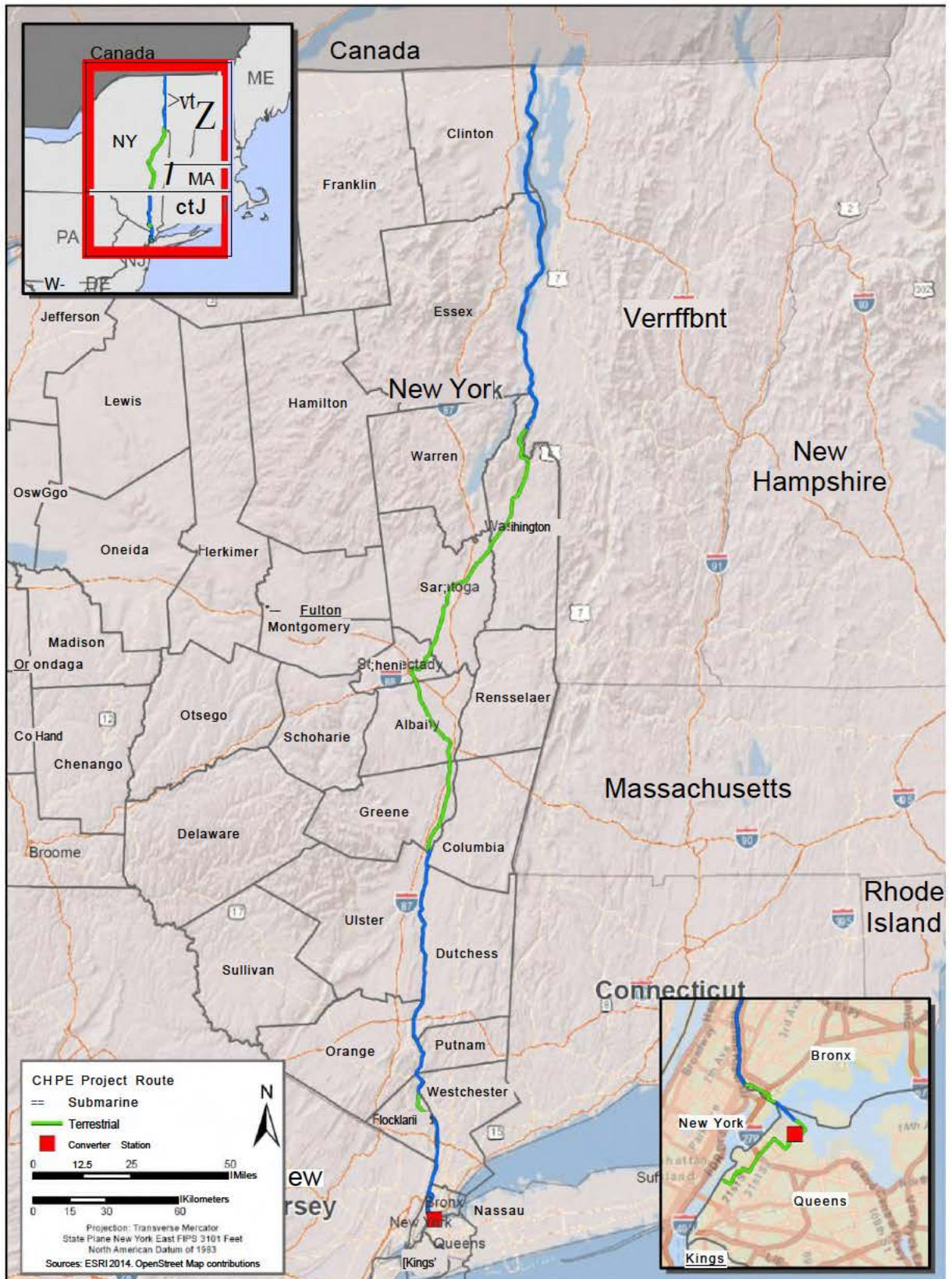
- Our proposal for crossing under CI will follow industry standard crossing methods. Adequate temporary construction supports will be provided for the exposed co-located utilities below grade.
- For deeper CI (usually greater than 15ft) or when there is significant concentration of CI infrastructure within a particular area, horizontal directional drilling (HDD) will be employed to cross under the existing utilities.
- For proposed HDDs, two bored conduits approximately separated at a minimum distance of 15 ft will be installed following the required depth to house the HVDC cables.
- In the event TDI cannot install its cable conduit under buried infrastructure, it will cross over the existing CI utilities via open trench, provided that the minimum cover of 60 inches can be provided over the proposed HVDC cables in roadway and 30 inches of cover in roadside, other vegetated areas and within railroad right-of-way per the below detail (Typical crossing over CI - Attachment D).
- In crossing the existing co-located utilities, TDI and their contractors shall also install the proposed HVDC cables with at least the minimum clearance criteria specified by each individual utility owner.
- Regarding proposed trench installation over existing large municipal storm culverts, an underground utility bridging support structure will be

constructed to allow the proposed HVDC cables to be self-supported across the span in the event the storm culverts require future repair or replacement. (Typical CI support- Attachment E.)

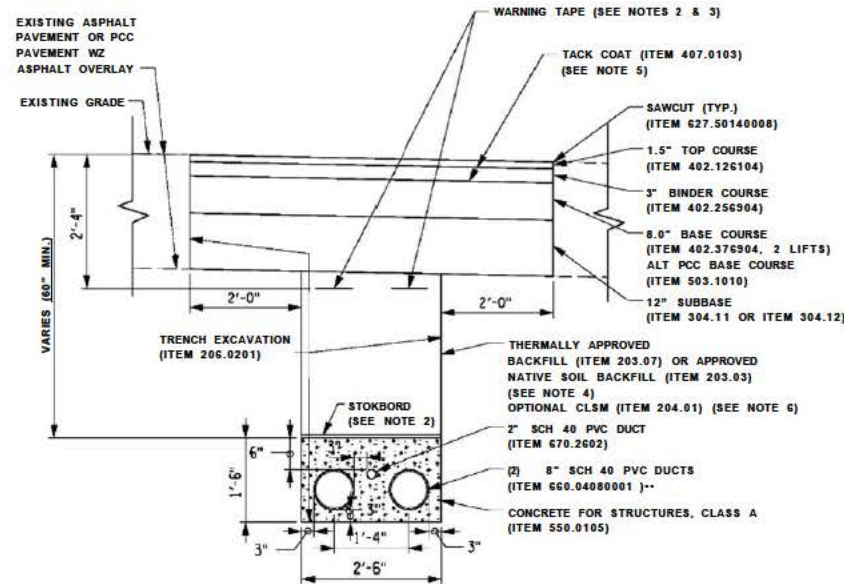
- As part of development of a crossing plan for your CI, TDI will work with the respective CI owners, to:
  - o Establish and conduct a subsurface utility survey to determine the precise location of the infrastructure within the limits of the proposed CHPE cable installation, including:
    - Depth from roadway and/or ground surface
    - Physical width and footprint occupied by the CI
    - Existence of CI supporting structures to be avoided
  - o Confirm proposed crossing installation including the requirements for CI temporary support.
  - o Eventually, based on this information, TDI will work with each CI owner to consummate a formal CI agreement as necessary.



# Attachment A



# Attachment B



TYPICAL FLAT CABLE ALIGNMENT IN DUCTBANK  
TRENCH CROSS SECTION (ROADWAY INSTALLATION)

SCALE: 1" = 2'

ITEM	DESCRIPTION
206.0201	EMBANKMENT IN PLACE
206.0201	SELECT GRANULAR FILL
206.0201	CONTROLLED LOW STRENGTH MATERIAL
206.0201	TRENCH AND CULVERT EXCAVATION
304.11	SUBBASE COURSE, TYPE 1
304.12	SUBBASE COURSE, TYPE 2
402.1261	12.5 FI TOP COURSE HMA, 60 SERIES COMPACTION
402.2562	25 F9 BINDER COURSE HMA, 60 SERIES COMPACTION
402.3763	37.5 F9 BASE COURSE HMA, 60 SERIES COMPACTION
407.0103	STRAIGHT TACK COAT
555.0105	CONCRETE FOR STRUCTURES, CLASS A
627.50	CUTTING PAVEMENT
660.04	FURNISH AND INSTALL PVC UTILITY CONDUIT 8 INCH
670.2602	RIGID PLASTIC CONDUIT, 2"

-SPECIAL SPEC  
-SPECIAL NOTE:

FOLLOW SPECIAL SPECIFICATION 660.04060001. CONDUIT  
SIZE, FITTINGS AND CONNECTIONS TO BE REVISED TO 8"  
AND SCHEDULE TO BE SCH 40.

## NOTES:

1. FILL MATERIAL SHALL HAVE THERMAL RESISTIVITY  
OF 1.0 KcmZW OR LESS.
2. FITTINGS, CONNECTIONS, WARNING TAPE, AND STOKBORD  
WILL BE INCLUDED UNDER  
ITEM 660.04080001.
3. WARNING TAPE DEPTH TO MEET THE REQUIREMENTS  
OF NEC SECTION 300.5(D)(3).
4. FOR INSTALLATION NOT LOCATED IN ROADWAYS.  
APPROVED NATIVE SOIL BACKFILL  
WILL EXTEND TO WITHIN FOUR (4) INCHES OF  
EXISTING GRADE.
5. TACK COAT SHALL BE APPLIED TO ALL EXPOSED  
EDGES AND BETWEEN EVERY LIFT.

APPROVED ON:	APPROVED ON:
SEALING STAMP:	SEALING STAMP:

IT IS A VIOLATION OF LAW FOR ANY PERSON, UNLESS THEY ARE  
ACTING UNDER THE DIRECTION OF A LICENSED PROFESSIONAL  
ENGINEER, ARCHITECT, LANDSCAPE ARCHITECT, OR LAND SURVEYOR,  
TO ALTER AN ITEM IN ANY WAY. IF AN ITEM BEARING THE STAMP OF  
A LICENSED PROFESSIONAL IS ALTERED, THE ALTERING ENGINEER,  
ARCHITECT, LANDSCAPE ARCHITECT, OR LAND SURVEYOR SHALL SIGN  
THE DOCUMENT AND INCLUDE THE NOTATION ALTERED BY FOLLOWED  
BY THEIR SIGNATURE, THE DATE OF SUCH ALTERATION, AND A  
SPECIFIC DESCRIPTION OF THE ALTERATION.

REVISIONS			
DATE	DESCRIPTION	BY	CHK

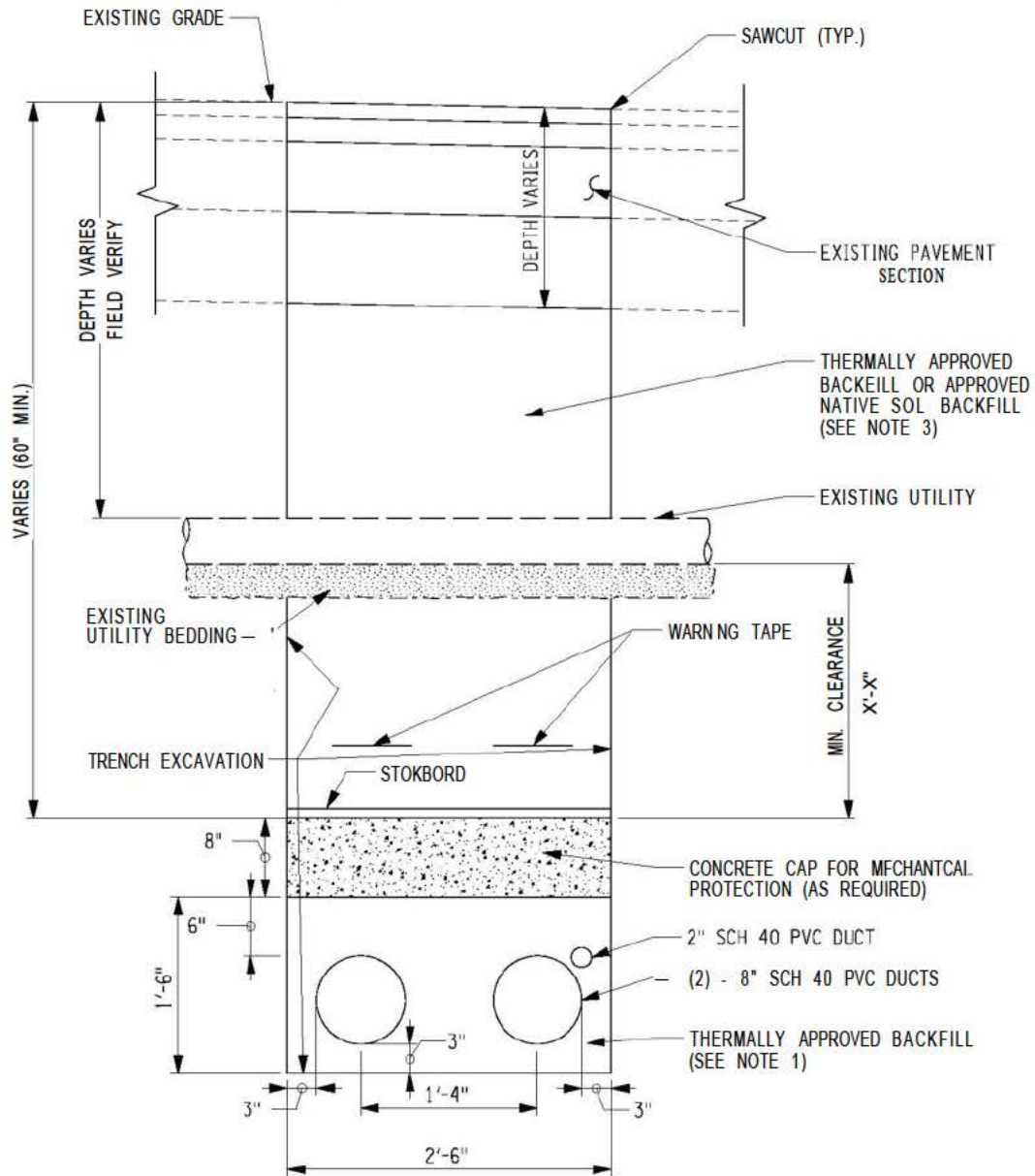
TOUOKSIOHOCVELOHKS.HC.  
1301 AVENUE OF THE AMERICAS  
NEW YORK, NY 10019 6022

**A=COM**

TITLE OF PROJECT CLAMPAIR HUDSONPOTER EXPRESS	CONTRACT NUMBER 60323056
LOCATION OF PROJECT	DATE 03/04/2021
DRW. OR ORIGINATOR TYPICAL TRENCH CROSS SECTION WITH PVC CONDUIT IN DXTBAM	DRAWING NUMBER



# Attachment C



## TYPICAL UTILITY CROSSING DETAIL

### NOTES:

NOT TO SCALE

1. FILL MATERIAL SHALL HAVE THERMAL RESISTIVITY OF 1.0 K\*m/W OR LESS.
2. WARNING TAPE DEPTH TO MEET THE REQUIREMENTS OF NEC SECTION 300.5(D)(3).
3. FOR INSTALLATION NOT LOCATED IN ROADWAYS, APPROVED NATIVE SOIL BACKFILL WILL EXTEND TO WITHIN FOUR FEET OF EXISTING GRADE.

CHAMPLAIN HUDSON POWER EXPRESS TRANSMISSION DEVELOPERS, INC.	PROJECT TITLE	LOCATIONS
	DRAWING TITLE	DATE: 07/07/2020
<b>A&amp;COM</b>	TYPICAL UTILITY CROSSING DETAIL	CRAWNCHUMBER FIG XX

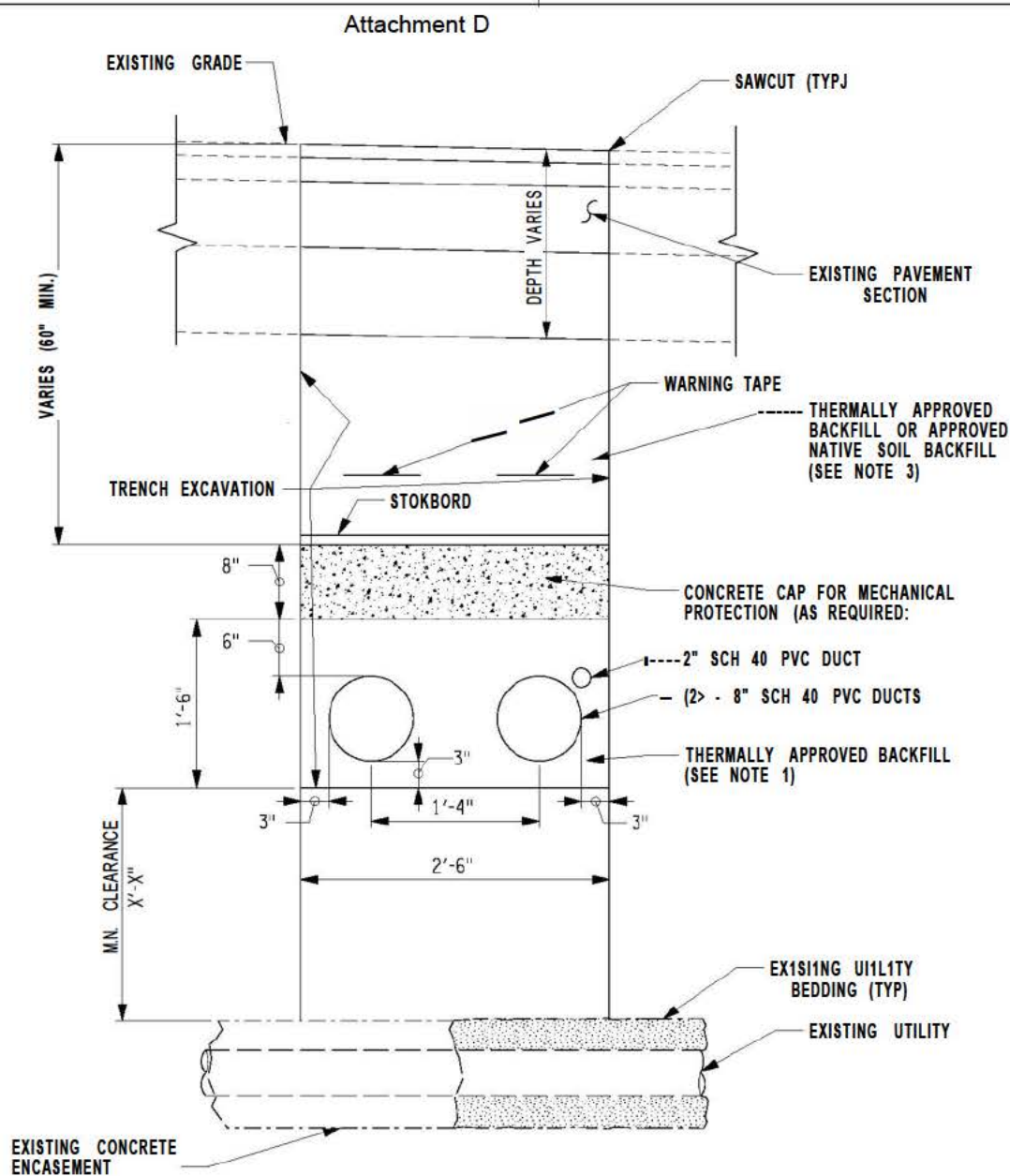
DESIGNED BY:

CHECKED BY:

DESIGNED BY:

CHECKED BY:

DESIGN SUPERVISOR:



### TYPICAL UTILITY CROSSING OVER DETAIL

#### NOTES:

NOT TO SCALE

1. FILL MATERIAL SHALL HAVE THERMAL RESISTIVITY OF 1.0 K'm/W OR LESS.
2. WARNING TAPE DEPTH TO MEET THE REQUIREMENTS OF NFC SECTION 300.5(D)(3).
3. FOR INSTALLATION NOT LOCATED IN ROADWAYS, APPROVED NATIVE SOIL BACKFILL WILL EXTEND TO WITHIN FOUR (4) INCHES OF EXISTING GRADE.

PROJECT TITLE LOCATIONS		
CHAMPLAIN HUDSON POWER EXPRESS TRANSMISSION DEVELOPERS, INC.	ORAMING TITLE	ATE: 07/07/2020
ASCOR	TYPICAL UTILITY CROSSING OVER DETAIL	OKAMINGNUWBIR:
		FIG XX

## Attachment E

**AZCOM**

AECUM U.S.A., IX  
 0 British American Blvd.  
 Latham, NY 12110

PROJECT NO. 00220006

Prepared By: IMP Date: 12/1/2020

Reviewed By: MWO Date: 12/1/2020

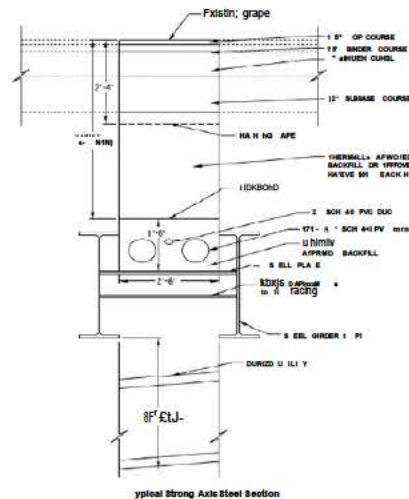
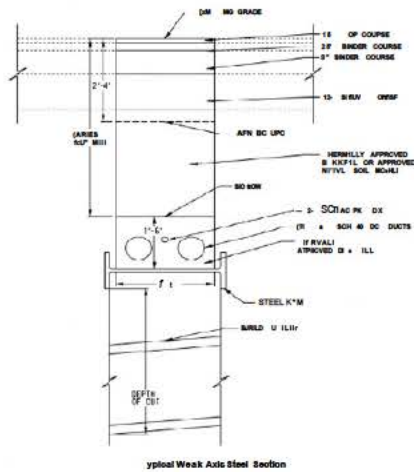
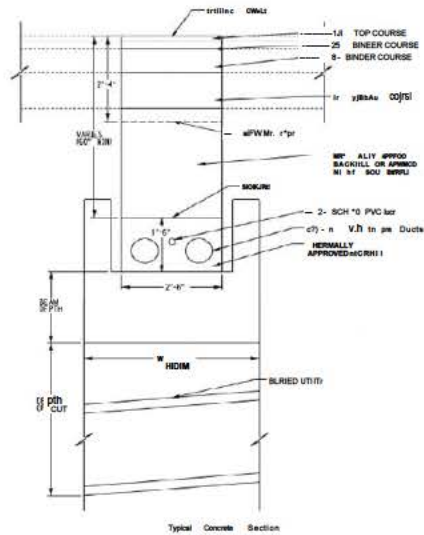
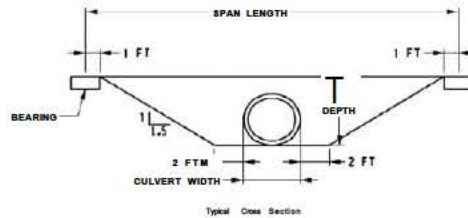
Approved By: \_\_\_\_\_ Date: \_\_\_\_\_

**CALCULATION SHEET**

Client TDI \_\_\_\_\_ Subject \_\_\_\_\_ Underground \_\_\_\_\_ Liability Support \_\_\_\_\_

Proj# CHPE \_\_\_\_\_

Description:	Preliminary	Review of Utility Support Options	over	culvert replacement
Details:				



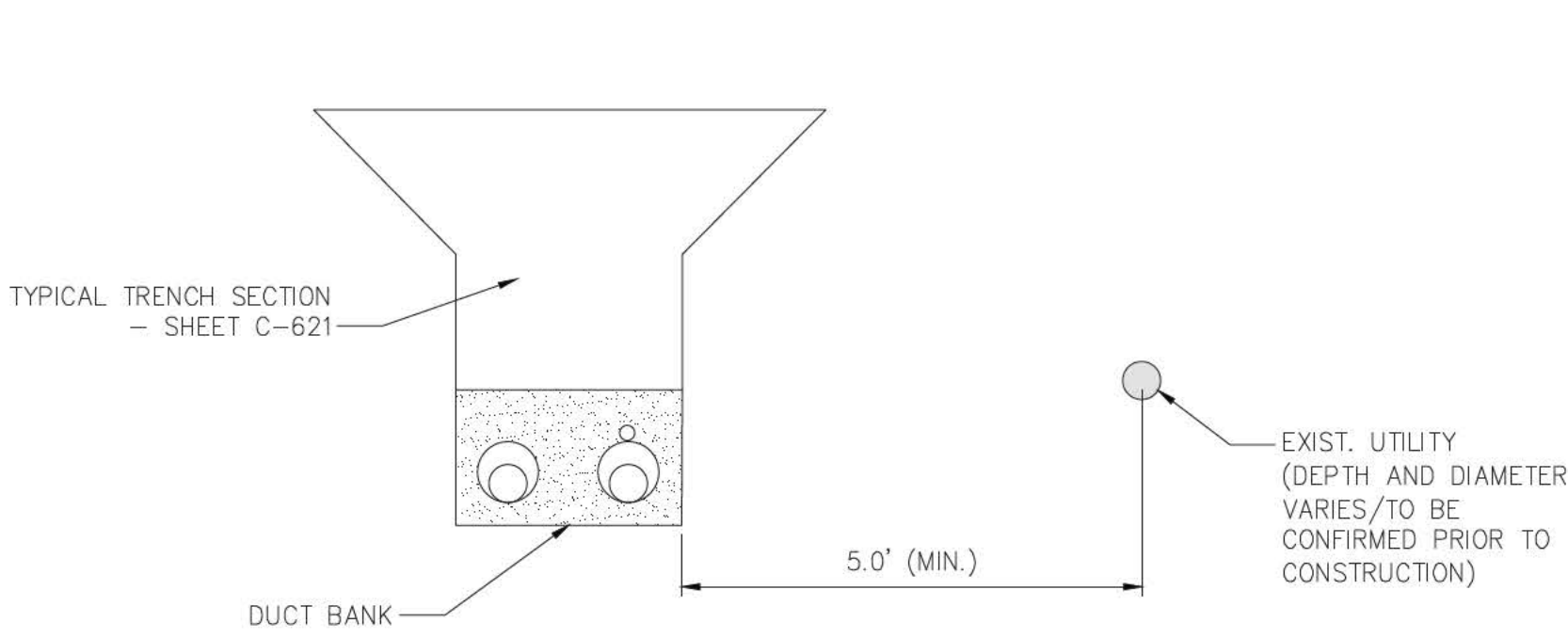
Support Sizes		Depth of Cut (ft)																	
		5	6	7	8	9	10	11	12	13	14	15	16	17	18	19	20		
Chest Width (in)	1.38	1-A	2-A	3-C	-D	5-E	5	5	5	5	5	5	6	6	6	6	6		
	1.65	1-A	2-A	3-C	-D	5-E	5	5	5	5	5	5	6	6	6	6	6		
	1.92	1-A	2-A	3-C	-D	5-E	5	5	5	5	5	5	6	6	6	6	6		
	2.50	1-A	3-B	3-C	-D	5-E	5	5	5	5	5	5	6	6	6	6	6		
	3.08	1-A	3-B	-D	5-G	5	5	5	5	5	5	5	6	6	6	6	6		
	3.67	1-A	3-B	-D	5-I	5	5	5	5	5	5	5	6	6	6	6	6		
	.60	1-A	3-B	-D	5-G	5	5	5	5	5	5	5	6	6	6	6	6		
	.90	2-A	3-C	-D	5-F	5	5	5	5	5	5	5	6	6	6	6	6		
	5.00	2-A	3-C	-D	5-F	5	5	5	5	5	5	5	6	6	6	6	6		

Type	Steel Beam Size
1	W36X231 Weak Axis Support
2	W36X27 Weak Axis Support
3	W36X330 Weak Axis Support
	W36X395 Weak Axis Support
4	21W36X135-Strong Axis Support
5	21W36X135-Strong Axis Support

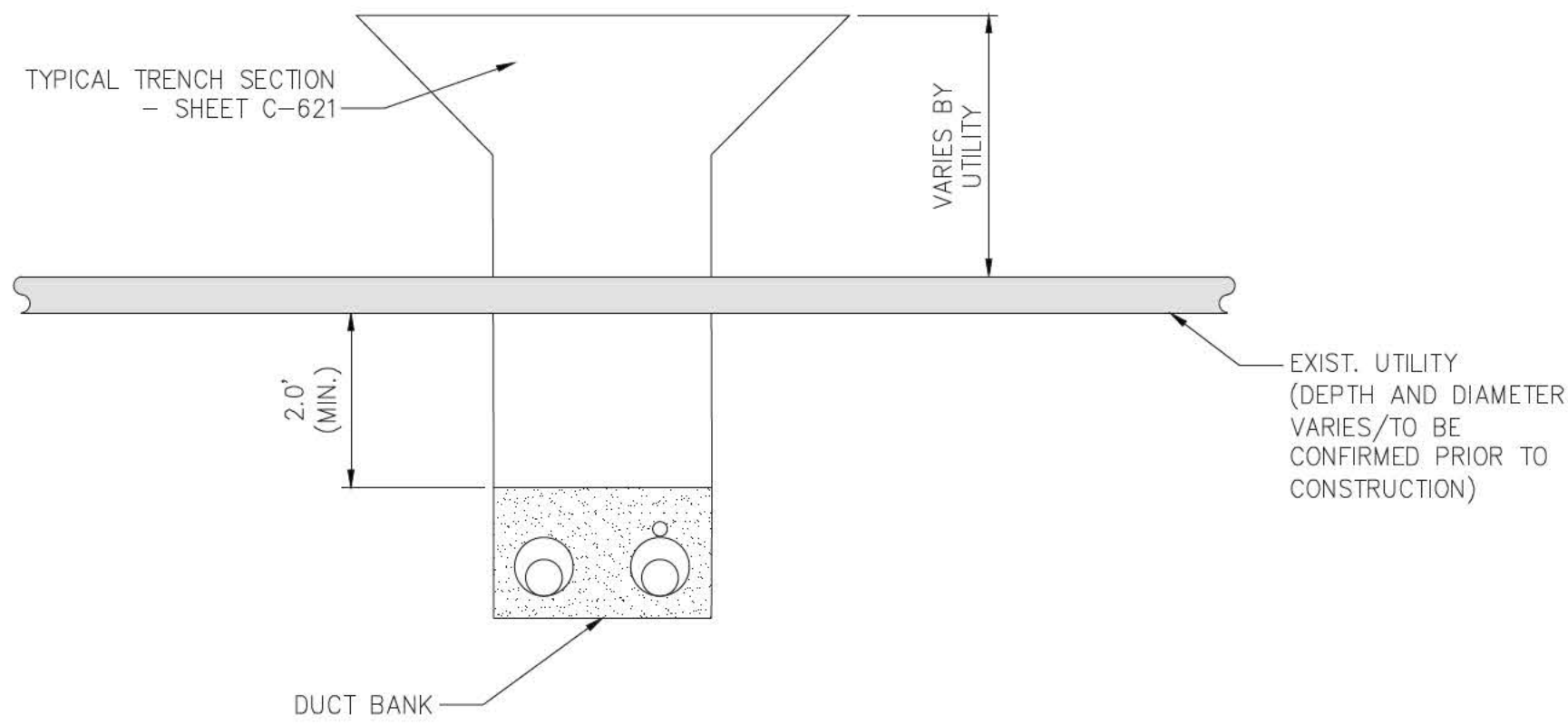
Type	Concrete Beam Width	Beam Depth
	in	in
A	52	15
B	52	20
C	52	2
D	52	30
E	52	36



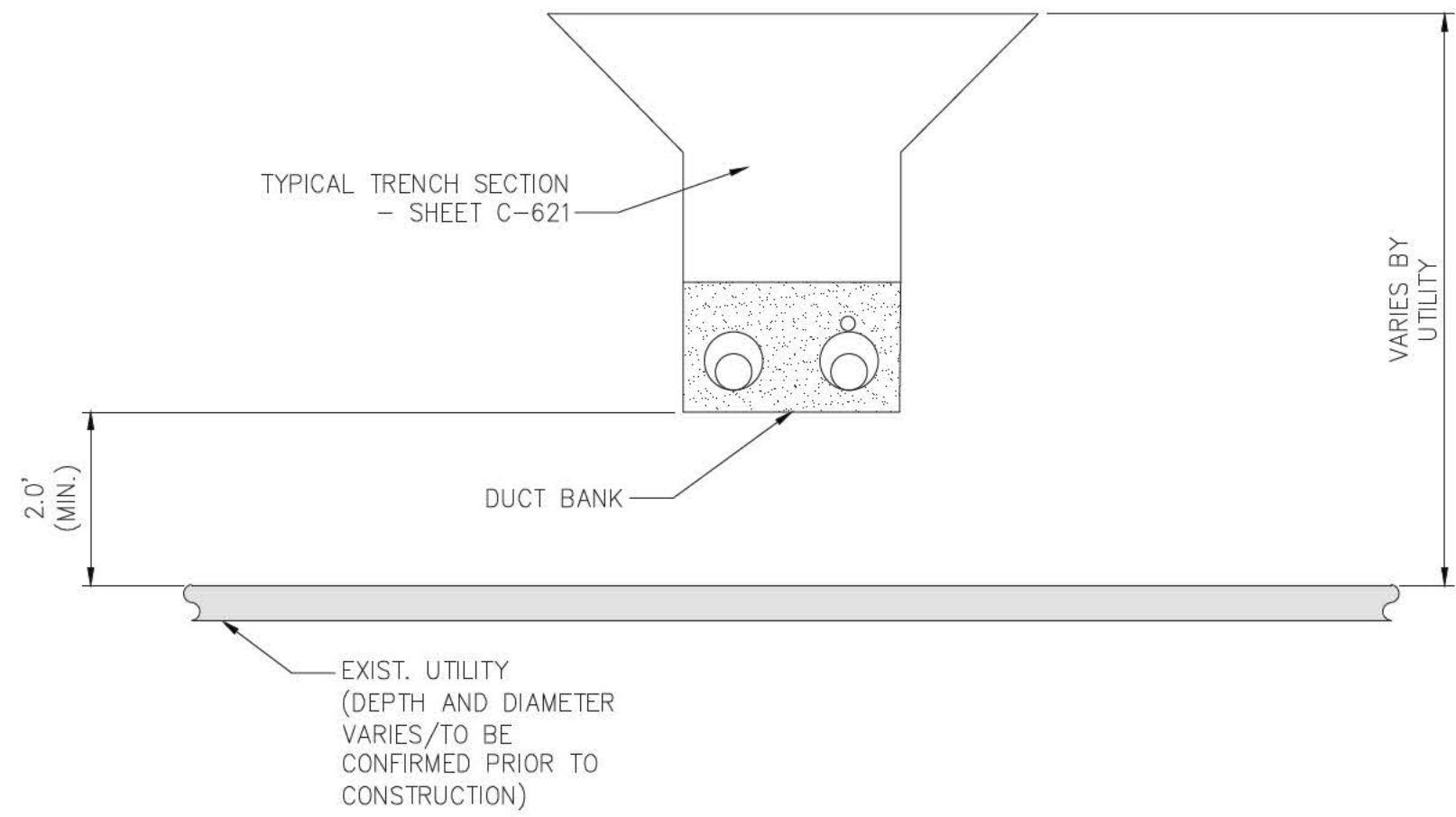
File: C:\PWORKING\REV\DWG\51141\21162\_7A\_C-901.DWG Saved: 11/21/2022 4:19:08 PM Plotted: 11/21/2022 4:19:26 PM Current User: Woger, Mike LastSavedBy: Mike Woger



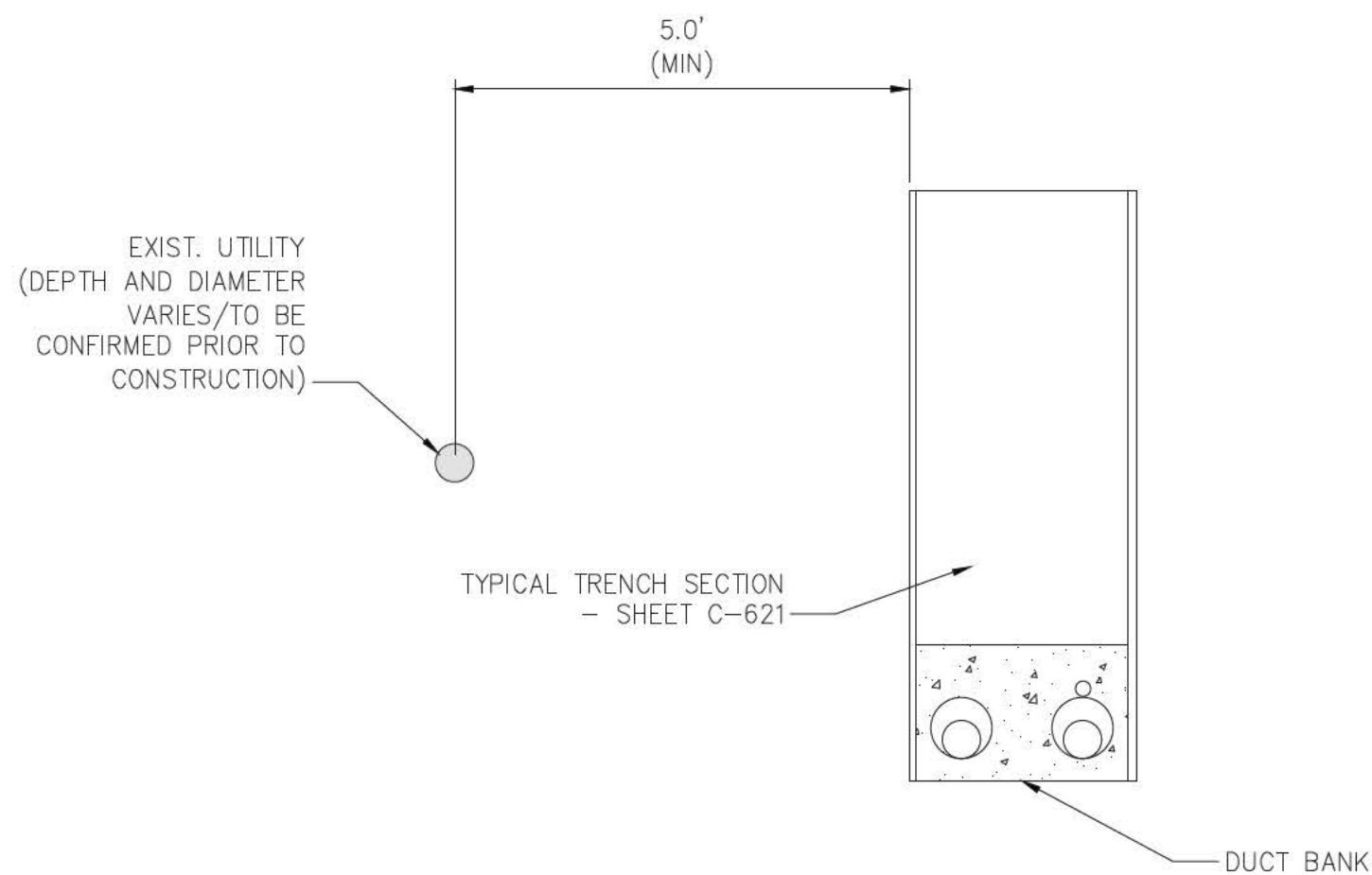
1 OPEN TRENCH - HORIZONTAL SEPARATION  
NOT TO SCALE



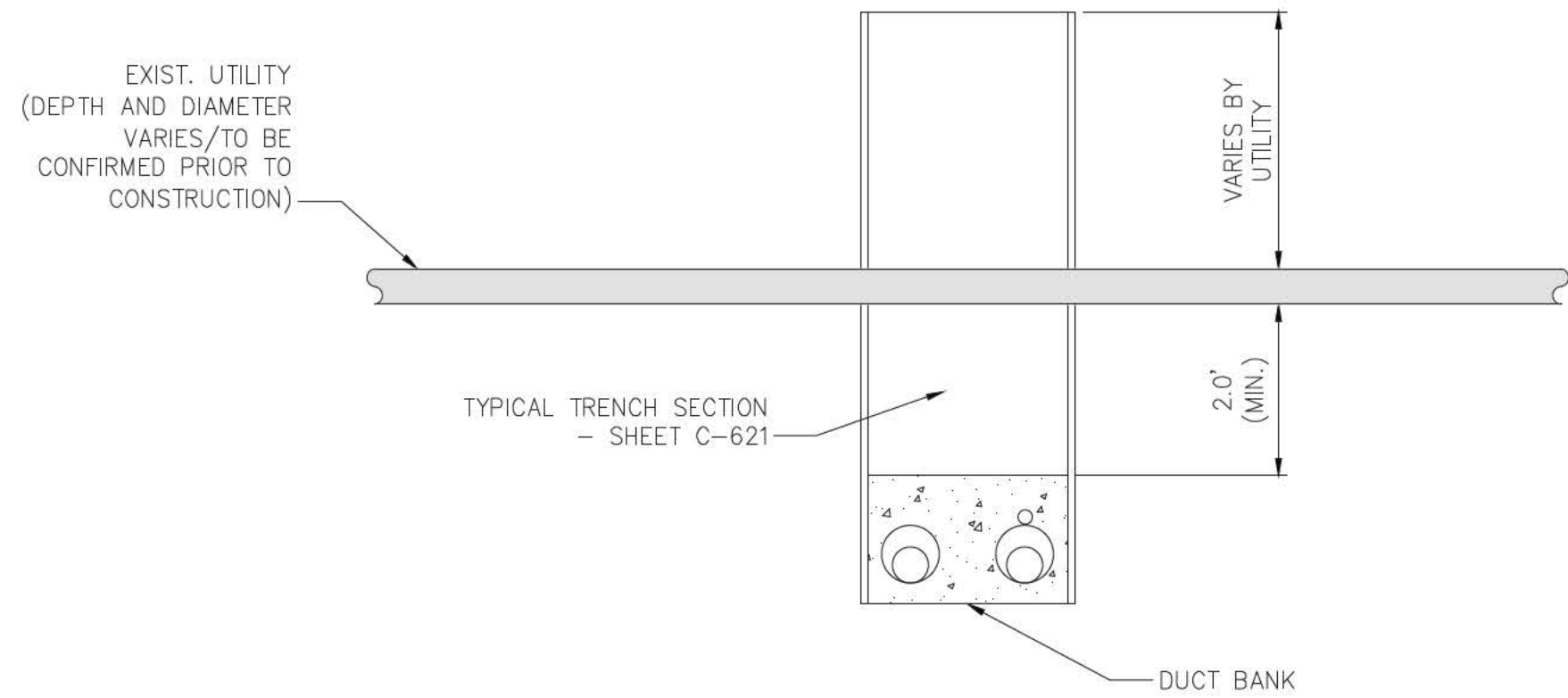
3 OPEN TRENCH - VERTICAL SEPARATION (UNDER)  
NOT TO SCALE



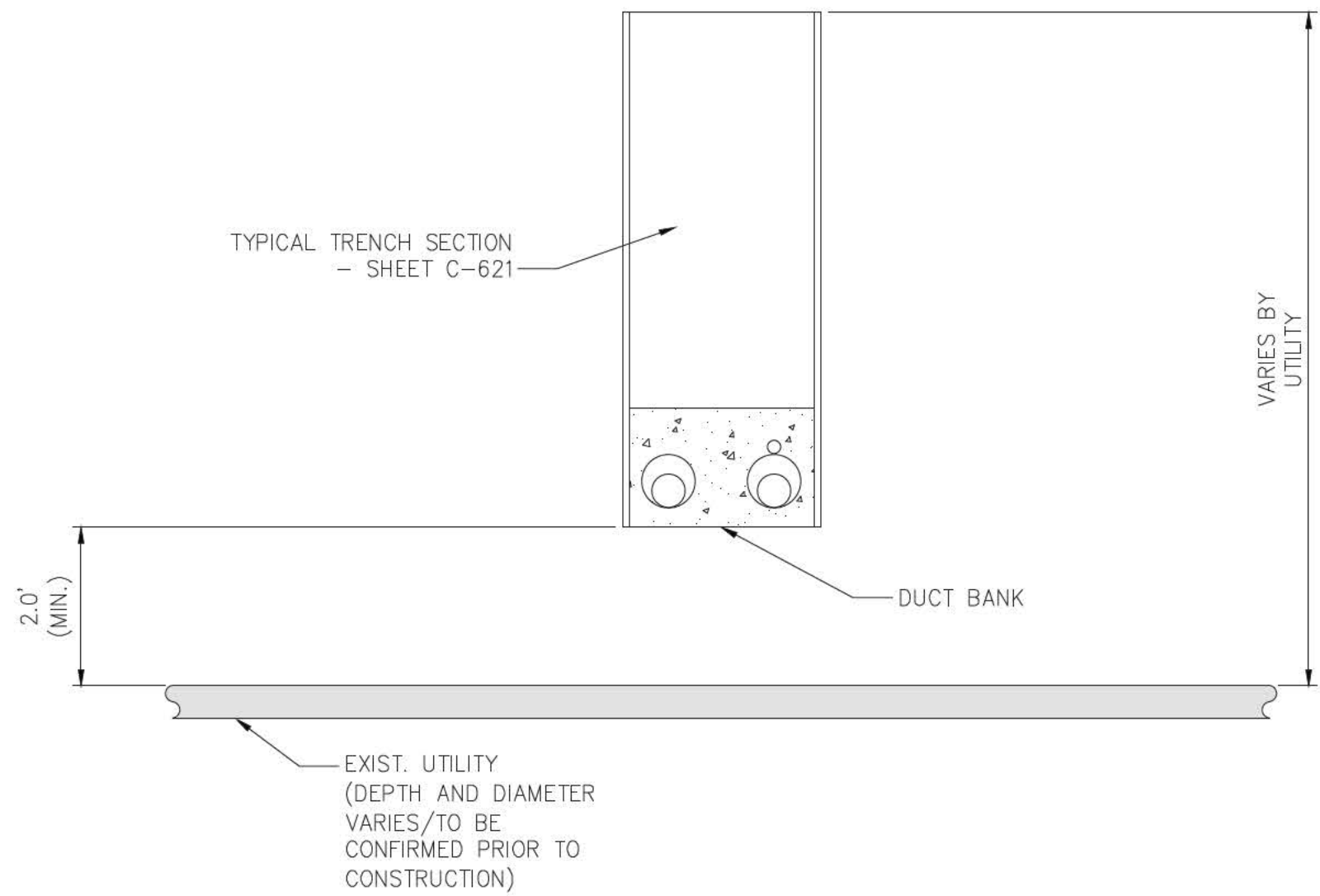
5 OPEN TRENCH - VERTICAL SEPARATION (OVER)  
NOT TO SCALE



2 TYPICAL DUCTBANK IN ROADWAY - HORIZONTAL SEPARATION  
NOT TO SCALE



4 TYPICAL DUCTBANK IN ROADWAY - VERTICAL SEPARATION (UNDER)  
NOT TO SCALE



6 TYPICAL DUCTBANK IN ROADWAY - VERTICAL SEPARATION (OVER)  
NOT TO SCALE



TETRA TECH ENGINEERING AND SURVEYING P.C.  
(A NEW YORK PROFESSIONAL CORPORATION)

CHPE ID/CRK Review		
Disipline	Rev	Comments
Civil/Plan / Profile, Access and Construction Staging		
ISO Trenchless		
MEP/FACT		
EMC/PEIC		
Structural		
Utilities		
Construction		

IT IS A VIOLATION OF LAW FOR ANY PERSON, UNLESS THEY ARE ACTING UNDER THE DIRECTION OF A LICENSED PROFESSIONAL ENGINEER, ARCHITECT, LANDSCAPE ARCHITECT OR LAND SURVEYOR TO ALTER AN ITEM IN ANY WAY. IF AN ITEM BEARING THE STAMP OF A LICENSED PROFESSIONAL IS ALTERED, THE ALTERING ENGINEER, ARCHITECT, LANDSCAPE ARCHITECT OR LAND SURVEYOR SHALL STAMP THE DOCUMENT AND INCLUDE THE NOTATION "ALTERED BY" FOLLOWED BY THEIR SIGNATURE, THE DATE OF SUCH ALTERATION, AND A SPECIFIC DESCRIPTION OF THE ALTERATION.

H	12/01/2022	DRAFT FINAL	RB	EK
G	11/16/2022	ISSUED FOR DRAFT FINAL	RB	EK
F	07/22/2022	ISSUED FOR FINAL REVIEW	RB	EK
E	06/09/2022	ISSUED FOR FINAL REVIEW	RB	EK
D	05/19/2022	ISSUED FOR INTERIM REVIEW	RB	RB
C	03/22/2022	PRELIMINARY DESIGN DEVELOPMENT	BV	TK
B	03/04/2022	PRELIMINARY DESIGN DEVELOPMENT IDR-CR	BV	TK
A	02/14/2022	PRELIMINARY PROGRESS	BV	TK
No.	DATE	SUBMITTAL / REVISION DESCRIPTION	DB	APP

CHAMPLAIN HUDSON POWER EXPRESS  
SEGMENT 11 (PACKAGE 7A) - CSX: CATSKILL  
UTILITY TYPICAL  
SEPARATION DETAILS

DRAWN BY:	ws0	DESIGNED BY:	ws0	APPROVED BY:		SCALE	AS NOTED	DATE	02/14/2022
						REV. NO.		SH. NO.	XXX OF 66

KIEWIT PROJECT NO.	21162
TT PROJECT NO.	204-3701
DRAWING NO.	C-901

**Package 7A (Segment 11) CI Crossing Agreement Status Details**

Utility Owner	Utility Type (Quantity)	Agreement Status/Date	Details	RUA Notes
CHG&E	<p>Overhead Electric Transmission (1)</p> <p>Underground Electric Transmission (13)</p> <p>Overhead Electric Distribution (40)</p> <p>Underground Gas Transmission (4)</p> <p>Underground Gas Distribution (9)</p>	CHPE to provide final custom format plans for CI Owner review and sign off.	<p>9/22/22 Sent CI Owner packages 6 and 7A, asked for feedback.</p> <p>10/14/22 Set up FTP site to share information with CI Owner.</p> <p>11/7/22 Held first in-person working meeting with CI Owner and CHPE teams, held at CI Owner's offices. Discussed CI owner concerns, separation distances, potential areas needing additional engineering, progress tracking.</p> <p>11/14/22 Began holding weekly call with CI Owner to work through areas needing additional engineering and address CI Owner concerns.</p> <p>2/9/23 Sent updated CI Owner packages for Packages 6 and 7A.</p> <p>2/9/23 Held second in-person working meeting with CI Owner and CHPE teams, held at CI Owner's offices. Discussed CI owner concerns, separation distances, potential areas needing additional engineering, progress tracking.</p> <p>2/17/23 Submitted Potential Effects of Underground DC Cables on Co-Located infrastructure (CHG&amp;E) to CI Owner for review and comment. CI Owner currently procuring outside support to complete the review.</p> <p>6/1/23 Held third in-person working meeting with CI Owner and CHPE teams, held at CI Owner's offices. Worked through Package 7A areas needing additional engineering.</p>	NA

**Package 7A (Segment 11) CI Crossing Agreement Status Details**

Utility Owner	Utility Type (Quantity)	Agreement Status/Date	Details	RUA Notes
			Continuing to engage with CI Owner once per week and more frequently, as needed.	
MCI/Verizon Business	Underground Fiber (3)	CI Owner unresponsive until 4/11/23. CHPE to provide final custom format plans for CI Owner review and sign off.	<p>9/22/22 Sent CI Owner package, asked for feedback.</p> <p>11/2/22 Sent updated CI Owner package, asked for feedback.</p> <p>2/10/23 Re-sent link to CI Owner package, asked for feedback.</p> <p>3/28/23 Re-sent link to CI Owner package, asked for feedback.</p> <p>4/11/23 Spoke with CI owner, learned previous contact no longer is an employee. Provided project schedule, requested/received as-built drawings.</p> <p>IFC CI Owner final custom format package to be provided.</p>	NA
Mid Hudson Cable Vision	Overhead Telephone (1)	CI Owner unresponsive. CHPE to provide final custom format plans to CI Owner.	<p>9/22/22 Sent CI Owner package, asked for feedback.</p> <p>10/10/22 Re-sent link to CI Owner package, asked for feedback.</p> <p>3/29/23 Re-sent link to CI Owner package, asked for feedback.</p> <p>4/13/23 Sent link to updated CI Owner package, asked for feedback.</p> <p>IFC CI Owner final custom format package to be provided.</p>	NA
Timer Warner	Overhead Fiber (2)	CI Owner unresponsive. CHPE to provide final custom format plans to CI Owner.	<p>9/22/22 Sent CI Owner package, asked for feedback.</p> <p>9/23/22 Received comments from CI Owner on drawings.</p>	NA

**Package 7A (Segment 11) CI Crossing Agreement Status Details**

Utility Owner	Utility Type (Quantity)	Agreement Status/Date	Details	RUA Notes
			<p>Provided comments to EOR to incorporate into design.</p> <p>4/13/23 Sent link to updated CI Owner package, asked for feedback.</p> <p>IFC CI Owner final custom format package to be provided.</p>	
Verizon	<p>Underground Fiber (1)</p> <p>Overhead Telephone (2)</p>	CHPE to provide final custom format plans for CI Owner review and sign off.	<p>9/22/22 Sent CI Owner package, asked for feedback.</p> <p>11/2/22 Re-sent CI Owner package, asked for feedback.</p> <p>3/29/23 Re-sent link to CI Owner package, asked for feedback.</p> <p>4/13/23 Sent link to updated CI Owner package, asked for feedback.</p> <p>IFC CI Owner final custom format package to be provided.</p>	NA
Town of Catskill	<p>Sanitary Sewer (6)</p> <p>Storm Drainage Pipe/Culvert (6)</p> <p>Water Line (9)</p>	CHPE to provide final custom format plans for CI Owner review and sign off.	<p>9/22/22 Sent CI Owner package, asked for feedback.</p> <p>4/13/23 Sent link to updated CI Owner package, asked for feedback.</p> <p>4/19/23 Meeting held with Town and Village of Catskill to provide project update. Draft RUA provided to Town.</p> <p>IFC CI Owner final custom format package to be provided.</p>	Road Use and Crossing Agreement under review.

## Cole, Benjamin

---

**From:** Cole, Benjamin  
**Sent:** Friday, September 23, 2022 5:26 PM  
**To:** Borchert, John  
**Cc:** Dimisko, Brian  
**Subject:** RE: CHPE Collocated Infrastructure Details\_EM&CP 6 and 7A CHG&E

Great. Thank you John.

Brian please don't hesitate to reach out with comments.

Thanks,

Ben Cole

[ben.cole@wsp.com](mailto:ben.cole@wsp.com)

---

**From:** Borchert, John <JBorchert@cenhud.com>  
**Sent:** Friday, September 23, 2022 5:18 PM  
**To:** Cole, Benjamin <Ben.Cole@wsp.com>  
**Cc:** Dimisko, Brian <BDimisko@cenhud.com>  
**Subject:** Re: CHPE Collocated Infrastructure Details\_EM&CP 6 and 7A CHG&E

Ben,

I forwarded your email to Brian Dimisko to share to our team and begin the review process.

John Borchert

Sent from my iPhone

On Sep 22, 2022, at 10:07 PM, Cole, Benjamin <[Ben.Cole@wsp.com](mailto:Ben.Cole@wsp.com)> wrote:

**CAUTION!!! This Message Is From an External Sender.**

STOP and verify sender email address, LOOK closely at the content, DON'T click on any unknown attachments or links and REPORT anything suspicious.

**\*\*\* WARNING - EXTERNAL EMAIL \*\*\* USE CAUTION BEFORE  
OPENING LINKS/ATTACHMENTS \*\*\* NEVER SUPPLY  
USERID/PASSWORD INFORMATION \*\*\***

Good Evening John,

## Cole, Benjamin

---

**From:** Cole, Benjamin  
**Sent:** Wednesday, February 8, 2023 10:17 AM  
**To:** 'Dimisko, Brian'  
**Cc:** Rick Chase  
**Subject:** RE: CHPE Package 7A Plan/Profile/Utility Matrix

Hi Brian,

Plans/Profiles for both Package 6 and 7A are now in the following folder and ready for download: [Packages 6 and 7A Plan and Profile](#)

Thanks,

Ben Cole  
[REDACTED]

[ben.cole@wsp.com](mailto:ben.cole@wsp.com)

---

**From:** Cole, Benjamin  
**Sent:** Thursday, February 2, 2023 10:43 AM  
**To:** Dimisko, Brian <BDimisko@cenhud.com>  
**Cc:** Rick Chase <rick.chase@transmissiondevelopers.com>  
**Subject:** CHPE Package 7A Plan/Profile/Utility Matrix

Good Morning Brian,

At the link please find the updated draft final plan/profile/utility matrix for Package 7A: [Package 7A Plan and Profile](#)

Kiewit had the following comment about the level of design: Package 6 and 7A sets will both be complete deliverables for the “Draft Final” design milestone on the CHPE Project. Although the term “Draft” is included, the intent of this stage prior to “Final” is to prepare the permitting documents for submittal to DPS. Because of this, we believe the drawing sets should be considered ‘final design’ as it relates to the interaction of the conduit alignment with CHG&E electric and gas assets.

We’ll transmit Package 6 as soon as available.

Thanks,

Ben Cole  
[REDACTED]

[ben.cole@wsp.com](mailto:ben.cole@wsp.com)

## Cole, Benjamin

---

**From:** Cole, Benjamin  
**Sent:** Friday, February 17, 2023 3:09 PM  
**To:** Dimisko, Brian  
**Cc:** Rick Chase  
**Subject:** Electrical Effects Study

Hi Brian,

The potential electrical effects study is ready for CHGE review. Please find a copy at the following link: [Electrical Studies](#)

The utility interaction tracker is almost ready for uploading.

Thanks and Happy Friday!

Ben Cole

[ben.cole@wsp.com](mailto:ben.cole@wsp.com)



## Cole, Benjamin

---

**From:** Cole, Benjamin  
**Sent:** Friday, September 23, 2022 5:26 PM  
**To:** Borchert, John  
**Cc:** Dimisko, Brian  
**Subject:** RE: CHPE Collocated Infrastructure Details\_EM&CP 6 and 7A CHG&E

Great. Thank you John.

Brian please don't hesitate to reach out with comments.

Thanks,

Ben Cole

[ben.cole@wsp.com](mailto:ben.cole@wsp.com)

---

**From:** Borchert, John <JBorchert@cenhud.com>  
**Sent:** Friday, September 23, 2022 5:18 PM  
**To:** Cole, Benjamin <Ben.Cole@wsp.com>  
**Cc:** Dimisko, Brian <BDimisko@cenhud.com>  
**Subject:** Re: CHPE Collocated Infrastructure Details\_EM&CP 6 and 7A CHG&E

Ben,

I forwarded your email to Brian Dimisko to share to our team and begin the review process.

John Borchert

Sent from my iPhone

On Sep 22, 2022, at 10:07 PM, Cole, Benjamin <[Ben.Cole@wsp.com](mailto:Ben.Cole@wsp.com)> wrote:

**CAUTION!!! This Message Is From an External Sender.**

STOP and verify sender email address, LOOK closely at the content, DON'T click on any unknown attachments or links and REPORT anything suspicious.

**\*\*\* WARNING - EXTERNAL EMAIL \*\*\* USE CAUTION BEFORE  
OPENING LINKS/ATTACHMENTS \*\*\* NEVER SUPPLY  
USERID/PASSWORD INFORMATION \*\*\***

Good Evening John,



## Cole, Benjamin

---

**From:** Cole, Benjamin  
**Sent:** Wednesday, February 8, 2023 10:17 AM  
**To:** 'Dimisko, Brian'  
**Cc:** Rick Chase  
**Subject:** RE: CHPE Package 7A Plan/Profile/Utility Matrix

Hi Brian,

Plans/Profiles for both Package 6 and 7A are now in the following folder and ready for download: [Packages 6 and 7A Plan and Profile](#)

Thanks,

Ben Cole

[ben.cole@wsp.com](mailto:ben.cole@wsp.com)

---

**From:** Cole, Benjamin  
**Sent:** Thursday, February 2, 2023 10:43 AM  
**To:** Dimisko, Brian <BDimisko@cenhud.com>  
**Cc:** Rick Chase <rick.chase@transmissiondevelopers.com>  
**Subject:** CHPE Package 7A Plan/Profile/Utility Matrix

Good Morning Brian,

At the link please find the updated draft final plan/profile/utility matrix for Package 7A: [Package 7A Plan and Profile](#)

Kiewit had the following comment about the level of design: Package 6 and 7A sets will both be complete deliverables for the “Draft Final” design milestone on the CHPE Project. Although the term “Draft” is included, the intent of this stage prior to “Final” is to prepare the permitting documents for submittal to DPS. Because of this, we believe the drawing sets should be considered ‘final design’ as it relates to the interaction of the conduit alignment with CHG&E electric and gas assets.

We’ll transmit Package 6 as soon as available.

Thanks,

Ben Cole

[ben.cole@wsp.com](mailto:ben.cole@wsp.com)

## Cole, Benjamin

---

**From:** Cole, Benjamin  
**Sent:** Thursday, September 22, 2022 10:00 PM  
**To:** mike.fitzgerald@verizon.com  
**Subject:** CHPE Collocated Infrastructure Details\_EM&CP 6, and 7A MCI and Verizon

Good Evening,

I'm writing on behalf of Transmission Developers Inc. ("TDI"), owner of the Champlain Hudson Power Express ("CHPE" or "Project") transmission line project. The purpose of this correspondence is to provide more detailed information related to how the CHPE project is designed to interact with your infrastructure and to solicit feedback from your company regarding the Project's alignment.

As you may recall from previous communications from Rick Chase at TDI, the CHPE is a fully permitted 339-mile underground and underwater high voltage direct current (HVDC) electric transmission line that will import up to 1,250 MW of renewable power from Canada and send it to the New York City metro area (see <https://chpexpress.com> for additional information).

At the link below please find design drawings of the proposed CHPE alignment where it involves your infrastructure within the Segment 6 Environmental Management and Construction Plan ("EM&CP") Packages 6, and 7A.

Link: [Package 6 MCI Co-Located Infrastructure 2022-09-15.pdf](#)

Link: [Package 7A MCI & Verizon Co-Located Infrastructure 2022-09-15.pdf](#)

TDI will be submitting these plans to the New York State Public Service Commission ("PSC") for portions of the Project in the Towns of Bethlehem, Coeymans, New Baltimore, Cocksackie, Athens, and Catskill. This information is a follow-up to previous communications to you providing general project information and typical infrastructure crossing drawings.

Please review the linked information regarding the CHPE alignment relating to your infrastructure and provide concurrence with the Project's cable separation and alignment and any feedback to me ([ben.cole@wsp.com](mailto:ben.cole@wsp.com)) by October 7, 2022. It is important to TDI that the construction and operation of the CHPE project does not interfere with the continued operation of your infrastructure.

To the extent that the CHPE alignment interacts with your infrastructure within future Segment EM&CP submissions, we will provide you with similar drawings in advance of those filings. I look forward to coordinating with you as we finalize the design of the CHPE project.

Sincerely,

Ben Cole  
WSP USA, on behalf of TDI

  
[ben.cole@wsp.com](mailto:ben.cole@wsp.com)

## Cole, Benjamin

---

**From:** Cole, Benjamin  
**Sent:** Tuesday, March 28, 2023 11:20 AM  
**To:** Stephen.Parretti@verizon.com.  
**Cc:** Fitzgerald, Michael  
**Subject:** FW: CHPE Collocated Infrastructure Details\_EM&CP 4B, 6, and 7A MCI Verizon Business

Good Morning,

Please see information and links below to download plans/profiles of the CHPE alignment, where it interacts with Verizon Business/formerly MCI infrastructure in three areas of the Project. Please review the linked information and provide any comments that you may have with regard to how the CHPE project interacts with your infrastructure.

Thank you,

Ben Cole

[ben.cole@wsp.com](mailto:ben.cole@wsp.com)

---

**From:** Cole, Benjamin  
**Sent:** Friday, February 10, 2023 12:02 PM  
**To:** Fitzgerald, Michael <mike.fitzgerald@verizon.com>  
**Subject:** RE: CHPE Collocated Infrastructure Details\_EM&CP 4B, 6, and 7A MCI Verizon Business

Hi Mr. Fitzgerald,

Please find new links to download the information previously provided and let me know if you have comments or would like to have a call with the CHPE team. We are trying to gather all comments on Package 4B currently.

[Verizon Bus MCI Pckg 4B](#)

[Verizon Bus MCI Pckg 6](#)

[Verizon Bus MCI Pckg 7A](#)

Thank You,

Ben Cole

[ben.cole@wsp.com](mailto:ben.cole@wsp.com)

---

**From:** Cole, Benjamin  
**Sent:** Wednesday, November 2, 2022 4:07 PM  
**To:** Fitzgerald, Michael <[mike.fitzgerald@verizon.com](mailto:mike.fitzgerald@verizon.com)>  
**Subject:** CHPE Collocated Infrastructure Details\_EM&CP 4B, 6, and 7A MCI Verizon Business

Good Afternoon Mr. Fitzgerald,

I'm writing on behalf of Transmission Developers Inc. ("TDI"), owner of the Champlain Hudson Power Express ("CHPE" or "Project") transmission line project. The purpose of this correspondence is to provide more detailed information related to how the CHPE project is designed to interact with your infrastructure and to solicit feedback from your company regarding the Project's alignment.

The CHPE is a fully permitted 339-mile underground and underwater high voltage direct current (HVDC) electric transmission line that will import up to 1,250 MW of renewable power from Canada and send it to the New York City metro area (see <https://chpexpress.com> for additional information).

At the links below please find design drawings of the proposed CHPE alignment where it involves your infrastructure within the Segment 6 Environmental Management and Construction Plan ("EM&CP") Packages 4B, 6, and 7A.

Links:

[Package 4B MCI Co-Located Infrastructure Package 2022-10-31.pdf](#)

[Package 6 MCI Co-Located Infrastructure 2022-09-15.pdf](#)

[Package 7A MCI Co-Located Infrastructure Package 2022-10-31.pdf](#)

TDI will be submitting these plans to the New York State Public Service Commission ("PSC") for portions of the Project in your area. This information is a follow-up to previous communications to you providing general project information and typical infrastructure crossing drawings.

Please review the linked information regarding the CHPE alignment relating to your infrastructure and provide concurrence with the Project's cable separation and alignment and any feedback to me ([ben.cole@wsp.com](mailto:ben.cole@wsp.com)) by November 16, 2022. It is important to TDI that the construction and operation of the CHPE project does not interfere with the continued operation of your infrastructure.

To the extent that the CHPE alignment interacts with your infrastructure within future Segment EM&CP submissions, we will provide you with similar drawings in advance of those filings. I look forward to coordinating with you as we finalize the design of the CHPE project.

Sincerely,



**Ben Cole, PG**

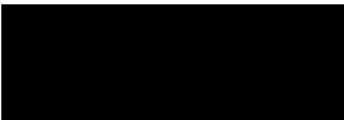
Lead Consultant

Professional Geologist\*

\*AR, DE, GA, IL, KY, NC, NY, PA



[ben.cole@wsp.com](mailto:ben.cole@wsp.com)



[wsp.com](http://wsp.com)

## Cole, Benjamin

---

**From:** Cole, Benjamin  
**Sent:** Monday, April 10, 2023 3:32 PM  
**To:** sean.murphy@verizon.com; steven.paretti@verizon.com; mike.yancey@verizon.com  
**Cc:** Hill, Nathaniel RT (Nate); Scaia-Harbinger, Elaine M  
**Subject:** FW: CHPE Collocated Infrastructure Details\_EM&CP 4B, 6, and 7A MCI Verizon Business  
**Attachments:** FW E Champlain Hudson Power Express and VzB Infrastructure\_2 (1).msg  
  
**Importance:** High

Good Afternoon Sean, All,

I'm reaching out to see if Verizon Business has feedback/comments on the updated plan/profile drawings provided at the following link:

[CHPE-SUB-0093.03-00-MCI - CI Owner Package - 4B - 03-13-2023.pdf](#)

The CHPE design is moving toward completion and we are very much interested in feedback and comments regarding how the CHPE transmission lines are proposed to interact with your assets.

Please review the information at the link and provide any comments that you may have at your earliest convenience.

Please see information at the bottom of this thread for background.

Thank You,

Ben Cole

[ben.cole@wsp.com](mailto:ben.cole@wsp.com)

---

**From:** Cole, Benjamin  
**Sent:** Monday, April 10, 2023 3:16 PM  
**To:** Fitzgerald, Michael <mike.fitzgerald@verizon.com>  
**Cc:** m.yancey1@verizon.com; Stephen.Parretti@verizon.com; Hill, Nathaniel RT (Nate) <nathaniel.hill@verizon.com>; Grassi, Laura <Laura.Grassi@wsp.com>  
**Subject:** RE: CHPE Collocated Infrastructure Details\_EM&CP 4B, 6, and 7A MCI Verizon Business

Hi Mr. Fitzgerald,

At the following link please find the current CHPE plan/profile where the Project interacts with Verizon Business/MCI assets.

[CHPE-SUB-0093.03-00-MCI - CI Owner Package - 4B - 03-13-2023.pdf](#)

I have not seen feedback from Verizon Business, other than an exchange between you and Rick Chase in early 2022 (Rick has retired).

Please provide any feedback or comments that you may have with respect to the interactions depicted in the drawings as the Project moves toward design completion.

Please let me know if you have feedback on the plan/profile set available at the link.

Thank You,

Ben Cole

[ben.cole@wsp.com](mailto:ben.cole@wsp.com)

---

**From:** Cole, Benjamin

**Sent:** Friday, February 10, 2023 12:02 PM

**To:** Fitzgerald, Michael <[mike.fitzgerald@verizon.com](mailto:mike.fitzgerald@verizon.com)>

**Subject:** RE: CHPE Collocated Infrastructure Details\_EM&CP 4B, 6, and 7A MCI Verizon Business

Hi Mr. Fitzgerald,

Please find new links to download the information previously provided and let me know if you have comments or would like to have a call with the CHPE team. We are trying to gather all comments on Package 4B currently.

[Verizon Bus MCI Pckg 4B](#)

[Verizon Bus MCI Pckg 6](#)

[Verizon Bus MCI Pckg 7A](#)

Thank You,

Ben Cole

[ben.cole@wsp.com](mailto:ben.cole@wsp.com)

---

**From:** Cole, Benjamin

**Sent:** Wednesday, November 2, 2022 4:07 PM

**To:** Fitzgerald, Michael <[mike.fitzgerald@verizon.com](mailto:mike.fitzgerald@verizon.com)>

**Subject:** CHPE Collocated Infrastructure Details\_EM&CP 4B, 6, and 7A MCI Verizon Business

Good Afternoon Mr. Fitzgerald,

I'm writing on behalf of Transmission Developers Inc. ("TDI"), owner of the Champlain Hudson Power Express ("CHPE" or "Project") transmission line project. The purpose of this correspondence is to provide more detailed information related to how the CHPE project is designed to interact with your infrastructure and to solicit feedback from your company regarding the Project's alignment.

The CHPE is a fully permitted 339-mile underground and underwater high voltage direct current (HVDC) electric transmission line that will import up to 1,250 MW of renewable power from Canada and send it to the New York City metro area (see <https://chpexpress.com> for additional information).

At the links below please find design drawings of the proposed CHPE alignment where it involves your infrastructure within the Segment 6 Environmental Management and Construction Plan ("EM&CP") Packages 4B, 6, and 7A.

Links:

[Package 4B MCI Co-Located Infrastructure Package 2022-10-31.pdf](#)

[Package 6 MCI Co-Located Infrastructure 2022-09-15.pdf](#)

[Package 7A MCI Co-Located Infrastructure Package 2022-10-31.pdf](#)

TDI will be submitting these plans to the New York State Public Service Commission (“PSC”) for portions of the Project in your area. This information is a follow-up to previous communications to you providing general project information and typical infrastructure crossing drawings.

Please review the linked information regarding the CHPE alignment relating to your infrastructure and provide concurrence with the Project’s cable separation and alignment and any feedback to me ([ben.cole@wsp.com](mailto:ben.cole@wsp.com)) by November 16, 2022. It is important to TDI that the construction and operation of the CHPE project does not interfere with the continued operation of your infrastructure.

To the extent that the CHPE alignment interacts with your infrastructure within future Segment EM&CP submissions, we will provide you with similar drawings in advance of those filings. I look forward to coordinating with you as we finalize the design of the CHPE project.

Sincerely,



**Ben Cole, PG**

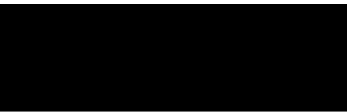
Lead Consultant

Professional Geologist\*

\*AR, DE, GA, IL, KY, NC, NY, PA



[ben.cole@wsp.com](mailto:ben.cole@wsp.com)



[wsp.com](http://wsp.com)

## Cole, Benjamin

---

**From:** Parretti, Stephan R <stephen.parretti@verizon.com>  
**Sent:** Wednesday, April 12, 2023 10:06 AM  
**To:** Cole, Benjamin  
**Subject:** Re: [E] RE: CHPE Collocated Infrastructure Details\_EM&CP 4B, 6, and 7A MCI Verizon Business  
**Attachments:** 005752-01 Vol 2 (1).pdf

Ben ,

The attached should cover the Cocksackie to Kingston area

On Tue, Apr 11, 2023 at 4:08 PM Cole, Benjamin <[Ben.Cole@wsp.com](mailto:Ben.Cole@wsp.com)> wrote:

Hi again Steve,

Please see the most recent plan/profile for package 7A at the link.

[CHPE-SUB-0114.04-00-MCI - CI Owner Package - 7A - 03-21-2023.pdf](#)

Updated Package 6 is not yet available but expected to be soon. I'll forward that when it is.

Thanks,

Ben Cole



[ben.cole@wsp.com](mailto:ben.cole@wsp.com)

---

**From:** Cole, Benjamin  
**Sent:** Tuesday, April 11, 2023 4:01 PM  
**To:** 'Parretti, Stephan R' <[stephen.parretti@verizon.com](mailto:stephen.parretti@verizon.com)>  
**Subject:** RE: [E] RE: CHPE Collocated Infrastructure Details\_EM&CP 4B, 6, and 7A MCI Verizon Business

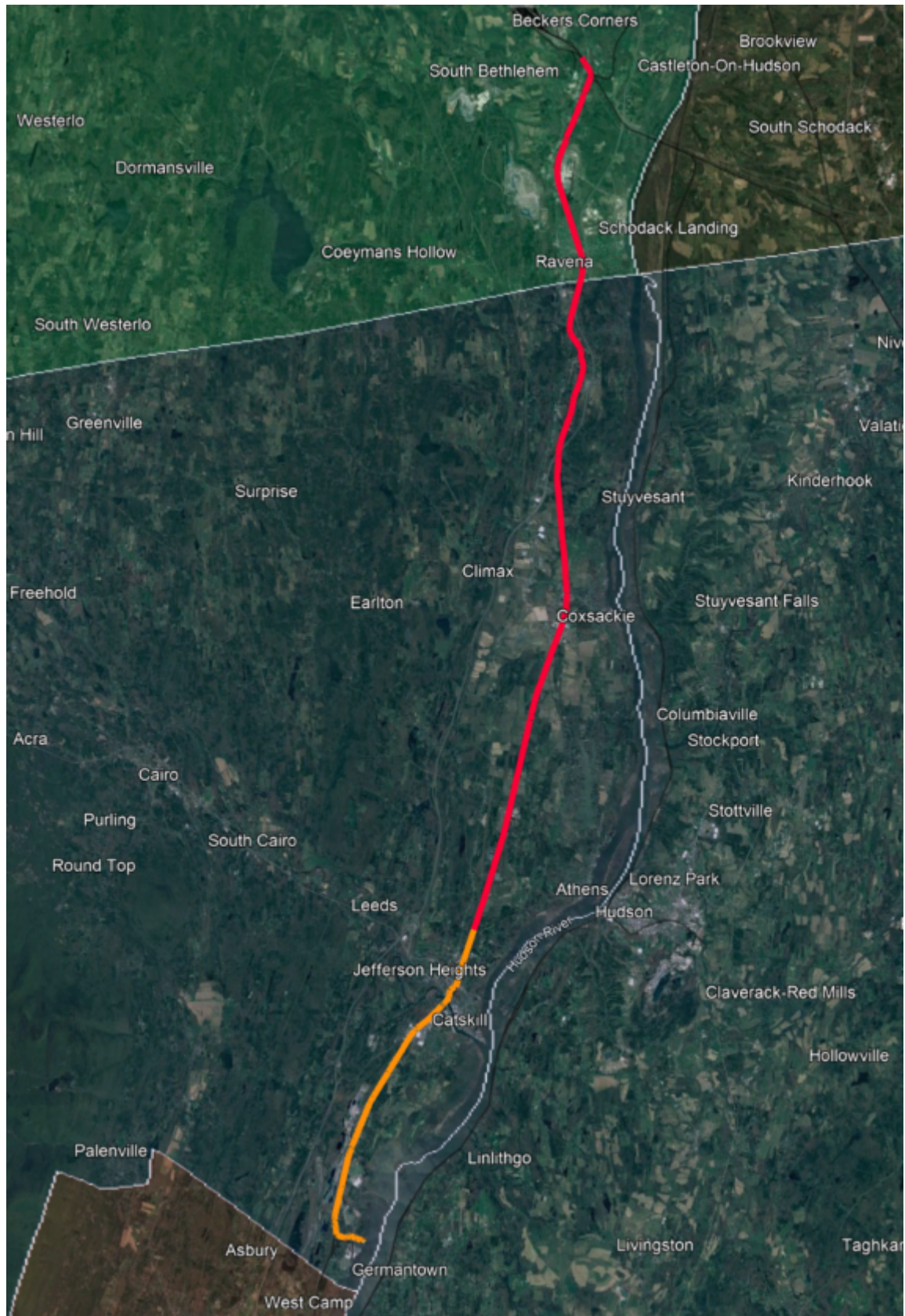


Hi Steve,

I just heard back from the design team with a followup question.

Looks like what you provided (thank you again) covers facilities generally located from Glenville (CHPE Package 4A) through Rotterdam (north end of CHPE Package 5A).

Are there drawings/information available for facilities in CHPE Packages 6 and 7A (south end of Albany County through South end of Greene County; please see below: red = Package 6, Orange = Package 7A)?



Thanks,

Ben Cole

[REDACTED]

[ben.cole@wsp.com](mailto:ben.cole@wsp.com)

---

**From:** Cole, Benjamin  
**Sent:** Tuesday, April 11, 2023 12:54 PM  
**To:** Parretti, Stephan R <[stephen.parretti@verizon.com](mailto:stephen.parretti@verizon.com)>  
**Subject:** RE: [E] RE: CHPE Collocated Infrastructure Details\_EM&CP 4B, 6, and 7A MCI Verizon Business

Great. Thanks again Steve. Will do.

Ben Cole

[REDACTED]

[ben.cole@wsp.com](mailto:ben.cole@wsp.com)

---

**From:** Parretti, Stephan R <[stephen.parretti@verizon.com](mailto:stephen.parretti@verizon.com)>  
**Sent:** Tuesday, April 11, 2023 12:27 PM  
**To:** Cole, Benjamin <[Ben.Cole@wsp.com](mailto:Ben.Cole@wsp.com)>  
**Subject:** Re: [E] RE: CHPE Collocated Infrastructure Details\_EM&CP 4B, 6, and 7A MCI Verizon Business

Ben,

Please see attached asbuilts. Let me know if you have any questions.

On Tue, Apr 11, 2023 at 11:08 AM Cole, Benjamin <[Ben.Cole@wsp.com](mailto:Ben.Cole@wsp.com)> wrote:

Hi Steve,

Glad to speak with you! Noting for my benefit when search in the future, number is [REDACTED]

As discussed, please find attached draft schedule. Verizon Business appears to be located in CHPE design packages 4B, 6 and 7A.

Looking forward to any as-built drawings you can provide.

Thank you,

Ben Cole

[REDACTED]  
[ben.cole@wsp.com](mailto:ben.cole@wsp.com)

---

**From:** Cole, Benjamin  
**Sent:** Tuesday, April 11, 2023 8:58 AM  
**To:** Parretti, Stephan R <[stephen.parretti@verizon.com](mailto:stephen.parretti@verizon.com)>  
**Cc:** Fitzgerald, Michael <[mike.fitzgerald@verizon.com](mailto:mike.fitzgerald@verizon.com)>; [m.yancey1@verizon.com](mailto:m.yancey1@verizon.com); Hill, Nathaniel RT (Nate) <[nathaniel.hill@verizon.com](mailto:nathaniel.hill@verizon.com)>; Grassi, Laura <[Laura.Grassi@wsp.com](mailto:Laura.Grassi@wsp.com)>  
**Subject:** RE: [E] RE: CHPE Collocated Infrastructure Details\_EM&CP 4B, 6, and 7A MCI Verizon Business

Hi Steve,

I just tried calling a couple times but am getting a message 'the number you dialed is not in service.' I've triple checked and am dialing [REDACTED]. Is there another number available? Please give me a call if not because I am not able to get through. My number is [REDACTED].

Thank you!

Ben

---

**From:** Cole, Benjamin  
**Sent:** Tuesday, April 11, 2023 8:53 AM  
**To:** Parretti, Stephan R <[stephen.parretti@verizon.com](mailto:stephen.parretti@verizon.com)>  
**Cc:** Fitzgerald, Michael <[mike.fitzgerald@verizon.com](mailto:mike.fitzgerald@verizon.com)>; [m.yancey1@verizon.com](mailto:m.yancey1@verizon.com); Hill, Nathaniel RT (Nate) <[nathaniel.hill@verizon.com](mailto:nathaniel.hill@verizon.com)>; Grassi, Laura <[Laura.Grassi@wsp.com](mailto:Laura.Grassi@wsp.com)>  
**Subject:** RE: [E] RE: CHPE Collocated Infrastructure Details\_EM&CP 4B, 6, and 7A MCI Verizon Business

Thank you Sir! Will call momentarily.

Ben Cole



[ben.cole@wsp.com](mailto:ben.cole@wsp.com)

---

**From:** Parretti, Stephan R <[stephen.parretti@verizon.com](mailto:stephen.parretti@verizon.com)>  
**Sent:** Tuesday, April 11, 2023 8:51 AM  
**To:** Cole, Benjamin <[Ben.Cole@wsp.com](mailto:Ben.Cole@wsp.com)>  
**Cc:** Fitzgerald, Michael <[mike.fitzgerald@verizon.com](mailto:mike.fitzgerald@verizon.com)>; [m.yancey1@verizon.com](mailto:m.yancey1@verizon.com); Hill, Nathaniel RT (Nate) <[nathaniel.hill@verizon.com](mailto:nathaniel.hill@verizon.com)>; Grassi, Laura <[Laura.Grassi@wsp.com](mailto:Laura.Grassi@wsp.com)>  
**Subject:** Re: [E] RE: CHPE Collocated Infrastructure Details\_EM&CP 4B, 6, and 7A MCI Verizon Business

Ben,

Mike Fitzgerald is no longer with Verizon Business. Please give me a call on the project when you have a chance.

Thanks

Steve P

--

OSP Sr. Engineer



--

OSP Sr. Engineer



---

NOTICE: This communication and any attachments ("this message") may contain information which is privileged, confidential, proprietary or otherwise subject to restricted disclosure under applicable law. This message is for the sole use of the intended recipient(s). Any unauthorized use, disclosure, viewing, copying, alteration, dissemination or distribution of, or reliance on, this message is strictly prohibited. If you have received this message in error, or you are not an authorized or intended recipient, please notify the sender immediately by replying to this message, delete this message and all copies from your e-mail system and destroy any printed copies.

-LAEmHhHzdJzBITWfa4Hgs7pbKI

--

OSP Sr. Engineer



## Cole, Benjamin

---

**From:** Cole, Benjamin  
**Sent:** Thursday, April 13, 2023 1:21 PM  
**To:** randazzov@mid-hudson.com  
**Cc:** Grassi, Laura  
**Subject:** RE: CHPE Collocated Infrastructure Details\_EM&CP 7A Mid Hudson Cablevision

Hello,

Please find the most current plan/profile drawings set available for download from the link below. The drawing set is being made available for your review and comment. The CPE project is seeking comments from your company with regard to how the proposed CHPE alignment interacts with Mid-Hudson assets. Per the first page of the drawing set there appears to be one interaction with the CHPE cables. Please provide any comments that you may have with respect to the CHPE alignment and your assets.

[CHPE-SUB-0114.04-00-Mid Hudson Cablevision - CI Owner Package - 7A - 03-21-2023.pdf](#)

Please let me know any questions or comments or if we should schedule a call to discuss.

Thank You,

Ben Cole



[ben.cole@wsp.com](mailto:ben.cole@wsp.com)

---


**From:** Cole, Benjamin  
**Sent:** Wednesday, March 29, 2023 4:45 PM  
**To:** randazzov@mid-hudson.com  
**Cc:** Grassi, Laura <Laura.Grassi@wsp.com>  
**Subject:** RE: CHPE Collocated Infrastructure Details\_EM&CP 7A Mid Hudson Cablevision  
**Importance:** High

Good Afternoon,

Please see information below and a plan/profile drawing set available at the following link. We are seeking comments from your company with regard to how the proposed CHPE alignment interacts with Mid-Hudson assets.

[Package 7A Mid Hudson Cablevision Interim Design](#)

Please provide any comments or feedback that you may have or let me know if you would like to have a call to discuss the CHPE project.

I can be reached here by email, or via phone at .

Thanks,

Ben Cole



[ben.cole@wsp.com](mailto:ben.cole@wsp.com)

---

**From:** Cole, Benjamin

**Sent:** Thursday, September 22, 2022 10:09 PM

**To:** [randazzov@mid-hudson.com](mailto:randazzov@mid-hudson.com)

**Subject:** CHPE Collocated Infrastructure Details\_EM&CP 7A Mid Hudson Cablevision

Good Evening,

I'm writing on behalf of Transmission Developers Inc. ("TDI"), owner of the Champlain Hudson Power Express ("CHPE" or "Project") transmission line project. The purpose of this correspondence is to provide more detailed information related to how the CHPE project is designed to interact with your infrastructure and to solicit feedback from your company regarding the Project's alignment.

As you may recall from previous communications from Rick Chase at TDI, the CHPE is a fully permitted 339-mile underground and underwater high voltage direct current (HVDC) electric transmission line that will import up to 1,250 MW of renewable power from Canada and send it to the New York City metro area (see <https://chpexpress.com> for additional information).

At the link below please find design drawings of the proposed CHPE alignment where it involves your infrastructure within the Segment 6 Environmental Management and Construction Plan ("EM&CP") Package 7A.

Link: [Package 7A Mid Hudson Cablevision Co-Located Infrastructure 2022-09-15.pdf](#)

TDI will be submitting these plans to the New York State Public Service Commission ("PSC") for portions of the Project in the Town of Catskill. This information is a follow-up to previous communications to you providing general project information and typical infrastructure crossing drawings.

Please review the linked information regarding the CHPE alignment relating to your infrastructure and provide concurrence with the Project's cable separation and alignment and any feedback to me ([ben.cole@wsp.com](mailto:ben.cole@wsp.com)) by October 7, 2022. It is important to TDI that the construction and operation of the CHPE project does not interfere with the continued operation of your infrastructure.

To the extent that the CHPE alignment interacts with your infrastructure within future Segment EM&CP submissions, we will provide you with similar drawings in advance of those filings. I look forward to coordinating with you as we finalize the design of the CHPE project.

Sincerely,

Ben Cole

WSP USA, on behalf of TDI



[ben.cole@wsp.com](mailto:ben.cole@wsp.com)



## Cole, Benjamin

---

**From:** Cole, Benjamin  
**Sent:** Monday, April 17, 2023 10:03 AM  
**To:** Mann, Kenneth A  
**Cc:** Burgio, Chad M; Frasier, Aaron W; Grassi, Laura  
**Subject:** RE: CHPE Collocated Infrastructure Details\_EM&CP 3 and 7A Time Warner

Great. Thank you Ken.

Ben Cole

[ben.cole@wsp.com](mailto:ben.cole@wsp.com)

---

**From:** Mann, Kenneth A <Kenneth.Mann@charter.com>  
**Sent:** Friday, April 14, 2023 1:34 PM  
**To:** Cole, Benjamin <Ben.Cole@wsp.com>  
**Cc:** Burgio, Chad M <Chad.Burgio@charter.com>; Frasier, Aaron W <Aaron.Frasier@charter.com>; Grassi, Laura <Laura.Grassi@wsp.com>  
**Subject:** RE: CHPE Collocated Infrastructure Details\_EM&CP 3 and 7A Time Warner

I have reviewed both locations and we do have Spectrum Fiber present overhead. If you have any further questions, please let me know.

Ken



Kenneth Mann | Construction Coordinator II | [Kenneth.Mann@Charter.com](mailto:Kenneth.Mann@Charter.com)

---

**From:** Cole, Benjamin <[Ben.Cole@wsp.com](mailto:Ben.Cole@wsp.com)>  
**Sent:** Thursday, April 13, 2023 4:38 PM  
**To:** Mann, Kenneth A <[Kenneth.Mann@charter.com](mailto:Kenneth.Mann@charter.com)>  
**Cc:** Burgio, Chad M <[Chad.Burgio@charter.com](mailto:Chad.Burgio@charter.com)>; Frasier, Aaron W <[Aaron.Frasier@charter.com](mailto:Aaron.Frasier@charter.com)>; Tyrrell, Thom C <[Thom.Tyrrell@charter.com](mailto:Thom.Tyrrell@charter.com)>; Grassi, Laura <[Laura.Grassi@wsp.com](mailto:Laura.Grassi@wsp.com)>  
**Subject:** [EXTERNAL] RE: CHPE Collocated Infrastructure Details\_EM&CP 3 and 7A Time Warner

**CAUTION:** The e-mail below is from an external source. Please exercise caution before opening attachments, clicking links, or following guidance.

Hi Ken, All,

At the link please find the updated plan/profile drawing set for CHPE Package 7A.

[CHPE-SUB-0114.04-00-Time Warner - CI Owner Package - 7A - 03-21-2023.pdf](#)

Please let me know if you have additional comments or recognize any conflicts with the CHPE alignment in this area.

Thank You,

Ben Cole

[ben.cole@wsp.com](mailto:ben.cole@wsp.com)

---

**From:** Mann, Kenneth A <[Kenneth.Mann@charter.com](mailto:Kenneth.Mann@charter.com)>  
**Sent:** Friday, September 23, 2022 8:53 AM  
**To:** Cole, Benjamin <[Ben.Cole@wsp.com](mailto:Ben.Cole@wsp.com)>  
**Subject:** RE: CHPE Collocated Infrastructure Details\_EM&CP 3 and 7A Time Warner

Spectrum facilities are commented on first page



Kenneth Mann | Construction Coordinator II | [Kenneth.Mann@Charter.com](mailto:Kenneth.Mann@Charter.com)

---

**From:** Cole, Benjamin <[Ben.Cole@wsp.com](mailto:Ben.Cole@wsp.com)>  
**Sent:** Thursday, September 22, 2022 10:13 PM  
**To:** Mann, Kenneth A <[Kenneth.Mann@charter.com](mailto:Kenneth.Mann@charter.com)>; Burgio, Chad M <[Chad.Burgio@charter.com](mailto:Chad.Burgio@charter.com)>; Frasier, Aaron W <[Aaron.Frasier@charter.com](mailto:Aaron.Frasier@charter.com)>  
**Subject:** [EXTERNAL] CHPE Collocated Infrastructure Details\_EM&CP 3 and 7A Time Warner

**CAUTION:** The e-mail below is from an external source. Please exercise caution before opening attachments, clicking links, or following guidance.

Good Evening All,

I'm writing on behalf of Transmission Developers Inc. ("TDI"), owner of the Champlain Hudson Power Express ("CHPE" or "Project") transmission line project. The purpose of this correspondence is to provide more detailed information related to how the CHPE project is designed to interact with your infrastructure and to solicit feedback from your company regarding the Project's alignment.

As you may recall from previous communications from Rick Chase at TDI, the CHPE is a fully permitted 339-mile underground and underwater high voltage direct current (HVDC) electric transmission line that will import up to 1,250 MW of renewable power from Canada and send it to the New York City metro area (see <https://chpexpress.com> for additional information).

At the links below please find design drawings of the proposed CHPE alignment where it involves your infrastructure within the Segment 6 Environmental Management and Construction Plan ("EM&CP") Packages 3 and 7A.

Link: [CHPE-SUB-0108-00-Time Warner - Utility Matrix 8.24.2022.pdf](#)  
Link: [Package 7A Time Warner Co-Located Infrastructure 2022-09-15.pdf](#)

TDI will be submitting these plans to the New York State Public Service Commission ("PSC") for portions of the Project in the Towns Fort Edward, Moreau, Northumberland, Wilton, and Catskill. This information is a follow-up to previous communications to you providing general project information and typical infrastructure crossing drawings.

Please review the linked information regarding the CHPE alignment relating to your infrastructure and provide concurrence with the Project's cable separation and alignment and any feedback to me ([ben.cole@wsp.com](mailto:ben.cole@wsp.com)) by October 7, 2022. It is important to TDI that the construction and operation of the CHPE project does not interfere with the continued operation of your infrastructure.

To the extent that the CHPE alignment interacts with your infrastructure within future Segment EM&CP submissions, we will provide you with similar drawings in advance of those filings. I look forward to coordinating with you as we finalize the design of the CHPE project.

Sincerely,

Ben Cole  
WSP USA, on behalf of TDI

[ben.cole@wsp.com](mailto:ben.cole@wsp.com)

---

NOTICE: This communication and any attachments ("this message") may contain information which is privileged, confidential, proprietary or otherwise subject to restricted disclosure under applicable law. This message is for the sole use of the intended recipient(s). Any unauthorized use, disclosure, viewing, copying, alteration, dissemination or distribution of, or reliance on, this message is strictly prohibited. If you have received this message in error, or you are not an authorized or intended recipient, please notify the sender immediately by replying to this message, delete this message and all copies from your e-mail system and destroy any printed copies.

-LAEmHhHzdJz8ITWfa4Hgs7pbKI

The contents of this e-mail message and any attachments are intended solely for the addressee(s) and may contain confidential and/or legally privileged information. If you are not the intended recipient of this message or if this message has been addressed to you in error, please immediately alert the sender by reply e-mail and then delete this message and any attachments. If you are not the intended recipient, you are notified that any use, dissemination, distribution, copying, or storage of this message or any attachment is strictly prohibited.

The contents of this e-mail message and any attachments are intended solely for the addressee(s) and may contain confidential and/or legally privileged information. If you are not the intended recipient of this message or if this message has been addressed to you in error, please immediately alert the sender by reply e-mail and then delete this message and any attachments. If you are not the intended recipient, you are notified that any use, dissemination, distribution, copying,

or storage of this message or any attachment  
is strictly prohibited.

## Cole, Benjamin

---

**From:** Cole, Benjamin  
**Sent:** Thursday, April 13, 2023 5:32 PM  
**To:** 'Hill, Nathaniel RT (Nate)'  
**Cc:** Grassi, Laura; Jasinski, Gregory T.  
**Subject:** RE: [E] RE: CHPE Collocated Infrastructure Details\_EM&CP 4A and 7B Verizon

Hello again Nate,

Sorry for all of the messages – lots going on currently on the project, as I know you're aware.

The updated drawing set for Package 7A recently became available. There only appears to be three interactions in the set. Please let me know if you have feedback or comments on the updated 7A set.

From the contact info you've provided, I think this section is your territory. Please let me know if incorrect.

[CHPE-SUB-0114.04-00-Verizon - CI Owner Package - 7A - 03-21-2023.pdf](#)

Thank you,

Ben Cole



[ben.cole@wsp.com](mailto:ben.cole@wsp.com)

**Package 7A** (Greene County)



---

**From:** Cole, Benjamin

**Sent:** Wednesday, March 29, 2023 3:59 PM

**To:** Hill, Nathaniel RT (Nate) <nathaniel.hill@verizon.com>

**Cc:** Larue III, Anthony J <tony.j.larue@verizon.com>; Jason R Adkison <jason.r.adkison@one.verizon.com>; Brown, Michael <Michael.Brown@wsp.com>

**Subject:** RE: [E] RE: CHPE Collocated Infrastructure Details\_EM&CP 4A and 7B Verizon

Hi Nate,

Sorry if I missed it, but is there feedback available for Package 7A? I had sent it via a separate message on 2/2/22 but don't see comments. The Plan/Profile drawing set is available at the link below.

[CHPE Verizon Package 7A](#)

Thanks,

Ben Cole

[REDACTED]

[ben.cole@wsp.com](mailto:ben.cole@wsp.com)

---

**From:** Hill, Nathaniel RT (Nate) <[nathaniel.hill@verizon.com](mailto:nathaniel.hill@verizon.com)>

**Sent:** Wednesday, November 2, 2022 1:53 PM

**To:** Cole, Benjamin <[Ben.Cole@wsp.com](mailto:Ben.Cole@wsp.com)>

**Cc:** Larue III, Anthony J <[tony.j.larue@verizon.com](mailto:tony.j.larue@verizon.com)>; Jason R Adkison <[jason.r.adkison@one.verizon.com](mailto:jason.r.adkison@one.verizon.com)>; Brown, Michael <[Michael.Brown@wsp.com](mailto:Michael.Brown@wsp.com)>

**Subject:** Re: [E] RE: CHPE Collocated Infrastructure Details\_EM&CP 4A and 7B Verizon

That'd be me! Feel free to send it over and I'll take a look.

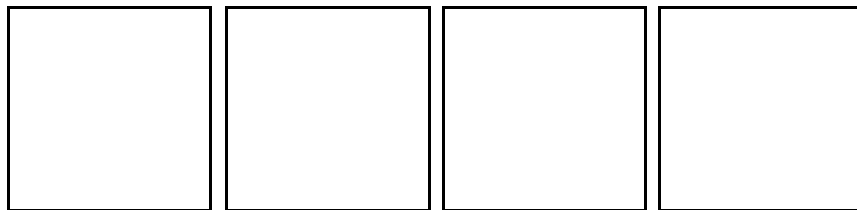
Thanks,

[REDACTED]

**Nate Hill**  
**(he/him)**

Outside Plant Design Engineer - Adirondacks/Catskills  
NYS/MA/RI Access Engineering

[REDACTED]



On Wed, Nov 2, 2022 at 10:44 AM Cole, Benjamin <[Ben.Cole@wsp.com](mailto:Ben.Cole@wsp.com)> wrote:

Hi Nate, All,

We have a design package (7A) for the Catskill, NY area. Is this the group responsible for that area?



Thank You,

Ben

Ben Cole



[ben.cole@wsp.com](mailto:ben.cole@wsp.com)

---

**From:** Hill, Nathaniel RT (Nate) <[nathaniel.hill@verizon.com](mailto:nathaniel.hill@verizon.com)>

**Sent:** Monday, October 10, 2022 4:06 PM

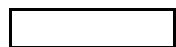
**To:** Cole, Benjamin <[Ben.Cole@wsp.com](mailto:Ben.Cole@wsp.com)>

**Cc:** Larue III, Anthony J <[tony.j.larue@verizon.com](mailto:tony.j.larue@verizon.com)>; Jason R Adkison <[jason.r.adkison@one.verizon.com](mailto:jason.r.adkison@one.verizon.com)>

**Subject:** Re: [E] RE: CHPE Collocated Infrastructure Details\_EM&CP 4A and 7B Verizon

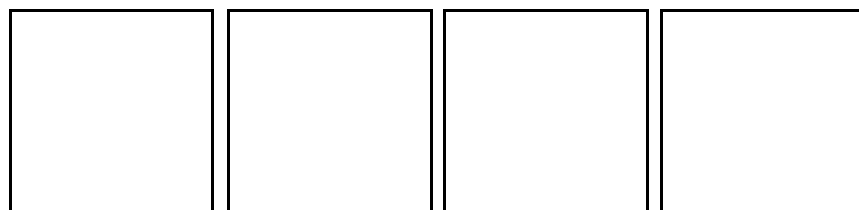
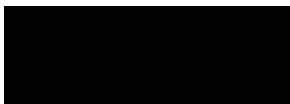
They'd be the correct team!

Thanks,



**Nate Hill**  
**(he/him)**

Outside Plant Design Engineer - Adirondacks/Catskills  
NYS/MA/RI Access Engineering



On Mon, Oct 10, 2022 at 3:59 PM Cole, Benjamin <[Ben.Cole@wsp.com](mailto:Ben.Cole@wsp.com)> wrote:

Ah, sounds good. Thank You Tony. I'll make a note to reach back out to Jason on 4A/Ballston To Glenville.

Nate – you referenced several contacts in our recent inquiry about a crossing between Lloyd and Poughkeepsie (Kei, Carl, Sharon). Are those the folks I should contact for 7B/downstate/Rockland?

Thank You,

Ben Cole

[REDACTED]

[ben.cole@wsp.com](mailto:ben.cole@wsp.com)

---

**From:** Larue III, Anthony J <[tony.j.larue@verizon.com](mailto:tony.j.larue@verizon.com)>

**Sent:** Monday, October 10, 2022 3:46 PM

**To:** Cole, Benjamin <[Ben.Cole@wsp.com](mailto:Ben.Cole@wsp.com)>

**Cc:** [nathaniel.hill@verizon.com](mailto:nathaniel.hill@verizon.com); Jason R Adkison <[jason.r.adkison@one.verizon.com](mailto:jason.r.adkison@one.verizon.com)>

**Subject:** Re: [E] RE: CHPE Collocated Infrastructure Details\_EM&CP 4A and 7B Verizon

Good Afternoon Ben, Jason is out on vacation this week - This appears mostly to be in his turf at least the Ballston to Glenville section of this build - The Rockland end of this build is out of our local turf. Nate were you involved with this at all, do you know if the southern tier was notified of any work for Rockland or do you know if the Ballston to Glenville was already looked at?

Thanks

Tony

On Mon, Oct 10, 2022 at 2:46 PM Cole, Benjamin <[Ben.Cole@wsp.com](mailto:Ben.Cole@wsp.com)> wrote:

Good Afternoon Jason, Tony,

I'm checking in to see if you have any comments/feedback regarding the information below and in the drawings at the links.

Thank You,

Ben Cole



[ben.cole@wsp.com](mailto:ben.cole@wsp.com)

---

**From:** Cole, Benjamin

**Sent:** Thursday, September 22, 2022 10:35 PM

**To:** [nathaniel.hill@verizon.com](mailto:nathaniel.hill@verizon.com); Anthony J Larue III <[tony.j.larue@verizon.com](mailto:tony.j.larue@verizon.com)>; Jason R Adkison <[jason.r.adkison@one.verizon.com](mailto:jason.r.adkison@one.verizon.com)>

**Subject:** CHPE Collocated Infrastructure Details\_EM&CP 4A and 7B Verizon

Good Evening Gentlemen,

Nate provided your email addresses in a previous message and I am assuming both of the design packages linked below fall in your territory.

I'm writing on behalf of Transmission Developers Inc. ("TDI"), owner of the Champlain Hudson Power Express ("CHPE" or "Project") transmission line project. The purpose of this correspondence is to provide more detailed information related to how the CHPE project is designed to interact with your infrastructure and to solicit feedback from your company regarding the Project's alignment.

As you may recall from previous communications from Rick Chase at TDI, the CHPE is a fully permitted 339-mile underground and underwater high voltage direct current (HVDC) electric transmission line that will import up to 1,250 MW of renewable power from Canada and send it to the New York City metro area (see <https://chpexpress.com> for additional information).

At the links below please find design drawings of the proposed CHPE alignment where it involves your infrastructure within Environmental Management and Construction Plan ("EM&CP") Packages 4A and 7B.

Links: [CHPE-SUB-0092.01-00-Package 4A Verizon Co-Located Infrastructure 2022-09-13.pdf](#)  
[7B Verizon Co-Located Infrastructure Package 2022-09-16.pdf](#)

[CHPE-SUB-0119-00-Package](#)

TDI will be submitting these plans to the New York State Public Service Commission ("PSC") for portions of the Project in your area.

Please review the linked information regarding the CHPE alignment relating to your infrastructure and provide concurrence with the Project's cable separation and alignment and any feedback to me ([ben.cole@wsp.com](mailto:ben.cole@wsp.com)) by October 7, 2022. It is important to TDI that the construction and operation of the CHPE project does not interfere with the continued operation of your infrastructure.

To the extent that the CHPE alignment interacts with your infrastructure within future Segment EM&CP submissions, we will provide you with similar drawings in advance of those filings. I look forward to coordinating with you as we finalize the design of the CHPE project.

Sincerely,



**Ben Cole, PG**

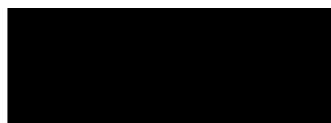
Lead Consultant

Professional Geologist



[ben.cole@wsp.com](mailto:ben.cole@wsp.com)

WSP USA



[wsp.com](http://wsp.com)

---

NOTICE: This communication and any attachments ("this message") may contain information which is privileged, confidential, proprietary or otherwise subject to restricted disclosure under applicable law. This message is for the sole use of the intended recipient(s). Any unauthorized use, disclosure, viewing, copying, alteration, dissemination or distribution of, or reliance on, this message is strictly prohibited. If you have received this message in error, or you are not an authorized or intended recipient, please notify the sender immediately by replying to this message, delete this message and all copies from your e-mail system and destroy any printed copies.

-LAEmHhHzdJzBITWfa4Hgs7pbKI

--

Tony J. LaRue



Engr III Spec-Ntwk Eng&Ops



## Cole, Benjamin

---

**From:** Cole, Benjamin  
**Sent:** Thursday, April 13, 2023 4:49 PM  
**To:** dfinch@townofcatskillny.gov; sbeers@townofcatskillny.gov; Elzzo@townofcatskillny.gov  
**Cc:** Gibson, Robert  
**Subject:** RE: CHPE Collocated Infrastructure Details\_EM&CP 7A Town of Catskill

Good Afternoon,

For your review and comment, at the following link please find an updated drawing set that depicts the current planned CHPE alignment where it interacts with Town infrastructure:

[CHPE-SUB-0114.04-00-Town of Catskill - CI Owner Package - 7A - 03-21-2023.pdf](#)

Please provide any comments or feedback that you may have so it may be incorporated as the design moves toward completion.

Thank You,

Ben Cole

[ben.cole@wsp.com](mailto:ben.cole@wsp.com)

---

**From:** Cole, Benjamin  
**Sent:** Thursday, September 22, 2022 10:10 PM  
**To:** dfinch@townofcatskillny.gov; sbeers@townofcatskillny.gov; Elzzo@townofcatskillny.gov  
**Subject:** CHPE Collocated Infrastructure Details\_EM&CP 7A Town of Catskill

Good Morning,

I'm writing on behalf of Transmission Developers Inc. ("TDI"), owner of the Champlain Hudson Power Express ("CHPE" or "Project") transmission line project. The purpose of this correspondence is to provide more detailed information related to how the CHPE project is designed to interact with your infrastructure and to solicit feedback from your company regarding the Project's alignment.

As you may recall from previous communications from Rick Chase at TDI, the CHPE is a fully permitted 339-mile underground and underwater high voltage direct current (HVDC) electric transmission line that will import up to 1,250 MW of renewable power from Canada and send it to the New York City metro area (see <https://chpexpress.com> for additional information).

At the link below please find design drawings of the proposed CHPE alignment where it involves your infrastructure within the Segment 6 Environmental Management and Construction Plan ("EM&CP") Package 7A.

Link: [Package 7A Town of Catskill Co-Located Infrastructure 2022-09-15.pdf](#)

TDI will be submitting these plans to the New York State Public Service Commission ("PSC") for portions of the Project in the Town of Catskill. This information is a follow-up to previous communications to you providing general project information and typical infrastructure crossing drawings.

Please review the linked information regarding the CHPE alignment relating to your infrastructure and provide concurrence with the Project's cable separation and alignment and any feedback to me ([ben.cole@wsp.com](mailto:ben.cole@wsp.com)) by October 7, 2022. It is important to TDI that the construction and operation of the CHPE project does not interfere with the continued operation of your infrastructure.

To the extent that the CHPE alignment interacts with your infrastructure within future Segment EM&CP submissions, we will provide you with similar drawings in advance of those filings. I look forward to coordinating with you as we finalize the design of the CHPE project.

Sincerely,

Ben Cole  
WSP USA, on behalf of TDI

  
[ben.cole@wsp.com](mailto:ben.cole@wsp.com)



Please note that as discussed during recent communications, we still plan to stand up a file transfer page to provide additional information to CHG&E moving forward. Because that has not yet happened, and in the interest of expediency, at the links below please find design drawings of the proposed CHPE alignment where it involves your infrastructure within the Segment 6 Environmental Management and Construction Plan ("EM&CP") Packages 6 and 7A.

Link: [Package 6 CHG&E Co-Located Infrastructure 2022-09-14.pdf \[wsp-chpe-api.azurewebsites.net\]](#)

Link: [Package 7A Central Hudson Gas & Electric Co-Located Infrastructure 2022-09-15.pdf \[wsp-chpe-api.azurewebsites.net\]](#)

TDI will be submitting these plans to the New York State Public Service Commission ("PSC") for portions of the Project in the Towns of Coeymans, New Baltimore, Coxsackie, Athens, and Catskill. This information is a follow-up to previous communications to you providing general project information and typical infrastructure crossing drawings.

Please review the linked information regarding the CHPE alignment relating to your infrastructure and provide concurrence with the Project's cable separation and alignment and any feedback to me at [ben.cole@wsp.com](mailto:ben.cole@wsp.com). It is important to TDI that the construction and operation of the CHPE project does not interfere with the continued operation of your infrastructure.

To the extent that the CHPE alignment interacts with your infrastructure within future Segment EM&CP submissions, we will provide you with similar drawings in advance of those filings. I look forward to coordinating with you as we finalize the design of the CHPE project.

Sincerely,

Ben Cole

WSP USA, on behalf of TDI



[ben.cole@wsp.com](mailto:ben.cole@wsp.com)

---

NOTICE: This communication and any attachments ("this message") may contain information which is privileged, confidential, proprietary or otherwise subject to restricted disclosure under applicable law. This message is for the sole use of the intended recipient(s). Any unauthorized use, disclosure, viewing, copying, alteration, dissemination or distribution of, or reliance on, this message is strictly prohibited. If you have received this message in error, or you are not an authorized or intended recipient, please notify the sender immediately by replying to this message, delete this message and all copies from your e-mail system and destroy any printed copies.

-LAEmHhHzdJzBITWfa4Hgs7pbKI