

NYS ROUTE 23 TO SOUTHBOUND US HIGHWAY 9W DETOUR PLAN
NTS

DETOUR SIGN SCHEDULE

A

DETOUR SOUTH 9W

M4-8* (24"x12")
M3-3 (24"x12")
M1-4 (24"x24")
M6-3 (21"x15")

B

DETOUR SOUTH 9W

M4-8* (24"x12")
M3-3 (24"x12")
M1-4 (24"x24")
M6-1R (21"x15")

C

DETOUR SOUTH 9W

M4-8* (24"x12")
M3-3 (24"x12")
M1-4 (24"x24")
M6-1L (21"x15")

D

DETOUR SOUTH 9W

M4-8* (24"x12")
M3-3 (24"x12")
M1-4 (24"x24")
M5-1L (21"x15")

E

DETOUR SOUTH 9W

M4-8* (24"x12")
M3-3 (24"x12")
M1-4 (24"x24")
M5-1R (21"x15")

ISSUED FOR CONSTRUCTION

6/14/2023

LEGEND

WORK SPACE

DIRECTION OF TRAFFIC DETOUR

SIGN (TEMPORARY)

CHANNELIZING DEVICE

BLACK ON ORANGE

File: T:\21075 CHPE E&M&P\CAD\WORKING DRAWINGS_P7A\21162_7A_0-509-SW PHASE 2.DWG Saved: 6/14/2023 10:19:43 AM Plotted: 6/14/2023 12:08:10 PM Current User: Johanna Lang-Bentley LastSavedBy: Jlangbentley

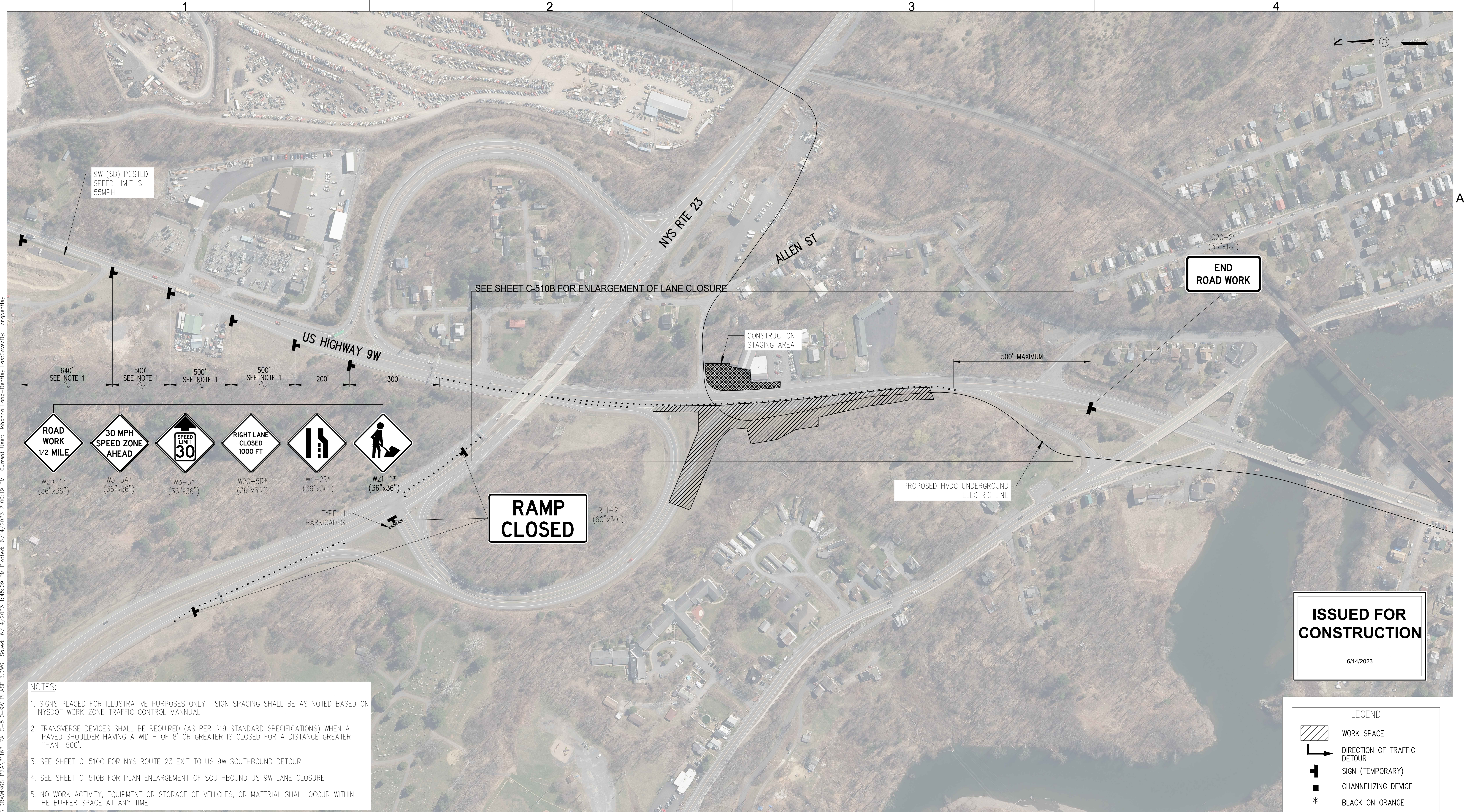
IT IS A VIOLATION OF LAW FOR ANY PERSON, UNLESS THEY ARE ACTING UNDER THE DIRECTION OF A LICENSED PROFESSIONAL ENGINEER, ARCHITECT, LANDSCAPE ARCHITECT OR LAND SURVEYOR TO ALTER AN ITEM IN ANY WAY. IF AN ITEM BEARING THE STAMP OF A LICENSED PROFESSIONAL IS ALTERED, THE ALTERING ENGINEER, ARCHITECT, LANDSCAPE ARCHITECT OR LAND SURVEYOR SHALL STAMP THE DOCUMENT AND INCLUDE THE NOTATION "ALTERED BY" FOLLOWED BY THEIR SIGNATURE, THE DATE OF SUCH ALTERATION, AND A SPECIFIC DESCRIPTION OF THE ALTERATION.

| | | | | | |
|-----|------------|------------------------------------|-----|-----|--|
| | | | | | |
| | | | | | |
| | | | | | |
| | | | | | |
| | | | | | |
| 0 | 06/19/2023 | ISSUED FOR CONSTRUCTION SUBMISSION | JLB | TD | |
| No. | DATE | SUBMITTAL / REVISION DESCRIPTION | DB | APP | |

CHAMPLAIN HUDSON POWER EXPRESS
SEGMENT 11 (PACKAGE 7A) - CSX: CATSKILL
WORK ZONE TRAFFIC CONTROL
NYS ROUTE 23 TO SB US 9W DETOUR PLAN

| | | | | | | | | |
|-----------|----|--------------|----|--------------|----------|----------|--------|------------|
| DRAWN BY: | SH | DESIGNED BY: | SH | APPROVED BY: | SCALE | AS SHOWN | DATE | 06/19/2023 |
| | | | | | REV. NO. | | SH.NO. | 8 OF |

| | |
|--------------------|--------|
| KIEWIT PROJECT NO. | 21162 |
| EDR PROJECT NO. | 21075 |
| DRAWING NO. | C-509C |



NOTES:

1. SIGNS PLACED FOR ILLUSTRATIVE PURPOSES ONLY. SIGN SPACING SHALL BE AS NOTED BASED ON NYSDOT WORK ZONE TRAFFIC CONTROL MANUAL

2. TRANSVERSE DEVICES SHALL BE REQUIRED (AS PER 619 STANDARD SPECIFICATIONS) WHEN A PAVED SHOULDER HAVING A WIDTH OF 8' OR GREATER IS CLOSED FOR A DISTANCE GREATER THAN 1500'.

3. SEE SHEET C-510C FOR NYS ROUTE 23 EXIT TO US 9W SOUTHBOUND DETOUR

4. SEE SHEET C-510B FOR PLAN ENLARGEMENT OF SOUTHBOUND US 9W LANE CLOSURE

5. NO WORK ACTIVITY, EQUIPMENT OR STORAGE OF VEHICLES, OR MATERIAL SHALL OCCUR WITHIN THE BUFFER SPACE AT ANY TIME.

ISSUED FOR
CONSTRUCTION

6/14/2023

LEGEND

- WORK SPACE
- DIRECTION OF TRAFFIC DETOUR
- SIGN (TEMPORARY)
- CHANNELIZING DEVICE
- BLACK ON ORANGE

US HIGHWAY 9W SOUTHBOUND LANE CLOSURE
NTS

IT IS A VIOLATION OF LAW FOR ANY PERSON, UNLESS THEY ARE ACTING UNDER THE DIRECTION OF A LICENSED PROFESSIONAL ENGINEER, ARCHITECT, LANDSCAPE ARCHITECT OR LAND SURVEYOR TO ALTER AN ITEM IN ANY WAY. IF AN ITEM BEARING THE STAMP OF A LICENSED PROFESSIONAL IS ALTERED, THE ALTERING ENGINEER, ARCHITECT, LANDSCAPE ARCHITECT OR LAND SURVEYOR SHALL STAMP THE DOCUMENT AND INCLUDE THE NOTATION "ALTERED BY" FOLLOWED BY THEIR SIGNATURE, THE DATE OF SUCH ALTERATION, AND A SPECIFIC DESCRIPTION OF THE ALTERATION.

| No. | DATE | SUBMITTAL / REVISION DESCRIPTION | DB | APP |
|-----|------------|------------------------------------|-----|-----|
| 0 | 06/19/2023 | ISSUED FOR CONSTRUCTION SUBMISSION | JLB | TD |

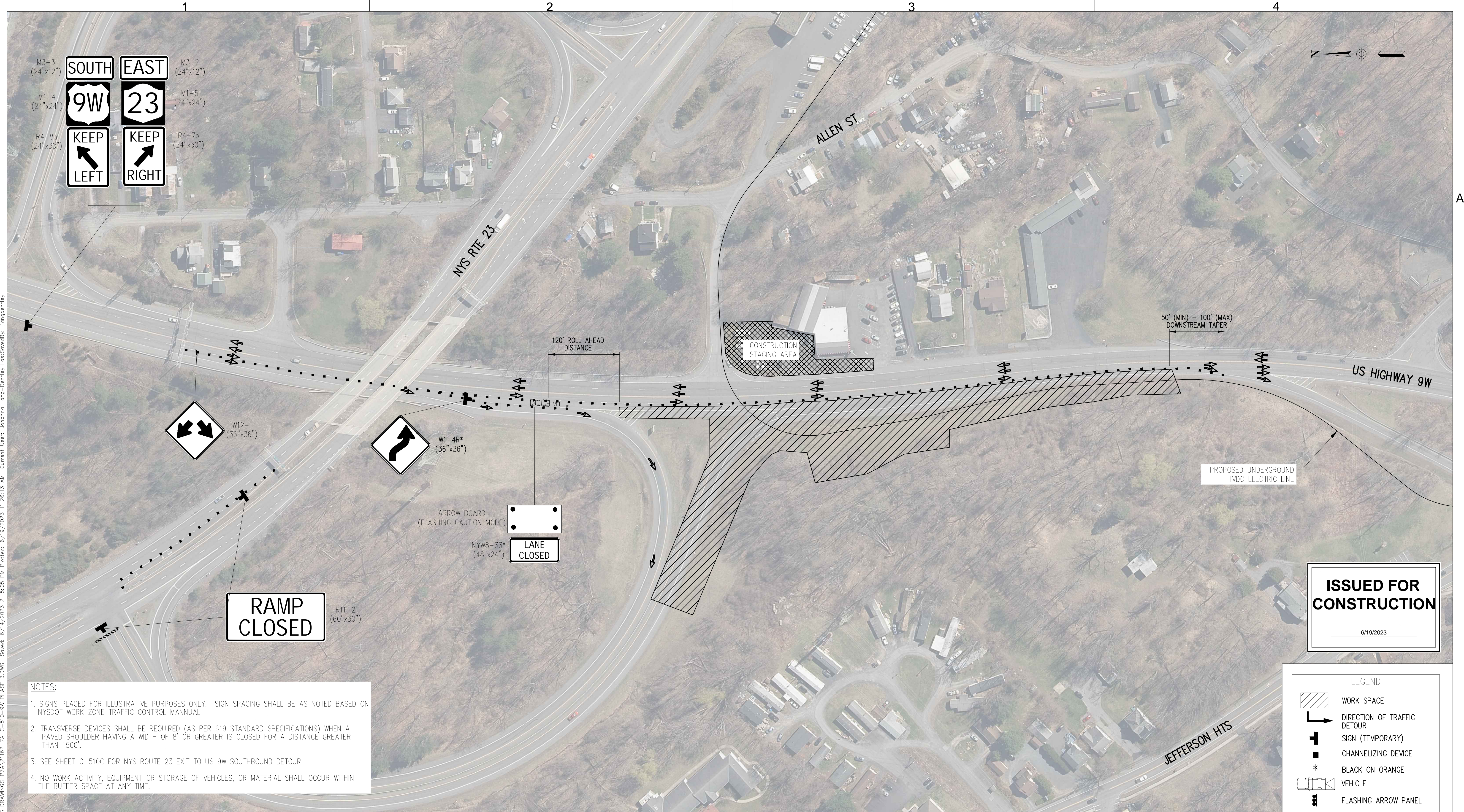
CHAMPLAIN HUDSON POWER EXPRESS
SEGMENT 11 (PACKAGE 7A) - CSX: CATSKILL
WORK ZONE TRAFFIC CONTROL
US HIGHWAY 9W (SB) LANE CLOSURE

| DRAWN BY: | SH | DESIGNED BY: | SH | APPROVED BY: | TD | SCALE | AS SHOWN |
|-----------|----|--------------|----|--------------|----|----------|----------|
| | | | | | | REV. NO. | |

| DATE | SH.NO. | OF |
|------------|--------|----|
| 06/19/2023 | | |

KIEWIT PROJECT NO. 21162
EDR PROJECT NO. 21075
DRAWING NO. **C-510A**

File: T:\21075 CHPE EDR\CD\WORKING DRAWINGS_P7A\21162_7A_0-510-9W PHASE 3.DWG Saved: 6/14/2023 1:45:09 PM Plotted: 6/14/2023 2:00:19 PM Current User: Johanna Long-Bentley LastSavedBy: jlongbentley



CHPE

Champlain Hudson Power Express

PKS

Kiewit

EDR

a better environment

IT IS A VIOLATION OF LAW FOR ANY PERSON, UNLESS THEY ARE ACTING UNDER THE DIRECTION OF A LICENSED PROFESSIONAL ENGINEER, ARCHITECT, LANDSCAPE ARCHITECT OR LAND SURVEYOR TO ALTER AN ITEM IN ANY WAY. IF AN ITEM BEARING THE STAMP OF A LICENSED PROFESSIONAL IS ALTERED, THE ALTERING ENGINEER, ARCHITECT, LANDSCAPE ARCHITECT OR LAND SURVEYOR SHALL STAMP THE DOCUMENT AND INCLUDE THE NOTATION "ALTERED BY" FOLLOWED BY THEIR SIGNATURE, THE DATE OF SUCH ALTERATION, AND A SPECIFIC DESCRIPTION OF THE ALTERATION.

| | | | | |
|-----|------------|------------------------------------|-----|-----|
| 0 | 06/19/2023 | ISSUED FOR CONSTRUCTION SUBMISSION | JLB | TD |
| No. | DATE | SUBMITTAL / REVISION DESCRIPTION | DB | APP |

CHAMPLAIN HUDSON POWER EXPRESS

SEGMENT 11 (PACKAGE 7A) - CSX: CATSKILL

WORK ZONE TRAFFIC CONTROL

US HIGHWAY 9W (SB) LANE CLOSURE

DRAWN BY: SH

DESIGNED BY: SH

APPROVED BY: TD

SCALE AS SHOWN

REV. NO.

KIEWIT PROJECT NO.

21162

EDR PROJECT NO.

21075

DRAWING NO.

C-510B

DATE 06/19/2023

SH.NO. OF

File: T:\21075 CHPE EMD&P\CAD\WORKING DRAWINGS_P7A\21162_7A_0-510-9W PHASE 3.DWG Saved: 6/14/2023 2:15:05 PM Plotted: 6/19/2023 11:26:13 AM Current User: Johanna Lang-Bentley LastSavedBy: jlangbentley