

NOTICE OF CONSTRUCTION FOR LAKE CHAMPLAIN CABLE INSTALLATION, CHAMPLAIN HUDSON POWER EXPRESS

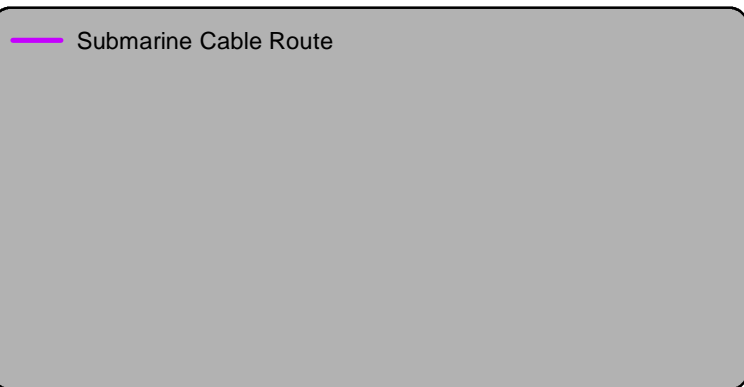
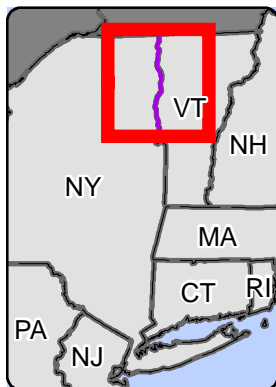
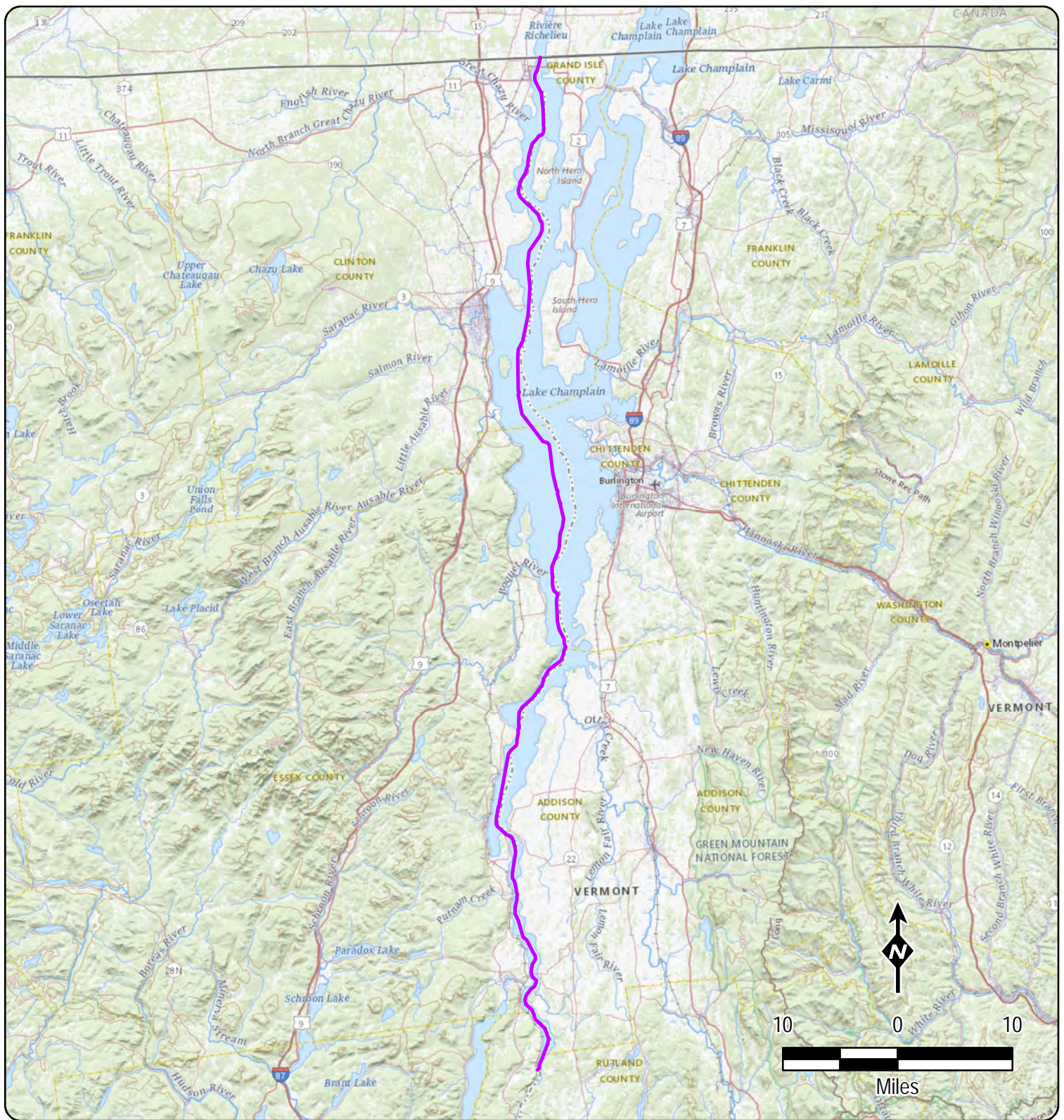
Please take notice that, on or about July 21, 2025, CHPE, LLC and CHPE Properties, Inc. (collectively referred to as “CHPE” or “Certificate Holders”) intend to commence work in the southern portion of Segment 18B, Lake Champlain Cable Installation, of the proposed Champlain Hudson Power Express (“CHPE”) Project, pursuant to the Environmental Management & Construction Plan (“EM&CP”) approved by the New York State Public Service Commission (“Commission”) on April 18, 2024. Work on this Segment began in 2024 and was suspended during the winter season. Activities north of Crown Point bridge related to utility protection measures resumed in May 2025, and cable installation activities in that area will resume on or about June 1, 2025. This notice concerns work south of the Crown Point bridge, which is anticipated to commence on or about July 21.


On April 18, 2013, the NYS Public Service Commission (Commission) issued to CHPE a certificate of environmental compatibility and public need (Certificate), pursuant to Article VII of the Public Service Law (PSL), to construct and operate the CHPE Project. The Segment 18B, Lake Champlain Cable Installation EM&CP, was approved by the Commission on April 18, 2024. The Certificate requires that, prior to construction of any portion of the Project, CHPE disseminate construction notices to the public and obtain a Notice to Proceed with Construction from the New York State Department of Public Service staff.

Work will be broken into phases, starting with the pre-lay grapnel run and debris removal phase; cable installation; and post-lay mattress installation. Details of the planned work locations, including an overview map of the proposed route, are available on the Project website at: <https://chpexpress.com/overview-of-public-documents/environmental-management-construction-plan/>. Cable installation work will occur on a 24-hour, 7-day-per-week basis to facilitate timely and efficient installation of the Facility. Some other types of construction, such as the pre-lay grapnel run and utility protection work, will generally occur during daylight hours, though those activities may require extending into later hours as needed. Where nighttime work is needed, noise and visual impact mitigation measures will be employed as needed to reduce impacts to nearby sensitive receptors, such as residences.

The full Commission docket for the Project (Case 10-T-0139) can be accessed via the Commission’s website at: <http://documents.dps.ny.gov/public/MatterManagement/CaseMaster.aspx?MatterCaseNo=10-T-0139> and electronic copies of EM&CP documents also will be available on the Project website at <https://chpexpress.com/overview-of-public-documents/environmental-management-construction-plan/>. Paper copies of the EM&CP submissions are available for viewing at the following local document repositories: Rouses Point Dodge Memorial Library, 144 Lake Street, Rouses Point, NY 12979; Plattsburgh Public Library, 19 Oak St., Plattsburgh, NY 12901 and Black Watch Memorial Library 99 Montcalm St., Ticonderoga, NY 12883.

CHPE has established a toll-free number for questions regarding the Project: 1-800-991-CHPE (2473). Questions or requests for further information can be directed to: publicoutreach@chpexpress.com.





CHAMPLAIN HUDSON POWER EXPRESS
Lake Champlain Marine Segment
Cable Installation EM&CP
Figure 1

Created: 1/9/2024