

## **Notice of Change to Segment 10 EM&CP For the Champlain Hudson Power Express Line**

Dear Stakeholder,

On or about March 18, 2025, CHPE LLC and CHPE Properties, Inc. (collectively referred to as “CHPE”) will submit a proposed major change to the approved Environmental Management & Construction Plan (“EM&CP”) for Segment 10 of the Champlain Hudson Power Express (“CHPE”) Project. The Segment 10 EM&CP was previously approved by the New York State Public Service Commission (“PSC”) on December 18, 2023. Segment 10 includes installation of approximately 20.9 miles of buried electrical transmission line within railroad and public road rights-of-way (ROWS) beginning in the Town of Bethlehem (Albany County) to the Town of Catskill (Greene County). This proposed change involves route modifications in the Town of New Baltimore, Greene County, to address complicated topography present along the CSX Railroad right-of-way. No additional or new environmental impacts would result from this requested change; however, these route adjustments shift the alignment outside of the previously approved Allowed Deviation Zone and therefore require PSC approval.

The PSC issued a Certificate of Environmental Compatibility and Public Need (“Certificate”) to CHPE on April 18, 2013 to construct and operate the CHPE Project. Pursuant to that Certificate, CHPE is required to circulate notices to certain landowners, utility owners, municipalities and agencies near the proposed Segment’s construction activities when it proposes to make a change to the Facility route approved in an EM&CP. This notice provides links and contact information which stakeholders can use to obtain further information or to submit comments on the proposed change. The EM&CP change must be reviewed and approved by the PSC before the change can be implemented.

An overview map showing the proposed EM&CP change accompanies this notice. Further details of the planned work locations will be made available on the Project website at: <https://chpexpress.com/overview-of-public-documents/environmental-management-construction-plan/>. Construction activities for this Segment are currently under way. Construction within Segment 10 will generally occur during daytime hours Monday through Saturday to minimize impacts, though some select activities may occur at night, on Sundays or state or federal holidays where necessary for safety, continuous operation requirements or for other limited circumstances.

### **Contact Information and Document Repositories**

CHPE has established a toll-free number for questions regarding the Project: 1-800-991-CHPE (2473). Questions or requests for further information can be directed to [publicoutreach@chpexpress.com](mailto:publicoutreach@chpexpress.com).

The EM&CP change documents are available on the PSC’s website at <http://documents.dps.ny.gov/public/MatterManagement/CaseMaster.aspx?MatterCaseNo=10-T-0139> and on the Project website <https://chpexpress.com/overview-of-public-documents/environmental-management-construction-plan/>.



623 Fifth Avenue, 20th Floor  
New York, New York 10022

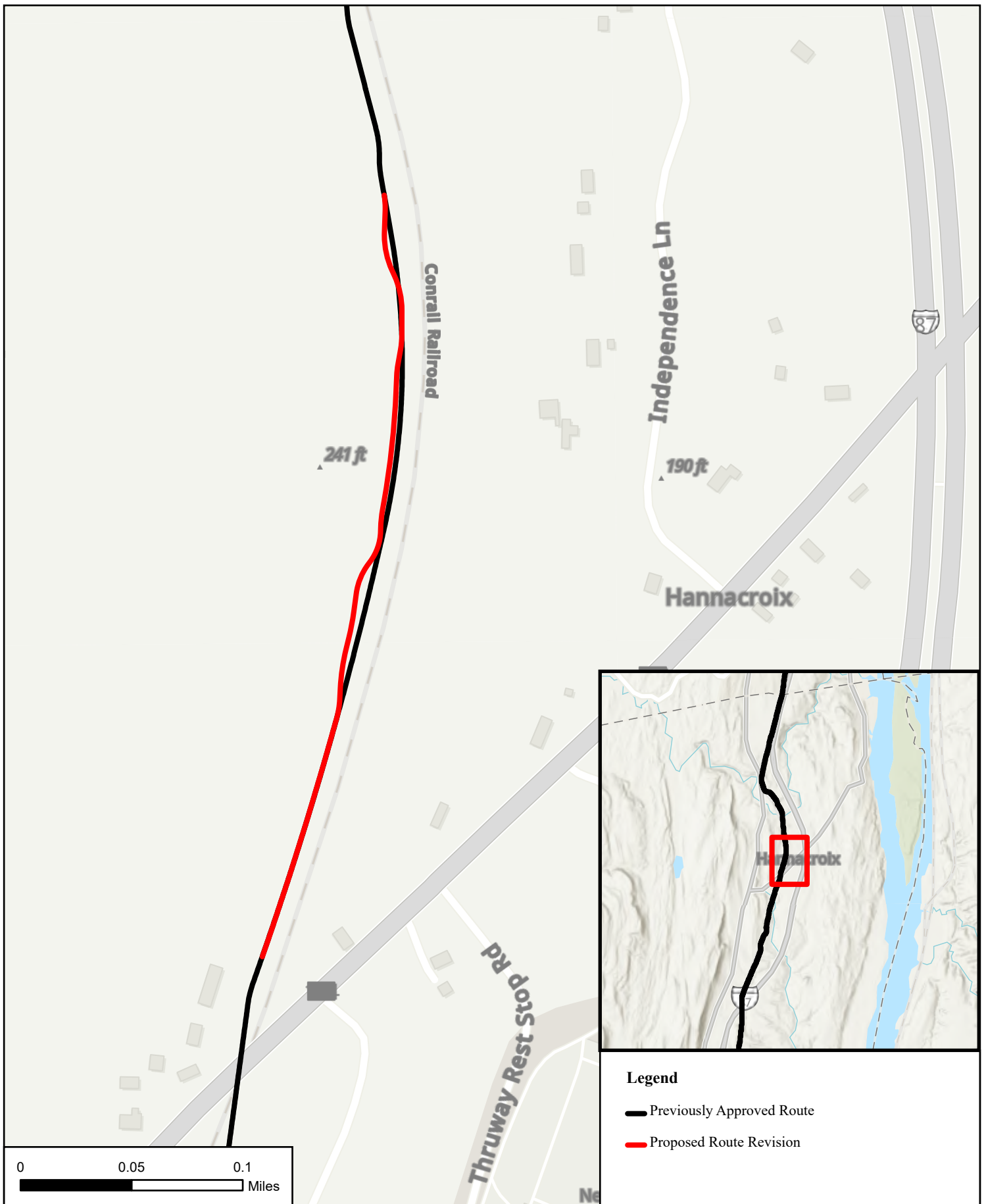
Paper copies of the EM&CP are available for viewing at the following local document repositories: Bethlehem Public Library, 451 Delaware Ave., Delmar, NY 12054; RCS Community Library, 95 Main St., Ravena, NY 12143; Heermance Memorial Library, 1 Ely St., Coxsackie, NY 12051.

**Filing Comments**



Any person wishing to be heard by the Commission on any matter related to the proposed EM&CP change may file written comments with the Commission Secretary by email at [secretary@dps.ny.gov](mailto:secretary@dps.ny.gov) or by mail to Michelle Phillips, Secretary, NYS Public Service Commission, 3 Empire State Plaza, Albany, NY 12223, within 21 days of this notice. All comments should reference Case Number 10-T-0139.

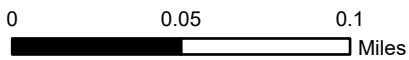
Yours truly,

Josh Bagnato  
Senior Vice President, Development



**Legend**

-  Previously Approved Route
-  Proposed Route Revision



# Champlain Hudson Power Express Change Notice Exhibit

Service Layer Credits: Esri, NASA, NGA, USGS, FEMA, Esri Community Maps Contributors, © OpenStreetMap, Microsoft, Esri, TomTom, Garmin, SafeGraph, GeoTechnologies, Inc, METI/NASA, USGS, EPA, NPS, US Census Bureau, USDA, USFWS, Esri, TomTom, Garmin, SafeGraph, GeoTechnologies, Inc, METI/NASA, USGS, EPA, NPS, USDA, USFWS

## **NOTICE OF CHANGE TO ENVIRONMENTAL MANAGEMENT AND CONSTRUCTION PLAN FOR CHAMPLAIN HUDSON POWER EXPRESS**

Please take notice that on or about March 18, 2025, CHPE LLC and CHPE Properties, Inc. (collectively referred to as “CHPE”) will submit a proposed major change to the approved Environmental Management & Construction Plan (“EM&CP”) for Segment 10 of the Champlain Hudson Power Express (“CHPE”) Project. The Segment 10 EM&CP was previously approved by the New York State Public Service Commission (“PSC”) on December 18, 2023. Segment 10 includes installation of approximately 20.9 miles of buried electrical transmission line within railroad and public road rights-of-way (ROWs) beginning in the Town of Bethlehem (Albany County) to the Town of Catskill (Greene County). This proposed change involves route modifications in the Town of New Baltimore, Greene County, to address complicated topography present along the CSX Railroad right-of-way. No additional or new environmental impacts would result from this requested change; however, these route adjustments shift the alignment outside of the previously approved Allowed Deviation Zone and therefore require PSC approval.

The PSC issued a Certificate of Environmental Compatibility and Public Need (“Certificate”) to CHPE on April 18, 2013, to construct and operate the CHPE Project. Pursuant to that Certificate, CHPE is required to circulate notices to certain landowners, utility owners, municipalities and agencies near the proposed Segment’s construction activities when it proposes to make a change to the Facility route approved in an EM&CP. This notice provides a map showing the proposed change and provides links and contact information which stakeholders can use to obtain further information or to submit comments on the proposed change. The EM&CP change must be reviewed and approved by the PSC before construction on the areas subject to this change can begin.

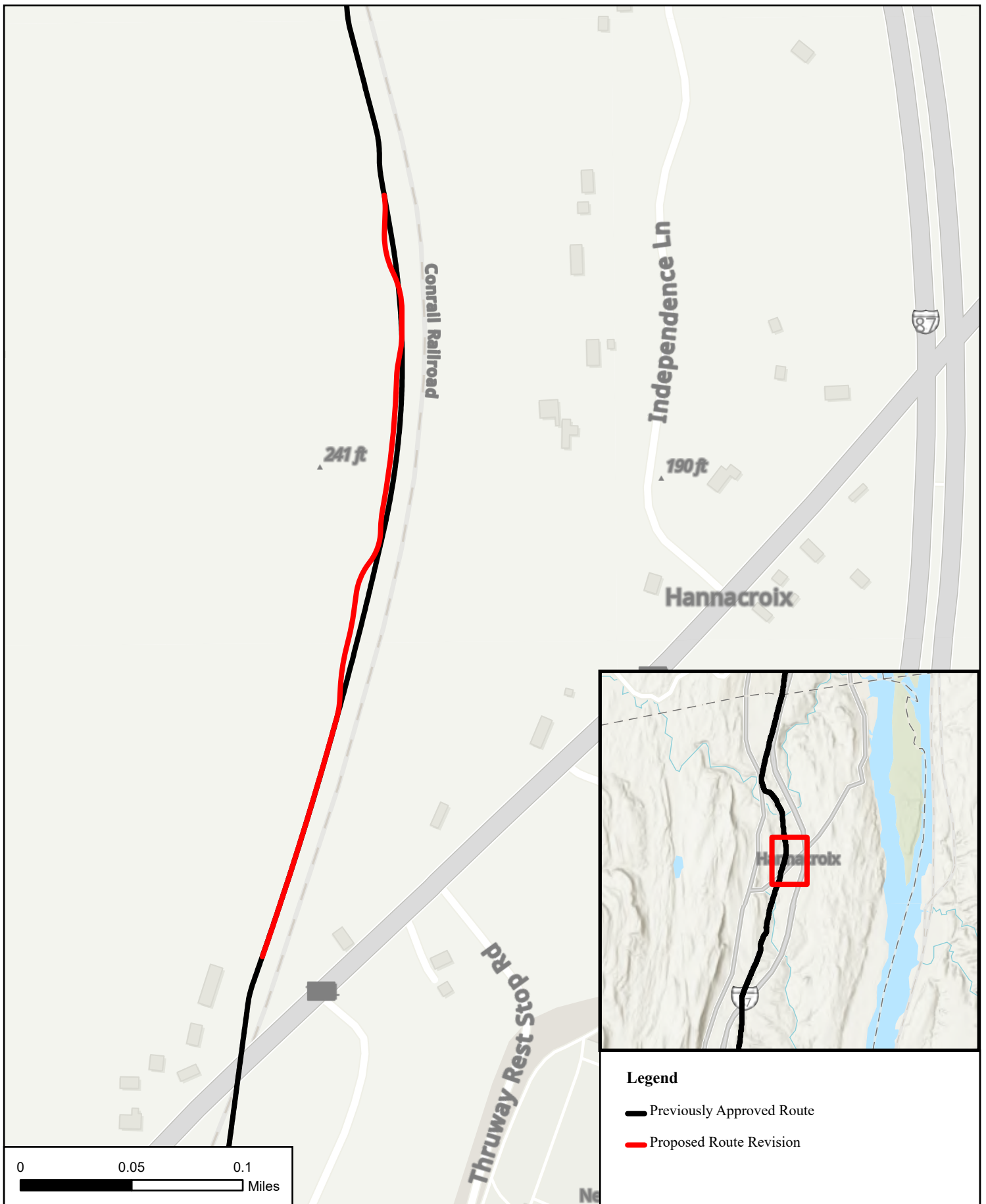
An overview map showing the proposed EM&CP change accompanies this notice. Further details of the planned work locations will be made available on the Project website at: <https://chpexpress.com/overview-of-public-documents/environmental-management-construction-plan/>. Construction activities for this Segment are ongoing. In general, construction within much of Segment 10 will generally occur during daytime hours Monday through Saturday to minimize impacts, though some select activities may occur at night, on Sundays or state or federal holidays where necessary for safety, continuous operation requirements or for other limited circumstances.

The full Commission docket for the Project can be accessed via the Commission’s website at: <http://documents.dps.ny.gov/public/MatterManagement/CaseMaster.aspx?MatterCaseNo=10-T-0139> and electronic copies of EM&CP change documents are available on the Project website at <https://chpexpress.com/overview-of-public-documents/environmental-management-construction-plan/>. Paper copies of the EM&CP are available for viewing at the following local document repositories: Bethlehem Public Library, 451 Delaware Ave., Delmar, NY 12054; RCS Community Library, 95 Main St., Ravena, NY 12143; Heermance Memorial Library, 1 Ely St., Coxsackie, NY 12051.



Comments related to this proposed EM&CP change should be submitted to the Commission Secretary by email at [secretary@dps.ny.gov](mailto:secretary@dps.ny.gov) or by mail to Michelle Phillips,

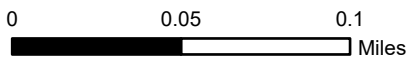
Secretary, NYS Public Service Commission, 3 Empire State Plaza, Albany, NY, 12223, within 21 days of this notice. All comments should reference Case Number 10-T-0139.

CHPE has established a toll-free number for questions regarding the Project: 1-800-991-CHPE (2473). Questions or requests for further information can be directed to: [publicoutreach@chpexpress.com](mailto:publicoutreach@chpexpress.com).



**Legend**

-  Previously Approved Route
-  Proposed Route Revision



# Champlain Hudson Power Express Change Notice Exhibit

Service Layer Credits: Esri, NASA, NGA, USGS, FEMA, Esri Community Maps Contributors, © OpenStreetMap, Microsoft, Esri, TomTom, Garmin, SafeGraph, GeoTechnologies, Inc, METI/NASA, USGS, EPA, NPS, US Census Bureau, USDA, USFWS, Esri, TomTom, Garmin, SafeGraph, GeoTechnologies, Inc, METI/NASA, USGS, EPA, NPS, USDA, USFWS