

APPENDIX B
CASE 10-T-0189
EM&CP SUPPLEMENT FILING NOTICES

**NOTICE OF PETITION TO AMEND CERTIFICATE OF
ENVIRONMENTAL COMPATIBILITY AND PUBLIC NEED FOR CHAMPLAIN HUDSON
POWER EXPRESS**

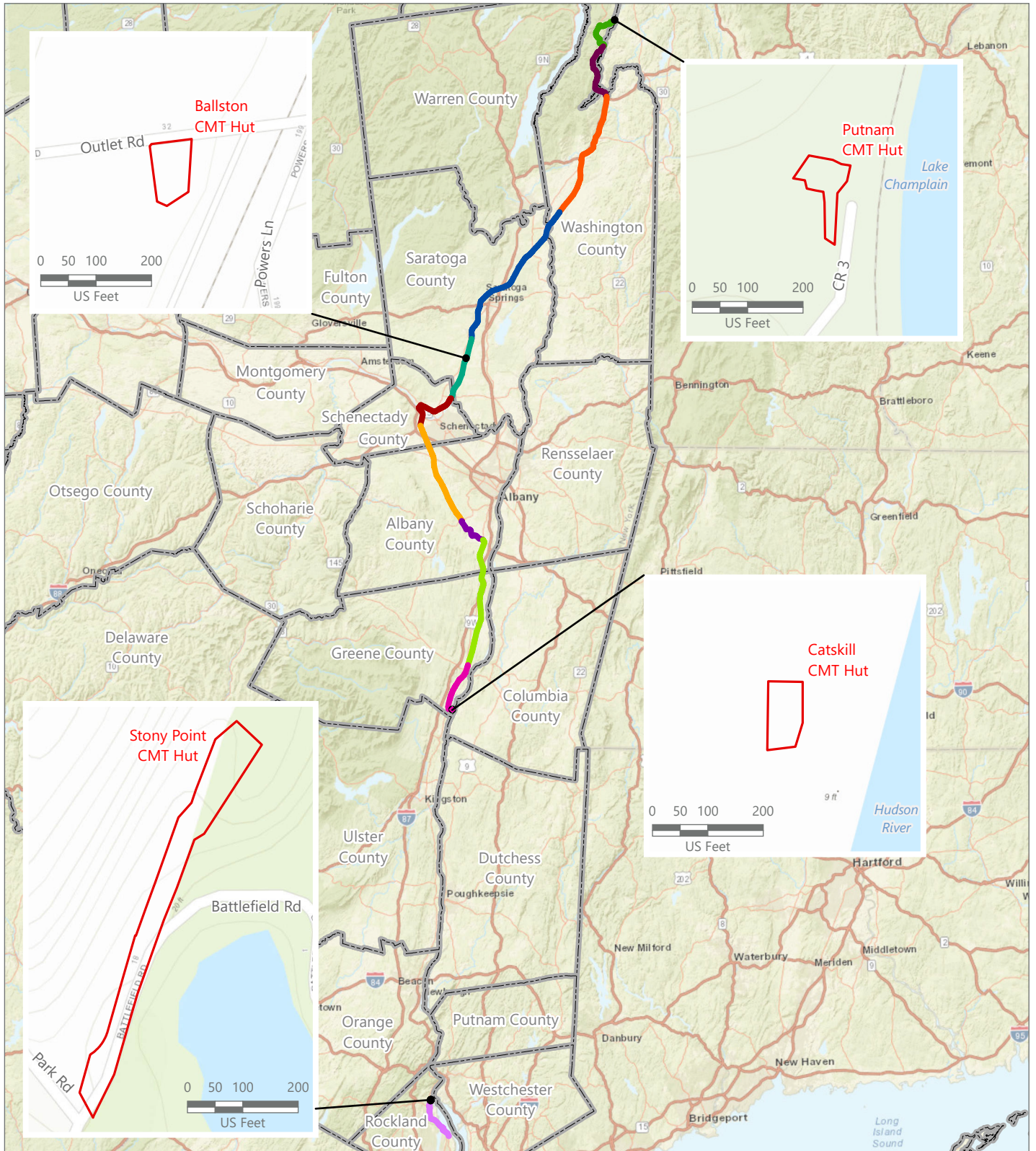
Please take notice that, on or about January 14, 2025, the Champlain Hudson Power Express (CHPE) project will submit a petition to amend its Certificate of Environmental Compatibility and Public Need (Certificate), issued by the NYS Public Service Commission (Commission) on April 18, 2013 pursuant to Article VII of the Public Service Law (PSL), to construct and operate an electric transmission project known as the Champlain Hudson Power Express Project.

The Petition to Amend the Certificate seeks to add four permanent above-ground Cable Monitoring Telecommunication Huts (“CMT Huts”), which consist of prefabricated structures to be placed on lands within the CHPE Project area in the Towns of Putnam (Washington County), Ballston (Saratoga County), Catskill (Greene County), and Stony Point (Rockland County). The CMT Huts will be used for the operation of the CHPE Project. Given that these above-ground features were not previously assessed during the PSC’s prior review and approval of the CHPE Project, CHPE is submitting plans, drawings and impact assessments necessary to amend the Article VII Certificate to authorize these permanent structures, as well as Environmental Management and Construction Plan (EM&CP) details on construction activities, temporary workspaces and installation processes for the CMT Huts.

A map showing the locations of the proposed CMT Huts is included with this notice. The full Commission docket for the Project, including the text of the Petition to Amend, can be accessed via the Commission’s website at: <http://documents.dps.ny.gov/public/MatterManagement/CaseMaster.aspx?MatterCaseNo=10-T-0139> or on the dedicated project website at: <https://chpexpress.com/overview-of-public-documents/environmental-management-construction-plan/>. Paper copies of the EM&CP Supplement submission will be available for viewing at the following local document repositories: Whitehall Free Library, 12 Williams Street, Whitehall, NY 12887; Ballston Spa Library, 21 Milton Ave, Ballston Spa, NY 12020; Catskill Public Library, 1 Franklin St., Catskill, NY 12414; and Rose Memorial Library, 79 East Main St., Stony Point, NY 10980.

Comments on the Petition may be submitted to Michelle Phillips, Secretary to the Commission, by email at secretary@dps.ny.gov or by mail to Michelle Phillips, Secretary, NYS Public Service Commission, 3 Empire State Plaza, Albany, NY, 12223. All comments should reference Case Number 10-T-0139.

Figure 1. CMT Huts EM&CP Supplement



CHPE EM&CP

Saratoga, Washington, Greene
and Rockland Counties, New York

CMT Huts EM&CP Supplement

- | | |
|--|--|
| CMT Hut Work Area | — Segment 7 |
| CHPE EM&CP Filing Package | — Segment 8 |
| — Segment 1 | — Segment 9 |
| — Segment 2 | — Segment 10 |
| — Segment 3 | — Segment 11 |
| — Segment 4 & 5 | — Segment 12 |
| — Segment 6 | |



0 5 10 20
Miles

Prepared December 17, 2024
Basemap: Esri "World Street Map" map service;
Esri "World Topo" map service

Notice of Petition to Amend Certificate of Environmental Compatibility and Public Need for Champlain Hudson Power Express Project

Dear Stakeholder,

Please take notice that, on or about January 14, 2025, Champlain Hudson Power Express (“CHPE”) intends to file a Petition with the Commission to Amend its Article VII Certificate of Environmental Compatibility and Public Need (“Certificate”) to add four permanent above-ground Cable Monitoring Telecommunication Huts (“CMT Huts”), which consist of prefabricated structures to be placed on lands within the CHPE Project area in the Towns of Putnam (Washington County), Ballston (Saratoga County), Catskill (Greene County), and Stony Point (Rockland County).

The NYS Public Service Commission (Commission) issued an Article VII Certificate on April 18, 2013 authorizing CHPE to construct and operate the CHPE Facility, a 339-mile high voltage direct current electric transmission Facility running from the US/Canada border to Queens, New York. The CMT Huts, which are permanent above-ground features needed for operation of the Facility, were not previously assessed during the PSC’s prior review and approval of the CHPE Project. For that reason, CHPE is submitting plans, drawings and impact assessments necessary to amend the Article VII Certificate to authorize installation of these permanent structures, as well as Environmental Management and Construction Plan (EM&CP) details on construction activities, temporary workspaces and installation processes for the CMT Huts.

The full Commission docket for the Project, including the text of the Petition, can be accessed via the Commission’s website at: <http://documents.dps.ny.gov/public/MatterManagement/CaseMaster.aspx?MatterCaseNo=10-T-0139>. A map showing the proposed CMT Hut locations is attached hereto.

Contact Information and Document Repositories

CHPE has established a toll-free number for questions regarding the Project: 1-800-991-CHPE (2473). Questions or requests for further information can be directed to publicoutreach@chpexpress.com.

The Petition to Amend and CMT Hut EM&CP documents will be available on the PSC’s website at <http://documents.dps.ny.gov/public/MatterManagement/CaseMaster.aspx?MatterCaseNo=10-T-0139> and on the Project website <https://chpexpress.com/overview-of-public-documents/environmental-management-construction-plan/> once they are filed.

Paper copies of the Petition to Amend and EM&CP submissions will be available for viewing at the following local document repositories: Whitehall Free Library, 12 Williams Street, Whitehall, NY 12887; Ballston Spa Library, 21 Milton Ave, Ballston Spa, NY 12020; Catskill



623 Fifth Avenue, 20th Floor
New York, New York 10022

Public Library, 1 Franklin St., Catskill, NY 12414; and Rose Memorial Library, 79 East Main St., Stony Point, NY 10980.

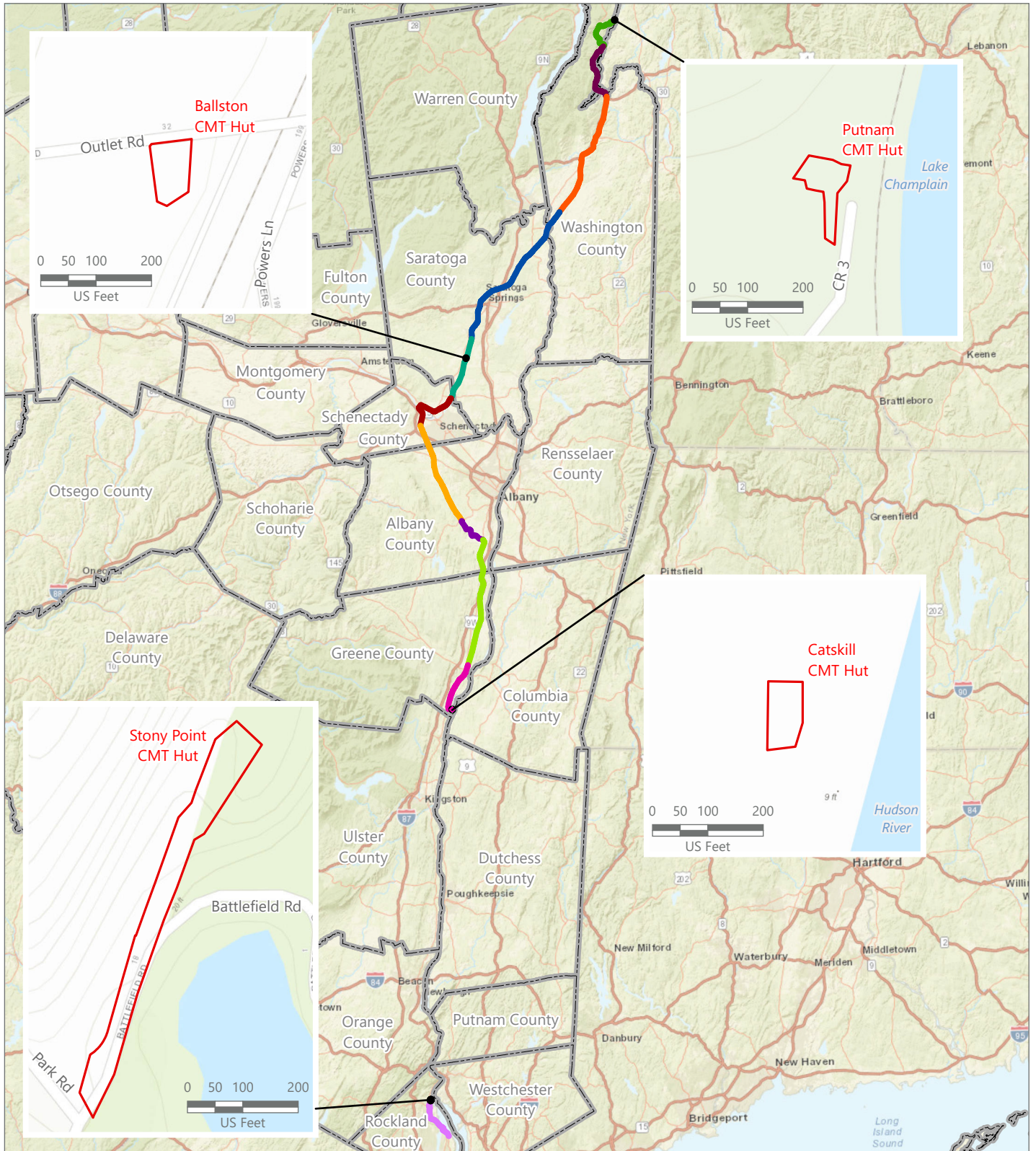
Filing Comments

Any person wishing to be heard by the Commission on any matter related to the proposed Petition to Amend and related CMT Hut EM&CP may file written comments with the Commission Secretary by email at secretary@dps.ny.gov or by mail to Michelle Phillips, Secretary, NYS Public Service Commission, 3 Empire State Plaza, Albany, NY, 12223, within 30 days of the EM&CP segment's filing with the Commission. All comments should reference Case Number 10-T-0139.

Yours truly,

Josh Bagnato
Vice President, Development

Figure 1. CMT Huts EM&CP Supplement



CHPE EM&CP

Saratoga, Washington, Greene
and Rockland Counties, New York

CMT Huts EM&CP Supplement

- | | |
|--|--|
| CMT Hut Work Area | — Segment 7 |
| CHPE EM&CP Filing Package | — Segment 8 |
| — Segment 1 | — Segment 9 |
| — Segment 2 | — Segment 10 |
| — Segment 3 | — Segment 11 |
| — Segment 4 & 5 | — Segment 12 |
| — Segment 6 | |



0 5 10 20
Miles

Prepared December 17, 2024
Basemap: Esri "World Street Map" map service;
Esri "World Topo" map service

Figure 2. Hut Locations

Ballston CMT Hut



CHPE ESDC

Saratoga, Washington, Greene
and Rockland Counties, New York

**Cable Monitoring and Telecommunications
Hut Amendment**

 CMT Hut Limit of Work



0 50 100 200
US Feet

Figure 2. Hut Locations

Catskill CMT Hut



CHPE ESDC

Saratoga, Washington, Greene
and Rockland Counties, New York

**Cable Monitoring and Telecommunications
Hut Amendment**

 CMT Hut Limit of Work



0 50 100 200
US Feet

Figure 2. Hut Locations


Putnam CMT Hut



CHPE ESDC

Saratoga, Washington, Greene
and Rockland Counties, New York

**Cable Monitoring and Telecommunications
Hut Amendment**

 CMT Hut Limit of Work



0 50 100 200
US Feet

Figure 2. Hut Locations

Stony Point CMT Hut




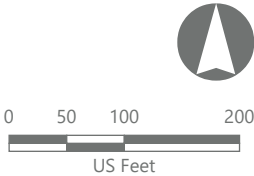
CHPE ESDC

Saratoga, Washington, Greene
and Rockland Counties, New York

**Cable Monitoring and Telecommunications
Hut Amendment**

EDR

 CMT Hut Limit of Work



Prepared September 23, 2024
Basemap: USDA NAIP "2022 New York
60cm" orthoimagery map service