

CASE 10-T-0139
COMPLIANCE ASSURANCE PLAN
SEGMENT 21
ASTORIA ANNEX INTERCONNECTION AND
OVERHEAD AC INTERCONNECTION

**CASE 10-T-0139
COMPLIANCE ASSURANCE PLAN**

TABLE OF CONTENTS

1.0	INTRODUCTION.....	1
1.1	Activities Covered in EM&CP Segment 21	1
2.0	INSPECTORS CONTACT INFORMATION	3
3.0	QUALITY CONTROL INSPECTIONS.....	3
3.1	Quality Control Inspection Schedule	4
3.2	Reporting & Documentation	4
3.2.1	Purchasing Quality Control Audits	5
3.2.2	Construction Quality Control Audits	5
3.2.3	Compliance Inspections	6
3.2.4	Astoria Annex	7
4.0	ENVIRONMENTAL AUDITS	7
4.1	Environmental Audit Schedule	8
4.2	Reporting and Documentation.....	8
5.0	POST INSTALLATION INSPECTION PLAN.....	8
5.1	Astoria Annex and Overhead Cable Location.....	8
5.2	Damage to Infrastructure	9
5.3	Schedule	9
5.4	Maintenance and Emergency Action Plan	9
5.4.1	Maintenance	10
5.4.1.1	Access Control and Facility Security	10
5.4.2	Emergency	10
5.4.2.1	Notifications	10
5.5	EROSION CONTROL AND DRAINAGE	11

LIST OF TABLES

Table 1	Contact Information	3
---------	---------------------	---

LIST OF FIGURES

Figure 1-1	Overview Map	2
------------	--------------	---

LIST OF APPENDICIES

Appendix A	Resumes of Inspectors	
------------	-----------------------	--

1.0 INTRODUCTION

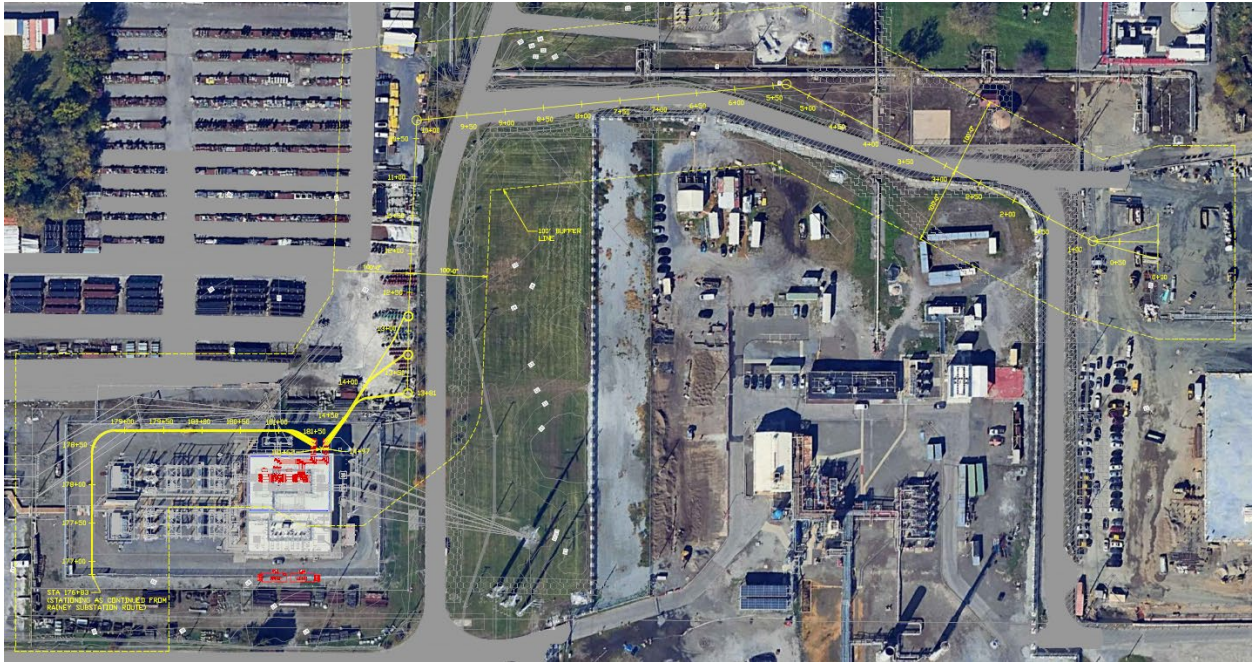
As specified in Certificate Condition 160, the Certificate Holders have developed this Compliance Assurance Plan so that quality standards are followed, and environmental compliance is maintained. The Certificate Holders will implement this Compliance Assurance Plan to confirm that the Project components and tasks conform to the Certificate issued by the Public Service Commission on April 18, 2013 (as amended), and the technical specifications of the Plan & Profile Drawings as well as the procedures outlined in the sections of the EM&CP. Specifically, this Compliance Assurance Plan addresses the work associated with Astoria Annex Interconnection and Overhead Alternating Current Interconnection (Astoria Annex), EM&CP Segment 21.

1.1 Activities Covered in EM&CP Segment 21

The EM&CP for Segment 21 has been developed to facilitate construction, operation and maintenance of an Overhead Transmission Line and the Astoria Annex substation located in Astoria, Queens, New York. The overhead HVAC Transmission Line will connect the output of the Astoria HVDC Converter Station to the existing Astoria Annex Gas Insulated Switchgear (GIS) Substation which is about one-half mile from the converter station. The modifications to the Astoria Annex substation will expand the existing four breaker GIS ring bus to a six breaker ring bus to accommodate the connection of the converter station and the Astoria Rainey Cable project.

The construction of the 1,378 linear-foot Overhead Transmission Line and Astoria Annex modifications will take place on a 9.4-acre parcel at the Con Edison Astoria Generating Complex property at 31-45 20th Avenue, Astoria, Queens NY, 11105 (See Figure 1-1).

Figure 1-1. Overview Map



The Overhead Transmission Line will consist of the following:

Transmission Line

- Six Monopole Structures,
 - The underground/overhead takeoff (Riser) will be a 3-pole structure
- Two 345 kV 795 kcmil OH conductors per phase, and
- 200 linear feet of underground duct bank

The Astoria Annex modifications will take place within the existing fence line for the substation and will consist of modifications inside the building to expand the GIS ring bus and modifications outside the building for the connection to the overhead transmission line, connection to the Astoria Rainey Cable, and construction of a prefabricated building to house new relay panels.

The Overhead HVAC Transmission Line shown in Figure 1-1 will connect the output of the Astoria Converter Station to the existing NYPA owned ConEd operated Astoria Annex GIS Substation which is about one-half mile from the converter station. The Transmission Line will be a single circuit 345kV HVAC Transmission Line (T-line) connecting the Astoria converter station to the Astoria Annex GIS building.

2.0 INSPECTORS CONTACT INFORMATION

Appendix A of this Compliance Assurance Plan includes the resumes for the various field inspectors. Contact leads contact information is summarized in Table 1 below. For those positions not yet filled, names, contact information, and qualifications will be provided to DPS Staff for review two (2) weeks prior to the start of construction.

Table 1 Contact Information

Inspector Type	Contact Name(s)	Contact Information
Safety Inspector	Tom Cerbarano	Tom.cerbarano@tdi-usa.com 229-224-8261
Quality Assurance Inspector	Joe Fonzi Fernando Gonzales	j.fonzi@wsp.com 716-207-3291 fernando.gonzales@wsp.com 201-951-3649
Construction Inspector	Joe Fonzi Fernando Gonzales	j.fonzi@wsp.com 716-207-3291 fernando.gonzales@wsp.com 201-951-3649
Environmental Inspector	Fern Hoffman Willie Keeney	Fern.Hoffman@wsp.com 714-470-4875 wkeeney@diehluxllc.com 507-637-7499

In the event that two or more major construction operations are undertaken simultaneously in areas separated by ordinary highway driving of more than three (3) hours, the Certificate Holders will ensure that at least one inspector of each type shall be assigned to each construction area as needed. The inspector(s) may perform multiple roles if each is qualified to do them. The Certificate Holders have a broad bench of inspectors, however, if needed, they will hire additional qualified inspectors to fulfil duties in different areas.

3.0 QUALITY CONTROL INSPECTIONS

The Quality Assurance Inspector will perform the Quality Control Audits on behalf of the Certificate Holders. The Quality Assurance Inspector will have the qualifications and responsibilities specified in Certificate Condition 53(a).

The Quality Control Inspections will include the following components:

1. Purchasing Quality Control Inspections, which will confirm that the Project materials, structures, equipment, and components purchased conform to the technical specifications

identified in the Plan & Profile Drawings; as well as the procedures and specifications described in the EM&CP.

2. Construction Quality Inspections, which will document that the Project is being constructed in accordance with the design and technical specifications for the Project. The Certificate Holders will notify the DPS Staff representative of when the field reviews will occur.
3. Compliance Inspections, which will document that the Certificate Holders are in compliance with the Article VII Certificate and the requirements of the Certificate Conditions.

3.1 Quality Control Inspection Schedule

Quality Control Inspections will be completed at least monthly during the pre-construction and construction phases. The Inspections will also be performed annually during the first two years of the post construction phase.

3.2 Reporting & Documentation

After each Quality Control Inspection, the Quality Assurance Inspector will alert the Certificate Holders of areas of non-conformance with the construction plans or non-compliance associated with the Certificate Conditions that were observed during the Inspection. If areas of non-conformance require immediate attention, such as those that impact the safety of Project personnel, work will be halted immediately, and the Quality Assurance Inspector will alert the person supervising the construction and the Certificate Holders immediately. The Certificate Holders will collaborate with their team to determine the most appropriate course of action within the requirements of Certificate Conditions and the standard of care for the industry and then perform the actions necessary to resolve the issue as quickly as possible. If immediate actions are not required, the Certificate Holders will prepare a report that documents the corrective and preventative actions to address the issues observed by the Quality Assurance Inspector. This report will be completed in a prompt manner consistent with the issues it is addressing and filed with the Certificate Holders and DPS Staff if applicable.

For issues brought to the attention of the Quality Assurance Inspector or the Certificate Holders by CI owners whose property has been damaged in a material way as a result of the construction, the Certificate Holders will prepare a similar report with the guidance of the Quality Assurance Inspector, applicable utility owners, and agencies as needed. This report will document the corrective and preventative actions to address damages that have occurred or have the potential to occur. This report will be completed in a prompt manner consistent with the issues it is addressing and filed with the Certificate Holders and DPS Staff if applicable.

3.2.1 Purchasing Quality Control Audits

Within five (5) business days following completion of each Purchasing Quality Control Audit, the Certificate Holders will provide to the DPS Staff Representative a report of such audit that includes: (i) a description of the results of the audit, particularly with respect to results that identify that one or more structures or components the Certificate Holders purchased for installation in the Project did not conform to the specification for structures or components described in the approved EM&CP; and, (ii) notes pertinent to the subject matter of such audit which were made at audit meetings by the Certificate Holders' personnel and contractors who performed the audit.

If a Purchasing Quality Control Audit conducted by the Certificate Holders confirms that one or more structures or components the Certificate Holders purchased for installation in the Project did not conform to the specification for structures and components described in the approved EM&CP, the Certificate Holders will: (i) provide written notification to the Secretary within 24 hours of the Certificate Holder's confirmation of such non-conformity; and (ii) describe the steps the Certificate Holders will take to correct the non-conformity, including whether the components must be dismantled and sent back to the manufacturer, as well as a detailed estimate of costs and expected delays in construction resulting from such non-conformity.

3.2.2 Construction Quality Control Audits

After reviewing the active construction work areas, purchased construction equipment and materials, and design plans, the Construction Inspector, with the help of other Inspectors as applicable, will prepare a written report of the findings on whether the Project is being constructed in accordance with the design for the Project. This construction quality control audit may also involve discussions and meetings with the design engineer, construction contractor, and construction personnel as needed. This written report will be generated every month during construction of the Project and submitted to the Certificate Holders. The Certificate Holders will provide a copy of each such report to the DPS Staff Representative within three (3) business days after the report is generated.

If materials, structures, or components are installed that do not conform to those specified in the EM&CP, the Certificate Holders will, within one (1) month after becoming aware of such incident, prepare and deliver to the DPS Staff Representative a summary report detailing the incident, the steps to be taken to rectify the non-conformance, the material and labor costs associated with addressing the issue, and the manner in which such costs will be accounted for separately from the Certificate Holder's other Project costs.

3.2.3 Compliance Inspections

Compliance inspections and oversight will be conducted daily by the designated compliance Inspector(s) for all construction activities. The duration of inspections and oversight of the compliance Inspectors will be dependent on activity type, location, or otherwise required by Certificate Condition(s). The Certificate Holders will provide DPS Staff with a weekly schedule of the Environmental Inspector(s) and the Construction Inspector(s) and their cell phone numbers. The Environmental Inspector(s) and Construction Inspector(s) will be properly equipped to effectively monitor each Contractors' compliance with the provisions of the Certificate and applicable sections of the Public Service Law ("PSL"), New York State Environmental Conservation Law ("ECL"), the Water Quality Certification ("WQC") issued in connection with the Facility pursuant to Section 401 of the Federal Clean Water Act and the approved EM&CP for each segment of the Project. Neither an Agricultural nor Aquatic Inspector will be required for the Astoria Annex/Segment 21 construction as there are no agricultural lands or water bodies within Segment 21.

These Compliance inspections will be recorded daily using standardized forms (Daily Reports) for each type of compliance inspection. These forms will include components of the work matters to inspect for compliance, specific items and locations inspected will be recorded along with the inspection method employed and acceptability criteria. During the work, if an Inspector identifies an item of noncompliance with construction plans or with the Certificate Conditions, the Inspector will alert the person supervising the construction where the noncompliance was observed immediately so that they can take appropriate corrective action. The Inspector will document noncompliance matters and their corrective action in the Daily Report which will be provided to Certificate Holders within a centralized data sharing platform.

The Certificate Holders will promptly notify DPS Staff and NYSDEC if a New York State listed species of special concern is observed to be present in the Facility area (Certificate Condition 51(a)).

The Certificate Holders will promptly notify DPS Staff, NYSDEC and the United States Fish and Wildlife Service ("USFWS") or National Oceanic and Atmospheric Administration Fisheries Service ("NOAA Fisheries") (if applicable) if threatened or endangered wildlife species under 6 N.Y.C.R.R. Part 182 ("TE species") or rare, threatened or endangered plant species under 6 N.Y.C.R.R. Part 193 ("RTE plants") are observed to be present in the Facility area so as to determine the appropriate measures to be taken to avoid or minimize impacts to such species. If necessary to avoid or minimize impacts to such species or as directed by DPS Staff, the Certificate Holders will stabilize the Project area and cease construction in the immediate area of the

threatened or endangered species until DPS Staff have determined that appropriate protective measures have been implemented (Certificate Condition 52).

3.2.4 Astoria Annex

Prior to the commencement of construction of the Astoria Annex, as shown in this EM&CP, the Certificate Holders will first obtain review and written certification by the CNY Department of Buildings that the construction plans for the Converter Station are in compliance with the New York City Electrical Code (“NYCEC”), the New York City Fire Code (“NYCFC”), and Title 28 of the New York City Administrative Code, including the New York City Construction Codes (“NYCCC”). Within ten (10) days of receiving any written certification, the Certificate Holders will file a copy of such certification with the Secretary and will serve a copy on the Director of the Office of Energy Efficiency and the Environment (Certificate Condition 85).

During construction of the Astoria Annex and related buildings, the Certificate Holders will obtain periodic inspections of the construction work by the CNY Department of Buildings for compliance with the NYCFC, NYCEC and NYCCC (Certificate Condition 86).

Prior to the use or occupancy of the Converter Station and related buildings, the Certificate Holders will first obtain written certification by the CNY Department of Building that the construction was completed in compliance with the NYCFC, NYCEC, and the NYCCC. Within ten (10) days of receiving any written certification, the Certificate Holders will file a copy of such certification with the Secretary and will serve a copy on the Director of the Office of Energy Efficiency and the Environment (Certificate Condition 87).

4.0 ENVIRONMENTAL AUDITS

Environmental audits will be conducted during the construction phase of the Project. These environmental audits will be performed by the Environmental Inspector with the help of the Quality Assurance Inspector.

4.1 Environmental Audit Schedule

Monthly environmental audits will be conducted during the construction phase of the Project. Additionally, annual environmental audits will be conducted during the first two (2) years of the operation of the Facility (e.g., cables, annex, converter station, etc.) and as part of the overall transmission cable inspection every five (5) years of the operation of the Project. The Certificate Holders will inform DPS Staff, NYSDEC, and affected state and municipal agencies of the schedule for these audits and the submission of their findings at least 30 days prior to the audit. Upon completion of the audits, DPS and DEC will be provided with a written explanation of the problem(s) signed by the independent inspectors and an authorized representative of the Certificate Holders, together with the audit checklists. Further details on the specific checklists to be used for these annual audits will be developed in consultation with the independent inspectors.

4.2 Reporting and Documentation

The environmental audits will address the environmental concerns identified by the Environmental Inspector after consulting with the other Inspectors, Project personnel, and others observing construction of the Project. The Environmental Inspector will prepare a report that documents the concerns or areas of non-compliance identified during the inspection. This report will be signed by the Environmental Inspector and submitted to the Certificate Holders or their authorized representative, DPS Staff and NYSDEC. The Certificate Holders will consult with their team, DPS and NYSDEC to determine the corrective and preventative actions to address the identified non-compliance and then implement such actions.

5.0 POST INSTALLATION INSPECTION PLAN

An immediate post-installation inspection will be performed by the Certificate Holders after each segment is completed with the help of their Inspectors as needed.

5.1 Astoria Annex and Overhead Cable Location

Construction of the Astoria Annex and associated interconnections will be overseen by Certificate Holders' Owner Engineer to verify Good Utility Practices. Damage to pre-existing facility and/or infrastructure as a result of construction, operation, and maintenance is not anticipated as existing Collocated Infrastructure owner requirements in the immediate area will be met prior to and during construction of the Astoria Annex and interconnections.

5.2 Damage to Infrastructure

Working daily during construction with the Quality Assurance Inspector and applicable CI owners, the Certificate Holders will determine if damage has occurred to pre-existing infrastructure as a result of the project. If damage is found, the Certificate Holders will immediately notify the CI owners and operators of the nature of such damage and other known facts relating to the cause the damage. Repairs will be made in accordance with the Certificate, CI owner requirements, and with their direct consultation.

In situations involving imminent risk to health, safety, property, or the environment requiring the Certificate Holders to cross CI to address the emergency, the Certificate Holders will notify the CI owners and operators as soon as possible. Such notice will include instances when transport or travel over or under CI would be subject to special approval by state and/or local authorities due to the size or weight of load(s) transported.

5.3 Schedule

A Post-Installation Inspection will be performed by the Certificate Holders immediately following construction of the Astoria Annex. Areas of concern identified during the Post-Installation Inspection will be addressed as discussed in a Post-Installation Inspection Plan and/or the Facility Operation and Maintenance Plan that will be provided to DPS Staff in accordance with Certificate Condition 161 (a & b). A schedule for periodic verifications, not to exceed three (3) years for the Astoria Annex will be provided in the Facility Operation and Maintenance Plan to problem resolution and control of access to the ROW and facility components.

5.4 Maintenance and Emergency Action Plan

A Maintenance and Emergency Action Plan (the Plan) will be included in the overall Facility Operation and Maintenance Plan to be compiled during construction and prior to operations. This Plan will include processes and actions that meet the requirements of Certificate Condition 162 (b). The following provides an overview of key activities that will be included in the Plan. In general, the Plan will integrate and coordinate maintenance of the Facility with that of adjacent facilities, structures, and property to the extent practicable, in accordance with Certificate Condition 14.

5.4.1 Maintenance

When planning and performing routine maintenance on the Astoria Annex and associated interconnections in the vicinity of CI, the Certificate Holders will conduct such repairs in accordance with protocols agreed to for initial construction. Maintenance of the Annex will be in accordance with the Annex Operation and Maintenance Procedures, to be prepared prior to the modifications becoming operational.

5.4.1.1 Access Control and Facility Security

Access to the Astoria Annex will be monitored by a security system, access control system, CCTV, and 24/7/365 operators. The Annex is constantly monitored by fire protection, security, and a control and protection system that will alert operators of any abnormalities. Dispatch of technicians and/or engineers (O&M team) would take place in the event of an abnormality.

5.4.2 Emergency

In the event of an emergency at the Annex, the procedures outlined in the Facility Operations and Maintenance Plan will be implemented. This plan will be provided prior to the Annex becoming operational. Emergency services (fire, police, ambulance) will be contacted as necessary.

5.4.2.1 Notifications

In the event of an equipment failure during operations, the Certificate Holders will promptly notify appropriate state regulators as follows:

- Within five (5) business days of any failure of equipment causing a reduction of more than ten (10) percent in the capability of the Facility to transmit electric power, the Certificate Holders will promptly provide to DPS Staff, NYPA, and Con Edison copies of all notices, filings, and other substantive written communications with NYISO as to such reduction, any plans for making repairs to remedy the reduction, and a proposed schedule for any such repairs. The Certificate Holders will provide monthly reports to DPS Staff, Con Edison, and NYPA on the progress of any repairs until completed. The report will contain, when available, copies of applicable drawings, descriptions of the equipment involved, a description of the incident, and a discussion of how future occurrences will be avoided. The Certificate Holders will work cooperatively with NYPA, Con Edison, and NYISO to avoid any future occurrences. If such equipment failure is not completely repaired within nine (9) months of its occurrence, the Certificate Holders will provide a detailed report to the

Secretary within nine (9) months and two (2) weeks after the equipment failure, setting forth the progress on the repairs and indicating whether the repairs will be completed within three (3) months. If the repairs will not be completed within three (3) months, the Certificate Holders shall explain the circumstances contributing to the delay and demonstrate why the repairs should continue to proceed (Certificate Condition 126).

- The Certificate Holders will provide the Bulk Electric System Section of DPS with a copy of their emergency procedures and contacts, and an updated copy will be provided with documentation of any modifications (Certificate Condition 136).
- The Certificate Holders will report any theft of materials related to the Facility with a value in excess of ten thousand dollars (\$10,000) to the DPS Representative within one (1) business day of the time when the theft comes to the attention of the Certificate Holders. The Certificate Holders will provide the DPS Representative with a list of the stolen items to the extent known and a copy of any police report (Certificate Condition 137).
- The engineering and design of the project will avoid any Existing Collocated Infrastructure in the immediate area. The Owners of any collocated infrastructure will be notified prior to construction

5.5 EROSION CONTROL AND DRAINAGE

If areas along the Project are identified during the Post Installation Inspection where erosion and sediment controls are needed, additional stabilizing efforts will be performed by the Certificate Holders. These efforts may will follow the erosion control plans described in Appendix I of this EM&CP.

Appendix A
Resumes of Inspectors



Loren Petty

With many years in oil, gas, and utility construction I strive to always better myself by learning new ways to complete projects safer, ahead of schedule and below budget. Having knowledge of all aspects of a project from conception to completion I will be a good addition to your project.

April 1,2024 – Current

Queens New York

Utility, Safety and Environmental Inspector | WSP/ TDI

Inspect crews boring, digging, placing and backfilling transmission power manholes and conduit. Inspect pulling power cable into conduit and tie-ins.

- Ensure crews are following safety protocol
- Read and ensure plans and permits are followed to specifications
- Meet with crews and go over tail gate meetings in the morning.
- File reports for client to verify project dates are being followed.
- Report any accidents or incidents on job site.
- Ensure all material tests are completed properly and work with contractor to meet all requirements.

September 2023- September 2023

Odessa Texas

Chief, Safety Inspector I MBF Inspection/ Phillips 66

Inspect crews preparing existing pipeline for hydro test, complete test and install pipeline back into service.

- Inspect crews to insure professional work
- Verify paperwork and charts were correct
- Prepare and send daily reports to client
- Ensure contractor is following safety protocol
- Watch crews dig and expose live pipelines and install monitoring equipment.

May 2023-August 2023

Hobbs New Mexico

Utility, Safety, Environmental Inspector | BWS Inspection Services/Goodnight Midstream

Inspect crews installing piping on SWD's tanks and pumps, Inspect pipeline crews installing 12" HDPE pipelines / launcher, receivers and meter stations.

- Inspect contract crews to insure professional work
- Verify data logger reports were accurate according to pipe size and DR
- Fill out documentation on torque reports and fusion reports
- Inventory materials to ensure all materials were delivered to job site
- Control T&M projects and watch spending on projects
- File reports for company
- Ensure contractor is following Goodnight safety protocol

January 2014- May 2023

Asherton Texas

Superintendent | Kingsley Constructors, Inc

Supervise and assist in the installation of steel pipeline, flexsteel, fiberspar , flex pipe and HDPE pipelines. Also completed remediation projects along with pipeline repairs and testing to insure pipelines were up to code. Traveled to many project to assist in installation of pipelines and insure they were installed correctly. Remediate pad sights with scraper, dozer and seeder.

- Manage crews and projects in South Texas, West Texas, New Mexico and Alabama
- Schedule equipment deliveries and maintain equipment usage

- Schedule product and material delivery
- Ensure a safe environment
- Ensure all daily job site paperwork is completed
- Coordinate scheduling with customer
- Complete and send daily reports to customers
- Hydrotest and Pig Pipelines
- Locate pipelines

Equipment Operator

Dozer, Trencher, backhoe, excavator, maintainer, loader, skidsteer, Fast Fusion, TracStar Fusion, Pitbull Fusion, Scraper, Fork lift, man lift

HDPE Fuser

- 1"-24" HDPE Fuses including Butt fuses, socket fuses, side wall fuses, electric fuses.

HDPE Trainer

- Trained and certified employees in the fusion process and completion on several size fuse machines.

HDPE Inspector

- Called to other projects to inspect for discrepancies in fuses and or pipe to ensure project will be completed properly.

April 2013- January 2014 **New Braunfels Texas**

Foreman/Crew leader | Lakeshore Toletest

- Hydrotested and pigged steel pipelines in all areas of Texas
- Managed multiple crews digging and installing distribution gas pipe.

Equipment Operator

- Trencher, trackhoe, backhoe

January 2013- April 2013 **Rifle Colorado**

Willowcreek Construction

Clear ROW's for pipelines and maintain roadways for crews to get to projects.
Equipment operator , Excavator, Maintainer, bulldozer

September 1996- January 2013 **Grand Junction Colorado**

Petty Construction

Co-Owner

- Employed and managed employees
- Prepared and submitted bids for all projects
- Ordered construction permits and environmental permits
- Managed daily projects and operations
- Maintained and controlled projects in Colorado, North Dakota, Wyoming, New Mexico, Pennsylvania, Washington, Utah, along with overseas in the Marshall Islands
- Scheduled deliveries
- QAQC
- AP/AR
- Fleet management
- Weld and maintain equipment
- Maintained and directed several directional bore crews and pipeline crews simultaneously

- Hydrotest and pig pipelines

Business devilmnt

- Actively search for new clients and develop healthy relationship with current and future clients

HDPE Fuser

- ¾"-54" HDPE fuses including butt fuses, socket fuses, sidewall fuses, electric fuses

HDPE Trainer

- Trained and certified employees in fusion process and completion on several size fuse machines

Equipment Operator

- Side boom/live sideboom/hydrolic, directional bore machine, dozer, trencher, back hoe, track hoe, ,maintainer, skidsteer, fast fusion, scraper, fork lift, man lift, cable plow, trackstar fusion, pitbull fusion

USS Whidbey Island

August 1994-September 1996

Norfolk Virginia

Welder/pipe fitter

Plumber

Fire fighter

Education/Certifications

Grand Junction High School

USN Welding School

McElroy Fusion School

McElroy Inspector School

Fast Fusion Trainer

Certified HAZWOPER 40

Certified OSHA 10

Certified OSHA 30

Certified CPR and First aid

Supervisor Training

Competent Person Training

Confined Space/General Awareness

H2S

Fire extinguisher and fire safety

Trenching/shoring

Forklift

PEC training



HIGHLIGHTS

Experienced regulatory compliance professional with a proven track record of 15+ years in navigating complex regulations across diverse industries. Proficient in providing practical solutions and services such as compliance management, regulatory analysis, risk assessment, and training. Committed to delivering innovative and cost-effective strategies that exceed regulatory expectations, ensuring successful project completion. Demonstrated expertise in working with a wide range of clients, from large corporations to small businesses, and tailoring solutions to meet their specific needs. Combines technical proficiency with comprehensive regulatory knowledge to provide exceptional client service.

EDUCATION:

B.A. English; Economics / Emory University, Atlanta, GA

CERTIFICATIONS/LICENSES

CPESC (Certified Professional in Erosion, Sediment, and Control), License **9527**
CESSWI (Certified Erosion, Sediment, and Stormwater Inspector), License **3521**
Remote Unmanned Aerial System Pilot; License **3981419**
Construction Project Management/Cost Estimating and Cost Control P259Q32ZCFRW

APPOINTMENTS

Board of Directors, ENVIROCERT INTERNATIONAL

PROFESSIONAL EXPERIENCE

CEO

Boden Consulting Services, LLC

Various Clients

Equitrans Midstream/Bluewave/BP LightSource/Empire Soccer Academy/EQT/Diehlux, LLC

- Environmental Consulting
- Collaborate with clients to identify project roadblocks to ensure that project deliverables are provided under budget while meeting deadlines and project initiatives.
- Provide expert advisory services for environmental and aerial operations.
- Execute environmental and aerial operations for clients.

PRESENT

Environmental Coordinator/Project Specialist [Contract]

McDaniel Technical Services Equitrans Midstream

EQT/Equitrans Midstream

2015 - 2022

- Developed and implemented plans, templates, and punch lists for stormwater and construction reporting.
- Managed over twelve environmental personnel and provided training to new and visiting field personnel (company and contractor)..
- Ensured compliance with client and government regulations by scheduling and performing necessary inspections and reporting.
- Collaborated with Environmental, Engineering, and Construction services to work cross functionally to reach project milestones and provide streamlined solutions to reach project deadlines.
- Developed custom stormwater management plans and coordinated with engineering services to develop site plans and erosion sediment control plans.
- Managed storm water discharge monitoring reporting in compliance with NPDES and state requirements for both analytical and qualitative discharge monitoring.
- Served as a expert witness to resolve contract disputes regarding warranty and construction workmanship. Assisted with cost estimations for repairs and mitigation efforts to resolve project issues.
- Performed and coordinated site-specific inspections on agricultural lands to ensure that best management practices, soil conservation, erosion control, soil stabilization, and revegetation practices were in accordance with USDA-NRCS and local conservation agencies.

**Roving Lead Environmental Inspector
Accent Compliance Columbia/NiSource**

2015

- Ensured rigorous compliance with federal, state, and local regulations, including FERC, USACE, DNR, SHPO, EPA, FWS, and conservation district environmental permits.
- Collaborated seamlessly with environmental authorities across all government levels to guarantee construction practices met compliance standards and Best Management Practices (BMPs)
- Conducted site-specific agricultural inspections to ensure that construction activities complied in accordance with Local, State, and Federal water quality, soil conservation, erosion and sediment control, and applicable permit requirements.
- Performed site specific agricultural inspections to ensure that segregation of soils, decompaction of soils, and seeding procedures met landowner, conservation authorities, or land managing agency procedures.
- Verified that all seed mixtures complied with local conservation agencies and landowner specifications
- Identified and implemented BMPs to ensure optimal soil stabilization and restoration needs were met.
- Evaluated the environmental impact of construction activities, ensuring protection of threatened or endangered species, bird conservation, and prevention of invasive species.
- Conducted inspections of Stormwater Pollution Prevention Plans (SWPPP), ensuring proper stabilization and restoration needs were consistently maintained in accordance with regulations.
- Resolved municipal stipulations, special conditions, and landowner complaints promptly and effectively.
- Verified the legitimacy of landowner claims and complaints to ensure all work on properties was justified.

**Lead Environmental Inspector/Assistant Chief-Inspector/Construction Coordinator
NV5/AK Environmental, LLC
Dominion Energy**

2011 - 2015

- Orchestrated seamless coordination among construction, environmental, and legal services to enforce contractor warranties, ensuring alignment with operator's requirements.
- Ensured rigorous compliance with FERC, USACE, DNR, SHPO, PADEP, EPA, FWS, PFBC, and conservation district environmental permits.
- Collaborated with federal, state, and local environmental officials to ensure construction practices adhered to best management practices and complied with standards and regulations.
- Analyzed alignment sheets, verifying authorized construction work areas, access roads, cultural resources, and federally protected areas as well as determining the location of erosion control devices for effective erosion and sediment control.
- Identified and implemented best management practices (BMPs) to ensure soil stabilization and restoration needs.
- Oversaw pollution prevention practices concerning fuel, solid waste, and hazardous materials.
- Evaluated environmental impacts arising from construction-related activities, guaranteeing protection of threatened or endangered species, bird conservation, and prevention of invasive species.
- Delivered comprehensive training to new field personnel.
- Conducted thorough Stormwater Pollution Prevention Plan (SWPPP) inspections, ensuring proper stabilization and restoration needs were consistently maintained.
- Conducted site-specific agricultural inspections to ensure that construction activities complied in accordance with Local, State, and Federal water quality, soil conservation, erosion and sediment control, and applicable permit requirements.
- Performed site specific agricultural inspections to ensure that segregation of soils, decompaction of soils, and seeding procedures met landowner, conservation authorities, or land managing agency procedures.

**Lead Environmental Inspector
Northern Natural Gas**

2010 - 2011

**FERC Compliance Coordinator
Tetrattech – Rockies Express**

2008- 2009

**Corporate Paralegal
Velocity Sports Performance**

2006-2008

**PROFESSIONAL AFFILIATIONS
ENVIROCERT INTERNATIONAL, Director**

DIEHLUX