



## **Appendix 1-C: Agency and Stakeholder Consultations**

**CONTAINS REDACTED INFORMATION IN CASE 10-T-0139**



404 Wyman Street, Ste. 375  
Waltham, MA 02451

T 781.419.7696  
TRCcompanies.com

November 13, 2023

New York Natural Heritage Program – Information Services  
New York State Department of Environmental Conservation  
625 Broadway, 5th Floor  
Albany, NY 12233-4757

Re: *Champlain Hudson Power Express (CHPE) Project – Hudson River Marine Segment Cable Installation*

*Town of Clermont, Columbia County, NY  
Town of Fishkill, Dutchess County, NY  
Town of Hyde Park, Dutchess County, NY  
Town of Poughkeepsie, Dutchess County, NY  
City of Poughkeepsie, Dutchess County, NY  
Town of Red Hook, Dutchess County, NY  
Town of Rhinebeck, Dutchess County, NY  
Town of Catskill, Greene County, NY  
City of New York, New York County, Bronx County, Kings County, Richmond County, Queens County, NY  
Town of Cornwall, Orange County, NY  
Town of Newburgh, Orange County, NY  
Town of Highlands, Orange County, NY  
Town of Philipstown, Putnam County, NY  
Town of Stony Point, Rockland County, NY  
Town of Clarkstown, Rockland County, NY  
Town of Esopus, Ulster County, NY  
City of Kingston, Ulster County, NY  
Town of Lloyd, Ulster County, NY  
Town of Saugerties, Ulster County, NY  
Town of Ulster, Ulster County, NY  
Town of Greenburgh, Westchester County, NY  
Town of Mount Pleasant, Westchester County, NY  
Town of Ossining, Westchester County, NY  
City of Yonkers, Westchester County, NY*

Dear Sir or Madam,

Champlain Hudson Power Express, LLC (CHPE) is proposing to construct the Champlain Hudson Power Express project (Project), an approximately 330-mile submarine and terrestrial high voltage direct current (HVDC) transmission project that will connect clean power generated in Canada with New York City.

As part of the Project, CHPE is proposing to install transmission cables along the bottom of the Hudson River (Figure 1). The first segment of the submarine cable route, referred to as the Cementon-Stony Point Hudson Marine Segment, is approximately 67.6-miles long and begins in the Hamlet of Cementon, Greene County, New York and ends in the Town of Stony Point, Rockland County, New York. The second segment of the submarine cable route, referred to as the Congers-Harlem Hudson Marine Segment, is approximately 21.7-miles long and begins in the Hamlet of Congers, Rockland County, New York and ends at the mouth of the Harlem River. The cable bundle to be installed will

consist of two 400 kilovolt (kV) direct current (DC) power cables and one fiber optic cable. In areas where required cable burial depths cannot be met, such as at co-located infrastructure (CI) crossings, post-lay concrete mattresses will be installed for remedial cable protection. Where the cables enter/exit the Hudson River at the Cementon, Stony Point, and Congers horizontal directional drill (HDD) locations, they will be encased in pre-installed high-density polyethylene (HDPE) ducts. To facilitate cable installation activities in the Hudson River, pre-existing CHPE laydown areas may be used to temporarily stage equipment on land as needed.

On behalf of CHPE, TRC Companies (TRC) respectfully requests information regarding the occurrence and distribution of state- and federally listed endangered and threatened species and their habitats occurring within or immediately adjacent to the currently proposed cable route in the Hudson River. A shapefile of this study area is attached for review purposes.

The requested information is necessary to comply with the requirements of the New York State Endangered Species Act and its implementing regulations (6 NYCRR Part 182), the Federal Coastal Zone Management Act, the New York State Coastal Zone Management Program, and regulations promulgated under the Waterfront Revitalization and Coastal Resources Act (19 NYCRR Part 600). This information will be used in the preparation of the Environmental Management and Construction Plan (EM&CP) for the Project.

*Please note that CHPE's subcontractor Kiewit has submitted similar requests for terrestrial segments of the Project which do not include the cable installation work described herein. Additionally, please note that TRC has also submitted similar requests for transitional land-to-water HDD Project segments, pre-lay matting work, and cable installation work within Lake Champlain which do not include the cable installation work within the Hudson River described herein. Therefore, this new request is submitted to address this gap.*

Please do not hesitate to contact me at (781) 419-7709 or [KConese@trccompanies.com](mailto:KConese@trccompanies.com) with any questions. Thank you in advance for your assistance.

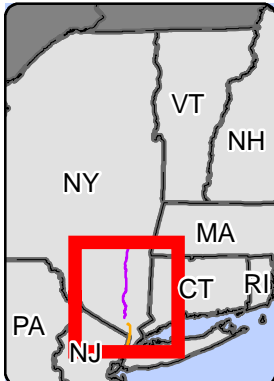
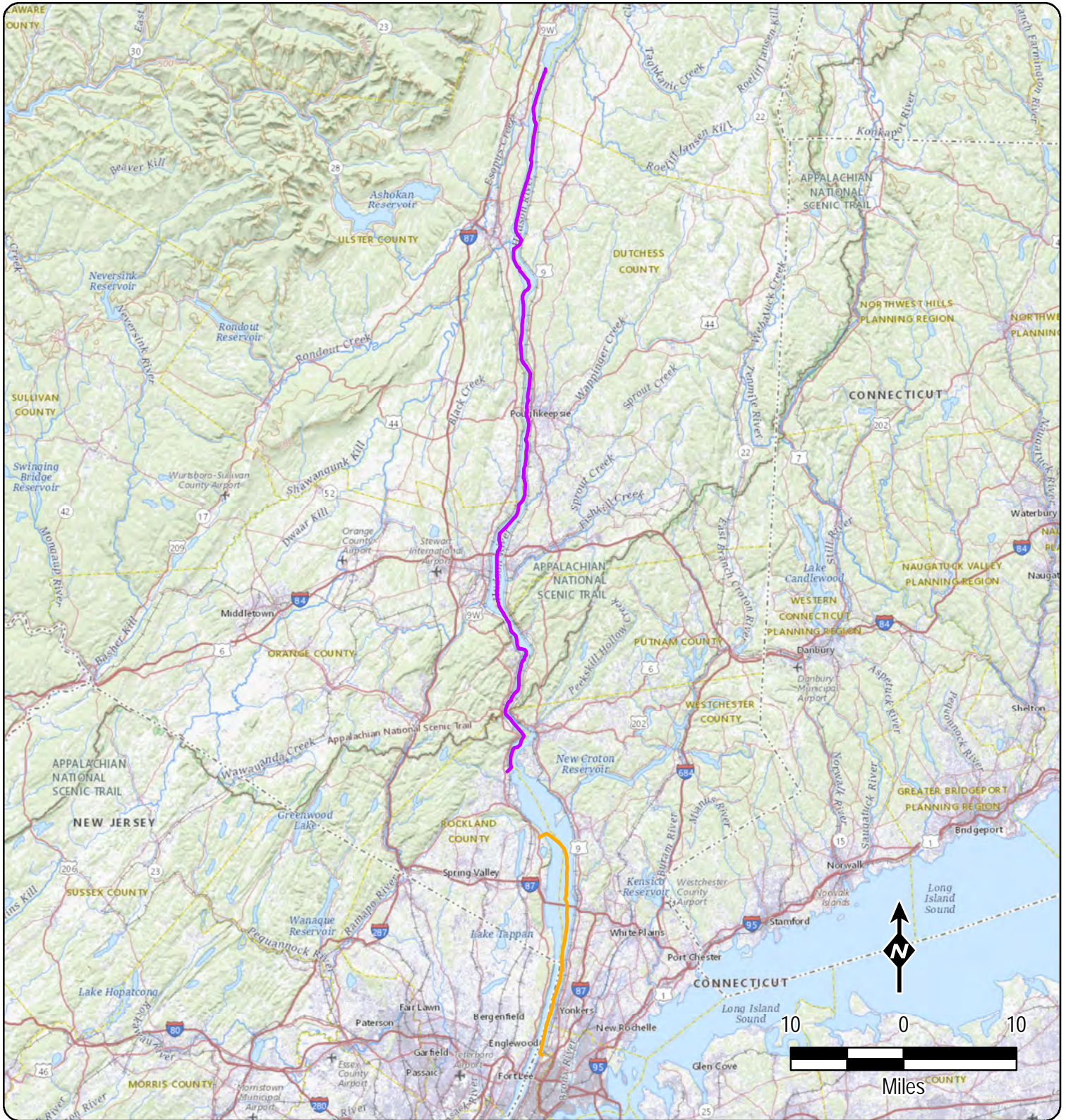
Sincerely,

TRC Companies




Katie Conese  
Environmental Scientist

Attachment 1 – Submarine Cable Route Location Figure



- Cementon-Stony Point Submarine Cable Route (Upper Hudson Marine Segment)
- Congers-Harlem Submarine Cable Route (Lower Hudson Marine Segment)



CHAMPLAIN HUDSON POWER EXPRESS  
Hudson River Marine Segment  
Cable Installation EM&CP  
Figure 1

Created: 11/2/2023

## NEW YORK STATE DEPARTMENT OF ENVIRONMENTAL CONSERVATION

Division of Fish and Wildlife, New York Natural Heritage Program  
625 Broadway, Fifth Floor, Albany, NY 12233-4757  
P: (518) 402-8935 | F: (518) 402-8925  
www.dec.ny.gov

February 13, 2024

Katie Conese  
TRC  
404 Wyman St, Suite 375  
Waltham, MA 02451

Re: Champlain Hudson Power Express (CHPE) Project -- Hudson River Marine Segment  
Cable Installation

County: Columbia, Dutchess, Greene, New York, Orange, Putnam, Westchester

Dear Katie Conese:

In response to your request, we have reviewed the New York Natural Heritage Program database with respect to the above project.

Enclosed are reports, in spreadsheet format, of rare or state-listed animals and plants, significant animal assemblages, and significant natural communities documented in our database along the proposed Hudson River Marine Segment Cable Route of the Champlain Hudson Power Express or in its vicinity.

One sheet includes animals listed by NYS as Endangered, Threatened, or Special Concern. For more information regarding the state-listed animals in the report, including any potential impacts or permit considerations for the project, please consult with the NYSDEC.

Another sheet lists rare and listed plants, significant natural communities, significant animal assemblages, and rare unlisted animals.

For most sites, comprehensive field surveys have not been conducted; the enclosed report only includes records from our database. We cannot provide a definitive statement as to the presence or absence of all rare or state-listed species or significant natural communities. Depending on the nature of the project and the conditions at the project site, further information from on-site surveys or other sources may be required to fully assess impacts on biological resources.

Sincerely,



Nicholas Conrad  
Information Resources Coordinator  
New York Natural Heritage Program

**Rare/listed animals and plants, significant animal assemblages, and significant natural communities documented along the proposed Hudson River Marine Segment Cable Route of the Champlain Hudson Power Express or in its vicinity.**

*First sheet 'Listed Animals'*

This sheet includes **animals listed by New York State** as Endangered, Threatened, or Special Concern, and/or that are federally listed.

For information about any potential impacts or permit considerations for the project, contact the NYSDEC.

*Second sheet 'Plants, Comms, Others'*

This sheet includes animals not listed by NYS, rare plants, significant animal assemblages, and significant natural communities.

**Unlisted animals**, while not listed by New York State as Endangered or Threatened, are of conservation concern to the state, and are considered rare by the New York Natural Heritage Program.

Rare **plants** are listed as Endangered, Threatened or Rare by New York State, and/or are rare and a vulnerable natural resource of conservation concern.

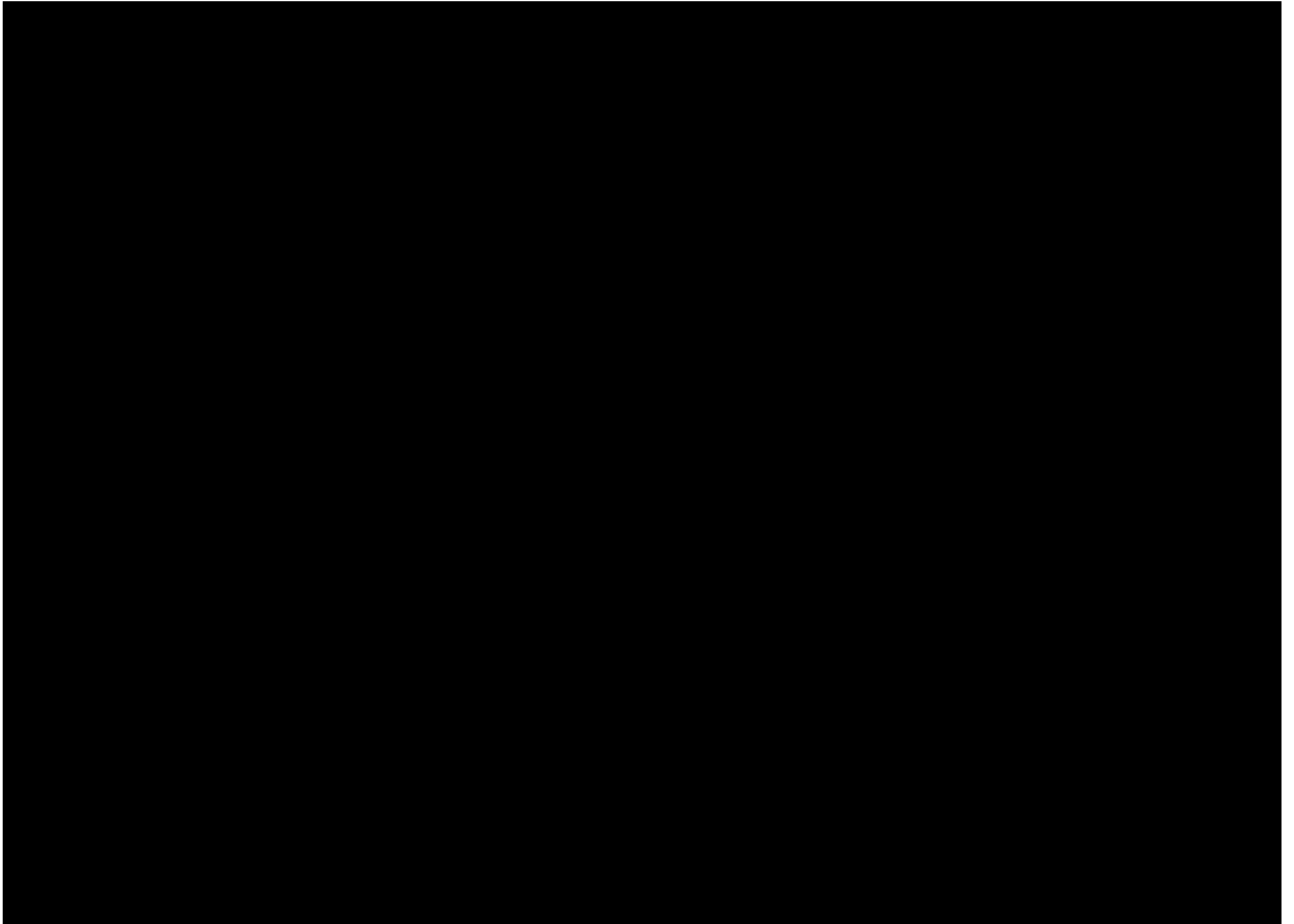
The **animal assemblages** are multi-species concentration areas that have been designated by New York State as significant for the survival of more common species.

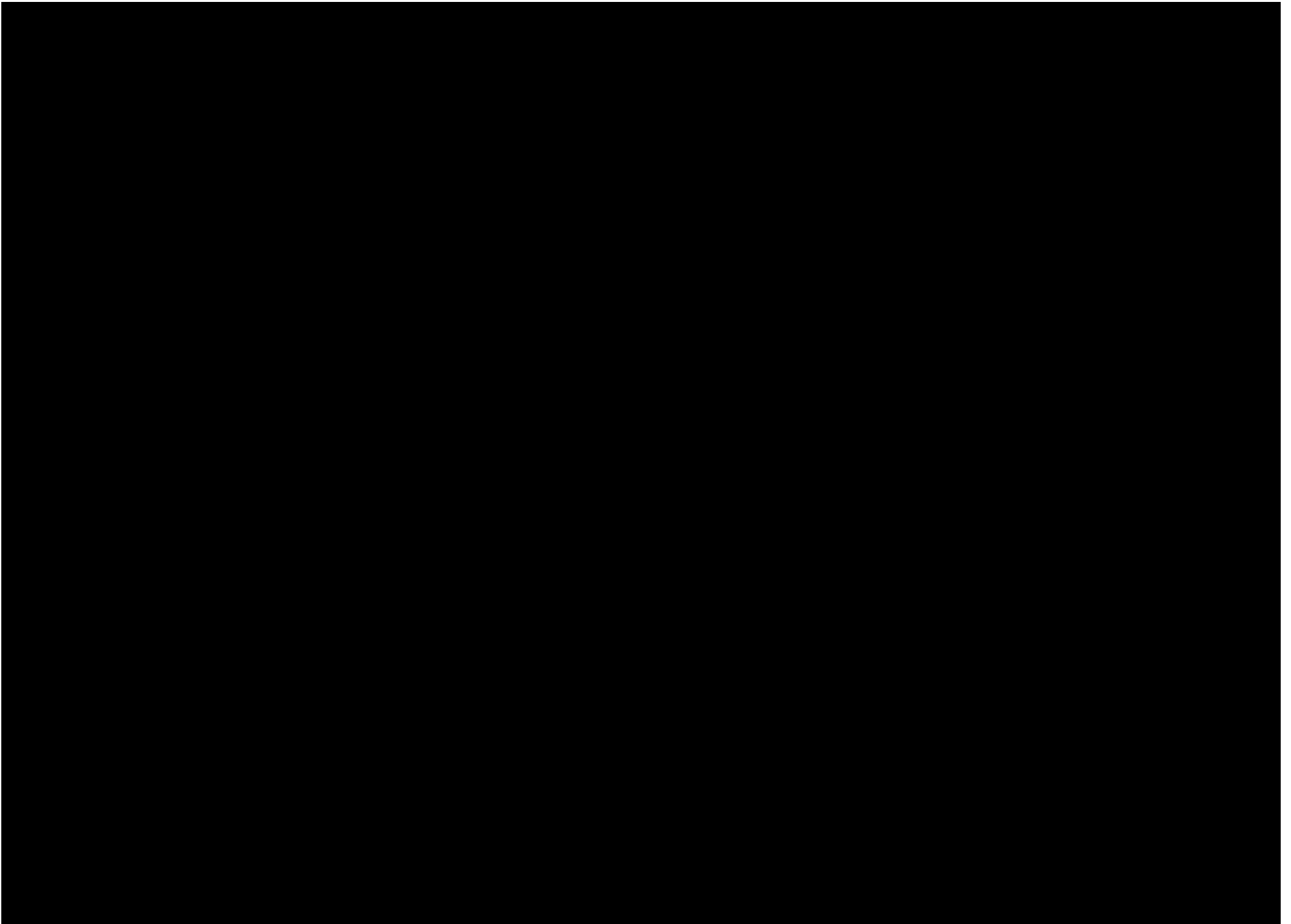
The **natural communities** are considered significant from a statewide perspective by the NY Natural Heritage Program. They are either an occurrence of a community type that is rare in the state, or a high quality example of a more common community type. By meeting specific, documented criteria, the NY Natural Heritage Program considers these community occurrences to have high ecological and conservation value.

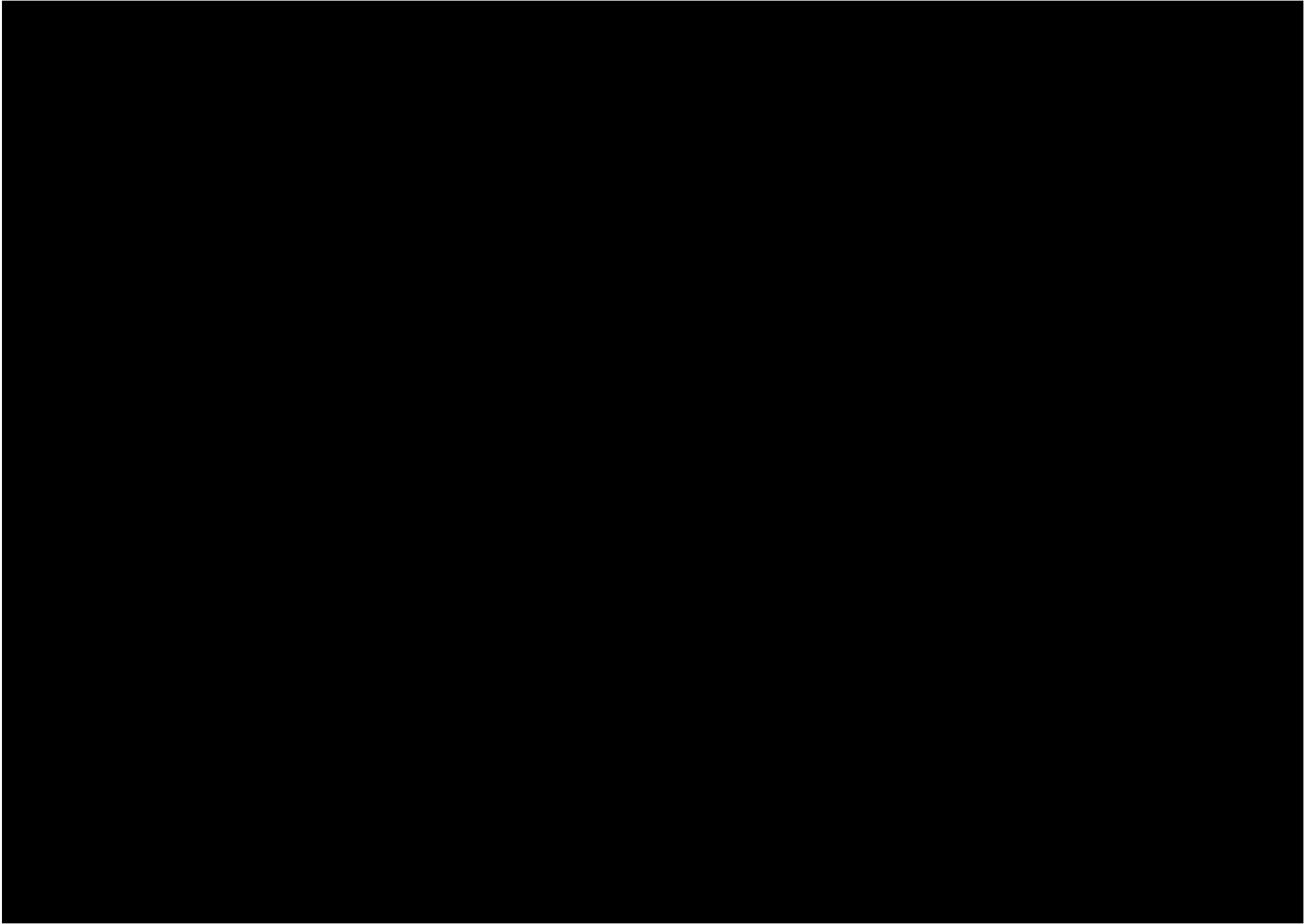
















623 Fifth Avenue, 20th Floor  
New York, New York 10022

October 3, 2023

***RE: Public Water Supply Intake Owner Consultations for the Champlain Hudson Power Express (CHPE) Project***

Dear Public Water Supply (PWS) - Castle Point Medical,

CHPE LLC and CHPE Properties, Inc. (collectively referred to as “CHPE”) are in the process of developing Environmental Management & Construction Plans (“EM&CPs”) for cable installation within the Hudson River for the Champlain Hudson Power Express project (the “Project”). We are sending this letter to update you on the Project and request that we initiate consultation with you to support the development of the cable installation EM&CP.

Work on the Hudson River will be divided between two EM&CP submissions. First, the Segment 19A EM&CP, submitted to the New York State Public Service Commission on August 4, 2023, covers the Hudson River Submarine Utility Protection (Pre-Lay Mattressing) activities, which involve installation of articulated concrete mattresses over Co-located Infrastructure (CI) crossed by the Project in the Hudson River. Under this EM&CP, no articulated concrete mattresses are proposed to be installed on or near your PWS intake structure, nor are any CI crossings requiring such submarine utility protection located within 2000 feet of the NYCDEP Chelsea intake and within 5900 feet of Castle Point intake. Therefore, activities covered in the Segment 19A EM&CP will not impact your infrastructure. However, you are welcome to review a copy of this EM&CP, on the PSC’s website at <http://documents.dps.ny.gov/public/MatterManagement/CaseMaster.aspx?MatterCaseNo=10-T-0139> and on the Project website <https://chpexpress.com/overview-of-public-documents/environmental-management-construction-plan/>.

On or about March 2024, CHPE will file the Segment 19B EM&CP which will outline the installation of the Facility’s cables in the Hudson River. CHPE would like to schedule a meeting in the near future to discuss how we would propose to incorporate this information into the Segment 19B Hudson River Cable Installation EM&CP. Specific topics we would like to consult with you on include:

- PWS plant operations,
- Appropriate notification procedures,
- Service of EM&CP notices and documents,
- Service of construction notices, and
- Schedules and coordination



623 Fifth Avenue, 20th Floor  
New York, New York 10022

During this meeting we would be happy to discuss any other matters of interest to you as PWS operator. Sean Murphy, a consultant working with CHPE, will contact you to identify the best time and place (e.g., in person or on the phone) for the meeting. In the interim, please feel free to contact me at [Josh.Bagnato@TDI-USA.com](mailto:Josh.Bagnato@TDI-USA.com) or 802-477-3830.

Yours truly,

A handwritten signature in black ink, appearing to read "J. Bagnato".

Josh Bagnato  
SVP, Project Development  
CHPE



623 Fifth Avenue, 20th Floor  
New York, New York 10022

October 6, 2023

Darin Dekoskie  
Chief of Water Operations  
New York City

dadekoskie@dep.nyc.gov

***RE: Public Water Supply Intake Owner Consultations for the Champlain Hudson Power Express (CHPE) Project***

Dear Mr. Dekoskie

CHPE LLC and CHPE Properties, Inc. (collectively referred to as “CHPE”) are in the process of developing Environmental Management & Construction Plans (“EM&CPs”) for cable installation within the Hudson River for the Champlain Hudson Power Express project (the “Project”). We are sending this letter to update you on the Project and request that we initiate consultation with you to support the development of the cable installation EM&CP.

Work on the Hudson River will be divided between two EM&CP submissions. First, the Segment 19A EM&CP, submitted to the New York State Public Service Commission on August 4, 2023, covers the Hudson River Submarine Utility Protection (Pre-Lay Mattressing) activities, which involve installation of articulated concrete mattresses over Co-located Infrastructure (CI) crossed by the Project in the Hudson River. Under this EM&CP, no articulated concrete mattresses are proposed to be installed on or near your PWS intake structure, nor are any CI crossings requiring such submarine utility protection located within 2000 feet of the NYCDEP Chelsea intake. Therefore, activities covered in the Segment 19A EM&CP will not impact your infrastructure. However, you are welcome to review a copy of this EM&CP, on the PSC’s website at <http://documents.dps.ny.gov/public/MatterManagement/CaseMaster.aspx?MatterCaseNo=10-T-0139> and on the Project website <https://chpexpress.com/overview-of-public-documents/environmental-management-construction-plan/>.

On or about March 2024, CHPE will file the Segment 19B EM&CP which will outline the installation of the Facility’s cables in the Hudson River. CHPE would like to schedule a meeting in the near future to discuss how we would propose to incorporate this information into the Segment 19B Hudson River Cable Installation EM&CP. Specific topics we would like to consult with you on include:

- PWS plant operations,
- Appropriate notification procedures,
- Service of EM&CP notices and documents,
- Service of construction notices, and
- Schedules and coordination



623 Fifth Avenue, 20th Floor  
New York, New York 10022

During this meeting we would be happy to discuss any other matters of interest to you as PWS operator. Sean Murphy, a consultant working with CHPE, will contact you to identify the best time and place (e.g., in person or on the phone) for the meeting. In the interim, please feel free to contact me at [Josh.Bagnato@TDI-USA.com](mailto:Josh.Bagnato@TDI-USA.com) or 802-477-3830.

Yours truly,

A handwritten signature in black ink, appearing to read 'J. Bagnato', is positioned above the typed name.

Josh Bagnato  
SVP, Project Development  
CHPE



## Sean Murphy

---

**From:** Sean Murphy  
**Sent:** Monday, October 23, 2023 4:24 PM  
**To:** Jonietz, Adolf; Keesler, James; Dekoskie, Darin  
**Cc:** Jennifer White; Will Davie  
**Subject:** Consultation on Champlain Hudson Power Express Project

Good afternoon,

Thank you for speaking with our team today about the NYC public water supply system and in particular the Chelsea Pump Station. The topics we covered specifically included:

- The location of intake structure,
- plant operations,
- raw water quality parameters of concern including turbidity, and
- Appropriate notification procedures

During this conversation, you confirmed that the Chelsea Pump Station has not operated since 1989 and you do not anticipate drawing water from the Hudson River at anytime within the next three years. We will notify you in the same manner as other PWS in terms of when the EM&CP will be available and the overall progress of the installation vessel.

Thank you again for your time and please do not hesitate to contact me if you have any questions.

Best,



**Sean Murphy**  
Senior Project Manager  
Lower Falls Landing, 106 Lafayette Street, Suite 1C  
Yarmouth, ME 04096  
C: (207) 400-6161  
<https://flycatcherllc.com/>



623 Fifth Avenue, 20th Floor  
New York, New York 10022

October 9, 2023

Marc Shaaf, Senior Operator  
David Plavchek, Supervisor  
Margaret O'Halloran, Secretary to Supervisor

mschaaf@townoflloyd.com  
dplaychek@townoflloyd.com  
mohalloran@townoflloyd.com

***RE: Highland Water District Water System Consultations for the Champlain Hudson Power Express (CHPE) Project***

Dear Public Water Supply (PWS) Intake Owner / Operator,

As you know CHPE LLC and CHPE Properties, Inc. (collectively referred to as "CHPE") are in the process of developing Environmental Management & Construction Plans ("EM&CPs") for cable installation within the Hudson River for Champlain Hudson Power Express project (the "Project"). We are sending this letter to confirm our intent to continue consultation with your community to support the development of the cable installation EM&CP.

On or about March 2024, CHPE will file the Segment 19B EM&CP which will outline the installation of the Facility's cables in the Hudson River. In developing this document we intend to rely heavily on prior discussions with the Hudson 7 as well as consultations with PWS owners and operators. On April 25, 2023, CHPE consulted with you as a PWS owner to obtain the following additional information:

- PWS plant operations
- Appropriate notification procedures
- Service of EM&CP notices and documents
- Service of construction notices
- Schedules and coordination
- Emergency plans and other matters of concern, consistent with Hudson 7 discussions

CHPE would like to schedule a follow-up meeting to discuss how we would propose to incorporate this information into the Segment 19B Hudson River Cable Installation EM&CP. During this meeting we would be happy to discuss any other matters of interest to you as PWS intake owner. We would also encourage you to invite anyone else who you believe would be beneficial to this meeting.

CHPE appreciates the time you took to meet with our team and I will be reaching out to you in the near future to discuss scheduling our next meeting. In the interim, please feel free to contact me at 914-282-3068 or Jennifer.White@tdi-usa.com.



623 Fifth Avenue, 20th Floor  
New York, New York 10022

Yours truly,

Jennifer Laird-White  
Senior Vice President, External Affairs



623 Fifth Avenue, 20th Floor  
New York, New York 10022

October 9, 2023

Michael J. Keating, P.E., Executive Director  
Alain Petit, Chief Water Treatment Plant Operator  
Dutchess County Water And Wastewater Authority

mkeating@dutchessny.gov  
Apetit@dutchessny.gov

Alfred Torreggiani, Supervisor  
Hyde Park

Atorreggiani@hydeparkny.us

***RE: Hyde Park Regional Water System Consultations for the Champlain Hudson Power Express (CHPE) Project***

Dear Public Water Supply (PWS) Intake Owner / Operator,

As you know CHPE LLC and CHPE Properties, Inc. (collectively referred to as “CHPE”) are in the process of developing Environmental Management & Construction Plans (“EM&CPs”) for cable installation within the Hudson River for Champlain Hudson Power Express project (the “Project”). We are sending this letter to confirm our intent to continue consultation with your community to support the development of the cable installation EM&CP.

On or about March 2024, CHPE will file the Segment 19B EM&CP which will outline the installation of the Facility’s cables in the Hudson River. In developing this document we intend to rely heavily on prior discussions with the Hudson 7 as well as consultations with PWS owners and operators. On April 26, 2023, CHPE consulted with you as a PWS owner to obtain the following additional information:

- PWS plant operations
- Appropriate notification procedures
- Service of EM&CP notices and documents
- Service of construction notices
- Schedules and coordination
- Emergency plans and other matters of concern, consistent with Hudson 7 discussions

CHPE would like to schedule a follow-up meeting to discuss how we would propose to incorporate this information into the Segment 19B Hudson River Cable Installation EM&CP. During this meeting we would be happy to discuss any other matters of interest to you as PWS intake owner. We would also encourage you to invite anyone else who you believe would be beneficial to this meeting.



623 Fifth Avenue, 20th Floor  
New York, New York 10022

CHPE appreciates the time you took to meet with our team and I will be reaching out to you in the near future to discuss scheduling our next meeting. In the interim, please feel free to contact me at 914-282-3068 or [Jennifer.White@tdi-usa.com](mailto:Jennifer.White@tdi-usa.com).

Yours truly,

Jennifer Laird-White  
Senior Vice President, External Affairs



623 Fifth Avenue, 20th Floor  
New York, New York 10022

October 9, 2023

Nick Butler, Port Ewan Water/Sewer Superintendent  
Danielle Freer, Supervisor, Esopus

Nbutler@esopus.com  
dfreer@esopus.com

***RE: Port Ewan Water System Consultations for the Champlain Hudson Power Express (CHPE) Project***

Dear Public Water Supply (PWS) Intake Owner / Operator,

As you know CHPE LLC and CHPE Properties, Inc. (collectively referred to as “CHPE”) are in the process of developing Environmental Management & Construction Plans (“EM&CPs”) for cable installation within the Hudson River for Champlain Hudson Power Express project (the “Project”). We are sending this letter to confirm our intent to continue consultation with your community to support the development of the cable installation EM&CP.

On or about March 2024, CHPE will file the Segment 19B EM&CP which will outline the installation of the Facility’s cables in the Hudson River. In developing this document we intend to rely heavily on prior discussions with the Hudson 7 as well as consultations with PWS owners and operators. On July 17, 2023, CHPE consulted with you as a PWS owner to obtain the following additional information:

- PWS plant operations
- Appropriate notification procedures
- Service of EM&CP notices and documents
- Service of construction notices
- Schedules and coordination
- Emergency plans and other matters of concern, consistent with Hudson 7 discussions

CHPE would like to schedule a follow-up meeting to discuss how we would propose to incorporate this information into the Segment 19B Hudson River Cable Installation EM&CP. During this meeting we would be happy to discuss any other matters of interest to you as PWS intake owner. We would also encourage you to invite anyone else who you believe would be beneficial to this meeting.

CHPE appreciates the time you took to meet with our team and I will be reaching out to you in the near future to discuss scheduling our next meeting. In the interim, please feel free to contact me at 914-282-3068 or Jennifer.White@tdi-usa.com.



623 Fifth Avenue, 20th Floor  
New York, New York 10022

Yours truly,

Jennifer Laird-White  
Senior Vice President, External Affairs



623 Fifth Avenue, 20th Floor  
New York, New York 10022

October 9, 2023

Randy Alstadt, Water Plant Administrator [ralstadt@pokwater.com](mailto:ralstadt@pokwater.com)  
Marc Nelson, Mayor, City of Poughkeepsie [MNelson@cityofpoughkeepsie.com](mailto:MNelson@cityofpoughkeepsie.com)  
Jon Baisley, Supervisor, Town of Poughkeepsie [jbaisley@townofpoughkeepsie-ny.gov](mailto:jbaisley@townofpoughkeepsie-ny.gov)

***RE: Poughkeepsie Water System Consultations for the Champlain Hudson Power Express (CHPE) Project***

Dear Public Water Supply (PWS) Intake Owner / Operator,

As you know CHPE LLC and CHPE Properties, Inc. (collectively referred to as “CHPE”) are in the process of developing Environmental Management & Construction Plans (“EM&CPs”) for cable installation within the Hudson River for Champlain Hudson Power Express project (the “Project”). We are sending this letter to confirm our intent to continue consultation with your community to support the development of the cable installation EM&CP.

On or about March 2024, CHPE will file the Segment 19B EM&CP which will outline the installation of the Facility’s cables in the Hudson River. In developing this document we intend to rely heavily on prior discussions with the Hudson 7 as well as consultations with PWS owners and operators. On May 1 and 2, 2023, CHPE consulted with the Town and City of Poughkeepsie to obtain the following additional PWS information:

- PWS plant operations
- Appropriate notification procedures
- Service of EM&CP notices and documents
- Service of construction notices
- Schedules and coordination
- Emergency plans and other matters of concern, consistent with Hudson 7 discussions

CHPE would like to schedule a follow-up meeting to discuss how we would propose to incorporate this information into the Segment 19B Hudson River Cable Installation EM&CP. During this meeting we would be happy to discuss any other matters of interest to you as PWS intake owner. We would also encourage you to invite anyone else who you believe would be beneficial to this meeting.





623 Fifth Avenue, 20th Floor  
New York, New York 10022

CHPE appreciates the time you took to meet with the team and I will be reaching out to you in the near future to schedule our next meeting. In the interim, please feel free to contact me at 914-282-3068 or Jennifer.White@transmissiondevelopers.com.

Yours truly,

Jennifer Laird-White  
Senior Vice President, External Affairs



623 Fifth Avenue, 20th Floor  
New York, New York 10022

October 9, 2023

Bryan Alix, Chief Water Treatment Plant Operator [Water@villageofrhinebeckny.gov](mailto:Water@villageofrhinebeckny.gov)  
Gary Bassett, Mayor, Village of Rhinebeck [MayorBassett@villageofrhinebeckny.gov](mailto:MayorBassett@villageofrhinebeckny.gov)

***RE: Rhinebeck Water System Consultations for the Champlain Hudson Power Express (CHPE) Project***

Dear Public Water Supply (PWS) Intake Owner / Operator,

As you know CHPE LLC and CHPE Properties, Inc. (collectively referred to as “CHPE”) are in the process of developing Environmental Management & Construction Plans (“EM&CPs”) for cable installation within the Hudson River for Champlain Hudson Power Express project (the “Project”). We are sending this letter to confirm our intent to continue consultation with your community to support the development of the cable installation EM&CP.

On or about March 2024, CHPE will file the Segment 19B EM&CP which will outline the installation of the Facility’s cables in the Hudson River. In developing this document we intend to rely heavily on prior discussions with the Hudson 7 as well as consultations with PWS owners and operators. On May 2, 2023, CHPE consulted with you as a PWS owner to obtain the following additional information:

- PWS plant operations
- Appropriate notification procedures
- Service of EM&CP notices and documents
- Service of construction notices
- Schedules and coordination
- Emergency plans and other matters of concern, consistent with Hudson 7 discussions

CHPE would like to schedule a follow-up meeting to discuss how we would propose to incorporate this information into the Segment 19B Hudson River Cable Installation EM&CP. During this meeting we would be happy to discuss any other matters of interest to you as PWS intake owner. We would also encourage you to invite anyone else who you believe would be beneficial to this meeting.

CHPE appreciates the time you took to meet with the team and I will be reaching out to you in the near future to schedule our next meeting. In the interim, please feel free to contact me at 914-282-3068 or [Jennifer.White@transmissiondevelopers.com](mailto:Jennifer.White@transmissiondevelopers.com).



623 Fifth Avenue, 20th Floor  
New York, New York 10022

Yours truly,

Jennifer Laird-White  
Senior Vice President, External Affairs



P.O. Box 1068,  
Bath, ME 04350

T 207.215.2872  
kemack@TRCcompanies.com

April 4, 2024

Jessica Schreyer, Archaeology Unit Program Coordinator  
New York State Office of Parks, Recreation and Historic Preservation  
Historic Preservation Field Services Bureau  
Peebles Island Resource Center, P.O. Box 189  
Waterford, New York 12188-0189

**RE: Request for Cultural Resources Review for the Champlain Hudson Power Express Project (Project) – Hudson River Marine Segment Cable Installation**

Dear Ms. Schreyer:

Champlain Hudson Power Express, LLC (CHPE) requests consultation with the New York State Office of Parks, Recreation and Historic Preservation for (OPRHR) for the cable installation in the Hudson River Marine Segment of the proposed Project in accordance with the Cultural Resource Management Plan (CRMP) and Supplemental Cultural Resource Management Plan (SCRMP) as stipulated by the *Programmatic Agreement Among The U.S. Department of Energy, And The New York State Historic Preservation Officer for Managing Historic Properties That May Be Affected By Authorizing The Construction, Operation, Connection And Maintenance Of The Champlain Hudson Power Express HVDC Transmission Line Project* for the consideration and management of historic properties within the Project area.

The Hudson River Marine Segment of the proposed Project involves the construction of high voltage direct current (HVDC) underwater transmission cable across two segments in the Hudson River. The Cementon-Stony Point Hudson Marine Segment runs along a 67-statute mile (107 kilometer) path in the Hudson River from the Hamlet of Cementon, Town of Catskill, Greene County, New York to the Town of Stony Point, Rockland County, New York. The Congers-Harlem Hudson Marine Segment is along an approximate 21-statute mile (33 kilometer) path from the Hamlet of Congers, Town of Clarkstown, Rockland County, New York to the entrance of the Harlem River at Spuyten Duyvil, Bronx, New York.

TRC contracted with the Lake Champlain Maritime Museum (LCMM) to conduct a Phase IA review and analysis of potential underwater cultural resources within a 500-foot survey corridor for the proposed cable installation in the Hudson River. The results of this investigation are contained within the *Final Report for the Underwater Cultural Resource Review of the Champlain Hudson Power Express, Hudson River Segment Investigations*.

Based on the results of the investigations, TRC has prepared a SCRMP to provide the framework in which potential impacts to relevant historical properties and archaeological sites (determined to be eligible for or listed in the National Register of Historic Places [NRHP]) known to exist or may be discovered are to be managed during construction.

TRC looks forward to receiving your review of this information. If you have any questions or would like any additional information, please feel free to contact Karen Mack at 207-215-2872 or [kemack@trccompanies.com](mailto:kemack@trccompanies.com).

Thank you,

A handwritten signature in black ink that reads "Karen E. Mack".

Karen E. Mack, M.S.,  
Principal Archaeologist

**Attachments:**

Attachment 1: Supplemental CRMP

## Latham, Tierney

---

**From:** TLatham@trccompanies.com  
**Subject:** FW: [EXTERNAL] NY SHPO: Unrequested Submission BMTRX8R129P4 Received for Consultation Project 09PR03910

---

**From:** New York State Parks CRIS Application <[cris.web@parks.ny.gov](mailto:cris.web@parks.ny.gov)>  
**Sent:** Friday, April 5, 2024 7:01 AM  
**To:** [Josh.Bagnato@transmissiondevelopers.com](mailto:Josh.Bagnato@transmissiondevelopers.com)  
**Cc:** Mack, Karen E. <[kemack@trccompanies.com](mailto:kemack@trccompanies.com)>  
**Subject:** [EXTERNAL] NY SHPO: Unrequested Submission BMTRX8R129P4 Received for Consultation Project 09PR03910

This is an **External** email. Do not click links or open attachments unless you validate the sender and know the content is safe.

**ALWAYS** hover over the link to preview the actual URL/site and confirm its legitimacy.

### Unrequested Submission Received

The New York State Historic Preservation Office (SHPO) has received the following unrequested submission.

**Unrequested Submission Token:** BMTRX8R129P4

**Project Number:** 09PR03910

**Project Type:** Consultation

**Project Name:** Champlain Hudson Power Express/TDI/Underwater HVdc Transmission Line

**Submission Description:** Supplemental CRMP for the Hudson River Segment (19B) of the CHPE Project with LCMM's report on underwater cultural resources along this segment.

#### New York State Historic Preservation Office

Peebles Island State Park, P.O. Box 189, Waterford, NY 12188-0189

518-237-8643 | <https://parks.ny.gov/shpo>

CRIS: <https://cris.parks.ny.gov>

**Are you registered to vote?** [Register to vote online today](#). Moved recently? Update your information with the NYS Board of Elections. Not sure if you're registered to vote? [Search your voter registration status](#).

---

### Who sent this email?

This email is a notification from the [New York State Cultural Resource Information System \(CRIS\)](#). CRIS is an online service administered by the [New York State Division for Historic Preservation](#), also known as the New York State Historic Preservation Office (SHPO), which is a division of [New York State Parks, Recreation & Historic Preservation](#).

This message pertains to a submission for a consultation project. Please see SHPO's [Environmental Review](#) web page for more information about the consultation process.

### Why did I receive this email?

You are the project's primary contact, or you are the submitter of the unrequested submission.

### What do I need to do?

You do not need to take any action at this time. The submission is now in SHPO's processing queue.

### What will happen next?

If SHPO accepts your submission, you will receive an "Unrequested Submission Accepted" email notification, the submission will receive a new submission number, and the submission's contents will be added to the project. SHPO will then review the submission.

### What else can I do?

Please see the following help topics for more information about unrequested submissions and projects in CRIS:

- [How do I check the review status of my project?](#)
- [How long does SHPO take to review projects?](#)
- [Submit New Information for an Existing Project](#)

### Where can I get help?

Please visit the CRIS Online Help System: <https://cris.parks.ny.gov/CRISHelp>

If you still have questions about CRIS, please contact CRIS Help at [CRISHelp@parks.ny.gov](mailto:CRISHelp@parks.ny.gov).

For any other questions, please call SHPO at 518-237-8643.