



623 Fifth Avenue, 20th Floor
New York, New York 10022

Notice of Change to Segment 12 EM&CP For the Champlain Hudson Power Express Line

Dear Stakeholder,

On or about March 4, 2024, CHPE LLC and CHPE Properties, Inc. (collectively referred to as “CHPE”) will submit a proposed major change to the approved Environmental Management & Construction Plan (“EM&CP”) for Segment 12 of the Champlain Hudson Power Express (“CHPE”) Project. The Segment 12 EM&CP was previously approved by the New York State Public Service Commission (“PSC”) on August 18, 2023. Segment 12 includes installation of approximately 7.6 miles of buried electrical transmission line within the public road right-of-way (ROW) of Route 9W in the Towns of Stony Point, Haverstraw and Clarkstown, including the Villages of Haverstraw and West Haverstraw (Rockland County). This proposed change involves three route modifications in the Town of Stony Point: one along Park Road which is necessary to avoid newly-installed water infrastructure; movement of a vault and workspaces along North Liberty Drive to reduce impacts to a local business; and revisions to a small portion of the route on Route 9W near Helen Hayes Hospital to reduce impacts to traffic.

The PSC issued a Certificate of Environmental Compatibility and Public Need (“Certificate”) to CHPE on April 18, 2013 to construct and operate the CHPE Project. Pursuant to that Certificate, CHPE is required to circulate notices to certain landowners, utility owners, municipalities and agencies near the proposed Segment’s construction activities when it proposes to make a change to the Facility route approved in an EM&CP. This notice provides maps showing the proposed change and provides links and contact information which stakeholders can use to obtain further information or to submit comments on the proposed change. The EM&CP change must be reviewed and approved by the PSC before construction on the areas subject to this change can begin.

Overview maps showing the proposed EM&CP change accompany this notice. Further details of the planned work locations will be made available on the Project website at: <https://chpexpress.com/overview-of-public-documents/environmental-management-construction-plan/>. Construction activities for this Segment are anticipated to commence in the spring or summer of 2024. In general, construction within much of Segment 12 will generally extend through the nighttime hours to minimize impacts to the traveling public, and to achieve completion of construction work as quickly as possible.

Contact Information and Document Repositories

CHPE has established a toll-free number for questions regarding the Project: 1-800-991-CHPE (2473). Questions or requests for further information can be directed to publicoutreach@chpexpress.com or by mail to Molly Hollister, WSP USA, One Pennsylvania Plaza, New York, New York 10119.

The EM&CP change documents are available on the PSC’s website at <http://documents.dps.ny.gov/public/MatterManagement/CaseMaster.aspx?MatterCaseNo=10-T->



623 Fifth Avenue, 20th Floor
New York, New York 10022

0139 and on the Project website <https://chpexpress.com/overview-of-public-documents/environmental-management-construction-plan/>

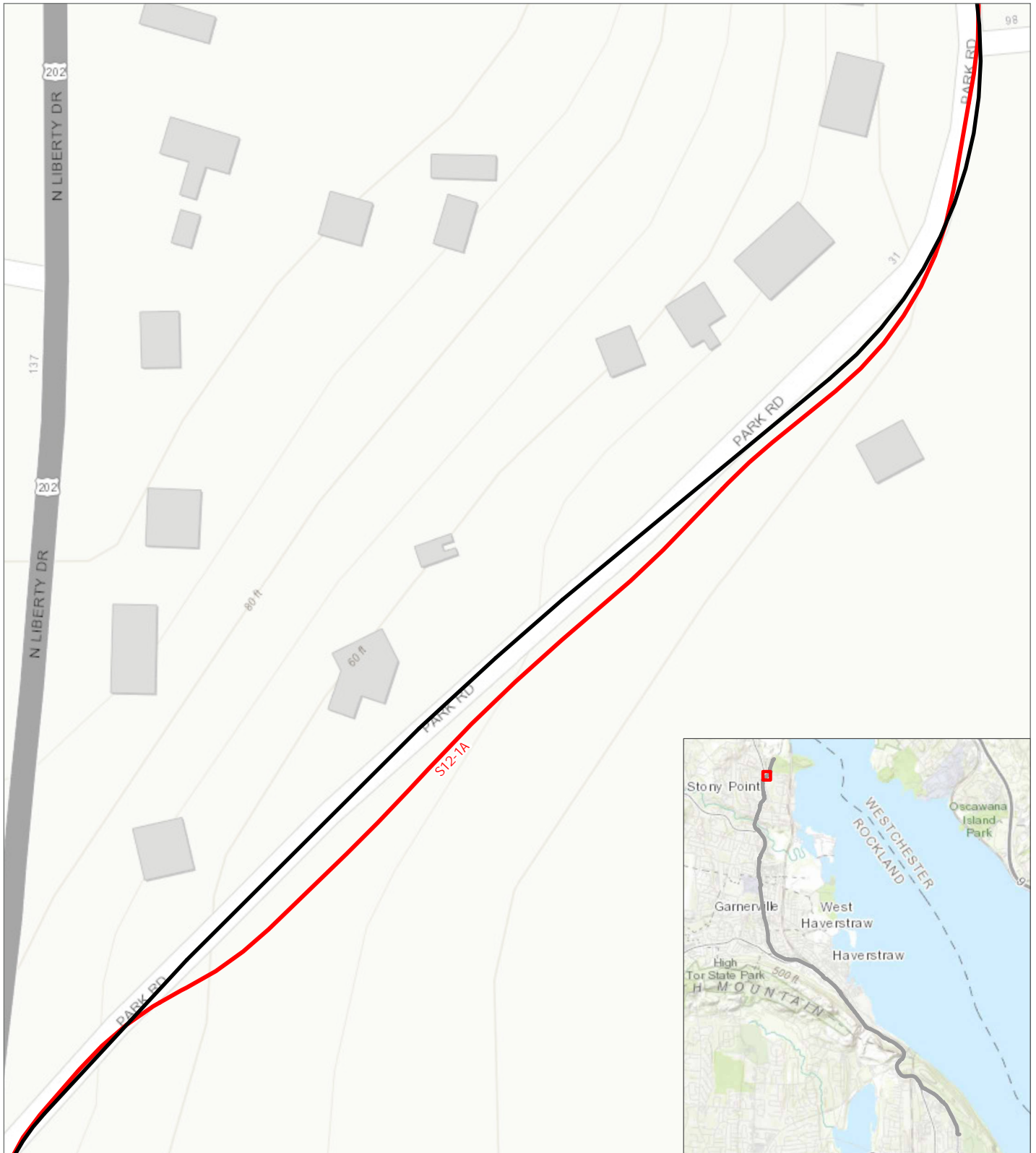
Paper copies of the EM&CP are available for viewing at the following local document repositories: Rose Memorial Library Association, 79 East Main Street, Stony Point, NY 10980; New City Library, 220 North Main Street, New City, NY 10956.

Filing Comments

Any person wishing to be heard by the Commission on any matter related to the proposed EM&CP may file written comments with the Commission Secretary by email at secretary@dps.ny.gov or by mail to Michelle Phillips, Secretary, NYS Public Service Commission, 3 Empire State Plaza, Albany, NY, 12223, within 21 days of this notice. All comments should reference Case Number 10-T-0139.

Yours truly,

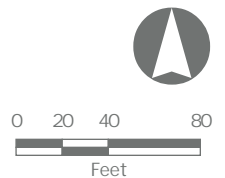
Josh Bagnato
Vice President, Development

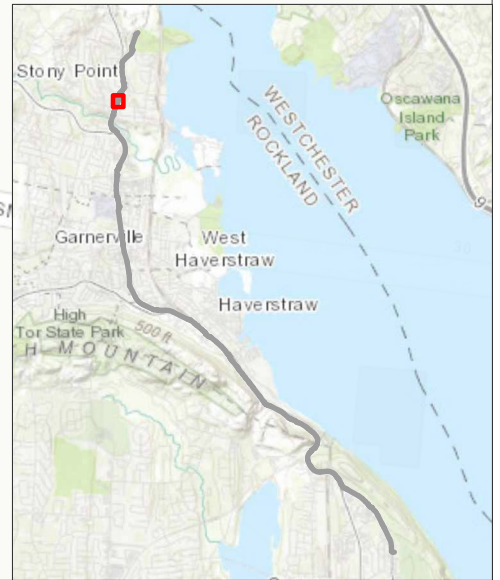
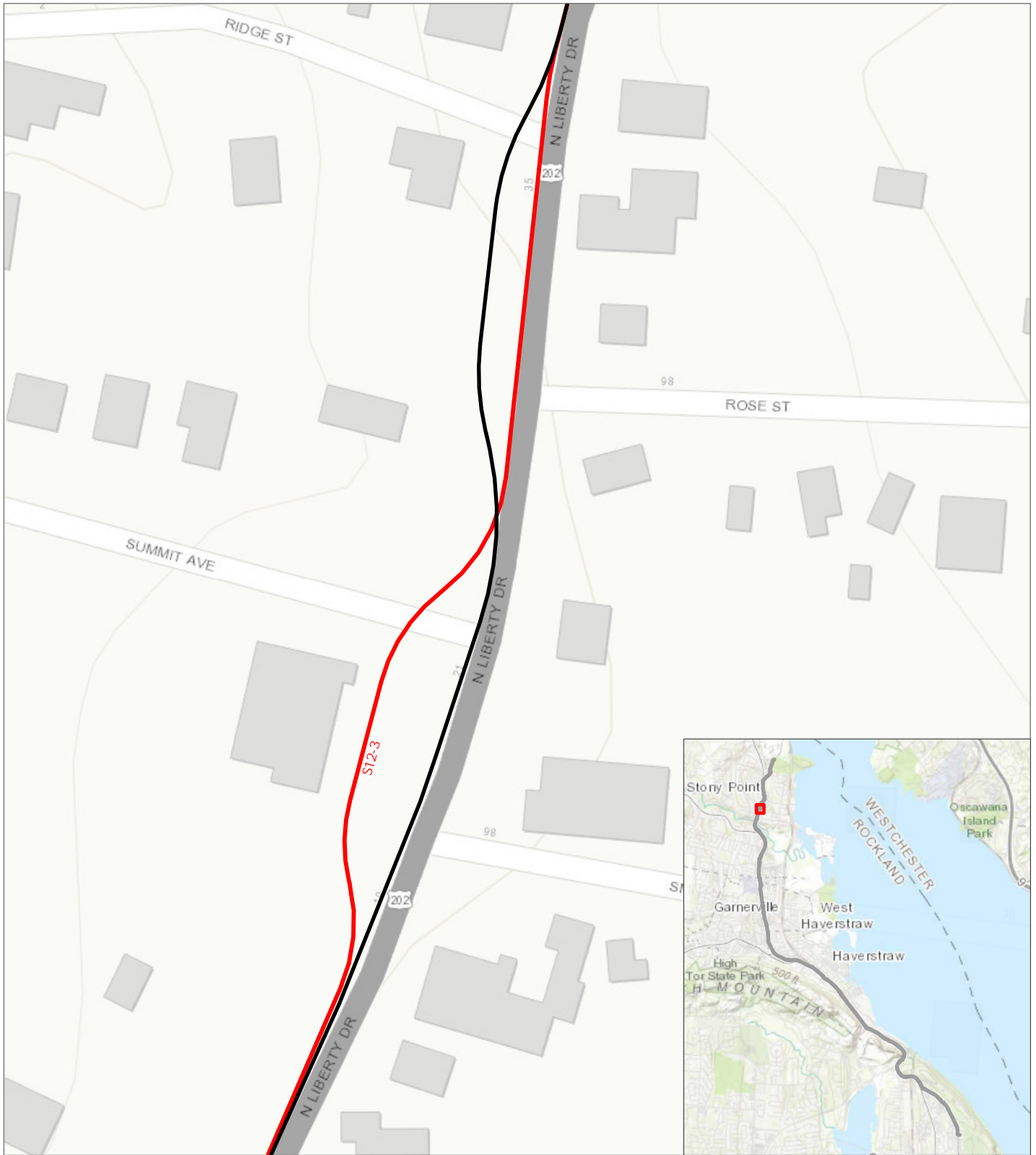


CHPE EM& CP
Rockland County, New York

Public Change
Notice Exhibit

- Previously Approved Route
- Proposed Route Revision

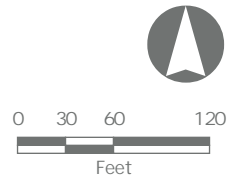


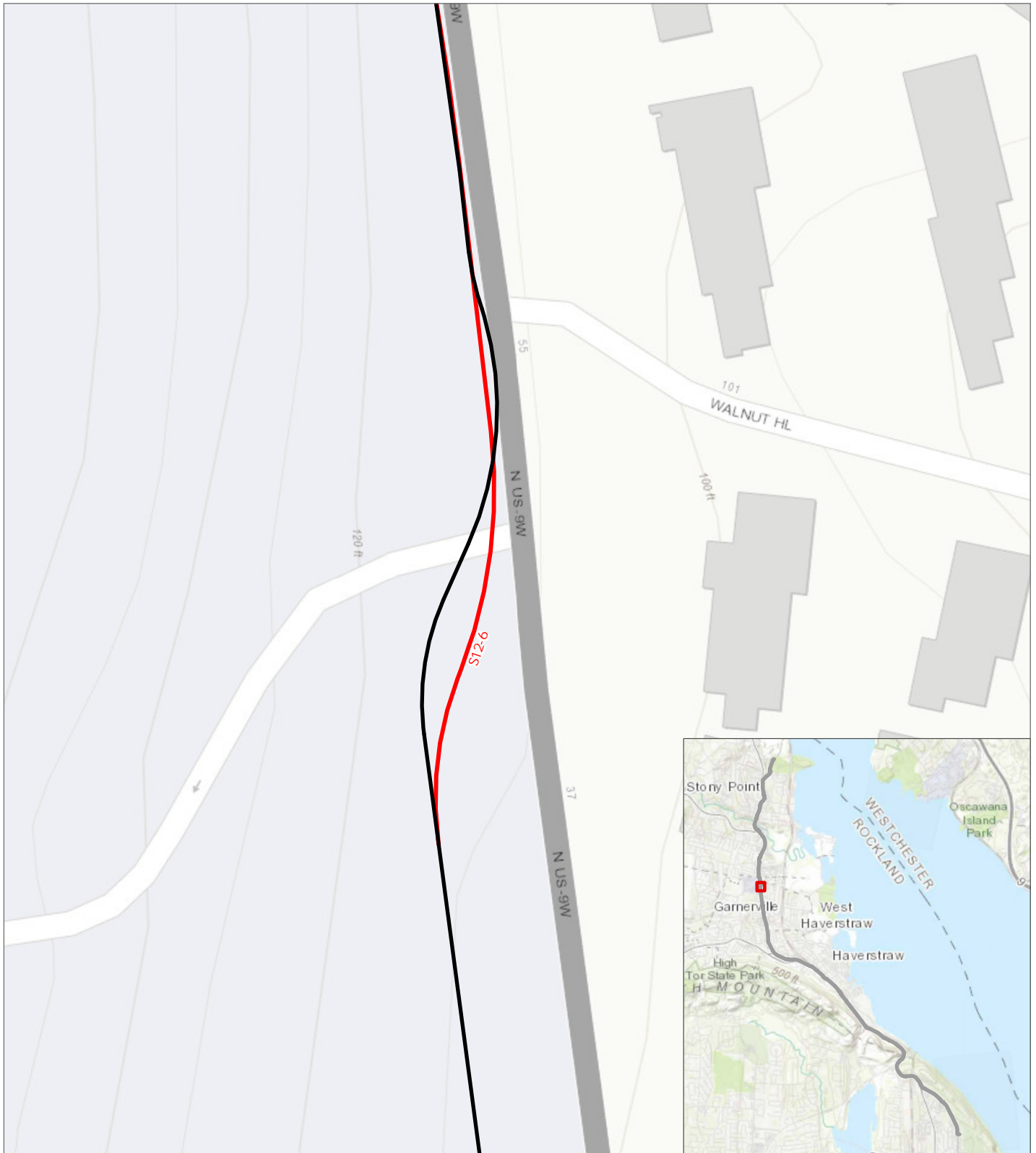


CHPE EM& CP
Rockland County, New York

Public Change
Notice Exhibit

- Previously Approved Route
- Proposed Route Revision





CHPE EM& CP
Rockland County, New York

Public Change
Notice Exhibit

- Previously Approved Route
- Proposed Route Revision

