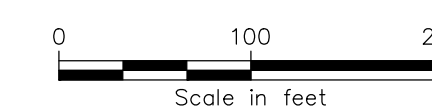


PEDESTRIAN DETOUR HDD 131-132 & SV 248 PLAN VIEW

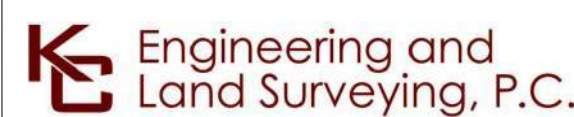
SCALE: 1" = 100'



NOTES:

- 1. SEE NYSDOT STANDARD SHEET 619-520 FOR ADDITIONAL DETAILS.

LEGEND	
	CONSTRUCTION SIGNS
	TYPE III BARRICADE ITEM 619.04
	WORK ZONE
	DIRECTION OF TRAFFIC
	CHANNELIZING DEVICE ITEM 619.07010001



IT IS A VIOLATION OF LAW FOR ANY PERSON, UNLESS THEY ARE ACTING UNDER THE DIRECTION OF A LICENSED PROFESSIONAL ENGINEER, ARCHITECT, LANDSCAPE ARCHITECT OR LAND SURVEYOR TO ALTER AN ITEM IN ANY WAY. IF AN ITEM BEARING THE STAMP OF A LICENSED PROFESSIONAL IS ALTERED, THE ALTERING ENGINEER, ARCHITECT, LANDSCAPE ARCHITECT OR LAND SURVEYOR SHALL STAMP THE DOCUMENT AND INCLUDE THE NOTATION "ALTERED BY" FOLLOWED BY THEIR SIGNATURE, THE DATE OF SUCH ALTERATION, AND A SPECIFIC DESCRIPTION OF THE ALTERATION.

No.	DATE	SUBMITTAL / REVISION DESCRIPTION	DB	APP
1	12/22/2023	NDC-0030: NYSDOT R8 DIRECTED CHANGES	MS	SB
0	07/20/2023	ISSUED FOR CONSTRUCTION SUBMISSION	MS	SB

CHAMPLAIN HUDSON POWER EXPRESS
SEGMENT 12 (PACKAGE 7B) - ROUTE 9W: ROCKLAND
WORK ZONE TRAFFIC CONTROL DETAILS
PEDESTRIAN DETOUR HDD 131-132 & SV 248

PERMIT DRAWING NO.

N/A

DRAWING NO.

O-804

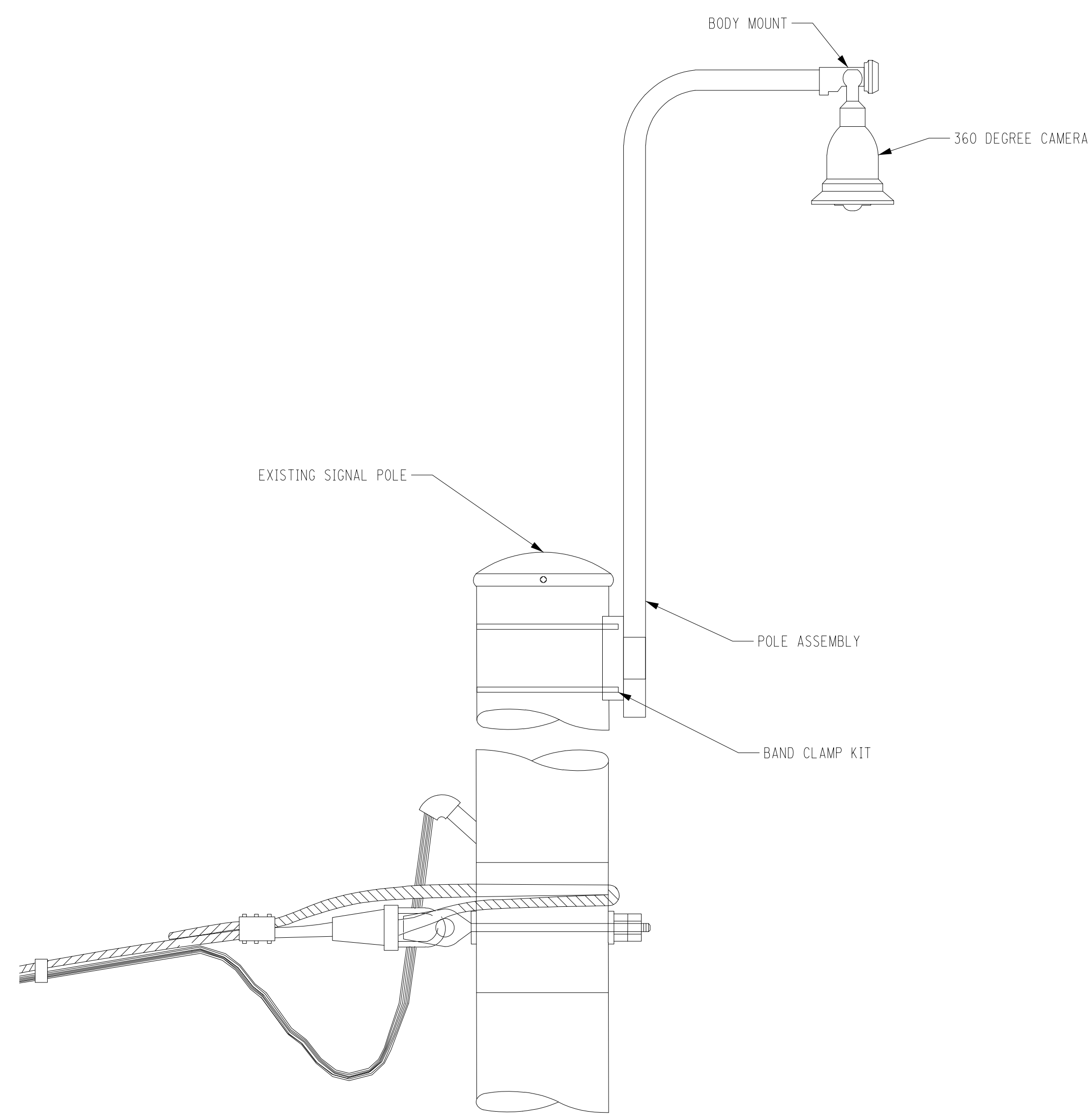
DRAWN BY: MS DESIGNED BY: MS APPROVED BY: SB SCALE AS SHOWN DATE: 07/20/2023

File: F:\120174-CHPE-CABLE-INSTALL-INSTALL-KIEWIT\60_CAD\20_ENGINEERING_CAD_FILES\PACKAGE_7B\NY_TRAFFIC_SAFETY\01_KCE\SHEET_FILES\2023.12.06.DPS_REVI\21162_7B_0_804_HDD_131-132_SV248_PD.DWG Saved: 12/20/2023 2:04:21 PM Plotted: 12/20/2023 3:51:32 PM Current User: Manny Sharma

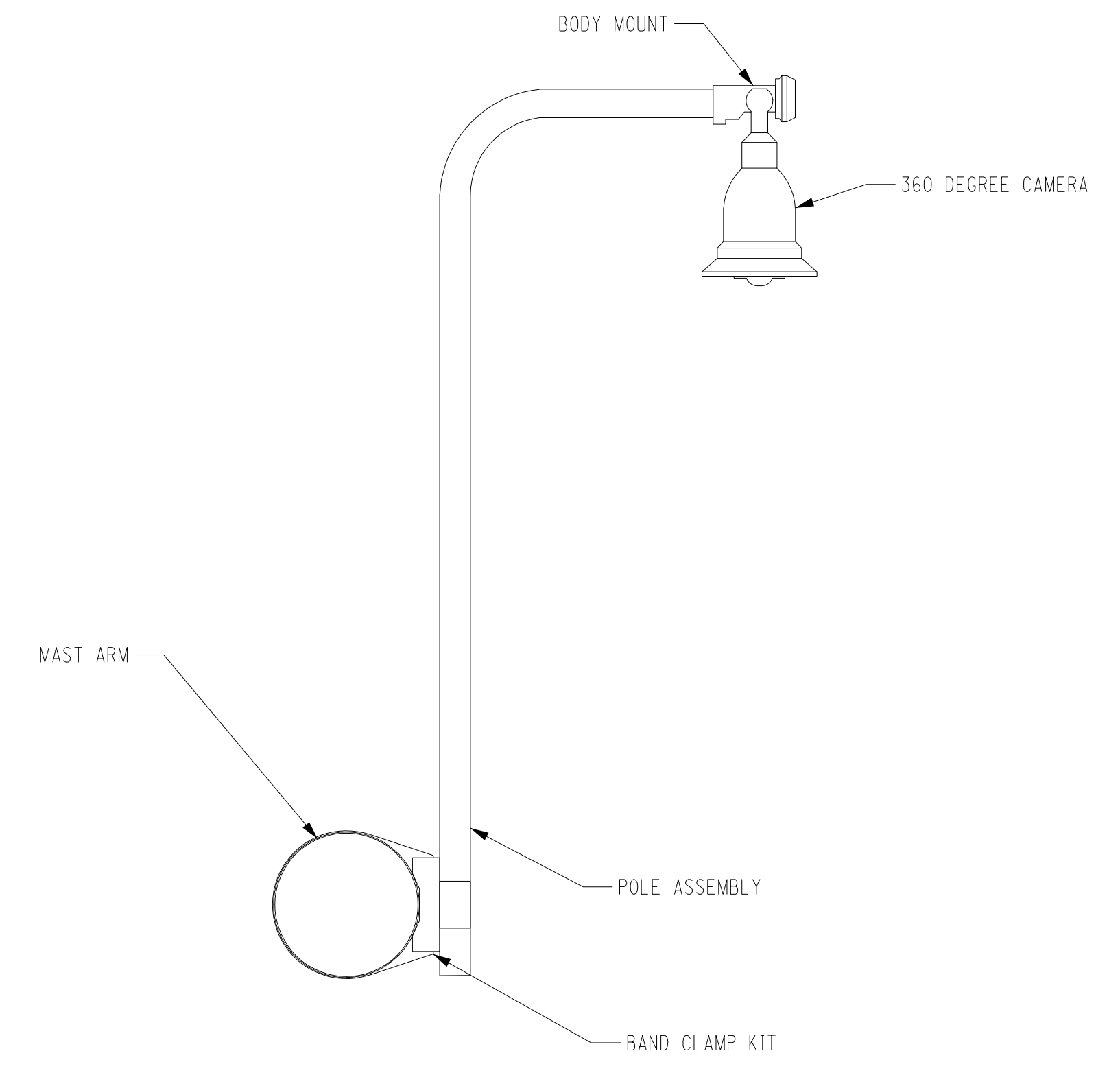


CHPE LLC
623 Fifth Avenue, 20th Floor
New York, NY 10022

Traffic Signals



VIDEO DETECTION CAMERA DETAIL
MOUNTED ON A SPAN POLE
NOT TO SCALE



VIDEO DETECTION CAMERA DETAIL
MOUNTED ON A MAST ARM
NOT TO SCALE

NOTES:

1. ALL MOUNTING HARDWARE SHALL BE PROVIDED BY THE MANUFACTURER AND BE INCLUDED IN THE PRICE OF THE 360 DEGREE VIDEO DETECTION SYSTEM.
2. ALL EQUIPMENT SHALL MEET THE CONTRACT SPECIFICATION. STYLE OF CAMERA AND HARDWARE MAY VARY BY MANUFACTURER.
3. ORIENTATION OF TRAFFIC CAMERA WILL BE BASED ON SITE CONDITIONS.

AS-BUILT REVISIONS DESCRIPTION OF ALTERATIONS:	PIN	BRIDGES	CULVERTS	ALL DIMENSIONS IN ft UNLESS OTHERWISE NOTED	CONTRACT NUMBER
	COUNTY:	REGION:			DRAWING NO. SHEET NO.



IT IS A VIOLATION OF LAW FOR ANY PERSON, UNLESS THEY ARE ACTING UNDER THE DIRECTION OF A LICENSED PROFESSIONAL ENGINEER, ARCHITECT, LANDSCAPE ARCHITECT OR LAND SURVEYOR TO ALTER AN ITEM IN ANY WAY, IF AN ITEM BEARING THE STAMP OF A LICENSED PROFESSIONAL IS ALTERED, THE ALTERING ENGINEER, ARCHITECT, LANDSCAPE ARCHITECT OR LAND SURVEYOR SHALL STAMP THE DOCUMENT AND INCLUDE THE NOTATION "ALTERED BY" FOLLOWED BY THEIR SIGNATURE, THE DATE OF SUCH ALTERATION, AND A SPECIFIC DESCRIPTION OF THE ALTERATION.

No.	DATE	SUBMITTAL / REVISION DESCRIPTION	DB	APP
1	01/09/2024	NDC-0030: NYS DOT R8 DIRECTED CHANGES	MM	DC
0	07/20/2023	ISSUED FOR CONSTRUCTION SUBMISSION	MM	DC

**CHAMPLAIN HUDSON POWER EXPRESS
SEGMENT 12 (PACKAGE 7B) - ROUTE 9W: ROCKLAND**

**VIDEO DETECTION CAMERA DETAIL
NON-INTRUSIVE DETECTION SYSTEM**

DRAWN BY: MM DESIGNED BY: MM APPROVED BY: DC

SCALE: AS SHOWN DATE: 07/20/2023

PERMIT DRAWING NO.
DRAWING NO.
T-115

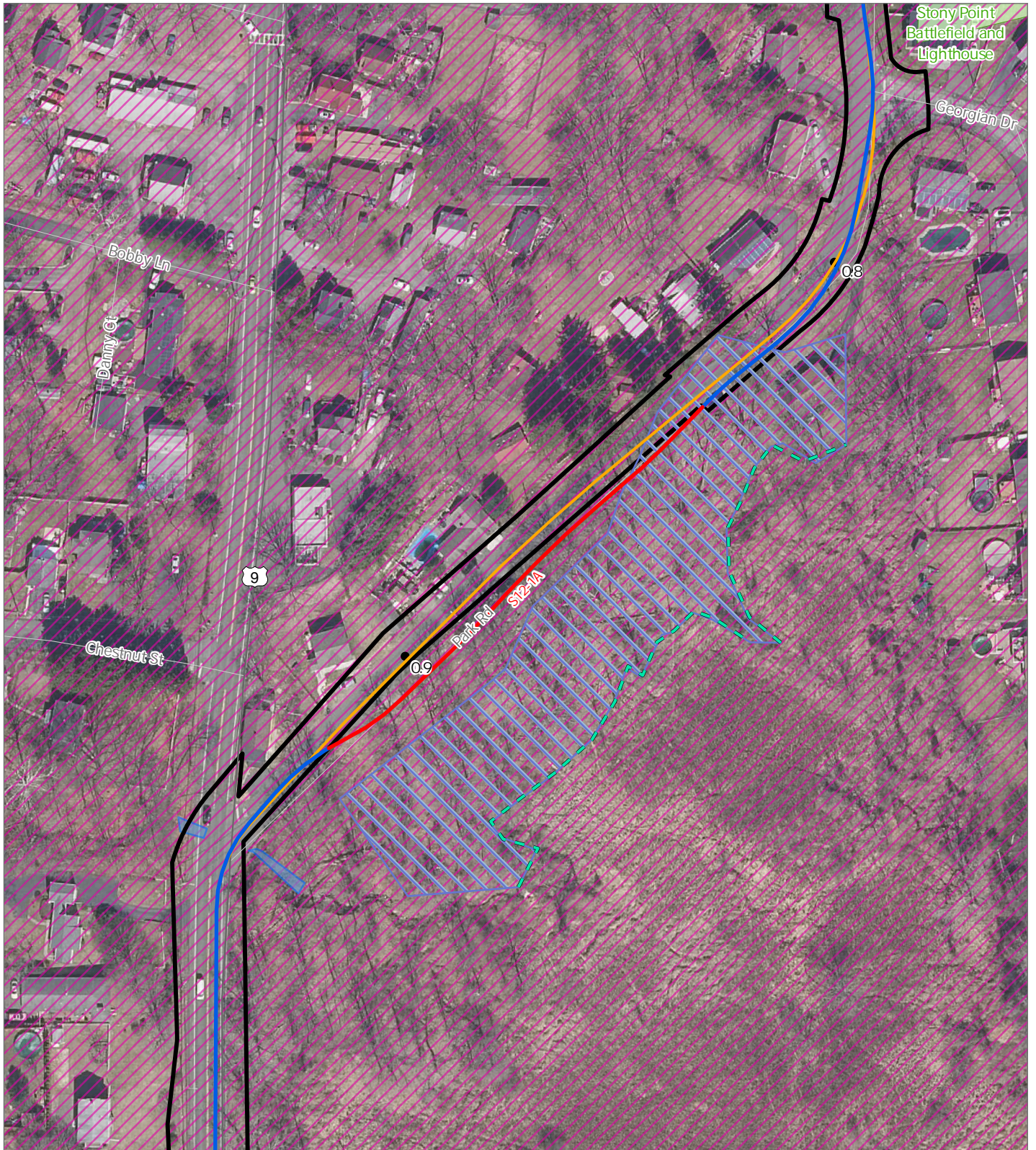
File: P:\VIE-CHPE\3-DES\15 TRF\SHITS\7B\VIDEO DETECTION CAMERA DETAIL_NYS DOT_CLD_010824.DWG Saved: 1/9/2024 10:23:33 AM Plotted: 1/9/2024 10:24:27 AM Current User: Meghana.Mirrekonti LastSavedBy: Meghana.Mirrekonti



CHPE LLC
623 Fifth Avenue, 20th Floor
New York, NY 10022

Appendix E

Updates to Excursion Exhibits

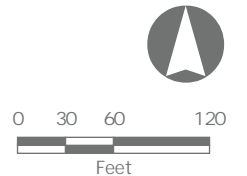


CHPE EM& CP
Rockland County, New York

EM& CP Appendix E
Change Notice



- Mile Post
- Segment 12 Trench
- Segment 12 Trench Excursion
- Segment 12 (Previous Alignment)
- Wetland Boundary
- Delineated Stream
- State-Regulated Adjacent Area (RAA)
- Recreation Area
- ESA 1
- Deviation Zone

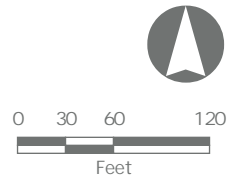




CHPE EM& CP
Rockland County, New York

EM& CP Appendix E
Change Notice

- Mile Post
- Recreation Area
- Segment 12 Trench
- ▨ ESA 1
- Segment 12 Trench Excursion
- ▭ Deviation Zone
- Segment 12 (Previous Alignment)





CHPE EM& CP
Rockland County, New York

EM& CP Appendix E
Change Notice

- Mile Post
- Segment 12 (Previous Alignment)
- Segment 12 Trench
- Segment 12 Trench Excursion
- - - Segment 12 HDD Excursion
- Recreation Area
- ESA 1
- ▭ Deviation Zone



0 30 60 120
Feet