

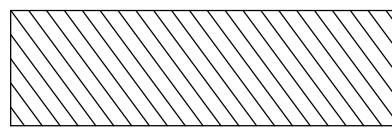

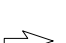

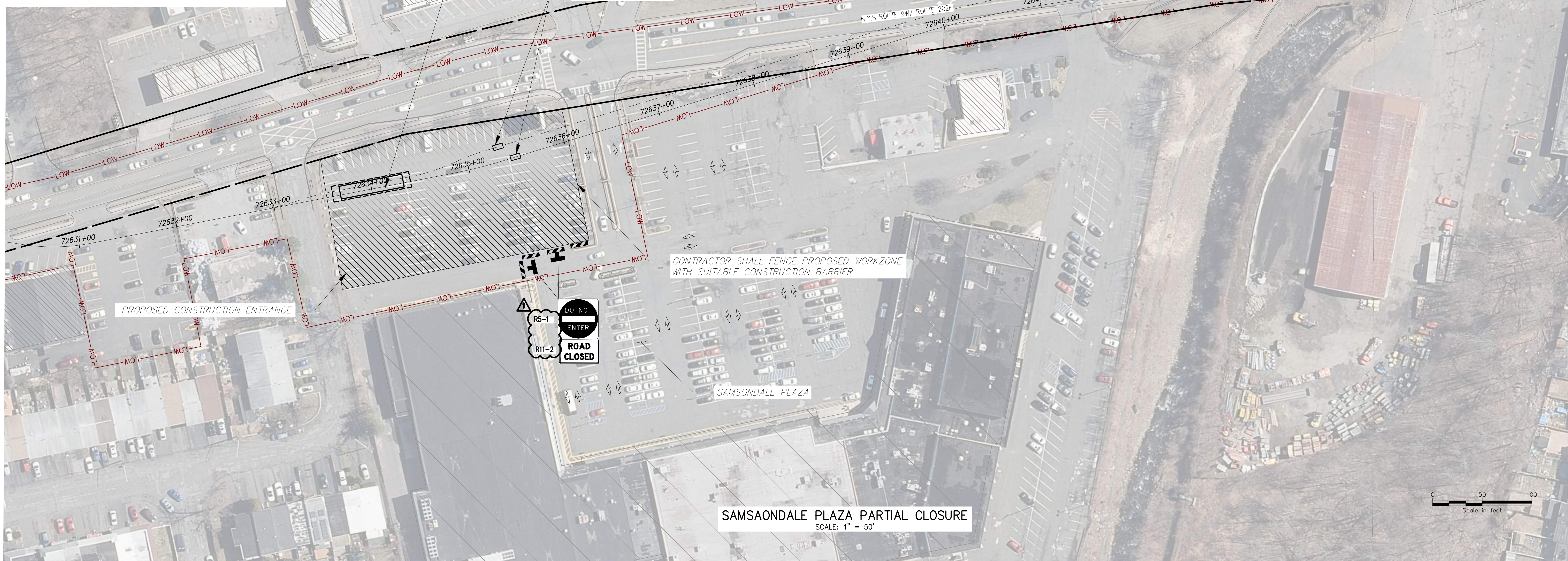


LEGEND

-  CONSTRUCTION SIGNS
-  TYPE III BARRICADE ITEM 619.04
-  WORK ZONE
-  FLAGGER
-  DIRECTION OF TRAFFIC
-  CHANNELIZING DEVICE ITEM 619.07010001

- NOTES:**
- POSTED SPEED LIMIT ON ROUTE 9W = 30MPH
 - MTP LAYOUT IS FOR SPLICE VAULT 247 & HDD 129 ENTRY PITS.
 - ESTIMATED TIME OF COMPLETION FOR HDD 129 IS 81 DAYS. WORKZONE TO BE ACTIVE 24/7.
 - CONTRACTOR TO MAINTAIN ACCESS TO BUSINESSES AT ALL TIMES. KENNEDY DRIVE SHALL BE FULLY CLOSED FOR HDD 129 PULLBACK (2 DAYS) SEE DWG. NO. 0-707 FOR CLOSURE DETAILS.



PROJECT NO.: 21162



PROJECT NO.: 120174

Engineering and Land Surveying, P.C.

ALTERED ON:

AFFIXED ON: 12/22/2023



IT IS A VIOLATION OF LAW FOR ANY PERSON, UNLESS THEY ARE ACTING UNDER THE DIRECTION OF A LICENSED PROFESSIONAL ENGINEER, ARCHITECT, LANDSCAPE ARCHITECT OR LAND SURVEYOR TO ALTER AN ITEM IN ANY WAY. IF AN ITEM BEARING THE STAMP OF A LICENSED PROFESSIONAL IS ALTERED, THE ALTERING ENGINEER, ARCHITECT, LANDSCAPE ARCHITECT OR LAND SURVEYOR SHALL STAMP THE DOCUMENT AND INCLUDE THE NOTATION "ALTERED BY" FOLLOWED BY THEIR SIGNATURE, THE DATE OF SUCH ALTERATION, AND A SPECIFIC DESCRIPTION OF THE ALTERATION.

No.	DATE	SUBMITTAL / REVISION DESCRIPTION	DB	APP
1	12/22/2023	NDC-0030: NYSDOT R8 DIRECTED CHANGES	MS	SB
0	07/20/2023	ISSUED FOR CONSTRUCTION SUBMISSION	MS	SB

**CHAMPLAIN HUDSON POWER EXPRESS
SEGMENT 12 (PACKAGE 7B) - ROUTE 9W: ROCKLAND**

**WORK ZONE TRAFFIC CONTROL DETAIL
SPLICE VAULT 247 & HDD 129 ENTRY PITS
SAMSONDALE PLAZA**

DRAWN BY: MS DESIGNED BY: MS APPROVED BY: SB SCALE AS SHOWN DATE: 07/20/2023

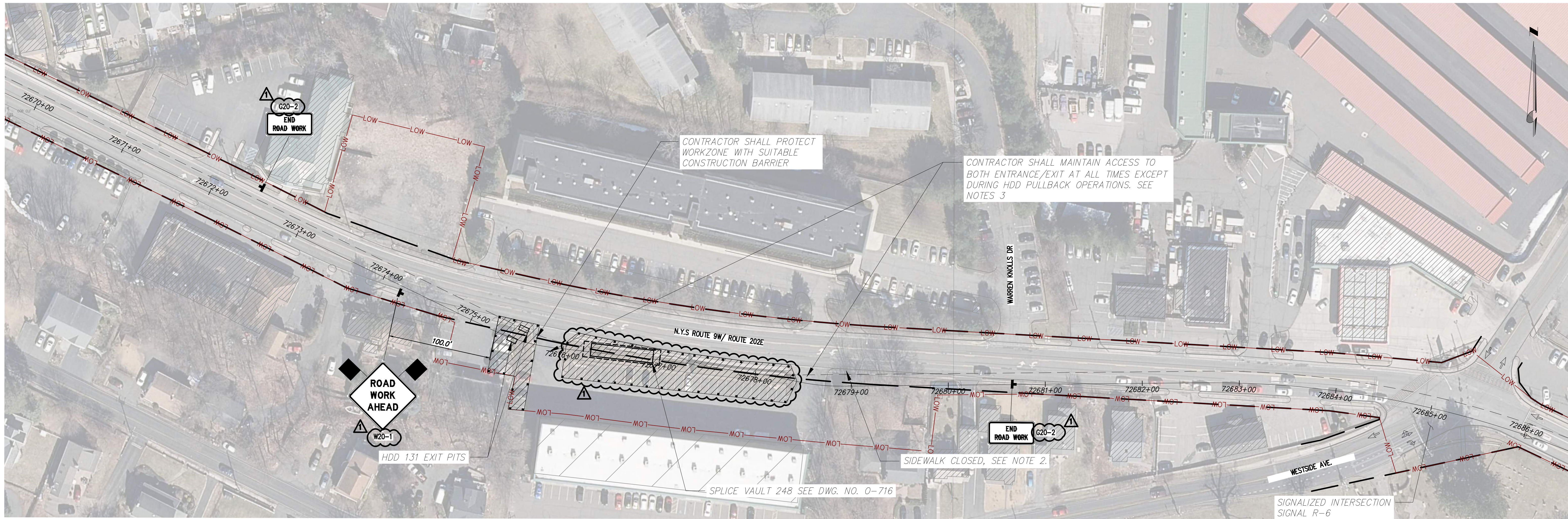
PERMIT DRAWING NO. **N/A**

DRAWING NO. **0-712**

A

B

File: F:\120174-CHPE_CABLE_INSTALL-INSTALL_FILES\ENGINEERING_CAD\20_ENGINEERING_CAD_FILES\PACKAGE_7B\NY_TRAFFIC_SAFETY\01_KACE\SHEET_FILES\2023.12.06.DPS_NEW\21162_7B_0_712_SV247_HDD129ENTRY.DWG Saved: 12/20/2023 12:07:18 PM Plotted: 12/20/2023 3:37:51 PM Current User: Manny Sharma

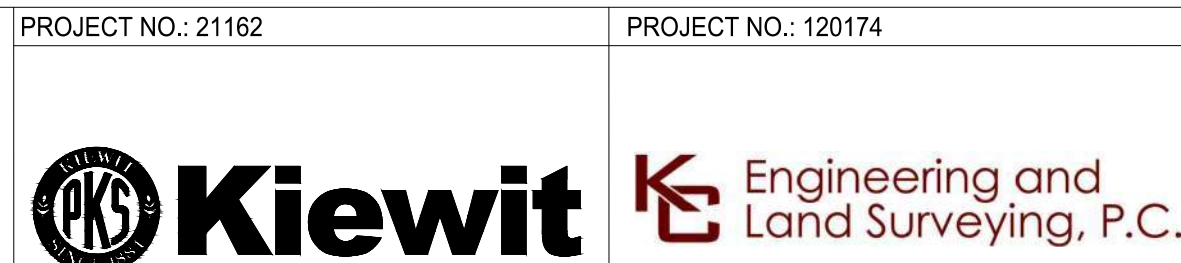


STAGE 5 – HDD 131 EXIT PITS
SCALE: 1" = 50'

NOTES:

1. POSTED SPEED LIMIT ON ROUTE 9W = 30MPH
2. FOR SIDEWALK AND PEDESTRIAN DETOUR SEE DWG. NO. 0-804.
3. FOR HDD 131 PULLBACK OPERATION MPT SEE DWG. NO. 0-711
4. ESTIMATED TIME OF COMPLETION FOR HDD 131 IS 64 DAYS.
5. CONTRACTOR MAY CLOSE 1 LANE ON ROUTE 9W DURING NON-PEAK HOURS USING NYS DOT STANDARD SHEET 619-422 FOR THE CONSTRUCTION OF HDD 131.

LEGEND	
	CONSTRUCTION SIGNS
	TYPE III BARRICADE ITEM 619.04
	WORK ZONE
	DIRECTION OF TRAFFIC
	CHANNELIZING DEVICE ITEM 619.07010001



IT IS A VIOLATION OF LAW FOR ANY PERSON, UNLESS THEY ARE ACTING UNDER THE DIRECTION OF A LICENSED PROFESSIONAL ENGINEER, ARCHITECT, LANDSCAPE ARCHITECT OR LAND SURVEYOR TO ALTER AN ITEM IN ANY WAY. IF AN ITEM BEARING THE STAMP OF A LICENSED PROFESSIONAL IS ALTERED, THE ALTERING ENGINEER, ARCHITECT, LANDSCAPE ARCHITECT OR LAND SURVEYOR SHALL STAMP THE DOCUMENT AND INCLUDE THE NOTATION "ALTERED BY" FOLLOWED BY THEIR SIGNATURE, THE DATE OF SUCH ALTERATION, AND A SPECIFIC DESCRIPTION OF THE ALTERATION.

No.	DATE	SUBMITTAL / REVISION DESCRIPTION	DB	APP
1	12/22/2023	NDC-0030: NYS DOT R8 DIRECTED CHANGES	MS	SB
0	07/20/2023	ISSUED FOR CONSTRUCTION SUBMISSION	MS	SB

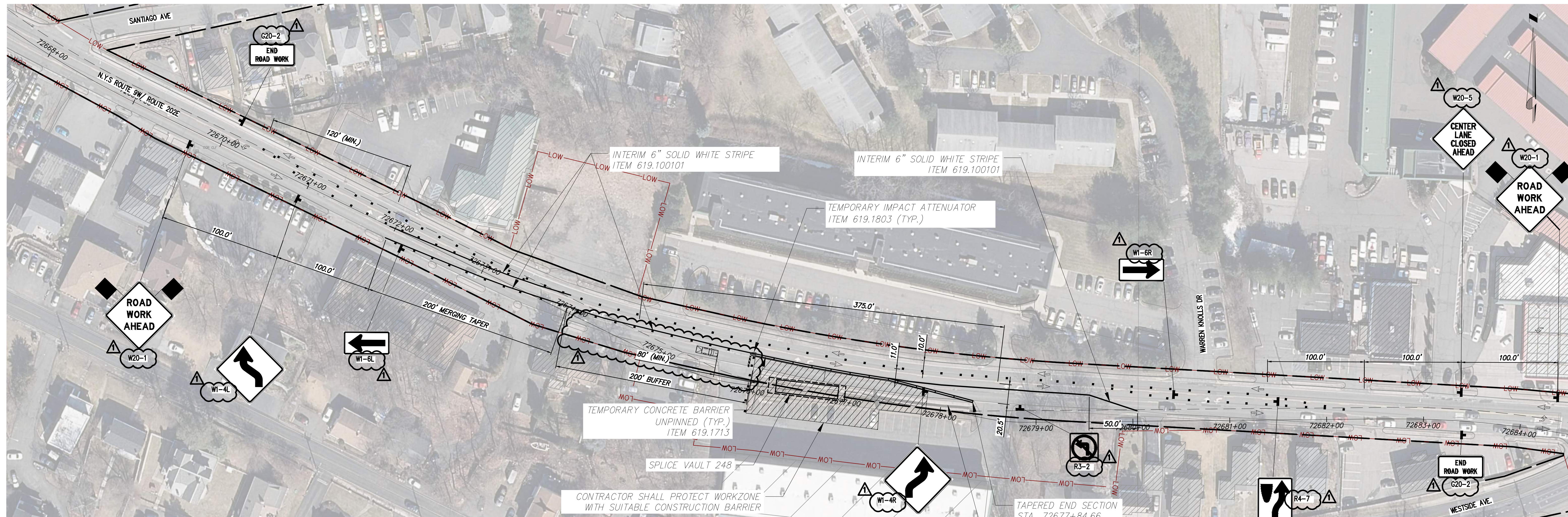
**CHAMPLAIN HUDSON POWER EXPRESS
SEGMENT 12 (PACKAGE 7B) - ROUTE 9W: ROCKLAND**
WORK ZONE TRAFFIC CONTROL DETAILS
HDD 131 EXIT PITS

DRAWN BY: MS DESIGNED BY: MS APPROVED BY: SB SCALE AS SHOWN DATE: 07/20/2023

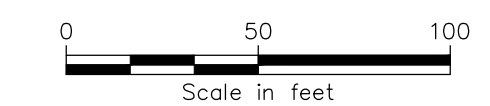
PERMIT DRAWING NO.	N/A
DRAWING NO.	0-714

A

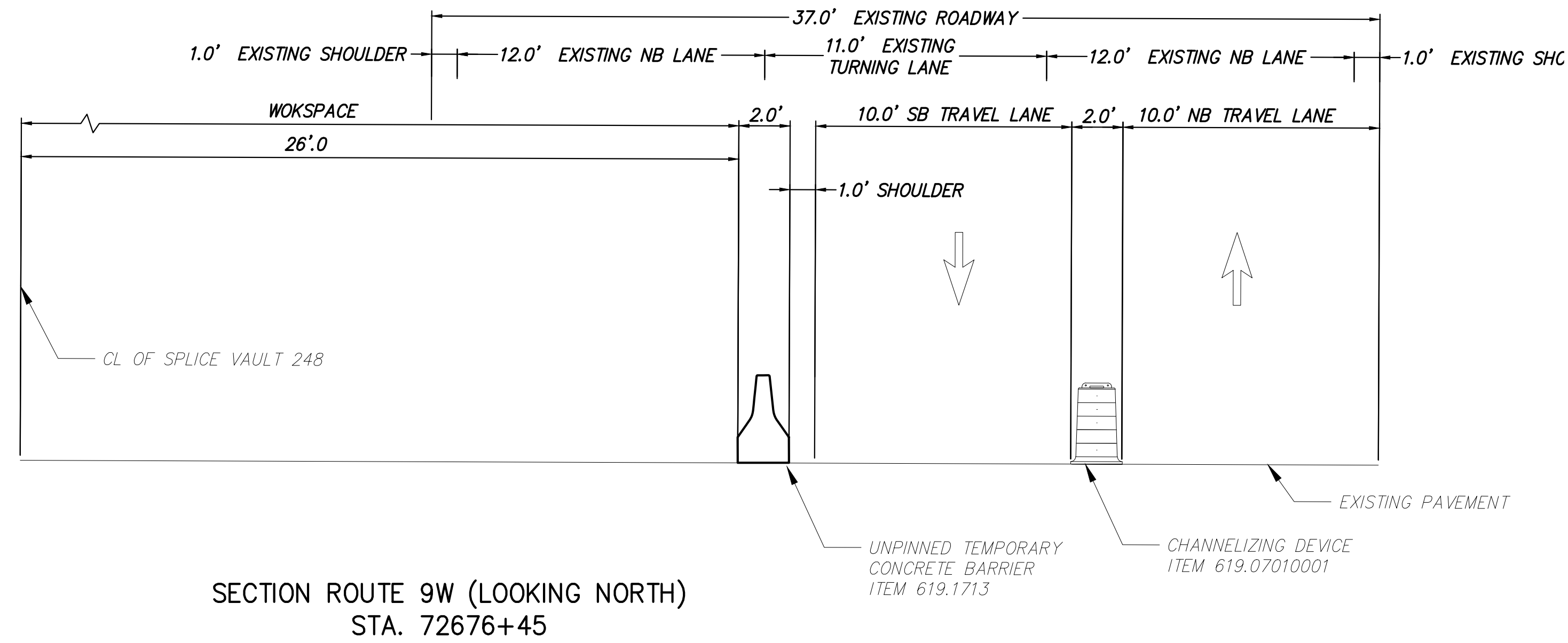
B



STAGE 5 - SPLICE VAULT 248
SCALE: 1" = 50'

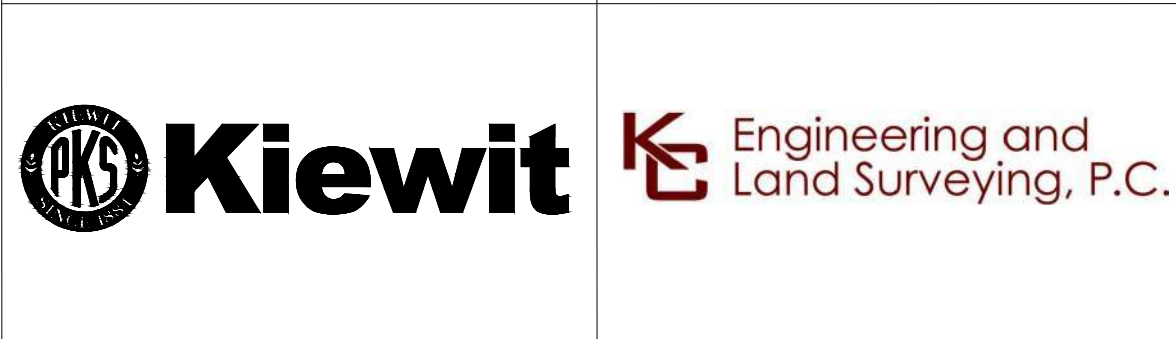


- NOTES:**
1. POSTED SPEED LIMIT ON ROUTE 9W = 30MPH
 2. FOR ADDITIONAL DETAILS AND REQUIREMENTS SEE NYS DOT STANDARD SHEET 619-422.
 3. FOR SIDEWALK AND PEDESTRIAN DETOUR SEE DWG. NO. O-804.
 4. CONTRACTOR SHALL MAINTAIN ACCESS TO ALL BUSINESS AT ALL TIMES.
 5. WORKZONE SHALL BE ACTIVE FOR LONGER THAN 3 DAYS.
 6. DEPENDING ON SITE CONDITIONS THE CONTRACTOR MAY USE A LIGHT PROTECTIVE VEHICLE (9,500 LBS MIN.) WITH THE CORRESPONDING ROLL AHEAD DISTANCE PER NYS DOT STANDARD SHEET 619-422.



SECTION ROUTE 9W (LOOKING NORTH)
STA. 72676+45

LEGEND	
	CONSTRUCTION SIGNS
	TYPE III BARRICADE ITEM 619.04
	WORK ZONE
	DIRECTION OF TRAFFIC
	CHANNELIZING DEVICE ITEM 619.07010001
	TEMPORARY CONCRETE BARRIER ITEM 619.17XX
	22,000 LBS MIN. PROTECTIVE VEHICLE WITH TRUCK/TRAILER MOUNTED ATTENUATOR (TMA), CAUTION MODE



IT IS A VIOLATION OF LAW FOR ANY PERSON, UNLESS THEY ARE ACTING UNDER THE DIRECTION OF A LICENSED PROFESSIONAL ENGINEER, ARCHITECT, LANDSCAPE ARCHITECT OR LAND SURVEYOR TO ALTER AN ITEM IN ANY WAY. IF AN ITEM BEARING THE STAMP OF A LICENSED PROFESSIONAL IS ALTERED, THE ALTERING ENGINEER, ARCHITECT, LANDSCAPE ARCHITECT OR LAND SURVEYOR SHALL STAMP THE DOCUMENT AND INCLUDE THE NOTATION "ALTERED BY" FOLLOWED BY THEIR SIGNATURE, THE DATE OF SUCH ALTERATION, AND A SPECIFIC DESCRIPTION OF THE ALTERATION.

No.	DATE	SUBMITTAL / REVISION DESCRIPTION	DB	APP
1	12/22/2023	NDC-0030: NYS DOT R8 DIRECTED CHANGES	MS	SB
0	07/20/2023	ISSUED FOR CONSTRUCTION SUBMISSION	MS	SB

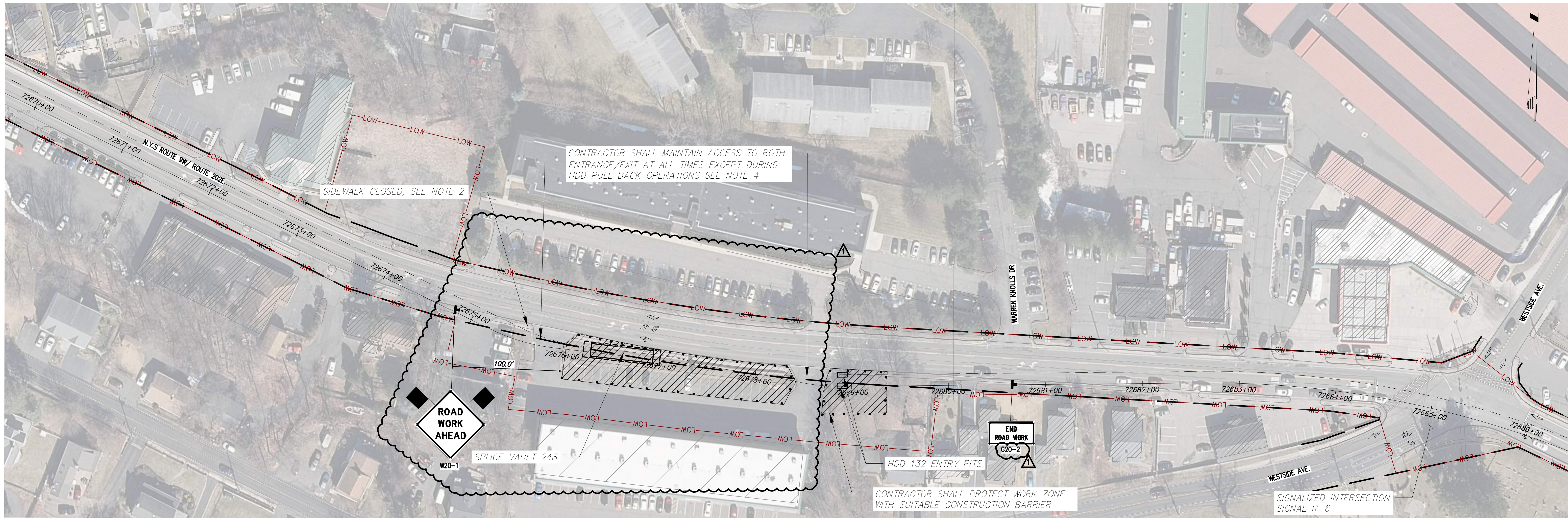
CHAMPLAIN HUDSON POWER EXPRESS
SEGMENT 12 (PACKAGE 7B) - ROUTE 9W: ROCKLAND
WORK ZONE TRAFFIC CONTROL DETAILS
SPLICE VAULT 248

DRAWN BY: MS DESIGNED BY: MS APPROVED BY: SB
SCALE AS SHOWN
DATE: 07/20/2023

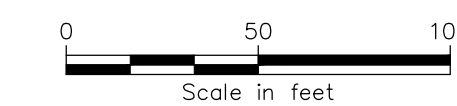
PERMIT DRAWING NO.
N/A

DRAWING NO.
0-716

File: P:\202074-CHPE_INSTALL-CABLE_INSTALL-ENGINEERING_CAD_FILES\PACKAGE_7B_NY_TRAFFIC_SAFETY\01_KCE\SHEET_FILES\2023.12.06.DPE_REV\21162_7B_O_804.DWG Saved: 12/20/2023 3:46:03 PM Current User: Manmy Sharma Last Saved By: msharma



STAGE 5 - HDD 132 ENTRY PITS
SCALE: 1" = 50'



NOTES:

1. POSTED SPEED LIMIT ON ROUTE 9W = 30MPH
2. FOR SIDEWALK AND PEDESTRIAN DETOUR SEE DWG. NO. 0-804.
3. ESTIMATED TIME OF COMPLETION FOR HDD 132 IS 66 DAYS.
4. FOR HDD 132 PULLBACK OPERATIONS CONTRACTOR SHALL CLOSE BOTH ENTRANCE/EXIT OF THE PARKING LOT FOR 2-3 DAYS, PER BORE.

LEGEND	
	CONSTRUCTION SIGNS
	TYPE III BARRICADE ITEM 619.04
	WORK ZONE
	DIRECTION OF TRAFFIC
	CHANNELIZING DEVICE ITEM 619.07010001



Engineering and Land Surveying, P.C.



IT IS A VIOLATION OF LAW FOR ANY PERSON, UNLESS THEY ARE ACTING UNDER THE DIRECTION OF A LICENSED PROFESSIONAL ENGINEER, ARCHITECT, LANDSCAPE ARCHITECT OR LAND SURVEYOR TO ALTER AN ITEM IN ANY WAY. IF AN ITEM BEARING THE STAMP OF A LICENSED PROFESSIONAL IS ALTERED, THE ALTERING ENGINEER, ARCHITECT, LANDSCAPE ARCHITECT OR LAND SURVEYOR SHALL STAMP THE DOCUMENT AND INCLUDE THE NOTATION "ALTERED BY" FOLLOWED BY THEIR SIGNATURE, THE DATE OF SUCH ALTERATION, AND A SPECIFIC DESCRIPTION OF THE ALTERATION.

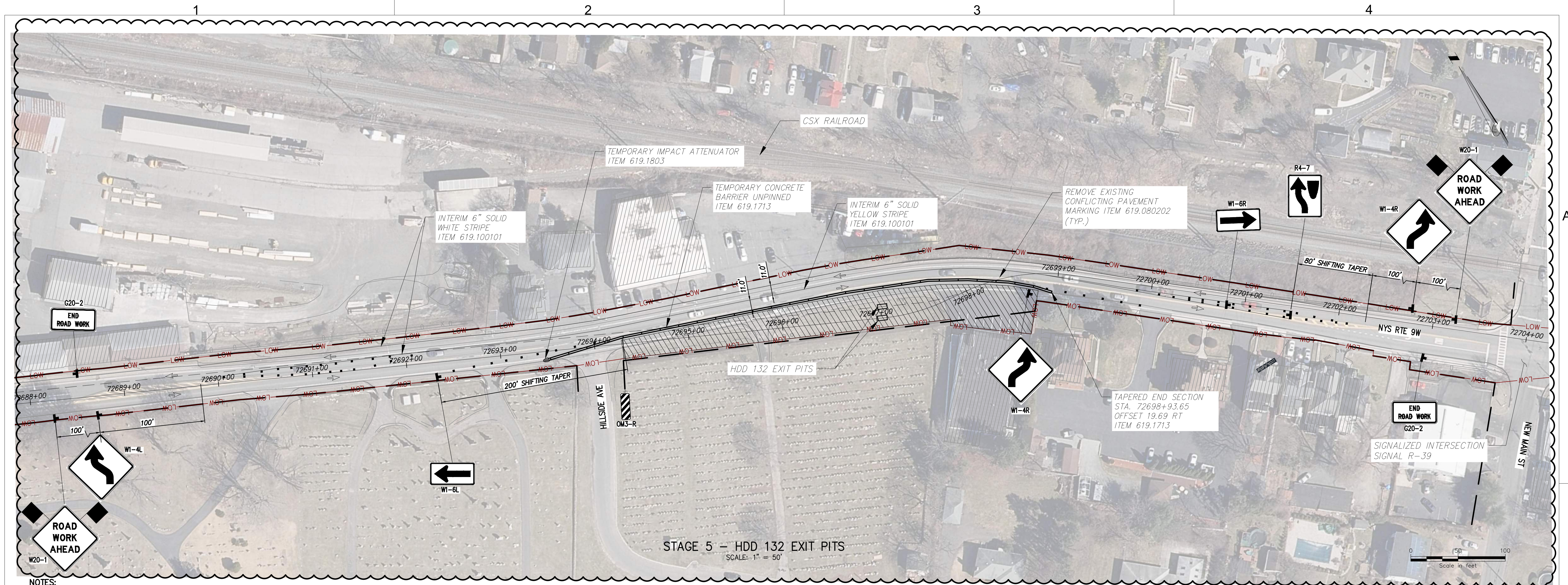
No.	DATE	SUBMITTAL / REVISION DESCRIPTION	DB	APP
1	12/22/2023	NDC-0030: NYSDOT R8 DIRECTED CHANGES	MS	SB
0	07/20/2023	ISSUED FOR CONSTRUCTION SUBMISSION	MS	SB

CHAMPLAIN HUDSON POWER EXPRESS
SEGMENT 12 (PACKAGE 7B) - ROUTE 9W: ROCKLAND
WORK ZONE TRAFFIC CONTROL DETAILS
HDD 132 ENTRY PITS

PERMIT DRAWING NO.
N/A
DRAWING NO.
0-717

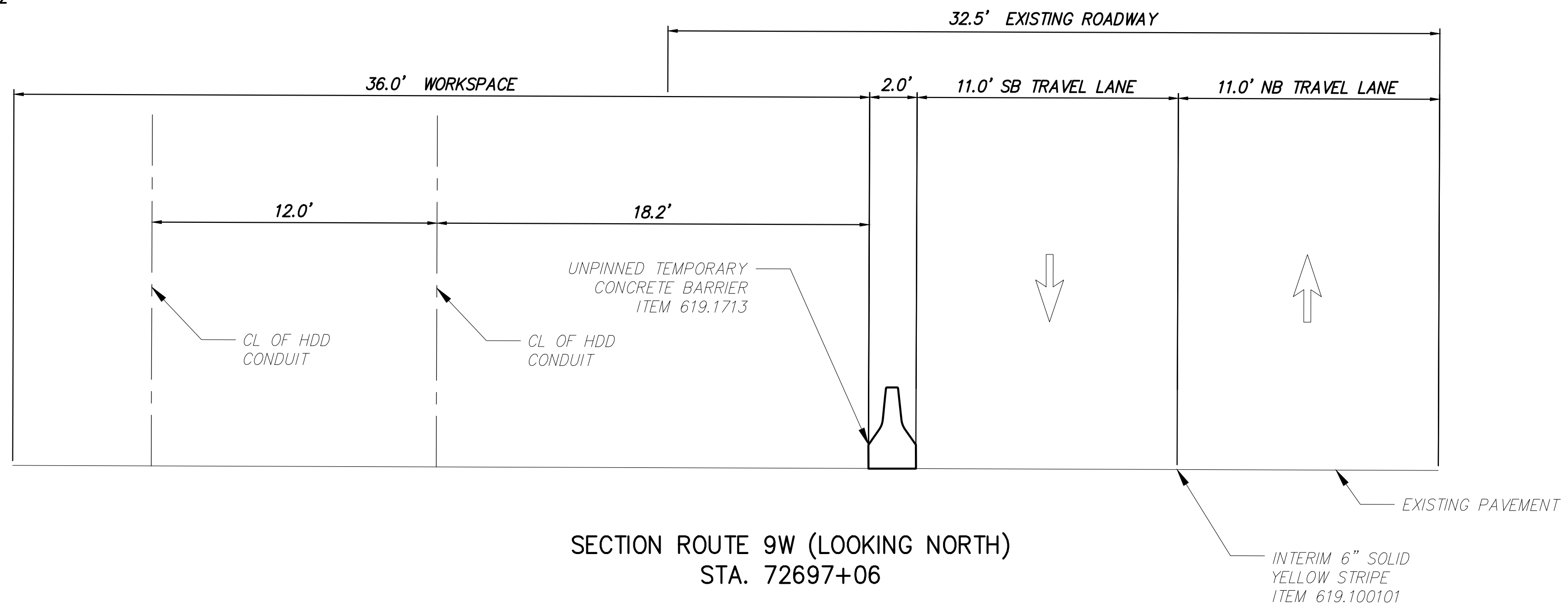
DRAWN BY: MS DESIGNED BY: MS APPROVED BY: SB SCALE AS SHOWN DATE: 07/20/2023

File: F:\120174-CHPE-CABLE-INSTALL-KEWIT\60_CAD\20_ENGINEERING_CAD_FILES\PACKAGE_7B_NY_TRAFFIC_SAFETY\01_KCE\SHEET_FILES\2023.12.06.DPS\FILES\2023.12.06.DPS_ENTRY.DWG Saved: 12/20/2023 12:21:53 PM Plotted: 12/20/2023 3:40:43 PM Current User: Mamy Sharma



- NOTES:**
1. POSTED SPEED LIMIT ON ROUTE 9W = 30MPH
 2. FOR ADDITIONAL DETAILS AND REQUIREMENTS SEE NYSDOT STANDARD SHEET 619-422
 3. ESTIMATED TIME OF COMPLETION FOR HDD 132 IS 75 DAYS.

LEGEND	
	CONSTRUCTION SIGNS
	TYPE III BARRICADE ITEM 619.04
	WORK ZONE
	DIRECTION OF TRAFFIC
	CHANNELIZING DEVICE ITEM 619.07010001
	TEMPORARY CONCRETE BARRIER ITEM 619.17XX



SECTION ROUTE 9W (LOOKING NORTH)
STA. 72697+06



PROJECT NO.: 21162

PROJECT NO.: 120174

ALTERED ON:

AFFIXED ON: 12/22/2023

Engineering and Land Surveying, P.C.

IT IS A VIOLATION OF LAW FOR ANY PERSON, UNLESS THEY ARE ACTING UNDER THE DIRECTION OF A LICENSED PROFESSIONAL ENGINEER, ARCHITECT, LANDSCAPE ARCHITECT OR LAND SURVEYOR TO ALTER AN ITEM IN ANY WAY. IF AN ITEM BEARING THE STAMP OF A LICENSED PROFESSIONAL IS ALTERED, THE ALTERING ENGINEER, ARCHITECT, LANDSCAPE ARCHITECT OR LAND SURVEYOR SHALL STAMP THE DOCUMENT AND INCLUDE THE NOTATION "ALTERED BY" FOLLOWED BY THEIR SIGNATURE, THE DATE OF SUCH ALTERATION, AND A SPECIFIC DESCRIPTION OF THE ALTERATION.

No.	DATE	SUBMITTAL / REVISION DESCRIPTION	DB	APP
1	12/22/2023	NDC-0030: NYSDOT R8 DIRECTED CHANGES	MS	SB
0	07/20/2023	ISSUED FOR CONSTRUCTION SUBMISSION	MS	SB

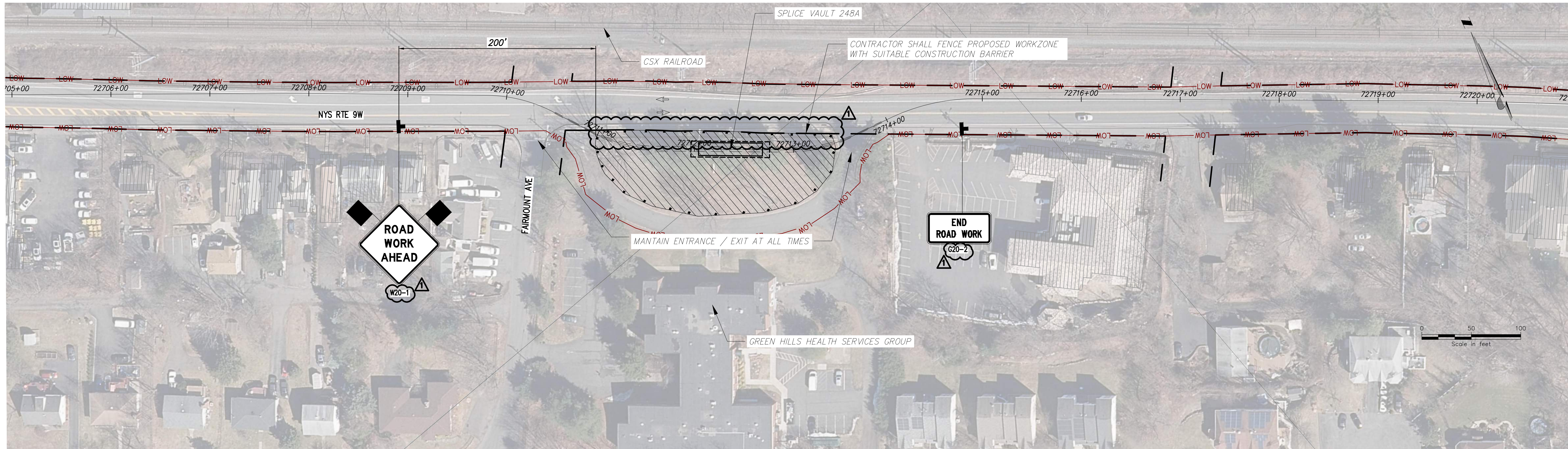
CHAMPLAIN HUDSON POWER EXPRESS
SEGMENT 12 (PACKAGE 7B) - ROUTE 9W: ROCKLAND

WORK ZONE TRAFFIC CONTROL DETAILS
HDD 132 EXIT PITS

DRAWN BY: MS DESIGNED BY: MS APPROVED BY: SB

SCALE AS SHOWN
DATE: 07/20/2023

PERMIT DRAWING NO.	N/A
DRAWING NO.	0-718



STAGE 4 – SPLICE VAULT 248A PLAN VIEW
SCALE: 1" = 50'

LEGEND	
	CONSTRUCTION SIGNS
	TYPE III BARRICADE ITEM 619.04
	WORK ZONE
	DIRECTION OF TRAFFIC
	CHANNELIZING DEVICE ITEM 619.07010001
	TEMPORARY CONCRETE BARRIER ITEM 619.17XX

- NOTES:
1. POSTED SPEED LIMIT ON ROUTE 9W = 40 MPH
 2. WORKZONE SHALL BE ACTIVE FOR LONGER THAN 3 DAYS
 3. SEE NYSOT STANDARD SPECIFICATION 619-080 FOR ADDITIONAL REQUIREMENTS.



Engineering and
Land Surveying, P.C.



IT IS A VIOLATION OF LAW FOR ANY PERSON, UNLESS THEY ARE ACTING UNDER THE DIRECTION OF A LICENSED PROFESSIONAL ENGINEER, ARCHITECT, LANDSCAPE ARCHITECT OR LAND SURVEYOR TO ALTER AN ITEM IN ANY WAY. IF AN ITEM BEARING THE STAMP OF A LICENSED PROFESSIONAL IS ALTERED, THE ALTERING ENGINEER, ARCHITECT, LANDSCAPE ARCHITECT OR LAND SURVEYOR SHALL STAMP THE DOCUMENT AND INCLUDE THE NOTATION "ALTERED BY" FOLLOWED BY THEIR SIGNATURE, THE DATE OF SUCH ALTERATION, AND A SPECIFIC DESCRIPTION OF THE ALTERATION.

No.	DATE	SUBMITTAL / REVISION DESCRIPTION	DB	APP
1	12/22/2023	NDC-0030: NYSOT R8 DIRECTED CHANGES	MS	SB
0	07/20/2023	ISSUED FOR CONSTRUCTION SUBMISSION	MS	SB

CHAMPLAIN HUDSON POWER EXPRESS
SEGMENT 12 (PACKAGE 7B) - ROUTE 9W: ROCKLAND
WORK ZONE TRAFFIC CONTROL DETAIL
SPLICE VAULT 248A

DRAWN BY: MS DESIGNED BY: MS APPROVED BY: SB SCALE AS SHOWN DATE: 07/20/2023

PERMIT DRAWING NO.

N/A

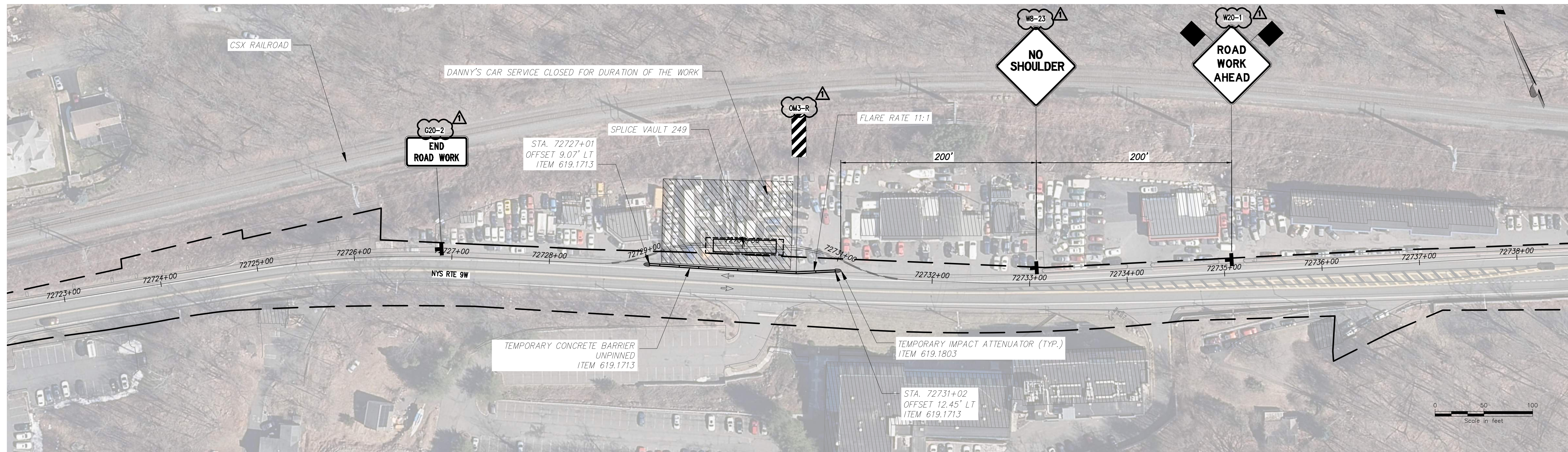
DRAWING NO.

0-719

A

B

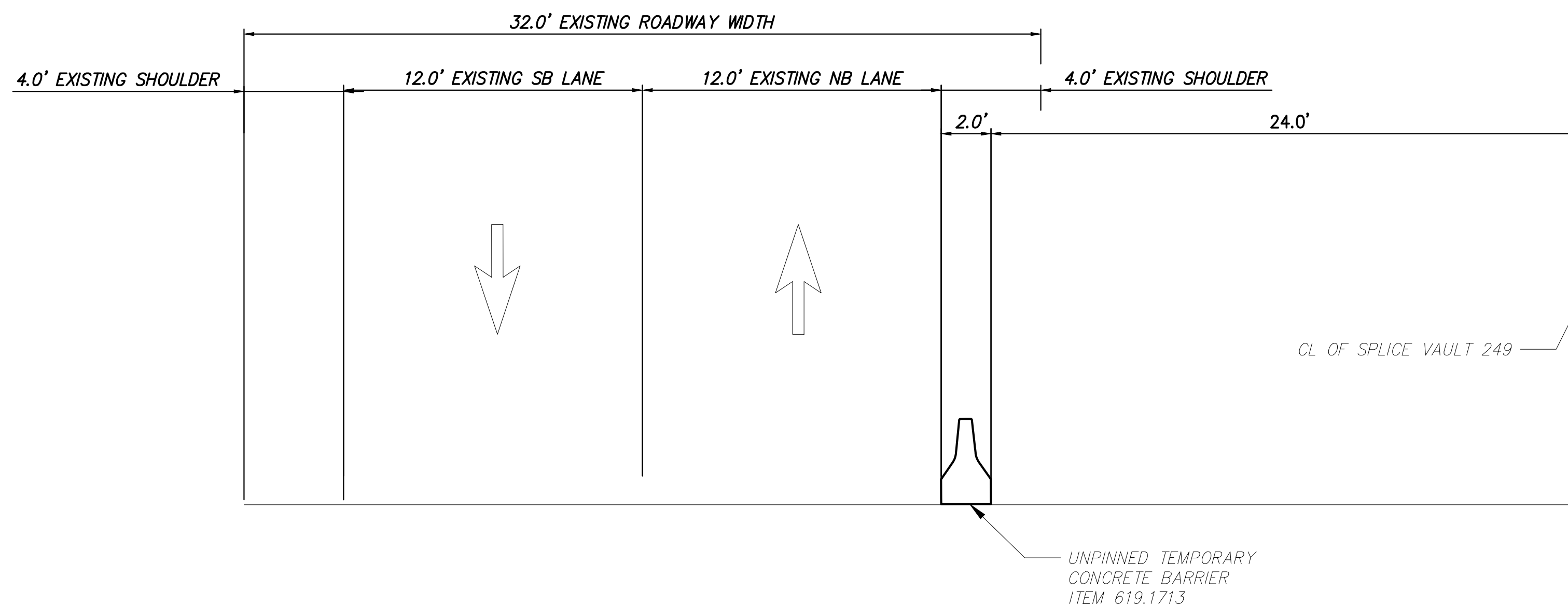
File: P:\20174-CHPE_INSTALL-INSTALL-CABLE_PACKAGE_7B_NY_TRAFFIC_SAFETY\01_KCE_SHEET_FILES\2023\12.06.DPS_REV\21162_7B_0_719_SV248A.DWG Saved: 12/20/2023 2:57:27 PM Plotted: 12/20/2023 3:42:39 PM Current User: Manny Sharma LastSavedBy: msharma



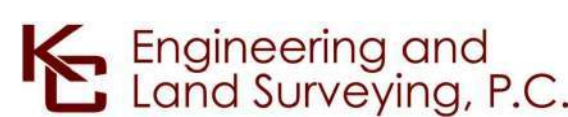
STAGE 4 – SPLICE VAULT 249 PLAN VIEW
SCALE: 1" = 50'

- NOTES:
1. POSTED SPEED LIMIT ON ROUTE 9W = 40 MPH
 2. WORKZONE SHALL BE ACTIVE FOR LONGER THAN 3 DAYS, SEE NYSDOT STANDARD SHEET 619-501 & 619-410 FOR ADDITIONAL REQUIREMENTS

LEGEND	
	CONSTRUCTION SIGNS
	TYPE III BARRICADE ITEM 619.04
	WORK ZONE
	DIRECTION OF TRAFFIC
	CHANNELIZING DEVICE ITEM 619.07010001
	TEMPORARY CONCRETE BARRIER ITEM 619.17XX



SPLICE VAULT 249 TRENCH SECTION ROUTE 9W (LOOKING NORTH)
STA. 72730+00



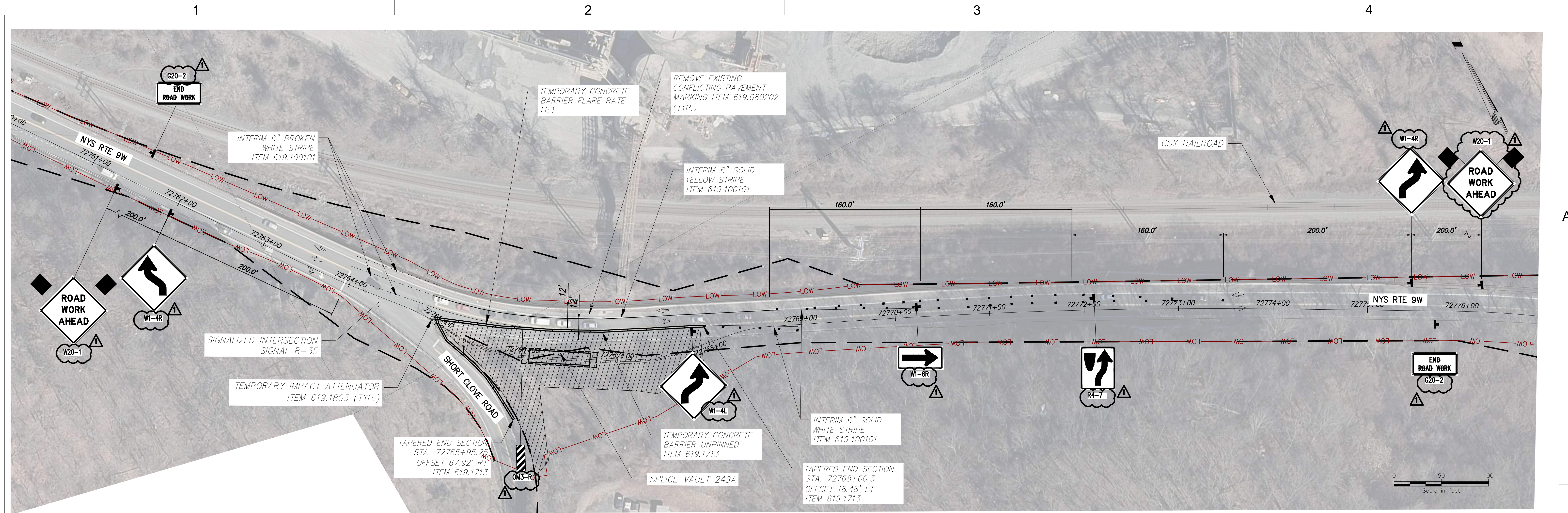
IT IS A VIOLATION OF LAW FOR ANY PERSON, UNLESS THEY ARE ACTING UNDER THE DIRECTION OF A LICENSED PROFESSIONAL ENGINEER, ARCHITECT, LANDSCAPE ARCHITECT OR LAND SURVEYOR TO ALTER AN ITEM IN ANY WAY. IF AN ITEM BEARING THE STAMP OF A LICENSED PROFESSIONAL IS ALTERED, THE ALTERING ENGINEER, ARCHITECT, LANDSCAPE ARCHITECT OR LAND SURVEYOR SHALL STAMP THE DOCUMENT AND INCLUDE THE NOTATION "ALTERED BY" FOLLOWED BY THEIR SIGNATURE, THE DATE OF SUCH ALTERATION, AND A SPECIFIC DESCRIPTION OF THE ALTERATION.

No.	DATE	SUBMITTAL / REVISION DESCRIPTION	DB	APP
1	12/22/2023	NDC-0030: NYSDOT R8 DIRECTED CHANGES	MS	SB
0	07/20/2023	ISSUED FOR CONSTRUCTION SUBMISSION	MS	SB

CHAMPLAIN HUDSON POWER EXPRESS
SEGMENT 12 (PACKAGE 7B) - ROUTE 9W: ROCKLAND
WORK ZONE TRAFFIC CONTROL DETAIL
SPLICE VAULT 249

PERMIT DRAWING NO.	N/A
DRAWING NO.	0-720

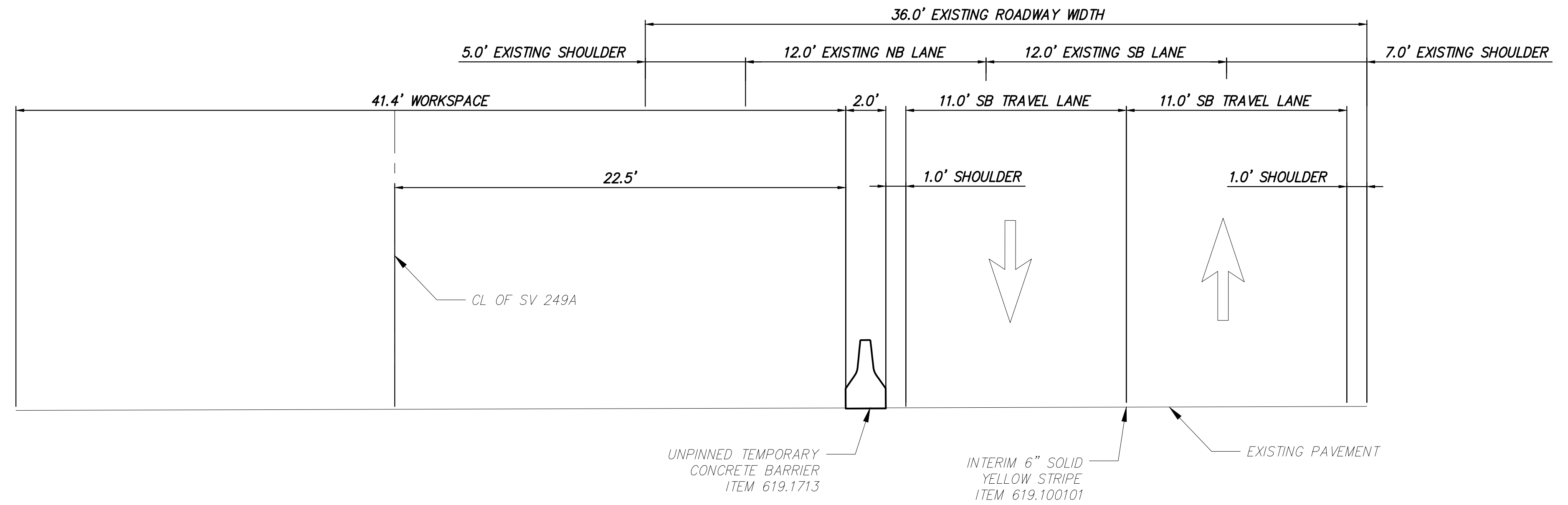
DRAWN BY: MS DESIGNED BY: MS APPROVED BY: SB SCALE AS SHOWN DATE: 07/20/2023



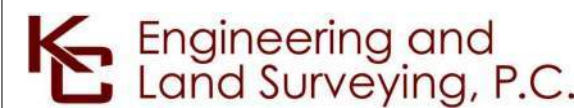
STAGE 3 - SPLICE VAULT 249A PLAN VIEW
SCALE: 1" = 50'

- NOTES:
- POSTED SPEED LIMIT ON SHORT CLOVE RD = 30 MPH
 - POSTED SPEED LIMIT ON ROUTE 9W = 40 MPH
 - WORKZONE SHALL BE ACTIVE FOR LONGER THAN 3 DAYS

LEGEND	
	CONSTRUCTION SIGNS
	TYPE III BARRICADE ITEM 619.04
	WORK ZONE
	DIRECTION OF TRAFFIC
	CHANNELIZING DEVICE ITEM 619.0710001
	TEMPORARY CONCRETE BARRIER ITEM 619.17XX



SPLICE VAULT 249A TRENCH SECTION ROUTE 9W (LOOKING NORTH)
STA. 72766+35



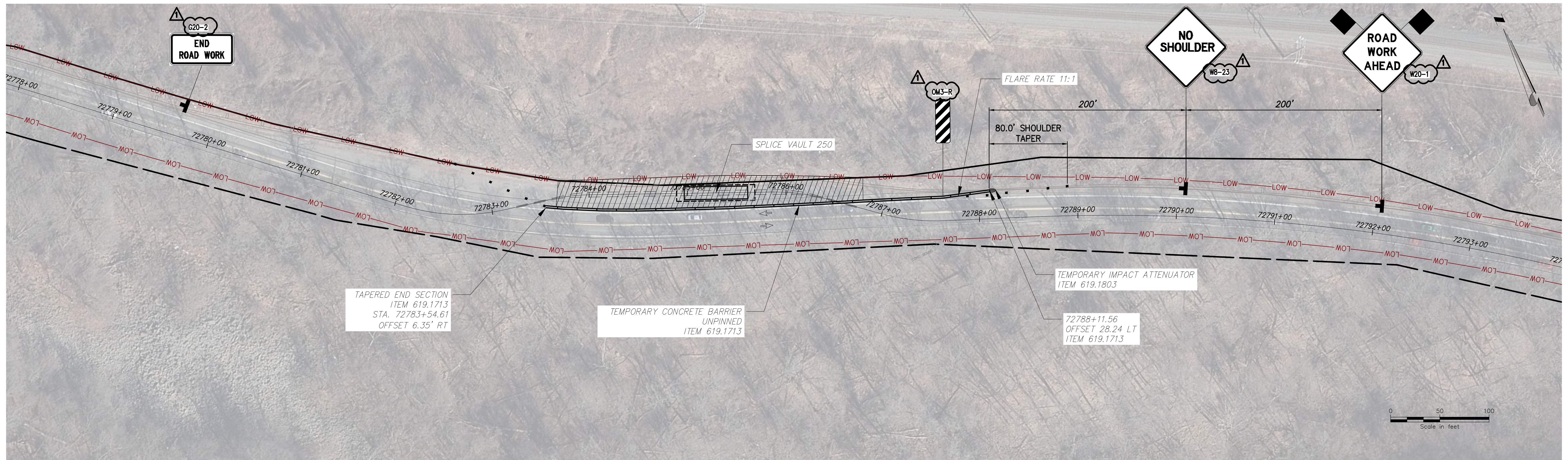
IT IS A VIOLATION OF LAW FOR ANY PERSON, UNLESS THEY ARE ACTING UNDER THE DIRECTION OF A LICENSED PROFESSIONAL ENGINEER, ARCHITECT, LANDSCAPE ARCHITECT OR LAND SURVEYOR TO ALTER AN ITEM IN ANY WAY. IF AN ITEM BEARING THE STAMP OF A LICENSED PROFESSIONAL IS ALTERED, THE ALTERING ENGINEER, ARCHITECT, LANDSCAPE ARCHITECT OR LAND SURVEYOR SHALL STAMP THE DOCUMENT AND INCLUDE THE NOTATION "ALTERED BY" FOLLOWED BY THEIR SIGNATURE, THE DATE OF SUCH ALTERATION, AND A SPECIFIC DESCRIPTION OF THE ALTERATION.

No.	DATE	SUBMITTAL / REVISION DESCRIPTION	DB	APP
1	12/22/2023	NDC-0030: NYSDOT R8 DIRECTED CHANGES	MS	SB
0	07/20/2023	ISSUED FOR CONSTRUCTION SUBMISSION	MS	SB

CHAMPLAIN HUDSON POWER EXPRESS
SEGMENT 12 (PACKAGE 7B) - ROUTE 9W: ROCKLAND
WORK ZONE TRAFFIC CONTROL DETAILS
SPLICE VAULT 249A

PERMIT DRAWING NO.	N/A
DRAWING NO.	0-721

DRAWN BY: MS DESIGNED BY: MS APPROVED BY: SB SCALE AS SHOWN DATE: 07/20/2023



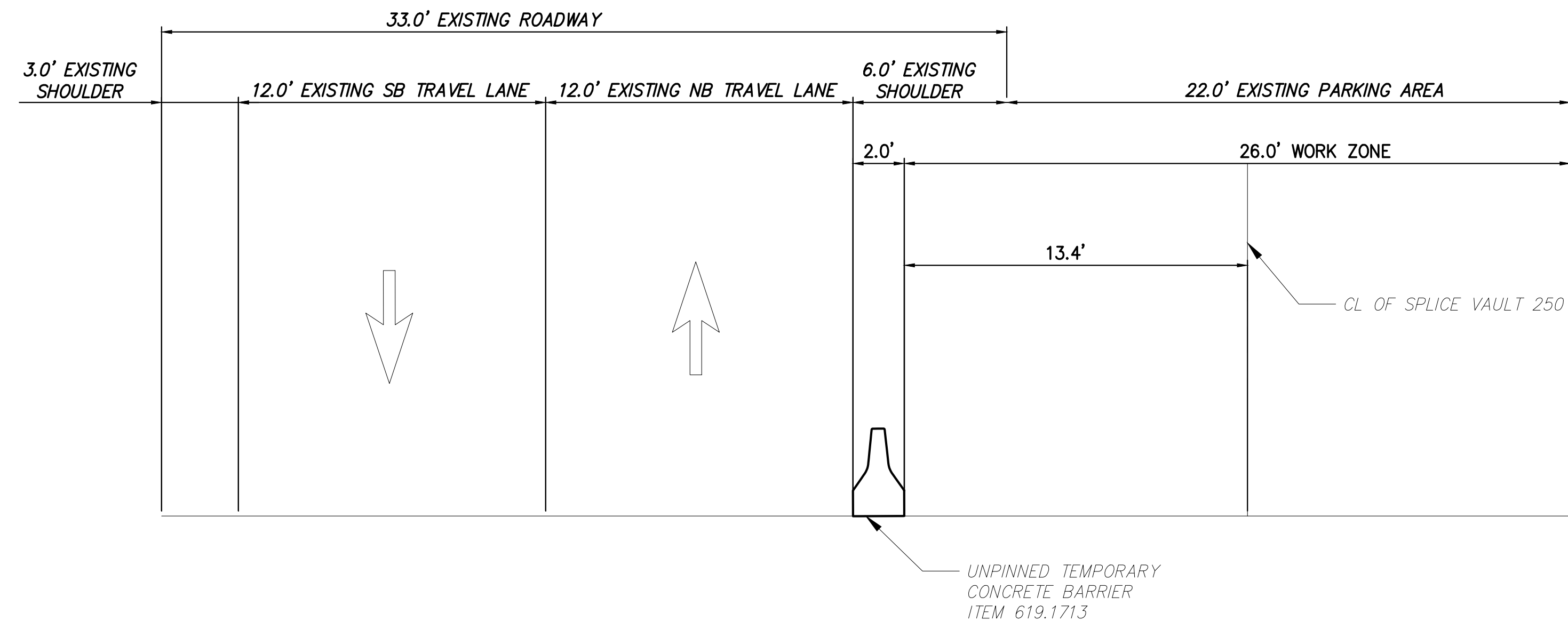
STAGE 3 - SPLICE VAULT 250 PLAN VIEW

SCALE: 1" = 50'

NOTES:

1. POSTED SPEED LIMIT ON ROUTE 9W = 40 MPH
2. WORKZONE SHALL BE ACTIVE FOR LONGER THAN 3 DAYS, SEE NYSDOT STANDARD SHEET 619-501 FOR ADDITIONAL REQUIREMENTS

LEGEND	
	CONSTRUCTION SIGNS
	TYPE III BARRICADE ITEM 619.04
	WORK ZONE
	DIRECTION OF TRAFFIC
	CHANNELIZING DEVICE ITEM 619.07010001
	TEMPORARY CONCRETE BARRIER ITEM 619.17XX



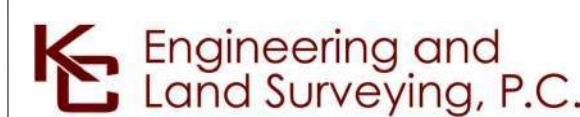
SPLICE VAULT 250 TRENCH SECTION ROUTE 9W (LOOKING NORTH)
STA. 72785+35



PROJECT NO.: 21162



PROJECT NO.: 120174



ALTERED ON:

AFFIXED ON: 12/22/2023



IT IS A VIOLATION OF LAW FOR ANY PERSON, UNLESS THEY ARE ACTING UNDER THE DIRECTION OF A LICENSED PROFESSIONAL ENGINEER, ARCHITECT, LANDSCAPE ARCHITECT OR LAND SURVEYOR TO ALTER AN ITEM IN ANY WAY. IF AN ITEM BEARING THE STAMP OF A LICENSED PROFESSIONAL IS ALTERED, THE ALTERING ENGINEER, ARCHITECT, LANDSCAPE ARCHITECT OR LAND SURVEYOR SHALL STAMP THE DOCUMENT AND INCLUDE THE NOTATION "ALTERED BY" FOLLOWED BY THEIR SIGNATURE, THE DATE OF SUCH ALTERATION, AND A SPECIFIC DESCRIPTION OF THE ALTERATION.

No.	DATE	SUBMITTAL / REVISION DESCRIPTION	DB	APP
1	12/22/2023	NDC-0030: NYSDOT R8 DIRECTED CHANGES	MS	SB
0	07/20/2023	ISSUED FOR CONSTRUCTION SUBMISSION	MS	SB

CHAMPLAIN HUDSON POWER EXPRESS
SEGMENT 12 (PACKAGE 7B) - ROUTE 9W: ROCKLAND
WORK ZONE TRAFFIC CONTROL DETAIL
SPLICE VAULT 250

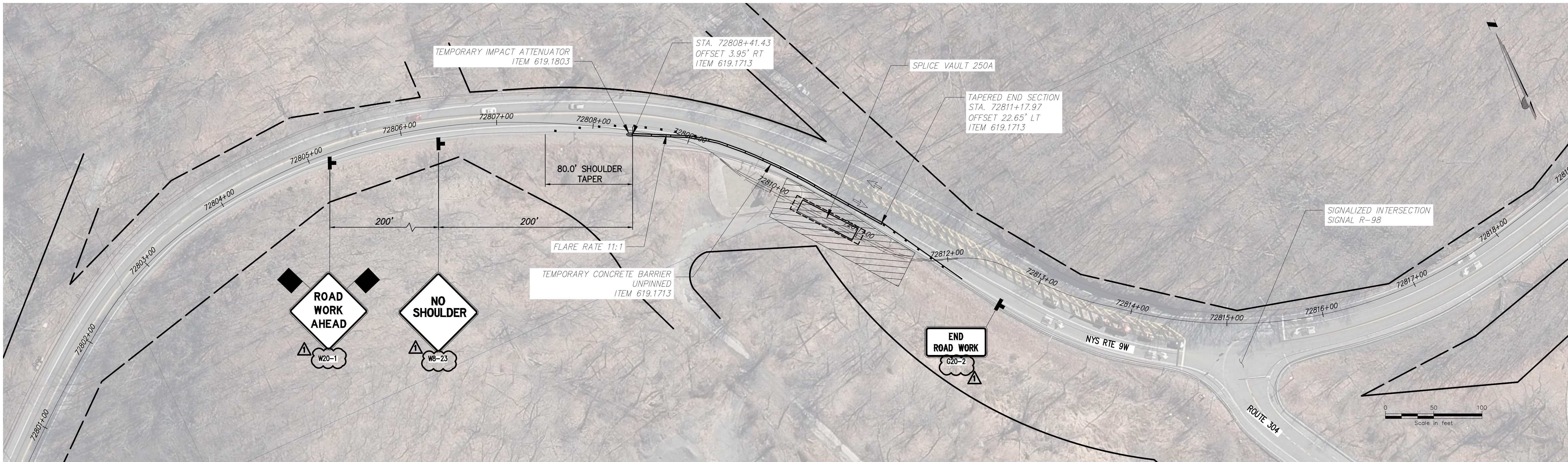
PERMIT DRAWING NO.

N/A

DRAWING NO.

0-722

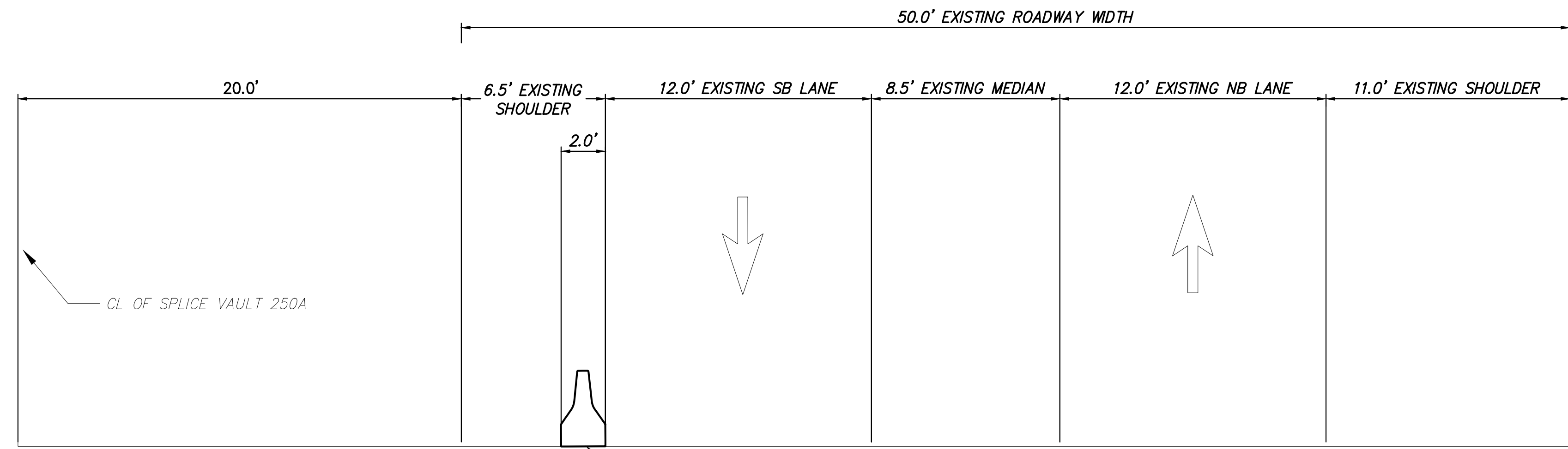
DRAWN BY: MS DESIGNED BY: MS APPROVED BY: SB SCALE AS SHOWN DATE: 07/20/2023



STAGE 3 – SPLICE VAULT 250A PLAN VIEW
SCALE: 1" = 50'

- NOTES:
1. POSTED SPEED LIMIT ON ROUTE 9W = 40 MPH
 2. WORKZONE SHALL BE ACTIVE FOR LONGER THAN 3 DAYS, SEE NYSDOT STANDARD SHEET 619-410 & 619-501 FOR ADDITIONAL REQUIREMENTS

LEGEND	
	CONSTRUCTION SIGNS
	TYPE III BARRICADE ITEM 619.04
	WORK ZONE
	DIRECTION OF TRAFFIC
	CHANNELIZING DEVICE ITEM 619.07010001
	TEMPORARY CONCRETE BARRIER ITEM 619.17XX



SPLICE VAULT 250A TRENCH SECTION ROUTE 9W (LOOKING NORTH)
STA. 72810+70



PROJECT NO.: 21162

PROJECT NO.: 120174

ALTERED ON:

AFFIXED ON: 12/22/2023

Engineering and Land Surveying, P.C.

IT IS A VIOLATION OF LAW FOR ANY PERSON, UNLESS THEY ARE ACTING UNDER THE DIRECTION OF A LICENSED PROFESSIONAL ENGINEER, ARCHITECT, LANDSCAPE ARCHITECT OR LAND SURVEYOR TO ALTER AN ITEM IN ANY WAY. IF AN ITEM BEARING THE STAMP OF A LICENSED PROFESSIONAL IS ALTERED, THE ALTERING ENGINEER, ARCHITECT, LANDSCAPE ARCHITECT OR LAND SURVEYOR SHALL STAMP THE DOCUMENT AND INCLUDE THE NOTATION "ALTERED BY" FOLLOWED BY THEIR SIGNATURE, THE DATE OF SUCH ALTERATION, AND A SPECIFIC DESCRIPTION OF THE ALTERATION.

No.	DATE	SUBMITTAL / REVISION DESCRIPTION	DB	APP
1	12/22/2023	NDC-0030: NYSDOT R8 DIRECTED CHANGES	MS	SB
0	07/20/2023	ISSUED FOR CONSTRUCTION SUBMISSION	MS	SB

CHAMPLAIN HUDSON POWER EXPRESS
SEGMENT 12 (PACKAGE 7B) - ROUTE 9W: ROCKLAND
WORK ZONE TRAFFIC CONTROL DETAIL
SPLICE VAULT 250A

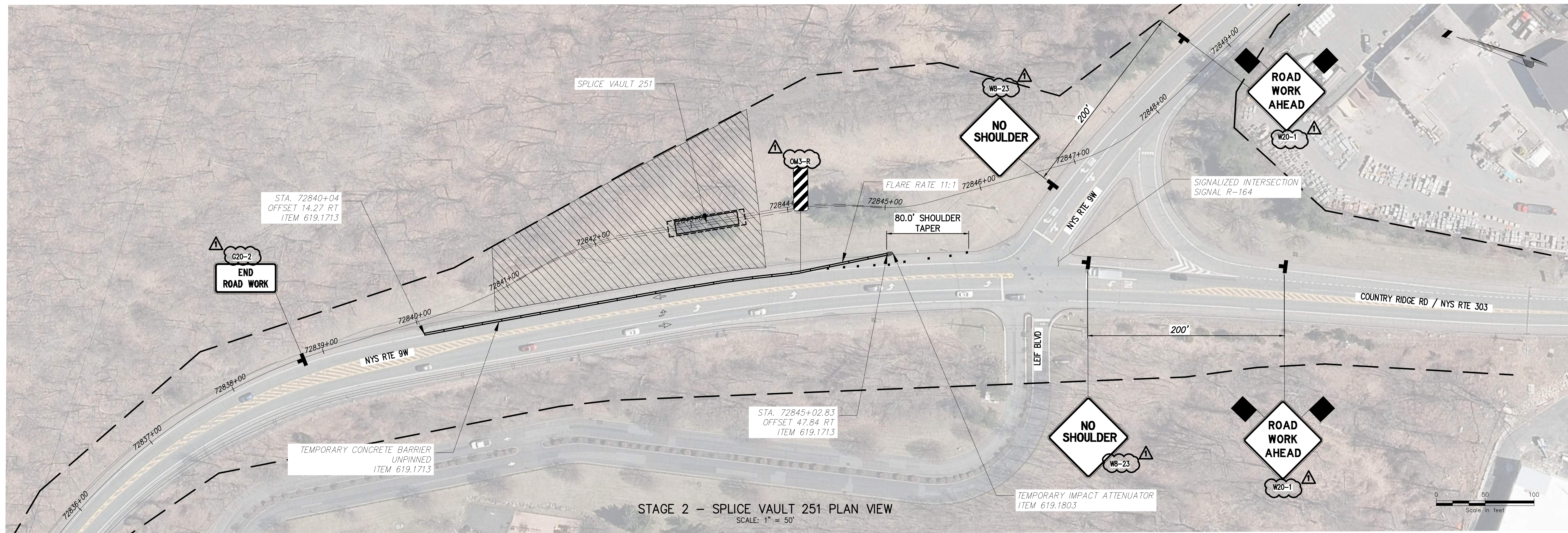
DRAWN BY: MS DESIGNED BY: MS APPROVED BY: SB

SCALE AS SHOWN
DATE: 07/20/2023

PERMIT DRAWING NO. N/A

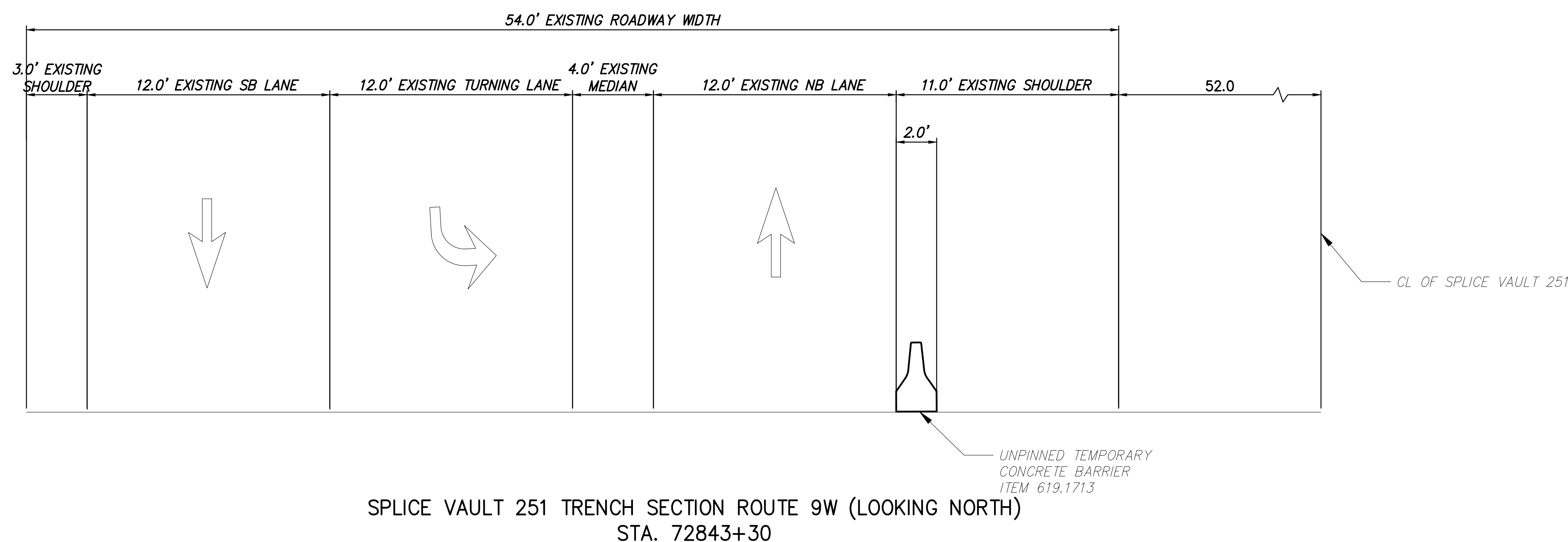
DRAWING NO. 0-723

File: P:\210174-CHPE_INSTALL-INSTALL-FILES\PACKAGE_7B_NY_TRAFFIC_SAFETY\01_KCE_SHEET_FILES\2023\12\06\DP\REV\21162_7B_0_723_SV250A.DWG Saved: 12/20/2023 12:46:36 PM Plotted: 12/20/2023 3:47:02 PM Current User: Mommy Sharma LastSavedBy: msharma



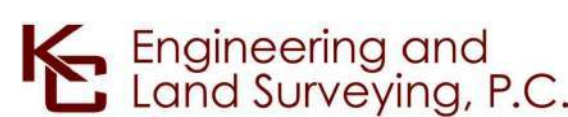
STAGE 2 – SPLICE VAULT 251 PLAN VIEW
SCALE: 1" = 50'

- NOTES:
- POSTED SPEED LIMIT ON ROUTE 9W = 40 MPH
 - WORKZONE SHALL BE ACTIVE FOR LONGER THAN 3 DAYS, SEE NYS DOT STANDARD SHEET 619-501 FOR ADDITIONAL REQUIREMENTS



SPLICE VAULT 251 TRENCH SECTION ROUTE 9W (LOOKING NORTH)
STA. 72843+30

LEGEND	
	CONSTRUCTION SIGNS
	TYPE III BARRICADE ITEM 619.04
	WORK ZONE
	DIRECTION OF TRAFFIC
	CHANNELIZING DEVICE ITEM 619.07010001
	TEMPORARY CONCRETE BARRIER ITEM 619.17XX



IT IS A VIOLATION OF LAW FOR ANY PERSON, UNLESS THEY ARE ACTING UNDER THE DIRECTION OF A LICENSED PROFESSIONAL ENGINEER, ARCHITECT, LANDSCAPE ARCHITECT OR LAND SURVEYOR TO ALTER AN ITEM IN ANY WAY. IF AN ITEM BEARING THE STAMP OF A LICENSED PROFESSIONAL IS ALTERED, THE ALTERING ENGINEER, ARCHITECT, LANDSCAPE ARCHITECT OR LAND SURVEYOR SHALL STAMP THE DOCUMENT AND INCLUDE THE NOTATION "ALTERED BY" FOLLOWED BY THEIR SIGNATURE, THE DATE OF SUCH ALTERATION, AND A SPECIFIC DESCRIPTION OF THE ALTERATION.

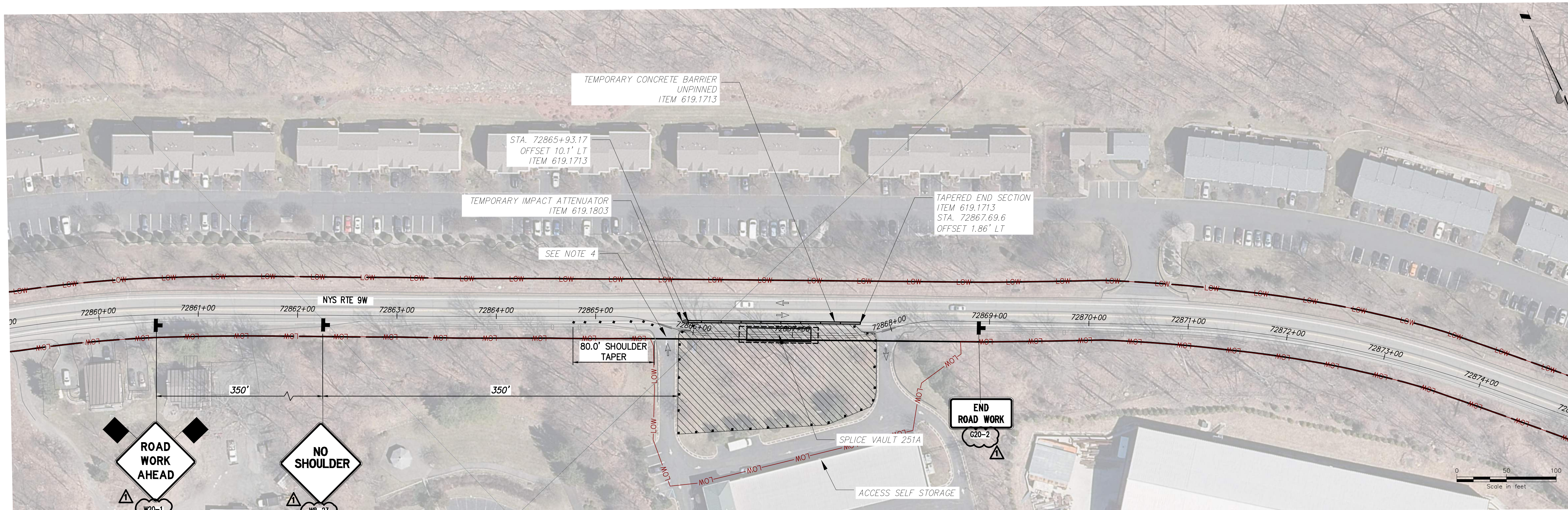
No.	DATE	SUBMITTAL / REVISION DESCRIPTION	DB	APP
1	12/22/2023	NDC-0030: NYS DOT R8 DIRECTED CHANGES	MS	SB
0	07/20/2023	ISSUED FOR CONSTRUCTION SUBMISSION	MS	SB

CHAMPLAIN HUDSON POWER EXPRESS
SEGMENT 12 (PACKAGE 7B) - ROUTE 9W: ROCKLAND
WORK ZONE TRAFFIC CONTROL DETAIL
SPLICE VAULT 251

PERMIT DRAWING NO.
N/A
DRAWING NO.
0-724

DRAWN BY: MS DESIGNED BY: MS APPROVED BY: SB SCALE AS SHOWN DATE: 07/20/2023

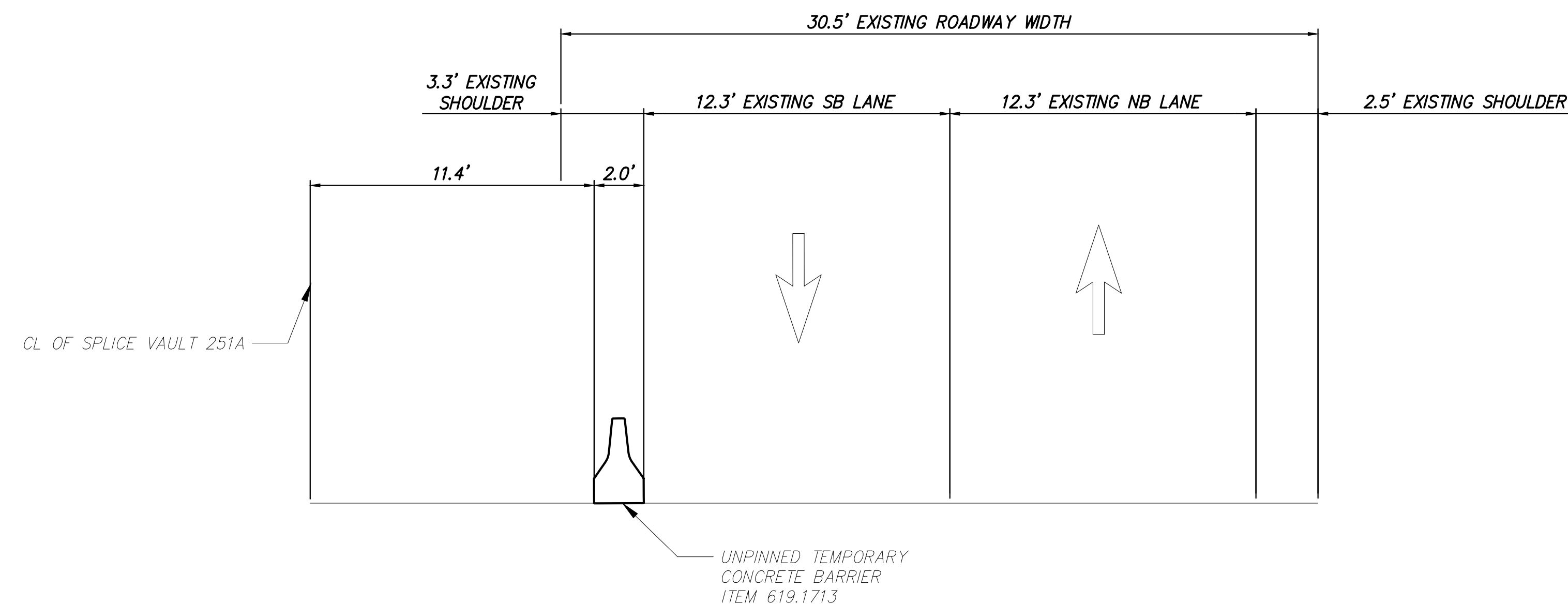
File: P:\210174-CHPE-INSTALL-INSTALL-CABLE-FILES\PACKAGE_7B\NY_TRAFFIC_SAFETY\01_KCE\SHEET_FILES\21162_7B_0_724_SV251.DWG Saved: 12/20/2023 12:58:28 PM Plotted: 12/20/2023 3:48:13 PM Current User: Manish Sharma Last Saved By: msharma



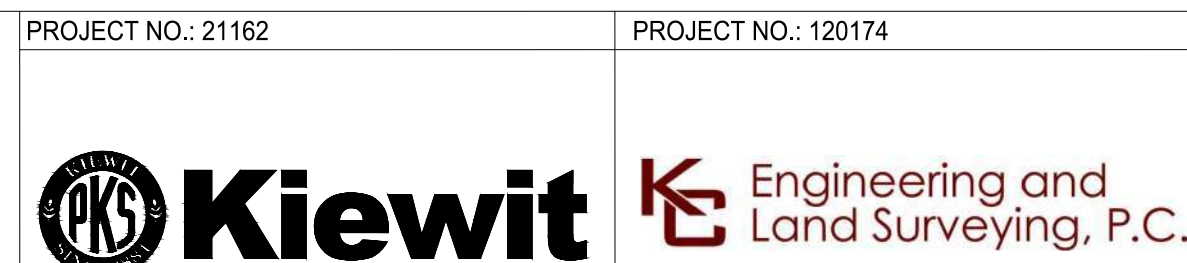
STAGE 1 – SPLICE VAULT 251A PLAN VIEW
SCALE: 1" = 50'

- NOTES:
1. POSTED SPEED LIMIT ON ROUTE 9W = 40 MPH
 2. WORKZONE SHALL BE ACTIVE FOR LONGER THAN 3 DAYS, SEE NYSDOT STANDARD SHEET 619-501 FOR ADDITIONAL REQUIREMENTS
 3. CONTRACTOR SHALL MAINTAIN ENTRANCE / EXIT TO ACCESS SELF STORAGE AT ALL TIMES
 4. TO FACILITATE TRAFFIC THE CONTRACTOR SHALL SWITCH THE EXISTING ENTRANCE AND EXIT OF ACCESS SELF STORAGE IN ORDER TO MAINTAIN ADEQUATE SIGHT DISTANCE FOR EXITING VEHICLES

LEGEND	
	CONSTRUCTION SIGNS
	TYPE III BARRICADE ITEM 619.04
	WORK ZONE
	DIRECTION OF TRAFFIC
	CHANNELIZING DEVICE ITEM 619.07010001
	TEMPORARY CONCRETE BARRIER ITEM 619.17XX



SPLICE VAULT 251A TRENCH SECTION ROUTE 9W (LOOKING NORTH)
STA. 72786+90



IT IS A VIOLATION OF LAW FOR ANY PERSON, UNLESS THEY ARE ACTING UNDER THE DIRECTION OF A LICENSED PROFESSIONAL ENGINEER, ARCHITECT, LANDSCAPE ARCHITECT OR LAND SURVEYOR TO ALTER AN ITEM IN ANY WAY. IF AN ITEM BEARING THE STAMP OF A LICENSED PROFESSIONAL IS ALTERED, THE ALTERING ENGINEER, ARCHITECT, LANDSCAPE ARCHITECT OR LAND SURVEYOR SHALL STAMP THE DOCUMENT AND INCLUDE THE NOTATION "ALTERED BY" FOLLOWED BY THEIR SIGNATURE, THE DATE OF SUCH ALTERATION, AND A SPECIFIC DESCRIPTION OF THE ALTERATION.

No.	DATE	SUBMITTAL / REVISION DESCRIPTION	DB	APP
1	12/22/2023	NDC-0030: NYSDOT R8 DIRECTED CHANGES	MS	SB
0	07/20/2023	ISSUED FOR CONSTRUCTION SUBMISSION	MS	SB

**CHAMPLAIN HUDSON POWER EXPRESS
SEGMENT 12 (PACKAGE 7B) - ROUTE 9W: ROCKLAND**
WORK ZONE TRAFFIC CONTROL DETAIL
SPLICE VAULT 251A

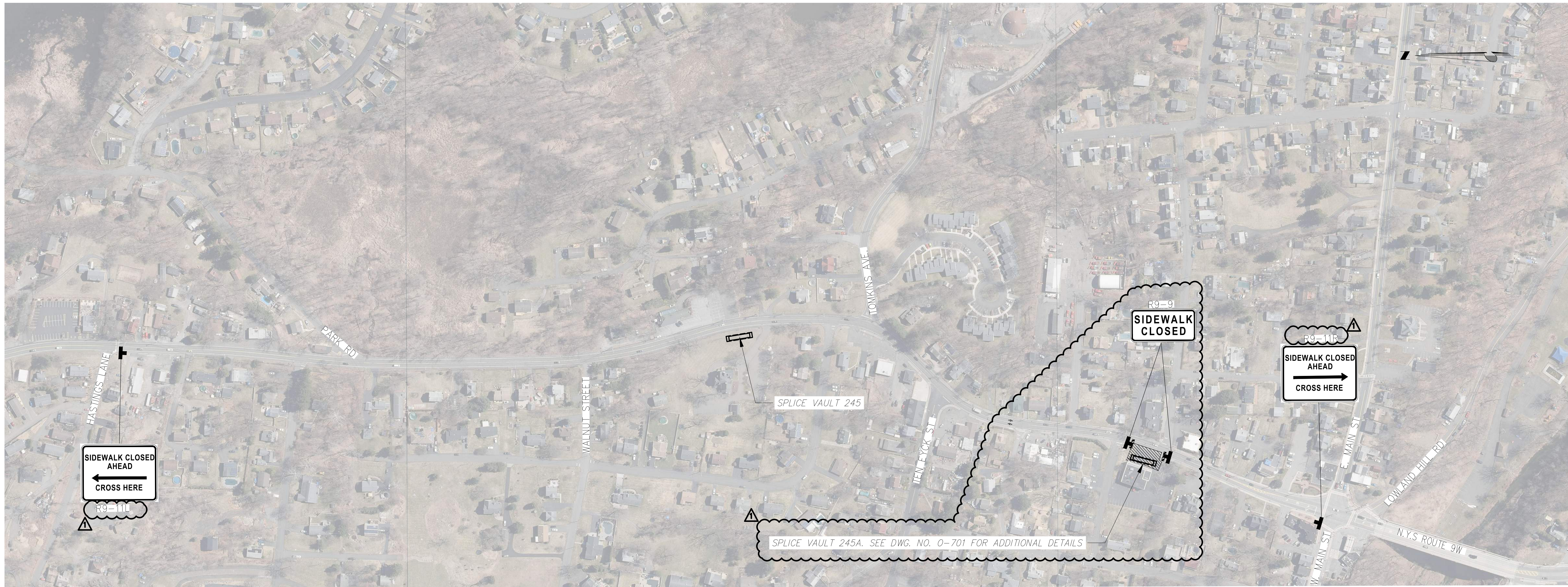
DRAWN BY: MS DESIGNED BY: MS APPROVED BY: SB
SCALE AS SHOWN
DATE: 07/20/2023

PERMIT DRAWING NO.	N/A
DRAWING NO.	0-725

A

B

File: P:\210174-CHPE_INSTALL-INSTALL-CABLE_INSTALL-CABLE_FILES\PACKAGE_7B_NY_TRAFFIC_SAFETY\01_KCE\SHEET_FILES\2023\12\06\DWG\REV\21162_7B_0_725_SV251A.DWG Saved: 12/20/2023 1:05:18 PM Plotted: 12/20/2023 3:49:32 PM Current User: Manny Sharma Last Saved By: msharma



PEDESTRIAN DETOUR SV 245A PLAN VIEW
 SCALE: 1" = 150'

- NOTES:**
- SEE NYSDOT STANDARD SHEET 619-520 FOR ADDITIONAL DETAILS.

LEGEND	
	CONSTRUCTION SIGNS
	TYPE III BARRICADE ITEM 619.04
	WORK ZONE
	DIRECTION OF TRAFFIC
	CHANNELIZING DEVICE ITEM 619.07010001



Engineering and
Land Surveying, P.C.



IT IS A VIOLATION OF LAW FOR ANY PERSON, UNLESS THEY ARE ACTING UNDER THE DIRECTION OF A LICENSED PROFESSIONAL ENGINEER, ARCHITECT, LANDSCAPE ARCHITECT OR LAND SURVEYOR TO ALTER AN ITEM IN ANY WAY. IF AN ITEM BEARING THE STAMP OF A LICENSED PROFESSIONAL IS ALTERED, THE ALTERING ENGINEER, ARCHITECT, LANDSCAPE ARCHITECT OR LAND SURVEYOR SHALL STAMP THE DOCUMENT AND INCLUDE THE NOTATION "ALTERED BY" FOLLOWED BY THEIR SIGNATURE, THE DATE OF SUCH ALTERATION, AND A SPECIFIC DESCRIPTION OF THE ALTERATION.

No.	DATE	SUBMITTAL / REVISION DESCRIPTION	DB	APP
1	12/22/2023	NDC-0021: SV-245A RELOCATION AT LIBERTY BEER	MS	SB
1	12/22/2023	NDC-0030: NYSDOT R8 DIRECTED CHANGES	MS	SB
0	07/20/2023	ISSUED FOR CONSTRUCTION SUBMISSION	MS	SB

CHAMPLAIN HUDSON POWER EXPRESS
 SEGMENT 12 (PACKAGE 7B) - ROUTE 9W: ROCKLAND
 WORK ZONE TRAFFIC CONTROL DETAILS
 PEDESTRIAN DETOUR SV 245A

DRAWN BY: MS DESIGNED BY: MS APPROVED BY: SB SCALE AS SHOWN DATE: 07/20/2023

PERMIT DRAWING NO.
N/A
 DRAWING NO.
O-801

File: P:\210174-CHPE-INSTALL-FILES\ENGINEERING_CAD_FILES\PACKAGE_7B\NY_TRAFFIC_SAFETY\01_KCE\SHEET_FILES\21162_7B_O_801_SV245A_PD.DWG Saved: 12/20/2023 11:12:28 PM Plotted: 12/20/2023 3:50:06 PM Current User: Manny Sharma LastSavedBy: msharma



PEDESTRIAN DETOUR HDD 126 & SV 246 PLAN VIEW
SCALE: 1" = 150'

- NOTES:**
1. SEE NYSDOT STANDARD SHEET 619-520 FOR ADDITIONAL DETAILS.

LEGEND	
	CONSTRUCTION SIGNS
	TYPE III BARRICADE ITEM 619.04
	WORK ZONE
	DIRECTION OF TRAFFIC
	CHANNELIZING DEVICE ITEM 619.07010001



Engineering and Land Surveying, P.C.



IT IS A VIOLATION OF LAW FOR ANY PERSON, UNLESS THEY ARE ACTING UNDER THE DIRECTION OF A LICENSED PROFESSIONAL ENGINEER, ARCHITECT, LANDSCAPE ARCHITECT OR LAND SURVEYOR TO ALTER AN ITEM IN ANY WAY. IF AN ITEM BEARING THE STAMP OF A LICENSED PROFESSIONAL IS ALTERED, THE ALTERING ENGINEER, ARCHITECT, LANDSCAPE ARCHITECT OR LAND SURVEYOR SHALL STAMP THE DOCUMENT AND INCLUDE THE NOTATION "ALTERED BY" FOLLOWED BY THEIR SIGNATURE, THE DATE OF SUCH ALTERATION, AND A SPECIFIC DESCRIPTION OF THE ALTERATION.

No.	DATE	SUBMITTAL / REVISION DESCRIPTION	DB	APP
1	12/22/2023	NDC-0030: NYSDOT R8 DIRECTED CHANGES	MS	SB
0	07/20/2023	ISSUED FOR CONSTRUCTION SUBMISSION	MS	SB

**CHAMPLAIN HUDSON POWER EXPRESS
SEGMENT 12 (PACKAGE 7B) - ROUTE 9W: ROCKLAND**
WORK ZONE TRAFFIC CONTROL DETAILS
PEDESTRIAN DETOUR HDD 126 & SV 246

DRAWN BY: MS DESIGNED BY: MS APPROVED BY: SB SCALE AS SHOWN DATE: 07/20/2023

PERMIT DRAWING NO.
N/A
DRAWING NO.
O-802

File: F:\120174-CHPE-CABLE-INSTALL-INSTALL-CAD\20_ENGINEERING_CAD_FILES\PACKAGE_7B\NY_TRAFFIC_SAFETY\01_KCE\SHEET_FILES\2023.12.06.DPS_REV\21162_7B_O_802_HDD126_SV246_PD.DWG Saved: 12/20/2023 1:50:29 PM Plotted: 12/20/2023 3:50:33 PM Current User: Manny Sharma

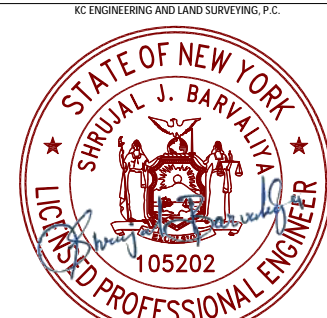
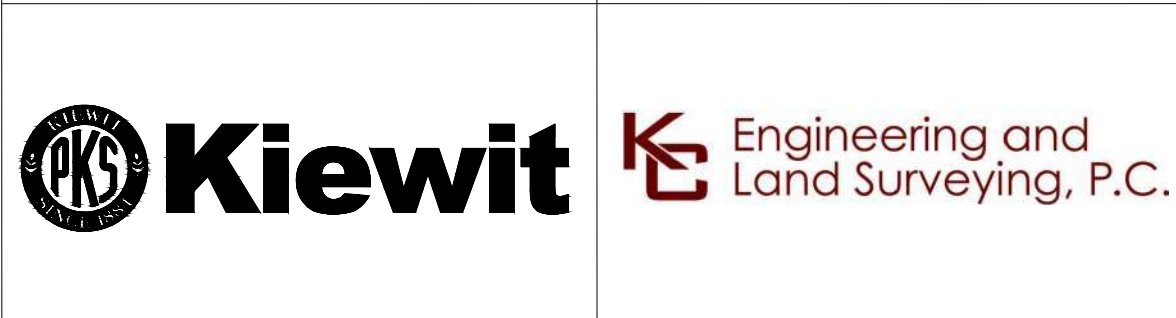


PEDESTRIAN DETOUR HDD 127 EXIT PLAN VIEW
 SCALE: 1" = 50'



NOTES:
 1. SWE NYSDOT STANDARD SHEET 619-520 FOR ADDITIONAL DETAILS.

LEGEND	
	CONSTRUCTION SIGNS
	TYPE III BARRICADE ITEM 619.04
	WORK ZONE
	DIRECTION OF TRAFFIC
	CHANNELIZING DEVICE ITEM 619.07010001



IT IS A VIOLATION OF LAW FOR ANY PERSON, UNLESS THEY ARE ACTING UNDER THE DIRECTION OF A LICENSED PROFESSIONAL ENGINEER, ARCHITECT, LANDSCAPE ARCHITECT OR LAND SURVEYOR TO ALTER AN ITEM IN ANY WAY. IF AN ITEM BEARING THE STAMP OF A LICENSED PROFESSIONAL IS ALTERED, THE ALTERING ENGINEER, ARCHITECT, LANDSCAPE ARCHITECT OR LAND SURVEYOR SHALL STAMP THE DOCUMENT AND INCLUDE THE NOTATION "ALTERED BY" FOLLOWED BY THEIR SIGNATURE, THE DATE OF SUCH ALTERATION, AND A SPECIFIC DESCRIPTION OF THE ALTERATION.

No.	DATE	SUBMITTAL / REVISION DESCRIPTION	DB	APP
1	12/22/2023	NDC-0030: NYSDOT R8 DIRECTED CHANGES	MS	SB
0	07/20/2023	ISSUED FOR CONSTRUCTION SUBMISSION	MS	SB

**CHAMPLAIN HUDSON POWER EXPRESS
 SEGMENT 12 (PACKAGE 7B) - ROUTE 9W: ROCKLAND**
 WORK ZONE TRAFFIC CONTROL DETAILS
 PEDESTRIAN DETOUR HDD 127

PERMIT DRAWING NO. **N/A**
 DRAWING NO. **O-803**

DRAWN BY: MS DESIGNED BY: MS APPROVED BY: SB SCALE AS SHOWN DATE: 07/20/2023

File: F:\120174-CHPE-CABLE-INSTALL-INSTALL-FILES\ENGINEERING_CAD_FILES\PACKAGE_7B\NY_TRAFFIC_SAFETY\01_KCE\SHEET_FILES\PACKAGE_7B_O-803_HDD127_EXIT_PD.DWG Saved: 12/20/2023 2:06:40 PM Plotted: 12/20/2023 3:51:01 PM Current User: Manny Sharma