

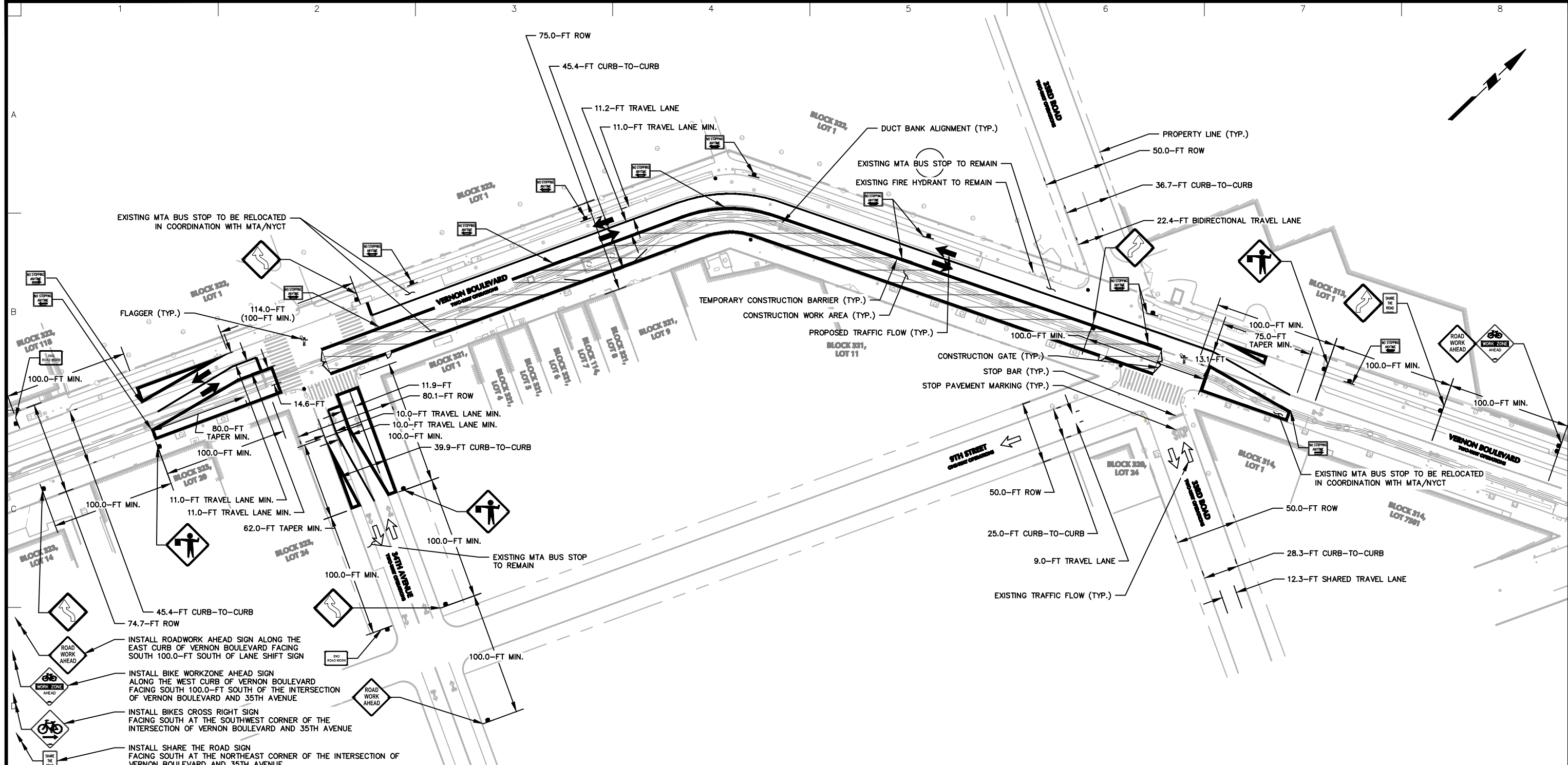
- LEGEND:**
- PROPERTY LINE
 - EXISTING TRAFFIC FLOW DIRECTION
 - ON-STREET PARKING REGULATION ID

- GENERAL NOTES:**
1. BACKGROUND INFORMATION OBTAINED FROM A FIELD SURVEY CONDUCTED BY LANGAN ENGINEERING, ENVIRONMENTAL, SURVEYING, LANDSCAPE ARCHITECTURE AND GEOLOGY, D.P.C. IN MARCH 2023.
 2. SURVEY INFORMATION SUPPLEMENTED WITH PAVEMENT MARKINGS OBTAINED FROM GOOGLE MAPS AND BING MAPS AERIAL IMAGERY.
 3. EXISTING ROADWAY CONDITIONS SHOWN FOR TYPICAL DUCT BANK AND MH-8 CONSTRUCTION ALONG 20TH AVENUE (SEE DWG. K-209).
 4. EXISTING ON-STREET PARKING REGULATIONS OBTAINED FROM NYC DOT ONLINE DATABASE AND VERIFIED USING RECENT IMAGERY OBTAINED FROM GOOGLE MAPS STREETVIEW IMAGERY.
 5. EXISTING ON-STREET REGULATIONS ARE REPRESENTED USING LETTER IDS. SEE SHEET K-003 FOR CORRESPONDING PARKING REGULATIONS.
 6. THE MPT DRAWING SET (DWG. K-001 - K-303) AND PROPOSED TEMPORARY TRAFFIC CONTROL DEVICES (DWG. K-201 - K-303) ARE SUBJECT TO REVIEW AND APPROVAL FROM NYC DOT'S OCMC.



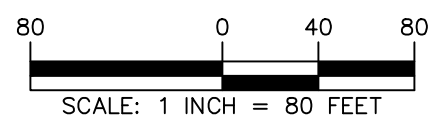
WARNING: IT IS A VIOLATION OF THE NYS EDUCATION LAW ARTICLE 145 FOR ANY PERSON, UNLESS HE OR SHE IS ACTING UNDER THE DIRECTION OF A LICENSED PROFESSIONAL ENGINEER, LAND SURVEYOR OR GEOLOGIST, TO ALTER THIS ITEM IN ANY WAY.

 Langan Engineering, Environmental, Surveying, Landscape Architecture, and Geology, D.P.C. One North Broadway, Suite 910 White Plains, NY 10601 T: 914.323.7400 F: 914.323.7401 www.langan.com	Project CHPE ARC PROJECT 3.5 MILE UG TRANSMISSION ASTORIA NEW YORK	Drawing Title EXISTING ROADWAY CONDITIONS - UTILITY CONSTRUCTION - 20TH AVE (SHORE BLVD - 29TH ST)	Project No. 190088801	Drawing No. K-110
	Date 2024-03-27	Drawn By NST	Checked By AP	Sheet 13 of 25



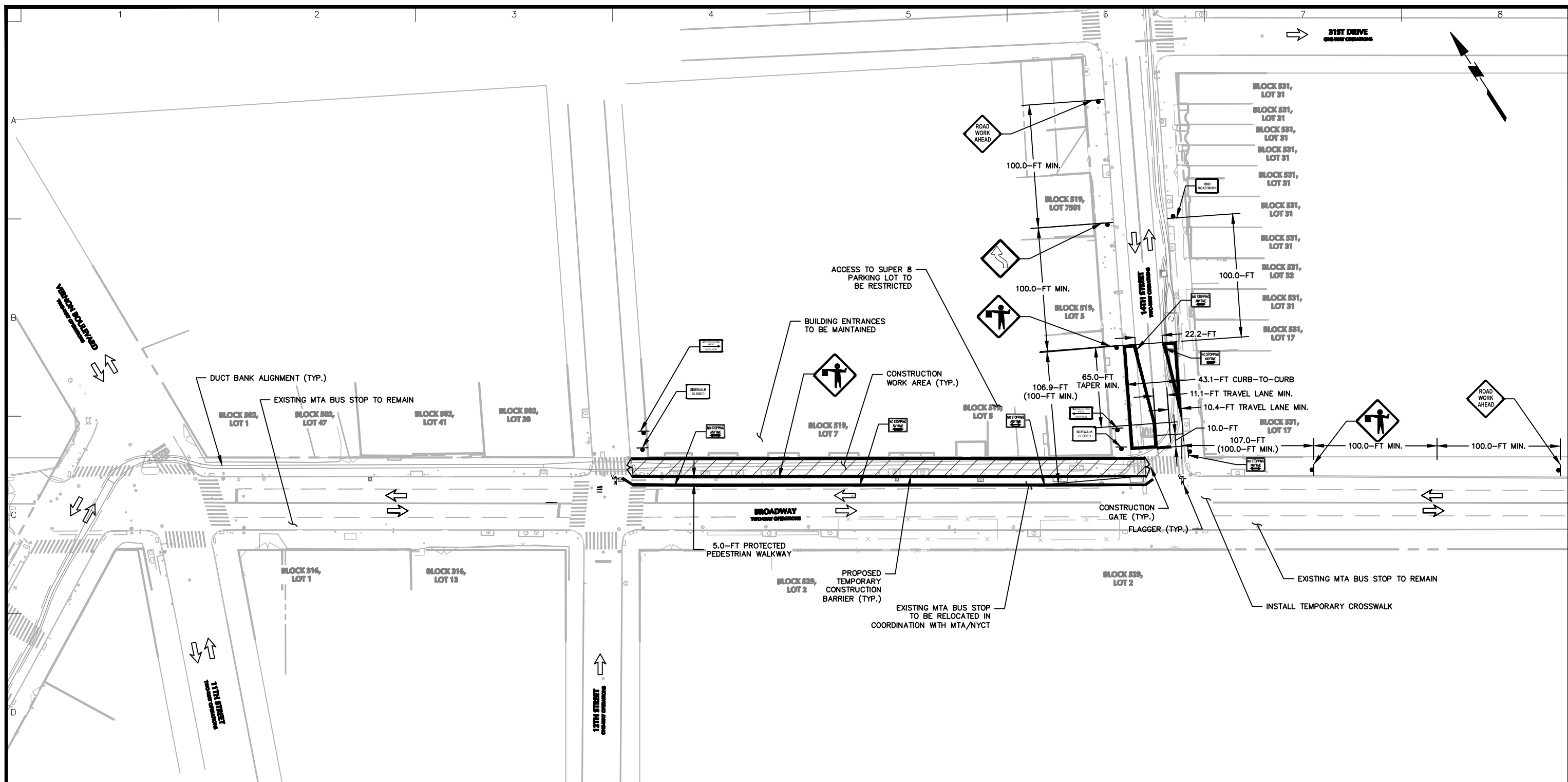
- LEGEND:**
- PROPERTY LINE
 - TRAFFIC FLOW DIRECTION
 - TEMPORARY CONSTRUCTION SIGN (NYC DOT ITEM 6.25)
 - WOODEN OR WATER-FILLED YODOCK CONSTRUCTION BARRIER CONFORMING TO NYC DOT STANDARD
 - CONSTRUCTION STAGING/WORK AREA
 - FLAGGER

- GENERAL NOTES:**
1. BACKGROUND INFORMATION OBTAINED FROM A FIELD SURVEY CONDUCTED BY LANGAN ENGINEERING, ENVIRONMENTAL, SURVEYING, LANDSCAPE ARCHITECTURE AND GEOLOGY, D.P.C. IN MARCH 2023.
 2. SURVEY INFORMATION SUPPLEMENTED WITH PAVEMENT MARKINGS OBTAINED FROM GOOGLE MAPS AND BING MAPS AERIAL IMAGERY.
 3. REFER TO DWG. K-101 FOR EXISTING ROADWAY CONDITIONS AND ON-STREET PARKING REGULATIONS.
 4. ALL TEMPORARY TRAFFIC CONTROL DEVICES SHOWN ON THIS PLAN SHOULD BE IMPLEMENTED IN ACCORDANCE WITH THE PROCEDURES AND GUIDELINES OUTLINED ON DWG. K-002.
 5. TEMPORARY TRAFFIC CONTROL DEVICES SHOWN ON THIS PLAN FACILITATE TYPICAL DUCTBANK CONSTRUCTION ALONG VERNON BOULEVARD BETWEEN 33RD ROAD AND 34TH AVENUE. THE MPT DESIGN AND METHODOLOGY SHOWN ON THIS PLAN SHOULD BE UTILIZED TO FACILITATE TYPICAL DUCTBANK CONSTRUCTION ALONG THE REMAINING SEGMENTS OF VERNON BOULEVARD.
 6. REFER TO DWG. K-002 FOR TYPICAL DUCTBANK CONSTRUCTION ACTIVITY WORK HOURS. TYPICAL DUCTBANK CONSTRUCTION DURATION WILL BE APPROXIMATELY ONE MONTH PER STREET BLOCK.
 7. CITIBIKE STANDS ALONG VERNON BOULEVARD WILL BE RELOCATED IN COORDINATION WITH NYC DOT, AS NEEDED, WHEN TEMPORARY TRAFFIC CONTROL DEVICES REQUIRED TO FACILITATE TYPICAL DUCTBANK CONSTRUCTION ARE SET UP IN LOCATIONS THAT CONFLICT WITH EXISTING CITIBIKE STANDS.
 8. BUS STOPS ALONG VERNON BOULEVARD WILL BE RELOCATED IN COORDINATION WITH THE MTA/NYCT, AS NEEDED, WHEN TEMPORARY TRAFFIC CONTROL DEVICES REQUIRED TO FACILITATE TYPICAL DUCTBANK CONSTRUCTION ARE SET UP IN LOCATIONS THAT CONFLICT WITH EXISTING BUS STOPS.
 9. THE MPT DRAWING SET (DWG. K-001 - K-303) AND PROPOSED TEMPORARY TRAFFIC CONTROL DEVICES (DWG. K-201 - K-303) ARE SUBJECT TO REVIEW AND APPROVAL FROM NYC DOT'S OCMC.



WARNING: IT IS A VIOLATION OF THE NYS EDUCATION LAW ARTICLE 145 FOR ANY PERSON, UNLESS HE OR SHE IS ACTING UNDER THE DIRECTION OF A LICENSED PROFESSIONAL ENGINEER, LAND SURVEYOR OR GEOLOGIST, TO ALTER THIS ITEM IN ANY WAY.

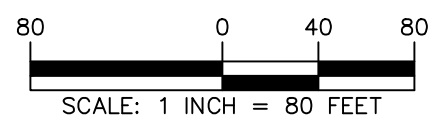
<p>LANGAN Langan Engineering, Environmental, Surveying, Landscape Architecture, and Geology, D.P.C. One North Broadway, Suite 910 White Plains, NY 10601 T: 914.323.7400 F: 914.323.7401 www.langan.com</p>	<p>Project CHPE ARC PROJECT 3.5 MILE UG TRANSMISSION</p>	<p>Drawing Title MPT - TYPICAL DUCTBANK CONSTRUCTION - VERNON BLVD</p>	<p>Project No. 190088801</p>	<p>Drawing No. K-201</p>
	<p>Queens County Astoria New York</p>	<p>Date 2024-03-27</p>	<p>Checked By AP</p>	<p>Sheet 14 of 25</p>



LEGEND:

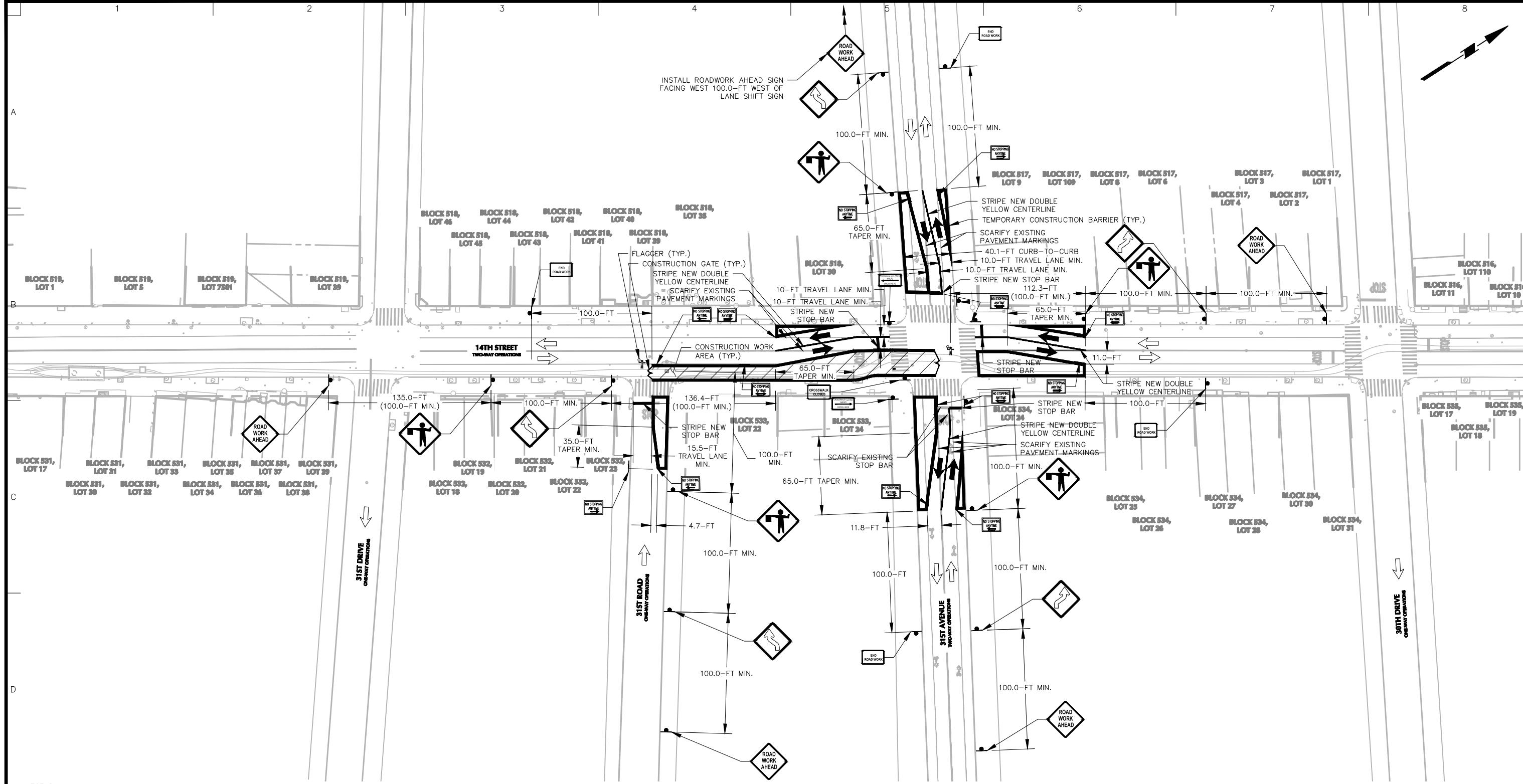
	PROPERTY LINE
	TRAFFIC FLOW DIRECTION
	TEMPORARY CONSTRUCTION SIGN (NYC DOT ITEM 6.25)
	WOODEN OR WATER-FILLED YODOCK CONSTRUCTION BARRIER CONFORMING TO NYC DOT STANDARD
	CONSTRUCTION STAGING/WORK AREA
	FLAGGER

- GENERAL NOTES:**
- BACKGROUND INFORMATION OBTAINED FROM A FIELD SURVEY CONDUCTED BY LANGAN ENGINEERING, ENVIRONMENTAL, SURVEYING, LANDSCAPE ARCHITECTURE AND GEOLOGY, D.P.C. IN MARCH 2023.
 - SURVEY INFORMATION SUPPLEMENTED WITH PAVEMENT MARKINGS OBTAINED FROM GOOGLE MAPS AND BING MAPS AERIAL IMAGERY.
 - REFER TO DWG. K-102 FOR EXISTING ROADWAY CONDITIONS AND ON-STREET PARKING REGULATIONS.
 - ALL TEMPORARY TRAFFIC CONTROL DEVICES SHOWN ON THIS PLAN SHOULD BE IMPLEMENTED IN ACCORDANCE WITH THE PROCEDURES AND GUIDELINES OUTLINED ON DWG. K-002.
 - TEMPORARY TRAFFIC CONTROL DEVICES SHOWN ON THIS PLAN FACILITATE TYPICAL DUCTBANK CONSTRUCTION ALONG BROADWAY BETWEEN 12TH AND 14TH STREETS. THE MPT DESIGN AND METHODOLOGY SHOWN ON THIS PLAN SHOULD BE UTILIZED TO FACILITATE TYPICAL DUCTBANK CONSTRUCTION ALONG THE REMAINING SEGMENTS OF BROADWAY.
 - REFER TO DWG. K-002 FOR TYPICAL DUCTBANK CONSTRUCTION ACTIVITY WORK HOURS. TYPICAL DUCTBANK CONSTRUCTION DURATION WILL BE APPROXIMATELY ONE MONTH PER STREET BLOCK.
 - CITIBIKE STANDS ALONG BROADWAY WILL BE RELOCATED IN COORDINATION WITH NYC DOT, AS NEEDED, WHEN TEMPORARY TRAFFIC CONTROL DEVICES REQUIRED TO FACILITATE TYPICAL DUCTBANK CONSTRUCTION ARE SET UP IN LOCATIONS THAT CONFLICT WITH EXISTING CITIBIKE STANDS.
 - BUS STOPS ALONG BROADWAY WILL BE RELOCATED IN COORDINATION WITH THE MTA/NYCT, AS NEEDED, WHEN TEMPORARY TRAFFIC CONTROL DEVICES REQUIRED TO FACILITATE TYPICAL DUCTBANK CONSTRUCTION ARE SET UP IN LOCATIONS THAT CONFLICT WITH EXISTING BUS STOPS.
 - THE MPT DRAWING SET (DWG. K-001 - K-303) AND PROPOSED TEMPORARY TRAFFIC CONTROL DEVICES (DWG. K-201 - K-303) ARE SUBJECT TO REVIEW AND APPROVAL FROM NYC DOT'S OCMC.



WARNING: IT IS A VIOLATION OF THE NYS EDUCATION LAW ARTICLE 145 FOR ANY PERSON, UNLESS HE OR SHE IS ACTING UNDER THE DIRECTION OF A LICENSED PROFESSIONAL ENGINEER, LAND SURVEYOR OR GEOLOGIST, TO ALTER THIS ITEM IN ANY WAY.

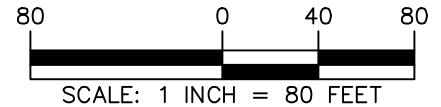
<p>LANGAN Langan Engineering, Environmental, Surveying, Landscape Architecture, and Geology, D.P.C. One North Broadway, Suite 910 White Plains, NY 10601 T: 914.323.7400 F: 914.323.7401 www.langan.com</p>	<p>Project CHPE ARC PROJECT 3.5 MILE UG TRANSMISSION</p>	<p>Drawing Title MPT - TYPICAL DUCTBANK CONSTRUCTION - BROADWAY</p>	<p>Project No. 190088801</p>	<p>Drawing No. K-202</p>
	<p>Queens County New York</p>	<p>Date 2024-03-27</p>	<p>Checked By AP</p>	<p>Sheet 15 of 25</p>



LEGEND:

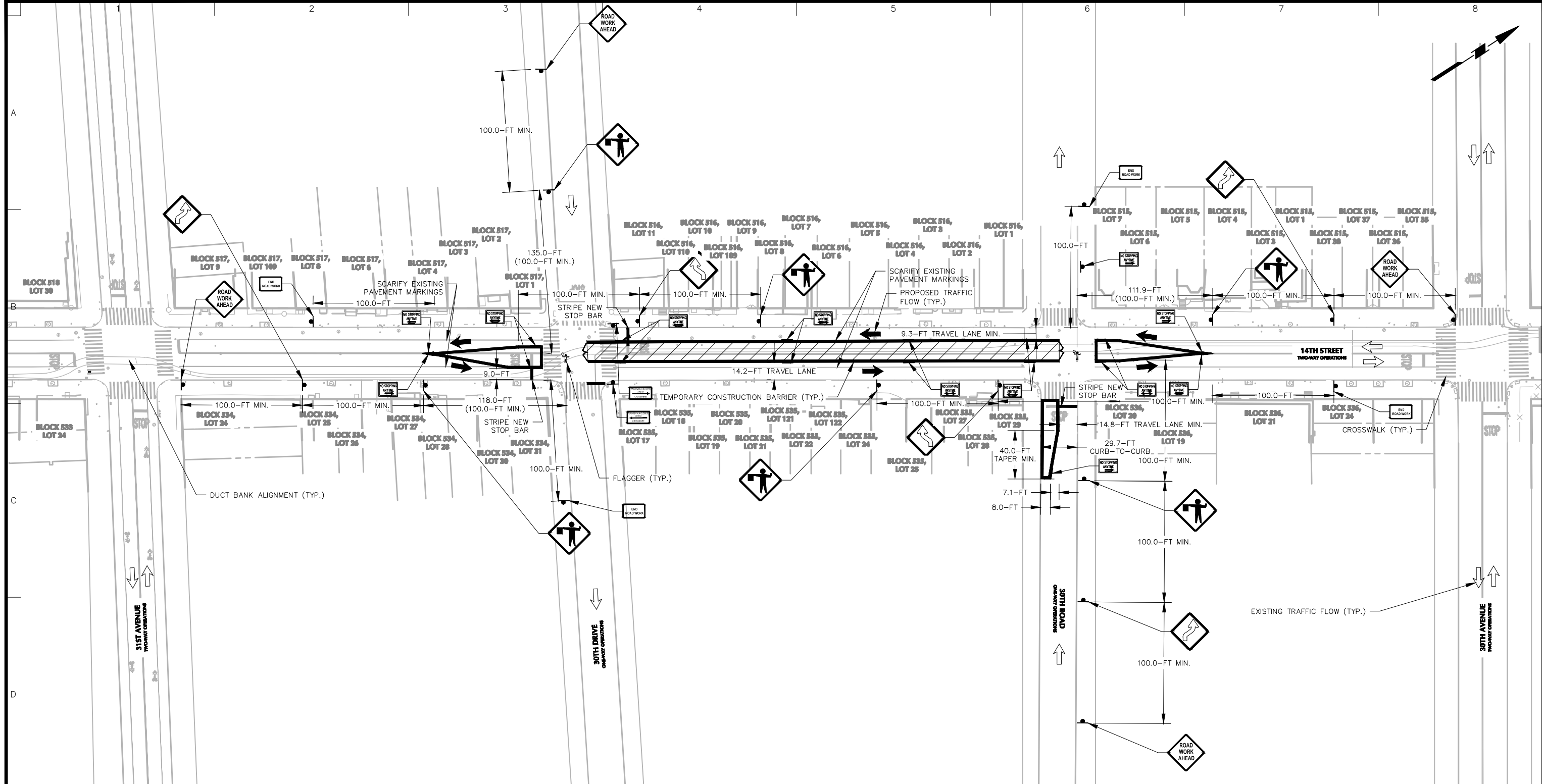
	PROPERTY LINE
	TRAFFIC FLOW DIRECTION
	TEMPORARY CONSTRUCTION SIGN (NYC DOT ITEM 6.25)
	WOODEN OR WATER-FILLED YODOCK CONSTRUCTION BARRIER CONFORMING TO NYC DOT STANDARD
	CONSTRUCTION STAGING/WORK AREA
	FLAGGER

- GENERAL NOTES:**
- BACKGROUND INFORMATION OBTAINED FROM A FIELD SURVEY CONDUCTED BY LANGAN ENGINEERING, ENVIRONMENTAL, SURVEYING, LANDSCAPE ARCHITECTURE AND GEOLOGY, D.P.C. IN MARCH 2023.
 - SURVEY INFORMATION SUPPLEMENTED WITH PAVEMENT MARKINGS OBTAINED FROM GOOGLE MAPS AND BING MAPS AERIAL IMAGERY.
 - REFER TO DWG. K-103 FOR EXISTING ROADWAY CONDITIONS AND ON-STREET PARKING REGULATIONS.
 - ALL TEMPORARY TRAFFIC CONTROL DEVICES SHOWN ON THIS PLAN SHOULD BE IMPLEMENTED IN ACCORDANCE WITH THE PROCEDURES AND GUIDELINES OUTLINED ON DWG. K-002.
 - TEMPORARY TRAFFIC CONTROL DEVICES SHOWN ON THIS PLAN FACILITATE TYPICAL CURBLINE DUCTBANK CONSTRUCTION ALONG 14TH STREET BETWEEN 31ST ROAD AND 31ST AVENUE. THE MPT DESIGN AND METHODOLOGY SHOWN ON THIS PLAN SHOULD BE UTILIZED TO FACILITATE TYPICAL CURBLINE DUCTBANK CONSTRUCTION ALONG THE REMAINING SEGMENTS OF 14TH STREET.
 - REFER TO DWG. K-002 FOR TYPICAL CURBLINE DUCTBANK CONSTRUCTION ACTIVITY WORK HOURS. TYPICAL CURBLINE DUCTBANK CONSTRUCTION DURATION WILL BE APPROXIMATELY ONE MONTH PER STREET BLOCK.
 - CITIBIKE STANDS ALONG 14TH STREET WILL BE RELOCATED IN COORDINATION WITH NYC DOT, AS NEEDED, WHEN TEMPORARY TRAFFIC CONTROL DEVICES REQUIRED TO FACILITATE TYPICAL CURBLINE DUCTBANK CONSTRUCTION ARE SET UP IN LOCATIONS THAT CONFLICT WITH EXISTING CITIBIKE STANDS.
 - BUS STOPS ALONG 14TH STREET WILL BE RELOCATED IN COORDINATION WITH THE MTA/NYCT, AS NEEDED, WHEN TEMPORARY TRAFFIC CONTROL DEVICES REQUIRED TO FACILITATE TYPICAL CURBLINE DUCTBANK CONSTRUCTION ARE SET UP IN LOCATIONS THAT CONFLICT WITH EXISTING BUS STOPS.
 - THE MPT DRAWING SET (DWG. K-001 - K-303) AND PROPOSED TEMPORARY TRAFFIC CONTROL DEVICES (DWG. K-201 - K-303) ARE SUBJECT TO REVIEW AND APPROVAL FROM NYC DOT'S OCMC.



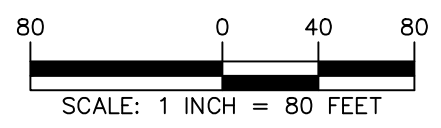
WARNING: IT IS A VIOLATION OF THE NYS EDUCATION LAW ARTICLE 145 FOR ANY PERSON, UNLESS HE OR SHE IS ACTING UNDER THE DIRECTION OF A LICENSED PROFESSIONAL ENGINEER, LAND SURVEYOR OR GEOLOGIST, TO ALTER THIS ITEM IN ANY WAY.

<p>LANGAN Langan Engineering, Environmental, Surveying, Landscape Architecture, and Geology, D.P.C. One North Broadway, Suite 910 White Plains, NY 10601 T: 914.323.7400 F: 914.323.7401 www.langan.com</p>	<p>Project CHPE ARC PROJECT 3.5 MILE UG TRANSMISSION</p>	<p>Drawing Title MPT - TYPICAL CURBLINE DUCTBANK CONSTRUCTION - 14TH ST</p>	<p>Project No. 19008801</p>	<p>Drawing No. K-203</p>
	<p>Queens County Astoria New York</p>	<p>Date 2024-03-27</p>	<p>Drawn By NST</p>	<p>Checked By AP</p>



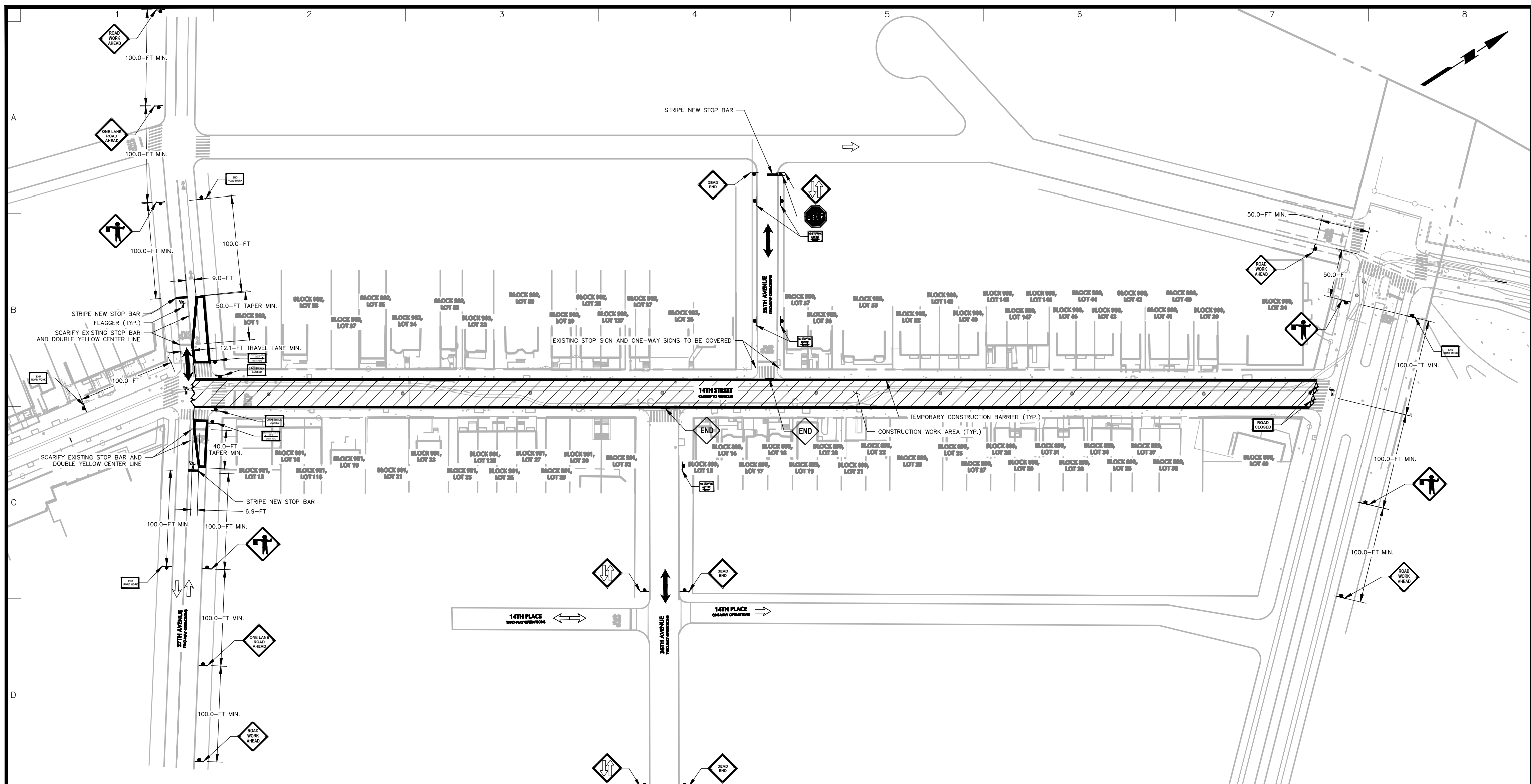
- LEGEND:**
- PROPERTY LINE
 - TRAFFIC FLOW DIRECTION
 - TEMPORARY CONSTRUCTION SIGN (NYC DOT ITEM 6.25)
 - WOODEN OR WATER-FILLED YODOCK CONSTRUCTION BARRIER CONFORMING TO NYC DOT STANDARD
 - CONSTRUCTION STAGING/WORK AREA
 - FLAGGER

- GENERAL NOTES:**
1. BACKGROUND INFORMATION OBTAINED FROM A FIELD SURVEY CONDUCTED BY LANGAN ENGINEERING, ENVIRONMENTAL, SURVEYING, LANDSCAPE ARCHITECTURE AND GEOLOGY, D.P.C. IN MARCH 2023.
 2. SURVEY INFORMATION SUPPLEMENTED WITH PAVEMENT MARKINGS OBTAINED FROM GOOGLE MAPS AND BING MAPS AERIAL IMAGERY.
 3. REFER TO DWG. K-104 FOR EXISTING ROADWAY CONDITIONS AND ON-STREET PARKING REGULATIONS.
 4. ALL TEMPORARY TRAFFIC CONTROL DEVICES SHOWN ON THIS PLAN SHOULD BE IMPLEMENTED IN ACCORDANCE WITH THE PROCEDURES AND GUIDELINES OUTLINED ON DWG. K-002.
 5. TEMPORARY TRAFFIC CONTROL DEVICES SHOWN ON THIS PLAN FACILITATE TYPICAL CENTERLINE DUCTBANK CONSTRUCTION ALONG 14TH STREET BETWEEN 30TH DRIVE AND 30TH ROAD. THE MPT DESIGN AND METHODOLOGY SHOWN ON THIS PLAN SHOULD BE UTILIZED TO FACILITATE TYPICAL CENTERLINE DUCTBANK CONSTRUCTION ALONG THE REMAINING SEGMENTS OF 14TH STREET.
 6. REFER TO DWG. K-002 FOR TYPICAL CENTERLINE DUCTBANK CONSTRUCTION ACTIVITY WORK HOURS. TYPICAL CENTERLINE DUCTBANK CONSTRUCTION DURATION WILL BE APPROXIMATELY ONE MONTH PER STREET BLOCK.
 7. CITIBIKE STANDS ALONG 14TH STREET WILL BE RELOCATED IN COORDINATION WITH NYC DOT, AS NEEDED, WHEN TEMPORARY TRAFFIC CONTROL DEVICES REQUIRED TO FACILITATE TYPICAL CENTERLINE DUCTBANK CONSTRUCTION ARE SET UP IN LOCATIONS THAT CONFLICT WITH EXISTING CITIBIKE STANDS.
 8. BUS STOPS ALONG 14TH STREET WILL BE RELOCATED IN COORDINATION WITH THE MTA/NYCT, AS NEEDED, WHEN TEMPORARY TRAFFIC CONTROL DEVICES REQUIRED TO FACILITATE TYPICAL CENTERLINE DUCTBANK CONSTRUCTION ARE SET UP IN LOCATIONS THAT CONFLICT WITH EXISTING BUS STOPS.
 9. THE MPT DRAWING SET (DWG. K-001 - K-303) AND PROPOSED TEMPORARY TRAFFIC CONTROL DEVICES (DWG. K-201 - K-303) ARE SUBJECT TO REVIEW AND APPROVAL FROM NYC DOT'S OCMC.



WARNING: IT IS A VIOLATION OF THE NYS EDUCATION LAW ARTICLE 145 FOR ANY PERSON, UNLESS HE OR SHE IS ACTING UNDER THE DIRECTION OF A LICENSED PROFESSIONAL ENGINEER, LAND SURVEYOR OR GEOLOGIST, TO ALTER THIS ITEM IN ANY WAY.

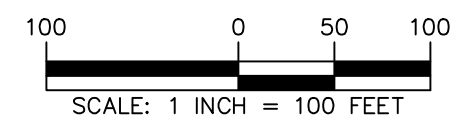
<p>LANGAN Langan Engineering, Environmental, Surveying, Landscape Architecture, and Geology, D.P.C. One North Broadway, Suite 910 White Plains, NY 10601 T: 914.323.7400 F: 914.323.7401 www.langan.com</p>	<p>Project CHPE ARC PROJECT 3.5 MILE UG TRANSMISSION</p>	<p>Drawing Title MPT - TYPICAL CENTERLINE DUCTBANK CONSTRUCTION - 14TH ST</p>	<p>Project No. 19008801</p>	<p>Drawing No. K-204</p>
	<p>Queens County ASTORIA NEW YORK</p>	<p>Date 2024-03-27</p>	<p>Drawn By NST</p>	<p>Checked By AP</p>



LEGEND:

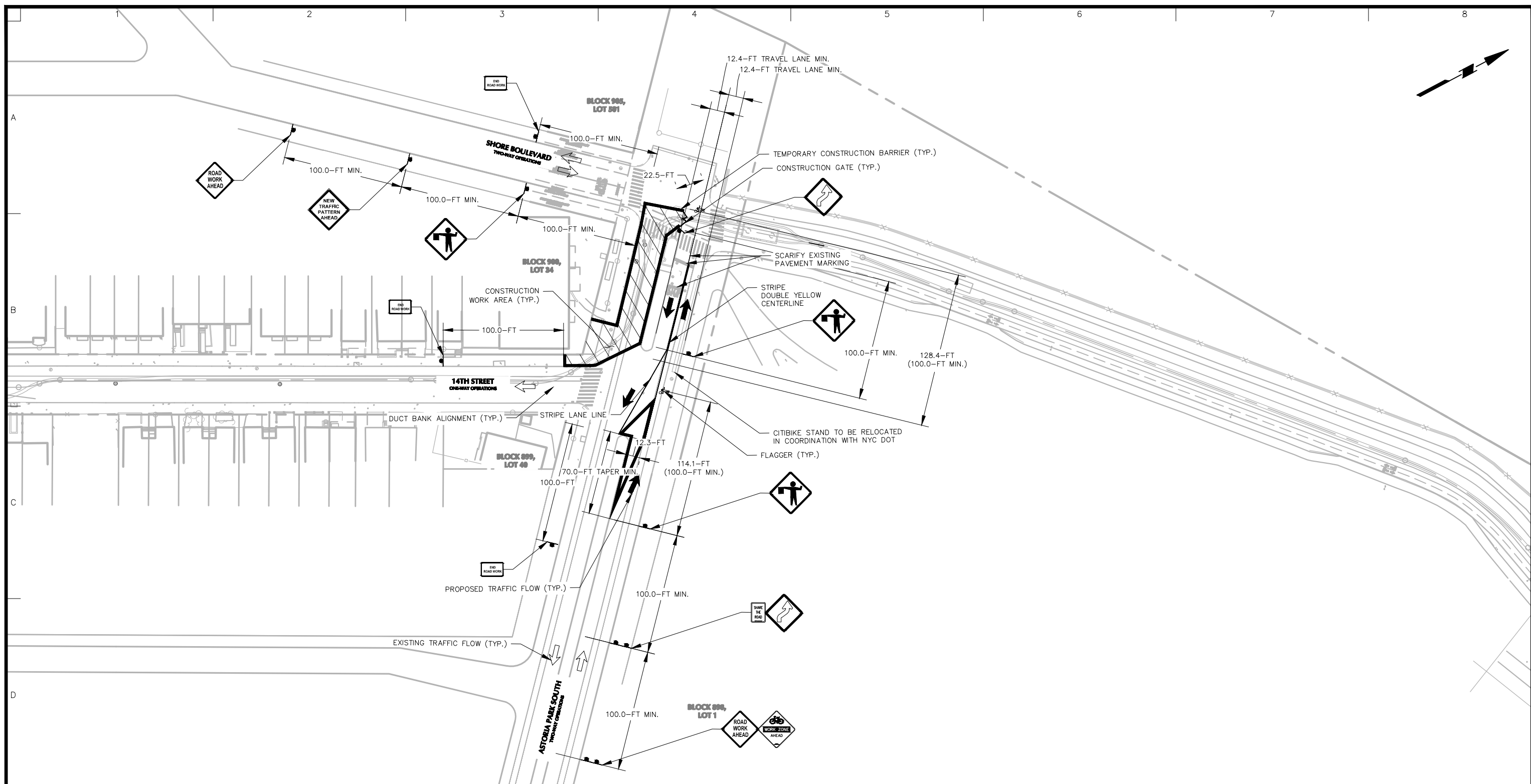
	PROPERTY LINE
	TRAFFIC FLOW DIRECTION
	TEMPORARY CONSTRUCTION SIGN (NYC DOT ITEM 6.25)
	WOODEN OR WATER-FILLED YODOCK CONSTRUCTION BARRIER CONFORMING TO NYC DOT STANDARD
	CONSTRUCTION STAGING/WORK AREA
	FLAGGER

- GENERAL NOTES:**
- BACKGROUND INFORMATION OBTAINED FROM A FIELD SURVEY CONDUCTED BY LANGAN ENGINEERING, ENVIRONMENTAL, SURVEYING, LANDSCAPE ARCHITECTURE AND GEOLOGY, D.P.C. IN MARCH 2023.
 - SURVEY INFORMATION SUPPLEMENTED WITH PAVEMENT MARKINGS OBTAINED FROM GOOGLE MAPS AND BING MAPS AERIAL IMAGERY.
 - REFER TO DWG. K-106 FOR EXISTING ROADWAY CONDITIONS AND ON-STREET PARKING REGULATIONS.
 - ALL TEMPORARY TRAFFIC CONTROL DEVICES SHOWN ON THIS PLAN SHOULD BE IMPLEMENTED IN ACCORDANCE WITH THE PROCEDURES AND GUIDELINES OUTLINED ON DWG. K-002.
 - TEMPORARY TRAFFIC CONTROL DEVICES SHOWN ON THIS PLAN FACILITATE TYPICAL DUCTBANK CONSTRUCTION ALONG 14TH STREET BETWEEN 27TH AVENUE AND ASTORIA PARK SOUTH. CONSTRUCTION ACTIVITIES ON THIS SEGMENT OF 14TH STREET REQUIRE A COMPLETE ROADWAY CLOSURE THAT PROVIDES LOCAL RESIDENT AND EMERGENCY VEHICLE ACCESS ONLY.
 - REFER TO DWG. K-002 FOR TYPICAL DUCTBANK CONSTRUCTION ACTIVITY WORK HOURS. TYPICAL DUCTBANK CONSTRUCTION DURATION WILL BE APPROXIMATELY ONE MONTH PER STREET BLOCK.
 - CITIBIKE STANDS ALONG 14TH STREET WILL BE RELOCATED IN COORDINATION WITH NYC DOT, AS NEEDED, WHEN TEMPORARY TRAFFIC CONTROL DEVICES REQUIRED TO FACILITATE TYPICAL DUCTBANK CONSTRUCTION ARE SET UP IN LOCATIONS THAT CONFLICT WITH EXISTING CITIBIKE STANDS.
 - THE MPT DRAWING SET (DWG. K-001 - K-303) AND PROPOSED TEMPORARY TRAFFIC CONTROL DEVICES (DWG. K-201 - K-303) ARE SUBJECT TO REVIEW AND APPROVAL FROM NYC DOT'S OCMC.



WARNING: IT IS A VIOLATION OF THE NYS EDUCATION LAW ARTICLE 145 FOR ANY PERSON, UNLESS HE OR SHE IS ACTING UNDER THE DIRECTION OF A LICENSED PROFESSIONAL ENGINEER, LAND SURVEYOR OR GEOLOGIST, TO ALTER THIS ITEM IN ANY WAY.

<p>LANGAN Langan Engineering, Environmental, Surveying, Landscape Architecture, and Geology, D.P.C. One North Broadway, Suite 910 White Plains, NY 10601 T: 914.323.7400 F: 914.323.7401 www.langan.com</p>	<p>Project CHPE ARC PROJECT 3.5 MILE UG TRANSMISSION</p>	<p>Drawing Title MPT - TYPICAL DUCTBANK CONSTRUCTION - 14TH ST (FULL CLOSURE)</p>	<p>Project No. 190088801</p>	<p>Drawing No. K-205</p>
	<p>Queens County Astoria New York</p>	<p>Date 2024-03-27</p>	<p>Checked By NST</p>	<p>Sheet 18 of 25</p>



LEGEND:

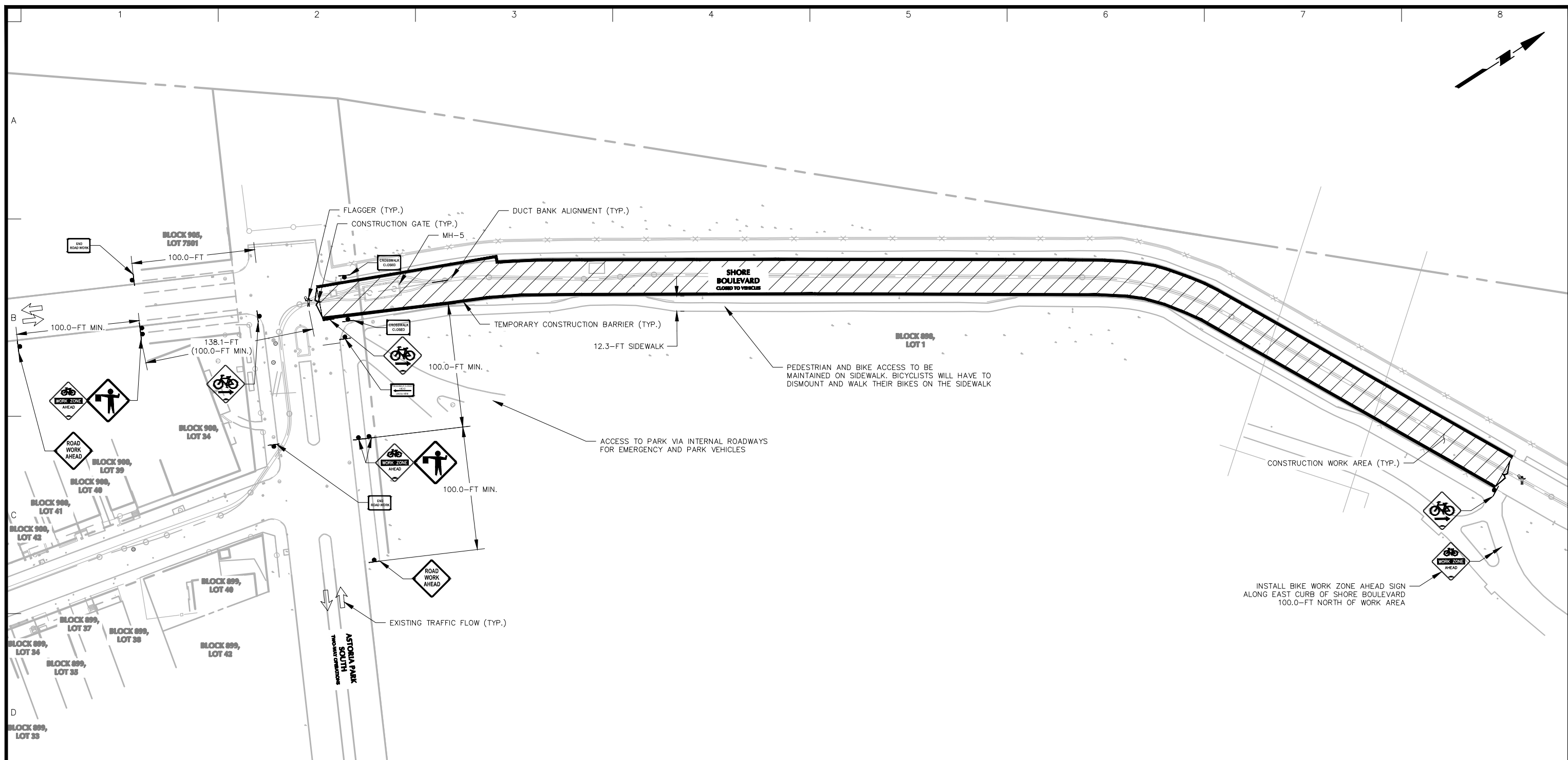
	PROPERTY LINE
	TRAFFIC FLOW DIRECTION
	TEMPORARY CONSTRUCTION SIGN (NYC DOT ITEM 6.25)
	WOODEN OR WATER-FILLED YODOCK CONSTRUCTION BARRIER CONFORMING TO NYC DOT STANDARD
	CONSTRUCTION STAGING/WORK AREA
	FLAGGER

- GENERAL NOTES:**
- BACKGROUND INFORMATION OBTAINED FROM A FIELD SURVEY CONDUCTED BY LANGAN ENGINEERING, ENVIRONMENTAL, SURVEYING, LANDSCAPE ARCHITECTURE AND GEOLOGY, D.P.C. IN MARCH 2023.
 - SURVEY INFORMATION SUPPLEMENTED WITH PAVEMENT MARKINGS OBTAINED FROM GOOGLE MAPS AND BING MAPS AERIAL IMAGERY.
 - REFER TO DWG. K-107 FOR EXISTING ROADWAY CONDITIONS AND ON-STREET PARKING REGULATIONS.
 - ALL TEMPORARY TRAFFIC CONTROL DEVICES SHOWN ON THIS PLAN SHOULD BE IMPLEMENTED IN ACCORDANCE WITH THE PROCEDURES AND GUIDELINES OUTLINED ON DWG. K-002.
 - TEMPORARY TRAFFIC CONTROL DEVICES SHOWN ON THIS PLAN FACILITATE DUCTBANK CONSTRUCTION ALONG ASTORIA PARK SOUTH BETWEEN 14TH STREET AND SHORE BOULEVARD.
 - REFER TO DWG. K-002 FOR TYPICAL DUCTBANK CONSTRUCTION ACTIVITY WORK HOURS. TYPICAL DUCTBANK CONSTRUCTION DURATION WILL BE APPROXIMATELY ONE MONTH PER STREET BLOCK.
 - CITIBIKE STANDS ALONG ASTORIA PARK SOUTH WILL BE RELOCATED IN COORDINATION WITH NYC DOT, AS NEEDED, WHEN TEMPORARY TRAFFIC CONTROL DEVICES REQUIRED TO FACILITATE DUCTBANK CONSTRUCTION ARE SET UP IN LOCATIONS THAT CONFLICT WITH EXISTING CITIBIKE STANDS.
 - THE MPT DRAWING SET (DWG. K-001 - K-303) AND PROPOSED TEMPORARY TRAFFIC CONTROL DEVICES (DWG. K-201 - K-303) ARE SUBJECT TO REVIEW AND APPROVAL FROM NYC DOT'S OCMC.



WARNING: IT IS A VIOLATION OF THE NYS EDUCATION LAW ARTICLE 145 FOR ANY PERSON, UNLESS HE OR SHE IS ACTING UNDER THE DIRECTION OF A LICENSED PROFESSIONAL ENGINEER, LAND SURVEYOR OR GEOLOGIST, TO ALTER THIS ITEM IN ANY WAY.

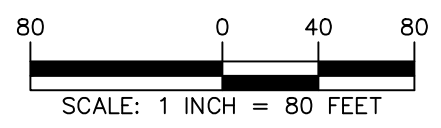
<p>LANGAN Langan Engineering, Environmental, Surveying, Landscape Architecture, and Geology, D.P.C. One North Broadway, Suite 910 White Plains, NY 10601 T: 914.323.7400 F: 914.323.7401 www.langan.com</p>	<p>Project CHPE ARC PROJECT 3.5 MILE UG TRANSMISSION</p>	<p>Drawing Title MPT - DUCTBANK CONSTRUCTION - ASTORIA PARK S</p>	<p>Project No. 190088801</p>	<p>Drawing No. K-206</p>
	<p>Queens County Astoria New York</p>	<p>Date 2024-03-27</p>	<p>Drawn By NST</p>	<p>Checked By AP</p>



LEGEND:

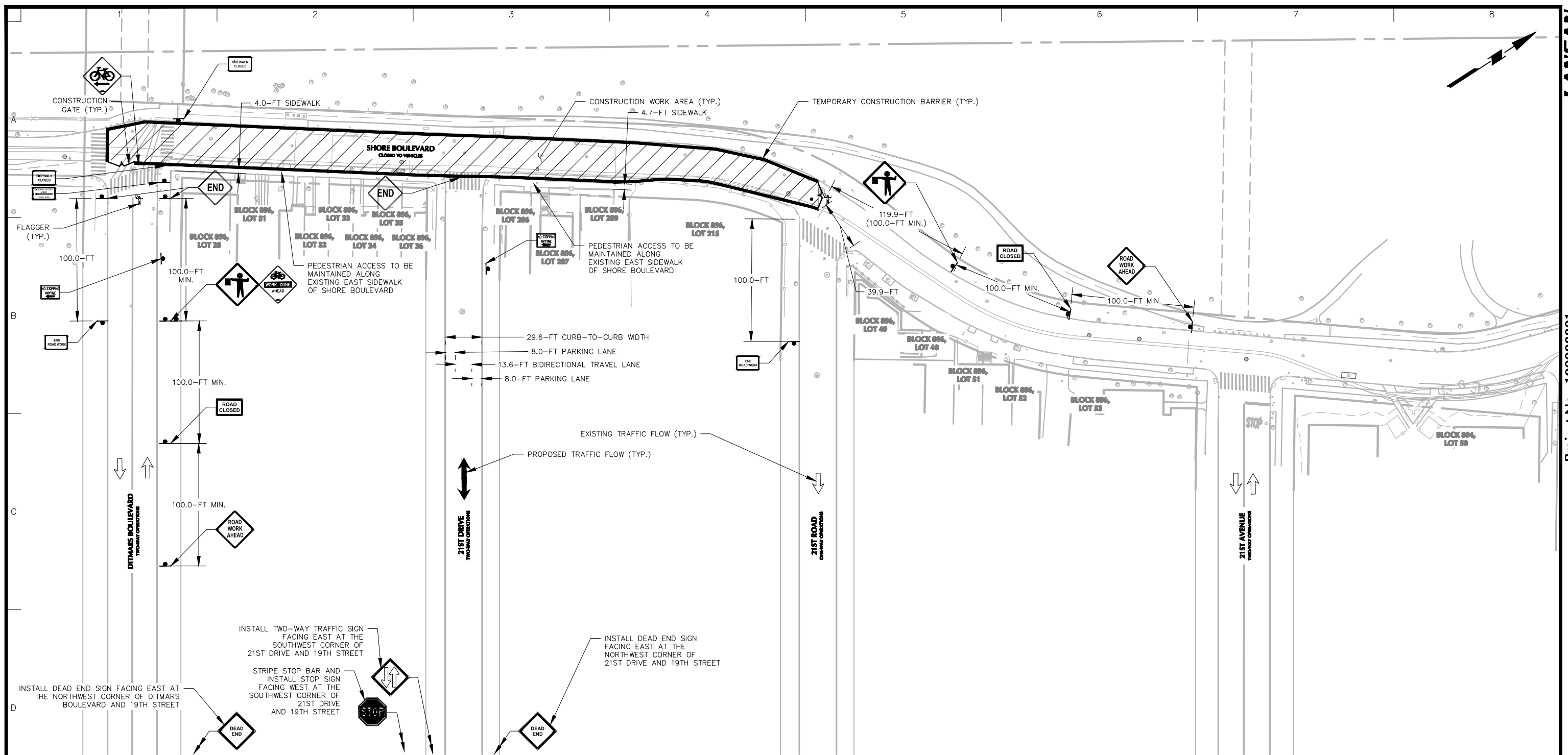
	PROPERTY LINE
	TRAFFIC FLOW DIRECTION
	TEMPORARY CONSTRUCTION SIGN (NYC DOT ITEM 6.25)
	WOODEN OR WATER-FILLED YODOCK CONSTRUCTION BARRIER CONFORMING TO NYC DOT STANDARD
	CONSTRUCTION STAGING/WORK AREA
	FLAGGER

- GENERAL NOTES:**
- BACKGROUND INFORMATION OBTAINED FROM A FIELD SURVEY CONDUCTED BY LANGAN ENGINEERING, ENVIRONMENTAL, SURVEYING, LANDSCAPE ARCHITECTURE AND GEOLOGY, D.P.C. IN MARCH 2023.
 - SURVEY INFORMATION SUPPLEMENTED WITH PAVEMENT MARKINGS OBTAINED FROM GOOGLE MAPS AND BING MAPS AERIAL IMAGERY.
 - REFER TO DWG. K-108 FOR EXISTING ROADWAY CONDITIONS AND ON-STREET PARKING REGULATIONS.
 - ALL TEMPORARY TRAFFIC CONTROL DEVICES SHOWN ON THIS PLAN SHOULD BE IMPLEMENTED IN ACCORDANCE WITH THE PROCEDURES AND GUIDELINES OUTLINED ON DWG. K-002.
 - TEMPORARY TRAFFIC CONTROL DEVICES SHOWN ON THIS PLAN FACILITATE TYPICAL DUCTBANK, MH-5, AND MH-6 CONSTRUCTION ALONG SHORE BOULEVARD BETWEEN ASTORIA PARK SOUTH AND DITMARS BOULEVARD; AND CABLE PULLING AND CABLE SPLICING OPERATIONS AT MH-5 AND MH-6. CONSTRUCTION ACTIVITIES ON THIS SEGMENT OF SHORE BOULEVARD REQUIRE A COMPLETE VEHICLE TRAVEL LANE CLOSURE THAT PROVIDES BICYCLE AND EMERGENCY VEHICLE ACCESS ONLY.
 - REFER TO DWG. K-002 FOR TYPICAL DUCTBANK AND MANHOLE CONSTRUCTION ACTIVITY WORK HOURS; AND FOR CABLE PULLING AND CABLE SPLICING CONSTRUCTION ACTIVITY WORK HOURS AT MH-5 AND MH-6. TYPICAL DUCTBANK CONSTRUCTION DURATION WILL BE APPROXIMATELY ONE MONTH PER STREET BLOCK. MANHOLE CONSTRUCTION DURATION WILL BE APPROXIMATELY TWO MONTHS PER MANHOLE. CABLE PULLING AND CABLE SPLICING CONSTRUCTION DURATION WILL BE APPROXIMATELY TWO WEEKS FOR EACH RESPECTIVE PHASE AT EACH MANHOLE.
 - CITIBIKE STANDS ALONG SHORE BOULEVARD WILL BE RELOCATED IN COORDINATION WITH NYC DOT, AS NEEDED, WHEN TEMPORARY TRAFFIC CONTROL DEVICES REQUIRED TO FACILITATE TYPICAL DUCTBANK AND MANHOLE CONSTRUCTION ARE SET UP IN LOCATIONS THAT CONFLICT WITH EXISTING CITIBIKE STANDS.
 - THE MPT DRAWING SET (DWG. K-001 - K-303) AND PROPOSED TEMPORARY TRAFFIC CONTROL DEVICES (DWG. K-201 - K-303) ARE SUBJECT TO REVIEW AND APPROVAL FROM NYC DOT'S OCMC.



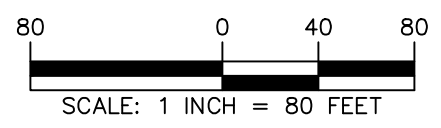
WARNING: IT IS A VIOLATION OF THE NYS EDUCATION LAW ARTICLE 145 FOR ANY PERSON, UNLESS HE OR SHE IS ACTING UNDER THE DIRECTION OF A LICENSED PROFESSIONAL ENGINEER, LAND SURVEYOR OR GEOLOGIST, TO ALTER THIS ITEM IN ANY WAY.

<p>LANGAN Langan Engineering, Environmental, Surveying, Landscape Architecture, and Geology, D.P.C. One North Broadway, Suite 910 White Plains, NY 10601 T: 914.323.7400 F: 914.323.7401 www.langan.com</p>	Project	Drawing Title	Project No.	Drawing No.	
	<p>CHPE ARC PROJECT 3.5 MILE UG TRANSMISSION</p>		190088801	K-207	
	<p>ASTORIA NEW YORK</p>		<p>MPT - TYPICAL DUCTBANK, MH-5 & MH-6 CONSTRUCTION - SHORE BLVD (ASTORIA BLVD - DITMARS BLVD)</p>	<p>Date 2024-03-27</p>	<p>Sheet 20 of 25</p>
	<p>QUEENS COUNTY</p>		<p>ASTORIA NEW YORK</p>	<p>Drawn By NST</p> <p>Checked By AP</p>	



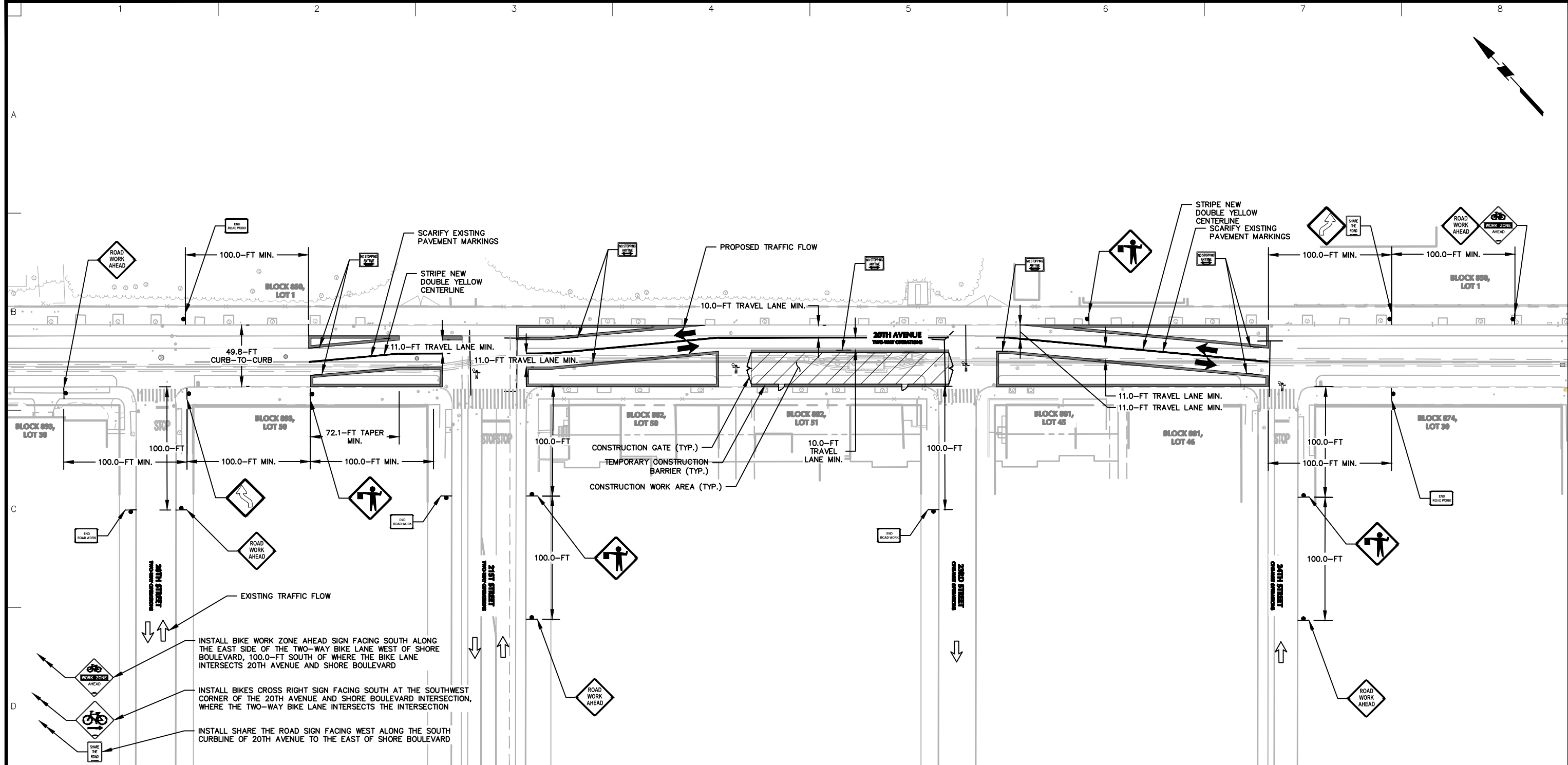
- LEGEND:**
- PROPERTY LINE
 - TRAFFIC FLOW DIRECTION
 - TEMPORARY CONSTRUCTION SIGN (NYC DOT ITEM 6.25)
 - WOODEN OR WATER-FILLED YODOCK CONSTRUCTION BARRIER CONFORMING TO NYC DOT STANDARD
 - CONSTRUCTION STAGING/WORK AREA
 - FLAGGER

- GENERAL NOTES:**
1. BACKGROUND INFORMATION OBTAINED FROM A FIELD SURVEY CONDUCTED BY LANGAN ENGINEERING, ENVIRONMENTAL, SURVEYING, LANDSCAPE ARCHITECTURE AND GEOLOGY, D.P.C. IN MARCH 2023.
 2. SURVEY INFORMATION SUPPLEMENTED WITH PAVEMENT MARKINGS OBTAINED FROM GOOGLE MAPS AND BING MAPS AERIAL IMAGERY.
 3. REFER TO DWG. K-109 FOR EXISTING ROADWAY CONDITIONS AND ON-STREET PARKING REGULATIONS.
 4. ALL TEMPORARY TRAFFIC CONTROL DEVICES SHOWN ON THIS PLAN SHOULD BE IMPLEMENTED IN ACCORDANCE WITH THE PROCEDURES AND GUIDELINES OUTLINED ON DWG. K-002.
 5. TEMPORARY TRAFFIC CONTROL DEVICES SHOWN ON THIS PLAN FACILITATE TYPICAL DUCTBANK CONSTRUCTION ALONG SHORE BOULEVARD BETWEEN DITMARS BOULEVARD AND 21ST ROAD. CONSTRUCTION ACTIVITIES ON THIS SEGMENT OF SHORE BOULEVARD WILL OCCUR IN TWO-BLOCK INCREMENTS (AS SHOWN) AND REQUIRE A COMPLETE ROADWAY CLOSURE THAT PROVIDES LOCAL RESIDENT AND EMERGENCY VEHICLE ACCESS ONLY. THE MPT DESIGN AND METHODOLOGY SHOWN ON THIS PLAN SHOULD BE UTILIZED TO FACILITATE TYPICAL DUCTBANK AND MH-7 CONSTRUCTION ALONG SHORE BOULEVARD BETWEEN 20TH AVENUE AND 21ST ROAD IN TWO-BLOCK INCREMENTS; AND CABLE PULLING AND CABLE SPLICING OPERATIONS AT MH-7.
 6. REFER TO DWG. K-002 FOR TYPICAL DUCTBANK AND MANHOLE CONSTRUCTION ACTIVITY WORK HOURS; AND FOR CABLE PULLING AND CABLE SPLICING CONSTRUCTION ACTIVITY WORK HOURS AT MH-7. TYPICAL DUCTBANK CONSTRUCTION DURATION WILL BE APPROXIMATELY ONE MONTH PER STREET BLOCK. MANHOLE CONSTRUCTION DURATION WILL BE APPROXIMATELY TWO MONTHS PER MANHOLE. CABLE PULLING AND CABLE SPLICING CONSTRUCTION DURATION WILL BE APPROXIMATELY TWO WEEKS FOR EACH RESPECTIVE PHASE AT EACH MANHOLE.
 7. CITIBIKE STANDS ALONG SHORE BOULEVARD WILL BE RELOCATED IN COORDINATION WITH NYC DOT, AS NEEDED, WHEN TEMPORARY TRAFFIC CONTROL DEVICES REQUIRED TO FACILITATE TYPICAL DUCTBANK AND MANHOLE CONSTRUCTION ARE SET UP IN LOCATIONS THAT CONFLICT WITH EXISTING CITIBIKE STANDS.
 8. THE MPT DRAWING SET (DWG. K-001 - K-303) AND PROPOSED TEMPORARY TRAFFIC CONTROL DEVICES (DWG. K-201 - K-303) ARE SUBJECT TO REVIEW AND APPROVAL FROM NYC DOT'S OCMC.



WARNING: IT IS A VIOLATION OF THE NYS EDUCATION LAW ARTICLE 145 FOR ANY PERSON, UNLESS HE OR SHE IS ACTING UNDER THE DIRECTION OF A LICENSED PROFESSIONAL ENGINEER, LAND SURVEYOR OR GEOLOGIST, TO ALTER THIS ITEM IN ANY WAY.

 Langan Engineering, Environmental, Surveying, Landscape Architecture, and Geology, D.P.C. One North Broadway, Suite 910 White Plains, NY 10601 T: 914.323.7400 F: 914.323.7401 www.langan.com	Project CHPE ARC PROJECT 3.5 MILE UG TRANSMISSION ASTORIA NEW YORK	Drawing Title MPT - TYPICAL DUCTBANK & MH-7 CONSTRUCTION - SHORE BLVD (DITMARS BLVD - 20TH AVE)	Project No. 19008801	Drawing No. K-208
			Date 2024-03-27	Sheet 21 of 25
		Drawn By NST		
		Checked By AP		



INSTALL BIKE WORK ZONE AHEAD SIGN FACING SOUTH ALONG THE EAST SIDE OF THE TWO-WAY BIKE LANE WEST OF SHORE BOULEVARD, 100.0-FT SOUTH OF WHERE THE BIKE LANE INTERSECTS 20TH AVENUE AND SHORE BOULEVARD

INSTALL BIKES CROSS RIGHT SIGN FACING SOUTH AT THE SOUTHWEST CORNER OF THE 20TH AVENUE AND SHORE BOULEVARD INTERSECTION, WHERE THE TWO-WAY BIKE LANE INTERSECTS THE INTERSECTION

INSTALL SHARE THE ROAD SIGN FACING WEST ALONG THE SOUTH CURBLINE OF 20TH AVENUE TO THE EAST OF SHORE BOULEVARD

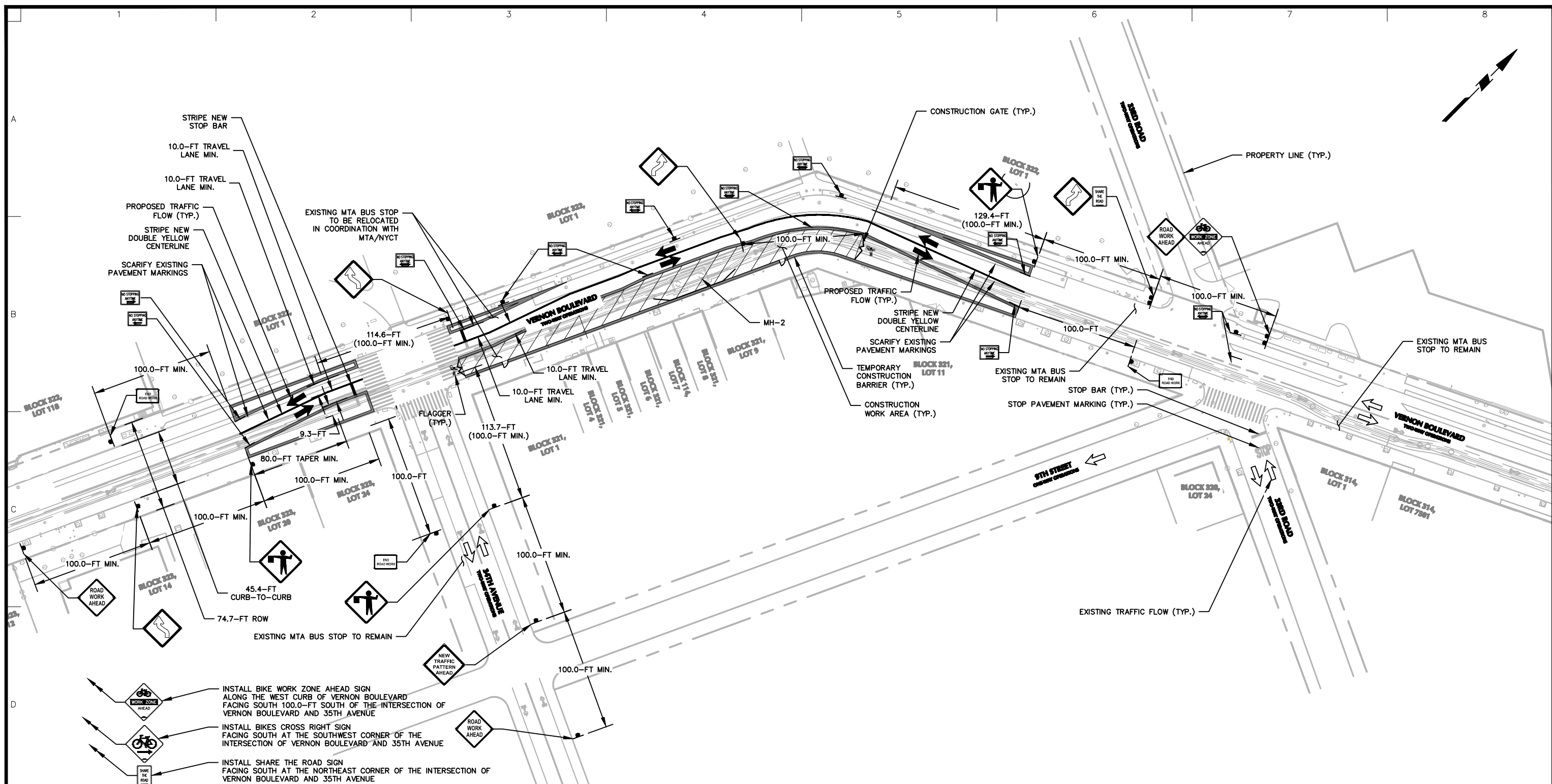
- LEGEND:**
- PROPERTY LINE
 - TRAFFIC FLOW DIRECTION
 - TEMPORARY CONSTRUCTION SIGN (NYC DOT ITEM 6.25)
 - WOODEN OR WATER-FILLED YODOCK CONFORMING TO NYC DOT STANDARD
 - CONSTRUCTION STAGING/WORK AREA
 - FLAGGER

- GENERAL NOTES:**
1. BACKGROUND INFORMATION OBTAINED FROM A FIELD SURVEY CONDUCTED BY LANGAN ENGINEERING, ENVIRONMENTAL, SURVEYING, LANDSCAPE ARCHITECTURE AND GEOLOGY, D.P.C. IN MARCH 2023.
 2. SURVEY INFORMATION SUPPLEMENTED WITH PAVEMENT MARKINGS OBTAINED FROM GOOGLE MAPS AND BING MAPS AERIAL IMAGERY.
 3. REFER TO DWG. K-110 FOR EXISTING ROADWAY CONDITIONS AND ON-STREET PARKING REGULATIONS.
 4. ALL TEMPORARY TRAFFIC CONTROL DEVICES SHOWN ON THIS PLAN SHOULD BE IMPLEMENTED IN ACCORDANCE WITH THE PROCEDURES AND GUIDELINES OUTLINED ON DWG. K-002.
 5. TEMPORARY TRAFFIC CONTROL DEVICES SHOWN ON THIS PLAN FACILITATE TYPICAL DUCTBANK AND MH-8 CONSTRUCTION ALONG 20TH AVENUE BETWEEN 21ST STREET AND 23RD STREET; AND CABLE PULLING AND CABLE SPlicing OPERATIONS AT MH-8. THE MPT DESIGN AND METHODOLOGY SHOWN ON THIS PLAN SHOULD BE UTILIZED TO FACILITATE TYPICAL DUCTBANK CONSTRUCTION ALONG THE REMAINING SEGMENTS OF VERNON BOULEVARD.
 6. REFER TO DWG. K-002 FOR TYPICAL DUCTBANK AND MANHOLE CONSTRUCTION ACTIVITY WORK HOURS; AND FOR CABLE PULLING AND CABLE SPlicing CONSTRUCTION ACTIVITY WORK HOURS AT MH-8. TYPICAL DUCTBANK CONSTRUCTION DURATION WILL BE APPROXIMATELY ONE MONTH PER STREET BLOCK. MANHOLE CONSTRUCTION DURATION WILL BE APPROXIMATELY TWO MONTHS PER MANHOLE. CABLE PULLING AND CABLE SPlicing CONSTRUCTION DURATION WILL BE APPROXIMATELY TWO WEEKS FOR EACH RESPECTIVE PHASE AT EACH MANHOLE.
 7. CITIBIKE STANDS ALONG 20TH AVENUE WILL BE RELOCATED IN COORDINATION WITH NYC DOT, AS NEEDED, WHEN TEMPORARY TRAFFIC CONTROL DEVICES REQUIRED TO FACILITATE TYPICAL DUCTBANK AND MANHOLE CONSTRUCTION ARE SET UP IN LOCATIONS THAT CONFLICT WITH EXISTING CITIBIKE STANDS.
 8. BUS STOPS ALONG 20TH AVENUE WILL BE RELOCATED IN COORDINATION WITH THE MTA/NYCT, AS NEEDED, WHEN TEMPORARY TRAFFIC CONTROL DEVICES REQUIRED TO FACILITATE TYPICAL DUCTBANK AND MANHOLE CONSTRUCTION ARE SET UP IN LOCATIONS THAT CONFLICT WITH EXISTING BUS STOPS.
 9. THE MPT DRAWING SET (DWG. K-001 - K-303) AND PROPOSED TEMPORARY TRAFFIC CONTROL DEVICES (DWG. K-201 - K-303) ARE SUBJECT TO REVIEW AND APPROVAL FROM NYC DOT'S OCMC.



WARNING: IT IS A VIOLATION OF THE NYS EDUCATION LAW ARTICLE 145 FOR ANY PERSON, UNLESS HE OR SHE IS ACTING UNDER THE DIRECTION OF A LICENSED PROFESSIONAL ENGINEER, LAND SURVEYOR OR GEOLOGIST, TO ALTER THIS ITEM IN ANY WAY.

<p>LANGAN Langan Engineering, Environmental, Surveying, Landscape Architecture, and Geology, D.P.C. One North Broadway, Suite 910 White Plains, NY 10601 T: 914.323.7400 F: 914.323.7401 www.langan.com</p>	<p>Project CHPE ARC PROJECT 3.5 MILE UG TRANSMISSION</p>	<p>Drawing Title MPT - TYPICAL DUCTBANK & MH-8 CONSTRUCTION - 20TH AVE</p>	<p>Project No. 19008801</p>	<p>Drawing No. K-209</p>
	<p>Queens County Astoria New York</p>	<p>Date 2024-03-27</p>	<p>Drawn By NST</p>	<p>Checked By AP</p>



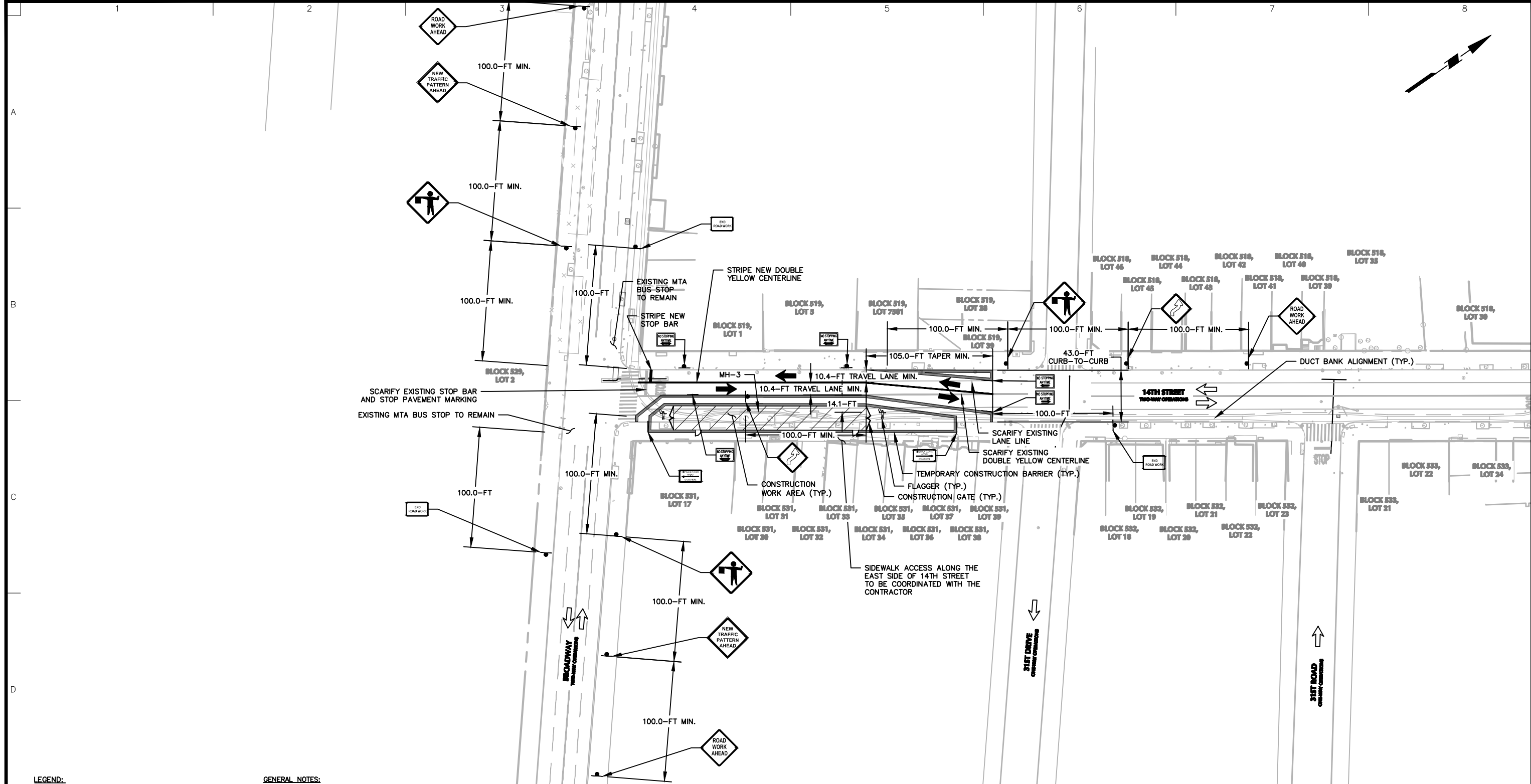
- LEGEND:**
- PROPERTY LINE
 - TRAFFIC FLOW DIRECTION
 - TEMPORARY CONSTRUCTION SIGN (NYC DOT ITEM 6.25)
 - WOODEN OR WATER-FILLED YODOCK CONSTRUCTION BARRIER CONFORMING TO NYC DOT STANDARD
 - CONSTRUCTION STAGING/WORK AREA
 - FLAGGER

- GENERAL NOTES:**
1. BACKGROUND INFORMATION OBTAINED FROM A FIELD SURVEY CONDUCTED BY LANGAN ENGINEERING, ENVIRONMENTAL, SURVEYING, LANDSCAPE ARCHITECTURE AND GEOLOGY, D.P.C. IN MARCH 2023.
 2. SURVEY INFORMATION SUPPLEMENTED WITH PAVEMENT MARKINGS OBTAINED FROM GOOGLE MAPS AND BING MAPS AERIAL IMAGERY.
 3. REFER TO DWG. K-101 FOR EXISTING ROADWAY CONDITIONS AND ON-STREET PARKING REGULATIONS.
 4. ALL TEMPORARY TRAFFIC CONTROL DEVICES SHOWN ON THIS PLAN SHOULD BE IMPLEMENTED IN ACCORDANCE WITH THE PROCEDURES AND GUIDELINES OUTLINED ON DWG. K-002.
 5. TEMPORARY TRAFFIC CONTROL DEVICES SHOWN ON THIS PLAN FACILITATE MH-2 CONSTRUCTION ALONG VERNON BOULEVARD BETWEEN 33RD ROAD AND 34TH AVENUE; AND CABLE PULLING AND CABLE SPLICING OPERATIONS AT MH-2.
 6. REFER TO DWG. K-002 FOR TYPICAL MANHOLE CONSTRUCTION ACTIVITY WORK HOURS; AND FOR CABLE PULLING AND CABLE SPLICING CONSTRUCTION ACTIVITY WORK HOURS AT MH-2. MANHOLE CONSTRUCTION DURATION WILL BE APPROXIMATELY TWO MONTHS PER MANHOLE. CABLE PULLING AND CABLE SPLICING CONSTRUCTION DURATION WILL BE APPROXIMATELY TWO WEEKS FOR EACH RESPECTIVE PHASE AT EACH MANHOLE.
 7. CITIBIKE STANDS ALONG VERNON BOULEVARD WILL BE RELOCATED IN COORDINATION WITH NYC DOT, AS NEEDED, WHEN TEMPORARY TRAFFIC CONTROL DEVICES REQUIRED TO FACILITATE MANHOLE CONSTRUCTION ARE SET UP IN LOCATIONS THAT CONFLICT WITH EXISTING CITIBIKE STANDS.
 8. BUS STOPS ALONG VERNON BOULEVARD WILL BE RELOCATED IN COORDINATION WITH THE MTA/NYCT, AS NEEDED, WHEN TEMPORARY TRAFFIC CONTROL DEVICES REQUIRED TO FACILITATE MANHOLE CONSTRUCTION ARE SET UP IN LOCATIONS THAT CONFLICT WITH EXISTING BUS STOPS.
 9. THE MPT DRAWING SET (DWG. K-001 - K-303) AND PROPOSED TEMPORARY TRAFFIC CONTROL DEVICES (DWG. K-201 - K-303) ARE SUBJECT TO REVIEW AND APPROVAL FROM NYC DOT'S OCMC.



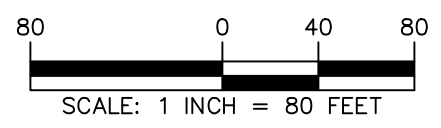
WARNING: IT IS A VIOLATION OF THE NYS EDUCATION LAW ARTICLE 145 FOR ANY PERSON, UNLESS HE OR SHE IS ACTING UNDER THE DIRECTION OF A LICENSED PROFESSIONAL ENGINEER, LAND SURVEYOR OR GEOLOGIST, TO ALTER THIS ITEM IN ANY WAY.

 Langan Engineering, Environmental, Surveying, Landscape Architecture, and Geology, D.P.C. One North Broadway, Suite 910 White Plains, NY 10601 T: 914.323.7400 F: 914.323.7401 www.langan.com	Project CHPE ARC PROJECT 3.5 MILE UG TRANSMISSION ASTORIA NEW YORK	Drawing Title MPT - MH-2 CONSTRUCTION - VERNON BLVD	Project No. 190088801	Drawing No. K-301
			Date 2024-03-27	Drawn By NST
			Checked By AP	Sheet 23 of 25



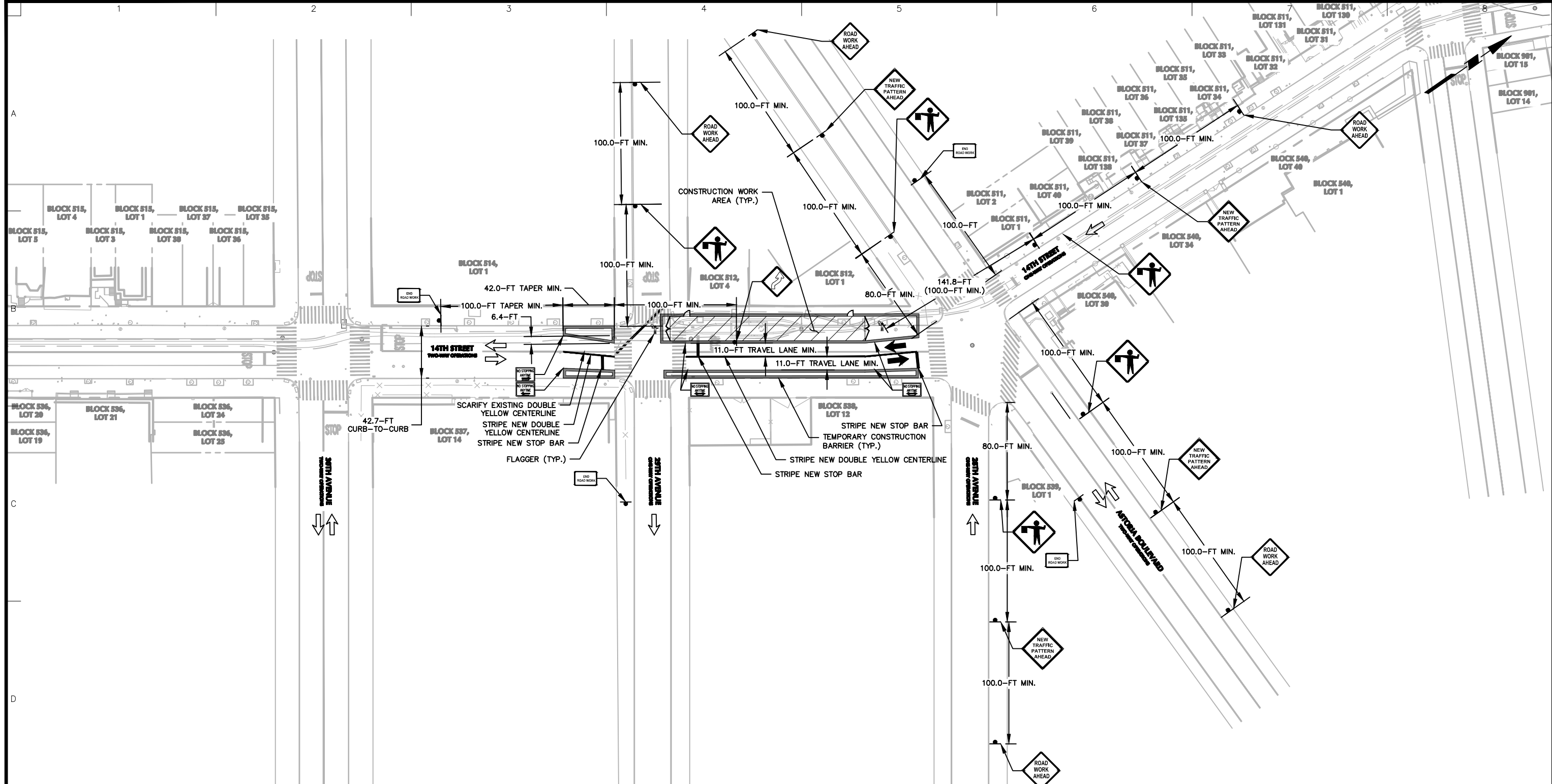
- LEGEND:**
- PROPERTY LINE
 - TRAFFIC FLOW DIRECTION
 - TEMPORARY CONSTRUCTION SIGN (NYC DOT ITEM 6.25)
 - WOODEN OR WATER-FILLED YODOCK CONSTRUCTION BARRIER CONFORMING TO NYC DOT STANDARD
 - CONSTRUCTION STAGING/WORK AREA
 - FLAGGER

- GENERAL NOTES:**
1. BACKGROUND INFORMATION OBTAINED FROM A FIELD SURVEY CONDUCTED BY LANGAN ENGINEERING, ENVIRONMENTAL, SURVEYING, LANDSCAPE ARCHITECTURE AND GEOLOGY, D.P.C. IN MARCH 2023.
 2. SURVEY INFORMATION SUPPLEMENTED WITH PAVEMENT MARKINGS OBTAINED FROM GOOGLE MAPS AND BING MAPS AERIAL IMAGERY.
 3. REFER TO DWG. K-103 FOR EXISTING ROADWAY CONDITIONS AND ON-STREET PARKING REGULATIONS.
 4. ALL TEMPORARY TRAFFIC CONTROL DEVICES SHOWN ON THIS PLAN SHOULD BE IMPLEMENTED IN ACCORDANCE WITH THE PROCEDURES AND GUIDELINES OUTLINED ON DWG. K-002.
 5. TEMPORARY TRAFFIC CONTROL DEVICES SHOWN ON THIS PLAN FACILITATE MH-3 CONSTRUCTION ALONG 14TH STREET BETWEEN BROADWAY AND 31ST DRIVE; AND CABLE PULLING AND CABLE SPLICING OPERATIONS AT MH-3.
 6. REFER TO DWG. K-002 FOR TYPICAL MANHOLE CONSTRUCTION ACTIVITY WORK HOURS; AND FOR CABLE PULLING AND CABLE SPLICING CONSTRUCTION ACTIVITY WORK HOURS AT MH-3. MANHOLE CONSTRUCTION DURATION WILL BE APPROXIMATELY TWO MONTHS PER MANHOLE. CABLE PULLING AND CABLE SPLICING CONSTRUCTION DURATION WILL BE APPROXIMATELY TWO WEEKS FOR EACH RESPECTIVE PHASE AT EACH MANHOLE.
 7. CITIBIKE STANDS ALONG 14TH STREET WILL BE RELOCATED IN COORDINATION WITH NYC DOT, AS NEEDED, WHEN TEMPORARY TRAFFIC CONTROL DEVICES REQUIRED TO FACILITATE MANHOLE CONSTRUCTION ARE SET UP IN LOCATIONS THAT CONFLICT WITH EXISTING CITIBIKE STANDS.
 8. BUS STOPS ALONG 14TH STREET WILL BE RELOCATED IN COORDINATION WITH THE MTA/NYCT, AS NEEDED, WHEN TEMPORARY TRAFFIC CONTROL DEVICES REQUIRED TO FACILITATE MANHOLE CONSTRUCTION ARE SET UP IN LOCATIONS THAT CONFLICT WITH EXISTING BUS STOPS.
 9. THE MPT DRAWING SET (DWG. K-001 - K-303) AND PROPOSED TEMPORARY TRAFFIC CONTROL DEVICES (DWG. K-201 - K-303) ARE SUBJECT TO REVIEW AND APPROVAL FROM NYC DOT'S OCMC.



WARNING: IT IS A VIOLATION OF THE NYS EDUCATION LAW ARTICLE 145 FOR ANY PERSON, UNLESS HE OR SHE IS ACTING UNDER THE DIRECTION OF A LICENSED PROFESSIONAL ENGINEER, LAND SURVEYOR OR GEOLOGIST, TO ALTER THIS ITEM IN ANY WAY.

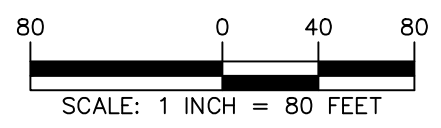
 Langan Engineering, Environmental, Surveying, Landscape Architecture, and Geology, D.P.C. One North Broadway, Suite 910 White Plains, NY 10601 T: 914.323.7400 F: 914.323.7401 www.langan.com	Project CHPE ARC PROJECT 3.5 MILE UG TRANSMISSION QUEENS COUNTY ASTORIA NEW YORK	Drawing Title MPT - MH-3 CONSTRUCTION - 14TH ST	Project No. 19008801	Drawing No. K-302
			Date 2024-03-27	Sheet 24 of 25
		Drawn By NST	Checked By AP	



LEGEND:

	PROPERTY LINE
	TRAFFIC FLOW DIRECTION
	TEMPORARY CONSTRUCTION SIGN (NYC DOT ITEM 6.25)
	WOODEN OR WATER-FILLED YODOCK CONSTRUCTION BARRIER CONFORMING TO NYC DOT STANDARD
	CONSTRUCTION STAGING/WORK AREA
	FLAGGER

- GENERAL NOTES:**
- BACKGROUND INFORMATION OBTAINED FROM A FIELD SURVEY CONDUCTED BY LANGAN ENGINEERING, ENVIRONMENTAL, SURVEYING, LANDSCAPE ARCHITECTURE AND GEOLOGY, D.P.C. IN MARCH 2023.
 - SURVEY INFORMATION SUPPLEMENTED WITH PAVEMENT MARKINGS OBTAINED FROM GOOGLE MAPS AND BING MAPS AERIAL IMAGERY.
 - REFER TO DWG. K-105 FOR EXISTING ROADWAY CONDITIONS AND ON-STREET PARKING REGULATIONS.
 - ALL TEMPORARY TRAFFIC CONTROL DEVICES SHOWN ON THIS PLAN SHOULD BE IMPLEMENTED IN ACCORDANCE WITH THE PROCEDURES AND GUIDELINES OUTLINED ON DWG. K-002.
 - TEMPORARY TRAFFIC CONTROL DEVICES SHOWN ON THIS PLAN FACILITATE MH-4 CONSTRUCTION ALONG 14TH STREET BETWEEN 28TH AND 29TH AVENUES; AND CABLE PULLING AND CABLE SPLICING OPERATIONS AT MH-4.
 - REFER TO DWG. K-002 FOR TYPICAL MANHOLE CONSTRUCTION ACTIVITY WORK HOURS; AND FOR CABLE PULLING AND CABLE SPLICING CONSTRUCTION ACTIVITY WORK HOURS AT MH-4. MANHOLE CONSTRUCTION DURATION WILL BE APPROXIMATELY TWO MONTHS PER MANHOLE. CABLE PULLING AND CABLE SPLICING CONSTRUCTION DURATION WILL BE APPROXIMATELY TWO WEEKS FOR EACH RESPECTIVE PHASE AT EACH MANHOLE.
 - CITIBIKE STANDS ALONG 14TH STREET WILL BE RELOCATED IN COORDINATION WITH NYC DOT, AS NEEDED, WHEN TEMPORARY TRAFFIC CONTROL DEVICES REQUIRED TO FACILITATE MANHOLE CONSTRUCTION ARE SET UP IN LOCATIONS THAT CONFLICT WITH EXISTING CITIBIKE STANDS.
 - BUS STOPS ALONG 14TH STREET WILL BE RELOCATED IN COORDINATION WITH THE MTA/NYCT, AS NEEDED, WHEN TEMPORARY TRAFFIC CONTROL DEVICES REQUIRED TO FACILITATE MANHOLE CONSTRUCTION ARE SET UP IN LOCATIONS THAT CONFLICT WITH EXISTING BUS STOPS.
 - THE MPT DRAWING SET (DWG. K-001 - K-303) AND PROPOSED TEMPORARY TRAFFIC CONTROL DEVICES (DWG. K-201 - K-303) ARE SUBJECT TO REVIEW AND APPROVAL FROM NYC DOT'S OCMC.



WARNING: IT IS A VIOLATION OF THE NYS EDUCATION LAW ARTICLE 145 FOR ANY PERSON, UNLESS HE OR SHE IS ACTING UNDER THE DIRECTION OF A LICENSED PROFESSIONAL ENGINEER, LAND SURVEYOR OR GEOLOGIST, TO ALTER THIS ITEM IN ANY WAY.

<p>LANGAN Langan Engineering, Environmental, Surveying, Landscape Architecture, and Geology, D.P.C. One North Broadway, Suite 910 White Plains, NY 10601 T: 914.323.7400 F: 914.323.7401 www.langan.com</p>	<p>Project CHPE ARC PROJECT 3.5 MILE UG TRANSMISSION</p>	<p>Drawing Title MPT - MH-4 CONSTRUCTION - 14TH ST</p>	<p>Project No. 19008801</p>	<p>Drawing No. K-303</p>
	<p>Queens County Astoria New York</p>	<p>Date 2024-03-27</p>	<p>Drawn By NST</p>	<p>Checked By AP</p>