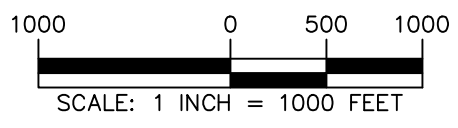




LANGAN

Project No. 190088801

WARNING: IT IS A VIOLATION OF THE NYS EDUCATION LAW ARTICLE 145 FOR ANY PERSON, UNLESS HE OR SHE IS ACTING UNDER THE DIRECTION OF A LICENSED PROFESSIONAL ENGINEER, LAND SURVEYOR OR GEOLOGIST, TO ALTER THIS ITEM IN ANY WAY.



LANGAN
 Langan Engineering, Environmental, Surveying,
 Landscape Architecture, and Geology, D.P.C.
 One North Broadway, Suite 910
 White Plains, NY 10601
 T: 914.323.7400 F: 914.323.7401 www.langan.com

Project
CHPE ARC PROJECT
3.5 MILE UG
TRANSMISSION
 ASTORIA
 QUEENS COUNTY NEW YORK

Drawing Title
AERIAL KEY MAP

Project No.	190088801
Date	2024-03-27
Drawn By	NST
Checked By	AP

Drawing No.
K-001
 Sheet 1 of 25

© 2023 Langan

**GENERAL MAINTENANCE AND PROTECTION OF TRAFFIC
(MPT) NOTES (APPLICABLE TO ALL PHASES)**

1. THE CONTRACTOR SHALL NOTIFY THE NEW YORK CITY (NYC) DEPARTMENT OF TRANSPORTATION (DOT) OFFICE OF CONSTRUCTION MITIGATION AND COORDINATION (OCMC) (TELEPHONE NO. 212-839-9621) AND THE DIVISION OF TRAFFIC OPERATIONS (TELEPHONE NO. 718-433-3370) AT LEAST 20 DAYS BEFORE THE START OF CONSTRUCTION TO SCHEDULE A PRE-CONSTRUCTION MEETING. TEMPORARY SIGNS SHALL NOT BE INSTALLED MORE THAN 24 HOURS PRIOR TO START OF CONSTRUCTION.

GENERAL NOTES REGARDING MPT MATERIALS AND INSTALLATION:

1. ALL TRAFFIC CONTROL DEVICES FOR THE MAINTENANCE AND PROTECTION OF TRAFFIC (MPT) SHALL CONFORM TO THE NATIONAL "MANUAL OF UNIFORM TRAFFIC CONTROL DEVICES" (MUTCD), WITH THE N.Y.S. SUPPLEMENT AND NYC DOT STANDARD SPECIFICATIONS WITH CURRENT AMENDMENTS.
2. SIGNS TO BE MOUNTED ON EXISTING POLES OR ON PORTABLE AND TEMPORARY MOUNTINGS CONFORMING WITH THE MUTCD.
3. REFER TO THE NYC DOT STANDARD SPECIFICATIONS FOR MPT MATERIALS FOR INSTALLATION OF THE FOLLOWING: **(A) CONSTRUCTION SIGNS (SECTION 6.25); (B) CHAIN LINK FENCE (SECTION 6.34); (C) TEMPORARY PAVEMENT MARKINGS (SECTION 6.49); AND (D) TEMPORARY CONCRETE BARRIER (SECTION 6.59P).**

GENERAL NOTES REGARDING CONTRACTOR ACTIVITIES:

1. ALL CONTRACTOR'S VEHICLES, EQUIPMENT AND PERSONNEL MUST BE KEPT WITHIN THE DESIGNATED WORK AREA LIMITS.
2. THE CONTRACTOR SHALL COORDINATE HIS/HER WORK WITH THAT BEING DONE BY OTHERS WITHIN THE PROJECT LIMITS.
3. IT IS THE CONTRACTOR'S RESPONSIBILITY TO COORDINATE WITH OTHER CONTRACTORS WHO HAVE ON-GOING STREET IMPROVEMENT CONSTRUCTION IN THE AREA AND SHALL SO ACCORDINGLY ARRANGE HIS/HER OWN SCHEDULE OF CONSTRUCTION IN SUCH A TIME FRAME AS NOT TO DISRUPT OR INTERFERE WITH THE WORKABILITY OF THE MAINTENANCE OF TRAFFIC PLAN.

GENERAL NOTES REGARDING PEDESTRIANS AND ACCESS TO ADJACENT PROPERTIES:

1. ALL BOUNDARIES BETWEEN CONSTRUCTION WORK AREAS AND PEDESTRIAN ROUTES ALONG SIDEWALKS SHALL BE CLEARLY AND CONTINUOUSLY DELINEATED DURING ALL STAGES OF WORK.
2. THE CONTRACTOR SHALL COORDINATE WITH ADJACENT PROPERTY OWNERS TO MAINTAIN ACCESS/EGRESS FOR PEDESTRIANS AND VEHICLES TO BUILDING ENTRANCES AND LOADING DOCKS THAT FALL WITHIN PROJECT LIMITS.

NEW YORK CITY TRANSIT BUS OPERATIONS:

1. WITH ANY OPERATIONS THAT MAY POTENTIALLY AFFECT ANY BUS ROUTES, THE CONTRACTOR SHALL CONTACT MS. SARAH WYSS, NYC TRANSIT (SARAH.WYSS@NYCT.COM OR 646-252-5517) AND NYC DOT OCMC NO LESS THAN FIVE WEEKS PRIOR TO ARRANGE A PRE-CONSTRUCTION MEETING TO DISCUSS MPT AND/OR POTENTIAL BUS DETOURS.

GENERAL NOTES REGARDING CONSTRUCTION ACTIVITY WORK HOURS:

1. TEMPORARY TRAFFIC CONTROL DEVICES PROPOSED TO FACILITATE DUCTBANK AND MANHOLE CONSTRUCTION ACTIVITIES WILL BE MOBILIZED AND DEMOBILIZED DAILY IN ACCORDANCE WITH THE WORK HOURS OUTLINED BELOW.
2. TEMPORARY TRAFFIC CONTROL DEVICES PROPOSED TO FACILITATE CABLE PULLING AND CABLE SPLICING OPERATIONS AT EACH MANHOLE LOCATION WILL REMAIN IN-PLACE THROUGHOUT THE DURATION OF THESE CONSTRUCTION ACITIVITIES.


3. FOR SEGMENTS WHERE AT LEAST ONE TRAVEL LANE IS MAINTAINED FOR EACH EXISTING DIRECTION OF TRAVEL, TYPICAL DUCTBANK AND MANHOLE CONSTRUCTION ACTIVITIES WILL OCCUR FROM 7:00 AM - 6:00 PM, MONDAY THROUGH FRIDAY; AND FROM 8:30 AM - 6:00 PM ON SATURDAYS WITH THE FOLLOWING EXCEPTIONS:
 - 3.1. DUCTBANK CONSTRUCTION ACTIVITIES ADJACENT TO COSTCO ALONG VERNON BOULEVARD (BETWEEN 10TH STREET AND BROADWAY) WILL ONLY OCCUR FROM 9:00 AM - 4:00 PM, MONDAY THROUGH FRIDAY.
 - 3.2. DUCTBANK AND MANHOLE CONSTRUCTION ACTIVITIES WITHIN INTERSECTIONS WILL ONLY OCCUR FROM 9:00 AM - 4:00 PM, MONDAY THROUGH FRIDAY; AND FROM 8:30 AM - 6:00 PM ON SATURDAYS WITH THE FOLLOWING EXCEPTION:
 - 3.2.1. DUCTBANK CONSTRUCTION ACTIVITIES WITHIN THE INTERSECTION OF VERNON BOULEVARD AND BROADWAY WILL ONLY OCCUR FROM 9:00 AM - 4:00 PM, MONDAY THROUGH FRIDAY.
 - 3.3. DUCTBANK AND MANHOLE CONSTRUCTION ACTIVITIES WITHIN BLOCKS AND INTERSECTIONS ADJACENT TO EXISTING SCHOOLS WILL ONLY TAKE PLACE FROM 9:00 AM - 2:00 PM, MONDAY THROUGH FRIDAY; AND FROM 8:30 AM - 6:00 PM ON SATURDAYS.
4. FOR SEGMENTS WITH COMPLETE ROADWAY CLOSURES THAT PROVIDE LOCAL RESIDENT AND EMERGENCY VEHICLE ACCESS ONLY, TYPICAL DUCTBANK AND MANHOLE CONSTRUCTION ACTIVITIES WILL OCCUR FROM 7:00 AM - 6:00 PM, MONDAY THROUGH FRIDAY; AND FROM 8:30 AM - 6:00 PM ON SATURDAYS WITH THE FOLLOWING EXCEPTIONS:
 - 4.1. DUCTBANK AND MANHOLE CONSTRUCTION ACTIVITIES ALONG SHORE BOULEVARD BETWEEN DITMARS BOULEVARD AND 20TH AVENUE WILL ONLY OCCUR FROM 9:00 AM - 4:00 PM, MONDAY THROUGH FRIDAY; AND FROM 8:30 AM - 5:30 PM ON SATURDAYS.
5. PROPOSED WORK HOURS ARE SUBJECT TO NYC DOT'S OCMC REVIEW AND APPROVAL.
6. DELIVERIES OCCURRING INSIDE THE BOUNDARIES OF THE CNY AND RELATED TO CONSTRUCTION ACTIVITIES SHALL TAKE PLACE BETWEEN 7 A.M. AND 6 P.M., EXCEPT THAT, TO THE EXTENT REQUIRED TO ACCOMMODATE OVERSIZED DELIVERY PURSUANT TO A NYCDOT PERMIT, THE CERTIFICATE HOLDERS SHALL BE EXEMPT FROM RESTRICTIONS LIMITING DELIVERY TO 7 A.M. TO 6 P.M. THIS CONDITION IS NOT INTENDED TO PROHIBIT NIGHTTIME DELIVERIES REASONABLY NECESSARY TO FACILITATE COMPLIANCE WITH RESTRICTIONS ON DAY TIME CONSTRUCTION IN OR ALONG ROADWAYS OR PUBLIC ACCESS AREAS OR TO REQUIRE THE CESSATION OF CONSTRUCTION ACTIVITIES THAT REQUIRE A CONTINUOUS WORK EFFORT ONCE STARTED.
7. CONSTRUCTION WORKERS OCCURRING INSIDE THE BOUNDARIES OF THE CNY AND OUTSIDE THE WALLS OF BUILDINGS WHOSE EXTERIOR WALLS AND ROOF ARE SUBSTANTIALLY COMPLETE SHALL TAKE PLACE BETWEEN 7 A.M. AND 6 P.M. AS REQUIRED BY SECTION 24-222 OF THE CNY CITY ADMINISTRATION CODE. FOR CERTAIN CONSTRUCTION PHASES AND ACTIVITIES, ADDITIONAL WORK HOURS MAY BE NECESSARY. NOTHING HEREIN SHALL PRECLUDE THE CERTIFICATE HOLDERS FROM MAKING NECESSARY ARRANGEMENTS FOR THE EXTENSION OF ADDITIONAL WORK WITH APPROPRIATE AUTHORITIES OF THE CNY. NOISE MITIGATION PROCEDURES SHALL FOLLOW THOSE SET FORTH IN THE APPROVED EM&CP AND SHALL NOT BE LESS STRINGENT THAN THE CITYWIDE CONSTRUCTION NOISE MITIGATION PROCEDURES PROVIDED BY THE CNY. DPS STAFF SHALL BE NOTIFIED AT LEAST 24 HOURS IN ADVANCE IF PLANNED WEEKEND, EVENING, OR HOLIDAY CONSTRUCTION BECOMES NECESSARY. THIS CONDITION IS NOT INTENDED TO COMPLY WITH RESTRICTIONS ON DAYTIME CONSTRUCTION ON OR ALONG ROADWAYS OR PUBLIC ACCESS AREAS OR TO REQUIRE THE CESSATION OF CONSTRUCTION ACTIVITIES THAT REQUIRE A CONTINUOUS WORK EFFORT ONCE STARTED. FURTHERMORE, CONSTRUCTION VEHICLES USED IN CNY WILL BE OUTFITTED WITH SMART BACK UP ALARMS.
8. PARKING FOR CONSTRUCTION WORKERS SHALL BE IN DESIGNATED AREAS THAT DO NOT INTERFERE WITH NORMAL TRAFFIC, CAUSE A SAFETY HAZARD, OR INTERFERE WITH EXISTING LAND USES, INCLUDING CI.

**NYC DOT OFFICE OF CONSTRUCTION MITIGATION
AND COORDINATION (OCMC) STIPULATIONS**

1. NYC DOT OCMC STIPULATIONS TO BE PROVIDED UPON APPROVAL OF PROPOSED MPT PLANS.

ABBREVIATION TABLE	
CODE	DESCRIPTION
DWG	DRAWING
MH	MANHOLE
MPT	MAINTENANCE AND PROTECTION OF TRAFFIC
MTA	METROPOLITAN TRANSPORTATION AUTHORITY
MUTCD	MANUAL OF UNIFORM TRAFFIC CONTROL DEVICES
NYC DOT	NEW YORK CITY DEPARTMENT OF TRANSPORTATION
NYCT	NEW YORK CITY TRANSIT
OCMC	OFFICE OF CONSTRUCTION MITIGATION AND COORDINATION
ROW	RIGHT OF WAY

WARNING: IT IS A VIOLATION OF THE NYS EDUCATION LAW ARTICLE 145 FOR ANY PERSON, UNLESS HE OR SHE IS ACTING UNDER THE DIRECTION OF A LICENSED PROFESSIONAL ENGINEER, LAND SURVEYOR OR GEOLOGIST, TO ALTER THIS ITEM IN ANY WAY.

 Langan Engineering, Environmental, Surveying, Landscape Architecture, and Geology, D.P.C. One North Broadway, Suite 910 White Plains, NY 10601 T: 914.323.7400 F: 914.323.7401 www.langan.com	Project CHPE ARC PROJECT 3.5 MILE UG TRANSMISSION ASTORIA NEW YORK QUEENS COUNTY	Drawing Title GENERAL NOTES, STIPULATIONS & ABBREVIATIONS	Project No. 190088801	Drawing No. K-002	
			Date 2024-03-27		
			Drawn By NST		
			Checked By AP		Sheet 2 of 25

TEMPORARY TRAFFIC SIGNS TABLE

SIGN	MUTCD CODE	COLOR CODE	SIZE	DESCRIPTION
	R28A(S)	B	18" X 12"	NO STOPPING ANYTIME TO THE RIGHT
	R28A(S)	B	18" X 12"	NO STOPPING ANYTIME TO THE LEFT
	R28A(S)	B	18" X 12"	NO STOPPING ANYTIME IN BOTH DIRECTIONS
	R9-11	A	24" X 18"	SIDEWALK CLOSED AHEAD CROSS HERE TO THE RIGHT
	R9-11	A	24" X 18"	SIDEWALK CLOSED AHEAD CROSS HERE TO THE LEFT
	W20-1	A	36" X 36"	ROAD WORK AHEAD
	R9-9	A	24" X 12"	SIDEWALK CLOSED
	W20-7	A	36" X 36"	FLAGGER AHEAD
	G20-2	A	36" X 18"	END ROAD WORK
	W23-2	A	36" X 36"	NEW TRAFFIC PATTERN AHEAD
	W14-L	A	36" X 36"	REVERSE CURVE TO THE LEFT
	W14-L	A	36" X 36"	REVERSE CURVE TO THE RIGHT
	W6-3	A	36" X 36"	TWO-WAY TRAFFIC
	W14-1	A	36" X 36"	DEAD END
	SW-834 (NYCDOT)	A	30" X 30"	END

COLOR CODE LEGEND

CODE	DESCRIPTION
A	BLACK LEGEND AND BORDER ON AN ORANGE BACKGROUND
B	WHITE LEGEND AND BORDER ON A RED BACKGROUND
C	BLACK LEGEND AND BORDER ON A YELLOW BACKGROUND

NOTES

- ALL SIGNS AS PER LATEST EDITION OF THE NATIONAL "MANUAL ON UNIFORM TRAFFIC CONTROL DEVICES."
- DIMENSIONS ARE SHOWN IN INCHES AND ARE SHOWN AS WIDTH X HEIGHT.
- THESE TABLES ARE FOR REFERENCE PURPOSES ONLY. FOR ADDITIONAL SIGNAGE NOT SHOWN ON THESE TABLES (REFER TO THE MUTCD).
- ALL SIGNS TO BE REFLECTORIZED.
- LETTERS ON SIGNS TO BE 5" HIGH.
- SIGN LOCATION TO BE DETERMINED BY THE COMMISSIONER.
- MOUNTING OF SIGNS TO BE AS DIRECTED AND APPROVED BY THE COMMISSIONER.

PARKING REGULATION TABLE

ID	REGULATION	DIRECTION
A	NO STOPPING ANYTIME	ARROW POINTING TO BOTH DIRECTIONS
B		ARROW POINTING TO THE LEFT
C		ARROW POINTING TO THE RIGHT
D	NO STANDING ANYTIME	ARROW POINTING TO BOTH DIRECTIONS
E		ARROW POINTING TO THE LEFT
F		ARROW POINTING TO THE RIGHT
G	NO STANDING (BUS STOP)	ARROW POINTING TO BOTH DIRECTIONS
H		ARROW POINTING TO THE LEFT
I		ARROW POINTING TO THE RIGHT
J	NO PARKING ANYTIME	ARROW POINTING TO BOTH DIRECTIONS
K		ARROW POINTING TO THE LEFT
L		ARROW POINTING TO THE RIGHT
M	PARKING PERMITTED (STREET CLEANING)	ARROW POINTING TO BOTH DIRECTIONS
N		ARROW POINTING TO THE LEFT
O		ARROW POINTING TO THE RIGHT
P	AUTHORIZED VEHICLES ONLY	ARROW POINTING TO BOTH DIRECTIONS
Q		ARROW POINTING TO THE LEFT
R		ARROW POINTING TO THE RIGHT
S	FARMERS MARKET ONLY	ARROW POINTING TO THE LEFT
T		ARROW POINTING TO THE RIGHT
U	NO STANDING MIDNIGHT TO 6AM	ARROW POINTING TO BOTH DIRECTIONS

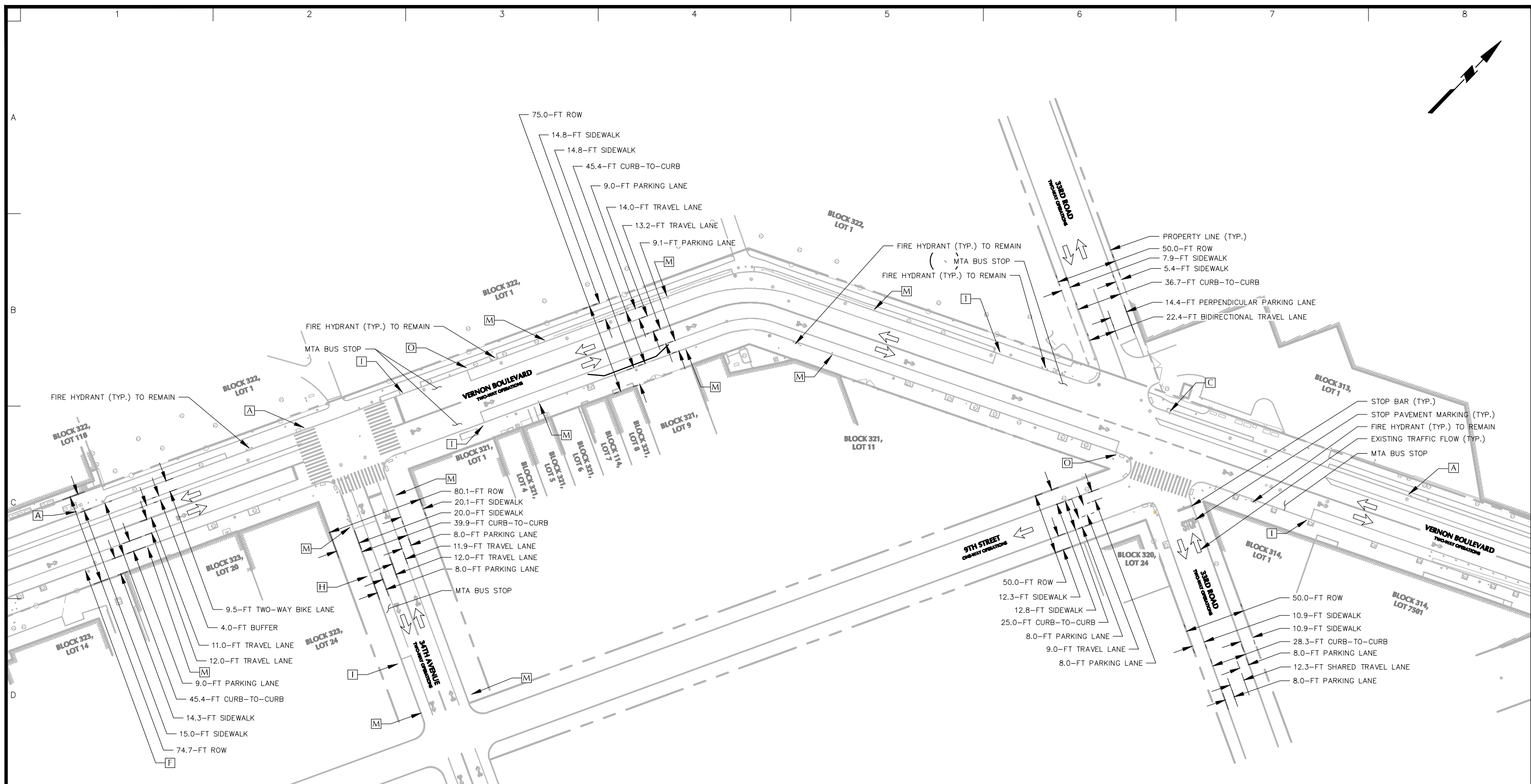
WARNING: IT IS A VIOLATION OF THE NYS EDUCATION LAW ARTICLE 145 FOR ANY PERSON, UNLESS HE OR SHE IS ACTING UNDER THE DIRECTION OF A LICENSED PROFESSIONAL ENGINEER, LAND SURVEYOR OR GEOLOGIST, TO ALTER THIS ITEM IN ANY WAY.

LANGAN
 Langan Engineering, Environmental, Surveying,
 Landscape Architecture, and Geology, D.P.C.
 One North Broadway, Suite 910
 White Plains, NY 10601
 T: 914.323.7400 F: 914.323.7401 www.langan.com

Project
CHPE ARC PROJECT
3.5 MILE UG
TRANSMISSION
 ASTORIA NEW YORK
 QUEENS COUNTY

Drawing Title
MPT SIGNAGE &
EXISTING PARKING
REGULATIONS

Project No. 190088801	Drawing No.
Date 2024-03-27	K-003
Drawn By NST	
Checked By AP	
Sheet 3 of 25	



LEGEND:

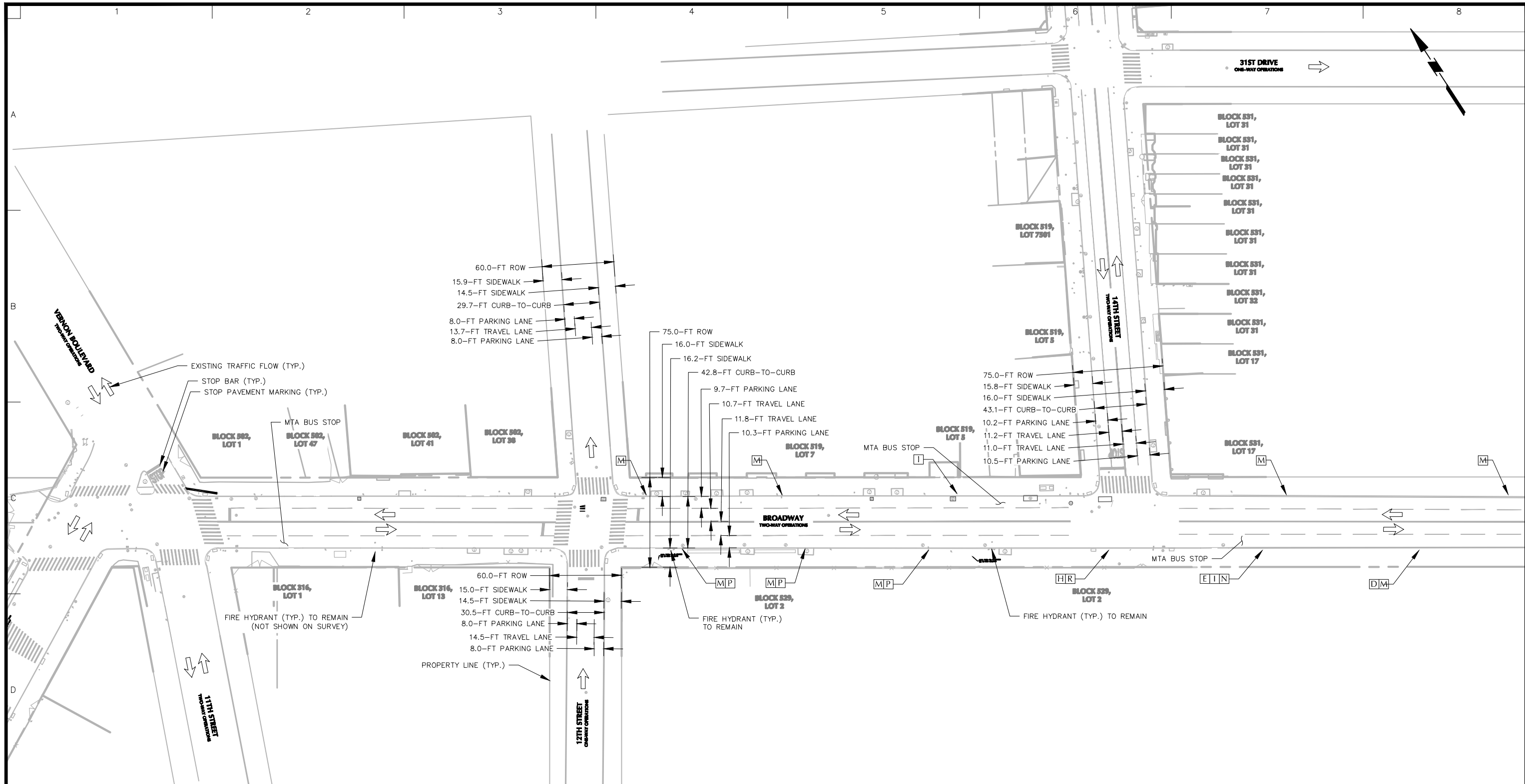
	PROPERTY LINE
	EXISTING TRAFFIC FLOW DIRECTION
	ON-STREET PARKING REGULATION ID

- GENERAL NOTES:**
1. BACKGROUND INFORMATION OBTAINED FROM A FIELD SURVEY CONDUCTED BY LANGAN ENGINEERING, ENVIRONMENTAL, SURVEYING, LANDSCAPE ARCHITECTURE AND GEOLOGY, D.P.C. IN MARCH 2023.
 2. SURVEY INFORMATION SUPPLEMENTED WITH PAVEMENT MARKINGS, AS NEEDED, OBTAINED FROM GOOGLE MAPS AND BING MAPS AERIAL IMAGERY.
 3. EXISTING ROADWAY CONDITIONS SHOWN FOR TYPICAL DUCT BANK CONSTRUCTION (SEE DWG. K-201) AND MH-2 CONSTRUCTION (SEE DWG. K-301) ALONG VERNON BOULEVARD.
 4. EXISTING ON-STREET PARKING REGULATIONS OBTAINED FROM NYC DOT ONLINE DATABASE AND VERIFIED USING RECENT IMAGERY OBTAINED FROM GOOGLE MAPS STREETVIEW IMAGERY.
 5. EXISTING ON-STREET PARKING REGULATIONS ARE REPRESENTED USING LETTER IDS. SEE DWG. K-003 FOR CORRESPONDING PARKING REGULATIONS.
 6. THE MPT DRAWING SET (DWG. K-001 - K-303) AND PROPOSED TEMPORARY TRAFFIC CONTROL DEVICES (DWG. K-201 - K-303) ARE SUBJECT TO REVIEW AND APPROVAL FROM NYC DOT'S OCMC.



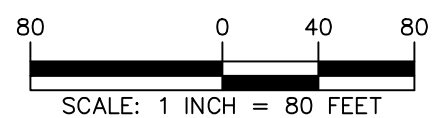
WARNING: IT IS A VIOLATION OF THE NYS EDUCATION LAW ARTICLE 145 FOR ANY PERSON, UNLESS HE OR SHE IS ACTING UNDER THE DIRECTION OF A LICENSED PROFESSIONAL ENGINEER, LAND SURVEYOR OR GEOLOGIST, TO ALTER THIS ITEM IN ANY WAY.

<p>LANGAN Langan Engineering, Environmental, Surveying, Landscape Architecture, and Geology, D.P.C. One North Broadway, Suite 910 White Plains, NY 10601 T: 914.323.7400 F: 914.323.7401 www.langan.com</p>	<p>Project CHPE ARC PROJECT 3.5 MILE UG TRANSMISSION</p>	<p>Drawing Title EXISTING ROADWAY CONDITIONS - UTILITY CONSTRUCTION - VERNON BLVD</p>	<p>Project No. 190088801</p>	<p>Drawing No. K-101</p>
	<p>Queens County New York</p>	<p>Date 2024-03-27</p>	<p>Drawn By NST</p>	<p>Checked By AP</p>



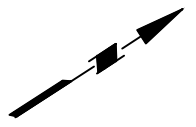
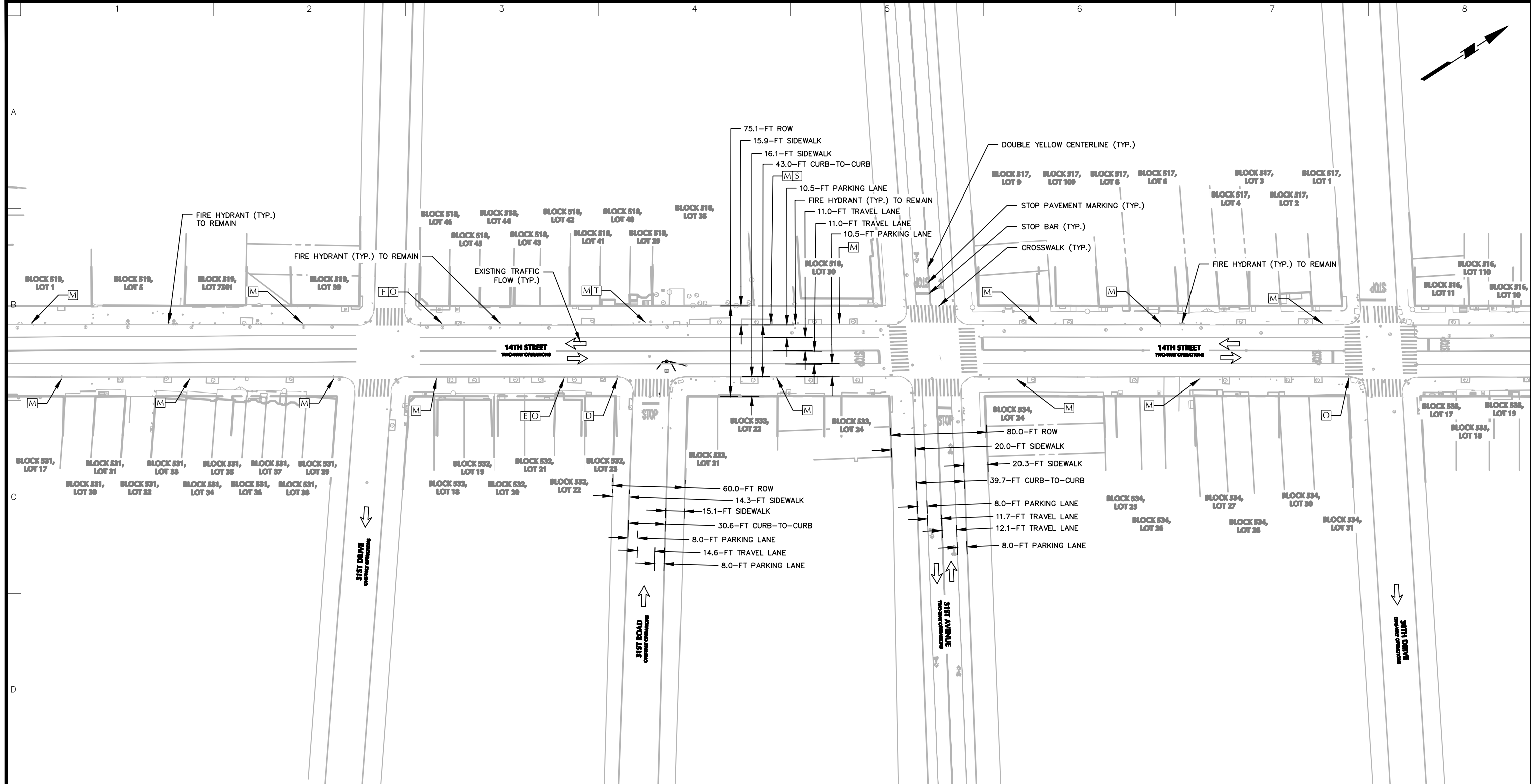
- LEGEND:**
- PROPERTY LINE
 - EXISTING TRAFFIC FLOW DIRECTION
 - ON-STREET PARKING REGULATION ID

- GENERAL NOTES:**
1. BACKGROUND INFORMATION OBTAINED FROM A FIELD SURVEY CONDUCTED BY LANGAN ENGINEERING, ENVIRONMENTAL, SURVEYING, LANDSCAPE ARCHITECTURE AND GEOLOGY, D.P.C. IN MARCH 2023.
 2. SURVEY INFORMATION SUPPLEMENTED WITH PAVEMENT MARKINGS OBTAINED FROM GOOGLE MAPS AND BING MAPS AERIAL IMAGERY.
 3. EXISTING ROADWAY CONDITIONS SHOWN FOR TYPICAL DUCT BANK CONSTRUCTION ALONG BROADWAY (SEE DWG. K-202).
 4. EXISTING ON-STREET PARKING REGULATIONS OBTAINED FROM NYC DOT ONLINE DATABASE AND VERIFIED USING RECENT IMAGERY OBTAINED FROM GOOGLE MAPS STREETVIEW IMAGERY.
 5. EXISTING ON-STREET PARKING REGULATIONS ARE REPRESENTED USING LETTER IDS. SEE SHEET K-003 FOR CORRESPONDING PARKING REGULATIONS.
 6. THE MPT DRAWING SET (DWG. K-001 - K-303) AND PROPOSED TEMPORARY TRAFFIC CONTROL DEVICES (DWG. K-201 - K-303) ARE SUBJECT TO REVIEW AND APPROVAL FROM NYC DOT'S OCMC.



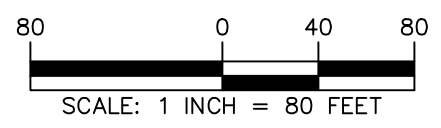
WARNING: IT IS A VIOLATION OF THE NYS EDUCATION LAW ARTICLE 145 FOR ANY PERSON, UNLESS HE OR SHE IS ACTING UNDER THE DIRECTION OF A LICENSED PROFESSIONAL ENGINEER, LAND SURVEYOR OR GEOLOGIST, TO ALTER THIS ITEM IN ANY WAY.

<p>LANGAN Langan Engineering, Environmental, Surveying, Landscape Architecture, and Geology, D.P.C. One North Broadway, Suite 910 White Plains, NY 10601 T: 914.323.7400 F: 914.323.7401 www.langan.com</p>	<p>Project CHPE ARC PROJECT 3.5 MILE UG TRANSMISSION</p>	<p>Drawing Title EXISTING ROADWAY CONDITIONS - UTILITY CONSTRUCTION - BROADWAY</p>	<p>Project No. 190088801</p>	<p>Drawing No. K-102</p>
	<p>Queens County New York</p>	<p>Date 2024-03-27</p>	<p>Drawn By NST</p>	<p>Checked By AP</p>



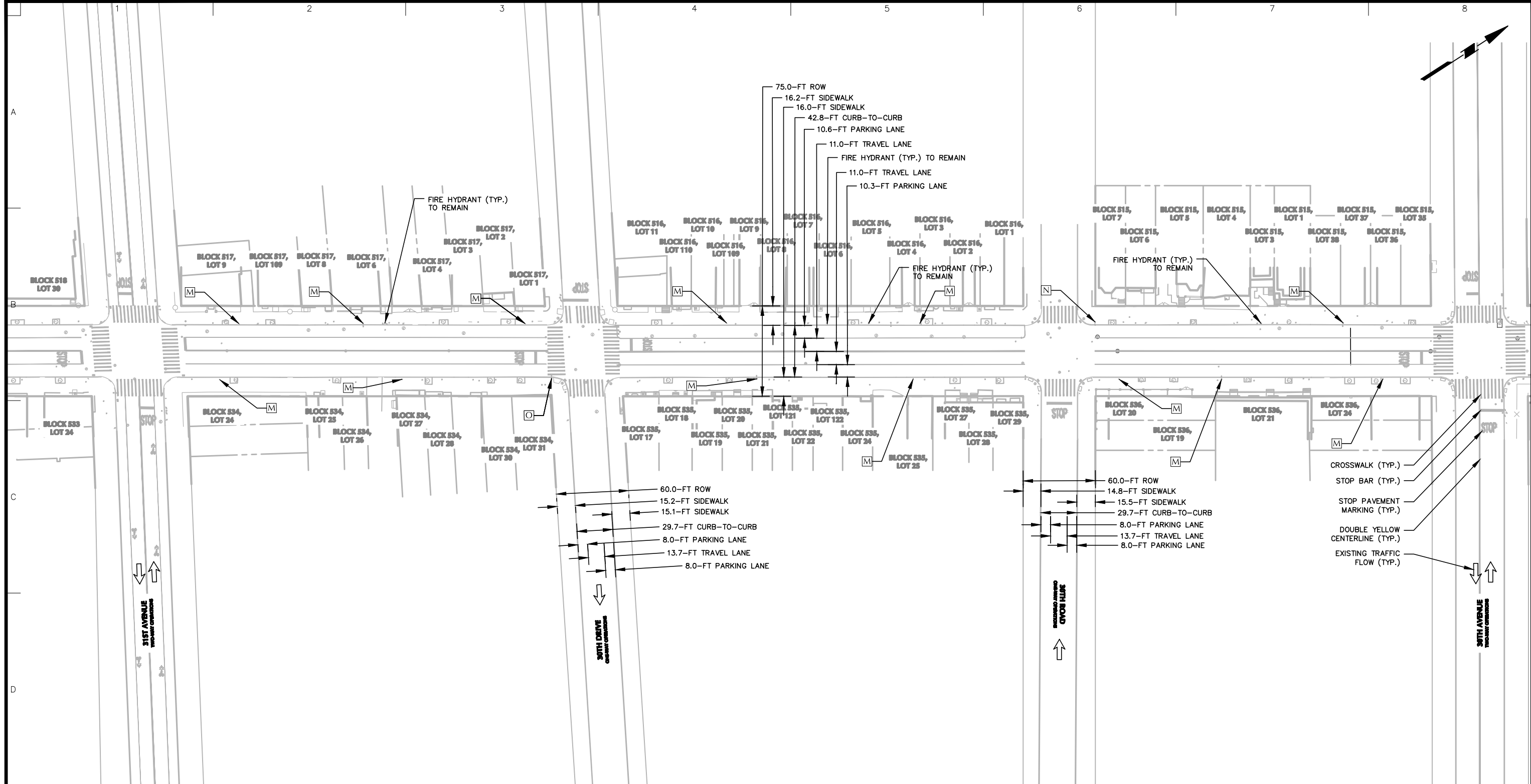
- LEGEND:**
- PROPERTY LINE
 - EXISTING TRAFFIC FLOW DIRECTION
 - ON-STREET PARKING REGULATION ID

- GENERAL NOTES:**
1. BACKGROUND INFORMATION OBTAINED FROM A FIELD SURVEY CONDUCTED BY LANGAN ENGINEERING, ENVIRONMENTAL, SURVEYING, LANDSCAPE ARCHITECTURE AND GEOLOGY, D.P.C. IN MARCH 2023.
 2. SURVEY INFORMATION SUPPLEMENTED WITH PAVEMENT MARKINGS OBTAINED FROM GOOGLE MAPS AND BING MAPS AERIAL IMAGERY.
 3. EXISTING ROADWAY CONDITIONS SHOWN FOR TYPICAL CURBSIDE DUCT BANK CONSTRUCTION (SEE DWG. K-203) AND MH-3 CONSTRUCTION (SEE DWG. K-302) ALONG 14TH STREET.
 4. EXISTING ON-STREET PARKING REGULATIONS OBTAINED FROM NYC DOT ONLINE DATABASE AND VERIFIED USING RECENT IMAGERY OBTAINED FROM GOOGLE MAPS STREETVIEW IMAGERY.
 5. EXISTING ON-STREET PARKING REGULATIONS ARE REPRESENTED USING LETTER IDS. SEE SHEET K-003 FOR CORRESPONDING PARKING REGULATIONS.
 6. THE MPT DRAWING SET (DWG. K-001 - K-303) AND PROPOSED TEMPORARY TRAFFIC CONTROL DEVICES (DWG. K-201 - K-303) ARE SUBJECT TO REVIEW AND APPROVAL FROM NYC DOT'S OCMC.



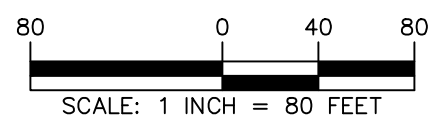
WARNING: IT IS A VIOLATION OF THE NYS EDUCATION LAW ARTICLE 145 FOR ANY PERSON, UNLESS HE OR SHE IS ACTING UNDER THE DIRECTION OF A LICENSED PROFESSIONAL ENGINEER, LAND SURVEYOR OR GEOLOGIST, TO ALTER THIS ITEM IN ANY WAY.

<p>Langan Engineering, Environmental, Surveying, Landscape Architecture, and Geology, D.P.C. One North Broadway, Suite 910 White Plains, NY 10601 T: 914.323.7400 F: 914.323.7401 www.langan.com</p>	<p>Project CHPE ARC PROJECT 3.5 MILE UG TRANSMISSION</p>	<p>Drawing Title EXISTING ROADWAY CONDITIONS - UTILITY CONSTRUCTION - 14TH STREET (31ST RD. - 31ST AVE.)</p>	<p>Project No. 19008801</p>	<p>Drawing No. K-103</p>
	<p>ASTORIA NEW YORK</p>	<p>Date 2024-03-27</p>	<p>Drawn By NST</p>	<p>Checked By AP</p>



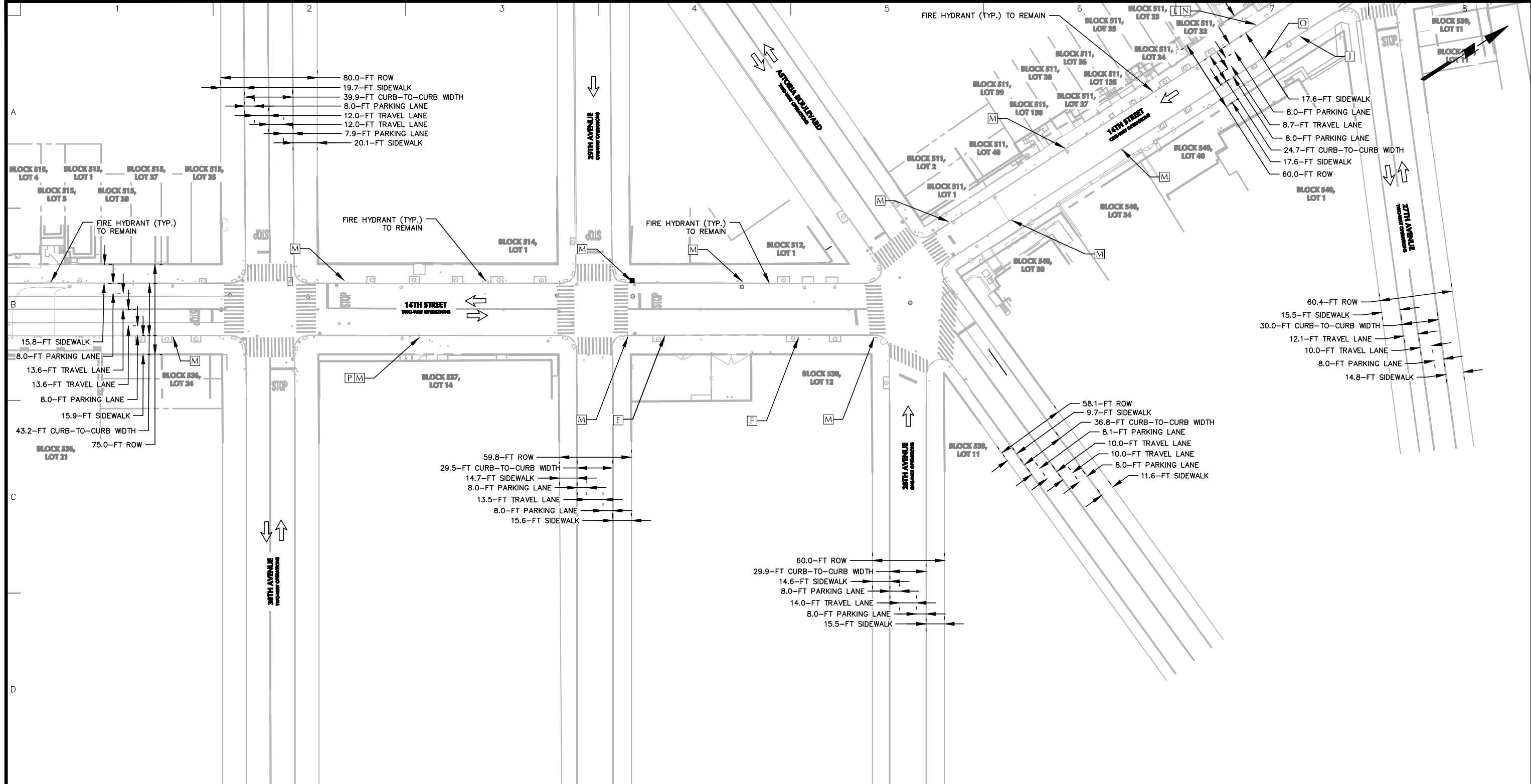
- LEGEND:**
- PROPERTY LINE
 - EXISTING TRAFFIC FLOW DIRECTION
 - ON-STREET PARKING REGULATION ID

- GENERAL NOTES:**
1. BACKGROUND INFORMATION OBTAINED FROM A FIELD SURVEY CONDUCTED BY LANGAN ENGINEERING, ENVIRONMENTAL, SURVEYING, LANDSCAPE ARCHITECTURE AND GEOLOGY, D.P.C. IN MARCH 2023.
 2. SURVEY INFORMATION SUPPLEMENTED WITH PAVEMENT MARKINGS OBTAINED FROM GOOGLE MAPS AND BING MAPS AERIAL IMAGERY.
 3. EXISTING ROADWAY CONDITIONS SHOWN FOR TYPICAL CENTERLINE DUCT BANK CONSTRUCTION ALONG 14TH STREET (SEE DWG. K-204).
 4. EXISTING ON-STREET PARKING REGULATIONS OBTAINED FROM NYC DOT ONLINE DATABASE AND VERIFIED USING RECENT IMAGERY OBTAINED FROM GOOGLE MAPS STREETVIEW IMAGERY.
 5. EXISTING ON-STREET PARKING REGULATIONS ARE REPRESENTED USING LETTER IDS. SEE SHEET K-003 FOR CORRESPONDING PARKING REGULATIONS.
 6. THE MPT DRAWING SET (DWG. K-001 - K-303) AND PROPOSED TEMPORARY TRAFFIC CONTROL DEVICES (DWG. K-201 - K-303) ARE SUBJECT TO REVIEW AND APPROVAL FROM NYC DOT'S OCMC.



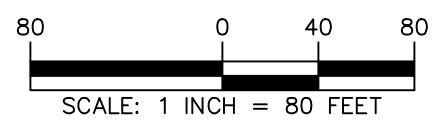
WARNING: IT IS A VIOLATION OF THE NYS EDUCATION LAW ARTICLE 145 FOR ANY PERSON, UNLESS HE OR SHE IS ACTING UNDER THE DIRECTION OF A LICENSED PROFESSIONAL ENGINEER, LAND SURVEYOR OR GEOLOGIST, TO ALTER THIS ITEM IN ANY WAY.

 Langan Engineering, Environmental, Surveying, Landscape Architecture, and Geology, D.P.C. One North Broadway, Suite 910 White Plains, NY 10601 T: 914.323.7400 F: 914.323.7401 www.langan.com	Project CHPE ARC PROJECT 3.5 MILE UG TRANSMISSION ASTORIA NEW YORK	Drawing Title EXISTING ROADWAY CONDITIONS - UTILITY CONSTRUCTION - 14TH STREET (30TH DR. - 30TH RD.)	Project No. 19008801 Date 2024-03-27 Drawn By NST Checked By AP	Drawing No. K-104 Sheet 7 of 25
	Project CHPE ARC PROJECT 3.5 MILE UG TRANSMISSION ASTORIA NEW YORK		Drawing Title EXISTING ROADWAY CONDITIONS - UTILITY CONSTRUCTION - 14TH STREET (30TH DR. - 30TH RD.)	



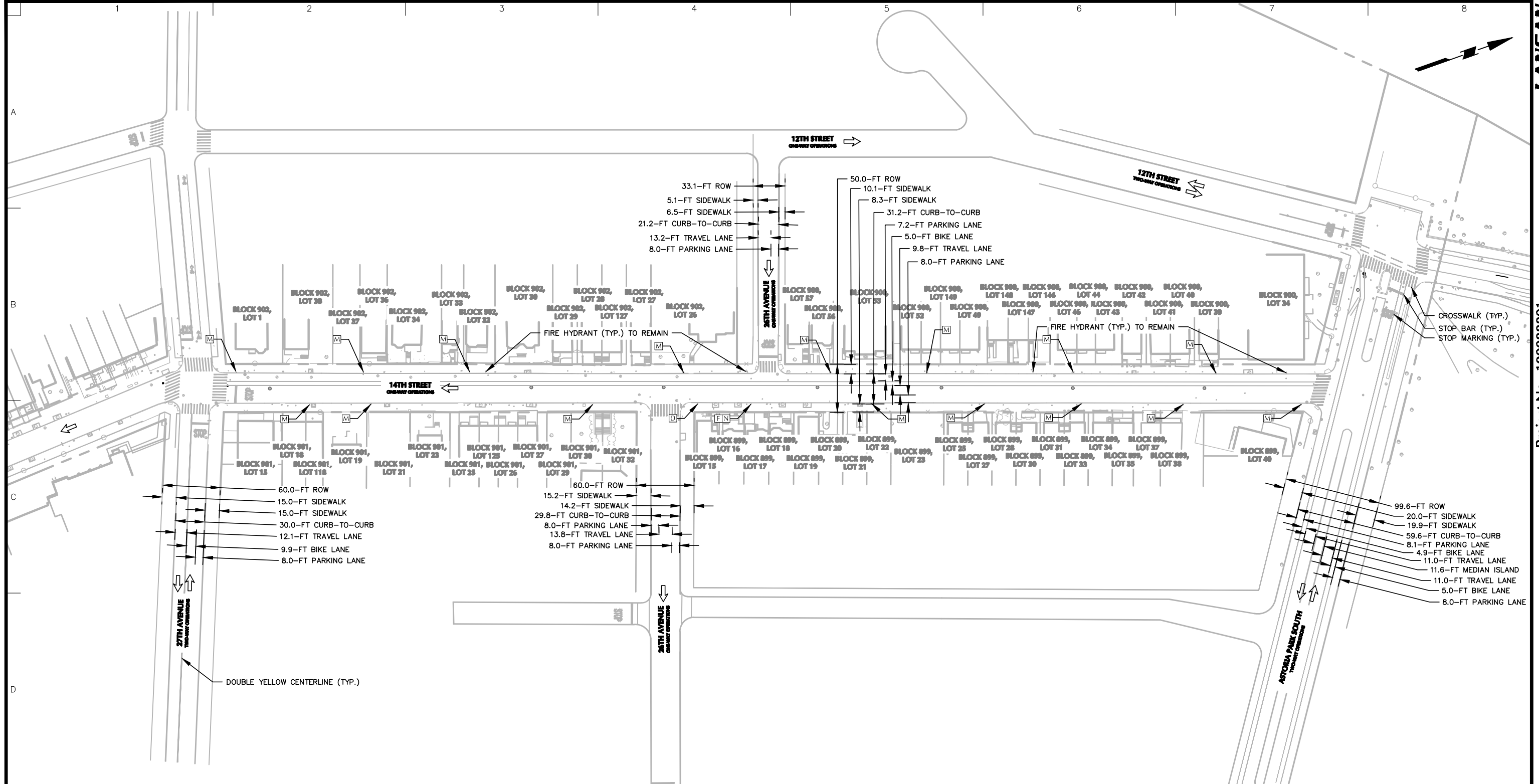
- LEGEND:**
- PROPERTY LINE
 - EXISTING TRAFFIC FLOW DIRECTION
 - ON-STREET PARKING REGULATION ID

- GENERAL NOTES:**
1. BACKGROUND INFORMATION OBTAINED FROM A FIELD SURVEY CONDUCTED BY LANGAN ENGINEERING, ENVIRONMENTAL, SURVEYING, LANDSCAPE ARCHITECTURE AND GEOLOGY, D.P.C. IN MARCH 2023.
 2. SURVEY INFORMATION SUPPLEMENTED WITH PAVEMENT MARKINGS OBTAINED FROM GOOGLE MAPS AND BING MAPS AERIAL IMAGERY.
 3. EXISTING ROADWAY CONDITIONS SHOWN FOR MH-4 CONSTRUCTION ALONG 14TH STREET (SEE DWG. K-303).
 4. EXISTING ON-STREET PARKING REGULATIONS OBTAINED FROM NYC DOT ONLINE DATABASE AND VERIFIED USING RECENT IMAGERY OBTAINED FROM GOOGLE MAPS STREETVIEW IMAGERY.
 5. EXISTING ON-STREET PARKING REGULATIONS ARE REPRESENTED USING LETTER IDS. SEE SHEET K-003 FOR CORRESPONDING PARKING REGULATIONS.
 6. THE MPT DRAWING SET (DWG. K-001 - K-303) AND PROPOSED TEMPORARY TRAFFIC CONTROL DEVICES (DWG. K-201 - K-303) ARE SUBJECT TO REVIEW AND APPROVAL FROM NYC DOT'S OCMC.



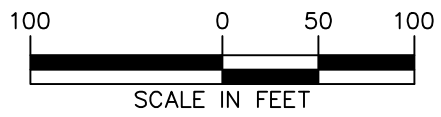
WARNING: IT IS A VIOLATION OF THE NYS EDUCATION LAW ARTICLE 145 FOR ANY PERSON, UNLESS HE OR SHE IS ACTING UNDER THE DIRECTION OF A LICENSED PROFESSIONAL ENGINEER, LAND SURVEYOR OR GEOLOGIST, TO ALTER THIS ITEM IN ANY WAY.

 Langan Engineering, Environmental, Surveying, Landscape Architecture, and Geology, D.P.C. One North Broadway, Suite 910 White Plains, NY 10601 T: 914.323.7400 F: 914.323.7401 www.langan.com	Project CHPE ARC PROJECT 3.5 MILE UG TRANSMISSION ASTORIA NEW YORK	Drawing Title EXISTING ROADWAY CONDITIONS - UTILITY CONSTRUCTION - 14TH ST (29TH AVE. - 28TH AVE.)	Project No. 190088801	Drawing No. K-105
			Date 2024-03-27	Drawn By NST
		Checked By AP		Sheet 8 of 25



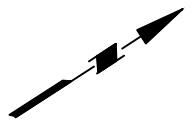
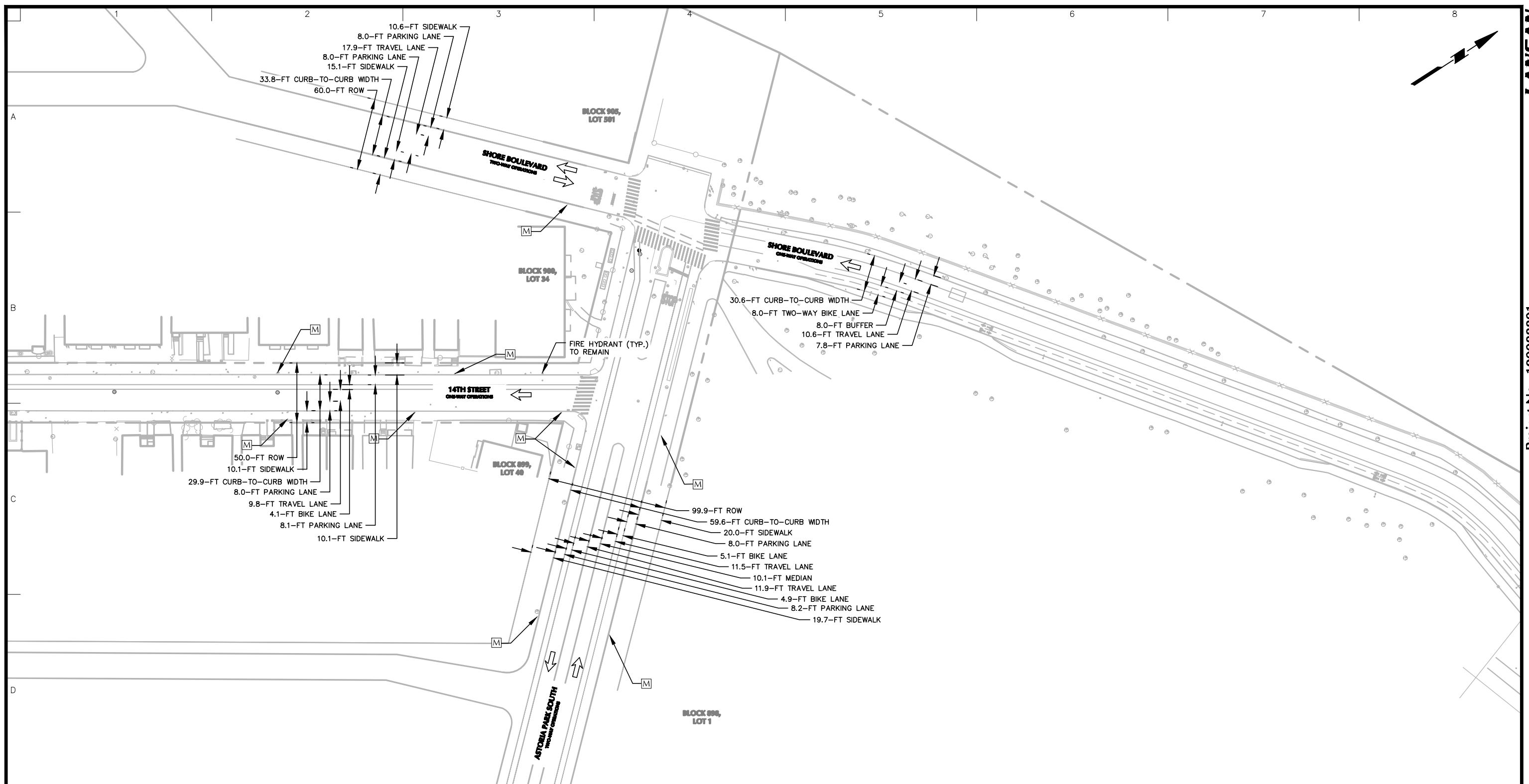
- LEGEND:**
- PROPERTY LINE
 - EXISTING TRAFFIC FLOW DIRECTION
 - ON-STREET PARKING REGULATION ID

- GENERAL NOTES:**
1. BACKGROUND INFORMATION OBTAINED FROM A FIELD SURVEY CONDUCTED BY LANGAN ENGINEERING, ENVIRONMENTAL, SURVEYING, LANDSCAPE ARCHITECTURE AND GEOLOGY, D.P.C. IN MARCH 2023.
 2. SURVEY INFORMATION SUPPLEMENTED WITH PAVEMENT MARKINGS OBTAINED FROM GOOGLE MAPS AND BING MAPS AERIAL IMAGERY.
 3. EXISTING ROADWAY CONDITIONS SHOWN FOR TYPICAL DUCT BANK CONSTRUCTION ALONG 14TH STREET BETWEEN 27TH AVENUE AND ASTORIA PARK SOUTH (SEE DWG. K-205).
 4. EXISTING ON-STREET PARKING REGULATIONS OBTAINED FROM NYC DOT ONLINE DATABASE AND VERIFIED USING RECENT IMAGERY OBTAINED FROM GOOGLE MAPS STREETVIEW IMAGERY.
 5. EXISTING ON-STREET PARKING REGULATIONS ARE REPRESENTED USING LETTER IDS. SEE SHEET K-003 FOR CORRESPONDING PARKING REGULATIONS.
 6. THE MPT DRAWING SET (DWG. K-001 - K-303) AND PROPOSED TEMPORARY TRAFFIC CONTROL DEVICES (DWG. K-201 - K-303) ARE SUBJECT TO REVIEW AND APPROVAL FROM NYC DOT'S OCMC.



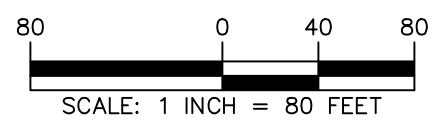
WARNING: IT IS A VIOLATION OF THE NYS EDUCATION LAW ARTICLE 145 FOR ANY PERSON, UNLESS HE OR SHE IS ACTING UNDER THE DIRECTION OF A LICENSED PROFESSIONAL ENGINEER, LAND SURVEYOR OR GEOLOGIST, TO ALTER THIS ITEM IN ANY WAY.

<p>LANGAN Langan Engineering, Environmental, Surveying, Landscape Architecture, and Geology, D.P.C. One North Broadway, Suite 910 White Plains, NY 10601 T: 914.323.7400 F: 914.323.7401 www.langan.com</p>	<p>Project CHPE ARC PROJECT 3.5 MILE UG TRANSMISSION</p>	<p>Drawing Title EXISTING ROADWAY CONDITIONS - UTILITY CONSTRUCTION - 14TH ST (27TH AVE. - ASTORIA PARK S.)</p>	<p>Project No. 19008801</p>	<p>Drawing No. K-106</p>
	<p>Queens County Astoria New York</p>	<p>Date 2024-03-27</p>	<p>Drawn By NST</p>	<p>Checked By AP</p>



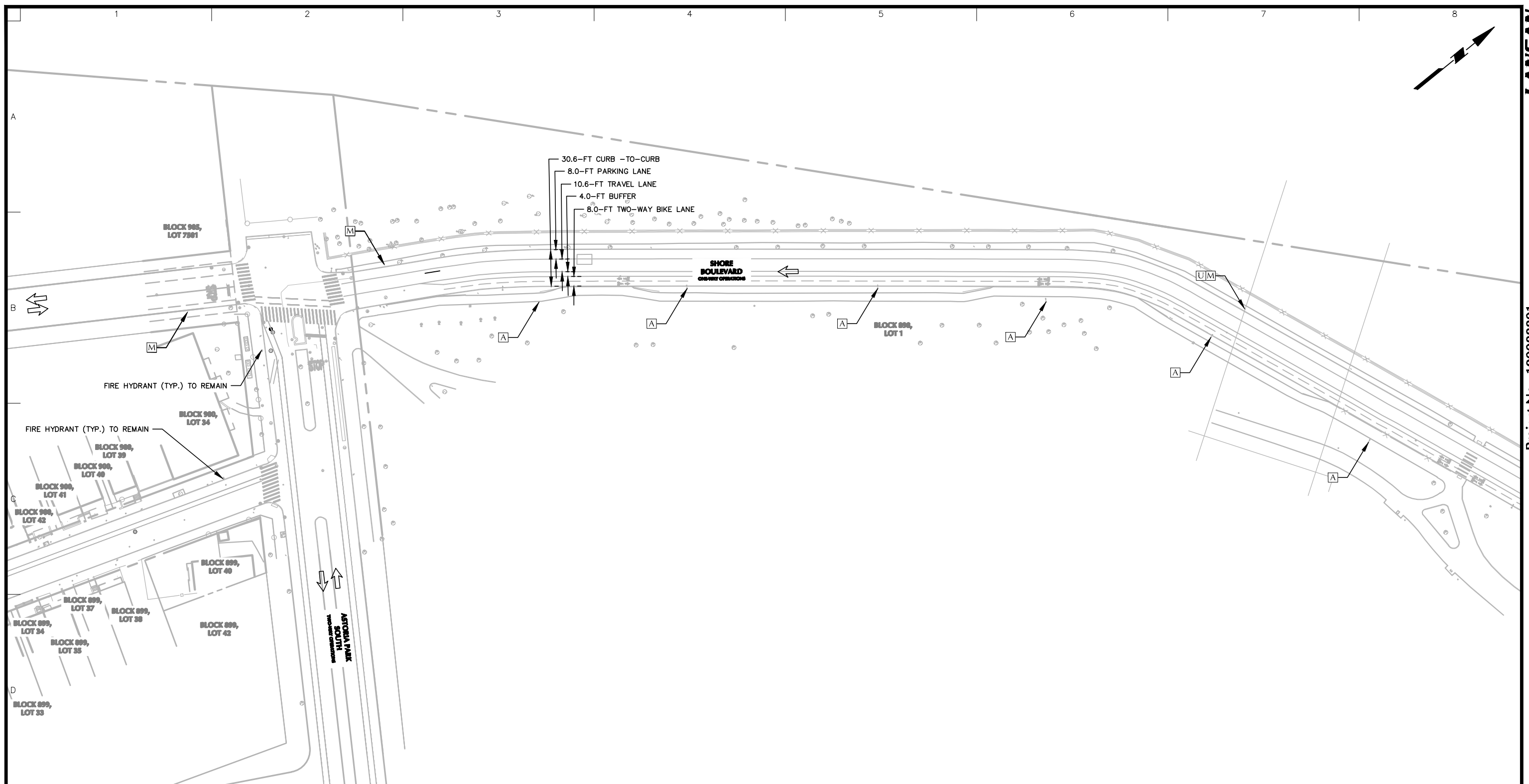
- LEGEND:**
- PROPERTY LINE
 - EXISTING TRAFFIC FLOW DIRECTION
 - ON-STREET PARKING REGULATION ID

- GENERAL NOTES:**
1. BACKGROUND INFORMATION OBTAINED FROM A FIELD SURVEY CONDUCTED BY LANGAN ENGINEERING, ENVIRONMENTAL, SURVEYING, LANDSCAPE ARCHITECTURE AND GEOLOGY, D.P.C. IN MARCH 2023.
 2. SURVEY INFORMATION SUPPLEMENTED WITH PAVEMENT MARKINGS OBTAINED FROM GOOGLE MAPS AND BING MAPS AERIAL IMAGERY.
 3. EXISTING ROADWAY CONDITIONS SHOWN FOR TYPICAL DUCT BANK CONSTRUCTION ALONG ASTORIA PARK SOUTH (SEE DWG. K-206).
 4. EXISTING ON-STREET PARKING REGULATIONS OBTAINED FROM NYC DOT ONLINE DATABASE AND VERIFIED USING RECENT IMAGERY OBTAINED FROM GOOGLE MAPS STREETVIEW IMAGERY.
 5. EXISTING ON-STREET PARKING REGULATIONS ARE REPRESENTED USING LETTER IDS. SEE SHEET K-003 FOR CORRESPONDING PARKING REGULATIONS.
 6. THE MPT DRAWING SET (DWG. K-001 - K-303) AND PROPOSED TEMPORARY TRAFFIC CONTROL DEVICES (DWG. K-201 - K-303) ARE SUBJECT TO REVIEW AND APPROVAL FROM NYC DOT'S OCMC.



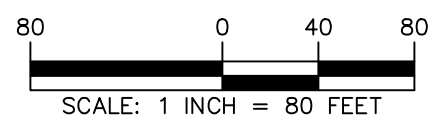
WARNING: IT IS A VIOLATION OF THE NYS EDUCATION LAW ARTICLE 145 FOR ANY PERSON, UNLESS HE OR SHE IS ACTING UNDER THE DIRECTION OF A LICENSED PROFESSIONAL ENGINEER, LAND SURVEYOR OR GEOLOGIST, TO ALTER THIS ITEM IN ANY WAY.

 Langan Engineering, Environmental, Surveying, Landscape Architecture, and Geology, D.P.C. One North Broadway, Suite 910 White Plains, NY 10601 T: 914.323.7400 F: 914.323.7401 www.langan.com	Project CHPE ARC PROJECT 3.5 MILE UG TRANSMISSION ASTORIA NEW YORK	Drawing Title EXISTING ROADWAY CONDITIONS - UTILITY CONSTRUCTION - ASTORIA PARK S (14TH ST SHORE BLVD)	Project No. 190088801	Drawing No. K-107
			Date 2024-03-27	Sheet 10 of 25
		Drawn By NST		
		Checked By AP		



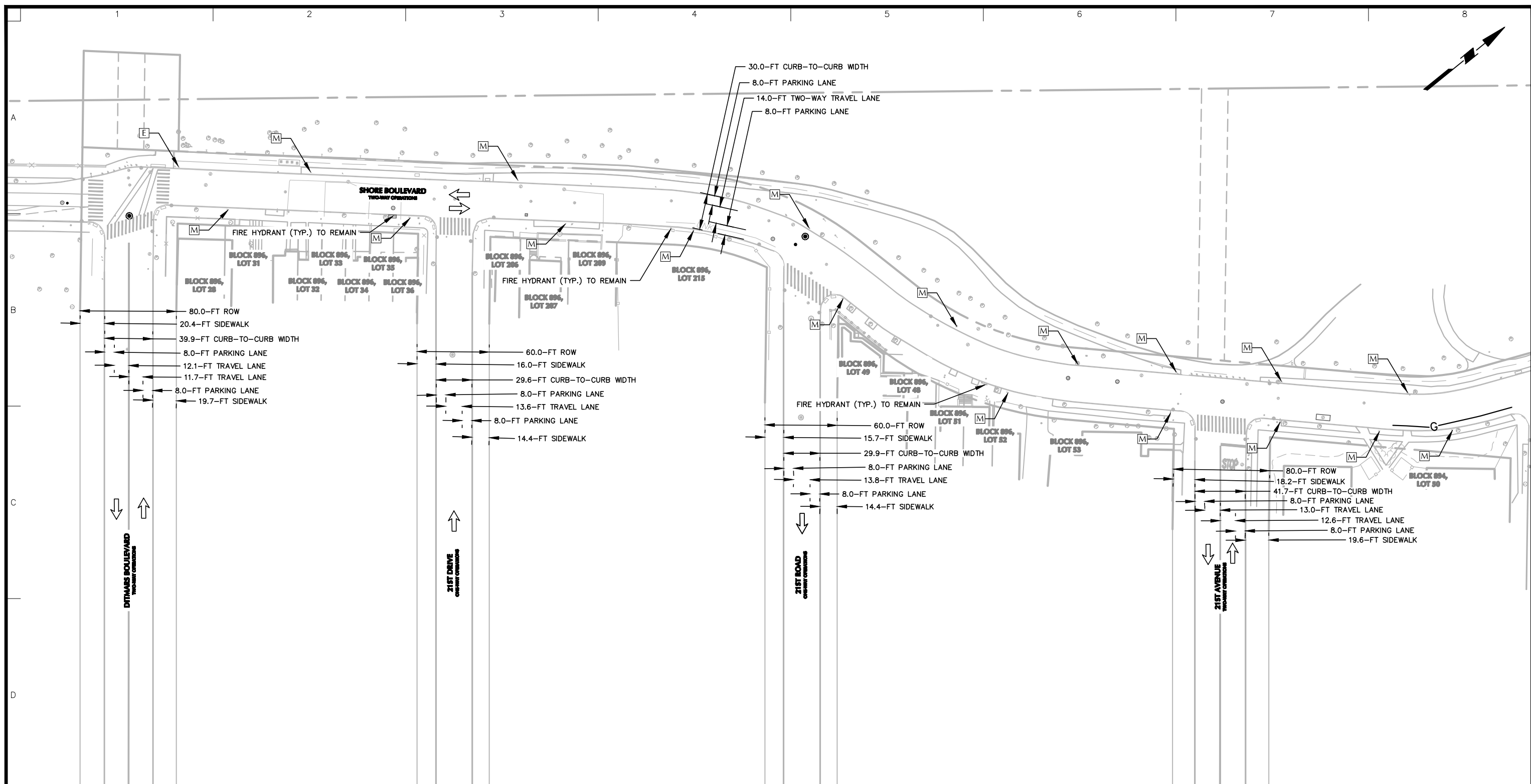
- LEGEND:**
- PROPERTY LINE
 - EXISTING TRAFFIC FLOW DIRECTION
 - ON-STREET PARKING REGULATION ID

- GENERAL NOTES:**
1. BACKGROUND INFORMATION OBTAINED FROM A FIELD SURVEY CONDUCTED BY LANGAN ENGINEERING, ENVIRONMENTAL, SURVEYING, LANDSCAPE ARCHITECTURE AND GEOLOGY, D.P.C. IN MARCH 2023.
 2. SURVEY INFORMATION SUPPLEMENTED WITH PAVEMENT MARKINGS OBTAINED FROM GOOGLE MAPS AND BING MAPS AERIAL IMAGERY.
 3. EXISTING ROADWAY CONDITIONS SHOWN FOR TYPICAL DUCT BANK CONSTRUCTION, MH-5 CONSTRUCTION, AND MH-6 CONSTRUCTION ALONG SHORE BOULEVARD (SEE DWG. K-207).
 4. EXISTING ON-STREET PARKING REGULATIONS OBTAINED FROM NYC DOT ONLINE DATABASE AND VERIFIED USING RECENT IMAGERY OBTAINED FROM GOOGLE MAPS STREETVIEW IMAGERY.
 5. EXISTING ON-STREET PARKING REGULATIONS ARE REPRESENTED USING LETTER IDS. SEE SHEET K-003 FOR CORRESPONDING PARKING REGULATIONS.
 6. THE MPT DRAWING SET (DWG. K-001 - K-303) AND PROPOSED TEMPORARY TRAFFIC CONTROL DEVICES (DWG. K-201 - K-303) ARE SUBJECT TO REVIEW AND APPROVAL FROM NYC DOT'S OCMC.



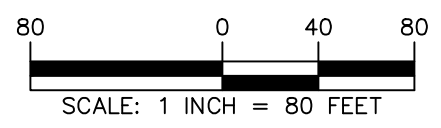
WARNING: IT IS A VIOLATION OF THE NYS EDUCATION LAW ARTICLE 145 FOR ANY PERSON, UNLESS HE OR SHE IS ACTING UNDER THE DIRECTION OF A LICENSED PROFESSIONAL ENGINEER, LAND SURVEYOR OR GEOLOGIST, TO ALTER THIS ITEM IN ANY WAY.

<p>LANGAN Langan Engineering, Environmental, Surveying, Landscape Architecture, and Geology, D.P.C. One North Broadway, Suite 910 White Plains, NY 10601 T: 914.323.7400 F: 914.323.7401 www.langan.com</p>	<p>Project CHPE ARC PROJECT 3.5 MILE UG TRANSMISSION</p>	<p>Drawing Title EXISTING ROADWAY CONDITIONS - UTILITY CONSTRUCTION - SHORE BLVD (ASTORIA PARK S - DITMARS BLVD)</p>	<p>Project No. 190088801</p>	<p>Drawing No. K-108</p>
	<p>Queens County Astoria New York</p>	<p>Date 2024-03-27</p>	<p>Drawn By NST</p>	<p>Checked By AP</p>



- LEGEND:**
- PROPERTY LINE
 - EXISTING TRAFFIC FLOW DIRECTION
 - ON-STREET PARKING REGULATION ID

- GENERAL NOTES:**
1. BACKGROUND INFORMATION OBTAINED FROM A FIELD SURVEY CONDUCTED BY LANGAN ENGINEERING, ENVIRONMENTAL, SURVEYING, LANDSCAPE ARCHITECTURE AND GEOLOGY, D.P.C. IN MARCH 2023.
 2. SURVEY INFORMATION SUPPLEMENTED WITH PAVEMENT MARKINGS OBTAINED FROM GOOGLE MAPS AND BING MAPS AERIAL IMAGERY.
 3. EXISTING ROADWAY CONDITIONS SHOWN FOR TYPICAL DUCT BANK AND MH-7 CONSTRUCTION ALONG SHORE BOULEVARD BETWEEN DITMARS BOULEVARD AND 20TH AVENUE (SEE DWG. K-208).
 4. EXISTING ON-STREET PARKING REGULATIONS OBTAINED FROM NYC DOT ONLINE DATABASE AND VERIFIED USING RECENT IMAGERY OBTAINED FROM GOOGLE MAPS STREETVIEW IMAGERY.
 5. EXISTING ON-STREET PARKING REGULATIONS ARE REPRESENTED USING LETTER IDS. SEE SHEET K-003 FOR CORRESPONDING PARKING REGULATIONS.
 6. THE MPT DRAWING SET (DWG. K-001 - K-303) AND PROPOSED TEMPORARY TRAFFIC CONTROL DEVICES (DWG. K-201 - K-303) ARE SUBJECT TO REVIEW AND APPROVAL FROM NYC DOT'S OCMC.



WARNING: IT IS A VIOLATION OF THE NYS EDUCATION LAW ARTICLE 145 FOR ANY PERSON, UNLESS HE OR SHE IS ACTING UNDER THE DIRECTION OF A LICENSED PROFESSIONAL ENGINEER, LAND SURVEYOR OR GEOLOGIST, TO ALTER THIS ITEM IN ANY WAY.

<p>Langan Engineering, Environmental, Surveying, Landscape Architecture, and Geology, D.P.C. One North Broadway, Suite 910 White Plains, NY 10601 T: 914.323.7400 F: 914.323.7401 www.langan.com</p>	<p>Project CHPE ARC PROJECT 3.5 MILE UG TRANSMISSION</p>	<p>Drawing Title EXISTING ROADWAY CONDITIONS - UTILITY CONSTRUCTION - SHORE BLVD (DITMARS BLVD - 20TH AVE)</p>	<p>Project No. 19008801</p>	<p>Drawing No. K-109</p>
	<p>ASTORIA NEW YORK</p>	<p>Date 2024-03-27</p>	<p>Drawn By NST</p>	<p>Checked By AP</p>