



Appendix 1-A: EM&CP Filing Notices

NOTICE OF SUBMISSION OF ENVIRONMENTAL MANAGEMENT AND CONSTRUCTION PLAN FOR CHAMPLAIN HUDSON POWER EXPRESS

Please take notice that, on or about January 24, 2024, CHPE, LLC and CHPE Properties, Inc. (collectively referred to as “CHPE” or “Certificate Holders”) intend to submit Environmental Management & Construction Plans (“EM&CPs”) for the Lake Champlain Cable Installation Segment (“Segment 18B”) of the proposed Champlain Hudson Power Express (“CHPE”) Project. The Lake Champlain Cable Installation Segment EM&CP includes submarine installation of the Facility in the bed of Lake Champlain, which is anticipated to occur from the spring through the fall of 2024.

On April 18, 2013, the NYS Public Service Commission (Commission) issued to CHPE a certificate of environmental compatibility and public need (Certificate), pursuant to Article VII of the Public Service Law (PSL), to construct and operate the CHPE Project. The Certificate requires that, prior to construction of any portion of the Project, CHPE submit an EM&CP for review and comment.

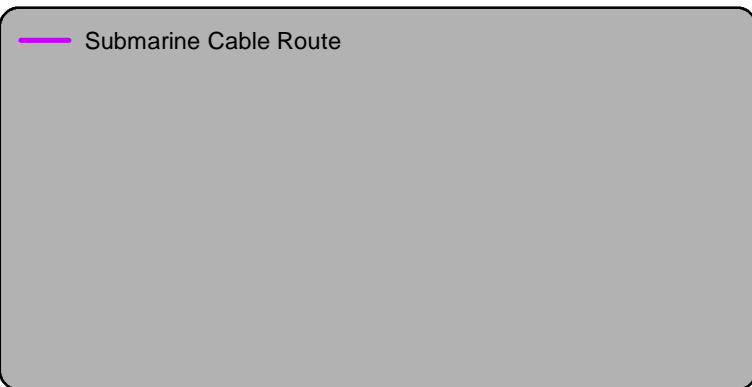
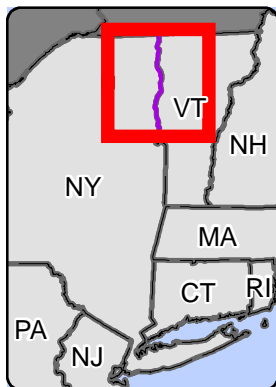
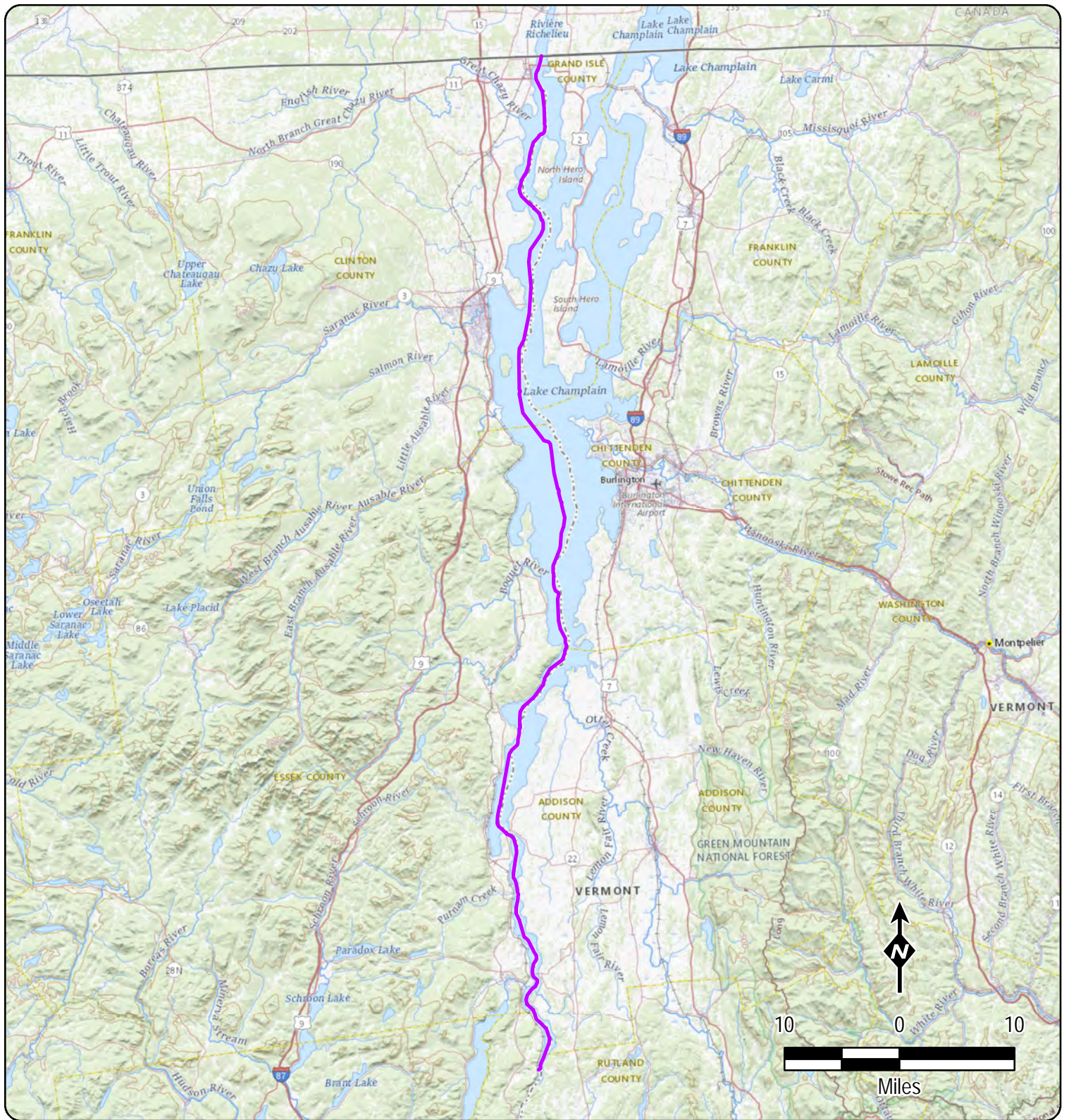

Details of the planned work locations, including an overview map of the proposed route, is available on the Project website at: <https://chpexpress.com/overview-of-public-documents/environmental-management-construction-plan/>. In general, construction activities for this Segment are anticipated to commence in the spring of 2024. Cable installation will occur on a 24-hour, 7-day-per-week basis to facilitate timely and efficient installation of the Facility. Some other types of construction, such as the pre-lay grapnel run and utility protection work, will generally occur during daylight hours, though those activities may require extending into later hours as needed.

The EM&CP provides detailed information regarding how this Segment of the Project will be constructed, the specific locations of the proposed permanent right-of-way and Construction Zones, as well as descriptions of work to be performed, plan and profile drawings depicting the Project, and protocols to be used during construction to protect the community and the environment, and to comply with the CHPE Certificate. The EM&CP must be reviewed and approved by the PSC before construction on the Segment can begin.

The full Commission docket for the Project can be accessed via the Commission’s website at: <http://documents.dps.ny.gov/public/MatterManagement/CaseMaster.aspx?MatterCaseNo=10-T-0139> and electronic copies of EM&CP documents also will be available on the Project website at <https://chpexpress.com/overview-of-public-documents/environmental-management-construction-plan/>. Paper copies of the Segment EM&CP submissions will be available for viewing at the following local document repositories: Rouses Point Dodge Memorial Library, 144 Lake Street, Rouses Point, NY 12979; Plattsburgh Public Library, 19 Oak St., Plattsburgh, NY 12901 and Black Watch Memorial Library 99 Montcalm St., Ticonderoga, NY 12883.

Comments related to this proposed EM&CP should be submitted to the Commission Secretary by email at secretary@dps.ny.gov or by mail to Michelle Phillips, Secretary, NYS Public Service Commission, 3 Empire State Plaza, Albany, NY, 12223, within 30 days of the EM&CP segment’s filing with the Commission. All comments should reference Case Number 10-T-0139.

CHPE has established a toll-free number for questions regarding the Project: 1-800-991-CHPE (2473). Questions or requests for further information can be directed to: publicoutreach@chpexpress.com or by mail to Molly Hollister, WSP USA, One Pennsylvania Plaza, New York, New York 10119.

CHAMPLAIN HUDSON POWER EXPRESS
 Lake Champlain Marine Segment
 Cable Installation EM&CP
 Figure 1

Created: 1/9/2024



623 Fifth Avenue, 20th Floor
New York, New York 10022

Notice of Submission of Lake Champlain Cable Installation EM&CP For the Champlain Hudson Power Express Project

Dear Stakeholder,

On or about January 24, 2024, CHPE, LLC and CHPE Properties, Inc. (collectively referred to as “CHPE” or “Certificate Holders”) intend to submit Environmental Management & Construction Plans (“EM&CPs”) for the Lake Champlain Cable Installation Segment (“Segment 18B”) of the proposed Champlain Hudson Power Express (“CHPE”) Project. The Lake Champlain Cable Installation Segment EM&CP includes submarine installation of the Facility in the bed of Lake Champlain, which is anticipated to occur from the spring through the fall of 2024.

The New York State Public Service Commission (“PSC”) issued a Certificate of Environmental Compatibility and Public Need (“Certificate”) to CHPE on April 18, 2013 to construct and operate the CHPE Project. Pursuant to that Certificate, CHPE is required to circulate notices to certain landowners, utility owners, municipalities and agencies near the proposed Segment locations indicating that the EM&CPs will be filed and providing links and contact information which stakeholders can use to obtain further information or to submit comments.

The EM&CP provides detailed information regarding how this Segment of the Project will be constructed, the specific locations of the proposed permanent right-of-way and Construction Zones, as well as descriptions of work to be performed, plan and profile drawings depicting the Project, and protocols to be used during construction to protect the community and the environment, and to comply with the CHPE Certificate. The EM&CP must be reviewed and approved by the PSC before construction on the Segment can begin.

An overview map of the proposed Segment location accompanies this notice. Further details of the planned work locations will be made available on the Project website at: <https://chpexpress.com/overview-of-public-documents/environmental-management-construction-plan/>. In general, construction activities for this Segment are anticipated to commence in the spring of 2024. Cable installation will occur on a 24-hour, 7-day-per-week basis to facilitate timely and efficient installation of the Facility. Some other types of construction, such as the pre-lay grapnel run and utility protection work, will generally occur during daylight hours, though those activities may require extending into later hours as needed.

Contact Information and Document Repositories

CHPE has established a toll-free number for questions regarding the Project: 1-800-991-CHPE (2473). Questions or requests for further information can be directed to publicoutreach@chpexpress.com or by mail to Molly Hollister, WSP USA, One Pennsylvania Plaza, New York, New York 10119.

The EM&CP documents will be available on the PSC’s website at <http://documents.dps.ny.gov/public/MatterManagement/CaseMaster.aspx?MatterCaseNo=10-T-0139> and on the Project website <https://chpexpress.com/overview-of-public-documents/environmental-management-construction-plan/> once they are filed.



623 Fifth Avenue, 20th Floor
New York, New York 10022

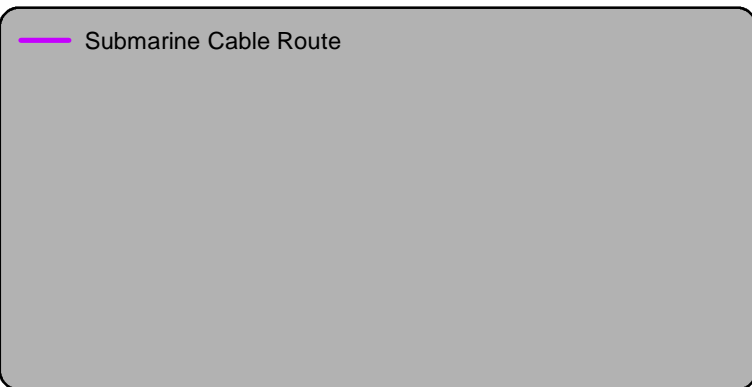
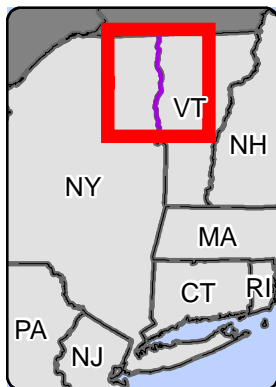
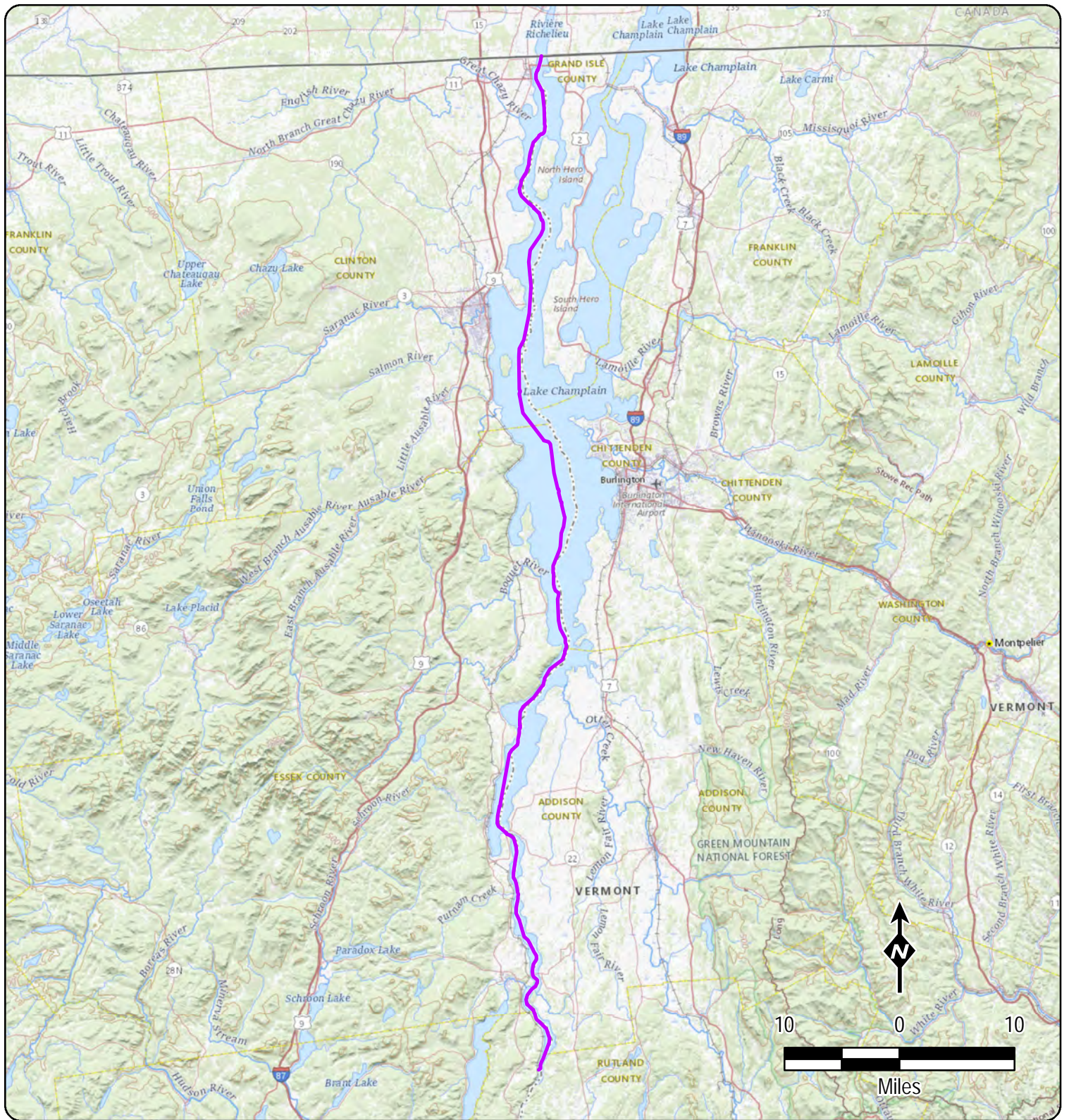

Paper copies of the Segment EM&CP submissions will be available for viewing at the following local document repositories: Rouses Point Dodge Memorial Library, 144 Lake Street, Rouses Point, NY 12979; Plattsburgh Public Library, 19 Oak St., Plattsburgh, NY 12901 and Black Watch Memorial Library 99 Montcalm St., Ticonderoga, NY 12883.

Filing Comments

Any person wishing to be heard by the Commission on any matter related to the proposed EM&CPs may file written comments with the Commission Secretary by email at secretary@dps.ny.gov or by mail to Michelle Phillips, Secretary, NYS Public Service Commission, 3 Empire State Plaza, Albany, NY, 12223, within 30 days of the EM&CP Segment's filing with the Commission. All comments should reference Case Number 10-T-0139.

Yours truly,

Josh Bagnato
Vice President, Development

CHAMPLAIN HUDSON POWER EXPRESS
 Lake Champlain Marine Segment
 Cable Installation EM&CP
 Figure 1

Created: 1/9/2024