



623 Fifth Avenue, 20th Floor
New York, NY 10022

Notice of Start of Construction for Lake Champlain Cable Installation Segment of the Champlain Hudson Power Express Project

Dear Stakeholder,

This letter is to inform you that, on or about May 6, 2024, CHPE, LLC and CHPE Properties, Inc. (collectively referred to as “CHPE” or “Certificate Holders”) intend to commence work on the Segment 18B, Lake Champlain Cable Installation, of the proposed Champlain Hudson Power Express (“CHPE”) Project, pursuant to the Environmental Management & Construction Plan (“EM&CP”) approved by the New York State Public Service Commission (“Commission”) on April 18, 2024. Work on this Segment will be broken into phases, starting with the pre-lay grapnel run and debris removal phase (anticipated to begin on or about May 2024 in the Upper Lake and on or about August 2024 in the Lower Lake); cable installation (anticipated to begin on or about June 2024 at the US/Canadian Border, with completion anticipated at Putnam Station in Washington County in October 2024); and post-lay mattress installation (anticipated to begin on or about June 2024 and end in approximately October 2024).

The scope of work for this Segment includes the mobilization of vessels and equipment, a pre-lay grapnel run to remove debris from the path of the cable, the submarine installation of the CHPE Facility in the bed of Lake Champlain and installation of concrete mattresses at utility crossing locations to protect co-located infrastructure and the Facility. A map showing the CHPE route is attached hereto.

Cable installation work will occur on a 24-hour, 7-day-per-week basis to facilitate timely and efficient installation of the Facility. Some other types of construction, such as the pre-lay grapnel run and utility protection work, will generally occur during daylight hours, though those activities may require extending into later hours as needed. Where nighttime work is needed, noise and visual impact mitigation measures will be employed as needed to reduce impacts to nearby sensitive receptors, such as residences.

Contact Information and Document Repositories

CHPE has established a toll-free number for questions regarding the Project, including a complaint resolution plan for issues arising during construction: 1-800-991-CHPE (2473). Questions or requests for further information can be directed to: publicoutreach@chpexpress.com or by mail to Molly Hollister, WSP USA, One Pennsylvania Plaza, New York, New York 10119.

Details of the planned work locations, including construction drawings showing in detail the approved Segment, are available on the Project website at: <https://chpexpress.com/overview-of-public-documents/environmental-management-construction-plan/>. The full State Public Service Commission docket for the Project can be accessed via the Commission’s website in Case 10-T-0139, which is available at: <http://documents.dps.ny.gov/public/MatterManagement/CaseMaster.aspx?MatterCaseNo=10-T->



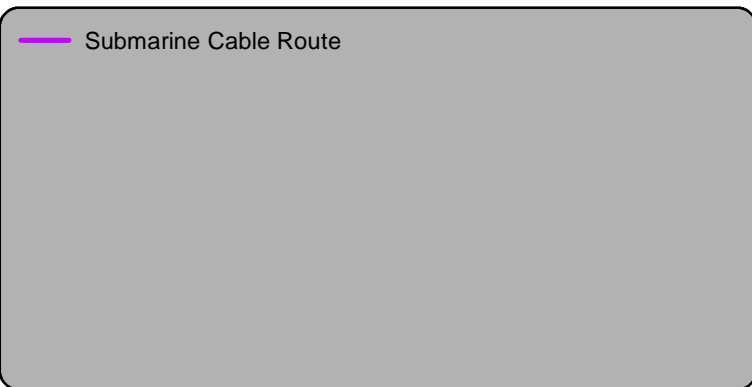
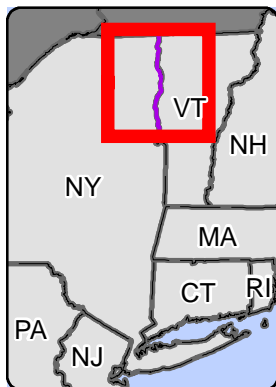
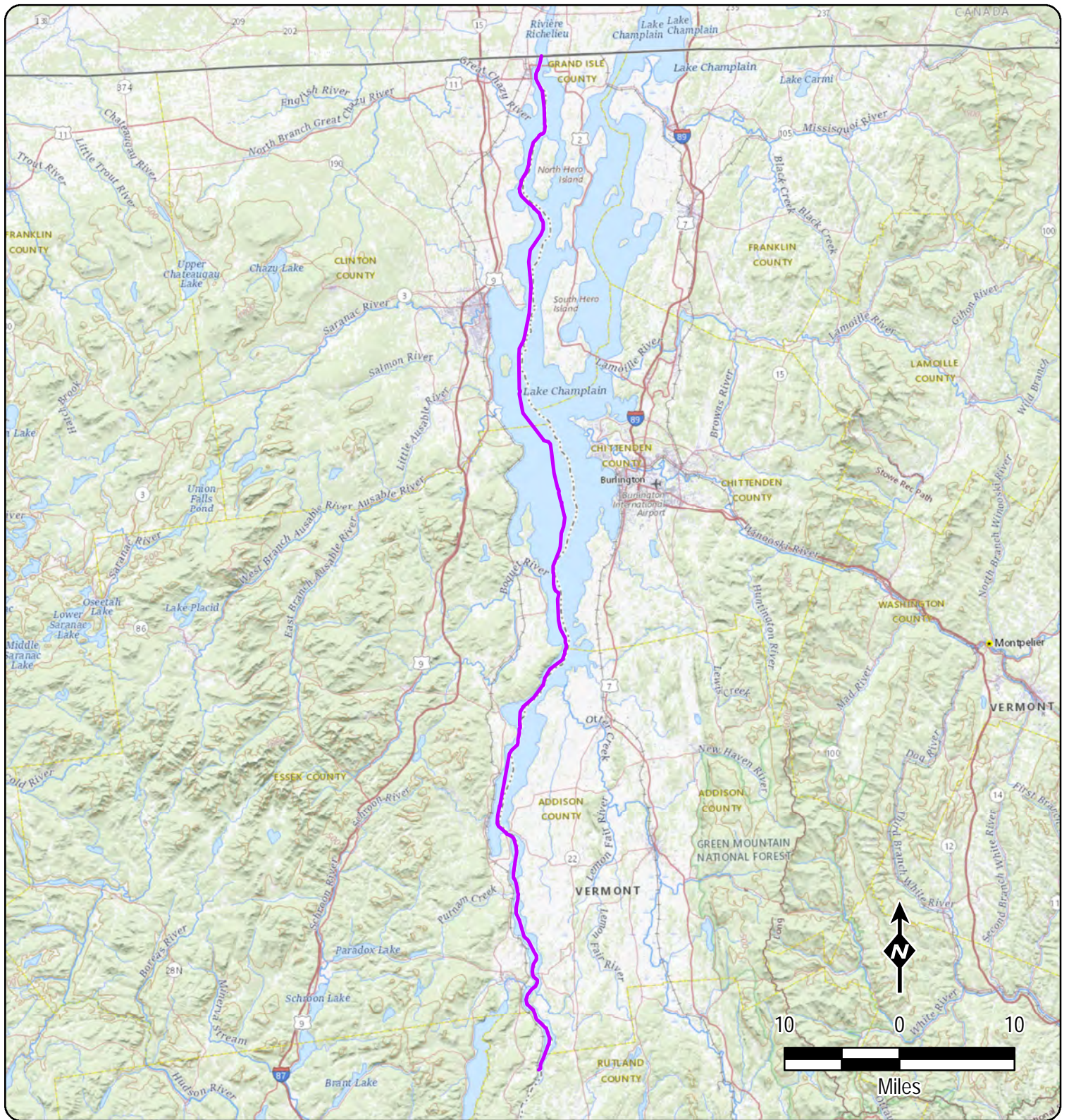

623 Fifth Avenue, 20th Floor
New York, NY 10022

0139. Paper copies of the Segment EM&CP submissions will be available for viewing at the following local document repositories: Rouses Point Dodge Memorial Library, 144 Lake Street, Rouses Point, NY 12979; Plattsburgh Public Library, 19 Oak St., Plattsburgh, NY 12901 and Black Watch Memorial Library 99 Montcalm St., Ticonderoga, NY 12883.

Facility construction falls under the jurisdiction of the Commission, which is responsible for enforcing compliance with environmental and construction conditions, and which may be contacted through Matthew Smith, Office of Electric, Gas and Water, New York State Department of Public Service, Three Empire State Plaza, Albany, NY 12223, via telephone at (518)474-8702 or email at matthew.smith@dps.ny.gov.

Yours truly,

Josh Bagnato
Vice President, Development

CHAMPLAIN HUDSON POWER EXPRESS
 Lake Champlain Marine Segment
 Cable Installation EM&CP
 Figure 1

Created: 1/9/2024