

APPENDIX R
CASE 10-T-0189
DOCUMENTATION OF CI CONSULTATIONS
HAVING OCCURRED

REDACTED

Champlain Hudson Power Express

Upland Co-Located Utility Summation Matrix

Revision Date: 9/22/2023

General Location of Utility		Owner	Utility	Utility		Quality Level (A/B/C/D)
Station (Starting Point for Parallel and Crossing Point for Perpendicular)	Station (Ending Point for Parallel)			Parallel/ Perpendicular	Description (optional)	
60000+00	60003+50	CSX RR	UG Utility (Electric)	Parallel	Runs parallel on North side of alignment	B
60001+48	60007+26	CSX RR	Water Line	Parallel	Water line runs through work area of splice location	C
60006+75		CSX RR	Water Line	Perpendicular	Water Main Crossing, runs along CSX RR access road	C
60008+33		Time Warner	OH Utility (Telephone)	Perpendicular	OT crosses the alignment.	B
60008+39		Time Warner	OH Utility (Telephone)	Perpendicular	OT crosses the alignment.	B
60013+10		National Grid	UG Utility (Gas Distribution)	Perpendicular	Gas main line running on the east side along US-9W. High pressure line, 18 to 60 PSI per ticket #10122-022-434-00	B
60013+63		Town of Bethlehem	Water Line	Perpendicular	Water Main Crossing	D
60014+21		Town of Bethlehem	Water Line	Perpendicular	Water line over HDD 91	B
60014+29		National Grid	OH Utility (Electric Distribution)	Perpendicular	OH Electric (2 lines) & communications	B
60014+33		National Grid	OH Utility (Electric)	Perpendicular	OH electric line, east of US-9W	B
60028+45	60035+64	CSX RR	UG Utility (Electric)	Parallel	Underground electric running on the east side of the alignment.	B
60028+46		CSX RR	UG Utility (Electric)	Perpendicular	Underground electric line	B
60029+92		CSX RR	UG Utility (Electric)	Perpendicular	Underground electric	B
60030+00	60035+82	CSX RR	UG Utility (Electric)	Parallel	Underground electric running on the north side of the alignment.	B
60037+43		National Grid	OH Utility (Transmission)	Perpendicular	Overhead transmission lines (3)	B
60045+71		CSX RR	OH Utility (Electric)	Perpendicular	Pole without connection near alignment	B
60046+72		CSX RR	OH Utility (Electric)	Perpendicular	Pole without connection near alignment	B
60057+32		CSX RR	Storm Drainage Pipe/Culvert	Perpendicular	12" PVC culvert crosses RR Tracks	B
60068+83		CSX RR	OH Utility (Electric)	Perpendicular	Pole without connection near alignment	B
60069+81		CSX RR	OH Utility (Electric)	Perpendicular	Pole without connection near alignment	B
60078+55		AT&T	UG Utility (Fiber)	Perpendicular	UG Fiber line crosses the alignment.	D
60078+73		AT&T	UG Utility (Fiber)	Perpendicular	UG Fiber line crosses the alignment.	D
60081+94		Enterprise Products	UG Utility (Gas Transmission)	Perpendicular	Propane - Crossing RR Tracks in Easement	B
60091+30		CSX RR	OH Utility (Electric)	Perpendicular	Pole without connection near alignment	B
60110+04		State Telephone	OH Utility (Telephone)	Perpendicular	OT crosses the alignment.	B
60110+29		State Telephone	OH Utility (Telephone)	Perpendicular	OT crosses the alignment.	B
60126+84	60128+18	CSX RR	UG Utility (Electric)	Parallel	Crosses RR Tracks	B
60127+55		State Telephone	UG Utility (Telephone)	Perpendicular	UT crosses the alignment.	B
60127+63		CSX RR	Storm Drainage Pipe/Culvert	Perpendicular	15" CMP culvert crosses access.	B
60127+63		La Farge	Storm Drainage Pipe/Culvert	Perpendicular	15" CMP culvert crosses access.	B
60127+73		State Telephone	UG Utility (Telephone)	Perpendicular	Telephone junction box is very close to LOW	B
60127+73		State Telephone	UG Utility (Telephone)	Perpendicular	Telephone pedestal very close to LOW	B
60130+95		National Grid	OH Utility (Transmission)	Perpendicular	Transmission for LaFarge Plant (6 LINES)	B
60167+94		CHG&E (Private)	OH Utility (Electric)	Perpendicular	Distribution lines on South entrance to LaFarge plant	B
60168+85	60169+22	CSX RR	UG Utility (Electric)	Parallel	UG West side of alignment	B
60169+00		La Farge	Overhead Conveyor	Perpendicular	Overhead Crossing of Conveyor	B
60171+80		CSX RR	OH Utility (Electric)	Perpendicular	Pole without connection near alignment	B
60181+31		CSX RR	OH Utility (Electric)	Perpendicular	Pole without connection near alignment	B
60182+25		CSX RR	OH Utility (Electric)	Perpendicular	Pole without connection near alignment	B
60194+18		CSX RR	Storm Drainage Pipe/Culvert	Perpendicular	24" RCP Pipe Crossing RR Tracks	B
60194+18		CSX RR	Storm Drainage Pipe/Culvert	Perpendicular	24" RCP Pipe Crossing RR Tracks	B

Champlain Hudson Power Express

Upland Co-Located Utility Summation Matrix

Revision Date: 9/22/2023

General Location of Utility		Owner	Utility	Utility		Quality Level (A/B/C/D)
Station (Starting Point for Parallel and Crossing Point for Perpendicular)	Station (Ending Point for Parallel)			Parallel/ Perpendicular	Description (optional)	
60198+85		State Telephone	UG Utility (Telephone)	Perpendicular	Telephone junction box is very close to LOW	B
60198+85		State Telephone	UG Utility (Telephone)	Perpendicular	Telephone pedestal is very close to LOW	B
60198+85	60224+34	State Telephone	UG Utility (Telephone)	Parallel	Underground Telephone parallel to alignment and RR tracks.	B
60212+40	60212+60	Village of Ravena	Storm Drainage Pipe/Culvert	Parallel	8" PVC Culvert crosses Access Road	B
60213+14		Village of Ravena	Storm Sewer	Perpendicular	Catch basin just west of alignment	B
60214+40		Village of Ravena	Sanitary Sewer	Perpendicular	Manhole	B
60216+40		Village of Ravena	Storm Sewer	Perpendicular	Catch basin just west of alignment	B
60218+97	60219+42	Village of Ravena	Storm Drainage Pipe/Culvert	Parallel	12" CMP Culvert crosses access road	B
60222+94		State Telephone	UG Utility (Telephone)	Perpendicular	Underground Telephone crosses the RR tracks.	B
60222+94	60224+29	State Telephone	UG Utility (Telephone)	Parallel	Underground Telephone parallel to alignment and RR tracks.	B
60224+29		State Telephone	UG Utility (Telephone)	Perpendicular	UT crosses the alignment.	B
60224+68	60225+83	CHG&E (Private)	UG Utility (Electric)	Parallel	UG Electric line, crosses at 60226+39	B
60225+15	60225+84	CHG&E	OH Utility (Electric)	Parallel	OH Electric lines	B
60225+15		CSX RR	UG Utility (Electric)	Perpendicular	Underground electric line	B
60225+17		CHG&E (Private)	OH Utility (Electric)	Perpendicular	Overhead Crossing on Poles	B
60225+27		CSX RR	UG Utility (Electric)	Perpendicular	Underground electric line	B
60225+83		CHG&E	OH Utility (Electric)	Perpendicular	OH Electric distribution lines	B
60234+53		CSX RR	UG Utility (Electric)	Perpendicular	Railroad signals	B
61241+00	61249+05	National Grid	UG Utility (Gas Distribution)	Parallel	2" Gas distribution line along Railroad Ave	D
61243+13	61247+09	CHG&E	OH Utility (Electric)	Parallel	Pole without connection over HDD alignment	D
61243+92		Village of Ravena	Storm Sewer	Perpendicular	Catch basin along Railroad Ave	B
61243+92		Village of Ravena	Storm Sewer	Perpendicular	Catch basin	B
61247+83		CHG&E	OH Utility (Electric)	Perpendicular	Overhead Crossing on Poles along South side of Main Street	B
61248+05		Village of Ravena	Storm Sewer	Perpendicular	Storm Sewer Manhole	B
61248+05	61249+27	Village of Ravena	Storm Sewer	Parallel	Storm drainage on the west side of the alignment.	B
61248+32	61249+14	CHG&E	UG Utility (Electric)	Parallel	UG East side of alignment, North side of Main St	B
61248+32	61249+82	CHG&E	OH Utility (Electric)	Parallel	OH East side of alignment North side of Main st	B
61248+33	61249+04	State Telephone	UG Utility (Telephone)	Parallel	Underground Telephone parallel to alignment and RR tracks in east side of alignment.	B
61248+33	61249+04	State Telephone	UG Utility (Telephone)	Parallel	Underground Telephone parallel to alignment and RR tracks in west side of alignment.	B
61248+33		State Telephone	UG Utility (Telephone)	Perpendicular	UT crosses the alignment.	B
61248+42		National Grid	UG Utility (Gas Distribution)	Perpendicular	Gas line crosses along Railroad Ave	D
61248+69		State Telephone	UG Utility (Telephone)	Perpendicular	UT crosses the alignment.	B
61249+04		State Telephone	UG Utility (Telephone)	Perpendicular	UT crosses the alignment.	B
61249+05		National Grid	UG Utility (Gas Distribution)	Perpendicular	Gas line crosses perpendicular alignment.	D
61249+05		Village of Ravena	Water Line	Perpendicular	Water Line located along North side of Main St	B
61249+05		Village of Ravena	Storm Sewer	Perpendicular	Storm drainage on the west side crosses the alignment.	B
61249+06		State Telephone	UG Utility (Telephone)	Perpendicular	UT crosses the alignment.	B
61249+08		Village of Ravena	Storm Sewer	Perpendicular	Catch basin	B
61249+21	61249+57	Village of Ravena	Storm Sewer	Parallel	Storm drainage on the east side of the alignment.	B
61249+57	61249+85	Village of Ravena	Storm Sewer	Parallel	Storm drainage on the east side of the alignment.	B
61249+57		Village of Ravena	Storm Sewer	Perpendicular	Storm Sewer Manhole	B
61249+79		CHG&E	OH Utility (Electric)	Perpendicular	Overhead Crossing on Poles along South side of Main Street	D

Champlain Hudson Power Express

Upland Co-Located Utility Summation Matrix

Revision Date: 9/22/2023

General Location of Utility		Owner	Utility	Utility		Quality Level (A/B/C/D)
Station (Starting Point for Parallel and Crossing Point for Perpendicular)	Station (Ending Point for Parallel)			Parallel/ Perpendicular	Description (optional)	
61253+24		MCI	UG Utility (Fiber)	Perpendicular	UG Fiber line crosses the alignment.	B
61253+96		MCI	UG Utility (Fiber)	Perpendicular	UG Fiber line crosses the alignment.	B
61258+39	61258+57	CSX RR	Storm Drainage Pipe/Culvert	Parallel	18" HDPE Culvert for Access Road (2 lines)	D
61260+30		CHG&E	OH Utility (Electric)	Perpendicular	(3) Overhead lines crossing RR tracks	B
61269+02		CSX RR	Storm Drainage Pipe/Culvert	Perpendicular	12" RCP Culvert for RR Maintenance Road	B
61284+66		CHG&E	OH Utility (Electric)	Perpendicular	(2) OH High tension lines	B
61284+66		CHG&E	OH Utility (Electric)	Perpendicular	(2) OH High tension lines	B
61285+50	61341+50	CHG&E	OH Utility (Electric)	Parallel	OH Primary lines	B
61285+75		CHG&E	OH Utility (Electric)	Perpendicular	OH electric line	B
61287+52		CHG&E	UG Utility (Gas Transmission)	Perpendicular	UG Gas transmission line AH	B
61288+00	61317+00	CHG&E	UG Utility (Gas Transmission)	Parallel	Underground Gas Transmission line AH	B
61304+50	61305+75	CHG&E	UG Utility (Gas Transmission)	Parallel	AH Gas line is below proposed turnaround area	B
61317+00	61321+45	CHG&E	UG Utility (Gas Transmission)	Parallel	AH Gas line and alignment run parallel	B
61321+45		CHG&E	UG Utility (Gas Transmission)	Perpendicular	Alignment crosses AH gas line	B
61341+77		CHG&E	OH Utility (Electric)	Perpendicular	OH electric line	B
61342+25		CHG&E	OH Utility (Electric)	Perpendicular	OH electric line	B
61342+29		CHG&E	OH Utility (Electric)	Perpendicular	Overhead distribution line crossing alignment	D
61342+30		CHG&E	OH Utility (Electric)	Perpendicular	OH electric line	B
61342+46		CHG&E	OH Utility (Electric)	Perpendicular	OH electric line	B
61342+50	61343+25	CHG&E	OH Utility (Electric)	Parallel	Overhead distribution line crossing alignment	D
61342+50	61345+00	CHG&E	OH Utility (Transmission)	Parallel	OH Transmission line NW crosses	D
61342+53		CHG&E	UG Utility (Electric)	Perpendicular	UG crossing alignment	B
61342+75		CHG&E	OH Utility (Electric)	Perpendicular	Overhead lines crossing alignment	B
61342+82		State Telephone	OH Utility (Telephone)	Perpendicular	OT crosses the alignment.	B
61342+84		CHG&E	OH Utility (Electric)	Perpendicular	OH electric line	B
61342+84		CHG&E	OH Utility (Electric)	Perpendicular	OH electric line	B
61342+85		CHG&E	UG Utility (Electric)	Perpendicular	UG Distribution line crosses alignment	D
61342+86		CHG&E	UG Utility (Electric)	Perpendicular	Underground electric line	B
61342+90		CHG&E	OH Utility (Electric)	Perpendicular	Overhead lines crossing alignment E-W, Primary lines	B
61342+91		State Telephone	OH Utility (Telephone)	Perpendicular	OT crosses the alignment.	B
61342+91		State Telephone	OH Utility (Telephone)	Perpendicular	Telephone pedestal in east of alignment.	B
61342+97		CHG&E	OH Utility (Electric)	Perpendicular	OH electric line	B
61342+98		CHG&E	UG Utility (Electric)	Perpendicular	Underground electric line	B
61343+18		CHG&E	OH Utility (Electric)	Perpendicular	OH electric line	B
61343+22		CHG&E	UG Utility (Electric)	Perpendicular	Underground electric line	B
61346+00	61354+50	CHG&E	OH Utility (Transmission)	Parallel	Overhead lines CN within 15' off alignment	B
61354+90		CHG&E	OH Utility (Transmission)	Perpendicular	Previously thought as distribution, line from substation north of crossing	B
61355+50	61381+00	CHG&E	OH Utility (Electric)	Parallel	OH West side of alignment	B
61357+12		CHG&E	OH Utility (Electric)	Perpendicular	HV Distribution line crossing over the alignment and access rd	B
61358+50	61383+50	CHG&E	OH Utility (Electric)	Parallel	OH West side of alignment	B
61382+51		CHG&E	OH Utility (Transmission)	Perpendicular	Overhead lines CN crosses over HDD	B
61383+62		CSX RR	Storm Drainage Pipe/Culvert	Perpendicular	3'x2' Stone Box Crossing RR Tracks	B

Champlain Hudson Power Express

Upland Co-Located Utility Summation Matrix

Revision Date: 9/22/2023

General Location of Utility		Owner	Utility	Utility		Quality Level (A/B/C/D)
Station (Starting Point for Parallel and Crossing Point for Perpendicular)	Station (Ending Point for Parallel)			Parallel/ Perpendicular	Description (optional)	
61383+85	61452+50	CHG&E	OH Utility (Electric)	Parallel	OH East side of alignment	B
61384+06		CHG&E	OH Utility (Electric)	Perpendicular	(2) overhead lines, paralleling RR tracks on the west	B
61384+69		State Telephone	UG Utility (Telephone)	Perpendicular	UT crosses the alignment.	B
61385+00	61452+00	CHG&E	OH Utility (Electric)	Parallel	OH East side of alignment	B
61386+51		State Telephone	UG Utility (Telephone)	Perpendicular	UT crosses the alignment.	B
61386+51	61413+50	State Telephone	UG Utility (Telephone)	Parallel	Underground Telephone parallel in east side of alignment.	B
61389+53		CSX RR	Storm Sewer	Perpendicular	18" VCP culvert crosses alignment.	B
61389+53		CSX RR	Storm Sewer	Perpendicular	18" VCP culvert crosses alignment of HDD 96.A and 96.B.	B
61391+17		CHG&E	OH Utility (Electric)	Perpendicular	Overhead Line from solar farm	D
61394+69		CHG&E	OH Utility (Electric)	Perpendicular	Overhead Line from solar farm	B
61415+21		MCI	UG Utility (Fiber)	Perpendicular	UG Fiber line crosses the alignment.	B
61415+40		MCI	UG Utility (Fiber)	Perpendicular	UG Fiber line crosses the alignment.	B
61415+61		CHG&E	OH Utility (Electric)	Perpendicular	Overhead Main	B
61415+88		MCI	UG Utility (Fiber)	Perpendicular	Fiber optic pedestal in west of alignment.	B
61415+90	61418+21	CHG&E	OH Utility (Electric)	Parallel	OH West side of alignment	B
61416+09	61416+61	CSX RR	Storm Drainage Pipe/Culvert	Parallel	24" CMP culvert crosses state route 144.	B
61416+20		CSX RR	Storm Drainage Pipe/Culvert	Perpendicular	15" CMP culvert crosses access road and alignment of HDD 97.	B
61416+36		MCI	UG Utility (Fiber)	Perpendicular	Fiber line crossed by HDD	B
61416+43		CSX RR	UG Utility (Electric)	Perpendicular	Underground electric line	B
61416+47		CSX RR	UG Utility (Electric)	Perpendicular	Underground electric line	B
61416+52	61416+94	MCI	UG Utility (Fiber)	Parallel	Underground fiber optic in east of alignment.	B
61416+55		CHG&E	UG Utility (Electric)	Perpendicular	Underground electric line	B
61416+57		CHG&E	UG Utility (Electric)	Perpendicular	Underground electric line	B
61416+64		CHG&E	UG Utility (Electric)	Perpendicular	Underground electric line	B
61416+65		CSX RR	Storm Drainage Pipe/Culvert	Perpendicular	9" CMP culvert crosses state route 144.	B
61416+79		CHG&E	UG Utility (Electric)	Perpendicular	Underground electric line	B
61416+81		MCI	UG Utility (Telephone)	Perpendicular	UT crosses the alignment.	B
61416+94		MCI	UG Utility (Fiber)	Perpendicular	UG Fiber line crosses the alignment.	B
61416+94	62492+13	MCI	UG Utility (Fiber)	Parallel	Underground fiber optic in west of alignment.	B
61417+08		CHG&E	UG Utility (Electric)	Perpendicular	UG Electric line is crossing	D
61417+16		CHG&E	UG Utility (Electric)	Perpendicular	UG line from vault on the east	D
61417+44		CHG&E	UG Utility (Electric)	Perpendicular	Crossing on East side of RR tracks South of Route 144	B
61417+45		MCI	UG Utility (Telephone)	Perpendicular	UT crosses the alignment.	B
61417+45	61419+17	State Telephone	UG Utility (Telephone)	Parallel	Underground Telephone parallel in west side of alignment.	B
61417+75		CSX RR	UG Utility (Electric)	Perpendicular	Rail signals	B
61418+82	61420+00	CSX RR	UG Utility (Electric)	Parallel	Underground electric line runs north and south	B
62420+00	62452+14	CHG&E	OH Utility (Electric)	Parallel	OH East side of alignment	B
62420+00	62429+00	CHG&E	UG Utility (Electric)	Parallel	Underground electric line runs north and south	B
62431+94		CSX RR	Storm Drainage Pipe/Culvert	Perpendicular	3.85'x3.25' Stone Box Crossing RR Tracks	B
62445+78		State Telephone	UG Utility (Telephone)	Perpendicular	Telephone junction box parallel to RR tracks.	B
62445+78		State Telephone	UG Utility (Telephone)	Perpendicular	Telephone pedestal parallel to RR tracks.	B
62452+64		CHG&E	OH Utility (Electric)	Perpendicular	OH crossing alignment	B

Champlain Hudson Power Express

Upland Co-Located Utility Summation Matrix

Revision Date: 9/22/2023

General Location of Utility		Owner	Utility	Utility		Quality Level (A/B/C/D)
Station (Starting Point for Parallel and Crossing Point for Perpendicular)	Station (Ending Point for Parallel)			Parallel/ Perpendicular	Description (optional)	
62453+36		CHG&E	OH Utility (Electric)	Perpendicular	OH Primary line	B
62455+36		CSX RR	Storm Sewer	Perpendicular	60" CMP culvert crosses the alignment,	B
62456+34		CHG&E	OH Utility (Transmission)	Perpendicular	CN Transmission Line	B
62457+07		CHG&E	OH Utility (Electric)	Perpendicular	OH Primary line	B
62458+00	62465+00	CHG&E	OH Utility (Electric)	Parallel	OH East side of alignment	B
62458+10	62464+00	CHG&E	OH Utility (Electric)	Parallel	Overhead lines on the east side of the alignment	B
62464+81		CHG&E	OH Utility (Electric)	Perpendicular	OH Primary line	B
62465+38		CHG&E	OH Utility (Transmission)	Perpendicular	CN Transmission Line	B
62465+50	62488+00	CHG&E	OH Utility (Electric)	Parallel	OH West side of alignment	B
62466+00	62485+50	CHG&E	OH Utility (Electric)	Parallel	OH West side of alignment	B
62472+53		CSX RR	Storm Sewer	Perpendicular	48" HDPE Sewer crosses access road.	B
62485+03		CSX RR	Storm Drainage Pipe/Culvert	Perpendicular	48" HDPE culvert crossing alignment.	B
62486+39		CHG&E	OH Utility (Transmission)	Perpendicular	CN Transmission Line crossing (HDD)	B
62487+66		CHG&E	OH Utility (Electric)	Perpendicular	OH electric line	B
62488+77		CHG&E	OH Utility (Electric)	Perpendicular	OH Primary line (HDD)	B
62489+00	62616+50	CHG&E	OH Utility (Electric)	Parallel	OH East side of alignment	B
62490+10		CHG&E	OH Utility (Electric)	Perpendicular	OH electric line	B
62492+13		MCI	UG Utility (Fiber)	Perpendicular	UG Fiber line crosses the alignment.	B
62492+13	62561+01	MCI	UG Utility (Fiber)	Parallel	Underground fiber optic in east of alignment.	B
62492+81		MCI	UG Utility (Fiber)	Perpendicular	UG Fiber line crosses the alignment.	B
62515+39		CSX RR	Storm Drainage Pipe/Culvert	Perpendicular	48" Steel Pipe Crossing RR Tracks and principal alignment.	B
62515+47		CSX RR	Storm Drainage Pipe/Culvert	Perpendicular	48" Steel Pipe Crossing RR Tracks and principal alignment.	B
62515+51		CSX RR	Storm Drainage Pipe/Culvert	Perpendicular	48" Steel Pipe Crossing RR Tracks and principal alignment.	B
62515+58		CSX RR	Storm Drainage Pipe/Culvert	Perpendicular	48" Steel Pipe Crossing RR Tracks and principal alignment.	B
62537+13		CSX RR	Storm Drainage Pipe/Culvert	Perpendicular	48" CMP Crossing RR Tracks and alignment.	B
62537+13		CSX RR	Storm Drainage Pipe/Culvert	Perpendicular	36" Steel pipe crossing RR Tracks	B
62570+37		CSX RR	UG Utility (Electric)	Perpendicular	UG East side of alignment	B
62579+47		CSX RR	Storm Drainage Pipe/Culvert	Perpendicular	2.7'x4.5' Concrete Box crosses RR Tracks.	B
62579+49		CSX RR	Storm Drainage Pipe/Culvert	Perpendicular	2.7'x4.5' Concrete Box crosses alignment of HDD 101.A.	B
62611+05		CSX RR	Storm Drainage Pipe/Culvert	Perpendicular	10" HDPE Culvert Crossing RR Tracks	B
62615+18		MCI	UG Utility (Fiber)	Perpendicular	UG Fiber line crosses the alignment.	B
62615+90		MCI	UG Utility (Fiber)	Perpendicular	UG Fiber line crosses the alignment.	B
62617+20		CHG&E	OH Utility (Electric)	Perpendicular	Distribution line	B
62618+04		CHG&E	OH Utility (Transmission)	Perpendicular	NC Transmission line	B
62640+57	62667+00	CHG&E	OH Utility (Electric)	Parallel	Distribution line crosses from east to west of RR Tracks	B
62652+31		CSX RR	Storm Drainage Pipe/Culvert	Perpendicular	18" HDPE crosses alignment and River RD.	B
62662+08	62664+75	Village of Coxsackie	Water Line	Parallel	Water line on the west side of Lawrence Av	D
62664+72		Village of Coxsackie	Water Line	Perpendicular	Waterline crosses perpendicular our alignments.	D
62664+72		CHG&E	OH Utility (Electric)	Perpendicular	OH electric line on Lawrence Av	B
62664+75		Village of Coxsackie	Water Line	Perpendicular	Water line crossing at Lawrence Ave towards east	D
62664+78		CHG&E	OH Utility (Electric)	Perpendicular	OH line crosses alignment	B
62668+22		CHG&E	OH Utility (Electric)	Perpendicular	OH electric line	B

Champlain Hudson Power Express

Upland Co-Located Utility Summation Matrix

Revision Date: 9/22/2023

General Location of Utility		Owner	Utility	Utility		Quality Level (A/B/C/D)
Station (Starting Point for Parallel and Crossing Point for Perpendicular)	Station (Ending Point for Parallel)			Parallel/ Perpendicular	Description (optional)	
62668+22		CHG&E	OH Utility (Electric)	Perpendicular	OH line crosses alignment	B
62668+82	62678+80	CHG&E	OH Utility (Electric)	Parallel	OH electric line west side of alignment	B
62668+82	62683+00	CHG&E	OH Utility (Electric)	Parallel	OH West side of alignment	B
62677+69		CHG&E	OH Utility (Electric)	Perpendicular	OH electric line	B
62678+44		CHG&E	OH Utility (Electric)	Perpendicular	OH electric line	B
62678+44		State Telephone	UG Utility (Telephone)	Perpendicular	Telephone junction box in east of RR tracks.	B
62678+51		CHG&E	OH Utility (Electric)	Perpendicular	OH line crosses alignment	B
62678+80	62681+65	CHG&E	OH Utility (Electric)	Parallel	OH line crosses alignment	B
62678+83		CSX RR	Storm Sewer	Perpendicular	Unknown size and material storm sewer crosses RR Tracks (4 lines)	B
62678+84		CHG&E	OH Utility (Electric)	Perpendicular	OH electric line	B
62678+88		State Telephone	UG Utility (Telephone)	Perpendicular	UT crosses the alignment.	B
62678+92		CHG&E	OH Utility (Electric)	Perpendicular	OH line crosses alignment	B
62678+92		State Telephone	UG Utility (Telephone)	Perpendicular	UT crosses the alignment.	B
62678+95		CHG&E	OH Utility (Electric)	Perpendicular	OH electric line	B
62679+03	62695+76	State Telephone	UG Utility (Telephone)	Parallel	Underground telephone line in west of alignment.	B
62679+07		CSX RR	Storm Sewer	Perpendicular	Unknown size and material storm sewer.	B
62679+55		Village Of Coxsackie	Water Line	Perpendicular	Waterline crosses perpendicular our alignments.	D
62680+12		CHG&E	OH Utility (Electric)	Perpendicular	OH electric line	B
62681+29		CHG&E	OH Utility (Electric)	Perpendicular	OH line crosses alignment	B
62682+90		CSX RR	Storm Sewer	Perpendicular	Unknown size and material storm sewer crosses RR Tracks and access road.	B
62688+02		CSX RR	Storm Drainage Pipe/Culvert	Perpendicular	24" HDPE culvert.	B
62688+09		CSX RR	Storm Drainage Pipe/Culvert	Perpendicular	12" Cast Iron Culvert.	B
62688+14		CSX RR	Storm Drainage Pipe/Culvert	Perpendicular	12" CMP storm culvert.	B
62688+14		CSX RR	Storm Drainage Pipe/Culvert	Perpendicular	24" HDPE culvert.	B
62688+37		CHG&E	UG Utility (Gas)	Perpendicular	Gas line - Possible feed of old Valve factory	D
62688+48		CHG&E	UG Utility (Gas Distribution)	Perpendicular	Gas line crossing over our alignments.	D
62688+99		CSX RR	Storm Sewer	Perpendicular	9" CPP Culvert crosses access road.	B
62691+62	62701+12	CHG&E	OH Utility (Electric)	Parallel	OH line east side of alignment	B
62693+78		CHG&E	OH Utility (Electric)	Perpendicular	OH line crosses alignment	B
62695+47		MCI	UG Utility (Fiber)	Perpendicular	UG Fiber line crosses the alignment.	B
62695+47	62748+54	MCI	UG Utility (Fiber)	Parallel	Underground fiber optic in east of alignment.	B
62695+73		MCI	UG Utility (Fiber)	Perpendicular	UG Fiber line crosses the alignment.	B
62695+76		MCI	UG Utility (Telephone)	Perpendicular	UT crosses the alignment.	B
62695+76	62717+06	State Telephone	UG Utility (Telephone)	Parallel	Underground telephone line in east of alignment.	B
62696+03		MCI	UG Utility (Telephone)	Perpendicular	UT crosses the alignment.	B
62696+06		CHG&E	UG Utility (Electric)	Perpendicular	UG crosses alignment	B
62696+06	62709+56	CHG&E	UG Utility (Electric)	Parallel	UG east side of alignment	B
62696+33		CHG&E	UG Utility (Electric)	Perpendicular	Underground electric line	B
62697+36		CHG&E	OH Utility (Electric)	Perpendicular	OH crosses alignment	B
62697+36	62708+19	CHG&E	OH Utility (Electric)	Parallel	OH east side of alignment	B
62708+68		CHG&E	UG Utility (Electric)	Perpendicular	UG line perpendicular to alignment	B
62708+74	62716+15	CHG&E	OH Utility (Electric)	Parallel	OH line west side of alignment	B

Champlain Hudson Power Express

Upland Co-Located Utility Summation Matrix

Revision Date: 9/22/2023

General Location of Utility		Owner	Utility	Utility		Quality Level (A/B/C/D)
Station (Starting Point for Parallel and Crossing Point for Perpendicular)	Station (Ending Point for Parallel)			Parallel/ Perpendicular	Description (optional)	
62708+81		CHG&E	OH Utility (Electric)	Perpendicular	OH line crosses alignment	B
62708+82		CHG&E	UG Utility (Gas Distribution)	Perpendicular	QLD data shows there is perpendicular . Vertical Distance of this gas line needs to be measured.	D
62708+82		CHG&E	UG Utility (Gas Transmission)	Perpendicular	AH gas line crossing	D
62708+83		CHG&E	OH Utility (Electric)	Perpendicular	Overhead Electric crosses the alignment.	B
62708+86		CHG&E	UG Utility (Gas)	Perpendicular	Gas Main Crossing of RR Tracks along North side of Bailey St	B
62708+94		CHG&E	UG Utility (Gas Transmission)	Perpendicular	AH Gas Transmission Crossing of RR Tracks from curve on Plank Rd	B
62709+43		CHG&E	OH Utility (Electric)	Perpendicular	OH electric line crosses alignment	B
62709+48		Village of Coxsackie	Water Line	Perpendicular	Water main along RR tracks	B
62709+49		Village of Coxsackie	Water Line	Perpendicular	Water Main Crossing RR Tracks along South side of Baily St	B
62709+59	62715+97	Village of Coxsackie	Water Line	Parallel	Water line along Sunser Blvd	B
62712+93		CHG&E	OH Utility (Electric)	Perpendicular	OH Electric Primary distribution line along Plank Rd / Sunset Blvd	B
62715+51		Village of Coxsackie	Water Line	Perpendicular	Water line crosses Plank Rd	B
62715+97		CHG&E	OH Utility (Electric)	Perpendicular	OH electric line crosses alignment	B
62715+99		CHG&E	UG Utility (Gas Transmission)	Perpendicular	AH Gas Transmission line	D
62716+84		CSX RR	Storm Sewer	Perpendicular	Unknown size and material storm sewer in south of Plank RD.	B
62717+29	62747+58	CSX RR	UG Utility (Electric)	Parallel	Underground electric line west side of alignment	B
62730+53		CSX RR	Storm Drainage Pipe/Culvert	Perpendicular	24" Steel culvert Crossing RR Tracks.	B
62743+89	62746+79	CSX RR	UG Utility (Electric)	Parallel	OH east side of alignment	B
62746+79	62749+40	CSX RR	UG Utility (Electric)	Parallel	OH west side of alignment	B
62746+79		CSX RR	UG Utility (Electric)	Perpendicular	Underground electric line	B
62747+58		CSX RR	UG Utility (Electric)	Perpendicular	Underground electric line	B
62747+58	63757+63	CSX RR	UG Utility (Electric)	Parallel	UG electric line west side of alignment	B
62747+68	62749+73	CHG&E	OH Utility (Electric)	Parallel	OH east side of alignment	B
62748+06		MCI	UG Utility (Fiber)	Perpendicular	UG Fiber line crosses the alignment.	B
62748+54		MCI	UG Utility (Fiber)	Perpendicular	UG Fiber line crosses the alignment.	B
62748+54	63826+02	MCI	UG Utility (Fiber)	Parallel	Underground fiber optic in west of alignment.	B
62748+75		State Telephone	UG Utility (Telephone)	Perpendicular	UT crosses the alignment.	B
62748+96		State Telephone	UG Utility (Telephone)	Perpendicular	Telephone junction box crosses the alignment.	B
62748+96		State Telephone	UG Utility (Telephone)	Perpendicular	Telephone pedestal crosses the alignment.	B
62748+96		State Telephone	UG Utility (Telephone)	Perpendicular	Projection of Underground Telephone crosses the alignment.	B
62748+97	62749+37	CSX RR	Storm Drainage Pipe/Culvert	Parallel	6" CMP Culvert crosses Flint Mine RD.	B
62748+98	62749+38	CSX RR	Storm Drainage Pipe/Culvert	Parallel	6" CMP Culvert crosses Flint Mine RD.	B
62748+99		State Telephone	UG Utility (Telephone)	Perpendicular	UT crosses the alignment.	B
62749+05		State Telephone	UG Utility (Telephone)	Perpendicular	UT crosses the alignment.	B
62749+06		State Telephone	UG Utility (Telephone)	Perpendicular	UT crosses the alignment.	B
62749+33		CHG&E	OH Utility (Electric)	Perpendicular	OH electric line crosses alignment	B
62749+38		State Telephone	UG Utility (Telephone)	Perpendicular	OT in east of alignment.	B
62749+73		CHG&E	OH Utility (Electric)	Perpendicular	OH electric line crosses alignment	B
62750+04		CHG&E	OH Utility (Electric)	Perpendicular	OH electric line	B
62750+04	62755+52	CHG&E	OH Utility (Electric)	Parallel	OH electric line west side of alignment	B
62751+21		CHG&E	OH Utility (Electric)	Perpendicular	OH electric line	B
62751+21	62755+52	CHG&E	OH Utility (Electric)	Parallel	OH electric line west side of alignment	B

Champlain Hudson Power Express

Upland Co-Located Utility Summation Matrix

Revision Date: 9/22/2023

General Location of Utility		Owner	Utility	Utility		Quality Level (A/B/C/D)
Station (Starting Point for Parallel and Crossing Point for Perpendicular)	Station (Ending Point for Parallel)			Parallel/ Perpendicular	Description (optional)	
63750+00	63752+01	CHG&E	OH Utility (Electric)	Parallel	OH electric line west side of alignment	B
63750+00	63817+23	CHG&E	OH Utility (Electric)	Parallel	OH electric line west side of alignment	B
63815+83	63818+91	CHG&E	OH Utility (Electric)	Parallel	OH electric line west side of alignment	B
63817+12		CHG&E	OH Utility (Electric)	Perpendicular	OH electric line	B
63817+15		CHG&E	OH Utility (Electric)	Perpendicular	OH electric line	B
63817+17		State Telephone	UG Utility (Telephone)	Perpendicular	UT crosses the alignment.	B
63817+18		State Telephone	UG Utility (Telephone)	Perpendicular	Telephone junction box crosses the alignment.	B
63817+20		State Telephone	UG Utility (Telephone)	Perpendicular	UT crosses the alignment.	B
63817+23		CHG&E	OH Utility (Electric)	Perpendicular	OH electric line	B
63817+48		CHG&E	UG Utility (Electric)	Perpendicular	Underground electric line	D
63817+53		CHG&E	OH Utility (Electric)	Perpendicular	OH electric line	B
63817+53	63825+77	CHG&E	OH Utility (Electric)	Parallel	OH electric line east side of alignment	B
63818+91		CHG&E	OH Utility (Electric)	Perpendicular	OH electric line	B
63819+16		CHG&E	OH Utility (Electric)	Perpendicular	OH electric line	B
63820+84	63822+57	CHG&E	OH Utility (Transmission)	Parallel	HDD runs under NC line paralleling and crossing at multiple points	B
63820+84	63828+61	CHG&E	OH Utility (Electric)	Parallel	OH Electric primary distribution line in between conduits of HDD 108	B
63822+67		CHG&E	OH Utility (Electric)	Perpendicular	OH electric line	B
63824+55		CHG&E	OH Utility (Electric)	Perpendicular	OH electric line	B
63828+07		CHG&E	OH Utility (Electric)	Perpendicular	OH electric line crosses alignment	B
63829+87	63842+36	CHG&E	OH Utility (Electric)	Parallel	OH electric line west side of alignment	B
63829+87		CHG&E	OH Utility (Electric)	Perpendicular	OH electric line	B
63842+36	63956+93	CHG&E	OH Utility (Transmission)	Parallel	NC line and alignment run in the same direction	B

National Grid Clearance Exceptions

Champlain Hudson Power Express																			
Upland Co-Located Utility Summation Matrix																			
Revision Date: 6/19/2023																			
Segment (s)	General Location of Utility				Owner	Utility	Latitude & Longitude of the interaction	Closest address to the interaction	Distance from Closest address to Interaction location (US FT)	Direction from closest address to interaction location	Invert/Depth (feet)	Utility Length (feet)	Offset	Utility		Comments	Quality Level (A/B/C/D)	Design meets original design intent? (5' H, 2' V)	Does current design meet NG Requirement? (H=>5' - ED) (H=>50' - ET) (H=>15', V>4' GT) (V=>4' GD)
	Station (Starting Point for Parallel and Crossing Point for Perpendicular)	Station (Ending Point for Parallel)	Drawing sheet(s) #	HDD Drawing (or related reference drawing)										Parallel/ Perpendicular	Description (optional)				
10	60147+60		C-110		National Grid	UG Utility (Gas Distribution)	42.4988173,-73.8192779	2020 Rte 9W, Selkirk, NY 12158, USA	432.63	N 59º E ↗				Perpendicular	Gas line to LaFarge Ravena Plant	Abandoned line per ticket 02023-000-922-00. The vertical separation is about 2', although there is no criteria set for abandoned facilities	B	Yes	No*
10	60168+56		C-112	C-304 TO C-304C	National Grid	OH Utility (Electric)	42.493359,-73.818199	2093 Rte 9W, Selkirk, NY 12158, USA	457.61	N 86º E ↗			43' R	Perpendicular	Pole with underground conection	Utility pole is horizontally within 1' off HDD 93 conduit 2. The vertical distance between the top of the HDD to existing ground is ~22'	B	Yes	No
10	61018+75		C-168		National Grid	OH Utility (Transmission)	42.268917,-73.848069	9300 US Route 9W, Athens, NY 12015, USA	1230.59	S 46º E ↘				Perpendicular	(2) Overhead Transmission towers with multiple lines	Crossing angle is about 45', from the closest point of Tower to the trench the horizontal separation is ~35'. Depth of excavation is ~5.5'	B	Yes	No
10	61032+01	61036+00	C-169 to C-170		National Grid	OH Utility (Transmission)	42.265423,-73.849492	9050 US Route 9W, Athens, NY 12015, USA	2443.43	S 89º E ↘		399		Perpendicular	(3) Overhead Transmission towers Crossing RR Tracks	The trench is under transmission lines, the horizontal separation from the closest point of the tower to CL is ~30'. Depth of excavation is ~5.5'	B	Yes	No

Utility quality level defined as follows:

Four separate quality levels of subsurface utility facility information are generally recognized and are as follows:

Quality Level A (QLA): Quality Level A is the highest degree of accuracy. Information shown on the plans has been obtained by the actual exposure (or verification of previously exposed and surveyed utility facilities) of subsurface utilities, using (typically) minimally intrusive excavation equipment to determine their precise horizontal and vertical positions, as well as their other utility facility attributes. (Shown as QLA)

Quality Level B (QLB): Quality Level B is the second highest degree of accuracy. The information shown on the plans has been obtained through the application of appropriate surface geophysical methods (i.e., underground cameras, radar, sonar, tone outs, etc.) to identify the existence and appropriate horizontal position of subsurface utility facilities. Quality Level B data are reproducible by surface geophysics at any point of their depiction. The information was surveyed to applicable tolerances and reduced onto the plans. No excavations were performed. (Shown as QLB)

Quality Level C (QLC): Quality Level C is the third highest degree of accuracy. The information shown on the plans has been obtained by surveying and plotting visible above-ground utility features and by using professional judgement in correlating this information to Quality Level D information. (Shown as QLC)

Quality Level D (QLD): Quality Level D is the lowest degree of accuracy. The information shown on the plans was derived solely from existing NYSDOT and/or utility company records or recollections. (Shown as QLD)

**Champlain Hudson Power Express
Upland Co-Located Infrastructure
Fact Sheet**

Project Background

- The Champlain Hudson Power Express (CHPE) is a 339-mile underground and underwater high voltage direct current (HVDC) electric transmission line that will import up to 1,250 MW of renewable power from Canada and send it to the New York City metro area.
- Transmission Developers Inc. (TDI) is the developer of the project.
- TDI is owned by Blackstone, a company based in New York.
- The transmission line is fully permitted at the State and Federal level and has been under development for roughly 10 years.
- The upland portion of the transmission line will be located primarily within transportation corridor (railway or highway) rights-of-way.

Construction Timing & EM&CP

- Construction is anticipated for 2022 -2025
- A map of the Project is included as Attachment A.
- Prior to construction commencing, CHPE must file an Environmental Management & Construction Plan (EM&CP) and receive approval from the State for this segment prior to installing the transmission line cables. The EM&CP will include detailed construction means and methods, and schedule. The EM&CP will be subject to public review and your organization will have the opportunity to review it before it becomes final.

- In preparation for that filing, TDI needs to coordinate with owners co-located infrastructure (CI) along this permitted route.
- TDI would like to (1) establish a contact with someone at your company/town who is responsible for this CI; (2) understand your process for discussing utility crossings; and (3) answer questions.

Overview of CI crossings and CHPE construction

- The underground portion of the buried transmission line will be installed in a trench approximately three (3) feet wide and five (5) feet deep and will require minimal or no maintenance during its 60+ year operational life (Typical trench detail - Attachment B).
- Within the trench, the cables will be installed in plastic conduit. There will also be a fiber optic cable installed within the trench.
- Proposed underground installation will be primarily in the shoulders of roadways, under the road's pavement or along the edge of the Canadian Pacific or CSX railroad rights-of-way.
- Once the cables are installed, the ground will be restored.
- Directly over the transmission lines, vegetation maintenance will be required to ensure deep rooted trees do not grow. Otherwise, no maintenance is needed.
- TDI has worked closely with the local towns, NYSDOT, and the Canadian Pacific and CSX railroads regarding CHPE, and it is coordinating the final design with them.
- Depending on the depth of the existing overland CI infrastructure, if within the 15 ft depth range, our preferred approach is to install our HVDC cables

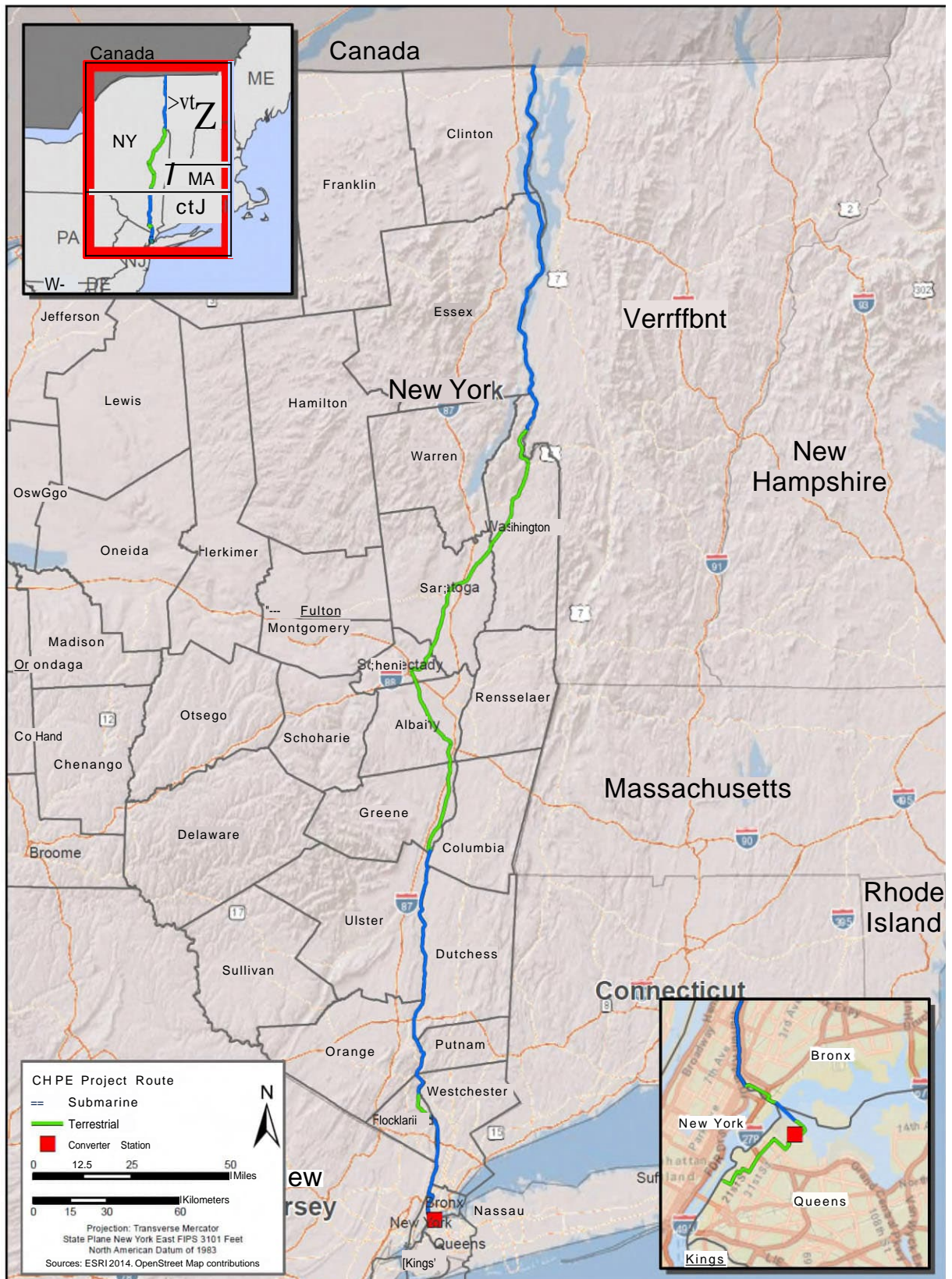
under all buried infrastructure. TDI will accomplish that by working with the CI-owners to establish the best methodology for exposing, supporting, and performing our cable installation under the existing infrastructure. (Typical crossing under CI - Attachment C)

- Our proposal for crossing under CI will follow industry standard crossing methods. Adequate temporary construction supports will be provided for the exposed co-located utilities below grade.
- For deeper CI (usually greater than 15ft) or when there is significant concentration of CI infrastructure within a particular area, horizontal directional drilling (HDD) will be employed to cross under the existing utilities.
- For proposed HDDs, two bored conduits approximately separated at a minimum distance of 15 ft will be installed following the required depth to house the HVDC cables.
- In the event TDI cannot install its cable conduit under buried infrastructure, it will cross over the existing CI utilities via open trench, provided that the minimum cover of 60 inches can be provided over the proposed HVDC cables in roadway and 30 inches of cover in roadside, other vegetated areas and within railroad right-of-way per the below detail (Typical crossing over CI - Attachment D).
- In crossing the existing co-located utilities, TDI and their contractors shall also install the proposed HVDC cables with at least the minimum clearance criteria specified by each individual utility owner.
- Regarding proposed trench installation over existing large municipal storm culverts, an underground utility bridging support structure will be

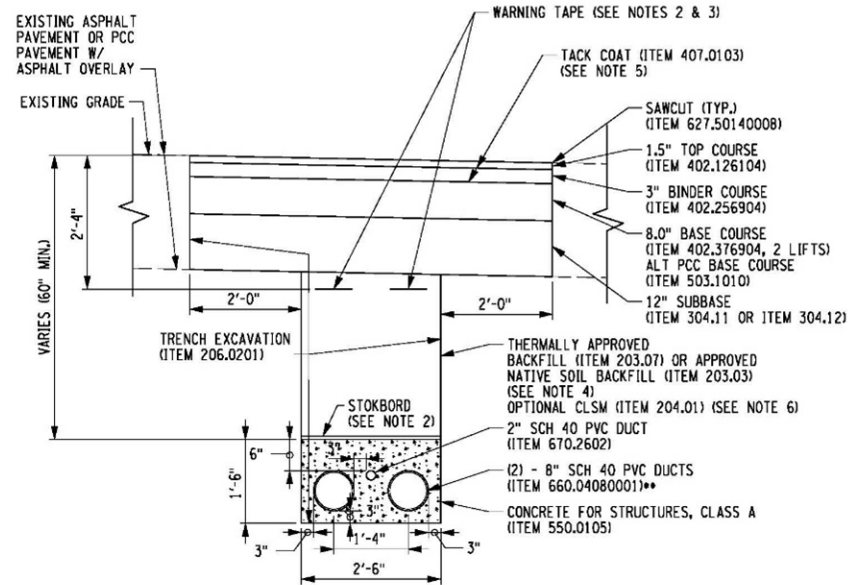
constructed to allow the proposed HVDC cables to be self-supported across the span in the event the storm culverts require future repair or replacement. (Typical CI support- Attachment E.)

- As part of development of a crossing plan for your CI, TDI will work with the respective CI owners, to:
 - o Establish and conduct a subsurface utility survey to determine the precise location of the infrastructure within the limits of the proposed CHPE cable installation, including:
 - Depth from roadway and/or ground surface
 - Physical width and footprint occupied by the CI
 - Existence of CI supporting structures to be avoided
 - o Confirm proposed crossing installation including the requirements for CI temporary support.
 - o Eventually, based on this information, TDI will work with each CI owner to consummate a formal CI agreement as necessary.

Attachment A



Attachment B



TYPICAL FLAT CABLE ALIGNMENT IN DUCTBANK
TRENCH CROSS SECTION (ROADWAY INSTALLATION)

SCALE: 1"=2'

ITEM	DESCRIPTION
203.03	EMBANKMENT IN PLACE
203.07	SELECT GRANULAR FILL
204.01	CONTROLLED LOW STRENGTH MATERIAL
206.0201	TRENCH AND CULVERT EXCAVATION
304.11	SUBBASE COURSE, TYPE 1
304.12	SUBBASE COURSE, TYPE 2
402.126104	12.5 F1 TOP COURSE HMA, 60 SERIES COMPACTION
402.256904	25 F9 BINDER COURSE HMA, 60 SERIES COMPACTION
402.376904	37.5 F9 BASE COURSE HMA, 60 SERIES COMPACTION
407.0103	STRAIGHT TACK COAT
555.0105	CONCRETE FOR STRUCTURES, CLASS A
627.50140008*	CUTTING PAVEMENT
660.04080001**	FURNISH AND INSTALL PVC UTILITY CONDUIT - 8 INCH
670.2602	RIGID PLASTIC CONDUIT, 2"

*SPECIAL SPEC
**SPECIAL NOTE:

FOLLOW SPECIAL SPECIFICATION 660.04060001. CONDUIT SIZE, FITTINGS AND CONNECTIONS TO BE REVISED TO 8" AND SCHEDULE TO BE SCH 40.

NOTES:

1. FILL MATERIAL SHALL HAVE THERMAL RESISTIVITY OF 1.0 K*m/W OR LESS.
2. FITTINGS, CONNECTIONS, WARNING TAPE, AND STOKBORD WILL BE INCLUDED UNDER ITEM 660.04080001.
3. WARNING TAPE DEPTH TO MEET THE REQUIREMENTS OF NEC SECTION 300.5(D)(3).
4. FOR INSTALLATION NOT LOCATED IN ROADWAYS, APPROVED NATIVE SOIL BACKFILL WILL EXTEND TO WITHIN FOUR (4) INCHES OF EXISTING GRADE.
5. TACK COAT SHALL BE APPLIED TO ALL EXPOSED EDGES AND BETWEEN EVERY LIFT.

ALTERED ON: SIGNATURE: STAMP:	APPROVED ON: SIGNATURE: STAMP:
-------------------------------------	--------------------------------------

IT IS A VIOLATION OF LAW FOR ANY PERSON, UNLESS THEY ARE ACTING UNDER THE DIRECTION OF A LICENSED PROFESSIONAL ENGINEER, ARCHITECT, LANDSCAPE ARCHITECT, OR LAND SURVEYOR, TO ALTER AN ITEM IN ANY WAY. IF AN ITEM BEARING THE STAMP OF A LICENSED PROFESSIONAL IS ALTERED, THE ALTERING ENGINEER, ARCHITECT, LANDSCAPE ARCHITECT, OR LAND SURVEYOR SHALL STAMP THE DOCUMENT AND INCLUDE THE NOTATION "ALTERED BY" FOLLOWED BY THEIR SIGNATURE, THE DATE OF SUCH ALTERATION, AND A SPECIFIC DESCRIPTION OF THE ALTERATION.

REVISIONS			
DATE	DESCRIPTION	BY	SYN

TRANSMISSION DEVELOPERS, INC.
1301 AVENUE OF THE AMERICAS
NEW YORK, NY 10019-6022

AECOM

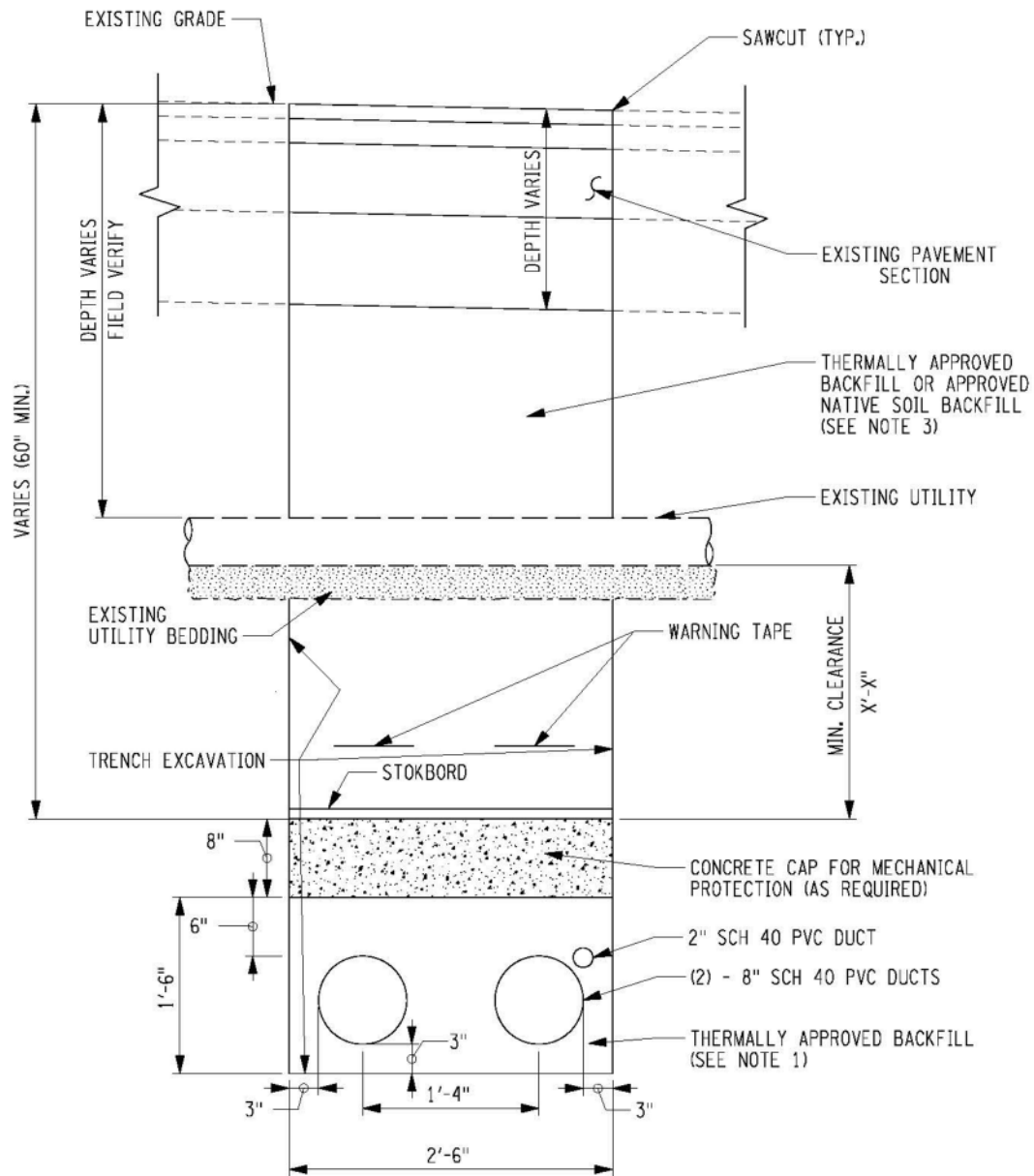
TITLE OF PROJECT
CHEAMPLAIN HUDSON POWER EXPRESS
LOCATION OF PROJECT
TITLE OF DRAWING
TYPICAL TRENCH CROSS SECTION
WITH PVC CONDUIT IN DUCTBANK

CONTRACT NUMBER:
60323056

DATE:
03/04/2021

DRAWING NUMBER:

Attachment C



TYPICAL UTILITY CROSSING DETAIL

NOTES:

NOT TO SCALE

1. FILL MATERIAL SHALL HAVE THERMAL RESISTIVITY OF 1.0 K•m/W OR LESS.
2. WARNING TAPE DEPTH TO MEET THE REQUIREMENTS OF NEC SECTION 300.5(D)(3).
3. FOR INSTALLATION NOT LOCATED IN ROADWAYS, APPROVED NATIVE SOIL BACKFILL WILL EXTEND TO WITHIN FOUR (4) INCHES OF EXISTING GRADE.

CHAMPLAIN HUDSON POWER EXPRESS TRANSMISSION DEVELOPERS, INC.	PROJECT TITLE	LOCATIONS
	DRAWING TITLE	DATE:
AECOM	TYPICAL UTILITY CROSSING DETAIL	07/07/2020
		DRAWING NUMBER:
		FIG X.X

Attachment E



AECOM U.S.A., Inc.
40 British American Blvd.
Latham, NY 12110

PROJECT NO. 60323056

Prepared By: JMD

Date: 12/11/2020

Reviewed By: MWO

Date: 12/11/2020

Approved By:

Date:

CALCULATION SHEET

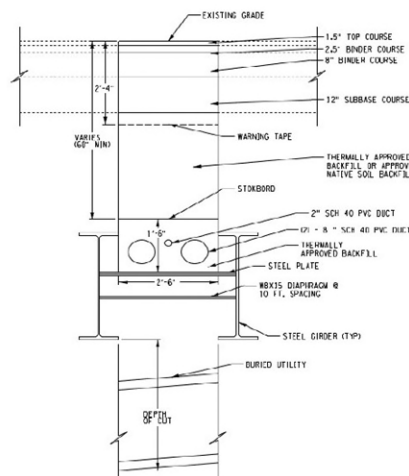
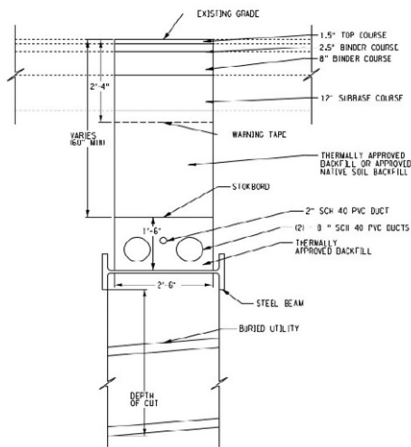
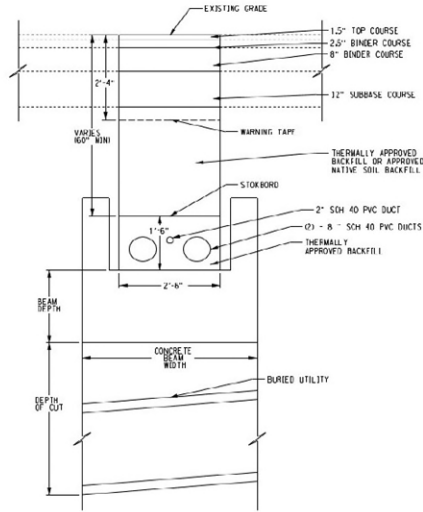
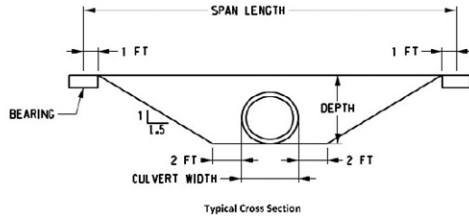
Client: TDI

Subject: Underground Utility Support

Project: CHPE

Description: Preliminary Review of Utility Support Options over culvert replacements

Details:



Support Sizes

Culvert Width (ft)	Depth of Cut (ft)															
	5	6	7	8	9	10	11	12	13	14	15	16	17	18	19	20
1.38	1-A	2-A	3-C	4-D	5-E	5	5	5	5	5	6	6	6	6	6	6
1.65	1-A	2-A	3-C	4-D	5-E	5	5	5	5	5	6	6	6	6	6	6
1.92	1-A	2-A	3-C	4-D	5-E	5	5	5	5	5	6	6	6	6	6	6
2.50	1-A	3-B	3-C	4-D	5-E	5	5	5	5	5	6	6	6	6	6	6
3.08	1-A	3-B	4-D	5-D	5	5	5	5	5	5	6	6	6	6	6	6
3.67	1-A	3-B	4-D	5-D	5	5	5	5	5	5	6	6	6	6	6	6
4.00	1-A	3-B	4-D	5-D	5	5	5	5	5	5	6	6	6	6	6	6
4.50	2-A	3-C	4-D	5-F	5	5	5	5	5	6	6	6	6	6	6	6
5.00	2-A	3-C	4-D	5-F	5	5	5	5	5	6	6	6	6	6	6	6

Type	Steel Beam Size
1	W36X231 - Weak Axis Support
2	W36X247 - Weak Axis Support
3	W36X330 - Weak Axis Support
4	W36X385 - Weak Axis Support
5	(2)W36X135 - Strong Axis Support
6	(2)W36X231 - Strong Axis Support

Type	Concrete Beam Width	Beam Depth
A	52	18
B	52	20
C	52	24
D	52	30
E	52	36

NATIONAL GRID NOTES

1. THE CONTRACTOR SHALL OBSERVE AND ABIDE BY THE APPLICABLE POWER LINE SAFETY REGULATIONS 29 C.F.R. § 1926.1406 – 1926.1411.
2. THE CONTRACTOR SHALL TRAIN EMPLOYEES WORKING AS DEDICATED SPOTTERS IN ACCORDANCE WITH 29 C.F.R. § 1926.1408(G)(2).
3. CONSTRUCTION UNDER TRANSMISSION LINES REQUIRES A DEDICATED SPOTTER, AS APPLICABLE.
4. THE CONTRACTOR SHALL SUBMIT QUALIFIED INDIVIDUALS' RESUMES TO NATIONAL GRID.

TYPICAL TRENCH
– SH

Segment 10 (Package 6) CI Crossing and Road Use and Crossing Agreement (RUA) Status Details

Utility Owner	Utility Type (Quantity)	Agreement Status/Date	CI Notes	RUA Notes
CHG&E	Overhead Electric (121) Underground Electric (6) Underground Gas (28) Underground Electric (6)	Weekly meetings, comments on location and crossings. Comments on this segment received during and following two in-person working meetings and weekly ongoing virtual meetings conducted since early November 2022.	<p>9/22/22 sent CI Owner packages 6 and 7A, asked for feedback.</p> <p>10/14/22 set up FTP site to share information with CI Owner.</p> <p>11/7/22 first in-person working meeting with CI Owner and CHPE teams, held at CI Owner's offices. Discussed CI owner concerns, separation distances, potential areas needing additional engineering, progress tracking.</p> <p>11/14/22 began holding weekly call with CI Owner to work through areas needing additional engineering and address CI Owner concerns.</p> <p>2/9/23 sent updated CI Owner packages for Packages 6 and 7A.</p> <p>2/9/23 second in-person working meeting with CI Owner and CHPE teams, held at CI Owner's offices. Discussed CI owner concerns, separation distances, potential areas needing additional engineering, progress tracking.</p> <p>2/17/23 submitted Potential Effects of Underground DC Cables on Co-Located infrastructure (CHG&E) to CI Owner for review and comment. CI Owner currently procuring outside support to complete the review.</p> <p>Continuing to engage with CI Owner once per week and more frequently, as needed.</p>	NA

			<p>Conditional agreement reached with CI Owner on 29 of 127 electric interactions and three of 28 gas interactions.</p> <p>9/5/23 CHPE consulted with CI Owner, who is reaching out to their third-party consultant regarding status of electrical impacts study review. 9/6/23 CI Owner received comments from third party consultant and are reviewing them. CHPE to set up meeting when CI Owner finishes review.</p> <p>Concurrence expected after comments are received on the study, and CHPE has addressed comments and finalized alignment.</p>	
Enterprise Products	Underground Gas (1)	CHPE to provide final custom format plans for CI Owner review and sign off.	<p>9/22/22 sent CI Owner packages 6 and 7A, asked for feedback.</p> <p>10/10/22 checked in with CI Owner for comments. CI Owner provided instructions regarding land encroachment application process.</p> <p>11/8/22 submitted land encroachment application to CI Owner.</p> <p>11/9/22 spoke with CI Owner encroachment team about their encroachment application process.</p> <p>4/5/23 through 8/14/23 Regular check ins between CI Owner and CHPE to let CI Owner know the affected area is continuing to be finetuned; and an IFC CI Owner package, to be used in the CI Owner</p>	NA

			encroachment review process, will be provided when available.	
Iroquois Gas Transmission	Underground Gas (1)	CHPE to provide final custom format plans for CI Owner review and sign off.	<p>9/22/22 sent CI Owner packages 6 and 7A, asked for feedback.</p> <p>10/11/22 received comments from CI Owner including characteristics of their utility, and crossing requirements.</p> <p>2/20/23 contacted CI owner to request as-built information at one location in Package 6, under CSX railroad.</p> <p>3/6/23 following execution of an NDA with CI Owner, received requested as-built information.</p> <p>CHPE to provide IFC CI Owner package when available.</p>	NA
LaFarge	Overhead Conveyor (1)	Documentation showing agreement is in place 10/15/22.	<p>9/23/22 sent CI Owner package, asked for feedback.</p> <p>10/10/22 sent inquiry regarding whether CI Owner has comments on the CI Owner package.</p> <p>10/15/22 CI Owner confirmed they have no comments.</p> <p>CHPE to provide IFC CI Owner package when available.</p>	NA
MCI/Verizon Business Group	Underground Fiber (16)	CI Owner unresponsive until 4/11/23. CHPE to provide final custom format plans for CI Owner review and sign off.	<p>9/22/22 sent CI Owner package, asked for feedback.</p> <p>11/2/22 sent updated CI Owner package, asked for feedback.</p> <p>2/10/23 re-sent link to CI Owner package, asked for feedback.</p>	NA

			<p>3/28/23 re-sent link to CI Owner package, asked for feedback.</p> <p>4/11/23 spoke with CI owner, learned previous contact no longer is an employee. Provided project schedule, requested/received as-built drawings.</p> <p>9/12/23 CI Owner provided as built drawings to be used in design of the CHPE alignment.</p> <p>CHPE to provide IFC CI Owner package when available.</p>	
National Grid	Overhead Electric Distribution (6) Overhead Electric Transmission (5) Underground Gas (2)	Biweekly meetings, comments on location and crossings. Comments on this segment received in March. Kiewit to provide updated CI Owner package for NG review.	<p>12/19/22 submitted Packages 3, 4B, and 6.</p> <p>2/27/23 submitted updated Packages 3, 4B and 6</p> <p>3/1/23 NG submitted utility crossing discrepancies for Packages 3, 4B, and 6.</p> <p>CHPE to provide updated CI Owner Package to CI Owner.</p>	NA
New Athens Generating Co.	Telephone/electric/water. Details to be provided in Final CI Owner package drawing set	CHPE to provide final custom format plans for CI Owner review and sign off.	<p>10/17/22 spoke with CI Owner to give update on Project and ask for record drawings.</p> <p>10/21/22 drawing set of area around CI Owner facility.</p> <p>10/25/22 formally requested record drawings from CI Owner, in accord with their instructions.</p> <p>11/8/22 received record drawings from CI Owner, for use in CHPE design.</p>	NA
State Telephone Company	Underground Telephone (14) Overhead Telephone (1)	CHPE to provide final custom format plans for CI Owner review and sign off.	9/22/22 sent CI Owner package, asked for feedback.	NA

			<p>10/14/22 responded to inquiry from CI Owner confirming feedback CHPE is looking for.</p> <p>4/27/23 checked in with CI owner to let them know updated CI Owner package anticipated soon.</p> <p>CHPE to provide updated CI Owner Package to CI Owner.</p>	
Windstream (Dominion Telecom, Telergy)	Underground Fiber (3)	CHPE to provide final custom format plans for CI Owner review and sign off.	<p>9/27/22 sent CI Owner package, asked for feedback.</p> <p>10/10/22 sent message to CI Owner, requesting comments, and providing consolidated list of links (Packages 3, 5A, 6 for Dominion, Elantic, Telergy)</p> <p>10/28/22 sent inquiry regarding whether CI Owner has comments.</p> <p>3/22/23 sent updated CI Owner package links. CI Owner confirmed that they would review.</p> <p>4/4/23 checked in with CI Owner, who stated that to complete the review they will need clearer drawings.</p> <p>Clearer IFC CI Owner final custom format package to be provided for review.</p>	NA
Town of Bethlehem	Water Line (1)	<p>Agreement in place (RUA)</p> <p>CHPE to provide final custom format plans for CI Owner's information.</p>	9/22/22 sent CI Owner package, asked for feedback.	<p>RUA: Closed (3/23/2022)</p> <p>Separate CI Agreement: Open</p>
Village of Athens	Storm Drainage Pipe/Culvert (2)	CHPE to provide final custom format plans for CI Owner's information.	9/26/22 sent CI Owner package.	<p>RUA: N/A</p> <p>Need for CI Agreement TBD.</p>
Village of Coxsackie	<p>Storm Drainage Pipe/Culvert (3)</p> <p>Water Line (3)</p> <p>Storm Sewer (3)</p>	In negotiation with Village regarding RUA.	9/22/22 sent CI Owner package, asked for feedback.	RUA: Open (TBD)

		CHPE to provide final custom format plans for CI Owner's information.	9/23/22 replied to CI Owner's package receipt acknowledgement. 8/22/23 CHPE met with mayor, DPW, water dept. – village is agreeable to redesign.	Separate CI Agreement: Open (TBD)
Village of Ravena	Storm Drainage Pipe/Culvert (5) Water Line (1) Storm Sewer (3) Sanitary Sewer (3)	In negotiation with Village regarding RUA. CHPE to provide final custom format plans for CI Owner review and sign off.	9/22/22 sent CI Owner package, asked for feedback. 9/12/23 CHPE to follow up with DPW Foreman.	RUA: Open (TBD) Separate CI Agreement: Open (TBD)

CI = collocated infrastructure

NA = not applicable

RUA = Road Use and Crossing Agreement

TBD = to be determined

Cole, Benjamin

From: Cole, Benjamin
Sent: Friday, September 23, 2022 5:26 PM
To: Borchert, John
Cc: Dimisko, Brian
Subject: RE: CHPE Collocated Infrastructure Details_EM&CP 6 and 7A CHG&E

Great. Thank you John.

Brian please don't hesitate to reach out with comments.

Thanks,

Ben Cole

ben.cole@wsp.com

From: Borchert, John <JBorchert@cenhud.com>
Sent: Friday, September 23, 2022 5:18 PM
To: Cole, Benjamin <Ben.Cole@wsp.com>
Cc: Dimisko, Brian <BDimisko@cenhud.com>
Subject: Re: CHPE Collocated Infrastructure Details_EM&CP 6 and 7A CHG&E

Ben,

I forwarded your email to Brian Dimisko to share to our team and begin the review process.

John Borchert

Sent from my iPhone

On Sep 22, 2022, at 10:07 PM, Cole, Benjamin <Ben.Cole@wsp.com> wrote:

CAUTION!!! This Message Is From an External Sender.

STOP and verify sender email address, LOOK closely at the content, DON'T click on any unknown attachments or links and REPORT anything suspicious.

***** WARNING - EXTERNAL EMAIL *** USE CAUTION BEFORE
OPENING LINKS/ATTACHMENTS *** NEVER SUPPLY
USERID/PASSWORD INFORMATION *****

Good Evening John,

Please note that as discussed during recent communications, we still plan to stand up a file transfer page to provide additional information to CHG&E moving forward. Because that has not yet happened, and in the interest of expediency, at the links below please find design drawings of the proposed CHPE alignment where it involves your infrastructure within the Segment 6 Environmental Management and Construction Plan ("EM&CP") Packages 6 and 7A.

Link: [Package 6 CHG&E Co-Located Infrastructure 2022-09-14.pdf \[wsp-chpe-api.azurewebsites.net\]](#)

Link: [Package 7A Central Hudson Gas & Electric Co-Located Infrastructure 2022-09-15.pdf \[wsp-chpe-api.azurewebsites.net\]](#)

TDI will be submitting these plans to the New York State Public Service Commission ("PSC") for portions of the Project in the Towns of Coeymans, New Baltimore, Coxsackie, Athens, and Catskill. This information is a follow-up to previous communications to you providing general project information and typical infrastructure crossing drawings.

Please review the linked information regarding the CHPE alignment relating to your infrastructure and provide concurrence with the Project's cable separation and alignment and any feedback to me at ben.cole@wsp.com. It is important to TDI that the construction and operation of the CHPE project does not interfere with the continued operation of your infrastructure.

To the extent that the CHPE alignment interacts with your infrastructure within future Segment EM&CP submissions, we will provide you with similar drawings in advance of those filings. I look forward to coordinating with you as we finalize the design of the CHPE project.

Sincerely,

Ben Cole

WSP USA, on behalf of TDI



ben.cole@wsp.com

NOTICE: This communication and any attachments ("this message") may contain information which is privileged, confidential, proprietary or otherwise subject to restricted disclosure under applicable law. This message is for the sole use of the intended recipient(s). Any unauthorized use, disclosure, viewing, copying, alteration, dissemination or distribution of, or reliance on, this message is strictly prohibited. If you have received this message in error, or you are not an authorized or intended recipient, please notify the sender immediately by replying to this message, delete this message and all copies from your e-mail system and destroy any printed copies.

-LAEmHhHzdJzBITWfa4Hgs7pbKl

Cole, Benjamin

From: Cole, Benjamin
Sent: Wednesday, February 8, 2023 10:17 AM
To: 'Dimisko, Brian'
Cc: Rick Chase
Subject: RE: CHPE Package 7A Plan/Profile/Utility Matrix

Hi Brian,

Plans/Profiles for both Package 6 and 7A are now in the following folder and ready for download: [Packages 6 and 7A Plan and Profile](#)

Thanks,

Ben Cole


ben.cole@wsp.com

From: Cole, Benjamin
Sent: Thursday, February 2, 2023 10:43 AM
To: Dimisko, Brian <BDimisko@cenhud.com>
Cc: Rick Chase <rick.chase@transmissiondevelopers.com>
Subject: CHPE Package 7A Plan/Profile/Utility Matrix

Good Morning Brian,

At the link please find the updated draft final plan/profile/utility matrix for Package 7A: [Package 7A Plan and Profile](#)

Kiewit had the following comment about the level of design: Package 6 and 7A sets will both be complete deliverables for the “Draft Final” design milestone on the CHPE Project. Although the term “Draft” is included, the intent of this stage prior to “Final” is to prepare the permitting documents for submittal to DPS. Because of this, we believe the drawing sets should be considered ‘final design’ as it relates to the interaction of the conduit alignment with CHG&E electric and gas assets.

We’ll transmit Package 6 as soon as available.

Thanks,

Ben Cole


ben.cole@wsp.com

Cole, Benjamin

From: Cole, Benjamin
Sent: Friday, February 17, 2023 3:09 PM
To: Dimisko, Brian
Cc: Rick Chase
Subject: Electrical Effects Study

Hi Brian,

The potential electrical effects study is ready for CHGE review. Please find a copy at the following link: [Electrical Studies](#)

The utility interaction tracker is almost ready for uploading.

Thanks and Happy Friday!

Ben Cole


ben.cole@wsp.com

Cole, Benjamin

From: Grassi, Laura
Sent: Tuesday, November 8, 2022 9:58 AM
To: Land_Encroachments
Cc: Cole, Benjamin
Subject: RE: CHPE Collocated Infrastructure Details_EM&CP 6 Enterprise Products
Attachments: Enterprise encroachment app_11-7-22.pdf; Enbridge as-built req 11-7-22.pdf

Good Morning,

Please see the encroachment application and as-built requests, attached.

At the link below please find design drawings of the proposed CHPE alignment where it involves your infrastructure within the Segment 6 Environmental Management and Construction Plan ("EM&CP") Package 6.

Link: [Package 6 Enterprise Products Co-Located Infrastructure 2022-09-14.pdf](#)

Additional information and context is provided in the email chain below. Please reach out with any questions or comments.

Regards,
Laura

From: Land_Encroachments <Land_Encroachments@eprod.com>
Sent: Wednesday, October 12, 2022 3:22 PM
To: Cole, Benjamin <Ben.Cole@wsp.com>
Subject: RE: CHPE Collocated Infrastructure Details_EM&CP 6 Enterprise Products

Ben –

Please be advised that a new application process has been implemented for the Land Encroachment Group effective immediately. Please visit www.EnterpriseEncroachments.com and complete the encroachment application or asbuilt drawing request, depending on your needs **and resubmit your request**. Once the application request has been filled out and downloaded, submit your plans and request to www.land_encroachment@eprod.com.

For your use, the application instructions have been attached along with our guidelines and procedures. When your project has been logged, you will receive a database number confirming receipt of your inquiry.

Should you have questions, please do not hesitate to contact Land-Encroachment Group at 1-866-901-8170 or by email at Land_Encroachments@eprod.com and a Representative from our Team can assist you.

Thank you,
Land Encroachments

From: Cole, Benjamin <Ben.Cole@wsp.com>
Sent: Monday, October 10, 2022 3:33 PM

To: Eguia, Rebecca <reguia@eprod.com>

Subject: [EXTERNAL] RE: CHPE Collocated Infrastructure Details_EM&CP 6 Enterprise Products

[Use caution with links/attachments]

Good Afternoon,

I'm checking in to see if you have comments on the drawings provided at the link below.

Thank You,

Ben Cole

ben.cole@wsp.com

From: Cole, Benjamin

Sent: Thursday, September 22, 2022 9:39 PM

To: reguia@eprod.com

Subject: CHPE Collocated Infrastructure Details_EM&CP 6 Enterprise Products

Good Morning,

I'm writing on behalf of Transmission Developers Inc. ("TDI"), owner of the Champlain Hudson Power Express ("CHPE" or "Project") transmission line project. The purpose of this correspondence is to provide more detailed information related to how the CHPE project is designed to interact with your infrastructure and to solicit feedback from your company regarding the Project's alignment.

As you may recall from previous communications from Rick Chase at TDI, the CHPE is a fully permitted 339-mile underground and underwater high voltage direct current (HVDC) electric transmission line that will import up to 1,250 MW of renewable power from Canada and send it to the New York City metro area (see <https://chpexpress.com> for additional information).

At the link below please find design drawings of the proposed CHPE alignment where it involves your infrastructure within the Segment 6 Environmental Management and Construction Plan ("EM&CP") Package 6.

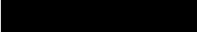
Link: [Package 6_Enterprise Products_Co-Located Infrastructure_2022-09-14.pdf](#)

TDI will be submitting these plans to the New York State Public Service Commission ("PSC") for portions of the Project in the Town of Coeymans. This information is a follow-up to previous communications to you providing general project information and typical infrastructure crossing drawings.

Please review the linked information regarding the CHPE alignment relating to your infrastructure and provide concurrence with the Project's cable separation and alignment and any feedback to me (ben.cole@wsp.com) by October 7, 2022. It is important to TDI that the construction and operation of the CHPE project does not interfere with the continued operation of your infrastructure.

To the extent that the CHPE alignment interacts with your infrastructure within future Segment EM&CP submissions, we will provide you with similar drawings in advance of those filings. I look forward to coordinating with you as we finalize the design of the CHPE project.

Sincerely,

Ben Cole
WSP USA, on behalf of TDI

ben.cole@wsp.com

NOTICE: This communication and any attachments ("this message") may contain information which is privileged, confidential, proprietary or otherwise subject to restricted disclosure under applicable law. This message is for the sole use of the intended recipient(s). Any unauthorized use, disclosure, viewing, copying, alteration, dissemination or distribution of, or reliance on, this message is strictly prohibited. If you have received this message in error, or you are not an authorized or intended recipient, please notify the sender immediately by replying to this message, delete this message and all copies from your e-mail system and destroy any printed copies.

-LAEmHhHzdJzBITWfa4Hgs7pbKl

This message (including any attachments) is confidential and intended for a specific individual and purpose. If you are not the intended recipient, please notify the sender immediately and delete this message.

Cole, Benjamin

From: Land_Encroachments <Land_Encroachments@eprod.com>
Sent: Tuesday, November 15, 2022 3:35 PM
To: Cole, Benjamin
Subject: RE: CHPE Collocated Infrastructure Details_EM&CP 6 Enterprise Products

Ben –

Regarding LONO Renewals, as long as the project has not changed, and all information is the same (plans/profiles), the land analyst can renew the LONO without a new submission.

If there happens to be any changes with the project, you would need to fully submit a new request for a LONO.

Correct, as of now it seems all information needed has been provided, if there should be additional information, a member of our engineering group will contact you.

Thank you,

Land Encroachments

From: Cole, Benjamin <Ben.Cole@wsp.com>
Sent: Wednesday, November 9, 2022 12:03 PM
To: Land_Encroachments <Land_Encroachments@eprod.com>
Cc: Grassi, Laura <Laura.Grassi@wsp.com>; Rick Chase <rick.chase@transmissiondevelopers.com>; Michael Main <michael.main@transmissiondevelopers.com>; Nolan Mazur <nolan.mazur@transmissiondevelopers.com>; Ayokunle Kafi <ayokunle.kafi@transmissiondevelopers.com>
Subject: [EXTERNAL] RE: CHPE Collocated Infrastructure Details_EM&CP 6 Enterprise Products

[Use caution with links/attachments]

Hi Art,

It was good to speak with you, and thank you for the information.

When a LONO expires, what is the process for renewal, and would such a renewal be faster than the original encroachment review?

As I understand, there is nothing more needed from CHPE currently. Please let me know if that's incorrect.

Thank You,

Ben Cole

ben.cole@wsp.com

From: Land_Encroachments <Land_Encroachments@eprod.com>
Sent: Wednesday, November 9, 2022 12:48 PM
To: Cole, Benjamin <Ben.Cole@wsp.com>

Cc: Grassi, Laura <Laura.Grassi@wsp.com>

Subject: RE: CHPE Collocated Infrastructure Details_EM&CP 6 Enterprise Products

Ben –

Your email and attachments have been saved to our project folder under **DB 19600**. Please refer to this database number when checking on the status or providing updated plans of your project to ensure a timely turn around.

With the upsurge of infrastructure related projects, we are experiencing a substantial increase of encroachment requests. At this time, a response to your requests is averaging 8-10 weeks once plans are received. We ask that you work with us while we address each request carefully, keeping in mind that a thorough review will ensure the integrity and safety of our pipelines and those working around the pipelines.

Upon completion of the encroachment review, a Letter of No Objection (LONO) or an Encroachment Agreement may be issued. Company's LONO will expire six (6) months from the date of issue of the letter.

Please be advised that our current turnaround time for as-built requests is approximately 6-8 weeks

If you have any questions, please do not hesitate to contact Land-Encroachment Group at 1-866-901-8170 or by email at Land_Encroachments@eprod.com and a Representative from our Team can assist you.

Thank you,
Land Encroachments
Enterprise Products Company

From: Grassi, Laura <Laura.Grassi@wsp.com>

Sent: Tuesday, November 8, 2022 8:58 AM

To: Land_Encroachments <Land_Encroachments@eprod.com>

Cc: Cole, Benjamin <Ben.Cole@wsp.com>

Subject: [EXTERNAL] RE: CHPE Collocated Infrastructure Details_EM&CP 6 Enterprise Products

[Use caution with links/attachments]

Good Morning,

Please see the encroachment application and as-built requests, attached.

At the link below please find design drawings of the proposed CHPE alignment where it involves your infrastructure within the Segment 6 Environmental Management and Construction Plan ("EM&CP") Package 6.

Link: [Package 6 Enterprise Products Co-Located Infrastructure 2022-09-14.pdf](#)

Additional information and context is provided in the email chain below. Please reach out with any questions or comments.

Regards,
Laura

From: Land_Encroachments <Land_Encroachments@eprod.com>

Sent: Wednesday, October 12, 2022 3:22 PM

To: Cole, Benjamin <Ben.Cole@wsp.com>

Subject: RE: CHPE Collocated Infrastructure Details_EM&CP 6 Enterprise Products

Ben –

Please be advised that a new application process has been implemented for the Land Encroachment Group effective immediately. Please visit www.EnterpriseEncroachments.com and complete the encroachment application or asbuilt drawing request, depending on your needs **and resubmit your request**. Once the application request has been filled out and downloaded, submit your plans and request to www.land_encroachment@eprod.com.

For your use, the application instructions have been attached along with our guidelines and procedures. When your project has been logged, you will receive a database number confirming receipt of your inquiry.

Should you have questions, please do not hesitate to contact Land-Encroachment Group at 1-866-901-8170 or by email at Land_Encroachments@eprod.com and a Representative from our Team can assist you.

Thank you,
Land Encroachments

From: Cole, Benjamin <Ben.Cole@wsp.com>

Sent: Monday, October 10, 2022 3:33 PM

To: Eguia, Rebecca <reguia@eprod.com>

Subject: [EXTERNAL] RE: CHPE Collocated Infrastructure Details_EM&CP 6 Enterprise Products

[Use caution with links/attachments]

Good Afternoon,

I'm checking in to see if you have comments on the drawings provided at the link below.

Thank You,

Ben Cole


ben.cole@wsp.com

From: Cole, Benjamin

Sent: Thursday, September 22, 2022 9:39 PM

To: reguia@eprod.com

Subject: CHPE Collocated Infrastructure Details_EM&CP 6 Enterprise Products

Good Morning,

I'm writing on behalf of Transmission Developers Inc. ("TDI"), owner of the Champlain Hudson Power Express ("CHPE" or "Project") transmission line project. The purpose of this correspondence is to provide more detailed information related to how the CHPE project is designed to interact with your infrastructure and to solicit feedback from your company regarding the Project's alignment.

As you may recall from previous communications from Rick Chase at TDI, the CHPE is a fully permitted 339-mile underground and underwater high voltage direct current (HVDC) electric transmission line that will import up to 1,250

MW of renewable power from Canada and send it to the New York City metro area (see <https://chpexpress.com> for additional information).

At the link below please find design drawings of the proposed CHPE alignment where it involves your infrastructure within the Segment 6 Environmental Management and Construction Plan ("EM&CP") Package 6.

Link: [Package 6 Enterprise Products Co-Located Infrastructure 2022-09-14.pdf](#)

TDI will be submitting these plans to the New York State Public Service Commission ("PSC") for portions of the Project in the Town of Coeymans. This information is a follow-up to previous communications to you providing general project information and typical infrastructure crossing drawings.

Please review the linked information regarding the CHPE alignment relating to your infrastructure and provide concurrence with the Project's cable separation and alignment and any feedback to me (ben.cole@wsp.com) by October 7, 2022. It is important to TDI that the construction and operation of the CHPE project does not interfere with the continued operation of your infrastructure.

To the extent that the CHPE alignment interacts with your infrastructure within future Segment EM&CP submissions, we will provide you with similar drawings in advance of those filings. I look forward to coordinating with you as we finalize the design of the CHPE project.

Sincerely,

Ben Cole
WSP USA, on behalf of TDI

ben.cole@wsp.com

NOTICE: This communication and any attachments ("this message") may contain information which is privileged, confidential, proprietary or otherwise subject to restricted disclosure under applicable law. This message is for the sole use of the intended recipient(s). Any unauthorized use, disclosure, viewing, copying, alteration, dissemination or distribution of, or reliance on, this message is strictly prohibited. If you have received this message in error, or you are not an authorized or intended recipient, please notify the sender immediately by replying to this message, delete this message and all copies from your e-mail system and destroy any printed copies.

-LAEmHhHzdJzBITWfa4Hgs7pbKl

This message (including any attachments) is confidential and intended for a specific individual and purpose. If you are not the intended recipient, please notify the sender immediately and delete this message.

Cole, Benjamin

From: Farrag, Nour <NFarrag@eprod.com>
Sent: Monday, August 14, 2023 3:33 PM
To: Cole, Benjamin; Charles, Tyler
Cc: Saenz, Alfredo; Grassi, Laura; John London
Subject: RE: DB 19600 - Transmission Developers Inc - Champlain Hudson Power Express - Updated Plans

Follow Up Flag: Follow up
Flag Status: Flagged

Ben,

Once the updated design plans are completed, please resubmit the application with the updated let date and related plans and drawings to land_encroachments@eprod.com, referring to **DB 19600**. We will try our best to expedite the review once we receive the plans. However, at this point, this application will need to be closed until we receive additional information since we have nothing to do on our end.

Thank you,



Nour Farrag, P.E.

Senior Encroachment Engineer
Enterprise Products

Email nfarrag@eprod.com

From: Cole, Benjamin <Ben.Cole@wsp.com>
Sent: Wednesday, August 9, 2023 3:34 PM
To: Charles, Tyler <tyler.charles@nses.com>
Cc: Saenz, Alfredo <alfredo.saenz@nses.com>; Grassi, Laura <Laura.Grassi@wsp.com>; John London <John.London@transmissiondevelopers.com>; Farrag, Nour <NFarrag@eprod.com>
Subject: [EXTERNAL] RE: DB 19600 - Transmission Developers Inc - Champlain Hudson Power Express - Updated Plans

[Use caution with links/attachments]

Thank you Tyler, for the details.

As briefly discussed on the phone, anything we can do to rush/expedite the review would be appreciated, as I am sure the planned construction date will be less than the 6 month window by the time the final drawings are available.

Just giving a heads up at this point that the question will be coming..

Thanks,

Ben Cole

ben.cole@wsp.com

Out of office 9/12/23 through 9/18/23

From: Charles, Tyler <tyler.charles@nses.com>
Sent: Wednesday, August 9, 2023 4:05 PM
To: Cole, Benjamin <Ben.Cole@wsp.com>
Cc: Saenz, Alfredo <alfredo.saenz@nses.com>; Grassi, Laura <Laura.Grassi@wsp.com>; John London <John.London@transmissiondevelopers.com>; Farrag, Nour <NFarrag@eprod.com>
Subject: RE: DB 19600 - Transmission Developers Inc - Champlain Hudson Power Express - Updated Plans

Good Afternoon Ben,

As per our discussion, since this project has been on hold since April awaiting survey data, I will go ahead and close out this application. When this project is ready to be reviewed with all the updated information, please resubmit your application and related plans and drawings to land_encroachments@eprod.com approximately 6 months prior to construction, referring to **DB 19600**, so it can be reopened and evaluated. Please allow for at least 60 days for the evaluation and LONO issuance to be completed. Please keep in mind a LONO expires 6 months from the date of issue.

Please let me know if you have any additional questions.

Thank you,
Tyler

Tyler Charles
Engineer

NorthStar Energy Services, Inc.



tyler.charles@nses.com



The information contained in this electronic message and any attachments to this message are intended for the exclusive use of the addressee(s) and may contain confidential or privileged information. If you are not the intended recipient, please destroy all copies of this message and any attachments.

From: Cole, Benjamin <Ben.Cole@wsp.com>
Sent: Wednesday, August 9, 2023 11:48 AM
To: Charles, Tyler <tyler.charles@nses.com>
Cc: Saenz, Alfredo <alfredo.saenz@nses.com>; Silva, Israel <SILVA@eprod.com>; Grassi, Laura <Laura.Grassi@wsp.com>; John London <John.London@transmissiondevelopers.com>
Subject: RE: DB 19600 - Transmission Developers Inc - Champlain Hudson Power Express - Updated Plans

[EXTERNAL]

Hi Tyler,

Just checking in because it's been a while. The Enterprise line is in the CHPE design package area (Package 6) that is taking the longest, for unrelated reasons (e.g. surveys). An update I heard today was along the lines of a few more weeks before that work is done. The drawing set that we send to you would be shortly after that, FYI.

Thanks,

Ben Cole

ben.cole@wsp.com

Out of office 9/12/23 through 9/18/23

From: Charles, Tyler <tyler.charles@nses.com>

Sent: Friday, June 16, 2023 12:34 PM

To: Cole, Benjamin <Ben.Cole@wsp.com>

Cc: Saenz, Alfredo <alfredo.saenz@nses.com>; Silva, Israel <ISILVA@eprod.com>; Grassi, Laura <Laura.Grassi@wsp.com>

Subject: RE: DB 19600 - Transmission Developers Inc - Champlain Hudson Power Express - Updated Plans

Thank you for the update Ben. Understood and will continue to periodically check in.

Thanks again,
Tyler

Tyler Charles
Engineer

NorthStar Energy Services, Inc.

tyler.charles@nses.com



The information contained in this electronic message and any attachments to this message are intended for the exclusive use of the addressee(s) and may contain confidential or privileged information. If you are not the intended recipient, please destroy all copies of this message and any attachments.

From: Cole, Benjamin <Ben.Cole@wsp.com>

Sent: Friday, June 16, 2023 11:09 AM

To: Charles, Tyler <tyler.charles@nses.com>

Cc: Saenz, Alfredo <alfredo.saenz@nses.com>; Silva, Israel <ISILVA@eprod.com>; Grassi, Laura <Laura.Grassi@wsp.com>

Subject: RE: DB 19600 - Transmission Developers Inc - Champlain Hudson Power Express - Updated Plans

[EXTERNAL]

Hi Tyler,

No updates yet. Thanks again for checking. Lots of moving pieces being worked through on portions of the project that are closer to construction.

Thanks,

Ben Cole

ben.cole@wsp.com

From: Charles, Tyler <tyler.charles@nses.com>

Sent: Thursday, June 15, 2023 3:47 PM

To: Cole, Benjamin <Ben.Cole@wsp.com>

Cc: Saenz, Alfredo <alfredo.saenz@nses.com>; Silva, Israel <ISILVA@eprod.com>; Grassi, Laura <Laura.Grassi@wsp.com>

Subject: RE: DB 19600 - Transmission Developers Inc - Champlain Hudson Power Express - Updated Plans

Good Afternoon Ben,

Checking in again to see if there are any updates on this project?

Thank you,
Tyler

Tyler Charles
Engineer

NorthStar Energy Services, Inc.

tyler.charles@nses.com



The information contained in this electronic message and any attachments to this message are intended for the exclusive use of the addressee(s) and may contain confidential or privileged information. If you are not the intended recipient, please destroy all copies of this message and any attachments.

From: Charles, Tyler

Sent: Monday, May 22, 2023 9:28 AM

To: Cole, Benjamin <Ben.Cole@wsp.com>

Cc: Saenz, Alfredo <alfredo.saenz@nses.com>; Silva, Israel <ISILVA@eprod.com>; Grassi, Laura <Laura.Grassi@wsp.com>

Subject: RE: DB 19600 - Transmission Developers Inc - Champlain Hudson Power Express - Updated Plans

Ben,

Received and thank you for the information. Please let me know whenever you have any other updates and I will continue to check in.

Thanks again,
Tyler

Tyler Charles
Engineer

NorthStar Energy Services, Inc.

tyler.charles@nses.com



The information contained in this electronic message and any attachments to this message are intended for the exclusive use of the addressee(s) and may contain confidential or privileged information. If you are not the intended recipient, please destroy all copies of this message and any attachments.

From: Cole, Benjamin <Ben.Cole@wsp.com>
Sent: Monday, May 22, 2023 8:48 AM
To: Charles, Tyler <tyler.charles@nses.com>
Cc: Saenz, Alfredo <alfredo.saenz@nses.com>; Silva, Israel <ISILVA@eprod.com>; Grassi, Laura <Laura.Grassi@wsp.com>
Subject: RE: DB 19600 - Transmission Developers Inc - Champlain Hudson Power Express - Updated Plans

[EXTERNAL]

Hi Tyler, they're still not ready. Thanks for checking. I'm told the delay is due to a survey issue on the overall CHPE Package 6 alignment that is being resolved.

Ben Cole

ben.cole@wsp.com

From: Charles, Tyler <tyler.charles@nses.com>
Sent: Friday, May 19, 2023 5:32 PM
To: Cole, Benjamin <Ben.Cole@wsp.com>
Cc: Saenz, Alfredo <alfredo.saenz@nses.com>; Silva, Israel <ISILVA@eprod.com>; Grassi, Laura <Laura.Grassi@wsp.com>
Subject: RE: DB 19600 - Transmission Developers Inc - Champlain Hudson Power Express - Updated Plans

Good Afternoon Ben,

Checking in again on the status of this drawing package? Thanks for continued update responses.

Tyler

Tyler Charles
Engineer

NorthStar Energy Services, Inc.

[REDACTED]
tyler.charles@nses.com



The information contained in this electronic message and any attachments to this message are intended for the exclusive use of the addressee(s) and may contain confidential or privileged information. If you are not the intended recipient, please destroy all copies of this message and any attachments.

From: Cole, Benjamin <Ben.Cole@wsp.com>

Sent: Sunday, May 7, 2023 1:46 PM

To: Charles, Tyler <tyler.charles@nses.com>

Cc: Saenz, Alfredo <alfredo.saenz@nses.com>; Silva, Israel <ISILVA@eprod.com>; Grassi, Laura <Laura.Grassi@wsp.com>

Subject: RE: DB 19600 - Transmission Developers Inc - Champlain Hudson Power Express - Updated Plans

[EXTERNAL]

Hi Tyler,

Thanks again for checking. I have to give about the same answer unfortunately. It's not available yet, and I expect it will be in the next week or two (I know I said the same last that you checked...). There are a lot of moving pieces and ongoing tasks currently, causing the delay.

We'll send when ready but don't hesitate to check again..

Thanks,

Ben Cole

[REDACTED]
ben.cole@wsp.com

From: Charles, Tyler <tyler.charles@nses.com>

Sent: Friday, May 5, 2023 5:28 PM

To: Cole, Benjamin <Ben.Cole@wsp.com>

Cc: Saenz, Alfredo <alfredo.saenz@nses.com>; Silva, Israel <ISILVA@eprod.com>; Grassi, Laura <Laura.Grassi@wsp.com>

Subject: RE: DB 19600 - Transmission Developers Inc - Champlain Hudson Power Express - Updated Plans

Good Afternoon Ben,

I am reaching out to see if this updated package is available now?

Thanks,

Tyler

Tyler Charles

Engineer

NorthStar Energy Services, Inc.



tyler.charles@nses.com



The information contained in this electronic message and any attachments to this message are intended for the exclusive use of the addressee(s) and may contain confidential or privileged information. If you are not the intended recipient, please destroy all copies of this message and any attachments.

From: Cole, Benjamin <Ben.Cole@wsp.com>
Sent: Thursday, April 20, 2023 7:29 AM
To: Charles, Tyler <tyler.charles@nses.com>
Cc: Saenz, Alfredo <alfredo.saenz@nses.com>; Silva, Israel <SILVA@eprod.com>; Grassi, Laura <Laura.Grassi@wsp.com>
Subject: RE: DB 19600 - Transmission Developers Inc - Champlain Hudson Power Express - Updated Plans

[EXTERNAL]

Hi Tyler, thanks again for checking in.

We're still waiting for the updated CHPE Design Package 6. Expecting to see that in the next week or two.

Thanks,

Ben Cole



ben.cole@wsp.com

From: Charles, Tyler <tyler.charles@nses.com>
Sent: Wednesday, April 19, 2023 1:52 PM
To: Cole, Benjamin <Ben.Cole@wsp.com>
Cc: Saenz, Alfredo <alfredo.saenz@nses.com>; Silva, Israel <SILVA@eprod.com>; Grassi, Laura <Laura.Grassi@wsp.com>
Subject: RE: DB 19600 - Transmission Developers Inc - Champlain Hudson Power Express - Updated Plans

Good Afternoon Ben,

I wanted to check in with you and see if this updated package is available?

Thanks,
Tyler

Tyler Charles
Engineer

NorthStar Energy Services, Inc.

tyler.charles@nses.com



The information contained in this electronic message and any attachments to this message are intended for the exclusive use of the addressee(s) and may contain confidential or privileged information. If you are not the intended recipient, please destroy all copies of this message and any attachments.

From: Charles, Tyler

Sent: Wednesday, April 5, 2023 2:14 PM

To: Cole, Benjamin <Ben.Cole@wsp.com>

Cc: Saenz, Alfredo <alfredo.saenz@nses.com>; Silva, Israel <ISILVA@eprod.com>; Grassi, Laura <Laura.Grassi@wsp.com>

Subject: RE: DB 19600 - Transmission Developers Inc - Champlain Hudson Power Express - Updated Plans

Ben,
Received and thanks for the update. I will keep an eye out for those.

Tyler

Tyler Charles
Engineer

NorthStar Energy Services, Inc.

tyler.charles@nses.com



The information contained in this electronic message and any attachments to this message are intended for the exclusive use of the addressee(s) and may contain confidential or privileged information. If you are not the intended recipient, please destroy all copies of this message and any attachments.

From: Cole, Benjamin <Ben.Cole@wsp.com>

Sent: Wednesday, April 5, 2023 1:55 PM

To: Charles, Tyler <tyler.charles@nses.com>

Cc: Saenz, Alfredo <alfredo.saenz@nses.com>; Silva, Israel <ISILVA@eprod.com>; Grassi, Laura <Laura.Grassi@wsp.com>

Subject: RE: DB 19600 - Transmission Developers Inc - Champlain Hudson Power Express - Updated Plans

[EXTERNAL]

Thanks Tyler - I appreciate the outreach.

Just confirmed that the CHPE Package 6 update is not yet available and the one you have is still the most current. I'm expecting to see updated Package 6 in the next week (or two at most I hope). I'll forward as soon as available and am noting this for back checking. Understood you need that info to complete the review.

Thank You,

Ben Cole

ben.cole@wsp.com

From: Charles, Tyler <tyler.charles@nses.com>

Sent: Wednesday, April 5, 2023 2:36 PM

To: Cole, Benjamin <Ben.Cole@wsp.com>

Cc: Saenz, Alfredo <alfredo.saenz@nses.com>; Silva, Israel <ISILVA@eprod.com>

Subject: DB 19600 - Transmission Developers Inc - Champlain Hudson Power Express - Updated Plans

Good Afternoon Ben,

As discussed, we are working on reviewing the plans associated with the Enterprise encroachment request DB 19600 – Transmission Developers Inc – Champlain Hudson Power Express.

Could you please share the updated drawing package for Segment 10 (Package 6)?

We are looking to see the updated pipeline elevation per Operations potholing for the Enterprise Pipeline shown on sheet [REDACTED]. The approximate alignment station for this is [REDACTED].

Please let me know if there are any issues.

Thanks,
Tyler

Tyler Charles
Engineer

NorthStar Energy Services, Inc.

tyler.charles@nses.com



The information contained in this electronic message and any attachments to this message are intended for the exclusive use of the addressee(s) and may contain confidential or privileged information. If you are not the intended recipient, please destroy all copies of this message and any attachments.

NOTICE: This communication and any attachments ("this message") may contain information which is privileged, confidential, proprietary or otherwise subject to restricted disclosure under applicable law. This message is for the sole use of the intended recipient(s). Any unauthorized use, disclosure, viewing, copying, alteration, dissemination or distribution of, or reliance on, this message is strictly prohibited. If you have received this message in error, or you are not an authorized or intended recipient, please notify the sender immediately by replying to this message, delete this message and all copies from your e-mail system and destroy any printed copies.

-LAEmHhHzdJzBITWfa4Hgs7pbKl

This message (including any attachments) is confidential and intended for a specific individual and purpose. If you are not the intended recipient, please notify the sender immediately and delete this message.

Cole, Benjamin

From: Spencer Robinson <spencer_robinson@iroquois.com>
Sent: Monday, March 6, 2023 1:46 PM
To: Cole, Benjamin; Kimberly Pritchard
Cc: Paul Amato; Michael J. Kinik; Beata Orson; Glenn Mastmann
Subject: RE: CHPE Collocated Infrastructure Details_EM&CP 6_Iroquois
Attachments: RRX-100-1-17+04.03_REV 2.pdf

Thank You Ben,

The Iroquois Gas pipeline around your proposed crossing is a [REDACTED]

[REDACTED] I have a 32 year old drawing showing the plan and profile of this crossing but Iroquois would require a test pit as things change over the years, I believe this old drawing only shows the one set of tracks and I believe there is at least one more set there now.

The pipeline, [REDACTED] installed by digging the trench, the pipe then installed and backfilled. Other than a tally of the length of the pipe, there was no vertical data recorded as the pipeline was installed. At the time of construction, (winter of 1991/1992) the minimum depth of burial was about [REDACTED]

[REDACTED] this will need to be verified prior to your crossing activity. Iroquois Gas has a 50 foot wide ROW that extends 20 foot north and 30 foot south of the buried pipeline. I am looking at the most recent CHPE plan I have, last revised 2/3/2023, it appears that the crossing is proposed to be on lands of Central Hudson and off the Railroad. If memory serves, it is a low, wet area. Your field staff can plan to conduct a test pit over the pipeline to obtain horizontal and vertical alignment. Iroquois field technicians will be available for this test pit work by submitting a dig ticket through the 811 system. There shall be no work over or on the Iroquois gas pipeline or ROW without prior arrangement with Iroquois field staff.

Thank You
Spencer

Looking at the most recent **From:** Cole, Benjamin <Ben.Cole@wsp.com>

Sent: Monday, March 6, 2023 12:57 PM

To: Spencer Robinson <spencer_robinson@iroquois.com>; Kimberly Pritchard <Kimberly_Pritchard@iroquois.com>

Cc: Paul Amato <Paul_Amato@iroquois.com>; Michael J. Kinik <Michael_Kinik@iroquois.com>; Beata Orson <beata_orson@iroquois.com>

Subject: RE: CHPE Collocated Infrastructure Details_EM&CP 6_Iroquois

[External email: Use caution with links and attachments]

Hi Spencer, Kim, All,

Please find attached executed agreement.

Thanks,

Ben Cole

[REDACTED]
ben.cole@wsp.com

From: Spencer Robinson <spencer_robinson@iroquois.com>
Sent: Tuesday, February 28, 2023 11:33 AM
To: Cole, Benjamin <Ben.Cole@wsp.com>; Kimberly Pritchard <Kimberly_Pritchard@iroquois.com>
Cc: Paul Amato <Paul_Amato@iroquois.com>; Michael J. Kinik <Michael_Kinik@iroquois.com>; Beata Orson <beata_orson@iroquois.com>
Subject: RE: CHPE Collocated Infrastructure Details_EM&CP 6_Iroquois

Excellent! Ben, once we have this executed , I can provide more data on the pipeline, I expect that I (Iroquois) will need a bit more detail on your plans for the crossing as well.

Thanks
Spencer

From: Cole, Benjamin <Ben.Cole@wsp.com>
Sent: Tuesday, February 28, 2023 11:12 AM
To: Kimberly Pritchard <Kimberly_Pritchard@iroquois.com>; Spencer Robinson <spencer_robinson@iroquois.com>
Cc: Paul Amato <Paul_Amato@iroquois.com>; Michael J. Kinik <Michael_Kinik@iroquois.com>; Beata Orson <beata_orson@iroquois.com>
Subject: RE: CHPE Collocated Infrastructure Details_EM&CP 6_Iroquois

[External email: Use caution with links and attachments]

Thanks you! Will do. Forwarding to the CHPE legal folks now.

Ben Cole


ben.cole@wsp.com

From: Kimberly Pritchard <Kimberly_Pritchard@iroquois.com>
Sent: Tuesday, February 28, 2023 11:03 AM
To: Spencer Robinson <spencer_robinson@iroquois.com>; Cole, Benjamin <Ben.Cole@wsp.com>
Cc: Paul Amato <Paul_Amato@iroquois.com>; Michael J. Kinik <Michael_Kinik@iroquois.com>; Beata Orson <beata_orson@iroquois.com>
Subject: RE: CHPE Collocated Infrastructure Details_EM&CP 6_Iroquois

Attached is the NDA executed by IGTS. Please forward a copy of the fully executed NDA for our records.

Please let me know if you have any questions or need anything further.

Thank you,
Kim

From: Kimberly Pritchard
Sent: Tuesday, February 28, 2023 9:52 AM
To: Spencer Robinson <spencer_robinson@iroquois.com>; Cole, Benjamin <Ben.Cole@wsp.com>
Cc: Paul Amato <Paul_Amato@iroquois.com>; Michael J. Kinik <Michael_Kinik@iroquois.com>; Beata Orson <beata_orson@iroquois.com>
Subject: RE: CHPE Collocated Infrastructure Details_EM&CP 6_Iroquois

Thank you Spencer.

I didn't have any changes. I will have it circulated via DocuSign for Paul's signature and send you a copy executed by IGTS.

Thanks,
Kim

From: Spencer Robinson <spencer_robinson@iroquois.com>
Sent: Monday, February 27, 2023 4:23 PM
To: Cole, Benjamin <Ben.Cole@wsp.com>; Kimberly Pritchard <Kimberly_Pritchard@iroquois.com>
Cc: Paul Amato <Paul_Amato@iroquois.com>; athens_employees@iroquois.com; Michael J. Kinik <Michael_Kinik@iroquois.com>; Beata Orson <beata_orson@iroquois.com>
Subject: Re: CHPE Collocated Infrastructure Details_EM&CP 6_Iroquois

Thanks Ben,
I am adding our attorney Kimberly Prichard to this reply, we will review this and I will get right back to you

Spencer H. Robinson PLS
Iroquois Gas Transmission System LP

On Feb 27, 2023, at 4:16 PM, Cole, Benjamin <Ben.Cole@wsp.com> wrote:

Some people who received this message don't often get email from ben.cole@wsp.com. [Learn why this is important](#)

[External email: Use caution with links and attachments]

Hi Spencer,

Please see attached agreement for review. Thanks for your patience (I expected to get this to you quicker).

Ben Cole

[REDACTED]

ben.cole@wsp.com

From: Cole, Benjamin
Sent: Tuesday, February 21, 2023 8:42 AM
To: Spencer Robinson <spencer_robinson@iroquois.com>; Paul Amato <Paul_Amato@iroquois.com>
Cc: athens_employees@iroquois.com; Michael J. Kinik <Michael_Kinik@iroquois.com>; Beata Orson <beata_orson@iroquois.com>
Subject: RE: CHPE Collocated Infrastructure Details_EM&CP 6_Iroquois

Great – thank you Spencer. I've asked the CHPE team for one to provide.

Ben Cole

[REDACTED]

ben.cole@wsp.com

From: Spencer Robinson <spencer_robinson@iroquois.com>
Sent: Tuesday, February 21, 2023 8:31 AM
To: Cole, Benjamin <Ben.Cole@wsp.com>; Paul Amato <Paul_Amato@iroquois.com>
Cc: athens_employees@iroquois.com; Michael J. Kinik <Michael_Kinik@iroquois.com>; Beata Orson <beata_orson@iroquois.com>
Subject: RE: CHPE Collocated Infrastructure Details_EM&CP 6_Iroquois

Hi Ben,
Yes, I can provide you with the information that we have for this location. The first thing we need to get in place is a Non-disclosure Agreement.
If you have one that your company uses, please send me a draft that I can have our legal team review. Once we have that, we can quickly exchange detailed information.

Thanks
Spencer
Spencer H. Robinson PLS
Right of Way Manager
Iroquois Gas Transmission System, LP

Spencer_robinson@iroquois.com

[REDACTED]

From: Cole, Benjamin <Ben.Cole@wsp.com>
Sent: Monday, February 20, 2023 9:32 AM
To: Spencer Robinson <spencer_robinson@iroquois.com>; Paul Amato <Paul_Amato@iroquois.com>
Cc: athens_employees@iroquois.com; Michael J. Kinik <Michael_Kinik@iroquois.com>; Beata Orson <beata_orson@iroquois.com>
Subject: RE: CHPE Collocated Infrastructure Details_EM&CP 6_Iroquois

Some people who received this message don't often get email from ben.cole@wsp.com. [Learn why this is important](#)

[External email: Use caution with links and attachments]

Good Morning Spencer,

The CHPE design team has asked me to reach out for as-built information at the following crossing (please see attachments). Can you provide information such as that requested?

Please provide as-built data or record information, if any, in regards to the pipelines located in the surroundings of CSX RR & Iroquois Gas Transmission System properties, in the whereabouts of [REDACTED]
[REDACTED] It has also been reported this gas line may have been constructed as part of an HDD under the CSX Railroad tracks. This requested is in accordance to 49 C.F.R. § 196.103, 49 C.F.R. § 192.614

Thank You,

Ben Cole
[REDACTED]
ben.cole@wsp.com

From: Spencer Robinson <spencer_robinson@iroquois.com>
Sent: Tuesday, October 11, 2022 8:36 AM
To: Cole, Benjamin <Ben.Cole@wsp.com>; Paul Amato <Paul_Amato@iroquois.com>
Cc: athens_employees@iroquois.com; Michael J. Kinik <Michael_Kinik@iroquois.com>; Beata Orson <beata_orson@iroquois.com>
Subject: RE: CHPE Collocated Infrastructure Details_EM&CP 6_Iroquois

Sounds good, thank you.

From: Cole, Benjamin <Ben.Cole@wsp.com>
Sent: Tuesday, October 11, 2022 8:31 AM
To: Spencer Robinson <spencer_robinson@iroquois.com>; Paul Amato <Paul_Amato@iroquois.com>
Cc: athens_employees@iroquois.com; Michael J. Kinik <Michael_Kinik@iroquois.com>; Beata Orson <beata_orson@iroquois.com>
Subject: RE: CHPE Collocated Infrastructure Details_EM&CP 6_Iroquois

You don't often get email from ben.cole@wsp.com. [Learn why this is important](#)

[External email: Use caution with links and attachments]

Hi Spencer,

Thank you for the comments. I'll forward to the engineers.

The project minimum separations are 5' horizontal and 2' vertical. The CHPE cables (2) will each be in their own conduit.

Thank You,

Ben Cole

[REDACTED]

ben.cole@wsp.com

From: Spencer Robinson <spencer_robinson@iroquois.com>
Sent: Tuesday, October 11, 2022 8:12 AM
To: Cole, Benjamin <Ben.Cole@wsp.com>; Paul Amato <Paul_Amato@iroquois.com>
Cc: athens_employees@iroquois.com; Michael J. Kinik <Michael_Kinik@iroquois.com>; Beata Orson <beata_orson@iroquois.com>
Subject: RE: CHPE Collocated Infrastructure Details_EM&CP 6_Iroquois

Hello Ben,

I have received the plans and looked them over.

On page 1 of 1, there is a table entitled "Champlain Hudson Utility Summation Matrix" the table lists the Iroquois Natural Gas Pipeline as being [REDACTED]

Please add to the Notes that Iroquois Gas Transmission System LP must be contacted a minimum of 2 working days prior to any excavation over or near the Iroquois pipeline. Actual depth of the buried pipeline must be determined at the crossing location. A minimum of 18" separation must be maintained

for the crossing and the Champlain Power Express cable must be within a conduit extending 10 feet either side of the gas pipeline.

Thank You
Spencer

Spencer H. Robinson PLS
Right of Way Manager
Iroquois Gas Transmission System, LP

Spencer_robinson@iroquois.com

[REDACTED]

From: Cole, Benjamin <Ben.Cole@wsp.com>
Sent: Monday, October 10, 2022 4:29 PM
To: Spencer Robinson <spencer_robinson@iroquois.com>; Paul Amato <Paul_Amato@iroquois.com>
Subject: RE: CHPE Collocated Infrastructure Details_EM&CP 6_Iroquois

Some people who received this message don't often get email from ben.cole@wsp.com. [Learn why this is important](#)

[External email: Use caution with links and attachments]

Good Afternoon,

I'm checking in to see if you have comments on the drawings provide at the link below.

Thank You,

Ben Cole
[REDACTED]
ben.cole@wsp.com

From: Cole, Benjamin
Sent: Thursday, September 22, 2022 9:35 PM
To: spencer_robinson@iroquois.com; paul_amato@iroquois.com
Subject: CHPE Collocated Infrastructure Details_EM&CP 6_Iroquois

Good Morning,

I'm writing on behalf of Transmission Developers Inc. ("TDI"), owner of the Champlain Hudson Power Express ("CHPE" or "Project") transmission line project. The purpose of this correspondence is to provide more detailed information related to how the CHPE project is designed to interact with your infrastructure and to solicit feedback from your company regarding the Project's alignment.

As you may recall from previous communications from Rick Chase at TDI, the CHPE is a fully permitted 339-mile underground and underwater high voltage direct current (HVDC) electric transmission line that will import up to 1,250 MW of renewable power from Canada and send it to the New York City metro area (see <https://chpexpress.com> for additional information).

At the link below please find design drawings of the proposed CHPE alignment where it involves your infrastructure within the Segment 6 Environmental Management and Construction Plan ("EM&CP") Package 6.

Link: [Package 6 Iroquois Co-Located Infrastructure 2022-09-15.pdf](#)

TDI will be submitting these plans to the New York State Public Service Commission ("PSC") for portions of the Project in the Town of Athens. This information is a follow-up to previous communications to you providing general project information and typical infrastructure crossing drawings.

Please review the linked information regarding the CHPE alignment relating to your infrastructure and provide concurrence with the Project's cable separation and alignment and any feedback to me (ben.cole@wsp.com) by October 7, 2022. It is important to TDI that the construction and operation of the CHPE project does not interfere with the continued operation of your infrastructure.

To the extent that the CHPE alignment interacts with your infrastructure within future Segment EM&CP submissions, we will provide you with similar drawings in advance of those filings. I look forward to coordinating with you as we finalize the design of the CHPE project.

Sincerely,

Ben Cole
WSP USA, on behalf of TDI


ben.cole@wsp.com

NOTICE: This communication and any attachments ("this message") may contain information which is privileged, confidential, proprietary or otherwise subject to restricted disclosure under applicable law. This message is for the sole use of the intended recipient(s). Any unauthorized use, disclosure, viewing, copying, alteration, dissemination or distribution of, or reliance on, this message is strictly prohibited. If you have received this message in error, or you are not an authorized or intended recipient, please notify the sender immediately by replying to this message, delete this message and all copies from your e-mail system and destroy any printed copies.

-LAEmHhHzdJzBITWfa4Hgs7pbKl

Cole, Benjamin

From: Cole, Benjamin
Sent: Saturday, October 15, 2022 10:14 AM
To: David MACLAUCHLIN
Subject: Re: CHPE Collocated Infrastructure Details for Lafarge

Great. Thank you Dave.

Ben

On Oct 15, 2022, at 6:31 AM, David MACLAUCHLIN <david.maclauchlin@holcim.com> wrote:

Ben

No comments

On Mon, Oct 10, 2022 at 4:26 PM Cole, Benjamin <Ben.Cole@wsp.com> wrote:

Good Afternoon Dave,

I'm checking in to see if you have comments on the drawings at the link below.

Thank You,

Ben Cole



ben.cole@wsp.com

From: Cole, Benjamin
Sent: Friday, September 23, 2022 4:25 PM
To: David MACLAUCHLIN <david.maclauchlin@holcim.com>
Subject: RE: CHPE Collocated Infrastructure Details for Lafarge

Thank you Dave,

Will do. The Project is a fully permitted 339-mile underground and underwater high voltage direct current (HVDC) electric transmission line that will import up to 1,250 MW of renewable power from Canada and send it to the New York City metro area (see <https://chpexpress.com> for additional information).

At the link below please find design drawings of the proposed CHPE alignment where it involves your infrastructure within the Environmental Management and Construction Plan ("EM&CP") Package 6.

Link: [Package 6 La Farge Co-Located Infrastructure 2022-09-15.pdf](#)

TDI will be submitting these plans to the New York State Public Service Commission ("PSC") for portions of the Project in your area.

Please review the linked information regarding the CHPE alignment relating to your infrastructure and provide concurrence with the Project's cable separation and alignment and any feedback to me (ben.cole@wsp.com) by October 7, 2022. It is important to TDI that the construction and operation of the CHPE project does not interfere with the continued operation of your infrastructure.

To the extent that the CHPE alignment interacts with your infrastructure within future Segment EM&CP submissions, we will provide you with similar drawings in advance of those filings. I look forward to coordinating with you as we finalize the design of the CHPE project.

Thank You,

Ben Cole



ben.cole@wsp.com

From: David MACLAUCHLIN <david.maclauchlin@holcim.com>
Sent: Friday, September 23, 2022 4:14 PM
To: Cole, Benjamin <Ben.Cole@wsp.com>
Subject: Re: CHPE Collocated Infrastructure Details for Lafarge

Please use me as your point of contact.

Dave

On Fri, Sep 23, 2022 at 12:22 PM 'Cole, Benjamin' via Ravena <ravena@lafargeholcim.com> wrote:

Good Afternoon,

My name is Ben Cole and I'm working with Transmission Developers, Inc. (TDI) to provide information to stakeholders on the Champlain Hudson Power Express project (please see <https://chpexpress.com/> for more information about the project). The project will be constructed in your area and I'd like to share detailed information with your organization, to solicit feedback on how the CHPE alignment will interact with your infrastructure. Please provide a name, phone number, and email address for someone who I may contact with project details.

Thank You,

Ben



Ben Cole, PG

Lead Consultant

Professional Geologist



ben.cole@wsp.com

WSP USA





wsp.com

NOTICE: This communication and any attachments ("this message") may contain information which is privileged, confidential, proprietary or otherwise subject to restricted disclosure under applicable law. This message is for the sole use of the intended recipient(s). Any unauthorized use, disclosure, viewing, copying, alteration, dissemination or distribution of, or reliance on, this message is strictly prohibited. If you have received this message in error, or you are not an authorized or intended recipient, please notify the sender immediately by replying to this message, delete this message and all copies from your e-mail system and destroy any printed copies.

-LAEmHhHzdJzBITWfa4Hgs7pbKI

--

David MacLauchlin
Plant Manager



Cole, Benjamin

From: Cole, Benjamin
Sent: Thursday, September 22, 2022 10:00 PM
To: mike.fitzgerald@verizon.com
Subject: CHPE Collocated Infrastructure Details_EM&CP 6, and 7A MCI and Verizon

Good Evening,

I'm writing on behalf of Transmission Developers Inc. ("TDI"), owner of the Champlain Hudson Power Express ("CHPE" or "Project") transmission line project. The purpose of this correspondence is to provide more detailed information related to how the CHPE project is designed to interact with your infrastructure and to solicit feedback from your company regarding the Project's alignment.

As you may recall from previous communications from Rick Chase at TDI, the CHPE is a fully permitted 339-mile underground and underwater high voltage direct current (HVDC) electric transmission line that will import up to 1,250 MW of renewable power from Canada and send it to the New York City metro area (see <https://chpexpress.com> for additional information).

At the link below please find design drawings of the proposed CHPE alignment where it involves your infrastructure within the Segment 6 Environmental Management and Construction Plan ("EM&CP") Packages 6, and 7A.

Link: [Package 6 MCI Co-Located Infrastructure 2022-09-15.pdf](#)

Link: [Package 7A MCI & Verizon Co-Located Infrastructure 2022-09-15.pdf](#)

TDI will be submitting these plans to the New York State Public Service Commission ("PSC") for portions of the Project in the Towns of Bethlehem, Coeymans, New Baltimore, Coxsackie, Athens, and Catskill. This information is a follow-up to previous communications to you providing general project information and typical infrastructure crossing drawings.

Please review the linked information regarding the CHPE alignment relating to your infrastructure and provide concurrence with the Project's cable separation and alignment and any feedback to me (ben.cole@wsp.com) by October 7, 2022. It is important to TDI that the construction and operation of the CHPE project does not interfere with the continued operation of your infrastructure.

To the extent that the CHPE alignment interacts with your infrastructure within future Segment EM&CP submissions, we will provide you with similar drawings in advance of those filings. I look forward to coordinating with you as we finalize the design of the CHPE project.

Sincerely,

Ben Cole
WSP USA, on behalf of TDI


ben.cole@wsp.com

Cole, Benjamin

From: Cole, Benjamin
Sent: Tuesday, March 28, 2023 11:20 AM
To: Stephen.Parretti@verizon.com.
Cc: Fitzgerald, Michael
Subject: FW: CHPE Collocated Infrastructure Details_EM&CP 4B, 6, and 7A MCI Verizon Business

Good Morning,

Please see information and links below to download plans/profiles of the CHPE alignment, where it interacts with Verizon Business/formerly MCI infrastructure in three areas of the Project. Please review the linked information and provide any comments that you may have with regard to how the CHPE project interacts with your infrastructure.

Thank you,

Ben Cole


ben.cole@wsp.com

From: Cole, Benjamin
Sent: Friday, February 10, 2023 12:02 PM
To: Fitzgerald, Michael <mike.fitzgerald@verizon.com>
Subject: RE: CHPE Collocated Infrastructure Details_EM&CP 4B, 6, and 7A MCI Verizon Business

Hi Mr. Fitzgerald,

Please find new links to download the information previously provided and let me know if you have comments or would like to have a call with the CHPE team. We are trying to gather all comments on Package 4B currently.

[Verizon Bus MCI Pckg 4B](#)

[Verizon Bus MCI Pckg 6](#)

[Verizon Bus MCI Pckg 7A](#)

Thank You,

Ben Cole


ben.cole@wsp.com

From: Cole, Benjamin
Sent: Wednesday, November 2, 2022 4:07 PM
To: Fitzgerald, Michael <mike.fitzgerald@verizon.com>
Subject: CHPE Collocated Infrastructure Details_EM&CP 4B, 6, and 7A MCI Verizon Business

Good Afternoon Mr. Fitzgerald,

I'm writing on behalf of Transmission Developers Inc. ("TDI"), owner of the Champlain Hudson Power Express ("CHPE" or "Project") transmission line project. The purpose of this correspondence is to provide more detailed information related to how the CHPE project is designed to interact with your infrastructure and to solicit feedback from your company regarding the Project's alignment.

The CHPE is a fully permitted 339-mile underground and underwater high voltage direct current (HVDC) electric transmission line that will import up to 1,250 MW of renewable power from Canada and send it to the New York City metro area (see <https://chpexpress.com> for additional information).

At the links below please find design drawings of the proposed CHPE alignment where it involves your infrastructure within the Segment 6 Environmental Management and Construction Plan ("EM&CP") Packages 4B, 6, and 7A.

Links:

[Package 4B MCI Co-Located Infrastructure Package 2022-10-31.pdf](#)

[Package 6 MCI Co-Located Infrastructure 2022-09-15.pdf](#)

[Package 7A MCI Co-Located Infrastructure Package 2022-10-31.pdf](#)

TDI will be submitting these plans to the New York State Public Service Commission ("PSC") for portions of the Project in your area. This information is a follow-up to previous communications to you providing general project information and typical infrastructure crossing drawings.

Please review the linked information regarding the CHPE alignment relating to your infrastructure and provide concurrence with the Project's cable separation and alignment and any feedback to me (ben.cole@wsp.com) by November 16, 2022. It is important to TDI that the construction and operation of the CHPE project does not interfere with the continued operation of your infrastructure.

To the extent that the CHPE alignment interacts with your infrastructure within future Segment EM&CP submissions, we will provide you with similar drawings in advance of those filings. I look forward to coordinating with you as we finalize the design of the CHPE project.

Sincerely,



Ben Cole, PG

Lead Consultant

Professional Geologist*

*AR, DE, GA, IL, KY, NC, NY, PA



ben.cole@wsp.com

WSP USA



wsp.com

Cole, Benjamin

From: Cole, Benjamin
Sent: Monday, April 10, 2023 3:32 PM
To: sean.murphy@verizon.com; steven.paretti@verizon.com; mike.yancey@verizon.com
Cc: Hill, Nathaniel RT (Nate); Scaia-Harbinger, Elaine M
Subject: FW: CHPE Collocated Infrastructure Details_EM&CP 4B, 6, and 7A MCI Verizon Business
Attachments: FW E Champlain Hudson Power Express and VzB Infrastructure_2 (1).msg

Importance: High

Good Afternoon Sean, All,

I'm reaching out to see if Verizon Business has feedback/comments on the updated plan/profile drawings provided at the following link:

[CHPE-SUB-0093.03-00-MCI - CI Owner Package - 4B - 03-13-2023.pdf](#)

The CHPE design is moving toward completion and we are very much interested in feedback and comments regarding how the CHPE transmission lines are proposed to interact with your assets.

Please review the information at the link and provide any comments that you may have at your earliest convenience.

Please see information at the bottom of this thread for background.

Thank You,

Ben Cole


ben.cole@wsp.com

From: Cole, Benjamin
Sent: Monday, April 10, 2023 3:16 PM
To: Fitzgerald, Michael <mike.fitzgerald@verizon.com>
Cc: m.yancey1@verizon.com; Stephen.Parretti@verizon.com; Hill, Nathaniel RT (Nate) <nathaniel.hill@verizon.com>; Grassi, Laura <Laura.Grassi@wsp.com>
Subject: RE: CHPE Collocated Infrastructure Details_EM&CP 4B, 6, and 7A MCI Verizon Business

Hi Mr. Fitzgerald,

At the following link please find the current CHPE plan/profile where the Project interacts with Verizon Business/MCI assets.

[CHPE-SUB-0093.03-00-MCI - CI Owner Package - 4B - 03-13-2023.pdf](#)

I have not seen feedback from Verizon Business, other than an exchange between you and Rick Chase in early 2022 (Rick has retired).

Please provide any feedback or comments that you may have with respect to the interactions depicted in the drawings as the Project moves toward design completion.

Please let me know if you have feedback on the plan/profile set available at the link.

Thank You,

Ben Cole

ben.cole@wsp.com

From: Cole, Benjamin

Sent: Friday, February 10, 2023 12:02 PM

To: Fitzgerald, Michael <mike.fitzgerald@verizon.com>

Subject: RE: CHPE Collocated Infrastructure Details_EM&CP 4B, 6, and 7A MCI Verizon Business

Hi Mr. Fitzgerald,

Please find new links to download the information previously provided and let me know if you have comments or would like to have a call with the CHPE team. We are trying to gather all comments on Package 4B currently.

[Verizon Bus MCI Pckg 4B](#)

[Verizon Bus MCI Pckg 6](#)

[Verizon Bus MCI Pckg 7A](#)

Thank You,

Ben Cole

ben.cole@wsp.com

From: Cole, Benjamin

Sent: Wednesday, November 2, 2022 4:07 PM

To: Fitzgerald, Michael <mike.fitzgerald@verizon.com>

Subject: CHPE Collocated Infrastructure Details_EM&CP 4B, 6, and 7A MCI Verizon Business

Good Afternoon Mr. Fitzgerald,

I'm writing on behalf of Transmission Developers Inc. ("TDI"), owner of the Champlain Hudson Power Express ("CHPE" or "Project") transmission line project. The purpose of this correspondence is to provide more detailed information related to how the CHPE project is designed to interact with your infrastructure and to solicit feedback from your company regarding the Project's alignment.

The CHPE is a fully permitted 339-mile underground and underwater high voltage direct current (HVDC) electric transmission line that will import up to 1,250 MW of renewable power from Canada and send it to the New York City metro area (see <https://chpexpress.com> for additional information).

At the links below please find design drawings of the proposed CHPE alignment where it involves your infrastructure within the Segment 6 Environmental Management and Construction Plan ("EM&CP") Packages 4B, 6, and 7A.

Links:

[Package 4B MCI Co-Located Infrastructure Package 2022-10-31.pdf](#)

[Package 6 MCI Co-Located Infrastructure 2022-09-15.pdf](#)

[Package 7A MCI Co-Located Infrastructure Package 2022-10-31.pdf](#)

TDI will be submitting these plans to the New York State Public Service Commission (“PSC”) for portions of the Project in your area. This information is a follow-up to previous communications to you providing general project information and typical infrastructure crossing drawings.

Please review the linked information regarding the CHPE alignment relating to your infrastructure and provide concurrence with the Project’s cable separation and alignment and any feedback to me (ben.cole@wsp.com) by November 16, 2022. It is important to TDI that the construction and operation of the CHPE project does not interfere with the continued operation of your infrastructure.

To the extent that the CHPE alignment interacts with your infrastructure within future Segment EM&CP submissions, we will provide you with similar drawings in advance of those filings. I look forward to coordinating with you as we finalize the design of the CHPE project.

Sincerely,



Ben Cole, PG

Lead Consultant

Professional Geologist*

*AR, DE, GA, IL, KY, NC, NY, PA



ben.cole@wsp.com

WSP USA



wsp.com

Cole, Benjamin

From: Parretti, Stephan R <stephen.parretti@verizon.com>
Sent: Wednesday, April 12, 2023 10:06 AM
To: Cole, Benjamin
Subject: Re: [E] RE: CHPE Collocated Infrastructure Details_EM&CP 4B, 6, and 7A MCI Verizon Business
Attachments: 005752-01 Vol 2 (1).pdf

Ben ,

The attached should cover the Cocksackie to Kingston area

On Tue, Apr 11, 2023 at 4:08 PM Cole, Benjamin <Ben.Cole@wsp.com> wrote:

Hi again Steve,

Please see the most recent plan/profile for package 7A at the link.

[CHPE-SUB-0114.04-00-MCI - CI Owner Package - 7A - 03-21-2023.pdf](#)

Updated Package 6 is not yet available but expected to be soon. I'll forward that when it is.

Thanks,

Ben Cole



ben.cole@wsp.com

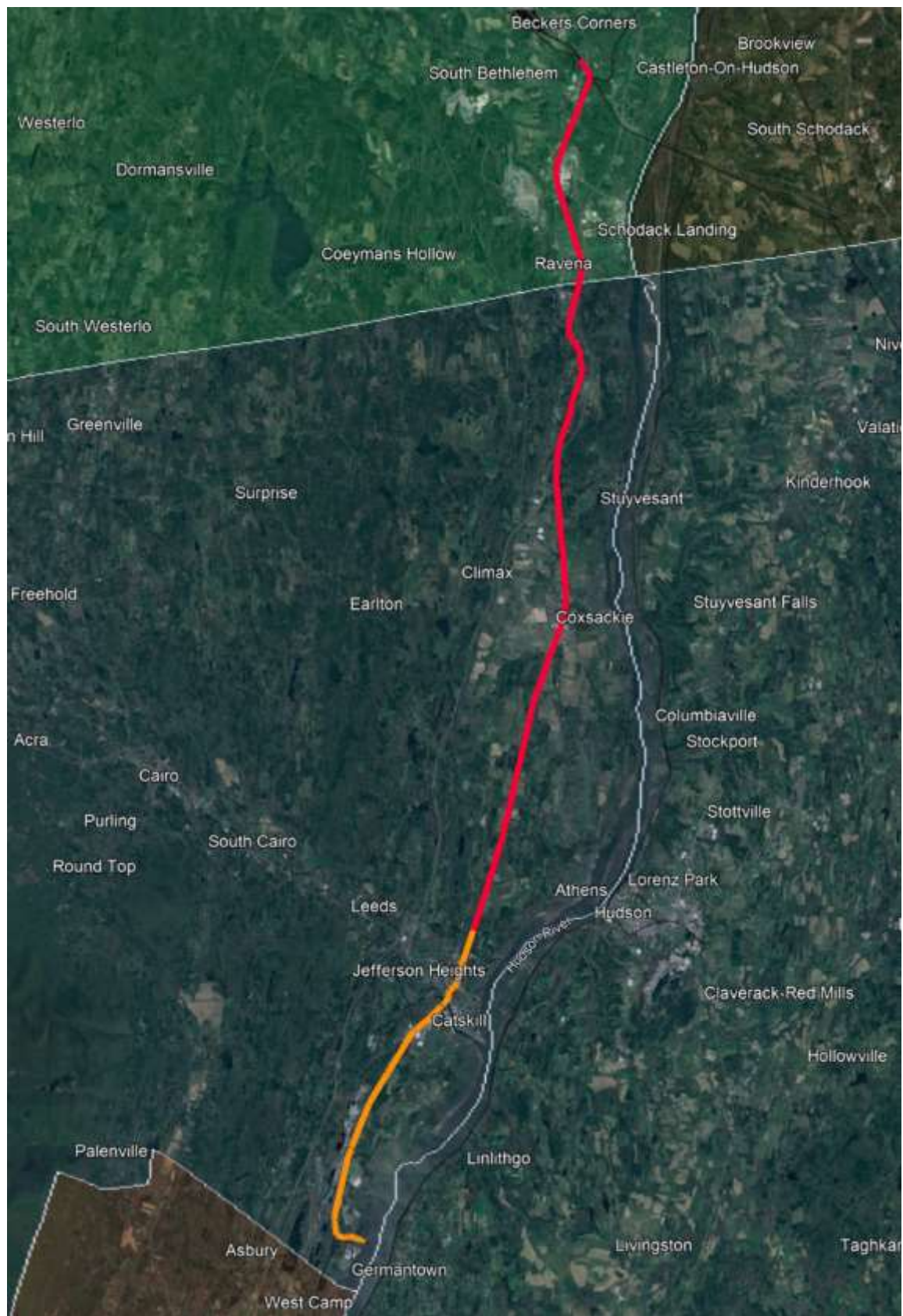
From: Cole, Benjamin
Sent: Tuesday, April 11, 2023 4:01 PM
To: 'Parretti, Stephan R' <stephen.parretti@verizon.com>
Subject: RE: [E] RE: CHPE Collocated Infrastructure Details_EM&CP 4B, 6, and 7A MCI Verizon Business

Hi Steve,

I just heard back from the design team with a followup question.

Looks like what you provided (thank you again) covers facilities generally located from Glenville (CHPE Package 4A) through Rotterdam (north end of CHPE Package 5A).

Are there drawings/information available for facilities in CHPE Packages 6 and 7A (south end of Albany County through South end of Greene County; please see below: red = Package 6, Orange = Package 7A)?



Thanks,

Ben Cole



ben.cole@wsp.com

From: Cole, Benjamin
Sent: Tuesday, April 11, 2023 12:54 PM
To: Parretti, Stephan R <stephen.parretti@verizon.com>
Subject: RE: [E] RE: CHPE Collocated Infrastructure Details_EM&CP 4B, 6, and 7A MCI Verizon Business

Great. Thanks again Steve. Will do.

Ben Cole



ben.cole@wsp.com

From: Parretti, Stephan R <stephen.parretti@verizon.com>
Sent: Tuesday, April 11, 2023 12:27 PM
To: Cole, Benjamin <Ben.Cole@wsp.com>
Subject: Re: [E] RE: CHPE Collocated Infrastructure Details_EM&CP 4B, 6, and 7A MCI Verizon Business

Ben,

Please see attached asbuilts. Let me know if you have any questions.

On Tue, Apr 11, 2023 at 11:08 AM Cole, Benjamin <Ben.Cole@wsp.com> wrote:

Hi Steve,

Glad to speak with you! Noting for my benefit when search in the future, number is [REDACTED]

As discussed, please find attached draft schedule. Verizon Business appears to be located in CHPE design packages 4B, 6 and 7A.

Looking forward to any as-built drawings you can provide.

Thank you,

Ben Cole

[REDACTED]

ben.cole@wsp.com

From: Cole, Benjamin

Sent: Tuesday, April 11, 2023 8:58 AM

To: Parretti, Stephan R <stephen.parretti@verizon.com>

Cc: Fitzgerald, Michael <mike.fitzgerald@verizon.com>; m.yancey1@verizon.com; Hill, Nathaniel RT (Nate) <nathaniel.hill@verizon.com>; Grassi, Laura <Laura.Grassi@wsp.com>

Subject: RE: [E] RE: CHPE Collocated Infrastructure Details_EM&CP 4B, 6, and 7A MCI Verizon Business

Hi Steve,

I just tried calling a couple times but am getting a message 'the number you dialed is not in service.' I've triple checked and am dialing [REDACTED] Is there another number available? Please give me a call if not because I am not able to get through. My number is [REDACTED]

Thank you!

Ben

From: Cole, Benjamin
Sent: Tuesday, April 11, 2023 8:53 AM
To: Parretti, Stephan R <stephen.parretti@verizon.com>
Cc: Fitzgerald, Michael <mike.fitzgerald@verizon.com>; m.yancey1@verizon.com; Hill, Nathaniel RT (Nate) <nathaniel.hill@verizon.com>; Grassi, Laura <Laura.Grassi@wsp.com>
Subject: RE: [E] RE: CHPE Collocated Infrastructure Details_EM&CP 4B, 6, and 7A MCI Verizon Business

Thank you Sir! Will call momentarily.

Ben Cole



ben.cole@wsp.com

From: Parretti, Stephan R <stephen.parretti@verizon.com>
Sent: Tuesday, April 11, 2023 8:51 AM
To: Cole, Benjamin <Ben.Cole@wsp.com>
Cc: Fitzgerald, Michael <mike.fitzgerald@verizon.com>; m.yancey1@verizon.com; Hill, Nathaniel RT (Nate) <nathaniel.hill@verizon.com>; Grassi, Laura <Laura.Grassi@wsp.com>
Subject: Re: [E] RE: CHPE Collocated Infrastructure Details_EM&CP 4B, 6, and 7A MCI Verizon Business

Ben,

Mike Fitzgerald is no longer with Verizon Business. Please give me a call on the project when you have a chance.

Thanks

Steve P

--

OSP Sr. Engineer



--

OSP Sr. Engineer

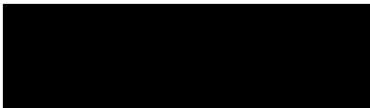


NOTICE: This communication and any attachments ("this message") may contain information which is privileged, confidential, proprietary or otherwise subject to restricted disclosure under applicable law. This message is for the sole use of the intended recipient(s). Any unauthorized use, disclosure, viewing, copying, alteration, dissemination or distribution of, or reliance on, this message is strictly prohibited. If you have received this message in error, or you are not an authorized or intended recipient, please notify the sender immediately by replying to this message, delete this message and all copies from your e-mail system and destroy any printed copies.

-LAEmHhHzdJzBITWfa4Hgs7pbKI

--

OSP Sr. Engineer



Cole, Benjamin

From: Cole, Benjamin
Sent: Monday, December 19, 2022 7:36 AM
To: Bridget.Grabner@nationalgrid.com
Cc: Timothy.Dzimian@nationalgrid.com; Aspinall, Pamela; Rick Chase
Subject: CHPE National Grid PTR Applications for Packages 3, 4B, and 6

Good Morning Bridget,

The links below direct to PTR Applications for Champlain Hudson Power Express Packages 3, 4B and 6. These segments of the transmission line includes the Towns of Fort Edward, Moreau, Northumberland, Wilton, Saratoga, and Milton in Washington and Saratoga Counties (Package 3); the Towns of Glenville and Rotterdam in Schenectady County (Package 4B); and the Towns of Bethlehem, Coeymans, New Baltimore, Coxsackie, and Athens in Albany and Greene Counties (Package 6). The applications incorporate the items on the Land Use Application Checklist and includes in-progress plans and profiles for interactions with National Grid overhead and underground electric and underground gas infrastructure. As we've discussed, your review of these in-progress plans will ensure proper interactions with your infrastructure and will give CHPE the opportunity to confirm that the design provides adequate protections, and allows for necessary design changes based on your review prior to plans being submitted to the Public Service Commission for approval.

Links:

[Segment 4 and 5 Package 3](#)

[Segment 7 Package 4B](#)

[Segment 10 Package 6](#)

Please note the links expires in 60 days.

We are currently finalizing aeriels for a small number of locations and will upload final versions as soon as they are available. As previously discussed, the designers continue revising the matrices that are found at the beginning of each plan/profile set to make it easier for reviewers to locate the interactions in the drawing sets. We'll upload those as soon as available, but, in the interest of expediency, want to make the plans available to National Grid now.

Thank you for your attention to this matter, and please let me know if anything else is needed.

Ben Cole



ben.cole@wsp.com

Cole, Benjamin

From: Cole, Benjamin
Sent: Friday, March 31, 2023 2:39 PM
To: Graber, Bridget
Cc: Grassi, Laura; Hanford, Madeline; Aspinall, Pamela
Subject: RE: [EXTERNAL] CHPE National Grid PTR Applications for Packages 3, 4B, and 6

Thanks Bridget. Yes. We have not yet received the updated drawings that will address the discrepancies and will forward asap when received.

Ben Cole


ben.cole@wsp.com

From: Graber, Bridget <Bridget.Graber@nationalgrid.com>
Sent: Friday, March 31, 2023 2:37 PM
To: Cole, Benjamin <Ben.Cole@wsp.com>
Cc: Grassi, Laura <Laura.Grassi@wsp.com>; Hanford, Madeline <Maddy.Hanford@wsp.com>; Graber, Bridget <Bridget.Graber@nationalgrid.com>; Aspinall, Pamela <Pamela.Aspinall@nationalgrid.com>
Subject: RE: [EXTERNAL] CHPE National Grid PTR Applications for Packages 3, 4B, and 6

Hi Ben.

As we just talked about – I am waiting for you to get back to us with the discrepancies from when I sent them on March 1 for those packages.

Thanks!

Bridget

Bridget Graber, M.A.

Consulting Land Agent

Right of Way and Survey Engineering

nationalgrid | Business Services


Bridget.Graber@nationalgrid.com


[nationalgrid.com](https://www.nationalgrid.com) | [Twitter](#) | [LinkedIn](#) | [Facebook](#)

UPCOMING VACATION DATES: April 5-12, 2023

Please consider the environment before printing this email.

From: Cole, Benjamin <Ben.Cole@wsp.com>
Sent: Friday, March 31, 2023 2:24 PM
To: Graber, Bridget <Bridget.Graber@nationalgrid.com>
Cc: Grassi, Laura <Laura.Grassi@wsp.com>; Hanford, Madeline <Maddy.Hanford@wsp.com>
Subject: RE: [EXTERNAL] CHPE National Grid PTR Applications for Packages 3, 4B, and 6

CAUTION: This email originated from outside of the organisation. Do not click links or open attachments unless you recognise the sender and know the content is safe. If you suspect this email is malicious, please use the 'Report Phish' button.

Hi Bridget,

Please see links below. I believe 4B includes the Rotterdam/Rt 146A area that is currently being worked out. Maddy can you weigh in on **this** from the Lands perspective?

[Segment 4 and 5 Package 3](#)

[Segment 7 Package 4B](#)

[Segment 10 Package 6](#)

Thanks,

Ben Cole

ben.cole@wsp.com

From: Graber, Bridget <Bridget.Graber@nationalgrid.com>

Sent: Friday, March 31, 2023 1:40 PM

To: Cole, Benjamin <Ben.Cole@wsp.com>

Subject: RE: [EXTERNAL] CHPE National Grid PTR Applications for Packages 3, 4B, and 6

Hi Ben,

Can you re-send me this link for this Segment?

Were we waiting on anything from you regarding this package?

Thanks!

Bridget

Bridget Graber, M.A.

Consulting Land Agent

Right of Way and Survey Engineering

nationalgrid | [Business Services](#)

Bridget.Graber@nationalgrid.com

nationalgrid.com | [Twitter](#) | [LinkedIn](#) | [Facebook](#)

UPCOMING VACATION DATES: April 5-12, 2023

Please consider the environment before printing this email.

From: Cole, Benjamin <Ben.Cole@wsp.com>

Sent: Monday, December 19, 2022 7:36 AM

To: Graber, Bridget <Bridget.Graber@nationalgrid.com>

Cc: Dzimian, Timothy S. <Timothy.Dzimian@nationalgrid.com>; Aspinall, Pamela <Pamela.Aspinall@nationalgrid.com>;

Rick Chase <rick.chase@transmissiondevelopers.com>

Subject: [EXTERNAL] CHPE National Grid PTR Applications for Packages 3, 4B, and 6

CAUTION: This email originated from outside of the organisation. Do not click links or open attachments unless you recognise the sender and know the content is safe. If you suspect this email is malicious, please use the 'Report Phish' button.

Good Morning Bridget,

The links below direct to PTR Applications for Champlain Hudson Power Express Packages 3, 4B and 6. These segments of the transmission line includes the Towns of Fort Edward, Moreau, Northumberland, Wilton, Saratoga, and Milton in Washington and Saratoga Counties (Package 3); the Towns of Glenville and Rotterdam in Schenectady County (Package 4B); and the Towns of Bethlehem, Coeymans, New Baltimore, Cossackie, and Athens in Albany and Greene Counties (Package 6). The applications incorporate the items on the Land Use Application Checklist and includes in-progress plans and profiles for interactions with National Grid overhead and underground electric and underground gas infrastructure. As we've discussed, your review of these in-progress plans will ensure proper interactions with your infrastructure and will give CHPE the opportunity to confirm that the design provides adequate protections, and allows for necessary design changes based on your review prior to plans being submitted to the Public Service Commission for approval.

Links:

[Segment 4 and 5 Package 3](#)

[Segment 7 Package 4B](#)

[Segment 10 Package 6](#)

Please note the links expires in 60 days.

We are currently finalizing aerials for a small number of locations and will upload final versions as soon as they are available. As previously discussed, the designers continue revising the matrices that are found at the beginning of each plan/profile set to make it easier for reviewers to locate the interactions in the drawing sets. We'll upload those as soon as available, but, in the interest of expediency, want to make the plans available to National Grid now.

Thank you for your attention to this matter, and please let me know if anything else is needed.

Ben Cole


ben.cole@wsp.com

NOTICE: This communication and any attachments ("this message") may contain information which is privileged, confidential, proprietary or otherwise subject to restricted disclosure under applicable law. This message is for the sole use of the intended recipient(s). Any unauthorized use, disclosure, viewing, copying, alteration, dissemination or distribution of, or reliance on, this message is strictly prohibited. If you have received this message in error, or you are not an authorized or intended recipient, please notify the sender immediately by replying to this message, delete this message and all copies from your e-mail system and destroy any printed copies.

-LAEmHhHzdJzBITWfa4Hgs7pbKl

This e-mail, and any attachments are strictly confidential and intended for the addressee(s) only. The content may also contain legal, professional or other privileged information. If you are not the intended recipient, please notify the sender immediately and then delete the e-mail and any attachments. You should not disclose, copy or take any action in reliance on this transmission.

You may report the matter by contacting us via our [UK Contacts Page](#) or our [US Contacts Page](#) (accessed by clicking on the appropriate link)

Please ensure you have adequate virus protection before you open or detach any documents from this transmission. National Grid plc and its affiliates do not accept any liability for viruses. An e-mail reply to this address may be subject to monitoring for operational reasons or lawful business practices.

For the registered information on the UK operating companies within the National Grid group please use the attached link: <https://www.nationalgrid.com/group/about-us/corporate-registrations>