

APPENDIX R
CASE 10-T-0139
DOCUMENTATION OF CI CONSULTATIONS HAVING
OCCURRED

Champlain Hudson Power Express

Upland Co-Located Utility Summation Matrix

Revision Date: 07/25/23

Segment(s)	General Location of Utility		Owner	Utility	Utility		Quality Level (A/B/C/D)
	Station (Starting Point for Parallel and Crossing Point for Perpendicular)	Station (Ending Point for Parallel)			Types of Interaction	Description	
	45000+26	45060+50	MCI	OH Utility (Fiber)	Parallel	OH Utility Fiber parallels West of Tracks	B
	45004+04		National Grid	OH Utility Line (Electric)	Perpendicular	(2) OH Electric line on North side of Maple Ave	B
	45004+09		Time Warner Cable	OH Utility (Telephone)	Perpendicular	UG telephone on North side of Maple Ave, 2(OT)s	B
	45004+12		National Grid	UG Utility (Gas)	Perpendicular	UG Gas line on North side of Maple Ave	B
	45004+20		Town of Glenville	Water Line	Perpendicular	Water line along center of Maple Ave	B
	45022+35		National Grid	OH Utility Line (Electric)	Perpendicular	OH electric line crossing RR Tracks - Pole OHW12	B
	45022+90		Pan Am	Storm Drainage Pipe/Culvert	Perpendicular	Perpendicular Concrete Box with Wing Walls on west side of the alignment	B
	45023+20		CP RR	OH Utility Antenna (Electric)	Perpendicular	Existing Antenna on west side of the alignment	B
	45023+31	45023+65	Pan Am	Storm Drainage Pipe/Culvert	Parallel	HDPE Culvert for Access crossing on west side of the alignment	B
	45038+46		CP RR	OH Utility Antenna (Electric)	Perpendicular	Existing Antenna on west side of the alignment	B
	45041+00		CP RR	OH Utility Antenna (Electric)	Perpendicular	Existing Antenna on west side of the alignment	B
	45049+99		Pan Am	Storm Drainage Pipe/Culvert	Perpendicular	Stone Culvert crosses tracks on west side of the alignment	B
	45055+00		Pan Am	Storm Drainage Pipe/Culvert	Perpendicular	Stone Culvert crosses tracks on west side of the alignment	B
	45059+70		CP RR	OH Utility Antenna (Electric)	Perpendicular	Existing Antenna on west side of the alignment	B
	45060+37		Pan Am	Storm Drainage Pipe/Culvert	Perpendicular	CMP Culvert crossing RR Tracks	B

	45060+37		MCI	OH Utility (Fiber)	Perpendicular	OH Fiber crossing just North of Ronald Reagan Way	B
	45060+37	45086+00	MCI	OH Utility (Fiber)	Parallel	Parallel UG Fiber on east side of the alignment	B
	45060+89	45062+12	Town of Glenville	Sanitary Sewer	Parallel	Sanitary Sewer Parallel to alignment on west side	B
	45060+89	45061+33	NYSDOT Albany	UG Utility (Electric)	Parallel	UG Electric running on the east side of the RR	B
	45061+11		Time Warner Cable	OH Utility (Fiber)	Perpendicular	OH Fiber crossing Ronald Reagan Way	D
	45060+22	45067+90	National Grid	OH Utility Line (Electric)	Parallel	Parallel OH Electric on west side of the alignment	B
	45061+00		CP RR	OH Utility Antenna (Electric)	Perpendicular	Existing Antenna on west side of the alignment	B
	45061+46		National Grid	OH Utility Line (Electric)	Perpendicular	(2) OH electric crossing just South of Ronald Reagan Way	B
	45061+48		National Grid	OH Utility Pole (Electric)	Perpendicular	OH electric pole just Sout of RR Way,	B
	45062+12		Town of Glenville	Sanitary Sewer	Perpendicular	Sanitary Sewer crossing just South of Ronald Reagan Way	B
	45061+70		National Grid	OH Utility Locker (Electric)	Perpendicular	Electric Locker on west side of the alignment	B
	45061+60		National Grid	OH Utility Pole (Electric)	Perpendicular	OH electric pole just Sout of RR Way,	B
	45063+93		National Grid	OH Utility Pole (Electric)	Perpendicular	OH electric pole on west side of alignment	B
	45066+25		Pan Am	Storm Sewer	Perpendicular	CMP Storm Sewer crosses the alignment	B
	45066+84		National Grid	OH Utility Pole (Electric)	Perpendicular	OH electric pole on east side of alignment	B
	45068+28		CP RR	OH Utility Pole (Electric)	Perpendicular	OH electric pole on east side of alignment	B
	45069+76		CP RR	OH Utility Pole (Electric)	Perpendicular	OH electric pole on east side of alignment	B
	45072+62		CP RR	OH Utility Pole (Electric)	Perpendicular	OH electric pole on east side of alignment	B
	45075+49		Schenectady County	Storm Drainage Pipe/Culvert	Perpendicular	CMP Culvert crossing Maple Ave	B
	45075+58		CP RR	OH Utility Pole (Electric)	Perpendicular	OH electric pole on east side of alignment	B
	45082+79		CP RR	OH Utility Pole (Electric)	Perpendicular	OH electric pole on east side of alignment	B
	45083+67		Pan Am	Storm Sewer	Perpendicular	Stone Box crosses RR Tracks	B
	45084+29		CP RR	OH Utility Pole (Electric)	Perpendicular	OH electric pole on east side of alignment	B

	45085+43		Schenectady County	Storm Drainage Pipe/Culvert	Perpendicular	CMP Culvert crossing Maple Ave	B
	45085+67		National Grid	OH Utility Pole (Electric)	Perpendicular	OH electric pole and guy wire, OHW2	B
	45086+00		MCI	OH Utility (Fiber)	Perpendicular	OH Fiber crosses back over RR Tracks at this location	B
	45086+00	45192+00	MCI	OH Utility (Fiber)	Parallel	OH Fiber crosses back over RR Tracks at this location - same side as alignment	B
	45086+65		Pan Am	Storm Drainage Pipe/Culvert	Perpendicular	Perpendicular Culvert on east side of the alignment	B
	45090+52		Pan Am	Storm Drainage Pipe/Culvert	Perpendicular	Perpendicular Culvert on east side of the alignment	B
	45096+86		National Grid	OH Utility Line (Electric)	Perpendicular	OH electric crossing RR Tracks	B
	45103+17		Pan Am	Storm Sewer	Perpendicular	RR Bridge Structure	B
	45096+86		National Grid	OH Utility Pole (Electric)	Perpendicular	OH electric pole on west side of alignment	B
	45126+04		National Grid	OH Utility Pole (Electric)	Perpendicular	OH electric pole on west side of alignment	B
	45126+50	45129+00	Pan Am	Storm Drainage Pipe/Culvert	Parallel	Parallel Culvert on east side of the alignment	B
	45127+50		Pan Am	Storm Sewer	Perpendicular	Sewer crosses RR Tracks - Combined System for businesses on West side of RR Tracks	B
	45129+60		NYS DOT Albany	UG Utility (Electric)	Perpendicular	Elec Locker	B
	45129+83		Town of Glenville	Sanitary Sewer	Perpendicular	PVC sewer on North side of Freemans Bridge Road	B
	45129+83	45130+55	Town of Glenville	Storm Drainage Pipe/Culvert	Parallel	(2) Parallel CMP Culvert on east side of the alignment	B
	45129+60		National Grid	OH Utility Locker (Electric)	Perpendicular	Electric Locker on east side of the alignment	B
	45129+60	45130+75	National Grid	UG Utility (Electric)	Parallel	Parallel UG Electric on east side of the alignment	B
	45130+00		National Grid	UG Utility (Gas)	Perpendicular	Gas Main located on North side of Freemans Bridge Road	B
	45130+43		Town of Glenville	Water Line	Perpendicular	Water Main located on South side of Freemans Brdige Road	B
	45130+55		Town of Glenville	Sanitary Sewer	Perpendicular	PVC sewer on South side of Freemans Bridge Road	B
	45133+17		CP RR	OH Utility Pole (Electric)	Perpendicular	OH electric pole on west side of alignment	B
	45134+90		CP RR	OH Utility Pole (Electric)	Perpendicular	OH electric pole on east side of alignment	B
	45136+41		CP RR	OH Utility Pole (Electric)	Perpendicular	OH electric pole on east side of alignment	B

tady (Package 4B)	45137+90		CP RR	OH Utility Pole (Electric)	Perpendicular	OH electric pole on east side of alignment	B
	45139+27		CP RR	OH Utility Pole (Electric)	Perpendicular	OH electric pole on east side of alignment	B
	45140+70		CP RR	OH Utility Pole (Electric)	Perpendicular	OH electric pole on east side of alignment	B
	45141+60		Pan Am	Storm Sewer	Perpendicular	Concrete Box Sewer crossing RR Tracks	B
	45145+93		Pan Am	Storm Sewer	Perpendicular	RR Bridge Structure	B
	45164+71		CP RR	OH Utility Pole (Electric)	Perpendicular	OH electric pole on west side of alignment	B
	45178+27	45180+00	Pan Am	Storm Drainage Pipe/Culvert	Parallel	Storm Sewer parallel of alignment but crosses it in one location (45179+00)	B
	45178+27		Pan Am	Storm Drainage Pipe/Culvert	Perpendicular	Stone Box crosses RR Tracks	B
	45178+91		Village of Scotia	Sanitary Sewer	Perpendicular	Storm Sewer crosses the alignmnet	B
	45178+91	45182+00	Village of Scotia	Sanitary Sewer	Parallel	Storm Sewer parallel of alignment but crosses it in two locations (45179+50,45181+00)	B
	45179+19	45179+64	Pan Am	Storm Drainage Pipe/Culvert	Parallel	Culvert crosses the alignment	B
	45179+25		National Grid	OH Utility Pole (Electric)	Perpendicular	OH electric pole on west side of alignment	B
	45179+48		National Grid	OH Utility Line (Electric)	Perpendicular	OH electric crossing RR Tracks	B
	45179+48		National Grid	OH Utility Pole (Electric)	Perpendicular	OH electric pole on west side of alignment	B
	45179+55	45181+00	National Grid	UG Utility (Electric)	Parallel	Underground Utility Electic parallel to alignment	B
	45179+64	45181+45	National Grid	UG Utility (Gas)	Parallel	UG Gas lines and multiple gas valves on west side of the alignment	B
	45179+79		National Grid	UG Utility (Gas)	Perpendicular	(3) pipelines crosses the alignment	B
	45179+68		National Grid	OH Utility Pole (Electric)	Perpendicular	OH electric pole on west side of alignment	B
	45179+96		National Grid	UG Utility (Gas)	Perpendicular	UG gas lines overlaps the alignment	B
	45180+00		Village of Scotia	Storm Drainage Pipe/Culvert	Perpendicular	RCP culvert East of Tracks	B
	45180+00	45181+25	Village of Scotia	Water Line	Parallel	Water Line Parallel to the main alignment	B
	45180+00	45181+40	Pan Am	Storm Drainage Pipe/Culvert	Parallel	RCP Culvert parallel to alignment the alignment	B
	45180+30		National Grid	UG Utility (Gas)	Perpendicular	UG Gas line paralleling HDD and crosses both tracks	B

Segment 7 - Schenectady	45180+55		Village of Scotia	Storm Drainage Pipe/Culvert MH	Perpendicular	RCP sewer with inlets along North side of Northballston Ave	B
	45181+00	45182+30	Village of Scotia	Storm Drainage Pipe/Culvert	Parallel	Parallel RCP culvert East of Tracks	B
	45181+40		Village of Scotia	Storm Sewer	Perpendicular	RCP sewer with inlets along South side of Northballston Ave	B
	45181+44		National Grid	UG Utility (Gas)	Perpendicular	UG Gas line crosses the alignment	B
	45181+69		National Grid	UG Utility (Electric)	Perpendicular	Underground Utiltiy cross alignment	B
	45182+24		Time Warner Cable	OH Utility (Fiber)	Perpendicular	OH Fiber/Communication lines on North side of Northballston Ave	B
	45182+24		Verizon	UG Utility (Telephone)	Perpendicular	(2) UG Telephone lines crossing the alignment	B
	45182+39		Village of Scotia	Storm Drainage Pipe/Culvert	Perpendicular	Catch Basin / Storm structure over alignment, two crossings out	B
	45182+95		Village of Scotia	Storm Drainage Pipe/Culvert	Perpendicular	Catch Basin / Storm structure over alignment, two crossings out	B
	45183+00		National Grid	OH Utility Pole (Electric)	Perpendicular	(2) Check clerance from pole.	B
	45192+40	45196+50	MCI	OH Utility (Fiber)	Parallel	OH Fiber overlaps with the alignment	B
	45192+40		MCI	OH Utility (Fiber)	Perpendicular	OH Fiber crossses the alignment	B
	45194+73		MCI	OH Utility (Fiber)	Perpendicular	OH Fiber crossses the alignment	B
	45196+50		MCI	OH Utility (Fiber)	Perpendicular	OH Fiber crossses the alignment	B
	45196+50	45313+00	MCI	OH Utility (Fiber)	Parallel	OH Fiber overlaps with the alignment	B
	45203+36	45203+94	National Grid	OH Utility Line (Electric)	Parallel	OH electric paralleling alignment and crossing Vley Rd and the main alignment	B
	45203+61		National Grid	OH Utility Line (Electric)	Perpendicular	OH electric crossing the alignment	B
	45203+65		Village of Scotia	Storm Sewer	Perpendicular	Storm sewer and inlets - center of Vley Road	B
	45203+87		Village of Scotia	Storm Sewer	Perpendicular	Storm sewer and inlets - center of Vley Road	B
	45203+91		Village of Scotia	Water Line	Perpendicular	Water Main - center of Vley Road	B
	45203+99		National Grid	OH Utility Line (Electric)	Perpendicular	OH electric crossing on South side of Vley Road	B
	45204+06		Verizon / Time Warner Cable	UG Utility (Telephone)	Perpendicular	UG Telephone running along on the east side of Vley Rd	B
	45207+69		CP RR	OH Utility Pole (Electric)	Perpendicular	OH Electric Pole on east side of alignment	B

	45232+66		National Grid	OH Utility Line (Electric)	Perpendicular	OH Electric line crossing the alignment 45 degree	B
	45234+55	45235+48	National Grid	UG Utility (Electric)	Parallel	Parallel UG Electric on east side of alignment	B
	45234+22		National Grid	UG Utility (Gas)	Perpendicular	UG gas main crossing North of Sacandaga Road	B
	45234+40		Village of Scotia	Water Hydrant	Perpendicular	Water Main - Fire Hydrant	B
	45235+00		Town of Glenville	Sanitary Sewer MH	Perpendicular	Manhole on east side of the alignment	B
	45234+94		National Grid	OH Utility Line (Electric)	Perpendicular	OH electric crossing South of Sacandaga Road	B
	45235+05		Verizon / Time Warner Cable	UG Utility (Telephone)	Perpendicular	(3) UG telephone/communications crossing North of Sacandaga Road	B
	45235+34		National Grid	OH Utility Pole (Electric)	Perpendicular	Pole with OH Electric within 7' off CL	B
	45235+34	45240+00	NYS DOT Albany	OH Utility (Electric)	Parallel	Parallel OH Electric line parallel to the alignment	B
	45235+63	45239+80	Village of Scotia	Storm Drainage Pipe/Culvert	Parallel	Parallel HDPE Storm Drainage on east side of alignment	B
	45283+51		National Grid	UG Utility (Gas Transmission)	Perpendicular	Gas Main crossing RR Tracks in NG Easement	B
	45284+00		National Grid	OH Utility Line (Electric)	Perpendicular	(10) OH transmission lines cross the alignment	B
	45286+50	45313+75	National Grid	OH Utility Line (Electric)	Parallel	OH electric lines paralleling East side of RR Tracks	B
	45285+26		National Grid	UG Utility (Gas Transmission)	Perpendicular	Gas main might cross RR tracks.	B
	45301+30		CSX RR	OH Utility Pole (Electric)	Perpendicular	Pole on east side of alignment	B
	45310+05		National Grid	OH Utility Locker (Electric)	Perpendicular	OH electric Electric Locker on east side of alignment	B
	45313+12		National Grid	OH Utility Line (Electric)	Perpendicular	OH electric Electric crosses the alignment	B
	45314+37		Village of Scotia	Water Line	Perpendicular	Water line crosses the alignment	B
	45315+29		Verizon / Time Warner Cable	UG Utility (Telephone)	Perpendicular	UG telephone/communications crossing the alignment	B
	45315+43		MCI	UG Utility (Fiber)	Perpendicular	UG Fiber crosses the alignment	B
	45315+82		National Grid	OH Utility Line (Electric)	Perpendicular	OH electric lines crossing on North side of Amsterdam Road	B
	45315+90		Village of Scotia	Storm Drainage Pipe/Culvert	Perpendicular	(2) Storm sewer lines on west side of the alignment	B
	45316+02		National Grid	UG Utility (Gas Transmission)	Perpendicular	Gas main might crosses the alignment	B

	45316+25		Town of Glenville	Water Line	Perpendicular	Water Main crossing on South side of Amsterdam Road	B
	45346+70		NYS Thruway Authority	Storm Drainage Pipe/Culvert	Perpendicular	Parallel RCP Pipe on west side of the alignment	B
	45355+00		National Grid	OH Utility (Transmission)	Perpendicular	(2) lines East to west cardinal direction crosses alignment	B
	45355+38		National Grid	OH Utility Line (Electric)	Perpendicular	(2) lines East to west cardinal direction crosses alignment	B
	45387+70		Verizon / Time Warner Cable	UG Utility (Telephone)	Perpendicular	UG telephone/communications crossing the alignment	B
	45389+76		CSX RR	Storm Drainage Pipe/Culvert	Perpendicular	RCP Pipe crossing the alignment	B
	45389+88		CSX RR	Storm Drainage Pipe/Culvert	Perpendicular	RCP Pipe crossing the alignment	B
	45390+20		CSX RR	Storm Drainage Pipe/Culvert	Perpendicular	Culvert Parallel to alignment and within LOW	B
	45393+58		National Grid	UG Utility (Gas Transmission)	Perpendicular	UG Gas transmission line crosses the alignment	B
	45394+42		National Grid	UG Utility (Gas Transmission)	Perpendicular	UG Gas transmission line crosses the alignment	B
	45394+42		National Grid	OH Utility Line (Electric)	Perpendicular	OH transmsion lines Cross with the alignment	B
	45394+70		National Grid	OH Utility Line (Electric)	Perpendicular	(2) OH transmsion lines Cross with the alignment	B
	45395+30		National Grid	OH Utility Line (Electric)	Perpendicular	OH transmsionlines Cross with the alignment	B
	45394+60		CSX RR	Storm Drainage Pipe/Culvert	Perpendicular	Parallel Storm Drainage Pipe on east side of the alignment	B
	45395+31		CSX RR	Storm Drainage Pipe/Culvert	Perpendicular	Culvert close to west side of LOW	B
	45395+61		National Grid	OH Utility Line (Electric)	Perpendicular	OH Electric lines Cross with the alignment	B
	45396+40		National Grid	OH Utility Line (Electric)	Perpendicular	(3) OH Electric lines Crosses with the alignment	B
	45399+80		National Grid	OH Utility Line (Electric)	Perpendicular	(2) OH Electric lines Crosses with the alignment	B
	45401+25		National Grid	OH Utility Line (Electric)	Perpendicular	(2) OH Electric line Crosses with the alignment	B
	45402+51		National Grid	OH Utility Line (Electric)	Perpendicular	(8) OH electric lines Cross with the alignment	B
	45403+07		National Grid	OH Utility Line (Electric)	Perpendicular	OH Electric line Crosses with the alignment	B
	45403+60		National Grid	OH Utility Line (Electric)	Perpendicular	OH Electric line Crosses with the alignment	B
	45403+60		Verizon	OH Utility (Telephone)	Perpendicular	OH telephone and electric crossing RR Tracks	B

	45408+07		National Grid	OH Utility Line (Electric)	Perpendicular	(3) OH electric lines cross with the alignment	B
	45408+45		National Grid	OH Utility Line (Electric)	Perpendicular	(3) OH electric lines cross with the alignment	B
	45416+80		CSX RR	Storm Drainage Pipe/Culvert	Perpendicular	CMP culvert crossing RR Tracks	B
	45434+75		CSX RR	Storm Drainage Pipe/Culvert	Perpendicular	Perpendicular HDPE culvert on east side of the alignment	B
	45450+35		CSX RR	Storm Drainage Pipe/Culvert	Perpendicular	Perpendicular CMP Culvert on west side of the alignment	B
	45451+51		National Grid	OH Utility Line (Electric)	Perpendicular	OH electric line crossing Gordon Road	B
	45451+75		City of Schenectady	Water Line	Perpendicular	Water Main crossing alignment at Gordon Road	B
	45483+13	45486+85	National Grid	OH Utility Line (Electric)	Parallel	Parallel OH electric North of Putnam Road along RR tracks	B
	45482+25		National Grid	OH Utility Pole (Electric)	Perpendicular	Pole on west side of alignment	B
	45484+00		National Grid	OH Utility Pole (Electric)	Perpendicular	OH electric Pole on west side of alignment	B
	45485+40		National Grid	OH Utility Pole (Electric)	Perpendicular	OH electric Pole on west side of alignment	B
	45486+00		National Grid	OH Utility Pole (Electric)	Perpendicular	OH electric Pole on west side of alignment	B
	45486+36		National Grid	UG Utility (Gas)	Perpendicular	UG gas on North side of Putnam Road	B
	45486+70		Town of Rotterdam	Water Line	Perpendicular	Water line on South side of Putnam Road	B
	45486+80		National Grid	OH Utility Line (Electric)	Perpendicular	OH electric on South side of Putnam Road	B

Four separate quality levels of subsurface utility facility information are generally recognized and are as follows:

Quality Level A (QLA): Quality Level A is the highest degree of accuracy. information shown on the plans has been obtained by the actual exposure (or verification of previously exposed and surveyed utility facilities) of subsurface utilities, using (typically) minimally intrusive excavation equipment to determine their precise horizontal and vertical positions, as well as their other utility facility attributes. (Shown as QLA)

Quality Level B (QLB): Quality Level B is the second highest degree of accuracy. The information shown on the plans has been obtained through the application of appropriate surface geophysical methods (i.e., underground cameras, radar, sonar, tone outs, etc.) to identify the existence and appropriate horizontal position of subsurface utility facilities. Quality Level B data are reproducible by surface geophysics at any point of their depiction. The information was surveyed to applicable tolerances and reduced onto the plans. No excavations were performed. (Shown as QLB)

Quality Level C (QLC): Quality Level C is the third highest degree of accuracy. The information shown on the plans has been obtained by surveying and plotting visible above-ground utility features and by using professional judgement in correlating this information to Quality

CONFIDENTIAL -- Not Subject to FOIL

Package 4A (Segment 6) CI Crossing and Road Use and Crossing Agreement (RUA) Status

Utility Owner	Utility Type (Quantity)	Agreement Status/Date	Details	RUA Notes
AT&T	Underground Fiber (5) Overhead Telephone (3)	Documentation showing agreement is in place 9/21/22.	9/20/22 sent CI Owner package, asked for feedback. 9/21/22 received comments from CI Owner on drawings. CI Owner package being updated accordingly. IFC CI Owner final custom format package to be provided.	NA
Century Link Fiber	Underground Fiber (1)	CHPE to provide final custom format plans for CI Owner review and sign off.	CI Owner package is being prepared.	NA
Lumen	Underground Fiber (5)	CHPE to provide final custom format plans for CI Owner review and sign off.	9/20/22 sent CI Owner package, asked for feedback. 10/4/22 received comments from CI Owner on drawings. CI Owner package being updated accordingly. IFC CI Owner final custom format package to be provided.	NA
National Grid	Overhead Transmission (3) Overhead Electric (12) Underground Gas (8)	Biweekly meetings, comments on location and crossings. CHPE to provide final custom format plans for CI Owner review and sign off.	10/11/22 submitted Packages 4A applications and CI Owner packages. 1/5/23 received comments from NG for use in design and revised CI Owner package. 1/11/23 submitted updated CI Owner package. 1/18/23 attended in-person working meeting at National Grid offices in Albany, NY. Conducted approximately 10 virtual meetings with CI owner since January 2023 to discuss engineering details and concerns in all packages occupied by CI Owner. 2/13/23 submitted "NG Land Use Tracker" to SharePoint.	NA

Package 4A (Segment 6) CI Crossing and Road Use and Crossing Agreement (RUA) Status

Utility Owner	Utility Type (Quantity)	Agreement Status/Date	Details	RUA Notes
			<p>3/16/23 received request for additional design information from NG</p> <p>3/31/23 Provided information requested by NG.</p> <p>5/24/23 page turn with CI Owner, DPS and DEC to work through CI Owner comments.</p> <p>IFC CI Owner final custom format package to be provided.</p>	
Time Warner Cable	<p>Overhead Fiber (1)</p> <p>Underground Fiber (1)</p>	CHPE to provide final custom format plans for CI Owner review and sign off.	<p>9/20/22 sent CI Owner package, asked for feedback.</p> <p>9/21/22 received comments from CI Owner on drawings. CI Owner package being updated accordingly.</p> <p>IFC CI Owner final custom format package to be provided.</p>	NA
Verizon	<p>Overhead Telephone (12)</p> <p>Overhead Electric (5)</p> <p>Underground Telephone (2)</p>	CHPE to provide final custom format plans for CI Owner review and sign off.	<p>9/22/22 sent CI Owner package, asked for feedback.</p> <p>10/10/22 sent inquiry regarding whether CI Owner has comments.</p> <p>4/19/23 sent updated CI Owner package and asked for feedback.</p> <p>IFC CI Owner final custom format package to be provided.</p>	NA
Saratoga Country	<p>Storm Drainage Pipe/Culvert (2)</p> <p>Sanitary Sewer (6)</p>	CHPE to provide final custom format plans for CI Owner review and sign off.	<p>9/21/22 sent CI Owner package, asked for feedback.</p> <p>10/14/22 sent inquiry regarding whether CI Owner has comments. Sent additional plan sheets requested by CI Owner.</p> <p>11/10/23 received as-built utility drawings from CI Owner.</p> <p>IFC CI Owner final custom format package to be provided.</p>	Road Use and Crossing Agreement executed on March 22, 2023.
Town of Ballston	Water Line (2)	Road Use and Crossing	9/21/22 sent CI Owner package, asked for feedback.	Road Use and Crossing Agreement under

Package 4A (Segment 6) CI Crossing and Road Use and Crossing Agreement (RUA) Status

Utility Owner	Utility Type (Quantity)	Agreement Status/Date	Details	RUA Notes
		Agreement under Town review.	<p>10/25/22 met with the Town of Ballston Supervisor and their consultant regarding the CHPE alignment, National Grid infrastructure and the town's plans to extend its walking trail from Outlet Road heading north to the Curtis Lumber complex.</p> <p>12/7/22 Draft RUA sent to Town Supervisor and Town Attorney</p> <p>5/8/23 Draft RUA sent to new Town Attorney</p>	review. CHPE team to follow-up with attorney and will meet with Town Supervisor on 7/26 with revised RUA document.
Town of Glenville	Storm Sewer (4)	CI Owner package under Town review.	<p>9/21/22 sent CI Owner package, asked for feedback.</p> <p>10/14/22 sent inquiry regarding whether CI Owner has comments.</p> <p>4/24/23 sent updated CI Owner package.</p> <p>5/4/23 – Discussed easement on town-owned parcel with Town Supervisor.</p>	Crossing Agreement provided to Town (RUA not needed as CHPE not crossing city-owned roads).

Package 4B (Segment 7) and Road Use and Crossing Agreement (RUA) Status

Utility Owner	Utility Type (Quantity)	Agreement Status/Date	Details	RUA
MCI/Verizon business	Underground Fiber (8)	CHPE to provide final custom format plans for CI Owner review and sign off.	<p>9/22/22 sent CI Owner package, asked for feedback.</p> <p>11/2/22 sent updated CI Owner package, asked for feedback.</p> <p>2/10/23 re-sent link to CI Owner package, asked for feedback.</p> <p>3/28/23 re-sent link to CI Owner package, asked for feedback.</p> <p>4/11/23 spoke with CI owner, learned previous contact no longer is an employee. Provided project schedule, requested/received as-built drawings.</p> <p>IFC CI Owner final custom format package to be provided.</p>	NA
National Grid	<p>Overhead Electric (17)</p> <p>Overhead Transmission (9)</p> <p>Underground Gas Transmission (4)</p> <p>Underground Gas (8)</p>	<p>Biweekly meetings, comments on location and crossings.</p> <p>CHPE to provide final custom format plans for CI Owner review and sign off.</p>	<p>12/19/22 submitted Packages 4B applications and CI Owner packages.</p> <p>1/18/23 attended in-person working meeting at National Grid offices in Albany, NY.</p> <p>Conducted approximately 10 virtual meetings with CI owner since January 2023 to discuss engineering details and concerns in all packages occupied by CI Owner.</p> <p>2/13/23 submitted "NG Land Use Tracker" to SharePoint.</p> <p>2/27/23 submitted updated CI Owner package.</p> <p>3/1/23 received comments from NG for use in design and revised CI Owner package.</p> <p>4/28/23 NG submitted stakeholder comments for use in design</p> <p>5/2/23 NG submitted additional stakeholder comments for use in design.</p>	NA

Package 4B (Segment 7) and Road Use and Crossing Agreement (RUA) Status

Utility Owner	Utility Type (Quantity)	Agreement Status/Date	Details	RUA
			<p>5/24/23 page turn with CI Owner, DPS and DEC to work through CI Owner comments.</p> <p>IFC CI Owner final custom format package to be provided.</p>	
Time Warner Cable	<p>Underground Telephone (1)</p> <p>Overhead Fiber (1)</p> <p>Underground Fiber (1)</p>	CHPE to provide final custom format plans for CI Owner review and sign off.	<p>9/20/22 sent CI Owner package, asked for feedback.</p> <p>9/21/22 received comments from CI Owner on drawings. CI Owner package being updated accordingly.</p> <p>IFC CI Owner final custom format package to be provided.</p>	NA
Verizon	<p>Underground Telephone (4)</p> <p>Overhead Telephone (1)</p>	CHPE to provide final custom format plans for CI Owner review and sign off.	<p>11/2/22 sent CI Owner package, asked for feedback.</p> <p>4/10/22 sent updated CI Owner package and asked for feedback.</p> <p>4/20/23 conducted call with CI Owner to discuss alignment design and construction near CI Owner infrastructure.</p> <p>IFC CI Owner final custom format package to be provided.</p>	NA
Town of Rotterdam	Water Line (1)	Road Use and Crossing Agreement under Town review.	<p>9/21/22 sent CI Owner package, asked for feedback.</p> <p>10/14/22 sent inquiry regarding whether CI Owner has comments.</p> <p>3/31/23 RUA team met with Town Attorney to discuss proposed RUA.</p> <p>4/24/23 submitted updated CI Owner package.</p> <p>5/9/23 conducted virtual meeting with Town Engineer to discuss utility interactions.</p> <p>IFC CI Owner final custom format package to be provided.</p>	Road Use and Crossing Agreement under review. CHPE team following-up with Town.
Town of Glenville	Water Line (3)	Crossing Agreement	9/21/22 sent CI Owner package, asked for feedback.	Crossing Agreement

Package 4B (Segment 7) and Road Use and Crossing Agreement (RUA) Status

Utility Owner	Utility Type (Quantity)	Agreement Status/Date	Details	RUA
	Sanitary Sewer (4) Storm Drainage Pipe/Culvert (1)	under review by Town.	10/14/22 sent inquiry regarding whether CI Owner has comments. 4/24/23 submitted updated CI Owner package. 5/4/23 Discussed easement on town-owned parcel with Town Supervisor.	provided to Town (RUA not needed as CHPE not crossing city-owned roads).
City of Schenectady	Water Line (1)	CHPE to provide final custom format plans for CI Owner review and sign off.	9/21/22 sent CI Owner package, asked for feedback. 10/13/22 sent inquiry regarding whether CI Owner has comments. 5/8/23 sent updated CI Owner package, asked for feedback. IFC CI Owner final custom format package to be provided.	RUA not needed as CHPE not crossing city-owned roads or parcels
Schenectady County	Storm Drainage Pipe/Culvert (2)	CHPE to provide final custom format plans for CI Owner review and sign off.	9/23/22 sent CI Owner package, asked for feedback. 9/26/22 received question from town ("It appears that for this leg the transmission line is mostly within railroad right-of-way. Is that correct?"); confirmed correct same day. 4/24/23 sent updated CI Owner package. 2/3/23; 4/21/23; 5/18/23 meetings held with Schenectady County DPW regarding easements and temporary construction access to DPW facility parcel. IFC CI Owner final custom format package to be provided.	County Attorney and CHPE Attorney in communication regarding Road Use Agreement. Kiewit to mark out property line and CHPE team to revisit site to explore spacing. TDI to follow-up with recycler who uses a portion of the DPW yard.
Village of Scotia	Sanitary Sewer (2) Storm Drainage Pipe/Culvert (8) Storm Sewer (3) Water Line (2)	Road Use and Crossing Agreement under Village review.	9/21/22 sent CI Owner package, asked for feedback. 10/14/22 sent inquiry regarding whether CI Owner has comments. 10/14/22 received comment from Village Mayor: "I have no issues or comments that are new. It is just as was originally described for the Village and I firmly	Road Use and Crossing Agreement under review. WSP to follow-up with Village Mayor.

Cole, Benjamin

From: Cole, Benjamin
Sent: Thursday, September 22, 2022 10:00 PM
To: mike.fitzgerald@verizon.com
Subject: CHPE Collocated Infrastructure Details_EM&CP 6, and 7A MCI and Verizon

Good Evening,

I'm writing on behalf of Transmission Developers Inc. ("TDI"), owner of the Champlain Hudson Power Express ("CHPE" or "Project") transmission line project. The purpose of this correspondence is to provide more detailed information related to how the CHPE project is designed to interact with your infrastructure and to solicit feedback from your company regarding the Project's alignment.

As you may recall from previous communications from Rick Chase at TDI, the CHPE is a fully permitted 339-mile underground and underwater high voltage direct current (HVDC) electric transmission line that will import up to 1,250 MW of renewable power from Canada and send it to the New York City metro area (see <https://chpexpress.com> for additional information).

At the link below please find design drawings of the proposed CHPE alignment where it involves your infrastructure within the Segment 6 Environmental Management and Construction Plan ("EM&CP") Packages 6, and 7A.

Link: [Package 6 MCI Co-Located Infrastructure 2022-09-15.pdf](#)

Link: [Package 7A MCI & Verizon Co-Located Infrastructure 2022-09-15.pdf](#)

TDI will be submitting these plans to the New York State Public Service Commission ("PSC") for portions of the Project in the Towns of Bethlehem, Coeymans, New Baltimore, Coxsackie, Athens, and Catskill. This information is a follow-up to previous communications to you providing general project information and typical infrastructure crossing drawings.

Please review the linked information regarding the CHPE alignment relating to your infrastructure and provide concurrence with the Project's cable separation and alignment and any feedback to me (ben.cole@wsp.com) by October 7, 2022. It is important to TDI that the construction and operation of the CHPE project does not interfere with the continued operation of your infrastructure.

To the extent that the CHPE alignment interacts with your infrastructure within future Segment EM&CP submissions, we will provide you with similar drawings in advance of those filings. I look forward to coordinating with you as we finalize the design of the CHPE project.

Sincerely,

Ben Cole
WSP USA, on behalf of TDI


ben.cole@wsp.com

Cole, Benjamin

From: Cole, Benjamin
Sent: Tuesday, March 28, 2023 11:20 AM
To: Stephen.Parretti@verizon.com.
Cc: Fitzgerald, Michael
Subject: FW: CHPE Collocated Infrastructure Details_EM&CP 4B, 6, and 7A MCI Verizon Business

Good Morning,

Please see information and links below to download plans/profiles of the CHPE alignment, where it interacts with Verizon Business/formerly MCI infrastructure in three areas of the Project. Please review the linked information and provide any comments that you may have with regard to how the CHPE project interacts with your infrastructure.

Thank you,

Ben Cole


ben.cole@wsp.com

From: Cole, Benjamin
Sent: Friday, February 10, 2023 12:02 PM
To: Fitzgerald, Michael <mike.fitzgerald@verizon.com>
Subject: RE: CHPE Collocated Infrastructure Details_EM&CP 4B, 6, and 7A MCI Verizon Business

Hi Mr. Fitzgerald,

Please find new links to download the information previously provided and let me know if you have comments or would like to have a call with the CHPE team. We are trying to gather all comments on Package 4B currently.

[Verizon Bus MCI Pckg 4B](#)

[Verizon Bus MCI Pckg 6](#)

[Verizon Bus MCI Pckg 7A](#)

Thank You,

Ben Cole


ben.cole@wsp.com

From: Cole, Benjamin
Sent: Wednesday, November 2, 2022 4:07 PM
To: Fitzgerald, Michael <mike.fitzgerald@verizon.com>
Subject: CHPE Collocated Infrastructure Details_EM&CP 4B, 6, and 7A MCI Verizon Business

Good Afternoon Mr. Fitzgerald,

I'm writing on behalf of Transmission Developers Inc. ("TDI"), owner of the Champlain Hudson Power Express ("CHPE" or "Project") transmission line project. The purpose of this correspondence is to provide more detailed information related to how the CHPE project is designed to interact with your infrastructure and to solicit feedback from your company regarding the Project's alignment.

The CHPE is a fully permitted 339-mile underground and underwater high voltage direct current (HVDC) electric transmission line that will import up to 1,250 MW of renewable power from Canada and send it to the New York City metro area (see <https://chpexpress.com> for additional information).

At the links below please find design drawings of the proposed CHPE alignment where it involves your infrastructure within the Segment 6 Environmental Management and Construction Plan ("EM&CP") Packages 4B, 6, and 7A.

Links:

[Package 4B MCI Co-Located Infrastructure Package 2022-10-31.pdf](#)

[Package 6 MCI Co-Located Infrastructure 2022-09-15.pdf](#)

[Package 7A MCI Co-Located Infrastructure Package 2022-10-31.pdf](#)

TDI will be submitting these plans to the New York State Public Service Commission ("PSC") for portions of the Project in your area. This information is a follow-up to previous communications to you providing general project information and typical infrastructure crossing drawings.

Please review the linked information regarding the CHPE alignment relating to your infrastructure and provide concurrence with the Project's cable separation and alignment and any feedback to me (ben.cole@wsp.com) by November 16, 2022. It is important to TDI that the construction and operation of the CHPE project does not interfere with the continued operation of your infrastructure.

To the extent that the CHPE alignment interacts with your infrastructure within future Segment EM&CP submissions, we will provide you with similar drawings in advance of those filings. I look forward to coordinating with you as we finalize the design of the CHPE project.

Sincerely,



Ben Cole, PG

Lead Consultant

Professional Geologist*

*AR, DE, GA, IL, KY, NC, NY, PA

ben.cole@wsp.com

WSP USA

40 La Riviere Drive, Suite 320

Buffalo, New York 14202

wsp.com

Cole, Benjamin

From: Cole, Benjamin
Sent: Monday, April 10, 2023 3:32 PM
To: sean.murphy@verizon.com; steven.paretti@verizon.com; mike.yancey@verizon.com
Cc: Hill, Nathaniel RT (Nate); Scaia-Harbinger, Elaine M
Subject: FW: CHPE Collocated Infrastructure Details_EM&CP 4B, 6, and 7A MCI Verizon Business
Attachments: FW E Champlain Hudson Power Express and VzB Infrastructure_2 (1).msg

Importance: High

Good Afternoon Sean, All,

I'm reaching out to see if Verizon Business has feedback/comments on the updated plan/profile drawings provided at the following link:

[CHPE-SUB-0093.03-00-MCI - CI Owner Package - 4B - 03-13-2023.pdf](#)

The CHPE design is moving toward completion and we are very much interested in feedback and comments regarding how the CHPE transmission lines are proposed to interact with your assets.

Please review the information at the link and provide any comments that you may have at your earliest convenience.

Please see information at the bottom of this thread for background.

Thank You,

Ben Cole


ben.cole@wsp.com

From: Cole, Benjamin
Sent: Monday, April 10, 2023 3:16 PM
To: Fitzgerald, Michael <mike.fitzgerald@verizon.com>
Cc: m.yancey1@verizon.com; Stephen.Parretti@verizon.com; Hill, Nathaniel RT (Nate) <nathaniel.hill@verizon.com>; Grassi, Laura <Laura.Grassi@wsp.com>
Subject: RE: CHPE Collocated Infrastructure Details_EM&CP 4B, 6, and 7A MCI Verizon Business

Hi Mr. Fitzgerald,

At the following link please find the current CHPE plan/profile where the Project interacts with Verizon Business/MCI assets.

[CHPE-SUB-0093.03-00-MCI - CI Owner Package - 4B - 03-13-2023.pdf](#)

I have not seen feedback from Verizon Business, other than an exchange between you and Rick Chase in early 2022 (Rick has retired).

Please provide any feedback or comments that you may have with respect to the interactions depicted in the drawings as the Project moves toward design completion.

Please let me know if you have feedback on the plan/profile set available at the link.

Thank You,

Ben Cole

ben.cole@wsp.com

From: Cole, Benjamin

Sent: Friday, February 10, 2023 12:02 PM

To: Fitzgerald, Michael <mike.fitzgerald@verizon.com>

Subject: RE: CHPE Collocated Infrastructure Details_EM&CP 4B, 6, and 7A MCI Verizon Business

Hi Mr. Fitzgerald,

Please find new links to download the information previously provided and let me know if you have comments or would like to have a call with the CHPE team. We are trying to gather all comments on Package 4B currently.

[Verizon Bus MCI Pckg 4B](#)

[Verizon Bus MCI Pckg 6](#)

[Verizon Bus MCI Pckg 7A](#)

Thank You,

Ben Cole

ben.cole@wsp.com

From: Cole, Benjamin

Sent: Wednesday, November 2, 2022 4:07 PM

To: Fitzgerald, Michael <mike.fitzgerald@verizon.com>

Subject: CHPE Collocated Infrastructure Details_EM&CP 4B, 6, and 7A MCI Verizon Business

Good Afternoon Mr. Fitzgerald,

I'm writing on behalf of Transmission Developers Inc. ("TDI"), owner of the Champlain Hudson Power Express ("CHPE" or "Project") transmission line project. The purpose of this correspondence is to provide more detailed information related to how the CHPE project is designed to interact with your infrastructure and to solicit feedback from your company regarding the Project's alignment.

The CHPE is a fully permitted 339-mile underground and underwater high voltage direct current (HVDC) electric transmission line that will import up to 1,250 MW of renewable power from Canada and send it to the New York City metro area (see <https://chpexpress.com> for additional information).

At the links below please find design drawings of the proposed CHPE alignment where it involves your infrastructure within the Segment 6 Environmental Management and Construction Plan ("EM&CP") Packages 4B, 6, and 7A.

Links:

[Package 4B MCI Co-Located Infrastructure Package 2022-10-31.pdf](#)

[Package 6 MCI Co-Located Infrastructure 2022-09-15.pdf](#)

[Package 7A MCI Co-Located Infrastructure Package 2022-10-31.pdf](#)

TDI will be submitting these plans to the New York State Public Service Commission (“PSC”) for portions of the Project in your area. This information is a follow-up to previous communications to you providing general project information and typical infrastructure crossing drawings.

Please review the linked information regarding the CHPE alignment relating to your infrastructure and provide concurrence with the Project’s cable separation and alignment and any feedback to me (ben.cole@wsp.com) by November 16, 2022. It is important to TDI that the construction and operation of the CHPE project does not interfere with the continued operation of your infrastructure.

To the extent that the CHPE alignment interacts with your infrastructure within future Segment EM&CP submissions, we will provide you with similar drawings in advance of those filings. I look forward to coordinating with you as we finalize the design of the CHPE project.

Sincerely,



Ben Cole, PG

Lead Consultant

Professional Geologist*

*AR, DE, GA, IL, KY, NC, NY, PA

ben.cole@wsp.com

WSP USA

40 La Riviere Drive, Suite 320

Buffalo, New York 14202

wsp.com

Cole, Benjamin

From: Parretti, Stephan R <stephen.parretti@verizon.com>
Sent: Wednesday, April 12, 2023 10:06 AM
To: Cole, Benjamin
Subject: Re: [E] RE: CHPE Collocated Infrastructure Details_EM&CP 4B, 6, and 7A MCI Verizon Business
Attachments: 005752-01 Vol 2 (1).pdf

Ben ,

The attached should cover the Cocksackie to Kingston area

On Tue, Apr 11, 2023 at 4:08 PM Cole, Benjamin <Ben.Cole@wsp.com> wrote:

Hi again Steve,

Please see the most recent plan/profile for package 7A at the link.

[CHPE-SUB-0114.04-00-MCI - CI Owner Package - 7A - 03-21-2023.pdf](#)

Updated Package 6 is not yet available but expected to be soon. I'll forward that when it is.

Thanks,

Ben Cole



ben.cole@wsp.com

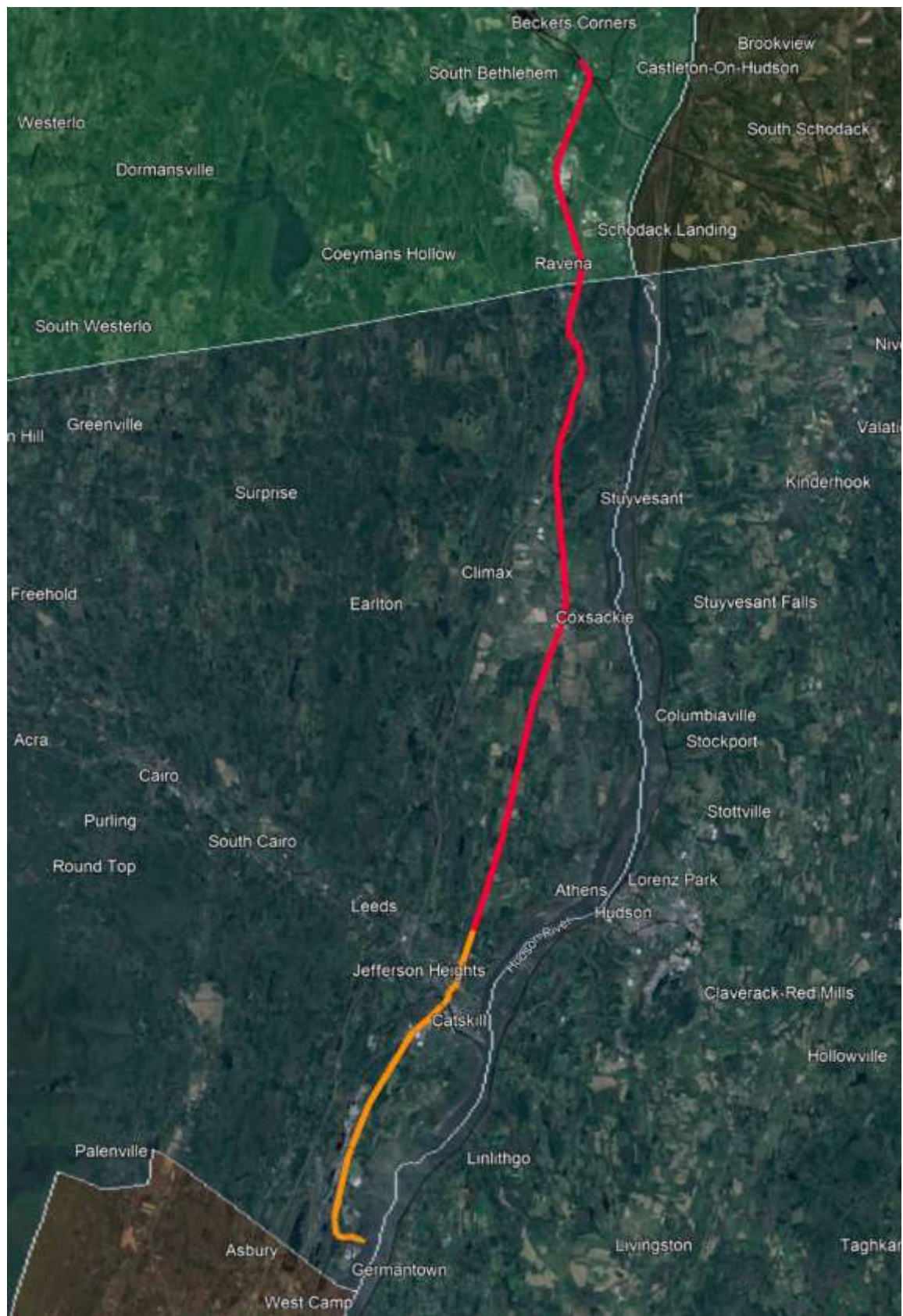
From: Cole, Benjamin
Sent: Tuesday, April 11, 2023 4:01 PM
To: 'Parretti, Stephan R' <stephen.parretti@verizon.com>
Subject: RE: [E] RE: CHPE Collocated Infrastructure Details_EM&CP 4B, 6, and 7A MCI Verizon Business

Hi Steve,

I just heard back from the design team with a followup question.

Looks like what you provided (thank you again) covers facilities generally located from Glenville (CHPE Package 4A) through Rotterdam (north end of CHPE Package 5A).

Are there drawings/information available for facilities in CHPE Packages 6 and 7A (south end of Albany County through South end of Greene County; please see below: red = Package 6, Orange = Package 7A)?



Thanks,

Ben Cole

[REDACTED]

ben.cole@wsp.com

From: Cole, Benjamin
Sent: Tuesday, April 11, 2023 12:54 PM
To: Parretti, Stephan R <stephen.parretti@verizon.com>
Subject: RE: [E] RE: CHPE Collocated Infrastructure Details_EM&CP 4B, 6, and 7A MCI Verizon Business

Great. Thanks again Steve. Will do.

Ben Cole

[REDACTED]

ben.cole@wsp.com

From: Parretti, Stephan R <stephen.parretti@verizon.com>
Sent: Tuesday, April 11, 2023 12:27 PM
To: Cole, Benjamin <Ben.Cole@wsp.com>
Subject: Re: [E] RE: CHPE Collocated Infrastructure Details_EM&CP 4B, 6, and 7A MCI Verizon Business

Ben,

Please see attached asbuilts. Let me know if you have any questions.

On Tue, Apr 11, 2023 at 11:08 AM Cole, Benjamin <Ben.Cole@wsp.com> wrote:

Hi Steve,

Glad to speak with you! Noting for my benefit when search in the future, number is [REDACTED]

As discussed, please find attached draft schedule. Verizon Business appears to be located in CHPE design packages 4B, 6 and 7A.

Looking forward to any as-built drawings you can provide.

Thank you,

Ben Cole

[REDACTED]

ben.cole@wsp.com

From: Cole, Benjamin
Sent: Tuesday, April 11, 2023 8:58 AM
To: Parretti, Stephan R <stephen.parretti@verizon.com>
Cc: Fitzgerald, Michael <mike.fitzgerald@verizon.com>; m.yancey1@verizon.com; Hill, Nathaniel RT (Nate) <nathaniel.hill@verizon.com>; Grassi, Laura <Laura.Grassi@wsp.com>
Subject: RE: [E] RE: CHPE Collocated Infrastructure Details_EM&CP 4B, 6, and 7A MCI Verizon Business

Hi Steve,

I just tried calling a couple times but am getting a message 'the number you dialed is not in service.' I've triple checked and am dialing [REDACTED] Is there another number available? Please give me a call if not because I am not able to get through. My number is [REDACTED]

Thank you!

Ben

From: Cole, Benjamin
Sent: Tuesday, April 11, 2023 8:53 AM
To: Parretti, Stephan R <stephen.parretti@verizon.com>
Cc: Fitzgerald, Michael <mike.fitzgerald@verizon.com>; m.yancey1@verizon.com; Hill, Nathaniel RT (Nate) <nathaniel.hill@verizon.com>; Grassi, Laura <Laura.Grassi@wsp.com>
Subject: RE: [E] RE: CHPE Collocated Infrastructure Details_EM&CP 4B, 6, and 7A MCI Verizon Business

Thank you Sir! Will call momentarily.

Ben Cole



ben.cole@wsp.com

From: Parretti, Stephan R <stephen.parretti@verizon.com>
Sent: Tuesday, April 11, 2023 8:51 AM
To: Cole, Benjamin <Ben.Cole@wsp.com>
Cc: Fitzgerald, Michael <mike.fitzgerald@verizon.com>; m.yancey1@verizon.com; Hill, Nathaniel RT (Nate) <nathaniel.hill@verizon.com>; Grassi, Laura <Laura.Grassi@wsp.com>
Subject: Re: [E] RE: CHPE Collocated Infrastructure Details_EM&CP 4B, 6, and 7A MCI Verizon Business

Ben,

Mike Fitzgerald is no longer with Verizon Business. Please give me a call on the project when you have a chance.

Thanks

Steve P

--

OSP Sr. Engineer

82B Northside Rd. PO Box 600

Charlton, MA. 01507

[REDACTED]

--

OSP Sr. Engineer

82B Northside Rd. PO Box 600

Charlton, MA. 01507

[REDACTED]

NOTICE: This communication and any attachments ("this message") may contain information which is privileged, confidential, proprietary or otherwise subject to restricted disclosure under applicable law. This message is for the sole use of the intended recipient(s). Any unauthorized use, disclosure, viewing, copying, alteration, dissemination or distribution of, or reliance on, this message is strictly prohibited. If you have received this message in error, or you are not an authorized or intended recipient, please notify the sender immediately by replying to this message, delete this message and all copies from your e-mail system and destroy any printed copies.

-LAEmHhHzdJzBITWfa4Hgs7pbKI

--

OSP Sr. Engineer

82B Northside Rd. PO Box 600

Charlton, MA. 01507

[REDACTED]

Cole, Benjamin

From: Cole, Benjamin
Sent: Monday, December 19, 2022 7:36 AM
To: Bridget.Grabner@nationalgrid.com
Cc: Timothy.Dzimian@nationalgrid.com; Aspinall, Pamela; Rick Chase
Subject: CHPE National Grid PTR Applications for Packages 3, 4B, and 6

Good Morning Bridget,

The links below direct to PTR Applications for Champlain Hudson Power Express Packages 3, 4B and 6. These segments of the transmission line includes the Towns of Fort Edward, Moreau, Northumberland, Wilton, Saratoga, and Milton in Washington and Saratoga Counties (Package 3); the Towns of Glenville and Rotterdam in Schenectady County (Package 4B); and the Towns of Bethlehem, Coeymans, New Baltimore, Coxsackie, and Athens in Albany and Greene Counties (Package 6). The applications incorporate the items on the Land Use Application Checklist and includes in-progress plans and profiles for interactions with National Grid overhead and underground electric and underground gas infrastructure. As we've discussed, your review of these in-progress plans will ensure proper interactions with your infrastructure and will give CHPE the opportunity to confirm that the design provides adequate protections, and allows for necessary design changes based on your review prior to plans being submitted to the Public Service Commission for approval.

Links:

[Segment 4 and 5 Package 3](#)

[Segment 7 Package 4B](#)

[Segment 10 Package 6](#)

Please note the links expires in 60 days.

We are currently finalizing aeriels for a small number of locations and will upload final versions as soon as they are available. As previously discussed, the designers continue revising the matrices that are found at the beginning of each plan/profile set to make it easier for reviewers to locate the interactions in the drawing sets. We'll upload those as soon as available, but, in the interest of expediency, want to make the plans available to National Grid now.

Thank you for your attention to this matter, and please let me know if anything else is needed.

Ben Cole



ben.cole@wsp.com

Cole, Benjamin

From: Grassi, Laura
Sent: Monday, February 27, 2023 10:55 AM
To: Schlegel, Jennifer; Graber, Bridget; Aspinall, Pamela; Dzimian, Timothy S.
Cc: Cole, Benjamin; Rick Chase; chpedoccontrol@portal3.pbid.com; Chess, Dwayne; Delarosa, Erik R.
Subject: CHPE Updated Plan & Profiles: Packages 3, 4B, 6

Good Morning,

Updated plans and profiles for CHPE packages 3, 4B and 6 have been uploaded and are available at the respective links below:

[Segs 4 and 5 Package 3 Plan Profile](#)

[Seg 7 Package 4B Plan and Profile](#)

[Seg 10 Package 6 Plan and Profile](#)

Regards,
Laura



Laura Grassi, P.E.

Senior Consultant, Environmental Engineer



Email: laura.grassi@wsp.com

WSP USA Inc.
40 La Riviere Dr., Ste. 320
Buffalo, NY 14202

wsp.com

Cole, Benjamin

From: Graber, Bridget <Bridget.Graber@nationalgrid.com>
Sent: Tuesday, May 2, 2023 5:56 PM
To: Cole, Benjamin; Grassi, Laura; Dzimian, Timothy S.; Schlegel, Jennifer; Aspinall, Pamela; De La Rosa, Marlo; Marron, Nicole E
Cc: Chess, Dwayne; Delarosa, Erik R.; Guman-Giurgi, Janet; Wietfeldt, Heather; chpedoccontrol@portal3.pbid.com; Michael Main; Stephen Rutkey; Kunle Kafi; Grassi, Laura; Kelli Capka (KC Engineering-NYC); Graber, Bridget
Subject: CHPE Package 4B access road through NG - responses from stakeholders
Attachments: CHPE_S7_P4B_NG_Access Gas Impact.pdf

Follow Up Flag: Follow up
Flag Status: Flagged

Good afternoon,

I received the following comments from other stakeholders:

(From KC)

National Grid has 2 transmission pipelines in part of the access road which CHPE is requesting use of. Gas Transmission Engineering will agree to allow use of the access roads requested if the following conditions to protect the gas transmission pipelines are implemented by CHPE:

- No grading or changing of the existing surface conditions
- The use of 8"x8" (or greater) timber mats to create a continuous travel surface in the area or the gas transmission pipelines
- The installation of orange construction snow fence across the right-of-way to mark and indicate areas where CHPE activities are prohibited

I have indicated by the wide yellow line the approximate location of the gas transmission pipelines on the attached PDF, actual locations need to be verified by electronic instrument markout by National Grid on the attached document.

From Environmental:

- Wetland delineation must be completed by CHPE prior to use, mapping and files to be provided to National Grid.
- Delineated Wetlands must be protected.
- Any storage or use in front of existing tanks is not permitted.
- CHPE is to acknowledge that tanks may be removed during their use of the ROW and adjacent construction and National Grid has the right to limit access due to removal work.
- No grading is allowed.
- No spoils from National Grid ROWs to be removed.
- CHPE to provide photo or video documentation of ROW before construction. After use is complete a site visit is required by National Grid Licensing and Permitting Representative.
- All disturbed areas on National Grid ROW must be restored to pre-construction conditions at the completion of work. Appropriate erosion and sediment controls are required during use of ROW, but shall not impeded nor interfere with the electric transmission line facilities or ROW access/drainage.
- CHPE shall use appropriate measures to control fugitive dust emissions from use of the ROW.
- No access is permitted beyond structures 713/288 and Rotterdam -Schoharie crossing due to habitat.
- National Grid must be provided copy of MS4 approval of SWPPP showing this access.
- National Grid to be copied on SWPPP inspections. Any water quality violations on our ROW may be subject to a stop work order.

- In the event of a release of oil/hazardous material to the environment in the National Grid ROW, CHPE shall be responsible for making all required notifications to regulatory agencies in the required time frame to ensure that the release is properly responded to, including the cleanup and disposal of waste materials, in accordance with all regulatory requirements. All releases must be reported to National Grid.

Bridget Graber, M.A.

Consulting Land Agent
Right of Way and Survey Engineering
nationalgrid | [Business Services](#)

Bridget.Graber@nationalgrid.com

1125 Broadway, Albany New York 12204
[nationalgrid.com](#) | [Twitter](#) | [LinkedIn](#) | [Facebook](#)

Please consider the environment before printing this email.

From: Graber, Bridget Bridget.Graber@nationalgrid.com

Sent: Friday, April 28, 2023 10:34 AM

To: Cole, Benjamin Ben.Cole@wsp.com; Grassi, Laura Laura.Grassi@wsp.com; Dzimian, Timothy S. Timothy.Dzimian@nationalgrid.com; Schlegel, Jennifer Jennifer.Schlegel@nationalgrid.com; Aspinall, Pamela Pamela.Aspinall@nationalgrid.com; De La Rosa, Marlo Marlo.DeLaRosa@nationalgrid.com; Marron, Nicole E Nicole.Marron@nationalgrid.com

Cc: Chess, Dwayne Dwayne.Chess@wsp.com; Delarosa, Erik R. Erik.Delarosa@wsp.com; Guman-Giurgi, Janet Janet.Guman-Giurgi@wsp.com; Wietfeldt, Heather Heather.Wietfeldt@wsp.com; chpedoccontrol@portal3.pbid.com; Michael Main michael.main@transmissiondevelopers.com; Stephen Rutkey stephen.rutkey@transmissiondevelopers.com; Kunle Kafi Ayokunke.Kafi@transmissiondevelopers.com; Grassi, Laura Laura.Grassi@wsp.com; Kelli Capka (KC Engineering-NYC) kcapka@kcepc.com; Graber, Bridget Bridget.Graber@nationalgrid.com

Subject: CHPE Package 4B access road through NG - responses from stakeholders

Good morning,

I received the following comments back from the stakeholders regarding 4B.

Please see the questions that are highlighted.

Is the plan to create a road / walking path in the ROW corridor? (from SR)

1. No lights are to be installed in the National Grid corridor without specific approval from National Grid. Typically, light poles are forbidden. Bollard lights may be allowed
2. No excavations in the National Grid corridor are allowed that would create ponding and eventually a wetland. Any created wetlands by the applicant may result in required mitigation to be paid for by the applicant
3. No fill shall be installed in the National Grid corridor. If approved, the fill material shall be from an Approved borrow site. At no time shall unapproved borrow be dumped on National Grid property. If unapproved material is placed in the National Grid corridor, it will be removed and the applicant charged

4. No dumping of waste is allowed in the National Grid corridor. Removal of any waste will be performed by National Grid and charged back to the applicant
5. Any work performed by the contractor in the National Grid corridor shall be overseen by National Grid. Reimbursement for inspection may be required
6. Any excavations allowed by National Grid shall be OSHA compliant
7. No excavation closer than 20-ft to any National Grid structure, including structures and anchors
8. No filling near a structure unless approved by National Grid
9. If crossing the National Grid corridor is required. Cross perpendicular near a structure but not closer than 20-ft to a structure
10. No temporary stockpiling of material in the National Grid corridor is allowed
11. Trucks are not allowed to stop in the National Grid corridor to unload, load, install or remove tarps. Absolutely no installation or removal of straps under conductors
12. If in the National Grid corridor a wire is discovered, notify National Grid ASAP as this could be part of a grounding system between structures. Do not touch - treat as energized
13. National Grid and their contractors and consultants shall have unrestricted access to the National Grid corridor 24/7
14. Any modifications made to the National Grid corridor that reduces National Grids vertical or horizontal electrical clearances and results in required structure modifications will be the financial responsibility of the applicant
15. If parking is allowed in the National Grid corridor. Islands and or bollards shall be placed around structures. Such shall be approved by the company
16. Any metallic fences or guiderails placed in the National Grid corridor shall be grounded in accordance with National Grid requirements.

(From BH) - If there is an access road being constructed along this path, then CHPE should submit engineered plans. In addition, the route should be surveyed. We would need to review the following:

- Surveyed locations of all utilities on the corridor including electric structure locations and numbers, including location of overhead conductors in plan view with respect to the access road. All underground facilities will need to be marked-out, surveyed, and also shown on the base map
- Any roads under conductors will need a wire height survey
- Details of the proposed road construction (thickness, fill type, etc.)
- Construction activities along the corridor will need to meet, at a minimum, OSHA 1926.1408 requirements for power line safety. This includes electrically qualified spotter and demarcating boundaries such as flags or range controlling warning devices. I would suggest a minimum working clearance of 20-ft. from 115 kV lines.
- All submittals will need to be prepared by licensed design professionals

Environmental Comments: (From MM)

- Wetland delineation must be completed by CHPE prior to use, mapping and files to be provided to National Grid.
- Delineated Wetlands must be protected.
- Any storage or use in front of existing tanks is not permitted.
- CHPE is to acknowledge that tanks may be removed during their use of the ROW and adjacent construction and National Grid has the right to limit access due to removal work.
- No grading is allowed.
- No spoils from National Grid ROWs to be removed.
- CHPE to provide photo or video documentation of ROW before construction. After use is complete a site visit is required by National Grid Licensing and Permitting Representative.
- All disturbed areas on National Grid ROW must be restored to pre-construction conditions at the completion of work. Appropriate erosion and sediment controls are required during use of ROW, but shall not impeded nor interfere with the electric transmission line facilities or ROW access/drainage.
- CHPE shall use appropriate measures to control fugitive dust emissions from use of the ROW.
- No access is permitted beyond structures 713/288 and Rotterdam -Schoharie crossing due to habitat.
- National Grid must be provided copy of MS4 approval of SWPPP showing this access.

- National Grid to be copied on SWPPP inspections. Any water quality violations on our ROW may be subject to a stop work order.
- In the event of a release of oil/hazardous material to the environment in the National Grid ROW, CHPE shall be responsible for making all required notifications to regulatory agencies in the required time frame to ensure that the release is properly responded to, including the cleanup and disposal of waste materials, in accordance with all regulatory requirements. All releases must be reported to National Grid.

Thank you!

Bridget

Bridget Graber, M.A.

Consulting Land Agent

Right of Way and Survey Engineering

nationalgrid | [Business Services](#)

Bridget.Graber@nationalgrid.com

1125 Broadway, Albany New York 12204

nationalgrid.com | [Twitter](#) | [LinkedIn](#) | [Facebook](#)

Please consider the environment before printing this email.

From: Cole, Benjamin <Ben.Cole@wsp.com>

Sent: Wednesday, April 26, 2023 9:22 AM

To: Grassi, Laura <Laura.Grassi@wsp.com>; Dzimian, Timothy S. <Timothy.Dzimian@nationalgrid.com>; Graber, Bridget <Bridget.Graber@nationalgrid.com>; Schlegel, Jennifer <Jennifer.Schlegel@nationalgrid.com>; Aspinall, Pamela <Pamela.Aspinall@nationalgrid.com>; De La Rosa, Marlo <Marlo.DeLaRosa@nationalgrid.com>; Marron, Nicole E <Nicole.Marron@nationalgrid.com>

Cc: Chess, Dwayne <Dwayne.Chess@wsp.com>; Delarosa, Erik R. <Erik.Delarosa@wsp.com>; Guman-Giurgi, Janet <Janet.Guman-Giurgi@wsp.com>; Wietfeldt, Heather <Heather.Wietfeldt@wsp.com>; chpedoccontrol@portal3.pbid.com; Michael Main <michael.main@transmissiondevelopers.com>; Stephen Rutkey <stephen.rutkey@transmissiondevelopers.com>; Kunle Kafi <Ayokunke.Kafi@transmissiondevelopers.com>; Grassi, Laura <Laura.Grassi@wsp.com>; Kelli Capka (KC Engineering-NYC) <kcapka@kcepc.com>

Subject: [EXTERNAL] RE: CHPE Package 4B access road through NG

CAUTION: This email originated from outside of the organisation. Do not click links or open attachments unless you recognise the sender and know the content is safe. If you suspect this email is malicious, please use the 'Report Phish' button.

As discussed – please send to NG stakeholders for review and comment.

Thanks,

Ben

From: Grassi, Laura <Laura.Grassi@wsp.com>

Sent: Monday, April 17, 2023 3:05 PM

To: Dzimian, Timothy S. <Timothy.Dzimian@nationalgrid.com>; Graber, Bridget <Bridget.Graber@nationalgrid.com>;

Schlegel, Jennifer <Jennifer.Schlegel@nationalgrid.com>; Aspinall, Pamela <Pamela.Aspinall@nationalgrid.com>;
Marlo.DeLaRosa@nationalgrid.com; Nicole.Marron@nationalgrid.com
Cc: Cole, Benjamin <Ben.Cole@wsp.com>; Chess, Dwayne <Dwayne.Chess@wsp.com>; Delarosa, Erik R.
<Erik.Delarosa@wsp.com>; Guman-Giurgi, Janet <Janet.Guman-Giurgi@wsp.com>; Wietfeldt, Heather
<Heather.Wietfeldt@wsp.com>; chpedoccontrol@portal3.pbid.com
Subject: FW: CHPE Package 4B access road through NG

Hi All,

Please see the requested sketch of the proposed access route through the Rotterdam substation and the list of equipment proposed for use in the area. Please provide feedback on the proposed route and equipment.

Regards,
Laura

From: Kelli Capka (KC Engineering-NYC) <kcapka@kcepc.com>
Sent: Monday, April 17, 2023 1:26 PM
To: Cole, Benjamin <Ben.Cole@wsp.com>
Cc: Mark.Swallow <Mark.Swallow@kiewit.com>; Matthew.Wetzel <matthew.wetzel@kiewit.com>; Douglas.Kusuke
<douglas.kusuke@kiewit.com>; Tylor.Bottorff <Tylor.Bottorff@kiewit.com>; Justine.Rojas <Justine.Rojas@Kiewit.com>
Subject: CHPE Package 4B access road through NG

Hi Ben,

Following up from last week's discussion with National Grid, they had requested a sketch of our proposed access route through the Rotterdam Substation in Segment 7/Package 4B. We are seeking their feedback on the feasibility of using this route to access our splice and HDD work areas so we can avoid the nature preserve on the Town of Rotterdam parcel shown in the exhibit. I am also attaching a list of equipment that is proposed to use this route. Please share this with them.

Thanks,

Kelli L Capka, PE, PTOE, ENV SP
Senior Associate/Project Manager
KC Engineering and Land Surveying, P.C.
7 Penn Plaza, Suite 1604, New York, NY 10001-3976
[REDACTED]
kcapka@kcepc.com

NOTICE: This communication and any attachments ("this message") may contain information which is privileged, confidential, proprietary or otherwise subject to restricted disclosure under applicable law. This message is for the sole use of the intended recipient(s). Any unauthorized use, disclosure, viewing, copying, alteration, dissemination or distribution of, or reliance on, this message is strictly prohibited. If you have received this message in error, or you are not an authorized or intended recipient, please notify the sender immediately by replying to this message, delete this message and all copies from your e-mail system and destroy any printed copies.

-LAEmHhHzdJzBITWfa4Hgs7pbKl

This e-mail, and any attachments are strictly confidential and intended for the addressee(s) only. The content may also contain legal, professional or other privileged information. If you are not the intended recipient, please notify the sender

immediately and then delete the e-mail and any attachments. You should not disclose, copy or take any action in reliance on this transmission.

You may report the matter by contacting us via our [UK Contacts Page](#) or our [US Contacts Page](#) (accessed by clicking on the appropriate link)

Please ensure you have adequate virus protection before you open or detach any documents from this transmission. National Grid plc and its affiliates do not accept any liability for viruses. An e-mail reply to this address may be subject to monitoring for operational reasons or lawful business practices.

For the registered information on the UK operating companies within the National Grid group please use the attached link: <https://www.nationalgrid.com/group/about-us/corporate-registrations>

Cole, Benjamin

From: Hanford, Madeline
Sent: Monday, February 13, 2023 11:38 AM
To: Schlegel, Jennifer
Cc: Dzimian, Timothy S.; Aspinall, Pamela; Cole, Benjamin; Graber, Bridget; Rick Chase; Grassi, Laura; Gibson, Robert
Subject: RE: [EXTERNAL] CHPE Example Revised Utility Matrix

Jen,

A new table has been added to the National Grid Dropbox on the FTP site located here: [CHPE National Grid Land Needs](#). This table includes a complete list of properties that CHPE will be interacting with for permanent and temporary land uses from Segment 1, Package 1A through Segment 10, Package 6. Parcels owned by National Grid are highlighted in blue. As discussed in our call, please review the table with your team and complete Column N "National Grid Has Rights? (Yes/No)." After your team's review is complete, entries that your team indicate as "Yes" in Column N, CHPE will provide acquisition statuses in Column O and P. We also can provide the land use exhibits that were provided to the specific property owners. Please note that the entries in this table are subject to change as the designs are still being advanced.

Please confirm that this table has the appropriate information and also advise when you think your team's review will be complete.

Thanks,



Madeline Hanford, EIT

Consultant, Environmental Engineer



Email: maddy.hanford@wsp.com

40 La Riviere Dr., Ste. 320

Buffalo, NY 14202

wsp.com

From: Hanford, Madeline
Sent: Tuesday, February 7, 2023 5:51 PM
To: Schlegel, Jennifer <Jennifer.Schlegel@nationalgrid.com>
Cc: Dzimian, Timothy S. <Timothy.Dzimian@nationalgrid.com>; Aspinall, Pamela <Pamela.Aspinall@nationalgrid.com>; Cole, Benjamin <Ben.Cole@wsp.com>; Graber, Bridget <Bridget.Graber@nationalgrid.com>; Rick Chase <rick.chase@transmissiondevelopers.com>; Grassi, Laura <Laura.Grassi@wsp.com>
Subject: RE: [EXTERNAL] CHPE Example Revised Utility Matrix

Jen,

Thank you for providing some clarification on our call this afternoon. WSP is going to add our "master list" of land rights we need for the project to the Land Use Table for Tracking rather than what we added to the matrices. I will include a column labeled "National Grid Has Rights" for your team to populate with Yes/No as they review the parcel number and landowner information. Once the parcels that NG has rights on are identified, we can move forward with identifying the acquisition status of those parcels.

This updated table will be provided to your team no later than Fri, Feb 10, 2023.

Thanks,



Madeline Hanford, EIT

Consultant, Environmental Engineer



Email: maddy.hanford@wsp.com

40 La Riviere Dr., Ste. 320
Buffalo, NY 14202

wsp.com

From: Schlegel, Jennifer <Jennifer.Schlegel@nationalgrid.com>

Sent: Tuesday, February 7, 2023 12:47 PM

To: Cole, Benjamin <Ben.Cole@wsp.com>

Cc: Dzimian, Timothy S. <Timothy.Dzimian@nationalgrid.com>; Aspinall, Pamela <Pamela.Aspinall@nationalgrid.com>; Graber, Bridget <Bridget.Grabber@nationalgrid.com>; Rick Chase <rick.chase@transmissiondevelopers.com>; Grassi, Laura <Laura.Grassi@wsp.com>; Hanford, Madeline <Maddy.Hanford@wsp.com>


Subject: RE: [EXTERNAL] CHPE Example Revised Utility Matrix

Hi Ben,

I thought we were going to use the format on the land use table for tracking? [National Grid Land Use 02-06-2023.xlsx](#)

I'm not sure all of the CI intersections need land rights- so it might get confusing. They are basically two different exercises. One is an engineering review and that appears to be verifying the voltage and the other is a real estate transaction. Plus there are real estate transactions that don't have crossings- so would they be added here?

Thank you, Jen

Jennifer Schlegel
Manager – ENY Electric Project Management
National Grid
1125 Broadway
Albany, NY 12204


From: Cole, Benjamin <Ben.Cole@wsp.com>

Sent: Tuesday, February 7, 2023 9:43 AM

To: Schlegel, Jennifer <Jennifer.Schlegel@nationalgrid.com>

Cc: Dzimian, Timothy S. <Timothy.Dzimian@nationalgrid.com>; Aspinall, Pamela <Pamela.Aspinall@nationalgrid.com>; Graber, Bridget <Bridget.Grabber@nationalgrid.com>; Rick Chase <rick.chase@transmissiondevelopers.com>; Grassi, Laura <Laura.Grassi@wsp.com>; Hanford, Madeline <Maddy.Hanford@wsp.com>

Subject: [EXTERNAL] CHPE Example Revised Utility Matrix

CAUTION: This email originated from outside of the organisation. Do not click links or open attachments unless you recognise the sender and know the content is safe. If you suspect this email is malicious, please use the 'Report Phish' button.

Good Morning Jen,

Attached is an example updated utility matrix for Package 4A. We're redoing the matrices into this format (with parcel owners and numbers, and land use). Before producing for each package we would like to confirm that this meets' National Grid's needs. Can you please review and comment?

Later today we'll send links to the updated land use table and to a task tracker. Those will probably come from Laura Grassi.

Thanks,

Ben Cole

[REDACTED]

ben.cole@wsp.com

NOTICE: This communication and any attachments ("this message") may contain information which is privileged, confidential, proprietary or otherwise subject to restricted disclosure under applicable law. This message is for the sole use of the intended recipient(s). Any unauthorized use, disclosure, viewing, copying, alteration, dissemination or distribution of, or reliance on, this message is strictly prohibited. If you have received this message in error, or you are not an authorized or intended recipient, please notify the sender immediately by replying to this message, delete this message and all copies from your e-mail system and destroy any printed copies.

-LAEmHhHzdJzBITWfa4Hgs7pbKl

This e-mail, and any attachments are strictly confidential and intended for the addressee(s) only. The content may also contain legal, professional or other privileged information. If you are not the intended recipient, please notify the sender immediately and then delete the e-mail and any attachments. You should not disclose, copy or take any action in reliance on this transmission.

You may report the matter by contacting us via our [UK Contacts Page](#) or our [US Contacts Page](#) (accessed by clicking on the appropriate link)

Please ensure you have adequate virus protection before you open or detach any documents from this transmission. National Grid plc and its affiliates do not accept any liability for viruses. An e-mail reply to this address may be subject to monitoring for operational reasons or lawful business practices.

For the registered information on the UK operating companies within the National Grid group please use the attached link: <https://www.nationalgrid.com/group/about-us/corporate-registrations>

Cole, Benjamin

From: Graber, Bridget <Bridget.Graber@nationalgrid.com>
Sent: Wednesday, March 1, 2023 2:25 PM
To: Grassi, Laura; Cole, Benjamin; Rick Chase
Cc: Aspinall, Pamela; Graber, Bridget; Schlegel, Jennifer; Graber, Bridget
Subject: Package verification for Package 3, 4B and 6
Attachments: Package 6 Verification.xlsx; Package 3 Verification.xlsx; National Grid CI Package Verification - 4B.xlsx

Hi Laura,
I went through the Package 3, 4B and 6 and I made notes in column labeled "Verified by Bridget."
You can see there are several discrepancies and I noted what they are.
Thank you,
Bridget

Bridget Graber, M.A.

Consulting Land Agent
Right of Way and Survey Engineering
nationalgrid | [Business Services](#)


Bridget.Graber@nationalgrid.com

1125 Broadway, Albany New York 12204
[nationalgrid.com](#) | [Twitter](#) | [LinkedIn](#) | [Facebook](#)

Please consider the environment before printing this email.

This e-mail, and any attachments are strictly confidential and intended for the addressee(s) only. The content may also contain legal, professional or other privileged information. If you are not the intended recipient, please notify the sender immediately and then delete the e-mail and any attachments. You should not disclose, copy or take any action in reliance on this transmission.

You may report the matter by contacting us via our [UK Contacts Page](#) or our [US Contacts Page](#) (accessed by clicking on the appropriate link)

Please ensure you have adequate virus protection before you open or detach any documents from this transmission. National Grid plc and its affiliates do not accept any liability for viruses. An e-mail reply to this address may be subject to monitoring for operational reasons or lawful business practices.

For the registered information on the UK operating companies within the National Grid group please use the attached link: <https://www.nationalgrid.com/group/about-us/corporate-registrations>

Cole, Benjamin

From: Mann, Kenneth A <Kenneth.Mann@charter.com>
Sent: Wednesday, September 21, 2022 9:24 AM
To: Cole, Benjamin
Subject: FW: CHPE Collocated Infrastructure Details_EM&CP 4A and 4B_Time Warner
Attachments: CHPE-SUB-0092.01-00-Package 4A_Time Warner_Co-Located Infrastructure_2022-09-13.pdf



Kenneth Mann | Construction Coordinator II | [REDACTED]
1021 Highbridge Rd | Schenectady, New York 12303 | Kenneth.Mann@Charter.com

From: Mann, Kenneth A
Sent: Wednesday, September 21, 2022 9:16 AM
To: 'Cole, Benjamin' <Ben.Cole@wsp.com>
Subject: RE: CHPE Collocated Infrastructure Details_EM&CP 4A and 4B_Time Warner

Here are Spectrum's potential conflicts outlined in the comment section of each package.

Ken



Kenneth Mann | Construction Coordinator II | [REDACTED]
1021 Highbridge Rd | Schenectady, New York 12303 | Kenneth.Mann@Charter.com

From: Cole, Benjamin <Ben.Cole@wsp.com>
Sent: Tuesday, September 20, 2022 8:59 PM
To: Mann, Kenneth A <Kenneth.Mann@charter.com>; Burgio, Chad M <Chad.Burgio@charter.com>; Frasier, Aaron W <Aaron.Frasier@charter.com>
Subject: [EXTERNAL] CHPE Collocated Infrastructure Details_EM&CP 4A and 4B_Time Warner

CAUTION: The e-mail below is from an external source. Please exercise caution before opening attachments, clicking links, or following guidance.

Good Evening All,

I'm writing on behalf of Transmission Developers Inc. ("TDI"), owner of the Champlain Hudson Power Express ("CHPE" or "Project") transmission line project. The purpose of this correspondence is to provide more detailed information related to how the CHPE project is designed to interact with your infrastructure and to solicit feedback from your company regarding the Project's alignment.

As you may recall from previous communications from Rick Chase at TDI, the CHPE is a fully permitted 339-mile underground and underwater high voltage direct current (HVDC) electric transmission line that will import up to 1,250 MW of renewable power from Canada and send it to the New York City metro area (see <https://chpexpress.com> for additional information).

At the link below please find design drawings of the proposed CHPE alignment where it involves your infrastructure within the Segment 6 Environmental Management and Construction Plan ("EM&CP") Packages 4A and 4B.

Links:

[CHPE-SUB-0092.01-00-Package 4A Time Warner Co-Located Infrastructure 2022-09-13.pdf](#)
[CHPE-SUB-0093.01-00-Package 4B Time Warner Co-Located Infrastructure 2022-09-13.pdf](#)

TDI will be submitting these plans to the New York State Public Service Commission ("PSC") for portions of the Project in the Towns of Ballston, Clifton Park, Glenville, and Rotterdam. This information is a follow-up to previous communications to you providing general project information and typical infrastructure crossing drawings.

Please review the linked information regarding the CHPE alignment relating to your infrastructure and provide concurrence with the Project's cable separation and alignment and any feedback to me (ben.cole@wsp.com) by October 3, 2022. It is important to TDI that the construction and operation of the CHPE project does not interfere with the continued operation of your infrastructure.

To the extent that the CHPE alignment interacts with your infrastructure within future Segment EM&CP submissions, we will provide you with similar drawings in advance of those filings. I look forward to coordinating with you as we finalize the design of the CHPE project.

Sincerely,

Ben Cole
WSP USA, on behalf of TDI


ben.cole@wsp.com

NOTICE: This communication and any attachments ("this message") may contain information which is privileged, confidential, proprietary or otherwise subject to restricted disclosure under applicable law. This message is for the sole use of the intended recipient(s). Any unauthorized use, disclosure, viewing, copying, alteration, dissemination or distribution of, or reliance on, this message is strictly prohibited. If you have received this message in error, or you are not an authorized or intended recipient, please notify the sender immediately by replying to this message, delete this message and all copies from your e-mail system and destroy any printed copies.

-LAEmHhHzdJzBITWfa4Hgs7pbKl

The contents of this e-mail message and any attachments are intended solely for the addressee(s) and may contain confidential and/or legally privileged information. If you are not the intended recipient of this message or if this message has been addressed to you in error, please immediately alert the sender by reply e-mail and then delete this message and any attachments. If you are not the intended recipient, you are notified that

any use, dissemination, distribution, copying,
or storage of this message or any attachment
is strictly prohibited.

Cole, Benjamin

From: Cole, Benjamin
Sent: Thursday, April 20, 2023 1:47 PM
To: Larue III, Anthony J; Alexander J Masti; Jason R Adkison
Cc: Grassi, Laura
Subject: RE: [E] RE: CHPE Collocated Infrastructure Details_EM&CP 4B and 7A_Verizon
Attachments: VerizonCHPE - Package 4B.ics

Hi Tony, Alex, Jason, Please see attached invite. I was not able to forward it.

Thx,
Ben

From: Larue III, Anthony J <tony.j.larue@verizon.com>
Sent: Thursday, April 20, 2023 1:44 PM
To: Cole, Benjamin <Ben.Cole@wsp.com>; Alexander J Masti <alexander.masti@verizon.com>; Jason R Adkison <jason.r.adkison@one.verizon.com>
Subject: Re: [E] RE: CHPE Collocated Infrastructure Details_EM&CP 4B and 7A_Verizon

Good Afternoon Cole - Could you extend the invite for today's meeting to Alex and Jason

Thanks

Tony

On Wed, Apr 19, 2023 at 5:11 PM Cole, Benjamin <Ben.Cole@wsp.com> wrote:

Hi Tony, Mike,

At the following link please find for your review and comment a plan/profile set that includes one additional interaction, which I understand is collocated with Time Warner. Hoping to touch base on this briefly during the call tomorrow.

[CHPE-SUB-0093.03-00-Time Warner Cable Verizon - CI Owner Package - 4B - 03-13-2023.pdf](#)

Thanks,

Ben Cole

██████████

ben.cole@wsp.com

From: Larue III, Anthony J <tony.j.larue@verizon.com>
Sent: Monday, April 17, 2023 3:32 PM
To: Michael Myers <mmyers@undc.com>
Cc: Cole, Benjamin <Ben.Cole@wsp.com>; Grassi, Laura <Laura.Grassi@wsp.com>
Subject: Re: [E] RE: CHPE Collocated Infrastructure Details_EM&CP 4B and 7A_Verizon

Received thank you

On Mon, Apr 17, 2023 at 1:39 PM Michael Myers <mmyers@undc.com> wrote:

Received; Thank You.

Michael S. Myers

Outside Plant Design Engineer

NY BAU Project Coordinator

[REDACTED]



From: Cole, Benjamin <Ben.Cole@wsp.com>
Sent: Monday, April 17, 2023 12:36 PM
To: Larue III, Anthony J <tony.j.larue@verizon.com>; Michael Myers <mmyers@undc.com>
Cc: Grassi, Laura <Laura.Grassi@wsp.com>
Subject: RE: [E] RE: CHPE Collocated Infrastructure Details_EM&CP 4B and 7A_Verizon

Yes. I received at 12:29p today. Please let me know if you didn't get a Teams invite.

Thanks,

Ben Cole

[REDACTED]

ben.cole@wsp.com

From: Larue III, Anthony J <tony.j.larue@verizon.com>

Sent: Monday, April 17, 2023 12:23 PM

To: Michael Myers <mmyers@undc.com>

Cc: Cole, Benjamin <Ben.Cole@wsp.com>; Grassi, Laura <Laura.Grassi@wsp.com>

Subject: Re: [E] RE: CHPE Collocated Infrastructure Details_EM&CP 4B and 7A_Verizon

sounds good - Is someone going to set up a bridge call?

On Mon, Apr 17, 2023 at 11:04 AM Michael Myers <mmyers@undc.com> wrote:

Ben:

Thursday at 2 PM works for me.

Thank You;

Michael S. Myers

Outside Plant Design Engineer

NY BAU Project Coordinator

[REDACTED]



From: Cole, Benjamin <Ben.Cole@wsp.com>
Sent: Monday, April 17, 2023 10:13 AM
To: Michael Myers <mmyers@undc.com>; Larue III, Anthony J <tony.j.larue@verizon.com>
Cc: Grassi, Laura <Laura.Grassi@wsp.com>
Subject: RE: [E] RE: CHPE Collocated Infrastructure Details_EM&CP 4B and 7A_Verizon

Hi Mike,

Following is this week's availability provided to me by the design team. What would work best for you?

Tuesday 12:30AM-1PM

Wednesday 3:30-4:30PM

Thursday 2-3PM, or 4-5PM

Friday 11AM-1PM

Thanks,

Ben Cole



ben.cole@wsp.com

From: Cole, Benjamin
Sent: Wednesday, April 12, 2023 11:18 AM
To: Michael Myers <mmyers@undc.com>; Larue III, Anthony J <tony.j.larue@verizon.com>

Cc: Grassi, Laura <Laura.Grassi@wsp.com>

Subject: RE: [E] RE: CHPE Collocated Infrastructure Details_EM&CP 4B and 7A_Verizon

Thank you Mike. I've reached out to the design folks with your availability, asking about theirs.

Ben Cole

[REDACTED]

ben.cole@wsp.com

From: Michael Myers <mmyers@undc.com>

Sent: Wednesday, April 12, 2023 11:01 AM

To: Cole, Benjamin <Ben.Cole@wsp.com>; Larue III, Anthony J <tony.j.larue@verizon.com>

Cc: Grassi, Laura <Laura.Grassi@wsp.com>

Subject: RE: [E] RE: CHPE Collocated Infrastructure Details_EM&CP 4B and 7A_Verizon

Benjamin:

Currently; I can make myself available most times the rest of this week and also Monday & Tuesday of next week.

Thank You;

Michael S. Myers

Outside Plant Design Engineer

NY BAU Project Coordinator

[REDACTED]



From: Cole, Benjamin <Ben.Cole@wsp.com>
Sent: Wednesday, April 12, 2023 10:28 AM
To: Larue III, Anthony J <tony.j.larue@verizon.com>; Michael Myers <mmyers@undc.com>
Cc: Grassi, Laura <Laura.Grassi@wsp.com>
Subject: RE: [E] RE: CHPE Collocated Infrastructure Details_EM&CP 4B and 7A_Verizon

Hi Tony, great. Thank you.

What is your/Mike's availability or days/times to avoid? I'll let the design team know so we can have the right people on, ask them to set up a call via Teams. (We like to be the call host so we can record transcript to reference in the future).

Thanks,

Ben Cole

[REDACTED]

ben.cole@wsp.com

From: Larue III, Anthony J <tony.j.larue@verizon.com>
Sent: Wednesday, April 12, 2023 9:39 AM
To: Cole, Benjamin <Ben.Cole@wsp.com>; Michael Myers <mmyers@undc.com>
Cc: Grassi, Laura <Laura.Grassi@wsp.com>
Subject: Re: [E] RE: CHPE Collocated Infrastructure Details_EM&CP 4B and 7A_Verizon

Good Morning Benjamin, I have looped in Mike Myers our contractor who fields and drafts jobs - I would like to set up a call to review the work and the potential conflicts with your build.

Mike I have taken out an EWO for your time 1A6G9MP

Thanks

Tony

[REDACTED]

On Mon, Apr 10, 2023 at 8:56 PM Cole, Benjamin <Ben.Cole@wsp.com> wrote:

Hi Nate, Tony,

At the link please find the updated Package 4B CHPE plan/profile

[CHPE-SUB-0093.03-00-Verizon - CI Owner Package - 4B - 03-13-2023.pdf](#)

Based on the utility matrix found on pages 1 and 2 of the drawing set, there appear to be approximately 5 Verizon-CHPE interactions. Please review the linked information at your earliest convenience and provide any feedback or comments that you may have regarding the accuracy and acceptability of the interactions.

Thank You,

Ben Cole

[REDACTED]

ben.cole@wsp.com

From: Cole, Benjamin

Sent: Wednesday, November 2, 2022 3:52 PM

To: Hill, Nathaniel RT (Nate) <nathaniel.hill@verizon.com>

Subject: CHPE Collocated Infrastructure Details_EM&CP 4B and 7A_Verizon

Hi Nate,

As you know, I'm writing on behalf of Transmission Developers Inc. ("TDI"), owner of the Champlain Hudson Power Express ("CHPE" or "Project") transmission line project. The purpose of this correspondence is to provide more detailed information related to how the CHPE project is designed to interact with your infrastructure and to solicit feedback from your company regarding the Project's alignment.

The CHPE is a fully permitted 339-mile underground and underwater high voltage direct current (HVDC) electric transmission line that will import up to 1,250 MW of renewable power from Canada and send it to the New York City metro area (see <https://chpexpress.com> for additional information).

At the links below please find design drawings of the proposed CHPE alignment where it involves your infrastructure within the Environmental Management and Construction Plan ("EM&CP") Packages 4B (Schenectady area) and 7A (Catskill area).

Links:

[Package 4B_Verizon_Co-Located Infrastructure Package_2022-10-31.pdf](#)

[Package 7A_Verizon_Co-Located Infrastructure Package_2022-10-31.pdf](#)

TDI will be submitting these plans to the New York State Public Service Commission ("PSC") for portions of the Project in your area. This information is a follow-up to previous communications to you providing general project information and typical infrastructure crossing drawings.

Please review the linked information regarding the CHPE alignment relating to your infrastructure and provide concurrence with the Project's cable separation and alignment and any feedback to me (ben.cole@wsp.com). It is important to TDI that the construction and operation of the CHPE project does not interfere with the continued operation of your infrastructure.

To the extent that the CHPE alignment interacts with your infrastructure within future Segment EM&CP submissions, we will provide you with similar drawings in advance of those filings. I look forward to coordinating with you as we finalize the design of the CHPE project.

Sincerely,

Ben Cole

[REDACTED]

ben.cole@wsp.com

NOTICE: This communication and any attachments ("this message") may contain information which is privileged, confidential, proprietary or otherwise subject to restricted disclosure under applicable law. This message is for the sole use of the intended recipient(s). Any unauthorized use, disclosure, viewing, copying, alteration, dissemination or distribution of, or reliance on, this message is strictly prohibited. If you have received this message in error, or you are not an authorized or intended recipient, please notify the sender immediately by replying to this message, delete this message and all copies from your e-mail system and destroy any printed copies.

-LAEmHhHzdJzBITWfa4Hgs7pbKI

--

Tony J. LaRue

11 Wards Ln 3rd Floor

Menands NY 12204

Engr III Spec-Ntwk Eng&Ops

[REDACTED]

--

Tony J. LaRue

11 Wards Ln 3rd Floor

Menands NY 12204

Engr III Spec-Ntwk Eng&Ops

[REDACTED]

--

Tony J. LaRue

11 Wards Ln 3rd Floor

Menands NY 12204

Engr III Spec-Ntwk Eng&Ops

[REDACTED]

--

Tony J. LaRue

11 Wards Ln 3rd Floor

Menands NY 12204

Engr III Spec-Ntwk Eng&Ops

[REDACTED]

Cole, Benjamin

From: Cole, Benjamin
Sent: Monday, May 8, 2023 11:38 AM
To: plafond@schenectadyny.gov; Christopher R. Wallin
Cc: Gibson, Robert; Grassi, Laura
Subject: RE: CHPE Collocated Infrastructure Details_EM&CP 4B_City of Schenectady

Good Morning Mr. Wallin,

Bob Gibson provided your contact information and asked me to send the CHPE CI Owner packages to you for comments/feedback. Please see below links to the most current packages that are available.

[CHPE-SUB-0093.03-00-City Of Schenectady - CI Owner Package - 4B - 03-13-2023.pdf](#)
[CHPE-SUB-0094.04-00-City of Schenectady - Package 5A - CI Package -05-04-23](#)

Please let me know any comments or if you have trouble with the links.

Thank You,

Ben Cole

[REDACTED]

ben.cole@wsp.com

From: Cole, Benjamin
Sent: Friday, May 5, 2023 2:23 PM
To: plafond@schenectadyny.gov
Cc: Laura Darling <ldarling@youngsommer.com>; Josh Bagnato <josh.bagnato@transmissiondevelopers.com>; Gibson, Robert <Bob.Gibson@wsp.com>; Grassi, Laura <Laura.Grassi@wsp.com>
Subject: RE: CHPE Collocated Infrastructure Details_EM&CP 4B_City of Schenectady

Good Afternoon,

Please see the statement below and the request in the second paragraph.

Thank You,

Ben Cole

[REDACTED]

ben.cole@wsp.com

Statement:

As you know, CHPE has been in ongoing dialogue with you regarding the design of CHPE's facilities within your municipality including utility crossings. You understand from CHPE that the design reflects your feedback. The designs in the proximity of your municipally owned utilities remain subject to your final comments and approval, which will be memorialized prior to the commencement of any construction activities in the vicinity of your utility.

As part of the State's EM&CP process, they have requested we provide updates on all interactions with private and public utility owners. In turn, we kindly request that you reply to this email as soon as possible confirming the statement above is accurate (or rephrase as you deem appropriate). If we don't receive a response from you, we will assume that you agree with the statements above, subject to your receipt and review of the final requested plans.

End of statement.

=====

From: Cole, Benjamin
Sent: Friday, October 14, 2022 11:15 AM
To: plafond@schenectadyny.gov
Subject: RE: CHPE Collocated Infrastructure Details_EM&CP 4B_City of Schenectady

Good Morning,

I'm checking in to see if you have comments on the information below or the Plans/Profiles available at the link (please see also the attached message sent yesterday, regarding CHPE Package 5A). Copying the links to these two sets of plans/profiles here for convenience:

Links:

[CHPE-SUB-0093.01-00-Package 4B_City of Schenectady_Co-Located Infrastructure_2022-09-13.pdf](#)
[Package 5A_City of Schenectady Water_Co-Located Infrastructure_2022-08-22.pdf](#)

Thank You,

Ben Cole


ben.cole@wsp.com

From: Cole, Benjamin
Sent: Wednesday, September 21, 2022 6:25 PM
To: plafond@schenectadyny.gov
Subject: CHPE Collocated Infrastructure Details_EM&CP 4B_City of Schenectady

Dear Mr. Lafond,

I'm writing on behalf of Transmission Developers Inc. ("TDI"), owner of the Champlain Hudson Power Express ("CHPE" or "Project") transmission line project. The purpose of this correspondence is to provide more detailed information related to how the CHPE project is designed to interact with your infrastructure and to solicit feedback from your company regarding the Project's alignment.

As you may recall from previous communications from Rick Chase at TDI, the CHPE is a fully permitted 339-mile underground and underwater high voltage direct current (HVDC) electric transmission line that will import up to 1,250 MW of renewable power from Canada and send it to the New York City metro area (see <https://chpexpress.com> for additional information).

At the link below please find design drawings of the proposed CHPE alignment where it involves your infrastructure within the Segment 6 Environmental Management and Construction Plan ("EM&CP") Package 4B.

Link: [CHPE-SUB-0093.01-00-Package 4B_City of Schenectady Co-Located Infrastructure_2022-09-13.pdf](#)

TDI will be submitting these plans to the New York State Public Service Commission (“PSC”) for portions of the Project in the Towns of Ballston, Clifton Park, Glenville, and Rotterdam. This information is a follow-up to previous communications to you providing general project information and typical infrastructure crossing drawings.

Please review the linked information regarding the CHPE alignment relating to your infrastructure and provide concurrence with the Project’s cable separation and alignment and any feedback to me (ben.cole@wsp.com) by October 3, 2022. It is important to TDI that the construction and operation of the CHPE project does not interfere with the continued operation of your infrastructure.

To the extent that the CHPE alignment interacts with your infrastructure within future Segment EM&CP submissions, we will provide you with similar drawings in advance of those filings. I look forward to coordinating with you as we finalize the design of the CHPE project.

Sincerely,

Ben Cole
WSP USA, on behalf of TDI


ben.cole@wsp.com

Cole, Benjamin

From: Cole, Benjamin
Sent: Monday, April 24, 2023 7:52 AM
To: Paul J. Sheldon; manager@schenectadycounty.com
Subject: RE: [EXTERNAL] CHPE Collocated Infrastructure Details_EM&CP 4B Schenectady County

Good Morning Mr. Sheldon,

At the following link please find the most current plan and profile drawing sets^(1, 2) depicting where the CHPE alignment interacts with your infrastructure.

[CHPE-SUB-0093.03-00-Schenectady - CI Owner Package - 4B - 03-13-2023.pdf](#)

Please let me know if you have comments or feedback, or note any conflicts on the drawing set.

Thank You,

Ben Cole

ben.cole@wsp.com

Notes:

- 1) Where applicable, CHPE team members may be in touch regarding a proposed Road Use Agreement, crossing agreement, or other Project matters.
- 2) Due to the dynamic nature of the current phase of the Project, a chance exists that ongoing discussions between your organization and the CHPE team are not fully reflected in the drawings. In such cases a revision of the plans/profiles that represents the final Project design will be provided when available.

From: Cole, Benjamin <Ben.Cole@wsp.com>
Sent: Friday, September 23, 2022 3:00 PM
To: Paul J. Sheldon <paul.sheldon@schenectadycounty.com>
Cc: manager <manager@schenectadycounty.com>
Subject: FW: [EXTERNAL] CHPE Collocated Infrastructure Details_EM&CP 4B Schenectady County

CAUTION: This email originated from outside your organization. Exercise caution when opening attachments or clicking links, especially from unknown senders.

Good Afternoon Mr. Sheldon.

Please see below message (with link to detailed information) sent earlier today to the County Manager.

Don't hesitate to reach out with comments and feedback.

Thank You,

Ben Cole

ben.cole@wsp.com

From: Cole, Benjamin <Ben.Cole@wsp.com>
Sent: Friday, September 23, 2022 12:41 PM
To: manager@schenectadycounty.com
Subject: [EXTERNAL] CHPE Collocated Infrastructure Details_EM&CP 4B Schenectady County

Good Afternoon,

I'm writing on behalf of Transmission Developers Inc. ("TDI"), owner of the Champlain Hudson Power Express ("CHPE" or "Project") transmission line project. The purpose of this correspondence is to provide more detailed information related to how the CHPE project is designed to interact with your infrastructure and to solicit feedback from your company regarding the Project's alignment.

The Project is a fully permitted 339-mile underground and underwater high voltage direct current (HVDC) electric transmission line that will import up to 1,250 MW of renewable power from Canada and send it to the New York City metro area (see <https://chpexpress.com> for additional information).

At the link below please find design drawings of the proposed CHPE alignment where it involves your infrastructure within the Environmental Management and Construction Plan ("EM&CP") Package 4B.

Link: [CHPE-SUB-0093.01-00-Package 4B_Schenectady County_Co-Located Infrastructure_2022-09-13.pdf](#)

TDI will be submitting these plans to the New York State Public Service Commission ("PSC") for portions of the Project in your area.

Please review the linked information regarding the CHPE alignment relating to your infrastructure and provide concurrence with the Project's cable separation and alignment and any feedback to me (ben.cole@wsp.com) by October 7, 2022. It is important to TDI that the construction and operation of the CHPE project does not interfere with the continued operation of your infrastructure.

To the extent that the CHPE alignment interacts with your infrastructure within future Segment EM&CP submissions, we will provide you with similar drawings in advance of those filings. I look forward to coordinating with you as we finalize the design of the CHPE project.

Sincerely,

Ben Cole
WSP USA, on behalf of TDI

ben.cole@wsp.com

NOTICE: This communication and any attachments ("this message") may contain information which is privileged, confidential, proprietary or otherwise subject to restricted disclosure under applicable law. This message is for the sole use of the intended recipient(s). Any unauthorized use, disclosure, viewing, copying, alteration, dissemination or distribution of, or reliance on, this message is strictly prohibited. If you have received this message in error, or you are not an authorized or intended recipient, please notify the sender immediately by replying to this message, delete this message and all copies from your e-mail system and destroy any printed copies.

This email and any files transmitted with it are confidential and intended solely for the use of the individual or entity to whom they are addressed. This message contains confidential information and is intended only for the individual named. If you are not the named addressee you should not disseminate, distribute or copy this e-mail. Please notify the sender immediately by e-mail if you have received this e-mail by mistake and delete this e-mail from your system. If you are not the intended recipient you are notified that disclosing, copying, distributing or taking any action in reliance on the contents of this information is strictly prohibited.

Cole, Benjamin

From: Cole, Benjamin
Sent: Monday, September 26, 2022 3:02 PM
To: Paul J. Sheldon
Subject: RE: [EXTERNAL] CHPE Collocated Infrastructure Details_EM&CP 4B Schenectady County

Hi Paul, yes. That is correct.

Thanks,

Ben Cole

[REDACTED]

ben.cole@wsp.com

From: Paul J. Sheldon <paul.sheldon@schenectadycounty.com>
Sent: Monday, September 26, 2022 9:57 AM
To: Cole, Benjamin <Ben.Cole@wsp.com>
Subject: RE: [EXTERNAL] CHPE Collocated Infrastructure Details_EM&CP 4B Schenectady County

Ben,

It appears that for this leg the transmission line is mostly within railroad right-of-way. Is that correct?

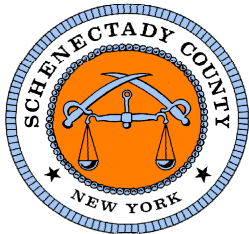
Paul Sheldon, P.E.

Director of Public Works
Schenectady County Department of Engineering and Public Works
100 Kellar Avenue
Schenectady, NY 12306

[REDACTED]

paul.sheldon@schenectadycounty.com

www.schenectadycounty.com



From: Cole, Benjamin <Ben.Cole@wsp.com>
Sent: Friday, September 23, 2022 3:00 PM
To: Paul J. Sheldon <paul.sheldon@schenectadycounty.com>
Cc: manager <manager@schenectadycounty.com>
Subject: FW: [EXTERNAL] CHPE Collocated Infrastructure Details_EM&CP 4B Schenectady County

CAUTION: This email originated from outside your organization. Exercise caution when opening attachments or clicking links, especially from unknown senders.

Good Afternoon Mr. Sheldon.

Please see below message (with link to detailed information) sent earlier today to the County Manager.

Don't hesitate to reach out with comments and feedback.

Thank You,

Ben Cole



ben.cole@wsp.com

From: Cole, Benjamin <Ben.Cole@wsp.com>

Sent: Friday, September 23, 2022 12:41 PM

To: manager@schenectadycounty.com

Subject: [EXTERNAL] CHPE Collocated Infrastructure Details_EM&CP 4B Schenectady County

Good Afternoon,

I'm writing on behalf of Transmission Developers Inc. ("TDI"), owner of the Champlain Hudson Power Express ("CHPE" or "Project") transmission line project. The purpose of this correspondence is to provide more detailed information related to how the CHPE project is designed to interact with your infrastructure and to solicit feedback from your company regarding the Project's alignment.

The Project is a fully permitted 339-mile underground and underwater high voltage direct current (HVDC) electric transmission line that will import up to 1,250 MW of renewable power from Canada and send it to the New York City metro area (see <https://chpexpress.com> for additional information).

At the link below please find design drawings of the proposed CHPE alignment where it involves your infrastructure within the Environmental Management and Construction Plan ("EM&CP") Package 4B.

Link: [CHPE-SUB-0093.01-00-Package 4B_Schenectady County_Co-Located Infrastructure_2022-09-13.pdf](#)

TDI will be submitting these plans to the New York State Public Service Commission ("PSC") for portions of the Project in your area.

Please review the linked information regarding the CHPE alignment relating to your infrastructure and provide concurrence with the Project's cable separation and alignment and any feedback to me (ben.cole@wsp.com) by October 7, 2022. It is important to TDI that the construction and operation of the CHPE project does not interfere with the continued operation of your infrastructure.

To the extent that the CHPE alignment interacts with your infrastructure within future Segment EM&CP submissions, we will provide you with similar drawings in advance of those filings. I look forward to coordinating with you as we finalize the design of the CHPE project.

Sincerely,

Ben Cole
WSP USA, on behalf of TDI
[REDACTED]
ben.cole@wsp.com

NOTICE: This communication and any attachments ("this message") may contain information which is privileged, confidential, proprietary or otherwise subject to restricted disclosure under applicable law. This message is for the sole use of the intended recipient(s). Any unauthorized use, disclosure, viewing, copying, alteration, dissemination or distribution of, or reliance on, this message is strictly prohibited. If you have received this message in error, or you are not an authorized or intended recipient, please notify the sender immediately by replying to this message, delete this message and all copies from your e-mail system and destroy any printed copies.

-LAEmHhHzdJzBITWfa4Hgs7pbKl

This email and any files transmitted with it are confidential and intended solely for the use of the individual or entity to whom they are addressed. This message contains confidential information and is intended only for the individual named. If you are not the named addressee you should not disseminate, distribute or copy this e-mail. Please notify the sender immediately by e-mail if you have received this e-mail by mistake and delete this e-mail from your system. If you are not the intended recipient you are notified that disclosing, copying, distributing or taking any action in reliance on the contents of this information is strictly prohibited.

Cole, Benjamin

From: Cole, Benjamin
Sent: Monday, April 24, 2023 7:51 AM
To: CKoetzle@townofglenville.org; tcoppola@townofglenville.org; jdavenport@townofglenville.org
Subject: Re: CHPE Collocated Infrastructure Details_EM&CP 4A and 4B_Town of Glenville

Good Morning,

At the following links please find the most current plan and profile drawing sets^(1, 2) depicting where the CHPE alignment interacts with your infrastructure.

[CHPE-SUB-0092.02-00-Town of Glenville - CI Owner Package - 4A - 03-10-2023.pdf](#)
[CHPE-SUB-0093.03-00-Town of Glenville - CI Owner Package - 4B - 03-13-2023.pdf](#)

Please let me know if you have comments or feedback, or note any conflicts on the drawing sets.

Thank You,

Ben Cole

[REDACTED]

ben.cole@wsp.com

Notes:

- 1) Where applicable, CHPE team members may be in touch regarding a proposed Road Use Agreement, crossing agreement, or other Project matters.
- 2) Due to the dynamic nature of the current phase of the Project, a chance exists that ongoing discussions between your organization and the CHPE team are not fully reflected in the drawings. In such cases a revision of the plans/profiles that represents the final Project design will be provided when available.

From: Cole, Benjamin
Sent: Friday, October 14, 2022 11:08 AM
To: CKoetzle@townofglenville.org; tcoppola@townofglenville.org; jdavenport@townofglenville.org
Subject: RE: CHPE Collocated Infrastructure Details_EM&CP 4A and 4B_Town of Glenville

Good Morning,

I'm checking in to see if you have comments on the information below or the Plans/Profiles available at the links.

Thank You,

Ben Cole

[REDACTED]

ben.cole@wsp.com

From: Cole, Benjamin
Sent: Wednesday, September 21, 2022 5:33 PM
To: CKoetzle@townofglenville.org; tcoppola@townofglenville.org; jdavenport@townofglenville.org
Subject: CHPE Collocated Infrastructure Details_EM&CP 4A and 4B_Town of Glenville

Good Evening,

I'm writing on behalf of Transmission Developers Inc. ("TDI"), owner of the Champlain Hudson Power Express ("CHPE" or "Project") transmission line project. The purpose of this correspondence is to provide more detailed information related to how the CHPE project is designed to interact with your infrastructure and to solicit feedback from your company regarding the Project's alignment.

As you may recall from previous communications from Rick Chase at TDI, the CHPE is a fully permitted 339-mile underground and underwater high voltage direct current (HVDC) electric transmission line that will import up to 1,250 MW of renewable power from Canada and send it to the New York City metro area (see <https://chpexpress.com> for additional information).

At the link below please find design drawings of the proposed CHPE alignment where it involves your infrastructure within the Segment 6 Environmental Management and Construction Plan ("EM&CP") Packages 4A and 4B.

Link:

[CHPE-SUB-0092.01-00-Package 4A Town of Glenville Co-Located Infrastructure 2022-09-13.pdf](#)
[CHPE-SUB-0093.01-00-Package 4B Town of Glenville Co-Located Infrastructure 2022-09-13.pdf](#)

TDI will be submitting these plans to the New York State Public Service Commission ("PSC") for portions of the Project in the Towns of Ballston, Clifton Park, Glenville, and Rotterdam. This information is a follow-up to previous communications to you providing general project information and typical infrastructure crossing drawings.

Please review the linked information regarding the CHPE alignment relating to your infrastructure and provide concurrence with the Project's cable separation and alignment and any feedback to me (ben.cole@wsp.com) by October 3, 2022. It is important to TDI that the construction and operation of the CHPE project does not interfere with the continued operation of your infrastructure.

To the extent that the CHPE alignment interacts with your infrastructure within future Segment EM&CP submissions, we will provide you with similar drawings in advance of those filings. I look forward to coordinating with you as we finalize the design of the CHPE project.

Sincerely,

Ben Cole
WSP USA, on behalf of TDI


ben.cole@wsp.com

Cole, Benjamin

From: Cole, Benjamin
Sent: Friday, May 5, 2023 2:23 PM
To: cjdodson@rotterdamny.org; mcollins@rotterdamny.org; llamora@rotterdamny.org
Cc: Fred C. Mastroianni; Laura Darling; Josh Bagnato; Gibson, Robert; Grassi, Laura
Subject: RE: CHPE Collocated Infrastructure Details_EM&CP 4B and 5A_Town of Rotterdam

Good Afternoon All,

Please see the statement below and the request in the second paragraph.

Thank You,

Ben Cole

ben.cole@wsp.com

Statement:

As you know, CHPE has been in ongoing dialogue with you regarding the design of CHPE's facilities within your municipality including utility crossings. You understand from CHPE that the design reflects your feedback. The designs in the proximity of your municipally owned utilities remain subject to your final comments and approval, which will be memorialized prior to the commencement of any construction activities in the vicinity of your utility.

As part of the State's EM&CP process, they have requested we provide updates on all interactions with private and public utility owners. In turn, we kindly request that you reply to this email as soon as possible confirming the statement above is accurate (or rephrase as you deem appropriate). If we don't receive a response from you, we will assume that you agree with the statements above, subject to your receipt and review of the final requested plans.

End of statement.

=====

From: Cole, Benjamin
Sent: Monday, April 24, 2023 7:50 AM
To: 'cjdodson@rotterdamny.org' <cjdodson@rotterdamny.org>; 'mcollins@rotterdamny.org' <mcollins@rotterdamny.org>; 'llamora@rotterdamny.org' <llamora@rotterdamny.org>
Subject: CHPE Collocated Infrastructure Details_EM&CP 4B and 5A_Town of Rotterdam

Good Morning,

At the following links please find the most current plan and profile drawing sets^(1, 2) depicting where the CHPE alignment interacts with your infrastructure.

[CHPE-SUB-0093.03-00-Town of Rotterdam - CI Owner Package - 4B - 03-13-2023.pdf](#)
[CHPE-SUB-0094.03-00-Town of Rotterdam Water & Sewer - CI Owner Package - 5A - 03-08-2023.pdf](#)

Please let me know if you have comments or feedback, or note any conflicts on the drawing sets.

Thank You,

Ben Cole

ben.cole@wsp.com

Notes:

- 1) Where applicable, CHPE team members may be in touch regarding a proposed Road Use Agreement, crossing agreement, or other Project matters.
- 2) Due to the dynamic nature of the current phase of the Project, a chance exists that ongoing discussions between your organization and the CHPE team are not fully reflected in the drawings. In such cases a revision of the plans/profiles that represents the final Project design will be provided when available.

From: Cole, Benjamin

Sent: Tuesday, April 4, 2023 12:14 PM

To: 'cjdodson@rotterdamny.org' <cjdodson@rotterdamny.org>; 'mcollins@rotterdamny.org' <mcollins@rotterdamny.org>; 'llamora@rotterdamny.org' <llamora@rotterdamny.org>

Subject: RE: KWT - Overland: New Transmittal - WSP-ROTT-TRNS-0131 - CHPE Package 5A Co-Located Infrastructure Matrix and Drawings - Town of Rotterdam

Good Afternoon,

At the following link please find the most current drawing set available for CHPE Package 5A: [CHPE-SUB-0094.02-00-Package 5A Town of Rotterdam Co-Located Infrastructure 2022-08-22.pdf](#)

Please let me know if you have feedback or comments on the drawings, with respect to how the CHPE proposed CHPE alignment interacts with Town infrastructure.

Thank You,

Ben Cole

ben.cole@wsp.com

From: Cole, Benjamin

Sent: Friday, October 14, 2022 12:06 PM

To: cjdodson@rotterdamny.org; mcollins@rotterdamny.org; llamora@rotterdamny.org

Subject: RE: KWT - Overland: New Transmittal - WSP-ROTT-TRNS-0131 - CHPE Package 5A Co-Located Infrastructure Matrix and Drawings - Town of Rotterdam

Good Morning,

I'm checking in to see if you have comments on the information below or the Plans/Profiles available at the link (please see also the attached message sent yesterday, regarding CHPE Package 4B). Copying the links to these two sets of plans/profiles here for convenience:

Links:

[CHPE-SUB-0093.01-00-Package 4B Town of Rotterdam Co-Located Infrastructure 2022-09-13.pdf](#)
[Package 5A Town of Rotterdam Co-Located Infrastructure 2022-08-22.pdf](#)

Thank You,

Ben Cole

ben.cole@wsp.com

From: Cole, Benjamin

Sent: Thursday, October 13, 2022 6:32 PM

To: cjdodson@rotterdamny.org; mcollins@rotterdamny.org; llamora@rotterdamny.org

Subject: RE: KWT - Overland: New Transmittal - WSP-ROTT-TRNS-0131 - CHPE Package 5A Co-Located Infrastructure Matrix and Drawings - Town of Rotterdam

Good Evening,

I'm checking in to see if you have comments on the information below and plans/profiles available at the link.

Thank You,

Ben Cole

[REDACTED]

ben.cole@wsp.com

From: CHPE-KWT@portal3.pbid.com <CHPE-KWT@portal3.pbid.com>

Sent: Thursday, September 8, 2022 2:01 PM

To: cjdodson@rotterdamny.org; mcollins@rotterdamny.org; llamora@rotterdamny.org

Cc: CHPE-KWT@portal3.pbid.com

Subject: KWT - Overland: New Transmittal - WSP-ROTT-TRNS-0131 - CHPE Package 5A Co-Located Infrastructure Matrix and Drawings - Town of Rotterdam

Workflow Notification

A new Transmittal has been entered into the system.

Transmittal #: WSP-ROTT-TRNS-0131

Subject: CHPE Package 5A Co-Located Infrastructure Matrix and Drawings - Town of Rotterdam

ATTN: Mollie Collins, Jack Dodson, Larry LaMora

From: Ben Cole

Issue Purpose: For Your Information

Date Transmitted: 9/2/2022

Comments: Good Afternoon,

I'm writing on behalf of Transmission Developers Inc. ("TDI"), owner of the Champlain Hudson Power Express ("CHPE" or "Project") transmission line project. The purpose of this correspondence is to provide more detailed information related to how the CHPE project is designed to interact with your infrastructure and to solicit feedback from your company regarding the Project's alignment.

The CHPE is a fully permitted 339-mile underground and underwater high voltage direct current (HVDC) electric transmission line that will import up to 1,250 MW of renewable power from Canada and send it to the New York City metro area (see <https://chpexpress.com> for additional information).

At the enclosed link please find design drawings of the proposed CHPE alignment where it involves your infrastructure

within
the CHPE Package referenced in the title of this message.

TDI will be submitting these plans to the New York State Public Service Commission ("PSC") for approval prior to construction.

Please review the linked information regarding the CHPE alignment relating to your infrastructure and provide concurrence with the Project's cable separation and alignment and any feedback to ben.cole@wsp.com by September 16, 2022.

It is important to TDI that the construction and operation of the CHPE project does not interfere with the continued operation of your infrastructure.

To the extent that the CHPE alignment interacts with your infrastructure within future Segment EM&CP submissions, we will provide you with similar drawings in advance of those filings. I look forward to coordinating with you as we finalize the design of the CHPE project.

Thank You,

Ben Cole
WSP USA, on behalf of TDI


ben.cole@wsp.com

File Links (link will be active for 60 days):

File Name
Package 5A Town of Rotterdam Co-Located Infrastructure 2022-08-22.pdf

CHPE SharePoint users can access the record and file(s) using the link below:

<https://chpe.pbid.com/KWT/layouts/15/DocSetHome.aspx?id=/KWT/Transmittals/CHPE%20Package%205A%20Co-Located%20Infrastructure%20Matrix%20and%20Drawings%20-%20Town%20of%20Rotterdam&OpenIn=browser>

Disclaimer: The information contained in this email, including linked content, is considered confidential and may be privileged. It is intended only for the person or entity to which it is addressed and must not be sent or made accessible to other recipients. If you are not the intended recipient, you are hereby notified that any review, retransmission, dissemination or other use of, or taking any action in reliance upon this information is strictly prohibited. If you have received this email in error, kindly notify chpedoccontrol@portal3.pbid.com and delete the original message from your system.

Thank You.

Cole, Benjamin

From: Cole, Benjamin
Sent: Tuesday, April 11, 2023 7:22 AM
To: Ryan Kedzior; David Bucciferro
Cc: Grassi, Laura; Gibson, Robert
Subject: RE: CHPE Collocated Infrastructure Details_EM&CP 4B_Village of Scotia

Thank you Sir.

Mayor please see below and let me know if you have questions, comments or feedback.

Thank You,

Ben Cole


ben.cole@wsp.com

From: Ryan Kedzior <RKedzior@villageofscotiany.gov>
Sent: Tuesday, April 11, 2023 7:13 AM
To: Cole, Benjamin <Ben.Cole@wsp.com>; David Bucciferro <DBucciferro@villageofscotiany.gov>
Cc: Grassi, Laura <Laura.Grassi@wsp.com>; Gibson, Robert <Bob.Gibson@wsp.com>
Subject: RE: CHPE Collocated Infrastructure Details_EM&CP 4B_Village of Scotia

Good Morning All –
I have included our new mayor, David Bucciferro on this email.

Bob – Are you still looking to use the property behind the DPW building for staging?

Thank you,

Ryan Kedzior
Superintendent of Public Works
Village of Scotia, NY


RKedzior@villageofscotiany.gov

From: Cole, Benjamin <Ben.Cole@wsp.com>
Sent: Monday, April 10, 2023 9:47 PM
To: Tom Gifford <tgifford@villageofscotiany.gov>; Ryan Kedzior <RKedzior@villageofscotiany.gov>
Cc: Grassi, Laura <Laura.Grassi@wsp.com>; Gibson, Robert <Bob.Gibson@wsp.com>
Subject: RE: CHPE Collocated Infrastructure Details_EM&CP 4B_Village of Scotia

Hi Mayor Gifford,

Want to circle back on this as the Project design gets closer to completion and make sure there aren't outstanding comments from yourself or anyone from the Village that need to be addressed.

I understand my colleague Bob Gibson may be trying to reach, or is in communication with, Superintendent Kedzior related to a road use agreement (RUA). Aside from matters regarding the RUA, please let me know if there are other comments/outstanding matters to address.

An updated Plan/Profile drawing set is available at the following link: [CHPE-SUB-0093.03-00-Village of Scotia - CI Owner Package - 4B - 03-13-2023.pdf](#)

Thank You,

Ben Cole

[REDACTED]

ben.cole@wsp.com

From: Cole, Benjamin

Sent: Friday, October 14, 2022 12:26 PM

To: Tom Gifford <tgifford@villageofscotiany.gov>; Ryan Kedzior <RKedzior@villageofscotiany.gov>

Cc: Rick Chase <rick.chase@transmissiondevelopers.com>

Subject: RE: CHPE Collocated Infrastructure Details_EM&CP 4B_Village of Scotia

Than you Sir. Really appreciate the feedback.

Since you said new comments I have to ask (please forgive my ignorance): if you previously provided comments related to project details such as alignment, separation from/interaction with Village infrastructure, Village requirements for crossing, etc. please let me know. I was probably not part of such conversations and want to make sure nothing falls through the cracks.

Thanks,

Ben Cole

[REDACTED]

ben.cole@wsp.com

From: Tom Gifford <tgifford@villageofscotiany.gov>

Sent: Friday, October 14, 2022 11:32 AM

To: Cole, Benjamin <Ben.Cole@wsp.com>; Ryan Kedzior <RKedzior@villageofscotiany.gov>

Subject: Re: CHPE Collocated Infrastructure Details_EM&CP 4B_Village of Scotia

Ben-

I have no issues or comments that are new. It is just as was originally described for the Village and I firmly believe that the impact on the Village will be nothing but positive.

Tom Gifford

Mayor of Scotia

[REDACTED]
[REDACTED]
[REDACTED]

From: Cole, Benjamin <Ben.Cole@wsp.com>
Sent: Friday, October 14, 2022 11:20 AM
To: Tom Gifford <tgifford@villageofscotiany.gov>; Ryan Kedzior <RKedzior@villageofscotiany.gov>
Subject: RE: CHPE Collocated Infrastructure Details_EM&CP 4B_Village of Scotia

Good Morning,

I'm checking in to see if you have comments on the information below or the Plans/Profiles available at the link.

Thank You,

Ben Cole
[REDACTED]
ben.cole@wsp.com

From: Cole, Benjamin
Sent: Wednesday, September 21, 2022 6:44 PM
To: tgifford@villageofscotiany.gov; rkedzior@villageofscotiany.gov
Subject: CHPE Collocated Infrastructure Details_EM&CP 4B_Village of Scotia

Good Evening,

I'm writing on behalf of Transmission Developers Inc. ("TDI"), owner of the Champlain Hudson Power Express ("CHPE" or "Project") transmission line project. The purpose of this correspondence is to provide more detailed information related to how the CHPE project is designed to interact with your infrastructure and to solicit feedback from your company regarding the Project's alignment.

As you may recall from previous communications from Rick Chase at TDI, the CHPE is a fully permitted 339-mile underground and underwater high voltage direct current (HVDC) electric transmission line that will import up to 1,250 MW of renewable power from Canada and send it to the New York City metro area (see <https://chpexpress.com> for additional information).

At the link below please find design drawings of the proposed CHPE alignment where it involves your infrastructure within the Segment 6 Environmental Management and Construction Plan ("EM&CP") Package 4B.

Link: [CHPE-SUB-0093.01-00-Package 4B Village of Scotia Co-Located Infrastructure 2022-09-13.pdf](#)

TDI will be submitting these plans to the New York State Public Service Commission ("PSC") for portions of the Project in the Towns of Ballston, Clifton Park, Glenville, and Rotterdam. This information is a follow-up to previous communications to you providing general project information and typical infrastructure crossing drawings.

Please review the linked information regarding the CHPE alignment relating to your infrastructure and provide concurrence with the Project's cable separation and alignment and any feedback to me (ben.cole@wsp.com) by October

3, 2022. It is important to TDI that the construction and operation of the CHPE project does not interfere with the continued operation of your infrastructure.

To the extent that the CHPE alignment interacts with your infrastructure within future Segment EM&CP submissions, we will provide you with similar drawings in advance of those filings. I look forward to coordinating with you as we finalize the design of the CHPE project.

Sincerely,

Ben Cole
WSP USA, on behalf of TDI


ben.cole@wsp.com

NOTICE: This communication and any attachments ("this message") may contain information which is privileged, confidential, proprietary or otherwise subject to restricted disclosure under applicable law. This message is for the sole use of the intended recipient(s). Any unauthorized use, disclosure, viewing, copying, alteration, dissemination or distribution of, or reliance on, this message is strictly prohibited. If you have received this message in error, or you are not an authorized or intended recipient, please notify the sender immediately by replying to this message, delete this message and all copies from your e-mail system and destroy any printed copies.

-LAEmHhHzdJzBITWfa4Hgs7pbKI

Package 4B (Segment 7) and Road Use and Crossing Agreement (RUA) Status

Utility Owner	Utility Type (Quantity)	Agreement Status/Date	Details	RUA
			<p>believe that the impact on the Village will be nothing but positive."</p> <p>4/10/23 sent updated CI Owner package, asked for feedback.</p> <p>4/11/23 request forwarded to new Mayor by Public Works Superintendent and reiterated interest in receiving any comments/feedback the Village may have.</p> <p>5/10/23 meeting held with Village Mayor and Highway Superintendent to provide project update and discuss road crossings and easement and temporary construction access at DPW facility.</p>	