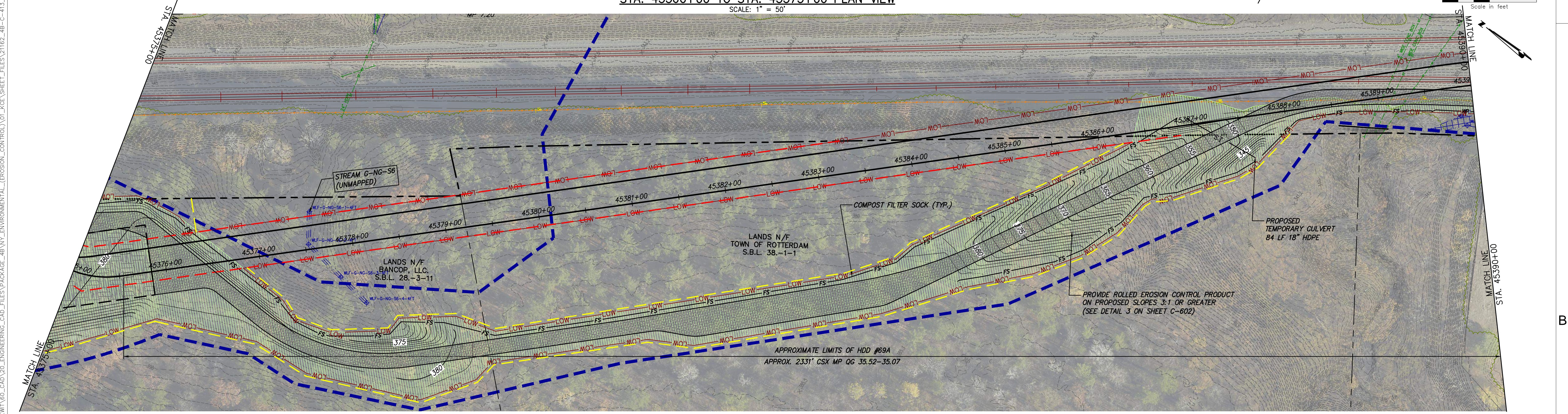



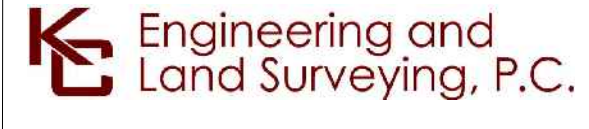


STA. 45360+00 TO STA. 45375+00 PLAN VIEW

SCALE: 1" = 50'



STA. 45375+00 TO STA. 45390+00 PLAN VIEW

SCALE: 1" = 50'



IT IS A VIOLATION OF LAW FOR ANY PERSON, UNLESS THEY ARE ACTING UNDER THE DIRECTION OF A LICENSED PROFESSIONAL ENGINEER, ARCHITECT, LANDSCAPE ARCHITECT OR LAND SURVEYOR TO ALTER AN ITEM IN ANY WAY. IF AN ITEM BEARING THE STAMP OF A LICENSED PROFESSIONAL IS ALTERED, THE ALTERING ENGINEER, ARCHITECT, LANDSCAPE ARCHITECT OR LAND SURVEYOR SHALL STAMP THE DOCUMENT AND INCLUDE THE NOTATION "ALTERED BY" FOLLOWED BY THEIR SIGNATURE, THE DATE OF SUCH ALTERATION, AND A SPECIFIC DESCRIPTION OF THE ALTERATION.

No.	DATE	SUBMITTAL / REVISION DESCRIPTION	DB	APP
0	07/28/2023	ISSUED FOR CONSTRUCTION SUBMISSION	BL	SL

CHAMPLAIN HUDSON POWER EXPRESS  
SEGMENT 7 (PACKAGE 4B) - CSX - PAN AM SOUTHERN  
EROSION AND SEDIMENT CONTROL PLAN  
STA. 45360+00 TO STA. 45390+00

DRAWN BY: BL

DESIGNED BY: BL

APPROVED BY: SL

SCALE: AS NOTED

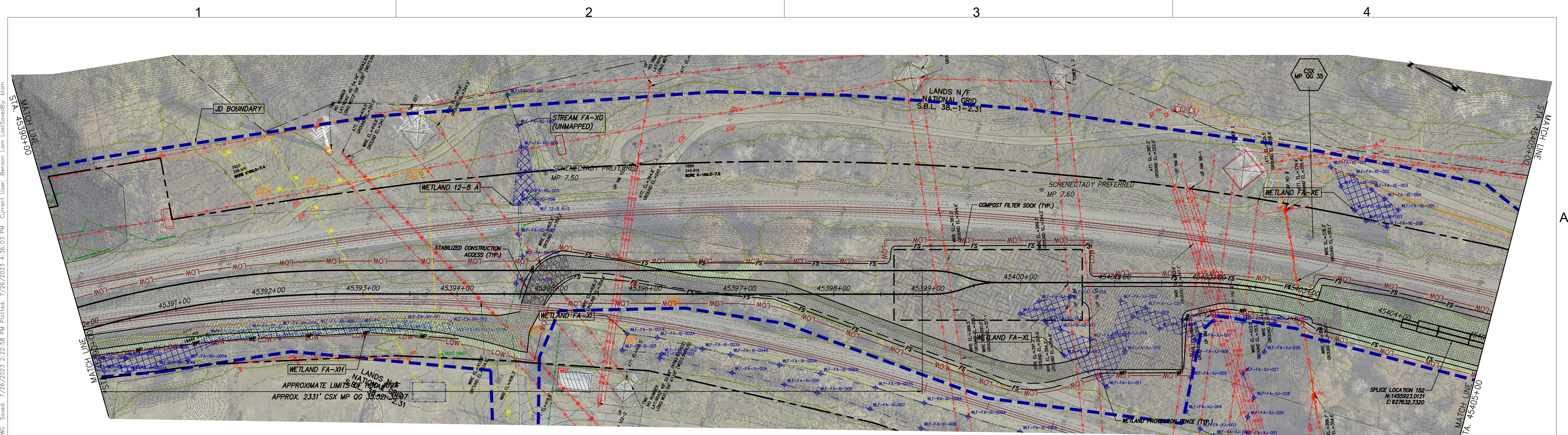
REV. NO. 0

KIEWIT PROJECT NO. 21162  
KC PROJECT NO. 120174  
DRAWING NO. C-413

DATE 07/26/2023

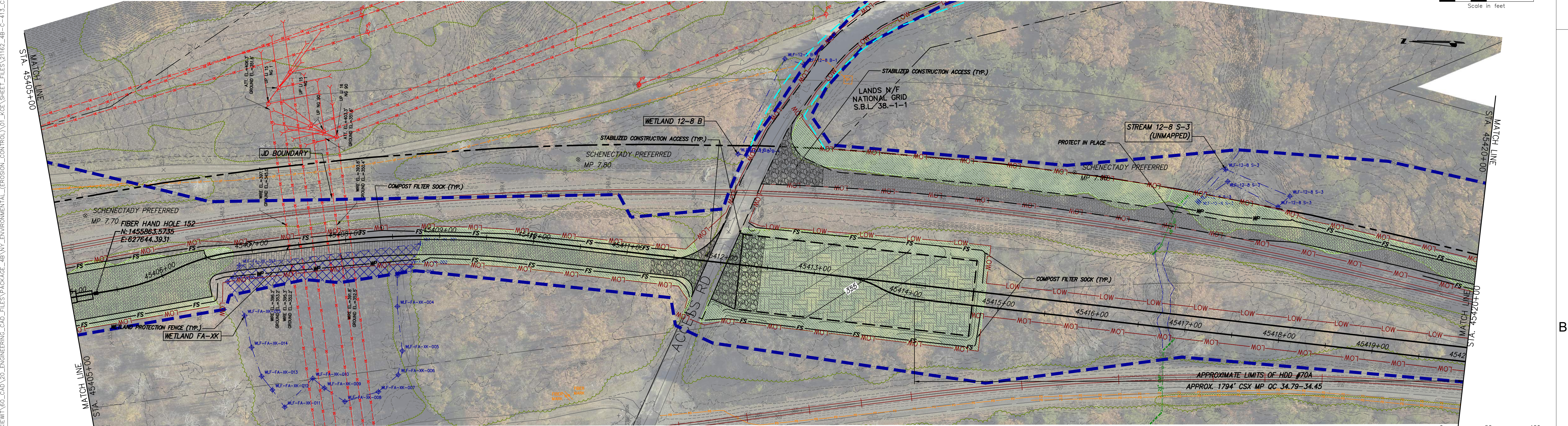
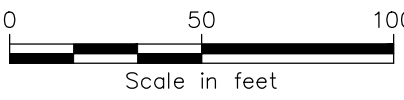
SH.NO. OF





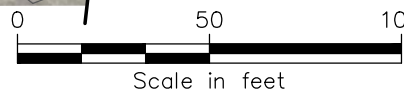
STA. 45390+00 TO STA. 45405+00 PLAN VIEW


SCALE: 1" = 50'




STA. 45405+00 TO STA. 45420+00 PLAN VIEW

SCALE: 1" = 50'

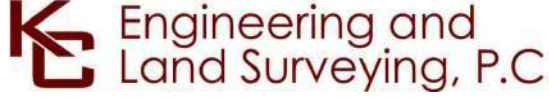





Champlain Hudson  
Power Express



Kiewit



Engineering and  
Land Surveying, P.C.



STATE OF NEW YORK  
JULIAN LEWIS  
102293  
LAND SURVEYOR

IT IS A VIOLATION OF LAW FOR ANY PERSON, UNLESS THEY ARE ACTING UNDER THE DIRECTION OF A LICENSED PROFESSIONAL ENGINEER, ARCHITECT, LANDSCAPE ARCHITECT OR LAND SURVEYOR TO ALTER AN ITEM IN ANY WAY. IF AN ITEM BEARING THE STAMP OF A LICENSED PROFESSIONAL IS ALTERED, THE ALTERING ENGINEER, ARCHITECT, LANDSCAPE ARCHITECT OR LAND SURVEYOR SHALL STAMP THE DOCUMENT AND INCLUDE THE NOTATION "ALTERED BY" FOLLOWED BY THEIR SIGNATURE, THE DATE OF SUCH ALTERATION, AND A SPECIFIC DESCRIPTION OF THE ALTERATION.

No.	DATE	SUBMITTAL / REVISION DESCRIPTION	DB	APP
0	07/26/2023	ISSUED FOR CONSTRUCTION SUBMISSION	BL	SL

CHAMPLAIN HUDSON POWER EXPRESS  
SEGMENT 7 (PACKAGE 4B) - CSX - PAN AM SOUTHERN  
EROSION AND SEDIMENT CONTROL PLAN  
STA. 45390+00 TO STA. 45420+00

DRAWN BY:	DESIGNED BY:	APPROVED BY:	SCALE	AS NOTED	DATE
BL	BL	SL	REV. NO.	0	07/26/2023

KIEWIT PROJECT NO.	KC PROJECT NO.	DRAWING NO.
21162	120174	C-414





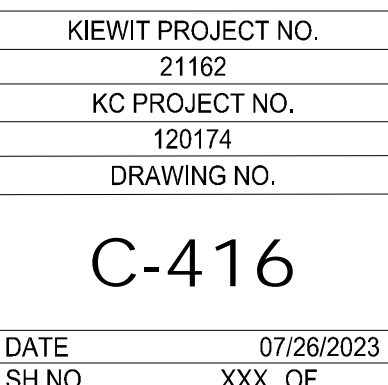




A horizontal scale bar with a black and white alternating pattern. It is labeled "Scale in feet" below the bar. Numerical markings are present at 0, 50, and 100.



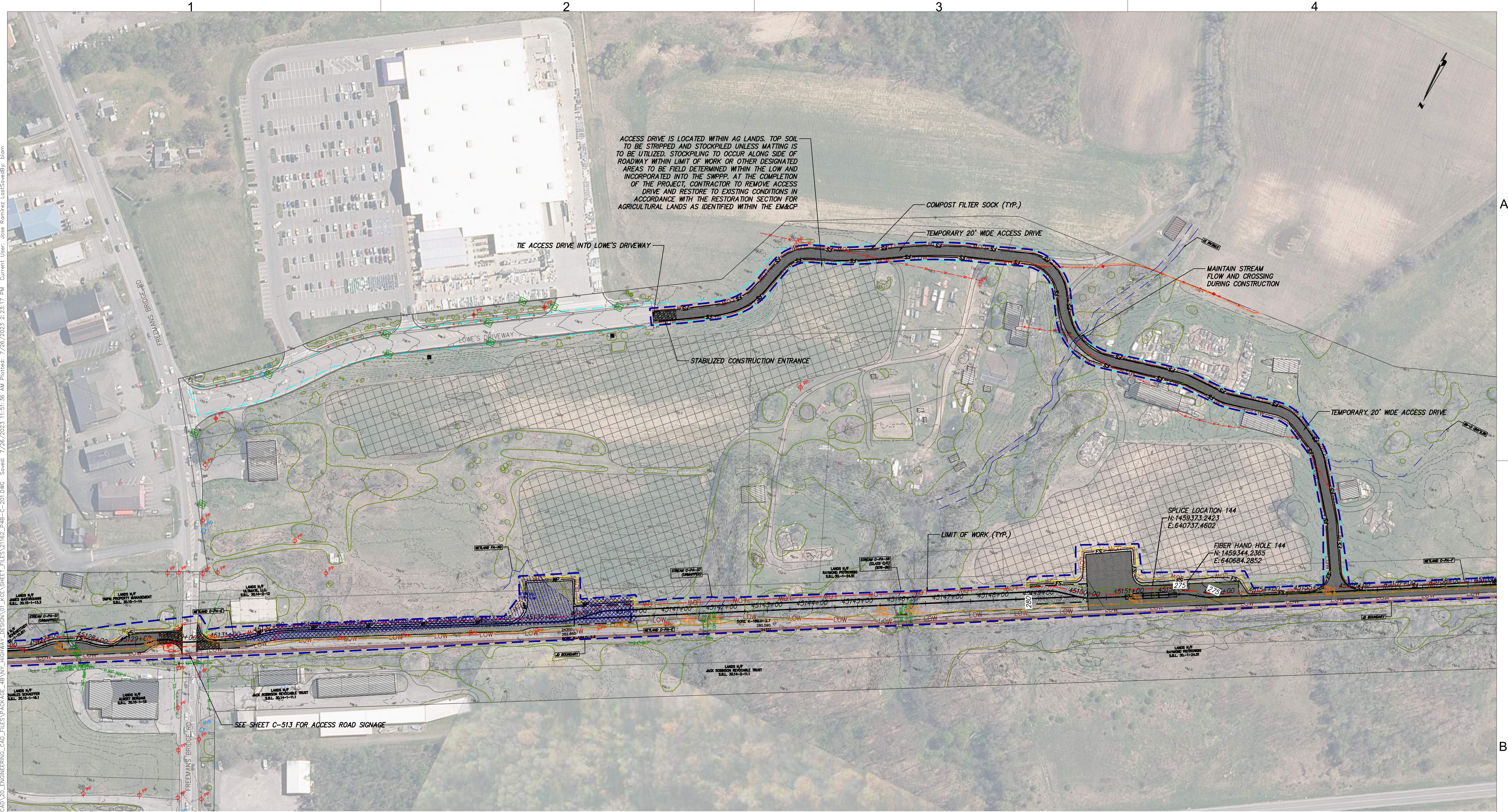
A horizontal scale bar with a black and white alternating pattern. It is labeled "Scale in feet" below the bar. The bar has markings at 0, 50, and 100 feet.



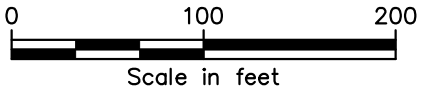












TEMP ACCESS ROAD 1 OF 3  
SCALE: 1" = 100'





IT IS A VIOLATION OF LAW FOR ANY PERSON, UNLESS THEY ARE ACTING UNDER THE DIRECTION OF A LICENSED PROFESSIONAL ENGINEER, ARCHITECT, LANDSCAPE ARCHITECT OR LAND SURVEYOR TO ALTER AN ITEM IN ANY WAY. IF AN ITEM BEARING THE STAMP OF A LICENSED PROFESSIONAL IS ALTERED, THE ALTERING ENGINEER, ARCHITECT, LANDSCAPE ARCHITECT OR LAND SURVEYOR SHALL STAMP THE DOCUMENT AND INCLUDE THE NOTATION "ALTERED BY" FOLLOWED BY THEIR SIGNATURE, THE DATE OF SUCH ALTERATION, AND A SPECIFIC DESCRIPTION OF THE ALTERATION.

No.	DATE	SUBMITTAL / REVISION DESCRIPTION	DB	APP
0	07/28/2023	ISSUED FOR CONSTRUCTION SUBMISSION	DM	BD

CHAMPLAIN HUDSON POWER EXPRESS  
SEGMENT 7 (PACKAGE 4B) - CSX - PAN AM SOUTHERN  
TEMP ACCESS ROAD  
1 OF 3

DRAWN BY: DM

DESIGNED BY: DM

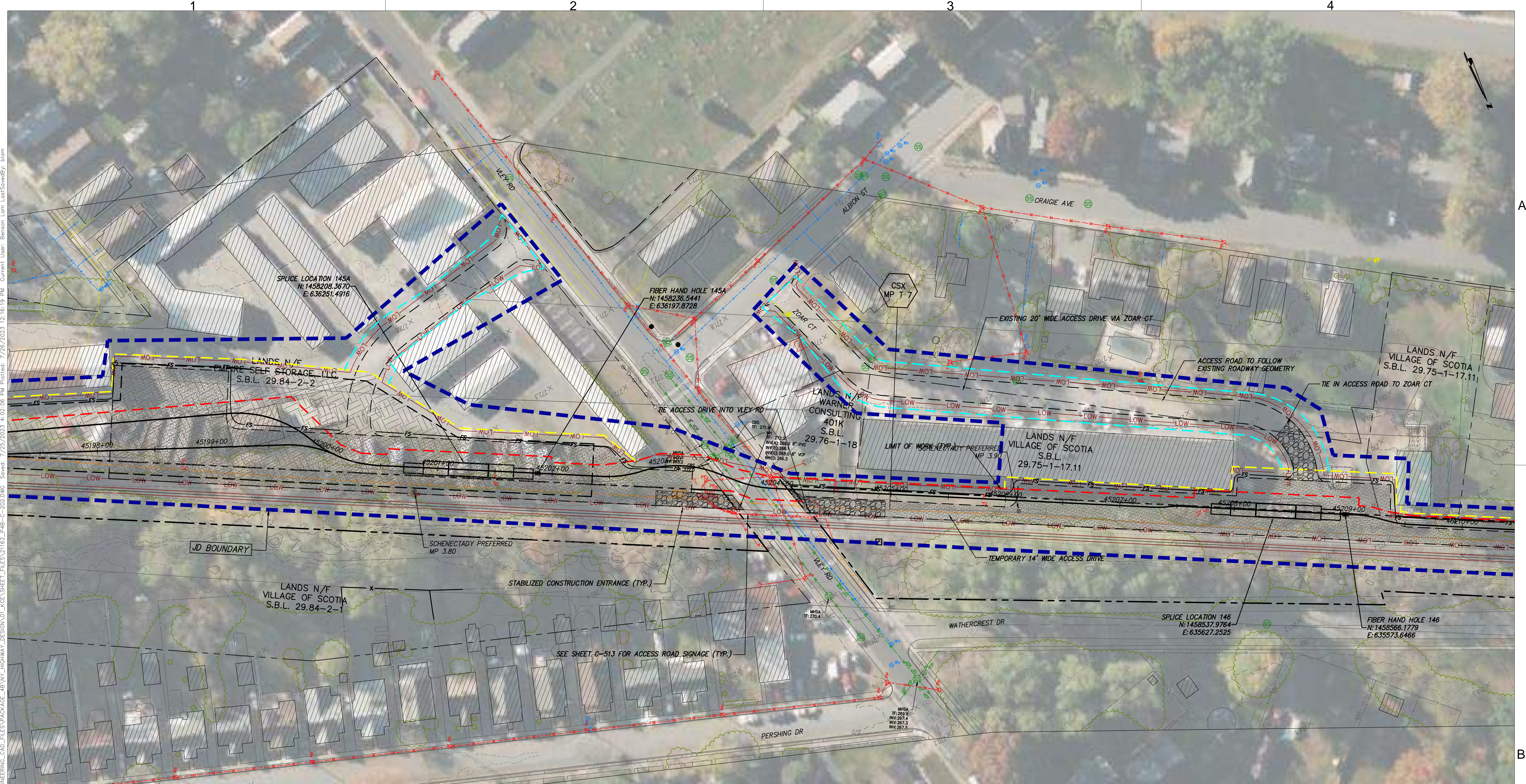
APPROVED BY: BD

SCALE: AS NOTED  
REV. NO. 0

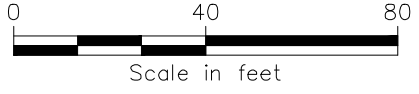
KIEWIT PROJECT NO.  
21162  
KC PROJECT NO.  
120174  
DRAWING NO.  
**C-201**





DATE  
07/26/2023  
OF





TEMP ACCESS ROAD 2 OF 3  
SCALE: 1" = 40'





IT IS A VIOLATION OF LAW FOR ANY PERSON, UNLESS THEY ARE ACTING UNDER THE DIRECTION OF A LICENSED PROFESSIONAL ENGINEER, ARCHITECT, LANDSCAPE ARCHITECT OR LAND SURVEYOR TO ALTER AN ITEM IN ANY WAY. IF AN ITEM BEARING THE STAMP OF A LICENSED PROFESSIONAL IS ALTERED, THE ALTERING ENGINEER, ARCHITECT, LANDSCAPE ARCHITECT OR LAND SURVEYOR SHALL STAMP THE DOCUMENT AND INCLUDE THE NOTATION "ALTERED BY" FOLLOWED BY THEIR SIGNATURE, THE DATE OF SUCH ALTERATION, AND A SPECIFIC DESCRIPTION OF THE ALTERATION.

No.	DATE	SUBMITTAL / REVISION DESCRIPTION	DB	APP
0	07/28/2023	ISSUED FOR CONSTRUCTION SUBMISSION	DM	BD

CHAMPLAIN HUDSON POWER EXPRESS  
SEGMENT 7 (PACKAGE 4B) - CSX - PAN AM SOUTHERN  
TEMP ACCESS ROAD  
2 OF 3

DRAWN BY: DM

DESIGNED BY: DM

APPROVED BY: BD

SCALE AS NOTED

DATE 07/26/2023

KIEWIT PROJECT NO. 21162  
KC PROJECT NO. 120174  
DRAWING NO. C-202

SH.NO. OF