

Champlain Hudson Power Express

Kiewit

Engineering and Land Surveying, P.C.

STATE OF NEW YORK
PROFESSIONAL ENGINEER
102293

IT IS A VIOLATION OF LAW FOR ANY PERSON, UNLESS THEY ARE ACTING UNDER THE DIRECTION OF A LICENSED PROFESSIONAL ENGINEER, ARCHITECT, LANDSCAPE ARCHITECT OR LAND SURVEYOR TO ALTER AN ITEM IN ANY WAY. IF AN ITEM BEARING THE STAMP OF A LICENSED PROFESSIONAL IS ALTERED, THE ALTERING ENGINEER, ARCHITECT, LANDSCAPE ARCHITECT OR LAND SURVEYOR SHALL STAMP THE DOCUMENT AND INCLUDE THE NOTATION "ALTERED BY" FOLLOWED BY THEIR SIGNATURE, THE DATE OF SUCH ALTERATION, AND A SPECIFIC DESCRIPTION OF THE ALTERATION.

No.	DATE	SUBMITTAL / REVISION DESCRIPTION	DB	APP
0	08/03/2023	ISSUED FOR CONSTRUCTION SUBMISSION	BL	SL

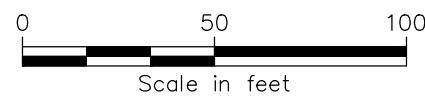
CHAMPLAIN HUDSON POWER EXPRESS
SEGMENT 6 (PACKAGE 4A) - CP: BALLSTON TO GLENVILLE
EROSION AND SEDIMENT CONTROL PLAN
STA. 40338+00 TO STA. 40368+00

DRAWN BY:	DESIGNED BY:	APPROVED BY:	SCALE	AS NOTED	DATE
BL	BL	SL	REV. NO.	0	08/03/2023

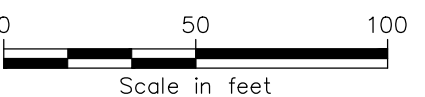
KIEWIT PROJECT NO.	KC PROJECT NO.	DRAWING NO.
21162	120174	C-412

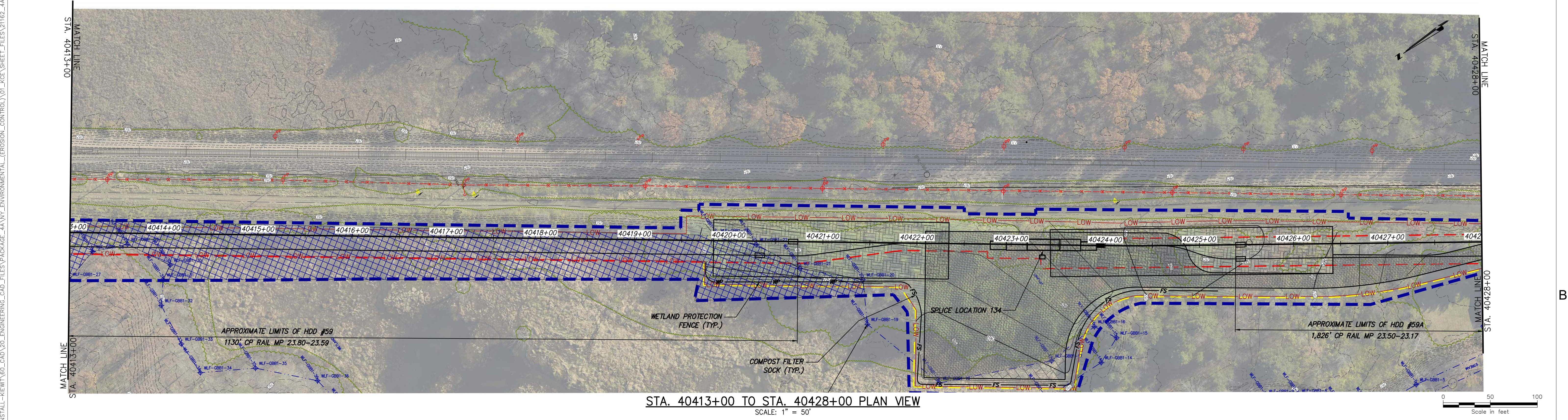
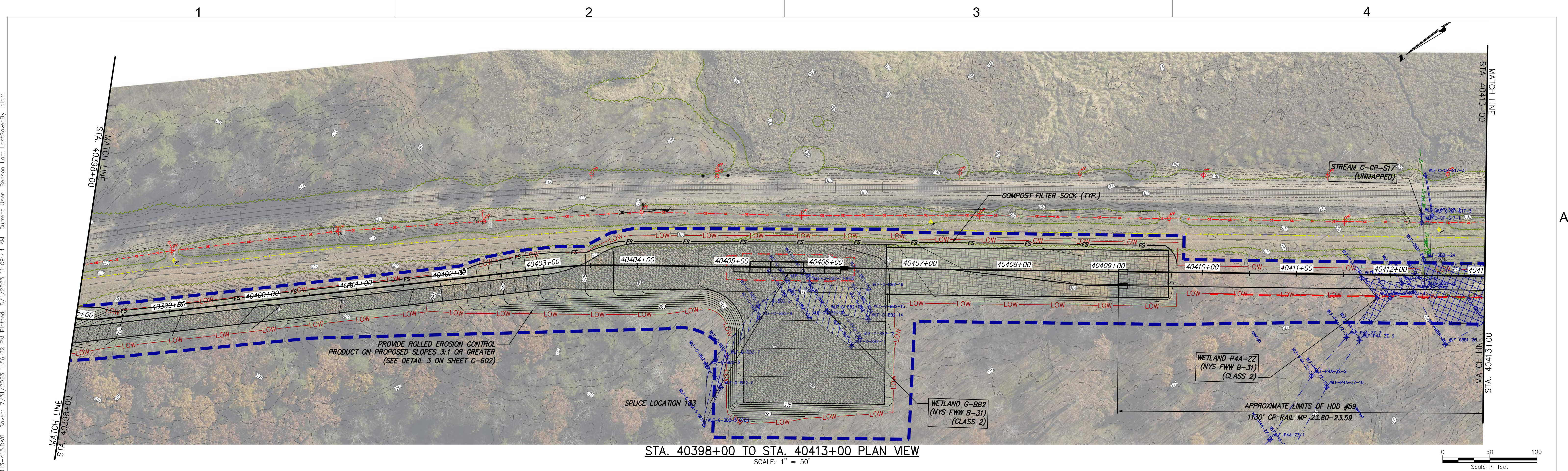



SCALE: 1" = 50'




SCALE: 1" = 50'









Champlain Hudson
Power Express



Kiewit



Engineering and
Land Surveying, P.C.



STATE OF NEW YORK
SEAN LAMBERT
102293
REGISTERED PROFESSIONAL ENGINEER

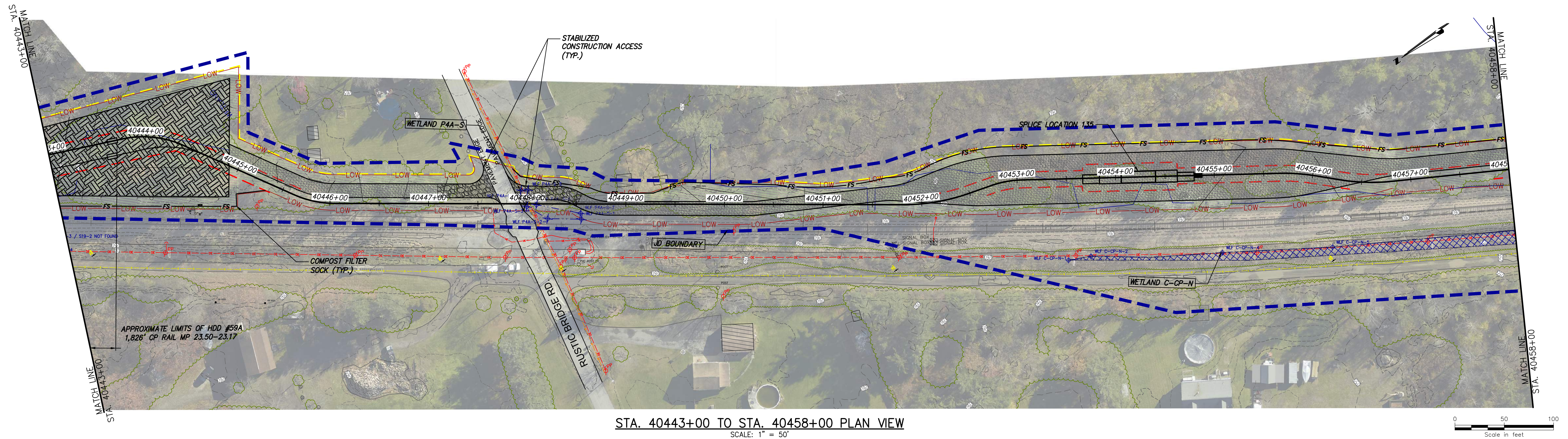
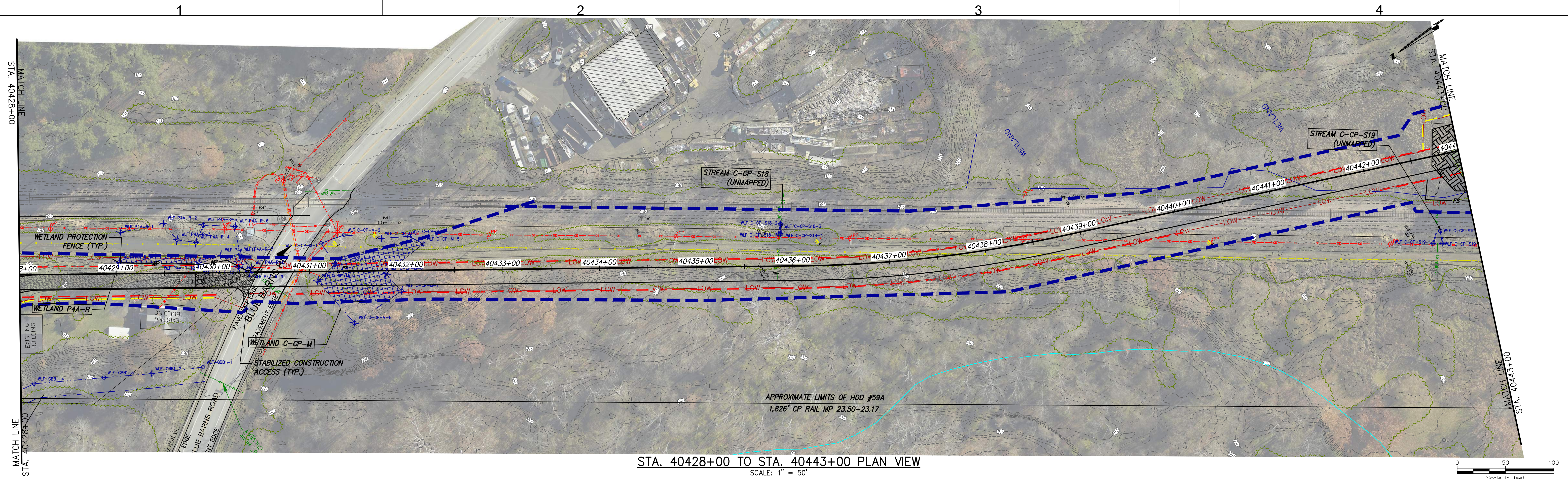
IT IS A VIOLATION OF LAW FOR ANY PERSON, UNLESS THEY ARE ACTING UNDER THE DIRECTION OF A LICENSED PROFESSIONAL ENGINEER, ARCHITECT, LANDSCAPE ARCHITECT OR LAND SURVEYOR TO ALTER AN ITEM IN ANY WAY. IF AN ITEM BEARING THE STAMP OF A LICENSED PROFESSIONAL IS ALTERED, THE ALTERING ENGINEER, ARCHITECT, LANDSCAPE ARCHITECT OR LAND SURVEYOR SHALL STAMP THE DOCUMENT AND INCLUDE THE NOTATION "ALTERED BY" FOLLOWED BY THEIR SIGNATURE, THE DATE OF SUCH ALTERATION, AND A SPECIFIC DESCRIPTION OF THE ALTERATION.

No.	DATE	SUBMITTAL / REVISION DESCRIPTION	DB	APP
0	08/03/2023	ISSUED FOR CONSTRUCTION SUBMISSION	BL	SL

CHAMPLAIN HUDSON POWER EXPRESS
SEGMENT 6 (PACKAGE 4A) - CP: BALLSTON TO GLENVILLE
EROSION AND SEDIMENT CONTROL PLAN
STA. 40398+00 TO STA. 40428+00

DRAWN BY:	BL	DESIGNED BY:	BL	APPROVED BY:	SL	SCALE:	AS NOTED	DATE:	08/03/2023
						REV. NO.	0	SH.NO.	OF

KIEWIT PROJECT NO.	21162
KC PROJECT NO.	120174
DRAWING NO.	C-414



						CHAMPLAIN HUDSON POWER EXPRESS SEGMENT 6 (PACKAGE 4A) - CP: BALLSTON TO GLENVILLE EROSION AND SEDIMENT CONTROL PLAN STA. 40428+00 TO STA. 40458+00						KIEWIT PROJECT NO. 21162			
												KC PROJECT NO. 120174			
												DRAWING NO.			
												C-415			
0	08/03/2023	ISSUED FOR CONSTRUCTION SUBMISSION		BL	SL										
No.	DATE	SUBMITTAL / REVISION DESCRIPTION		DB	APP	DRAWN BY:	BL	DESIGNED BY:	BL	APPROVED BY:	SL	SCALE	AS NOTED	DATE	08/03/2023
												REV. NO.	0	SH.NO.	OF