

Champlain Hudson Power Express

Kiewit

Engineering and Land Surveying, P.C.

SEAN LEMAHY
LICENSED PROFESSIONAL ENGINEER
102293

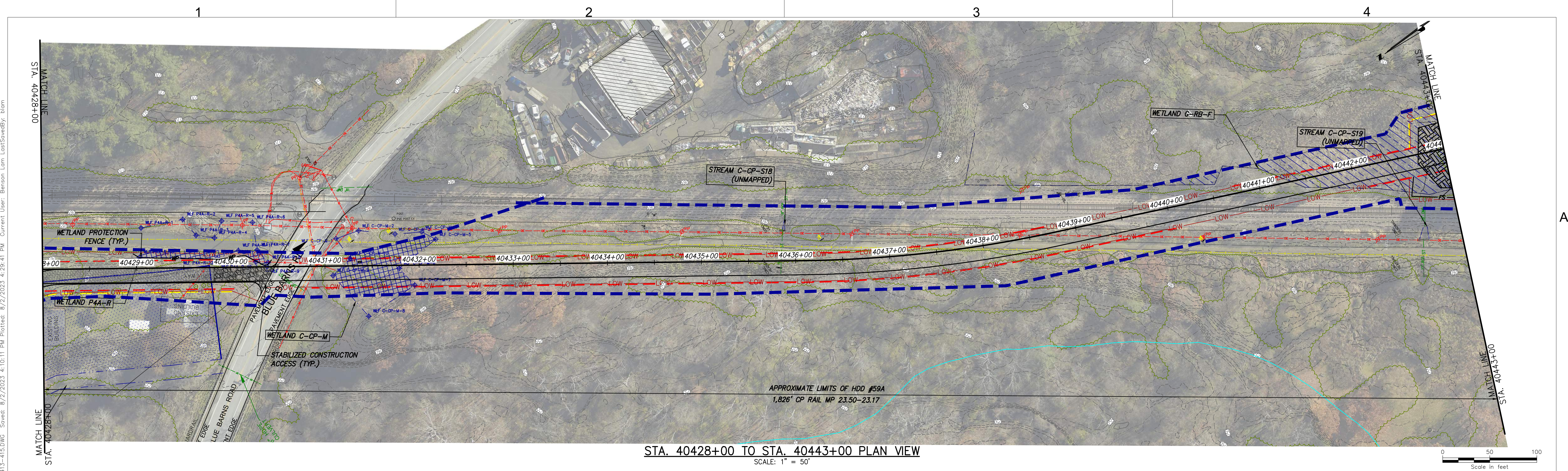
IT IS A VIOLATION OF LAW FOR ANY PERSON, UNLESS THEY ARE ACTING UNDER THE DIRECTION OF A LICENSED PROFESSIONAL ENGINEER, ARCHITECT, LANDSCAPE ARCHITECT OR LAND SURVEYOR TO ALTER AN ITEM IN ANY WAY. IF AN ITEM BEARING THE STAMP OF A LICENSED PROFESSIONAL IS ALTERED, THE ALTERING ENGINEER, ARCHITECT, LANDSCAPE ARCHITECT OR LAND SURVEYOR SHALL STAMP THE DOCUMENT AND INCLUDE THE NOTATION "ALTERED BY" FOLLOWED BY THEIR SIGNATURE, THE DATE OF SUCH ALTERATION, AND A SPECIFIC DESCRIPTION OF THE ALTERATION.

No.	DATE	SUBMITTAL / REVISION DESCRIPTION	DB	APP
0	08/03/2023	ISSUED FOR CONSTRUCTION SUBMISSION	BL	SL

CHAMPLAIN HUDSON POWER EXPRESS
SEGMENT 6 (PACKAGE 4A) - CP: BALLSTON TO GLENVILLE
EROSION AND SEDIMENT CONTROL PLAN
STA. 40398+00 TO STA. 40428+00

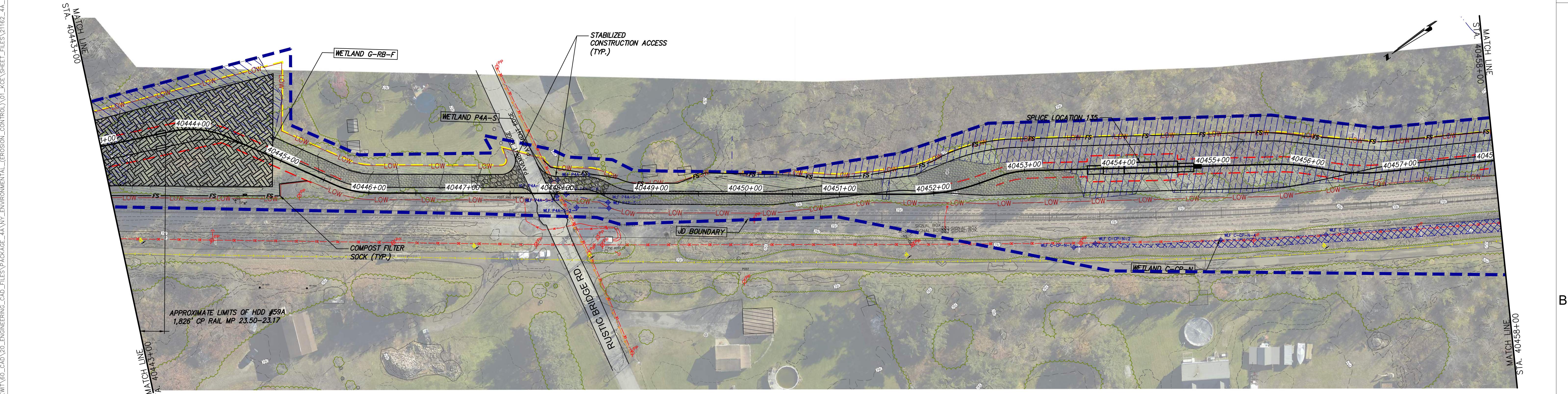
DRAWN BY:	BL	DESIGNED BY:	BL	APPROVED BY:	SL	SCALE	AS NOTED
						REV. NO.	0

KIEWIT PROJECT NO.	21162
KC PROJECT NO.	120174
DRAWING NO.	C-414
DATE	08/03/2023
SH.NO.	OF







STA. 40428+00 TO STA. 40443+00 PLAN VIEW

SCALE: 1" = 50'



STA. 40443+00 TO STA. 40458+00 PLAN VIEW

SCALE: 1" = 50'



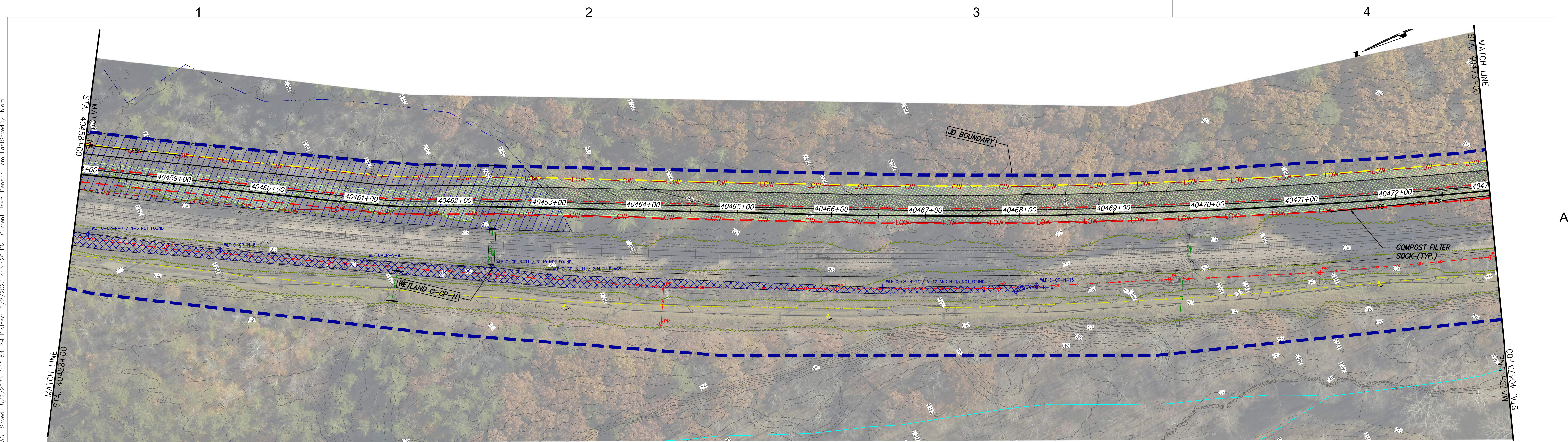
IT IS A VIOLATION OF LAW FOR ANY PERSON, UNLESS THEY ARE ACTING UNDER THE DIRECTION OF A LICENSED PROFESSIONAL ENGINEER, ARCHITECT, LANDSCAPE ARCHITECT OR LAND SURVEYOR TO ALTER AN ITEM IN ANY WAY. IF AN ITEM BEARING THE STAMP OF A LICENSED PROFESSIONAL IS ALTERED, THE ALTERING ENGINEER, ARCHITECT, LANDSCAPE ARCHITECT OR LAND SURVEYOR SHALL STAMP THE DOCUMENT AND INCLUDE THE NOTATION "ALTERED BY" FOLLOWED BY THEIR SIGNATURE, THE DATE OF SUCH ALTERATION, AND A SPECIFIC DESCRIPTION OF THE ALTERATION.

0	08/03/2023	ISSUED FOR CONSTRUCTION SUBMISSION	BL	SL
No.	DATE	SUBMITTAL / REVISION DESCRIPTION	DB	APP

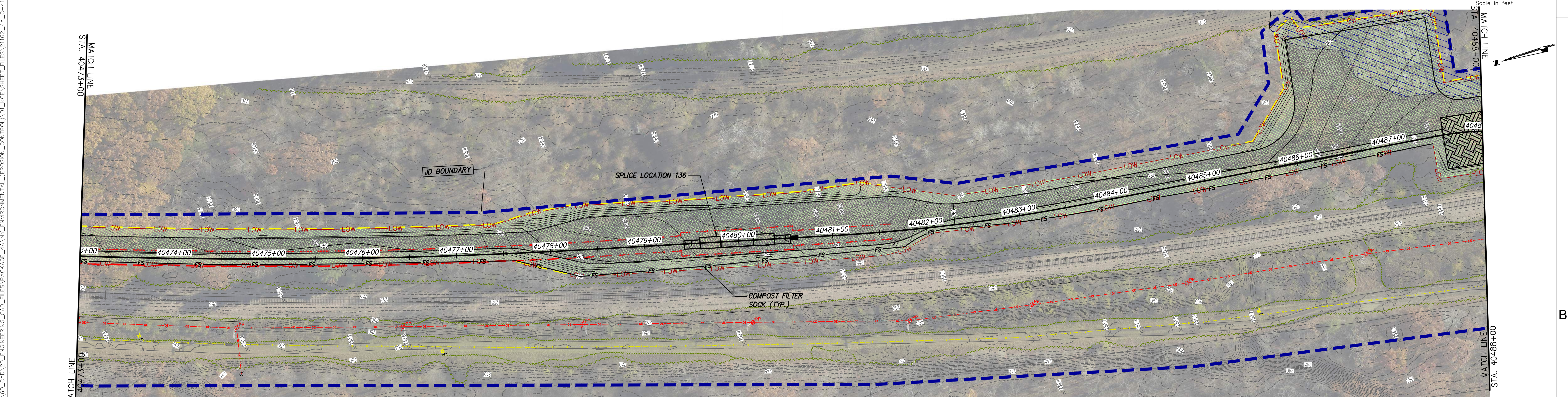
CHAMPLAIN HUDSON POWER EXPRESS
SEGMENT 6 (PACKAGE 4A) - CP: BALLSTON TO GLENVILLE
EROSION AND SEDIMENT CONTROL PLAN
STA. 40428+00 TO STA. 40458+00

C-415


KIEWIT PROJECT NO. 21162		KC PROJECT NO. 120174		DRAWING NO. C-415	
DRAWN BY:	BL	DESIGNED BY:	BL	APPROVED BY:	SL
SCALE		AS NOTED		DATE	
REV. NO.		0		SH.NO. OF	




STA. 40458+00 TO STA. 40473+00 PLAN VIEW
SCALE: 1" = 50'



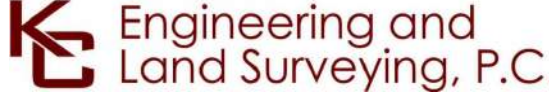
STA. 40473+00 TO STA. 40488+00 PLAN VIEW
SCALE: 1" = 50'




Champlain Hudson
Power Express



Kiewit



Engineering and
Land Surveying, P.C.



STATE OF NEW YORK
SEAN LEWIS
102293
LICENSED PROFESSIONAL ENGINEER

IT IS A VIOLATION OF LAW FOR ANY PERSON, UNLESS THEY ARE ACTING UNDER THE DIRECTION OF A LICENSED PROFESSIONAL ENGINEER, ARCHITECT, LANDSCAPE ARCHITECT OR LAND SURVEYOR TO ALTER AN ITEM IN ANY WAY. IF AN ITEM BEARING THE STAMP OF A LICENSED PROFESSIONAL IS ALTERED, THE ALTERING ENGINEER, ARCHITECT, LANDSCAPE ARCHITECT OR LAND SURVEYOR SHALL STAMP THE DOCUMENT AND INCLUDE THE NOTATION "ALTERED BY" FOLLOWED BY THEIR SIGNATURE, THE DATE OF SUCH ALTERATION, AND A SPECIFIC DESCRIPTION OF THE ALTERATION.

No.	DATE	SUBMITTAL / REVISION DESCRIPTION	DB	APP
0	08/03/2023	ISSUED FOR CONSTRUCTION SUBMISSION	BL	SL

CHAMPLAIN HUDSON POWER EXPRESS
SEGMENT 6 (PACKAGE 4A) - CP: BALLSTON TO GLENVILLE
EROSION AND SEDIMENT CONTROL PLAN
STA. 40458+00 TO STA. 40488+00

C-416

DRAWN BY:	BL	DESIGNED BY:	BL	APPROVED BY:	SL	SCALE:	AS NOTED	DATE:	08/03/2023
						REV. NO.	0	SH.NO.	OF

KIEWIT PROJECT NO.	21162
KC PROJECT NO.	120174
DRAWING NO.	