

CONSTRUCTION NOTICE FOR HUDSON RIVER PRE-LAY MATTRESSING SEGMENT OF THE CHAMPLAIN HUDSON POWER EXPRESS PROJECT

On or about March 1, 2024, the Champlain Hudson Power Express (“CHPE”) Project intends to begin work to install submarine utility protections in the Hudson River (pre-lay mattressing) in accordance with CHPE’s Environmental Management & Construction Plan (“EM&CP”) for Segment 19A, approved by the New York State Public Service Commission (the “Commission”) on October 13, 2023. Upon receipt of a Notice to Proceed with Construction letter sent by the New York State Department of Public Service’s Office of Electric, Gas and Water, CHPE will be authorized to commence construction activities for the approved Segment.

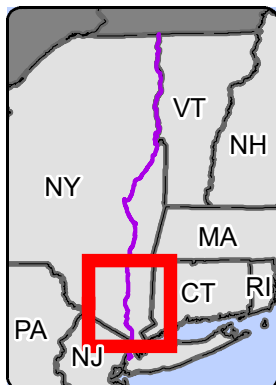
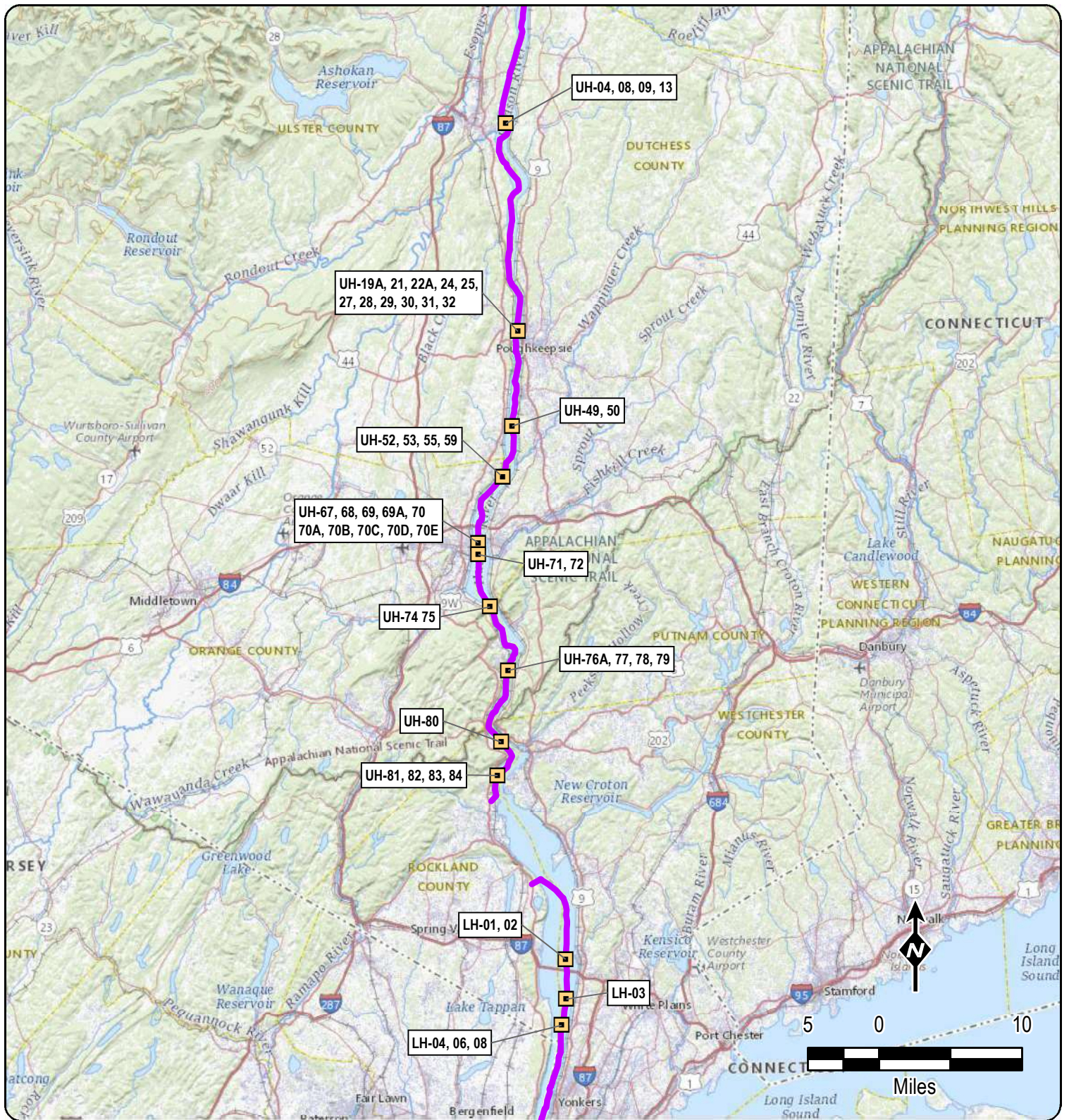
The scope of work for this Segment includes the mobilization of vessels and equipment, and the construction and installation of concrete mattresses at utility crossing locations to protect co-located infrastructure in preparation for future submarine cable installation by CHPE in the Hudson River. A map showing the general locations of utility crossings is attached hereto, though not all identified crossings will be completed at this time, and some utility protection work will occur later in 2024 in connection with cable installation efforts. Work activities will generally occur during daylight hours to the extent practicable; where nighttime work is needed, noise and visual impact mitigation measures will be employed as needed to reduce impacts to nearby sensitive receptors.

CHPE has established a toll-free number for questions regarding the Project, including a complaint resolution plan for issues arising during construction: 1-800-991-CHPE (2473). Questions or requests for further information can be directed to: publicoutreach@chpexpress.com or by mail to Molly Hollister, WSP USA, One Pennsylvania Plaza, New York, New York 10119.


Facility construction falls under the jurisdiction of the Commission, which is responsible for enforcing compliance with environmental and construction conditions, and which may be contacted through Matthew Smith, Office of Electric, Gas and Water, New York State Department of Public Service, Three Empire State Plaza, Albany, NY 12223, via telephone at (518)474-8702 or email at matthew.smith@dps.ny.gov.

Details of the planned work locations, including construction drawings showing in detail the approved Segment, are available on the Project website at: <https://chpexpress.com/overview-of-public-documents/environmental-management-construction-plan/>. The full Commission docket for the Project can be accessed via the Commission’s website at: <http://documents.dps.ny.gov/public/MatterManagement/CaseMaster.aspx?MatterCaseNo=10-T-0139>.

Paper copies of the Segment EM&CP submissions will be available for viewing at the following local document repositories: Kingston Library, 55 Franklin Street, Kingston, NY 12401; Adriance Memorial Library 93 Market Street, Poughkeepsie, NY 12601; Cornwall Public Library 395 Hudson Street, Cornwall, NY 12518; Greenburgh Public Library, 300 Tarrytown Road, Elmsford, NY 10523; and Tomkins Cove Public Library, 419 N. Liberty Drive, Tomkins Cove, NY 10986.



- Pre-Lay Concrete Mattress Protection Locations
- Route



CHAMPLAIN HUDSON POWER EXPRESS
Hudson River Pre-Lay
Mattress Utility Protection EM&CP
Overview
Figure 1

Created: 7/31/2023