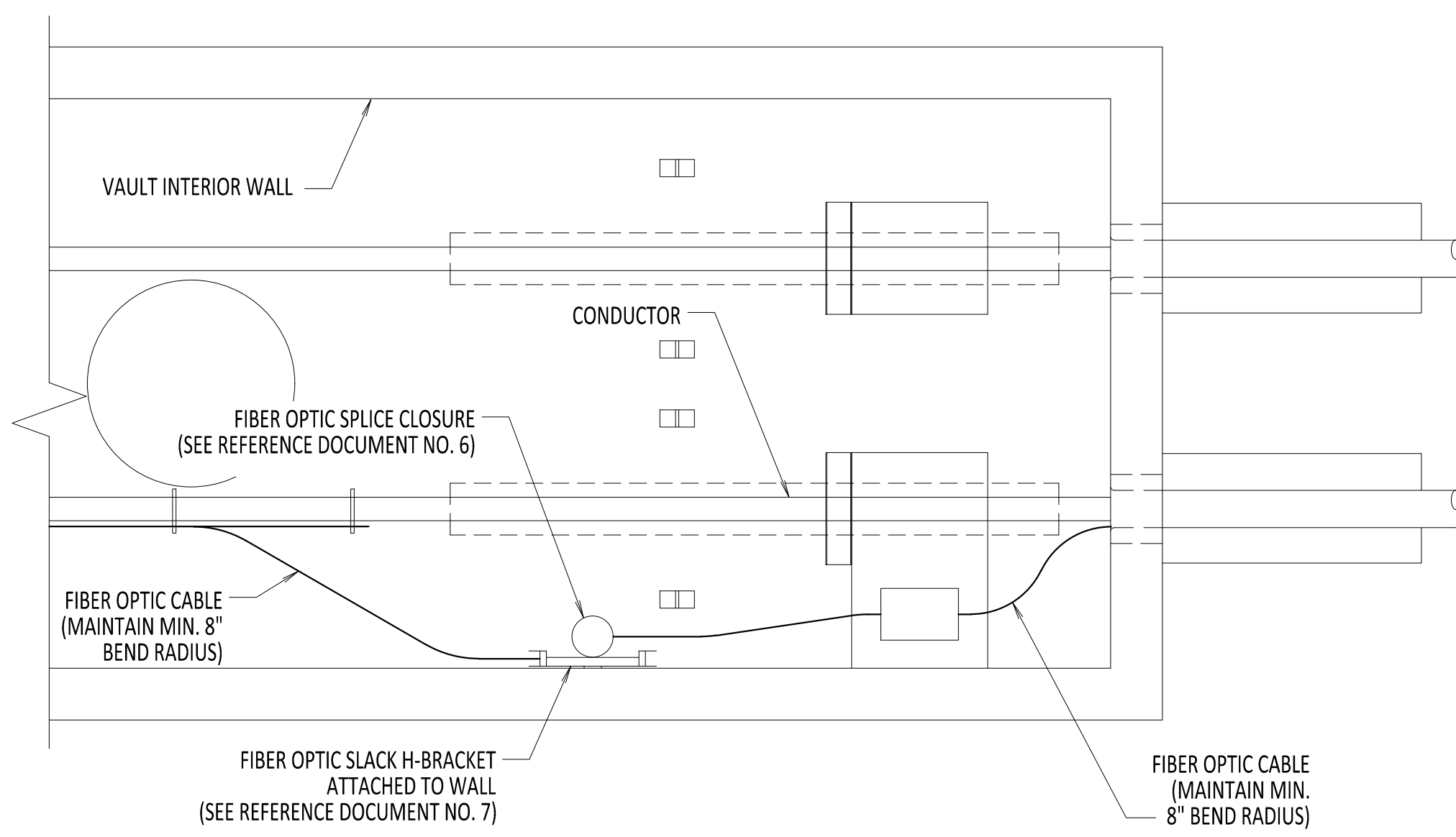
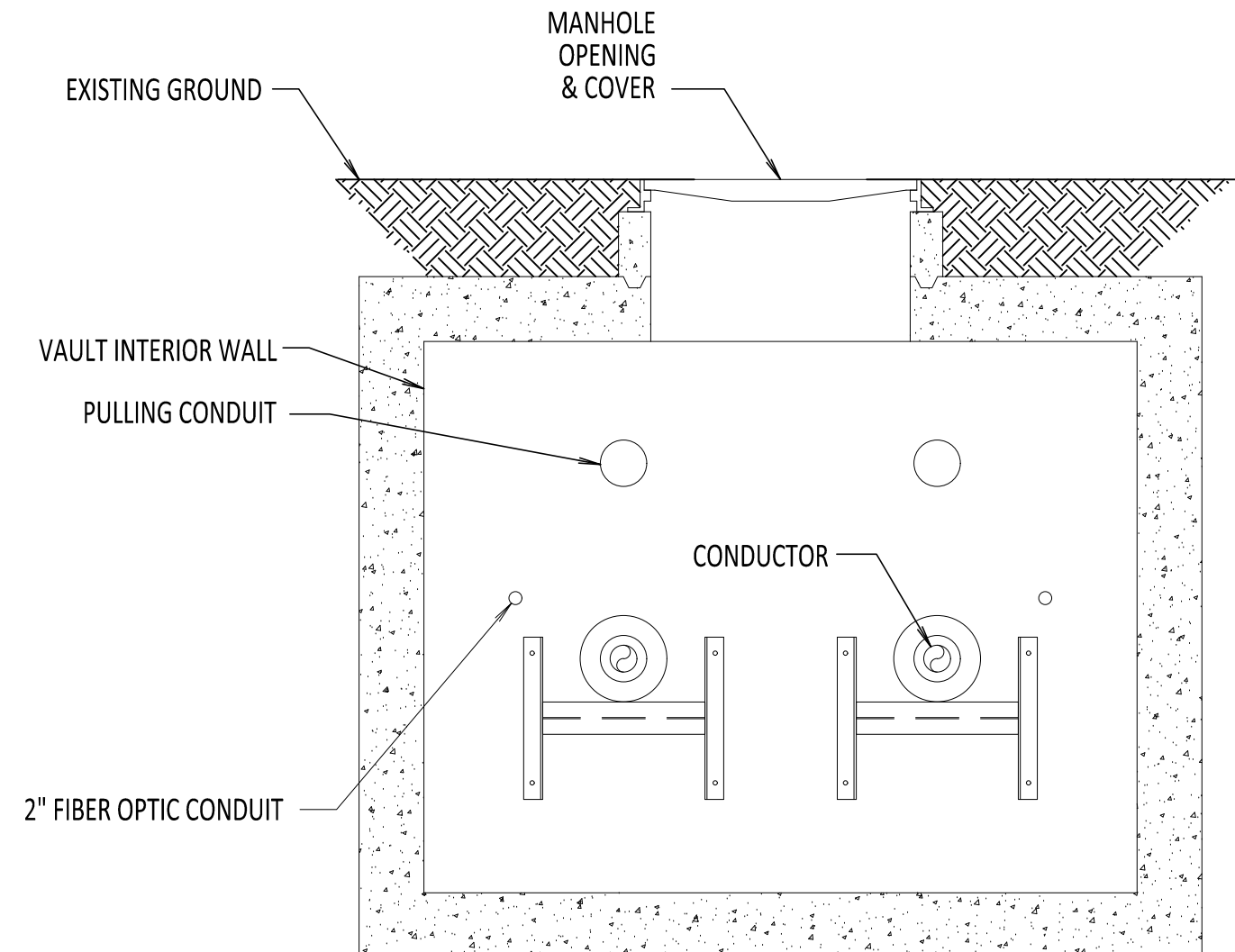


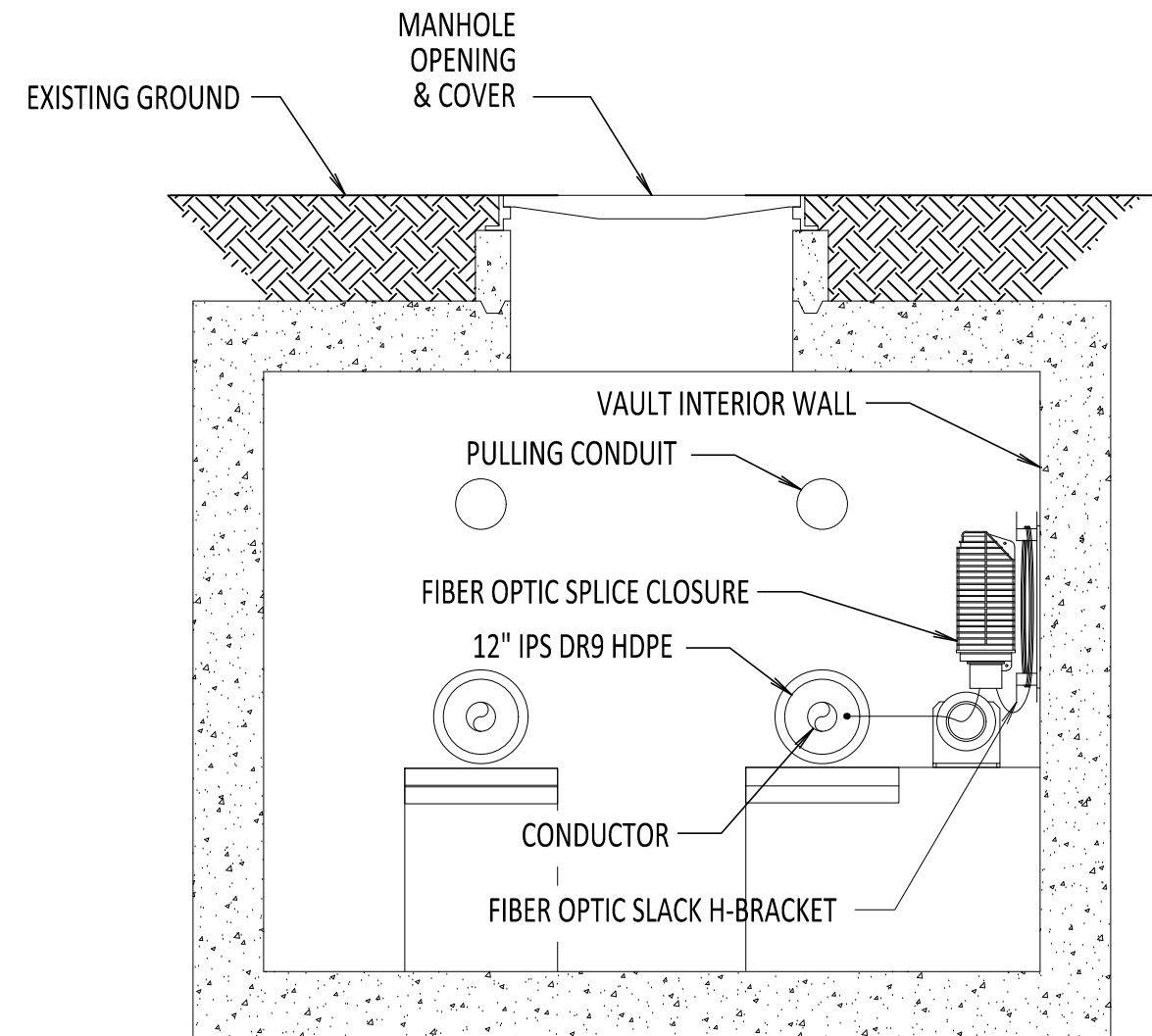
File: R:\INFO\IPD\USG STANDARDS\UNDERGROUND SHAREPOINT\PROJECTS\CHPE 400KV DC WORKING FOLDER\DWG\C-850-TRANSITION_VAULT.DWG Saved: 5/4/2023 9:22:58 AM Plotted: 6/5/2023 9:34:12 AM Current User: Douglas.Mason LastSavedBy: Douglas.Mason



PARTIAL TRANSITION VAULT PLAN VIEW
SCALE: 3/8" = 1'-0"



SECTION A-A
SCALE: 3/8" = 1'-0"



SECTION B-B
SCALE: 3/8" = 1'-0"

NOTES:

1.

NKT TO LASH/CLAMP FIBER OPTIC CABLE AND ATTACH SPLICE CLOSURES.

2.

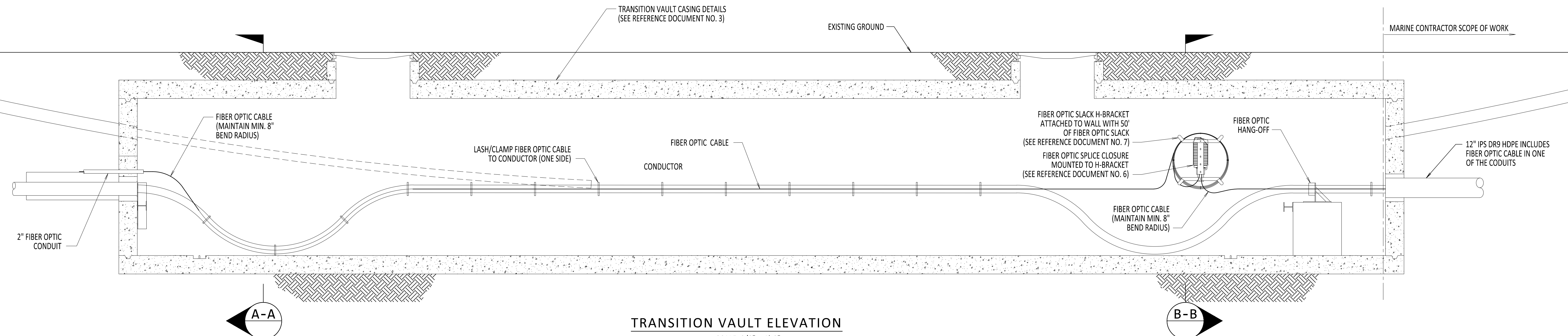
FIBER OPTIC CABLE SHALL FOLLOW THE NEGATIVE POLE HVDC CABLE NOTED ON THE PLAN AND PROFILE DRAWINGS, UNLESS OTHERWISE STATED. IN THE CASE THAT THE FIBER OPTIC CABLE ENTRY IS NOT ALIGNED WITH THE NEGATIVE POLE, THE FIBER OPTIC CONFIGURATION HEREIN SHALL BE MIRRORED ON THE OPPOSITE SIDE.

3.

SEE REFERENCE DOCUMENT 5 FOR DETAILS ON ROUTING FIBER TO DTS HUT.

REFERENCE DOCUMENTS

LIST NO.	DOCUMENT NAME	DOCUMENT NO.
1	TRANSITION VAULT PLAN AND ELEVATION	S-730
2	TRANSITION VAULT SECTION AND DETAILS	S-731
3	TRANSITION VAULT EXTENDED SNAKING DETAILS	C-805
4	TRANSITION VAULT GROUNDING DETAILS	C-806
5	DST HUT CONNECTION FIBER OPTIC SPLICE AND HANDHOLE	C-851
6	FIBER OPTIC SPLICE DETAILS	C-855
7	FIBER OPTIC H-FRAME BRACKET DETAILS	C-856



TRANSITION VAULT ELEVATION
SCALE: 3/8" = 1'-0"

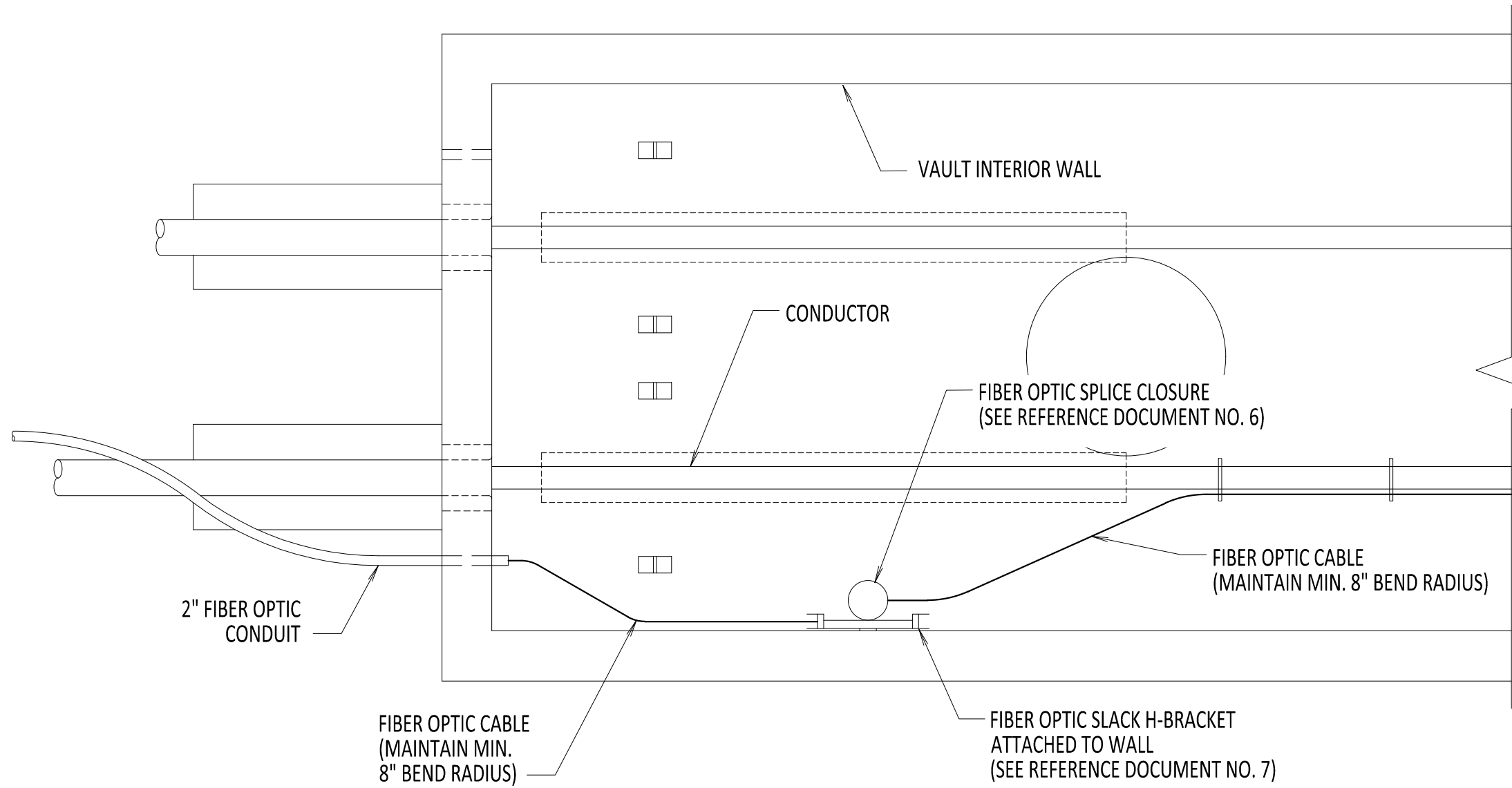


IT IS A VIOLATION OF LAW FOR ANY PERSON, UNLESS THEY ARE ACTING UNDER THE DIRECTION OF A LICENSED PROFESSIONAL ENGINEER, ARCHITECT, LANDSCAPE ARCHITECT OR LAND SURVEYOR TO ALTER AN ITEM IN ANY WAY. IF AN ITEM BEARING THE STAMP OF A LICENSED PROFESSIONAL IS ALTERED, THE ALTERING ENGINEER, ARCHITECT, LANDSCAPE ARCHITECT OR LAND SURVEYOR SHALL STAMP THE DOCUMENT AND INCLUDE THE NOTATION "ALTERED BY" FOLLOWED BY THEIR SIGNATURE, THE DATE OF SUCH ALTERATION, AND A SPECIFIC DESCRIPTION OF THE ALTERATION.

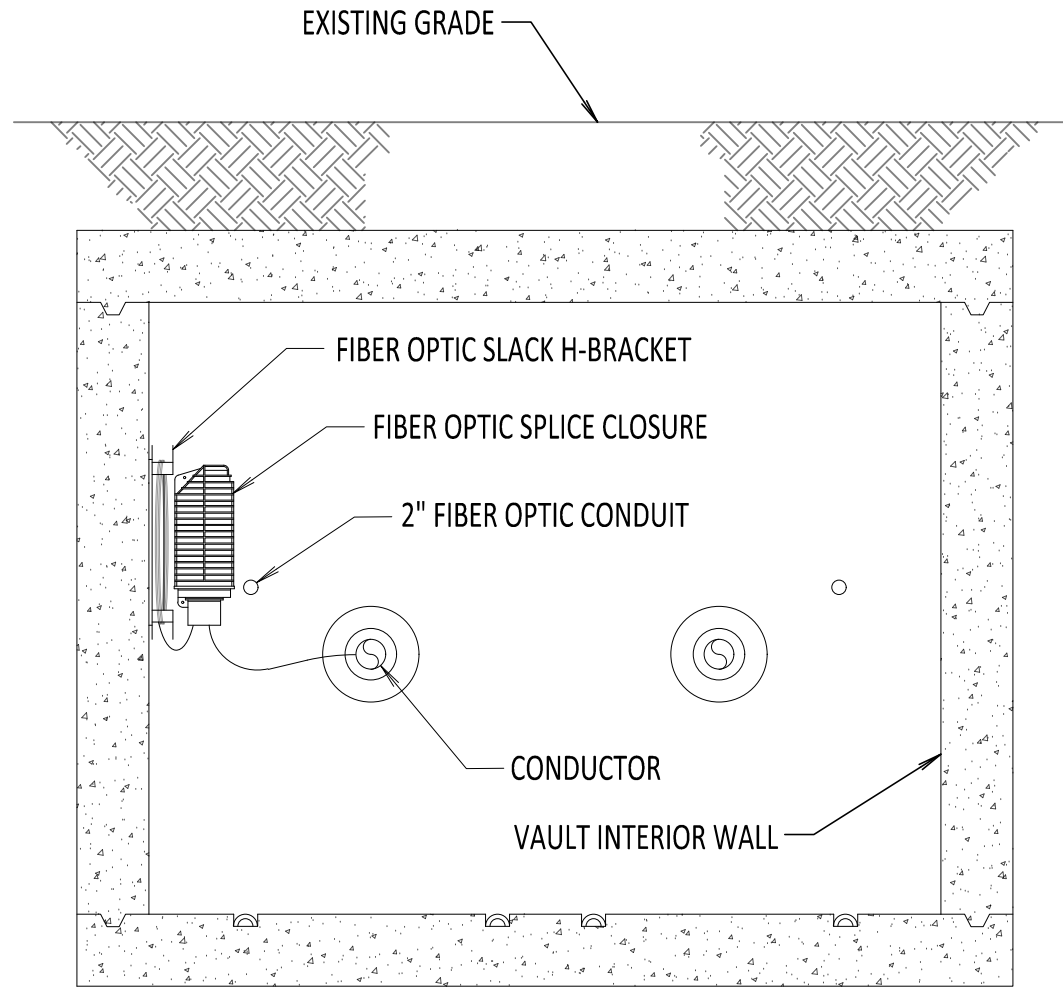
0	06/08/2023	ISSUED FOR CONSTRUCTION SUBMISSION		DLM	ASM
No.	DATE	SUBMITTAL / REVISION DESCRIPTION		DB	APP

CHAMPLAIN HUDSON POWER EXPRESS					KIEWIT PROJECT NO.
					21162
					CHA PROJECT NO.
					066076
					DRAWING NO.
					C-850
					DATE 06/08/2023
					SH.NO. OF
TRANSITION VAULT FIBER OPTIC DETAIL					
DRAWN BY:		DLM	DESIGNED BY:	NM	APPROVED BY:
			MK		SCALE
					REV. NO.
					0

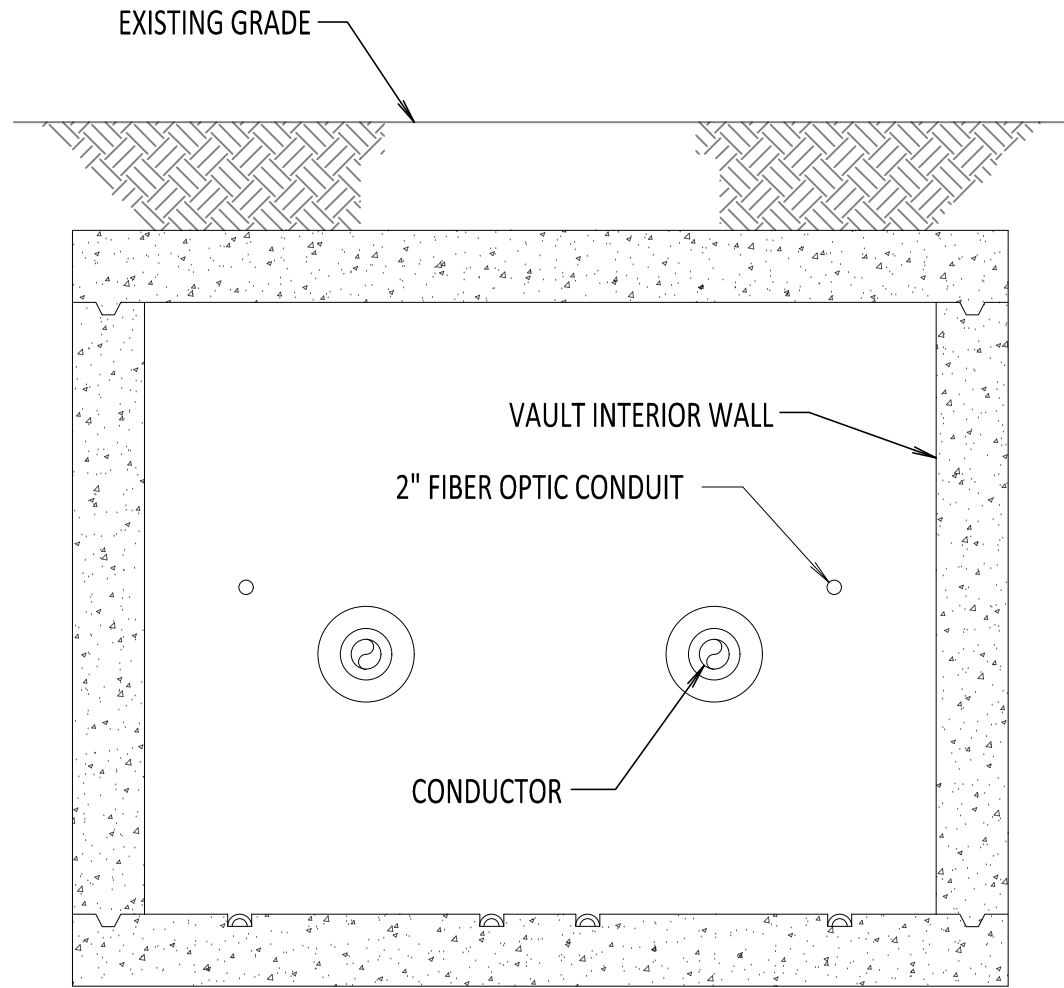
File: R:\INFO\PD\USG STANDARDS\UNDERGROUND SHAREPOINT\PROJECTS\CHPE 400KV DC WORKING FOLDER\DWG\C-852-ENCLOSED_VAULT.DWG Saved: 5/4/2023 9:28:34 AM Plotted: 6/5/2023 9:46:53 AM Current User: Douglas Mason LetSaveBy: Douglas Mason



ENCLOSED VAULT w/ FIBER OPTIC CABLE PLAN VIEW
SCALE: 3/8" = 1'-0"



SECTION A-A
SCALE: 3/8" = 1'-0"

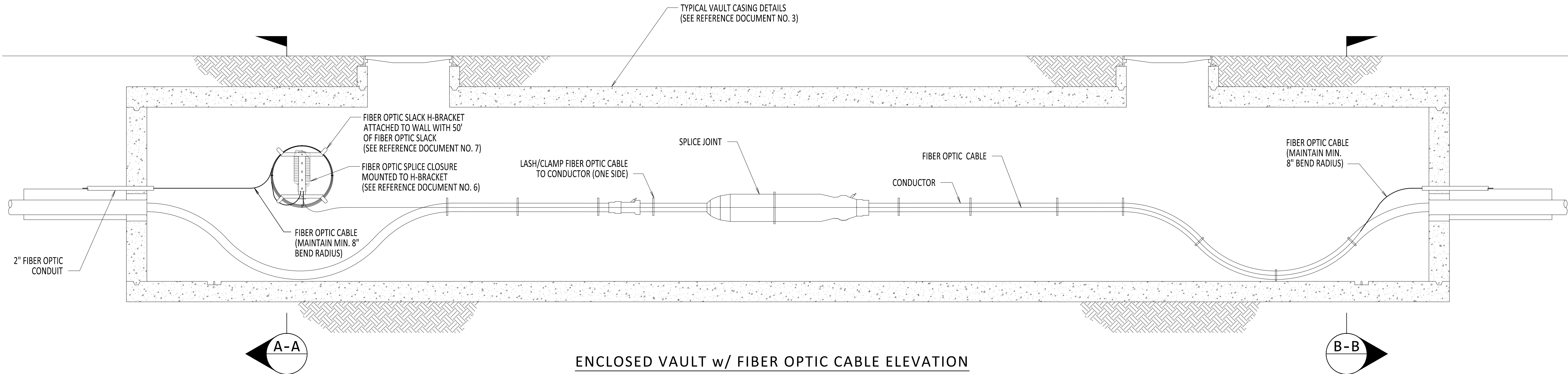


SECTION B-B
SCALE: 3/8" = 1'-0"

NOTES:

1. NKT TO LASH/CLAMP FIBER OPTIC CABLE AND ATTACH SPLICE CLOSURES AS NEEDED.
2. FIBER OPTIC CABLE SHALL FOLLOW THE NEGATIVE POLE HVDC CABLE NOTED ON THE PLAN AND PROFILE DRAWINGS, UNLESS OTHERWISE STATED. IN THE CASE THAT THE FIBER OPTIC CABLE ENTRY IS NOT ALIGNED WITH THE NEGATIVE POLE, THE FIBER OPTIC CONFIGURATION HEREIN SHALL BE MIRRORED ON THE OPPOSITE SIDE.
3. SPLICE CLOSURE ONLY AT SPECIFIED LOCATIONS. SEE PLAN AND PROFILE.
4. SEE REFERENCE DOCUMENT 5 FOR DETAILS ON ROUTING FIBER TO DTS HUT.

REFERENCE DOCUMENTS		
LIST NO.	DOCUMENT NAME	DOCUMENT NO.
1	SPLICE VAULT PLAN AND ELEVATION	S-700
2	SPLICE VAULT SECTION AND DETAILS	S-701
3	TYPICAL VAULT DETAILS	C-802
4	TYPICAL VAULT GROUNDING DETAILS	C-803
5	DST HUT CONNECTION FIBER OPTIC SPLICE AND HANDHOLE	C-851
6	FIBER OPTIC SPLICE DETAILS	C-855
7	FIBER OPTIC H-FRAME BRACKET DETAILS	C-856



ENCLOSED VAULT w/ FIBER OPTIC CABLE ELEVATION
SCALE: 3/8" = 1'-0"



IT IS A VIOLATION OF LAW FOR ANY PERSON, UNLESS THEY ARE ACTING UNDER THE DIRECTION OF A LICENSED PROFESSIONAL ENGINEER, ARCHITECT, LANDSCAPE ARCHITECT OR LAND SURVEYOR TO ALTER AN ITEM IN ANY WAY. IF AN ITEM BEARING THE STAMP OF A LICENSED PROFESSIONAL IS ALTERED, THE ALTERING ENGINEER, ARCHITECT, LANDSCAPE ARCHITECT OR LAND SURVEYOR SHALL STAMP THE DOCUMENT AND INCLUDE THE NOTATION "ALTERED BY" FOLLOWED BY THEIR SIGNATURE, THE DATE OF SUCH ALTERATION, AND A SPECIFIC DESCRIPTION OF THE ALTERATION.

0	06/08/2023	ISSUED FOR CONSTRUCTION SUBMISSION		DLM	ASM
No.	DATE	SUBMITTAL / REVISION DESCRIPTION		DB	APP

CHAMPLAIN HUDSON POWER EXPRESS

ENCLOSED VAULT
w/ FIBER OPTICS

DRAWN BY: DLM DESIGNED BY: NM APPROVED BY: MK SCALE: REV. NO. 0

KIEWIT PROJECT NO.	
21162	
CHA PROJECT NO.	
066076	
DRAWING NO.	
C-852	
DATE	06/08/2023
SH.NO.	OF

File: R:\INFO\PD\USA STANDARDS\UNDERGROUND SHAREPOINT\PROJECTS\CHPE 400KV DC WORKING FOLDER\DWG\C-855-FIBER-FIBER_OPTIC_SPLICE.DWG Saved: 6/5/2023 9:54:23 AM Plotted: 6/5/2023 9:54:43 AM Current User: Douglas.Mason LastSavedBy: Douglas.Mason

1

2

3

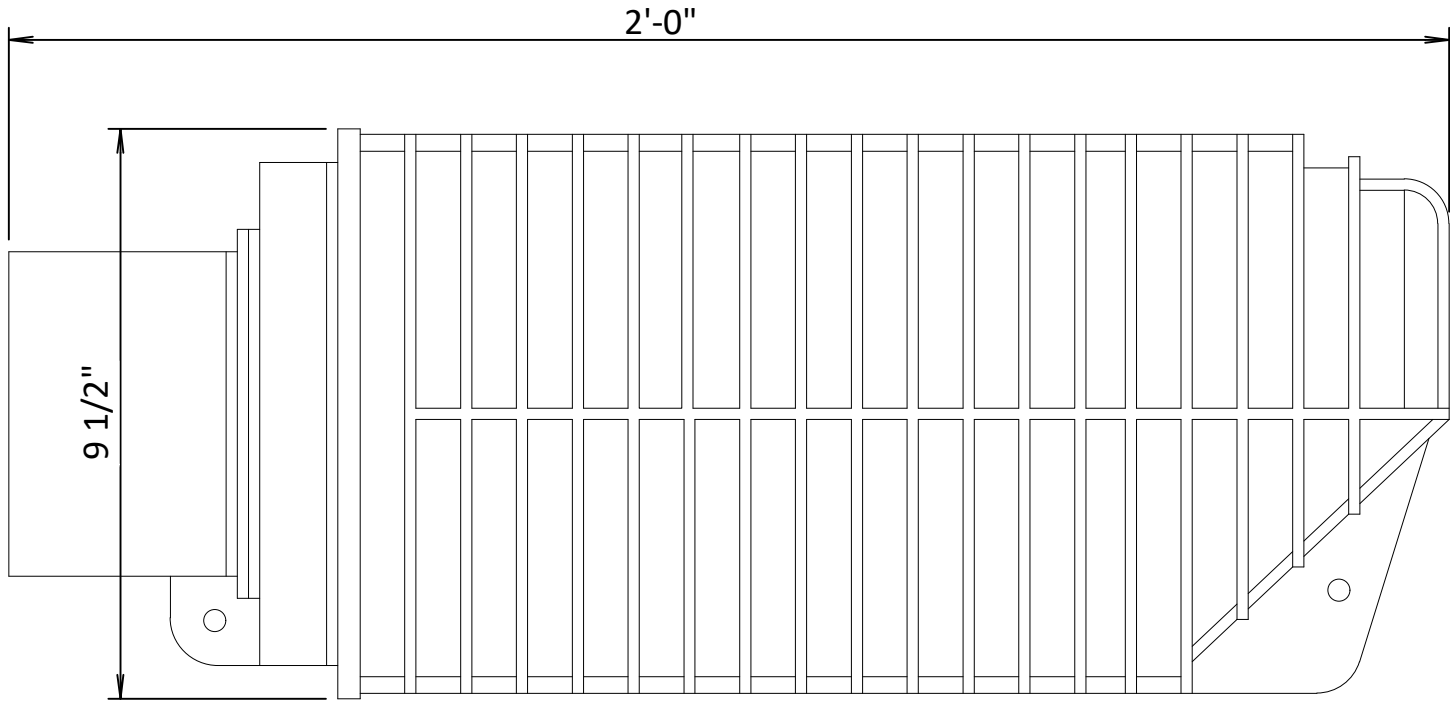
4

NOTES:

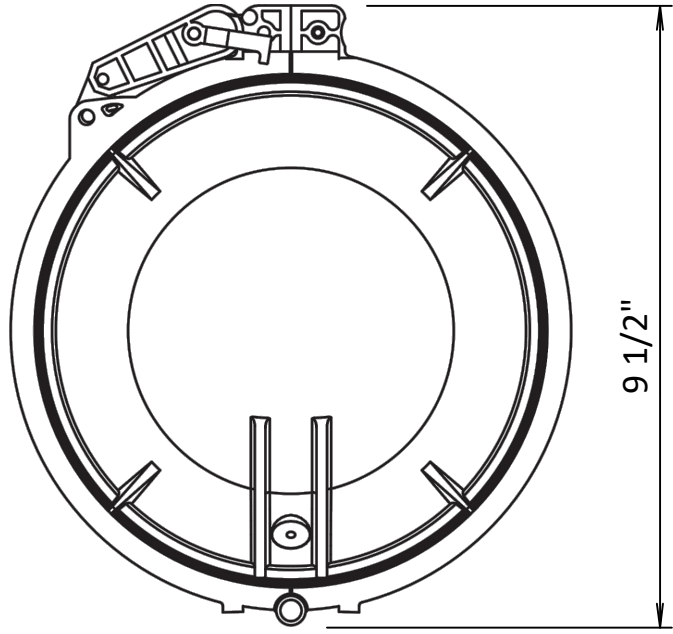
- 1. MAINTAIN 18" SWEEPS ON ALL CONDUITS.
- 2. DTS HUT FIBERS WILL SPLICE TO BLUE TUBE FIBER COLORS BLUE, ORANGE, GREEN AND BROWN.
- 3. SEE REFERENCE DOCUMENTS 2, 3, 4 AND 5 FOR PLACEMENT DETAILS.
- 4. FIBER OPTIC SPLICE CLOSURE ONLY IN SPECIFIC LOCATIONS. SEE PLAN AND PROFILES FOR DETAILS.

REFERENCE DOCUMENTS

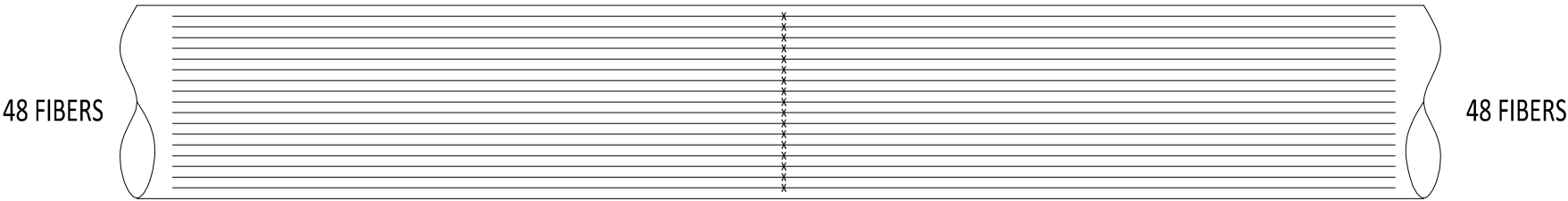
LIST NO.	DOCUMENT NAME	DOCUMENT NO.
1	FIBER OPTIC SPLICE CLOSURE	COMMSCOPE: MODEL NO. FOSC450-B6-6-24-1-B3V
2	TRANSITION VAULT FIBER OPTIC DETAIL	C-850
3	DTS HUT CONNECTION FIBER OPTIC SPLICE AND HANDHOLE	C-851
4	ENCLOSED VAULT w/FIBER OPTICS	C-852
5	OPEN VAULT w/FIBER OPTICS HAND HOLE	C-853



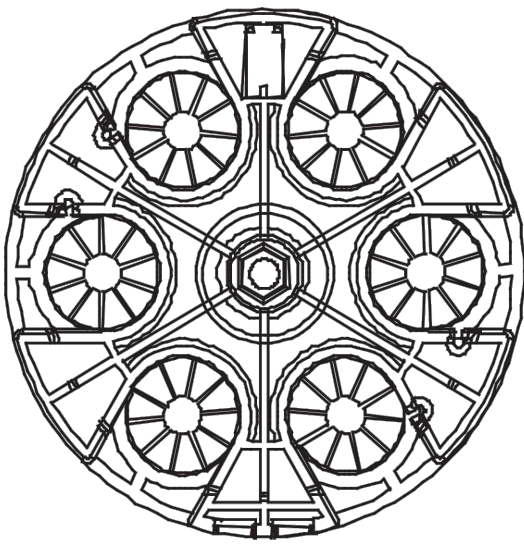
FIBER OPTIC SPLICE CLOSURE
NOT TO SCALE



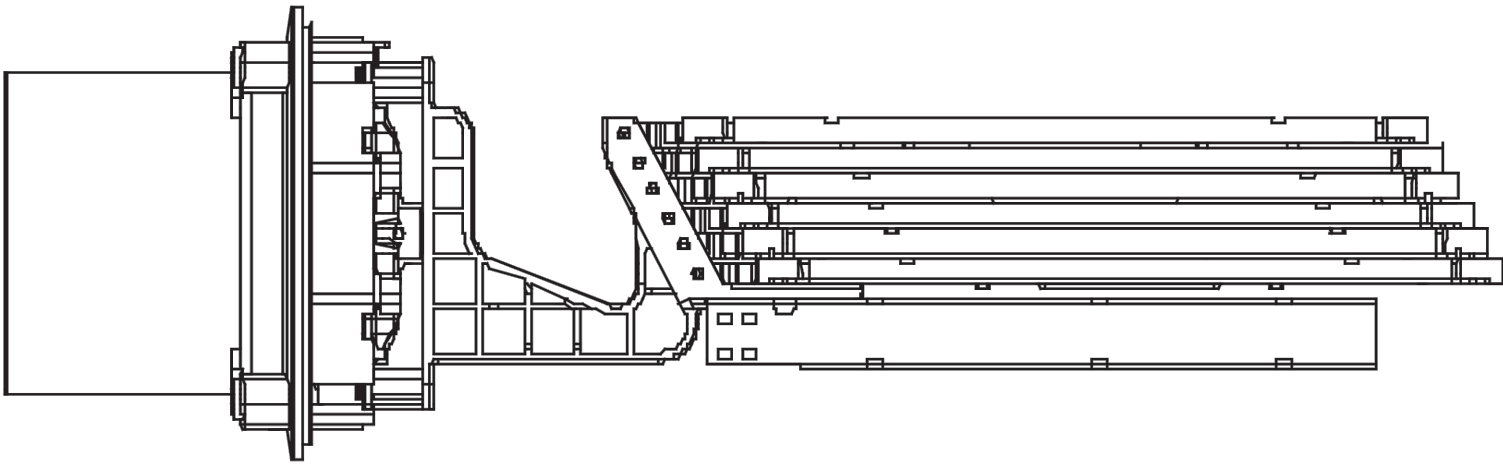
FIBER OPTIC SPLICE CLOSURE
NOT TO SCALE



FIBER OPTIC CABLE SPLICE
DIAGRAM TYPICAL
NOT TO SCALE



FIBER OPTIC SPLICE CLOSURE
GEL-BLOCK PROFILE
NOT TO SCALE



FIBER OPTIC SPLICE CLOSURE
INSIDE DIAGRAM
NOT TO SCALE



IT IS A VIOLATION OF LAW FOR ANY PERSON, UNLESS THEY ARE ACTING UNDER THE DIRECTION OF A LICENSED PROFESSIONAL ENGINEER, ARCHITECT, LANDSCAPE ARCHITECT OR LAND SURVEYOR TO ALTER AN ITEM IN ANY WAY. IF AN ITEM BEARING THE STAMP OF A LICENSED PROFESSIONAL IS ALTERED, THE ALTERING ENGINEER, ARCHITECT, LANDSCAPE ARCHITECT OR LAND SURVEYOR SHALL STAMP THE DOCUMENT AND INCLUDE THE NOTATION "ALTERED BY" FOLLOWED BY THEIR SIGNATURE, THE DATE OF SUCH ALTERATION, AND A SPECIFIC DESCRIPTION OF THE ALTERATION.

0	06/08/2023	ISSUED FOR CONSTRUCTION SUBMISSION	DLM	ASM	
No.	DATE	SUBMITTAL / REVISION DESCRIPTION	DB	APP	

CHAMPLAIN HUDSON POWER EXPRESS

FIBER OPTIC SPLICE DETAILS

DRAWN BY: DLM DESIGNED BY: NM APPROVED BY: MK SCALE REV. NO. 0

KIEWIT PROJECT NO.	21162
CHA PROJECT NO.	066076
DRAWING NO.	C-855
DATE	06/08/2023
SH.NO.	OF

File: R:\INFO\PD\USA STANDARDS\UNDERGROUND SHAREPOINT\PROJECTS\CHPE 400KV DC WORKING FOLDER\DWG\C-856-SPUCE_ENCLOSURE.DWG Saved: 5/12/2023 1:49:40 PM Plotted: 6/5/2023 9:59:20 AM Current User: Douglas.Mason LastSavedBy: Douglas.Mason

CHPE

Champlain Hudson Power Express



IT IS A VIOLATION OF LAW FOR ANY PERSON, UNLESS THEY ARE ACTING UNDER THE DIRECTION OF A LICENSED PROFESSIONAL ENGINEER, ARCHITECT, LANDSCAPE ARCHITECT OR LAND SURVEYOR TO ALTER AN ITEM IN ANY WAY. IF AN ITEM BEARING THE STAMP OF A LICENSED PROFESSIONAL IS ALTERED, THE ALTERING ENGINEER, ARCHITECT, LANDSCAPE ARCHITECT OR LAND SURVEYOR SHALL STAMP THE DOCUMENT AND INCLUDE THE NOTATION "ALTERED BY" FOLLOWED BY THEIR SIGNATURE, THE DATE OF SUCH ALTERATION, AND A SPECIFIC DESCRIPTION OF THE ALTERATION.

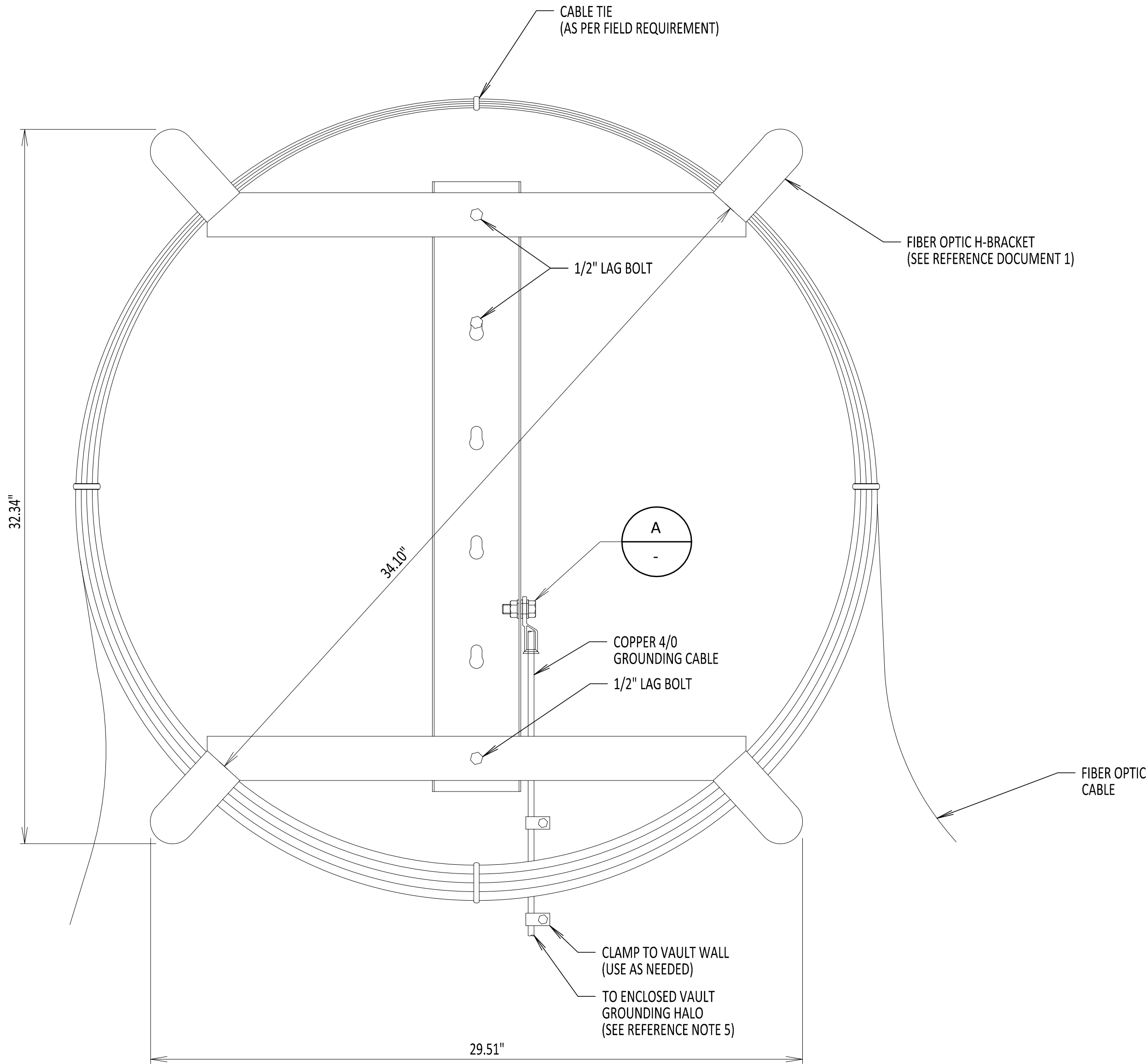
0	06/08/2023	ISSUED FOR CONSTRUCTION SUBMISSION		DLM	ASM
No.	DATE	SUBMITTAL / REVISION DESCRIPTION		DB	APP

CHAMPLAIN HUDSON POWER EXPRESS

FIBER OPTIC H-FRAME BRACKET DETAIL

DRAWN BY: DLMDESIGNED BY: NMAPPROVED BY: MKSCALE

KIEWIT PROJECT NO.	
21162	
CHA PROJECT NO.	
066076	
DRAWING NO.	
C-856	
DATE	06/08/2023
SH.NO.	OF



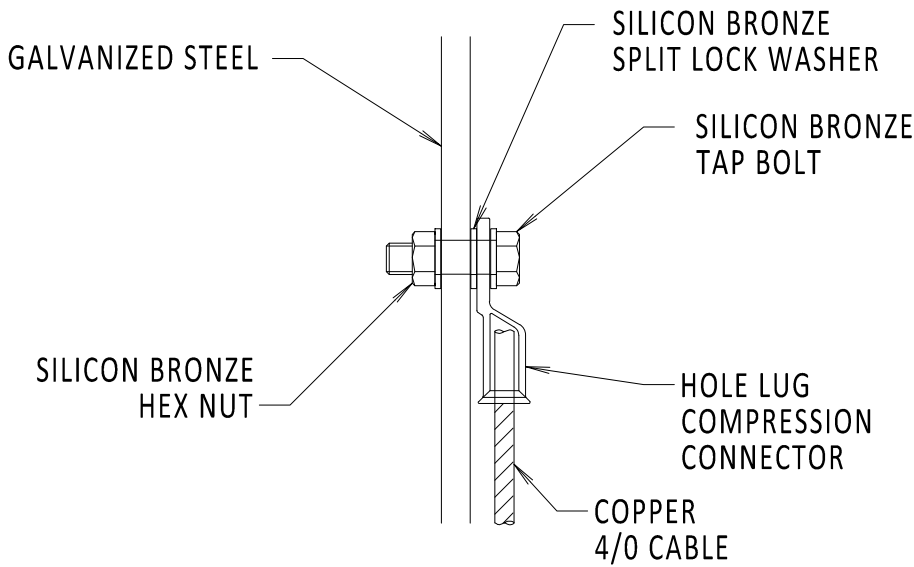
FIBER OPTIC H-FRAME BRACKET
NOT TO SCALE

NOTES:

- DO NOT KINK OR TWIST FIBER OPTIC CABLE.
- IN VAULT PULL FROM DISTANT MANHOLE THEN COIL AND PLACE ON H-FRAME BRACKET.
- H-FRAME IS ONLY USED IN ENCLOSED VAULTS. SEE REFERENCE DOCUMENTS 2 AND 3 FOR PLACEMENT DETAILS.
- H-FRAME BRACKET DEPTH IS 4.50".
- H-FRAME BRACKET TO BE GROUNDED TO THE GROUNDING HALO WITHIN AN ENCLOSED VAULT. SEE DRAWING C-803 FOR ENCLOSED VAULT GROUNDING DETAILS.
- H-FRAME BRACKET IS MADE OF 12GA GALVANIZED STEEL.
- 1/2" LAG BOLT DOES NOT COME WITH H-BRACKET ASSEMBLY AND NEEDS TO BE PROCURED AS NEEDED. BOLT TO BE INSTALLED INTO VAULT WALL BY FIELD PERSONNEL.

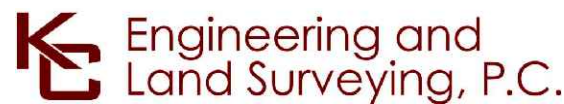
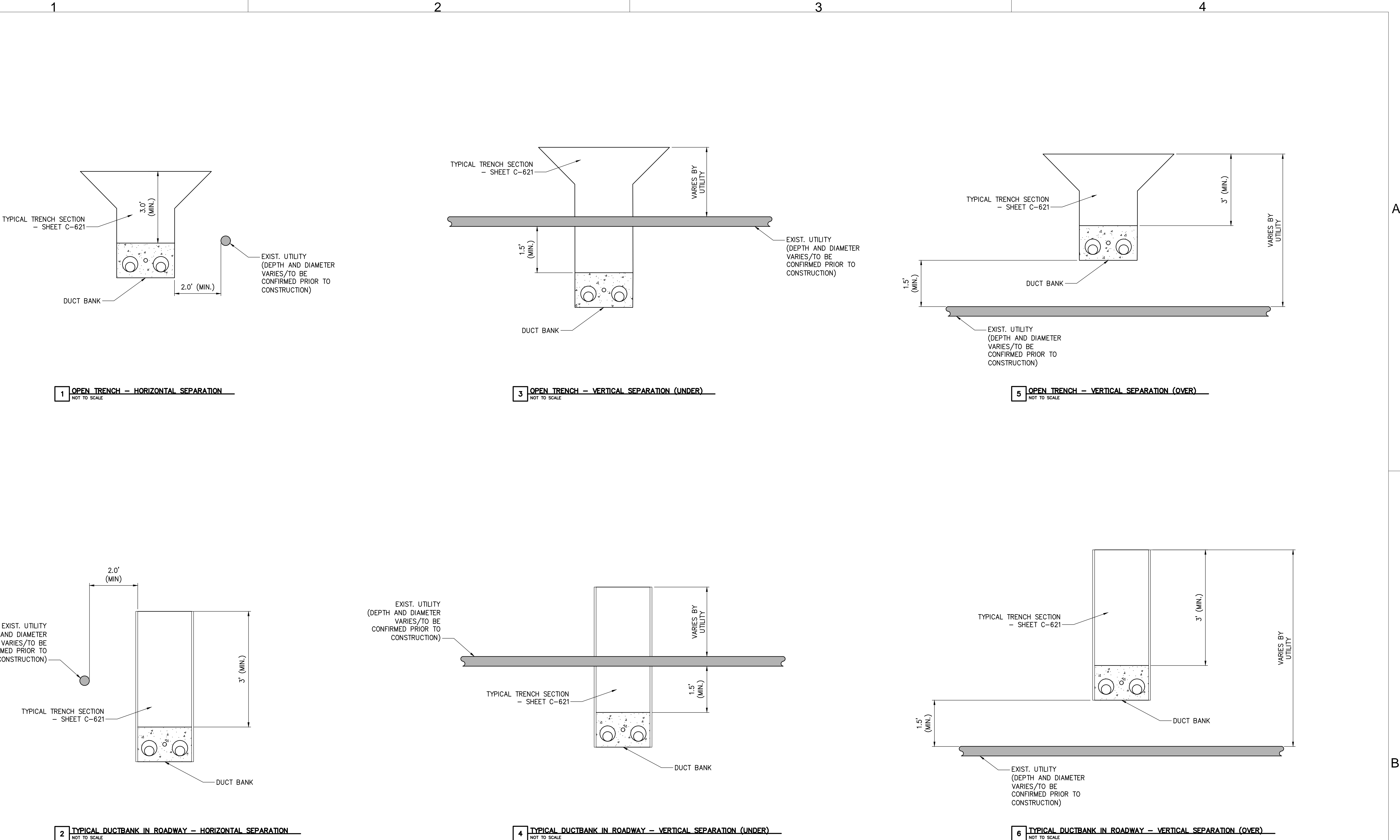
REFERENCE DOCUMENTS

LIST NO.	DOCUMENT NAME	DOCUMENT NO.
1	AMERICAN PRODUCT	H-FRAME POLE BRACKET MODEL NO: AM-3432-FSF-G-B x2
2	TYPICAL VAULT GROUNDING DETAILS	C-803
3	TRANSITION VAULT FIBER OPTIC DETAILS	C-850
4	ENCLOSED VAULT w/FIBER OPTICS	C-852



DETAIL A
NOT TO SCALE

File: P:\2017-4-CHPE-CABLE_INSTALL-KIEWIT\60_CAD\20_ENGINEERING_CAD_FILES\PACKAGE_8\NY_HIGHWAY_DESIGN\01_KCE\SHEET_FILES\21162_8_C901.DWG Saved: 7/24/2023 12:04:19 PM Plotted: 7/25/2023 4:27:43 PM Current User: Melinda Kwok LastSavedBy: mkwok



IT IS A VIOLATION OF LAW FOR ANY PERSON, UNLESS THEY ARE ACTING UNDER THE DIRECTION OF A LICENSED PROFESSIONAL ENGINEER, ARCHITECT, LANDSCAPE ARCHITECT OR LAND SURVEYOR TO ALTER AN ITEM IN ANY WAY. IF AN ITEM BEARING THE STAMP OF A LICENSED PROFESSIONAL IS ALTERED, THE ALTERING ENGINEER, ARCHITECT, LANDSCAPE ARCHITECT OR LAND SURVEYOR SHALL STAMP THE DOCUMENT AND INCLUDE THE NOTATION "ALTERED BY" FOLLOWED BY THEIR SIGNATURE, THE DATE OF SUCH ALTERATION, AND A SPECIFIC DESCRIPTION OF THE ALTERATION.

----	----	----	----	----
----	----	----	----	----
----	----	----	----	----
----	----	----	----	----
----	----	----	----	----
----	----	----	----	----
----	----	----	----	----
0	07/31/2023	ISSUED FOR CONSTRUCTION SUBMISSION		MW
No.	DATE	SUBMITTAL / REVISION DESCRIPTION		DB APP

CHAMPLAIN HUDSON POWER EXPRESS
SEGMENTS 13 TO 15 - PACKAGE 8
TRANSITION VAULT 5 TO ASTORIA CONVERTER STATION
UTILITY TYPICAL SEPARATION DETAILS

DRAWN BY:	DESIGNED BY:	APPROVED BY: MW	SCALE	AS NOTED	DATE	07/31/2023
			REV. NO.		SH.NO.	OF

KIEWIT PROJECT NO.	21162
KC PROJECT NO.	120174
DRAWING NO.	C-901