

## **Notice of Change to Segment 7 EM&CP** **For the Champlain Hudson Power Express Line**

Dear Stakeholder,

On or about July 17, 2024, CHPE LLC and CHPE Properties, Inc. (collectively referred to as “CHPE”) will submit a proposed major change to the approved Environmental Management & Construction Plan (“EM&CP”) for Segment 7 of the Champlain Hudson Power Express (“CHPE”) Project. The Segment 6 and 7 EM&CP was previously approved by the New York State Public Service Commission (“PSC”) on September 14, 2023. Segments 6 and 7 include installation of approximately 19.8 miles of buried overland cable running from the Town of Milton (Saratoga County) through the Town of Rotterdam (Schenectady County), primarily along railroad and highway rights-of-way. By this change, CHPE seeks to install a previously approved trenched length of the Facility via horizontal directional drill (HDD) as a result of coordination between CHPE and the New York State Department of Transportation to reduce potential transportation and traffic impacts, as well as to avoid trenching on a contaminated property where soil remediation activities are ongoing.

The PSC issued a Certificate of Environmental Compatibility and Public Need (“Certificate”) to CHPE on April 18, 2013 to construct and operate the CHPE Project. Pursuant to that Certificate, CHPE is required to circulate notices to certain landowners, utility owners, municipalities and agencies near the proposed Segment’s construction activities when it proposes to make a change to the Facility route approved in an EM&CP. This notice provides a map showing the proposed change and provides links and contact information which stakeholders can use to obtain further information or to submit comments on the proposed change. The EM&CP change must be reviewed and approved by the PSC before construction on the areas subject to this change can begin.

An overview map showing the proposed EM&CP change, which is located near Freeman’s Bridge Road in the Town of Glenville, accompanies this notice. Further details of the planned work locations will be made available on the Project website at: <https://chpexpress.com/overview-of-public-documents/environmental-management-construction-plan/>. Construction activities for this segment are ongoing. Where possible, construction will generally occur during daylight hours, though some limited activities would extend to later hours as needed.

### **Contact Information and Document Repositories**

CHPE has established a toll-free number for questions regarding the Project: 1-800-991-CHPE (2473). Questions or requests for further information can be directed to [publicoutreach@chpexpress.com](mailto:publicoutreach@chpexpress.com) or by mail to Molly Hollister, WSP USA, One Pennsylvania Plaza, New York, New York 10119.

The EM&CP change documents are available on the PSC’s website at <http://documents.dps.ny.gov/public/MatterManagement/CaseMaster.aspx?MatterCaseNo=10-T->



623 Fifth Avenue, 20th Floor  
New York, New York 10022

0139 and on the Project website <https://chpexpress.com/overview-of-public-documents/environmental-management-construction-plan/>

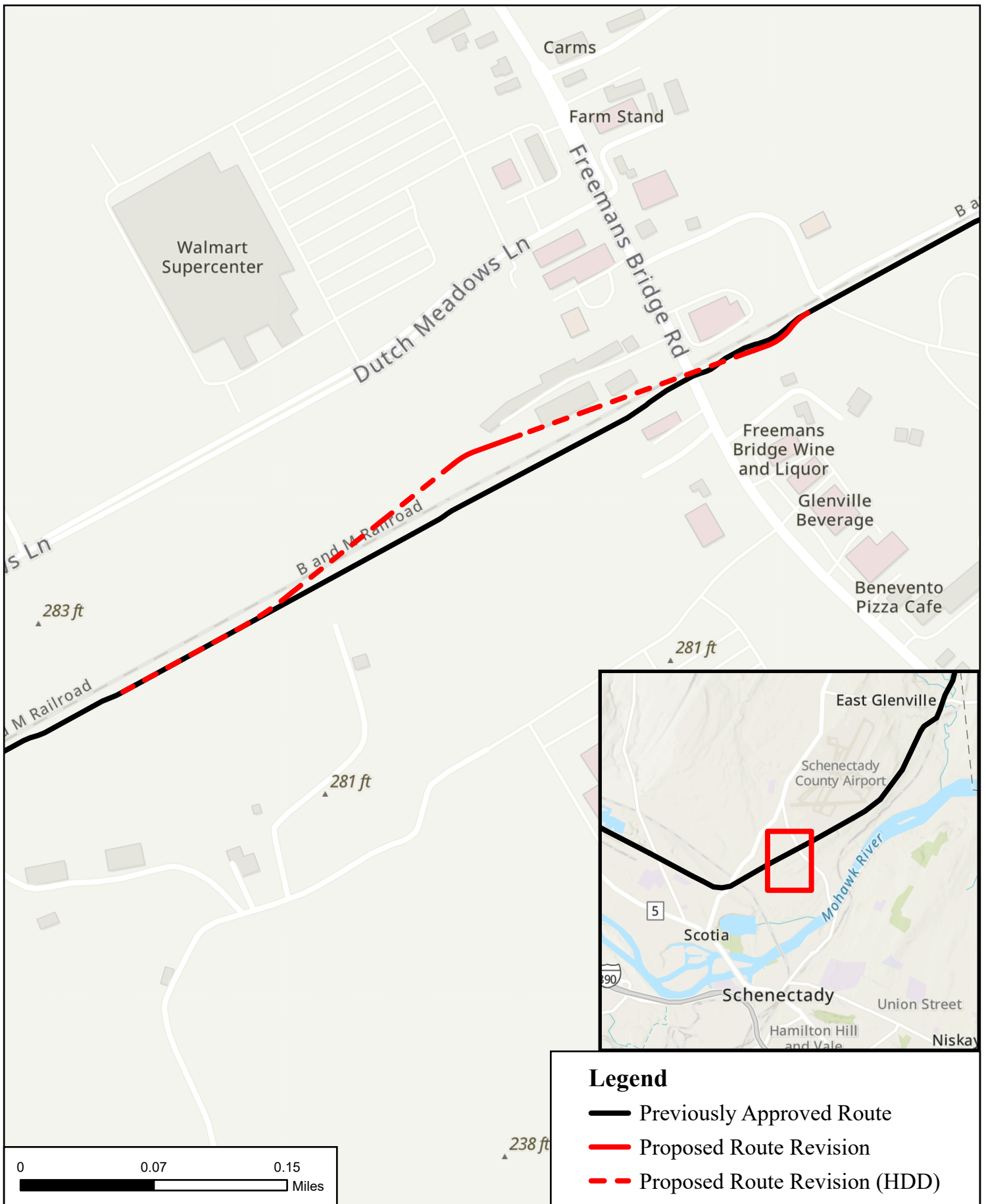
Paper copies of the EM&CP are available for viewing at the following local document repositories: Burnt Hills - Ballston Community Library, 2 Lawmar Lane, Burnt Hills, NY 12027; Ballston Spa Public Library, 21 Milton Avenue, Ballston Spa, NY 12020.

### **Filing Comments**

Any person wishing to be heard by the Commission on any matter related to the proposed EM&CP may file written comments with the Commission Secretary by email at [secretary@dps.ny.gov](mailto:secretary@dps.ny.gov) or by mail to Michelle Phillips, Secretary, NYS Public Service Commission, 3 Empire State Plaza, Albany, NY, 12223, within 21 days of this notice. All comments should reference Case Number 10-T-0139.

Yours truly,

Josh Bagnato  
Vice President, Development



## Champlain Hudson Power Express Change Notice Exhibit

Service Layer Credits: Esri, NASA, NGA, USGS, FEMA, Esri Community Maps Contributors, © OpenStreetMap, Microsoft, Esri, TomTom, Garmin, SafeGraph, GeoTechnologies, Inc, METI/NASA, USGS, EPA, NPS, US Census Bureau, USDA, USFWS, Esri, TomTom, Garmin, SafeGraph, GeoTechnologies, Inc, METI/NASA, USGS, EPA, NPS, USDA, USFWS

## **NOTICE OF CHANGE TO ENVIRONMENTAL MANAGEMENT AND CONSTRUCTION PLAN FOR CHAMPLAIN HUDSON POWER EXPRESS**

Please take notice that on or about July 17, 2024 CHPE LLC and CHPE Properties, Inc. (collectively referred to as “CHPE”) will submit a proposed major change to the approved Environmental Management & Construction Plan (“EM&CP”) for Segment 7 of the Champlain Hudson Power Express (“CHPE”) Project. The Segment 6 and 7 EM&CP was previously approved by the New York State Public Service Commission (“PSC”) on September 14, 2023. Segments 6 and 7 include installation of approximately 19.8 miles of buried overland cable running from the Town of Milton (Saratoga County) through the Town of Rotterdam (Schenectady County), primarily along railroad and highway rights-of-way. By this change, CHPE seeks to install a previously approved trenched length of the Facility via horizontal directional drill (HDD) as a result of coordination between CHPE and the New York State Department of Transportation to reduce potential transportation and traffic impacts, as well as to avoid trenching on a contaminated property where soil remediation activities are ongoing.

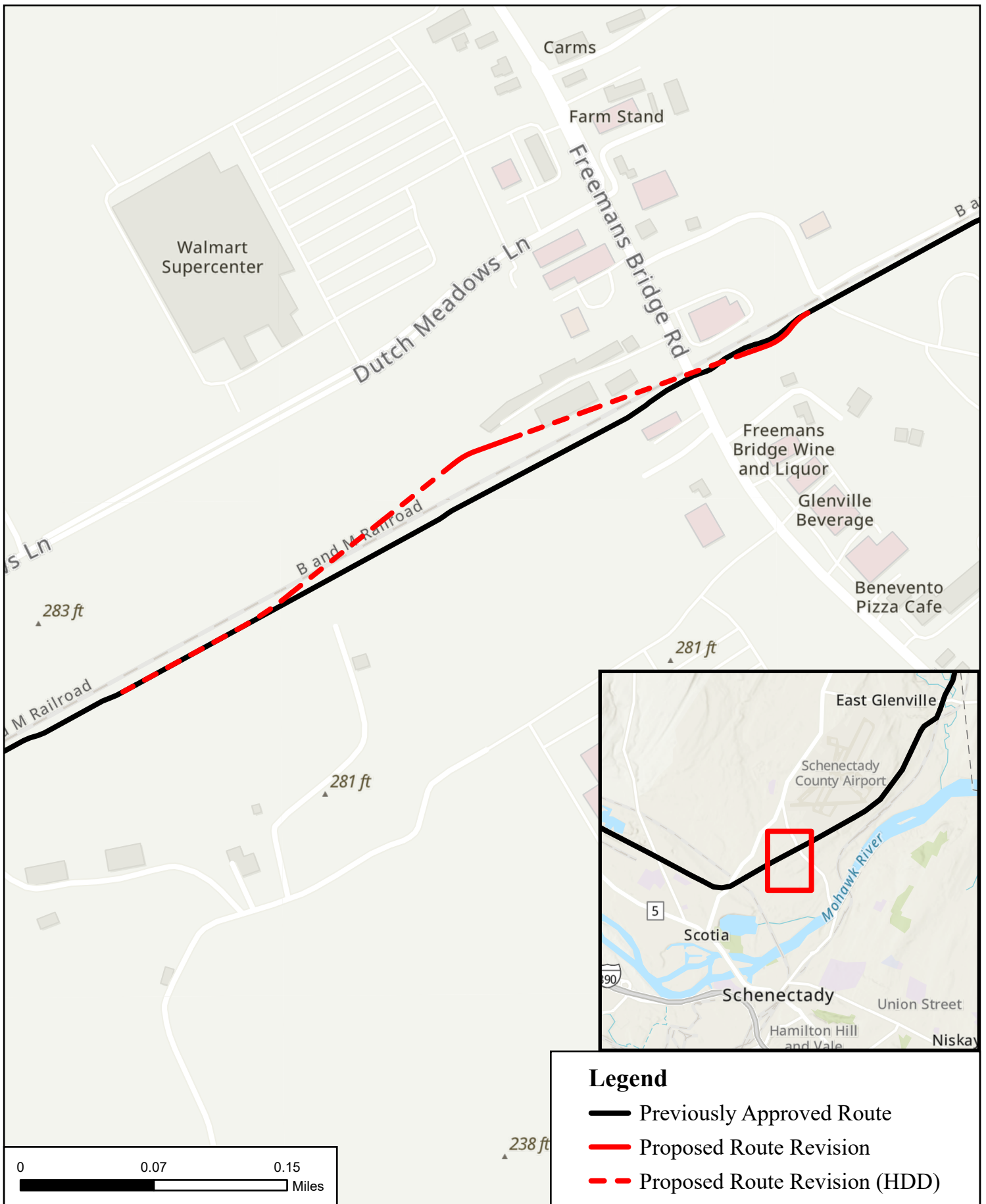
The PSC issued a Certificate of Environmental Compatibility and Public Need (“Certificate”) to CHPE on April 18, 2013 to construct and operate the CHPE Project. Pursuant to that Certificate, CHPE is required to circulate notices to certain landowners, utility owners, municipalities and agencies near the proposed Segment’s construction activities when it proposes to make a change to the Facility route approved in an EM&CP. This notice provides a map showing the proposed change and provides links and contact information which stakeholders can use to obtain further information or to submit comments on the proposed change. The EM&CP change must be reviewed and approved by the PSC before construction on the areas subject to this change can begin.

An overview map showing the proposed EM&CP change, which is located near Freeman’s Bridge Road in the Town of Glenville, accompanies this notice. Further details of the planned work locations will be made available on the Project website at: <https://chpexpress.com/overview-of-public-documents/environmental-management-construction-plan/>. Construction activities for this segment are ongoing. Where possible, construction will generally occur during daylight hours, though some limited activities would extend to later hours as needed.

The full Commission docket for the Project can be accessed via the Commission’s website at: <http://documents.dps.ny.gov/public/MatterManagement/CaseMaster.aspx?MatterCaseNo=10-T-0139> and electronic copies of EM&CP change documents are available on the Project website at <https://chpexpress.com/overview-of-public-documents/environmental-management-construction-plan/>. Paper copies of the EM&CP are available for viewing at the following local document repositories: Burnt Hills Library, 2 Lawmar Lane, Burt Hills, NY 12027; Ballston Spa Library, 21 Milton Ave, Ballston Spa, NY 12020.

Comments related to this proposed EM&CP should be submitted to the Commission Secretary by email at [secretary@dps.ny.gov](mailto:secretary@dps.ny.gov) or by mail to Michelle Phillips, Secretary, NYS Public Service Commission, 3 Empire State Plaza, Albany, NY, 12223, within 21 days of this notice. All comments should reference Case Number 10-T-0139.

CHPE has established a toll-free number for questions regarding the Project: 1-800-991-CHPE (2473). Questions or requests for further information can be directed to: [publicoutreach@chpexpress.com](mailto:publicoutreach@chpexpress.com) or by mail to Molly Hollister, WSP USA, One Pennsylvania Plaza, New York, New York 10119.



## Champlain Hudson Power Express Change Notice Exhibit

Service Layer Credits: Esri, NASA, NGA, USGS, FEMA, Esri Community Maps Contributors, © OpenStreetMap, Microsoft, Esri, TomTom, Garmin, SafeGraph, GeoTechnologies, Inc, METI/NASA, USGS, EPA, NPS, US Census Bureau, USDA, USFWS, Esri, TomTom, Garmin, SafeGraph, GeoTechnologies, Inc, METI/NASA, USGS, EPA, NPS, USDA, USFWS