



Appendix I: Agency Correspondence

From: Palmer, Patrick M (HEALTH) <patrick.palmer@health.ny.gov>
Sent: Wednesday, April 12, 2023 10:12 AM
To: Conese, Katherine
Subject: [EXTERNAL] Hudson River PWSs

This is an **EXTERNAL** email. Do not click links or open attachments unless you validate the sender and know the content is safe.
ALWAYS hover over the link to preview the actual URL/site and confirm its legitimacy.

Hi Katie - here is the contact info we have listed for PWSs that draw from the Hudson on the submarine route of the cable. It's best to reach out directly to them for the most accurate info on their infrastructure.

-Pat

Water_System_Name	Water_SystemID	Contact_Name	Contact_Phone_Number	Emergency_Phone_Number	Email
POUGHKEEPSIE CITY/TOWN TREATMENT PLANT	NY1302774	ALSTADT, RANDY	845-451-4173	845-625-3448	ralstadt@poughkeepsie.org
RHINEBECK VILLAGE WATER	NY1302776	ALIX, BRYAN	845-876-7331	845-679-2210	water@rhinebeck.org
HYDE PARK REGIONAL	NY1302796	PETIT, ALAIN L	845-229-2524		APETIT@hydepark.org
HIGHLAND WATER DISTRICT	NY5503368	SCHAAF, MARK	845-691-2400	845-691-7944	mschaaf@highlandwater.org
PORT EWEN WATER DISTRICT	NY5503382	BUTLER, NICHOLAS	845-331-5900	845-331-0676	nbutler@portewen.org
CASTLE POINT MEDICAL CENTER	NY1319255	CLIFFE, JOHN	845-831-2000	914-737-4400	john.cliffe@castlepoint.org
NEW YORK CITY SYSTEM	NY7003493	Darin Dekoskie	845-657-5094	718-662-6177	ddek@nycwater.org
<i>C = Community Water System</i>					
<i>NP = Non-Public Water System</i>					
<i>Gray text = Inactive Intake</i>					

Patrick M. Palmer, MPH
Chief, NYC Watershed Section
Bureau of Water Supply Protection
New York State Department of Health
Empire State Plaza, Corning Tower, Room 1198, Albany, NY 12237
Office: 518.402.7650 | Cell: 518.646.2341
patrick.palmer@health.ny.gov

From: Conese, Katherine <KConese@trccompanies.com>
Sent: Monday, April 10, 2023 3:23 PM
To: Palmer, Patrick M (HEALTH) <patrick.palmer@health.ny.gov>
Subject: RE: [EXTERNAL] RE: Lake Champlain Intakes

ATTENTION: This email came from an external source. Do not open attachments or click on links from unknown senders or unexpected emails.

Hi Pat,

Thank you again for your help in determining the location of PWS intakes within Lake Champlain. I am now working on the Hudson River Mattress Pre-Lay EM&CP and need to determine the latitude/longitude of intakes within the Hudson River and contact information for these entities. Would you be able to provide this information or point me in the right direction as to who could?

Thank you,
Katie

Katie Conese
Environmental Scientist



404 Wyman Street, Suite 375, Waltham MA 02451
T 781-419-7709 E KConese@TRCcompanies.com
[LinkedIn](#) | [Twitter](#) | [Blog](#) | TRCcompanies.com

From: Palmer, Patrick M (HEALTH) <patrick.palmer@health.ny.gov>
Sent: Friday, February 3, 2023 8:38 AM
To: Conese, Katherine <KConese@trccompanies.com>
Subject: RE: [EXTERNAL] RE: Lake Champlain Intakes

This is an **EXTERNAL** email. Do not click links or open attachments unless you validate the sender and know the content is safe.
ALWAYS hover over the link to preview the actual URL/site and confirm its legitimacy.



United States Department of the Interior

FISH AND WILDLIFE SERVICE
New York Ecological Services Field Office
3817 Luker Road
Cortland, NY 13045-9385
Phone: (607) 753-9334 Fax: (607) 753-9699
Email Address: fw5es_nyfo@fws.gov



In Reply Refer To:

May 12, 2023

Project Code: 2023-0081668

Project Name: Champlain Hudson Power Express Hudson River Marine Segment

Subject: List of threatened and endangered species that may occur in your proposed project location or may be affected by your proposed project

To Whom It May Concern:

The enclosed species list identifies threatened, endangered, proposed and candidate species, as well as proposed and final designated critical habitat, that may occur within the boundary of your proposed project and/or may be affected by your proposed project. The species list fulfills the requirements of the U.S. Fish and Wildlife Service (Service) under section 7(c) of the Endangered Species Act (Act) of 1973, as amended (16 U.S.C. 1531 *et seq.*).

New information based on updated surveys, changes in the abundance and distribution of species, changed habitat conditions, or other factors could change this list. Please feel free to contact us if you need more current information or assistance regarding the potential impacts to federally proposed, listed, and candidate species and federally designated and proposed critical habitat. Please note that under 50 CFR 402.12(e) of the regulations implementing section 7 of the Act, the accuracy of this species list should be verified after 90 days. This verification can be completed formally or informally as desired. The Service recommends that verification be completed by visiting the ECOS-IPaC website at regular intervals during project planning and implementation for updates to species lists and information. An updated list may be requested through the ECOS-IPaC system by completing the same process used to receive the enclosed list.

The purpose of the Act is to provide a means whereby threatened and endangered species and the ecosystems upon which they depend may be conserved. Under sections 7(a)(1) and 7(a)(2) of the Act and its implementing regulations (50 CFR 402 *et seq.*), Federal agencies are required to utilize their authorities to carry out programs for the conservation of threatened and endangered species and to determine whether projects may affect threatened and endangered species and/or designated critical habitat.

A Biological Assessment is required for construction projects (or other undertakings having similar physical impacts) that are major Federal actions significantly affecting the quality of the human environment as defined in the National Environmental Policy Act (42 U.S.C. 4332(2)).

(c)). For projects other than major construction activities, the Service suggests that a biological evaluation similar to a Biological Assessment be prepared to determine whether the project may affect listed or proposed species and/or designated or proposed critical habitat. Recommended contents of a Biological Assessment are described at 50 CFR 402.12.

If a Federal agency determines, based on the Biological Assessment or biological evaluation, that listed species and/or designated critical habitat may be affected by the proposed project, the agency is required to consult with the Service pursuant to 50 CFR 402. In addition, the Service recommends that candidate species, proposed species and proposed critical habitat be addressed within the consultation. More information on the regulations and procedures for section 7 consultation, including the role of permit or license applicants, can be found in the "Endangered Species Consultation Handbook" at:

<http://www.fws.gov/endangered/esa-library/pdf/TOC-GLOS.PDF>

Migratory Birds: In addition to responsibilities to protect threatened and endangered species under the Endangered Species Act (ESA), there are additional responsibilities under the Migratory Bird Treaty Act (MBTA) and the Bald and Golden Eagle Protection Act (BGEPA) to protect native birds from project-related impacts. Any activity, intentional or unintentional, resulting in take of migratory birds, including eagles, is prohibited unless otherwise permitted by the U.S. Fish and Wildlife Service (50 C.F.R. Sec. 10.12 and 16 U.S.C. Sec. 668(a)). For more information regarding these Acts see <https://www.fws.gov/birds/policies-and-regulations.php>.

The MBTA has no provision for allowing take of migratory birds that may be unintentionally killed or injured by otherwise lawful activities. It is the responsibility of the project proponent to comply with these Acts by identifying potential impacts to migratory birds and eagles within applicable NEPA documents (when there is a federal nexus) or a Bird/Eagle Conservation Plan (when there is no federal nexus). Proponents should implement conservation measures to avoid or minimize the production of project-related stressors or minimize the exposure of birds and their resources to the project-related stressors. For more information on avian stressors and recommended conservation measures see <https://www.fws.gov/birds/bird-enthusiasts/threats-to-birds.php>.

In addition to MBTA and BGEPA, Executive Order 13186: *Responsibilities of Federal Agencies to Protect Migratory Birds*, obligates all Federal agencies that engage in or authorize activities that might affect migratory birds, to minimize those effects and encourage conservation measures that will improve bird populations. Executive Order 13186 provides for the protection of both migratory birds and migratory bird habitat. For information regarding the implementation of Executive Order 13186, please visit <https://www.fws.gov/birds/policies-and-regulations/executive-orders/e0-13186.php>.

We appreciate your concern for threatened and endangered species. The Service encourages Federal agencies to include conservation of threatened and endangered species into their project planning to further the purposes of the Act. **Please include the Consultation Code in the header of this letter with any request for consultation or correspondence about your project that you submit to our office.**

Note: IPaC has provided all available attachments because this project is in multiple field office jurisdictions.

Attachment(s):

- Official Species List
 - USFWS National Wildlife Refuges and Fish Hatcheries
 - Migratory Birds
 - Wetlands
-

OFFICIAL SPECIES LIST

This list is provided pursuant to Section 7 of the Endangered Species Act, and fulfills the requirement for Federal agencies to "request of the Secretary of the Interior information whether any species which is listed or proposed to be listed may be present in the area of a proposed action".

This species list is provided by:

New York Ecological Services Field Office

3817 Luker Road
Cortland, NY 13045-9385
(607) 753-9334

This project's location is within the jurisdiction of multiple offices. However, only one species list document will be provided for all offices. The species and critical habitats in this document reflect the aggregation of those that fall in each of the affiliated office's jurisdiction. Other offices affiliated with the project:

Long Island Ecological Services Field Office

340 Smith Road
Shirley, NY 11967-2258
(631) 286-0485

PROJECT SUMMARY

Project Code: 2023-0081668
Project Name: Champlain Hudson Power Express Hudson River Marine Segment
Project Type: Transmission Line - New Constr - Below Ground
Project Description: List of threatened and endangered species that may occur in the proposed project location or may be affected by the proposed project

Project Location:

The approximate location of the project can be viewed in Google Maps: <https://www.google.com/maps/@41.91623445,-73.95909587261906,14z>



Counties: New York

ENDANGERED SPECIES ACT SPECIES

There is a total of 4 threatened, endangered, or candidate species on this species list.

Species on this list should be considered in an effects analysis for your project and could include species that exist in another geographic area. For example, certain fish may appear on the species list because a project could affect downstream species.

IPaC does not display listed species or critical habitats under the sole jurisdiction of NOAA Fisheries¹, as USFWS does not have the authority to speak on behalf of NOAA and the Department of Commerce.

See the "Critical habitats" section below for those critical habitats that lie wholly or partially within your project area under this office's jurisdiction. Please contact the designated FWS office if you have questions.

-
1. [NOAA Fisheries](#), also known as the National Marine Fisheries Service (NMFS), is an office of the National Oceanic and Atmospheric Administration within the Department of Commerce.

MAMMALS

NAME	STATUS
Indiana Bat <i>Myotis sodalis</i> There is final critical habitat for this species. Your location does not overlap the critical habitat. Species profile: https://ecos.fws.gov/ecp/species/5949	Endangered
Northern Long-eared Bat <i>Myotis septentrionalis</i> No critical habitat has been designated for this species. Species profile: https://ecos.fws.gov/ecp/species/9045	Endangered

INSECTS

NAME	STATUS
Monarch Butterfly <i>Danaus plexippus</i> No critical habitat has been designated for this species. Species profile: https://ecos.fws.gov/ecp/species/9743	Candidate

FLOWERING PLANTS

NAME	STATUS
Small Whorled Pogonia <i>Isotria medeoloides</i> Population: No critical habitat has been designated for this species. Species profile: https://ecos.fws.gov/ecp/species/1890	Threatened

CRITICAL HABITATS

THERE ARE NO CRITICAL HABITATS WITHIN YOUR PROJECT AREA UNDER THIS OFFICE'S JURISDICTION.

YOU ARE STILL REQUIRED TO DETERMINE IF YOUR PROJECT(S) MAY HAVE EFFECTS ON ALL ABOVE LISTED SPECIES.

USFWS NATIONAL WILDLIFE REFUGE LANDS AND FISH HATCHERIES

Any activity proposed on lands managed by the [National Wildlife Refuge](#) system must undergo a 'Compatibility Determination' conducted by the Refuge. Please contact the individual Refuges to discuss any questions or concerns.

THERE ARE NO REFUGE LANDS OR FISH HATCHERIES WITHIN YOUR PROJECT AREA.

MIGRATORY BIRDS

Certain birds are protected under the Migratory Bird Treaty Act¹ and the Bald and Golden Eagle Protection Act².

Any person or organization who plans or conducts activities that may result in impacts to migratory birds, eagles, and their habitats should follow appropriate regulations and consider implementing appropriate conservation measures, as described [below](#).

-
1. The [Migratory Birds Treaty Act](#) of 1918.
 2. The [Bald and Golden Eagle Protection Act](#) of 1940.
 3. 50 C.F.R. Sec. 10.12 and 16 U.S.C. Sec. 668(a)

The birds listed below are birds of particular concern either because they occur on the [USFWS Birds of Conservation Concern \(BCC\)](#) list or warrant special attention in your project location. To learn more about the levels of concern for birds on your list and how this list is generated, see the FAQ [below](#). This is not a list of every bird you may find in this location, nor a guarantee that every bird on this list will be found in your project area. To see exact locations of where birders and the general public have sighted birds in and around your project area, visit the [E-bird data mapping tool](#) (Tip: enter your location, desired date range and a species on your list). For projects that occur off the Atlantic Coast, additional maps and models detailing the relative occurrence and abundance of bird species on your list are available. Links to additional information about Atlantic Coast birds, and other important information about your migratory bird list, including how to properly interpret and use your migratory bird report, can be found [below](#).

For guidance on when to schedule activities or implement avoidance and minimization measures to reduce impacts to migratory birds on your list, click on the PROBABILITY OF PRESENCE SUMMARY at the top of your list to see when these birds are most likely to be present and breeding in your project area.

NAME	BREEDING SEASON
American Golden-plover <i>Pluvialis dominica</i> This is a Bird of Conservation Concern (BCC) throughout its range in the continental USA and Alaska.	Breeds elsewhere
American Oystercatcher <i>Haematopus palliatus</i> This is a Bird of Conservation Concern (BCC) throughout its range in the continental USA and Alaska. https://ecos.fws.gov/ecp/species/8935	Breeds Apr 15 to Aug 31

NAME	BREEDING SEASON
Bald Eagle <i>Haliaeetus leucocephalus</i> This is not a Bird of Conservation Concern (BCC) in this area, but warrants attention because of the Eagle Act or for potential susceptibilities in offshore areas from certain types of development or activities.	Breeds Sep 1 to Aug 31
Belted Kingfisher <i>Megasceryle alcyon</i> This is a Bird of Conservation Concern (BCC) only in particular Bird Conservation Regions (BCRs) in the continental USA	Breeds Mar 15 to Jul 25
Black Skimmer <i>Rynchops niger</i> This is a Bird of Conservation Concern (BCC) throughout its range in the continental USA and Alaska. https://ecos.fws.gov/ecp/species/5234	Breeds May 20 to Sep 15
Black-billed Cuckoo <i>Coccyzus erythrophthalmus</i> This is a Bird of Conservation Concern (BCC) throughout its range in the continental USA and Alaska. https://ecos.fws.gov/ecp/species/9399	Breeds May 15 to Oct 10
Black-capped Chickadee <i>Poecile atricapillus praticus</i> This is a Bird of Conservation Concern (BCC) only in particular Bird Conservation Regions (BCRs) in the continental USA	Breeds Apr 10 to Jul 31
Blue-winged Warbler <i>Vermivora pinus</i> This is a Bird of Conservation Concern (BCC) only in particular Bird Conservation Regions (BCRs) in the continental USA	Breeds May 1 to Jun 30
Bobolink <i>Dolichonyx oryzivorus</i> This is a Bird of Conservation Concern (BCC) throughout its range in the continental USA and Alaska.	Breeds May 20 to Jul 31
Canada Warbler <i>Cardellina canadensis</i> This is a Bird of Conservation Concern (BCC) throughout its range in the continental USA and Alaska.	Breeds May 20 to Aug 10
Cerulean Warbler <i>Dendroica cerulea</i> This is a Bird of Conservation Concern (BCC) throughout its range in the continental USA and Alaska. https://ecos.fws.gov/ecp/species/2974	Breeds Apr 20 to Jul 20
Chimney Swift <i>Chaetura pelagica</i> This is a Bird of Conservation Concern (BCC) throughout its range in the continental USA and Alaska.	Breeds Mar 15 to Aug 25
Eastern Meadowlark <i>Sturnella magna</i> This is a Bird of Conservation Concern (BCC) only in particular Bird Conservation Regions (BCRs) in the continental USA	Breeds Apr 25 to Aug 31
Eastern Whip-poor-will <i>Antrostomus vociferus</i> This is a Bird of Conservation Concern (BCC) throughout its range in the continental USA and Alaska.	Breeds May 1 to Aug 20

NAME	BREEDING SEASON
Evening Grosbeak <i>Coccothraustes vespertinus</i> This is a Bird of Conservation Concern (BCC) throughout its range in the continental USA and Alaska.	Breeds May 15 to Aug 10
Golden Eagle <i>Aquila chrysaetos</i> This is not a Bird of Conservation Concern (BCC) in this area, but warrants attention because of the Eagle Act or for potential susceptibilities in offshore areas from certain types of development or activities. https://ecos.fws.gov/ecp/species/1680	Breeds Jan 1 to Aug 31
Golden-winged Warbler <i>Vermivora chrysoptera</i> This is a Bird of Conservation Concern (BCC) throughout its range in the continental USA and Alaska. https://ecos.fws.gov/ecp/species/8745	Breeds May 1 to Jul 20
Hudsonian Godwit <i>Limosa haemastica</i> This is a Bird of Conservation Concern (BCC) throughout its range in the continental USA and Alaska.	Breeds elsewhere
Kentucky Warbler <i>Oporornis formosus</i> This is a Bird of Conservation Concern (BCC) throughout its range in the continental USA and Alaska.	Breeds Apr 20 to Aug 20
Lesser Yellowlegs <i>Tringa flavipes</i> This is a Bird of Conservation Concern (BCC) throughout its range in the continental USA and Alaska. https://ecos.fws.gov/ecp/species/9679	Breeds elsewhere
Long-eared Owl <i>asio otus</i> This is a Bird of Conservation Concern (BCC) throughout its range in the continental USA and Alaska. https://ecos.fws.gov/ecp/species/3631	Breeds Mar 1 to Jul 15
Northern Saw-whet Owl <i>Aegolius acadicus acadicus</i> This is a Bird of Conservation Concern (BCC) only in particular Bird Conservation Regions (BCRs) in the continental USA	Breeds Mar 1 to Jul 31
Prairie Warbler <i>Dendroica discolor</i> This is a Bird of Conservation Concern (BCC) throughout its range in the continental USA and Alaska.	Breeds May 1 to Jul 31
Prothonotary Warbler <i>Protonotaria citrea</i> This is a Bird of Conservation Concern (BCC) throughout its range in the continental USA and Alaska.	Breeds Apr 1 to Jul 31
Purple Sandpiper <i>Calidris maritima</i> This is a Bird of Conservation Concern (BCC) throughout its range in the continental USA and Alaska.	Breeds elsewhere
Red-headed Woodpecker <i>Melanerpes erythrocephalus</i> This is a Bird of Conservation Concern (BCC) throughout its range in the continental USA and Alaska.	Breeds May 10 to Sep 10

NAME	BREEDING SEASON
Ruddy Turnstone <i>Arenaria interpres morinella</i> This is a Bird of Conservation Concern (BCC) only in particular Bird Conservation Regions (BCRs) in the continental USA	Breeds elsewhere
Rusty Blackbird <i>Euphagus carolinus</i> This is a Bird of Conservation Concern (BCC) only in particular Bird Conservation Regions (BCRs) in the continental USA	Breeds elsewhere
Short-billed Dowitcher <i>Limnodromus griseus</i> This is a Bird of Conservation Concern (BCC) throughout its range in the continental USA and Alaska. https://ecos.fws.gov/ecp/species/9480	Breeds elsewhere
Willet <i>Tringa semipalmata</i> This is a Bird of Conservation Concern (BCC) throughout its range in the continental USA and Alaska.	Breeds Apr 20 to Aug 5
Wood Thrush <i>Hylocichla mustelina</i> This is a Bird of Conservation Concern (BCC) throughout its range in the continental USA and Alaska.	Breeds May 10 to Aug 31

PROBABILITY OF PRESENCE SUMMARY

The graphs below provide our best understanding of when birds of concern are most likely to be present in your project area. This information can be used to tailor and schedule your project activities to avoid or minimize impacts to birds. Please make sure you read and understand the FAQ "Proper Interpretation and Use of Your Migratory Bird Report" before using or attempting to interpret this report.

Probability of Presence (■)

Each green bar represents the bird's relative probability of presence in the 10km grid cell(s) your project overlaps during a particular week of the year. (A year is represented as 12 4-week months.) A taller bar indicates a higher probability of species presence. The survey effort (see below) can be used to establish a level of confidence in the presence score. One can have higher confidence in the presence score if the corresponding survey effort is also high.

How is the probability of presence score calculated? The calculation is done in three steps:

1. The probability of presence for each week is calculated as the number of survey events in the week where the species was detected divided by the total number of survey events for that week. For example, if in week 12 there were 20 survey events and the Spotted Towhee was found in 5 of them, the probability of presence of the Spotted Towhee in week 12 is 0.25.
2. To properly present the pattern of presence across the year, the relative probability of presence is calculated. This is the probability of presence divided by the maximum probability of presence across all weeks. For example, imagine the probability of presence in week 20 for the Spotted Towhee is 0.05, and that the probability of presence at week 12

(0.25) is the maximum of any week of the year. The relative probability of presence on week 12 is $0.25/0.25 = 1$; at week 20 it is $0.05/0.25 = 0.2$.

3. The relative probability of presence calculated in the previous step undergoes a statistical conversion so that all possible values fall between 0 and 10, inclusive. This is the probability of presence score.

Breeding Season (■)

Yellow bars denote a very liberal estimate of the time-frame inside which the bird breeds across its entire range. If there are no yellow bars shown for a bird, it does not breed in your project area.

Survey Effort (|)

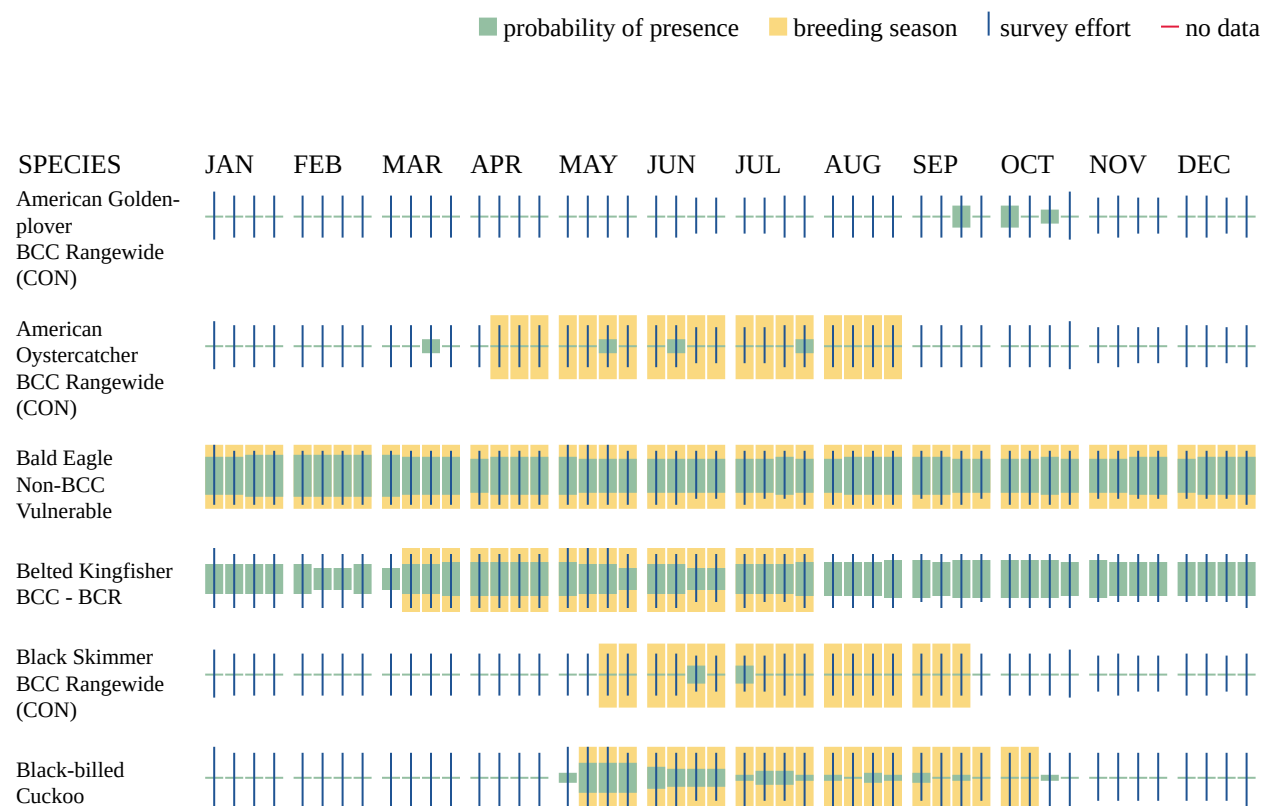
Vertical black lines superimposed on probability of presence bars indicate the number of surveys performed for that species in the 10km grid cell(s) your project area overlaps. The number of surveys is expressed as a range, for example, 33 to 64 surveys.

No Data (—)

A week is marked as having no data if there were no survey events for that week.

Survey Timeframe

Surveys from only the last 10 years are used in order to ensure delivery of currently relevant information. The exception to this is areas off the Atlantic coast, where bird returns are based on all years of available data, since data in these areas is currently much more sparse.







Additional information can be found using the following links:

- Birds of Conservation Concern <https://www.fws.gov/program/migratory-birds/species>
- Measures for avoiding and minimizing impacts to birds <https://www.fws.gov/library/collections/avoiding-and-minimizing-incidental-take-migratory-birds>
- Nationwide conservation measures for birds <https://www.fws.gov/sites/default/files/documents/nationwide-standard-conservation-measures.pdf>

MIGRATORY BIRDS FAQ

Tell me more about conservation measures I can implement to avoid or minimize impacts to migratory birds.

[Nationwide Conservation Measures](#) describes measures that can help avoid and minimize impacts to all birds at any location year round. Implementation of these measures is particularly important when birds are most likely to occur in the project area. When birds may be breeding in the area, identifying the locations of any active nests and avoiding their destruction is a very helpful impact minimization measure. To see when birds are most likely to occur and be breeding in your project area, view the Probability of Presence Summary. [Additional measures](#) or [permits](#) may be advisable depending on the type of activity you are conducting and the type of infrastructure or bird species present on your project site.

What does IPaC use to generate the list of migratory birds that potentially occur in my specified location?

The Migratory Bird Resource List is comprised of USFWS [Birds of Conservation Concern \(BCC\)](#) and other species that may warrant special attention in your project location.

The migratory bird list generated for your project is derived from data provided by the [Avian Knowledge Network \(AKN\)](#). The AKN data is based on a growing collection of [survey, banding, and citizen science datasets](#) and is queried and filtered to return a list of those birds reported as occurring in the 10km grid cell(s) which your project intersects, and that have been identified as warranting special attention because they are a BCC species in that area, an eagle ([Eagle Act](#) requirements may apply), or a species that has a particular vulnerability to offshore activities or development.

Again, the Migratory Bird Resource list includes only a subset of birds that may occur in your project area. It is not representative of all birds that may occur in your project area. To get a list of all birds potentially present in your project area, please visit the [Rapid Avian Information Locator \(RAIL\) Tool](#).

What does IPaC use to generate the probability of presence graphs for the migratory birds potentially occurring in my specified location?

The probability of presence graphs associated with your migratory bird list are based on data provided by the [Avian Knowledge Network \(AKN\)](#). This data is derived from a growing collection of [survey, banding, and citizen science datasets](#).

Probability of presence data is continuously being updated as new and better information becomes available. To learn more about how the probability of presence graphs are produced and how to interpret them, go the Probability of Presence Summary and then click on the "Tell me about these graphs" link.

How do I know if a bird is breeding, wintering or migrating in my area?

To see what part of a particular bird's range your project area falls within (i.e. breeding, wintering, migrating or year-round), you may query your location using the [RAIL Tool](#) and look at the range maps provided for birds in your area at the bottom of the profiles provided for each bird in your results. If a bird on your migratory bird species list has a breeding season associated with it, if that bird does occur in your project area, there may be nests present at some point within the timeframe specified. If "Breeds elsewhere" is indicated, then the bird likely does not breed in your project area.

What are the levels of concern for migratory birds?

Migratory birds delivered through IPaC fall into the following distinct categories of concern:

1. "BCC Rangewide" birds are [Birds of Conservation Concern](#) (BCC) that are of concern throughout their range anywhere within the USA (including Hawaii, the Pacific Islands, Puerto Rico, and the Virgin Islands);
2. "BCC - BCR" birds are BCCs that are of concern only in particular Bird Conservation Regions (BCRs) in the continental USA; and
3. "Non-BCC - Vulnerable" birds are not BCC species in your project area, but appear on your list either because of the [Eagle Act](#) requirements (for eagles) or (for non-eagles) potential susceptibilities in offshore areas from certain types of development or activities (e.g. offshore energy development or longline fishing).

Although it is important to try to avoid and minimize impacts to all birds, efforts should be made, in particular, to avoid and minimize impacts to the birds on this list, especially eagles and BCC species of rangewide concern. For more information on conservation measures you can implement to help avoid and minimize migratory bird impacts and requirements for eagles, please see the FAQs for these topics.

Details about birds that are potentially affected by offshore projects

For additional details about the relative occurrence and abundance of both individual bird species and groups of bird species within your project area off the Atlantic Coast, please visit the [Northeast Ocean Data Portal](#). The Portal also offers data and information about other taxa besides birds that may be helpful to you in your project review. Alternately, you may download the bird model results files underlying the portal maps through the [NOAA NCCOS Integrative Statistical Modeling and Predictive Mapping of Marine Bird Distributions and Abundance on the Atlantic Outer Continental Shelf](#) project webpage.

Bird tracking data can also provide additional details about occurrence and habitat use throughout the year, including migration. Models relying on survey data may not include this information. For additional information on marine bird tracking data, see the [Diving Bird Study](#) and the [nanotag studies](#) or contact [Caleb Spiegel](#) or [Pam Loring](#).

What if I have eagles on my list?

If your project has the potential to disturb or kill eagles, you may need to [obtain a permit](#) to avoid violating the Eagle Act should such impacts occur.

Proper Interpretation and Use of Your Migratory Bird Report

The migratory bird list generated is not a list of all birds in your project area, only a subset of birds of priority concern. To learn more about how your list is generated, and see options for identifying what other birds may be in your project area, please see the FAQ "What does IPaC use to generate the migratory birds potentially occurring in my specified location". Please be aware this report provides the "probability of presence" of birds within the 10 km grid cell(s) that overlap your project; not your exact project footprint. On the graphs provided, please also look carefully at the survey effort (indicated by the black vertical bar) and for the existence of the "no data" indicator (a red horizontal bar). A high survey effort is the key component. If the survey effort is high, then the probability of presence score can be viewed as more dependable. In contrast, a low survey effort bar or no data bar means a lack of data and, therefore, a lack of

certainty about presence of the species. This list is not perfect; it is simply a starting point for identifying what birds of concern have the potential to be in your project area, when they might be there, and if they might be breeding (which means nests might be present). The list helps you know what to look for to confirm presence, and helps guide you in knowing when to implement conservation measures to avoid or minimize potential impacts from your project activities, should presence be confirmed. To learn more about conservation measures, visit the FAQ "Tell me about conservation measures I can implement to avoid or minimize impacts to migratory birds" at the bottom of your migratory bird trust resources page.

WETLANDS

Impacts to [NWI wetlands](#) and other aquatic habitats may be subject to regulation under Section 404 of the Clean Water Act, or other State/Federal statutes.

For more information please contact the Regulatory Program of the local [U.S. Army Corps of Engineers District](#).

Please note that the NWI data being shown may be out of date. We are currently working to update our NWI data set. We recommend you verify these results with a site visit to determine the actual extent of wetlands on site.

ESTUARINE AND MARINE DEEPWATER

- [E1UBL6](#)
- [E1UBL](#)

RIVERINE

- [R1UBV](#)
-

IPAC USER CONTACT INFORMATION

Agency: Private Entity
Name: Sophia Mottola
Address: 10 Hemingway Drive, 2nd Floor
City: East Providence
State: RI
Zip: 02915
Email: smottola@trccompanies.com
Phone: 4013301210



United States Department of the Interior

FISH AND WILDLIFE SERVICE
New York Ecological Services Field Office
3817 Luker Road
Cortland, NY 13045-9385
Phone: (607) 753-9334 Fax: (607) 753-9699
Email Address: fw5es_nyfo@fws.gov



In Reply Refer To:

July 27, 2023

Project Code: 2023-0110153

Project Name: Champlain Hudson Power Express Hudson River Marine Segment

Subject: List of threatened and endangered species that may occur in your proposed project location or may be affected by your proposed project

To Whom It May Concern:

The enclosed species list identifies threatened, endangered, proposed and candidate species, as well as proposed and final designated critical habitat, that may occur within the boundary of your proposed project and/or may be affected by your proposed project. The species list fulfills the requirements of the U.S. Fish and Wildlife Service (Service) under section 7(c) of the Endangered Species Act (Act) of 1973, as amended (16 U.S.C. 1531 *et seq.*).

New information based on updated surveys, changes in the abundance and distribution of species, changed habitat conditions, or other factors could change this list. Please feel free to contact us if you need more current information or assistance regarding the potential impacts to federally proposed, listed, and candidate species and federally designated and proposed critical habitat. Please note that under 50 CFR 402.12(e) of the regulations implementing section 7 of the Act, the accuracy of this species list should be verified after 90 days. This verification can be completed formally or informally as desired. The Service recommends that verification be completed by visiting the ECOS-IPaC website at regular intervals during project planning and implementation for updates to species lists and information. An updated list may be requested through the ECOS-IPaC system by completing the same process used to receive the enclosed list.

The purpose of the Act is to provide a means whereby threatened and endangered species and the ecosystems upon which they depend may be conserved. Under sections 7(a)(1) and 7(a)(2) of the Act and its implementing regulations (50 CFR 402 *et seq.*), Federal agencies are required to utilize their authorities to carry out programs for the conservation of threatened and endangered species and to determine whether projects may affect threatened and endangered species and/or designated critical habitat.

A Biological Assessment is required for construction projects (or other undertakings having similar physical impacts) that are major Federal actions significantly affecting the quality of the human environment as defined in the National Environmental Policy Act (42 U.S.C. 4332(2)).

(c)). For projects other than major construction activities, the Service suggests that a biological evaluation similar to a Biological Assessment be prepared to determine whether the project may affect listed or proposed species and/or designated or proposed critical habitat. Recommended contents of a Biological Assessment are described at 50 CFR 402.12.

If a Federal agency determines, based on the Biological Assessment or biological evaluation, that listed species and/or designated critical habitat may be affected by the proposed project, the agency is required to consult with the Service pursuant to 50 CFR 402. In addition, the Service recommends that candidate species, proposed species and proposed critical habitat be addressed within the consultation. More information on the regulations and procedures for section 7 consultation, including the role of permit or license applicants, can be found in the "Endangered Species Consultation Handbook" at:

<http://www.fws.gov/endangered/esa-library/pdf/TOC-GLOS.PDF>

Migratory Birds: In addition to responsibilities to protect threatened and endangered species under the Endangered Species Act (ESA), there are additional responsibilities under the Migratory Bird Treaty Act (MBTA) and the Bald and Golden Eagle Protection Act (BGEPA) to protect native birds from project-related impacts. Any activity, intentional or unintentional, resulting in take of migratory birds, including eagles, is prohibited unless otherwise permitted by the U.S. Fish and Wildlife Service (50 C.F.R. Sec. 10.12 and 16 U.S.C. Sec. 668(a)). For more information regarding these Acts see <https://www.fws.gov/birds/policies-and-regulations.php>.

The MBTA has no provision for allowing take of migratory birds that may be unintentionally killed or injured by otherwise lawful activities. It is the responsibility of the project proponent to comply with these Acts by identifying potential impacts to migratory birds and eagles within applicable NEPA documents (when there is a federal nexus) or a Bird/Eagle Conservation Plan (when there is no federal nexus). Proponents should implement conservation measures to avoid or minimize the production of project-related stressors or minimize the exposure of birds and their resources to the project-related stressors. For more information on avian stressors and recommended conservation measures see <https://www.fws.gov/birds/bird-enthusiasts/threats-to-birds.php>.

In addition to MBTA and BGEPA, Executive Order 13186: *Responsibilities of Federal Agencies to Protect Migratory Birds*, obligates all Federal agencies that engage in or authorize activities that might affect migratory birds, to minimize those effects and encourage conservation measures that will improve bird populations. Executive Order 13186 provides for the protection of both migratory birds and migratory bird habitat. For information regarding the implementation of Executive Order 13186, please visit <https://www.fws.gov/birds/policies-and-regulations/executive-orders/e0-13186.php>.

We appreciate your concern for threatened and endangered species. The Service encourages Federal agencies to include conservation of threatened and endangered species into their project planning to further the purposes of the Act. **Please include the Consultation Code in the header of this letter with any request for consultation or correspondence about your project that you submit to our office.**

Note: IPaC has provided all available attachments because this project is in multiple field office jurisdictions.

Attachment(s):

- Official Species List
 - USFWS National Wildlife Refuges and Fish Hatcheries
 - Migratory Birds
 - Wetlands
-

OFFICIAL SPECIES LIST

This list is provided pursuant to Section 7 of the Endangered Species Act, and fulfills the requirement for Federal agencies to "request of the Secretary of the Interior information whether any species which is listed or proposed to be listed may be present in the area of a proposed action".

This species list is provided by:

New York Ecological Services Field Office

3817 Luker Road
Cortland, NY 13045-9385
(607) 753-9334

This project's location is within the jurisdiction of multiple offices. However, only one species list document will be provided for all offices. The species and critical habitats in this document reflect the aggregation of those that fall in each of the affiliated office's jurisdiction. Other offices affiliated with the project:

Long Island Ecological Services Field Office

340 Smith Road
Shirley, NY 11967-2258
(631) 286-0485

PROJECT SUMMARY

Project Code: 2023-0110153
Project Name: Champlain Hudson Power Express Hudson River Marine Segment
Project Type: Transmission Line - New Constr - Below Ground
Project Description: List of threatened and endangered species that may occur in the Hudson River Marine Segment project location or may be affected by the proposed project.

Project Location:

The approximate location of the project can be viewed in Google Maps: <https://www.google.com/maps/@41.30204285,-73.96762316221358,14z>



Counties: New York

ENDANGERED SPECIES ACT SPECIES

There is a total of 4 threatened, endangered, or candidate species on this species list.

Species on this list should be considered in an effects analysis for your project and could include species that exist in another geographic area. For example, certain fish may appear on the species list because a project could affect downstream species.

IPaC does not display listed species or critical habitats under the sole jurisdiction of NOAA Fisheries¹, as USFWS does not have the authority to speak on behalf of NOAA and the Department of Commerce.

See the "Critical habitats" section below for those critical habitats that lie wholly or partially within your project area under this office's jurisdiction. Please contact the designated FWS office if you have questions.

-
1. [NOAA Fisheries](#), also known as the National Marine Fisheries Service (NMFS), is an office of the National Oceanic and Atmospheric Administration within the Department of Commerce.

MAMMALS

NAME	STATUS
Indiana Bat <i>Myotis sodalis</i> There is final critical habitat for this species. Your location does not overlap the critical habitat. Species profile: https://ecos.fws.gov/ecp/species/5949	Endangered
Northern Long-eared Bat <i>Myotis septentrionalis</i> No critical habitat has been designated for this species. Species profile: https://ecos.fws.gov/ecp/species/9045	Endangered

INSECTS

NAME	STATUS
Monarch Butterfly <i>Danaus plexippus</i> No critical habitat has been designated for this species. Species profile: https://ecos.fws.gov/ecp/species/9743	Candidate

FLOWERING PLANTS

NAME	STATUS
Small Whorled Pogonia <i>Isotria medeoloides</i> Population: No critical habitat has been designated for this species. Species profile: https://ecos.fws.gov/ecp/species/1890	Threatened

CRITICAL HABITATS

THERE ARE NO CRITICAL HABITATS WITHIN YOUR PROJECT AREA UNDER THIS OFFICE'S JURISDICTION.

YOU ARE STILL REQUIRED TO DETERMINE IF YOUR PROJECT(S) MAY HAVE EFFECTS ON ALL ABOVE LISTED SPECIES.

USFWS NATIONAL WILDLIFE REFUGE LANDS AND FISH HATCHERIES

Any activity proposed on lands managed by the [National Wildlife Refuge](#) system must undergo a 'Compatibility Determination' conducted by the Refuge. Please contact the individual Refuges to discuss any questions or concerns.

THERE ARE NO REFUGE LANDS OR FISH HATCHERIES WITHIN YOUR PROJECT AREA.

MIGRATORY BIRDS

Certain birds are protected under the Migratory Bird Treaty Act¹ and the Bald and Golden Eagle Protection Act².

Any person or organization who plans or conducts activities that may result in impacts to migratory birds, eagles, and their habitats should follow appropriate regulations and consider implementing appropriate conservation measures, as described [below](#).

1. The [Migratory Birds Treaty Act](#) of 1918.
2. The [Bald and Golden Eagle Protection Act](#) of 1940.
3. 50 C.F.R. Sec. 10.12 and 16 U.S.C. Sec. 668(a)

MIGRATORY BIRD INFORMATION WAS NOT AVAILABLE WHEN THIS SPECIES LIST WAS GENERATED. PLEASE CONTACT THE FIELD OFFICE FOR FURTHER INFORMATION.

MIGRATORY BIRDS FAQ

Tell me more about conservation measures I can implement to avoid or minimize impacts to migratory birds.

[Nationwide Conservation Measures](#) describes measures that can help avoid and minimize impacts to all birds at any location year round. Implementation of these measures is particularly important when birds are most likely to occur in the project area. When birds may be breeding in the area, identifying the locations of any active nests and avoiding their destruction is a very helpful impact minimization measure. To see when birds are most likely to occur and be breeding in your project area, view the Probability of Presence Summary. [Additional measures](#) or [permits](#) may be advisable depending on the type of activity you are conducting and the type of infrastructure or bird species present on your project site.

What does IPaC use to generate the list of migratory birds that potentially occur in my specified location?

The Migratory Bird Resource List is comprised of USFWS [Birds of Conservation Concern \(BCC\)](#) and other species that may warrant special attention in your project location.

The migratory bird list generated for your project is derived from data provided by the [Avian Knowledge Network \(AKN\)](#). The AKN data is based on a growing collection of [survey, banding, and citizen science datasets](#) and is queried and filtered to return a list of those birds reported as occurring in the 10km grid cell(s) which your project intersects, and that have been identified as warranting special attention because they are a BCC species in that area, an eagle ([Eagle Act](#) requirements may apply), or a species that has a particular vulnerability to offshore activities or development.

Again, the Migratory Bird Resource list includes only a subset of birds that may occur in your project area. It is not representative of all birds that may occur in your project area. To get a list

of all birds potentially present in your project area, please visit the [Rapid Avian Information Locator \(RAIL\) Tool](#).

What does IPaC use to generate the probability of presence graphs for the migratory birds potentially occurring in my specified location?

The probability of presence graphs associated with your migratory bird list are based on data provided by the [Avian Knowledge Network \(AKN\)](#). This data is derived from a growing collection of [survey, banding, and citizen science datasets](#).

Probability of presence data is continuously being updated as new and better information becomes available. To learn more about how the probability of presence graphs are produced and how to interpret them, go the Probability of Presence Summary and then click on the "Tell me about these graphs" link.

How do I know if a bird is breeding, wintering or migrating in my area?

To see what part of a particular bird's range your project area falls within (i.e. breeding, wintering, migrating or year-round), you may query your location using the [RAIL Tool](#) and look at the range maps provided for birds in your area at the bottom of the profiles provided for each bird in your results. If a bird on your migratory bird species list has a breeding season associated with it, if that bird does occur in your project area, there may be nests present at some point within the timeframe specified. If "Breeds elsewhere" is indicated, then the bird likely does not breed in your project area.

What are the levels of concern for migratory birds?

Migratory birds delivered through IPaC fall into the following distinct categories of concern:

1. "BCC Rangewide" birds are [Birds of Conservation Concern](#) (BCC) that are of concern throughout their range anywhere within the USA (including Hawaii, the Pacific Islands, Puerto Rico, and the Virgin Islands);
2. "BCC - BCR" birds are BCCs that are of concern only in particular Bird Conservation Regions (BCRs) in the continental USA; and
3. "Non-BCC - Vulnerable" birds are not BCC species in your project area, but appear on your list either because of the [Eagle Act](#) requirements (for eagles) or (for non-eagles) potential susceptibilities in offshore areas from certain types of development or activities (e.g. offshore energy development or longline fishing).

Although it is important to try to avoid and minimize impacts to all birds, efforts should be made, in particular, to avoid and minimize impacts to the birds on this list, especially eagles and BCC species of rangewide concern. For more information on conservation measures you can implement to help avoid and minimize migratory bird impacts and requirements for eagles, please see the FAQs for these topics.

Details about birds that are potentially affected by offshore projects

For additional details about the relative occurrence and abundance of both individual bird species and groups of bird species within your project area off the Atlantic Coast, please visit the [Northeast Ocean Data Portal](#). The Portal also offers data and information about other taxa besides birds that may be helpful to you in your project review. Alternately, you may download the bird model results files underlying the portal maps through the [NOAA NCCOS Integrative Statistical](#)

[Modeling and Predictive Mapping of Marine Bird Distributions and Abundance on the Atlantic Outer Continental Shelf](#) project webpage.

Bird tracking data can also provide additional details about occurrence and habitat use throughout the year, including migration. Models relying on survey data may not include this information. For additional information on marine bird tracking data, see the [Diving Bird Study](#) and the [nanotag studies](#) or contact [Caleb Spiegel](#) or [Pam Loring](#).

What if I have eagles on my list?

If your project has the potential to disturb or kill eagles, you may need to [obtain a permit](#) to avoid violating the Eagle Act should such impacts occur.

Proper Interpretation and Use of Your Migratory Bird Report

The migratory bird list generated is not a list of all birds in your project area, only a subset of birds of priority concern. To learn more about how your list is generated, and see options for identifying what other birds may be in your project area, please see the FAQ "What does IPaC use to generate the migratory birds potentially occurring in my specified location". Please be aware this report provides the "probability of presence" of birds within the 10 km grid cell(s) that overlap your project; not your exact project footprint. On the graphs provided, please also look carefully at the survey effort (indicated by the black vertical bar) and for the existence of the "no data" indicator (a red horizontal bar). A high survey effort is the key component. If the survey effort is high, then the probability of presence score can be viewed as more dependable. In contrast, a low survey effort bar or no data bar means a lack of data and, therefore, a lack of certainty about presence of the species. This list is not perfect; it is simply a starting point for identifying what birds of concern have the potential to be in your project area, when they might be there, and if they might be breeding (which means nests might be present). The list helps you know what to look for to confirm presence, and helps guide you in knowing when to implement conservation measures to avoid or minimize potential impacts from your project activities, should presence be confirmed. To learn more about conservation measures, visit the FAQ "Tell me about conservation measures I can implement to avoid or minimize impacts to migratory birds" at the bottom of your migratory bird trust resources page.

WETLANDS

Impacts to [NWI wetlands](#) and other aquatic habitats may be subject to regulation under Section 404 of the Clean Water Act, or other State/Federal statutes.

For more information please contact the Regulatory Program of the local [U.S. Army Corps of Engineers District](#).

Please note that the NWI data being shown may be out of date. We are currently working to update our NWI data set. We recommend you verify these results with a site visit to determine the actual extent of wetlands on site.

ESTUARINE AND MARINE DEEPWATER

- [E1UBL](#)
- [E1UBL6](#)

RIVERINE

- [R1UBV](#)
-

IPAC USER CONTACT INFORMATION

Agency: TRC

Name: Sophia Mottola

Address: 10 Hemingway Drive, 2nd Floor

City: East Providence

State: RI

Zip: 02915

Email: smottola@trccompanies.com

Phone: 4013301210



United States Department of the Interior

FISH AND WILDLIFE SERVICE
New York Ecological Services Field Office
3817 Luker Road
Cortland, NY 13045-9385
Phone: (607) 753-9334 Fax: (607) 753-9699
Email Address: fw5es_nyfo@fws.gov



In Reply Refer To:

August 01, 2023

Project Code: 2023-0111298

Project Name: Champlain Hudson Power Express Hudson River Marine Segment

Subject: List of threatened and endangered species that may occur in your proposed project location or may be affected by your proposed project

To Whom It May Concern:

The enclosed species list identifies threatened, endangered, proposed and candidate species, as well as proposed and final designated critical habitat, that may occur within the boundary of your proposed project and/or may be affected by your proposed project. The species list fulfills the requirements of the U.S. Fish and Wildlife Service (Service) under section 7(c) of the Endangered Species Act (Act) of 1973, as amended (16 U.S.C. 1531 *et seq.*).

New information based on updated surveys, changes in the abundance and distribution of species, changed habitat conditions, or other factors could change this list. Please feel free to contact us if you need more current information or assistance regarding the potential impacts to federally proposed, listed, and candidate species and federally designated and proposed critical habitat. Please note that under 50 CFR 402.12(e) of the regulations implementing section 7 of the Act, the accuracy of this species list should be verified after 90 days. This verification can be completed formally or informally as desired. The Service recommends that verification be completed by visiting the ECOS-IPaC website at regular intervals during project planning and implementation for updates to species lists and information. An updated list may be requested through the ECOS-IPaC system by completing the same process used to receive the enclosed list.

The purpose of the Act is to provide a means whereby threatened and endangered species and the ecosystems upon which they depend may be conserved. Under sections 7(a)(1) and 7(a)(2) of the Act and its implementing regulations (50 CFR 402 *et seq.*), Federal agencies are required to utilize their authorities to carry out programs for the conservation of threatened and endangered species and to determine whether projects may affect threatened and endangered species and/or designated critical habitat.

A Biological Assessment is required for construction projects (or other undertakings having similar physical impacts) that are major Federal actions significantly affecting the quality of the human environment as defined in the National Environmental Policy Act (42 U.S.C. 4332(2)).

(c)). For projects other than major construction activities, the Service suggests that a biological evaluation similar to a Biological Assessment be prepared to determine whether the project may affect listed or proposed species and/or designated or proposed critical habitat. Recommended contents of a Biological Assessment are described at 50 CFR 402.12.

If a Federal agency determines, based on the Biological Assessment or biological evaluation, that listed species and/or designated critical habitat may be affected by the proposed project, the agency is required to consult with the Service pursuant to 50 CFR 402. In addition, the Service recommends that candidate species, proposed species and proposed critical habitat be addressed within the consultation. More information on the regulations and procedures for section 7 consultation, including the role of permit or license applicants, can be found in the "Endangered Species Consultation Handbook" at:

<http://www.fws.gov/endangered/esa-library/pdf/TOC-GLOS.PDF>

Migratory Birds: In addition to responsibilities to protect threatened and endangered species under the Endangered Species Act (ESA), there are additional responsibilities under the Migratory Bird Treaty Act (MBTA) and the Bald and Golden Eagle Protection Act (BGEPA) to protect native birds from project-related impacts. Any activity, intentional or unintentional, resulting in take of migratory birds, including eagles, is prohibited unless otherwise permitted by the U.S. Fish and Wildlife Service (50 C.F.R. Sec. 10.12 and 16 U.S.C. Sec. 668(a)). For more information regarding these Acts see <https://www.fws.gov/birds/policies-and-regulations.php>.

The MBTA has no provision for allowing take of migratory birds that may be unintentionally killed or injured by otherwise lawful activities. It is the responsibility of the project proponent to comply with these Acts by identifying potential impacts to migratory birds and eagles within applicable NEPA documents (when there is a federal nexus) or a Bird/Eagle Conservation Plan (when there is no federal nexus). Proponents should implement conservation measures to avoid or minimize the production of project-related stressors or minimize the exposure of birds and their resources to the project-related stressors. For more information on avian stressors and recommended conservation measures see <https://www.fws.gov/birds/bird-enthusiasts/threats-to-birds.php>.

In addition to MBTA and BGEPA, Executive Order 13186: *Responsibilities of Federal Agencies to Protect Migratory Birds*, obligates all Federal agencies that engage in or authorize activities that might affect migratory birds, to minimize those effects and encourage conservation measures that will improve bird populations. Executive Order 13186 provides for the protection of both migratory birds and migratory bird habitat. For information regarding the implementation of Executive Order 13186, please visit <https://www.fws.gov/birds/policies-and-regulations/executive-orders/e0-13186.php>.

We appreciate your concern for threatened and endangered species. The Service encourages Federal agencies to include conservation of threatened and endangered species into their project planning to further the purposes of the Act. **Please include the Consultation Code in the header of this letter with any request for consultation or correspondence about your project that you submit to our office.**

Note: IPaC has provided all available attachments because this project is in multiple field office jurisdictions.

Attachment(s):

- Official Species List
 - USFWS National Wildlife Refuges and Fish Hatcheries
 - Migratory Birds
 - Wetlands
-

OFFICIAL SPECIES LIST

This list is provided pursuant to Section 7 of the Endangered Species Act, and fulfills the requirement for Federal agencies to "request of the Secretary of the Interior information whether any species which is listed or proposed to be listed may be present in the area of a proposed action".

This species list is provided by:

New York Ecological Services Field Office

3817 Luker Road

Cortland, NY 13045-9385

(607) 753-9334

This project's location is within the jurisdiction of multiple offices. However, only one species list document will be provided for all offices. The species and critical habitats in this document reflect the aggregation of those that fall in each of the affiliated office's jurisdiction. Other offices affiliated with the project:

Long Island Ecological Services Field Office

340 Smith Road

Shirley, NY 11967-2258

(631) 286-0485

PROJECT SUMMARY

Project Code: 2023-0111298
Project Name: Champlain Hudson Power Express Hudson River Marine Segment
Project Type: Transmission Line - New Constr - Below Ground
Project Description: List of threatened and endangered species that may occur in the Hudson River Marine Segment project location or may be affected by the proposed project.

Project Location:

The approximate location of the project can be viewed in Google Maps: <https://www.google.com/maps/@41.30204285,-73.96762316221358,14z>



Counties: New York

ENDANGERED SPECIES ACT SPECIES

There is a total of 4 threatened, endangered, or candidate species on this species list.

Species on this list should be considered in an effects analysis for your project and could include species that exist in another geographic area. For example, certain fish may appear on the species list because a project could affect downstream species.

IPaC does not display listed species or critical habitats under the sole jurisdiction of NOAA Fisheries¹, as USFWS does not have the authority to speak on behalf of NOAA and the Department of Commerce.

See the "Critical habitats" section below for those critical habitats that lie wholly or partially within your project area under this office's jurisdiction. Please contact the designated FWS office if you have questions.

-
1. [NOAA Fisheries](#), also known as the National Marine Fisheries Service (NMFS), is an office of the National Oceanic and Atmospheric Administration within the Department of Commerce.

MAMMALS

NAME	STATUS
Indiana Bat <i>Myotis sodalis</i> There is final critical habitat for this species. Your location does not overlap the critical habitat. Species profile: https://ecos.fws.gov/ecp/species/5949	Endangered
Northern Long-eared Bat <i>Myotis septentrionalis</i> No critical habitat has been designated for this species. Species profile: https://ecos.fws.gov/ecp/species/9045	Endangered

INSECTS

NAME	STATUS
Monarch Butterfly <i>Danaus plexippus</i> No critical habitat has been designated for this species. Species profile: https://ecos.fws.gov/ecp/species/9743	Candidate

FLOWERING PLANTS

NAME	STATUS
Small Whorled Pogonia <i>Isotria medeoloides</i> Population: No critical habitat has been designated for this species. Species profile: https://ecos.fws.gov/ecp/species/1890	Threatened

CRITICAL HABITATS

THERE ARE NO CRITICAL HABITATS WITHIN YOUR PROJECT AREA UNDER THIS OFFICE'S JURISDICTION.

YOU ARE STILL REQUIRED TO DETERMINE IF YOUR PROJECT(S) MAY HAVE EFFECTS ON ALL ABOVE LISTED SPECIES.

USFWS NATIONAL WILDLIFE REFUGE LANDS AND FISH HATCHERIES

Any activity proposed on lands managed by the [National Wildlife Refuge](#) system must undergo a 'Compatibility Determination' conducted by the Refuge. Please contact the individual Refuges to discuss any questions or concerns.

THERE ARE NO REFUGE LANDS OR FISH HATCHERIES WITHIN YOUR PROJECT AREA.

MIGRATORY BIRDS

Certain birds are protected under the Migratory Bird Treaty Act¹ and the Bald and Golden Eagle Protection Act².

Any person or organization who plans or conducts activities that may result in impacts to migratory birds, eagles, and their habitats should follow appropriate regulations and consider implementing appropriate conservation measures, as described [below](#).

-
1. The [Migratory Birds Treaty Act](#) of 1918.
 2. The [Bald and Golden Eagle Protection Act](#) of 1940.
 3. 50 C.F.R. Sec. 10.12 and 16 U.S.C. Sec. 668(a)

The birds listed below are birds of particular concern either because they occur on the [USFWS Birds of Conservation Concern \(BCC\)](#) list or warrant special attention in your project location. To learn more about the levels of concern for birds on your list and how this list is generated, see the FAQ [below](#). This is not a list of every bird you may find in this location, nor a guarantee that every bird on this list will be found in your project area. To see exact locations of where birders and the general public have sighted birds in and around your project area, visit the [E-bird data mapping tool](#) (Tip: enter your location, desired date range and a species on your list). For projects that occur off the Atlantic Coast, additional maps and models detailing the relative occurrence and abundance of bird species on your list are available. Links to additional information about Atlantic Coast birds, and other important information about your migratory bird list, including how to properly interpret and use your migratory bird report, can be found [below](#).

For guidance on when to schedule activities or implement avoidance and minimization measures to reduce impacts to migratory birds on your list, click on the PROBABILITY OF PRESENCE SUMMARY at the top of your list to see when these birds are most likely to be present and breeding in your project area.

NAME	BREEDING SEASON
American Golden-plover <i>Pluvialis dominica</i> This is a Bird of Conservation Concern (BCC) throughout its range in the continental USA and Alaska.	Breeds elsewhere
American Oystercatcher <i>Haematopus palliatus</i> This is a Bird of Conservation Concern (BCC) throughout its range in the continental USA and Alaska. https://ecos.fws.gov/ecp/species/8935	Breeds Apr 15 to Aug 31

NAME	BREEDING SEASON
Bald Eagle <i>Haliaeetus leucocephalus</i> This is not a Bird of Conservation Concern (BCC) in this area, but warrants attention because of the Eagle Act or for potential susceptibilities in offshore areas from certain types of development or activities.	Breeds Sep 1 to Aug 31
Belted Kingfisher <i>Megaceryle alcyon</i> This is a Bird of Conservation Concern (BCC) only in particular Bird Conservation Regions (BCRs) in the continental USA	Breeds Mar 15 to Jul 25
Black Skimmer <i>Rynchops niger</i> This is a Bird of Conservation Concern (BCC) throughout its range in the continental USA and Alaska. https://ecos.fws.gov/ecp/species/5234	Breeds May 20 to Sep 15
Black-billed Cuckoo <i>Coccyzus erythrophthalmus</i> This is a Bird of Conservation Concern (BCC) throughout its range in the continental USA and Alaska. https://ecos.fws.gov/ecp/species/9399	Breeds May 15 to Oct 10
Black-capped Chickadee <i>Poecile atricapillus praticus</i> This is a Bird of Conservation Concern (BCC) only in particular Bird Conservation Regions (BCRs) in the continental USA	Breeds Apr 10 to Jul 31
Blue-winged Warbler <i>Vermivora pinus</i> This is a Bird of Conservation Concern (BCC) only in particular Bird Conservation Regions (BCRs) in the continental USA	Breeds May 1 to Jun 30
Bobolink <i>Dolichonyx oryzivorus</i> This is a Bird of Conservation Concern (BCC) throughout its range in the continental USA and Alaska.	Breeds May 20 to Jul 31
Canada Warbler <i>Cardellina canadensis</i> This is a Bird of Conservation Concern (BCC) throughout its range in the continental USA and Alaska.	Breeds May 20 to Aug 10
Cerulean Warbler <i>Dendroica cerulea</i> This is a Bird of Conservation Concern (BCC) throughout its range in the continental USA and Alaska. https://ecos.fws.gov/ecp/species/2974	Breeds Apr 20 to Jul 20
Chimney Swift <i>Chaetura pelagica</i> This is a Bird of Conservation Concern (BCC) throughout its range in the continental USA and Alaska.	Breeds Mar 15 to Aug 25
Eastern Meadowlark <i>Sturnella magna</i> This is a Bird of Conservation Concern (BCC) only in particular Bird Conservation Regions (BCRs) in the continental USA	Breeds Apr 25 to Aug 31
Eastern Whip-poor-will <i>Antrostomus vociferus</i> This is a Bird of Conservation Concern (BCC) throughout its range in the continental USA and Alaska.	Breeds May 1 to Aug 20

NAME	BREEDING SEASON
Evening Grosbeak <i>Coccothraustes vespertinus</i> This is a Bird of Conservation Concern (BCC) throughout its range in the continental USA and Alaska.	Breeds May 15 to Aug 10
Golden Eagle <i>Aquila chrysaetos</i> This is not a Bird of Conservation Concern (BCC) in this area, but warrants attention because of the Eagle Act or for potential susceptibilities in offshore areas from certain types of development or activities. https://ecos.fws.gov/ecp/species/1680	Breeds Jan 1 to Aug 31
Golden-winged Warbler <i>Vermivora chrysoptera</i> This is a Bird of Conservation Concern (BCC) throughout its range in the continental USA and Alaska. https://ecos.fws.gov/ecp/species/8745	Breeds May 1 to Jul 20
Hudsonian Godwit <i>Limosa haemastica</i> This is a Bird of Conservation Concern (BCC) throughout its range in the continental USA and Alaska.	Breeds elsewhere
Kentucky Warbler <i>Oporornis formosus</i> This is a Bird of Conservation Concern (BCC) throughout its range in the continental USA and Alaska.	Breeds Apr 20 to Aug 20
Lesser Yellowlegs <i>Tringa flavipes</i> This is a Bird of Conservation Concern (BCC) throughout its range in the continental USA and Alaska. https://ecos.fws.gov/ecp/species/9679	Breeds elsewhere
Long-eared Owl <i>asio otus</i> This is a Bird of Conservation Concern (BCC) throughout its range in the continental USA and Alaska. https://ecos.fws.gov/ecp/species/3631	Breeds Mar 1 to Jul 15
Northern Saw-whet Owl <i>Aegolius acadicus acadicus</i> This is a Bird of Conservation Concern (BCC) only in particular Bird Conservation Regions (BCRs) in the continental USA	Breeds Mar 1 to Jul 31
Prairie Warbler <i>Dendroica discolor</i> This is a Bird of Conservation Concern (BCC) throughout its range in the continental USA and Alaska.	Breeds May 1 to Jul 31
Prothonotary Warbler <i>Protonotaria citrea</i> This is a Bird of Conservation Concern (BCC) throughout its range in the continental USA and Alaska.	Breeds Apr 1 to Jul 31
Purple Sandpiper <i>Calidris maritima</i> This is a Bird of Conservation Concern (BCC) throughout its range in the continental USA and Alaska.	Breeds elsewhere
Red-headed Woodpecker <i>Melanerpes erythrocephalus</i> This is a Bird of Conservation Concern (BCC) throughout its range in the continental USA and Alaska.	Breeds May 10 to Sep 10

NAME	BREEDING SEASON
Ruddy Turnstone <i>Arenaria interpres morinella</i> This is a Bird of Conservation Concern (BCC) only in particular Bird Conservation Regions (BCRs) in the continental USA	Breeds elsewhere
Rusty Blackbird <i>Euphagus carolinus</i> This is a Bird of Conservation Concern (BCC) only in particular Bird Conservation Regions (BCRs) in the continental USA	Breeds elsewhere
Short-billed Dowitcher <i>Limnodromus griseus</i> This is a Bird of Conservation Concern (BCC) throughout its range in the continental USA and Alaska. https://ecos.fws.gov/ecp/species/9480	Breeds elsewhere
Willet <i>Tringa semipalmata</i> This is a Bird of Conservation Concern (BCC) throughout its range in the continental USA and Alaska.	Breeds Apr 20 to Aug 5
Wood Thrush <i>Hylocichla mustelina</i> This is a Bird of Conservation Concern (BCC) throughout its range in the continental USA and Alaska.	Breeds May 10 to Aug 31

PROBABILITY OF PRESENCE SUMMARY

The graphs below provide our best understanding of when birds of concern are most likely to be present in your project area. This information can be used to tailor and schedule your project activities to avoid or minimize impacts to birds. Please make sure you read and understand the FAQ "Proper Interpretation and Use of Your Migratory Bird Report" before using or attempting to interpret this report.

Probability of Presence (■)

Each green bar represents the bird's relative probability of presence in the 10km grid cell(s) your project overlaps during a particular week of the year. (A year is represented as 12 4-week months.) A taller bar indicates a higher probability of species presence. The survey effort (see below) can be used to establish a level of confidence in the presence score. One can have higher confidence in the presence score if the corresponding survey effort is also high.

How is the probability of presence score calculated? The calculation is done in three steps:

1. The probability of presence for each week is calculated as the number of survey events in the week where the species was detected divided by the total number of survey events for that week. For example, if in week 12 there were 20 survey events and the Spotted Towhee was found in 5 of them, the probability of presence of the Spotted Towhee in week 12 is 0.25.
2. To properly present the pattern of presence across the year, the relative probability of presence is calculated. This is the probability of presence divided by the maximum probability of presence across all weeks. For example, imagine the probability of presence in week 20 for the Spotted Towhee is 0.05, and that the probability of presence at week 12

(0.25) is the maximum of any week of the year. The relative probability of presence on week 12 is $0.25/0.25 = 1$; at week 20 it is $0.05/0.25 = 0.2$.

3. The relative probability of presence calculated in the previous step undergoes a statistical conversion so that all possible values fall between 0 and 10, inclusive. This is the probability of presence score.

Breeding Season (■)

Yellow bars denote a very liberal estimate of the time-frame inside which the bird breeds across its entire range. If there are no yellow bars shown for a bird, it does not breed in your project area.

Survey Effort (|)

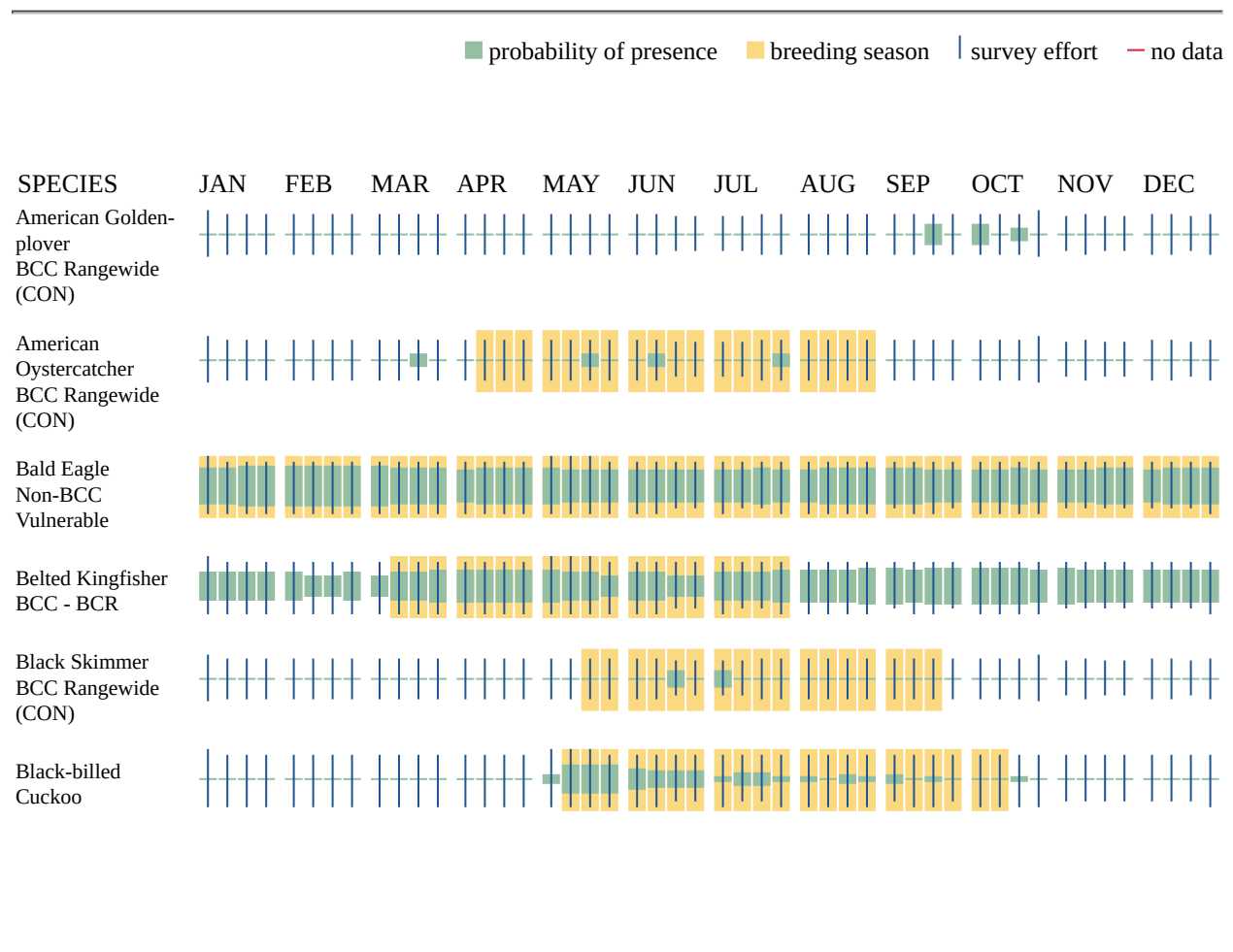
Vertical black lines superimposed on probability of presence bars indicate the number of surveys performed for that species in the 10km grid cell(s) your project area overlaps. The number of surveys is expressed as a range, for example, 33 to 64 surveys.

No Data (—)

A week is marked as having no data if there were no survey events for that week.

Survey Timeframe

Surveys from only the last 10 years are used in order to ensure delivery of currently relevant information. The exception to this is areas off the Atlantic coast, where bird returns are based on all years of available data, since data in these areas is currently much more sparse.







Additional information can be found using the following links:

- Birds of Conservation Concern <https://www.fws.gov/program/migratory-birds/species>
- Measures for avoiding and minimizing impacts to birds <https://www.fws.gov/library/collections/avoiding-and-minimizing-incidental-take-migratory-birds>
- Nationwide conservation measures for birds <https://www.fws.gov/sites/default/files/documents/nationwide-standard-conservation-measures.pdf>

MIGRATORY BIRDS FAQ

Tell me more about conservation measures I can implement to avoid or minimize impacts to migratory birds.

[Nationwide Conservation Measures](#) describes measures that can help avoid and minimize impacts to all birds at any location year round. Implementation of these measures is particularly important when birds are most likely to occur in the project area. When birds may be breeding in the area, identifying the locations of any active nests and avoiding their destruction is a very helpful impact minimization measure. To see when birds are most likely to occur and be breeding in your project area, view the Probability of Presence Summary. [Additional measures](#) or [permits](#) may be advisable depending on the type of activity you are conducting and the type of infrastructure or bird species present on your project site.

What does IPaC use to generate the list of migratory birds that potentially occur in my specified location?

The Migratory Bird Resource List is comprised of USFWS [Birds of Conservation Concern \(BCC\)](#) and other species that may warrant special attention in your project location.

The migratory bird list generated for your project is derived from data provided by the [Avian Knowledge Network \(AKN\)](#). The AKN data is based on a growing collection of [survey, banding, and citizen science datasets](#) and is queried and filtered to return a list of those birds reported as occurring in the 10km grid cell(s) which your project intersects, and that have been identified as warranting special attention because they are a BCC species in that area, an eagle ([Eagle Act](#) requirements may apply), or a species that has a particular vulnerability to offshore activities or development.

Again, the Migratory Bird Resource list includes only a subset of birds that may occur in your project area. It is not representative of all birds that may occur in your project area. To get a list of all birds potentially present in your project area, please visit the [Rapid Avian Information Locator \(RAIL\) Tool](#).

What does IPaC use to generate the probability of presence graphs for the migratory birds potentially occurring in my specified location?

The probability of presence graphs associated with your migratory bird list are based on data provided by the [Avian Knowledge Network \(AKN\)](#). This data is derived from a growing collection of [survey, banding, and citizen science datasets](#).

Probability of presence data is continuously being updated as new and better information becomes available. To learn more about how the probability of presence graphs are produced and how to interpret them, go the Probability of Presence Summary and then click on the "Tell me about these graphs" link.

How do I know if a bird is breeding, wintering or migrating in my area?

To see what part of a particular bird's range your project area falls within (i.e. breeding, wintering, migrating or year-round), you may query your location using the [RAIL Tool](#) and look at the range maps provided for birds in your area at the bottom of the profiles provided for each bird in your results. If a bird on your migratory bird species list has a breeding season associated with it, if that bird does occur in your project area, there may be nests present at some point within the timeframe specified. If "Breeds elsewhere" is indicated, then the bird likely does not breed in your project area.

What are the levels of concern for migratory birds?

Migratory birds delivered through IPaC fall into the following distinct categories of concern:

1. "BCC Rangewide" birds are [Birds of Conservation Concern](#) (BCC) that are of concern throughout their range anywhere within the USA (including Hawaii, the Pacific Islands, Puerto Rico, and the Virgin Islands);
2. "BCC - BCR" birds are BCCs that are of concern only in particular Bird Conservation Regions (BCRs) in the continental USA; and
3. "Non-BCC - Vulnerable" birds are not BCC species in your project area, but appear on your list either because of the [Eagle Act](#) requirements (for eagles) or (for non-eagles) potential susceptibilities in offshore areas from certain types of development or activities (e.g. offshore energy development or longline fishing).

Although it is important to try to avoid and minimize impacts to all birds, efforts should be made, in particular, to avoid and minimize impacts to the birds on this list, especially eagles and BCC species of rangewide concern. For more information on conservation measures you can implement to help avoid and minimize migratory bird impacts and requirements for eagles, please see the FAQs for these topics.

Details about birds that are potentially affected by offshore projects

For additional details about the relative occurrence and abundance of both individual bird species and groups of bird species within your project area off the Atlantic Coast, please visit the [Northeast Ocean Data Portal](#). The Portal also offers data and information about other taxa besides birds that may be helpful to you in your project review. Alternately, you may download the bird model results files underlying the portal maps through the [NOAA NCCOS Integrative Statistical Modeling and Predictive Mapping of Marine Bird Distributions and Abundance on the Atlantic Outer Continental Shelf](#) project webpage.

Bird tracking data can also provide additional details about occurrence and habitat use throughout the year, including migration. Models relying on survey data may not include this information. For additional information on marine bird tracking data, see the [Diving Bird Study](#) and the [nanotag studies](#) or contact [Caleb Spiegel](#) or [Pam Loring](#).

What if I have eagles on my list?

If your project has the potential to disturb or kill eagles, you may need to [obtain a permit](#) to avoid violating the Eagle Act should such impacts occur.

Proper Interpretation and Use of Your Migratory Bird Report

The migratory bird list generated is not a list of all birds in your project area, only a subset of birds of priority concern. To learn more about how your list is generated, and see options for identifying what other birds may be in your project area, please see the FAQ "What does IPaC use to generate the migratory birds potentially occurring in my specified location". Please be aware this report provides the "probability of presence" of birds within the 10 km grid cell(s) that overlap your project; not your exact project footprint. On the graphs provided, please also look carefully at the survey effort (indicated by the black vertical bar) and for the existence of the "no data" indicator (a red horizontal bar). A high survey effort is the key component. If the survey effort is high, then the probability of presence score can be viewed as more dependable. In contrast, a low survey effort bar or no data bar means a lack of data and, therefore, a lack of

certainty about presence of the species. This list is not perfect; it is simply a starting point for identifying what birds of concern have the potential to be in your project area, when they might be there, and if they might be breeding (which means nests might be present). The list helps you know what to look for to confirm presence, and helps guide you in knowing when to implement conservation measures to avoid or minimize potential impacts from your project activities, should presence be confirmed. To learn more about conservation measures, visit the FAQ "Tell me about conservation measures I can implement to avoid or minimize impacts to migratory birds" at the bottom of your migratory bird trust resources page.

WETLANDS

Impacts to [NWI wetlands](#) and other aquatic habitats may be subject to regulation under Section 404 of the Clean Water Act, or other State/Federal statutes.

For more information please contact the Regulatory Program of the local [U.S. Army Corps of Engineers District](#).

Please note that the NWI data being shown may be out of date. We are currently working to update our NWI data set. We recommend you verify these results with a site visit to determine the actual extent of wetlands on site.

ESTUARINE AND MARINE DEEPWATER

- [E1UBL6](#)
- [E1UBL](#)

RIVERINE

- [R1UBV](#)
-

IPAC USER CONTACT INFORMATION

Agency: TRC

Name: Sophia Mottola

Address: 10 Hemingway Drive, 2nd Floor

City: East Providence

State: RI

Zip: 02915

Email: smottola@trccompanies.com

Phone: 4013301210



404 Wyman Street, Ste. 375
Waltham, MA 02451

T 781.419.7696
TRCcompanies.com

May 16, 2023

NY Natural Heritage Program – Information Services
NYS DEC
625 Broadway, 5th Floor
Albany, NY 12233-4757

Re: *Champlain Hudson Power Express (CHPE) Project
Hudson River Marine Segment Pre-Lay Mattressing*

Dear Sir or Madam,

Champlain Hudson Power Express, LLC (CHPE) is proposing to construct the Champlain Hudson Power Express Project (Project), an approximately 330-mile submarine and terrestrial High Voltage Direct Current (HVDC) transmission project that will connect clean power generated in Canada with New York City. As part of this Project, CHPE is proposing to install concrete mattresses along the bottom of the Hudson River at locations where the proposed cable intersects existing co-located infrastructure, to provide protection to the existing utilities and the transmission cables.

The Hudson River Pre-Lay Mattressing Project will facilitate utility protection of the submarine cable route within the Hudson River (Figure 1). The first segment, referred to as the Cementon-Stony Point Hudson Marine Segment, is approximately 67.6-miles long and begins in the Hamlet of Cementon, Greene County, New York and ends in the Town of Stony Point, Rockland County, New York. The second segment, referred to as the Congers-Harlem Hudson Marine Segment, is approximately 21.7-miles long and begins in the Hamlet of Congers, Rockland County, New York and ends at the mouth of the Harlem River.

The individual mattresses that will be used to provide site-specific utility crossing protection will be 8 feet wide by 20 feet long and 12 inches thick. Multiple mattresses will be installed at each location as appropriate to provide sufficient protection.

For the Hudson River pre-lay mattresses, the Tomkins Cove laydown yard will be dedicated to mattress production and distribution needed for the pre-lay mattressing work. Mattresses and equipment will be mobilized from Tomkins Cove to the project site.

On behalf of CHPE, TRC Environmental Corporation (TRC) respectfully requests information regarding the occurrence and distribution of state- and federally listed endangered and threatened species and their habitats occurring within or immediately adjacent to the Project areas. A shapefile of the Project areas is attached for review purposes. *Please note that CHPE's subcontractor Kiewit has submitted similar requests for terrestrial segments of the project which do not include the pre-lay mattressing work described herein. Additionally, please note that TRC has also submitted similar requests for transitional land-to-water HDD project segments which do not include the pre-lay mattressing work described herein. TRC recently submitted a request for Lake Champlain including pre-lay mattressing and this new request is submitted to address the pre-lay Mattressing work proposed in the Hudson River.*

The requested information is necessary to prepare the Environmental Management and Construction Plan for the Project in conformance with the requirements of the New York State Endangered Species Act and its implementing regulations (6 NYCRR Part 182), the Federal Coastal Zone Management Act,

the New York State Coastal Zone Management Program, and regulations promulgated under the Waterfront Revitalization and Coastal Resources Act (19 NYCRR Part 600).

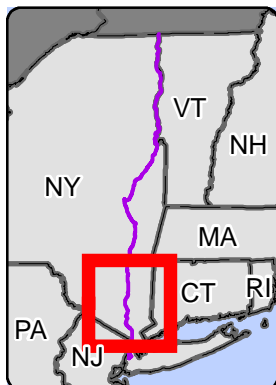
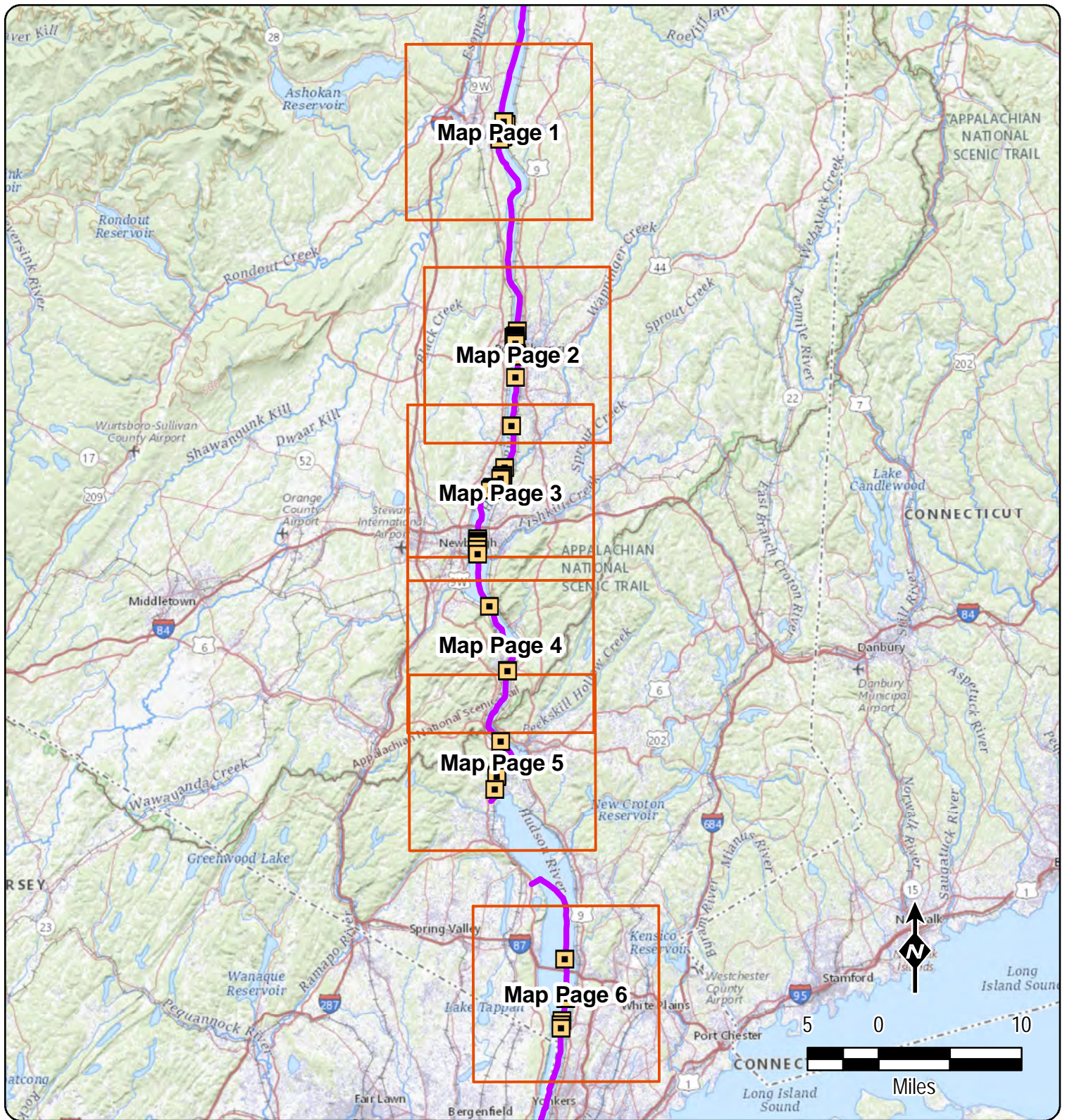
Please do not hesitate to contact me at (401) 330-1210 with any questions. Thank you in advance for your assistance.

Sincerely,
TRC Environmental Corporation

Sophia Mottola

Sophia Mottola
Environmental Scientist

Attachment 1 – Pre-Lay Mattressing Location Figure

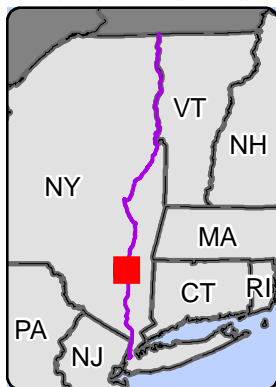
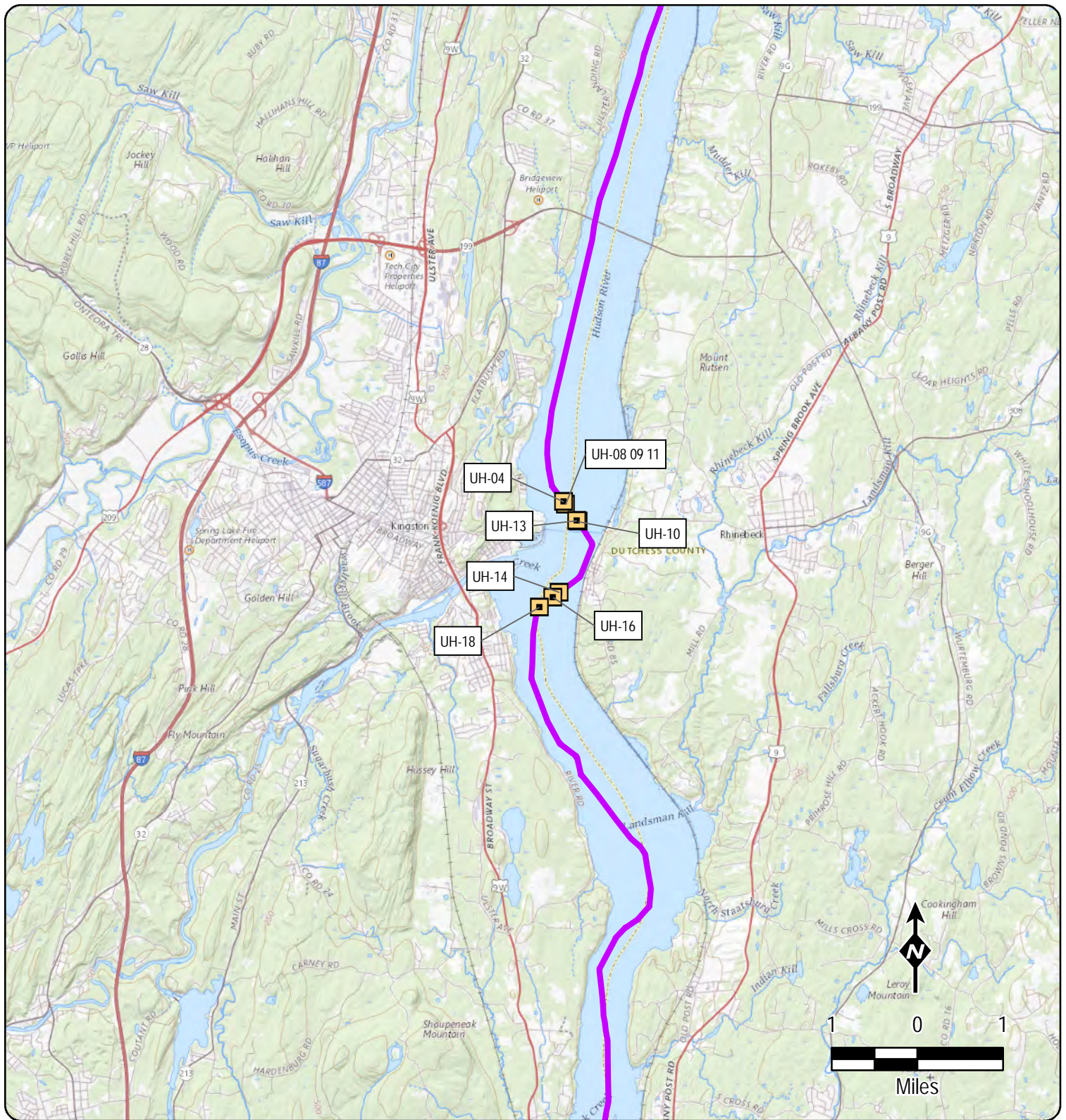


- Pre-Lay Concrete Mattress Protection Location
- Route
- Map Index



CHAMPLAIN HUDSON POWER EXPRESS
Hudson River Pre-Lay
Mattress Utility Protection EM&CP
Overview
Figure 1

Created: 5/15/2023

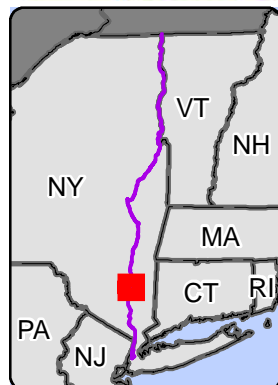
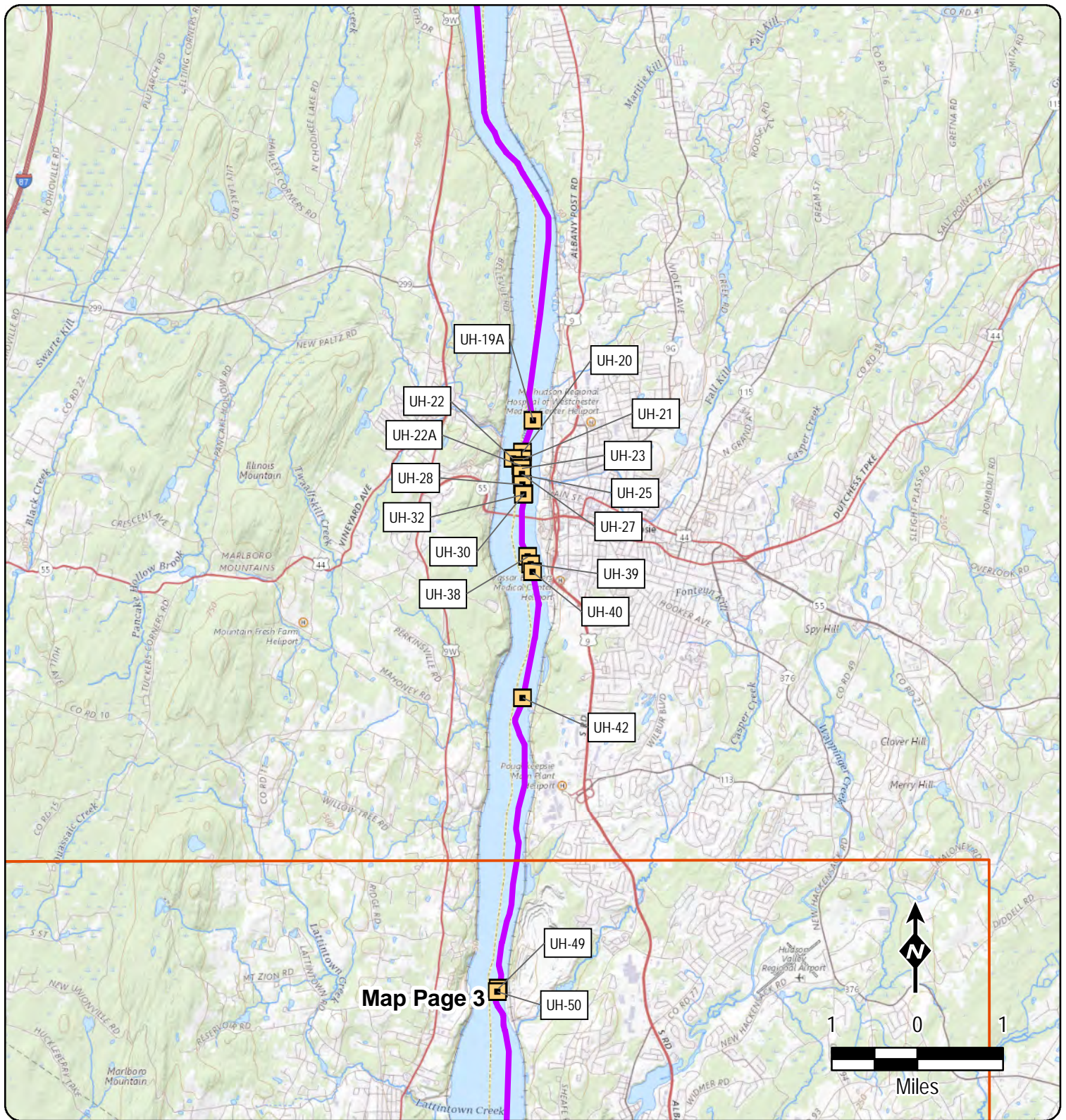


- Pre-Lay Concrete Mattress Protection Location
- Route



CHAMPLAIN HUDSON POWER EXPRESS
Hudson River Pre-Lay
Mattress Utility Protection EM&CP
Figure 1 - Page 1

Created: 5/15/2023

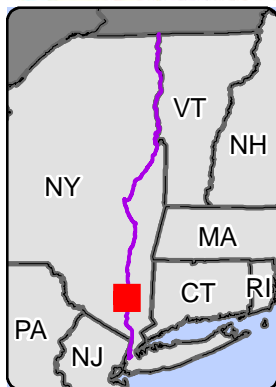
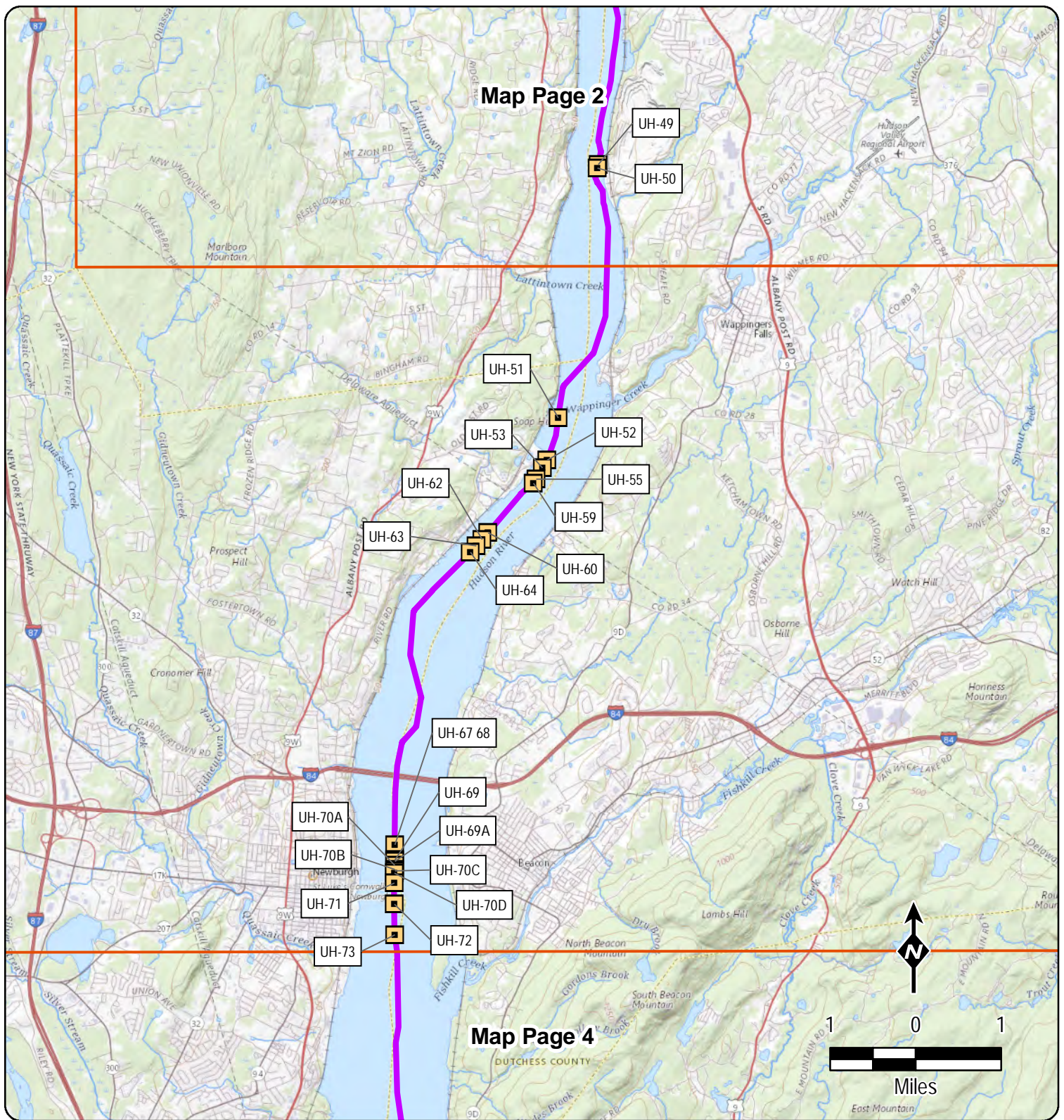


- Pre-Lay Concrete Mattress Protection Location
- Route
- Map Index



CHAMPLAIN HUDSON POWER EXPRESS
Hudson River Pre-Lay
Mattress Utility Protection EM&CP
Figure 1 - Page 2

Created: 5/15/2023

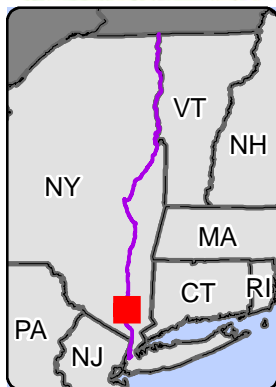
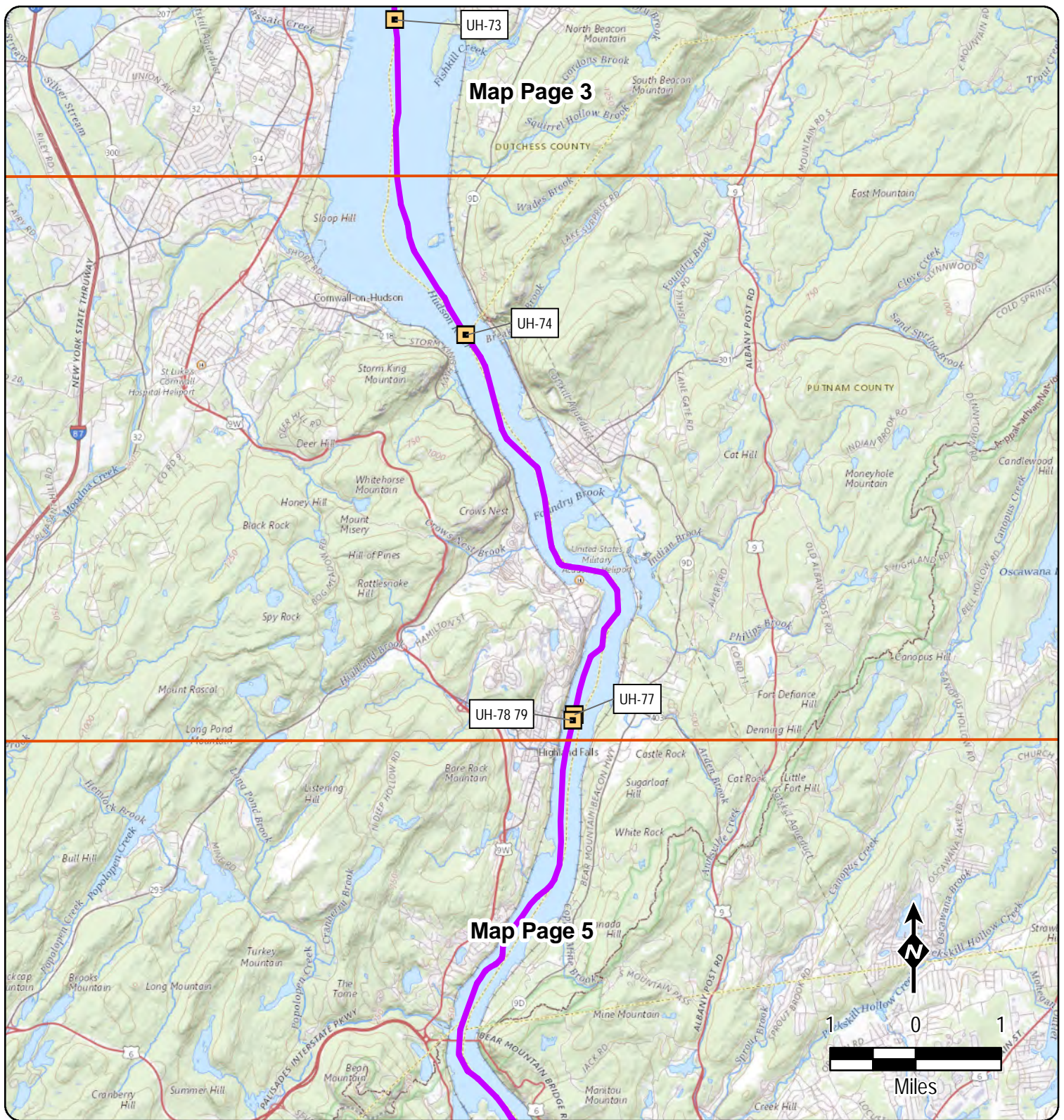


- Pre-Lay Concrete Mattress Protection Location
- Route
- Map Index



CHAMPLAIN HUDSON POWER EXPRESS
Hudson River Pre-Lay
Mattress Utility Protection EM&CP
Figure 1 - Page 3

Created: 5/15/2023

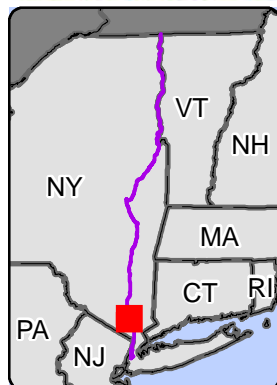
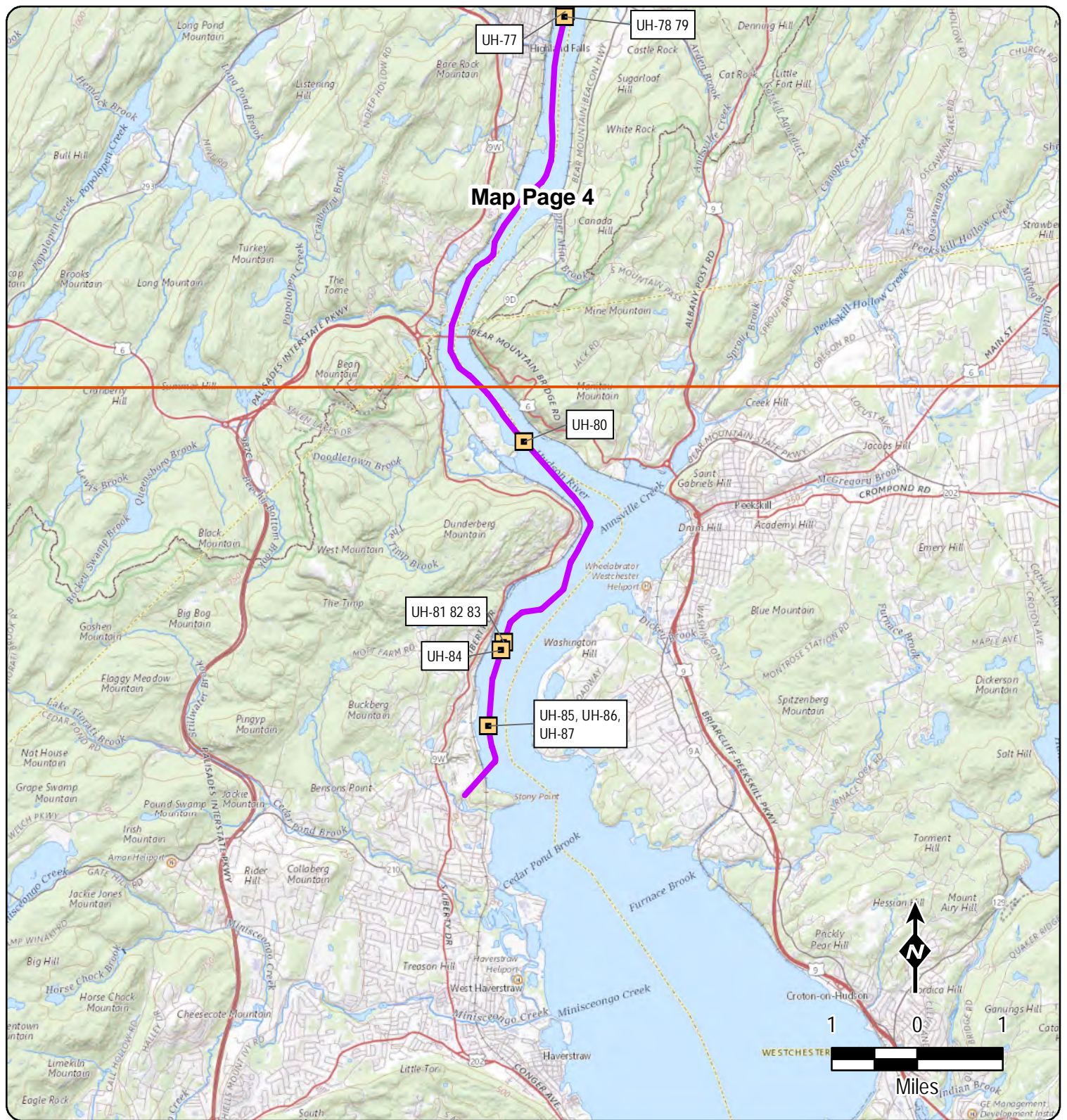


- Pre-Lay Concrete Mattress Protection Location
- Route
- Map Index



CHAMPLAIN HUDSON POWER EXPRESS
Hudson River Pre-Lay
Mattress Utility Protection EM&CP
Figure 1 - Page 4

Created: 5/15/2023

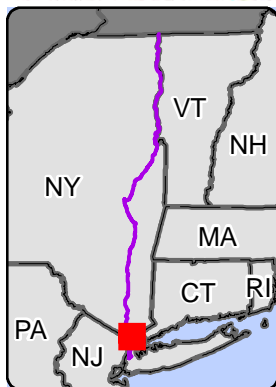
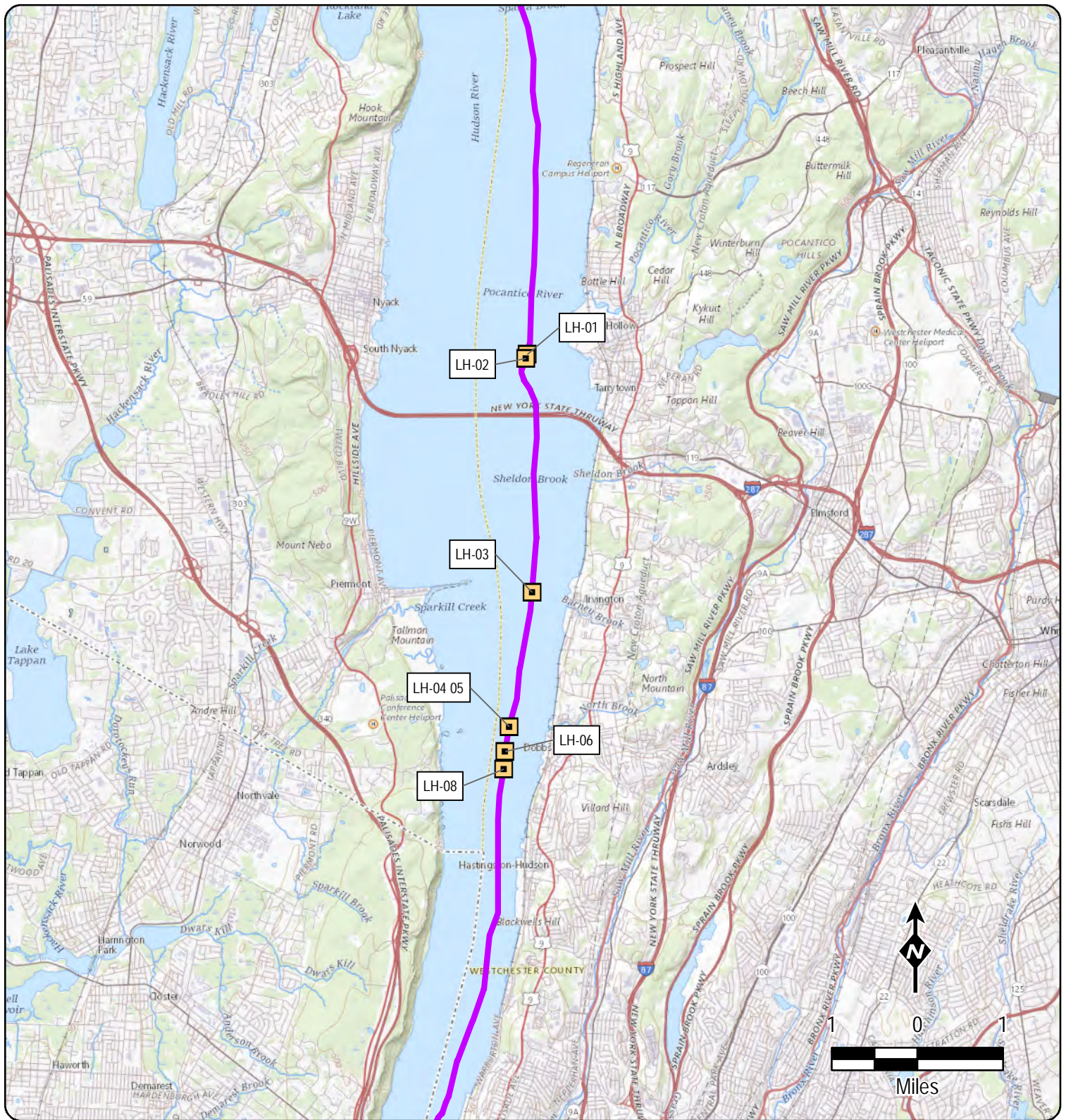


- Pre-Lay Concrete Mattress Protection Location
- Route
- Map Index



CHAMPLAIN HUDSON POWER EXPRESS
Hudson River Pre-Lay
Mattress Utility Protection EM&CP
Figure 1 - Page 5

Created: 5/15/2023



- Pre-Lay Concrete Mattress Protection Location
- Route



CHAMPLAIN HUDSON POWER EXPRESS
Hudson River Pre-Lay
Mattress Utility Protection EM&CP
Figure 1 - Page 6

Created: 5/15/2023

NEW YORK STATE DEPARTMENT OF ENVIRONMENTAL CONSERVATION

Division of Fish and Wildlife, New York Natural Heritage Program
625 Broadway, Fifth Floor, Albany, NY 12233-4757
P: (518) 402-8935 | F: (518) 402-8925
www.dec.ny.gov

July 10, 2023

Sophia Mottola
TRC
10 Hemingway Drive, 2nd Floor
East Providence, RI 02915

Re: Champlain Hudson Power Express (CHPE) Project -- Hudson River Marine Segment Pre-Lay Mattressing
County: Westchester, Rockland, Putnam, Orange, Ulster, Dutchess

Dear Sophia Mottola:

In response to your recent request, we have reviewed the New York Natural Heritage Program database with respect to the above project.

Enclosed is a spreadsheet listing rare or state-listed animals and plants, and significant natural communities that our database indicates occur in the vicinity of the mattress locations.

For most sites, comprehensive field surveys have not been conducted; the enclosed report only includes records from our database. We cannot provide a definitive statement as to the presence or absence of all rare or state-listed species or significant natural communities. Depending on the nature of the project and the conditions at the project site, further information from on-site surveys or other sources may be required to fully assess impacts on biological resources.

The presence of the plants and animals identified in the enclosed report may result in this project requiring additional review or permit conditions. For further guidance, and for information regarding other permits that may be required under state law for regulated areas or activities (e.g., regulated wetlands), please contact the NYS DEC.

Sincerely,



Nicholas Conrad
Information Resources Coordinator
New York Natural Heritage Program



The following list includes animals that are listed by NYS as Endangered, Threatened, or Special Concern; and/or that are federally listed.

The mattress locations that are at or in the vicinity of documented locations of each species are listed.

Note that Shortnose sturgeon, Atlantic sturgeon, and wintering bald eagles have been documented directly at all or many of the mattress pad locations.

CHPE_Mattress_Location_ID	COMMON_NAME	SCIENTIFIC_NAME	GROUP_NAME	NY_LISTED	US_LISTED	S_RANK	S_RANK_DESCRIPTION
ALL LOCATIONS	Shortnose Sturgeon	<i>Acipenser brevirostrum</i>	Fish	Endangered	Endangered	S1	Critically Imperiled
ALL LOCATIONS	Atlantic Sturgeon	<i>Acipenser oxyrinchus</i>	Fish		Endangered	S1	Critically Imperiled
UH: 04; 08, 09, 11; 10; 13; 19A; 20; 21; 22; 22A; 23; 25; 27; 28; 30; 32; 38; 39; 40; 42; 51; 52; 53; 55; 59; 60; 62; 63; 64; 67, 68; 69; 69A; 70A; 70B; 70C; 70D; 71; 72; 73; 74; 81, 82, 83; 84; 85, 86, 87	Bald Eagle -- nesting	<i>Haliaeetus leucocephalus</i>	Birds	Threatened		S2S3B,S2N	Imperiled
UH: 51; 52; 53; 55; 59; 80; 81, 82, 83; 84; 85, 86, 87	Bald Eagle -- wintering	<i>Haliaeetus leucocephalus</i>	Birds	Threatened		S2S3B,S2N	Imperiled
UH: 74	Golden Eagle -- wintering	<i>Aquila chrysaetos</i>	Birds	Endangered		SHB,S1N	Critically Imperiled
UH: 25; 27; 28; 30; 32; 38; 74	Peregrine Falcon -- nesting	<i>Falco peregrinus</i>	Birds	Endangered		S3B	Vulnerable
UH: 80	Least Bittern -- nesting	<i>Ixobrychus exilis</i>	Birds	Threatened		S3B	Vulnerable
UH: 04; 08, 09, 11; 10; 13; 14; 16; 18; 77; 78, 79; 80; 81, 82, 83; 84	Northern Long-eared Bat -- hibernacula	<i>Myotis septentrionalis</i>	Mammals	Endangered	Endangered	S1	Critically Imperiled
UH: 51; 60; 62; 63; 64	Northern Long-eared Bat -- breeding colony	<i>Myotis septentrionalis</i>	Mammals	Endangered	Endangered	S1	Critically Imperiled
UH: 14; 16; 18; 51; 52; 55; 59; 60; 62; 63; 64	Indiana Bat -- breeding colony	<i>Myotis sodalis</i>	Mammals	Endangered	Endangered	S1	Critically Imperiled
UH: 74; 80; 81, 82, 83; 84	Timber Rattlesnake	<i>Crotalus horridus</i>	Reptiles	Threatened		S3	Vulnerable
UH: 74	Eastern Wormsnake	<i>Carphophis amoenus</i>	Reptiles	Special Concern		S2	Imperiled
UH: 74; 80	Fence Lizard	<i>Sceloporus undulatus</i>	Reptiles	Threatened		S1	Critically Imperiled

The following list includes rare plants, significant natural communities, and significant animal concentration areas that have been documented at sites within 0.5 mile of mattress locations.

The mattress locations that are in the vicinity of each site are listed.

CHPE_Mattress_Location_ID	COMMONNAME	SCIEN_NAME	GROUP_NAME	LAST_DATE	NY_LISTED	S_RANK	S_RANK_DSC
Iona Island Marshes, Rockland County							
UH: 80	New England Bulrush	<i>Bolboschoenus novae-angliae</i>	Plants	2010-09-01	Endangered	S1	Critically Imperiled
UH: 80	Terrestrial Water Starwort	<i>Callitriche terrestris</i>	Plants	1998-06-17	Threatened	S2S3	Imperiled
UH: 80	Water Pigmyweed	<i>Crassula aquatica</i>	Plants	2003-08-16	Endangered	S1	Critically Imperiled
UH: 80	Yellow Flat Sedge	<i>Cyperus flavescens</i>	Plants	1993-09-21	Endangered	S1	Critically Imperiled
UH: 80	Spongy-leaved Arrowhead	<i>Sagittaria montevidensis</i> ssp. <i>spongiosa</i>	Plants	2010-09-01	Threatened	S2	Imperiled
UH: 80	Annual Saltmarsh Aster	<i>Symphyotrichum subulatum</i> var. <i>subulatum</i>	Plants	2010-09-01	Threatened	S2S3	Imperiled
UH: 80	Brackish Intertidal Mudflats		Wetland/Aquatic Communities			S1	Critically Imperiled
UH: 80	Brackish Tidal Marsh		Wetland/Aquatic Communities			S1	Critically Imperiled
Hudson River Shore at base of Dunderberg Mountain, Rockland County							
UH: 80	Single-glumed Spike Rush	<i>Eleocharis uniglumis</i>	Plants	2003-09-04	Threatened	S2	Imperiled
UH: 80	Terrestrial Water Starwort	<i>Callitriche terrestris</i>	Plants	1993-06-25	Threatened	S2S3	Imperiled
Piermont Marsh, Rockland County							
LH: 04, 05; 06; 08	Brackish Subtidal Aquatic Bed		Wetland/Aquatic Communities			S3S4	Vulnerable
LH: 04, 05; 06	Anadromous Fish Concentration Area		Animal Assemblages			S3	Vulnerable
Rondout Creek Mouth Wetlands, Ulster County							
UH: 14; 16; 18	Estuary Beggar Ticks	<i>Bidens bidentoides</i>	Plants	1993-06-08	Rare	S3	Vulnerable
UH: 04; 08, 09, 11; 10; 13	Heart-leaved Plantain	<i>Plantago cordata</i>	Plants	1985-08-10	Rare	S3	Vulnerable
UH: 04; 08, 09, 11; 10; 13; 14; 16; 18	Freshwater Tidal Marsh		Wetland/Aquatic Communities			S2	Imperiled
UH: 14; 16; 18	Freshwater Intertidal Shore		Wetland/Aquatic Communities			S2	Imperiled
UH: 14; 16; 18	Anadromous Fish Concentration Area		Animal Assemblages			S3	Vulnerable
UH: 18	Waterfowl Winter Concentration Area		Animal Assemblages			S3S4N	Vulnerable
Hudson River Shore west of UH-04, Ulster County							
UH: 04; 08, 09, 11; 10; 13	Provancher's Fleabane	<i>Erigeron philadelphicus</i> var. <i>provancheri</i>	Plants	2012-09-21	Threatened	S2	Imperiled
UH: 04; 08, 09, 11	Davis' Sedge	<i>Carex davisii</i>	Plants	2004-06-16	Threatened	S2	Imperiled
The Flats, Ulster County							
UH: 04; 08, 09, 11	Anadromous Fish Concentration Area		Animal Assemblages			S3	Vulnerable
Wappingers Creek Mouth, Dutchess County							
UH: 51; 52; 53	Anadromous Fish Concentration Area		Animal Assemblages			S3	Vulnerable
Hudson River Mile 44-56, Orange, Putnam, Rockland, Westchester Counties							
74*; 77*; 78, 79*; 80*	Anadromous Fish Concentration Area		Animal Assemblages			S3	Vulnerable

* = These mattress locations are directly within a mapped Anadromous Fish Concentration Area.



404 Wyman Street, Ste. 375
Waltham, MA 02451

T 781.419.7696
TRCcompanies.com

July 31, 2023

NY Natural Heritage Program – Information Services
NYS DEC
625 Broadway, 5th Floor
Albany, NY 12233-4757

Re: *Champlain Hudson Power Express (CHPE) Project
Hudson River Marine Segment Pre-Lay Mattressing*

Dear Sir or Madam,

Champlain Hudson Power Express, LLC (CHPE) is proposing to construct the Champlain Hudson Power Express Project (Project), an approximately 330-mile submarine and terrestrial High Voltage Direct Current (HVDC) transmission project that will connect clean power generated in Canada with New York City. As part of this Project, CHPE is proposing to install concrete mattresses along the bottom of the Hudson River at locations where the proposed cable intersects existing co-located infrastructure, to provide protection to the existing utilities and the transmission cables.

The Hudson River Pre-Lay Mattressing Project will facilitate utility protection of the submarine cable route within the Hudson River (Figure 1). The first segment, referred to as the Cementon-Stony Point Hudson Marine Segment, is approximately 67.6-miles long and begins in the Hamlet of Cementon, Greene County, New York and ends in the Town of Stony Point, Rockland County, New York. The second segment, referred to as the Congers-Harlem Hudson Marine Segment, is approximately 21.7-miles long and begins in the Hamlet of Congers, Rockland County, New York and ends at the mouth of the Harlem River. A previous request was issued for this project, however since then, new locations have been added and/or removed from the scope of this request. There are two mattress locations that are still to be determined, at which point a supplemental request for review will be submitted.

The individual mattresses that will be used to provide site-specific utility crossing protection will be 8 feet wide by 20 feet long and 12 inches thick. Multiple mattresses will be installed at each location as appropriate to provide sufficient protection.

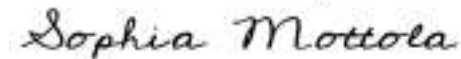
For the Hudson River pre-lay mattresses, the Tomkins Cove laydown yard will be dedicated to mattress production and distribution needed for the pre-lay mattressing work. Mattresses and equipment will be mobilized from Tomkins Cove to the project site.

On behalf of CHPE, TRC Environmental Corporation (TRC) respectfully requests information regarding the occurrence and distribution of state- and federally listed endangered and threatened species and their habitats occurring within or immediately adjacent to the Project areas. A shapefile of the Project areas is attached for review purposes. *Please note that CHPE's subcontractor Kiewit has submitted similar requests for terrestrial segments of the project which do not include the pre-lay mattressing work described herein. Additionally, please note that TRC has also submitted similar requests for transitional land-to-water HDD project segments which do not include the pre-lay mattressing work described herein. TRC recently submitted a request for Lake Champlain including pre-lay mattressing and this new request is submitted to address the pre-lay Mattressing work proposed in the Hudson River.*

The requested information is necessary to prepare the Environmental Management and Construction Plan for the Project in conformance with the requirements of the New York State Endangered Species Act and its implementing regulations (6 NYCRR Part 182), the Federal Coastal Zone Management Act, the New York State Coastal Zone Management Program, and regulations promulgated under the Waterfront Revitalization and Coastal Resources Act (19 NYCRR Part 600).

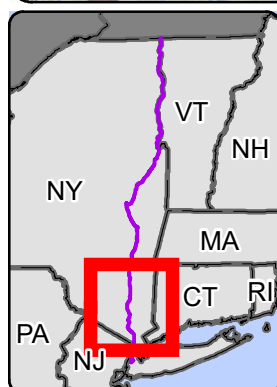
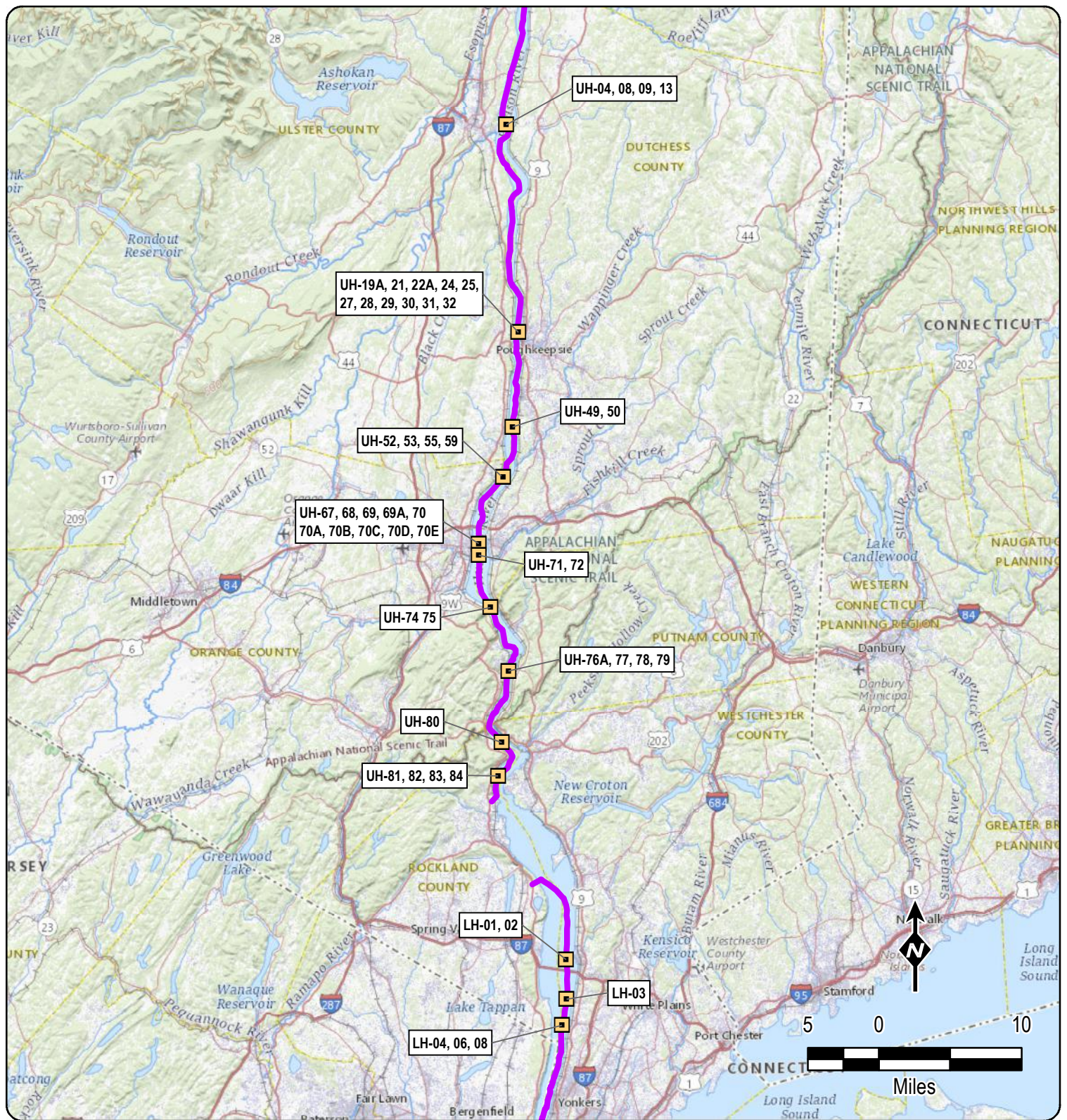
Please do not hesitate to contact me at (401) 330-1210 with any questions. Thank you in advance for your assistance.

Sincerely,
TRC Environmental Corporation

A handwritten signature in black ink that reads "Sophia Mottola". The script is cursive and fluid.

Sophia Mottola
Environmental Scientist

Attachment 1 – Pre-Lay Mattressing Location Figure



- Pre-Lay Concrete Mattress Protection Locations
- Route

*Exact location of UH-49A and LH-03A is not currently known; confirmed location of these and other pre-lay mattress installation locations will be provided once finalized.



CHAMPLAIN HUDSON POWER EXPRESS
Hudson River Pre-Lay
Mattress Utility Protection EM&CP
Overview
Figure 1

Created: 7/31/2023

August 01, 2023

NY Natural Heritage Program – Information Services
NYS DEC
625 Broadway, 5th Floor
Albany, NY 12233-4757

Re: *Champlain Hudson Power Express (CHPE) Project
Hudson River Marine Segment Pre-Lay Mattressing*

Dear Sir or Madam,

Champlain Hudson Power Express, LLC (CHPE) is proposing to construct the Champlain Hudson Power Express Project (Project), an approximately 330-mile submarine and terrestrial High Voltage Direct Current (HVDC) transmission project that will connect clean power generated in Canada with New York City. As part of this Project, CHPE is proposing to install concrete mattresses along the bottom of the Hudson River at locations where the proposed cable intersects existing co-located infrastructure, to provide protection to the existing utilities and the transmission cables.

The Hudson River Pre-Lay Mattressing portion of the Project will facilitate utility protection of the submarine cable route within the Hudson River (Figure 1). The first segment of the submarine cable route, referred to as the Cementon-Stony Point Hudson Marine Segment, is approximately 67.6-miles long and begins in the Hamlet of Cementon, Greene County, New York and ends in the Town of Stony Point, Rockland County, New York. The second segment of the submarine cable route, referred to as the Congers-Harlem Hudson Marine Segment, is approximately 21.7-miles long and begins in the Hamlet of Congers, Rockland County, New York and ends at the mouth of the Harlem River. Concrete mattresses will be pre-laid along the proposed submarine cable route at locations specified in Figure 1. The individual mattresses that will be used to provide site-specific utility crossing protection will be 8 feet wide by 20 feet long and 12 inches thick. Multiple mattresses will be installed at each location as appropriate to provide sufficient protection. For the Hudson River pre-lay mattresses, the Tomkins Cove laydown yard will be dedicated to mattress production and distribution needed for the pre-lay mattressing work. Mattresses and equipment will be mobilized from Tomkins Cove to the project site.

Two previous requests were issued for this portion of the Project (request 05/16/2023, with response received 07/10/2023, and request 07/31/2023), however since then, new locations have been added and/or removed from the scope of this request.

On behalf of CHPE, TRC respectfully requests information regarding the occurrence and distribution of state- and federally listed endangered and threatened species and their habitats occurring within or immediately adjacent to the Project areas. A shapefile of the Project areas is attached for review purposes. *Please note that CHPE's subcontractor Kiewit has submitted similar requests for terrestrial segments of the project which do not include the pre-lay mattressing work described herein. Additionally, please note that TRC has also submitted similar requests for transitional land-to-water HDD project segments which do not include the pre-lay mattressing work described herein. TRC recently submitted a request for Lake Champlain including pre-lay mattressing and this new request is submitted to address the pre-lay Mattressing work proposed in the Hudson River.*

The requested information is necessary to prepare the Environmental Management and Construction Plan for the Project in conformance with the requirements of the New York State Endangered Species Act and its implementing regulations (6 NYCRR Part 182), the Federal Coastal Zone Management Act, the New York State Coastal Zone Management Program, and regulations promulgated under the Waterfront Revitalization and Coastal Resources Act (19 NYCRR Part 600).

Please do not hesitate to contact me at (401) 330-1210 with any questions. Thank you in advance for your assistance.

Sincerely,
TRC Environmental Corporation

Sophia Mottola

Sophia Mottola
Environmental Scientist

Attachment 1 – Pre-Lay Mattressing Location Figure

