



Appendix B: Environmental Management and Construction Plan Filing Notices

NOTICE OF SUBMISSION OF ENVIRONMENTAL MANAGEMENT AND CONSTRUCTION PLAN FOR CHAMPLAIN HUDSON POWER EXPRESS

Please take notice that, on August 4, 2023, CHPE LLC and CHPE Properties, Inc. (collectively referred to as “CHPE”) intend to submit Environmental Management & Construction Plans (“EM&CPs”) for the Hudson River Pre-Lay Mattressing Segment of the proposed Champlain Hudson Power Express (“CHPE”) Project. This EM&CP includes installation of concrete articulated mattresses on the bed of the river to protect co-located submarine infrastructure (such as buried telecommunications, electrical or gas lines placed on or beneath the bed of the Hudson River) in preparation for future submarine cable installation. A second EM&CP Segment will be submitted later in 2023 which will detail the procedures to be implemented during installation of the submarine cable in the Hudson River.

On April 18, 2013, the NYS Public Service Commission (Commission) issued to CHPE a certificate of environmental compatibility and public need (Certificate), pursuant to Article VII of the Public Service Law (PSL), to construct and operate the CHPE Project. The Certificate requires that, prior to construction of any portion of the Project, CHPE submit an EM&CP for review and comment.

Details of the planned work locations, including an overview map, are available on the Project website at: <https://chpexpress.com/overview-of-public-documents/environmental-management-construction-plan/>. In general, construction activities for this Segment are anticipated to commence in fall 2023. Where possible, construction will generally occur during daylight hours, though some limited activities may extend to later hours as needed.

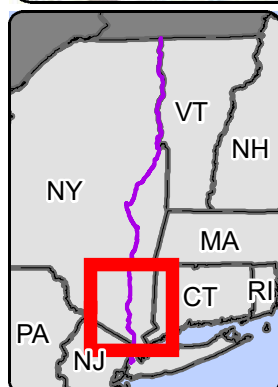
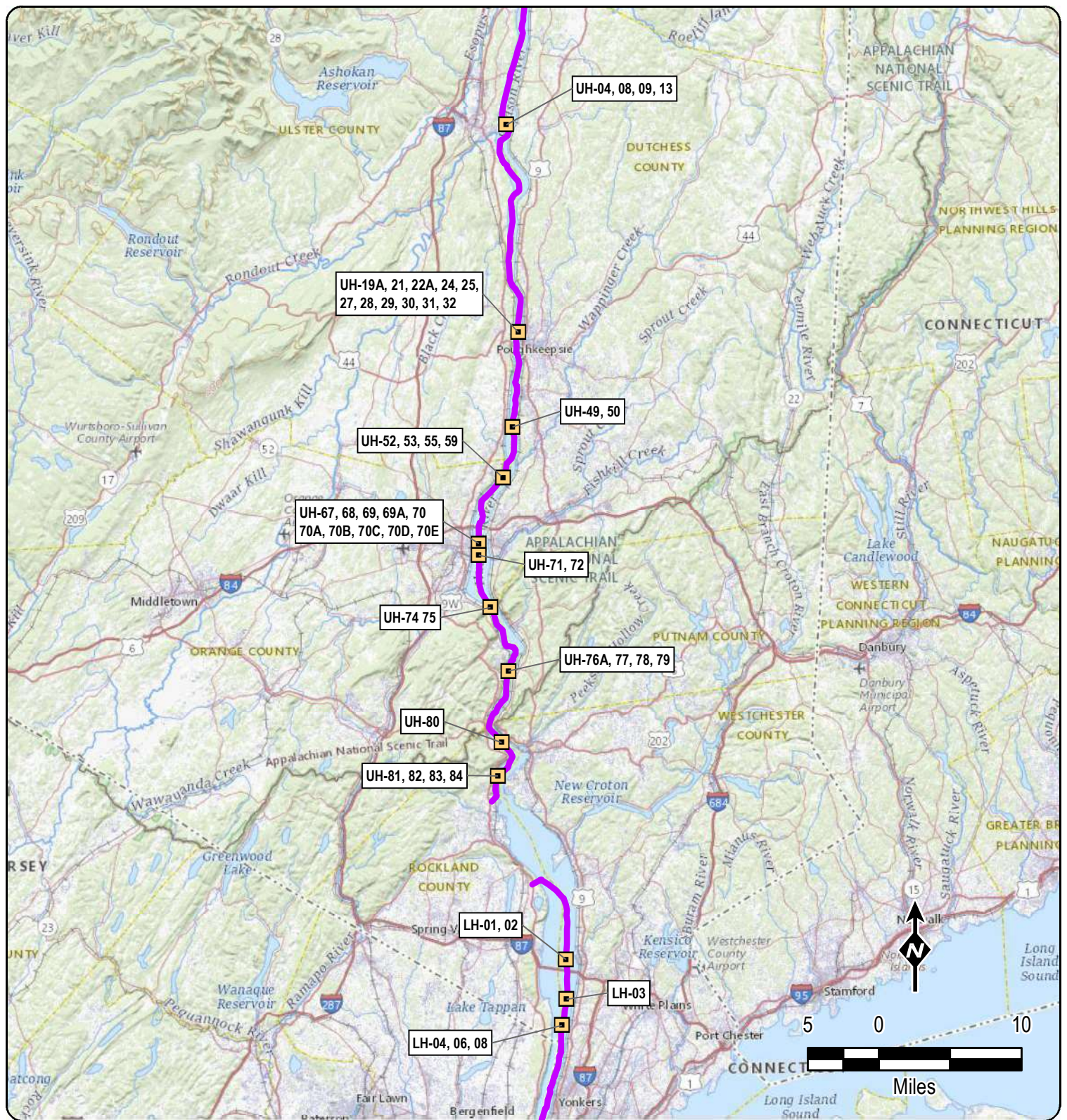
The EM&CP provides detailed information regarding how this Segment of the Project will be constructed, the specific locations of the proposed mattress installations, Construction Zones, and temporary work areas, as well as descriptions of work to be performed, plan and profile drawings depicting the Project, and protocols to be used during construction to protect the community and the environment, and to comply with the CHPE Certificate. The EM&CP must be reviewed and approved by the PSC before construction on this Segment can begin.


The full Commission docket for the Project can be accessed via the Commission’s website at: <http://documents.dps.ny.gov/public/MatterManagement/CaseMaster.aspx?MatterCaseNo=10-T-0139> and electronic copies of EM&CP documents also will be available on the Project website at <https://chpexpress.com/overview-of-public-documents/environmental-management-construction-plan/>. Paper copies of the Segment EM&CP submissions will be available for viewing at the following local document repositories: Kingston Library, 55 Franklin Street, Kingston, NY 12401; Adriance Memorial Library 93 Market Street, Poughkeepsie, NY 12601; Cornwall Public Library 395 Hudson St, Cornwall, NY 12518 and Greenburgh Public Library, 300 Tarrytown Rd, Elmsford, NY 10523.

Comments related to these proposed EM&CPs should be submitted to the Commission Secretary by email at secretary@dps.ny.gov or by mail to Michelle Phillips, Secretary, NYS Public

Service Commission, 3 Empire State Plaza, Albany, NY, 12223, within 30 days of the EM&CP segment's filing with the Commission. All comments should reference Case Number 10-T-0139.

CHPE has established a toll-free number for questions regarding the Project: 1-800-991-CHPE (2473). Questions or requests for further information can be directed to: publicoutreach@chpexpress.com or by mail to Molly Hollister, WSP USA, One Pennsylvania Plaza, New York, New York 10119.





CHAMPLAIN HUDSON POWER EXPRESS
Hudson River Pre-Lay
Mattress Utility Protection EM&CP
Overview
Figure 1

Created: 7/31/2023



c/o Transmission Developers
623 Fifth Avenue, 20th Floor
New York, New York 10022

Notice of Submission of Hudson River Pre-Lay Mattressing EM&CP For the Champlain Hudson Power Express Project

Dear Stakeholder,

On August 4, 2023, CHPE LLC and CHPE Properties, Inc. (collectively referred to as “CHPE”) intend to submit Environmental Management & Construction Plans (“EM&CPs”) for the Hudson River Pre-Lay Mattressing Segment of the proposed Champlain Hudson Power Express (“CHPE”) Project. This EM&CP includes installation of concrete articulated mattresses on the bed of the river to protect co-located submarine infrastructure (such as buried telecommunications, electrical or gas lines placed on or beneath the bed of the Hudson River) in preparation for future submarine cable installation. A second EM&CP Segment will be submitted later in 2023 which will detail the procedures to be implemented during installation of the submarine cable in the Hudson River.

The New York State Public Service Commission (“PSC”) issued a Certificate of Environmental Compatibility and Public Need (“Certificate”) to CHPE on April 18, 2013 to construct and operate the CHPE Project. Pursuant to that Certificate, CHPE is required to circulate notices to certain landowners, utility owners, municipalities and agencies near the proposed Segment locations indicating that the EM&CPs will be filed and providing links and contact information which stakeholders can use to obtain further information or to submit comments.

The EM&CP provides detailed information regarding how this Segment of the Project will be constructed, the specific locations of the proposed mattress installations, Construction Zones, and temporary work areas, as well as descriptions of work to be performed, plan and profile drawings depicting the Project, and protocols to be used during construction to protect the community and the environment, and to comply with the CHPE Certificate. The EM&CP must be reviewed and approved by the PSC before construction on this Segment can begin.

A general overview map of the proposed mattressing locations accompanies this notice. Further details of the planned work locations will be made available on the Project website at: <https://chpexpress.com/overview-of-public-documents/environmental-management-construction-plan/>. In general, construction activities for this Segment are anticipated to commence in fall 2023. Where possible, construction will generally occur during daylight hours, though some limited activities may extend to later hours as needed.

Contact Information and Document Repositories

CHPE has established a toll-free number for questions regarding the Project: 1-800-991-CHPE (2473). Questions or requests for further information can be directed to publicoutreach@chpexpress.com or by mail to Molly Hollister, WSP USA, One Pennsylvania Plaza, New York, New York 10119.



c/o Transmission Developers
623 Fifth Avenue, 20th Floor
New York, New York 10022

The EM&CP documents will be available on the PSC's website at <http://documents.dps.ny.gov/public/MatterManagement/CaseMaster.aspx?MatterCaseNo=10-T-0139> and on the Project website <https://chpexpress.com/overview-of-public-documents/environmental-management-construction-plan/> once they are filed.

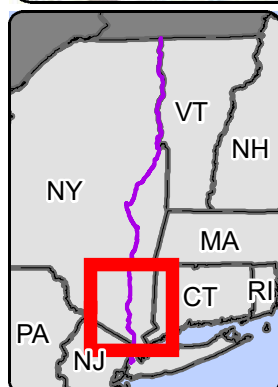
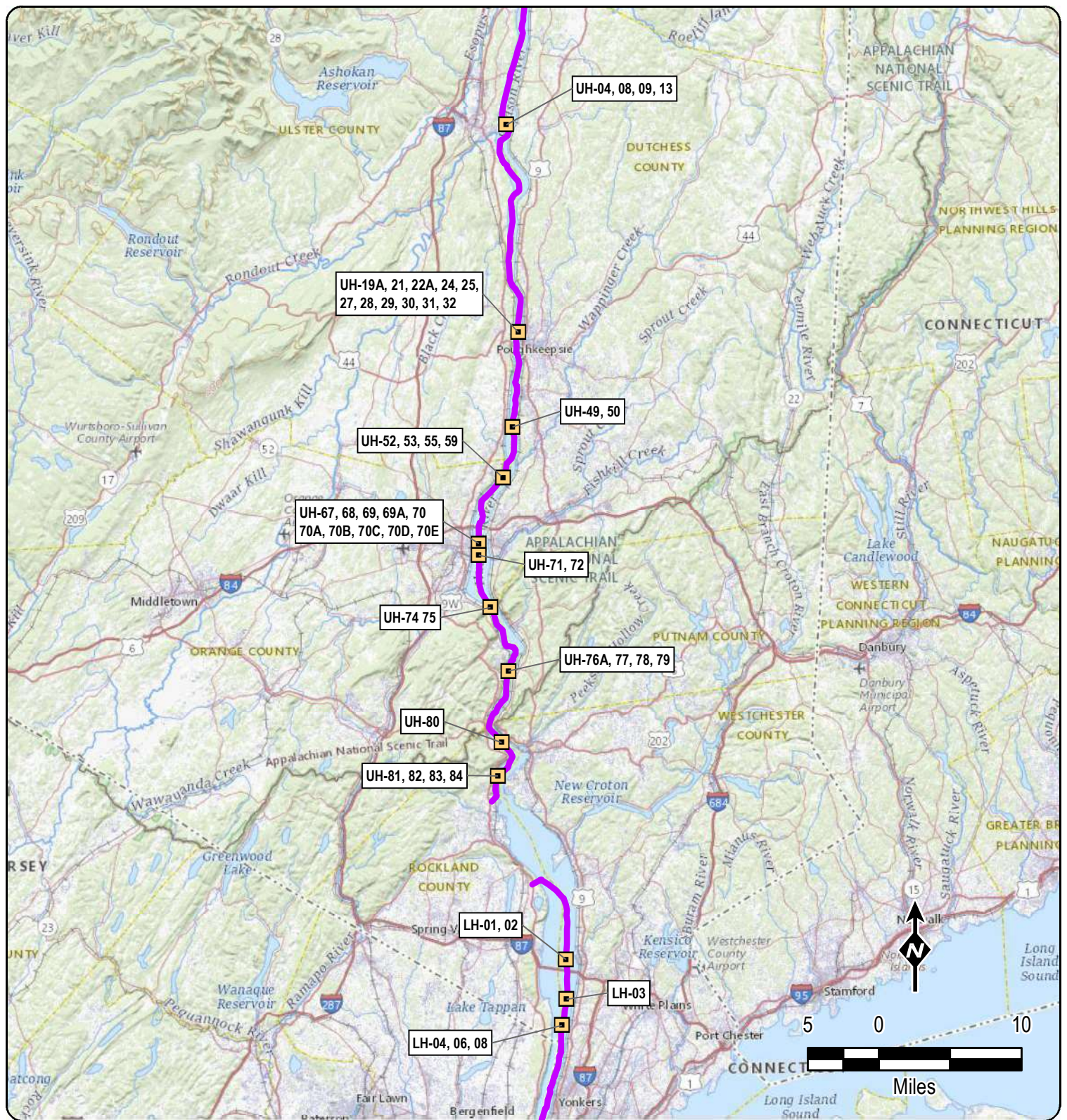
Paper copies of the Segment 4 and 5 EM&CP submissions will be available for viewing at the following local document repositories: Kingston Library, 55 Franklin Street, Kingston, NY 12401; Adriance Memorial Library 93 Market Street, Poughkeepsie, NY 12601; Cornwall Public Library 395 Hudson St, Cornwall, NY 12518 and Greenburgh Public Library, 300 Tarrytown Rd, Elmsford, NY 10523.


Filing Comments

Any person wishing to be heard by the Commission on any matter related to the proposed EM&CPs may file written comments with the Commission Secretary by email at secretary@dps.ny.gov or by mail to Michelle Phillips, Secretary, NYS Public Service Commission, 3 Empire State Plaza, Albany, NY, 12223, within 30 days of the EM&CP segment's filing with the Commission. All comments should reference Case Number 10-T-0139.

Yours truly,

Josh Bagnato
Vice President, Development





CHAMPLAIN HUDSON POWER EXPRESS
Hudson River Pre-Lay
Mattress Utility Protection EM&CP
Overview
Figure 1

Created: 7/31/2023