

## **Notice of the Start of Construction for Segments 6 and 7 of the Champlain Hudson Power Express Project**

Dear Stakeholder,

On or about December 18, 2023, CHPE LLC and CHPE Properties, Inc. (collectively referred to as “CHPE”) intend to begin site preparation and construction on Segments 6 and 7 of the proposed Champlain Hudson Power Express (“CHPE”) Project. These Segments include installation of approximately 19.8 miles of buried overland cable running from the Town of Milton (Saratoga County) through the Town of Rotterdam (Schenectady County), primarily along railroad and highway rights-of-way.

On April 18, 2013, the NYS Public Service Commission (Commission) issued to CHPE a certificate of environmental compatibility and public need (Certificate), pursuant to Article VII of the Public Service Law (PSL), to construct and operate the CHPE Project. Upon receipt of a Notice to Proceed with Construction letter sent by the New York State Department of Public Service’s Office of Electric, Gas and Water, CHPE will be authorized to commence construction activities for these Segments.

Facility construction falls under the jurisdiction of the Commission, which is responsible for enforcing compliance with environmental and construction conditions, and which may be contacted through Matthew Smith, Office of Electric, Gas and Water, New York State Department of Public Service, Three Empire State Plaza, Albany, NY 12223, via telephone at (518)474-8702 or email at [matthew.smith@dps.ny.gov](mailto:matthew.smith@dps.ny.gov).

### **Contact Information and Document Repositories**

CHPE has established a toll-free number for questions regarding the Project: 1-800-991-CHPE (2473). Questions or requests for further information can be directed to [publicoutreach@chpexpress.com](mailto:publicoutreach@chpexpress.com) or by mail to Molly Hollister, WSP USA, One Pennsylvania Plaza, New York, New York 10119.

Details of the planned work locations, including construction drawings showing in detail the Segment, are available on the Project website at: <https://chpexpress.com/overview-of-public-documents/environmental-management-construction-plan/>.

The full Commission docket for the Project can be accessed via the Commission’s website at: <http://documents.dps.ny.gov/public/MatterManagement/CaseMaster.aspx?MatterCaseNo=10-T-0139>.

Paper copies of the Segment 6 EM&CP documents are available for viewing at the following local document repositories: Ballston Community Library, 2 Lawmar Lane, Burnt Hills, NY 12027; Ballston Spa Library, 21 Milton Avenue, Ballston Spa, NY 12020. Paper copies of the Segment 7 EM&CP documents are available for viewing at the following local document



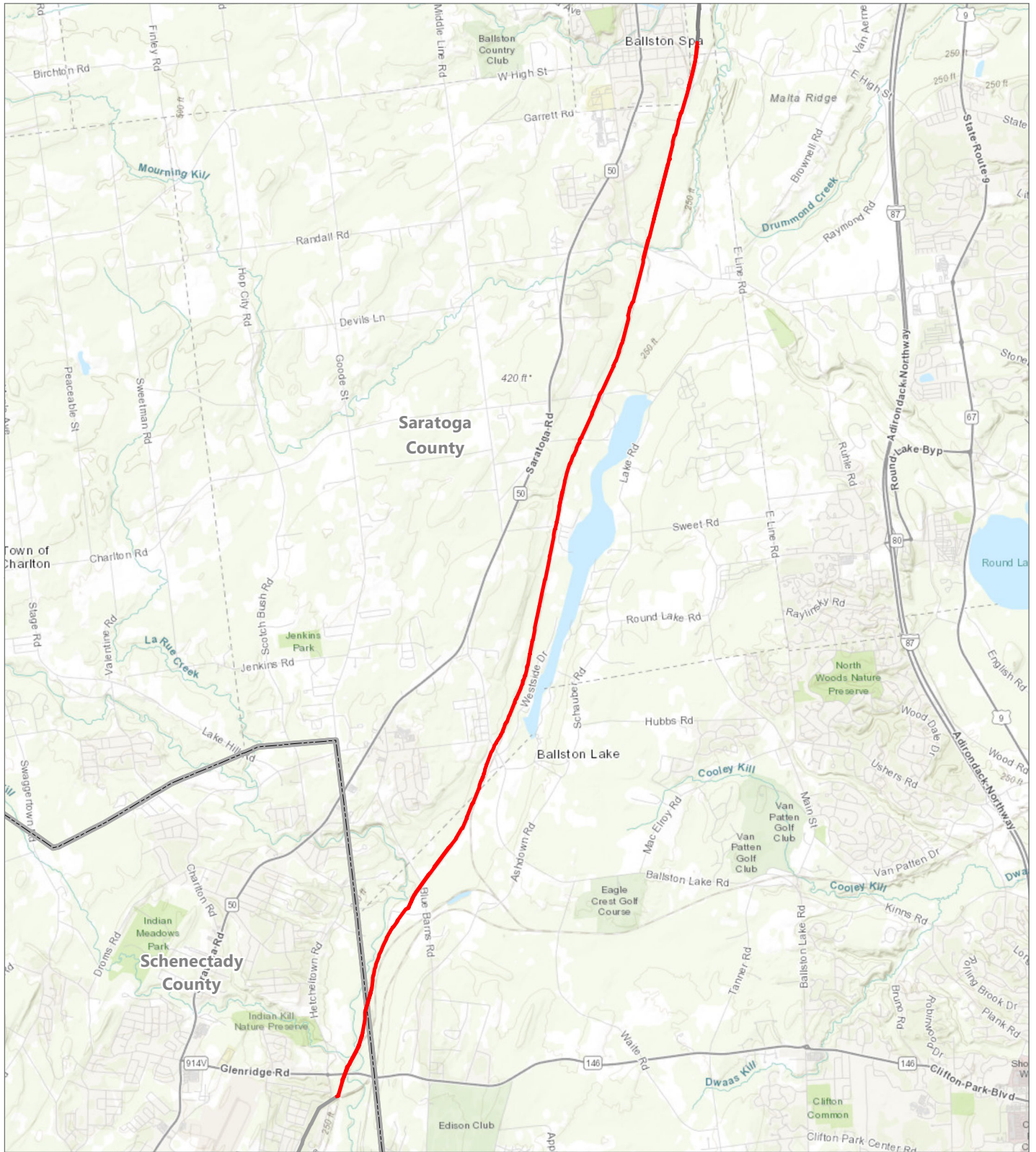
623 Fifth Avenue, 20th Floor  
New York, New York 10022

repositories: Rotterdam Library, 1100 N. Westcott Road, Schenectady, NY 12306; Glenville Library, Glenville Municipal Center, 20 Glenridge Road, Schenectady, NY 12302.

Yours truly,

Josh Bagnato  
Vice President, Development

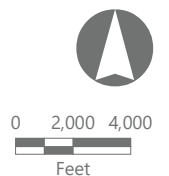
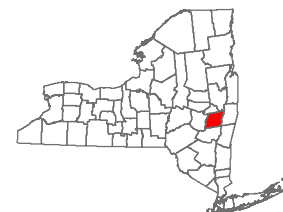
**Figure 1. Segment 6 Regional Project Location**



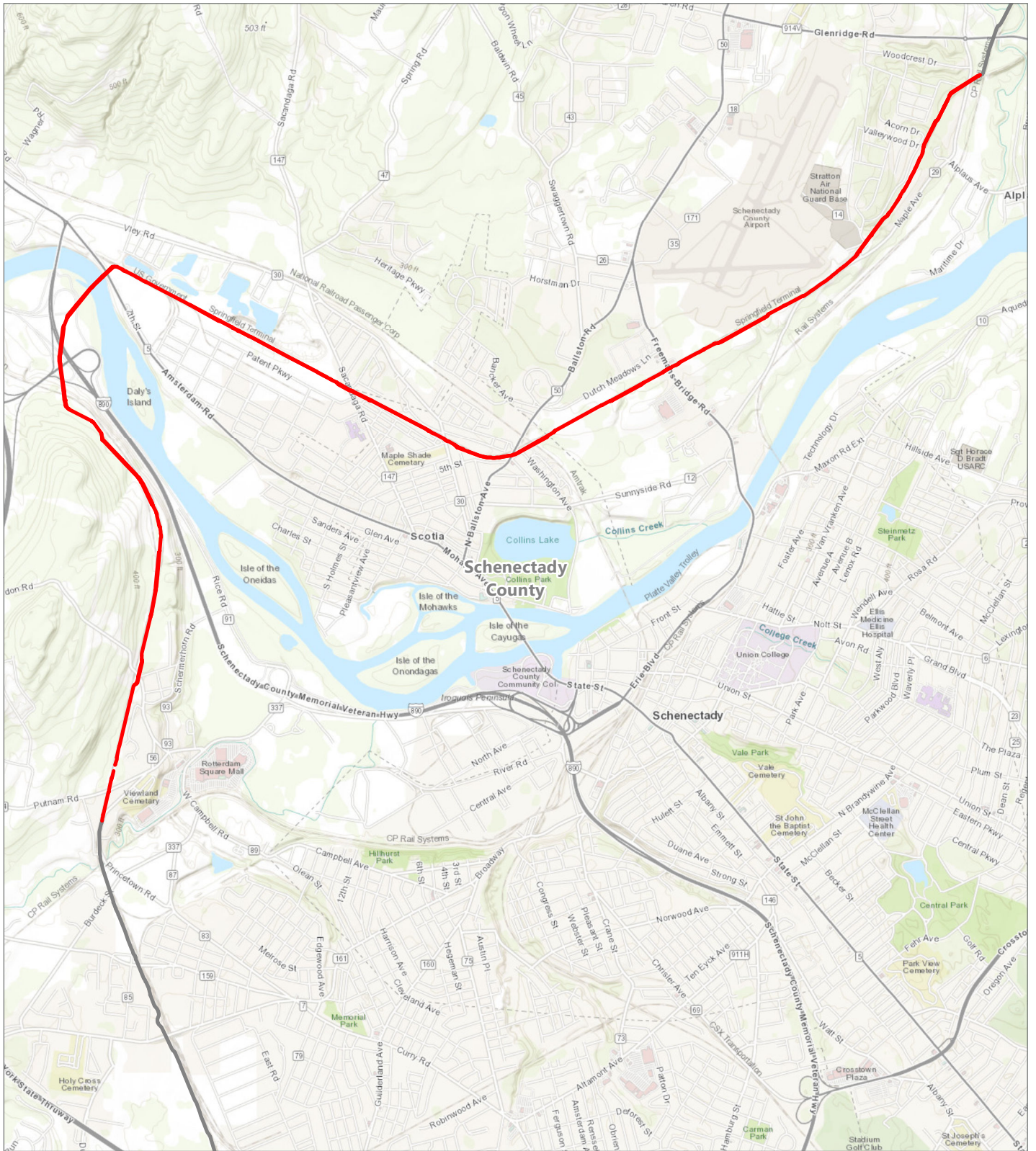
**CHPE EM&CP**

Albany County

- Segment 6
- Project Alignment



**Figure 1. Segment 7 Regional Project Location**



**CHPE EM&CP**

Schenectady County, New York

- Segment 7
- Project Alignment

