

**Champlain Hudson Power Express ("CHPE")
Environmental Management & Construction Plan
Notice of Major Change**

Project: Champlain Hudson Power Express

Segment: 7

Notice Number: 140

PSC Case: 10-T-0139

USACE Permit Number: NAN-2009-01089-M12

Location (Milepost, Town/County): Schenectady Preferred MP 2.4 to 2.9, Town of Glenville, Schenectady County, NY

Drawing References: Segment 7 (Package 4B) EM&CP Appendix C: G-001, G-011, G-013, G-014, G-015, C-109, C-110, C-111, C-304B, C-304C, C-305, C-305.1, C-305A, C-305A.1, C-405, C-406

Other Documents/References: None

Component(s) Impacted by Change: Segment 7 (Package 4B) EM&CP Appendix C and J

Description of Change:

This change involves a shift of the alignment outside of the deviation zone related to the previously approved deviations S7-P4B#7 and S7-P4B#8 in the Segment 7 (Package 4B) EM&CP and leading to a new deviation S7-P4B#7A. The change is the result of coordination between NYSDOT, NYSDEC, and Champlain Hudson Power Express. It involves a change of installation methodology from a trenched cable installation to a trenchless horizontal directional drill (HDD) method from approximately station 45128+00 to 45135+00 to cross Freemans Bride Road (NY State Route 911F). The crossing of Freemans Bridge Road is via a new HDD: HDD 64AA. This addresses NYSDOT concerns about trenching across Freemans Bride Road including traffic impacts from construction and the serviceability of the final restored state. HDD 64AA also avoids trenching and grading activities previously approved on the Ultimate, LLC. Parcel (former Kenco Chemical Corporation site) on which there are soil contamination remediation activities.

Implementing a trenchless crossing of Freemans Bridge Road while avoiding Lands N/F Ultimate LLC requires an alignment change crossing the CSX tracks and a new excursion on the north side of the tracks. A new access road and work area is required north of the tracks for the construction of HDD 64AA. This work area includes 0.06 acres of new temporary wetland impacts to Wetland JG. An update to EM&CP Table 9.2 included below shows updated wetland impact areas. Additionally, the alignment of the previously-approved HDD 64A from approximately station 45137 to 45146 has been altered to cross below the CSX tracks, tying this change into the previously-approved alignment. Overall, the altered portion of the alignment is from approximately station 45126 to station 45146.

This change eliminates previously-approved trenched conduit installation, temporary access road, and HDD work area on the south side of the CSX tracks from approximately station 45130 to 45140, referencing station numbers of that design ("ISSUED FOR CONSTRUCTION SUBMISSION", dated 07/28/2023). Approximately 0.64 acres of wetland impacts (wetlands C-PA-E and FA-XQ) associated with that temporary road and work area have been eliminated. An update to EM&CP Table 9.2 is included below.

Related to this access road elimination, some additional temporary work area / turnaround area has been added at the western side of HDD 64A. Between approximately stations 45149+00 and 45150+25, this additional limit of work is in agricultural lands not registered with Schenectady County. Other temporary impacts to this particular agricultural land have previously been approved. The temporary impacts will be restored in accordance with Section 14 of the EM&CP. Also, the additional temporary work area is in ESA 1. The added temporary work area does not change impacts to ESA 1. The best management practices in EM&CP Table 9.4 will be followed.

Based on a site visit of the area of the proposed changes on April 9, 2024, and desktop analysis conducted by Hartgen Archeological Associates, Inc, there are no known archaeological sites within the limit of work. However, as previously recommended by Hartgen and approved by the State Historic Preservation Office (SHPO) and DPS via Appendix O of the EM&CP, CHPE will conduct archeological monitoring around splice 144 and the nearby HDD 64A exit work area.

Changes to EM&CP Table 9-2 (Wetland Impacts):

Wetland ID	Jurisdiction	Drawing Station (Appendix C)	Wetland Community Type*	Permanent ROW Impacts (SF)	Temporary Construction Impacts (SF)	Temporary State Regulated Adjacent Area Impacts (SF)
JG	USACE	45135+00	PFO	-	2,448	-
C-PA-E	USACE	45130+50 to 45140+25	PEM	-	-	-
FA-XQ	USACE	45130+50 to 45138+75	PEM	-	-	-

Updates to Excursion Table

Excursion	Parcel ID	Location (Approximate – See Drawings for Details)		Justification for Revision	Change in Environmental Impact
		Sheet	Station Range		
S7- P4B#7	30.15-1-13.3	C-109	45127+04 to 45129+29	Offset from culverts. Trenchless crossing of Freeman’s Bridge Road. Avoidance of remediation site on Lands N/F Ultimate, LLC	<i>No change.</i>
	30.15-1-14				
S7- P4B#7A	30.14-1-11.1	C-109 to C-110	45133+36 to 45140+39	Trenchless crossing of Freeman’s Bridge Road. Avoidance of remediation site on Lands N/F Ultimate, LLC	Reduces impacts to wetland CP-A-E. New impacts to wetland JG.
S7- P4B#8	30.14-2-12	C-109 to C-113	45143+08 to A-P4B 23+41	Trenchless crossing of Freeman’s Bridge Road. Avoidance of remediation site on Lands N/F Ultimate, LLC	<i>No change.</i>
	30.-1-24.411				
	30.-1-24.51				
	39.23-1-3-111				
	30.78-1-2.1				
	30.77-1-10				

Updates to Excursion S7-P4B#7

1. Description of the Excursion

The length of the excursion is approximately 225 linear feet and approximately 83 linear feet are HDD below grade. The proposed excursion occurs approximately 18 linear feet south of the ADZ at the farthest point.

2. Justification

In addition to the previously provided justification, this change is justified as a means to reduce potential conflicts with collocated infrastructure and the traveling public/local roadways.

3. Environmental Impact

- Recreation – *No change.*
- Agricultural Resources -- *No change.*
- Cultural Resources -- *No change.*

- Threatened and Endangered Species – *No change.*
- Wetlands and Streams – *No change.*

New Excursion S7-P4B#7A

1. Description of the Excursion

The length of the excursion is approximately 704 linear feet, and approximately 352 linear feet are HDD below grade with no surface disturbance. The proposed excursion occurs approximately 54 linear feet north of the ADZ at the farthest point.

2. Justification

This excursion is required for workspace for HDD 64AA for the trenchless crossing of Freeman's Bride Road (NY State Route 911F) and to avoid impacts to Lands N/F Ultimate, LLC, currently undergoing soil contamination remediation. This ADZ Excursion request is grounded in engineering reasons and is the minimum necessary to feasibly achieve the installation.

3. Environmental Impact

- Recreation – *Excursion area S7-P4B#7A will not impact any recreational areas.*
- Agricultural Resources -- *Excursion area S7-P4B#7A will not impact any registered agricultural lands.*
- Cultural Resources -- *Excursion area S7-P4B#7A has no known archaeological resources.*
- Threatened and Endangered Species – *Excursion areas S7-P4B#7A described above will not result in any changes to the Facility's impacts on federally listed or state-listed species or habitat.*
- Wetlands and Streams – *Excursion area S7-P4B#7A will result in temporary impacts to the wetland JG, as described in Table 9.2. Updates to Table 9.2 are included in this Change Notice.*

Updates to Excursion S7-P4B#8

1. Description of the Excursion

The length of the excursion is approximately 4,030 linear feet, and approximately 1,541 linear feet are HDD below grade with no surface disturbance. The maximum distance of the excursion from the ADZ is not affected by this change.

2. Justification

The purpose of the revision to the alignment within Excursion S7-P4B#8 is to allow for trenchless crossing of Freeman's Bridge Road and avoidance of remediation site on Lands N/F Ultimate, LLC. This change notice only affects 800 linear feet of the 4,030 excursion. Design and justification for the remainder of the extrusion are not changed.

3. Environmental Impact

- Recreation -- *No change.*
- Agricultural Resources – *This change notice increases temporary impact to agricultural lands not registered with Schenectady County between approximately station 45149+00 and 45150+25 where the temporary work area was expanded. This is required due to elimination of the temporary access road between Freemans Bridge Road and splice 144. Other temporary impacts to this land have previously been approved. The agricultural land will be restored in accordance with Section 14 of the EM&CP.*
- Cultural Resources -- *No change.*
- Threatened and Endangered Species – *No change.*
- Wetlands and Streams – *This change reduces the wetland impacts within Excursion S7-P4B#8 compared to the previously approved design. Updates to Table 9.2 are included in this Change Notice.*

CC Requirements for Modifying an EMCP

#	Certificate Condition	Description of the Proposed change
158	The EM&CP approved by the Commission may incorporate modifications from the EM&CP proposed by the Certificate Holders. No change to the approved EM&CP may thereafter be made except in accordance with the following procedures:	
158(a)	For a proposed change that: (i) would involve a site listed or eligible for listing on the New York State or National Register of Historic Places, the Certificate Holders shall give at least two (2) weeks prior notice to the Field Service Bureau of OPRHP. (ii) would involve any State-regulated wetland or protected stream or water body, the Certificate Holders shall give at least two weeks prior notice to NYSDEC, and, if within the Adirondack Park, to APA. (iii) would affect the occupied habitat of a TE species, the Certificate Holders shall give at least two weeks prior notice to NYSDEC and to the USFWS or NMFS (where applicable) prior to providing notice to DPS staff of the proposed change. (iv) would affect the individual or habitat supporting RTE plants, the Certificate Holders shall give at least two (2) weeks prior notice to NYSDEC and DPS. (v) would involve agricultural land, the Certificate Holders shall give at least two (2) weeks prior notice to Ag & Mkts. (vi) would involve the herbicides planned for use (including mixed proportions, additives or method of application), the Certificate Holders shall give at least thirty (30) days prior notice to NYSDEC. (vii) would affect land or water owned or controlled by CNY, the Certificate Holders shall give at least two (2) weeks prior notice to CNY.	<p>(i) This change does not involve a site listed in the NYS or National Register of Historic Places.</p> <p>(ii) This change does not involve any State-regulated wetland or protected stream or waterbody or the Adirondack Park.</p> <p>(iii) This does involve the occupied habitat of a TE species.</p> <p>(iv) This change does not affect individual species or habitat supporting RTE plants.</p> <p>(v) The change does involve Agricultural Land.</p> <p>(vi) There are no changes in herbicide use as result of the requested revision.</p> <p>(vii) The change is not on land owned or occupied by New York City.</p>
158(b)	The Certificate Holders shall report any proposed changes to the EM&CP to DPS Staff. DPS Staff will refer to the Commission for approval any proposed changes that cause a substantial increase in environmental impact, after consultation with NYSDEC, any proposed changes that relate to contested issues decided during the proceeding, and any proposed changes affecting State highways (but need not do so if the report indicates NYSDOT's agreement to such proposed changes). DPS Staff is authorized to approve all other proposed changes, in accordance with the procedure outlined herein, and will submit reports of such changes to the Secretary or the Secretary's designee, which reports will be posted on the Commission's website under this case number.	See description above.
158(c)	Upon being advised that DPS Staff will refer a proposed change to the Commission, the Certificate Holders shall notify all active parties that have requested to be so notified, as well as property owners or lessees whose property is affected by the proposed change. The notice shall: (i) describe the original conditions and the requested change; (ii) provide documents supporting the request;	N/A

	and (iii) state that persons may comment by writing to the Commission within twenty-one (21) days of the notification date.	
158(d)	The Certificate Holders shall not execute any proposed change until they receive written approval from the Commission (if Commission approval is required pursuant to subparagraph (a) of this paragraph) or oral or written approval from DPS Staff (in the case of a change that Staff has authority to approve) except in emergency situations threatening personal injury, property damage, or severe adverse environmental impact, or as specified in the EM&CP. When the Certificate Holders have obtained oral approval from DPS Staff for a change, DPS Staff will confirm such approval in writing within ten (10) business days.	

Proposed Change Involves New/Additional Impacts to:

- ☐ Site listed or eligible for listing on the New York State or National Register of Historic Places [CC 158(a)(i)]
- ☐ State-regulated wetland or protected stream or water body [CC 158(a)(ii)]
- ☒ Occupied habitat of a TE species [CC 158(a)(iii)]
- ☐ Individual or habitat supporting RTE plants [CC 158(a)(iv)]
- ☒ Agricultural land [CC 158(a)(v)]
- ☐ Herbicides planned for use (including mixed proportions, additives or method of application) [CC 158(a)(vi)]
- ☐ Land or water owned or controlled by CNY [CC 158(a)(vii)]
- ☒ Federally regulated wetland or protected stream or water body [Requires Transmittal to ACOE]

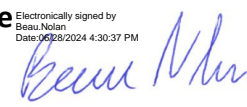

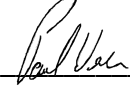
List of References and Attachments:

Segment 7 (Package 4B) EM&CP Appendix E Updates to Excursion GIS Exhibit
Segment 7 (Package 4B) Reviewer Supplement Form
Segment 7 (Package 4B) EM&CP Appendix C Revised Sheets
Segment 7 (Package 4B) EM&CP Appendix J HDD 64AA and HDD 64A Revision Memo

Signoff by: CHPE Overland Team

Date: _____

Approvals

Position	Name	Signature	Date
Segment Engineer:	<u>Beau Nolan</u>	 <small>Electronically signed by Beau Nolan Date: 06/28/2024 4:30:37 PM</small>	<u>6/28/2024</u>
Segment Manager:	<u>Zackary Mayes</u>	 <small>Electronically signed by Zackary Mayes Date: 06/28/2024 4:50:41 PM</small>	<u>06/28/2024</u>
CHPE, LLC Approval:	<u>Paul Weske</u>		<u>07/17/2024</u>
Transmitted to DPS by:	_____	_____	_____
DPS Approval By:	_____	_____	_____
Transmitted to ACOE by:	_____	_____	_____

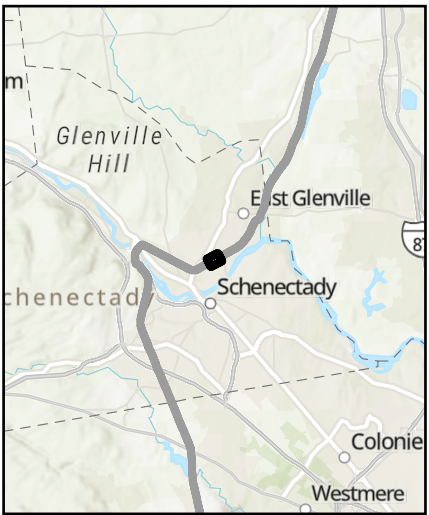
Segment 7 (Package 4B)
**EM&CP Appendix E Updates
to GIS Exhibit**

CHPE EM&CP

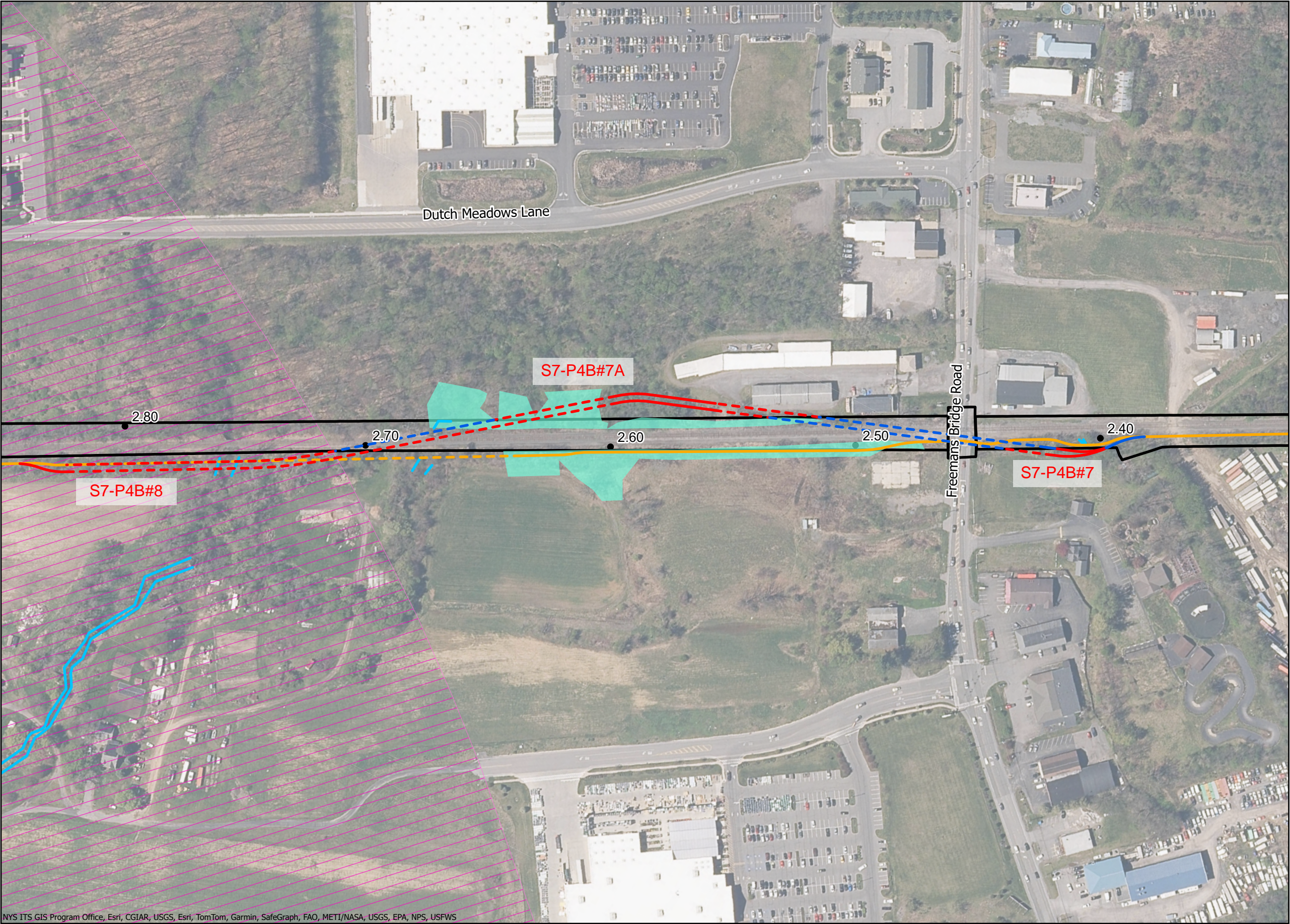
Schenectady County, New York

Deviation Zone Analysis

- ESA 1 Habitat
- Segment 7 Trench Excursion
- Segment 7 HDD Excursion
- Segment 7 HDD
- Segment 7 Trench
- Segment 7 Approved Trench
- Segment 7 Approved HDD
- Delineated Wetlands
- Delineated Streams
- Mile Post
- Deviation Zone



Prepared 06/19/2024
Basemap NYSDOP *2020* map service



Summary of Plan Revisions:

Sheet No.	Rev No.	Revision Description	Summary
G-001	3	NDC-0063: HDD 64AA, HDD 64A REDESIGN	Added C-305.1, C-305A.1, C305B, and C-305C
G-011	2	NDC-0063: HDD 64AA, HDD 64A REDESIGN	Updated Table 4.7
G-013	2	NDC-0063: HDD 64AA, HDD 64A REDESIGN	Updated Tables 4.1, 4.2, & 5.2
G-014	1	NDC-0063: HDD 64AA, HDD 64A REDESIGN	Updated Table 4.4B
G-015	1	NDC-0063: HDD 64AA, HDD 64A REDESIGN	Updated Tables 8.4, 12.3, & 13.3
C-109	2	NDC-0063: HDD 64AA, HDD 64A REDESIGN	Added HDD 64AA so that Freeman's Bridge Road is crossed by HDD instead of trench. Alignment changed to allow sufficient space for HDD pits and for HDD to avoid Lands N/F Ultimate, LLC (30.14-2-12). LOW added east of Freemans Bridge Road for HDD work area. Access road added west of Freeman's Bridge Road to work areas for HDD64AA and 64A.
C-110	1	NDC-0063: HDD 64AA, HDD 64A REDESIGN	Continuation of alignment change discussed above (C-110). Returns to previously-approved alignment at 45145+83. LOW added for HDD HDD 64AA/64A entry (combined) and HDD 64A exit.
C-111	1	NDC-0063: HDD 64AA, HDD 64A REDESIGN	LOW added for HDD 64A exit.
C-304B	0	NDC-0063: ISSUED FOR CONSTRUCTION SUBMISSION	New plan/profile for new HDD (64AA)
C-304C	0	NDC-0063: ISSUED FOR CONSTRUCTION SUBMISSION	New plan/profile for new HDD (64AA)
C-305	1	NDC-0063: HDD 64AA, HDD 64A REDESIGN	Extended and adjusted alignment of HDD64A, as described above (C-110)
C-305.1	0	NDC-0063: ISSUED FOR CONSTRUCTION SUBMISSION	Extended and adjusted alignment of HDD64A. Returns to previously-approved alignment at 45145+83.
C-305A	1	NDC-0063: HDD 64AA, HDD 64A REDESIGN	Extended and adjusted alignment of HDD64A, as described above (C-110)
C-305A.1	0	NDC-0063: ISSUED FOR CONSTRUCTION SUBMISSION	Extended and adjusted alignment of HDD64A. Returns to previously-approved alignment at 45145+83.

NDC-0063 – REVIEWER SUPPLEMENT FORM

C-405	1	NDC-0063: HDD 64AA, HDD 64A REDESIGN	ESC and tree clearing adjustments based on new alignment and LOW.
C-406	2	NDC-0063: HDD 64AA, HDD 64A REDESIGN	ESC and tree clearing adjustments based on new alignment and LOW.

Summary of Affected Easements:

1. LANDS N/F JAMES MASTROIANNI S.B.L. 30.15-1-13.3
2. LANDS N/F DMPM PROPERTY MANAGEMENT S.B.L. 30.15-1-14
3. LANDS N/F ULTIMATE, LLC. S.B.L. 30.14-2-12
4. LANDS N/F JACK ROBINSON REVOCABLE TRUST S.B.L. 30.14-1-11.1
5. LANDS N/F RAYMOND PIOTROWSKI S.B.L. 30.-1-24.51



CHPE LLC
623 Fifth Avenue, 20th Floor
New York, NY 10022

Segment 7 (Package 4B)
EM&CP Appendix C Revised Sheets

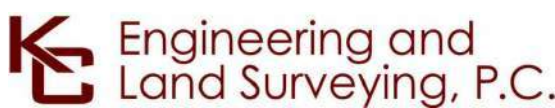
File: C:\USERS\JRAMIREZ\Documents\PROJECT FILES\40 DESIGN ENCL\01 CAD\44B\21162_P4B-G-001_SHEET_INDEX.DWG Saved: 6/13/2024 10:26:23 AM Plotted: 6/13/2024 10:57:55 AM Current User: Jose Ramirez LastSavedBy: jamirez

Sheet List Table	
SHEET NUMBER	SHEET TITLE
PACKAGE 4B: GENERAL SHEETS	
G-000	COVER SHEET
G-001	SHEET INDEX
G-002	GENERAL NOTES
G-003	PACKAGE SPECIFIC NOTES
G-004	SURVEY LEGEND
G-005	KEY PLAN
G-008	SUMMARY OF DUCTBANK LIMITS WITHIN CSX ROW
G-011	EM&CP DATA TABLES (1 OF 6)
G-012	EM&CP DATA TABLES (2 OF 6)
G-013	EM&CP DATA TABLES (3 OF 6)
G-014	EM&CP DATA TABLES (4 OF 6)
G-015	EM&CP DATA TABLES (5 OF 6)
G-016	EM&CP DATA TABLES (6 OF 6)
G-020	RESTORATION NOTES
PACKAGE 4B: PLANS AND PROFILES	
C-101	STA. 45000+00 TO STA. 45015+00 PLAN AND PROFILE
C-102	STA. 45015+00 TO STA. 45030+00 PLAN AND PROFILE
C-103	STA. 45030+00 TO STA. 45045+00 PLAN AND PROFILE
C-104	STA. 45045+00 TO STA. 45060+00 PLAN AND PROFILE
C-105	STA. 45060+00 TO STA. 45075+00 PLAN AND PROFILE
C-106	STA. 45075+00 TO STA. 45090+00 PLAN AND PROFILE
C-107	STA. 45090+00 TO STA. 45105+00 PLAN AND PROFILE
C-108	STA. 45105+00 TO STA. 45120+00 PLAN AND PROFILE
C-109	STA. 45120+00 TO STA. 45135+00 PLAN AND PROFILE
C-110	STA. 45135+00 TO STA. 45150+00 PLAN AND PROFILE
C-111	STA. 45150+00 TO STA. 45165+00 PLAN AND PROFILE
C-112	STA. 45165+00 TO STA. 45180+00 PLAN AND PROFILE
C-113	STA. 45180+00 TO STA. 45195+00 PLAN AND PROFILE
C-114	STA. 45195+00 TO STA. 45210+00 PLAN AND PROFILE
C-115	STA. 45210+00 TO STA. 45225+00 PLAN AND PROFILE
C-116	STA. 45225+00 TO STA. 45240+00 PLAN AND PROFILE
C-117	STA. 45240+00 TO STA. 45255+00 PLAN AND PROFILE
C-118	STA. 45255+00 TO STA. 45270+00 PLAN AND PROFILE
C-119	STA. 45270+00 TO STA. 45285+00 PLAN AND PROFILE
C-120	STA. 45285+00 TO STA. 45300+00 PLAN AND PROFILE
C-121	STA. 45300+00 TO STA. 45315+00 PLAN AND PROFILE
C-122	STA. 45315+00 TO STA. 45330+00 PLAN AND PROFILE
C-123	STA. 45330+00 TO STA. 45345+00 PLAN AND PROFILE
C-124	STA. 45345+00 TO STA. 45360+00 PLAN AND PROFILE
C-125	STA. 45360+00 TO STA. 45375+00 PLAN AND PROFILE
C-126	STA. 45375+00 TO STA. 45390+00 PLAN AND PROFILE
C-127	STA. 45390+00 TO STA. 45405+00 PLAN AND PROFILE
C-128	STA. 45405+00 TO STA. 45420+00 PLAN AND PROFILE
C-129	STA. 45420+00 TO STA. 45435+00 PLAN AND PROFILE
C-130	STA. 45435+00 TO STA. 45450+00 PLAN AND PROFILE
C-131	STA. 45450+00 TO STA. 45465+00 PLAN AND PROFILE
C-132	STA. 45465+00 TO STA. 45480+00 PLAN AND PROFILE
C-133	STA. 45480+00 TO STA. 45494+83 PLAN AND PROFILE
PACKAGE 4B: ACCESS AND CONSTRUCTION STAGING PLANS	
C-201	TEMP ACCESS ROAD 1 OF 4
C-202	TEMP ACCESS ROAD 2 OF 4
C-203	TEMP ACCESS ROAD 3 OF 4
C-204	TEMP ACCESS ROAD 4 OF 4
PACKAGE 4B: HDD PLANS	
C-301	PLAN AND PROFILE -- HDD 62, CONDUIT 1
C-301A	PLAN AND PROFILE -- HDD 62, CONDUIT 2
C-302	PLAN AND PROFILE -- HDD 62A, CONDUIT 1

C-302A	PLAN AND PROFILE -- HDD 62A, CONDUIT 2
C-303	PLAN AND PROFILE -- HDD 63, CONDUIT 1
C-303.1	PLAN AND PROFILE -- HDD 63, CONDUIT 1
C-303A	PLAN AND PROFILE -- HDD 63, CONDUIT 2
C-303A.1	PLAN AND PROFILE -- HDD 63, CONDUIT 2
C-304	PLAN AND PROFILE -- HDD 64, CONDUIT 1
C-304.1	PLAN AND PROFILE -- HDD 64, CONDUIT 1
C-304A	PLAN AND PROFILE -- HDD 64, CONDUIT 2
C-304A.1	PLAN AND PROFILE -- HDD 64, CONDUIT 2
C-305	PLAN AND PROFILE -- HDD 64A, CONDUIT 1
C-305.1	PLAN AND PROFILE -- HDD 64A, CONDUIT 1
C-305A	PLAN AND PROFILE -- HDD 64A, CONDUIT 2
C-305A.1	PLAN AND PROFILE -- HDD 64A, CONDUIT 2
C-305B	PLAN AND PROFILE -- HDD 64AA, CONDUIT 1
C-305C	PLAN AND PROFILE -- HDD 64AA, CONDUIT 2
C-306	PLAN AND PROFILE -- HDD 65A, CONDUIT 1
C-306.1	PLAN AND PROFILE -- HDD 65A, CONDUIT 1
C-306.2	PLAN AND PROFILE -- HDD 65A, CONDUIT 1
C-306A	PLAN VIEW -- HDD 65A, CONDUIT 2
C-306A.1	PROFILE VIEW -- HDD 65A, CONDUIT 2
C-306A.2	PLAN VIEW -- HDD 65A, CONDUIT 2
C-306A.3	PROFILE VIEW -- HDD 65A, CONDUIT 2
C-306A.4	PLAN VIEW -- HDD 65A, CONDUIT 2
C-306A.5	PROFILE VIEW -- HDD 65A, CONDUIT 2
C-307	PLAN AND PROFILE -- HDD 66, CONDUIT 1
C-307A	PLAN AND PROFILE -- HDD 66, CONDUIT 2
C-308	PLAN AND PROFILE -- HDD 67, CONDUIT 1
C-308.1	PLAN AND PROFILE -- HDD 67, CONDUIT 1
C-308A	PLAN AND PROFILE -- HDD 67, CONDUIT 2
C-308A.1	PLAN AND PROFILE -- HDD 67, CONDUIT 2
C-309	PLAN VIEW -- HDD 68, CONDUIT 1
C-309.1	PROFILE VIEW -- HDD 68, CONDUIT 1
C-309.2	PLAN VIEW -- HDD 68, CONDUIT 1
C-309.3	PROFILE VIEW -- HDD 68, CONDUIT 1
C-309A	PLAN VIEW -- HDD 68, CONDUIT 2
C-309A.1	PROFILE VIEW -- HDD 68, CONDUIT 2
C-309A.2	PLAN VIEW -- HDD 68, CONDUIT 2
C-309A.3	PROFILE VIEW -- HDD 68, CONDUIT 2
C-310	PLAN VIEW -- HDD 69, CONDUIT 1
C-310.1	PROFILE VIEW -- HDD 69, CONDUIT 1
C-310.2	PLAN VIEW -- HDD 69, CONDUIT 1
C-310.3	PROFILE VIEW -- HDD 69, CONDUIT 1
C-310.4	PLAN VIEW -- HDD 69, CONDUIT 1
C-310.5	PROFILE VIEW -- HDD 69, CONDUIT 1
C-310A	PLAN VIEW -- HDD 69, CONDUIT 2
C-310A.1	PROFILE VIEW -- HDD 69, CONDUIT 2
C-310A.2	PLAN VIEW -- HDD 69, CONDUIT 2
C-310A.3	PROFILE VIEW -- HDD 69, CONDUIT 2
C-310A.4	PLAN VIEW -- HDD 69, CONDUIT 2
C-310A.5	PROFILE VIEW -- HDD 69, CONDUIT 2
C-311	PLAN VIEW -- HDD 69A, CONDUIT 1
C-311.1	PROFILE VIEW -- HDD 69A, CONDUIT 1
C-311.2	PLAN VIEW -- HDD 69A, CONDUIT 1
C-311.3	PROFILE VIEW -- HDD 69A, CONDUIT 1
C-311A	PLAN VIEW -- HDD 69A, CONDUIT 2
C-311A.1	PROFILE VIEW -- HDD 69A, CONDUIT 2
C-311A.2	PLAN VIEW -- HDD 69A, CONDUIT 2
C-311A.3	PROFILE VIEW -- HDD 69A, CONDUIT 2
C-312	PLAN AND PROFILE -- HDD 70A, CONDUIT 1
C-312.1	PLAN AND PROFILE -- HDD 70A, CONDUIT 1
C-312A	PLAN AND PROFILE -- HDD 70A, CONDUIT 2
C-312A.1	PLAN AND PROFILE -- HDD 70A, CONDUIT 2

C-313	PLAN AND PROFILE -- HDD 70B, CONDUIT 1
C-313A	PLAN AND PROFILE -- HDD 70B, CONDUIT 2
PACKAGE 4B: EROSION AND SEDIMENT CONTROL PLANS	
C-400	E&S KEY PLAN
C-401	STA. 45000+00 TO STA. 45030+00
C-402	STA. 45030+00 TO STA. 45060+00
C-403	STA. 45060+00 TO STA. 45090+00
C-404	STA. 45090+00 TO STA. 45120+00
C-405	STA. 45120+00 TO STA. 45150+00
C-406	STA. 45150+00 TO STA. 45180+00
C-407	STA. 45180+00 TO STA. 45210+00
C-408	STA. 45210+00 TO STA. 45240+00
C-409	STA. 45240+00 TO STA. 45270+00
C-410	STA. 45270+00 TO STA. 45300+00
C-411	STA. 45300+00 TO STA. 45330+00
C-412	STA. 45330+00 TO STA. 45360+00
C-413	STA. 45360+00 TO STA. 45390+00
C-414	STA. 45390+00 TO STA. 45420+00
C-415	STA. 45420+00 TO STA. 45450+00
C-416	STA. 45450+00 TO STA. 45480+00
C-417	STA. 45480+00 TO STA. 45495+00
PACKAGE 4B: MAINTENANCE AND PROTECTION OF TRAFFIC PLANS	
C-501	WORK ZONE TRAFFIC CONTROL NOTES, LEGEND AND ABBREVIATIONS
C-502	SIGNAGE TABLES
C-503	WORK ZONE TRAFFIC CONTROL VLEY ROAD DETOUR
C-504	WORK ZONE TRAFFIC CONTROL DETAILS
C-505	WORK ZONE TRAFFIC CONTROL TYPICAL SECTIONS
C-506	FREEMAN BRIDGE ROAD INTERSECTION DETAIL SHEET 1 OF 2
C-507	FREEMAN BRIDGE ROAD INTERSECTION DETAIL SHEET 2 OF 2
C-508	VLEY ROAD INTERSECTION DETAIL SHEET 1 OF 2
C-509	VLEY ROAD INTERSECTION DETAIL SHEET 2 OF 2
C-510	HDD 68 EXIT PIT DETAIL SHEET
C-511	PUTNAM ROAD INTERSECTION DETAIL SHEET 1 OF 2
C-512	PUTNAM ROAD INTERSECTION DETAIL SHEET 2 OF 2
C-513	WORK ZONE TRAFFIC CONTROL ACCESS ROAD MPT
PACKAGE 4B: ESC DETAILS	
C-601	EROSION AND SEDIMENT CONTROL DETAILS
C-602	EROSION AND SEDIMENT CONTROL DETAILS
C-603	EROSION AND SEDIMENT CONTROL DETAILS
C-604	EROSION AND SEDIMENT CONTROL DETAILS
PACKAGE 4B: EM&CP DETAILS	
C-611	WETLAND CROSSING DETAIL
C-612	WATERBAR DETAILS
C-613	WETLAND WORKING SURFACE
PACKAGE 4B: CONSTRUCTION AND INSTALLATION DETAILS	
C-621	TRENCHING DETAILS
C-622	TYPICAL ACCESS ROAD CROSS SECTIONS
C-623	TYPICAL ACCESS ROAD CROSS SECTIONS
PACKAGE 4B: RAIL DETAILS	
C-625	CSX CROSSING DETAILS 1 OF 2
C-626	CSX CROSSING DETAILS 2 OF 2
C-627	CSX SECURITY GATE DETAIL
PACKAGE 4B: RESTORATION DETAILS	
C-631	SURFACE RESTORATION DETAILS
PACKAGE 4B: HDD DETAILS	
C-641	HDD 62 RAILROAD CROSS SECTION CUT
C-641.1	HDD 62 RAILROAD CROSS SECTION CUT
C-641.2	HDD 62 RAILROAD CROSS SECTION CUT
C-641.3	HDD 62 RAILROAD CROSS SECTION CUT
C-642	HDD 62A RAILROAD CROSS SECTION CUT
C-642.1	HDD 62A RAILROAD CROSS SECTION CUT
C-643	HDD 63 RAILROAD CROSS SECTION CUT

C-643.1	HDD 63 RAILROAD CROSS SECTION CUT
C-644	HDD 64 RAILROAD CROSS SECTION CUT
C-644.1	HDD 64 RAILROAD CROSS SECTION CUT
C-645	HDD 64A RAILROAD CROSS SECTION CUT
C-645.1	HDD 64A RAILROAD CROSS SECTION CUT
C-646	HDD 65A RAILROAD CROSS SECTION CUT
C-646.1	HDD 65A RAILROAD CROSS SECTION CUT
C-647	HDD 66 RAILROAD CROSS SECTION CUT
C-647.1	HDD 66 RAILROAD CROSS SECTION CUT
C-648	HDD 67 RAILROAD CROSS SECTION CUT
C-648.1	HDD 67 RAILROAD CROSS SECTION CUT
C-649	HDD 69A RAILROAD CROSS SECTION CUT
C-649.1	HDD 69A RAILROAD CROSS SECTION CUT
C-649.2	HDD 69A RAILROAD CROSS SECTION CUT
C-649.3	HDD 69A RAILROAD CROSS SECTION CUT
C-649.4	HDD 69A RAILROAD CROSS SECTION CUT
C-649.5	HDD 69A RAILROAD CROSS SECTION CUT
C-649.6	HDD 69A RAILROAD CROSS SECTION CUT
C-649.7	HDD 69A RAILROAD CROSS SECTION CUT
C-650	HDD 70A RAILROAD CROSS SECTION CUT
C-650.1	HDD 70A RAILROAD CROSS SECTION CUT
C-650.2	HDD 70A RAILROAD CROSS SECTION CUT
C-650.3	HDD 70A RAILROAD CROSS SECTION CUT
C-650.4	HDD 70A RAILROAD CROSS SECTION CUT
C-650.5	HDD 70A RAILROAD CROSS SECTION CUT
C-651	HDD 70B RAILROAD CROSS SECTION CUT
C-651.1	HDD 70B RAILROAD CROSS SECTION CUT
PACKAGE 4B: STRUCTURAL DETAILS	
S-711	FRP LINK BOX HANDHOLES
S-771	FRP COMMUNICATION HANDHOLES
PACKAGE 4B: ELECTRICAL DETAILS	
C-801	ABOVE GROUND MARKING DETAILS
C-807	SPLICE VAULT AND CABLE MARKING DETAILS
C-808	TYPICAL OPEN PIT SPLICE CASING DETAILS
C-809	OPEN PIT SPLICE GROUNDING DETAILS
PACKAGE 4B: COMMUNICATIONS DETAILS	
C-853	OPEN VAULT WITH FIBER OPTIC HAND HOLE
C-854	FIBER OPTIC HAND HOLE DETAILS
C-855	FIBER OPTIC SPLICE DIAGRAM
PACKAGE 4B: UTILITY DETAILS	
C-901	UTILITY TYPICAL SEPARATION DETAILS



IT IS A VIOLATION OF LAW FOR ANY PERSON, UNLESS THEY ARE ACTING UNDER THE DIRECTION OF A LICENSED PROFESSIONAL ENGINEER, ARCHITECT, LANDSCAPE ARCHITECT OR LAND SURVEYOR TO ALTER AN ITEM IN ANY WAY. IF AN ITEM BEARING THE STAMP OF A LICENSED PROFESSIONAL IS ALTERED, THE ALTERING ENGINEER, ARCHITECT, LANDSCAPE ARCHITECT OR LAND SURVEYOR SHALL STAMP THE DOCUMENT AND INCLUDE THE NOTATION "ALTERED BY" FOLLOWED BY THEIR SIGNATURE, THE DATE OF SUCH ALTERATION, AND A SPECIFIC DESCRIPTION OF THE ALTERATION.

3	06/11/2024	NDC-0063: HDD 64AA, HDD 64A REDESIGN	DM	BD	
2	05/03/2024	NDC-0019: HDD 67 REDESIGN	BL	BD	
1	11/09/2023	NDC-0015: CSX DEPTH OF COVER UPDATES	DM	BD	
0	07/28/2023	ISSUED FOR CONSTRUCTION SUBMISSION	DM	BD	
No.	DATE	SUBMITTAL / REVISION DESCRIPTION	DB	APP	

CHAMPLAIN HUDSON POWER EXPRESS
SEGMENT 7 (PACKAGE 4B) - CSX - PAN AM SOUTHERN
SHEET INDEX

DRAWN BY: DM DESIGNED BY: DM APPROVED BY: BD SCALE AS NOTED
DATE: 07/28/2023

PERMIT DRAWING NO.

N/A

DRAWING NO.

G-001

Table 7.1 - Agricultural Lands

Segment/ Package	Parcel ID	Sheet Number	Station (Approximate – See Drawings for Details)	Location Description	Anticipated Impacts to Agricultural Activities/Land
S7/P4B	30.-1-3	C-108 to C-109	45108+25 to 45121+00	South of CSX Railroad Tracks north of Freemans Bridge Road from	The majority of the construction activity will occur adjacent to the CSX Railroad ROW. Anticipated impacts to these agricultural lands include the installation of the alignment via HDD (HDD#64) and trenching, the installation of an access road as described in Table 4.6, splice location 143, and vegetation and tree clearing. All impacts associated with construction activity will be fully restored in accordance with Section 14.5. This parcel is registered with a Schenectady Agricultural District.
S7/P4B	30.-1-24.51	C-109 to C-112	45133+00 to 45170+00	South-southeast of the CSX Railroad ROW	The majority of construction activity will take place within the CSX Railroad ROW. However, some impacts to these agricultural lands include the installation of the alignment via trenching and HDD (HDD#64A), installation of an access road as described in Table 4.6, and splice location 144. All impacts associated with construction activity will be fully restored in accordance with Section 14.5.
Note: Table 7.1 summarizes the agricultural lands identified in this Package. Section 7.1 describes the procedures to be followed for all construction related activity within agricultural lands.					

PACKAGE 4B – AGRICULTURAL DISTRICT LANDS

Table 7.2 – Recreational Areas

Segment/ Package	Recreational Area	Location (Approximate – see Drawings for Details)	Anticipated Impacts
S7P/4B	Mohawk-Hudson Bike-Hike Trail	45329+50 (C-122)	This recreational area will be crossed via HDD (HDD#68); therefore no impacts are anticipated.
S7/P4B	Vincent J Schaefer Preserve	45379+00 to 45388+00 (C-126)	The majority of this recreational area will be crossed via HDD. Anticipated impacts may be construction noise and noise mitigation measures described in Section 10.2 will be in plac
Note: Table 7.2 identifies the recreational areas within this Package. Section 7.2 describe the procedures to be followed within recreational areas.			

PACKAGE 4B – RECREATIONAL AREAS

Chapter 4 – Construction Methods

Topic	Section of EM&CP
Cable Installation Requirements	4.2
Horizontal Directional Drilling	4.3
Installation and Performance Controls	4.3.1
Buildings and Structures within 100-ft of HDD	4.3.2
Inadvertant Release Contingency Plan and Drilling Fluid Management	4.3.3, Appendix J
Road Crossing Methods	4.3.4
Trenching	4.4
Trenching in Agricultural Lands	4.4.1
Trenching in Roadways	4.4.2
Trenching in Wetlands	4.4.3
Length of Open Trench	4.4.4
Splicing and Jointing	4.4.5
Dewatering Methods	4.4.6
Bedding and Backfilling Methods	4.4.7
Dredging	Note Applicable for this Segment
Converter Station and Substation Requirements	Note Applicable for this Segment
Right of Ways and Easements	4.7
Right of Way Clearing	4.8 (See also Section 8)
Building and Structure Removal	4.9
Access Roads	4.10
Driveway Access During Construction	4.10.1
Access Through Wetlands or Streams	4.10.2
Access Through Agricultural Lands	4.10.3
Drain Lines and Under Drains Within Agricultural Lands	4.10.4
Soil and Materials Management Plan	4.11 and Appendix L
Culvert Replacement and Temporary Drainage	4.12
Rock Removal	4.13
Inadvertant Damage to Existing Utilities	4.14

Note: The Table above summarizes the construction methods and associated subsections that summarize the measures and standards that will be followed within this Package.

PACKAGE 4B – CONSTRUCTION METHODS

Table 4.7 – Access Roads

Segment/ Package	Sheet Number	Location (Approximate – see Drawings for Details)	Access Road Description	Parcel ID	Type of Access Road	Impacts to Environmentally Sensitive Areas	Impacts to Agricultural Land	Access Road Crosses Railroad
S7/P4B	C-101	45000+00 to 45004+00	Access road on west side of RR tracks starting at HDD#62 work zone and ending at Maple Avenue.	23.13-1-18.11	Type 3, 4, 4A	Wetland FA-S-XU	No	No
S7/P4B	C-101 to C- 102	45004+50 to 45019+00	Access road on west side of RR tracks starting at Maple Avenue and ending at HDD#62A work zone.	23.13-1-18.12, 30.-1- 2.1	Type 3	No	No	No
S7/P4B	C-102 to C- 104	45028+00 to 45051+00	Access road on west side of RR tracks starting at HDD#62A work zone and ending at HDD#63 work zone.	23.17-1-1.4, 23.17-1- 38, 30.-1-2.1, 22.4-1- 24, 22.4-1-25, 22.4-1- 26, 22.4-1-27, 22.4-1- 28, 22.4-1-33, 22.4-1- 34	Type 4, 4A	Wetland C-PA-S5	No	No
S7/P4B	C-105	45064+50 to 45069+50	Access road on east side of RR tracks at intersection of Ronald Reagan Way and Maple Avenue.	30.-1-8.312, 30.-1-2.1	Type 3, 4, 4A	No	No	No
S7/P4B	C-106 to C- 107	45085+00 to 45098+00	Access road on east/southeast side of RR tracks starting at splice location 142 near Maple Avenue and ending at HDD #64 work zone.	30.-1-2.1, 30.-1-5.1	Type 3	No	No	No
S7/P4B	C-108 to C- 109	45111+00 to 45130+00	Access road on east/southeast side of RR tracks starting at HDD#64 work zone and ending at Freemans Bridge Road.	30.-1-2.1, 30.-1-3, 30.15-1-13.3, 30.15-1- 14	Type 4, 4A	Wetland C-PA-SI	Yes	No
S7/P4B	C-109 to C- 110	45130+25 to 45136+00	Access road on east/southeast side of RR tracks starting at Freemans Bridge Road and ending at HDD#64A work zone.	30.14-1-11.1	Type 1	No	No	No
S7/P4B	C-111 to C- 112	45150+00 to 45171+50	Access road on east/southeast side of RR tracks starting at HDD#64A work zone and ending at HDD#65A work zone.	30.-1-2.1, 30.-1-24.51, 39.23-1-3.111, 30.77-1- 9.1	Type 5	No	Yes	No
S7/P4B	C-111/C-201	45155+50	Access road CSX MP 6.08. Perpendicular to alignment.	30.-1-24.51	Type 5	No	Yes	No
S7/P4B	C-114	45198+00 to 45204+00	Access road on south side of RR tracks starting at HDD #65A work zone and ending at Vley Road.	30.77-1-9.1, 29.84-2-2	Type 3	No	No	No
S7/4B	C-114/C-202	45208+50	Access Road CSX MP 7.08	29.75-1-17.11	Type 3	No	No	No
S7/P4B	C-114 to C- 116	45204+00 to 45229+00	Access road on south side of RR tracks starting at Vley Road and ending at HDD#66 work zone.	30.77-1-9.1, 29.75-1- 17.11, 29.66-1-17.2	Type 2, 3	No	No	No
S7/P4B	C-116 to C- 122	45239+00 to 45316+00	Access road on south side of RR tracks starting at HDD#66 work zone and ending at Amsterdam Road.	30.-1-2.1, 29.-3-2.41, 29.-3-25.1, 29.-3-1.11	Type 2, 3	No	No	No
S7/P4B	C-117	45242+75 to 45249+00	Existing access road to be utilized as needed around Scotia Sand & Stone Co. Inc.	29.-3-2.41	Type 1	No	No	No
S7/P4B	C-204	45275+00	Existing access road to be utilized as needed around Belgioioso Cheese Inc.	29.-3-24.1, 29.-3-2.1	Type 3	No	No	No
S7/P4B	C-123	45333+50 to 45337+00	Access road from Exit to Route 5 to HDD#68/69 work zone.	NYSDOT ROW	Type 5	No	No	No
S7/P4B	C-125 to C- 127	45361+50 to 45395+50	Access road from HDD#69 work area.	28.-3-11, 38.-1-1, 38.-1- 20.5	Type 3, 4, 4A	Wetland FA-XH	No	No
S7/P4B	C-127 to C- 128	45395+50 to 45412+50	Access road on west side of RR tracks starting near private crossing near the substation and HDD#69A work zone and ending at HDD#70A work zone.	38.-1-20.5, 38.-1-2.31	Type 3, 4, 4A	Wetland FA-XL & FA-XK	No	No
S7/P4B	C-128 to C- 130	45413+00 to 45448+75	Access road on east side of RR tracks starting at Nimo Power Private Crossing and ending at HDD#70B work zone.	38.-1-20.5, 38.-2-1	Type 3, 4, 4A	Wetland 12-8-C, Stream 12-8 S-3	No	No
S7/P4B	C-203	45413+00	Temp Access Road 3 of 3	38.-1-20.5, 38.-1-2.31	Type 1, 2	No	No	No
S7/P4B	C-131 to C- 133	45453+25 to 45486+25	Access road on east side of RR tracks starting at HDD#70B work zone and ending at Putnam road.	38.-1-20.5, 38.17-3-1, 48.5-1-1	Type 3	No	No	No
S7/P4B	C-133	45487+50 to End of Package 4B	Access road on east side of RR tracks starting at Putnam road and ending at splice location 154B near Princetown road.	38.-1-20.5, 48.5-2-32	Type 3	No	No	No
Notes: Table 4.6 identifies each proposed access road in this Package, their locations and any sensitive areas that are crossed. For access roads that are perpendicular to the alignment, the disturbance zone in which sensitive areas was evaluated begins at the end of the Railroad or Road ROW.								

PACKAGE 4B – ACCESS ROADS

- NOTES:
- THE STORMWATER POLLUTION PREVENTION PLAN INCLUDED IN APPENDIX G OF THE EM&CP DESCRIBES THE EROSION AND SEDIMENT CONTROLS THAT WILL BE FOLLOWED FOR THIS PACKAGE.
 - THE EROSION AND SEDIMENT CONTROL PLANS CAN BE FOUND ON SHEET C–400 TO SHEET C–418 FOR THIS PACKAGE.

PACKAGE 4B – EM&CP EROSION AND SEDIMENT CONTROL NOTES

NOTE: THE NOISE RECEPTORS THAT MAY OCCUR NEAR THIS PACKAGE AT VARIOUS POINTS INCLUDE RESIDENCES AND BUSINESSES. SECTION 10.2 DESCRIBES THE NOISE CONTROL MEASURES THAT WILL BE EMPLOYED THROUGHOUT THIS PACKAGE.

PACKAGE 4B – EM&CP NOISE SENSITIVE AREAS NOTE

Table 9.3 – FEMA Flood Zones in Segment 7

Segment/ Package	Sheet Number	Approximate Location - (see Drawings for Details)	Flood Zone	Flood Zone Definition
S7/P4B	C-404	45102+15 to 45103+80	Zone A	1% Annual Chance Floodway Boundary
S7/P4B	C-404	45101+60	Zone A	1% Annual Chance Floodway Boundary
S7/P4B	C-405	45146+25	Zone A	1% Annual Chance Floodway Boundary
S7/P4B	C-405	45145+80	Zone A	1% Annual Chance Floodway Boundary
S7/P4B	C-406	45179+65	Zone A	1% Annual Chance Floodway Boundary
S7/P4B	C-406	45175+60	Zone AE	Floodway Boundary. The base floodplain where base flood elevations are provided.
S7/P4B	C-406	45173+30	Zone A	1% Annual Chance Floodway Boundary
S7/P4B	C-411	45329+00	Zone A	1% Annual Chance Floodway Boundary
S7/P4B	C-411	45323+90	Zone AE	Floodway Boundary The base floodplain where base flood elevations are provided.
S7/P4B	C-411	45317+80	Zone AE	Floodway Boundary
S7/P4B	C-411	45317+50	Zone A	1% Annual Chance Floodway Boundary The base floodplain where base flood elevations are provided.
S7/P4B	C-412	45340+50	Zone A	1% Annual Chance Floodway Boundary
S7/P4B	C-412	45331+50	Zone A	1% Annual Chance Floodway Boundary
Note: Table 9.3 summarizes the flood zones identified along the Segment 7 alignment.				

NOTE:

- FEMA FIRM Maps are provided in Appendix D of the Stormwater Pollution Prevention Plan which is included in Appendix G of the EM&CP.

PACKAGE 4B – FEMA

Table 4.5 – Access Road Types

Method Type	Description	Dimensions	Construction Details
Construction Entrance	Construction entrance	16' standard or 20' perpendicular; 50' minimum length	• Placed on geofabric • 12" thick minimum
Type 1	Paved or existing gravel roads requiring minor or no maintenance (e.g., Parking lots, Local/state roads, Railroad or private gravel roads)	14' standard, 16' splice access, 20' perpendicular	• 0" to 6" of gravel
Type 2	Existing railroad and gravel access roads	14' standard, 16' splice access, 20' perpendicular	• Spot fill & re-grading required • Soil stripping, filter fabric, and gravel surfacing required in new area • 6" of gravel
Type 3	Proposed new roads (roads shown in places without existing access)	14' standard, 16' splice access, 20' perpendicular	• Soil stripping on average to be 4" • Cut slopes based on type of material encountered but no steeper than ½ h to 1 v • Fill slopes based on type of material encountered but no steeper than 1 h to 1 v • Placed on geo-fabric • 12" of gravel
Type 4	Temporary construction access through wetlands, streams, or marshy terrain	14' standard, 16' splice access, 20' perpendicular	• Utilizing standard timber 8"x4"x16' crane mats • 3-ply matting may be used as a substitute (except when crossing streams)
Type 4A	Temporary construction access through wetlands, streams, or marshy terrain when matting is not practical (e.g., sinking mats). Used only in extreme cases; typically, will only be implemented after a Type 4 road has been attempted and determined to be unsuitable.	14' standard, 16' splice access, 20' perpendicular	• Filter fabric • 2' of rip-rap • 4" of gravel to top off
Type 5	Temporary construction access through agricultural fields	14' standard, 16' splice access, 20' perpendicular	• 3-ply mats or timber matting; requires moving to establish road
Note: Table 4.5 summarizes each access road type, its dimensions, proposed use, and additional construction details. Section 4.10 describes the procedures to be followed during the construction of all access roads			

PACKAGE 4B – ACCESS ROAD TYPES

NOTE: SECTION 11.0 AND APPENDIX O DESCRIBE THE CULTURAL RESOURCES IDENTIFIED WITHIN THIS PACKAGE AND THE BEST MANAGEMENT PRACTICES TO FOLLOW TO PROTECT THESE RESOURCES. SECTION 11.3 AND 11.4 DESCRIBE THE PROCEDURES TO FOLLOW DURING THE UNANTICIPATED DISCOVERY OF ARCHEOLOGICAL RESOURCES OR HUMAN REMAINS.

PACKAGE 4B – EM&CP CULTURAL RESOURCES NOTE



Kiewit



Engineering and
Land Surveying, P.C.

FOR INFORMATION SEE THE ENVIRONMENTAL MANAGEMENT AND CONSTRUCTION PLAN NARRATIVE.

2	06/11/2024	NDC-0063: HDD 64AA, HDD 64A REDESIGN				DM	BD		
1	05/03/2024	NDC-0019: HDD 67 REDESIGN				JR	BD		
0	07/28/2023	ISSUED FOR CONSTRUCTION SUBMISSION				DM	BD		
No.	DATE	SUBMITTAL / REVISION DESCRIPTION				DB	APP		

CHAMPLAIN HUDSON POWER EXPRESS
SEGMENT 7 (PACKAGE 4B) - CSX - PAN AM SOUTHERN
EM&CP DATA TABLES (1 OF 6)

DRAWN BY: DM DESIGNED BY: DM APPROVED BY: BD SCALE AS NOTED
DATE: 07/28/2023

PERMIT DRAWING NO.

N/A

DRAWING NO.

G-011

Table 4.1 - HDD Locations

Segment/ Package	HDD Designation	Length (feet)	Reason for HDD	Sheet	Location (Approximate- see Drawings for Details)
S7/P4B	HDD#62	830/875	NYSDOT Road (Maple Ave)	C-101	45000+80 to 45009+50
S7/P4B	HDD#62A	714/729	Stream C-PA-S6	C-102	45019+80 to 45027+05
S7/P4B	HDD#63	1236	NYSDOT Road (Ronald Reagan Way), Streams C-PA-S4 and C-PA- S3, Railroad	C-104 to C-105	45052+33 to 45064+70
S7/P4B	HDD#64	1300	Trout Stream C-PA-S2 (876-88) Wetland C-PA-S1 and C-PA-S6	C-107 to C-108	45098+36 to 45112+07
S7/P4B	HDD#64AA	1200	NYSDOT Road, NYSDEC Contaminated site	C-109 to C-110	45128+38 to 45135+58
S7/P4B	HDD#64A	1197	Culverts, NYSDEC Contaminated site avoidance.	C-110	45137+73 to 45149+71
S7/P4B	HDD#65A	2752/2591	NYSDOT Road/Bridge	C-112 to C-113	A-P4B 12+80 to A-P4B 38+34
S7/P4B	HDD#66	970	NYSDOT Road	C-116	45228+90 to 45238+60
S7/P4B	HDD#67	690/885	Rail	C-119 to C-120	45273+33 to 45287+88
S7/P4B	HDD#68	1895/1898	Mohawk River	C-122	45314+10 to 45333+00
7/4B	HDD#69	2216/2211	Road (I-890)/Rail	C-123 to C-124	45337+00 to 45359+10
S7/P4B	HDD#69A	2331	Rail/Culvert	C-124 to C-126	45375+40 to 45399+50
S7/P4B	HDD#70A	1794/1796	Rail	C-126 to C-127	45414+70 to 45432+90
S7/P4B	HDD#70B	607/609	Road	C-130 to C-131	45447+45 to 45453+45

Note: Table 4.1 describes the locations of HDD activity within this Package. HDD will be performed in accordance with the Horizontal Direction Drilling Site Investigation and Planning Report and Inadvertent Release and Contingency Plan in Appendix J, the specifications described in Section 4.3.1, and the BMP document.

PACKAGE 4B – HDD LOCATIONS

Table 5.2 – Construction Materials and Equipment Staging
Locations

Segment/ Package	Sheet Number	Location (Approximate- see Drawings for Details)	Staging Area Description
S7/P4B	C-101	45000+80	HDD-62 Entry Area
S7/P4B	C-101	45009+50	HDD-62 Exit Area
S7/P4B	C-102	45019+80	HDD-62A Entry Area
S7/P4B	C-102	45027+05	HDD-62A Exit Area
S7/P4B	C-104	45052+33	HDD-63 Entry Area
S7/P4B	C-105	45064+70	HDD-63 Exit Area
S7/P4B	C-107	45098+36	HDD-64 Entry Area
S7/P4B	C-108	45112+07	HDD-64 Exit Area
S7/P4B	C-109	45128+00	HDD-64AA Exit Area
S7/P4B	C-110	45136+00	HDD-64A+HDD-64AA Entry Area
S7/P4B	C-110	45149+60	HDD-64A Exit Area
S7/P4B	C-112	A-P4B 11+00	HDD-65A Entry Area
S7/P4B	C-114	45202+00	HDD-65A Exit Area
S7/P4B	C-116	45228+90	HDD-66 Entry Area
S7/P4B	C-116	45238+60	HDD-66 Exit Area
S7/P4B	C-119	45274+00	HDD-67 Entry Area
S7/P4B	C-120	45287+30	HDD-67 Exit Area
S7/P4B	C-122	45314+10	HDD-68 Entry Area
S7/P4B	C-122	45333+00	HDD-68 Exit Area
S7/P4B	C-123	45337+00	HDD-69 Entry Area
S7/P4B	C-124	45359+10	HDD-69 Exit Area
S7/P4B	C-124	45375+40	HDD-69A Entry Area
S7/P4B	C-126	45399+50	HDD-69A Exit Area
S7/P4B	C-126	45414+70	HDD-70A Entry Area
S7/P4B	C-127	45432+90	HDD-70A Exit Area
S7/P4B	C-130	45447+45	HDD-70B Entry Area
S7/P4B	C-131	45453+45	HDD-70B Exit Area
See EM&CP for Laydown Yards			Bethlehem Laydown Yard

Note: Table 5.2 summarizes the locations of where construction materials and equipment will be temporarily staged during the construction of this Package. Section 5.4 summarizes the procedures that will be followed for the storage and staging of all construction materials and equipment.

PACKAGE 4B – CONSTRUCTION MATERIALS AND EQUIPMENT

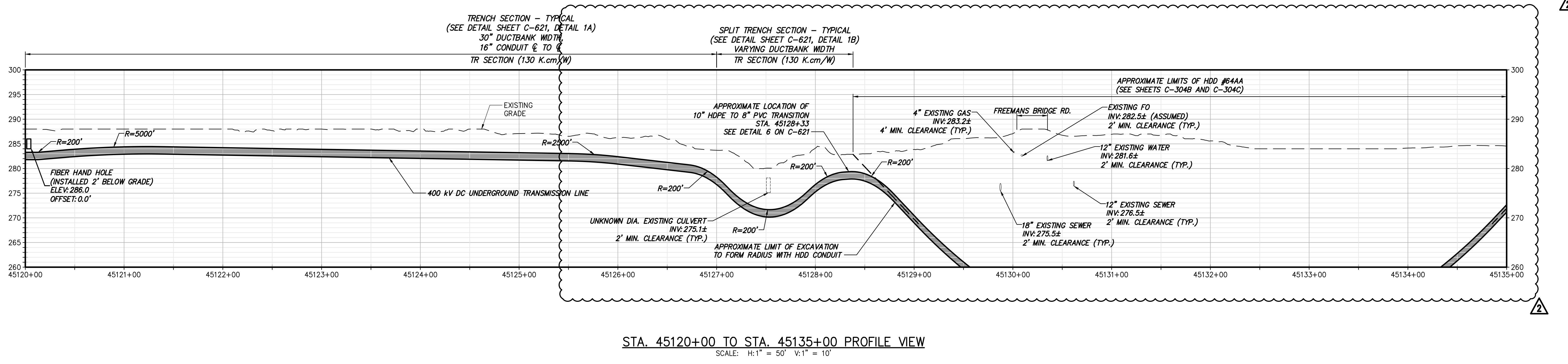
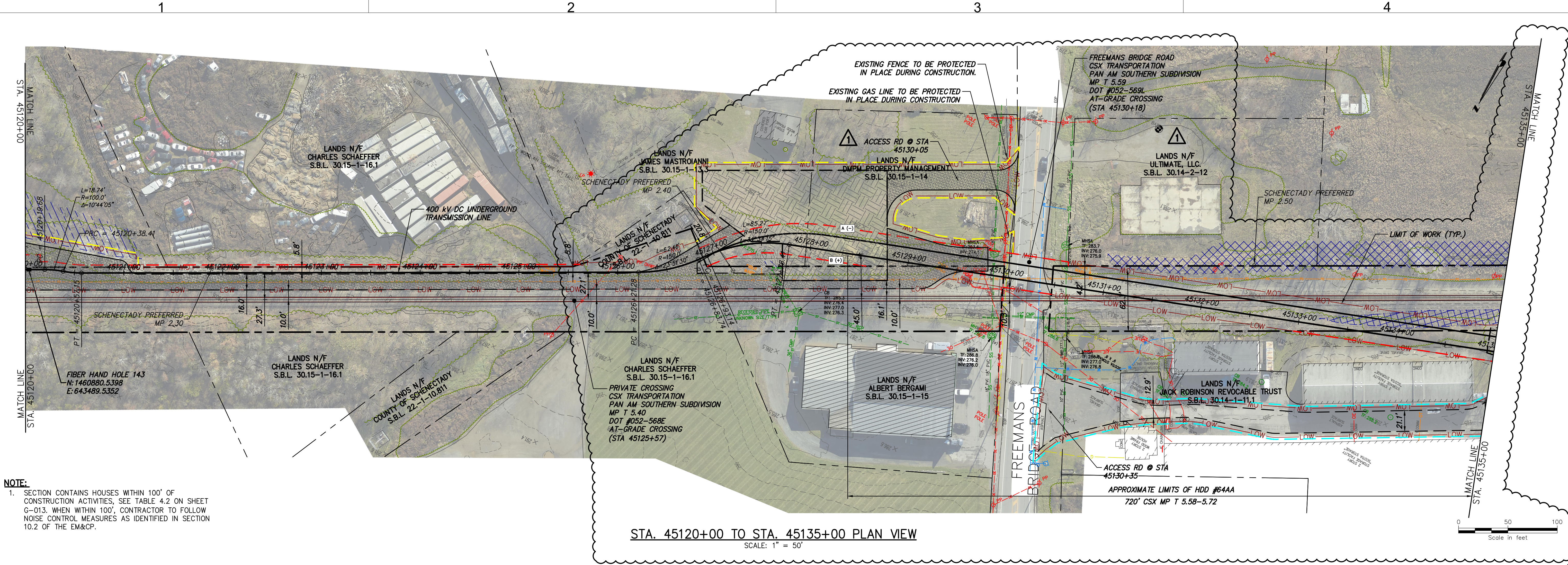
STAGING LOCATIONS

Table 4.2 - Structures within 100 Feet of HDD or Trenching Operations

HDD#/ Trench	Structure	Parcel ID	Sheet Number	Location (Approximate – see Drawings for Details)	Notes
HDD#62	Shed – Private Residence	23.13-1-18.12	C-101	45007+00	W. Side of Maple Ave.
Trench	Private Residence	23.13-1-19	C-101	45008+00	E. Side of Maple Ave.
HDD#62A	Private Residence	23.17-1-50	C-102	45024+00	E. Side of Acorn Dr
HDD#62A	Private Residence	23.17-1-50	C-102	45025+00	E. Side of Acorn Dr.
Trench	Shed – Private Residence	23.17-1-38	C-102	45029+00	E. Side of Acorn Dr.
Trench	Private Residence	23.17-1-39	C-103	45030+00	E. Side of Valleywood Dr.
Trench	Shed – Private Residence	23.17-1-37	C-102	45031+00	E. Side of Valleywood Dr.
Trench	Shed & Pool – Private Residence	23.17-1-36	C-103	45032+00	E. Side of Valleywood Dr.
Trench	Shed – Private Residence	23.17-1-35	C-103	45033+00	E. Side of Valleywood Dr.
Trench	Pool – Private Residence	23.17-1-34	C-103	45034+00	E. Side of Valleywood Dr.
Trench	Private Residence	23.17-1-33	C-103	45035+00	E. Side of Valleywood Dr.
Trench	Shed & Pool – Private Residence	23.17-1-32	C-103	45036+00	E. Side of Valleywood Dr.
Trench	Private Residence	23.17-1-31	C-103	45037+00	E. Side of Valleywood Dr.
Trench	Private Residence	22.4-1-23	C-103	45039+00	E. Side of Valleywood Dr.
Trench	Private Residence	22.4-1-24	C-103	45040+00	E. Side of Valleywood Dr.
Trench	Shed – Private Residence	23.-2-22	C-103	45041+00	W. Side of Maple Ave.
Trench	Shed – Private Residence	23.-2-21	C-103	45044+50	W. Side of Maple Ave.
Trench	Shed – Private Residence	23.-2-20	C-103	45044+50	W. Side of Maple Ave.
Trench	Pool – Private Residence	22.4-1-25	C-103	45042+00	E. Side of Valleywood Dr.
Trench	Shed – Private Residence	22.4-1-26	C-103	45043+00	E. Side of Valleywood Dr.
Trench	Shed – Private Residence	23.-2-19	C-104	45046+50	W. Side of Maple Ave.
Trench	Pool – Private Residence	22.4-1-28	C-104	45045+00	E. Side of Valleywood Dr.
Trench	Pool & Shed – Private Residence	22.4-1-30	C-104	45047+50	E. Side of Valleywood Dr.
Trench	Shed - Private Residence	23.-2-18	C-104	45048+75	W. Side of Maple Ave.
Trench	Shed – Private Residence	22.4-1-31	C-104	45048+00	E. Side of Valleywood Dr.
Trench	Private Residence	22.4-1-32	C-104	45049+00	E. Side of Valleywood Dr.
Trench	Private Residence	22.4-1-33	C-104	45052+00	E. Side of Valleywood Dr.
Trench	Shed – Private Residence	22.-1-17	C-104	45051+50	W. Side of Maple Ave.
Trench	Pool – Private Residence	22.4-1-34	C-104	45052+75	E. Side of Valleywood Dr.
Trench	Shed – Private Residence	30.-1-6.12	C-107	45091+00	W. Side of Maple Ave.
Trench	Private Residence	30.-1-6.12	C-107	45094+00	W. Side of Maple Ave.
Trench	Storage Tanks	30.15-1-16.1	C-109	45121+25	E. Side of Freemans Bridge Rd.
Trench	Commercial Building	30.15-1-13.3	C-109	45127+75	E. Side of Freemans Bridge Rd. S. of RRR ROW
HDD#64AA	Commercial Building	30.15-1-15	C-109	45129+00	W. Side of Freemans Bridge Rd. N. of RRR ROW
HDD#64AA	Commercial Building	30.14-1-11.1	C-109	45132+00	W. Side of Freemans Bridge Rd. N. of RRR ROW
HDD#64AA	Commercial Building	30.14-2-12	C-109	45132+00	W. Side of Freemans Bridge Rd. N. of RRR ROW
Trench	Private Residence	30.-1-24.51	C-111	45163+00	Development currently being built.
Trench	Private Residences	30.-1-24.51	C-111	45163+00	Development currently being built.
HDD#65A	Private Residences	30.78-2-1.1	C-112	45177+00	N. Side of Cambridge Manor Dr.
HDD#65A	Electric Substation	30.77-2-29.11	C-112	45178+75	N. Side of Washington Ave.
HDD#65A	Private Residence	30.77-1-11	C-113	45184+50	N. Side of 5 th St.
HDD#65A	Private Residence	30.77-1-13	C-113	45185+00	N. Side of 5 th St.
HDD#65A	Private Residence	30.77-1-14	C-113	45186+50	N. Side of 5 th St.
HDD#65A	Private Residence	30.77-1-15	C-113	45187+00	N. Side of 5 th St.
HDD#65A	Private Residence	30.77-1-16	C-113	45188+00	N. Side of 5 th St.
HDD#65A	Private Residence	30.77-1-17	C-113	45189+00	N. Side of 5 th St.
HDD#65A	Private Residence	30.77-1-18	C-113	45190+00	N. Side of 5 th St.
HDD#65A	Private Residence	30.77-1-19.11	C-113	45191+00	N. Side of 5 th St.
HDD#65A	Private Residence	30.77-1-47.21	C-113	45191+50	N. Side of 5 th St.
HDD#65A	Private Residence	30.77-1-46.11	C-113	45192+50	N. Side of 5 th St.
HDD#65A	Private Residence	30.77-1-20.111	C-113	45193+00	N. Side of 5 th St.
HDD#65A	Shed & Private Residence	30.77-1-5	C-113	45186+00	S. Side of Pershing Dr.
HDD#65A	Shed - Private Residence	30.77-1-3	C-113	45187+50	S. Side of Pershing Dr.
HDD#65A	Shed - Private Residence	30.77-1-2	C-113	45188+00	S. Side of Pershing Dr.
HDD#65A	Shed - Private Residence	30.77-1-1	C-113	45189+00	S. Side of Pershing Dr.
HDD#65A /Trench	Industrial Building	29.84-2-2	C-114	45197+00	E. Side of Vley Rd.
Trench	Commercial Building	29.84-2-2	C-114	45199+25	E. Side of Vley Rd.
Trench	Commercial Building	29.84-2-2	C-114	45203+00	E. Side of Vley Rd.
Trench	Commercial Building	29.84-2-1	C-114	45204+00	E. Side of Vley Rd. N. Side of RRR ROW.
Trench	Commercial Building	29.76-1-18	C-114	45204+00	W. Side of Vley Rd
Trench	Municipal Building	29.75-1-17.11	C-114	45206+00	N. Side of Zoar Ct.
Trench	Municipal Building	29.75-1-17.11	C-114	45209+00	N. Side of Zoar Ct.
Trench	Garage – Private Residence	29.75-1-17	C-115	45210+00	N. Side of Craigie Ave.
Trench	Shed - Private Residence	29.75-1-16.2	C-115	45213+00	N. Side of Craigie Ave.
Trench	Shed - Private Residence	29.75-1-15	C-115	45213+50	N. Side of Craigie Ave.
Trench	Shed Private Residence	29.75-1-14	C-115	45214+00	N. Side of Craigie Ave.
Trench	Private Residence	29.75-1-31	C-115	45215+00	S. Side of Watercrest Dr.
Trench	Private Residence	29.75-1-39	C-115	45215+50	S. Side of Watercrest Dr.
Trench	Pool & Shed - Private Residence	29.75-1-12	C-115	45216+00	N. Side of Craigie Ave.
Trench	Private Residence	29.75-1-29	C-115	45216+00	S. Side of Watercrest Dr.

Trench	Shed - Private Residence	29.75-1-28	C-115	45216+50	S. Side of Watercrest Dr.
Trench	Private Residence	29.75-1-11	C-115	45217+00	N. Side of Craigie Ave.
Trench	Private Residence	29.75-1-10	C-115	45217+50	N. Side of Craigie Ave.
Trench	Pool & Shed - Private Residence	29.67-1-4	C-115	45217+00	S. Side of Watercrest Dr.
Trench	Private Residence	29.67-1-5	C-115	45217+50	S. Side of Watercrest Dr.
Trench	Private Residence	29.75-1-9	C-115	45218+00	N. Side of Craigie Ave.
Trench	Private Residence	29.67-1-6	C-115	45218+50	S. Side of Watercrest Dr.
Trench	Private Residence	29.78-1-8	C-115	45218+75	N. Side of Craigie Ave.
Trench	Private Residence	29.75-1-7	C-115	45219+00	N. Side of Craigie Ave.
Trench	Shed – Private Residence	29.67-1-7	C-115	45219+50	N. Side of Craigie Ave.
Trench	Private Residence	29.75-1-6	C-115	45219+50	N. Side of Craigie Ave.
Trench	Private Residence	29.75-1-4	C-115	45220+50	N. Side of Craigie Ave..
Trench	Private Residence	29.75-1-3	C-115	45221+00	N. Side of Craigie Ave.
Trench	Private Residence	29.75-1-1.1	C-115	45222+25	N. Side of Craigie Ave.
Trench	Private Residence	29.66-1-17.1	C-115	45224+00	N. Side of Craigie Ave.
Trench	Shed – Private Residence	29.66-1-14	C-116	45227+00	S. Side of Mac Arthur Dr.
Trench	Pool – Private Residence	29.66-1-13	C-116	45227+50	S. Side of Mac Arthur Dr.
HDD#66	Pool – Private Residence	29.66-1-12	C-116	45228+25	S. Side of Mac Arthur Dr.
HDD#66	Pool – Private Residence	29.66-1-11	C-116	45228+75	S. Side of Mac Arthur Dr.
HDD#66	Shed – Private Residence	29.66-1-10	C-116	45229+25	S. Side of Mac Arthur Dr.
HDD#66	Commercial Building	29.66-1-22.1	C-116	45230+00	N. Side of Merline Ave.
HDD#66	Shed – Private Residence	269.66-1-22.1	C-116	45231+25	N. Side of Merline Ave.
HDD#66	Shed – Private Residence	29.66-1-9	C-116	45229+75	S. Side of Mac Arthur Dr.
HDD#66	Shed – Private Residence	29.66-1-8	C-116	45230+25	S. Side of Mac Arthur Dr.
HDD#66	Shed – Private Residence	29.66-1-7	C-116	45231+00	S. Side of Mac Arthur Dr.
HDD#66	Shed – Private Residence	29.66-1-6	C-116	45231+50	S. Side of Mac Arthur Dr.
HDD#66	Shed – Private Residence	29.66-1-5	C-116	45231+75	S. Side of Mac Arthur Dr.
HDD#66	Shed – Private Residence	29.66-1-4	C-116	45232+25	S. Side of Mac Arthur Dr.
HDD#66	Shed – Private Residence	29.66-1-3	C-116	45232+75	S. Side of Mac Arthur Dr.
HDD#66	Shed – Private Residence	29.66-1-2	C-116	45233+25	S. Side of Mac Arthur Dr.
HDD#66	Shed – Private Residence	29.66-1-1	C-116	45234+00	S. Side of Mac Arthur Dr.
HDD#66	Commercial Building	29.66-1-24	C-116	45232+00	E. Side of NYS Rt. 147
HDD#66	Industrial Building	29.-3-2.41	C-116	45237+00	W. Side of NYS Rt. 147
HDD#66	Industrial Building	29.-2-19.1	C-116	45240+00	W. Side of NYS Rt. 147
Trench	Industrial Building	29.-2-18.2	C-117	45244+00	W. Side of NYS Rt. 147
Trench	Industrial Building	29.-2-14.111	C-117	45245+00	W. Side of NYS Rt. 147
Trench	Industrial Building	29.-3-2.41	C-117	45248+00	N. Side of Patent Pkwy.
Trench	Industrial Building	29.-3-2.31/30.-1-2.1	C-117	45252+25	N. Side of Patent Pkwy.
Trench	Industrial Building	29.-3-2.31/30.-1-2.1	C-117	45254+00	N. Side of Patent Pkwy.
Trench/HDD #67	Industrial Building	29.-3-24.1	C-119	45275+00	N. Side of 1 st St.
HDD#67	Sheds	29.-3-24.1	C-119	45284+00	N. Side of 1 st St.
Trench	Industrial Building	29.-3-1.12	C-121	45310+00	N. Side of NYS Route 5 (Amsterdam Rd)
HDD#69A	Electric Tower	38.-1-2.31	C-127	45395+50	W. Side of NYS Rt. 890
HDD#70B/Trench	Private Residence	38.17-3-1	C-131	45453+50	W. Side of Sylvia Ln.
Trench	Shed – Private Residence	38.17-3-2	C-131	45456+00	W. Side of Sylvia Ln.
Trench	Private Residence	38.17-3-47	C-131	45448+50	W. Side of Sylvia Ln.
Trench	Private Residence	38.17-3-46	C-131	45460+00	W. Side of Sylvia Ln.
Trench	Shed & Private Residence	38.17-3-45	C-131	45460+50	W. Side of Sylvia Ln.
Trench	Shed & Private Residence	38.17-3-44	C-131	45461+50	W. Side of Sylvia Ln.
Trench	Private Residence	38.17-3-43	C-131	45462+50	W. Side of Sylvia Ln.
Trench	Private Residence	38.17-3-42	C-131	45463+00	W. Side of Sylvia Ln.
Trench	Private Residence	38.17-3-41	C-131	45464+00	W. Side of Sylvia Ln.
Trench	Private Residence	38.17-3-40	C-131	45464+50	W. Side of Sylvia Ln.
Trench	Private Residence	38.17-3-39	C-132	45465+50	W. Side of Sylvia Ln.
Trench	Private Residence	38.17-3-38	C-132	45466+50	W. Side of Sylvia Ln.
Trench	Private Residence	38.17-3-37	C-132	45467+00	W. Side of Sylvia Ln.
Trench	Private Residence	38.17-3-52	C-132	45468+00	W. Side of Sylvia Ln.
Trench	Private Residence	38.17-3-51	C-132	45468+75	W. Side of Iovinnella Ct.
Trench	Private Residence	38.17-3-50	C-132	45469+50	W. Side of Iovinnella Ct.
Trench	Private Residence	38.17-3-78	C-132	45470+50	W. Side of Iovinnella Ct.
Trench	Shed & Private Residence	38.17-3-77	C-132	45471+00 & 45471+50	W. Side of Iovinnella Ct.

File: C:\USERS\DMCKENNA\DC\ACCDGCS\VIEW\01480-CHPE_TRANS\PROJECT FILES\40 DESIGN ENG\01 CAD\48\2162_4B-C-108-C-110.DWG Saved: 6/11/2024 8:56:07 AM Plotted: 6/11/2024 8:56:07 AM Current User: Devin McKenna LastSavedBy: dmckenna



PROJECT NO.: 21162

PROJECT NO.: 120174

ALTERED ON:

PROJECT NO.: 120174

Engineering and Land Surveying, P.C.



IT IS A VIOLATION OF LAW FOR ANY PERSON, UNLESS THEY ARE ACTING UNDER THE DIRECTION OF A LICENSED PROFESSIONAL ENGINEER, ARCHITECT, LANDSCAPE ARCHITECT OR LAND SURVEYOR TO ALTER AN ITEM IN ANY WAY. IF AN ITEM BEARING THE STAMP OF A LICENSED PROFESSIONAL IS ALTERED, THE ALTERING ENGINEER, ARCHITECT, LANDSCAPE ARCHITECT OR LAND SURVEYOR SHALL STAMP THE DOCUMENT AND INCLUDE THE NOTATION, ALTERED BY, FOLLOWED BY THEIR SIGNATURE, THE DATE OF SUCH ALTERATION, AND A SPECIFIC DESCRIPTION OF THE ALTERATION.

No.	DATE	SUBMITTAL / REVISION DESCRIPTION	DB	APP
2	06/11/2024	NDC-0063: HDD 64AA, HDD 64A REDESIGN	DM	BD
1	02/09/2024	NDC-0012: NYSDOT TIER 3 COMMENTS	JR	BD
0	07/28/2023	ISSUED FOR CONSTRUCTION SUBMISSION	DM	BD

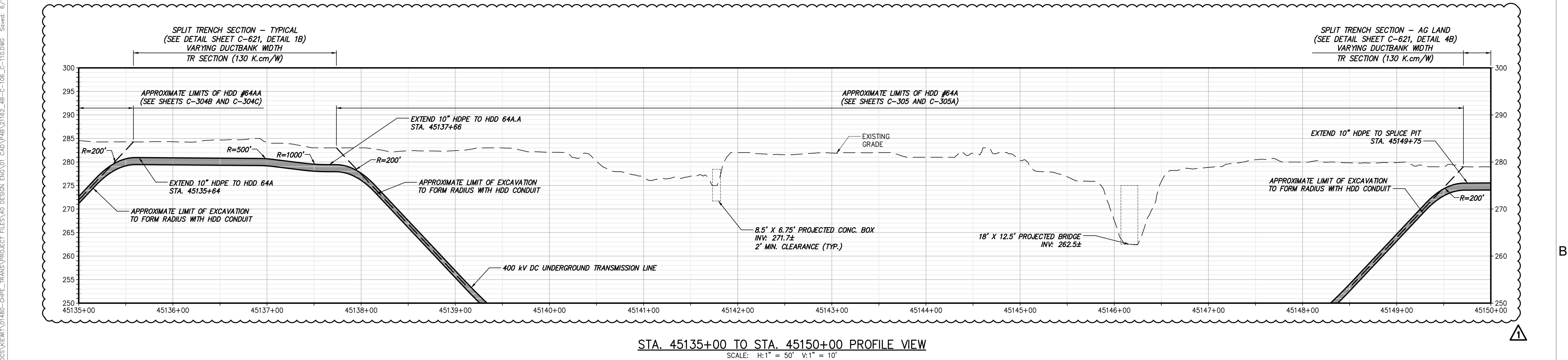
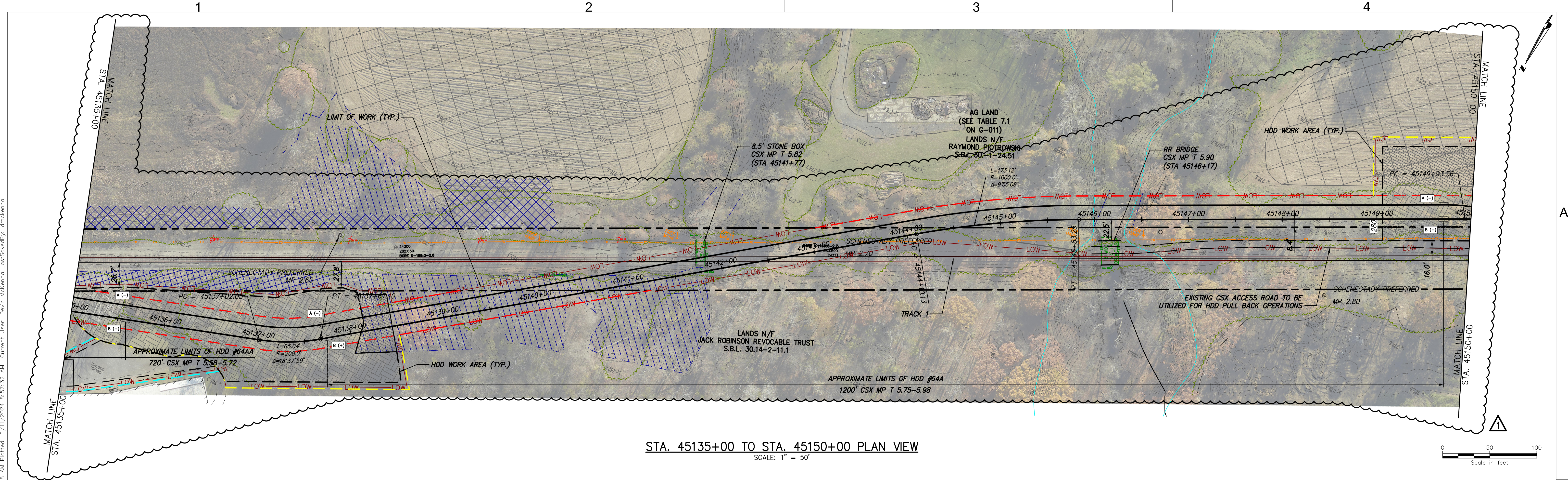
CHAMPLAIN HUDSON POWER EXPRESS
SEGMENT 7 (PACKAGE 4B) - CSX - PAN AM SOUTHERN
STA. 45120+00 TO STA. 45135+00 PLAN AND PROFILE


DRAWN BY: DM DESIGNED BY: DM APPROVED BY: BD SCALE AS NOTED DATE: 07/28/2023

PERMIT DRAWING NO.
C-109-B


DRAWING NO.
C-109

File: C:\USERS\DMCKENNA\DC\ACCDGCS\VIEW\01480-CHPE_TRANS\PROJECT FILES\40 DESIGN\ENG\01 CAD\N48\2162_4B-C-108-C-110.DWG Saved: 6/11/2024 8:57:32 AM Current User: Devin McKenna LastSavedBy: dmckenna

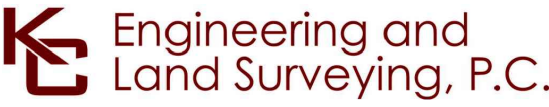




Champlain Hudson
Power Express



Kiewit




Engineering and
Land Surveying, P.C.

PROJECT NO.: 21162

PROJECT NO.: 120174

ALTERED ON:

AFFIXED ON: 06/11/2024



IT IS A VIOLATION OF LAW FOR ANY PERSON, UNLESS THEY ARE ACTING UNDER THE DIRECTION OF A LICENSED PROFESSIONAL ENGINEER, ARCHITECT, LANDSCAPE ARCHITECT OR LAND SURVEYOR TO ALTER AN ITEM IN ANY WAY. IF AN ITEM BEARING THE STAMP OF A LICENSED PROFESSIONAL IS ALTERED, THE ALTERING ENGINEER, ARCHITECT, LANDSCAPE ARCHITECT OR LAND SURVEYOR SHALL STAMP THE DOCUMENT AND INCLUDE THE NOTATION "ALTERED BY" FOLLOWED BY THEIR SIGNATURE, THE DATE OF SUCH ALTERATION, AND A SPECIFIC DESCRIPTION OF THE ALTERATION.

No.	DATE	SUBMITTAL / REVISION DESCRIPTION	DB	APP
1	06/11/2024	NDC-0063: HDD 64AA, HDD 64A REDESIGN	DM	BD
0	07/28/2023	ISSUED FOR CONSTRUCTION SUBMISSION	DM	BD

DRAWN BY: DM

DESIGNED BY: DM

APPROVED BY: BD

SCALE AS NOTED
DATE: 07/28/2023

CHAMPLAIN HUDSON POWER EXPRESS
SEGMENT 7 (PACKAGE 4B) - CSX - PAN AM SOUTHERN
STA. 45135+00 TO STA. 45150+00 PLAN AND PROFILE

PERMIT DRAWING NO.
N/A

DRAWING NO.
C-110