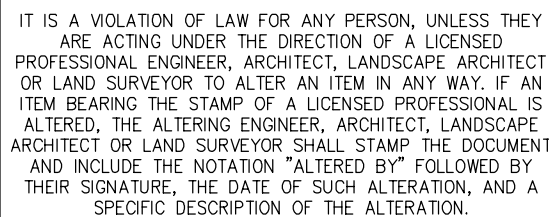




SCALE: 1" = 50'



						CHAMPLAIN HUDSON POWER EXPRESS SEGMENTS 4 & 5 (PACKAGE 3) - CP: FORT EDWARD TO MILTON ACCESS DRIVE AT STA. 31102+00						KIEWIT PROJECT NO. 21162				
												CHA PROJECT NO. 068076				
												DRAWING NO.				
												C-220A				
0	04/05/2023	FINAL EM&CP SUBMISSION			JJE	JPR										
No.	DATE	SUBMITTAL / REVISION DESCRIPTION			DB	APP	DRAWN BY:	JJE	DESIGNED BY:	JTM	APPROVED BY:	JPR	SCALE REV. NO.	AS NOTED	DATE SH.NO.	04/05/2023



















File: V:\PROJECTS\ANY\K6\066076.000\09\_DESIGN\DRAWINGS\01\_SHEETS\DESIGN PACKAGE 3\066076\_P3 - C-225.DWG Saved: 3/30/2023 3:57:26 PM Plotted: 4/3/2023 12:00:04 PM Current User: Zeyer, Torik LastSavedBy: 8314



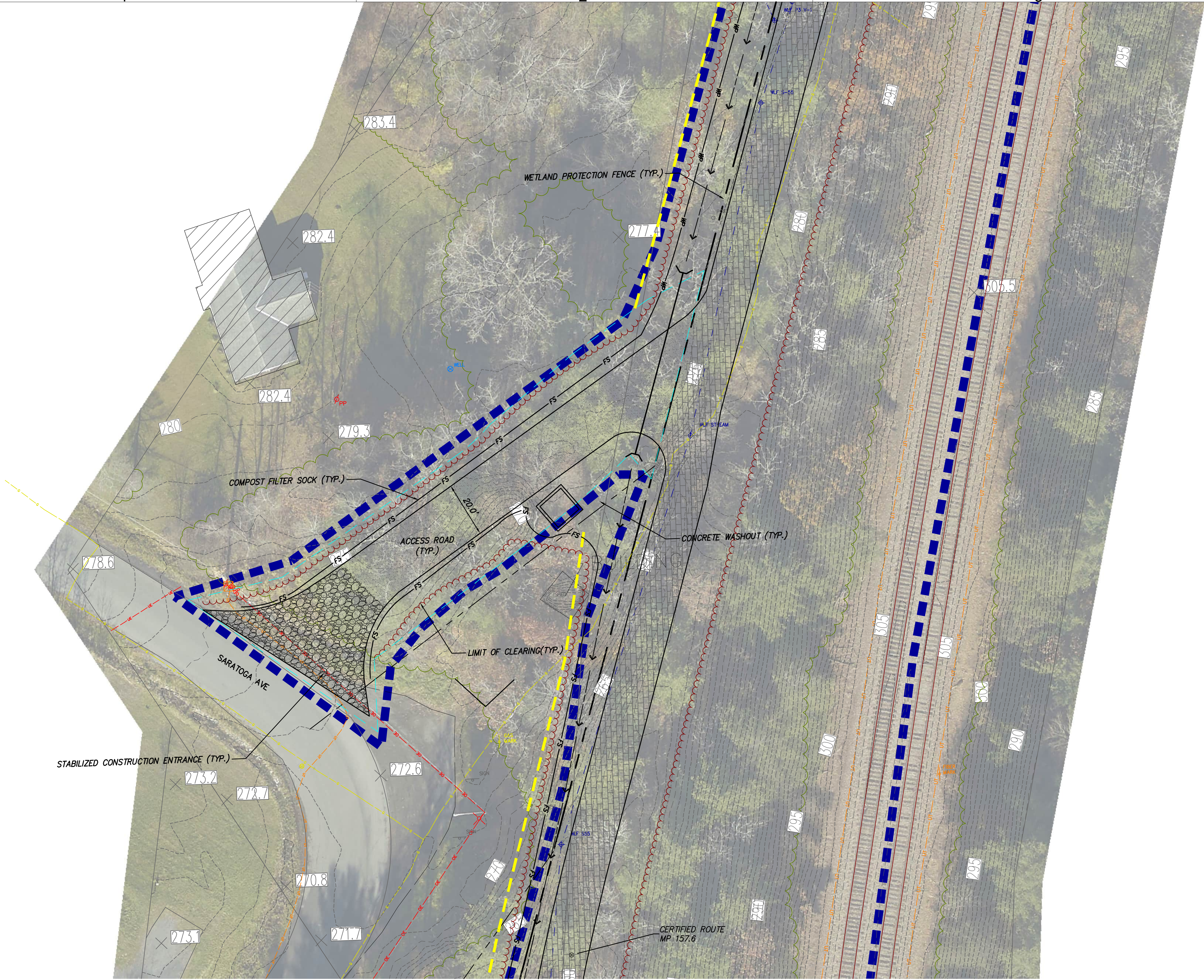
IT IS A VIOLATION OF LAW FOR ANY PERSON, UNLESS THEY ARE ACTING UNDER THE DIRECTION OF A LICENSED PROFESSIONAL ENGINEER, ARCHITECT, LANDSCAPE ARCHITECT OR LAND SURVEYOR TO ALTER AN ITEM IN ANY WAY. IF AN ITEM BEARING THE STAMP OF A LICENSED PROFESSIONAL IS ALTERED, THE ALTERING ENGINEER, ARCHITECT, LANDSCAPE ARCHITECT OR LAND SURVEYOR SHALL STAMP THE DOCUMENT AND INCLUDE THE NOTATION "ALTERED BY" FOLLOWED BY THEIR SIGNATURE, THE DATE OF SUCH ALTERATION, AND A SPECIFIC DESCRIPTION OF THE ALTERATION.

0	04/05/2023	FINAL EM&CP SUBMISSION	JJE	JPR					
No.	DATE	SUBMITTAL / REVISION DESCRIPTION	DB	APP					

CHAMPLAIN HUDSON POWER EXPRESS  
SEGMENTS 4 & 5 (PACKAGE 3) - CP: FORT EDWARD TO MILTON  
ACCESS DRIVE AT STA. 31322+00

DRAWN BY: JJE DESIGNED BY: JTM APPROVED BY: JPR SCALE AS NOTED  
REV. NO.

KIEWIT PROJECT NO.	21162
CHA PROJECT NO.	066076
DRAWING NO.	C-225
DATE	04/05/2023
SH.NO.	



ACCESS DRIVE AT STA. 31322+00  
SCALE: 1" = 20'

LANDS N/A  
ERIC BROTH  
TM# 203.-1



File: V:\PROJECTS\ANY\6\066076.000\09\_DESIGN\DRAWINGS\01\_SHEETS\DESIGN PACKAGE 3\066076\_P3 - C-400.DWG Saved: 4/12/2023 8:28:45 AM Plotted: 4/12/2023 10:56:39 AM Current User: Moore, Elizabeth LastSavedBy: 829



EROSION AND SEDIMENT CONTROL KEY MAP  
SCALE: 1" = 3000'



IT IS A VIOLATION OF LAW FOR ANY PERSON, UNLESS THEY ARE ACTING UNDER THE DIRECTION OF A LICENSED PROFESSIONAL ENGINEER, ARCHITECT, LANDSCAPE ARCHITECT OR LAND SURVEYOR TO ALTER AN ITEM IN ANY WAY. IF AN ITEM BEARING THE STAMP OF A LICENSED PROFESSIONAL IS ALTERED, THE ALTERING ENGINEER, ARCHITECT, LANDSCAPE ARCHITECT OR LAND SURVEYOR SHALL STAMP THE DOCUMENT AND INCLUDE THE NOTATION "ALTERED BY" FOLLOWED BY THEIR SIGNATURE, THE DATE OF SUCH ALTERATION, AND A SPECIFIC DESCRIPTION OF THE ALTERATION.

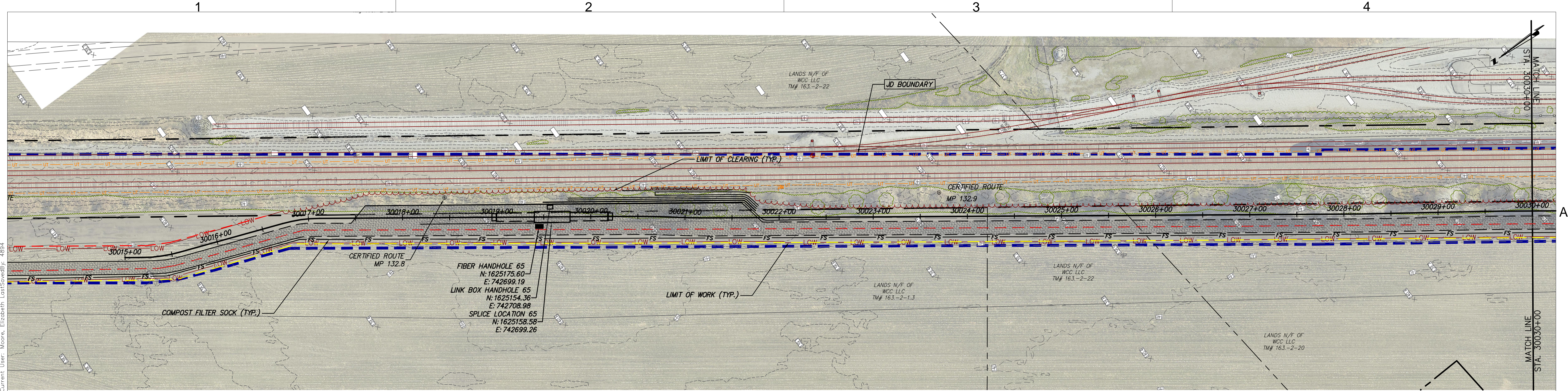
0	04/05/2023	FINAL EM&CP SUBMISSION			JJE	JPR			
No.	DATE	SUBMITTAL / REVISION DESCRIPTION			DB	APP			

CHAMPLAIN HUDSON POWER EXPRESS  
SEGMENTS 4 & 5 (PACKAGE 3) - CP: FORT EDWARD TO MILTON  
E&S KEYPLAN

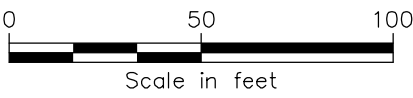
DRAWN BY: JTM DESIGNED BY: JTM APPROVED BY: JPR SCALE AS NOTED  
REV. NO. X

KIEWIT PROJECT NO.	21162
CHA PROJECT NO.	066076
DRAWING NO.	C-400
DATE	04/05/2023
SH.NO.	XXX





STA. 30015+00 TO STA. 30030+00 PLAN VIEW  
SCALE: 1" = 50'



File: V:\PROJECTS\ANY\6\066076\_000\09\_DESIGN\DRAWINGS\01\_SHEETS\DESIGN PACKAGE 3\066076\_P3 - C-401 - C-403.DWG Saved: 4/12/2023 8:22:54 AM Plotted: 4/12/2023 10:57:40 AM Current User: Moore, Elizabeth LastSaveBy: 4894



IT IS A VIOLATION OF LAW FOR ANY PERSON, UNLESS THEY ARE ACTING UNDER THE DIRECTION OF A LICENSED PROFESSIONAL ENGINEER, ARCHITECT, LANDSCAPE ARCHITECT OR LAND SURVEYOR TO ALTER AN ITEM IN ANY WAY. IF AN ITEM BEARING THE STAMP OF A LICENSED PROFESSIONAL IS ALTERED, THE ALTERING ENGINEER, ARCHITECT, LANDSCAPE ARCHITECT OR LAND SURVEYOR SHALL STAMP THE DOCUMENT AND INCLUDE THE NOTATION "ALTERED BY" FOLLOWED BY THEIR SIGNATURE, THE DATE OF SUCH ALTERATION, AND A SPECIFIC DESCRIPTION OF THE ALTERATION.

0	04/05/2023	FINAL EM&CP SUBMISSION	JJE	JPR					
No.	DATE	SUBMITTAL / REVISION DESCRIPTION	DB	APP					

CHAMPLAIN HUDSON POWER EXPRESS  
SEGMENTS 4 & 5 (PACKAGE 3) - CP: FORT EDWARD TO MILTON  
STA. 30000+00 TO STA. 30030+00 EROSION AND  
SEDIMENT CONTROL PLAN

DRAWN BY: JJE DESIGNED BY: JTM APPROVED BY: JPR SCALE AS NOTED DATE 04/05/2023  
REV. NO. X SH.NO.

KIEWIT PROJECT NO.	21162
CHA PROJECT NO.	066076
DRAWING NO.	C-401
DATE	04/05/2023
SH.NO.	