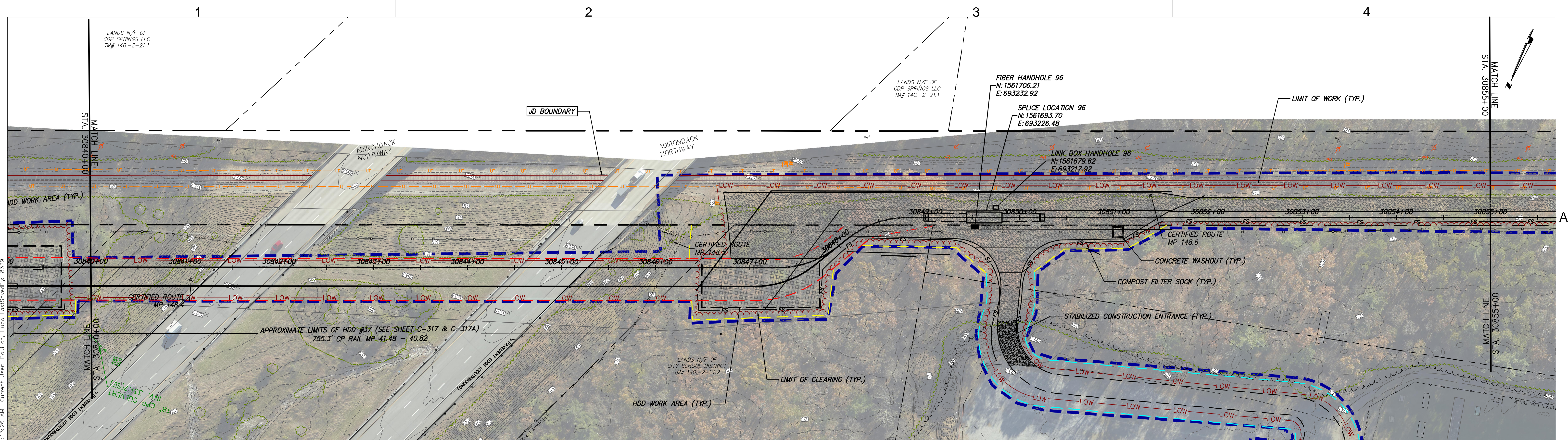
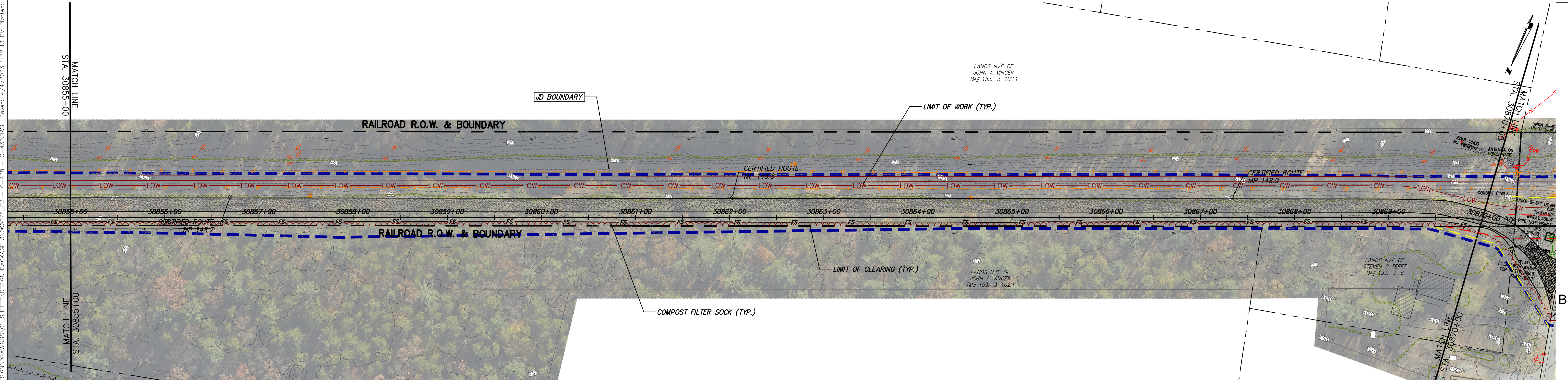


IT IS A VIOLATION OF LAW FOR ANY PERSON, UNLESS THEY ARE ACTING UNDER THE DIRECTION OF A LICENSED PROFESSIONAL ENGINEER, ARCHITECT, LANDSCAPE ARCHITECT OR LAND SURVEYOR TO ALTER AN ITEM IN ANY WAY. IF AN ITEM BEARING THE STAMP OF A LICENSED PROFESSIONAL IS ALTERED, THE ALTERING ENGINEER, ARCHITECT, LANDSCAPE ARCHITECT OR LAND SURVEYOR SHALL STAMP THE DOCUMENT AND INCLUDE THE NOTATION "ALTERED BY" FOLLOWED BY THEIR SIGNATURE, THE DATE OF SUCH ALTERATION, AND A SPECIFIC DESCRIPTION OF THE ALTERATION.


						<div>CHAMPLAIN HUDSON POWER EXPRESS SEGMENTS 4 & 5 (PACKAGE 3) - CP: FORT EDWARD TO MILTON STA. 30810+00 TO STA. 30840+00 EROSION AND SEDIMENT CONTROL PLAN</div>								KIEWIT PROJECT NO. 21162		
														CHA PROJECT NO. 066076		
														DRAWING NO.		
														C-428		
0	04/05/2023	FINAL EM&CP SUBMISSION			JJE	JPR										
No.	DATE	SUBMITTAL / REVISION DESCRIPTION			DB	APP	DRAWN BY:	JJE	DESIGNED BY:	JTM	APPROVED BY:	JPR	SCALE REV. NO.	AS NOTED X	DATE SH NO.	04/05/2023




STA. 30840+00 TO STA. 30855+00 PLAN VIEW
SCALE: 1" = 50'




STA. 30855+00 TO STA. 30870+00 PLAN VIEW
SCALE: H:1" = 50' V:1" = 10'



Champlain Hudson
Power Express



Kiewit



III Winners Circle, PO Box 5269
Albany, NY 12205-0269
518.453.4500 • www.chacompanies.com

IT IS A VIOLATION OF LAW FOR ANY PERSON, UNLESS THEY ARE ACTING UNDER THE DIRECTION OF A LICENSED PROFESSIONAL ENGINEER, ARCHITECT, LANDSCAPE ARCHITECT OR LAND SURVEYOR TO ALTER AN ITEM IN ANY WAY. IF AN ITEM BEARING THE STAMP OF A LICENSED PROFESSIONAL IS ALTERED, THE ALTERING ENGINEER, ARCHITECT, LANDSCAPE ARCHITECT OR LAND SURVEYOR SHALL STAMP THE DOCUMENT AND INCLUDE THE NOTATION "ALTERED BY" FOLLOWED BY THEIR SIGNATURE, THE DATE OF SUCH ALTERATION, AND A SPECIFIC DESCRIPTION OF THE ALTERATION.

No.	DATE	SUBMITTAL / REVISION DESCRIPTION	DB	APP
0	04/05/2023	FINAL EM&CP SUBMISSION	JJE	JPR

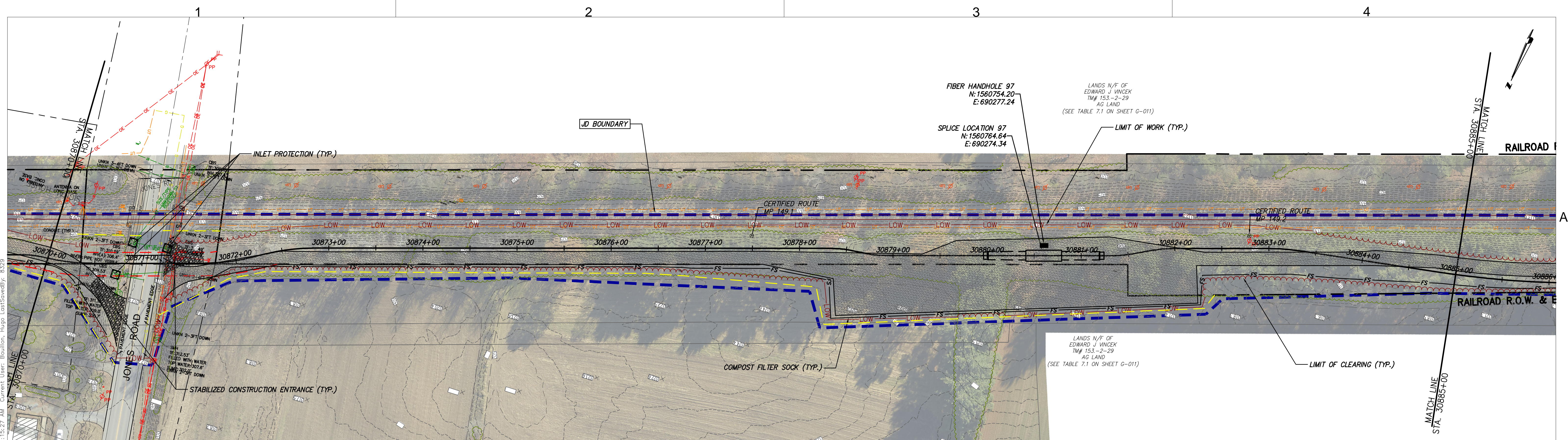
CHAMPLAIN HUDSON POWER EXPRESS
SEGMENTS 4 & 5 (PACKAGE 3) - CP: FORT EDWARD TO MILTON
STA. 30840+00 TO STA. 30870+00 EROSION AND
SEDIMENT CONTROL PLAN

DRAWN BY: JJE DESIGNED BY: JTM APPROVED BY: JPR SCALE AS NOTED
REV.NO. X SH.NO.

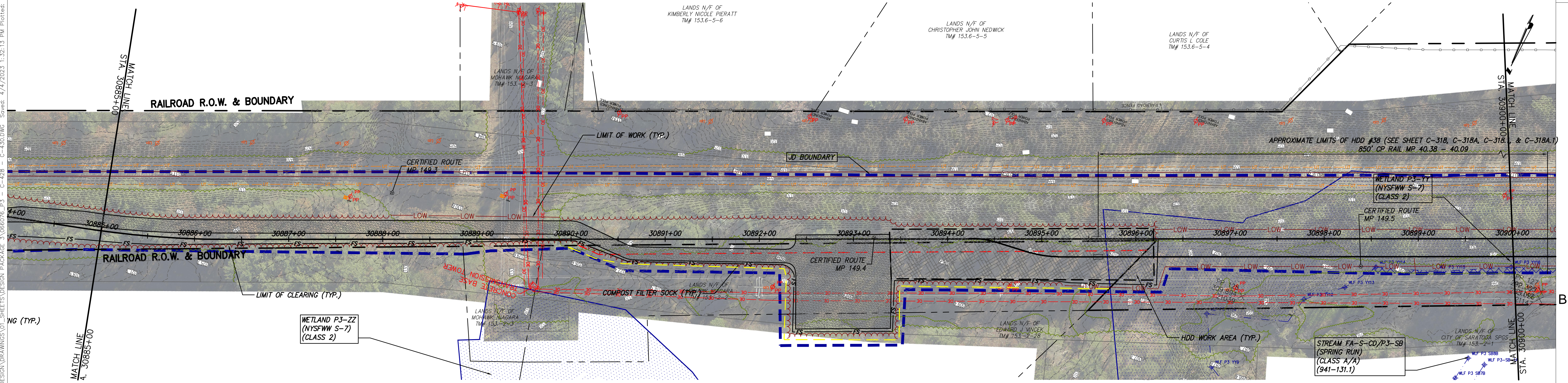
KIEWIT PROJECT NO.
21162
CHA PROJECT NO.
066076
DRAWING NO.
C-429

DATE
04/05/2023




File: V:\PROJECTS\ANY\6\06076\00\09\DESIGN\DRAWINGS\01_SHEETS\DESIGN PACKAGE 3\06076_P3 - C-428 - C-430.DWG. Saved: 4/4/2023 1:32:13 PM. Plotted: 4/12/2023 11:15:27 AM. Current User: Bouillon, Hugo. LastSavedBy: 8329



STA. 30870+00 TO STA. 30885+00 PLAN VIEW
SCALE: 1" = 50'



STA. 30885+00 TO STA. 30900+00 PLAN VIEW
SCALE: H:1" = 50' V:1" = 10'



III Winners Circle, PO Box 5269
Albany, NY 12205-0269
518.453.4500 • www.chacompanies.com

IT IS A VIOLATION OF LAW FOR ANY PERSON, UNLESS THEY ARE ACTING UNDER THE DIRECTION OF A LICENSED PROFESSIONAL ENGINEER, ARCHITECT, LANDSCAPE ARCHITECT OR LAND SURVEYOR TO ALTER AN ITEM IN ANY WAY. IF AN ITEM BEARING THE STAMP OF A LICENSED PROFESSIONAL IS ALTERED, THE ALTERING ENGINEER, ARCHITECT, LANDSCAPE ARCHITECT OR LAND SURVEYOR SHALL STAMP THE DOCUMENT AND INCLUDE THE NOTATION "ALTERED BY" FOLLOWED BY THEIR SIGNATURE, THE DATE OF SUCH ALTERATION, AND A SPECIFIC DESCRIPTION OF THE ALTERATION.

No.	DATE	SUBMITTAL / REVISION DESCRIPTION	DB	APP
0	04/05/2023	FINAL EM&CP SUBMISSION	JJE	JPR

CHAMPLAIN HUDSON POWER EXPRESS
SEGMENTS 4 & 5 (PACKAGE 3) - CP: FORT EDWARD TO MILTON
STA. 30870+00 TO STA. 30900+00 EROSION AND SEDIMENT CONTROL PLAN

DRAWN BY: JJE DESIGNED BY: JTM APPROVED BY: JPR

SCALE AS NOTED
REV. NO. X

KIEWIT PROJECT NO. 21162
CHA PROJECT NO. 06076
DRAWING NO. C-430

DATE 04/05/2023
SH.NO.