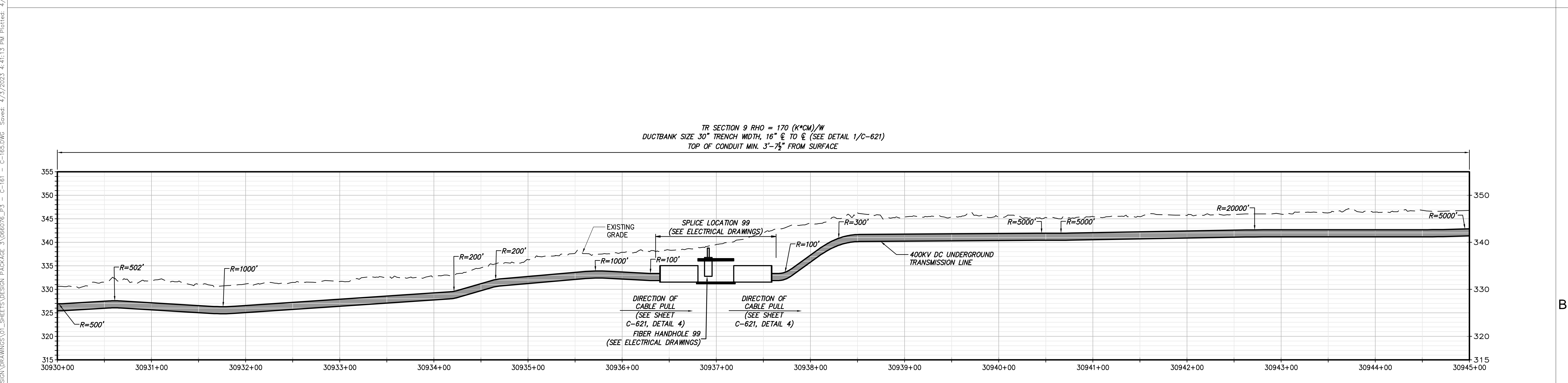
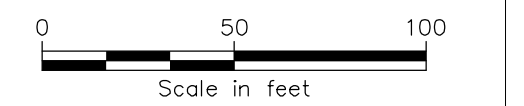


STA. 30930+00 TO STA. 30945+00 PLAN VIEW
SCALE: 1" = 50'



STA. 30930+00 TO STA. 30945+00 PROFILE VIEW
SCALE: H:1" = 50' V:1" = 10'



IT IS A VIOLATION OF LAW FOR ANY PERSON, UNLESS THEY ARE ACTING UNDER THE DIRECTION OF A LICENSED PROFESSIONAL ENGINEER, ARCHITECT, LANDSCAPE ARCHITECT OR LAND SURVEYOR TO ALTER AN ITEM IN ANY WAY. IF AN ITEM BEARING THE STAMP OF A LICENSED PROFESSIONAL IS ALTERED, THE ALTERING ENGINEER, ARCHITECT, LANDSCAPE ARCHITECT OR LAND SURVEYOR SHALL STAMP THE DOCUMENT AND INCLUDE THE NOTATION "ALTERED BY" FOLLOWED BY THEIR SIGNATURE, THE DATE OF SUCH ALTERATION, AND A SPECIFIC DESCRIPTION OF THE ALTERATION.

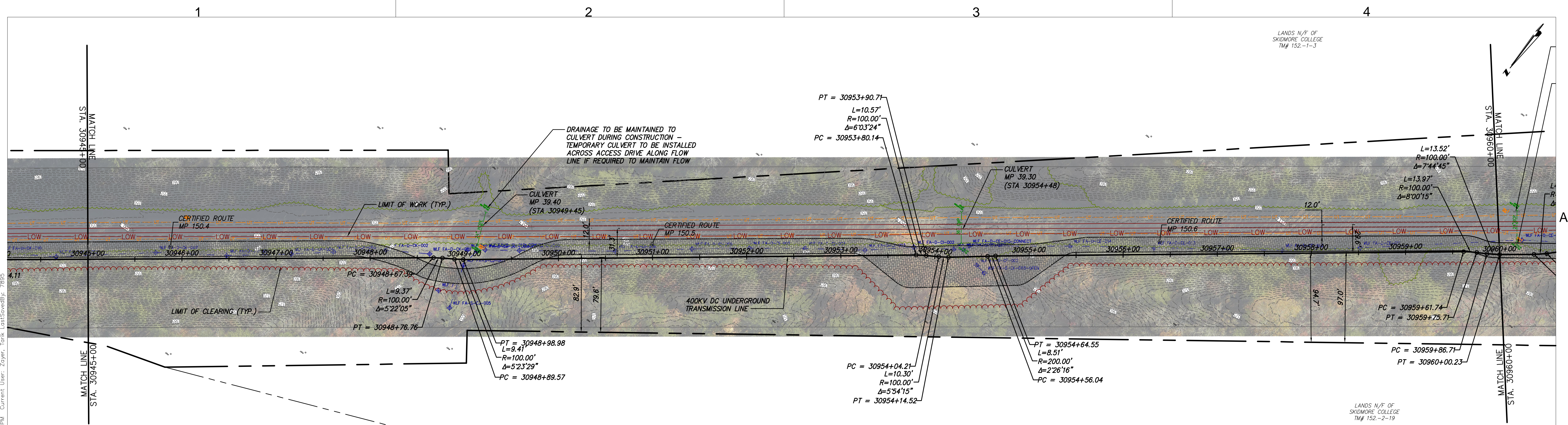
| No. | DATE | SUBMITTAL / REVISION DESCRIPTION | DB | APP |
|-----|------------|----------------------------------|-----|-----|
| 0 | 04/05/2023 | FINAL EM&CP SUBMISSION | JJE | JPR |

CHAMPLAIN HUDSON POWER EXPRESS
SEGMENTS 4 & 5 (PACKAGE 3) - CP: FORT EDWARD TO MILTON
STA. 30930+00 TO STA. 30945+00 PLAN AND PROFILE

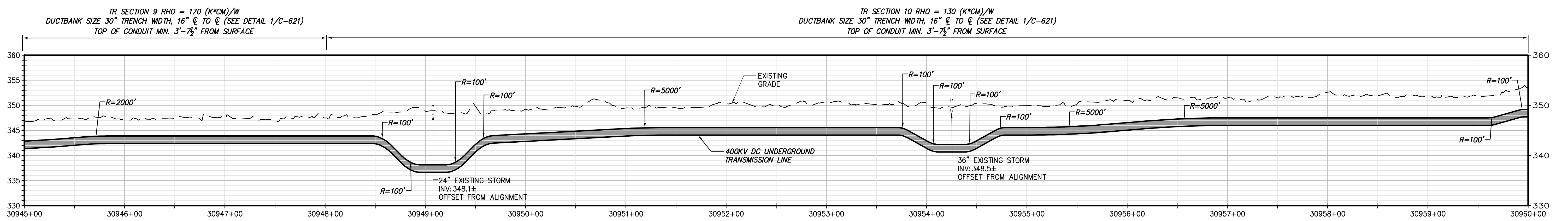
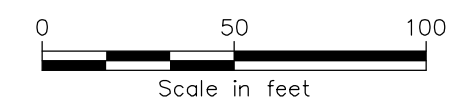
DRAWN BY: JJE DESIGNED BY: JTM APPROVED BY: JPR SCALE AS NOTED DATE 04/05/2023

| | |
|--------------------|------------|
| KIEWIT PROJECT NO. | 21162 |
| CHA PROJECT NO. | 086076 |
| DRAWING NO. | C-163 |
| DATE | 04/05/2023 |

File: V:\PROJECTS\ANY\6\086076\000\09_DESIGN\DRAWINGS\01_SHEETS\DESIGN PACKAGE 3\086076_P3 - C-161 - C-165.DWG Saved: 4/3/2023 4:41:13 PM Plotted: 4/4/2023 3:18:15 PM Current User: Zoyer, Torik LastSavedBy: 7895



STA. 30945+00 TO STA. 30960+00 PLAN VIEW
SCALE: 1" = 50'



STA. 30945+00 TO STA. 30960+00 PROFILE VIEW
SCALE: H:1" = 50' V:1" = 10'



IT IS A VIOLATION OF LAW FOR ANY PERSON, UNLESS THEY ARE ACTING UNDER THE DIRECTION OF A LICENSED PROFESSIONAL ENGINEER, ARCHITECT, LANDSCAPE ARCHITECT OR LAND SURVEYOR TO ALTER AN ITEM IN ANY WAY. IF AN ITEM BEARING THE STAMP OF A LICENSED PROFESSIONAL IS ALTERED, THE ALTERING ENGINEER, ARCHITECT, LANDSCAPE ARCHITECT OR LAND SURVEYOR SHALL STAMP THE DOCUMENT AND INCLUDE THE NOTATION "ALTERED BY" FOLLOWED BY THEIR SIGNATURE, THE DATE OF SUCH ALTERATION, AND A SPECIFIC DESCRIPTION OF THE ALTERATION.

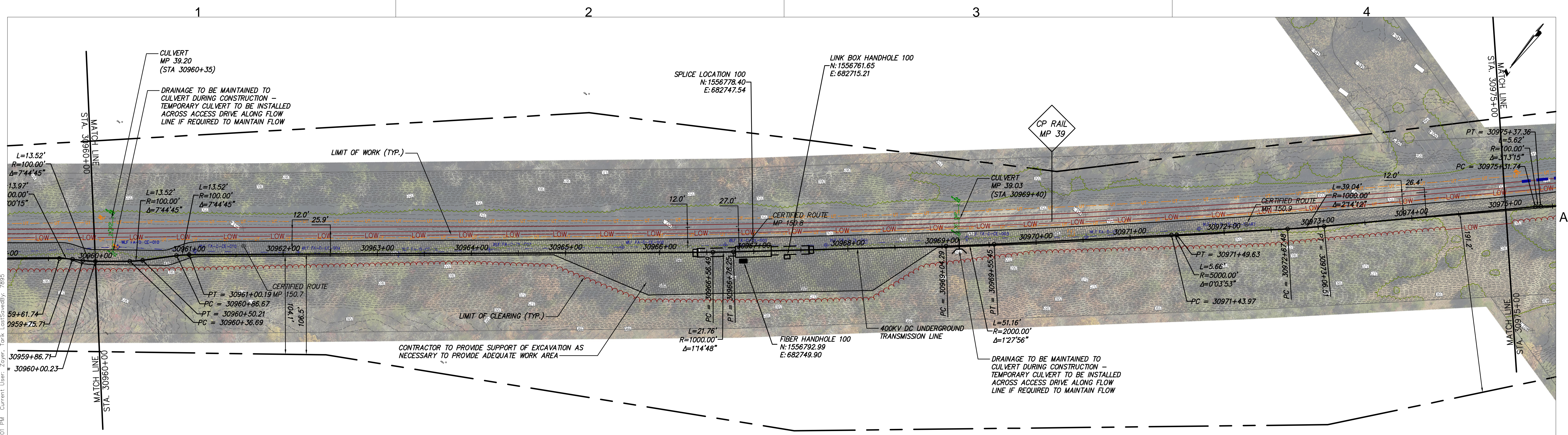
| No. | DATE | SUBMITTAL / REVISION DESCRIPTION | DB | APP |
|-----|------------|----------------------------------|-----|-----|
| 0 | 04/05/2023 | FINAL EM&CP SUBMISSION | JJE | JPR |

CHAMPLAIN HUDSON POWER EXPRESS
SEGMENTS 4 & 5 (PACKAGE 3) - CP: FORT EDWARD TO MILTON
STA. 30945+00 TO STA. 30960+00 PLAN AND PROFILE

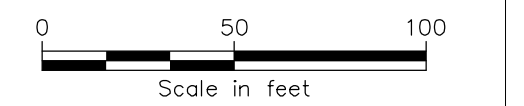
| | |
|--------------------|------------|
| KIEWIT PROJECT NO. | 21162 |
| CHA PROJECT NO. | 086076 |
| DRAWING NO. | C-164 |
| DATE | 04/05/2023 |

DRAWN BY: JJE DESIGNED BY: JTM APPROVED BY: JPR SCALE: AS NOTED DATE: 04/05/2023
REV. NO. X SH.NO.

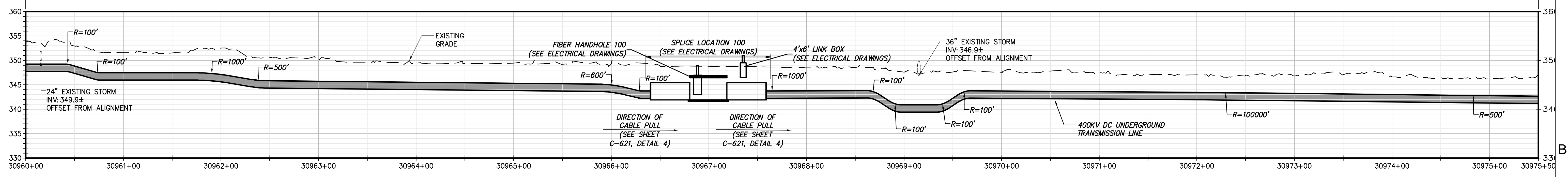
File: V:\PROJECTS\ANY\6\066076\00\09_DESIGN\DRAWINGS\01_SHEETS\DESIGN PACKAGE 3\066076_P3 - C-161 - C-165.DWG Saved: 4/3/2023 4:41:13 PM Plotted: 4/4/2023 3:19:29 PM Current User: Zayer, Torik LastSavedBy: 7895



STA. 30960+00 TO STA. 30975+00 PLAN VIEW
SCALE: 1" = 50'



TR SECTION 10 RHO = 130 (K*CM)/W
DUCTBANK SIZE 30" TRENCH WIDTH, 16" ϕ TO ϕ (SEE DETAIL 1/C-621)
TOP OF CONDUIT MIN. 3'-7 1/2" FROM SURFACE



STA. 30960+00 TO STA. 30975+00 PROFILE VIEW
SCALE: H: 1" = 50' V: 1" = 10'



IT IS A VIOLATION OF LAW FOR ANY PERSON, UNLESS THEY ARE ACTING UNDER THE DIRECTION OF A LICENSED PROFESSIONAL ENGINEER, ARCHITECT, LANDSCAPE ARCHITECT OR LAND SURVEYOR TO ALTER AN ITEM IN ANY WAY. IF AN ITEM BEARING THE STAMP OF A LICENSED PROFESSIONAL IS ALTERED, THE ALTERING ENGINEER, ARCHITECT, LANDSCAPE ARCHITECT OR LAND SURVEYOR SHALL STAMP THE DOCUMENT AND INCLUDE THE NOTATION "ALTERED BY" FOLLOWED BY THEIR SIGNATURE, THE DATE OF SUCH ALTERATION, AND A SPECIFIC DESCRIPTION OF THE ALTERATION.

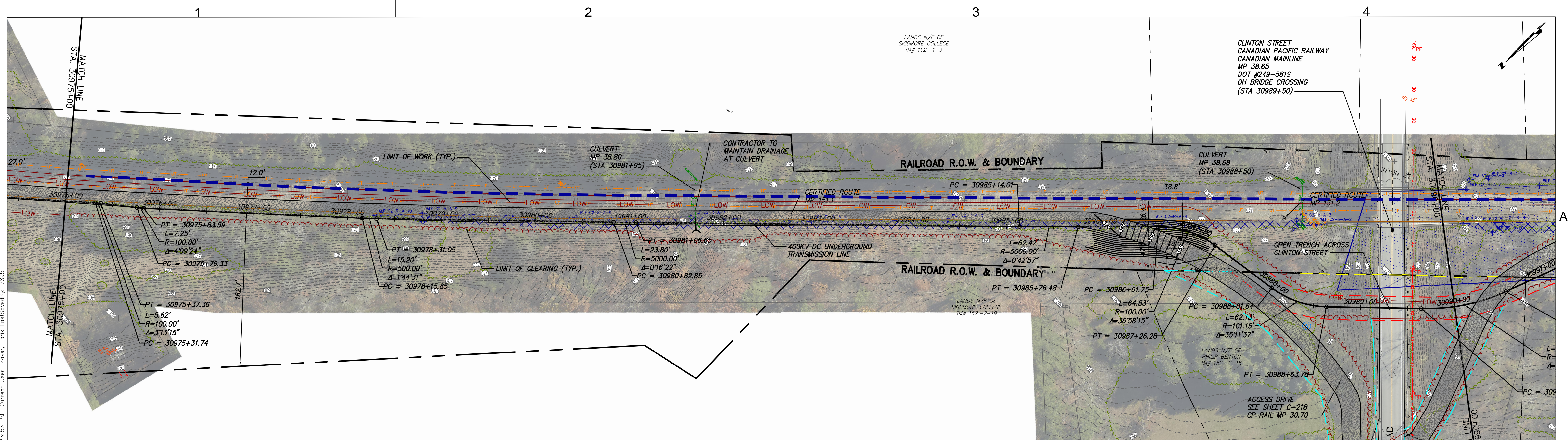
| No. | DATE | SUBMITTAL / REVISION DESCRIPTION | DB | APP |
|-----|------------|----------------------------------|-----|-----|
| 0 | 04/05/2023 | FINAL EM&CP SUBMISSION | JJE | JPR |

CHAMPLAIN HUDSON POWER EXPRESS
SEGMENTS 4 & 5 (PACKAGE 3) - CP: FORT EDWARD TO MILTON
STA. 30960+00 TO STA. 30975+00 PLAN AND PROFILE

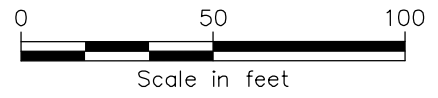
KIEWIT PROJECT NO. 21162
CHA PROJECT NO. 086076
DRAWING NO. C-165

DRAWN BY: JJE DESIGNED BY: JTM APPROVED BY: JPR SCALE: AS NOTED DATE: 04/05/2023
REV. NO. X SH.NO.

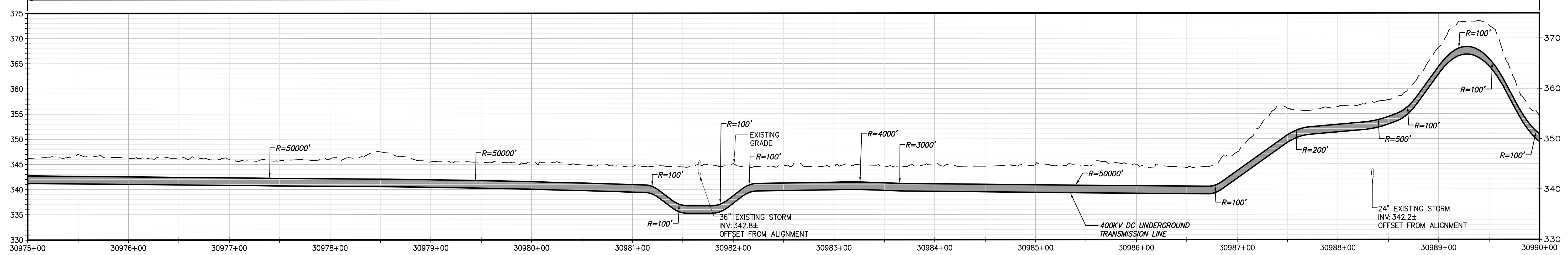
File: V:\PROJECTS\ANY\66076\000\09_DESIGN\DRAWINGS\01_SHEETS\DESIGN PACKAGE 3\06076_P3 - C-161 - C-165.DWG Saved: 4/3/2023 3:21:01 PM Plotted: 4/4/2023 4:41:13 PM Current User: Zoyer, Tarik LastSavedBy: 7895



STA. 30975+00 TO STA. 30990+00 PLAN VIEW
SCALE: 1" = 50'



TR SECTION 10 RHO = 130 (K*CM)/W
DUCTBANK SIZE 30" TRENCH WIDTH, 16" @ TO @ (SEE DETAIL 1/C-621)
TOP OF CONDUIT MIN. 3'-7 1/2" FROM SURFACE

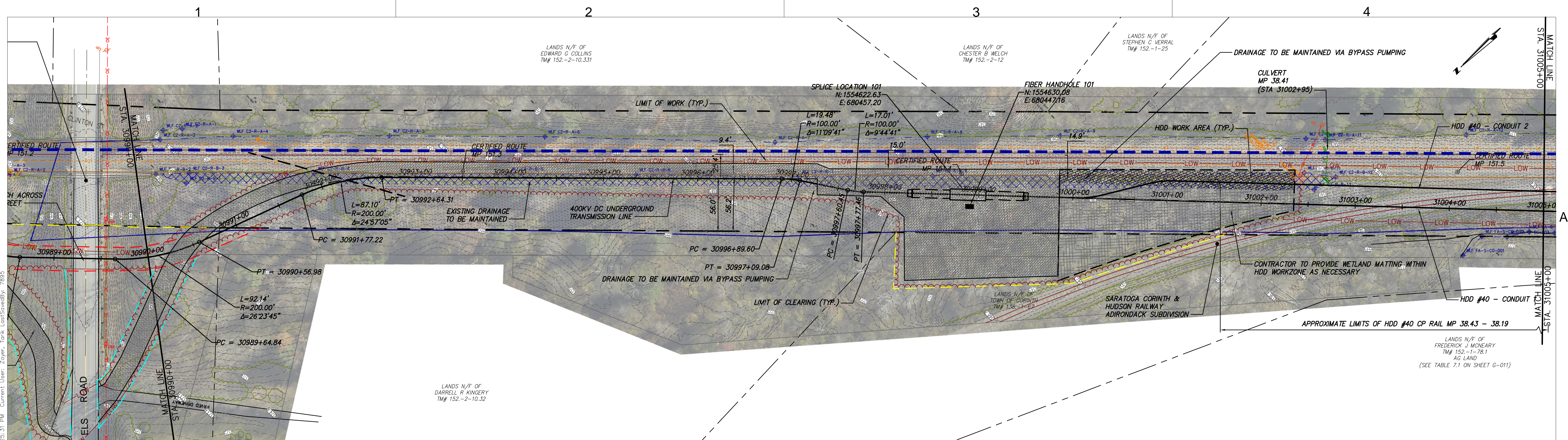


STA. 30975+00 TO STA. 30990+00 PROFILE VIEW
SCALE: H:1" = 50' V:1" = 10'

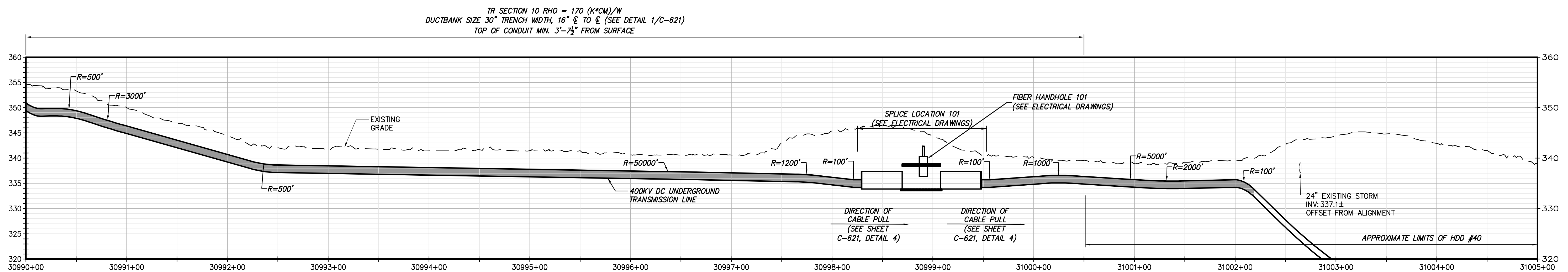
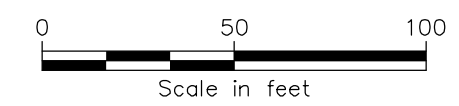


IT IS A VIOLATION OF LAW FOR ANY PERSON, UNLESS THEY ARE ACTING UNDER THE DIRECTION OF A LICENSED PROFESSIONAL ENGINEER, ARCHITECT, LANDSCAPE ARCHITECT OR LAND SURVEYOR TO ALTER AN ITEM IN ANY WAY. IF AN ITEM BEARING THE STAMP OF A LICENSED PROFESSIONAL IS ALTERED, THE ALTERING ENGINEER, ARCHITECT, LANDSCAPE ARCHITECT OR LAND SURVEYOR SHALL STAMP THE DOCUMENT AND INCLUDE THE NOTATION "ALTERED BY" FOLLOWED BY THEIR SIGNATURE, THE DATE OF SUCH ALTERATION, AND A SPECIFIC DESCRIPTION OF THE ALTERATION.

| | | | | | |
|---|------------|------------------------|-----|-----------------------------|------------|
| CHAMPLAIN HUDSON POWER EXPRESS SEGMENTS 4 & 5 (PACKAGE 3) - CP: FORT EDWARD TO MILTON STA. 30975+00 TO STA. 30990+00 PLAN AND PROFILE | | | | KIEWIT PROJECT NO. 21162 | |
| | | | | CHA PROJECT NO. 066076 | |
| | | | | DRAWING NO. C-166 | |
| DRAWN BY: JJE DESIGNED BY: JTM APPROVED BY: JPR | | | | SCALE | AS NOTED |
| DATE | | | | REV. NO. | DATE |
| SUBMITTAL / REVISION DESCRIPTION | | | | DB | SH.NO. |
| 0 | 04/05/2023 | FINAL EM&CP SUBMISSION | JJE | JPR | 04/05/2023 |



STA. 30990+00 TO STA. 31005+00 PLAN VIEW
SCALE: 1" = 50'



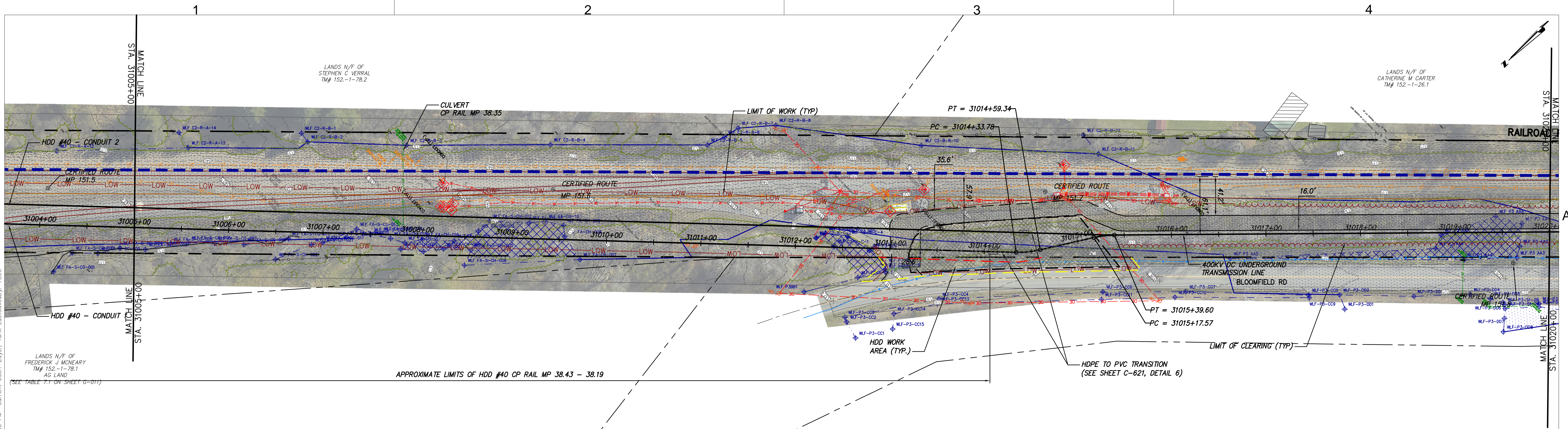
STA. 30990+00 TO STA. 31005+00 PROFILE VIEW
SCALE: H: 1" = 50' V: 1" = 10'

TR SECTION 10 RHO = 170 (K*CM)/W
DUCTBANK SIZE 30" TRENCH WIDTH, 16" ϕ TO ϕ (SEE DETAIL 1/C-621)
TOP OF CONDUIT MIN. 3'-7 1/2" FROM SURFACE

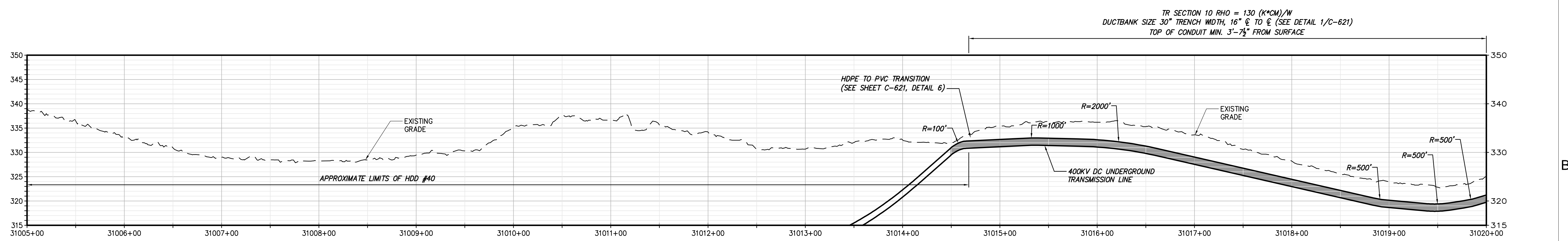
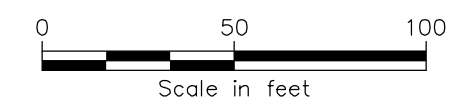


IT IS A VIOLATION OF LAW FOR ANY PERSON, UNLESS THEY ARE ACTING UNDER THE DIRECTION OF A LICENSED PROFESSIONAL ENGINEER, ARCHITECT, LANDSCAPE ARCHITECT OR LAND SURVEYOR TO ALTER AN ITEM IN ANY WAY. IF AN ITEM BEARING THE STAMP OF A LICENSED PROFESSIONAL IS ALTERED, THE ALTERING ENGINEER, ARCHITECT, LANDSCAPE ARCHITECT OR LAND SURVEYOR SHALL STAMP THE DOCUMENT AND INCLUDE THE NOTATION "ALTERED BY" FOLLOWED BY THEIR SIGNATURE, THE DATE OF SUCH ALTERATION, AND A SPECIFIC DESCRIPTION OF THE ALTERATION.

| | | | | | |
|---|------|----------------------------------|----------|-----------------------------|-------------|
| CHAMPLAIN HUDSON POWER EXPRESS SEGMENTS 4 & 5 (PACKAGE 3) - CP: FORT EDWARD TO MILTON STA. 30990+00 TO STA. 31005+00 PLAN AND PROFILE | | | | KIEWIT PROJECT NO. 21162 | |
| | | | | CHA PROJECT NO. 086076 | |
| | | | | DRAWING NO. C-167 | |
| 0 04/05/2023 FINAL EM&CP SUBMISSION | | JJE JPR | | DATE 04/05/2023 | |
| No. | DATE | SUBMITTAL / REVISION DESCRIPTION | DB | APP | DATE SH.NO. |
| DRAWN BY: JJE DESIGNED BY: JTM APPROVED BY: JPR | | | SCALE | AS NOTED | |
| | | | REV. NO. | X | |



STA. 31005+00 TO STA. 31020+00 PLAN VIEW
SCALE: 1" = 50'



STA. 31005+00 TO STA. 31020+00 PROFILE VIEW
SCALE: H:1" = 50' V:1" = 10'



IT IS A VIOLATION OF LAW FOR ANY PERSON, UNLESS THEY ARE ACTING UNDER THE DIRECTION OF A LICENSED PROFESSIONAL ENGINEER, ARCHITECT, LANDSCAPE ARCHITECT OR LAND SURVEYOR TO ALTER AN ITEM IN ANY WAY. IF AN ITEM BEARING THE STAMP OF A LICENSED PROFESSIONAL IS ALTERED, THE ALTERING ENGINEER, ARCHITECT, LANDSCAPE ARCHITECT OR LAND SURVEYOR SHALL STAMP THE DOCUMENT AND INCLUDE THE NOTATION "ALTERED BY" FOLLOWED BY THEIR SIGNATURE, THE DATE OF SUCH ALTERATION, AND A SPECIFIC DESCRIPTION OF THE ALTERATION.

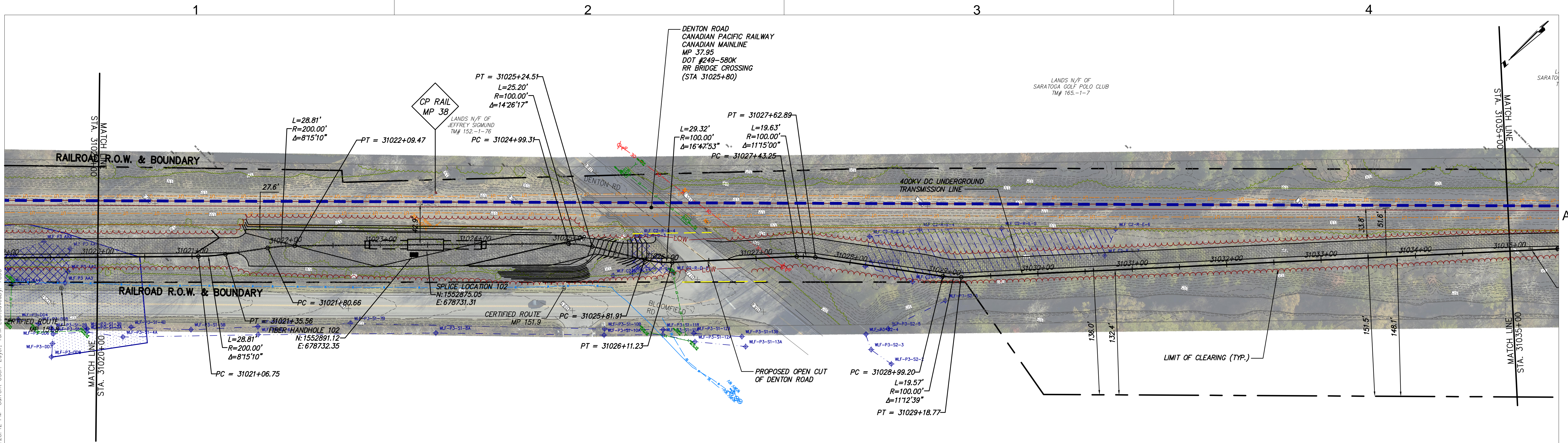
| No. | DATE | SUBMITTAL / REVISION DESCRIPTION | DB | APP |
|-----|------------|----------------------------------|-----|-----|
| 0 | 04/05/2023 | FINAL EM&CP SUBMISSION | JJE | JPR |

CHAMPLAIN HUDSON POWER EXPRESS
SEGMENTS 4 & 5 (PACKAGE 3) - CP: FORT EDWARD TO MILTON
STA. 31005+00 TO STA. 31020+00 PLAN AND PROFILE

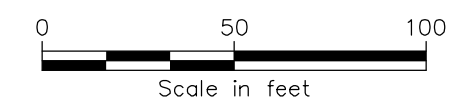
KIEWIT PROJECT NO. 21162
CHA PROJECT NO. 086076
DRAWING NO. C-168

DRAWN BY: JJE DESIGNED BY: JTM APPROVED BY: JPR SCALE AS NOTED DATE 04/05/2023
REV. NO. X SH.NO.

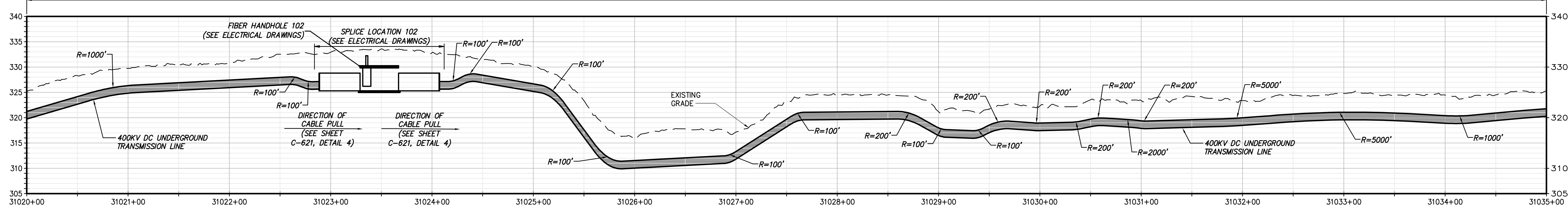
File: V:\PROJECTS\ANY\666076\00\09_DESIGN\DRAWINGS\01_SHEETS\DESIGN PACKAGE 3\066076_P3 - C-168 - C-170.DWG Saved: 4/3/2023 4:24:49 PM Plotted: 4/4/2023 3:27:05 PM Current User: Zoyer, Tank Last Saved By: 7895



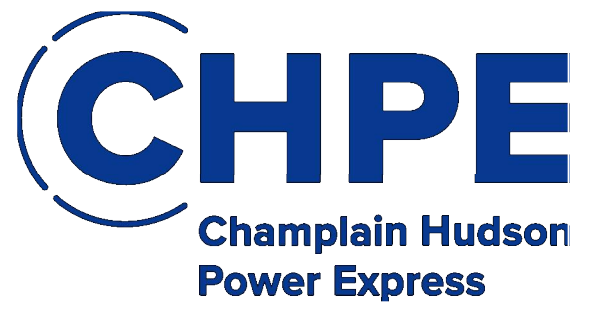
STA. 31020+00 TO STA. 31035+00 PLAN VIEW
SCALE: 1" = 50'



TR SECTION 10 RHO = 130 (K*CM)/W
DUCTBANK SIZE 30" TRENCH WIDTH, 16" ϕ TO ϕ (SEE DETAIL 1/C-621)
TOP OF CONDUIT MIN. 3'-7 1/2" FROM SURFACE

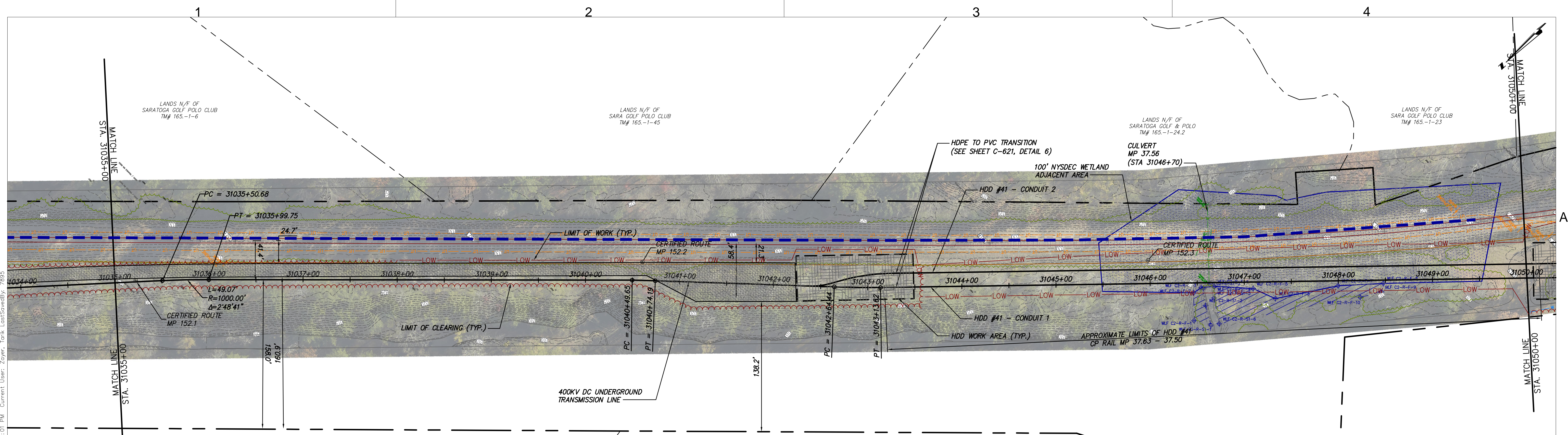


STA. 31020+00 TO STA. 31035+00 PROFILE VIEW
SCALE: H:1" = 50' V:1" = 10'

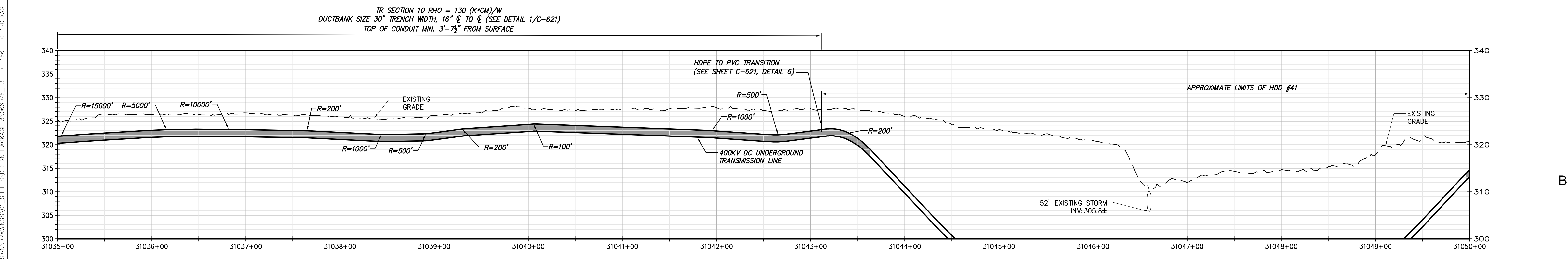
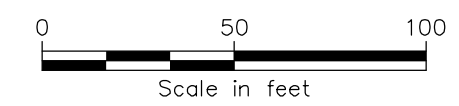


IT IS A VIOLATION OF LAW FOR ANY PERSON, UNLESS THEY ARE ACTING UNDER THE DIRECTION OF A LICENSED PROFESSIONAL ENGINEER, ARCHITECT, LANDSCAPE ARCHITECT OR LAND SURVEYOR TO ALTER AN ITEM IN ANY WAY. IF AN ITEM BEARING THE STAMP OF A LICENSED PROFESSIONAL IS ALTERED, THE ALTERING ENGINEER, ARCHITECT, LANDSCAPE ARCHITECT OR LAND SURVEYOR SHALL STAMP THE DOCUMENT AND INCLUDE THE NOTATION "ALTERED BY" FOLLOWED BY THEIR SIGNATURE, THE DATE OF SUCH ALTERATION, AND A SPECIFIC DESCRIPTION OF THE ALTERATION.

| | | | | | |
|---|------------|----------------------------------|------------------|-----------------------------|------------------------------|
| CHAMPLAIN HUDSON POWER EXPRESS SEGMENTS 4 & 5 (PACKAGE 3) - CP: FORT EDWARD TO MILTON STA. 31020+00 TO STA. 31035+00 PLAN AND PROFILE | | | | KIEWIT PROJECT NO. 21162 | |
| | | | | CHA PROJECT NO. 086076 | |
| | | | | DRAWING NO. C-169 | |
| | | | | DATE 04/05/2023 | |
| No. | DATE | SUBMITTAL / REVISION DESCRIPTION | DB | APP | SCALE AS NOTED REV. NO. X |
| 0 | 04/05/2023 | FINAL EM&CP SUBMISSION | JJE | JPR | |
| DRAWN BY: JJE | | | DESIGNED BY: JTM | | APPROVED BY: JPR |



STA. 31035+00 TO STA. 31050+00 PLAN VIEW
SCALE: 1" = 50'



STA. 31035+00 TO STA. 31050+00 PROFILE VIEW
SCALE: H:1" = 50' V:1" = 10'



IT IS A VIOLATION OF LAW FOR ANY PERSON, UNLESS THEY ARE ACTING UNDER THE DIRECTION OF A LICENSED PROFESSIONAL ENGINEER, ARCHITECT, LANDSCAPE ARCHITECT OR LAND SURVEYOR TO ALTER AN ITEM IN ANY WAY. IF AN ITEM BEARING THE STAMP OF A LICENSED PROFESSIONAL IS ALTERED, THE ALTERING ENGINEER, ARCHITECT, LANDSCAPE ARCHITECT OR LAND SURVEYOR SHALL STAMP THE DOCUMENT AND INCLUDE THE NOTATION "ALTERED BY" FOLLOWED BY THEIR SIGNATURE, THE DATE OF SUCH ALTERATION, AND A SPECIFIC DESCRIPTION OF THE ALTERATION.

| No. | DATE | SUBMITTAL / REVISION DESCRIPTION | DB | APP |
|-----|------------|----------------------------------|-----|-----|
| 0 | 04/05/2023 | FINAL EM&CP SUBMISSION | JJE | JPR |

CHAMPLAIN HUDSON POWER EXPRESS
SEGMENTS 4 & 5 (PACKAGE 3) - CP: FORT EDWARD TO MILTON
STA. 31035+00 TO STA. 31050+00 PLAN AND PROFILE

DRAWN BY: JJE DESIGNED BY: JTM APPROVED BY: JPR SCALE AS NOTED DATE 04/05/2023

| | |
|--------------------|------------|
| KIEWIT PROJECT NO. | 21162 |
| CHA PROJECT NO. | 086076 |
| DRAWING NO. | C-170 |
| DATE | 04/05/2023 |

File: V:\PROJECTS\ANY\6\086076\000\09_DESIGN\DRAWINGS\01_SHEETS\DESIGN PACKAGE 3\086076_P3 - C-166 - C-170.DWG Saved: 4/3/2023 4:24:49 PM Plotted: 4/4/2023 3:30:01 PM Current User: Zoyer, Tank Last Saved By: 7895