



Appendix B: EM&CP Filing Notices

NOTICE OF SUBMISSION OF ENVIRONMENTAL MANAGEMENT AND CONSTRUCTION PLAN FOR CHAMPLAIN HUDSON POWER EXPRESS

Please take notice that, on or about April 4, 2023, CHPE LLC and CHPE Properties, Inc. (collectively referred to as “CHPE”) intend to submit an Environmental Management & Construction Plan (“EM&CPs”) for the Lake Champlain Pre-Lay Mattressing Segment of the proposed Champlain Hudson Power Express (“CHPE”) Project, including a potential amendment to the Certificate to adjust a portion of the approved route to avoid and minimize environmental impacts. The Lake Champlain Pre-Lay Mattressing Segment EM&CP includes installation of concrete articulated mattresses on the bed of the lake to protect co-located submarine infrastructure (such as buried telecommunications, electrical or gas lines placed on or beneath the bed of Lake Champlain) in preparation for future submarine cable installation in Lake Champlain. A later EM&CP Segment will be submitted that will detail the procedures to be implemented during installation of the submarine cable in Lake Champlain later in 2023.

On April 18, 2013, the NYS Public Service Commission (Commission) issued to CHPE a certificate of environmental compatibility and public need (Certificate), pursuant to Article VII of the Public Service Law (PSL), to construct and operate the CHPE Project. The Certificate requires that, prior to construction of any portion of the Project, CHPE submit an EM&CP for review and comment.

Details of the planned work locations, including an overview map of the proposed route, is available on the Project website at: <https://chpexpress.com/overview-of-public-documents/environmental-management-construction-plan/>. In general, construction activities for this Segment are anticipated to commence in the summer of 2023. Construction will generally occur during daylight hours, though some limited activities which require continuous operations could extend to later hours.

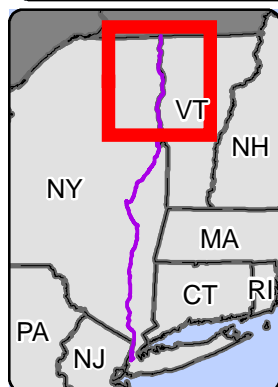
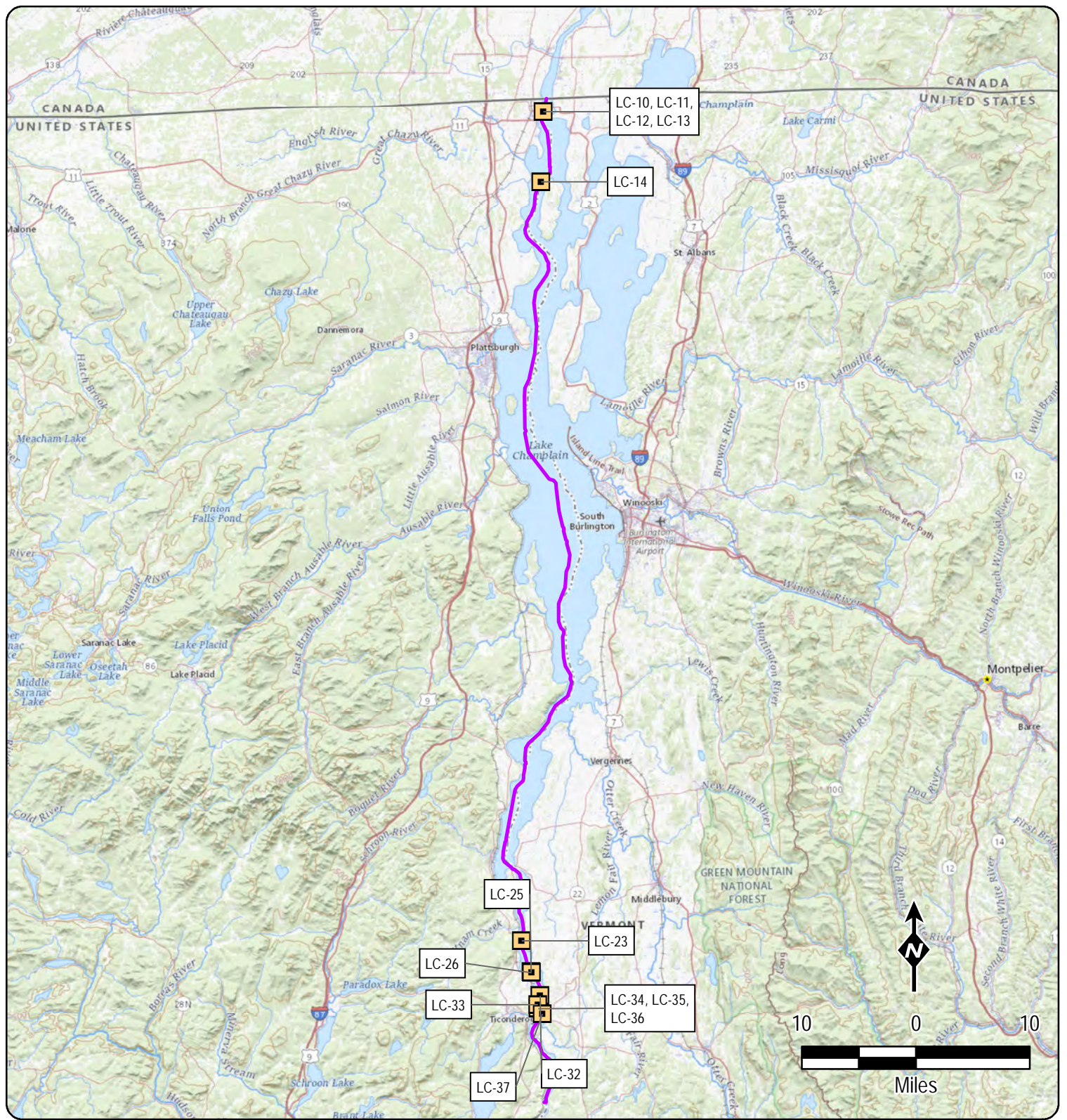
The EM&CP provides detailed information regarding how this Segment of the Project will be constructed, the specific locations of the proposed mattress installations, Construction Zones, and temporary work areas, as well as descriptions of work to be performed, plan and profile drawings depicting the Project, and protocols to be used during construction to protect the community and the environment, and to comply with the CHPE Certificate. The EM&CP must be reviewed and approved by the PSC before construction on this Segment can begin.

The full Commission docket for the Project can be accessed via the Commission’s website at: <http://documents.dps.ny.gov/public/MatterManagement/CaseMaster.aspx?MatterCaseNo=10-T-0139> and electronic copies of EM&CP documents also will be available on the Project website at <https://chpexpress.com/overview-of-public-documents/environmental-management-construction-plan/>. Paper copies of the Segment EM&CP submissions will be available for viewing at the following local document repositories: Plattsburgh Public Library, 19 Oak St., Plattsburgh, NY 12901 and Black Watch Memorial Library 99 Montcalm St., Ticonderoga, NY 12883.


Comments related to this proposed EM&CP should be submitted to the Commission Secretary by email at secretary@dps.ny.gov or by mail to Michelle Phillips, Secretary, NYS Public

Service Commission, 3 Empire State Plaza, Albany, NY, 12223, within 30 days of the EM&CP segment's filing with the Commission. All comments should reference Case Number 10-T-0139.

CHPE has established a toll-free number for questions regarding the Project: 1-800-991-CHPE (2473). Questions or requests for further information can be directed to: publicoutreach@chpexpress.com or by mail to Molly Hollister, WSP USA, One Pennsylvania Plaza, New York, New York 10119.



Pre-Lay Concrete Mattress Protection Location
 Route


 CHAMPLAIN HUDSON POWER EXPRESS
 Lake Champlain Pre-Lay
 Mattress Utility Protection EM&CP
 Figure 1
 Created: 4/3/2023



c/o Transmission Developers
600 Broadway
Albany, NY 12207

Notice of Submission of Lake Champlain Pre-Lay Mattressing EM&CP For the Champlain Hudson Power Express Project

Dear Stakeholder,

On or about April 4, 2023, CHPE, LLC and its wholly-owned subsidiary, CHPE Properties, Inc. (collectively referred to as “CHPE”) intend to submit Environmental Management & Construction Plans (“EM&CPs”) for the Lake Champlain Pre-Lay Mattressing Segment of the proposed Champlain Hudson Power Express (“CHPE”) Project, including a potential amendment to the Certificate to adjust a portion of the approved route to avoid and minimize environmental impacts. The Lake Champlain Pre-Lay Mattressing Segment EM&CP includes installation of concrete articulated mattresses on the bed of the lake to protect co-located submarine infrastructure (such as buried telecommunications, electrical or gas lines placed on or beneath the bed of Lake Champlain) in preparation for future submarine cable installation in Lake Champlain. A later EM&CP Segment will be submitted that will detail the procedures to be implemented during installation of the submarine cable in Lake Champlain later in 2023.

The New York State Public Service Commission (“PSC”) issued a Certificate of Environmental Compatibility and Public Need (“Certificate”) to CHPE on April 18, 2013 to construct and operate the CHPE Project. Pursuant to that Certificate, CHPE is required to circulate notices to certain landowners, utility owners, municipalities and agencies near the proposed Segment locations indicating that the EM&CPs will be filed and providing links and contact information which stakeholders can use to obtain further information or to submit comments.

The EM&CP provides detailed information regarding how this Segment of the Project will be constructed, the specific locations of the proposed permanent right-of-way, Construction Zones, and temporary work areas, as well as descriptions of work to be performed, plan and profile drawings depicting the Project, and protocols to be used during construction to protect the community and the environment, and to comply with the CHPE Certificate. The EM&CP must be reviewed and approved by the PSC before construction on the Segment can begin.

An overview map of the proposed Segment locations accompanies this notice. Further details of the planned work locations will be made available on the Project website at: <https://chpexpress.com/overview-of-public-documents/environmental-management-construction-plan/>. In general, construction activities for this Segment are anticipated to commence in the summer of 2023. Construction will generally occur during daylight hours, though some limited activities which require continuous operations could extend to later hours.

Contact Information and Document Repositories

CHPE has established a toll-free number for questions regarding the Project: 1-800-991-CHPE (2473). Questions or requests for further information can be directed to publicoutreach@chpexpress.com or by mail to Molly Hollister, WSP USA, One Pennsylvania Plaza, New York, New York 10119.



c/o Transmission Developers
600 Broadway
Albany, NY 12207

The EM&CP documents will be available on the PSC's website at <http://documents.dps.ny.gov/public/MatterManagement/CaseMaster.aspx?MatterCaseNo=10-T-0139> and on the Project website <https://chpexpress.com/overview-of-public-documents/environmental-management-construction-plan/> once they are filed.

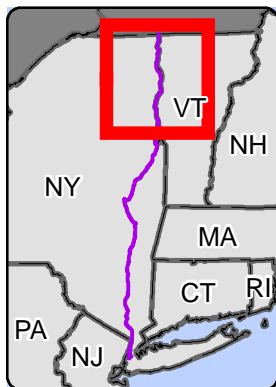
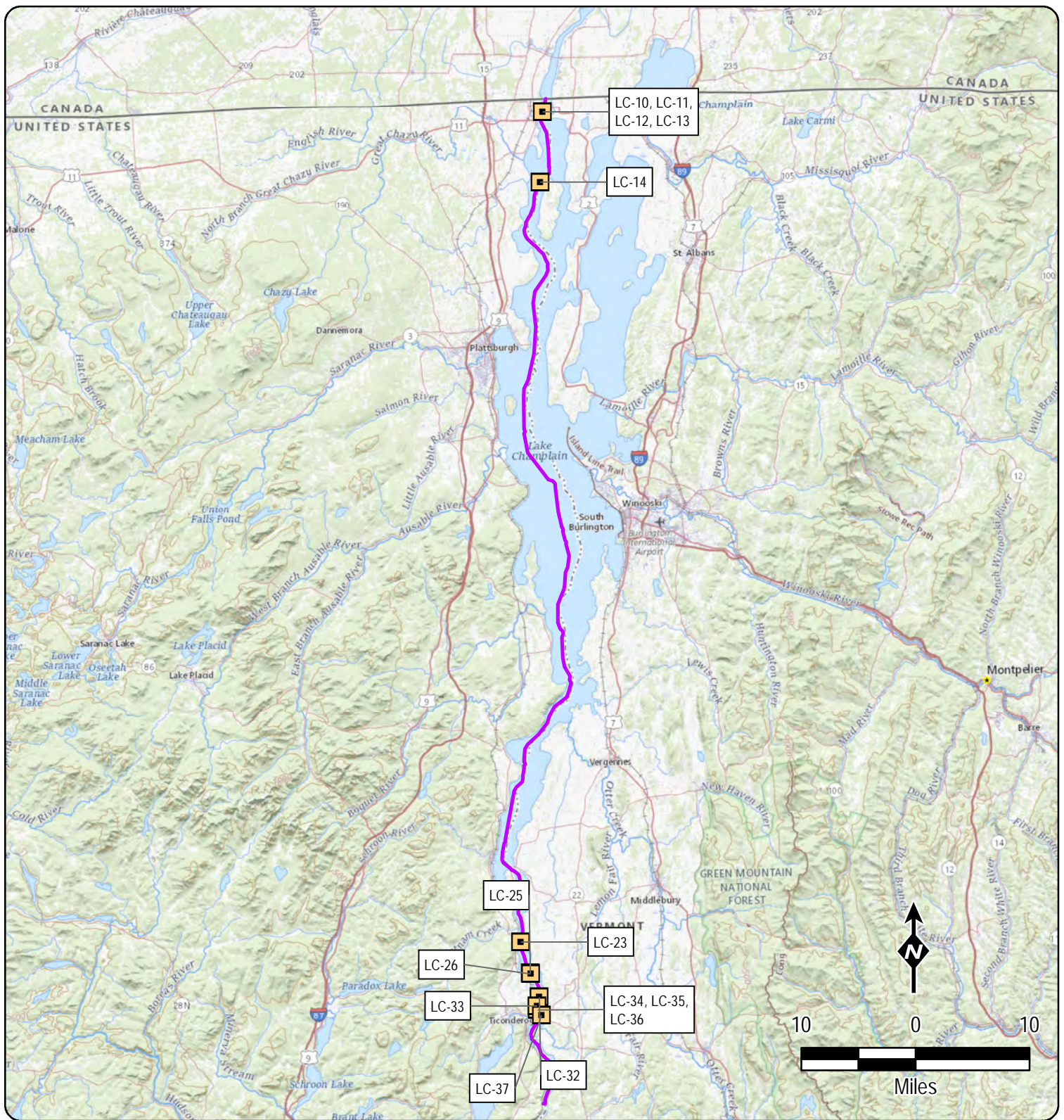
Paper copies of the Segment EM&CP submissions will be available for viewing at the following local document repositories: Plattsburgh Public Library, 19 Oak St., Plattsburgh, NY 12901 and Black Watch Memorial Library 99 Montcalm St., Ticonderoga, NY 12883.

Filing Comments


Any person wishing to be heard by the Commission on any matter related to the proposed EM&CPs may file written comments with the Commission Secretary by email at secretary@dps.ny.gov or by mail to Michelle Phillips, Secretary, NYS Public Service Commission, 3 Empire State Plaza, Albany, NY, 12223, within 30 days of the EM&CP segment's filing with the Commission. All comments should reference Case Number 10-T-0139.

Yours truly,

Josh Bagnato
Vice President, Development



■ Pre-Lay Concrete Mattress Protection Location
— Route


 CHAMPLAIN HUDSON POWER EXPRESS
 Lake Champlain Pre-Lay
 Mattress Utility Protection EM&CP
 Figure 1
 Created: 4/3/2023