

## **NOTICE OF THE START OF CONSTRUCTION FOR PUTNAM STATION HDD SEGMENT OF THE CHAMPLAIN HUDSON POWER EXPRESS PROJECT**

On or about May 9, 2023, the Champlain Hudson Power Express Project (“CHPE”) intends to begin site preparation and construction on the Putnam Station Horizontal Directional Drill (HDD) to connect terrestrial and marine Segments of the Project in the Town of Putnam, Washington County. This installation will be supported by a laydown yard to be utilized during the construction of the CHPE Project for construction staging, marshalling and storage to support construction work. The initial construction work will involve preparation of the site, followed by installation of the HDD. Work activities described above will generally occur during daylight hours to the extent practicable, except where technology requires uninterrupted operations.

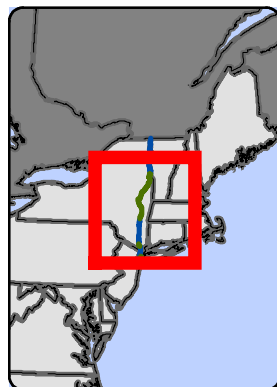
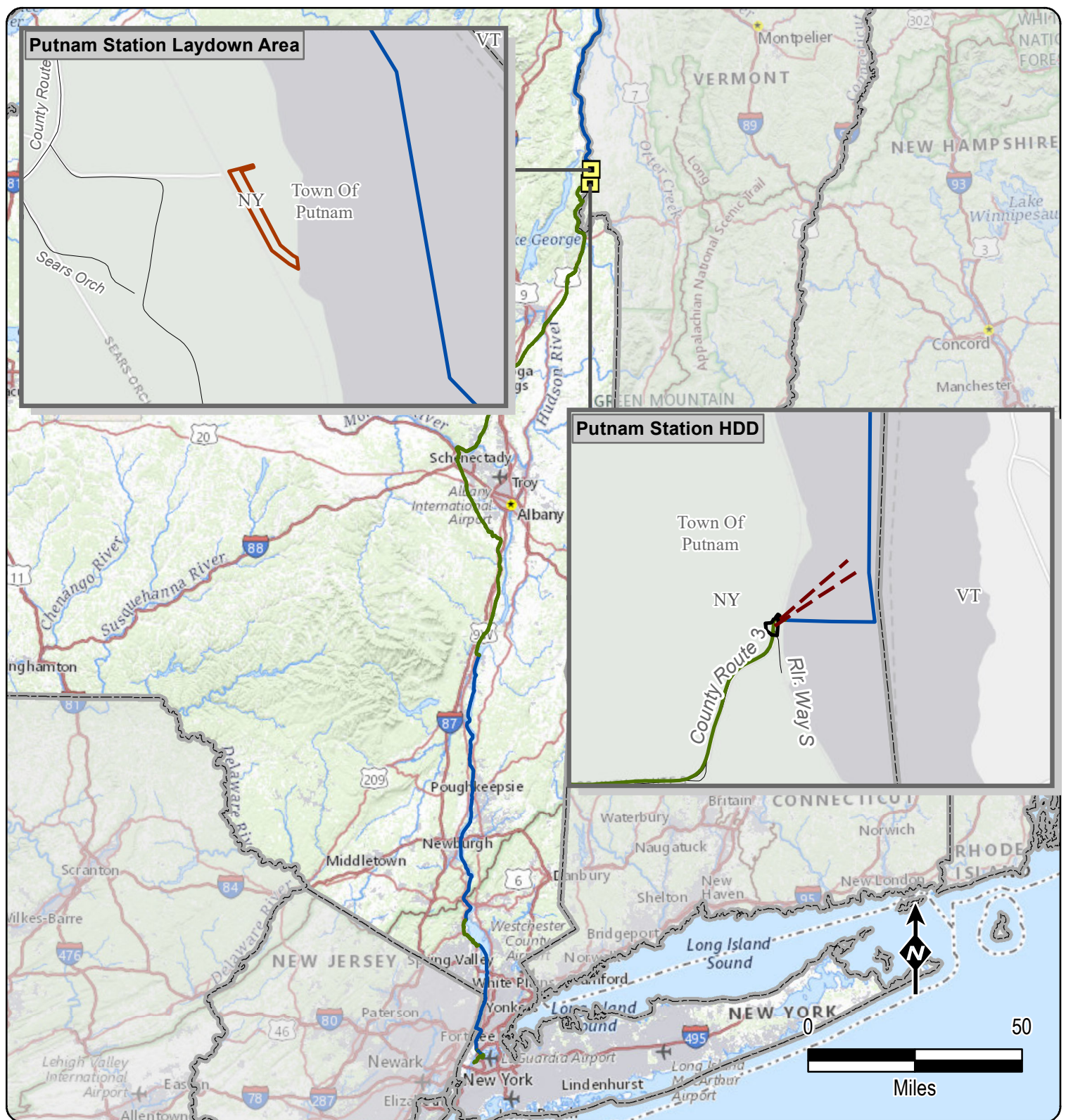
On April 20, 2023, the New York State Public Service Commission approved CHPE’s Environmental Management & Construction Plan (“EM&CP”) for the Project’s Three Transitional HDD Segment. Upon receipt of a Notice to Proceed with Construction letter sent by the New York State Department of Public Service’s Office of Electric, Gas and Water, CHPE will be authorized to commence construction activities for the approved laydown yards.

CHPE has established a toll-free number for questions regarding the Project, including a complaint resolution plan for issues arising during construction: 1-800-991-CHPE (2473). Questions or requests for further information can be directed to: [publicoutreach@chpexpress.com](mailto:publicoutreach@chpexpress.com) or by mail to Molly Hollister, WSP USA, One Pennsylvania Plaza, New York, New York 10119.

Facility construction falls under the jurisdiction of the Commission, which is responsible for enforcing compliance with environmental and construction conditions, and which may be contacted through Matthew Smith, Office of Electric, Gas and Water, New York State Department of Public Service, Three Empire State Plaza, Albany, NY 12223, via telephone at (518)474-8702 or email at [matthew.smith@dps.ny.gov](mailto:matthew.smith@dps.ny.gov).

Details of the planned work locations, including construction drawings showing in detail the approved Segment, are available on the Project website at: <https://chpexpress.com/overview-of-public-documents/environmental-management-construction-plan/>. The full Commission docket for the Project can be accessed via the Commission’s website at: <http://documents.dps.ny.gov/public/MatterManagement/CaseMaster.aspx?MatterCaseNo=10-T-0139>.

Paper copies of the EM&CP are available for viewing at the following local document repository: Black Watch Memorial Library in Ticonderoga, 99 Montcalm St., Ticonderoga, NY 12883.



- HDD / Laydown Area Location
- Submarine Route
- Terrestrial Route



CHAMPLAIN HUDSON POWER EXPRESS

Overview of Putnam Station  
Transitional HDD Location

Figure 1

Created: 4/18/2023