

NOTICE OF THE START OF CONSTRUCTION FOR TEMPORARY LAYDOWN YARD SEGMENT OF THE CHAMPLAIN HUDSON POWER EXPRESS PROJECT

The Champlain Hudson Power Express Project (“CHPE”) intends to begin site preparation and construction on three Temporary Laydown Yards to be used during construction on the following schedule: on or about March 20, 2023 for the Fort Edward (Washington County) Laydown Yard, and on or about March 27, 2023 for the Bethlehem (Albany County) and Coxsackie/Athens (Greene County) Laydown Yards. These Laydown Yards will be utilized during the construction of the CHPE Project for construction staging, marshalling and storage to support construction work. The initial construction work will involve preparation of the sites and, if necessary in limited cases, clearing of trees and vegetation, followed by construction of the remainder of the laydown yards. Work activities described above will generally occur during daylight hours to the extent practicable and may overlap across the Project to maintain efficiency and keep disturbance to a minimum.

On February 21, 2023, the New York State Public Service Commission approved CHPE’s Environmental Management & Construction Plan (“EM&CP”) for the Project’s Temporary Laydown Yards Segment. Upon receipt of a Notice to Proceed with Construction letter sent by the New York State Department of Public Service’s Office of Electric, Gas and Water, CHPE will be authorized to commence construction activities for the approved laydown yards.

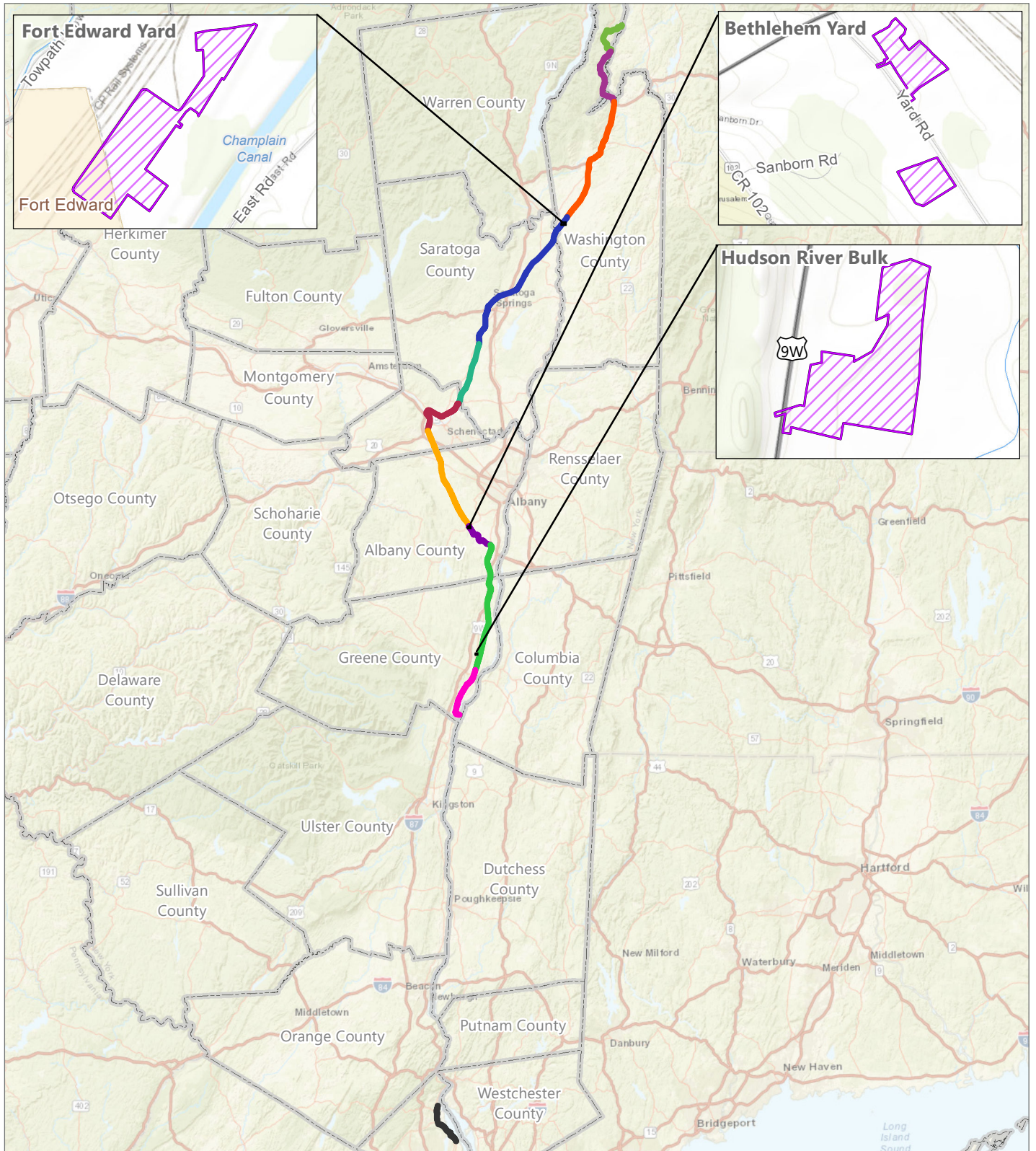
CHPE has established a toll-free number for questions regarding the Project, including a complaint resolution plan for issues arising during construction: 1-800-991-CHPE (2473). Questions or requests for further information can be directed to: publicoutreach@chpexpress.com or by mail to Molly Hollister, WSP USA, One Pennsylvania Plaza, New York, New York 10119.

Facility construction falls under the jurisdiction of the Commission, which is responsible for enforcing compliance with environmental and construction conditions, and which may be contacted through Matthew Smith, Office of Electric, Gas and Water, New York State Department of Public Service, Three Empire State Plaza, Albany, NY 12223, via telephone at (518)474-8702 or email at matthew.smith@dps.ny.gov.

Details of the planned work locations, including construction drawings showing in detail the approved Segment, are available on the Project website at: <https://chpexpress.com/overview-of-public-documents/environmental-management-construction-plan/>. The full Commission docket for the Project can be accessed via the Commission’s website at: <http://documents.dps.ny.gov/public/MatterManagement/CaseMaster.aspx?MatterCaseNo=10-T-0139>.

Paper copies of the EM&CP for the Temporary Laydown Yards are available for viewing at the following local document repositories: Fort Edward Free Library, 23 East St, Fort Edward, NY 12828; Bethlehem Public Library, 451 Delaware Ave, Delmar, NY 12054; and D.R. Evarts Library, 80 Second Street, Athens, NY 12015.

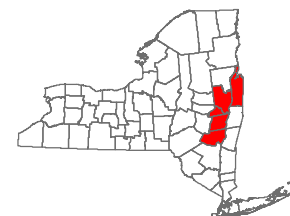
Figure 1. CHPE EM&CP Laydown Yards



CHPE EM&CP

Washington, Saratoga, Schenectady,
Albany, Greene and Rockland Counties,
New York

- CHPE EM&CP Filing Package
- Segment 1
 - Segment 2
 - Segment 3
 - Segment 4 & 5
 - Segment 6
 - Segment 7
 - Segment 8
 - Segment 9
 - Segment 10
 - Segment 11
 - Segment 12
 - Laydown Yard



0 2.5 5 10
Miles