

## **Appendix P. Phase IA Archaeological Assessment of the Tomkins Cove Laydown Area**



P.O. Box 1068  
Bath, ME 04530

## **Phase IA Archaeological Assessment of the Tomkins Cove Laydown Area for the Champlain Hudson Power Express Project, Stony Point, Rockland County (OPRHP 09PR03910)**

**To:** Michael Stoltzfus, Principal Consultant, TRC, Lowell, MA

**From:** Karen E. Mack, Principal Investigator, TRC Bath, ME

**Subject:** Phase IA Archaeological Assessment of the Tomkins Cove Laydown Area for the Champlain Hudson Power Express Project, Stony Point, Rockland County (OPRHP 09PR03910)

**Date:** December 9, 2022

---

### **Project Description**

The Champlain Hudson Power Express (CHPE) project is an approximately 330-mile submarine and terrestrial High Voltage Direct Current (HVDC) transmission project that will connect clean power generated in Canada with New York City. As part of this project CHPE, LLC is proposing to construct the Stony Point Horizontal Directional Drill (HDD) to facilitate installing the cables from the Hudson River into the Town of Stony Point in Rockland County, New York. (Figure 1). The Tomkins Cove Laydown Area will be located on a parcel of land located on the west side of the Hudson River immediately north of the Tomkins Cove Quarry where a power plant and substation were located but have been demolished (Figures 2a and 2b). The area of potential effect (APE) for the laydown area will cover approximately 17.8 acres (Figure 2 and Attached Project Plans). This area was not included in previous Phase IA assessments completed for the CHPE Project (Larlee and Will, 2020).

TRC completed an updated Phase IA assessment of the Tomkins Cove Laydown Area APE using soils data, historic map and aerial images, and a review of data available on the National Park Service (NPS), National Register of Historic Places (NRHP), and the Office of Parks Recreation and Historic Preservation (OPRHP) Cultural Resource Information System (CRIS) websites. The results of this assessment are presented here.

The Natural Resource Conservation Service (NRCS) has identified (2) soil units within the Project APE: Charlton-Rock outcrop complex, hilly, 10-30% slopes (CkD) and Urban land (Ux) (<http://websoilsurvey.sc.egov.usda.gov>). Urban land accounts for the vast majority of the APE. A review of historic USGS topographic maps shows the portion of the APE located on the east side of the railroad tracks is artificial land that was built between 1934 and 1936. Since its construction this landform has been used for a variety of purposes. A review of historic aerials shows the power plant and substation that occupied the landform since the 1950s and their expansion by the 1980s and its eventual removal by 2010 (see Photos 1 – 6).

### **Known Archaeological Resources near the Project Area**

No New York State Historic Office (NYSHPO) inventoried archaeological sites are located within or near the Project APE. However, two New York State Museum (NYSM) archaeological areas overlap the Project APE (Table 1). NYSM Area 7817 was recorded Arthur C. Parker in 1922 as having traces of Precontact period materials and NYSM Area 7922 was recorded by Max Schrabisch as a Precontact period camp in 1936. Both refer to the area prior to the modifications to the shoreline that took place in the late 1930s.

Two additional sites, one associated with the Precontact period and the other associated with the Historic period exist within 1 km of the Project APE (see Table 1).

Table 1. Archaeological sites located within 1 km of the Project.

OPRHP # or NYSM LP Site#	Name	Distance to APE	Period(s)	NRHP Status
08705.000077	Hudson River Find Spot 1	0.8 km north	Precontact	Undetermined
08705.000100	Fresh Air House of St. John the Devine	0.4 km northwest	Historic – mid-19 <sup>th</sup> to late 20 <sup>th</sup> c.	Eligible
NYSM 7817	ACP Rock (traces)	0.0 km	Precontact	Undetermined
NYSM 7922	Tomkins Cove (camp)	0.0 km	Precontact	Undetermined

Fourteen inventoried historic structures exist within 1 km of the Project APE. These structures are summarized in Table 2. Six of them are eligible for listing on the NRHP, four of them are not eligible for listing on the NRHP, and the remaining four have undetermined NRHP eligibility.

Table 2. Historic structures located within 1 km of the Project.

OPRHP # or NYSM LP Site#	Name	Address	Distance to APE	NRHP Status
08705.000082	Tomkins Cove Public Library	419 North Liberty Dr, Stony Point	0.3 km west	Eligible
08705.000120	St. John the Divine Manse	170 Mott Farm Rd, Stony Point	0.2 km northwest	Eligible
08705.000119	St. John the Divine Church	170 Mott Farm Rd, Stony Point	0.2 km northwest	Eligible
08705.000146	Tilcon Tomkins Cove Quarry	Stony Point	0.2 km south	Not eligible
08705.000154	Immaculate Conception Catholic Church	5 Buckberg Rd, Stony Point	0.9 km southwest	Eligible
08705.000161	Unnamed	160 Mott Farm Rd, Stony Point	0.4 km northwest	Eligible
08705.000162	De Ronde Farm	33 Buckberg Rd, Stony Point	1.0 km southwest	Undetermined
08705.000164	Unnamed	58 Buckberg Rd, Stony Point	0.8 km southwest	Not eligible
08705.000187	Unnamed	1 Boulderberg Rd, Stony Point	0.2 km west	Not eligible
08705.000188	Unnamed	24 Free Hill Rd, Stony Point	0.7 km southwest	Not eligible
08705.000215	Boulderberg Manor/ Calvin Tomkins Estate	16 Boulderberg Rd, Stony Point	0.1 km west	Eligible
08705.000237	Unnamed	412 North Liberty Dr, Stony Point	0.3 km west	Undetermined
08705.000238	Tomkins Memorial Church	326 North Liberty Dr, Stony Point	0.5 km southwest	Undetermined
08705.000250	Veterans of Foreign Wars	400 North Liberty Dr, Stony Point	0.2 km west	Undetermined

Five previous cultural resource management studies have been completed within 1 km of the Project APE (Table 3). None of these overlap the Project APE.

Table 3. Previous Cultural Resource Studies Conducted within 1-mile of the Project Area.

OPRHP #	Title	Authors
15SR00048	Cultural Resource Reconnaissance 1B Survey, PIN 8812.14.101, Rehabilitation of CIN 86001B, Route 9W Drainage Culvert, Town of Stony Point, Rockland County, New York.	2014 – Brian R. Grills
15SR00100	Archaeological Site Evaluations Corral and Depressions Site, Fresh Air Association House of St. John the Divine Site, and Kiln Site, Algonquin Incremental Market (AIM) Project: Haverstraw T&R and Stony Point T&R Haverstraw, Stony Point, and Yorktown, New York FERC Docket No. CP14-96-000	2015 – Jenifer Elam
16SR00616	Phase I Archaeological Survey Proposed Wireless Telecommunications Site Mott Farm	2016 – Julie Labate
17SR00619	Phase III Alternative Mitigation, Fresh Air Association House of St. John the Divines Site, Algonquin Incremental Market (AIM) Project: Stony Point T&R	2017 - PAL
20SR00243	Phase IA Archaeological Assessment of the Champlain-Hudson Alternative Routes, New York	2020 – TRC – J. Larlee and R. Will

### Results of Phase IA Assessment

The Project APE has been significantly modified overtime and no longer retains sensitivity for archaeological resources. Therefore, no further archaeological studies are recommended for the Tomkins Cove Laydown Area portion of the overall CHPE Project (OPRHP 09PR03910).

### References Cited

Larlee, Jennifer and Richard Will

2020 Phase IA Archaeological Assessment of the Champlain-Hudson Alternative Routes, New York (09PR03910)

Natural Resources Conservation Service

2022 <http://websoilsurvey.sc.egov.usda.gov>.

New York State Museum

1918-1938 Manuscripts and Museum Director's correspondence files concerning archaeological work of Max Schrasisch. On file with the New York State Museum, Albany, NY.

Parker, A. C.

1922 *Archaeological History of New York: Archaeological Atlas – Sites by County*. New York State Museum Bulletins 237,238. The University of the State of New York, Albany, NY.









<p><b>TOMKINS COVE LAYDOWN AREA</b></p> <p>0 200 400 FEET 1:8,829 1" = 736'</p> <p>BASE MAP: USGS COLOR ORTHO IMAGERY DATA SOURCES: TRC</p>	<p>PROJECT: CHPE 3HDD EMCP TOMKINS COVE LAYDOWN AREA</p>	
	<p>TITLE: PROJECT LOCATION ON TOPOGRAPHIC MAP</p>	
	<p>DRAWN BY: A. YOUNG</p>	<p>PROJ. NO.: 000000</p>
	<p>CHECKED BY: K. MACK</p>	<p><b>FIGURE 1</b></p>
	<p>APPROVED BY: K. MACK</p>	
<p>DATE: OCTOBER 2022</p>	<p> <b>TRC</b></p> <p>P.O. BOX 1068 BATH, ME 04530</p>	
<p>FILE: CHPE</p>		

COORDINATE SYSTEM: NAD 1983 STATEPLANE NEW YORK EAST FIPS 3101 FEET, MAP ROTATION: 0  
 - SAVED BY: AYOUNG ON 10/24/2022, 10:09:21 AM, FILE PATH: C:\USERS\AYOUNG\ONEDRIVE - TRC\DOCUMENTS\ARC GIS\PROJECTS\CHPE\CHPE.APRX, LAYOUT NAME: 8.5X11P, INSET



COORDINATE SYSTEM: NAD 1983 STATEPLANE NEW YORK EAST FIPS 3101 FEET, MAP ROTATION: 0  
- SAVED BY: A.YOUNG ON 10/24/2022, 10:09:21 AM, FILE PATH: C:\USERS\AYOUNG\ONE\DRIVE - TRC\DOCUMENTS\ARCGIS\PROJECTS\CHPE\CHPE.APRX, LAYOUT NAME: 8.5X11P, INSET



 TOMKINS COVE LAYDOWN AREA	 0 200 400 FEET 1:11,496 1" = 958'	PROJECT: CHPE 3HDD EMCP TOMKINS COVE LAYDOWN AREA	
		TITLE: PROJECT LOCATION ON AERIAL IMAGE	
		DRAWN BY: A. YOUNG	PROJ. NO.: 000000
		CHECKED BY: K. MACK	FIGURE 2
APPROVED BY: K. MACK			
BASE MAP: USGS COLOR ORTHO IMAGERY DATA SOURCES: TRC		DATE: OCTOBER 2022	 P.O. BOX 1068 BATH, ME 04530
		FILE: CHPE	



**Champlain Hudson Power Express  
Project (09PR03910)  
Tomkins Cove Laydown Area**

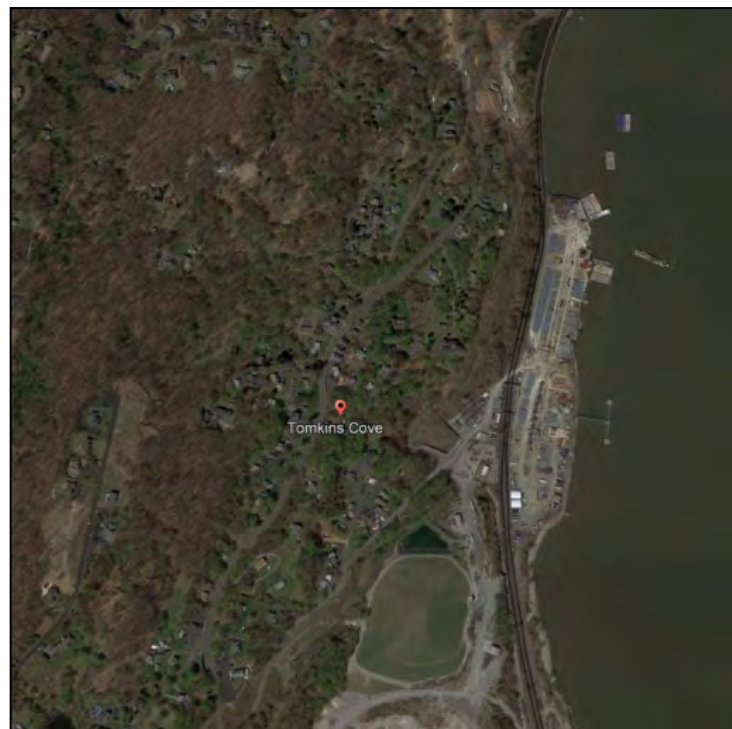
Photo 1 (above). 1994 Aerial Photograph

Photo 2 (below). 2002 Aerial Photograph



P.O. Box 1068  
Bath, Maine 04530





**Champlain Hudson Power Express  
Project (09PR03910)  
Tomkins Cove Laydown Area**

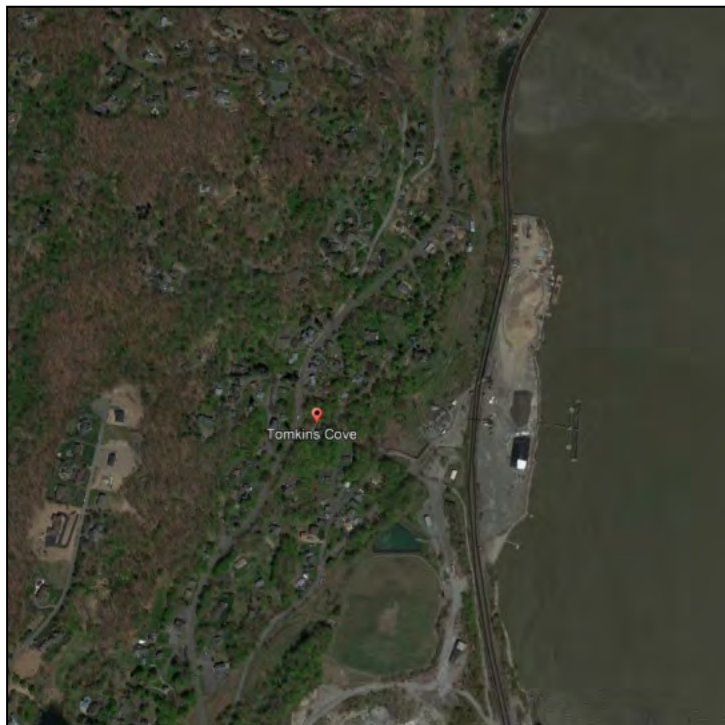
Photo 3 (above). 2010 Aerial Photograph

Photo 4 (below). 2016 Aerial Photograph



P.O. Box 1068  
Bath, Maine 04530





**Champlain Hudson Power Express  
Project (09PR03910)  
Tomkins Cove Laydown Area**

Photo 5 (above). 2020 Aerial Photograph

Photo 6 (below). 2022 Aerial Photograph



P.O. Box 1068  
Bath, Maine 04530