

## Appendix D

### FEMA FIRM Maps





F

G

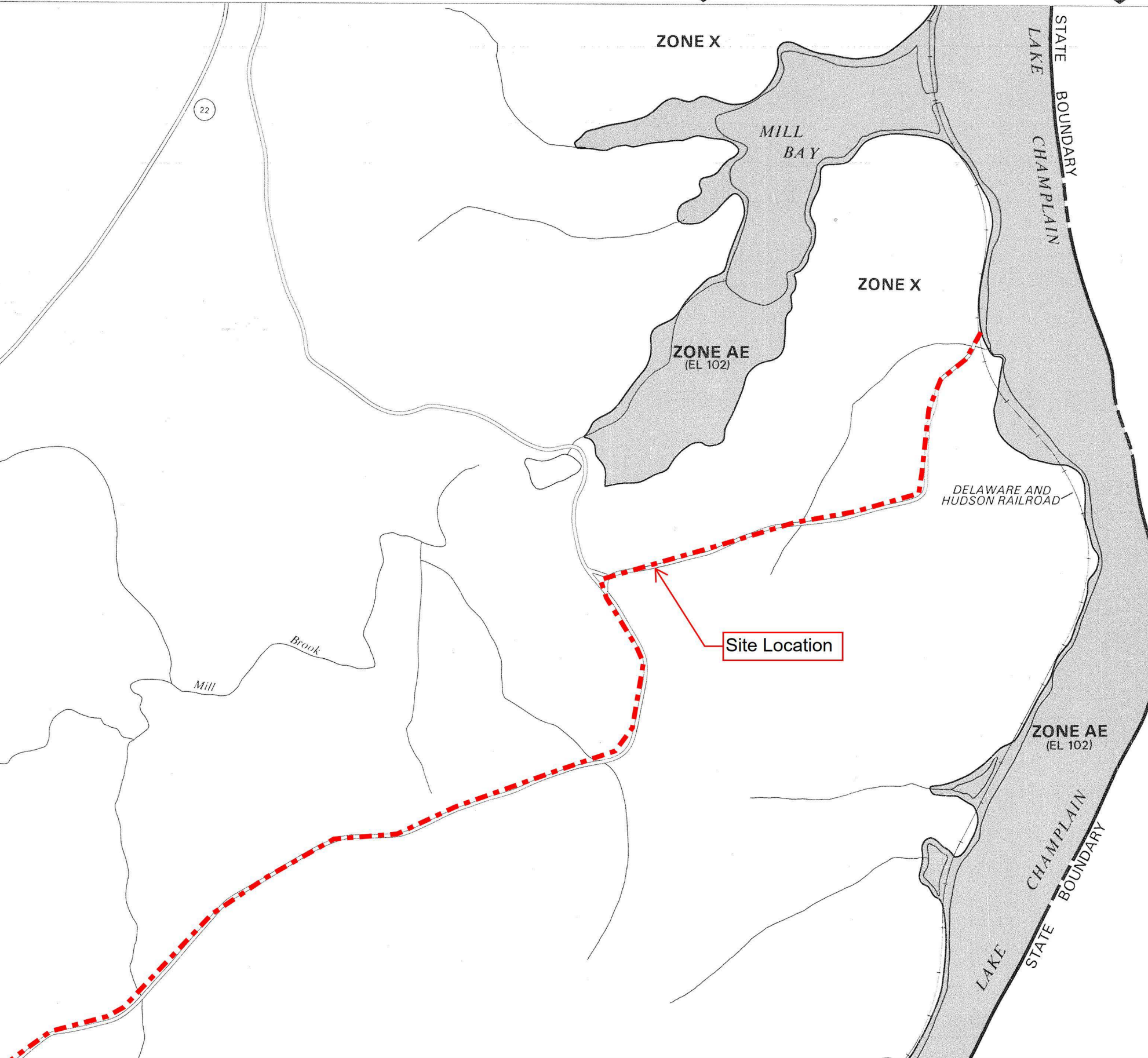
H

To determine if flood insurance is available in this community, contact your insurance agent or call the National Flood Insurance Program at (800) 638-6620



APPROXIMATE SCALE

1000 0 1000 FEET



NATIONAL FLOOD INSURANCE PROGRAM

**FIRM**

FLOOD INSURANCE RATE MAP

TOWN OF  
PUTNAM, NEW YORK  
WASHINGTON COUNTY

PANEL 10 OF 10  
(SEE MAP INDEX FOR PANELS NOT PRINTED)

COMMUNITY-PANEL NUMBER  
361236 0010 B

MAP REVISED:  
NOVEMBER 20, 1996

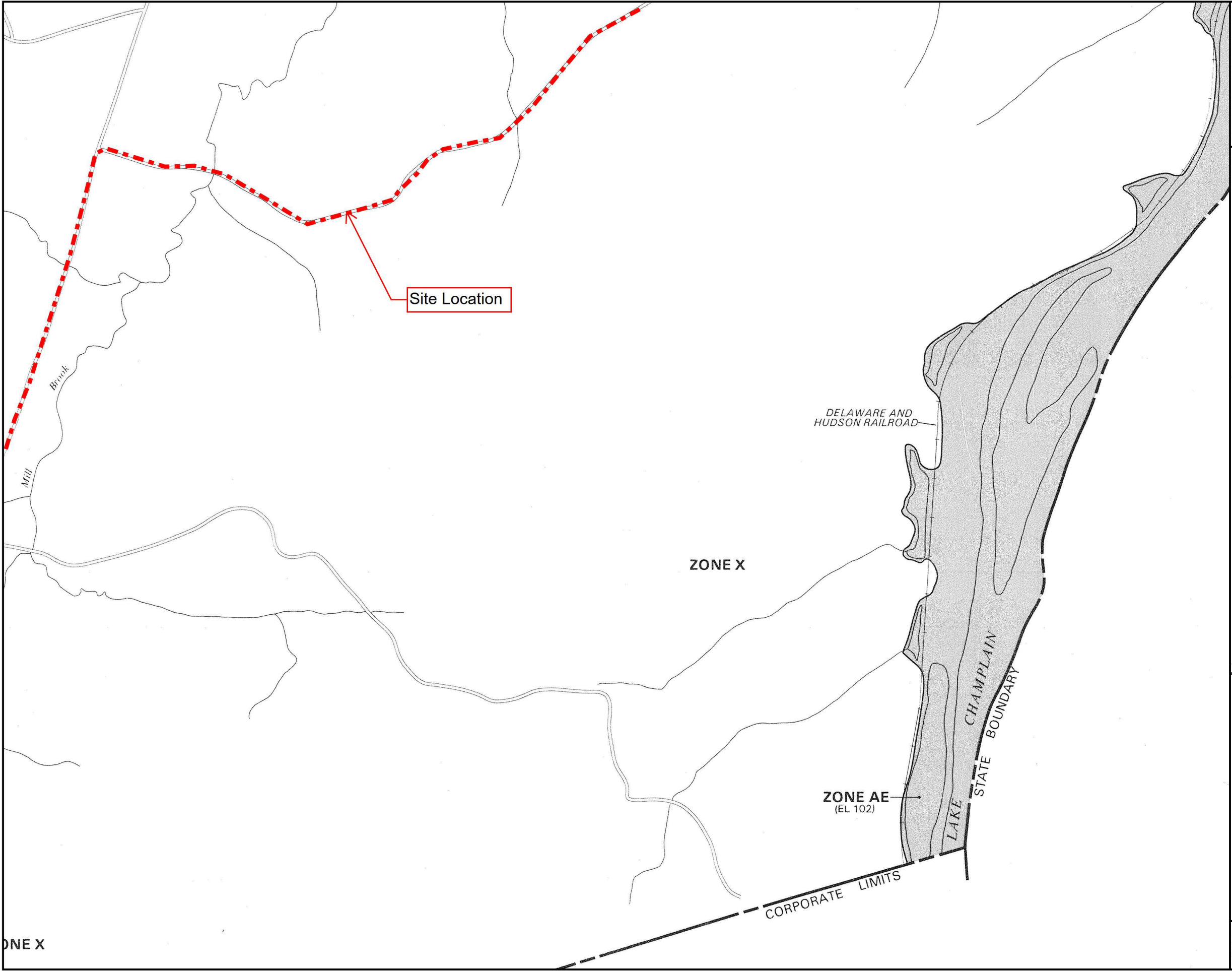


Federal Emergency Management Agency

Champlain Hudson Power Express  
FEMA FIRM MAP 1

This is an official FIRMette showing a portion of the above-referenced flood map created from the MSC FIRMette Web tool. This map does not reflect changes or amendments which may have been made subsequent to the date on the title block. For additional information about how to make sure the map is current, please see the Flood Hazard Mapping Updates Overview Fact Sheet available on the FEMA Flood Map Service Center home page at <https://msc.fema.gov>.





To determine if flood insurance is available in this community, contact your insurance agent or call the National Flood Insurance Program at (800) 638-6620.



APPROXIMATE SCALE

1000 0 1000 FEET

NATIONAL FLOOD INSURANCE PROGRAM

**FIRM**  
FLOOD INSURANCE RATE MAP

TOWN OF  
PUTNAM, NEW YORK  
WASHINGTON COUNTY

PANEL 10 OF 10  
(SEE MAP INDEX FOR PANELS NOT PRINTED)

COMMUNITY-PANEL NUMBER  
361236 0010 B

MAP REVISED:  
NOVEMBER 20, 1996

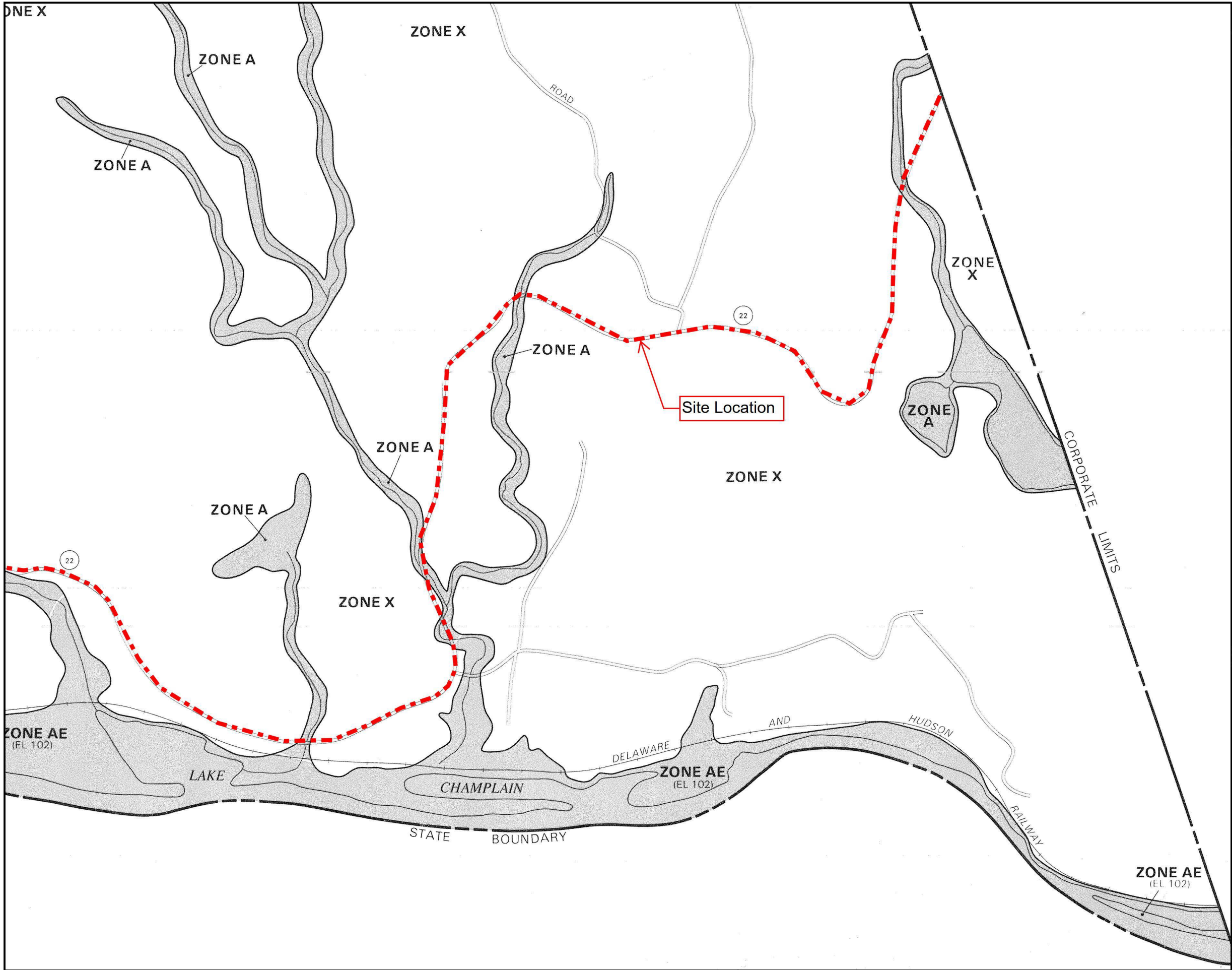


Federal Emergency Management Agency

Champlain Hudson Power Express  
FEMA FIRM MAP 2

This is an official FIRMette showing a portion of the above-referenced flood map created from the MSC FIRMette Web tool. This map does not reflect changes or amendments which may have been made subsequent to the date on the title block. For additional information about how to make sure the map is current, please see the Flood Hazard Mapping Updates Overview Fact Sheet available on the FEMA Flood Map Service Center home page at <https://msc.fema.gov>.





determine if flood insurance is available in this community, contact your insurance agent or call the National Flood Insurance Program at (800) 638-6620.



APPROXIMATE SCALE

1000 0 1000 FEET

NATIONAL FLOOD INSURANCE PROGRAM

**FIRM**  
FLOOD INSURANCE RATE MAP

TOWN OF  
DRESDEN,  
NEW YORK  
WASHINGTON COUNTY

PANEL 15 OF 15  
(SEE MAP INDEX FOR PANELS NOT PRINTED)

COMMUNITY-PANEL NUMBER  
361410 0015 B

MAP REVISED:  
SEPTEMBER 20, 1996

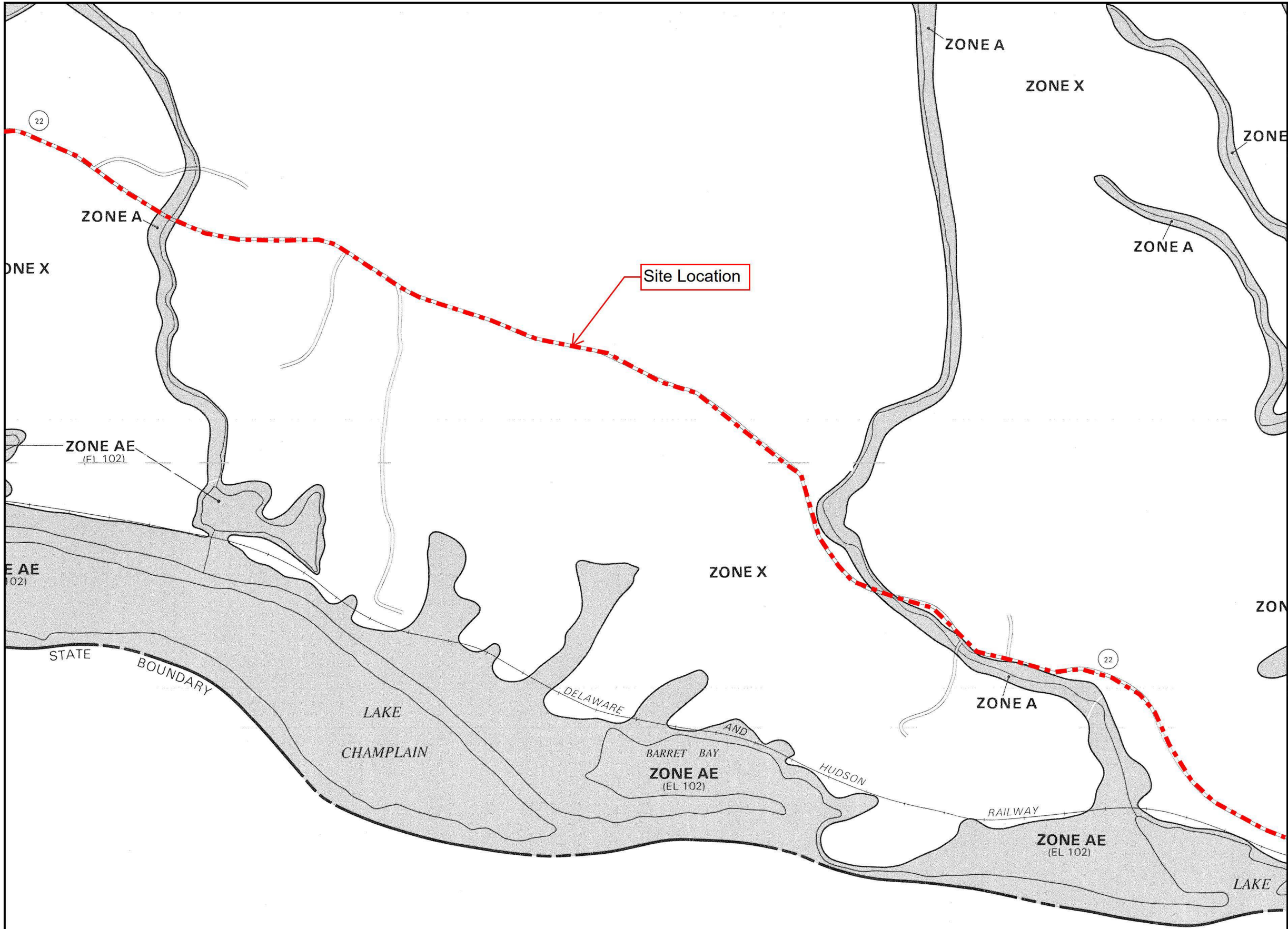


Federal Emergency Management Agency

Champlain Hudson Power Express  
FEMA FIRM MAP 3

This is an official FIRMette showing a portion of the above-referenced flood map created from the MSC FIRMette Web tool. This map does not reflect changes or amendments which may have been made subsequent to the date on the title block. For additional information about how to make sure the map is current, please see the Flood Hazard Mapping Updates Overview Fact Sheet available on the FEMA Flood Map Service Center home page at <https://msc.fema.gov>.





determine if flood insurance is available in this community, contact your insurance agent or call the National Flood Insurance Program at (800) 638-6620.



APPROXIMATE SCALE

1000 0 1000 FEET

NATIONAL FLOOD INSURANCE PROGRAM

**FIRM**  
FLOOD INSURANCE RATE MAP

TOWN OF  
DRESDEN,  
NEW YORK  
WASHINGTON COUNTY

PANEL 15 OF 15  
(SEE MAP INDEX FOR PANELS NOT PRINTED)

COMMUNITY-PANEL NUMBER  
361410 0015 B

MAP REVISED:  
SEPTEMBER 20, 1996

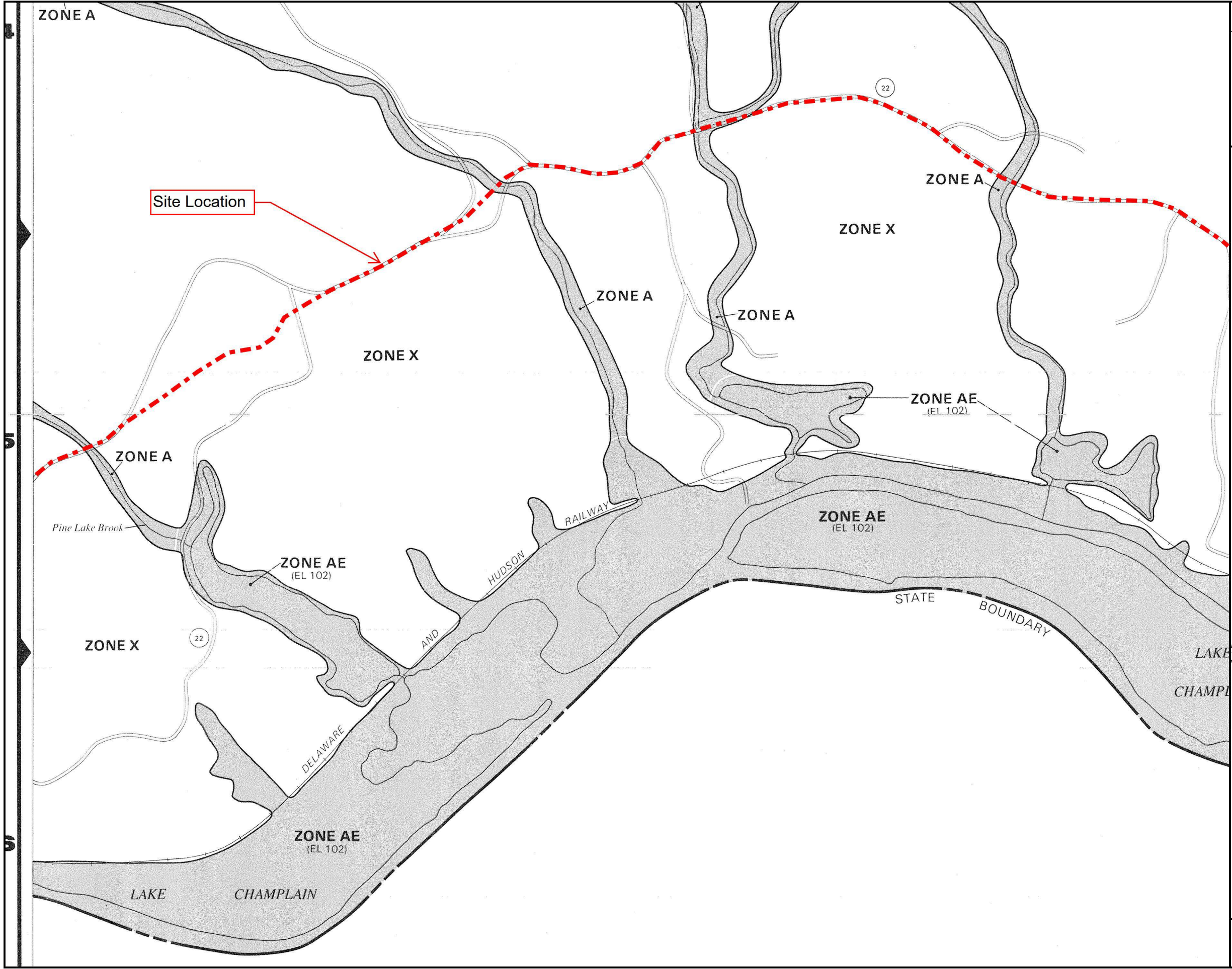


Federal Emergency Management Agency

Champlain Hudson Power Express  
FEMA FIRM MAP 4

This is an official FIRMette showing a portion of the above-referenced flood map created from the MSC FIRMette Web tool. This map does not reflect changes or amendments which may have been made subsequent to the date on the title block. For additional information about how to make sure the map is current, please see the Flood Hazard Mapping Updates Overview Fact Sheet available on the FEMA Flood Map Service Center home page at <https://msc.fema.gov>.





determine if flood insurance is available in this community, contact your insurance agent or call the National Flood Insurance Program at (800) 638-6620.



APPROXIMATE SCALE

1000 0 1000 FEET

NATIONAL FLOOD INSURANCE PROGRAM

**FIRM**  
FLOOD INSURANCE RATE MAP

TOWN OF  
DRESDEN,  
NEW YORK  
WASHINGTON COUNTY

PANEL 15 OF 15  
(SEE MAP INDEX FOR PANELS NOT PRINTED)

COMMUNITY-PANEL NUMBER  
361410 0015 B

MAP REVISED:  
SEPTEMBER 20, 1996

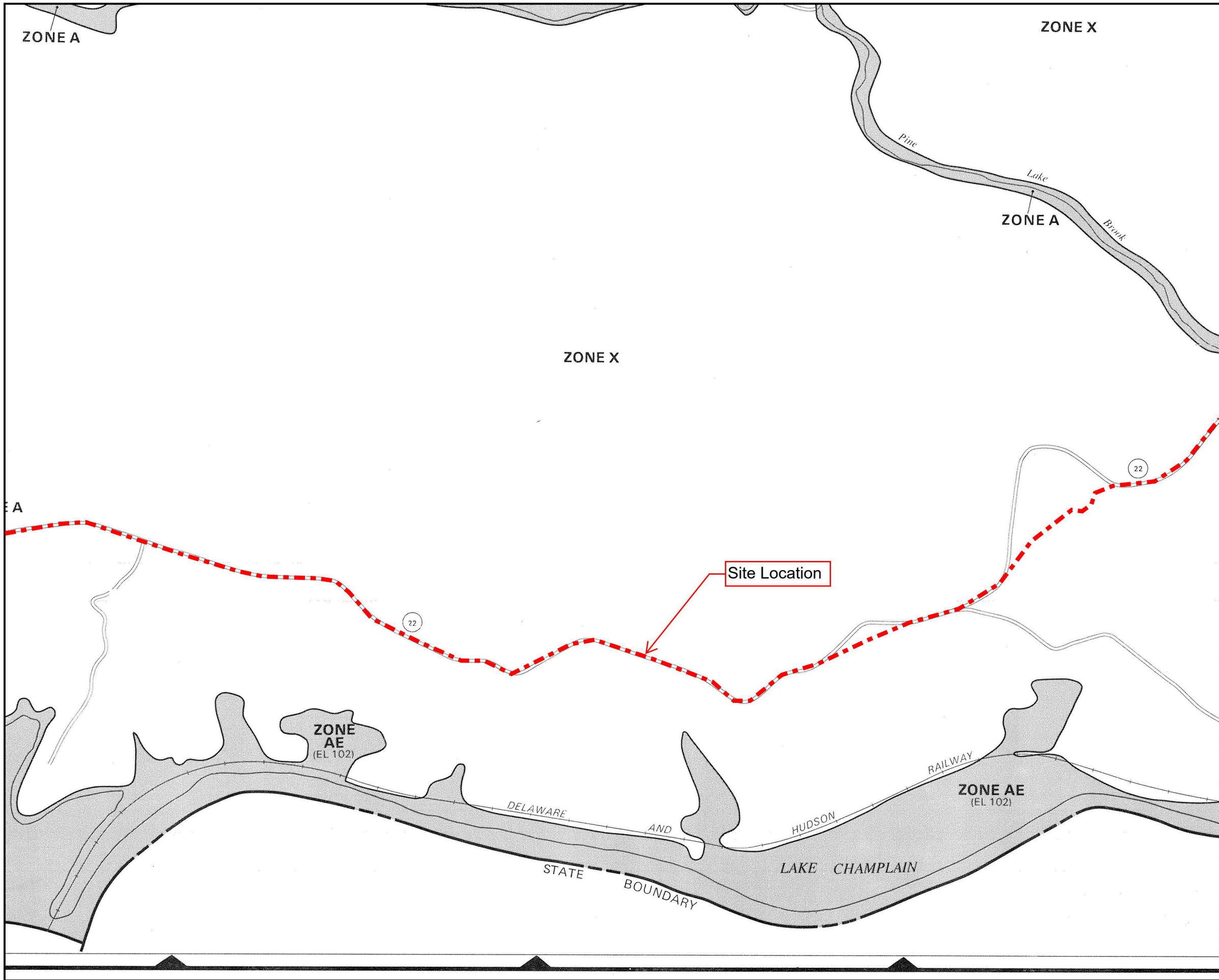


Federal Emergency Management Agency

Champlain Hudson Power Express  
FEMA FIRM MAP 5

This is an official FIRMette showing a portion of the above-referenced flood map created from the MSC FIRMette Web tool. This map does not reflect changes or amendments which may have been made subsequent to the date on the title block. For additional information about how to make sure the map is current, please see the Flood Hazard Mapping Updates Overview Fact Sheet available on the FEMA Flood Map Service Center home page at <https://msc.fema.gov>.





To determine if flood insurance is available in this community, contact your insurance agent or call the National Flood Insurance Program at (800) 638-6620.



APPROXIMATE SCALE

1000 0 1000 FEET

NATIONAL FLOOD INSURANCE PROGRAM

**FIRM**  
FLOOD INSURANCE RATE MAP

TOWN OF  
DRESDEN,  
NEW YORK  
WASHINGTON COUNTY

PANEL 10 OF 15  
(SEE MAP INDEX FOR PANELS NOT PRINTED)

COMMUNITY-PANEL NUMBER  
361410 0010 B

MAP REVISED:  
SEPTEMBER 20, 1996

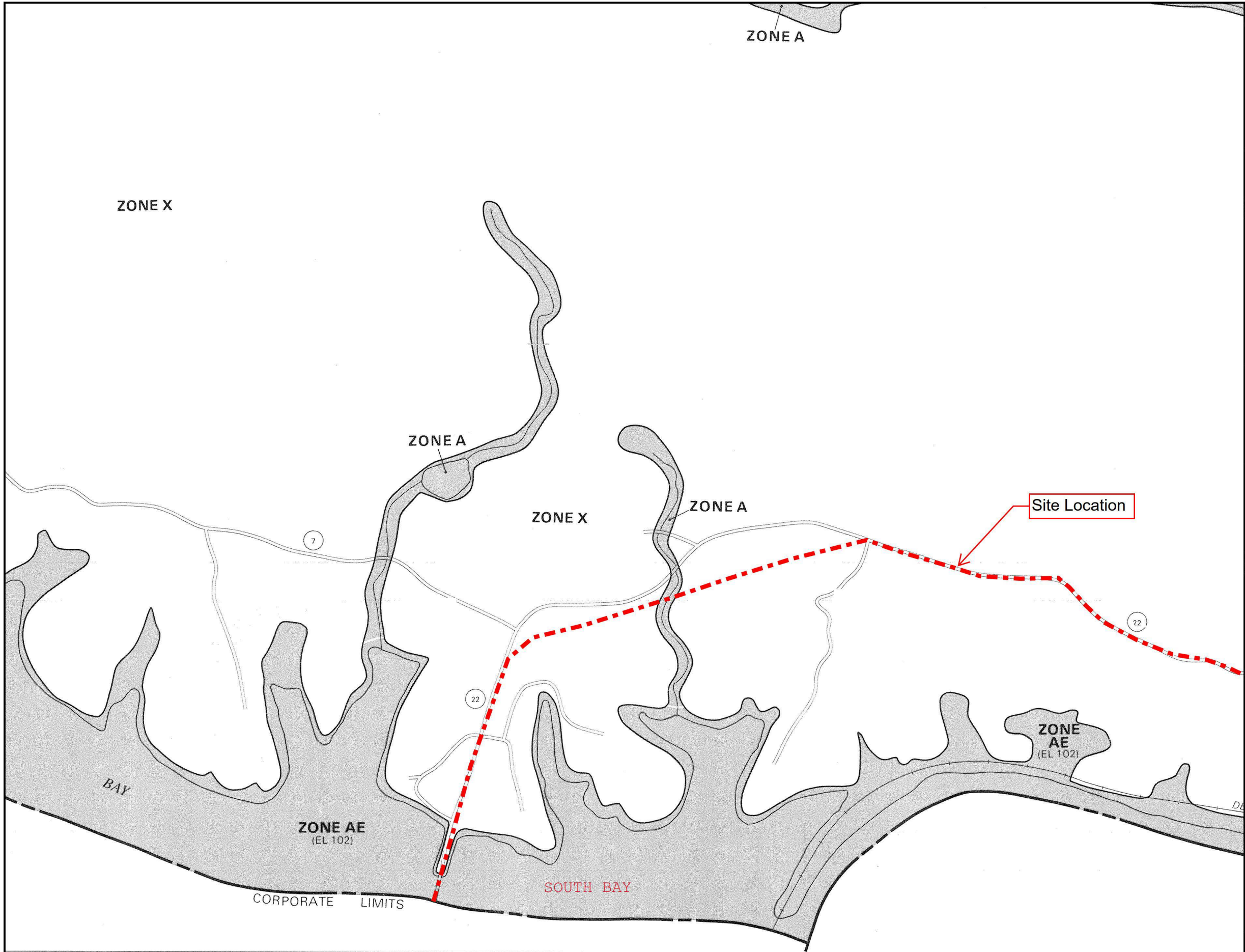


Federal Emergency Management Agency

Champlain Hudson Power Express  
FEMA FIRM MAP 6

This is an official FIRMette showing a portion of the above-referenced flood map created from the MSC FIRMette Web tool. This map does not reflect changes or amendments which may have been made subsequent to the date on the title block. For additional information about how to make sure the map is current, please see the Flood Hazard Mapping Updates Overview Fact Sheet available on the FEMA Flood Map Service Center home page at <https://msc.fema.gov>.





To determine if flood insurance is available in this community, contact your insurance agent or call the National Flood Insurance Program at (800) 638-6620.



APPROXIMATE SCALE



NATIONAL FLOOD INSURANCE PROGRAM

**FIRM**  
FLOOD INSURANCE RATE MAP

TOWN OF  
DRESDEN,  
NEW YORK  
WASHINGTON COUNTY

PANEL 10 OF 15  
(SEE MAP INDEX FOR PANELS NOT PRINTED)

COMMUNITY-PANEL NUMBER  
361410 0010 B

MAP REVISED:  
SEPTEMBER 20, 1996



Federal Emergency Management Agency

Champlain Hudson Power Express  
FEMA FIRM MAP 7

This is an official FIRMette showing a portion of the above-referenced flood map created from the MSC FIRMette Web tool. This map does not reflect changes or amendments which may have been made subsequent to the date on the title block. For additional information about how to make sure the map is current, please see the Flood Hazard Mapping Updates Overview Fact Sheet available on the FEMA Flood Map Service Center home page at <https://msc.fema.gov>.



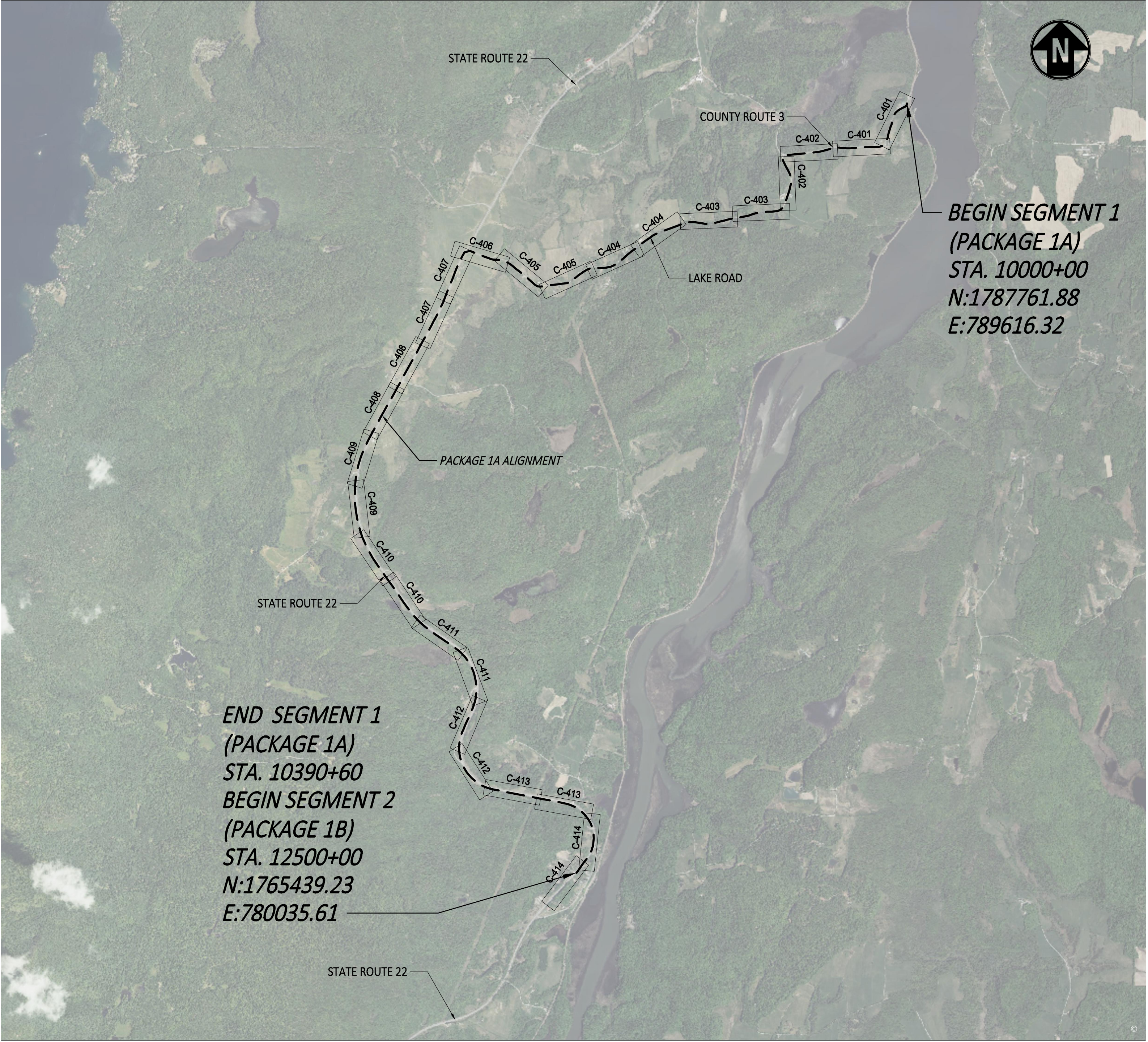


Appendix E  
Grading and Erosion Sediment  
Control Plans and Details





File: V:\PROJECTS\ANY\6\066076\_000\09\_DESIGN\DRAWINGS\01\_SHEETS\DESIGN PACKAGE 1A\066076\_1A\_C-400.DWG Saved: 9/15/2022 2:08:53 PM Plotted: 9/15/2022 8:56:12 AM Current User: McEnaney III, James LastSavedBy: 5314



**E&S KEY MAP**  
SCALE: 1" = 2000'



IT IS A VIOLATION OF LAW FOR ANY PERSON, UNLESS THEY ARE ACTING UNDER THE DIRECTION OF A LICENSED PROFESSIONAL ENGINEER, ARCHITECT, LANDSCAPE ARCHITECT OR LAND SURVEYOR TO ALTER AN ITEM IN ANY WAY. IF AN ITEM BEARING THE STAMP OF A LICENSED PROFESSIONAL IS ALTERED, THE ALTERING ENGINEER, ARCHITECT, LANDSCAPE ARCHITECT OR LAND SURVEYOR SHALL STAMP THE DOCUMENT AND INCLUDE THE NOTATION "ALTERED BY" FOLLOWED BY THEIR SIGNATURE, THE DATE OF SUCH ALTERATION, AND A SPECIFIC DESCRIPTION OF THE ALTERATION.

0	09/21/2022	FINAL EM&CP SUBMISSION	JM	JR	
No.	DATE	SUBMITTAL / REVISION DESCRIPTION	DB	APP	

**CHAMPLAIN HUDSON POWER EXPRESS  
SEGMENT 1 (PACKAGE 1A) PUTNAM TO DRESDEN  
KEYPLAN E&S**

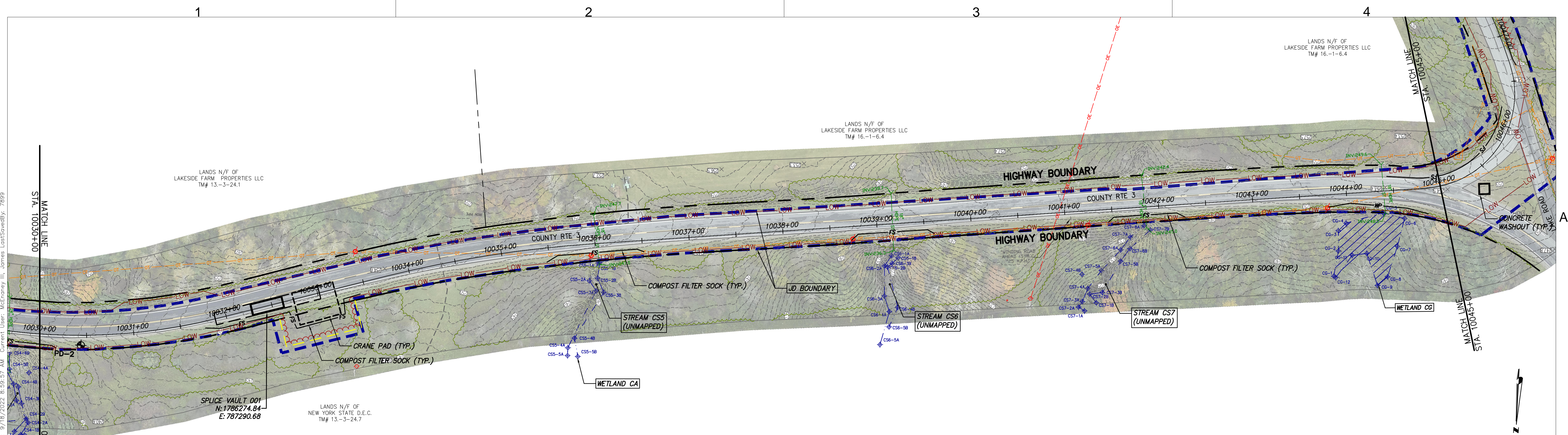
DRAWN BY: JJE DESIGNED BY: JTM APPROVED BY: JPR SCALE AS NOTED  
REV. NO. X

KIEWIT PROJECT NO.	21162
CHA PROJECT NO.	066076
DRAWING NO.	C-400
DATE	09/21/2022
SH.NO.	XXX OF XXX

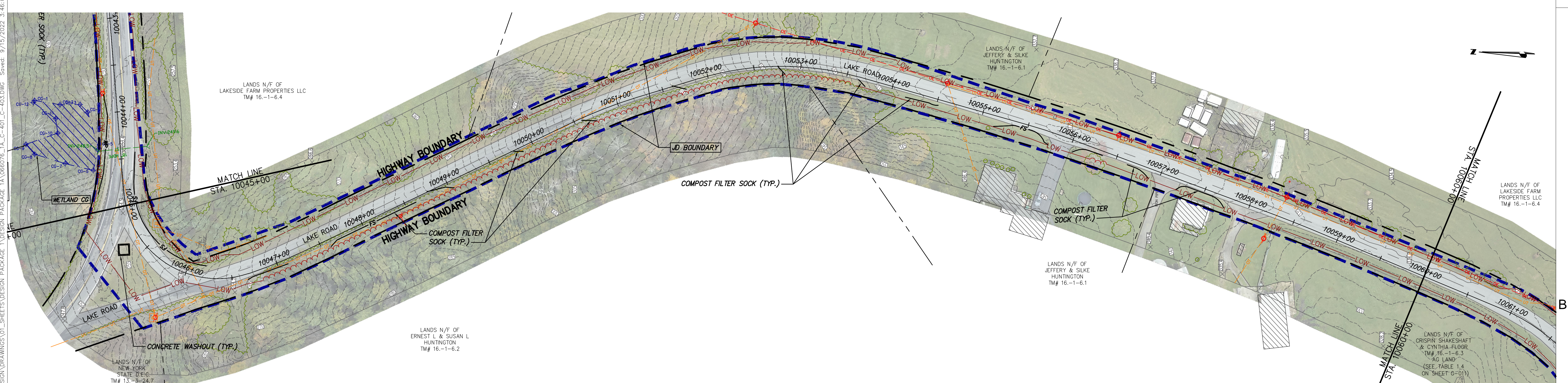












P1A STA. 10030+00 TO STA. 10045+00 PLAN VIEW  
SCALE: 1" = 50'



STA. 10045+00 TO STA. 10060+00 PLAN VIEW  
SCALE: 1" = 50'



IT IS A VIOLATION OF LAW FOR ANY PERSON, UNLESS THEY ARE ACTING UNDER THE DIRECTION OF A LICENSED PROFESSIONAL ENGINEER, ARCHITECT, LANDSCAPE ARCHITECT OR LAND SURVEYOR TO ALTER AN ITEM IN ANY WAY. IF AN ITEM BEARING THE STAMP OF A LICENSED PROFESSIONAL IS ALTERED, THE ALTERING ENGINEER, ARCHITECT, LANDSCAPE ARCHITECT OR LAND SURVEYOR SHALL STAMP THE DOCUMENT AND INCLUDE THE NOTATION "ALTERED BY" FOLLOWED BY THEIR SIGNATURE, THE DATE OF SUCH ALTERATION, AND A SPECIFIC DESCRIPTION OF THE ALTERATION.

No.	DATE	SUBMITTAL / REVISION DESCRIPTION	DB	APP
0	09/21/2022	FINAL EM&CP SUBMISSION	JM	JR

CHAMPLAIN HUDSON POWER EXPRESS  
SEGMENT 1 (PACKAGE 1A) PUTNAM TO DRESDEN  
STA. 10030+00 TO STA. 10060+00  
EROSION AND SEDIMENT CONTROL PLAN

DRAWN BY: JJE

DESIGNED BY: JTM

APPROVED BY: JPR

SCALE: AS NOTED

REV. NO. X

KIEWIT PROJECT NO. 21162  
CHA PROJECT NO. 068076  
DRAWING NO. C-402

DATE 09/21/2022  
SH.NO. XXX OF XXX