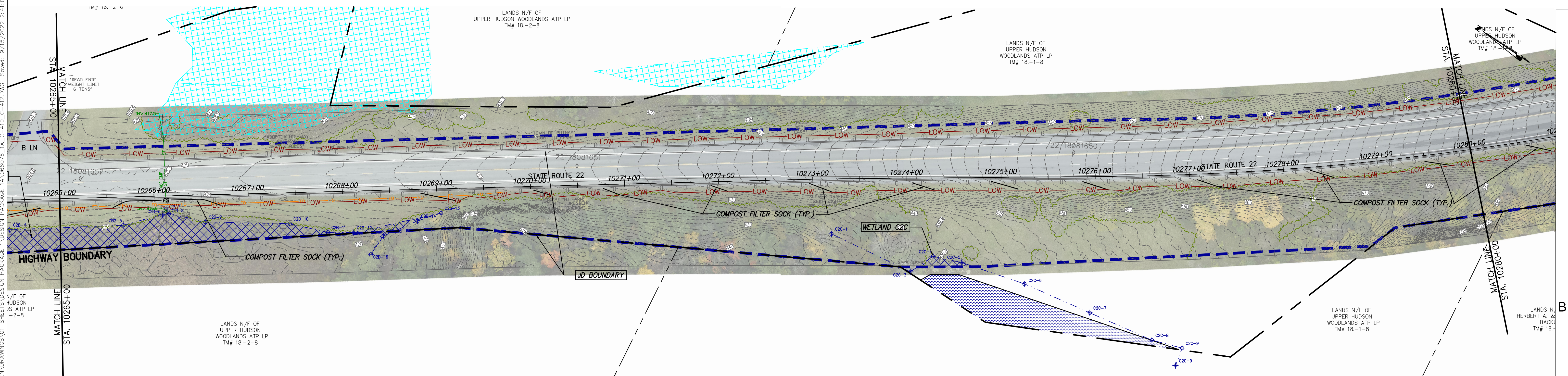
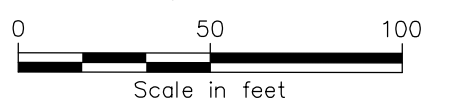


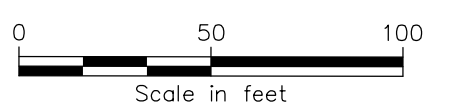
STA. 10250+00 TO STA. 10265+00 PLAN VIEW

SCALE: 1" = 50'



STA. 10265+00 TO STA. 10280+00 PLAN VIEW

SCALE: 1" = 50'



NOT FOR CONSTRUCTION  
FOR EM&CP PERMIT ONLY



IT IS A VIOLATION OF LAW FOR ANY PERSON, UNLESS THEY ARE ACTING UNDER THE DIRECTION OF A LICENSED PROFESSIONAL ENGINEER, ARCHITECT, LANDSCAPE ARCHITECT OR LAND SURVEYOR TO ALTER AN ITEM IN ANY WAY. IF AN ITEM BEARING THE STAMP OF A LICENSED PROFESSIONAL IS ALTERED, THE ALTERING ENGINEER, ARCHITECT, LANDSCAPE ARCHITECT OR LAND SURVEYOR SHALL STAMP THE DOCUMENT AND INCLUDE THE NOTATION "ALTERED BY" FOLLOWED BY THEIR SIGNATURE, THE DATE OF SUCH ALTERATION, AND A SPECIFIC DESCRIPTION OF THE ALTERATION.

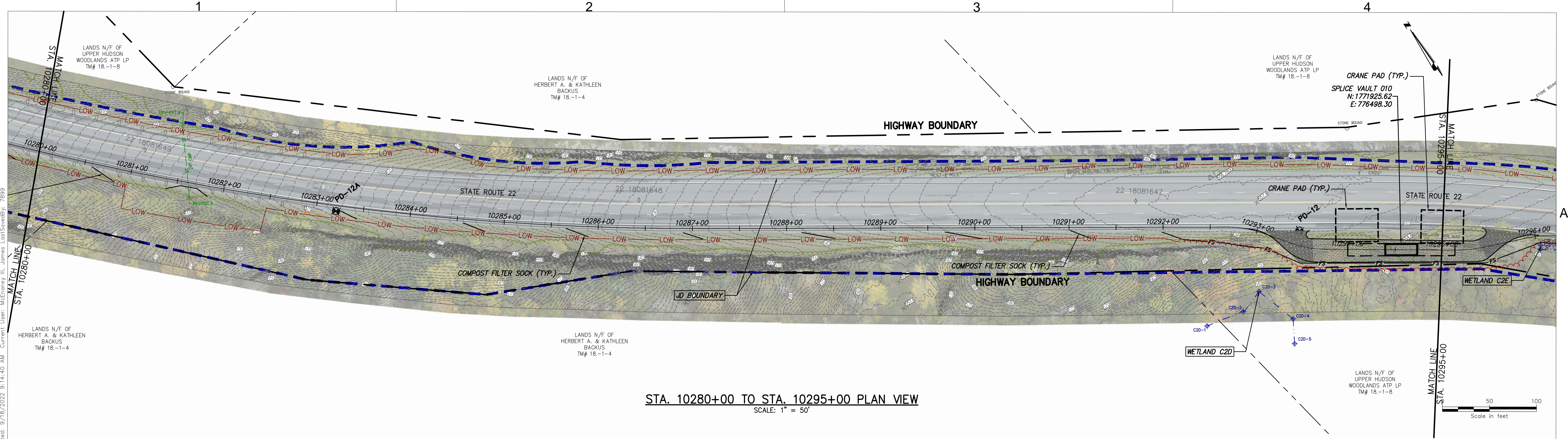
0	09/21/2022	FINAL EM&CP SUBMISSION	JM	JR
No.	DATE	SUBMITTAL / REVISION DESCRIPTION	DB	APP

**CHAMPLAIN HUDSON POWER EXPRESS  
SEGMENT 1 (PACKAGE 1A) PUTNAM TO DRESDEN  
STA. 10250+00 TO STA. 10280+00  
EROSION AND SEDIMENT CONTROL PLAN**

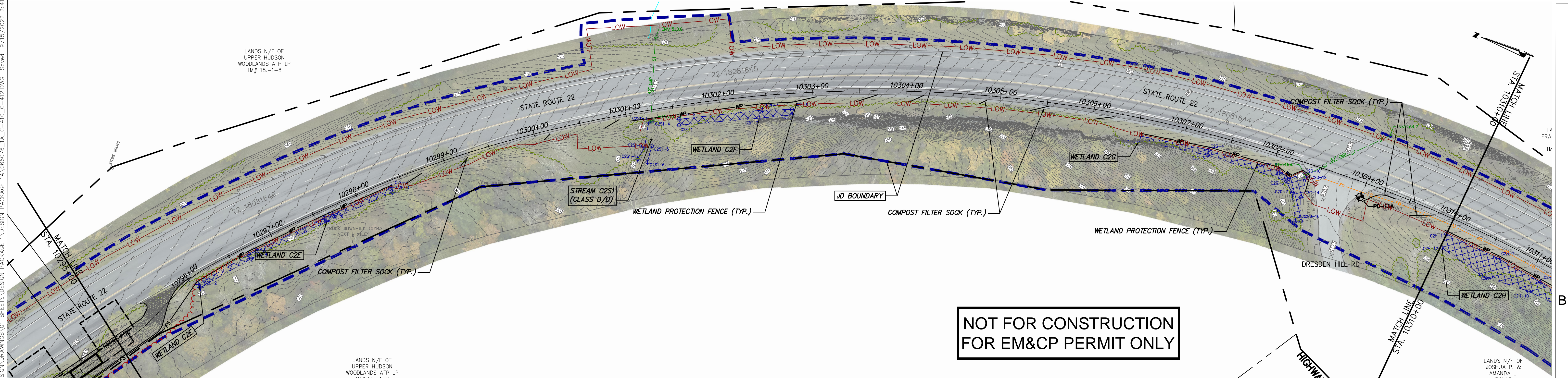
KIEWIT PROJECT NO.	
21162	
CHA PROJECT NO.	
066076	
DRAWING NO.	
C-410	
DATE	09/21/2022
SH NO.	XXX OF XXX



File: V:\PROJECTS\ANY\61066076.000\09\_DESIGN\DRAWINGS\01\_SHEETS\DESIGN PACKAGE 1A\_C-410\_C-412.DWG Saved: 9/15/2022 2:41:02 PM Plotted: 9/18/2022 9:14:40 AM Current User: McEnaney III, James LastSavedBy: 7899



STA. 10280+00 TO STA. 10295+00 PLAN VIEW  
SCALE: 1" = 50'



STA. 10295+00 TO STA. 10310+00 PLAN VIEW  
SCALE: 1" = 50'

NOT FOR CONSTRUCTION  
FOR EM&CP PERMIT ONLY



IT IS A VIOLATION OF LAW FOR ANY PERSON, UNLESS THEY ARE ACTING UNDER THE DIRECTION OF A LICENSED PROFESSIONAL ENGINEER, ARCHITECT, LANDSCAPE ARCHITECT OR LAND SURVEYOR TO ALTER AN ITEM IN ANY WAY. IF AN ITEM BEARING THE STAMP OF A LICENSED PROFESSIONAL IS ALTERED, THE ALTERING ENGINEER, ARCHITECT, LANDSCAPE ARCHITECT OR LAND SURVEYOR SHALL STAMP THE DOCUMENT AND INCLUDE THE NOTATION "ALTERED BY" FOLLOWED BY THEIR SIGNATURE, THE DATE OF SUCH ALTERATION, AND A SPECIFIC DESCRIPTION OF THE ALTERATION.

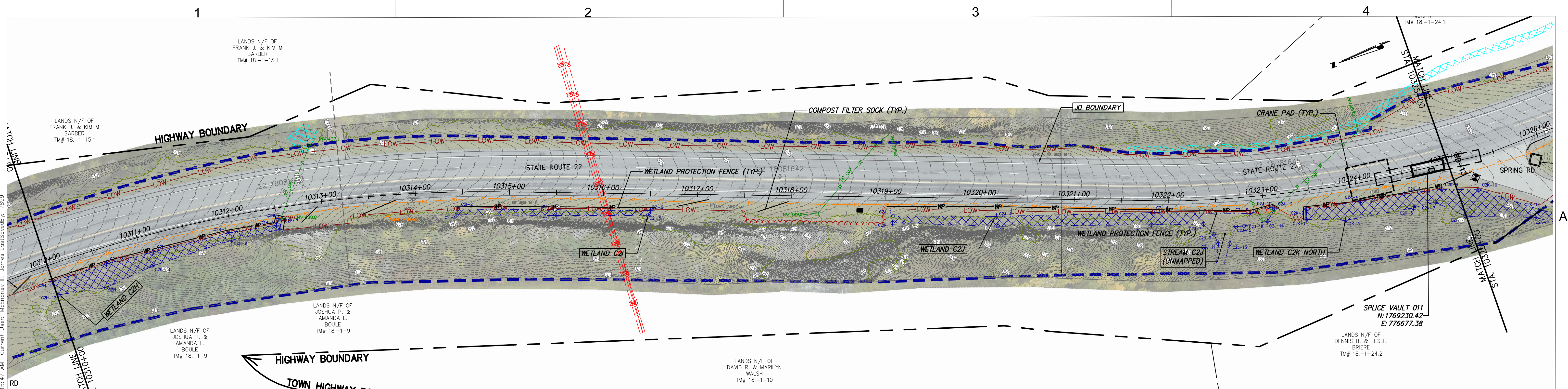
0	09/21/2022	FINAL EM&CP SUBMISSION	JM	JR
No.	DATE	SUBMITTAL / REVISION DESCRIPTION	DB	APP

CHAMPLAIN HUDSON POWER EXPRESS  
SEGMENT 1 (PACKAGE 1A) PUTNAM TO DRESDEN  
STA. 10280+00 TO STA. 10295+00  
EROSION AND SEDIMENT CONTROL PLAN

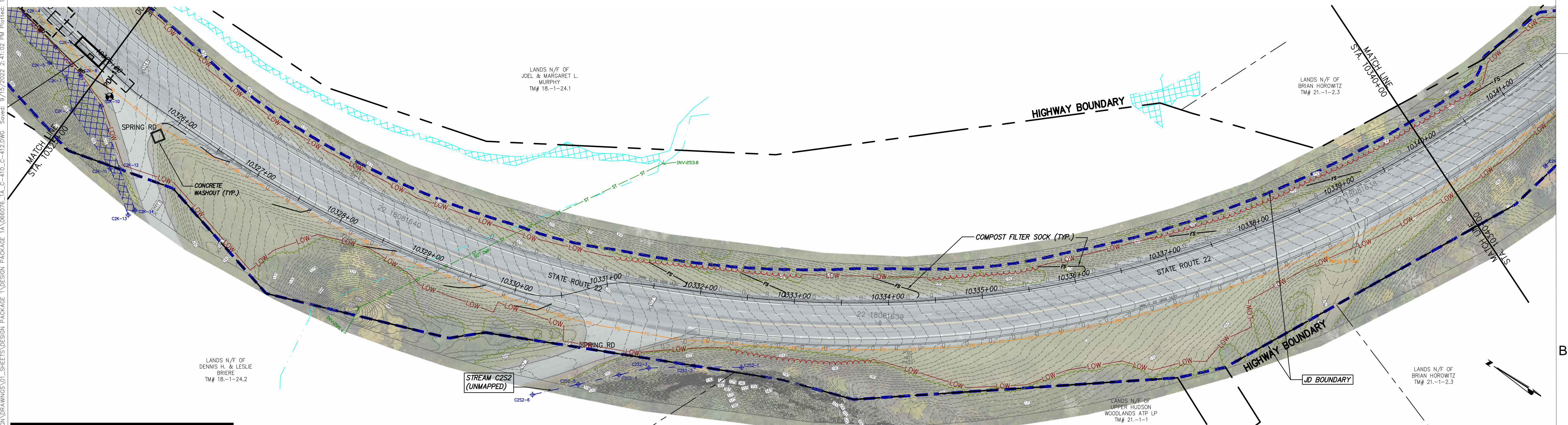
DRAWN BY: JJE DESIGNED BY: JTM APPROVED BY: JPR SCALE AS NOTED  
REV. NO. XXX OF XXX

KIEWIT PROJECT NO.	21162
CHA PROJECT NO.	068076
DRAWING NO.	C-411
DATE	09/21/2022
SH.NO.	XXX OF XXX









STA. 10310+00 TO STA. 10325+00 PLAN VIEW  
SCALE: 1" = 50'



STA. 10325+00 TO STA. 10340+00 PLAN VIEW  
SCALE: 1" = 50'

NOT FOR CONSTRUCTION  
FOR EM&CP PERMIT ONLY



IT IS A VIOLATION OF LAW FOR ANY PERSON, UNLESS THEY ARE ACTING UNDER THE DIRECTION OF A LICENSED PROFESSIONAL ENGINEER, ARCHITECT, LANDSCAPE ARCHITECT OR LAND SURVEYOR TO ALTER AN ITEM IN ANY WAY. IF AN ITEM BEARING THE STAMP OF A LICENSED PROFESSIONAL IS ALTERED, THE ALTERING ENGINEER, ARCHITECT, LANDSCAPE ARCHITECT OR LAND SURVEYOR SHALL STAMP THE DOCUMENT AND INCLUDE THE NOTATION "ALTERED BY" FOLLOWED BY THEIR SIGNATURE, THE DATE OF SUCH ALTERATION, AND A SPECIFIC DESCRIPTION OF THE ALTERATION.

No.	DATE	SUBMITTAL / REVISION DESCRIPTION	DB	APP
0	09/21/2022	FINAL EM&CP SUBMISSION	JM	JR

CHAMPLAIN HUDSON POWER EXPRESS  
SEGMENT 1 (PACKAGE 1A) PUTNAM TO DRESDEN  
STA. 10310+00 TO STA. 10340+00  
EROSION AND SEDIMENT CONTROL PLAN

DRAWN BY: JJE

DESIGNED BY: JTM

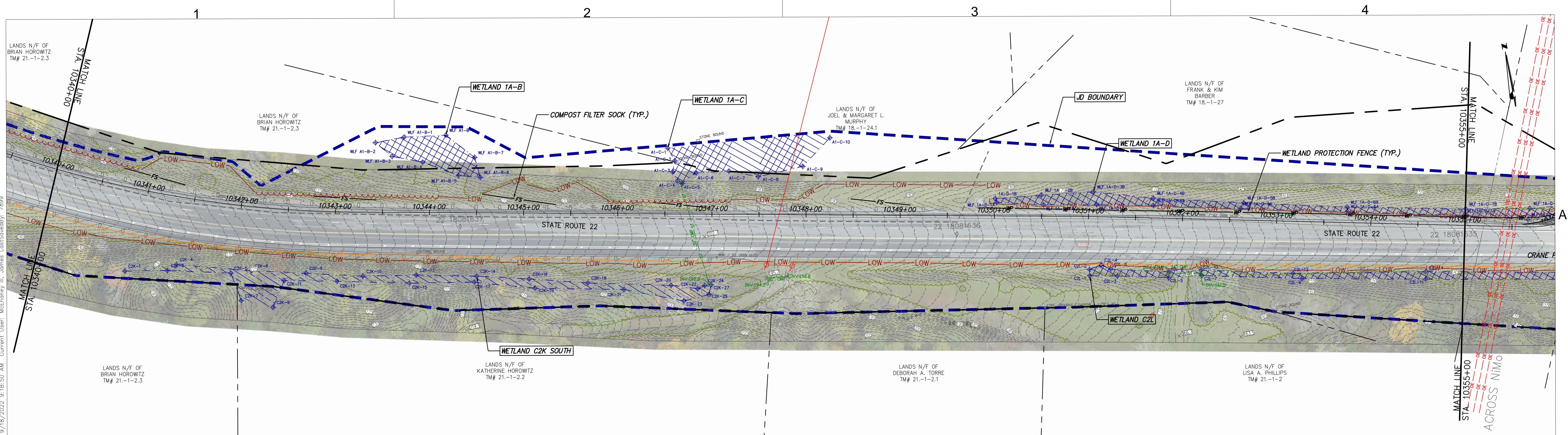
APPROVED BY: JPR

SCALE: AS NOTED  
REV. NO. X

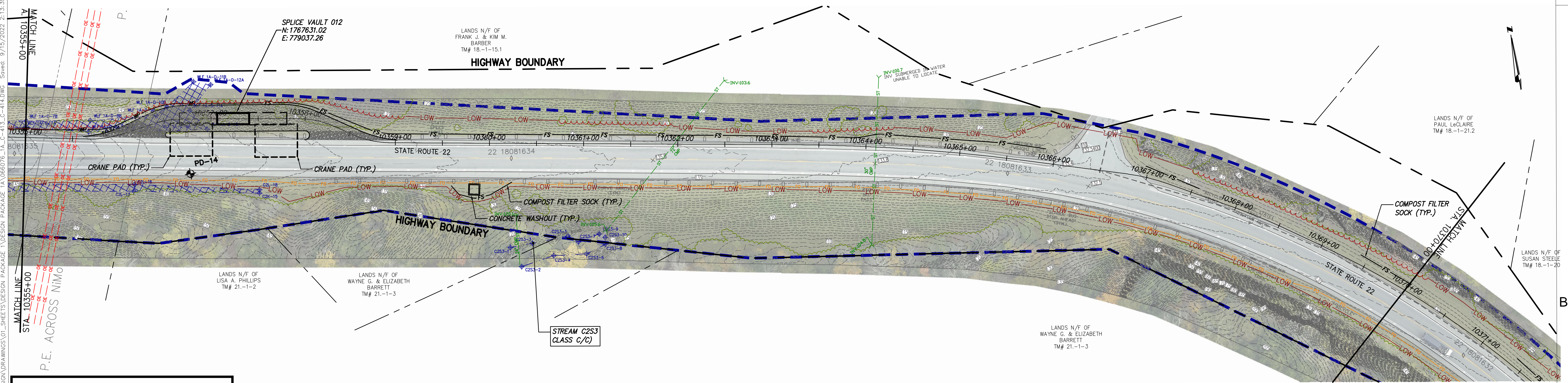
KIEWIT PROJECT NO. 21162  
CHA PROJECT NO. 066076  
DRAWING NO. C-412

DATE: 09/21/2022  
XXX OF XXX



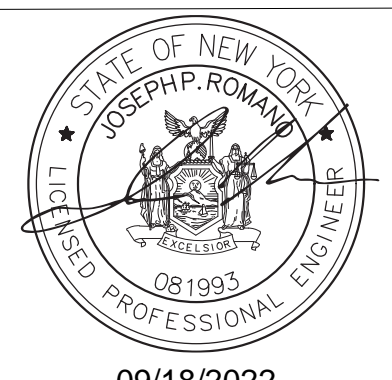





STA. 10340+00 TO STA. 10355+00 PLAN VIEW  
SCALE: 1" = 50'



STA. 10355+00 TO STA. 10370+00 PLAN VIEW  
SCALE: 1" = 50'

NOT FOR CONSTRUCTION  
FOR EM&CP PERMIT ONLY



IT IS A VIOLATION OF LAW FOR ANY PERSON, UNLESS THEY ARE ACTING UNDER THE DIRECTION OF A LICENSED PROFESSIONAL ENGINEER, ARCHITECT, LANDSCAPE ARCHITECT OR LAND SURVEYOR TO ALTER AN ITEM IN ANY WAY. IF AN ITEM BEARING THE STAMP OF A LICENSED PROFESSIONAL IS ALTERED, THE ALTERING ENGINEER, ARCHITECT, LANDSCAPE ARCHITECT OR LAND SURVEYOR SHALL STAMP THE DOCUMENT AND INCLUDE THE NOTATION "ALTERED BY" FOLLOWED BY THEIR SIGNATURE, THE DATE OF SUCH ALTERATION, AND A SPECIFIC DESCRIPTION OF THE ALTERATION.

No.	DATE	SUBMITTAL / REVISION DESCRIPTION	DB	APP
0	09/21/2022	FINAL EM&CP SUBMISSION	JM	JR

CHAMPLAIN HUDSON POWER EXPRESS  
SEGMENT 1 (PACKAGE 1A) PUTNAM TO DRESDEN  
STA. 10340+00 TO STA. 10370+00  
EROSION AND SEDIMENT CONTROL PLAN

KIEWIT PROJECT NO.  
21162  
CHA PROJECT NO.  
066076  
DRAWING NO.  
C-413

DRAWN BY: JJE  
DESIGNED BY: JTM  
APPROVED BY: JPR  
SCALE: AS NOTED  
DATE: 09/21/2022  
SH.NO. XXX OF XXX







FILE NAME = V:\P\Projects\ANY\606076\000\09\_Design\Drawings\Hwy\Segment 1\06076\_cph\_sl\_wztc\_01.dgn

NOTES:

1. ALL TRAFFIC CONTROL AND WORK AREA PROTECTIONS DEVICES SHALL BE FABRICATED AND INSTALLED IN ACCORDANCE WITH THE FEDERAL HIGHWAY ADMINISTRATION (FHWA) MANUAL ON UNIFORM TRAFFIC CONTROL DEVICES (MUTCD) FOR STREETS AND HIGHWAYS, LATEST EDITION, EXCEPT AS NOTED.

2. ALL TEMPORARY TRAFFIC CONTROL AND WORK AREA PROTECTION DEVICES SHALL BE FURNISHED AND INSTALLED BY THE CONTRACTOR UNLESS OTHERWISE NOTED ON THE CONTRACT DRAWINGS AND APPROVED BY THE ENGINEER PRIOR TO COMMENCING WORK.

3. ALL MAINTENANCE AND PROTECTIONS OF TRAFFIC WORK SHALL CONFORM TO THE CONTRACT DRAWINGS, MAINTENANCE AND PROTECTION OF TRAFFIC SCHEMES SHOWN ON THE CONTRACT DRAWINGS SHALL NOT BE CHANGED BY THE CONTRACTOR WITHOUT THE WRITTEN PERMISSION OF THE ENGINEER.

4. THE TEMPORARY MAINTENANCE OF TRAFFIC AND WORK AREA PROTECTION DEVICE LOCATIONS SHOWN ON THE CONTRACT DRAWINGS ARE SCHEMATIC EXCEPT AS NOTED. LOCATION OF TRAFFIC CONTROL DEVICES MAY BE MODIFIED TO MEET FIELD CONDITIONS AS APPROVED BY THE ENGINEER.

5. ALL CLOSURES SHALL BE COORDINATED WITH THE ENGINEER. A SCHEDULE OF WORK SHALL BE SUBMITTED AT LEAST TWO WEEKS IN ADVANCE FOR APPROVAL BY THE ENGINEER.

6. THERE MAY BE ONGOING CONSTRUCTION CONTRACTS WITHIN THE VICINITY OF THE WORK AREA. DO NOT MOVE, MODIFY, OR RELOCATE ANY ITEM ASSOCIATED WITH THESE CONTRACTS WITHOUT PROPER APPROVAL OF AND COORDINATION WITH THE ENGINEER.

7. PERFORM WORK IN SUCH A MANNER AND SEQUENCE AS TO INTERFERE AS LITTLE AS POSSIBLE WITH THE PASSAGE OF VEHICLES, PEDESTRIANS, AND OTHER KINDS OF PUBLIC TRAFFIC.

8. ALL TEMPORARY MAINTENANCE OF TRAFFIC AND WORK AREA PROTECTION SIGN SUPPORTS AND MOUNTING SHALL BE IN CONFORMANCE WITH NYSDOT STANDARD SHEETS AND STANDARD SPECIFICATIONS.

9. ALL CONSTRUCTION SIGNS SHALL BE COVERED WITH THICK PLASTIC WHEN THE WORK THEY ARE INTENDED FOR IS NOT IN PROGRESS.

10. ALL TRAFFIC CONTROL DEVICES SHALL BE INSTALLED PRIOR TO THE COMMENCEMENT OF THE WORK TO WHICH THEY APPLY, AND SHALL BE MAINTAINED BY THE CONTRACTOR THEREAFTER. THE DEVICES SHALL REMAIN IN PLACE AS LONG AS THEY ARE APPLICABLE.

11. TRAFFIC CONTROL DEVICES SHALL NOT BE PLACED AT ANY LOCATIONS WHERE THEY MAY OBSCURE OR INTERFERE WITH THE MOTORIST VIEW OF APPROACHING, MERGING, OR INTERSECTING TRAFFIC; OBSTRUCT OTHER TEMPORARY OR PERMANENT TRAFFIC CONTROL DEVICES WHICH ARE STILL APPLICABLE TO ROADWAY CONDITIONS; MISLEAD OR MISDIRECT MOTORISTS, OR ARE BLOCKED BY OTHER TEMPORARY OR PERMANENT OBJECTS.

12. ALL EXISTING ROADWAY ITEMS SUCH AS GUIDE RAILS, PAVEMENT MARKINGS, CURBS, SIGNALS AND SIGNS DAMAGED BY THE CONTRACTOR SHALL BE RESTORED BY THE CONTRACTOR TO THE SATISFACTION OF THE ENGINEER AT NO ADDITIONAL COST.

13. TRAFFIC LANES AND OTHER AREAS CLOSED BY THE CONTRACTOR DURING PERMITTED WORK HOURS SHALL BE CLEARED OF ALL MATERIAL, EQUIPMENT, AND DEBRIS, AND SAFELY REOPENED TO TRAFFIC BY THE END OF THE WORK PERIOD UNLESS OTHERWISE INDICATED ON THE CONTRACT DRAWINGS.

14. IF THE CONTRACTOR REQUIRES A LANE CLOSURE TO PERFORM OPERATIONS, THEY MAY DO SO WITH THE APPROVAL OF THE ENGINEER. ANY LANE CLOSURES WILL BE SHORT TERM AND IN ACCORDANCE WITH NYS STANDARD SHEETS UNLESS OTHERWISE SHOWN IN CONTRACT PLANS.

15. NO WORK ACTIVITY OR STORAGE OF EQUIPMENT, VEHICLES, OR MATERIAL SHOULD OCCUR WITHIN A BUFFER SPACE.

16. CHANNELIZING DEVICE SPACING (CENTER TO CENTER) SHALL NOT EXCEED 20' IN THE ACTIVE WORK SPACE.

17. WHEN THE DISTANCE BETWEEN THE ADVANCE WARNING SIGNS AND WORK IS 2 MILES TO 5 MILES, A SUPPLEMENTAL DISTANCE PLAQUE (W7-30) SHOULD BE USED WITH THE SHOULDER WORK SIGN (W21-5).

18. THE ROAD WORK NEXT XX MILES SIGN (G20-1) MAY BE USED INSTEAD OF THE ROAD WORK AHEAD SIGN (W20-1) IF WORK LOCATIONS OCCUR OVER A DISTANCE OF MORE THAN 2 MILES.

19. ALL ADDITIONAL TEMPORARY SIGNAGE, NOT COVERED IN FHWA MUTCD, SHALL COMPLY WITH NYS SUPPLEMENT TO MANUAL OF UNIFORM TRAFFIC CONTROL DEVICES.
20. DURING NON-WORK HOURS, LEAVE DRUMS AND TCB IN PLACE, OR AS DIRECTED AT THE ENGINEER.

21. DURING WINTER MORATORIUM, COVER EXCAVATION WITH TEMPORARY ASPHALT AND OPEN ALL LANES TO TRAFFIC.

22. THE WZTC DETAILS CONTAINED IN THE CONTRACT PLANS SUPPLEMENT THE CURRENT NYSDOT STANDARD SHEETS. REFERENCE SHALL BE MADE TO THE APPLICABLE NYSDOT STANDARD SHEETS FOR ALL NOTES AND TABLES. THE LATEST REVISIONS OF THE STANDARD SHEETS MAINTAINED BY NYSDOT, WHICH ARE CURRENT ON THE DATE OF ADVERTISEMENT FOR BIDS, SHALL BE CONSIDERED TO BE IN EFFECT. ALL PAY ITEMS AND WORK CONTAINED IN THE CONTRACT AND ANY ADDITIONAL PAY ITEMS AND WORK ENCOUNTERED DURING THE COURSE OF THE CONTRACT SHALL BE SUBJECT TO THE APPLICABLE STANDARD SHEET(S) UNLESS OTHERWISE SPECIFIED IN THE CONTRACT DOCUMENTS.

23. MAINTAIN SAFE AND ADEQUATE ACCESS FOR INTERSECTING ROADWAYS, HOMES, AND BUSINESSES, AT ALL TIMES, TO THE SATISFACTION OF THE ENGINEER.

24. ACCESS TO RESIDENTIAL AND COMMERCIAL DRIVEWAYS SHALL BE MAINTAINED AT ALL TIMES. UNLESS OTHER AGREEMENTS SUITABLE TO THE PROPERTY OWNERS CAN BE MADE, PROPERTY OWNERS WHOSE DRIVEWAYS WILL BE MADE INACCESSIBLE SHALL BE NOTIFIED BY THE CONTRACTOR AT LEAST 24 HOURS PRIOR TO RESTRICTING USE OF THE DRIVEWAY. THE CONTRACTOR SHALL MAINTAIN ACCESS TO COMMERCIAL DRIVEWAYS AT ALL TIMES WHEN A FACILITY IS IN USE. FOR MULTIPLE ACCESS PROPERTIES, ONLY ONE DRIVEWAY MAY BE CLOSED AT ANY ONE TIME. ACCESS SHALL BE RESTORED TO ALL DRIVEWAYS AS SOON AS POSSIBLE, OR AS DIRECTED BY THE ENGINEER.

25. THE CONTRACTOR'S ATTENTION IS DIRECTED TO THE FACT THAT THE FOLLOWING HOLIDAY WORK RESTRICTIONS ARE APPLICABLE TO THIS PROJECT. DURING THESE HOLIDAY PERIODS, THE CONTRACTOR WILL NOT BE ALLOWED TO PERFORM ANY WORK THAT WILL BE DISRUPTIVE TO TRAFFIC, INCLUDING BUT NOT LIMITED TO LANE CLOSURES. LANE CLOSURES WILL NOT BE PERMITTED DURING THE FOLLOWING STATE RECOGNIZED HOLIDAYS:

1) LABOR DAY - MONDAY, SEPTEMBER 5, 2022

2) THANKSGIVING DAY - THURSDAY, NOVEMBER 24, 2022

3) CHRISTMAS DAY - SUNDAY, DECEMBER 25, 2022

4) NEW YEAR'S DAY - SUNDAY, JANUARY 1, 2023

5) MEMORIAL DAY - MONDAY, MAY 29, 2023

6) INDEPENDENCE DAY - TUESDAY, JULY 4, 2023

7) LABOR DAY - MONDAY, SEPTEMBER 4, 2023

8) THANKSGIVING DAY - THURSDAY, NOVEMBER 23, 2023

9) CHRISTMAS DAY - MONDAY, DECEMBER 25, 2023

10) NEW YEAR'S DAY - MONDAY, JANUARY 1, 2024

11) MEMORIAL DAY - MONDAY, MAY 27, 2024

12) INDEPENDENCE DAY - THURSDAY, JULY 4, 2024

13) LABOR DAY - MONDAY, SEPTEMBER 2, 2024

14) THANKSGIVING DAY - THURSDAY, NOVEMBER 28, 2024

15) CHRISTMAS DAY - WEDNESDAY, DECEMBER 25, 2024

16) NEW YEAR'S DAY - WEDNESDAY, JANUARY 1, 2025

17) MEMORIAL DAY - MONDAY, MAY 26, 2025

18) INDEPENDENCE DAY - FRIDAY, JULY 4, 2025

19) LABOR DAY - MONDAY, SEPTEMBER 1, 2025

20) THANKSGIVING DAY - THURSDAY, NOVEMBER 27, 2025

21) CHRISTMAS DAY - THURSDAY, DECEMBER 25, 2025

26. LANE CLOSURES SHALL BE SUSPENDED AS FOLLOWS:

- BEGINNING 6AM, FRIDAY SEPTEMBER 2, 2022 AND ENDING 6AM, TUESDAY SEPTEMBER 6, 2022

- BEGINNING 6AM, WEDNESDAY NOVEMBER 23, 2022 AND ENDING 6AM, MONDAY NOVEMBER 28, 2022

- BEGINNING 6AM, FRIDAY DECEMBER 23, 2022 AND ENDING 6AM, TUESDAY DECEMBER 27, 2022

- BEGINNING 6AM, FRIDAY DECEMBER 30, 2022 AND ENDING 6AM, TUESDAY JANUARY 3, 2023

- BEGINNING 6AM, FRIDAY MAY 26, 2023 AND ENDING 6AM, TUESDAY MAY 30, 2023

- BEGINNING 6AM, SATURDAY JULY 1, 2023 AND ENDING 6AM, WEDNESDAY JULY 5, 2023

- BEGINNING 6AM, FRIDAY SEPTEMBER 1, 2023 AND ENDING 6AM, TUESDAY SEPTEMBER 5, 2023

- BEGINNING 6AM, WEDNESDAY NOVEMBER 22, 2023 AND ENDING 6AM, MONDAY NOVEMBER 27, 2023

- BEGINNING 6AM, FRIDAY DECEMBER 22, 2023 AND ENDING 6AM, TUESDAY DECEMBER 26, 2023

- BEGINNING 6AM, SUNDAY DECEMBER 30, 2023 AND ENDING 6AM, WEDNESDAY JANUARY 3, 2024

- BEGINNING 6AM, FRIDAY MAY 24, 2024 AND ENDING 6AM, TUESDAY MAY 28, 2024

- BEGINNING 6AM, MONDAY JULY 1, 2024 AND ENDING 6AM, FRIDAY JULY 5, 2024

- BEGINNING 6AM, FRIDAY AUGUST 30, 2024 AND ENDING 6AM, TUESDAY SEPTEMBER 3, 2024

- BEGINNING 6AM, WEDNESDAY NOVEMBER 27, 2024 AND ENDING 6AM, MONDAY DECEMBER 2, 2024

- BEGINNING 6AM, FRIDAY DECEMBER 20, 2024 AND ENDING 6AM, THURSDAY DECEMBER 26, 2024

- BEGINNING 6AM, TUESDAY DECEMBER 30, 2024 AND ENDING 6AM, FRIDAY JANUARY 3, 2025

- BEGINNING 6AM, FRIDAY MAY 23, 2025 AND ENDING 6AM, TUESDAY MAY 27, 2025

- BEGINNING 6AM, THURSDAY JULY 3, 2025 AND ENDING 6AM, MONDAY JULY 7, 2025

- BEGINNING 6AM, FRIDAY AUGUST 29, 2025 AND ENDING 6AM, TUESDAY SEPTEMBER 2, 2025

- BEGINNING 6AM, WEDNESDAY NOVEMBER 26, 2025 AND ENDING 6AM, MONDAY DECEMBER 1, 2025

- BEGINNING 6AM, WEDNESDAY DECEMBER 24, 2025 AND ENDING 6AM, MONDAY DECEMBER 29, 2025

27. DURING WINTER STORM EVENTS, NO WORK WITHIN THE ROAD RIGHT-OF-WAY IS PERMITTED TO ALLOW FOR SNOW REMOVAL, PLOWING ACTIVITIES.

28. ANY EARTHWORK DONE BETWEEN NOVEMBER 1ST AND APRIL 1ST MUST CONFORM TO NYSDOT STANDARD SPECIFICATION SECTION 203-1.01 P.

29. ALL OPEN TRENCH EXCAVATIONS SHALL BE BACKFILLED OR COVERED BY A STEEL PLATE (HS-20 LOAD RATED) AT THE END OF EACH WORK DAY, OR AS DIRECTED BY THE ENGINEER.

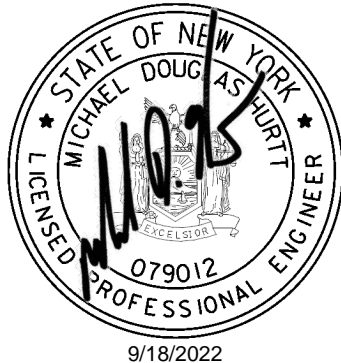
LEGEND

- TEMPORARY SIGN
- TEMPORARY TRAFFIC SIGNAL UNIT
- WORK ZONE
- DRUM
- TEMPORARY CONCRETE BARRIER (TCB)
- FLAGGER
- FLAG TREE
- WORK VEHICLE WITH TRUCK MOUNTED ATTENUATOR
- FLASH UNIT (LEFT ARROW)
- FLASH UNIT (CAUTION MODE)
- TYPE III BARRICADE
- TRAILER UNIT
- WARNING LIGHT ON SIGN
- TEMPORARY TRAFFIC FLOW ARROW

ABBREVIATIONS

AADT	AVERAGE ANNUAL DAILY TRAFFIC
CR	COUNTY ROUTE
DHV	DIRECTIONAL HOURLY VOLUME
FASU	FLASHING ARROW SIGN UNIT
FHWA	FEDERAL HIGHWAY ADMINISTRATION
M.P.	MILE POST
MAX.	MAXIMUM
MIN.	MINIMUM
MPH	MILES PER HOUR
MUTCD	MANUAL ON UNIFORM TRAFFIC CONTROL DEVICES
NYS	NEW YORK STATE
NYSDOT	NEW YORK STATE DEPARTMENT OF TRANSPORTATION
RTE	ROUTE
TCB	TEMPORARY CONCRETE BARRIER
STA.	STATION

NOT FOR CONSTRUCTION  
FOR EM&CP PERMIT ONLY



IT IS A VIOLATION OF LAW FOR ANY PERSON, UNLESS THEY ARE ACTING UNDER THE DIRECTION OF A LICENSED PROFESSIONAL ENGINEER, ARCHITECT, LANDSCAPE ARCHITECT OR LAND SURVEYOR TO ALTER AN ITEM IN ANY WAY. IF AN ITEM BEARING THE STAMP OF A LICENSED PROFESSIONAL IS ALTERED, THE ALTERING ENGINEER, ARCHITECT, LANDSCAPE ARCHITECT OR LAND SURVEYOR SHALL STAMP THE DOCUMENT AND INCLUDE THE NOTATION "ALTERED BY" FOLLOWED BY THEIR SIGNATURE, THE DATE OF SUCH ALTERATION, AND A SPECIFIC DESCRIPTION OF THE ALTERATION.

0	09/21/2022	FINAL EM&CP SUBMISSION	JS	MH	
No.	DATE	SUBMITTAL / REVISION DESCRIPTION	DB	APP	

CHAMPLAIN HUDSON POWER EXPRESS  
SEGMENT 1 (PACKAGE 1A) PUTNAM TO DRESDEN

WORK ZONE TRAFFIC CONTROL NOTES  
LEGEND AND ABBREVIATIONS

DRAWN BY: JAH	DESIGNED BY: JPS	APPROVED BY: MDH	SCALE	AS SHOWN	DATE	09/21/2022
			REV. NO.		SH.NO.	OF XXX

KIEWIT PROJECT NO.	21162
CHA PROJECT NO.	066076
DRAWING NO.	C-501

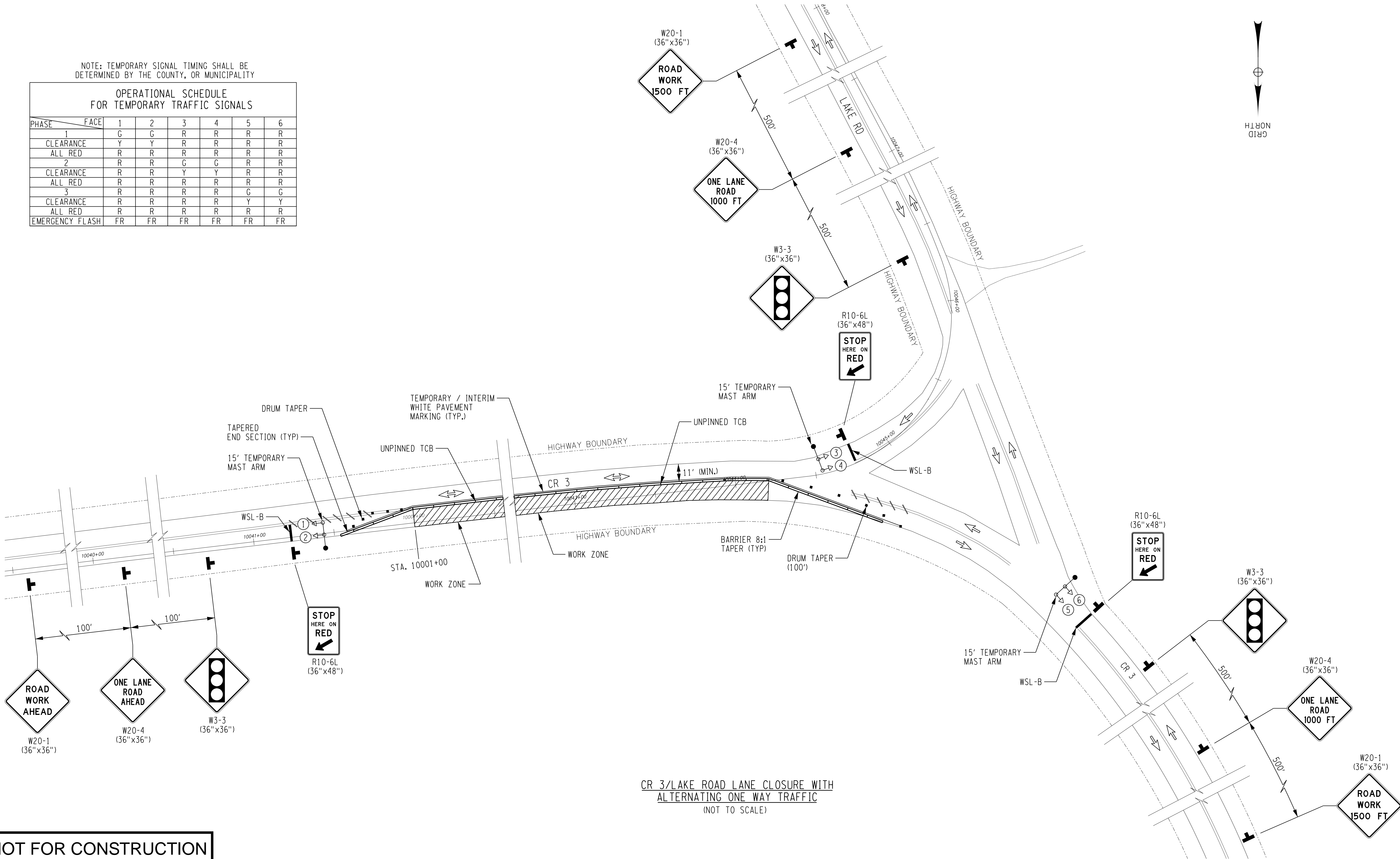




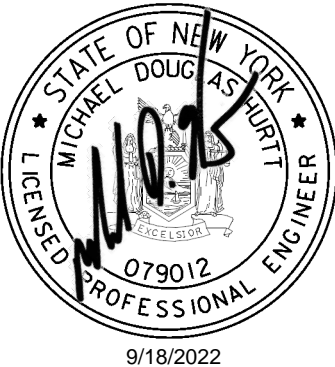


NOTE: TEMPORARY SIGNAL TIMING SHALL BE DETERMINED BY THE COUNTY, OR MUNICIPALITY

OPERATIONAL SCHEDULE FOR TEMPORARY TRAFFIC SIGNALS							
PHASE	FACE	1	2	3	4	5	6
1		G	G	R	R	R	R
CLEARANCE		Y	Y	R	R	R	R
ALL RED		R	R	R	R	R	R
2		R	R	G	G	R	R
CLEARANCE		R	R	Y	Y	R	R
ALL RED		R	R	R	R	R	R
3		R	R	R	R	G	G
CLEARANCE		R	R	R	R	Y	Y
ALL RED		R	R	R	R	R	R
EMERGENCY FLASH		FR	FR	FR	FR	FR	FR



NOT FOR CONSTRUCTION  
FOR EM&CP PERMIT ONLY



IT IS A VIOLATION OF LAW FOR ANY PERSON, UNLESS THEY ARE ACTING UNDER THE DIRECTION OF A LICENSED PROFESSIONAL ENGINEER, ARCHITECT, LANDSCAPE ARCHITECT OR LAND SURVEYOR TO ALTER AN ITEM IN ANY WAY. IF AN ITEM BEARING THE STAMP OF A LICENSED PROFESSIONAL IS ALTERED, THE ALTERING ENGINEER, ARCHITECT, LANDSCAPE ARCHITECT OR LAND SURVEYOR SHALL STAMP THE DOCUMENT AND INCLUDE THE NOTATION "ALTERED BY" FOLLOWED BY THEIR SIGNATURE, THE DATE OF SUCH ALTERATION, AND A SPECIFIC DESCRIPTION OF THE ALTERATION.

0	09/21/2022	FINAL EM&CP SUBMISSION				JS	MH		
No.	DATE	SUBMITTAL / REVISION DESCRIPTION				DB	APP		

CHAMPLAIN HUDSON POWER EXPRESS  
SEGMENT 1 (PACKAGE 1A) PUTNAM TO DRESDEN

WORK ZONE TRAFFIC CONTROL DETAILS  
SHEET 1 OF 14

DRAWN BY: JAH    DESIGNED BY: JPS    APPROVED BY: MDH    SCALE AS SHOWN    REV. NO.

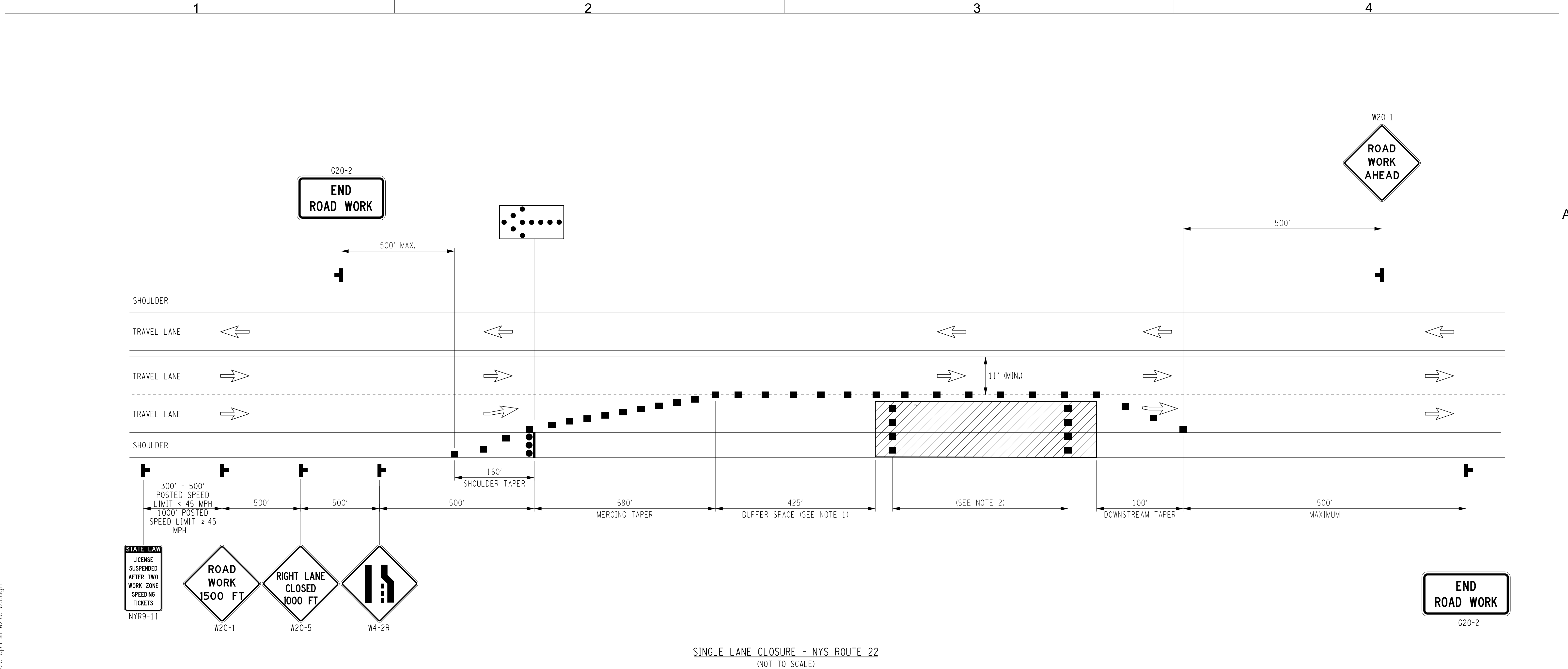
KIEWIT PROJECT NO.	21162
CHA PROJECT NO.	066076
DRAWING NO.	C-503
DATE SH.	09/21/2022 OF XXX





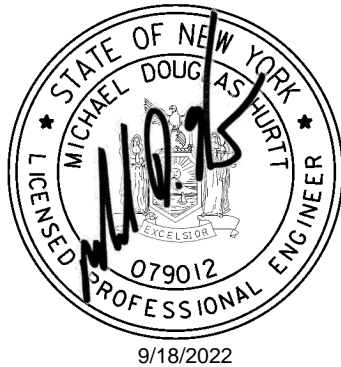


FILE NAME = V:\Projects\ANY\6\066076\000\09\_Design\Drawings\Hwy\Segment 1\66076\_cph.sl.wtc\_05.dgn



- NOTES:
1. NO WORK ACTIVITY, EQUIPMENT OR STORAGE OF VEHICLES, OR MATERIAL SHALL OCCUR WITHIN THE BUFFER SPACE AT ANY TIME.
  2. TRANSVERSE DEVICES SHALL BE REQUIRED (AS PER 619 STANDARD SPECIFICATIONS) WHEN A PAVED SHOULDER HAVING A WIDTH OF 8' OR GREATER IS CLOSED FOR A DISTANCE GREATER THAN 1500'.

NOT FOR CONSTRUCTION  
FOR EM&CP PERMIT ONLY



IT IS A VIOLATION OF LAW FOR ANY PERSON, UNLESS THEY ARE ACTING UNDER THE DIRECTION OF A LICENSED PROFESSIONAL ENGINEER, ARCHITECT, LANDSCAPE ARCHITECT OR LAND SURVEYOR TO ALTER AN ITEM IN ANY WAY. IF AN ITEM BEARING THE STAMP OF A LICENSED PROFESSIONAL IS ALTERED, THE ALTERING ENGINEER, ARCHITECT, LANDSCAPE ARCHITECT OR LAND SURVEYOR SHALL STAMP THE DOCUMENT AND INCLUDE THE NOTATION "ALTERED BY" FOLLOWED BY THEIR SIGNATURE, THE DATE OF SUCH ALTERATION, AND A SPECIFIC DESCRIPTION OF THE ALTERATION.

0	09/21/2022	FINAL EM&CP SUBMISSION	JS	MH	
No.	DATE	SUBMITTAL / REVISION DESCRIPTION	DB	APP	

CHAMPLAIN HUDSON POWER EXPRESS  
SEGMENT 1 (PACKAGE 1A) PUTNAM TO DRESDEN

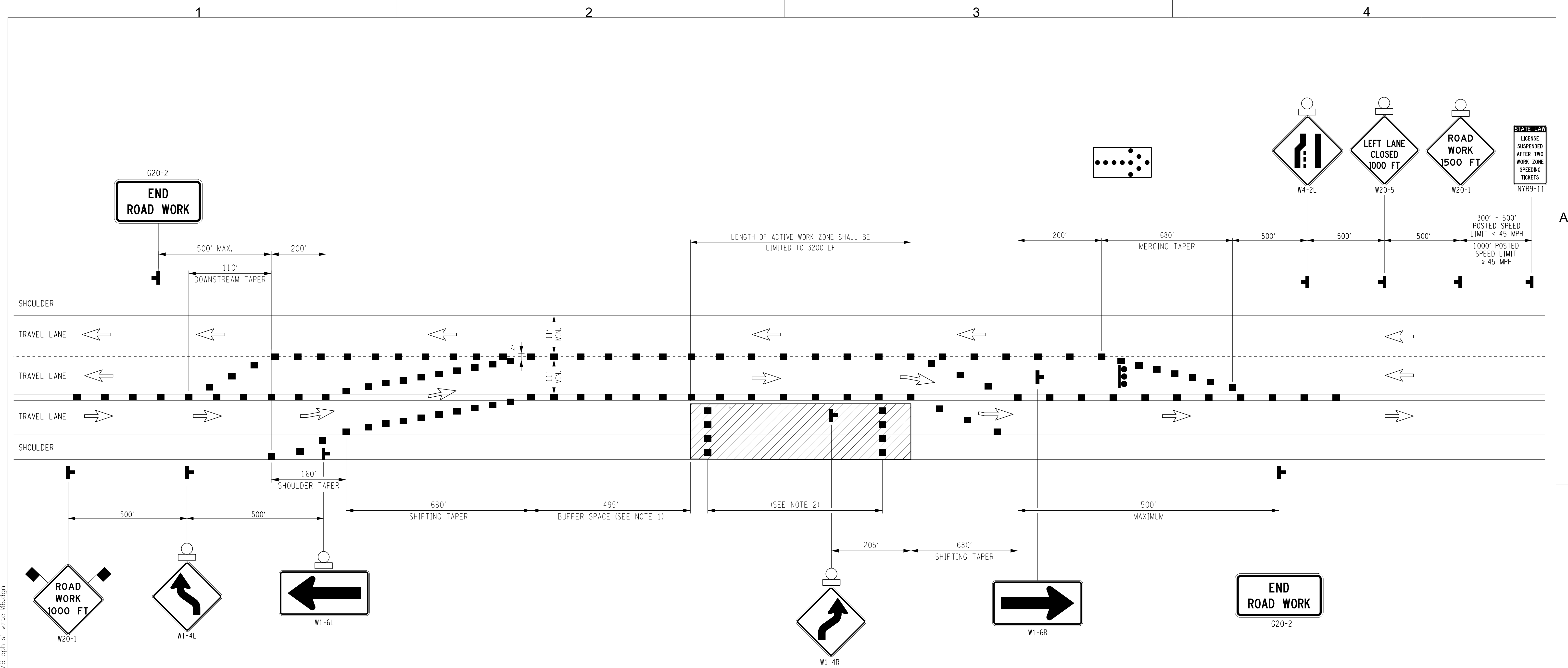
WORK ZONE TRAFFIC CONTROL DETAILS  
SHEET 3 OF 14

DRAWN BY: JAH    DESIGNED BY: JPS    APPROVED BY: MDH    SCALE AS SHOWN    REV. NO.

KIEWIT PROJECT NO.	21162
CHA PROJECT NO.	066076
DRAWING NO.	C-505
DATE	09/21/2022
SH.NO.	OF XXX



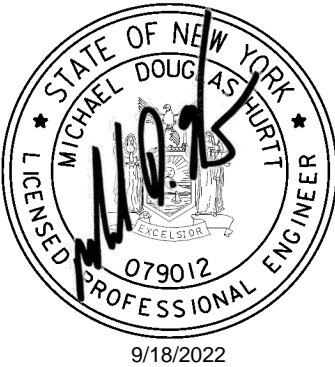
FILE NAME = V:\Projects\ANY\066076\000\09\_Design\Drawings\Hwy\Segment 1\066076\_cph.sl.wtc\_06.dgn



SINGLE LANE CLOSURE - NYS ROUTE 22  
(NOT TO SCALE)

- NOTES:
1. NO WORK ACTIVITY, EQUIPMENT OR STORAGE OF VEHICLES, OR MATERIAL SHALL OCCUR WITHIN THE BUFFER SPACE AT ANY TIME.
  2. TRANSVERSE DEVICES SHALL BE REQUIRED (AS PER 619 STANDARD SPECIFICATIONS) WHEN A PAVED SHOULDER HAVING A WIDTH OF 8' OR GREATER IS CLOSED FOR A DISTANCE GREATER THAN 1500'.

NOT FOR CONSTRUCTION  
FOR EM&CP PERMIT ONLY



IT IS A VIOLATION OF LAW FOR ANY PERSON, UNLESS THEY ARE ACTING UNDER THE DIRECTION OF A LICENSED PROFESSIONAL ENGINEER, ARCHITECT, LANDSCAPE ARCHITECT OR LAND SURVEYOR TO ALTER AN ITEM IN ANY WAY. IF AN ITEM BEARING THE STAMP OF A LICENSED PROFESSIONAL IS ALTERED, THE ALTERING ENGINEER, ARCHITECT, LANDSCAPE ARCHITECT OR LAND SURVEYOR SHALL STAMP THE DOCUMENT AND INCLUDE THE NOTATION "ALTERED BY" FOLLOWED BY THEIR SIGNATURE, THE DATE OF SUCH ALTERATION, AND A SPECIFIC DESCRIPTION OF THE ALTERATION.

0	09/21/2022	FINAL EM&CP SUBMISSION	JS	MH	
No.	DATE	SUBMITTAL / REVISION DESCRIPTION	DB	APP	

CHAMPLAIN HUDSON POWER EXPRESS  
SEGMENT 1 (PACKAGE 1A) PUTNAM TO DRESDEN

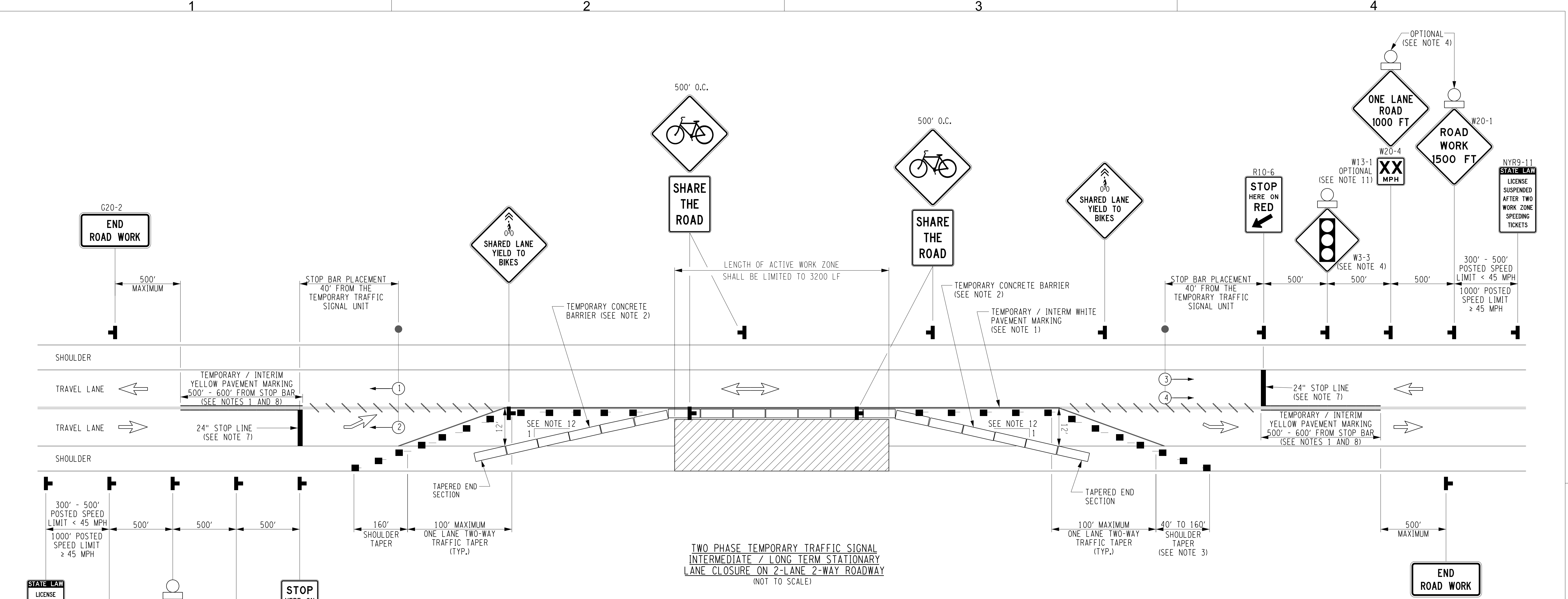
WORK ZONE TRAFFIC CONTROL DETAILS  
SHEET 4 OF 14

DRAWN BY: JAH    DESIGNED BY: JPS    APPROVED BY: MDH    SCALE AS SHOWN    REV. NO.

KIEWIT PROJECT NO.	21162
CHA PROJECT NO.	066076
DRAWING NO.	C-506
DATE SH.NO.	09/21/2022 OF XXX



FILE NAME = V:\Projects\NY\16\066076\000\09\_Design\Drawings\Hwy\Segment 1\66076\_cph.sl.wtc-07.dgn



TWO PHASE TEMPORARY TRAFFIC SIGNAL  
INTERMEDIATE / LONG TERM STATIONARY  
LANE CLOSURE ON 2-LANE 2-WAY ROADWAY  
(NOT TO SCALE)

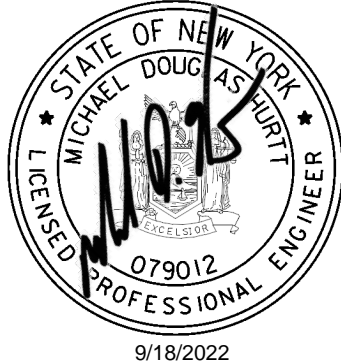
NOTES:

- FOR LONG DURATION LANE CLOSURES, TEMPORARY / INTERIM PAVEMENT MARKINGS SHALL BE USED IN ACCORDANCE TO THE CONTRACT DOCUMENTS. ANY EXISTING PAVEMENT MARKINGS THAT ARE CONFLICTING OR MISLEADING SHALL BE REMOVED OR COVERED.
- THE TEMPORARY CONCRETE BARRIER SHALL NOT BE PLACED ALONG THE MERGING TAPER. THE LANE SHALL BE CLOSED USING CHANNELIZING DEVICES AND PAVEMENT MARKINGS.
- WHEN PAVED SHOULDERS HAVING A WIDTH OF 8' OR MORE ARE CLOSED, CHANNELIZING DEVICES SHALL BE USED TO CLOSE THE SHOULDER IN ADVANCE TO DELINEATE THE BEGINNING OF THE WORK SPACE AND TO DIRECT VEHICULAR TRAFFIC TO REMAIN IN THE TRAVELED WAY.
- REFER TO MUTCD FOR ADDITIONAL TRAFFIC SIGNAL REQUIREMENTS.
- DETECTORS SHALL BE INSTALLED ON ALL APPROACH LANES AND ALL PHASES SHALL BE ACTUATED. DURATION OF RED CLEARANCE INTERVALS SHALL BE ADEQUATE TO CLEAR THE ONE-LANE SECTION OF CONFLICTING TRAFFIC.
- THE TRAFFIC SIGNAL CYCLE SHALL REST IN RED. WHEN THE SIGNAL IS CHANGED TO THE FLASHING MODE, EITHER MANUALLY OR AUTOMATICALLY, RED SIGNAL INDICATIONS SHALL BE FLASHED TO ALL APPROACHES.
- STOP LINES SHALL BE INSTALLED WITH TEMPORARY TRAFFIC SIGNALS FOR INTERMEDIATE AND LONG-TERM CLOSURES. EXISTING, CONFLICTING PAVEMENT MARKINGS AND RAISED PAVEMENT MARKINGS, BETWEEN THE ACTIVITY AREA AND THE STOP LINE, SHALL BE REMOVED. AFTER THE TEMPORARY TRAFFIC SIGNAL IS REMOVED, THE STOP LINES AND ALL TEMPORARY PAVEMENT MARKINGS SHALL BE REMOVED AND PERMANENT PAVEMENT MARKINGS RESTORED.
- WHERE NO-PASSING LINES ARE NOT ALREADY IN PLACE, THEY SHALL BE ADDED FOR A DISTANCE OF 500'-600' FROM THE STOP BAR. ANY EXISTING PAVEMENT MARKINGS THAT ARE CONFLICTING OR MISLEADING SHALL BE REMOVED OR COVERED.
- ADJUSTMENTS IN THE LOCATION OF ADVANCED WARNING SIGNS SHOULD BE MADE TO ACCOMMODATE THE HORIZONTAL AND VERTICAL ALIGNMENT OF THE ROADWAY, RECOGNIZING THAT THE DISTANCES SHOWN FOR SIGN SPACING ARE MINIMUMS. ADJUSTMENTS IN THE HEIGHT OF THE SIGNAL HEADS SHALL BE MADE AS NEEDED TO CONFORM TO THE VERTICAL ALIGNMENT.
- THE SUPPORTS FOR TEMPORARY TRAFFIC CONTROL SIGNALS SHALL NOT ENROACH INTO THE MINIMUM REQUIRED WIDTH OF A "PEDESTRIAN ACCESS ROUTE" OF 4' OR AN "ALTERNATE CIRCULATION PATH" OF 3'.
- THE ENGINEER MAY REQUIRE THE USE OF AN ADVISORY SPEED PLAQUE (W13-1) TO SUPPLEMENT A WARNING SIGN. THE PLAQUE WILL BE USED TO INDICATE AN ADVISORY SPEED FOR THE WORK ZONE CONDITION. (IE. NARROW LANES, BUMPS, POOR ROADWAY SURFACE, LOW OR NO SHOULDER, DROP-OFFS, GEOMETRIC CONSTRAINTS, AND/OR POOR SIGHT CONDITIONS).
- TEMPORAY CONCRETE BARRIER TAPER SHALL BE 8:1 (30 MPH), 11:1 (40 MPH), 14:1 (50 MPH), AND 16:1 (55 MPH).
- LIMITS OF LONG-TERM LANE CLOSURE WITH TEMPORARY CONCRETE BARRIER SHALL BE ESTABLISHED BETWEEN EXISTING DRIVEWAYS AND SIDEROADS; UNLESS TEMPORARY SIGNALIZATION OF EXISTING DRIVEWAYS AND/OR SIDE ROADS CAN BE PROVIDED AND COORDINATED WITH THE MAINLINE TEMPORARY SIGNALS, AS DIRECTED BY THE ENGINEER.
- LONG-TERM LANE CLOSURES ARE ANTICIPATED TO BE IN PLACE AT ANY ONE LOCATION FOR APPROXIMATELY ONE WEEK ( 7 DAYS).
- WORK SPACE LIMITS SHALL BE ESTABLISHED TO ALLOW FOR STANDARD DEFLECTION OF TEMPORARY CONCRETE BARRIER AS DEFINED IN SECTION 619 OF THE NYSDOT STANDARD SPECIFICATIONS.

NOTE: TEMPORARY SIGNAL TIMING SHALL BE DETERMINED BY THE REGIONAL TRAFFIC OFFICE, COUNTY, OR MUNICIPALITY

OPERATIONAL SCHEDULE FOR TEMPORARY TRAFFIC SIGNALS					
PHASE	FACE	1	2	3	4
1	CLEARANCE	Y	Y	R	R
	ALL RED	R	R	R	R
	2	R	R	G	G
2	CLEARANCE	R	R	Y	Y
	ALL RED	R	R	R	R
	EMERGENCY FLASH	FR	FR	FR	FR

NOT FOR CONSTRUCTION  
FOR EM&CP PERMIT ONLY



IT IS A VIOLATION OF LAW FOR ANY PERSON, UNLESS THEY ARE ACTING UNDER THE DIRECTION OF A LICENSED PROFESSIONAL ENGINEER, ARCHITECT, LANDSCAPE ARCHITECT OR LAND SURVEYOR TO ALTER AN ITEM IN ANY WAY. IF AN ITEM BEARING THE STAMP OF A LICENSED PROFESSIONAL IS ALTERED, THE ALTERING ENGINEER, ARCHITECT, LANDSCAPE ARCHITECT OR LAND SURVEYOR SHALL STAMP THE DOCUMENT AND INCLUDE THE NOTATION "ALTERED BY" FOLLOWED BY THEIR SIGNATURE, THE DATE OF SUCH ALTERATION, AND A SPECIFIC DESCRIPTION OF THE ALTERATION.

No.	DATE	SUBMITTAL / REVISION DESCRIPTION	DB	APP
0	09/21/2022	FINAL EM&CP SUBMISSION	JS	MH

CHAMPLAIN HUDSON POWER EXPRESS  
SEGMENT 1 (PACKAGE 1A) PUTNAM TO DRESDEN

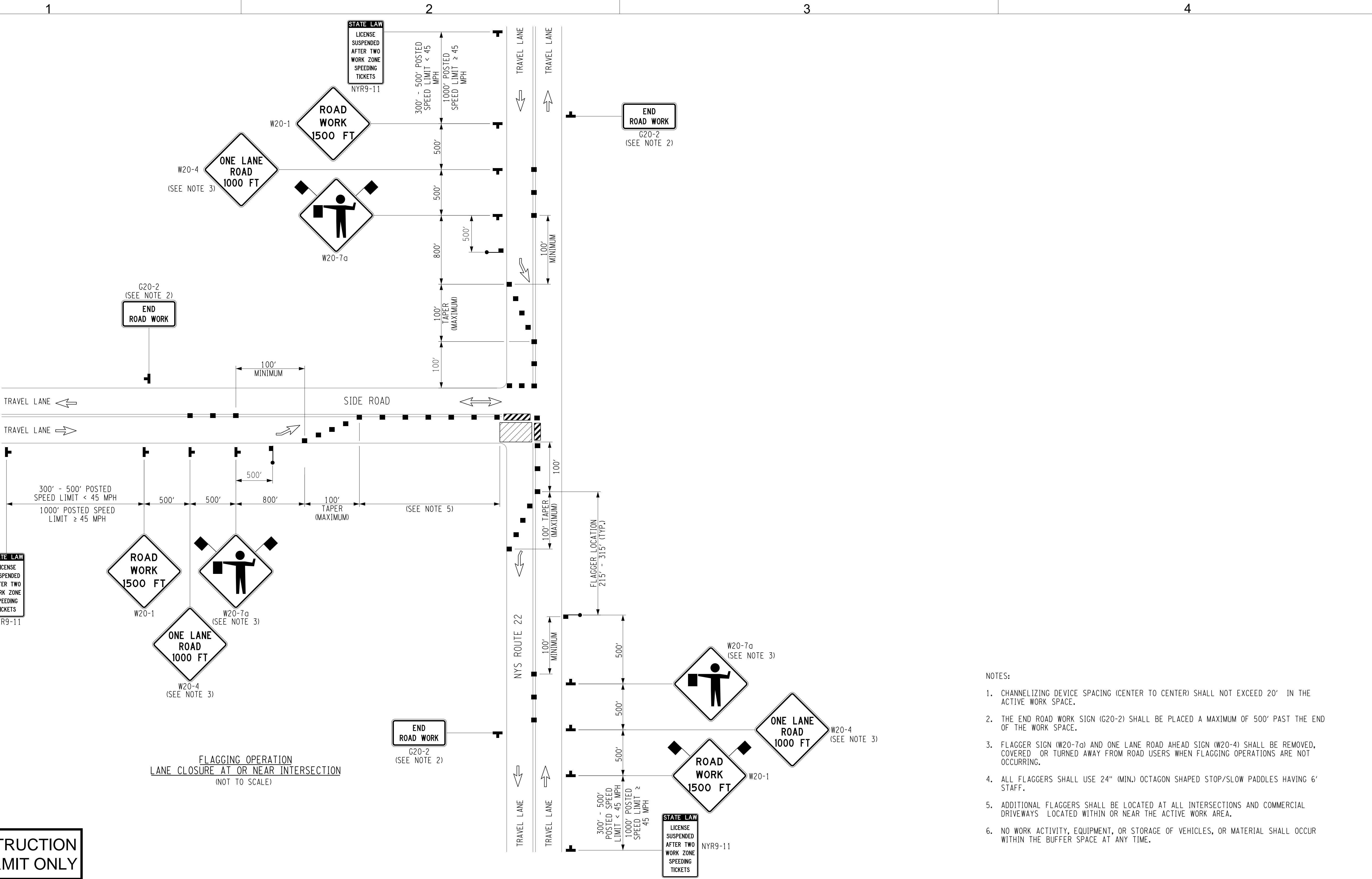
WORK ZONE TRAFFIC CONTROL DETAILS  
SHEET 5 OF 14

DRAWN BY: JAH	DESIGNED BY: JPS	APPROVED BY: MDH	SCALE AS SHOWN REV. NO.	DATE 09/21/2022 SH.NO. OF XXX
---------------	------------------	------------------	----------------------------	----------------------------------

KIEWIT PROJECT NO. 21162	CHA PROJECT NO. 066076	DRAWING NO. <b>C-507</b>
-----------------------------	---------------------------	-----------------------------

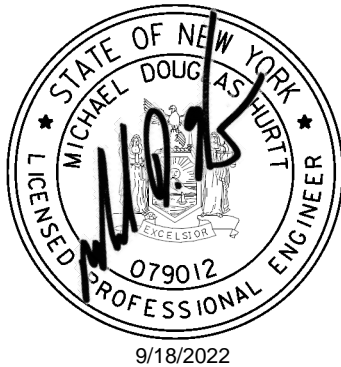


FILE NAME = V:\Projects\ANY\6\066076\000\09\_Design\Drawings\Hwy\Segment 1\66076\_cph.sl\_wztc\_08.dgn

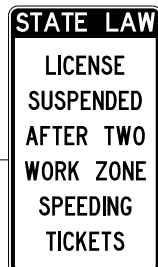


- NOTES:
1. CHANNELIZING DEVICE SPACING (CENTER TO CENTER) SHALL NOT EXCEED 20' IN THE ACTIVE WORK SPACE.
  2. THE END ROAD WORK SIGN (G20-2) SHALL BE PLACED A MAXIMUM OF 500' PAST THE END OF THE WORK SPACE.
  3. FLAGGER SIGN (W20-7a) AND ONE LANE ROAD AHEAD SIGN (W20-4) SHALL BE REMOVED, COVERED OR TURNED AWAY FROM ROAD USERS WHEN FLAGGING OPERATIONS ARE NOT OCCURRING.
  4. ALL FLAGGERS SHALL USE 24" (MIN.) OCTAGON SHAPED STOP/SLOW PADDLES HAVING 6' STAFF.
  5. ADDITIONAL FLAGGERS SHALL BE LOCATED AT ALL INTERSECTIONS AND COMMERCIAL DRIVEWAYS LOCATED WITHIN OR NEAR THE ACTIVE WORK AREA.
  6. NO WORK ACTIVITY, EQUIPMENT, OR STORAGE OF VEHICLES, OR MATERIAL SHALL OCCUR WITHIN THE BUFFER SPACE AT ANY TIME.

NOT FOR CONSTRUCTION  
FOR EM&CP PERMIT ONLY



IT IS A VIOLATION OF LAW FOR ANY PERSON, UNLESS THEY ARE ACTING UNDER THE DIRECTION OF A LICENSED PROFESSIONAL ENGINEER, ARCHITECT, LANDSCAPE ARCHITECT OR LAND SURVEYOR TO ALTER AN ITEM IN ANY WAY. IF AN ITEM BEARING THE STAMP OF A LICENSED PROFESSIONAL IS ALTERED, THE ALTERING ENGINEER, ARCHITECT, LANDSCAPE ARCHITECT OR LAND SURVEYOR SHALL STAMP THE DOCUMENT AND INCLUDE THE NOTATION "ALTERED BY:" FOLLOWED BY THEIR SIGNATURE, THE DATE OF SUCH ALTERATION, AND A SPECIFIC DESCRIPTION OF THE ALTERATION.



0	09/21/2022	FINAL EM&CP SUBMISSION					JS	MH	
No.	DATE	SUBMITTAL / REVISION DESCRIPTION					DB	APP	

CHAMPLAIN HUDSON POWER EXPRESS  
SEGMENT 1 (PACKAGE 1A) PUTNAM TO DRESDEN

WORK ZONE TRAFFIC CONTROL DETAILS  
SHEET 6 OF 14

DRAWN BY: JAH	DESIGNED BY: JPS	APPROVED BY: MDH	SCALE AS SHOWN	DATE 09/21/2022
			REV. NO.	SH.NO. OF XXX

KIEWIT PROJECT NO.	21162
CHA PROJECT NO.	066076
DRAWING NO.	C-508



FILE NAME = V:\Projects\ANY\6\066076\000\09\_Design\Drawings\Hwy\Segment 1\66076\_cph.sl\_wztc\_09.dgn

NOT FOR CONSTRUCTION  
FOR EM&CP PERMIT ONLY



IT IS A VIOLATION OF LAW FOR ANY PERSON, UNLESS THEY ARE ACTING UNDER THE DIRECTION OF A LICENSED PROFESSIONAL ENGINEER, ARCHITECT, LANDSCAPE ARCHITECT OR LAND SURVEYOR TO ALTER AN ITEM IN ANY WAY. IF AN ITEM BEARING THE STAMP OF A LICENSED PROFESSIONAL IS ALTERED, THE ALTERING ENGINEER, ARCHITECT, LANDSCAPE ARCHITECT OR LAND SURVEYOR SHALL STAMP THE DOCUMENT AND INCLUDE THE NOTATION "ALTERED BY" FOLLOWED BY THEIR SIGNATURE, THE DATE OF SUCH ALTERATION, AND A SPECIFIC DESCRIPTION OF THE ALTERATION.

0	09/21/2022	FINAL EM&CP SUBMISSION	JS	MH	
No.	DATE	SUBMITTAL / REVISION DESCRIPTION	DB	APP	

CHAMPLAIN HUDSON POWER EXPRESS  
SEGMENT 1 (PACKAGE 1A) PUTNAM TO DRESDEN

WORK ZONE TRAFFIC CONTROL DETAILS  
SHEET 7 OF 14

DRAWN BY: JAH    DESIGNED BY: JPS    APPROVED BY: MDH

SCALE AS SHOWN  
REV. NO.

KIEWIT PROJECT NO.	21162
CHA PROJECT NO.	066076
DRAWING NO.	C-509
DATE SH.NO.	09/21/2022 OF XXX





NOT FOR CONSTRUCTION  
FOR EM&CP PERMIT ONLY