

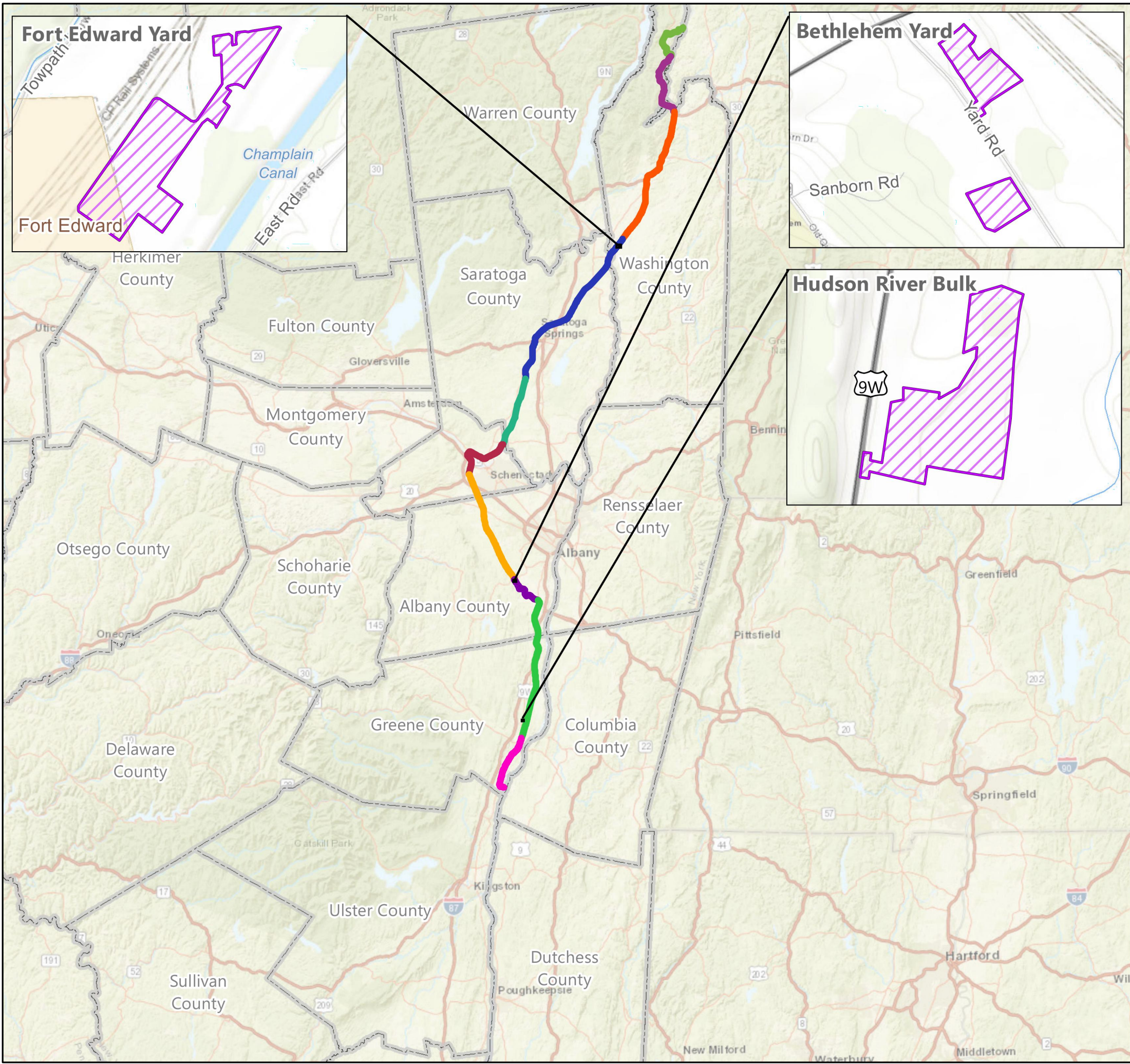
CHAMPLAIN HUDSON POWER EXPRESS

PROJECT WIDE LAYDOWN YARD PACKAGE

WASHINGTON, ALBANY AND GREENE COUNTIES, NEW YORK

FINAL EM&CP SUBMISSION

(JANUARY 20, 2023)



SITE LOCATION MAP
NOT TO SCALE



NOT FOR CONSTRUCTION
FOR EM&CP PERMIT ONLY



IT IS A VIOLATION OF LAW FOR ANY PERSON, UNLESS THEY ARE ACTING UNDER THE DIRECTION OF A LICENSED PROFESSIONAL ENGINEER, ARCHITECT, LANDSCAPE ARCHITECT OR LAND SURVEYOR TO ALTER AN ITEM IN ANY WAY. IF AN ITEM BEARING THE STAMP OF A LICENSED PROFESSIONAL IS ALTERED, THE ALTERING ENGINEER, ARCHITECT, LANDSCAPE ARCHITECT OR LAND SURVEYOR SHALL STAMP THE DOCUMENT AND INCLUDE THE NOTATION "ALTERED BY" FOLLOWED BY THEIR SIGNATURE, THE DATE OF SUCH ALTERATION, AND A SPECIFIC DESCRIPTION OF THE ALTERATION.

1	01/20/2023	REVISED PER DPS COMMENTS	JM	JR	
0	11/11/2022	FINAL EM&CP SUBMISSION	JM	JR	
No.	DATE	SUBMITTAL / REVISION DESCRIPTION	DB	APP	

CHAMPLAIN HUDSON POWER EXPRESS
PROJECT WIDE LAYDOWN YARD PACKAGE
COVER SHEET

DRAWN BY: JJE DESIGNED BY: JTM APPROVED BY: JPR SCALE AS NOTED
REV. NO. X

KIEWIT PROJECT NO.	21162
CHA PROJECT NO.	066076
DRAWING NO.	G-000
DATE	11/11/2022
XXX	




EROSION CONTROL NOTES

1. LAND DISTURBING ACTIVITIES SHALL NOT COMMENCE UNTIL APPROVAL TO DO SO HAS BEEN RECEIVED BY GOVERNING AUTHORITIES.
2. THE GENERAL CONTRACTOR SHALL STRICTLY ADHERE TO THE STORM WATER POLLUTION PREVENTION PLAN (SWPPP) AND FOLLOW THE EM&CP DOCUMENTS DURING CONSTRUCTION OPERATIONS.
3. NO LAND CLEARING OR GRADING SHALL BEGIN UNTIL ALL PERIMETER EROSION AND SEDIMENT CONTROL MEASURES HAVE BEEN INSTALLED. (WETLAND PROTECTION FENCE, SILT FENCE AND STABILIZED CONSTRUCTION ENTRANCE)
4. SITE DISTURBANCE SHALL NOT EXCEED FIVE (5) ACRES OF SOIL AT ANY ONE TIME WITHOUT PRIOR WRITTEN AUTHORIZATION FROM NYSDEC DIVISION OF WATER.
5. ALL EXPOSED AREAS SHALL BE SEEDED AND MULCHED AS SPECIFIED WITHIN 14 DAYS OF FINAL GRADING (DURING WINTER STABILIZATION, THIS TIMEFRAME IS 3 DAYS AND MUST BEGIN WITHIN 24 HOUR OF DISTURBANCE). FOR DISTURBED WETLAND, STEEP SLOPES AND SENSITIVE AREAS, AREA TO BE RESTORED IN ACCORDANCE WITH THE EM&CP SECTIONS 9 AND 13.
6. INACTIVE PORTIONS OF THE SITE ARE TO BE SEEDED AND MULCHED AS SPECIFIED WITHIN 14 DAYS (DURING WINTER STABILIZATION, THIS TIMEFRAME IS 3 DAYS AND MUST BEGIN WITHIN 24 HOUR OF DISTURBANCE). FOR DISTURBED WETLAND, STEEP SLOPES AND SENSITIVE AREAS, AREA TO BE RESTORED IN ACCORDANCE WITH THE EM&CP SECTIONS 9 AND 13.
7. SEDIMENT AND EROSION CONTROL MEASURES SHALL BE INSPECTED AT LEAST ONCE EVERY SEVEN (7) DAYS OR MORE FREQUENTLY IF REQUIRED. ALL MAINTENANCE REQUIRED BY INSPECTION SHALL COMMENCE WITHIN 24 HOURS AND BE COMPLETED WITHIN 48 HOURS OF REPORT.
8. THIS PLAN SHALL NOT BE CONSIDERED ALL INCLUSIVE AS THE GENERAL CONTRACTOR SHALL TAKE ALL NECESSARY PRECAUTIONS TO PREVENT SOIL SEDIMENT FROM LEAVING THE SITE.
9. GENERAL CONTRACTOR SHALL COMPLY WITH ALL STATE AND LOCAL ORDINANCES THAT APPLY.
10. ADDITIONAL EROSION AND SEDIMENT CONTROL MEASURES WILL BE INSTALLED IF DEEMED NECESSARY FOLLOWING SITE INSPECTION. THE SWPPP AND/OR ENVIRONMENTAL INSPECTOR HAS THE AUTHORITY TO REQUIRE ADDITIONAL EROSION CONTROL MEASURES IF THE INSPECTOR DEEMS NECESSARY.
11. GENERAL CONTRACTOR SHALL BE RESPONSIBLE TO TAKE REASONABLE MEANS NECESSARY TO ESTABLISH PERMANENT SOIL STABILIZATION.
12. AT THE END OF EACH WORK DAY DISTURBED SOILS ARE TO BE REGRADED TO DRAIN INTO TEMPORARY DIVERSION SWALES OR SEDIMENT CONTROL PRACTICES.
13. CONCRETE WASHOUTS DEPICTED ON PLANS ARE FOR REFERENCE ONLY. CONTRACTOR TO FIELD LOCATE WASHOUTS AS NECESSARY. FIELD LOCATED WASHOUTS SHALL BE CONSTRUCTED IN ACCORDANCE WITH THE EM&CP AND SHALL BE A MINIMUM OF 100' FROM ADJACENT WETLANDS AND 200' FROM ANY EXISTING WELLS.

SHEET INDEX	
Sheet Number	Sheet Title
G-000	COVER SHEET
G-001	GENERAL NOTES AND SHEET INDEX
G-003	LEGENDS AND ABBREVIATIONS
C-201A	FORT EDWARD LAYDOWN AREA A (SEGMENT 4, PACKAGE 3)
C-201B	FORT EDWARD LAYDOWN AREA B (SEGMENT 4, PACKAGE 3)
C-202	BETHLEHEM LAYDOWN YARD (SEGMENT 9 - PACKAGE 5B)
C-203	COXSACKIE - HUDSON RIVER LAYDOWN YARD (SEGMENT 10, PACKAGE 6)
C-601	EROSION AND SEDIMENT CONTROL DETAILS
C-602	EROSION AND SEDIMENT CONTROL DETAILS
C-632	TYPICAL CULVERT INSTALLATION AND REPLACEMENT DETAILS

1. INSTALL STABILIZED CONSTRUCTION ENTRANCE AND TEMPORARY EROSION AND SEDIMENT CONTROL MEASURES (INSTALLED IN PROGRESSIVE PHASES).
2. ESTABLISH WORK AREA AND CONTRACTOR STAGING AREAS.
3. PERFORM INITIAL CLEARING TO REMOVE VEGETATION (WHERE REQUIRED).
4. PERFORM SITE GRADING AND INSTALL GRAVEL ACCESS ROADS AND GROUND STABILIZATION IF REQUIRED DUE TO SITE CONDITIONS. GROUND STABILIZATION SHALL GENERALLY CONSIST OF UNDERCUTTING EXISTING UNSUITABLE TOPSOIL (TO BE STOCKPILED ON-SITE), PROOF ROLLING THE SUBGRADE, INSTALLING LAYERS OF GEOTEXTILE FABRIC AND GEGRID, AND INSTALLING AN AGGREGATE BASE. ADDITIONAL ESCS WILL BE INSTALLED AT THE DIRECTION OF DESIGN ENGINEERS AND ENVIRONMENTAL INSPECTORS.
5. INSTALL TEMPORARY ELECTRIC UTILITY TIE-INS FROM NEARBY LOCATIONS. DRILL WATER WELL AT COXSACKIE-HUDSON RIVER BULK YARD, AND TIE INTO PUBLIC WATER SYSTEM AT FORT EDWARD AND BETHLEHEM YARDS. WATER WELL AT COXSACKIE-HUDSON RIVER YARD WILL BE DRILLED BY A NYSDC LICENSED WELL DRILLER AND WELL INSTALLATION WILL FOLLOW NYSDC REGULATIONS FOR DRILLING NOTICE. REGISTRATION AND COMPLETION REPORTS WILL BE PROVIDED THROUGH THE WELL DRILLING CONTRACTOR. SANITARY HOLDING TANKS WILL BE UTILIZED AT EACH LAYDOWN YARD, SEE SECTION 5.3.2 FOR DETAILS PERTAINING TO PRECAUTIONARY MEASURES AND SERVICING.
6. INSTALL FENCING AND GATES, SITE LIGHTING, MODULAR TRAILER MOUNTED OFFICES, DUMPSTERS, AND CONNEX STORAGE CONTAINERS.
7. INSTALL CONCRETE PADS FOR TEMPORARY STRUCTURES SUCH AS MAINTENANCE SHOP, CABLE HEATING BUILDING, FUELING PAD, FUEL TRUCK PARKING PAD, AND EQUIPMENT WASH PAD.
8. INSTALL TEMPORARY STRUCTURES.
9. AT THE COMPLETION OF CONSTRUCTION, CONTRACTOR WILL RESTORE THE SITE TO EXISTING CONDITIONS IN ACCORDANCE WITH CHAPTER 13 OF THE EM&CP.

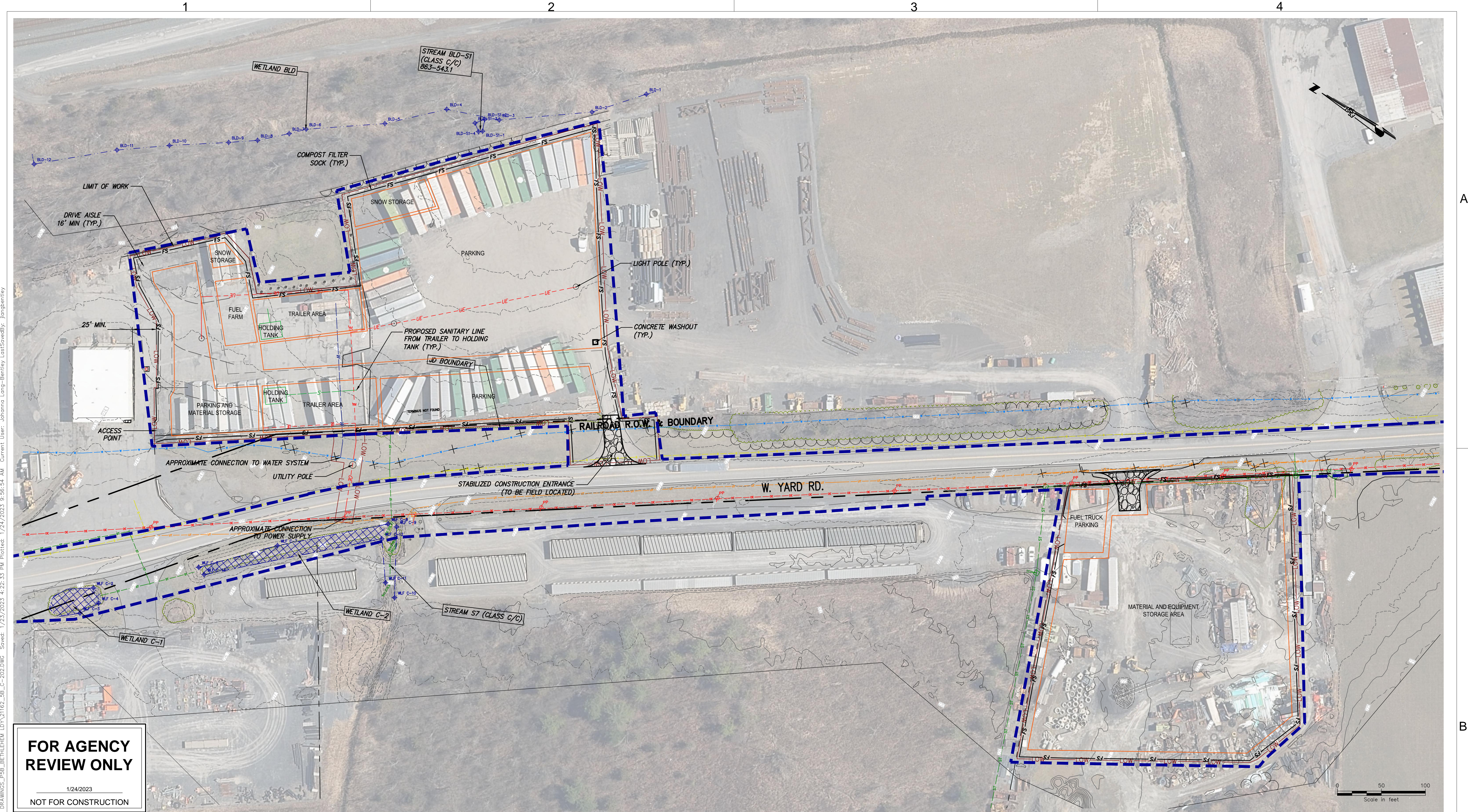


 <p>Champlain Hudson Power Express</p>				 <p>III Winners Circle, PO Box 5269 Albany, NY 12205-0269 518.453.4500 · www.chacompanies.com</p>		<p>IT IS A VIOLATION OF LAW FOR ANY PERSON, UNLESS THEY ARE ACTING UNDER THE DIRECTION OF A LICENSED PROFESSIONAL ENGINEER, ARCHITECT, LANDSCAPE ARCHITECT OR LAND SURVEYOR TO ALTER AN ITEM IN ANY WAY. IF AN ITEM BEARING THE STAMP OF A LICENSED PROFESSIONAL IS ALTERED, THE ALTERING ENGINEER, ARCHITECT, LANDSCAPE ARCHITECT OR LAND SURVEYOR SHALL STAMP THE DOCUMENT AND INCLUDE THE NOTATION "ALTERED BY" FOLLOWED BY THEIR SIGNATURE, THE DATE OF SUCH ALTERATION, AND A SPECIFIC DESCRIPTION OF THE ALTERATION.</p>						<p align="center">CHAMPLAIN HUDSON POWER EXPRESS PROJECT WIDE LAYDOWN YARD PACKAGE</p> <p align="center">GENERAL NOTES AND SHEET INDEX</p>		<p>KIEWIT PROJECT NO. 21162</p> <p>CHA PROJECT NO. 066076</p> <p>DRAWING NO. G-001</p>			
1	01/20/2023	REVISED PER DPS COMMENTS				JM	JR										
0	11/11/2022	FINAL EM&CP SUBMISSION				JM	JR										
No.	DATE	SUBMITTAL / REVISION DESCRIPTION				DB	APP	DRAWN BY:	JJE	DESIGNED BY:	JTM	APPROVED BY:	JPR	SCALE REV. NO.	AS NOTED X	DATE	11/11/2022

B

KIEWIT PROJECT NO.
21162
CHA PROJECT NO.
066076
DRAWING NO.
G-003
DATE 11/11/2022

File: T:\21075 CHPE EM&CP\CAD\WORKING DRAWINGS_P5B_BETHLEHEM_LDY\21162_5B_C-202.DWG Saved: 1/23/2023 4:22:33 PM Plotted: 1/24/2023 9:56:54 AM Current User: Johanna Long-Bentley LastSavedBy: jlongbentley



BETHLEHEM LAYDOWN YARD PLAN VIEW
SCALE: 1" = 50'



IT IS A VIOLATION OF LAW FOR ANY PERSON, UNLESS THEY ARE ACTING UNDER THE DIRECTION OF A LICENSED PROFESSIONAL ENGINEER, ARCHITECT, LANDSCAPE ARCHITECT OR LAND SURVEYOR TO ALTER AN ITEM IN ANY WAY. IF AN ITEM BEARING THE STAMP OF A LICENSED PROFESSIONAL IS ALTERED, THE ALTERING ENGINEER, ARCHITECT, LANDSCAPE ARCHITECT OR LAND SURVEYOR SHALL STAMP THE DOCUMENT AND INCLUDE THE NOTATION "ALTERED BY" FOLLOWED BY THEIR SIGNATURE, THE DATE OF SUCH ALTERATION, AND A SPECIFIC DESCRIPTION OF THE ALTERATION.

1	01/20/23	REVISED PER DPS COMMENTS	JLB	ZR	
0	11/11/22	FINAL EM&CP SUBMISSION	JLB	ZR	
No.	DATE	SUBMITTAL / REVISION DESCRIPTION	DB	APP	

CHAMPLAIN HUDSON POWER EXPRESS
PROJECT WIDE LAYDOWN YARD EM&CP
BETHLEHEM LAYDOWN YARD
(SEGMENT 9 - PACKAGE 5B)
EROSION AND SEDIMENT CONTROL PLAN

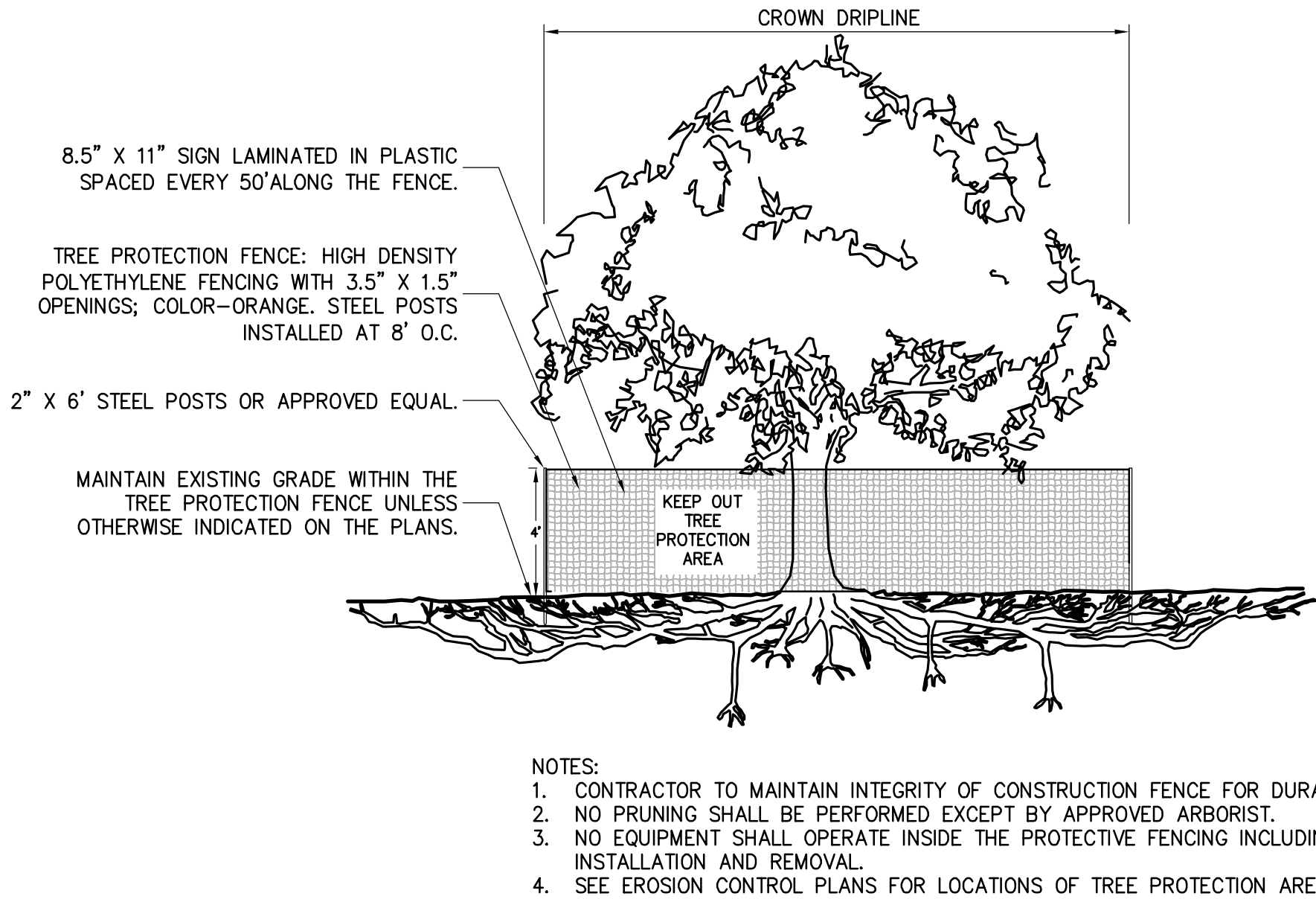
DRAWN BY:	JLB	DESIGNED BY:	JLB	APPROVED BY:	ZR	SCALE	AS SHOWN	DATE	01/23/2023
						REV. NO.		SH.NO.	OF XXX

KIEWIT PROJECT NO.	21162
EDR PROJECT NO.	21075
DRAWING NO.	C-202

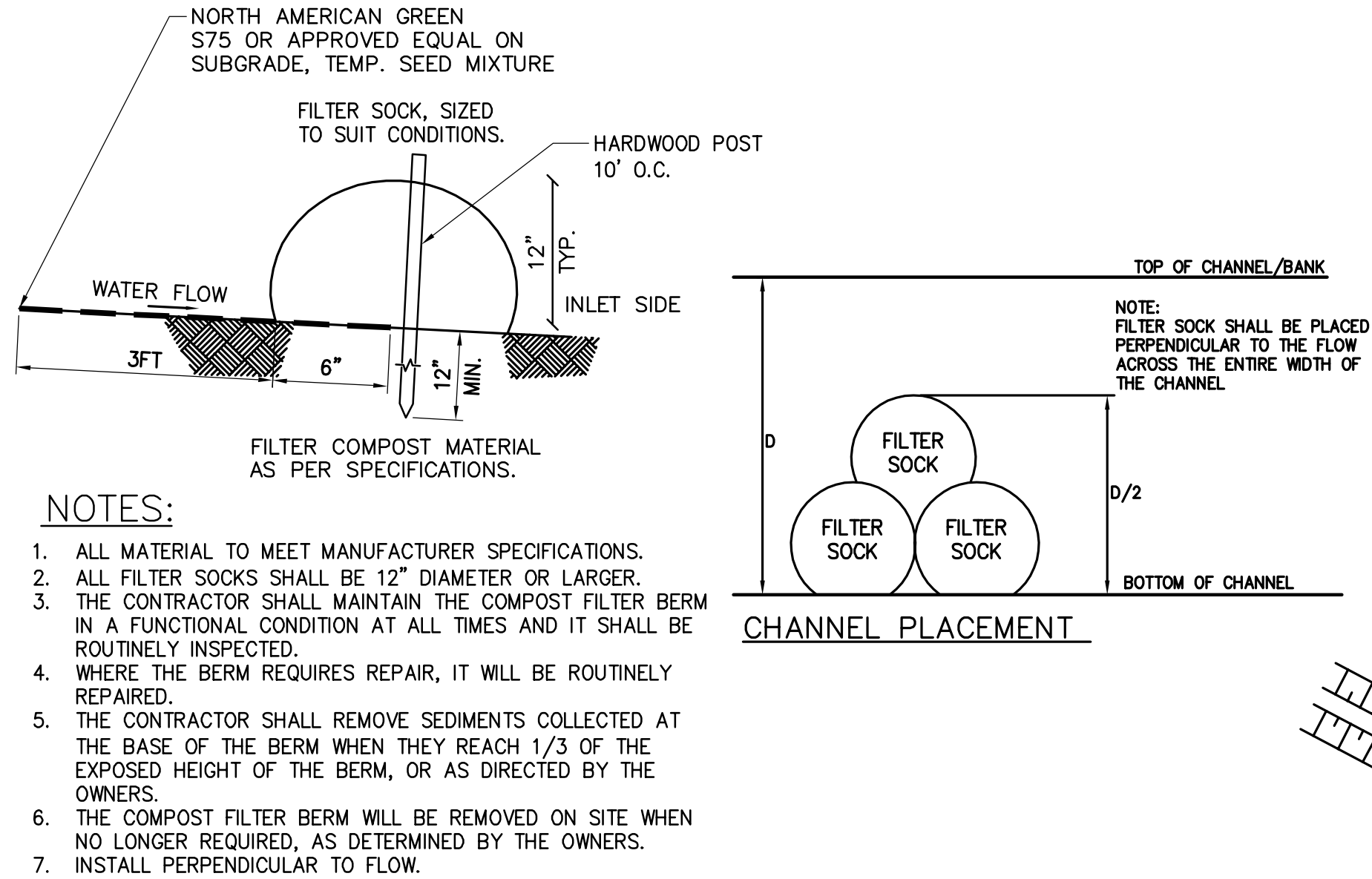


SCALE: 1" = 50'

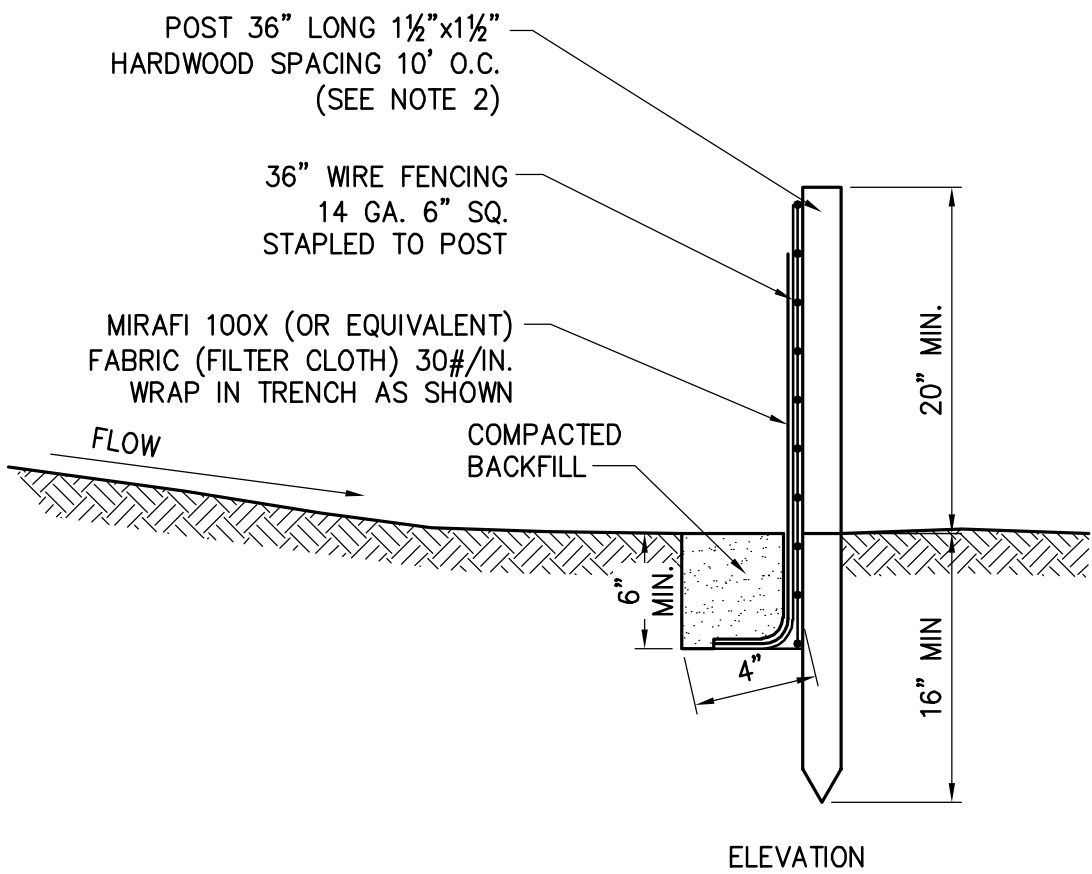
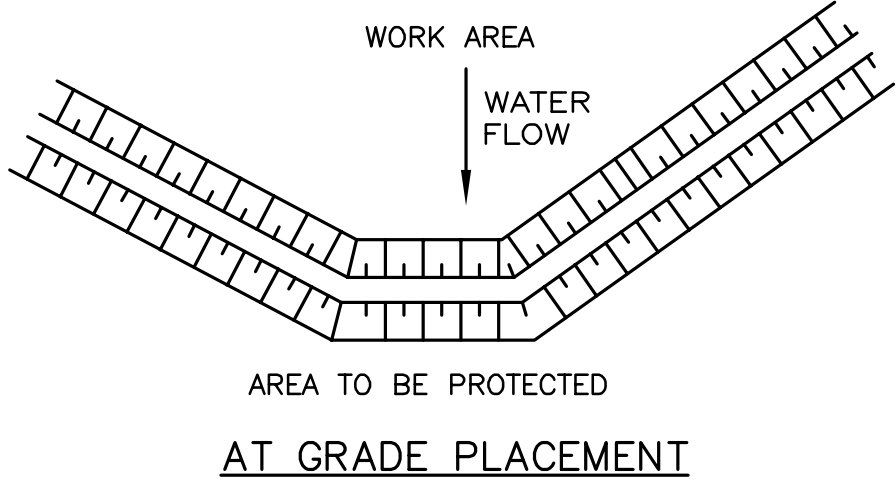




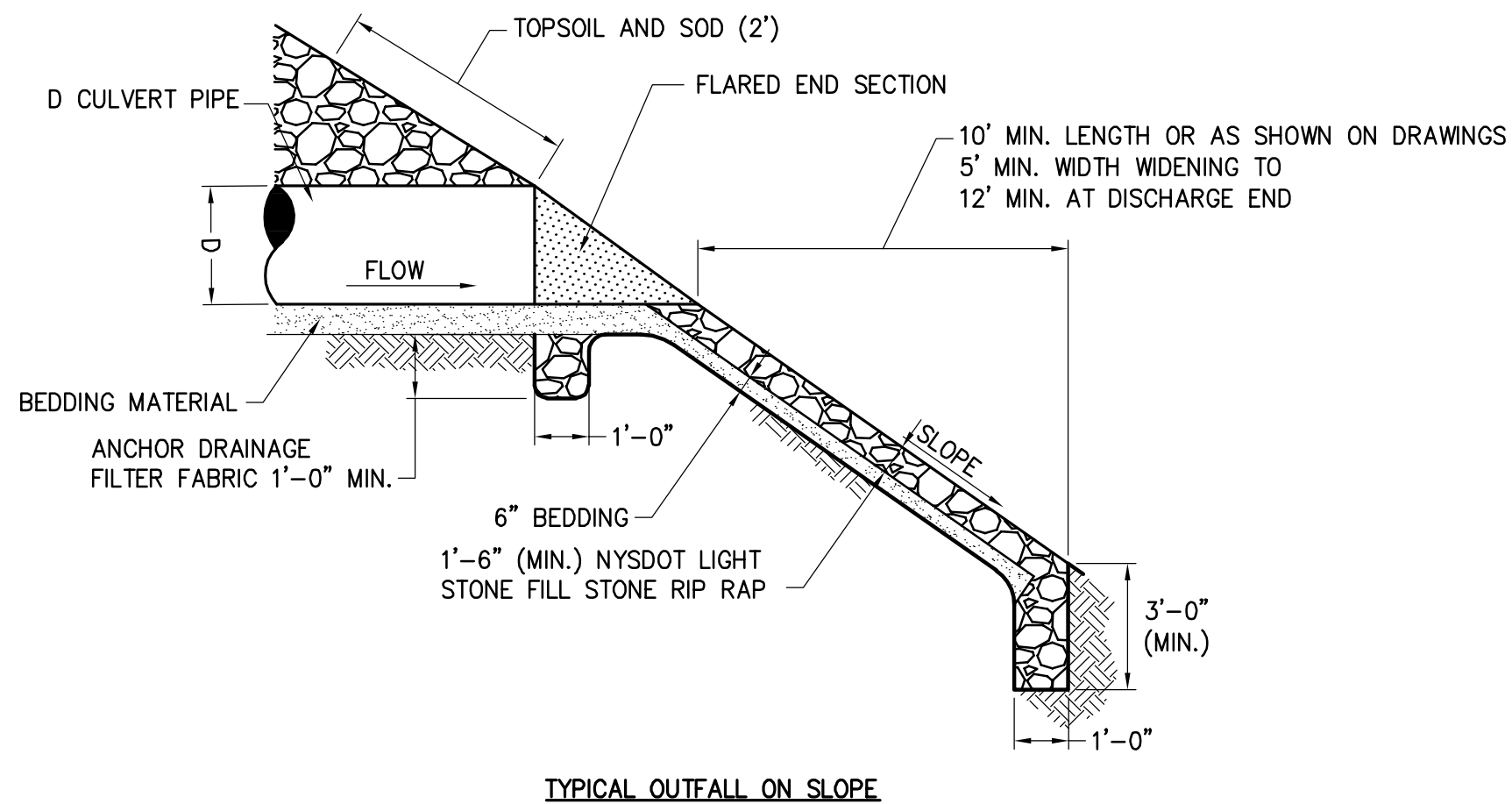
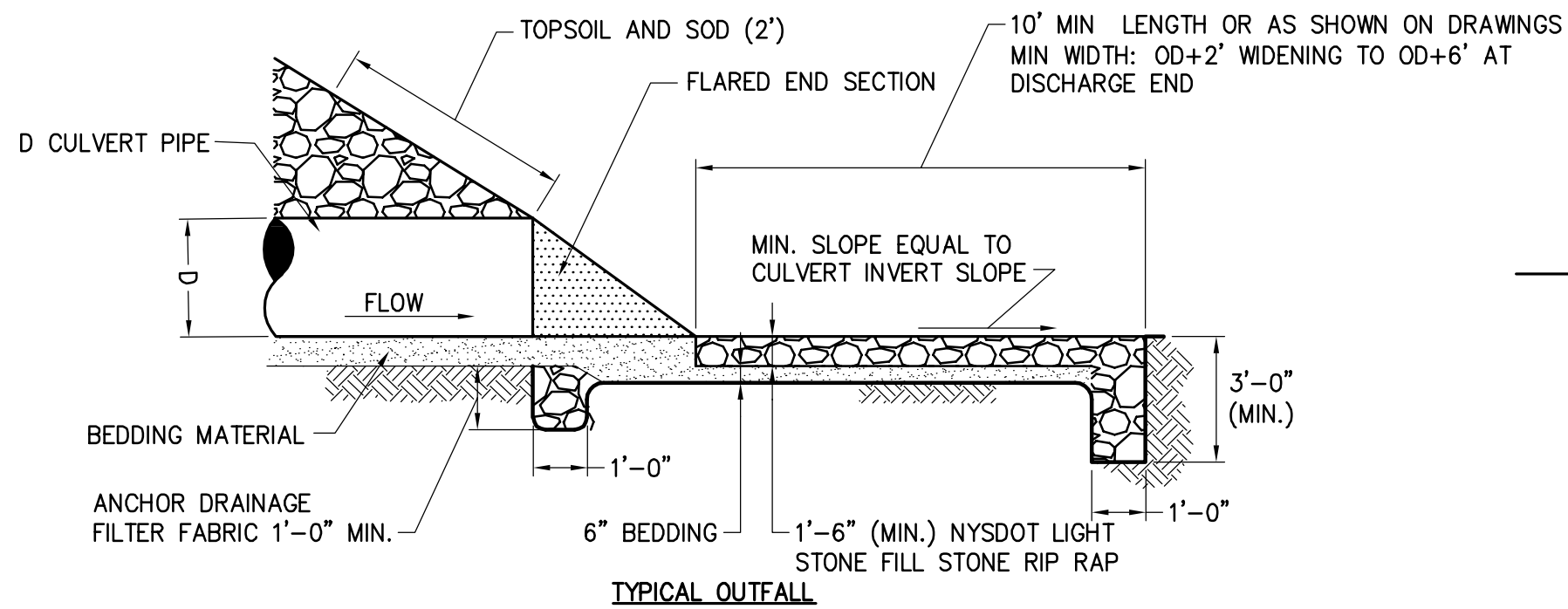
1 TREE PROTECTION
NOT TO SCALE



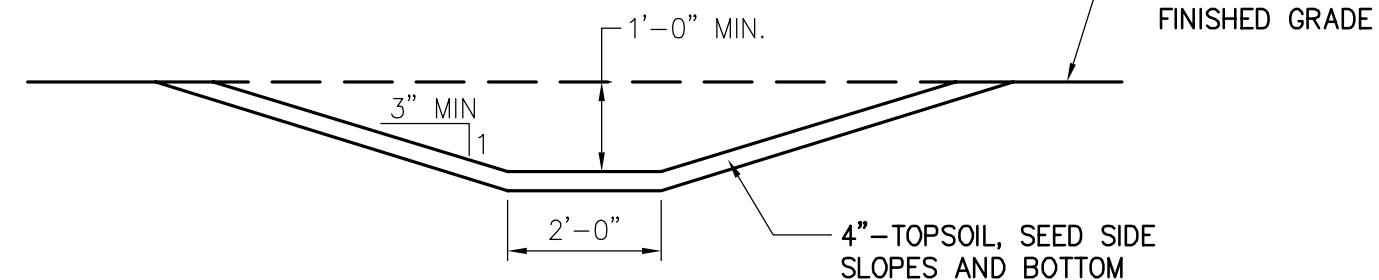
2 COMPOST FILTER SOCK DETAIL
SCALE: N.T.S.



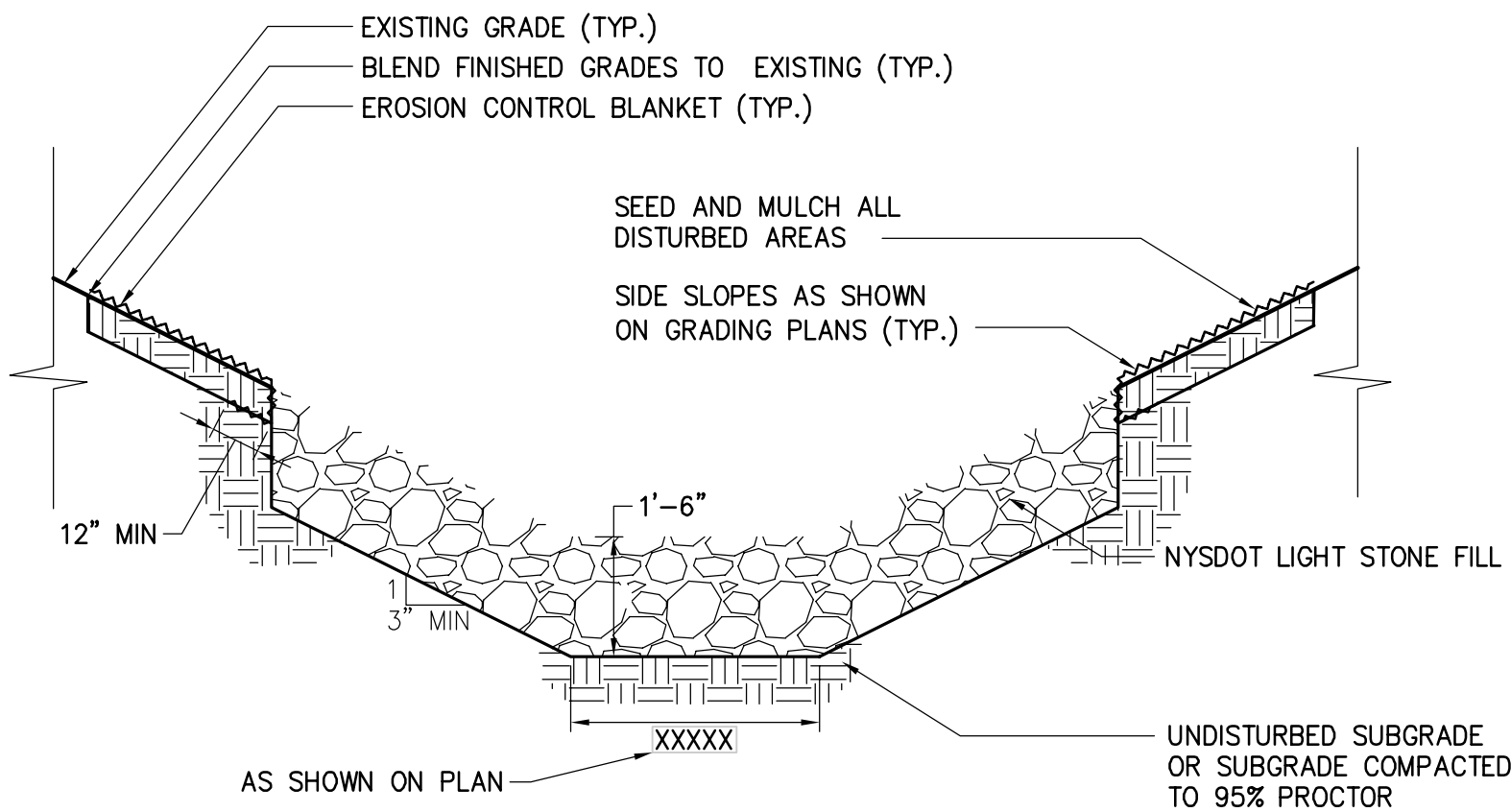
3 SILT FENCE
SCALE: N.T.S.



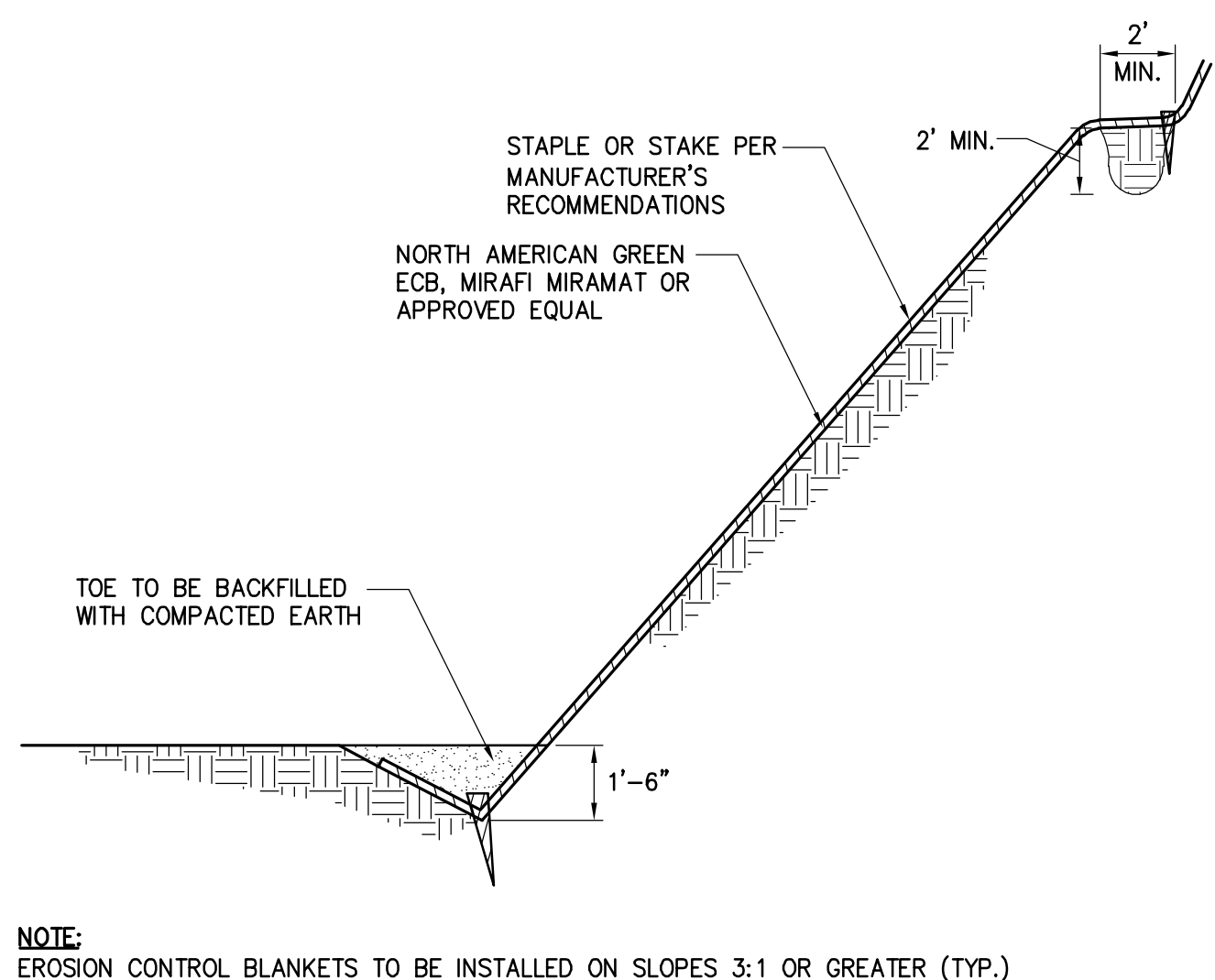
4 TYPICAL CULVERT OUTFALL RIP RAP
SCALE: N.T.S.



5 TYPICAL GRASS DRAINAGE SWALE
SCALE: N.T.S.

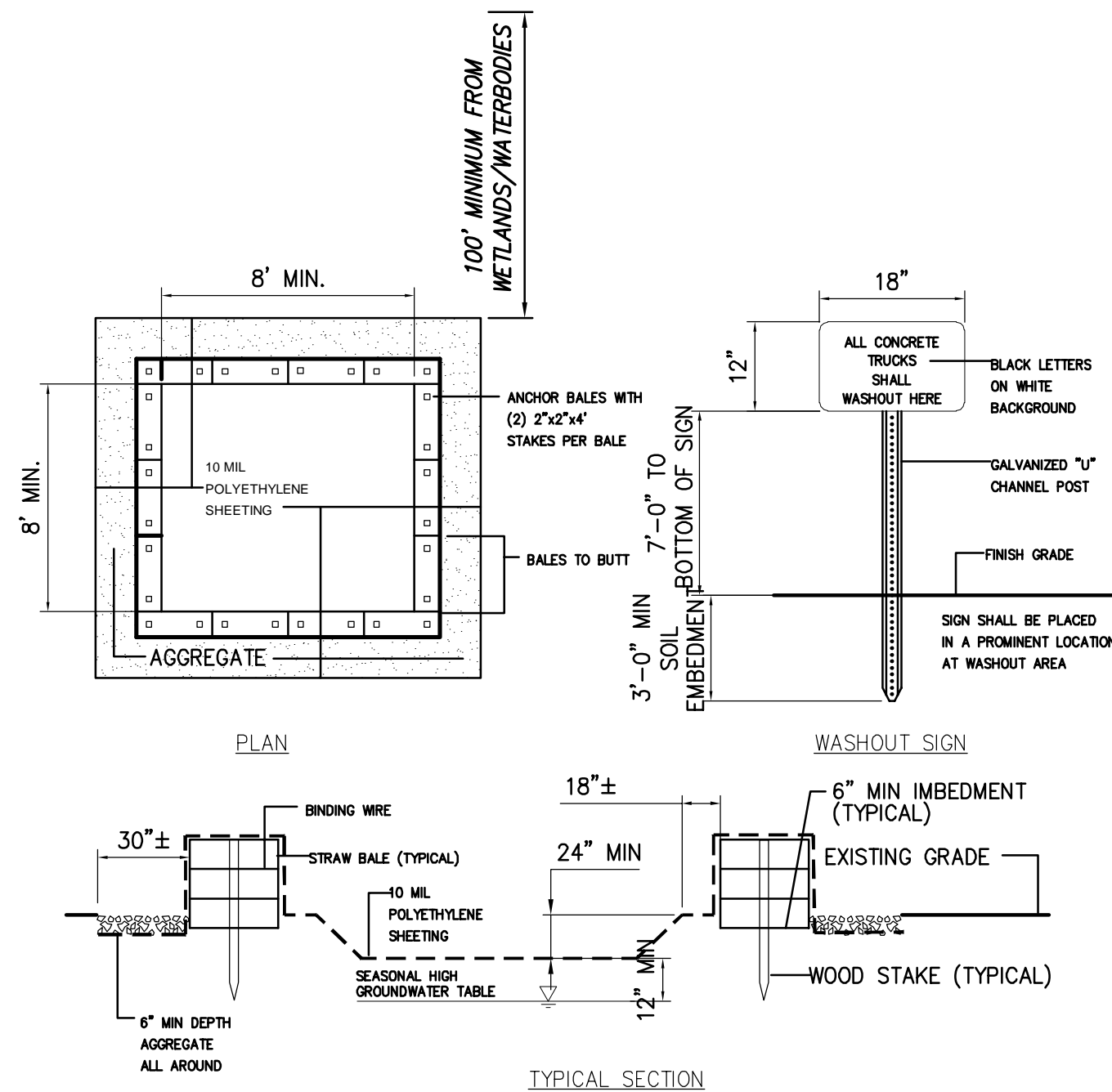


6 LIGHT STONE-LINED DRAINAGE CHANNEL
SCALE: N.T.S.



3 EROSION CONTROL BANK STABILIZATION DETAIL

SCALE: N.T.S.



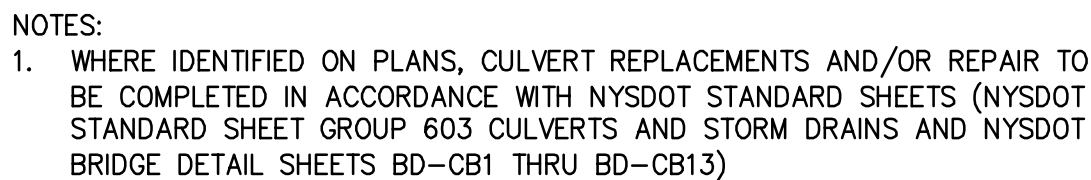
1. ALL CONCRETE WASHOUT FACILITIES SHALL BE INSPECTED DAILY. DAMAGED OR LEAKING FACILITIES SHALL BE DEACTIVATED AND REPAIRED OR REPLACED IMMEDIATELY. EXCESS RAINWATER THAT HAS ACCUMULATED OVER HARDENED CONCRETE SHALL BE PUMPED TO A STABILIZED AREA SUCH AS A GRASS FIELD STRIP.
2. ACCUMULATED HARDENED MATERIAL SHALL BE REMOVED WHEN 75% OF THE STORAGE CAPACITY OF THE STRUCTURE IS FILLED. ANY EXCESS WASH WATER SHALL BE PUMPED INTO A CONTAINMENT VESSEL AND PROPERLY DISPOSED OF OFF SITE.
3. DISPOSAL OF THE HARDENED MATERIAL SHALL BE OFF-SITE IN A CONSTRUCTION/DEMOLITION LANDFILL.
4. THE PLASTIC LINER SHALL BE REPLACED WITH EACH CLEANING OF THE WASHOUT FACILITY.
5. INSPECT THE PROJECT SITE FREQUENTLY TO ENSURE THAT NO CONCRETE DISCHARGES ARE TAKING PLACE IN NON-DESIGNATED AREAS.
6. LOCATION(S) TO BE DETERMINED IN THE FIELD BY THE OWNER'S REPRESENTATIVE
7. CONCRETE WASHOUTS SHALL NOT BE LOCATED WITHIN 200' OF ANY KNOWN WELL.

6 CONCRETE WASHOUT AREA

SCALE: N.T.S



SCALE: N.T.S



SCALE: N.T.S.

SCALE: N.T.S

