

APPENDIX B
CASE 10-T-0189
EM&CP FILING NOTICES

Notice of Submission of Temporary Laydown Yard EM&CP For the Champlain Hudson Power Express Line

Dear Stakeholder,

Please take notice that, on or about November 11, 2022, CHPE LLC and its wholly-owned subsidiary, CHPE Properties, Inc. (collectively referred to as “CHPE”) intend to submit an Environmental Management & Construction Plan (“EM&CP”) for Temporary Laydown Yards in the proposed Champlain Hudson Power Express (“CHPE”) Project. The Temporary Laydown Yard EM&CP consists of three temporary laydown yards on previously disturbed lands in the Towns of Fort Edward (Washington County), Bethlehem (Albany County) and Athens (Greene County), which will be used for construction staging, marshalling, and storage during construction.

The New York State Public Service Commission (“PSC”) issued a Certificate of Environmental Compatibility and Public Need (“Certificate”) to CHPE on April 18, 2013 to construct and operate the Project. Pursuant to that Certificate, CHPE is required to circulate notices to certain landowners, utility owners, municipalities and agencies near the proposed Temporary Laydown Yard location indicating that the EM&CP will soon be filed and providing links and contact information which stakeholders can use to obtain further information or to submit comments.

The EM&CP provides detailed information regarding how these three Project Temporary Laydown Yards will be constructed. The document describes and depicts the specific location of the laydown yards and temporary work areas, as well as descriptions of work to be performed, plan and profile drawings depicting the Project, and protocols to be used during construction to protect the community and the environment, and to comply with the CHPE Certificate. The EM&CP must be reviewed and approved by the PSC before construction on this Segment can begin.

An overview map of the proposed route accompanies this notice. Further details of the planned work locations will be made available on the Project website at: <https://chpexpress.com/overview-of-public-documents/environmental-management-construction-plan/>. In general, construction activities for this Segment are anticipated to commence in the winter of 2022-23. Construction will generally occur between 7 a.m. and 7 p.m., with any high-noise construction activities occurring during daylight hours as much as possible, though some activities which require continuous operations could extend to later hours.

Contact Information and Document Repositories

CHPE has established a toll-free number for questions regarding the Project: 1-800-991-CHPE (2473). Questions or requests for further information can be directed to publicoutreach@chpexpress.com or by mail to Molly Hollister, WSP USA, One Pennsylvania Plaza, New York, New York 10119.



c/o Transmission Developers
600 Broadway
Albany, NY 12207

The full Commission docket for the Project can be accessed via the Commission's website at: <http://documents.dps.ny.gov/public/MatterManagement/CaseMaster.aspx?MatterCaseNo=10-T-0139> and electronic copies of EM&CP documents also will be available on the Project website at <https://chpexpress.com/overview-of-public-documents/environmental-management-construction-plan/>. Paper copies of the EM&CP submission will be available for viewing at the following local document repositories: Fort Edward Free Library, 23 East St, Fort Edward, NY 12828; Bethlehem Public Library, 451 Delaware Ave, Delmar, NY 12054; and D.R. Evarts Library, 80 Second Street, Athens, NY 12015.

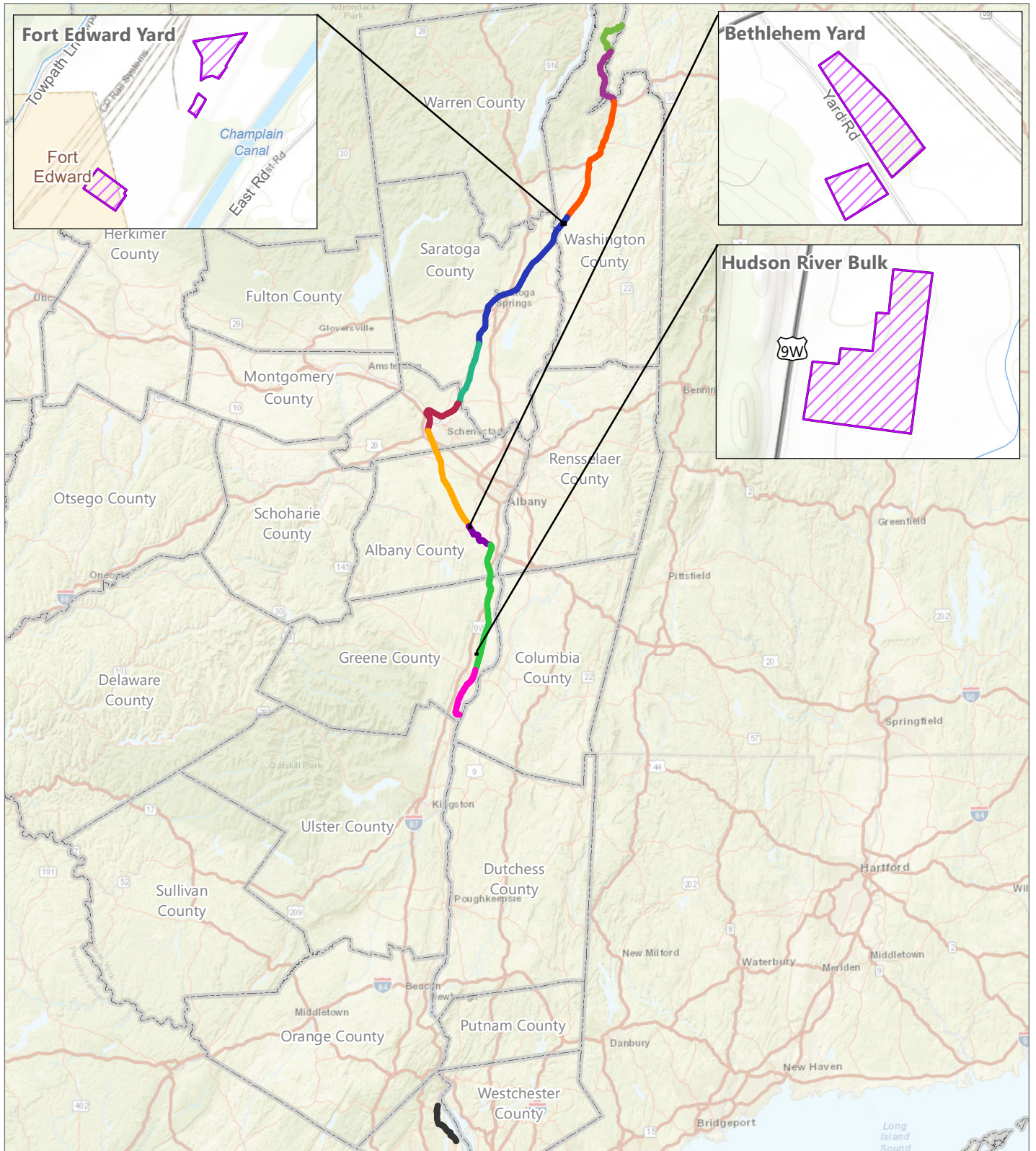
Filing Comments

Any person wishing to be heard by the Commission on any matter related to the proposed Temporary Laydown Yard EM&CP may file written comments with the Commission Secretary by email at secretary@dps.ny.gov or by mail to Michelle Phillips, Secretary, NYS Public Service Commission, 3 Empire State Plaza, Albany, NY, 12223, within 30 days of the EM&CP segment's filing with the Commission. All comments should reference Case Number 10-T-0139.

Yours truly,

Josh Bagnato
Vice President, Development

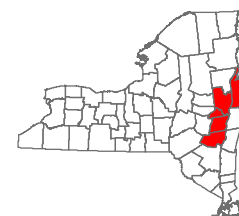
Figure 1. CHPE EM&CP Laydown Yards



CHPE EM&CP

Washington, Saratoga, Schenectady,
Albany, Greene and Rockland Counties,
New York

- CHPE EM&CP Filing Package
- Segment 1
 - Segment 2
 - Segment 3
 - Segment 4 & 5
 - Segment 6
 - Segment 7
 - Segment 8
 - Segment 9
 - Segment 10
 - Segment 11
 - Segment 12
 - Laydown Yard



0 2.5 5 10
Miles

Prepared November 9, 2022
Basemap: Esri StreetMap North America, 2008

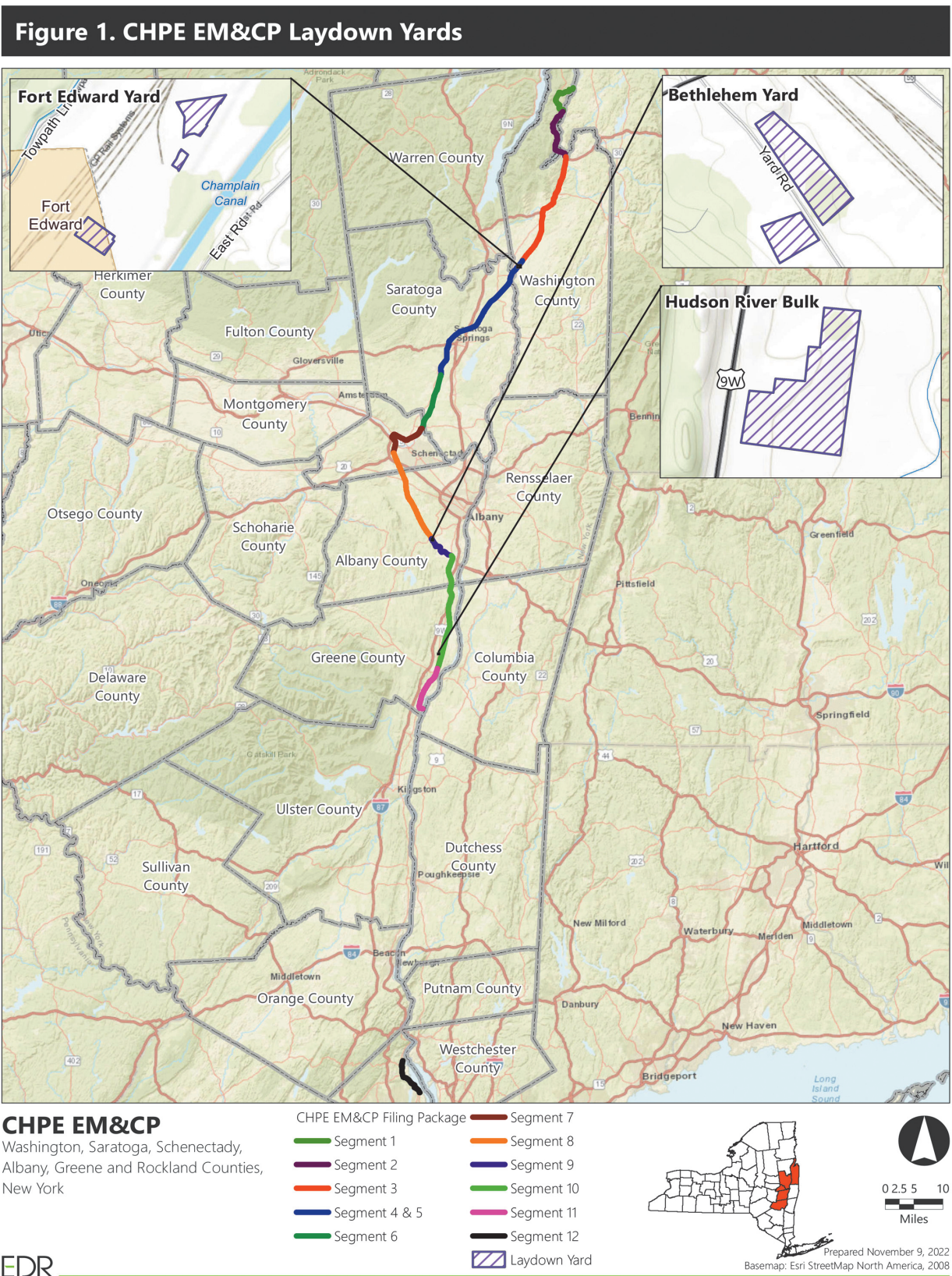
NOTICE OF SUBMISSION OF ENVIRONMENTAL MANAGEMENT AND CONSTRUCTION PLAN FOR CHAMPLAIN HUDSON POWER EXPRESS

Please take notice that, on or about November 11, 2022, CHPE LLC and CHPE Properties, Inc. (collectively referred to as “CHPE”) intend to submit an Environmental Management & Construction Plan (“EM&CP”) for Temporary Laydown Yards in the proposed Champlain Hudson Power Express (“CHPE”) Project. The Temporary Laydown Yard EM&CP consists of three temporary laydown yards on previously disturbed lands in the Towns of Fort Edward (Washington County), Bethlehem (Albany County) and Athens (Greene County), which will be used for construction staging, marshalling, and storage during construction.

On April 18, 2013, the NYS Public Service Commission (Commission) issued to CHPE a certificate of environmental compatibility and public need (Certificate), pursuant to Article VII of the Public Service Law (PSL), to construct and operate the CHPE Project. The Certificate requires that, prior to construction of any portion of the Project, CHPE submit an EM&CP for review and comment.

Details of the planned work locations, including an overview map of the proposed route, is available on the Project website at: <https://chpexpress.com/overview-of-public-documents/environmental-management-construction-plan/>. In general, construction activities for this Segment are anticipated to commence in the winter of 2022-23. Construction will generally occur between 7 a.m. and 7 p.m., with any high-noise construction activities occurring during daylight hours as much as possible, though some activities which require continuous operations could extend to later hours.

The EM&CP provides detailed information regarding how the Temporary Laydown Yards will be constructed. The document describes and depicts the specific location of these yards including the Construction Zone and temporary work areas, as well as descriptions of work to be performed, plan and profile drawings, and protocols to be used during construction to protect the community and the environment, and to comply with the CHPE Certificate. The EM&CP must be reviewed and approved by the PSC before construction of these Temporary Laydown Yards can begin. The full Commission docket for the Project can be accessed via the Commission’s website at: <http://documents.dps.ny.gov/public/MatterManagement/CaseMaster.aspx?MatterCaseNo=10-T-0139> and electronic copies of EM&CP documents also will be available on the Project website at <https://chpexpress.com/overview-of-public-documents/environmental-management-construction-plan/>. Paper copies of the EM&CP submission will be available for viewing at the



following local document repositories: Fort Edward Free Library, 23 East St, Fort Edward, NY 12828; Bethlehem Public Library, 451 Delaware Ave, Delmar, NY 12054; and D.R. Evarts Library, 80 Second Street, Athens, NY 12015. Comments related to the proposed Temporary Laydown Yard EM&CP should be submitted to the Commission Secretary by email at secretary@dps.ny.gov or by mail to Michelle Phillips, Secretary, NYS Public Service Commission, 3 Empire State Plaza, Albany, NY, 12223, within 30 days of the EM&CP segment’s filing with the Commission. All comments should reference Case Number 10-T-0139.

CHPE has established a toll-free number for questions regarding the Project: 1-800-991-CHPE (2473). Questions or requests for further information can be directed to: publicoutreach@chpexpress.com or by mail to Molly Hollister, WSP USA, One Pennsylvania Plaza, New York, New York 10119.





c/o Transmission Developers
600 Broadway
Albany, NY 12207

Notice of Submission of Temporary Laydown Yard EM&CP For the Champlain Hudson Power Express Line

Dear Stakeholder/Record Interest Holder,

Please take notice that, on or about November 11, 2022, CHPE LLC and its wholly-owned subsidiary, CHPE Properties, Inc. (collectively referred to as "CHPE") intend to submit an Environmental Management & Construction Plan ("EM&CP") for Temporary Laydown Yards in the proposed Champlain Hudson Power Express ("CHPE") Project. The Temporary Laydown Yard EM&CP consists of three temporary laydown yards on previously disturbed lands in the Towns of Fort Edward (Washington County), Bethlehem (Albany County) and Athens (Greene County), which will be used for construction staging, marshalling, and storage during construction.

The New York State Public Service Commission ("PSC") issued a Certificate of Environmental Compatibility and Public Need ("Certificate") to CHPE on April 18, 2013 to construct and operate the Project. Pursuant to that Certificate, CHPE is required to circulate notices to certain landowners, utility owners, municipalities and agencies near the proposed Temporary Laydown Yard location indicating that the EM&CP will soon be filed and providing links and contact information which stakeholders can use to obtain further information or to submit comments.

The EM&CP provides detailed information regarding how these three Project Temporary Laydown Yards will be constructed. The document describes and depicts the specific location of the laydown yards and temporary work areas, as well as descriptions of work to be performed, plan and profile drawings depicting the Project, and protocols to be used during construction to protect the community and the environment, and to comply with the CHPE Certificate. The EM&CP must be reviewed and approved by the PSC before construction on this Segment can begin.

An overview map of the proposed route accompanies this notice. Further details of the planned work locations will be made available on the Project website at: <https://chpexpress.com/overview-of-public-documents/environmental-management-construction-plan/>. In general, construction activities for this Segment are anticipated to commence in the winter of 2022-23. Construction will generally occur between 7 a.m. and 7 p.m., with any high-noise construction activities occurring during daylight hours as much as possible, though some activities which require continuous operations could extend to later hours.

Interest to be Acquired

You have been identified as the holder of a record interest in property being utilized by CHPE for these Temporary Laydown Yards. This may mean that you own or hold an easement, lien, mortgage, or other recorded interest in land to be used on a temporary or permanent basis by CHPE for the construction or operation of the Facility. This notice is intended to provide notice to you that CHPE is acquiring an interest in lands at these Temporary Laydown Yards, in



c/o Transmission Developers
600 Broadway
Albany, NY 12207

accordance with CHPE's Certificate. As noted above, the Temporary Laydown Yards are depicted on the accompanying map.

Contact Information and Document Repositories

CHPE has established a toll-free number for questions regarding the Project: 1-800-991-CHPE (2473). Questions or requests for further information can be directed to publicoutreach@chpexpress.com or by mail to Molly Hollister, WSP USA, One Pennsylvania Plaza, New York, New York 10119.

The full Commission docket for the Project can be accessed via the Commission's website at: <http://documents.dps.ny.gov/public/MatterManagement/CaseMaster.aspx?MatterCaseNo=10-T-0139> and electronic copies of EM&CP documents also will be available on the Project website at <https://chpexpress.com/overview-of-public-documents/environmental-management-construction-plan/>. Paper copies of the EM&CP submission will be available for viewing at the following local document repositories: Fort Edward Free Library, 23 East St, Fort Edward, NY 12828; Bethlehem Public Library, 451 Delaware Ave, Delmar, NY 12054; and Heermance Memorial Library, 1 Ely Street, Coxsackie, NY 12051.

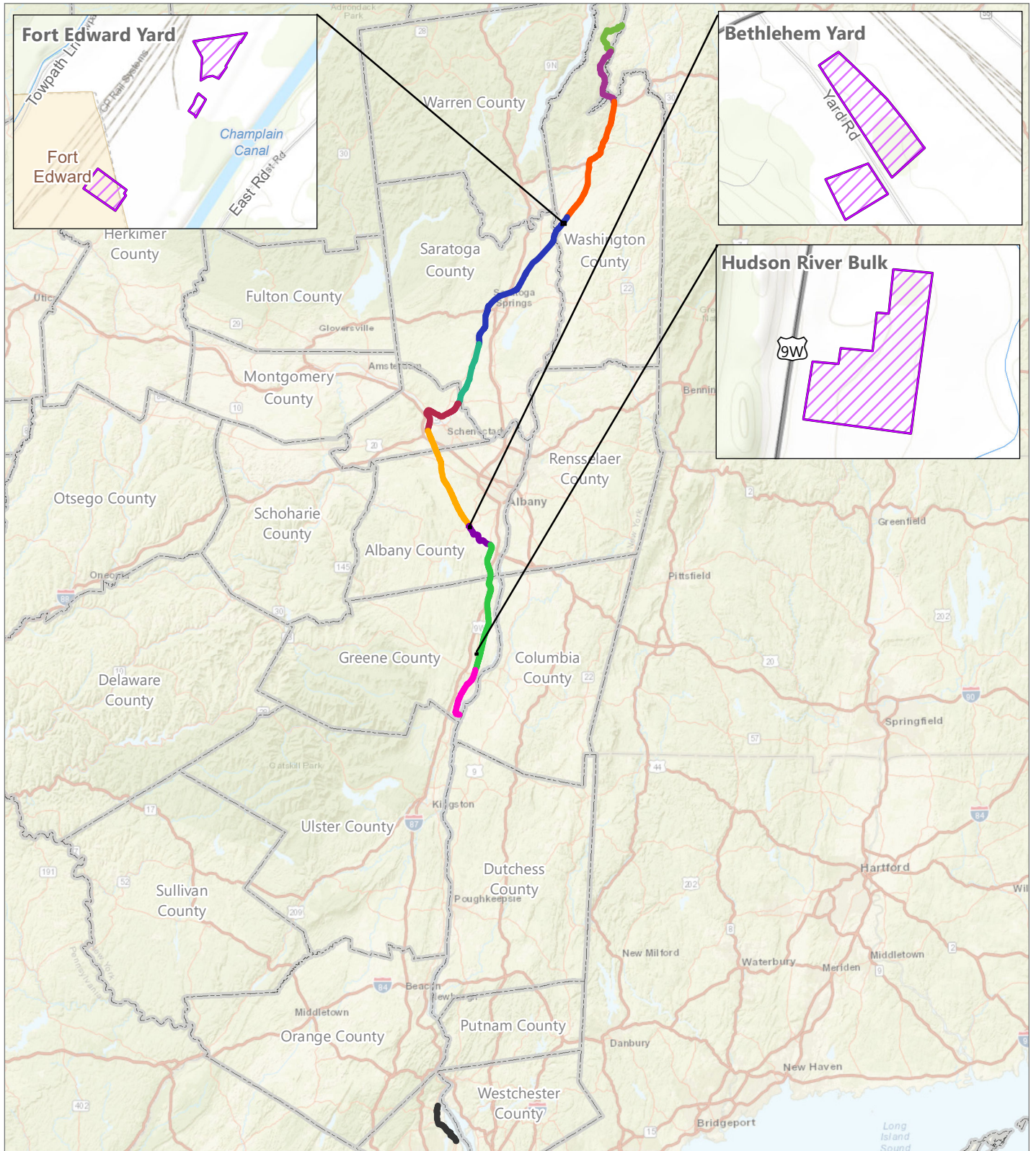
Filing Comments

Any person wishing to be heard by the Commission on any matter related to the proposed Temporary Laydown Yard EM&CP may file written comments with the Commission Secretary by email at secretary@dps.ny.gov or by mail to Michelle Phillips, Secretary, NYS Public Service Commission, 3 Empire State Plaza, Albany, NY, 12223, within 30 days of the EM&CP segment's filing with the Commission. All comments should reference Case Number 10-T-0139.

Yours truly,

Josh Bagnato
Vice President, Development

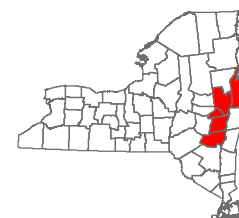
Figure 1. CHPE EM&CP Laydown Yards



CHPE EM&CP

Washington, Saratoga, Schenectady,
Albany, Greene and Rockland Counties,
New York

- CHPE EM&CP Filing Package
- Segment 1
 - Segment 2
 - Segment 3
 - Segment 4 & 5
 - Segment 6
 - Segment 7
 - Segment 8
 - Segment 9
 - Segment 10
 - Segment 11
 - Segment 12
 - Laydown Yard



0 2.5 5 10
Miles

Prepared November 9, 2022
Basemap: Esri StreetMap North America, 2008