

Appendix B. Environmental Management and Construction Plan Filing Notices

Young / Sommer LLC

ATTORNEYS AT LAW

EXECUTIVE WOODS, FIVE PALISADES DRIVE, ALBANY, NY 12205

Phone: 518-438-9907 • Fax: 518-438-9914

www.youngsommer.com

Writer's Telephone: 249

ldarling@youngsommer.com

November 23, 2022

Via Electronic Filing

Hon. Michelle Phillips, Secretary
NYS Public Service Commission
Three Empire State Plaza
Albany, NY 12223-1350

Re: Case 10-T-0139: Application of Champlain Hudson Power Express, Inc. for a Certificate of Environmental Compatibility and Public Need Pursuant to Article VII of the PSL for the Construction, Operation and Maintenance of a High Voltage Direct Current Circuit from the Canadian Border to New York City

Dear Secretary Phillips:

Enclosed please find proofs of service and publication for the Stony Point Transitional HDD Environmental Management and Construction Plan ("EM&CP") for the electric transmission project known as the Champlain Hudson Power Express Project (the "Project"). This EM&CP, and related written notices, were submitted by Champlain Hudson Power Express, Inc. and CHPE Properties, Inc. (together "CHPE" or the "Certificate Holders") on September 29, 2022 in accordance with the requirements of CHPE's April 18, 2013 Certificate of Environmental Compatibility and Public Need ("Certificate"), issued pursuant to Article VII of the Public Service Law ("PSL") by the New York State Public Service Commission (the "Commission").

The enclosed proofs of service fall into two categories: proofs of service and publication for written Notices required under the Certificate, and proofs of service for the EM&CP documents. Specifically:

- **Attachment A** contains Affidavits of Publication showing that the "Notice of Submission of Environmental Management and Construction Plan for Champlain Hudson Power Express" was published in accordance with Certificate Conditions 152 and 155 in a daily newspaper of general circulation in the Town of Stony Point (where this Segment is located), the *Journal News* on September 27, 2022 and the *Rockland County Times*, on September 29, 2022.
- **Attachment B** contains proof that written Notices were mailed to "residents, businesses, and building, structure, and facility owners and, to the extent known, operators of the same when such land uses are located within one hundred (100) feet of the HDD staging areas, off-ROW construction access roads, and the overland

components of the Facility” (if any) as required by Certificate Condition 153, as well as to the holders of recorded interests in property to be acquired or significantly disturbed by construction, as required by Certificate Conditions 143 and 155(a)(3). This proof also shows that the notice was provided to the relevant railroads enumerated in Certificate Condition 152.

- **Attachment C** contains proof that paper and/or USB copies of the EM&CP documents were served on the DPS and other agencies and entities enumerated in Certificate Condition 151, including local document repositories in the Segment area (consisting of the Town Hall and local libraries, as outlined on the attached Service List) for public inspection.
- **Attachment D** contains proof that electronic copies of the EM&CP were served on parties to this proceeding via electronic submission, consistent with the requirements of Certificate Condition 151. These documents were also filed with the Secretary for posting to DMM.
- **Attachment E** contains proof that the Written Notice and all EM&CP documents were posted to the Project Website at <https://chpexpress.com/overview-of-public-documents/environmental-management-construction-plan/>, as outlined in the Notices and required by Certificate Condition 151.

Please feel free to reach out to my office with any questions regarding this filing.

Sincerely,

/s/ **Laura Bomyea Darling**
Laura Bomyea Darling, Esq.
Young/Sommer LLC
Attorneys for CHPE

Attachment A

AFFIDAVIT OF PUBLICATION

Journal News

media group

A GANNETT COMPANY | **lohud.com**

State of Wisconsin
County of Brown, ss.:

On the 27th day of September in the year 2022, before me, the undersigned, a Notary Public in and for said State, personally appeared JOE HEYNEN, personally known to me or proved to me on the basis of satisfactory evidence to be the individual(s) whose name(s) is (are) subscribed to the within instrument and acknowledged to me that he/she/they executed the same in his/her/their capacity(ies), and that by his/her/their signature(s) on the instrument, the individual(s), or the person upon behalf of which the individual(s) acted, executed, the instrument.

JOE HEYNEN being duly sworn says that he/she is the principal clerk of THE JOURNAL NEWS, a newspaper published in the County of Westchester and the State of New York, and the notice of which the annexed is a printed copy, was published in the newspaper area(s) on the date (s) below:

Zone:

Run Dates:

ROCKLAND

9/27/2022

Joe Heynen

Signature

Sworn to before me, this 27th day of September, 2022

Nancy Heyrman
Notary Public, State of Wisconsin, County of Brown

5.15.23

My commission expires

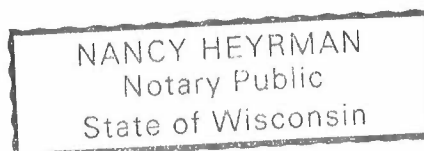
WESTCHESTER:

Amawalk, Ardsley, Ardsley on Hudson, Armonk, Baldwin Place, Bedford, Bedford Hills, Brewster, Briarcliff Manor, Bronxville, Buchanan, Carmel, Chappaqua, Cold Spring, Crompond, Cross River, Croton Falls, Croton on Hudson, Dobbs Ferry, Eastchester, Elmsford, Garrison, Goldens Bridge, Granite Springs, Greenburg, Harrison, Hartsdale, Hastings, Hastings on Hudson, Hawthorne, Irvington, Jefferson Valley, Katonah, Lake Peekskill, Larchmont, Lincolnville, Mahopac, Mahopac Falls, Mamaroneck, Millwood, Mohegan Lake, Montrose, Mount Kisco, Mount Vernon, New Rochelle, North Salem, Ossining, Patterson, Peekskill, Pelham, Pleasantville, Port Chester, Pound Ridge, Purchase, Purdys, Putnam Valley, Rye, Scarsdale, Shenorock, Shrub Oak, Somers, South Salem, Tarrytown, Thornwood, Tuckahoe, Valhalla, Verplanck, Waccabuc, White Plains, Yorktown Heights, Yonkers

ROCKLAND:

Blauvelt, Congers, Gammerville, Haverstraw, Hillburn, Monsey, Nanuet, New City, Nyack, Orangeburg, Palisades, Pearl River, Piermont, Pomona, Sloatsburg, Sparkill, Spring Valley, Stony Point, Suffern, Tallman, Tappan, Thiells, Tomkins Cove, Valley Cottage, West Haverstraw, West Nyack

Ad Number: GCI0949805



NOTICE OF SUBMISSION OF ENVIRONMENTAL MANAGEMENT AND CONSTRUCTION PLAN FOR CHAMPLAIN HUDSON POWER EXPRESS

On or about September 23, 2022, CHPE LLC and its wholly-owned subsidiary, CHPE Properties, Inc. (collectively referred to as "CHPE") intend to submit an Environmental Management & Construction Plan ("EM&CP") for the Stony Point Transitional Horizontal Directional Drill ("HDD") portion of the proposed Champlain Hudson Power Express ("CHPE") Project. The Stony Point Transitional HDD consists of a transitional horizontal directional drill in the Town of Stony Point, Rockland County, which will connect an overland segment of the CHPE line (Stony Point to Haverstraw Overland Segment 12) with the Lower Hudson River Marine Segment (Segment 20), and the installation of conduits in this location. This EM&CP also includes a temporary laydown yard at Tomkins Cove, also in the Town of Stony Point.

On April 18, 2013, the NYS Public Service Commission (Commission) issued to CHPE a certificate of environmental compatibility and public need (Certificate), pursuant to Article VII of the Public Service Law (PSL), to construct and operate the CHPE Project. The Certificate requires that, prior to construction of any portion of the Project, CHPE submit an EM&CP for review and comment.

Details of the planned work locations, including an overview map of the proposed route, is available on the Project website at: <https://chpexpress.com/overview-of-public-documents/environmental-management-construction-plan/>. In general, construction activities for this Segment are anticipated to commence in the winter of 2023. Where possible, construction will generally occur during daylight hours, though some HDD activities which require continuous operations would extend to later hours.

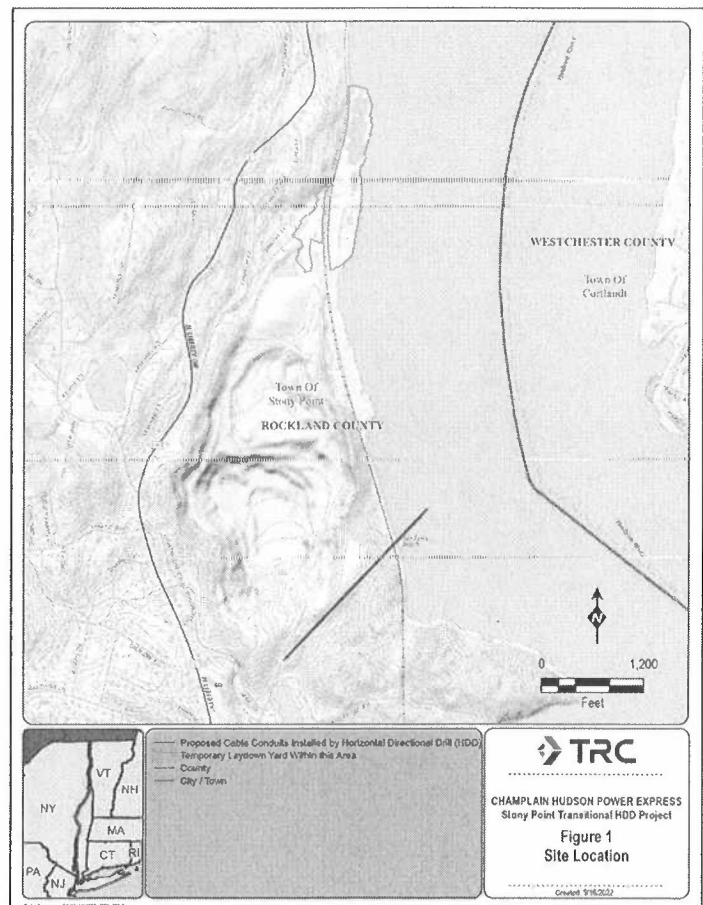
The EM&CP provides detailed information regarding how the Stony Point Transitional HDD will be constructed. The document describes and depicts the specific location of the Stony Point Transitional HDD, Construction Zone, and temporary work areas, as well as descriptions of work to be performed, plan and profile drawings depicting the Project, and protocols to be used during construction to protect the community and the environment, and to comply with the CHPE Certificate. The EM&CP must be reviewed and approved by the PSC before construction on this Segment can begin.

The full Commission docket for the Project can be accessed via the Commission's website at: <http://documents.dps.ny.gov/public/MatterManagement/CaseMaster.aspx?MatterCaseNo=10-T-0139> and electronic copies of EM&CP documents also will be available on the Project website at <https://chpexpress.com/overview-of-public-documents/environmental-management-construction-plan/>. Paper copies of the EM&CP submission will be available for viewing at the

following local document repositories: Rose Memorial Library Association, 79 East Main St., Stony Point, NY 10980; Tomkins Cove Public Library, 419 Liberty Drive North, Tomkins Cove, NY 10986.

Comments related to the proposed Stony Point Transitional HDD EM&CP should be submitted to the Commission Secretary by email at secretary@dps.ny.gov or by mail to Michelle Phillips, Secretary, NYS Public Service Commission, 3 Empire State Plaza, Albany, NY, 12223, within 30 days of the EM&CP segment's filing with the Commission. All comments should reference Case Number 10-T-0139.

CHPE has established a toll-free number for questions regarding the Project: 1-800-991-CHPE (2473). Questions or requests for further information can be directed to: publicoutreach@chpexpress.com or by mail to Molly Hollister, WSP USA, One Pennsylvania Plaza, New York, New York 10119.



CHPE
Champlain Hudson
Power Express

Public Notices

public notices/legals email: legals@lohud.com
or call: 888.300.7653

NOTICE OF SUBMISSION OF ENVIRONMENTAL MANAGEMENT AND CONSTRUCTION PLAN FOR CHAMPLAIN HUDSON POWER EXPRESS

On or about September 23, 2022, CHPE LLC and its wholly-owned subsidiary, CHPE Properties, Inc. (collectively referred to as “CHPE”) intend to submit an Environmental Management & Construction Plan (“EM&CP”) for the Stony Point Transitional Horizontal Directional Drill (“HDD”) portion of the proposed Champlain Hudson Power Express (“CHPE”) Project. The Stony Point Transitional HDD consists of a transitional horizontal directional drill in the Town of Stony Point, Rockland County, which will connect an overland segment of the CHPE line (Stony Point to Haverstraw Overland Segment 12) with the Lower Hudson River Marine Segment (Segment 20), and the installation of conduits in this location. This EM&CP also includes a temporary laydown yard at Tomkins Cove, also in the Town of Stony Point.

On April 18, 2013, the NYS Public Service Commission (Commission) issued to CHPE a certificate of environmental compatibility and public need (Certificate), pursuant to Article VII of the Public Service Law (PSL), to construct and operate the CHPE Project. The Certificate requires that, prior to construction of any portion of the Project, CHPE submit an EM&CP for review and comment.

Details of the planned work locations, including an overview map of the proposed route, is available on the Project website at: <https://chpexpress.com/overview-of-public-documents/environmental-management-construction-plan/>. In general, construction activities for this Segment are anticipated to commence in the winter of 2023. Where possible, construction will generally occur during daylight hours, though some HDD activities which require continuous operations would extend to later hours.

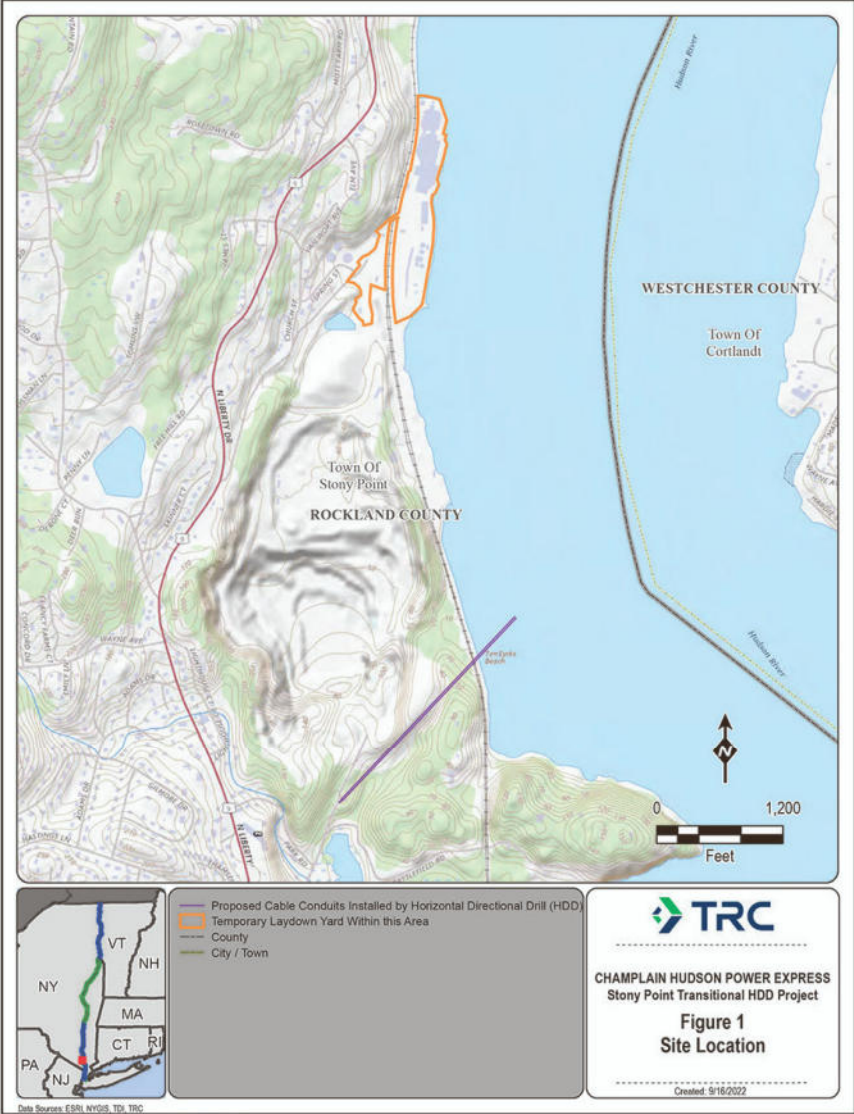
The EM&CP provides detailed information regarding how the Stony Point Transitional HDD will be constructed. The document describes and depicts the specific location of the Stony Point Transitional HDD, Construction Zone, and temporary work areas, as well as descriptions of work to be performed, plan and profile drawings depicting the Project, and protocols to be used during construction to protect the community and the environment, and to comply with the CHPE Certificate. The EM&CP must be reviewed and approved by the PSC before construction on this Segment can begin.

The full Commission docket for the Project can be accessed via the Commission’s website at: <http://documents.dps.ny.gov/public/MatterManagement/CaseMaster.aspx?MatterCaseNo=10-T-0139> and electronic copies of EM&CP documents also will be available on the Project website at <https://chpexpress.com/overview-of-public-documents/environmental-management-construction-plan/>. Paper copies of the EM&CP submission will be available for viewing at the

following local document repositories: Rose Memorial Library Association, 79 East Main St., Stony Point, NY 10980; Tomkins Cove Public Library, 419 Liberty Drive North, Tomkins Cove, NY 10986.

Comments related to the proposed Stony Point Transitional HDD EM&CP should be submitted to the Commission Secretary by email at secretary@dps.ny.gov or by mail to Michelle Phillips, Secretary, NYS Public Service Commission, 3 Empire State Plaza, Albany, NY, 12223, within 30 days of the EM&CP segment’s filing with the Commission. All comments should reference Case Number 10-T-0139.

CHPE has established a toll-free number for questions regarding the Project: 1-800-991-CHPE (2473). Questions or requests for further information can be directed to: publicoutreach@chpexpress.com or by mail to Molly Hollister, WSP USA, One Pennsylvania Plaza, New York, New York 10119.



WP-GC0949805-01



LUXURY ESCAPES

FREE DATE CHANGES

DATES FOR 2022 & 2023

BUY NOW, CHOOSE DATES LATER

★★★★★

MALDIVES

ULTIMATE ALL-INCLUSIVE PARADISE

Indulge with unlimited premium drinks, all-inclusive dining, roundtrip transfers and much more

BOOK WITH 100% CONFIDENCE*



PULLMAN MALDIVES MAAMUTAA RESORT

Discover paradise with an all-inclusive stay at Pullman Maldives Maamutaa, where stunning villas perched over blue waters provide the ultimate escape.

YOUR HANDPICKED INCLUSIONS:

- Five nights in an overwater Ocean Villa • Unlimited all-inclusive for two across 3 restaurants and 3 bars • Free-flow premium drinks including an 80-variety wine wall
- Includes roundtrip transfers to resort and all fees • Choose from included activities • Spa, fishing, diving, jet ski, snorkel & more • Complimentary minibar & Wi-Fi

5 + Nights From

\$4,299

Valued up to \$9,170

Price includes taxes and transfer fees

Use code LUX100 for an extra \$100 off

Cancel 14 days prior to check-in for 100% credit



MERCURE MALDIVES KOODDOO RESORT

Mercure Maldives All-Inclusive Adults-Only Oasis with Unlimited Drinks & Roundtrip Malé Flights

YOUR HANDPICKED INCLUSIONS:

- All-inclusive dining with daily breakfast, lunch and dinner at Alita or Vista restaurant
- Free-flow drinks, including spirits, wine, sparkling wine, beer, cocktails, soft drinks and mocktails • Roundtrip flights between Malé and Kooddoo and shuttle from Kooddoo to the resort • Snack without restraint with afternoon sweet and savoury treats available at Alita Pool Bar • Customise your in-villa minibar, filled with your choice of premium spirits, beer, wine and so much more

5 + Nights From

\$2,999

\$3,194 taxes included

Use code LUX100 for an extra \$100 off

Cancel 14 days prior to check-in for 100% credit



HIDEAWAY BEACH RESORT & SPA

Maldives Five-Star Private Island Villas with Daily Gourmet Dining, Nightly Free-Flow Drinks, Roundtrip Domestic Flights & Speedboat Transfers

YOUR HANDPICKED INCLUSIONS:

- Two beautiful infinity pools beckon, while the sparkling lagoon is never more than a few steps away • Daily breakfast, three-course lunch and dinner at a choice of four restaurants • Unlimited premium alcoholic drinks – including Tattinger champagne • Complimentary minibar replenished daily • Explore the colorful underwater world that awaits with scuba diving, snorkeling and myriad excursions, from dolphin spotting to swimming with turtles and semi-submarine adventures • Two free excursions per person, per stay, and so much more

5 + Nights From

\$4,499

Valued up to \$9,000

Price includes taxes and transfer fees

Use code LUX100 for an extra \$100 off

Cancel 14 days prior to check-in for 100% credit

914 468 4902

LUXURY ESCAPES.COM

7-DAY CHANGE OF MIND REFUND GUARANTEE DATES AVAILABLE UNTIL DECEMBER 20, 2023 WITH FREE UNLIMITED DATE CHANGES



BOOK NOW

For full terms and conditions please go to www.LuxuryEscapes.com or call the Luxury Escapes information line on 914 468 4902 . Images are for illustrative purposes only. Information correct at time of print. Blackout and surcharges dates apply, check website for full details.

ROCKLAND COUNTY TIMES

Offices: 119 Main Street (2nd Floor) • Nanuet, NY 10954-2882 • Tel (845) 627-1414 • Fax (845) 627-1411

Legal notice:

(Ref. No.: 26458)

AFFIDAVIT OF PUBLICATION

STATE OF NEW YORK)
) ss:
COUNTY OF ROCKLAND)

TERESA WARNER of the Town of Orangetown, County of Rockland, State of New York, being duly sworn says that she is the Principal Clerk of the **ROCKLAND COUNTY TIMES**, a newspaper published in the Town of Clarkstown, County of Rockland, State of New York, and that the legal notice of which the annexed is a copy was published in the issue of: *SEPTEMBER 29, 2022.*

Teresa Warner
TERESA WARNER

Sworn to before me this

29 day of *September* 2022
[Signature]
NOTARY PUBLIC, STATE OF NEW YORK

WALTER H SANCHEZ
Notary Public, State of New York
Registration No. 01SA4857488
Qualified in Queens County
Filed in Rockland County
Commission Expires April 21, 2026

THE COUNTY EXECUTIVE'S CORNER

“Preserving Rockland”

By County Executive Ed Day

I am pleased to announce that Rockland County is now ranked #15 of all local governments nationwide, for our utilization of 100% wind electricity. The list by the Environmental Protection Agency (EPA) recognizes municipalities purchasing clean, renewable energy.

In Fall of 2020, Purchasing Director Paul Brennan and myself revealed that the County of Rockland, the Rockland County Sewer District No. 1, Rockland Community College, and Rockland Green have been awarded a contract to provide 100% green/renewable wind electricity to each agency over the next three years.

In total, savings are projected at \$600,000 for the agencies, over the three-year term of the contract. But we didn't just make this move to save taxpayer dollars, we also did this to protect the environment for generations to come.

This administration is committed to preserving the beauty of this County long after our time has passed.

To achieve this, we have been moving forward with the Open Space Acquisition program which we funded through last year's budget process. Under this program we are pursuing the purchase of 6 new parkland properties totaling just over 37 acres that would be preserved.

Additionally, we are working hard to distribute every single penny of the \$63 million in federal funding we received under the American Rescue Plan. On top of grants dispersed to small businesses and restaurants, we are also on track to award close to \$10 million to municipalities and non-profits for green spaces.

The County of Rockland is also continuing efforts to bring this county infrastructure into this century.

In August, County Executive Day and the Division of Environmental Resources launched Rockland's Sustainability Project involving nearly 20 County Departments, led by the well-known environmental and planning consulting firm Barton and Loguidice.

The project will generate a long-term plan to support, focus, and improve the County's efforts in the New York State Climate Smart Communities (CSC) and Clean Energy Communities (CEC) programs. The plan will help maximize available grant funding and guide Rockland towards a green and sustainable future as efficiently as possible.



**NEWS
ON THE
WEB**

www.rocklandtimes.com

West Nyack resident featured in Discovery Orchestra's post pandemic revival

The Discovery Orchestra returned to the concert stage last Sunday with an exploration of French composer Camille Saint-Saëns' masterwork Symphony No. 3 in C Minor (the "Organ" Symphony). After a lengthy hiatus brought on by the pandemic, the Emmy Award-nominated, Summit, New Jersey-based orchestra, led by Founder and Artistic Director George Marriner Maull, taped its sixth national public television special at the Hauser Auditorium at The Pingry School in Basking Ridge, New Jersey. The special, Discover Saint-Saëns' "Organ" Symphony, features a 90-piece orchestra and is projected to begin a three-year national distribution by American Public Television in May. Comprised of a diverse roster of virtuoso musicians, including Juilliard-trained violinist Peter Winograd of West Nyack, The Discovery Orchestra has introduced millions around the world to classical music through interactive performances, dubbed Discovery Concerts.

In their new one-hour special led by Maull, a Bedminster resident, and featuring Winograd as concertmaster (or lead Violinist), The Discovery Orchestra shares an interactive exploration of Finale of Symphony No. 3. The piece was musically adapted for use in the score for the 1995 family film Babe and its 1998 sequel Babe: Pig in the City. Composed in 1886 and premiered the same year in London, the majestic "Organ" Symphony was such an overwhelming success that Saint-Saëns was quoted as saying, "I gave everything to it I was able to give. What I have here accomplished, I will never achieve again."

The live taping saw Maestro Maull engage and inform the audience members of the intricacies of the piece, including different musical themes, developments of these themes and transitions of the piece.

"The Saint-Saëns Symphony No. 3 Finale is one of the most uplifting compositions ever written by any composer, and we aim to transport audiences into the heart of this piece for a powerful boost to everyone navigating these most difficult times," said Maull of the special.

Attendees include members of several groups, like the Rhythms for Life program of the Morris County (NJ) Chapter of The Links, Newark Boys Chorus School (NBCS), the Gay Activist Alliance of Morris County (GAAMC), Drew University and the Newark School of the Arts. These diverse groups of music lovers were all united in the thunderous applause they showed the Orchestra with following the performance.

"This was an outstanding event, meticulously planned AND executed! Our students and families were thrilled and so very thankful," said NBCS Head of School Paul Chapin. "The Discovery Orchestra is a wonderful organization, and your mission is vital."

"In the words of our Program Director, Ramelle Massey, Sunday's event was absolutely fantastic!" said Marjorie Rich of Rhythms of Life. "Many thanks to the Discovery Orchestra organizers for a wonderful afternoon."

The special is being made possible by support from the New Jersey State Council on the Arts, a partner agency of the National Endowment for the Arts, as well as Michael J. Johnston, the Kosloski Family Foundation, David & Ellen Williams, Elliot & MaryJeanette Dee, Bob & Cynthia Hamburger, the F.M. Kirby Foundation, Main Street Wealth Management, Bill & Pat O'Connor, Mr. & Mrs. Sterling L. Pierson, Dan & Gail Kopp and Rachel Weinberger & Ed McGann.

COMMUNITY EVENT WEEKLY CALENDAR

SEPTEMBER 29- OCTOBER 3,
2022

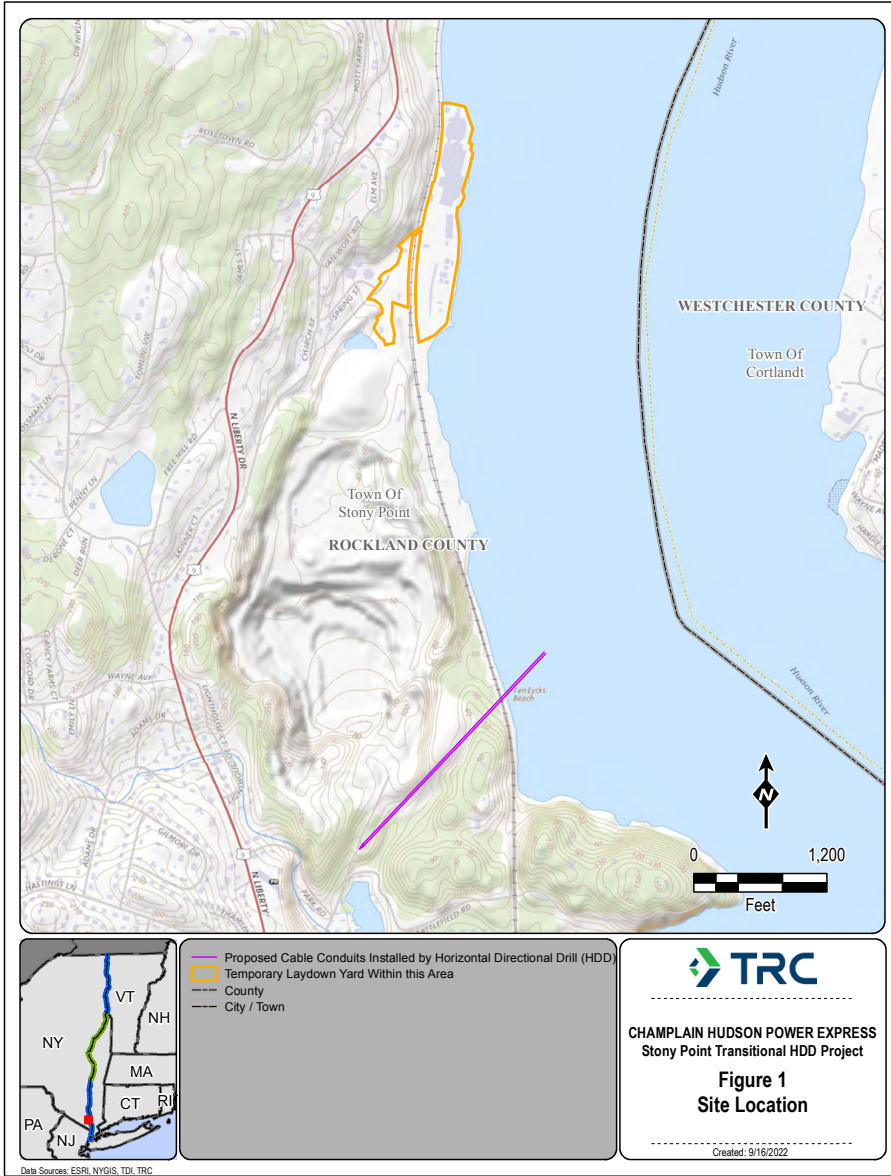
THURSDAY 9/29	FRIDAY 9/30	SATURDAY 10/1	SUNDAY 10/2	MONDAY 10/3
Nyack Farmers Market 8 AM - 2 PM Nyack Farmers Market, 119 Main St Nyack, NY	Chirp Cafe Live Music Series Presents: Fawn Segerson 7 - 9 PM Art Cafe, 65 S Broadway Nyack, NY	Live and Unplugged at The Turning Point 7 - 10 PM Turning Point, 468 Piermont Ave Piermont, NY	Haverstraw Farmers Market 9 AM - 1 PM Haverstraw Village Hall, 40 New Main St Haverstraw, NY	Tales & Tunes 10:30 - 11:00 AM Haverstraw King's Daughters Public Library, 10 W Ramapo Rd Garnerville, NY
Young Adult Social & Support Group 6 PM Rockland County Pride Center, 28 S Franklin St Nyack, NY	J.P. live at the 1840 Tavern 7:30 - 10:30 PM 1840 Tavern, 1 Strawtown Rd West Nyack, NY	Stony Point PAL Fall Festival & Family Fun Day 2022 10 AM - 4 PM Kirkbride Hall, 5 Patriot Hills Ln Stony Point, NY	BCE Oktoberfest 2022 at Kruckers 12 - 6 PM Kruckers, 77-81 Call Hollow Rd Pomona, NY	The Enchanted Garden: Colors in Motion 9 AM - 8 PM Rockland Center for the Arts, 27 S Greenbush Rd West Nyack, NY
ROCKLAND YOUTH EMPOWERMENT CENTER'S INAUGURAL EVENT 6 PM CROWNE PLAZA SUFFERN-MAHWAH, AN IHG HOTEL, THREE, EXECUTIVE BLVD SUFFERN, NY	Aries Spears 7:30 - 11:30 PM West Nyack Levity Live, 4210 Palisades Center Dr A-401 West Nyack, NY	Oktoberfest on the Roof 12 PM The Pearl River Saloon, 45-49 W Central Ave Pearl River, NY	New City Street Fair Sun, 10 AM - 5 PM 10956 New City, NY	LGBTQ+ Youth Program 3 - 8 PM Rockland County Pride Center, 28 S Franklin St Nyack, NY

NOTICE OF SUBMISSION OF ENVIRONMENTAL MANAGEMENT AND CONSTRUCTION PLAN FOR CHAMPLAIN HUDSON POWER EXPRESS

On or about September 23, 2022, CHPE LLC and its wholly-owned subsidiary, CHPE Properties, Inc. (collectively referred to as "CHPE") intend to submit an Environmental Management & Construction Plan ("EM&CP") for the Stony Point Transitional Horizontal Directional Drill ("HDD") portion of the proposed Champlain Hudson Power Express ("CHPE") Project. The Stony Point Transitional HDD consists of a transitional horizontal directional drill in the Town of Stony Point, Rockland County, which will connect an overland segment of the CHPE line (Stony Point to Haverstraw Overland Segment 12) with the Lower Hudson River Marine Segment (Segment 20), and the installation of conduits in this location. This EM&CP also includes a temporary laydown yard at Tomkins Cove, also in the Town of Stony Point.

On April 18, 2013, the NYS Public Service Commission (Commission) issued to CHPE a certificate of environmental compatibility and public need (Certificate), pursuant to Article VII of the Public Service Law (PSL), to construct and operate the CHPE Project. The Certificate requires that, prior to construction of any portion of the Project, CHPE submit an EM&CP for review and comment.

Details of the planned work locations, including an overview map of the proposed route, is available on the Project website at: <https://chp-express.com/overview-of-public-documents/environmental-management-construction-plan/>. In general, construction activities for this Segment are anticipated to commence in the winter of 2023. Where possible, construction will generally occur during daylight hours, though some HDD activities which require continuous operations would extend to later hours.



The EM&CP provides detailed information regarding how the Stony Point Transitional HDD will be constructed. The document describes and depicts the specific location of the Stony Point Transitional HDD, Construction Zone, and temporary work areas, as well as descriptions of work to be performed, plan and profile drawings depicting the Project, and protocols to be used during construction to protect the community and the environment, and to comply with the CHPE Certificate. The EM&CP must be reviewed and approved by the PSC before construction on this Segment can begin.

The full Commission docket for the Project can be accessed via the Commission's website at: <http://documents.dps.ny.gov/public/MatterManagement/CaseMaster.aspx?MatterCaseNo=10-T-0139> and electronic copies of EM&CP documents also will be available on the Project website at <https://chpexpress.com/overview-of-public-documents/environmental-management-construction-plan/>. Paper copies of the EM&CP submission will be available for viewing at the following local document repositories: Rose Memorial Library Association, 79 East Main St., Stony Point, NY 10980; Tomkins Cove Public Library, 419 Liberty Drive North, Tomkins Cove, NY 10986.

Comments related to the proposed Stony Point Transitional HDD EM&CP should be submitted to the Commission Secretary by email at secretary@dps.ny.gov or by mail to Michelle Phillips, Secretary, NYS Public Service Commission, 3 Empire State Plaza, Albany, NY, 12223, within 30 days of the EM&CP segment's filing with the Commission. All comments should reference Case Number 10-T-0139.

CHPE has established a toll-free number for questions regarding the Project: 1-800-991-CHPE (2473). Questions or requests for further information can be directed to: publicoutreach@chpexpress.com or by mail to Molly Hollister, WSP USA, One Pennsylvania Plaza, New York, New York 10119.



Attachment B

STATE OF NEW YORK
PUBLIC SERVICE COMMISSION

Application of Champlain Hudson Power Express, Inc.
for a Certificate of Environmental Compatibility
and Public Need Pursuant to Article VII of the PSL
for the Construction, Operation and Maintenance
of a High Voltage Direct Current Circuit from the
Canadian Border to New York City.

CASE NO. 10-T-0139

AFFIDAVIT OF SERVICE


STATE OF NEW YORK)
COUNTY OF ALBANY) ss:

YVONNE LEO, being duly sworn, deposes and says that on the 23rd day of September, 2022, she served a copy of the attached General Stakeholder Letter upon the attached list, by first class mail.



Yvonne Leo

Sworn to me before me this
30th day of September, 2022.



Notary Public

LISA GORMAN
Notary Public, State of New York
Qualified in Rensselaer County
No. 01GO6057069
Commission Expires April 9, 2023



Notice of Submission of Stony Point Transitional HDD EM&CP For the Champlain Hudson Power Express Line

Dear Stakeholder/Record Interest Holder,

On or about September 23, 2022, CHPE LLC and its wholly-owned subsidiary, CHPE Properties, Inc. (collectively referred to as "CHPE") intend to submit an Environmental Management & Construction Plan ("EM&CP") for the Stony Point Transitional Horizontal Directional Drill ("HDD") portion of the proposed Champlain Hudson Power Express ("CHPE") Project. The Stony Point Transitional HDD consists of a transitional horizontal directional drill in the Town of Stony Point, Rockland County, which will connect an overland segment of the CHPE line (Stony Point to Haverstraw Overland Segment 12) with the Lower Hudson River Marine Segment (Segment 20), and the installation of conduits in this location. This EM&CP also includes a temporary laydown yard at Tomkins Cove, also in the Town of Stony Point.

The New York State Public Service Commission ("PSC") issued a Certificate of Environmental Compatibility and Public Need ("Certificate") to CHPE on April 18, 2013 to construct and operate the Project. Pursuant to that Certificate, CHPE is required to circulate notices to certain landowners, utility owners, municipalities and agencies near the proposed Stony Point Transitional HDD route location indicating that the Stony Point Transitional HDD EM&CP will be filed and providing links and contact information which stakeholders can use to obtain further information or to submit comments.

The EM&CP provides detailed information regarding how the Stony Point Transitional HDD will be constructed. The document describes and depicts the specific location of the Stony Point Transitional HDD, Construction Zone, and temporary work areas, as well as descriptions of work to be performed, plan and profile drawings depicting the Project, and protocols to be used during construction to protect the community and the environment, and to comply with the CHPE Certificate. The EM&CP must be reviewed and approved by the PSC before construction on this Segment can begin.

An overview map of the proposed route accompanies this notice. Further details of the planned work locations will be made available on the Project website at: <https://chpexpress.com/overview-of-public-documents/environmental-management-construction-plan/>. In general, construction activities for this Segment are anticipated to commence in the winter of 2023. Where possible, construction will generally occur during daylight hours, though some HDD activities which require continuous operations would extend to later hours.

Interest to be Acquired

You have been identified as a stakeholder or the holder of a record interest in property being utilized by CHPE for Stony Point Transitional HDD. Record interest holders own or hold an easement, lien, mortgage, or other recorded interest in land to be used on a temporary or permanent basis by CHPE for the construction or operation of the Facility. This notice is intended to provide notice that CHPE is acquiring an interest in lands associated with the Stony Point



Transitional HDD, in accordance with CHPE's Certificate. As noted above, the Stony Point Transitional HDD and related areas are depicted on the accompanying map.

Contact Information and Document Repositories

CHPE has established a toll-free number for questions regarding the Project: 1-800-991-CHPE (2473). Questions or requests for further information can be directed to publicoutreach@chpexpress.com or by mail to Molly Hollister, WSP USA, One Pennsylvania Plaza, New York, New York 10119.

The Stony Point Transitional HDD EM&CP documents will be available on the PSC's website at <http://documents.dps.ny.gov/public/MatterManagement/CaseMaster.aspx?MatterCaseNo=10-T-0139> and on the Project website <https://chpexpress.com/overview-of-public-documents/environmental-management-construction-plan/> once they are filed.

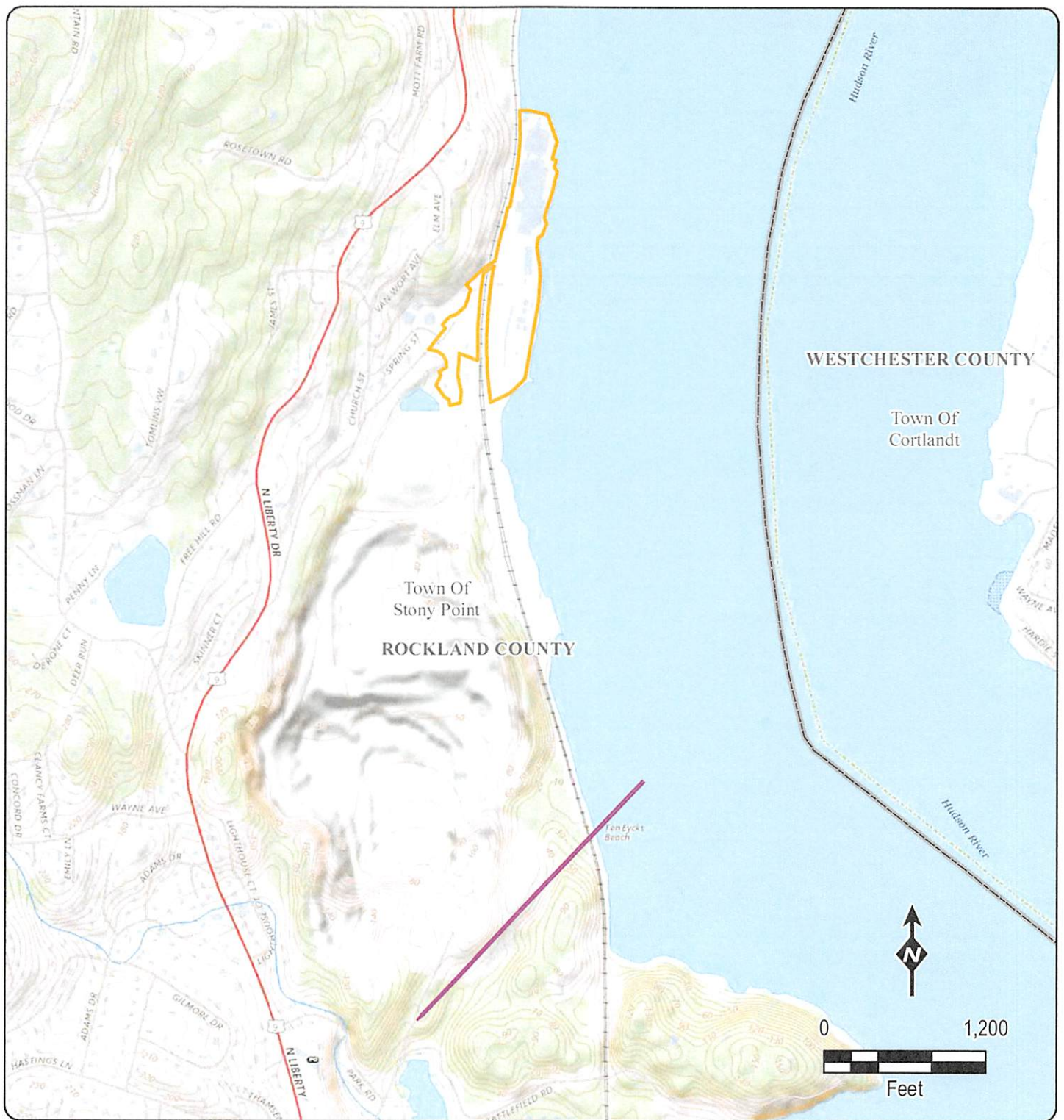
Paper copies of the EM&CP submission will be available for viewing at the following local document repositories: Rose Memorial Library Association, 79 East Main St., Stony Point, NY 10980; Tomkins Cove Public Library, 419 Liberty Drive North, Tomkins Cove, NY 10986.

Filing Comments

Any person wishing to be heard by the Commission on any matter related to the proposed EM&CP may file written comments with the Commission Secretary by email at secretary@dps.ny.gov or by mail to Michelle Phillips, Secretary, NYS Public Service Commission, 3 Empire State Plaza, Albany, NY, 12223, within 30 days of the EM&CP segment's filing with the Commission. All comments should reference Case Number 10-T-0139.

Yours truly,

Josh Bagnato
Vice President, Development



- Proposed Cable Conduits Installed by Horizontal Directional Drill (HDD)
- Temporary Laydown Yard Within this Area
- County
- City / Town



CHAMPLAIN HUDSON POWER EXPRESS
Stony Point Transitional HDD Project

Figure 1
Site Location

Created: 9/16/2022

Owner	Address	City	State	Zip
Genon Lovett LLC	211 CARNEGIE CTR	PRINCETON	NJ	08540-6299
CSX Transportation, Inc.	500 WATER STREET, J180	JACKSONVILLE	FL	32202
T Lovett LLC	1155 PERIMETER CTR	ATLANTA	GA	30338-5463
Sharon Hoke	PO BOX 105	TOMKINS COVE	NY	10986
Tilcon New York, Inc.	PO BOX 517	WHARTON	NJ	07885
David Kozlow	5 HALL PL	EASTCHESTER	NY	10709-3115
Pal Comm Int.	BEAR MOUNTAIN NY	BEAR MOUNTAIN	NY	10911

Attachment C

STATE OF NEW YORK
PUBLIC SERVICE COMMISSION

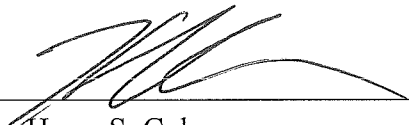
Application of Champlain Hudson Power Express, Inc. for a
Certificate of Environmental Compatibility and Public Need
Pursuant to Article VII of the PSL for the Construction,
Operation and Maintenance of a High Voltage Direct Current
Circuit from the Canadian Border to New York City

AFFIDAVIT OF
SERVICE

Case No. 10-T-0139

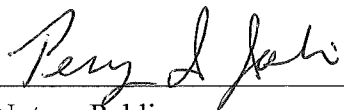
STATE OF NEW YORK)
COUNTY OF ALBANY) ss.:

Harry S. Cohn, being duly sworn, deposes and says that on the 4th day of
October, 2022, they served paper and/or electronic copies (USB flash drives) of the
Environmental Management and Construction Plan for the Stony Point Transitional HDD
Segment of the Champlain Hudson Power Express ("CHPE") Project in accordance with the
attached Service List.



Harry S. Cohn

Sworn to me before me this
4th day of October, 2022



Notary Public
TERRY I. JOSLIN
Notary Public, State of New York
Qualified in Saratoga County
My Commission Expires 1/31/26

**Champlain Hudson Power Express, Inc. – Stony Point HDD Environmental Management & Construction
Plan Service List**

CASE No. 10-T-0139: Application of Champlain Hudson Power Express, Inc. for a Certificate of Environmental Compatibility and Public Need Pursuant to Article VII of the PSL for the Construction, Operation and Maintenance of a High Voltage Direct Current Circuit from the Canadian Border to New York City.

NAME & ADDRESS	NUMBER/TYPE OF COPIES SENT BY OVERNIGHT DELIVERY
NYS Department of Public Service Rory M. Christian, Chair & CEO ATTN: Matt Smith, Project Manager Empire State Plaza Agency Building 3 Albany, NY 12223-1350	5 Print Copies, 2 USB copies
NYS Department of Environmental Conservation Basil Seggos, Commissioner ATTN: Karen Gaidasz, Project Manager CENTRAL OFFICE 625 Broadway Albany, NY 12233-0001	2 Print Copies, 1 USB Copy
NYS Department of Environmental Conservation REGION 3 ATTN: Kelly Turturro, Regional Director 21 South Putt Corners Rd. New Paltz, NY 12561-1696	1 Print Copy, 1 USB Copy
NYS Office of Parks, Recreation, and Historic Preservation Erik Kulleseid, Commissioner Albany, NY 12238	1 Abridged Print Copy (Narrative and Appendix A Only) 1 USB Copy
NYS Department of Agriculture and Markets Richard Ball, Commissioner ATTN: Tara B. Wells, Senior Attorney 10B Airline Drive Albany, NY 12235	1 Abridged Print Copy (Narrative and Appendix A Only) 1 USB Copy
NYS Department of Transportation CENTRAL OFFICE Marie Therese Dominguez, Commissioner ATTN: Janice McLachlan, Acting Asst. Commissioner & General Counsel 50 Wolf Road Albany, NY 12232	1 Abridged Print Copy (Narrative and Appendix A Only) 1 USB Copy
NYS Department of Transportation, REGION 8 ATTN: Lance MacMillan, Regional Director Eleanor Roosevelt State Office Building 4 Burnett Boulevard Poughkeepsie, NY 12603	1 Abridged Print Copy (Narrative and Appendix A Only) 1 USB Copy
NYS Department of State ATTN: Matt Maraglio 99 Washington Avenue, Suite 1010 Albany, NY 12231-0001	Full-Sized Printed Maps (Appendix A) 1 USB Copy
Rockland County ATTN: Ed Day, County Executive ATTN: Ian M. Coyle, County Administrator 11 New Hempstead Rd. New City, NY 10956	2 Abridged Print Copies (Narrative and Appendix A Only) 1 USB Copy

Rose Memorial Library ATTN: Alice Meacham, Director 79 East Main St. Stony Point, NY 10980	1 Print Copy
Tomkins Cove Public Library ATTN: Janet Lukas, Library Manager 419 Liberty Drive North Tomkins Cove, NY 10986	1 Print Copy
Town of Stony Point ATTN: Jim Monaghan, Town Supervisor ATTN: Karl Javenes, Highway Superintendent C/o Megan Carey, Town Clerk 74 East Main St. Stony Point, NY 10980	2 Abridged Print Copies (Narrative and Appendix A Only) 1 USB Copy
Stony Point Town Hall (For Public Inspection) ATTN: Megan Carey, Town Clerk 74 East Main St. Stony Point, NY 10980	1 Print Copy
Allan R. Beers Coordinator of Environmental Resources County of Rockland 50 Sanatorium Rd. Building P Pomona, NY 10970	1 Abridged Print Copy (Narrative and Appendix A Only) 1 USB Copy
George Diamantopoulos Attorney Seham, Seham, Meltz & Petersen, LLP 199 Main St., 7 th Fl White Plains, NY 10601	1 Abridged Print Copy (Narrative and Appendix A Only) 1 USB Copy
Linda Grant Senior Assistant County Attorney County of Rockland 11 New Hempstead Rd. 3 rd Fl New City, NY 10956	1 Abridged Print Copy (Narrative and Appendix A Only) 1 USB Copy
Jurgen Wekerle Energy Committee Sierra Club Atlantic Chapter 744 Broadway Albany, NY 12207	1 Abridged Print Copy (Narrative and Appendix A Only) 1 USB Copy


Attachment D

NYS Department of Public Service


Home Privacy Policy Help

[← Back to Matter Filing](#)


Fatemma Shadwick | [Log Out](#)



Matter Filing Info



Document Upload



Confirmation

Matter Filing

✓ The filing for matter/case number 10-T-0139 has been submitted for processing by the Secretary's office.

Documents Filed

Document Title	Document Type	Security	File Name	File Size
220929 Cover Letter Filing Stony Point Transitional HDD EMCP	Correspondence	Public	220929 Cover Letter Filing Stony Point Transitional HDD EMCP.pdf	243.47 KB
Appendix A - Plan and Profile Drawings	Plans and Proposals	Public	Appendix A - Plan and Profile Drawings.pdf	15.07 MB
Appendix B - EM&CP Filing Notices	Plans and Proposals	Public	Appendix B - EM&CP Filing Notices.pdf	860.55 KB
Appendix C - Justification for Deviation Zone Excursions	Plans and Proposals	Public	Appendix C - Justification for Deviation Zone Excursions.pdf	2.59 MB
Appendix D - Compliance Assurance Plan-Public	Plans and Proposals	Public	Appendix D - Compliance Assurance Plan-Public.pdf	459.07 KB
Appendix E - Documentation of CI Consultations	Plans and Proposals	Public	Appendix E - Documentation of CI Consultations.pdf	6.32 MB
Appendix F - HDD Installation Manual - Part 1 of 2	Plans and Proposals	Public	Appendix F - HDD Installation Manual - Part 1 of 2.pdf	19.61 MB
Appendix F - HDD Installation Manual - Part 2 of 2	Plans and Proposals	Public	Appendix F - HDD Installation Manual - Part 2 of 2.pdf	7.57 MB
Appendix G - Public Involvement and Complaint Resolution Plan	Plans and Proposals	Public	Appendix G - Public Involvement and Complaint Resolution Plan.pdf	979.05 KB

Document Title	Document Type	Security	File Name	File Size
Appendix H - SWPPP	Plans and Proposals	Public	Appendix H - SWPPP.pdf	10.95 MB
Appendix I - Waterbody Inventory and Wetland Delineation Report	Plans and Proposals	Public	Appendix I - Waterbody Inventory and Wetland Delineation Report.pdf	10.70 MB
Appendix J - Invasive Species Control Plan	Plans and Proposals	Public	Appendix J - Invasive Species Control Plan.pdf	6.58 MB
Appendix M - Agency Correspondence	Plans and Proposals	Public	Appendix M - Agency Correspondence.pdf	5.75 MB
EM&CP Stony Point Transitional HDD Narrative	Plans and Proposals	Public	EM&CP Stony Point Transitional HDD Narrative.pdf	3.51 MB

NYS Department of Public Service

[Home](#) [Privacy Policy](#) [Help](#)

[← Back to Matter Filing](#)

Fatemma Shadwick | [Log Out](#)

Matter Filing Info

Document Upload

Confirmation

Matter Filing

✓ The filing for matter/case number 10-T-0139 has been submitted for processing by the Secretary's office.

Documents Filed

Document Title	Document Type	Security	File Name	File Size
Appendix K - Corrosive Effects Study (June 2022)	Correspondence	Public	Appendix K - Corrosive Effects Study (June 2022).pdf	1.52 MB
Appendix L - Cable Ampacity and Thermal Calculations. (June 2022)pdf	Plans and Proposals	Public	Appendix L - Cable Ampacity and Thermal Calculations. (June 2022)pdf.pdf	596.04 KB

Attachment E

11/23/2022

Environmental Management & Construction Plan

Point of Contact

Molly Hollister – CHPE Construction Representative

WSP USA, One Pennsylvania Plaza, New York, New York 10119

Construction Hotline & Email

1-800-991-CHPE (2473)

publicoutreach@chpexpress.com

Construction Comments and Questions Form

Temporary Laydown Yards EM&CP 11/17/22

221117 Cover Letter Filing Temporary Laydown Yard EMCP

[*221117 Cover Letter Filing Temporary Laydown Yard EMCP.pdf*](#)

11/23/2022

Appendix A. Agency Correspondence[Appendix A. Agency Correspondence.pdf](#)**Appendix B. EM&CP Filing Notices**[Appendix B. EM&CP Filing Notices.pdf](#)**Appendix C. Laydown Yard Drawings**[Appendix C. Laydown Yard Drawings.pdf](#)**Appendix D. Crosswalk**[Appendix D. Crosswalk.pdf](#)**Appendix E. Justification for Excursions from the Deviation Zone**[Appendix E. Justification for Excursions from the Deviation Zone.pdf](#)**Appendix F. Compliance Assurance Plan_Rev.4**[Appendix F. Compliance Assurance Plan_Rev.4.pdf](#)**Appendix G. Stormwater Polution Prevention Plan**[Appendix G. Stormwater Polution Prevention Plan.pdf](#)**Appendix G.1 SWPPP – Fort Edward Yard**[Appendix G.1 SWPPP – Fort Edward Yard.pdf](#)**Appendix G.2 SWPPP – Bethlehem Yard**[Appendix G.2 SWPPP – Bethlehem Yard.pdf](#)**Appendix G.3 SWPPP – Cocksackie Yard**[Appendix G.3 SWPPP – Cocksackie Yard.pdf](#)**Appendix H. Construction and Safety Policies and Procedures**[Appendix H. Construction and Safety Policies and Procedures.pdf](#)**Appendix I. Public Involvement and Complaint Resolution Plan**[Appendix I. Public Involvement and Complaint Resolution Plan.pdf](#)**Appendix J. HDD Preliminary Site Investigation and Planning Report & IRR Plan**[Appendix J. HDD Preliminary Site Investigation and Planning Report & IRR Plan.pdf](#)**Appendix K. SPCC**

[Appendix K. SPCC.pdf](#)

11/23/2022

Appendix L. Soil and Materials Management Plan

[Appendix L. Soil and Materials Management Plan.pdf](#)

Appendix M. Waterbody Inventory and Wetland Delineation Report

[Appendix M. Waterbody Inventory and Wetland Delineation Report.pdf](#)

Appendix N. Invasive Species Control Plan

[Appendix N. Invasive Species Control Plan.pdf](#)

Appendix O. CRMP for Laydown Yards_REDACTED

[Appendix O. CRMP for Laydown Yards_REDACTED.pdf](#)

Appendix P. Corrosive Effects Study

[Appendix P. Corrosive Effects Study.pdf](#)

Appendix Q. Cable Ampacity and Thermal Calculations

[Appendix Q. Cable Ampacity and Thermal Calculations.pdf](#)

Appendix R. Documentation of CI Constultations

[Appendix R. Documentation of CI Constultations.pdf](#)

Appendix S. Overland Rock Removal Plan

[Appendix S. Overland Rock Removal Plan.pdf](#)

Appendix T. Rare Threatened and Endangered Species Documentation_REDACTED

[Appendix T. Rare Threatened and Endangered Species Documentation_REDACTED.pdf](#)

CHPE Laydown Yards EM&CP Narrative

[CHPE Laydown Yards EM&CP Narrative.pdf](#)

General Stakeholder Notice of Submission of EMCP

[General Stakeholder Notice of Submission of EMCP.pdf](#)

Notice of Submission of Temporary Laydown Yard EM&CP For the Champlain Hudson Power Express Line

[*Notice of Submission of Temporary Laydown Yard EM&CP For the Champlain Hudson Power Express Line*](#) 11/23/2022

Order Approving Segments 1 & 2 EM&CP – 10/13/2022

[*Order Approving Segment 1 and 2 EM&CP*](#)

EM&CP Stony Point Transitional HDD – 9/29/2022

Cover Letter Filing Stony Point Transitional HDD EMCP

[*Cover Letter Filing Stony Point Transitional HDD EMCP*](#)

EM&CP Stony Point Transitional HDD Narrative

[*EM&CP Stony Point Transitional HDD Narrative*](#)

Appendix A – Plan and Profile Drawings

[*Appendix A – Plan and Profile Drawings*](#)

Appendix B – EM&CP Filing Notices

[*Appendix B – EM&CP Filing Notices*](#)

Appendix C – Justification for Deviation Zone Excursions

[*Appendix C – Justification for Deviation Zone Excursions*](#)

Appendix D – Compliance Assurance Plan-Public

[*Appendix D – Compliance Assurance Plan-Public*](#)

Appendix E – Documentation of CI Consultations

[*Appendix E – Documentation of CI Consultations*](#)

Appendix F – HDD Installation Manual

- [*Appendix F – HDD Installation Manual – Part 1 of 2*](#)
- [*Appendix F – HDD Installation Manual – Part 2 of 2*](#)

Appendix G – Public Involvement and Complaint Resolution Plan

11/23/2022

[*Appendix G – Public Involvement and Complaint Resolution Plan*](#)

Appendix H – SWPPP

[*Appendix H – SWPPP*](#)

Appendix I – Waterbody Inventory and Wetland Delineation Report

[*Appendix I – Waterbody Inventory and Wetland Delineation Report*](#)

Appendix J – Invasive Species Control Plan

[*Appendix J – Invasive Species Control Plan*](#)

Appendix K – Corrosive Effects Study (June 2022)

[*Appendix K – Corrosive Effects Study \(June 2022\)*](#)

Appendix L – Cable Ampacity and Thermal Calculations (June 2022)

[*Appendix L – Cable Ampacity and Thermal Calculations. \(June 2022\).pdf*](#)

Appendix M – Agency Correspondence

[*Appendix M – Agency Correspondence*](#)

EM&CP Segment 1 and 2 Revised – 9/21/2022

Cover Letter Filing Revised Segment 1 and 2 EMCP

[*220921 Cover Letter Filing Revised Segment 1 and 2 EMCP*](#)

Environmental Management and Construction Plan Narrative – Segments 1 and 2

[*Environmental Management and Construction Plan Narrative – Segments 1 and 2_REV1*](#)

Confidentiality Request for Revised Appendix O

[*220921 Confidentiality Request for Revised Appendix O*](#)

Appendix A. Agency Correspondence

11/23/2022

[Appendix A. Agency Correspondence_REV1](#)

Appendix B. EM&CP Filing Notices

[Appendix B. EM&CP Filing Notices](#)

Appendix C. Plan and Profiles, ESC, MPT

- [Appendix C. Plan and Profiles, ESC, MPT_REV1_part1of15](#)
- [Appendix C. Plan and Profiles, ESC, MPT_REV1_part2of15](#)
- [Appendix C. Plan and Profiles, ESC, MPT_REV1_part3of15](#)
- [Appendix C. Plan and Profiles, ESC, MPT_REV1_part4of15](#)
- [Appendix C. Plan and Profiles, ESC, MPT_REV1_part5of15](#)
- [Appendix C. Plan and Profiles, ESC, MPT_REV1_part6of15](#)
- [Appendix C. Plan and Profiles, ESC, MPT_REV1_part7of15](#)
- [Appendix C. Plan and Profiles, ESC, MPT_REV1_part8of15](#)
- [Appendix C. Plan and Profiles, ESC, MPT_REV1_part9of15](#)
- [Appendix C. Plan and Profiles, ESC, MPT_REV1_part10of15](#)
- [Appendix C. Plan and Profiles, ESC, MPT_REV1_part11of15](#)
- [Appendix C. Plan and Profiles, ESC, MPT_REV1_part12of15](#)
- [Appendix C. Plan and Profiles, ESC, MPT_REV1_part13of15](#)
- [Appendix C. Plan and Profiles, ESC, MPT_REV1_part14of15](#)
- [Appendix C. Plan and Profiles, ESC, MPT_REV1_part15of15](#)

Appendix D. Compliance Crosswalk

[Appendix D. Compliance Crosswalk_REV1](#)

Appendix E. Work Outside the Deviation Zone

[Appendix E. Work Outside the Deviation Zone_REV1](#)

Appendix F. Compliance Assurance Plan

[Appendix F. Compliance Assurance Plan_REV1](#)

Appendix G. Stormwater Pollution Prevention Plan

11/23/2022

- [Appendix G. Stormwater Pollution Prevention Plan_REV1_part1of11](#)
- [Appendix G. Stormwater Pollution Prevention Plan_REV1_part2of11](#)
- [Appendix G. Stormwater Pollution Prevention Plan_REV1_part3of11](#)
- [Appendix G. Stormwater Pollution Prevention Plan_REV1_part4of11](#)
- [Appendix G. Stormwater Pollution Prevention Plan_REV1_part5of11](#)
- [Appendix G. Stormwater Pollution Prevention Plan_REV1_part6of11](#)
- [Appendix G. Stormwater Pollution Prevention Plan_REV1_part7of11](#)
- [Appendix G. Stormwater Pollution Prevention Plan_REV1_part8of11](#)
- [Appendix G. Stormwater Pollution Prevention Plan_REV1_part9of11](#)
- [Appendix G. Stormwater Pollution Prevention Plan_REV1_part10of11](#)
- [Appendix G. Stormwater Pollution Prevention Plan_REV1_part11of11](#)

Appendix H. Construction and Safety Policies and Procedures

[Appendix H. Construction and Safety Policies and Procedures_REV1](#)

Appendix I. Public Involvement and Complaint Resolution Plan

[Appendix I. Public Involvement and Complaint Resolution Plan_REV1](#)

Appendix J. HDD Prelim Site Inv and Inadvertent Release and Contingency Plan

- [Appendix J. HDD Prelim Site Inv and Inadvertent Release and Contingency Plan_REV1_part1of8](#)
- [Appendix J. HDD Prelim Site Inv and Inadvertent Release and Contingency Plan_REV1_part2of8](#)
- [Appendix J. HDD Prelim Site Inv and Inadvertent Release and Contingency Plan_REV1_part3of8](#)
- [Appendix J. HDD Prelim Site Inv and Inadvertent Release and Contingency Plan_REV1_part4of8](#)
- [Appendix J. HDD Prelim Site Inv and Inadvertent Release and Contingency Plan_REV1_part5of8](#)
- [Appendix J. HDD Prelim Site Inv and Inadvertent Release and Contingency Plan_REV1_part6of8](#)
- [Appendix J. HDD Prelim Site Inv and Inadvertent Release and Contingency Plan_REV1_part7of8](#)
- [Appendix J. HDD Prelim Site Inv and Inadvertent Release and Contingency Plan_REV1_part8of8](#)

[Plan_REV1_part8of8](#)

11/23/2022

Appendix K. Spill Prevention Control and Countermeasures Plan

[Appendix K. Spill Prevention Control and Countermeasures Plan_REV1](#)

Appendix L. Soil and Materials Management Plan

[Appendix L. Soil and Materials Management Plan_REV1](#)

Appendix M. Waterbody Inventory and Wetland Delineation Report

- [Appendix M. Waterbody Inventory and Wetland Delineation Report_REV1_part1of10](#)
- [Appendix M. Waterbody Inventory and Wetland Delineation Report_REV1_part2of10](#)
- [Appendix M. Waterbody Inventory and Wetland Delineation Report_REV1_part3of10](#)
- [Appendix M. Waterbody Inventory and Wetland Delineation Report_REV1_part4of10](#)
- [Appendix M. Waterbody Inventory and Wetland Delineation Report_REV1_part5of10](#)
- [Appendix M. Waterbody Inventory and Wetland Delineation Report_REV1_part6of10](#)
- [Appendix M. Waterbody Inventory and Wetland Delineation Report_REV1_part7of10](#)
- [Appendix M. Waterbody Inventory and Wetland Delineation Report_REV1_part8of10](#)
- [Appendix M. Waterbody Inventory and Wetland Delineation Report_REV1_part9of10](#)
- [Appendix M. Waterbody Inventory and Wetland Delineation Report_REV1_part10of10](#)

Appendix N. Invasive Species Control Plan

[Appendix N. Invasive Species Control Plan_REV1](#)

Appendix O. Cultural Resources Management Plan

[Appendix O. Cultural Resources Management Plan- REDACTED_REV2](#)

11/23/2022

Appendix P. Capacity Ampacity and Thermal Calculations

[Appendix P. Capacity Ampacity and Thermal Calculations](#)

Appendix Q. Corrosive Effects Study

[Appendix Q. Corrosive Effects Study](#)

Appendix R. Documentation of CI Consultation Occurred

[Appendix R. Documentation of CI Consultation Occurred_REV1](#)

Appendix S. Overland Rock Removal Plan

[Appendix S. Overland Rock Removal Plan](#)

EM&CP Filing Segment 1 and 2 – 4/15/2022

EM&CP Cover Letter Filing Segment 1 & 2

[220415-Cover-Letter-Filing-Segment-1-and-2-EMCP.pdf](#)

CHPE Segment 1 & 2 EM&CP Narrative

[220415_CHPE-Segment-1-and-2-EMCP-Narrative.pdf](#)

Confidentiality Request for Appendix O

[220415-Confidentiality-Request-for-Appendix-O.pdf](#)

Appendix A. Agency Correspondence

[Appendix-A.-Agency-Correspondence.pdf](#)

Appendix B. EM&CP Filing Notices

[Appendix-B.-EMCP-Filing-Notices-1.pdf](#)

Appendix C. Plan and Profile Drawings

- [Appendix-C.-Plan-and-Profile-Drawings_Part1-of-15.pdf](#)

11/23/2022

- [*Appendix-C.-Plan-and-Profile-Drawings_Part2-of-15.pdf*](#)
- [*Appendix-C.-Plan-and-Profile-Drawings_Part3-of-15.pdf*](#)
- [*Appendix-C.-Plan-and-Profile-Drawings_Part4-of-15.pdf*](#)
- [*Appendix-C.-Plan-and-Profile-Drawings_Part5-of-15.pdf*](#)
- [*Appendix-C.-Plan-and-Profile-Drawings_Part6-of-15.pdf*](#)
- [*Appendix-C.-Plan-and-Profile-Drawings_Part7-of-15.pdf*](#)
- [*Appendix-C.-Plan-and-Profile-Drawings_Part8-of-15.pdf*](#)
- [*Appendix-C.-Plan-and-Profile-Drawings_Part9-of-15.pdf*](#)
- [*Appendix-C.-Plan-and-Profile-Drawings_Part10-of-15.pdf*](#)
- [*Appendix-C.-Plan-and-Profile-Drawings_Part11-of-15.pdf*](#)
- [*Appendix-C.-Plan-and-Profile-Drawings_Part12-of-15.pdf*](#)
- [*Appendix-C.-Plan-and-Profile-Drawings_Part13-of-15.pdf*](#)
- [*Appendix-C.-Plan-and-Profile-Drawings_Part14-of-15.pdf*](#)
- [*Appendix-C.-Plan-and-Profile-Drawings_Part15-of-15.pdf*](#)

Appendix D. EM&CP Crosswalk

[*Appendix-D.-EMCP-Crosswalk.pdf*](#)

Appendix E. Justification for Excursions Outside the Deviation Zone

[*Appendix-E.-Justification-for-Excursions-Outside-the-Deviation-Zone.pdf*](#)

Appendix F. Compliance Assurance Plan

[*Appendix-F.-Compliance-Assurance-Plan.pdf*](#)

Appendix G. Stormwater Pollution Prevention Plan

- [*Appendix-G.-Stormwater-Pollution-Prevention-Plan_Part1-of-7.pdf*](#)
- [*Appendix-G.-Stormwater-Pollution-Prevention-Plan_Part2-of-7.pdf*](#)
- [*Appendix-G.-Stormwater-Pollution-Prevention-Plan_Part3-of-7.pdf*](#)
- [*Appendix-G.-Stormwater-Pollution-Prevention-Plan_Part4-of-7.pdf*](#)
- [*Appendix-G.-Stormwater-Pollution-Prevention-Plan_Part5-of-7.pdf*](#)
- [*Appendix-G.-Stormwater-Pollution-Prevention-Plan_Part6-of-7.pdf*](#)
- [*Appendix-G.-Stormwater-Pollution-Prevention-Plan_Part7-of-7.pdf*](#)

Appendix H. Construction & Safety Policies & Procedures

[Appendix-H.-Construction-and-Safety-Policies-and-Procedures.pdf](#)

11/23/2022

Appendix I. Public Involvement Plan & Complaint Resolution Plan

[Appendix-I.-Public-Involvement-Plan-and-Complaint-Resolution-Plan.pdf](#)

Appendix J. HDD Preliminary Site Investigation & Planning Report & Inadvertent Release & Recover Plan (HDD)

- [Appendix-J.-HDD-Preliminary-Site-Investigation-and-Planning-Report-and-Inadvertent-Release-and-Recover-Plan-HDD_Part1-of-2.pdf](#)
- [Appendix-J.-HDD-Preliminary-Site-Investigation-and-Planning-Report-and-Inadvertent-Release-and-Recover-Plan-HDD_Part2-of-2.pdf](#)

Appendix K. Spill Prevention Control & Countermeasures Plan

[Appendix-K.-Spill-Prevention-Control-and-Countermeasures-Plan-1.pdf](#)

Appendix L. Soil Management Plan

[Appendix-L.-Soil-Management-Plan.pdf](#)

Appendix M. Waterbody & Wetland Inventory & Delineation Report

- [Appendix-M.-Waterbody-and-Wetland-Inventory-and-Delineation-Report_Part1-of-10.pdf](#)
- [Appendix-M.-Waterbody-and-Wetland-Inventory-and-Delineation-Report_Part2-of-10.pdf](#)
- [Appendix-M.-Waterbody-and-Wetland-Inventory-and-Delineation-Report_Part3-of-10.pdf](#)
- [Appendix-M.-Waterbody-and-Wetland-Inventory-and-Delineation-Report_Part4-of-10.pdf](#)
- [Appendix-M.-Waterbody-and-Wetland-Inventory-and-Delineation-Report_Part5-of-10.pdf](#)
- [Appendix-M.-Waterbody-and-Wetland-Inventory-and-Delineation-Report_Part6-of-10.pdf](#)
- [Appendix-M.-Waterbody-and-Wetland-Inventory-and-Delineation-Report_Part7-of-10.pdf](#)
- [Appendix-M.-Waterbody-and-Wetland-Inventory-and-Delineation-](#)

[Report_Part8-of-10.pdf](#)

11/23/2022

- [Appendix-M.-Waterbody-and-Wetland-Inventory-and-Delineation-Report_Part9-of-10.pdf](#)
- [Appendix-M.-Waterbody-and-Wetland-Inventory-and-Delineation-Report_Part10-of-10.pdf](#)

Appendix N. Invasive Species Control Plan

[Appendix-N.-Invasive-Species-Control-Plan-1.pdf](#)

Appendix O. Cultural Resources Management Plan

[Appendix-O.-Cultural-Resources-Management-Plan_Redacted-Filing.pdf](#)

Appendix P. Corrosive Effects Study

[Appendix-P.-Corrosive-Effects-Study.pdf](#)

Appendix Q. Cable Ampacity & Thermal Calculations

[Appendix-Q.-Cable-Ampacity-and-Thermal-Calculations.pdf](#)

Appendix R. Documentation of CI Consultation Occurred

[Appendix-R.-Documentation-of-CI-Consultation-Occurred.pdf](#)

Notice of Submission of Environmental Management & Construction Plan for Champlain Hudson Power Express

- [CHPE-Segment-1-Overview-Map-for-Notices.pdf](#)
- [Final-Newspaper-Notice-for-EMCP-Segment-1.pdf](#)

© 2022 TDI CHPEXpress. A Blackstone portfolio company. All Rights Reserved.

11/23/2022

[Privacy Policy](#) | [Legal](#)