

**APPENDIX R**  
**CASE 10-T-0139**  
**DOCUMENTATION OF CI CONSULTATIONS HAVING**  
**OCCURRED**

**Champlain Hudson Power Express  
Upland Co-Located Utility Summation Matrix**

Revision Date: 02/17/2023

Segment(s)	General Location of Utility				Owner	Utility	Invert elevation (ft)	Utility Length (feet)	Utility			Comments	Quality Level (A/B/C/D)
	Station (Starting Point for Parallel and Crossing Point for Perpendicular)	Station (Ending Point for Parallel)	Starting Sheet	HDD Drawings					Offset (R/L)	Parallel/ Perpendicular	Description (optional)		
	7000+00	70029+00	C-101 to C-103		CHG&E	OH Utility (Electric)		2900.00	60' R	Parallel	Two overhead lines ~55 ft away east of tracks		B
	7000+00	70029+00	C-101 to C-103		CHG&E	OH Utility (Transmission)		2900.00	28' R	Parallel	OH Transmission lines	NC Line	B
	7000+00	70028+10	C-101 to C-103		CHG&E	UG Utility (Gas Transmission)		2810.00	45' R	Parallel	Gas Transmission Line	AH Main line, protect lines during construction	B
	70022+90				CSX RR	Storm Drainage Pipe/Culvert	113.9		86' R	Perpendicular	RCP Pipe Crossing RR Tracks	Flared end section, far from alignment	B
	70029+50		C-103		CHG&E	UG Utility (Gas)				Perpendicular	Gas Main Crossing RR Tracks just North of Browns Crossing Rd	Gas line on the south side of Browns Crossing Rd (8025A-B)	B
	70029+00		C-103		CHG&E	OH Utility (Electric)				Perpendicular	(2) Overhead distribution line on North side of Browns Crossing Rd		B
	70030+84	70037+72			CSX RR	UG Utility (Electric)		688.54	45'	Parallel	Underground electric line for railroad infrastructure		B
	70057+00				MCI	UG Utility (Fiber)				Perpendicular	MCI line on the east side of CSX RR tracks	Crossing angle is >45d, at HDD crossing	B
	70059+49		C-105	C-313	CHG&E	OH Utility (Electric)				Perpendicular	OH distribution line on North side of SR-23		B
	70060+95		C-105	C-313	CHG&E	UG Utility (Electric)				Perpendicular	UG line and manhole	In the middle of an HDD work area, relocation might be needed	B
	70063+37		C-105.1		CHG&E	OH Utility (Electric)				Perpendicular	OH Distribution line		B
	70067+42		C-105.1		CHG&E	UG Utility (Gas Transmission)				Perpendicular	Gas Transmission Line	Gas line (8025A-B)	B
	70067+02				Town of Catskill	Sanitary Sewer	56.1			Perpendicular	Sanitary sewer line		B
	70067+14				Town of Catskill	Storm Drainage Pipe/Culvert	66.2			Perpendicular	Storm drainage pipe parallel to sanitary		B
	70067+46				Town of Catskill	Water line				Perpendicular	Water line crossing street	Size or depth unknown	B
	70067+49				Town of Catskill	Sanitary Sewer	56.4			Perpendicular	Sanitary sewer line	Unknown ending point per surveyor note	B
	70068+02				Town of Catskill	Sanitary Sewer	61.1			Perpendicular	Sanitary sewer line		B
	70068+07		C-105.1		CHG&E	OH Utility (Electric)				Perpendicular	OH Distribution line	Runs along Allen St	B
	70068+25				Town of Catskill	Storm Drainage Pipe/Culvert	59.7			Perpendicular	Storm line		B
	70068+36				Town of Catskill	Storm Drainage Pipe/Culvert	60.2			Perpendicular	Sanitary sewer line		B
	70068+57				Town of Catskill	Sanitary Sewer	56.7			Perpendicular	Sanitary sewer line		B
	70068+73				Town of Catskill	Water line				Perpendicular	Water line	Runs along Allen St	B
	70068+73	70070+71			Town of Catskill	Water line		197.76	5' L	Parallel	Water line	Runs parallel to alignment, needs protection during construction	B
	70070+71				Town of Catskill	Storm Drainage Pipe/Culvert	50.4			Perpendicular	Storm collector line or culvert	East of US-9W, at Allen St	B
	70071+59	70073+04	C-105.1 to C-106		CHG&E	OH Utility (Electric)		144.88		Parallel	Alignment Parallels overhead line	Construction to watch for Overhead lines in the limits of excavation	B
	70071+59		C-105.1		CHG&E	OH Utility (Electric)				Perpendicular	OH Distribution line, runs along US-9W, N/S		B
	70081+06	70082+50	C-106		CHG&E	OH Utility (Electric)		144.20	10' R	Parallel	OH Distribution line paralleling alignment	Construction to watch for Overhead lines in the limits of excavation	B
	70083+21		C-106		CHG&E	OH Utility (Electric)				Perpendicular	OH Distribution line runs E/W		B
	70083+30				NYS DOT	Storm Drainage Pipe/Culvert				Perpendicular	Storm line at US9W WB off-ramp to Jefferson Height Av/Main St	This line ends within 10' off CL, within Limits of Work. Construction to protect	B
	70085+65	70088+02	C-106 to C-107	C-315	CHG&E	UG Utility (Gas)		236.89	10' R	Parallel	UG gas distribution main line (3757A-F)	Not within Limits of work, until crossing. Parallels the SB US-9W on-ramp from Main St	B
	70088+22		C-107	C-315	CHG&E	UG Utility (Gas)				Perpendicular	UG gas distribution main line (3757A-F), crossing angle is about 45d	Parallel to OHE line and to the SB US-9W on-ramp from Main St	B
	70088+70		C-107	C-315	CHG&E	OH Utility (Electric)				Perpendicular	OH Distribution line, crossing angle is about 45d	Parallel to gas line and to the SB US-9W on-ramp from Main St	B
	70089+49		C-107	C-315	CHG&E	UG Utility (Gas)				Perpendicular	UG gas distribution main line (3757A-F)	HDD runs many feet below the gas line	B
	70090+17				Town of Catskill	Water line				Perpendicular	Water valves	Unknown geometry, HDD runs many feet below surface	D
	70090+20				Verizon	UG Utility (Fiber)				Perpendicular	Fiber manholes in the vicinity	Unknown geometry, HDD runs many feet below surface	D
	70097+40				Town of Catskill	Storm Drainage Pipe/Culvert				Perpendicular	Catch basin, might run E/W on the N side of Bushnell Ave	Unknown geometry, HDD runs many feet below surface	D
	70097+53				Town of Catskill	Water line				Perpendicular	Water line and valves, unknown geometry	Unknown geometry, HDD runs many feet below surface	D
	70097+60		C-107	C-315	CHG&E	OH Utility (Electric)				Perpendicular	OH Distribution line, crossing angle is about 45d		B
	70097+67		C-107	C-315	CHG&E	UG Utility (Gas)				Perpendicular	UG gas distribution main line	Unknown elevation, HDD runs many feet below surface	B

**Champlain Hudson Power Express  
Upland Co-Located Utility Summation Matrix**

Revision Date: 02/17/2023

Segment(s)	General Location of Utility				Owner	Utility	Invert elevation (ft)	Utility Length (feet)	Utility			Comments	Quality Level (A/B/C/D)
	Station (Starting Point for Parallel and Crossing Point for Perpendicular)	Station (Ending Point for Parallel)	Starting Sheet	HDD Drawings					Offset (R/L)	Parallel/ Perpendicular	Description (optional)		
	70099+79		C-107		Town of Catskill	Water line				Perpendicular	Water line running on the N Side of Main St		B
	70099+83		C-107		Town of Catskill	Sanitary Sewer				Perpendicular	Sanitary line running in the N side of Main St		B
	70100+20		C-107		CHG&E	OH Utility (Electric)				Perpendicular	OH Electric on the south side of Main St		B
	70101+65		C-107.01		Town of Catskill	Storm Sewer				Perpendicular	HDPE Storm Sewer Crossing in Willow Ln	Needs mapping since it is out of the Limits of work	D
	70101+66		C-107.01		Town of Catskill	Water Line				Perpendicular	Water line in Willow Ln	Needs mapping since it is out of the Limits of work	D
	70101+67		C-107.01		CHG&E	UG Utility (Gas)				Perpendicular	UG gas distribution main line		B
	70101+90		C-107.01		CHG&E	OH Utility (Electric)				Perpendicular	OH Electric line running on the south side of Willow Ln (E/W)		B
	70102+99		C-107.01		CHG&E	UG Utility (Gas Transmission)				Perpendicular	Gas Transmission Line South of Willow Ln, line runs NW/SE		B
	70104+00	70111+00	C-107.01		MCI	UG Utility (Fiber)		700.00		Parallel	Fiber line within limits of work	Splice Vault 233 is within 10' of the fiber, and the HDD crosses under	B
	70109+72		C-107.01		Town of Catskill	Water Line				Perpendicular	Crossing RR tracks along North side of Newberry St		B
	70109+73	70109+93	C-107.01		CSX RR	Storm Drainage Pipe/Culvert	97.0	20.00	60' L	Parallel	Storm Drainage pipe parallel on normal direction within 4' from CL to CL @ Depot St/Newberry	In conflict with alignment	B
	70110+12		C-107.01		CHG&E	OH Utility (Electric)				Perpendicular	Secondary (1 line). Crosses RR tracks S of Newberry St		D
	70111+08		C-107.01		CHG&E	OH Utility (Electric)				Perpendicular	OH Distribution line crossing RR track and paralleling alignment		B
	70111+08	70115+00	C-107.01 to C-108		CHG&E	UG Utility (Electric)		391.65	~10' R	Parallel	UG electric line with fiber, within limits of work	Might need relocation during construction, likely belongs to CSX RR	B
	70120+00		C-108	C-317	CHG&E	OH Utility (Electric)				Perpendicular	Pole in the middle of HDD work area	Might need relocation during construction, likely belongs to CSX RR	B
	70124+00	70126+33	C-108 to C-109		CHG&E	OH Utility (Electric)		233.00	10' R	Parallel	OH Utility paralleling		D
	70133+75				CSX RR	Storm Drainage Pipe/Culvert	98.5		40' R	Perpendicular	PVC Alignment is South of Culvert		B
	70134+50	70138+00	C-109 to C-110		CHG&E	UG Utility (Electric)		350.00		Parallel	UG electric line from pole at Cauterskill Ave to Nussbickel Bros. property	Might need relocation during construction, likely belongs to Nussbickle Bros	B
	70135+77		C-110		CHG&E	UG Utility (Electric)				Perpendicular	UG electric line		B
	70138+20		C-110	C-318	CHG&E	OH Utility (Electric)				Perpendicular	OH Utility crossing CSX RR along Cauterskill Ave E/W	Crossing over HDD	B
	70140+25				Town of Catskill	Storm Drainage Pipe/Culvert				Perpendicular	4" HDPE Sewer Line in 8" HDPE Casing Crossing RR Tracks at Cauterskill Ave	Might be private property from Hess Retail stores or CSX RR	B
	70143+93	70147+47			Town of Catskill	Water Line		353.90		Parallel	Water Line, crosses CL @ STA 7014350	As-builts needed. Lines are missing on plans and need the information of the line along US-9W. Assumptions were made based on water valves located using Photogrammetry	D
	70144+11				Town of Catskill	Sanitary Sewer				Perpendicular	Sanitary and Drainage	A survey is needed. Lines are missing on plans and need the information of the line along US-9W. Assumptions were made based on manholes located using Photogrammetry	D
	70144+25	70145+27	C-110	C-318	CHG&E	UG Utility (Gas)		102.00		Parallel	Gas Distribution line along South side of Route 9W. Crosses alignment	Under HDD	B
	70144+27		C-110	C-318	CHG&E	OH Utility (Electric)				Perpendicular	~4 OH electric lines		B
	70144+63		C-110	C-318	CHG&E	OH Utility (Electric)				Perpendicular	~4 OH electric lines		B
	70144+63				Time Warner	OH Utility (Fiber)				Perpendicular	1 of 3 comm lines at electric pole		B
	70144+63				Mid Hudson Cablevisio	OH Utility (Telephone)				Perpendicular	1 of 3 comm lines at electric pole		B
	70144+63				Verizon	OH Utility (Telephone)				Perpendicular	1 of 3 comm lines at electric pole		B
	70144+63				NYSDOT	UG Utility (Electric)				Perpendicular	(3) UG empty lines, attached to the bridge	Per locators these lines are attached to the bridge, and run empty	B
	70146+50		C-110		CHG&E	OH Utility (Electric)			10' L	Perpendicular	OH line at pole, in conflict with CL, O/S 10' L		B
	70147+63	70148+70	C-110		CHG&E	OH Utility (Electric)		106.77		Parallel	OH Electric line, the Pole is above the CL, runs NE/SW along CSX RR		B
	70148+70		C-110		CHG&E	OH Utility (Electric)				Perpendicular	OH Electric line, the pole is within 8' off CL		B
	70148+70	70316+00			MCI	UG Utility (Fiber)		16730.00	~50' R	Parallel	F/O along East side of RR Tracks	No important interactions overall. Construction to protect	B
	70154+00		C-111		CHG&E	OH Utility (Electric)				Perpendicular	OH electric line crossing about 45d		B
	70165+90				CSX RR	Storm Drainage Pipe/Culvert	98.0		52' R	Perpendicular	Concrete Arch Crossing RR Tracks		B
	70176+25				CSX RR	Storm Drainage Pipe/Culvert	86.3		34' R	Perpendicular	(2) 30" CMP culverts. 26' O/S from CL to FES	In the limits of work, construction to protect	B
	70183+00				CSX RR	Storm Drainage Pipe/Culvert	102.3		62' R	Perpendicular	Concrete Box Crossing RR Tracks	Alignment is East of Culvert	B
	70206+20	70207+20			CSX RR	UG Utility (Electric)		100.00	22' R	Parallel	RR Electric Boxes and Controls, O/S 20' from CL	Protect during construction	B

**Champlain Hudson Power Express  
Upland Co-Located Utility Summation Matrix**

Revision Date: 02/17/2023

Segment(s)	General Location of Utility				Owner	Utility	Invert elevation (ft)	Utility Length (feet)	Utility			Comments	Quality Level (A/B/C/D)
	Station (Starting Point for Parallel and Crossing Point for Perpendicular)	Station (Ending Point for Parallel)	Starting Sheet	HDD Drawings					Offset (R/L)	Parallel/ Perpendicular	Description (optional)		
	70213+51				CSX RR	Storm Drainage Pipe/Culvert	116.9		23' R	Perpendicular	CMP Culvert crossing RR Tracks, FES is O/S 23' off CL	Protect during construction	B
	70219+75				CSX RR	Storm Drainage Pipe/Culvert	115.5		24' R	Perpendicular	CMP Culvert crossing RR Tracks		B
	70223+90				CSX RR	Storm Drainage Pipe/Culvert	115.3		37' R	Perpendicular	CMP Culvert crossing RR Tracks		B
	70225+02				CSX RR	Storm Drainage Pipe/Culvert	99.2		40' R	Perpendicular	CMP Culvert		B
	70225+25				CSX RR	Storm Drainage Pipe/Culvert	92.5		40' R	Perpendicular	CMP Culvert		B
	70225+60				CSX RR	Storm Drainage Pipe/Culvert	88.1		40' R	Perpendicular	CMP Culvert		B
	70226+00				CSX RR	Storm Drainage Pipe/Culvert	84.8		40' R	Perpendicular	CMP Culvert		B
	70228+60				CSX RR	Storm Drainage Pipe/Culvert	105.4		17' R	Perpendicular	CMP Culvert		B
	70231+50				CSX RR	Storm Drainage Pipe/Culvert	104.7		17' R	Perpendicular	CMP Culvert		B
	70246+15				CSX RR	Storm Drainage Pipe/Culvert	106.8		30' R	Perpendicular	CMP Culvert crossing RR Tracks, O/S 33' R	Protect during construction	B
	70255+90				CSX RR	Storm Drainage Pipe/Culvert	101.8		42' R	Perpendicular	CMP Culvert crossing RR , O/S 42' R	Alignment to East of Culvert	B
	70261+40				CSX RR	Storm Drainage Pipe/Culvert	104.3		43' R	Perpendicular	CMP Culvert crossing RR Tracks, O/S 43' R	Alignment to East of Culvert	B
	70267+10				CSX RR	UG Utility (Fiber)				Perpendicular	Fiber Optic? At Holcim Soccer Fields, CSX RR MP 107	Further investigation is needed. This line is in the middle of nowhere, crossing the RR Tracks, and to check if it crosses the proposed alignment.	B
	70276+50		C-119		CHG&E	OH Utility (Electric)				Perpendicular	OH Electric line, the pole is within 14' (R) off CL, line x-ing @ STA 70277+00. North of Embought Rd		B
	70276+97	70277+39			CSX RR	Storm Drainage Pipe/Culvert	107.0	41.97		Parallel	HDPE Culvert Crossing Embought RD East of RR Tracks, O/S from CL is 6.4' R	Access Road - Protect in Place	B
	70277+78		C-119		CHG&E	OH Utility (Electric)				Perpendicular	OH Telephone line, the pole is in conflict with a distance (O/S) of ~5' L to CL		B
	70279+40				CSX RR	Storm Drainage Pipe/Culvert	86.7			Perpendicular	RCP Culvert crossing RR Tracks, FES is O/S 9.78' R off CL	Conflict with end of culvert	B
	70279+40	70310+00			Private	OH Utility (Telephone)		3060.00		Parallel	OH Electric & Phone		B
	70289+50				CSX RR	UG Utility (Telephone)				Perpendicular	Pole shows a line	Need confirmation of the pole within 10' off CL	B
	70297+25	70297+50			CSX RR	Storm Drainage Pipe/Culvert	110.00	25.00		Parallel	HDPE Culvert for Access to RR Controls	Alignment East of Culvert	B
	70297+40				CSX RR	UG Utility (Electric)				Perpendicular	CSX RR Electrical and Controls	Directly adjacent to Access Road	B
	70331+00	70331+80			Private	OH Utility (Electric)		80.00		Parallel	Electric pole is O/S 11' L from CL, two crossings		B
	70332+85				Private	OH Utility (Electric)				Perpendicular	OH line crosses over conveyor		B
	70332+90				Private	Conveyor				Perpendicular	Underground Conveyor	Confirm Crossing Requirements/Standards.	B
	70334+00				Private	Storm Drainage Pipe/Culvert				Perpendicular	CMP Culvert crossing RR Tracks		B
	70335+50				Private	OH Utility (Electric)				Perpendicular	OH Electric		B
	70354+35				CSX RR	Storm Drainage Pipe/Culvert	87.6		26' R	Perpendicular	CMP Culvert crossing RR Tracks, crosses alignment	In conflict with alignment	B
	70392+60				Private	Storm Drainage Pipe/Culvert	81.6			Perpendicular	RCP Culvert on service road	In conflict with the alignment, need to protect	B
	70392+40		C-127		CHG&E	OH Utility (Electric)				Perpendicular	Electric line crossing the alignment		B
	70393+25	70406+15	C-127 to C-128		CHG&E	OH Utility (Electric)		1290.00		Parallel	OH Distribution line		B
	70400+65				NYS DOT	Storm Drainage Pipe/Culvert	74.4			Perpendicular	HDPE Culvert crossing Route 9W	Alignment is East of Culvert, 35' O/S from CL	B
	70404+02				Time Warner	OH Utility (Fiber)				Perpendicular	Fiber & Electric over alignment		B
	70404+02	70415+00	C-127 to C-128		CHG&E	OH Utility (Electric)		1098.00		Parallel	Electric line paralleling alignment		B
	70404+02	70415+00			Verizon	OH Utility (Telephone)		1098.00		Parallel	Fiber & Electric paralleling		D
	70406+00				NYS DOT	Storm Drainage Pipe/Culvert	72.2		49' R	Perpendicular	CMP Culvert crssing Route 9W	No terminus found on west side, need protection / relocation	B
	70415+10				NYS DOT	Storm Drainage Pipe/Culvert	86.5		32' R	Perpendicular	CMP Culvert crssing Route 9W. FES is off 37' from CL		B
	70419+92	70452+00	C-128 to C-131		CHG&E	OH Utility (Electric)		3207.81		Parallel	OH Electric and Telephone lines, the phone is 10' off CL, crossing at STA 70421+51	Might be private property moving forward	B
	70424+50	70425+10			Private	Storm Drainage Pipe/Culvert	60.8	60.00		Parallel	CMP Culvert for Private Access, ~8' off alignment	Need to protect structure or replace since it is inside LOW/Vault	B
	70428+20				Private	Storm Drainage Pipe/Culvert	49.8			Perpendicular	CMP Culvert crossing Alpha Blvd		B

**Champlain Hudson Power Express  
Upland Co-Located Infrastructure  
Fact Sheet**

**Project Background**

- The Champlain Hudson Power Express (CHPE) is a 339-mile underground and underwater high voltage direct current (HVDC) electric transmission line that will import up to 1,250 MW of renewable power from Canada and send it to the New York City metro area.
- Transmission Developers Inc. (TDI) is the developer of the project.
- TDI is owned by Blackstone, a company based in New York.
- The transmission line is fully permitted at the State and Federal level and has been under development for roughly 10 years.
- The upland portion of the transmission line will be located primarily within transportation corridor (railway or highway) rights-of-way.

**Construction Timing & EM&CP**

- Construction is anticipated for 2022 -2025
- A map of the Project is included as Attachment A.
- Prior to construction commencing, CHPE must file an Environmental Management & Construction Plan (EM&CP) and receive approval from the State for this segment prior to installing the transmission line cables. The EM&CP will include detailed construction means and methods, and schedule. The EM&CP will be subject to public review and your organization will have the opportunity to review it before it becomes final.

- In preparation for that filing, TDI needs to coordinate with owners co-located infrastructure (CI) along this permitted route.
- TDI would like to (1) establish a contact with someone at your company/town who is responsible for this CI; (2) understand your process for discussing utility crossings; and (3) answer questions.

### **Overview of CI crossings and CHPE construction**

- The underground portion of the buried transmission line will be installed in a trench approximately three (3) feet wide and five (5) feet deep and will require minimal or no maintenance during its 60+ year operational life (Typical trench detail - Attachment B).
- Within the trench, the cables will be installed in plastic conduit. There will also be a fiber optic cable installed within the trench.
- Proposed underground installation will be primarily in the shoulders of roadways, under the road's pavement or along the edge of the Canadian Pacific or CSX railroad rights-of-way.
- Once the cables are installed, the ground will be restored.
- Directly over the transmission lines, vegetation maintenance will be required to ensure deep rooted trees do not grow. Otherwise, no maintenance is needed.
- TDI has worked closely with the local towns, NYSDOT, and the Canadian Pacific and CSX railroads regarding CHPE, and it is coordinating the final design with them.
- Depending on the depth of the existing overland CI infrastructure, if within the 15 ft depth range, our preferred approach is to install our HVDC cables

under all buried infrastructure. TDI will accomplish that by working with the CI-owners to establish the best methodology for exposing, supporting, and performing our cable installation under the existing infrastructure. (Typical crossing under CI - Attachment C)

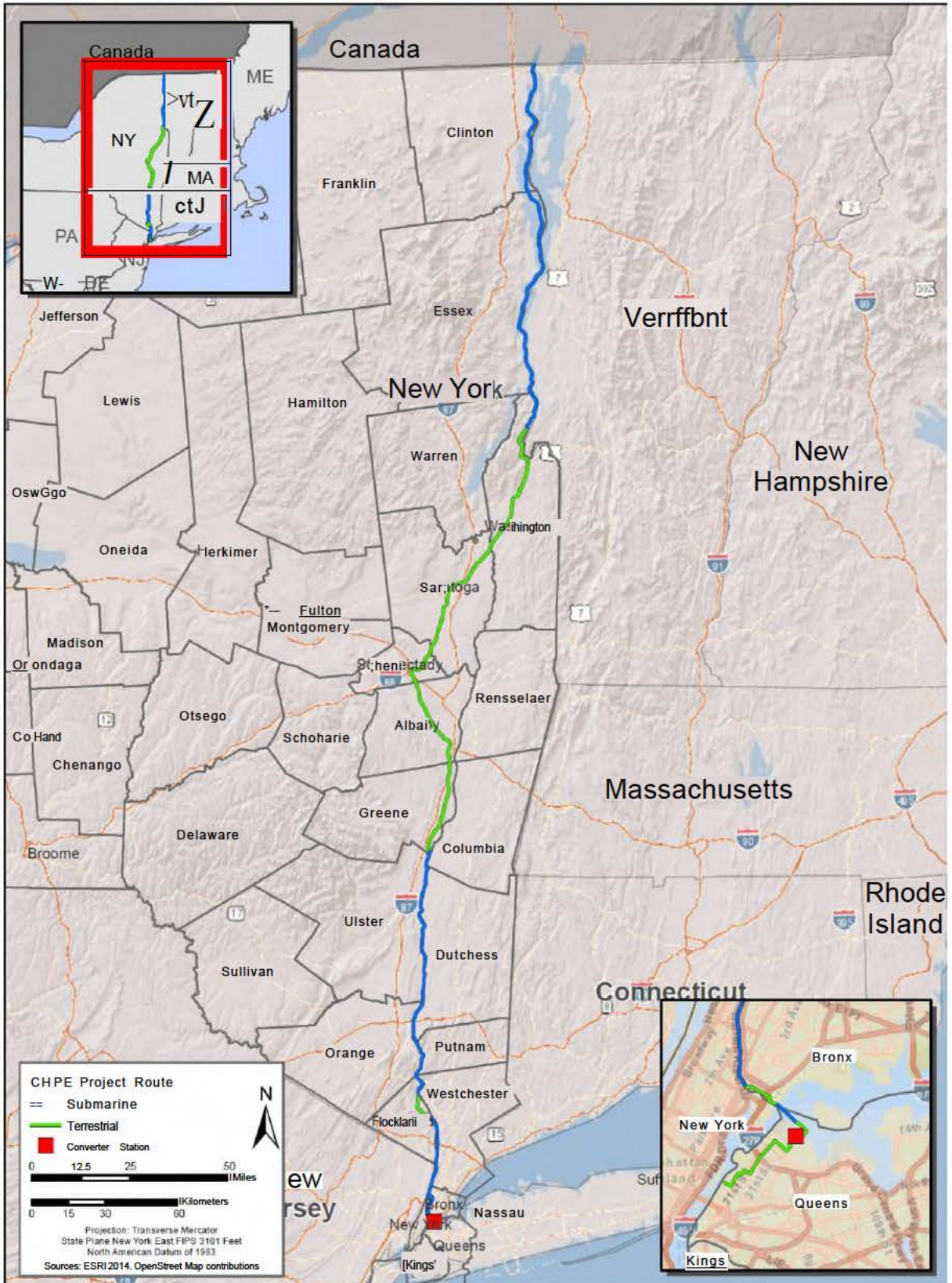
- Our proposal for crossing under CI will follow industry standard crossing methods. Adequate temporary construction supports will be provided for the exposed co-located utilities below grade.
- For deeper CI (usually greater than 15ft) or when there is significant concentration of CI infrastructure within a particular area, horizontal directional drilling (HDD) will be employed to cross under the existing utilities.
- For proposed HDDs, two bored conduits approximately separated at a minimum distance of 15 ft will be installed following the required depth to house the HVDC cables.
- In the event TDI cannot install its cable conduit under buried infrastructure, it will cross over the existing CI utilities via open trench, provided that the minimum cover of 60 inches can be provided over the proposed HVDC cables in roadway and 30 inches of cover in roadside, other vegetated areas and within railroad right-of-way per the below detail (Typical crossing over CI - Attachment D).
- In crossing the existing co-located utilities, TDI and their contractors shall also install the proposed HVDC cables with at least the minimum clearance criteria specified by each individual utility owner.
- Regarding proposed trench installation over existing large municipal storm culverts, an underground utility bridging support structure will be

constructed to allow the proposed HVDC cables to be self-supported across the span in the event the storm culverts require future repair or replacement. (Typical CI support- Attachment E.)

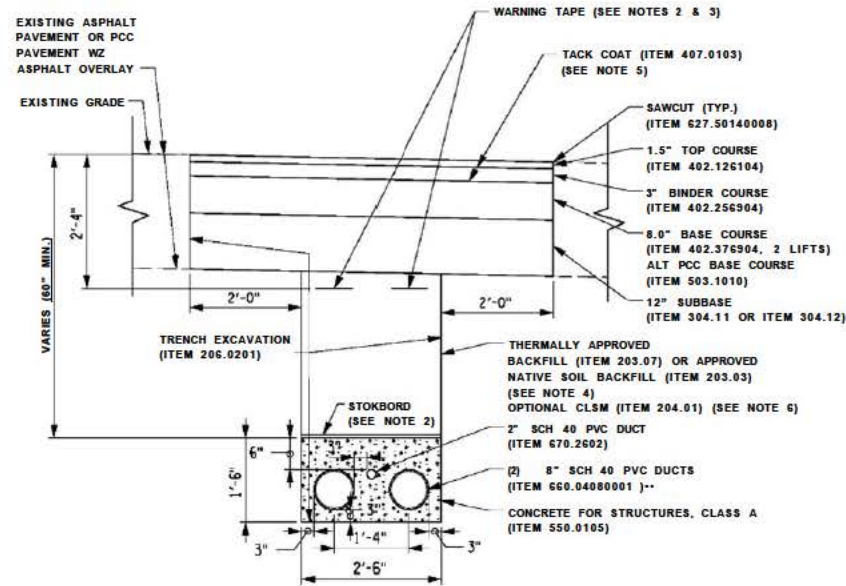
- As part of development of a crossing plan for your CI, TDI will work with the respective CI owners, to:
  - o Establish and conduct a subsurface utility survey to determine the precise location of the infrastructure within the limits of the proposed CHPE cable installation, including:
    - Depth from roadway and/or ground surface
    - Physical width and footprint occupied by the CI
    - Existence of CI supporting structures to be avoided
  - o Confirm proposed crossing installation including the requirements for CI temporary support.
  - o Eventually, based on this information, TDI will work with each CI owner to consummate a formal CI agreement as necessary.



Attachment A



Attachment B



TYPICAL FLAT CABLE ALIGNMENT IN DUCTBANK  
TRENCH CROSS SECTION (ROADWAY INSTALLATION)

SCALE: 1" = 2'

ITEM	DESCRIPTION
206.0201	EMBANKMENT IN PLACE
206.0201	SELECT GRANULAR FILL
206.0201	CONTROLLED LOW STRENGTH MATERIAL
206.0201	TRENCH AND CULVERT EXCAVATION
304.11	SUBBASE COURSE, TYPE 1
304.12	SUBBASE COURSE, TYPE 2
402.126104	12.5 FT TOP COURSE HMA, 60 SERIES COMPACTION
402.256904	25 FT BINDER COURSE HMA, 60 SERIES COMPACTION
402.376904	37.5 FT BASE COURSE HMA, 60 SERIES COMPACTION
407.0105	STRAIGHT TACK COAT
555.0105	CONCRETE FOR STRUCTURES, CLASS A
627.50140008	CUTTING PAVEMENT
660.04080001**	FURNISH AND INSTALL PVC UTILITY CONDUIT 8 INCH
670.2602	RIGID PLASTIC CONDUIT, 2"

-SPECIAL SPEC  
 \*\*SPECIAL NOTE: FOLLOW SPECIAL SPECIFICATION 660.04080001. CONDUIT SIZE, FITTINGS AND CONNECTIONS TO BE REVISED TO 8" AND SCHEDULE TO BE SCH 40.

NOTES:

1. FILL MATERIAL SHALL HAVE THERMAL RESISTIVITY OF 1.0 KmZW OR LESS.
2. FITTINGS, CONNECTIONS, WARNING TAPE, AND STOKBORD WILL BE INCLUDED UNDER ITEM 660.04080001.
3. WARNING TAPE DEPTH TO MEET THE REQUIREMENTS OF NEC SECTION 300.5(D)(3).
4. FOR INSTALLATION NOT LOCATED IN ROADWAYS, APPROVED NATIVE SOIL BACKFILL WILL EXTEND TO WITHIN FOUR (4) INCHES OF EXISTING GRADE.
5. TACK COAT SHALL BE APPLIED TO ALL EXPOSED EDGES AND BETWEEN EVERY LIFT.

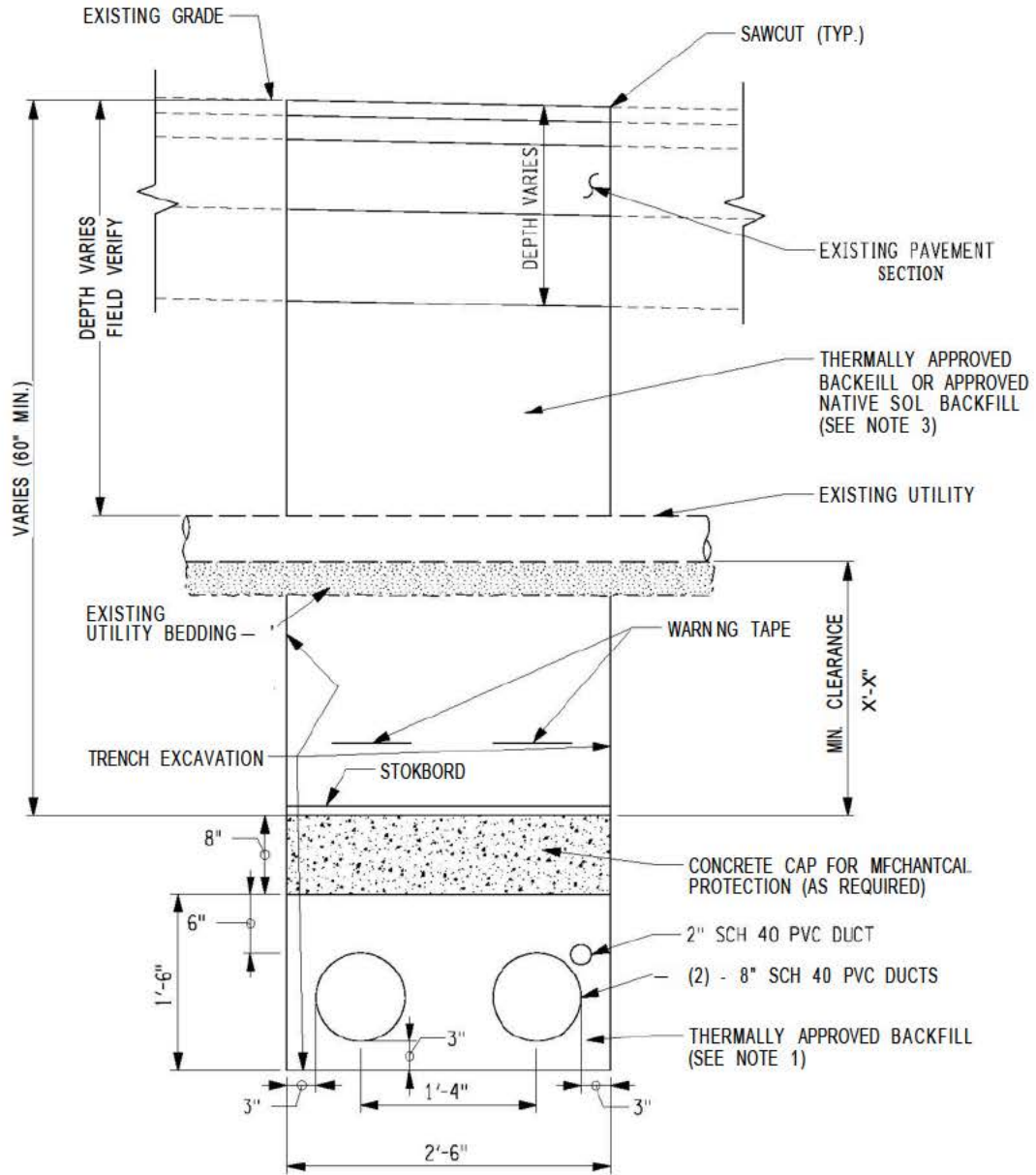
ALIGNED ON:	APPROVED ON:
SCHEDULED DATE:	SIGNATURE:

IT IS A VIOLATION OF LAW FOR ANY PERSON, UNLESS THEY ARE ACTING UNDER THE DIRECTION OF A LICENSED PROFESSIONAL ENGINEER, ARCHITECT, LANDSCAPE ARCHITECT, OR LAND SURVEYOR, TO ALTER AN ITEM IN ANY WAY. IF AN ITEM BEARING THE STAMP OF A LICENSED PROFESSIONAL IS ALTERED, THE ALTERING ENGINEER, ARCHITECT, LANDSCAPE ARCHITECT, OR LAND SURVEYOR SHALL SIGN AND DATE THE DOCUMENT AND INCLUDE THE NOTATION ALTERED BY FOLLOWED BY THEIR SIGNATURE, THE DATE OF SUCH ALTERATION, AND A SPECIFIC DESCRIPTION OF THE ALTERATION.

REVISIONS			
DATE	DESCRIPTION	BY	CHK

TOUOKSIOHOCVELOHKS.HC. 1301 AVENUE OF THE AMERICAS NEW YORK, NY 10019 6022	TITLE OF PROJECT CLAMPAIN HUDSONPOTER EXPRESS	CONTRACT NUMBER: 60323056
A=COM	LOCATION OF PROJECT	DATE: 03/04/2001
	TYPE OF CONTRACT	DRAWING NUMBER:
TYPICAL TRENCH CROSS SECTION WITH PVC CONDUIT IN DXTBAM		

Attachment C



**TYPICAL UTILITY CROSSING DETAIL**

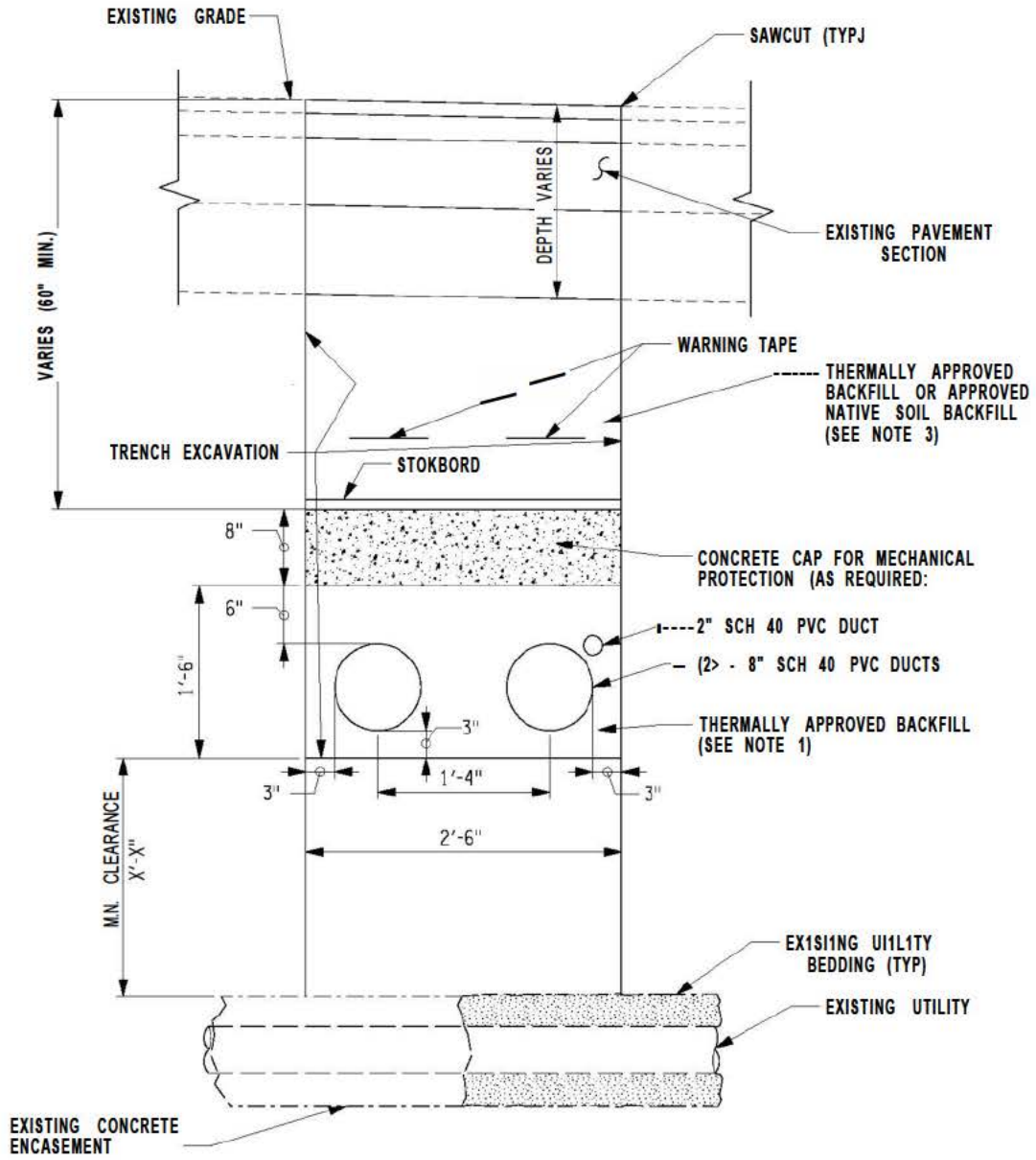
NOTES:

NOT TO SCALE

1. FILL MATERIAL SHALL HAVE THERMAL RESISTIVITY OF 1.0 K\*m/W OR LESS.
2. WARNING TAPE DEPTH TO MEET THE REQUIREMENTS OF NEC SECTION 300.5(D)(3).
3. FOR INSTALLATION NOT LOCATED IN ROADWAYS, APPROVED NATIVE SOL BACKFILL WILL EXTEND TO WITHIN FOUR M) NCHES OF EXISTING GRADE.

CHAMPLAIN HUDSON POWER EXPRESS TRANSMISSION DEVELOPERS, INC.  <b>A&amp;COM</b>	PRWEC TITLE	LOCATIONS	
	DRAWING TITLE	DATE:	07/07/2020
	TYPICAL UTILITY CROSSING DETAIL	CPAWNCHUMBER	FIG XX

Attachment D



**TYPICAL UTILITY CROSSING OVER DETAIL**

**NOTES:**

NOT TO SCALE

1. FILL MATERIAL SHALL HAVE THERMAL RESISTIVITY OF 1.0 K'm/W OR LESS.
2. WARNING TAPE DEPTH TO MEET THE REQUIREMENTS OF NFC SECTION 300.5(D)(3).
3. FOR INSTALLATION NOT LOCATED IN ROADWAYS, APPROVED NATIVE SOIL BACKFILL WILL EXTEND TO WITHIN FOUR (4) INCHES OF EXISTING GRADE.

DESIGN SUPERVISOR: \_\_\_\_\_ CHECKED BY: \_\_\_\_\_ DRAFTED BY: \_\_\_\_\_

CHAMPLAIN HUDSON POWER EXPRESS TRANSMISSION DEVELOPERS, INC.		FIG./CT/TITLE LOCATIONS
<b>ASCOM</b>		DRAWING TITLE TYPICAL UTILITY CROSSING OVER DETAIL
		DATE: 07/07/2020
		DRAWING NUMBER: FIG XX

# Attachment E

**AZCOM**

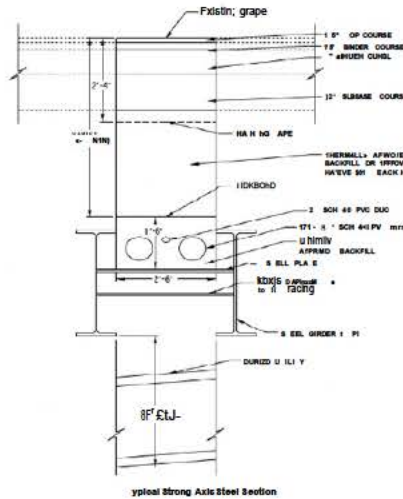
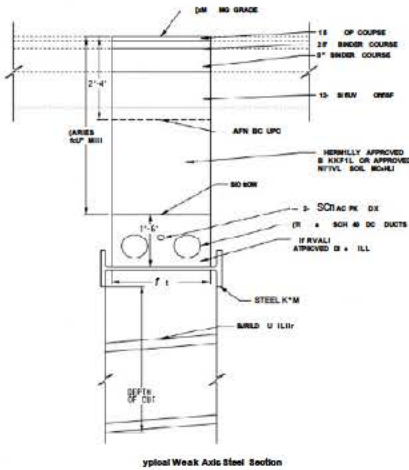
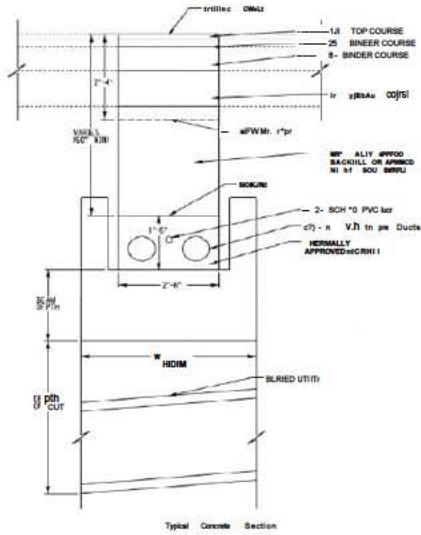
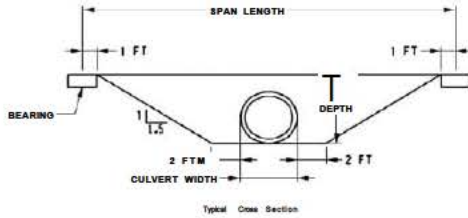
AECUM U.S.A., I.X.  
 0 British American Bld.  
 Latham, NY 12110

PROJECT NO. 000000  
 Prepared By: IMP Date: 12/1/2001  
 Reviewed By: MWD Date: 12/1/2001  
 Approved By: \_\_\_\_\_ Date: \_\_\_\_\_

**CALCULATION SHEET**

Client: TDI Subject: Underground L.L. Utility Support

Project: CHPE  
 Description: Preliminary Review of Utility Support Options over culvert replacement  
 Details:



Support Sizes

Culvert Width (ft)	Depth of Cut (ft)																			
	5	6	7	8	9	10	11	12	13	14	15	16	17	18	19	20				
1.30	1-A	2-A	3-C	-D	5-E	5	5	5	5	5	5	5	5	5	5	5				
1.65	1-A	2-A	3-C	-D	5-E	5	5	5	5	5	5	5	5	5	5	5				
1.92	1-A	2-A	3-C	-D	5-E	5	5	5	5	5	5	5	5	5	5	5				
2.50	1-A	2-A	3-C	-D	5-E	5	5	5	5	5	5	5	5	5	5	5				
3.08	1-A	2-A	3-C	-D	5-E	5	5	5	5	5	5	5	5	5	5	5				
3.67	1-A	2-A	3-C	-D	5-E	5	5	5	5	5	5	5	5	5	5	5				
4.25	1-A	2-A	3-C	-D	5-E	5	5	5	5	5	5	5	5	5	5	5				
5.00	2-A	3-C	-D	5-F	5	5	5	5	5	5	5	5	5	5	5	5				

Type	Steel Beam Size
1	W26X231 Weak Axis Support
2	W26X27 Weak Axis Support
3	W26X330 Weak Axis Support
4	W26X365 Weak Axis Support
5	21W36X135 - Strong Axis Support
6	21W36X231 - Strong Axis Support

Type	Concrete Beam Width	Beam Depth
A	52	28
B	52	20
C	52	2
D	52	30
E	7	36

1

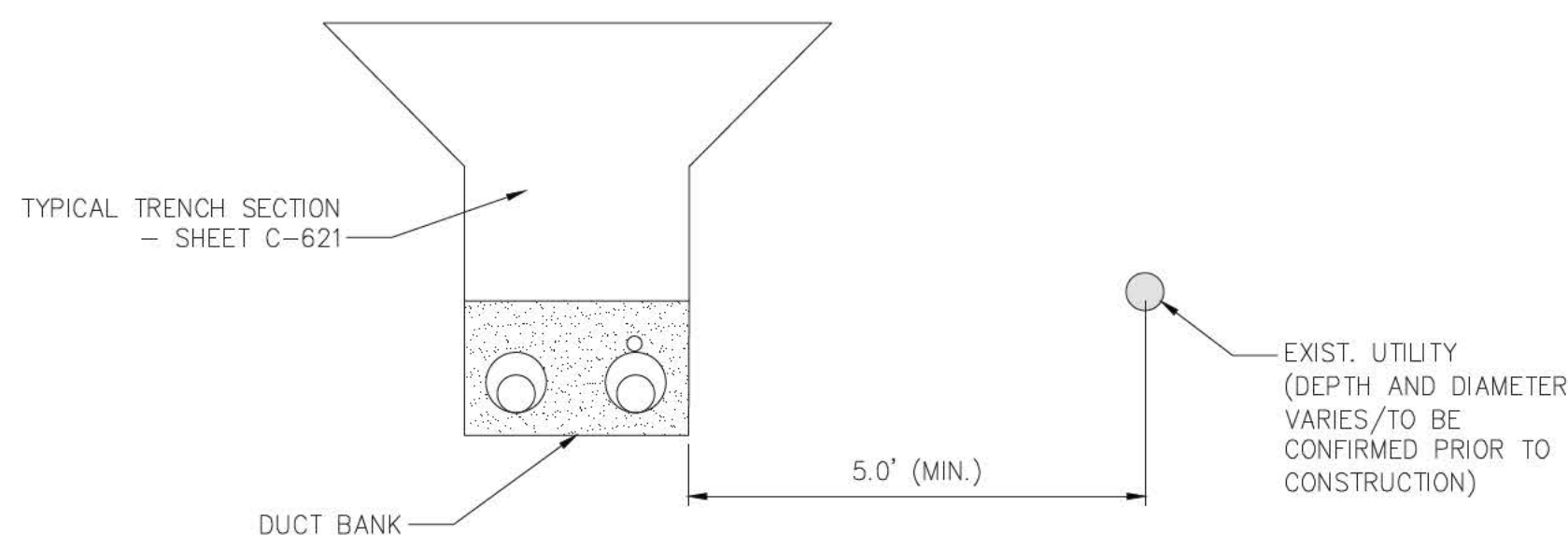
2

3

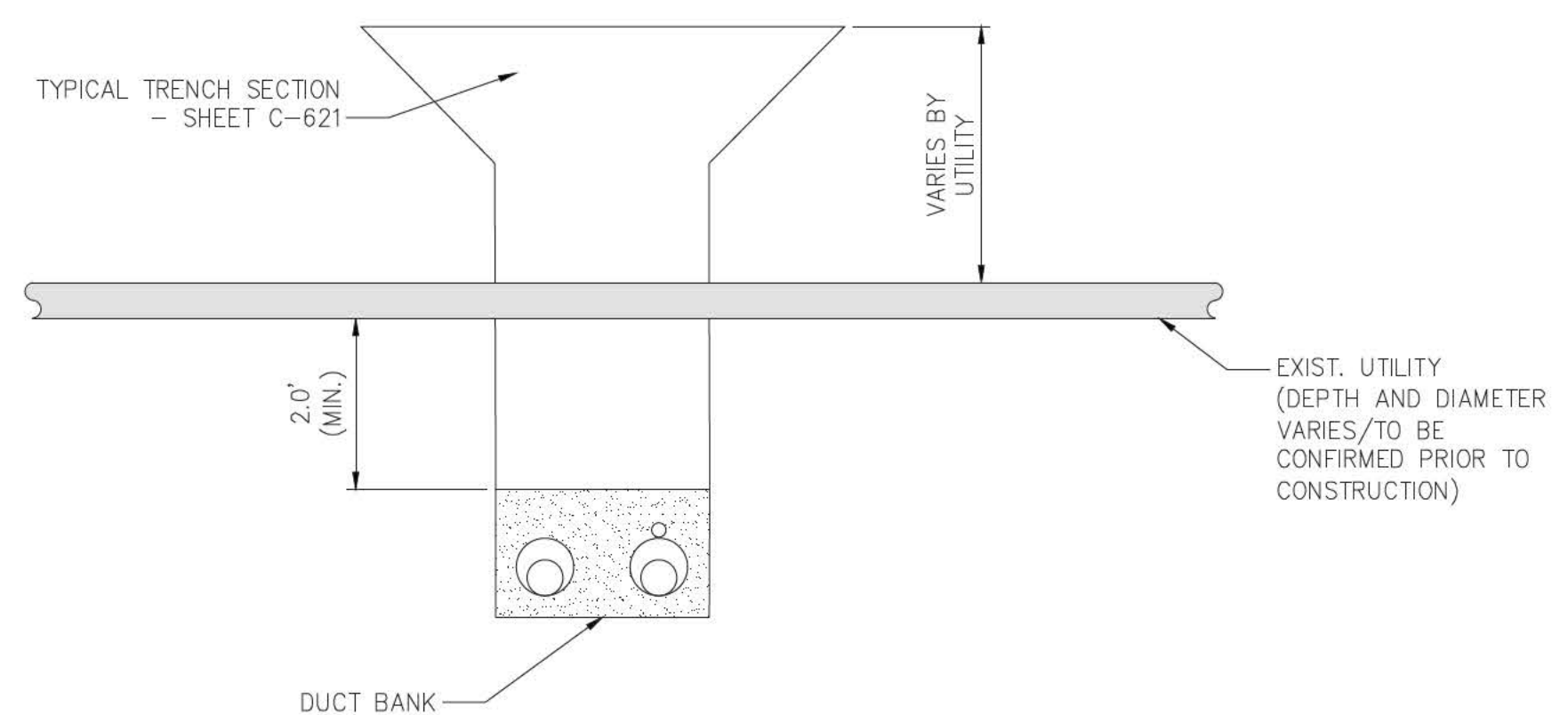
4

A

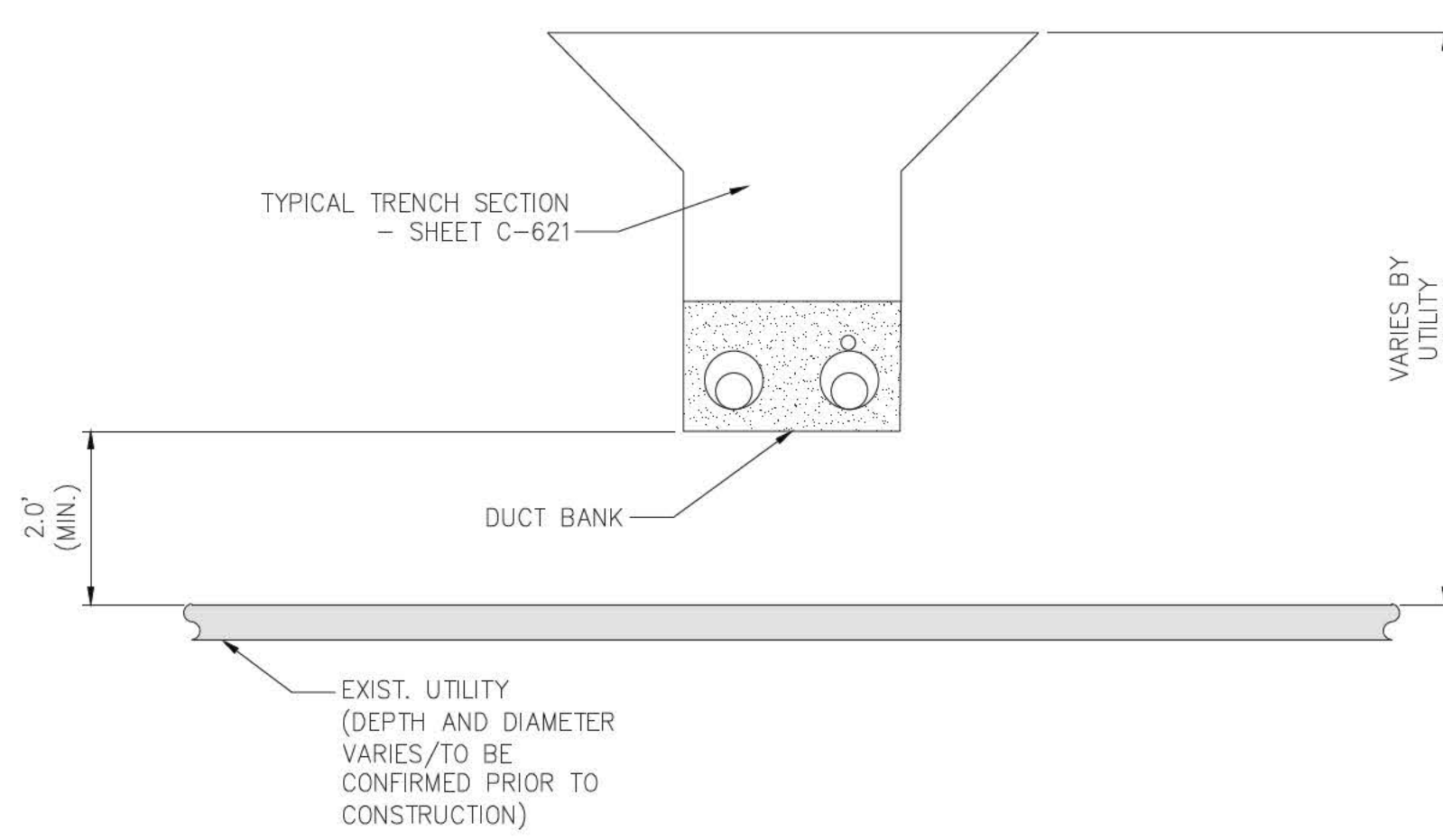
B



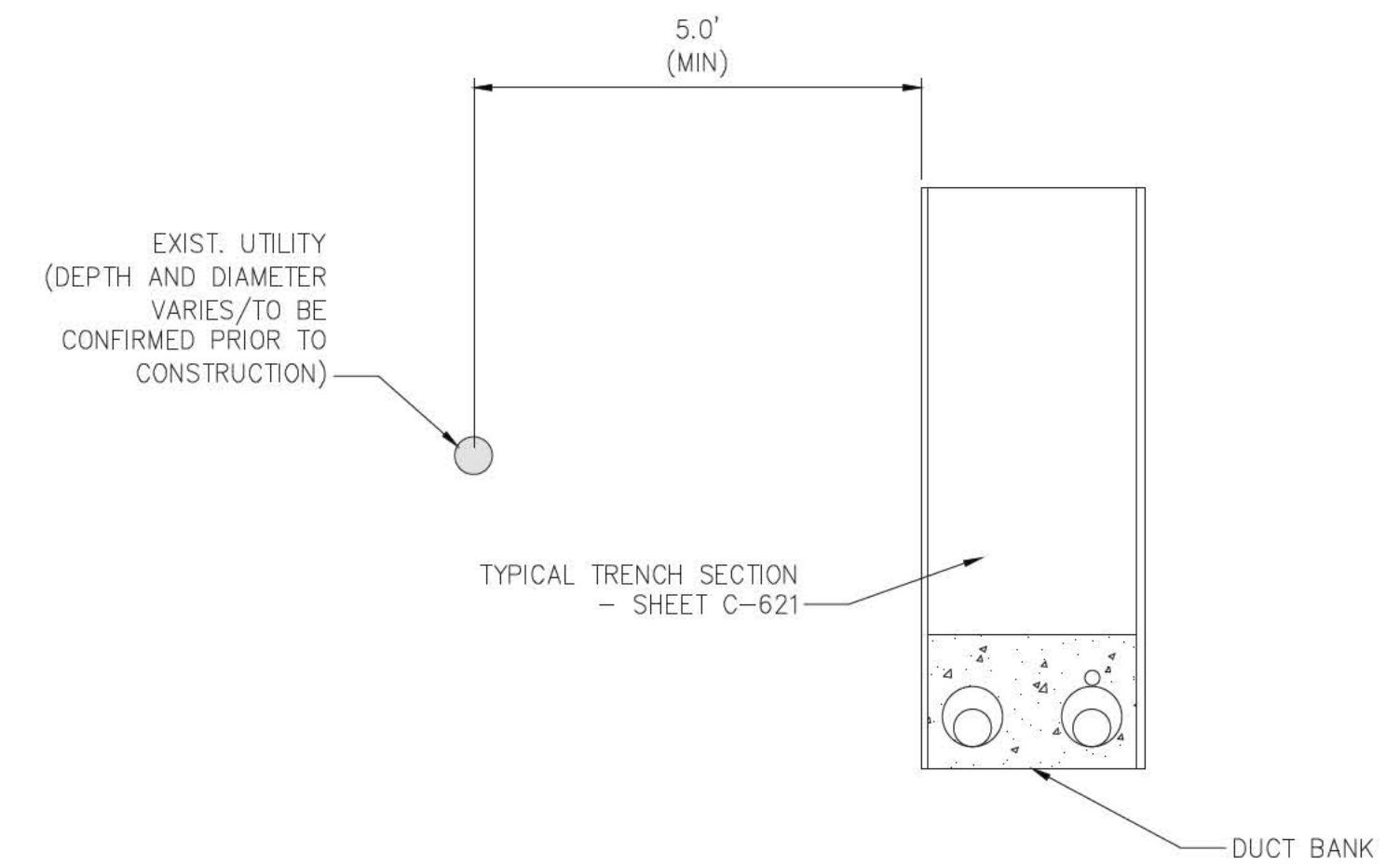
1 OPEN TRENCH - HORIZONTAL SEPARATION  
NOT TO SCALE



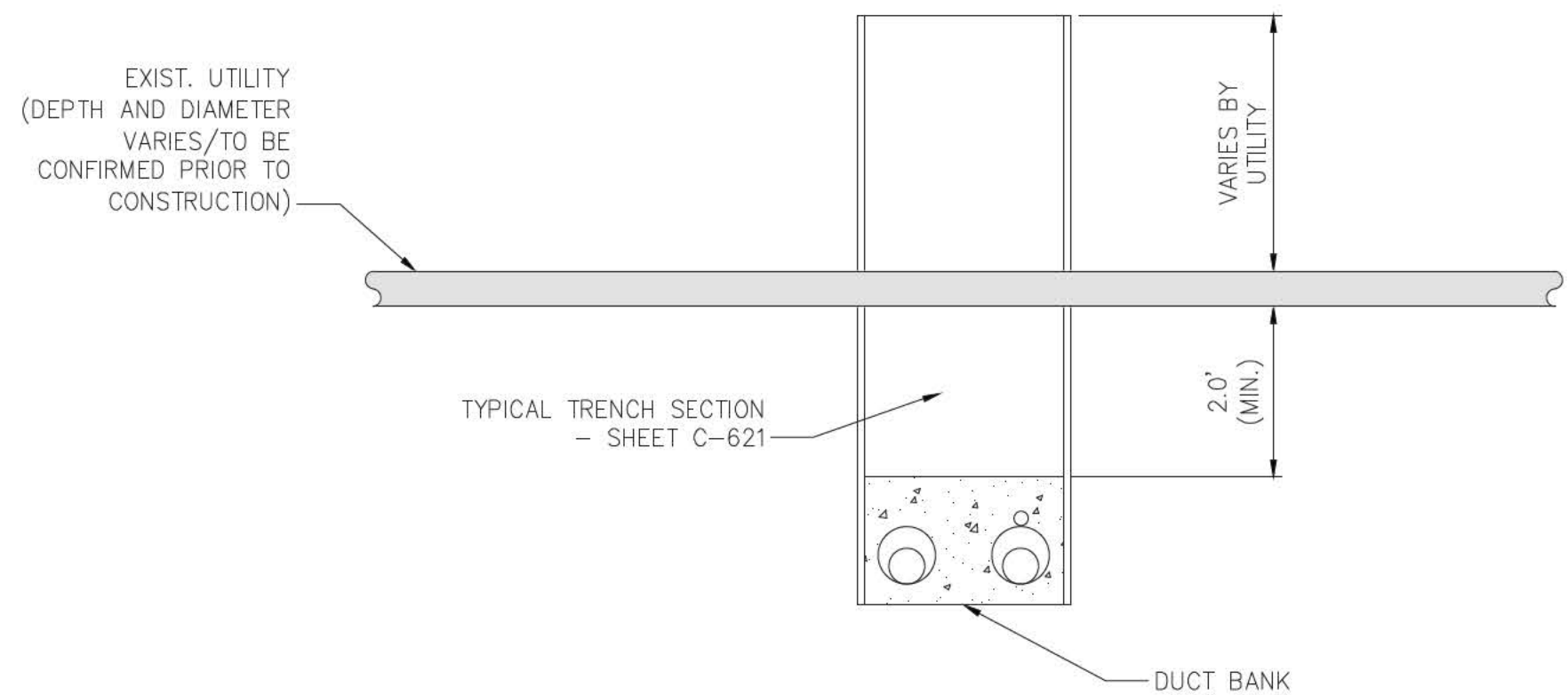
3 OPEN TRENCH - VERTICAL SEPARATION (UNDER)  
NOT TO SCALE



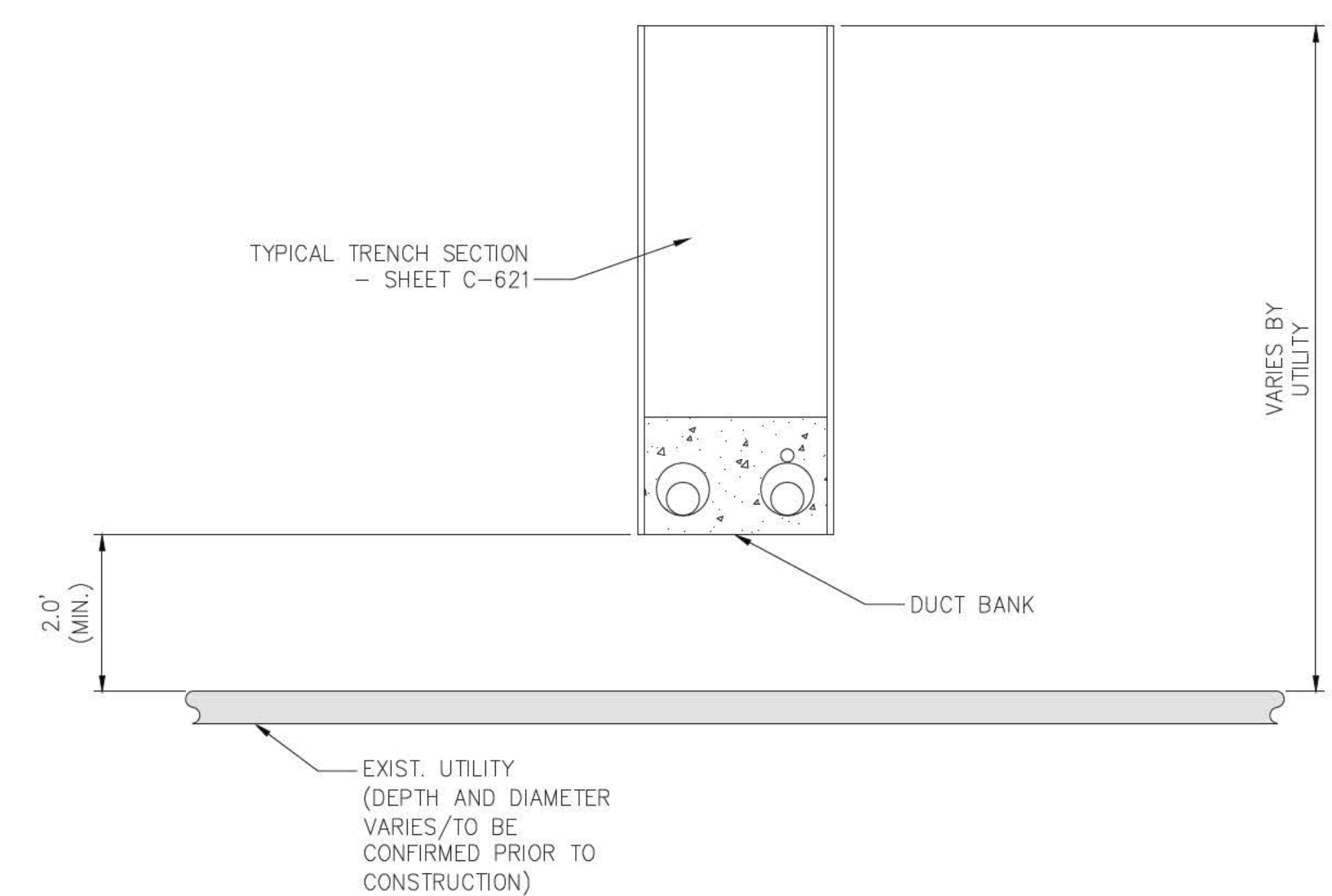
5 OPEN TRENCH - VERTICAL SEPARATION (OVER)  
NOT TO SCALE



2 TYPICAL DUCTBANK IN ROADWAY - HORIZONTAL SEPARATION  
NOT TO SCALE



4 TYPICAL DUCTBANK IN ROADWAY - VERTICAL SEPARATION (UNDER)  
NOT TO SCALE



6 TYPICAL DUCTBANK IN ROADWAY - VERTICAL SEPARATION (OVER)  
NOT TO SCALE



TETRA TECH ENGINEERING AND SURVEYING P.C.  
(A NEW YORK PROFESSIONAL CORPORATION)

CHPE ID/CR	Rev	Date	Comments

IT IS A VIOLATION OF LAW FOR ANY PERSON, UNLESS THEY ARE ACTING UNDER THE DIRECTION OF A LICENSED PROFESSIONAL ENGINEER, ARCHITECT, LANDSCAPE ARCHITECT OR LAND SURVEYOR TO ALTER AN ITEM IN ANY WAY, IF AN ITEM BEARING THE STAMP OF A LICENSED PROFESSIONAL IS ALTERED, THE ALTERING ENGINEER, ARCHITECT, LANDSCAPE ARCHITECT OR LAND SURVEYOR SHALL STAMP THE DOCUMENT AND INCLUDE THE NOTATION "ALTERED BY" FOLLOWED BY THEIR SIGNATURE, THE DATE OF SUCH ALTERATION, AND A SPECIFIC DESCRIPTION OF THE ALTERATION.

No.	DATE	SUBMITTAL / REVISION DESCRIPTION	DB	APP
H	12/01/2022	DRAFT FINAL	RB	EK
G	11/16/2022	ISSUED FOR DRAFT FINAL	RB	EK
F	07/22/2022	ISSUED FOR FINAL REVIEW	RB	EK
E	06/09/2022	ISSUED FOR FINAL REVIEW	RB	EK
D	05/19/2022	ISSUED FOR INTERIM REVIEW	RB	RB
C	03/22/2022	PRELIMINARY DESIGN DEVELOPMENT	BV	TK
B	03/04/2022	PRELIMINARY DESIGN DEVELOPMENT IDR-CR	BV	TK
A	02/14/2022	PRELIMINARY PROGRESS	BV	TK

CHAMPLAIN HUDSON POWER EXPRESS  
SEGMENT 11 (PACKAGE 7A) - CSX: CATSKILL  
UTILITY TYPICAL  
SEPARATION DETAILS

KIEWIT PROJECT NO.	21162
TT PROJECT NO.	204-3701
DRAWING NO.	C-901

DRAWN BY: wso DESIGNED BY: wso APPROVED BY: SCALE AS NOTED DATE 02/14/2022  
REV. NO. H SH. NO. XXX OF 66

File: C:\P\WORK\KING\REV\1\DM551141\21162\_7A\_C-901.DWG Saved: 11/21/2022 4:19:08 PM Plotted: 11/21/2022 4:19:26 PM Current User: Wogar, Mike Last Saved By: Mike Wogar

## Laurie Reynolds

---

**From:** Ben.Cole-PTR <[REDACTED]>  
**Sent:** Wednesday, November 2, 2022 3:52 PM  
**To:** Hill, Nathaniel RT (Nate)  
**Subject:** [EXTERNAL] CHPE Collocated Infrastructure Details\_EM&CP 4B and 7A\_Verizon

**Follow Up Flag:** Follow up  
**Flag Status:** Flagged

Hi Nate,

As you know, I'm writing on behalf of Transmission Developers Inc. ("TDI"), owner of the Champlain Hudson Power Express ("CHPE" or "Project") transmission line project. The purpose of this correspondence is to provide more detailed information related to how the CHPE project is designed to interact with your infrastructure and to solicit feedback from your company regarding the Project's alignment.

The CHPE is a fully permitted 339-mile underground and underwater high voltage direct current (HVDC) electric transmission line that will import up to 1,250 MW of renewable power from Canada and send it to the New York City metro area (see <https://chpexpress.com> for additional information).

At the links below please find design drawings of the proposed CHPE alignment where it involves your infrastructure within the Environmental Management and Construction Plan ("EM&CP") Packages 4B (Schenectady area) and 7A (Catskill area).

Links:

[Package 4B Verizon Co-Located Infrastructure Package 2022-10-31.pdf](#)  
[Package 7A Verizon Co-Located Infrastructure Package 2022-10-31.pdf](#)

TDI will be submitting these plans to the New York State Public Service Commission ("PSC") for portions of the Project in your area. This information is a follow-up to previous communications to you providing general project information and typical infrastructure crossing drawings.

Please review the linked information regarding the CHPE alignment relating to your infrastructure and provide concurrence with the Project's cable separation and alignment and any feedback to me ([REDACTED]). It is important to TDI that the construction and operation of the CHPE project does not interfere with the continued operation of your infrastructure.

To the extent that the CHPE alignment interacts with your infrastructure within future Segment EM&CP submissions, we will provide you with similar drawings in advance of those filings. I look forward to coordinating with you as we finalize the design of the CHPE project.

Sincerely,

Ben Cole  
[REDACTED]

---

NOTICE: This communication and any attachments ("this message") may contain information which is privileged, confidential, proprietary or otherwise subject to restricted disclosure under applicable law. This message is for the sole use of the intended recipient(s). Any unauthorized use, disclosure, viewing, copying, alteration, dissemination or distribution of, or reliance on, this message is strictly prohibited. If you have received this message in error, or you are not an authorized or intended recipient, please notify the sender immediately by replying to this message, delete this message and all copies from your e-mail system and destroy any printed copies.



## Laurie Reynolds

---

**From:** Ben.Cole-PTR [REDACTED]  
**Sent:** Friday, October 7, 2022 6:02 PM  
**To:** Philip.Tanedo; Daniel.Keener; Justine.Rojas; Tylor.Bottorff; Jason.Neff  
**Subject:** [EXTERNAL] ATT Packages 3, 7A and 7B Comments  
**Attachments:** FW: CHPE Collocated Infrastructure Details\_1C\_ATT

**Follow Up Flag:** Follow up  
**Flag Status:** Flagged

Hello Kiewit,

The following feedback was received from ATT on EM&CPs 3, 7A and 7B.

Package 3 Link: [CHPE-SUB-0108-00-ATT - Utility Matrix 8.25.2022.pdf](#)

Between 30127+83 – 30134+78, your very close with the duct bank and the splice box – can these be shifted?

Between 30142+08 – 30153+43, again very close – can this be shifted?

Other crossings are at 30627+00, 31358+50, and 31376+75

Package 7A Link: [Package 7A AT&T Co-Located Infrastructure 2022-09-15.pdf](#)

Not AT&T

Package 7B Link: [CHPE-SUB-0119-00-Package 7B AT&T Co-Located Infrastructure Package 2022-09-16.pdf](#)

One crossing at 72522+82, others are not AT&T

The attachment includes this information but could be confusing (due to 1C in the file name) so the relevant info is included above..

Thanks,  
Ben



**Ben Cole, PG**  
Lead Consultant  
Professional Geologist



WSP USA  
40 La Riviere Drive, Suite 320  
Buffalo, New York 14202

[wsp.com](http://wsp.com)

restricted disclosure under applicable law. This message is for the sole use of the intended recipient(s). Any unauthorized use, disclosure, viewing, copying, alteration, dissemination or distribution of, or reliance on, this message is strictly prohibited. If you have received this message in error, or you are not an authorized or intended recipient, please notify the sender immediately by replying to this message, delete this message and all copies from your e-mail system and destroy any printed copies.

## Laurie Reynolds

---

**From:** Ben.Cole-PTR [REDACTED]  
**Sent:** Monday, November 14, 2022 9:23 PM  
**To:** Ayokunle.Kafi-PTR; Michael.Main-PTR1; Nolan.Mazur-PTR; Tylor.Bottorff; Justine.Rojas; Gregory.Brickham; Jason.Neff; Philip.Tanedo; Daniel.Keener; Mandy.Medcalf; Mark.Swallow; Matthew.Wetzel  
**Cc:** Rick.Chase-PTR; Will Davie; Sam King; Josh Bagnato; Bernard, John; Shehadeh, Feras; Parmar, Snehal; Laura.Grassi (WSP); Brown, Michael; David.Albers-PTR; Bente, Christopher; Sherry.Shariat-PTR; chpedoccontrol@portal3.pbid.com  
**Subject:** [EXTERNAL] FW: CHPE Project: Update to "Next Steps"

Good Evening All,

Please see below comments from Central Hudson on how to maximize efficiency of the design and review of CHG-CHPE interactions.

Thanks,

[REDACTED]

---

**From:** Dimisko, Brian [REDACTED]  
**Sent:** Monday, November 14, 2022 4:16 PM  
**To:** [REDACTED]

Ben, Rick

Confirming our discussion this afternoon, following our initial weekly team project status call:

I met with our Gas Transmission & Distribution project staff (Joe Koberger & Chris Broner) and Electric Transmission project staff (Kyle Bragg) to discuss the takeaways from today's status call. Their collective recommendation is that CHGE should send CHPE the GIS map data comprised of CHGE's electric and gas infrastructure that overlaps with EM&CP Packages 6 and 7A. Rationale for this update to 'next steps': It's our understanding per project status call that the alignment of the CHPE Line continues to undergo some design changes; in addition, we (CHGE) have confirmed that an identified gas distribution line crossing shown in EM&CP Package 6A is actually *not* CHGE infrastructure (and this was the first crossing that CHGE staff reviewed from the EM&CP set).

Therefore, the CHGE team feels that most productive path forward would be for CHGE to provide CHPE with the noted GIS system files, thereby allowing CHPE staff the ability to confirm the identity and location of affected CHGE infrastructure crossings per CHPE's final alignment design (when complete). Following this, CHPE would provide CHGE with the applicable infrastructure crossing data thereby allowing CHGE staff to review each specific crossing.

Per my discussions with our engineering team:

**For the electric transmission line crossings**, a parallel offset distance of 25 feet or more from centerline to the CHPE Line may allow for an expedited review by CHGE staff. **For the gas transmission line crossings**, a parallel offset distance of 10 feet or more may allow for an expedited review by CHGE staff; likewise, a bored perpendicular offset distance of 10 feet or more may allow for an expedited review by CHGE staff. However (as we discussed), each infrastructure crossing will require individual review by CHGE staff. *Our affected engineering staffs may wish to clarify any of the information stated herein.*

In the meantime, I'll reach out to our GIS team and get the ball rolling on the transmittal of our affected GIS map system files as noted above.

Thanks – and please feel free to contact me with any questions.

Brian

Brian N. Dimisko  
Project Manager  
Central Hudson Gas & Electric Corp.  
284 South Avenue  
Poughkeepsie, NY 12601



We Care About Your Privacy. This message contains privileged information and is only for the intended recipient. If the reader of this message is not the intended recipient, or an employee or agent responsible for delivering this message to the intended recipient, please notify the sender immediately by replying to this note and deleting all copies. Thank you.

---

NOTICE: This communication and any attachments ("this message") may contain information which is privileged, confidential, proprietary or otherwise subject to restricted disclosure under applicable law. This message is for the sole use of the intended recipient(s). Any unauthorized use, disclosure, viewing, copying, alteration, dissemination or distribution of, or reliance on, this message is strictly prohibited. If you have received this message in error, or you are not an authorized or intended recipient, please notify the sender immediately by replying to this message, delete this message and all copies from your e-mail system and destroy any printed copies.

## Laurie Reynolds

---

**From:** Dimisko, Brian [REDACTED]  
**Sent:** Sunday, November 27, 2022 8:58 PM  
**To:** Laura.Grassi (WSP); Ben.Cole-PTR; Rick.Chase-PTR; Tylor.Bottorff  
**Cc:** Koberger, Joseph; Broner, Christopher; Bragg, Kyle; Mangels, Luke; McLean, Mark; Rottkamp, Christopher; Borchert, John; Nolan.Mazur-PTR; Michael.Main-PTR1; Ayokunle.Kafi-PTR; Josh Bagnato; Philip.Tanedo; Daniel.Keener; Parmar, Snehal; Shehadeh, Feras; Bernard, John; David.Albers-PTR; Gregory.Brickham; Mandy.Medcalf; Brown, Neil; Meyers, Robert; JJ.Pierce-PTR; Kenny.Rogers-PTR; Jeffrey.Hall-PTR; Corrigan, Eoin; Sam King; Justine.Rojas; Brown, Michael; Jeffrey.Dayhoff; Mark.Swallow; Matthew.Wetzel; Zackary.Mayes; Kelli.Bell-PTR  
**Subject:** [EXTERNAL] RE: Recurring Monday 1pm CHGE/CHPE call  
**Attachments:** DRAFT\_Upland Collocated Infrastructure Meeting with CHGE Notes\_11-21-22\_Dimisko EDITS.docx

**Follow Up Flag:** Follow up  
**Flag Status:** Flagged

All

Please find attached my recommended 'red line' edits to the DRAFT Minutes from 11-21-2022 (no edits to the DRAFT Minutes for 11-14-2022). Overall I found the DRAFT Minutes to be very complete and accurate (well done!). I'm on vacation until Tuesday (11/29), but I may try to join tomorrow's 1 PM status call if I can step away from projects at home. Otherwise, I'll catch up with Ben and Rick on Tuesday.

Thanks.

Brian

Brian N. Dimisko  
Project Manager  
Central Hudson Gas & Electric Corp.  
284 South Avenue  
Poughkeepsie, NY 12601  
[REDACTED]



We Care About Your Privacy. This message contains privileged information and is only for the intended recipient. If the reader of this message is not the intended recipient, or an employee or agent responsible for delivering this message to the intended recipient, please notify the sender immediately by replying to this note and deleting all copies. Thank you.

[REDACTED]

Subject: RE: Recurring Monday 1pm CHGE/CHPE call

**CAUTION!!! This Message Is From an External Sender.**  
STOP and verify sender email address, LOOK closely at the content, DON'T click on any unknown attachments or links and REPORT anything suspicious.

**\*\*\* WARNING - EXTERNAL EMAIL \*\*\* USE CAUTION BEFORE OPENING LINKS/ATTACHMENTS \*\*\* NEVER SUPPLY USERID/PASSWORD INFORMATION \*\*\***

All,

Please find attached draft minutes from last week's call (sorry for the delay) and this week's call. Please let me know any comments/revisions.

Have a Happy Thanksgiving,  
Laura

-----Original Appointment-----

From: Cole, Benjamin [REDACTED]  
Sent: Tuesday, November 8, 2022 10:52 AM  
To: Cole, Benjamin; Dimisko, Brian; Rick Chase; Tylor.Bottorff  
Cc: Koberger, Joseph; Broner, Christopher; Bragg, Kyle; Mangels, Luke; McLean, Mark; Rottkamp, Christopher; Borchert, John; Nolan Mazur; Michael Main; Ayokunle Kafi; Josh Bagnato; Philip. Tanedo; Daniel.Keener; Parmar, Snehal; Shehadeh, Feras; Bernard, John; Albers, David; Gregory.Brickham; Mandy. Medcalf; Brown, Neil; Meyers, Robert; JJ Pierce; Kenny Rogers; Hall, Jeffrey; Corrigan, Eoin; Sam King; Grassi, Laura; Justine. Rojas; Brown, Michael;

Jeffrey.Dayhoff; Mark.Swallow; Matthew.Wetzel; zackary.mayes; Kelli Bell

**Subject:** Recurring Monday 1pm CHGE/CHPE call

**When:** Monday, November 21, 2022 1:00 PM-2:00 PM (UTC-05:00) Eastern Time (US & Canada).

**Where:** Microsoft Teams Meeting

Hi All,

As discussed yesterday. Recurring weekly Monday 1pm eastern call to discuss CHGE-CHPE interactions, needs, etc. Through 6/1/23 for now.

---

## Microsoft Teams meeting

**Join on your computer, mobile app or room device**

[Click here to join the meeting](#)

[REDACTED]

[REDACTED]

[Find a local number](#) | [Reset PIN](#)

[Learn More \[aka.ms\]](#) | [Meeting options](#)

---

NOTICE: This communication and any attachments ("this message") may contain information which is privileged, confidential, proprietary or otherwise subject to restricted disclosure under applicable law. This message is for the sole use of the intended recipient(s). Any unauthorized use, disclosure, viewing, copying, alteration, dissemination or distribution of, or reliance on, this message is strictly prohibited. If you have received this message in error, or you are not an authorized or intended recipient, please notify the sender immediately by replying to this message, delete this message and all copies from your e-mail system and destroy any printed copies.

## Laurie Reynolds

---

**From:** Ben.Cole-PTR <ben.cole@wsp.com>  
**Sent:** Wednesday, October 5, 2022 1:32 PM  
**To:** Philip.Tanedo; Daniel.Keener; Justine.Rojas; Tylor.Bottorff  
**Subject:** [EXTERNAL] Lehigh Cement Package 7A CI Info  
**Attachments:** RE: [EXTERNAL] CHPE Collocated Infrastructure Details\_EM&CP 7A LeHigh

**Follow Up Flag:** Follow up  
**Flag Status:** Flagged

Hello Kiewit,

Please see info received from Lehigh in response to Segment 11/EM&CP 7A CI Plan/Profile. This will come through as a Transmittal in the doc control system as well.

Thanks,



**Ben Cole, PG**  
Lead Consultant  
Professional Geologist



WSP USA  
40 La Riviere Drive, Suite 320  
Buffalo, New York 14202

[wsp.com](http://wsp.com)

---

NOTICE: This communication and any attachments ("this message") may contain information which is privileged, confidential, proprietary or otherwise subject to restricted disclosure under applicable law. This message is for the sole use of the intended recipient(s). Any unauthorized use, disclosure, viewing, copying, alteration, dissemination or distribution of, or reliance on, this message is strictly prohibited. If you have received this message in error, or you are not an authorized or intended recipient, please notify the sender immediately by replying to this message, delete this message and all copies from your e-mail system and destroy any printed copies.



## Laurie Reynolds

---

**From:** Ben.Cole-PTR [REDACTED]  
**To:** Fitzgerald, Michael  
**Subject:** [EXTERNAL] CHPE Collocated Infrastructure Details\_EM&CP 4B, 6, and 7A MCI Verizon Business

Good Afternoon Mr. Fitzgerald,

I'm writing on behalf of Transmission Developers Inc. ("TDI"), owner of the Champlain Hudson Power Express ("CHPE" or "Project") transmission line project. The purpose of this correspondence is to provide more detailed information related to how the CHPE project is designed to interact with your infrastructure and to solicit feedback from your company regarding the Project's alignment.

The CHPE is a fully permitted 339-mile underground and underwater high voltage direct current (HVDC) electric transmission line that will import up to 1,250 MW of renewable power from Canada and send it to the New York City metro area (see <https://chpexpress.com> for additional information).

At the links below please find design drawings of the proposed CHPE alignment where it involves your infrastructure within the Segment 6 Environmental Management and Construction Plan ("EM&CP") Packages 4B, 6, and 7A.

Links:

[Package 4B MCI Co-Located Infrastructure Package 2022-10-31.pdf](#)

[Package 6 MCI Co-Located Infrastructure 2022-09-15.pdf](#)

[Package 7A MCI Co-Located Infrastructure Package 2022-10-31.pdf](#)

TDI will be submitting these plans to the New York State Public Service Commission ("PSC") for portions of the Project in your area. This information is a follow-up to previous communications to you providing general project information and typical infrastructure crossing drawings.

Please review the linked information regarding the CHPE alignment relating to your infrastructure and provide concurrence with the Project's cable separation and alignment and any feedback to me [REDACTED] November 16, 2022. It is important to TDI that the construction and operation of the CHPE project does not interfere with the continued operation of your infrastructure.

To the extent that the CHPE alignment interacts with your infrastructure within future Segment EM&CP submissions, we will provide you with similar drawings in advance of those filings. I look forward to coordinating with you as we finalize the design of the CHPE project.

Sincerely,



**Ben Cole, PG**

Lead Consultant

Professional Geologist\*

\*AR, DE, GA, IL, KY, NC, NY, PA



WSP USA  
40 La Riviere Drive, Suite 320  
Buffalo, New York 14202

[wsp.com](http://wsp.com)

---

NOTICE: This communication and any attachments ("this message") may contain information which is privileged, confidential, proprietary or otherwise subject to restricted disclosure under applicable law. This message is for the sole use of the intended recipient(s). Any unauthorized use, disclosure, viewing, copying, alteration, dissemination or distribution of, or reliance on, this message is strictly prohibited. If you have received this message in error, or you are not an authorized or intended recipient, please notify the sender immediately by replying to this message, delete this message and all copies from your e-mail system and destroy any printed copies.

## Laurie Reynolds

---

**From:** Ben.Cole-PTR [REDACTED]  
**Sent:** Wednesday, November 2, 2022 4:07 PM  
**To:** Fitzgerald, Michael  
**Subject:** [EXTERNAL] CHPE Collocated Infrastructure Details\_EM&CP 4B, 6, and 7A MCI Verizon Business

Good Afternoon Mr. Fitzgerald,

I'm writing on behalf of Transmission Developers Inc. ("TDI"), owner of the Champlain Hudson Power Express ("CHPE" or "Project") transmission line project. The purpose of this correspondence is to provide more detailed information related to how the CHPE project is designed to interact with your infrastructure and to solicit feedback from your company regarding the Project's alignment.

The CHPE is a fully permitted 339-mile underground and underwater high voltage direct current (HVDC) electric transmission line that will import up to 1,250 MW of renewable power from Canada and send it to the New York City metro area (see <https://chpexpress.com> for additional information).

At the links below please find design drawings of the proposed CHPE alignment where it involves your infrastructure within the Segment 6 Environmental Management and Construction Plan ("EM&CP") Packages 4B, 6, and 7A.

Links:

[Package 4B MCI Co-Located Infrastructure Package 2022-10-31.pdf](#)

[Package 6 MCI Co-Located Infrastructure 2022-09-15.pdf](#)

[Package 7A MCI Co-Located Infrastructure Package 2022-10-31.pdf](#)

TDI will be submitting these plans to the New York State Public Service Commission ("PSC") for portions of the Project in your area. This information is a follow-up to previous communications to you providing general project information and typical infrastructure crossing drawings.

Please review the linked information regarding the CHPE alignment relating to your infrastructure and provide concurrence with the Project's cable separation and alignment and any feedback to me [REDACTED] by November 16, 2022. It is important to TDI that the construction and operation of the CHPE project does not interfere with the continued operation of your infrastructure.

To the extent that the CHPE alignment interacts with your infrastructure within future Segment EM&CP submissions, we will provide you with similar drawings in advance of those filings. I look forward to coordinating with you as we finalize the design of the CHPE project.

Sincerely,



**Ben Cole, PG**

Lead Consultant

Professional Geologist\*

\*AR, DE, GA, IL, KY, NC, NY, PA



WSP USA  
40 La Riviere Drive, Suite 320  
Buffalo, New York 14202

[wsp.com](http://wsp.com)

---

NOTICE: This communication and any attachments ("this message") may contain information which is privileged, confidential, proprietary or otherwise subject to restricted disclosure under applicable law. This message is for the sole use of the intended recipient(s). Any unauthorized use, disclosure, viewing, copying, alteration, dissemination or distribution of, or reliance on, this message is strictly prohibited. If you have received this message in error, or you are not an authorized or intended recipient, please notify the sender immediately by replying to this message, delete this message and all copies from your e-mail system and destroy any printed copies.

## Laurie Reynolds

---

**From:** Ben.Cole-PTR [REDACTED]  
**Sent:** Thursday, September 22, 2022 10:13 PM  
**To:** Kenneth.Mann@charter.com; Chad.Burgio@charter.com; Aaron.Frasier@charter.com  
**Subject:** [EXTERNAL] CHPE Collocated Infrastructure Details\_EM&CP 3 and 7A Time Warner

Good Evening All,

I'm writing on behalf of Transmission Developers Inc. ("TDI"), owner of the Champlain Hudson Power Express ("CHPE" or "Project") transmission line project. The purpose of this correspondence is to provide more detailed information related to how the CHPE project is designed to interact with your infrastructure and to solicit feedback from your company regarding the Project's alignment.

As you may recall from previous communications from Rick Chase at TDI, the CHPE is a fully permitted 339-mile underground and underwater high voltage direct current (HVDC) electric transmission line that will import up to 1,250 MW of renewable power from Canada and send it to the New York City metro area (see <https://chpexpress.com> for additional information).

At the links below please find design drawings of the proposed CHPE alignment where it involves your infrastructure within the Segment 6 Environmental Management and Construction Plan ("EM&CP") Packages 3 and 7A.

Link: [CHPE-SUB-0108-00-Time Warner - Utility Matrix 8.24.2022.pdf](#)  
Link: [Package 7A Time Warner Co-Located Infrastructure 2022-09-15.pdf](#)

TDI will be submitting these plans to the New York State Public Service Commission ("PSC") for portions of the Project in the Towns Fort Edward, Moreau, Northumberland, Wilton, and Catskill. This information is a follow-up to previous communications to you providing general project information and typical infrastructure crossing drawings.

Please review the linked information regarding the CHPE alignment relating to your infrastructure and provide concurrence with the Project's cable separation and alignment and any feedback to me ([REDACTED]) by October 7, 2022. It is important to TDI that the construction and operation of the CHPE project does not interfere with the continued operation of your infrastructure.

To the extent that the CHPE alignment interacts with your infrastructure within future Segment EM&CP submissions, we will provide you with similar drawings in advance of those filings. I look forward to coordinating with you as we finalize the design of the CHPE project.

Sincerely,

Ben Cole  
WSP USA, on behalf of TDI  
[REDACTED]

restricted disclosure under applicable law. This message is for the sole use of the intended recipient(s). Any unauthorized use, disclosure, viewing, copying, alteration, dissemination or distribution of, or reliance on, this message is strictly prohibited. If you have received this message in error, or you are not an authorized or intended recipient, please notify the sender immediately by replying to this message, delete this message and all copies from your e-mail system and destroy any printed copies.

## Laurie Reynolds

---

**From:** Ben.Cole-PTR <[REDACTED]>  
**Sent:** Wednesday, October 5, 2022 2:10 PM  
**To:** Philip.Tanedo; Daniel.Keener; Justine.Rojas; Tylor.Bottorff  
**Subject:** [EXTERNAL] RE: Time Warner CI Info (1 of 2)  
**Attachments:** Package 7A\_Time Warner\_Co-Located Infrastructure\_2022-09-15.pdf

**Follow Up Flag:** Follow up  
**Flag Status:** Flagged

Message 2 of 2 for Time Warner. (see attachment).

---

**From:** Cole, Benjamin  
**Sent:** Wednesday, October 5, 2022 2:06 PM  
**To:** Philip.Tanedo <philip.tanedo@kiewit.com>; 'Daniel.Keener' <Daniel.Keener@kiewit.com>; Justine.Rojas <justine.rojas@kiewit.com>; Tylor.Bottorff <tylor.bottorff@kiewit.com>  
**Subject:** Time Warner CI Info (1 of 2)

(Message 1 of 2 for Time Warner)

Hello Kiewit,

Please see info received from Time Warner in response to recent transmittals, as well as information previously received/forwarded. This will come through as a Transmittal in the doc control system as well.

Thanks,



**Ben Cole, PG**  
Lead Consultant  
Professional Geologist

[REDACTED]  
[REDACTED]  
[REDACTED]  
[REDACTED]  
[REDACTED]

[wsp.com](http://wsp.com)

NOTICE: This communication and any attachments ("this message") may contain information which is privileged, confidential, proprietary or otherwise subject to restricted disclosure under applicable law. This message is for the sole use of the intended recipient(s). Any unauthorized use, disclosure, viewing, copying, alteration, dissemination or distribution of, or reliance on, this message is strictly prohibited. If you have received this message in error, or you are not an authorized or intended recipient, please notify the sender immediately by replying to this message, delete this message and all copies from your e-mail system and destroy any printed copies.



## Laurie Reynolds

---

**From:** Ben.Cole-PTR <b[REDACTED]>  
**Sent:** Thursday, September 22, 2022 10:10 PM  
**To:** [REDACTED]  
**Subject:** [EXTERNAL] CHPE Collocated Infrastructure Details\_EM&CP 7A Town of Catskill

Good Morning,

I'm writing on behalf of Transmission Developers Inc. ("TDI"), owner of the Champlain Hudson Power Express ("CHPE" or "Project") transmission line project. The purpose of this correspondence is to provide more detailed information related to how the CHPE project is designed to interact with your infrastructure and to solicit feedback from your company regarding the Project's alignment.

As you may recall from previous communications from Rick Chase at TDI, the CHPE is a fully permitted 339-mile underground and underwater high voltage direct current (HVDC) electric transmission line that will import up to 1,250 MW of renewable power from Canada and send it to the New York City metro area (see <https://chpexpress.com> for additional information).

At the link below please find design drawings of the proposed CHPE alignment where it involves your infrastructure within the Segment 6 Environmental Management and Construction Plan ("EM&CP") Package 7A.

Link: [Package 7A Town of Catskill Co-Located Infrastructure 2022-09-15.pdf](#)

TDI will be submitting these plans to the New York State Public Service Commission ("PSC") for portions of the Project in the Town of Catskill. This information is a follow-up to previous communications to you providing general project information and typical infrastructure crossing drawings.

Please review the linked information regarding the CHPE alignment relating to your infrastructure and provide concurrence with the Project's cable separation and alignment and any feedback to me ([REDACTED]) by October 7, 2022. It is important to TDI that the construction and operation of the CHPE project does not interfere with the continued operation of your infrastructure.

To the extent that the CHPE alignment interacts with your infrastructure within future Segment EM&CP submissions, we will provide you with similar drawings in advance of those filings. I look forward to coordinating with you as we finalize the design of the CHPE project.

Sincerely,

Ben Cole  
[REDACTED]

alteration, dissemination or distribution of, or reliance on, this message is strictly prohibited. If you have received this message in error, or you are not an authorized or intended recipient, please notify the sender immediately by replying to this message, delete this message and all copies from your e-mail system and destroy any printed copies.