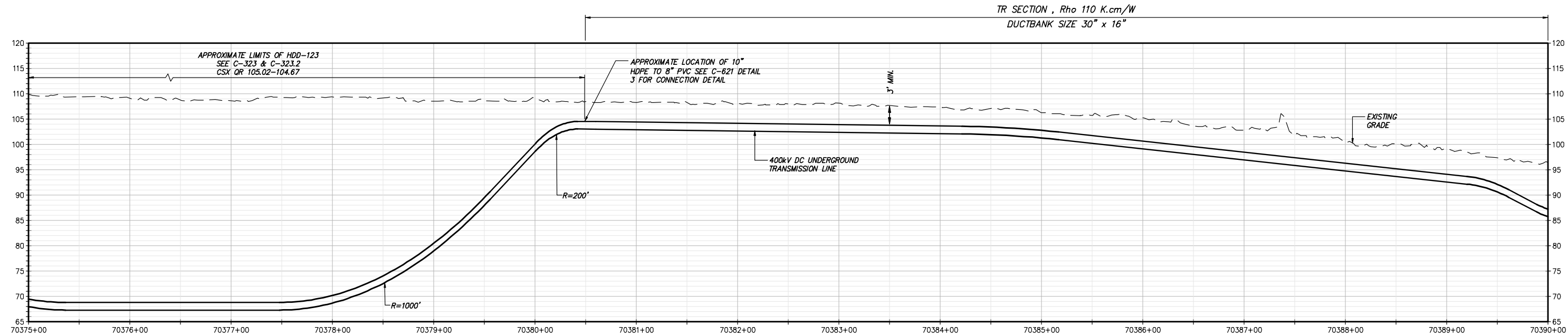
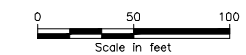


STA. 70375+00.00 TO STA. 70390+00.00 PLAN VIEW
SCALE: 1" = 50'



STA. 70375+00 TO STA. 70390+00 PROFILE VIEW
SCALE: H: 1" = 50' V: 1" = 10'

TR SECTION, Rho 110 K.cm/W
DUCTBANK SIZE 30" x 16"

File: C:\PWORKING\RE\DM651141\21162_7A_C_126-130.DWG Saved: 3/15/2023 10:39:38 PM Plotted: 3/15/2023 10:44:16 PM Current User: Sogucio, Sarah Last Saved By: sarah.sogucio



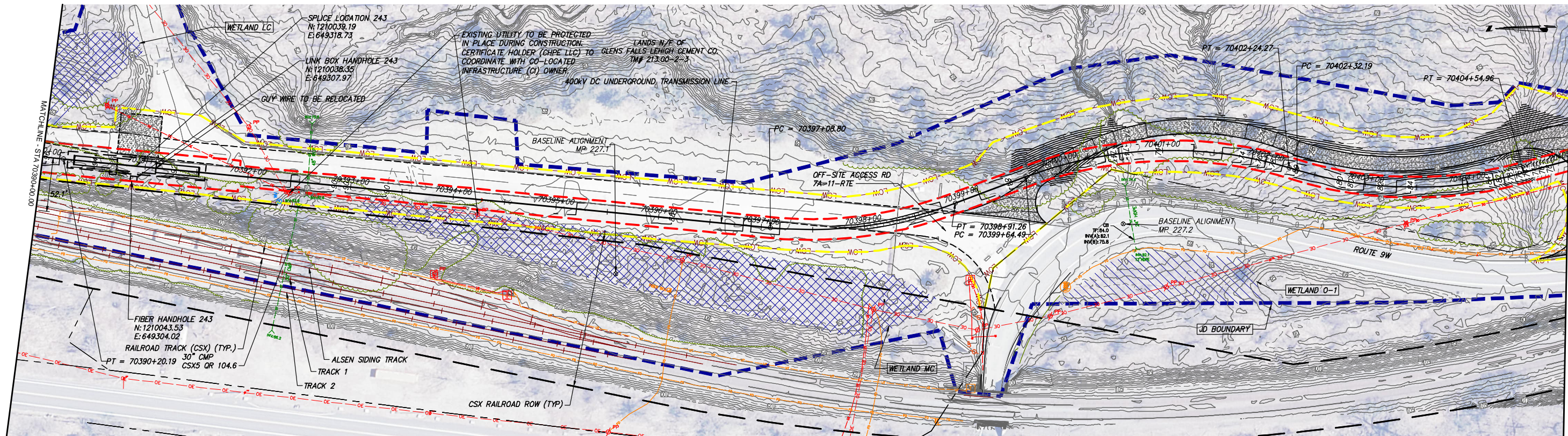
IT IS A VIOLATION OF LAW FOR ANY PERSON, UNLESS THEY ARE ACTING UNDER THE DIRECTION OF A LICENSED PROFESSIONAL ENGINEER, ARCHITECT, LANDSCAPE ARCHITECT OR LAND SURVEYOR TO ALTER AN ITEM IN ANY WAY, IF AN ITEM BEARING THE STAMP OF A LICENSED PROFESSIONAL IS ALTERED, THE ALTERING ENGINEER, ARCHITECT, LANDSCAPE ARCHITECT OR LAND SURVEYOR SHALL STAMP THE DOCUMENT AND INCLUDE THE NOTATION "ALTERED BY" FOLLOWED BY THEIR SIGNATURE, THE DATE OF SUCH ALTERATION, AND A SPECIFIC DESCRIPTION OF THE ALTERATION.

No.	DATE	SUBMITTAL / REVISION DESCRIPTION	DB	APP
F	3/17/2023	FINAL SUBMISSION	RB	JL
E	01/24/2023	DRAFT FINAL SUBMISSION	RB	JL
D	11/16/2022	PRELIMINARY DRAFT FINAL SUBMISSION	RB	JL
C	04/29/2022	60% DESIGN SUBMISSION	RB	JL
B	03/22/2022	PRELIMINARY DESIGN DEVELOPMENT	BV	TK
A	02/14/2022	PRELIMINARY PROGRESS	BV	TK

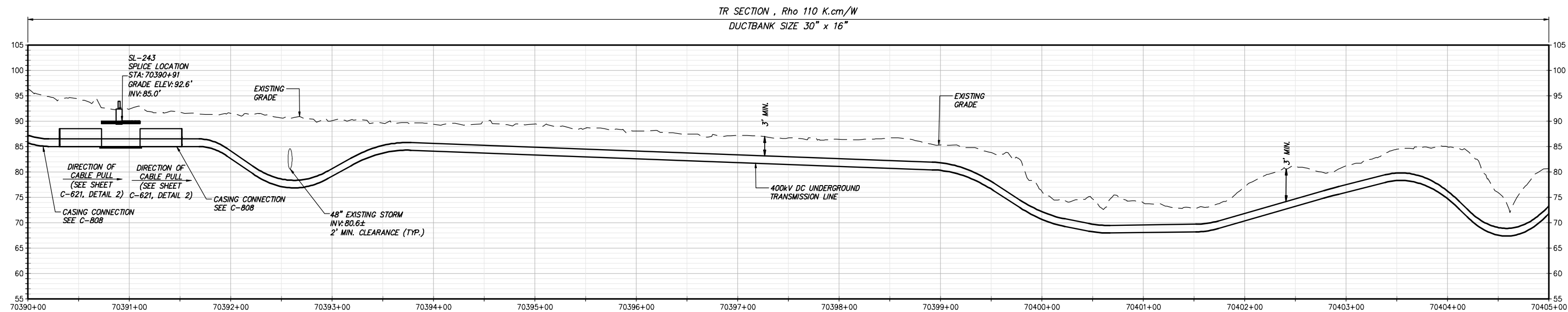
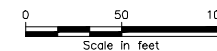
CHAMPLAIN HUDSON POWER EXPRESS
SEGMENT 11 (PACKAGE 7A) - CSX: CATSKILL
STA. 70375+00.00 TO STA. 70390+00.00

KIEWIT PROJECT NO.	21162
TT PROJECT NO.	204-3701
DRAWING NO.	C-126
DATE	03/17/2023
SH.NO.	OF

DRAWN BY: RB DESIGNED BY: AC APPROVED BY: JL SCALE AS SHOWN DATE 03/17/2023
REV. NO. F SH.NO. OF



STA. 70390+00.00 TO STA. 70405+00.00 PLAN VIEW
SCALE: 1" = 50'



STA. 70390+00 TO STA. 70405+00 PROFILE VIEW
SCALE: H: 1" = 50' V: 1" = 10'



TETRA TECH ENGINEERING AND SURVEYING P.C.
(A NEW YORK PROFESSIONAL CORPORATION)

IT IS A VIOLATION OF LAW FOR ANY PERSON, UNLESS THEY ARE ACTING UNDER THE DIRECTION OF A LICENSED PROFESSIONAL ENGINEER, ARCHITECT, LANDSCAPE ARCHITECT OR LAND SURVEYOR TO ALTER AN ITEM IN ANY WAY, IF AN ITEM BEARING THE STAMP OF A LICENSED PROFESSIONAL IS ALTERED. THE ALTERING ENGINEER, ARCHITECT, LANDSCAPE ARCHITECT OR LAND SURVEYOR SHALL STAMP THE DOCUMENT AND INCLUDE THE NOTATION "ALTERED BY" FOLLOWED BY THEIR SIGNATURE, THE DATE OF SUCH ALTERATION, AND A SPECIFIC DESCRIPTION OF THE ALTERATION.

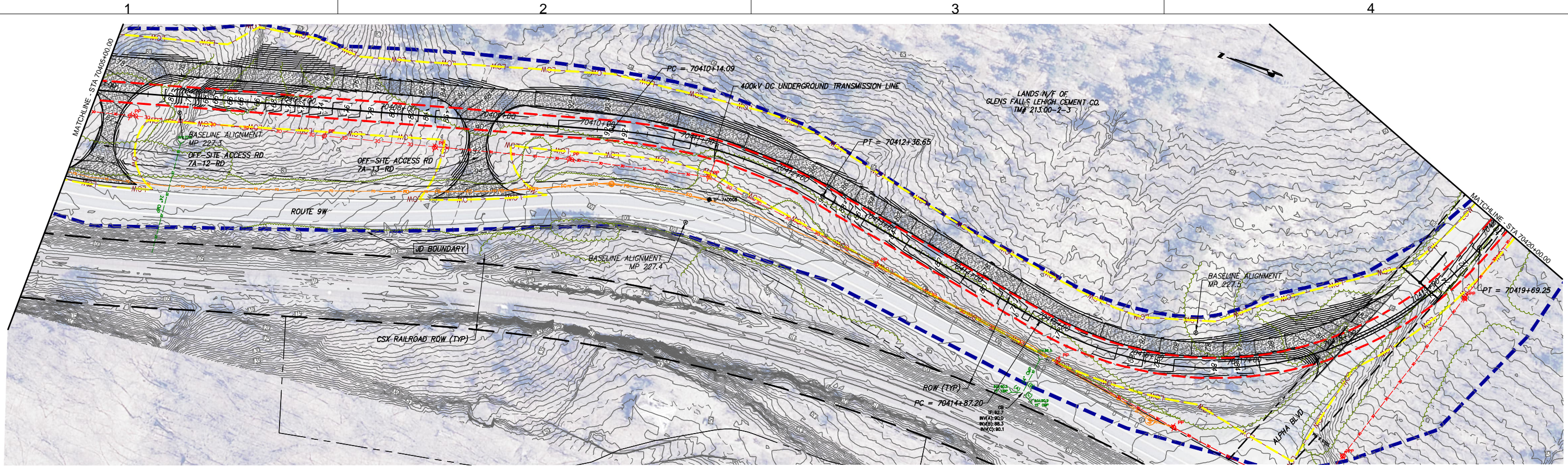
No.	DATE	SUBMITTAL / REVISION DESCRIPTION	DB	APP
F	3/17/2023	FINAL SUBMISSION	RB	JL
E	01/24/2023	DRAFT FINAL SUBMISSION	RB	JL
D	11/16/2022	PRELIMINARY DRAFT FINAL SUBMISSION	RB	JL
C	04/29/2022	60% DESIGN SUBMISSION	RB	JL
B	03/22/2022	PRELIMINARY DESIGN DEVELOPMENT	BV	TK
A	02/14/2022	PRELIMINARY PROGRESS	BV	TK

CHAMPLAIN HUDSON POWER EXPRESS
SEGMENT 11 (PACKAGE 7A) - CSX: CATSKILL
STA. 70390+00.00 TO STA. 70405+00.00

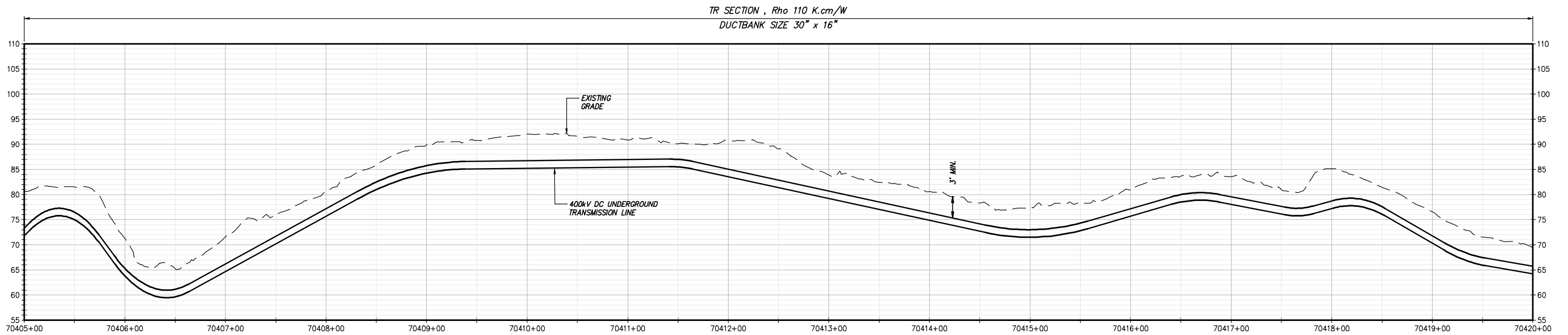
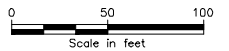
KIEWIT PROJECT NO.	21162
TT PROJECT NO.	204-3701
DRAWING NO.	C-127
DATE	03/17/2023
SH.NO.	OF

DRAWN BY: RB DESIGNED BY: AC APPROVED BY: JL SCALE AS SHOWN DATE 03/17/2023
REV. NO. F SH.NO. OF

File: C:\PWORKING\REV\DM651141\21162_7A_C_127-130.DWG Saved: 3/15/2023 9:46:05 PM Plotted: 3/15/2023 9:50:53 PM Current User: Saguicio, Sarah_LastSavedBy: sarah.saguicio



STA. 70405+00.00 TO STA. 70420+00.00 PLAN VIEW
SCALE: 1" = 50'



TR SECTION, Rho 110 K.cm/W
DUCTBANK SIZE 30" x 16"
STA. 70405+00 TO STA. 70420+00 PROFILE VIEW
SCALE: H:1" = 50' V:1" = 10'



TETRA TECH ENGINEERING AND SURVEYING P.C.
(A NEW YORK PROFESSIONAL CORPORATION)

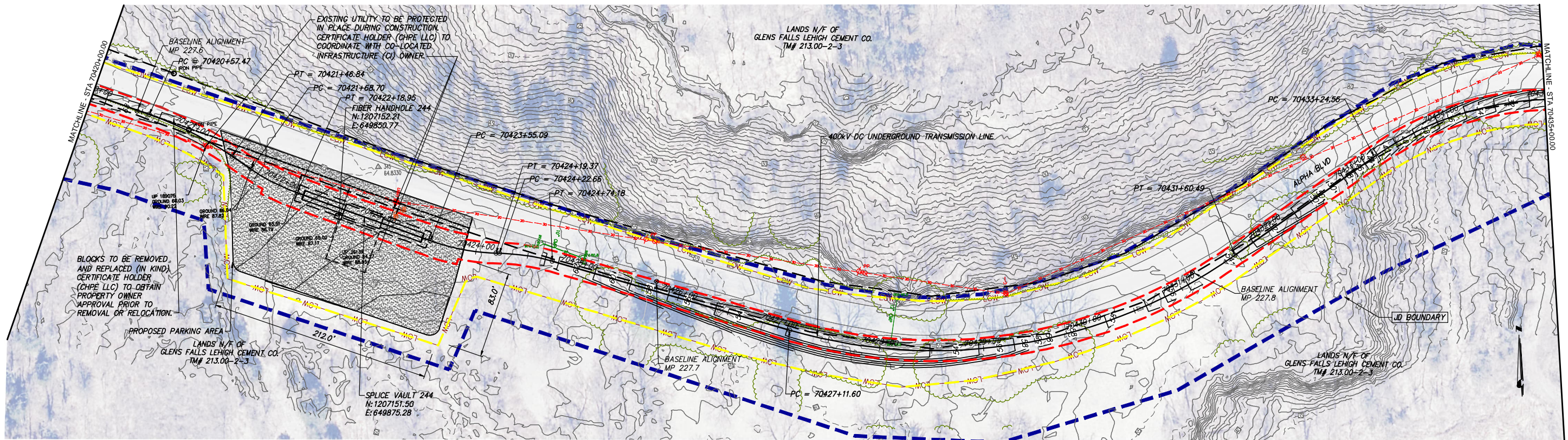
IT IS A VIOLATION OF LAW FOR ANY PERSON, UNLESS THEY ARE ACTING UNDER THE DIRECTION OF A LICENSED PROFESSIONAL ENGINEER, ARCHITECT, LANDSCAPE ARCHITECT OR LAND SURVEYOR TO ALTER AN ITEM IN ANY WAY, IF AN ITEM BEARING THE STAMP OF A LICENSED PROFESSIONAL IS ALTERED. THE ALTERING ENGINEER, ARCHITECT, LANDSCAPE ARCHITECT OR LAND SURVEYOR SHALL STAMP THE DOCUMENT AND INCLUDE THE NOTATION "ALTERED BY" FOLLOWED BY THEIR SIGNATURE, THE DATE OF SUCH ALTERATION, AND A SPECIFIC DESCRIPTION OF THE ALTERATION.

No.	DATE	SUBMITTAL / REVISION DESCRIPTION	DB	APP
F	3/17/2023	FINAL SUBMISSION	RB	JL
E	01/24/2023	DRAFT FINAL SUBMISSION	RB	JL
D	11/16/2022	PRELIMINARY DRAFT FINAL SUBMISSION	RB	JL
C	04/29/2022	60% DESIGN SUBMISSION	RB	JL
B	03/22/2022	PRELIMINARY DESIGN DEVELOPMENT	BV	TK
A	02/14/2022	PRELIMINARY PROGRESS	BV	TK

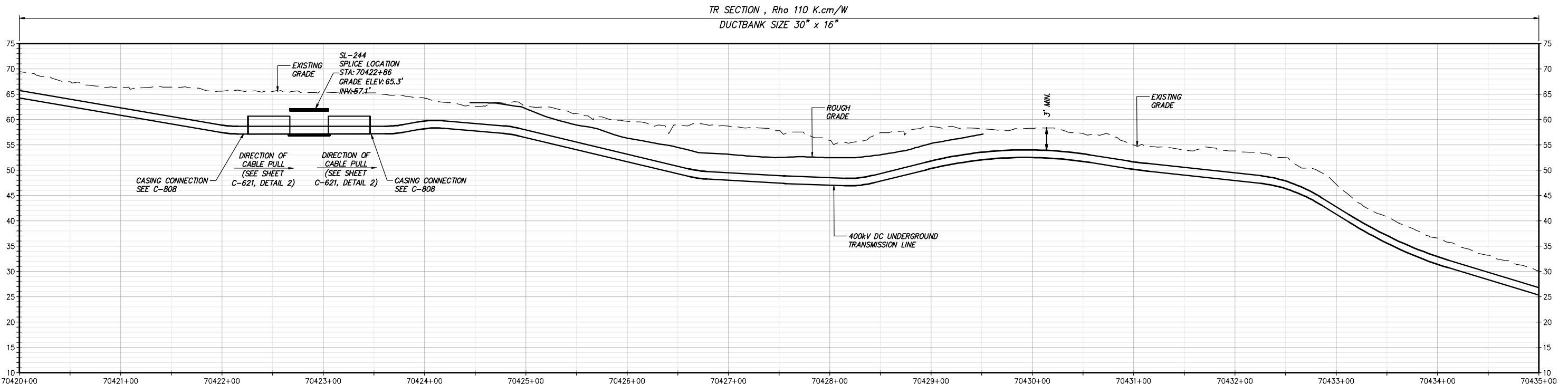
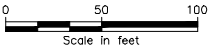
CHAMPLAIN HUDSON POWER EXPRESS
SEGMENT 11 (PACKAGE 7A) - CSX: CATSKILL
STA. 70405+00.00 TO STA. 70420+00.00

KIEWIT PROJECT NO.	21162
TT PROJECT NO.	204-3701
DRAWING NO.	C-128
DATE	03/17/2023
SH.NO.	OF

DRAWN BY: RB DESIGNED BY: AC APPROVED BY: JL SCALE AS SHOWN DATE 03/17/2023
REV. NO. F SH.NO. OF



STA. 70420+00.00 TO STA. 70435+00.00 PLAN VIEW
SCALE: 1" = 50'



STA. 70420+00 TO STA. 70435+00 PROFILE VIEW
SCALE: H: 1" = 50' V: 1" = 10'



TETRA TECH ENGINEERING AND SURVEYING P.C.
(A NEW YORK PROFESSIONAL CORPORATION)

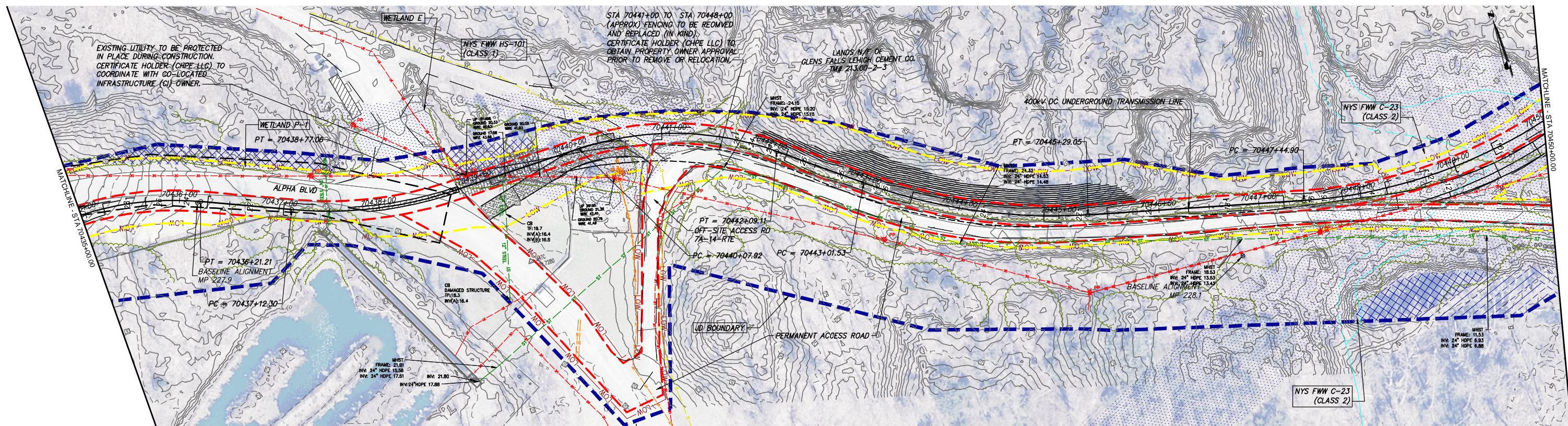
IT IS A VIOLATION OF LAW FOR ANY PERSON, UNLESS THEY ARE ACTING UNDER THE DIRECTION OF A LICENSED PROFESSIONAL ENGINEER, ARCHITECT, LANDSCAPE ARCHITECT OR LAND SURVEYOR TO ALTER AN ITEM IN ANY WAY, IF AN ITEM BEARING THE STAMP OF A LICENSED PROFESSIONAL IS ALTERED. THE ALTERING ENGINEER, ARCHITECT, LANDSCAPE ARCHITECT OR LAND SURVEYOR SHALL STAMP THE DOCUMENT AND INCLUDE THE NOTATION "ALTERED BY" FOLLOWED BY THEIR SIGNATURE, THE DATE OF SUCH ALTERATION, AND A SPECIFIC DESCRIPTION OF THE ALTERATION.

No.	DATE	SUBMITTAL / REVISION DESCRIPTION	DB	APP
F	3/17/2023	FINAL SUBMISSION	RB	JL
E	01/24/2023	DRAFT FINAL SUBMISSION	RB	JL
D	11/16/2022	PRELIMINARY DRAFT FINAL SUBMISSION	RB	JL
C	04/29/2022	60% DESIGN SUBMISSION	RB	JL
B	03/22/2022	PRELIMINARY DESIGN DEVELOPMENT	BV	TK
A	02/14/2022	PRELIMINARY PROGRESS	BV	TK

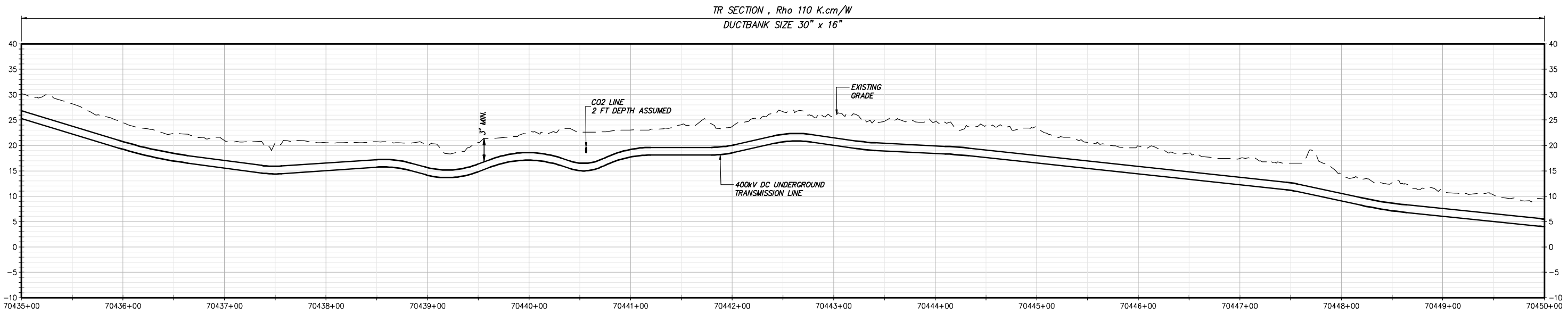
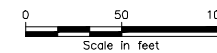
CHAMPLAIN HUDSON POWER EXPRESS
SEGMENT 11 (PACKAGE 7A) - CSX: CATSKILL
STA. 70420+00.00 TO STA. 70437+00.00

KIEWIT PROJECT NO.	21162
TT PROJECT NO.	204-3701
DRAWING NO.	C-129
DATE	03/17/2023
SH.NO.	OF

DRAWN BY: RB DESIGNED BY: AC APPROVED BY: JL SCALE AS SHOWN DATE 03/17/2023
REV. NO. F SH.NO. OF



STA. 70435+00.00 TO STA. 70450+00.00 PLAN VIEW
SCALE: 1" = 50'



STA. 70435+00 TO STA. 70450+00 PROFILE VIEW
SCALE: H:1" = 50' V:1" = 10'



TETRA TECH ENGINEERING AND SURVEYING P.C.
(A NEW YORK PROFESSIONAL CORPORATION)

IT IS A VIOLATION OF LAW FOR ANY PERSON, UNLESS THEY ARE ACTING UNDER THE DIRECTION OF A LICENSED PROFESSIONAL ENGINEER, ARCHITECT, LANDSCAPE ARCHITECT OR LAND SURVEYOR TO ALTER AN ITEM IN ANY WAY. IF AN ITEM BEARING THE STAMP OF A LICENSED PROFESSIONAL IS ALTERED, THE ALTERING ENGINEER, ARCHITECT, LANDSCAPE ARCHITECT OR LAND SURVEYOR SHALL STAMP THE DOCUMENT AND INCLUDE THE NOTATION "ALTERED BY" FOLLOWED BY THEIR SIGNATURE, THE DATE OF SUCH ALTERATION, AND A SPECIFIC DESCRIPTION OF THE ALTERATION.

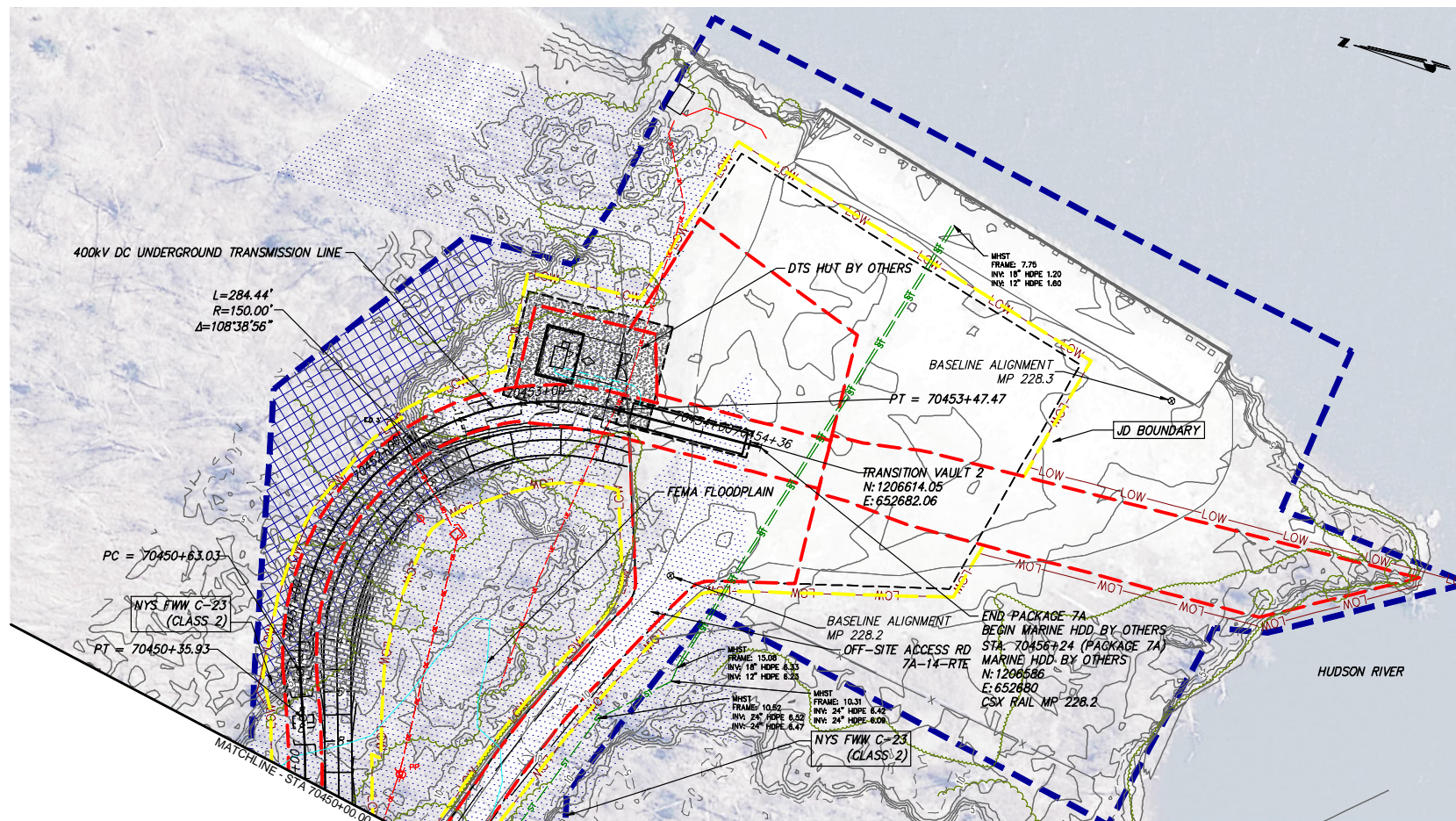
No.	DATE	SUBMITTAL / REVISION DESCRIPTION	DB	APP
F	3/17/2023	FINAL SUBMISSION	RB	JL
E	01/24/2023	DRAFT FINAL SUBMISSION	RB	JL
D	11/16/2022	PRELIMINARY DRAFT FINAL SUBMISSION	RB	JL
C	04/29/2022	60% DESIGN SUBMISSION	RB	JL
B	03/22/2022	PRELIMINARY DESIGN DEVELOPMENT	BV	TK
A	02/14/2022	PRELIMINARY PROGRESS	BV	TK

CHAMPLAIN HUDSON POWER EXPRESS
SEGMENT 11 (PACKAGE 7A) - CSX: CATSKILL
STA. 70435+00.00 TO STA. 70450+00.00

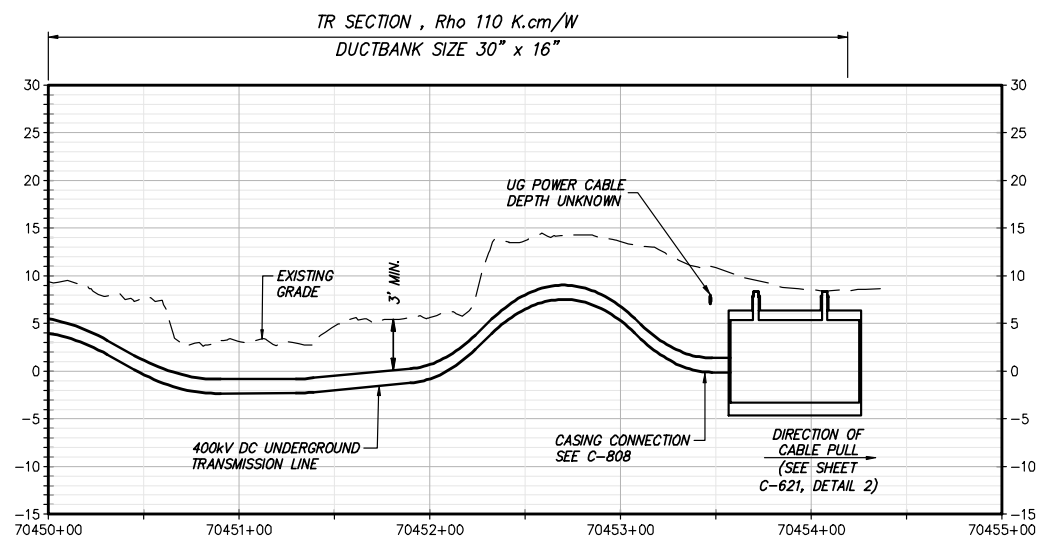
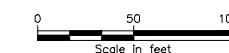
KIEWIT PROJECT NO.	21162
TT PROJECT NO.	204-3701
DRAWING NO.	C-130
DATE	03/17/2023
SH.NO.	OF

SCALE AS SHOWN DATE 03/17/2023
REV. NO. F SH.NO. OF

DRAWN BY: RB DESIGNED BY: AC APPROVED BY: JL



STA. 70450+00.00 TO STA. 70454+36 PLAN VIEW
SCALE: 1" = 50'



STA. 70450+00 TO STA. 70455+00 PROFILE VIEW
SCALE: H:1" = 50' V:1" = 10'

A

B



TETRA TECH ENGINEERING AND SURVEYING P.C.
(A NEW YORK PROFESSIONAL CORPORATION)

IT IS A VIOLATION OF LAW FOR ANY PERSON, UNLESS THEY ARE ACTING UNDER THE DIRECTION OF A LICENSED PROFESSIONAL ENGINEER, ARCHITECT, LANDSCAPE ARCHITECT OR LAND SURVEYOR TO ALTER AN ITEM IN ANY WAY, IF AN ITEM BEARING THE STAMP OF A LICENSED PROFESSIONAL IS ALTERED. THE ALTERING ENGINEER, ARCHITECT, LANDSCAPE ARCHITECT OR LAND SURVEYOR SHALL STAMP THE DOCUMENT AND INCLUDE THE NOTATION "ALTERED BY" FOLLOWED BY THEIR SIGNATURE, THE DATE OF SUCH ALTERATION, AND A SPECIFIC DESCRIPTION OF THE ALTERATION.

No.	DATE	SUBMITTAL / REVISION DESCRIPTION	DB	APP
F	3/17/2023	FINAL SUBMISSION	RB	JL
E	01/24/2023	DRAFT FINAL SUBMISSION	RB	JL
D	11/16/2022	PRELIMINARY DRAFT FINAL SUBMISSION	RB	JL
C	04/29/2022	60% DESIGN SUBMISSION	RB	JL
B	03/22/2022	PRELIMINARY DESIGN DEVELOPMENT	BV	TK
A	02/14/2022	PRELIMINARY PROGRESS	BV	TK

CHAMPLAIN HUDSON POWER EXPRESS
SEGMENT 11 (PACKAGE 7A) - CSX: CATSKILL
STA. 70450+00.00 TO STA. 70454+36

KIEWIT PROJECT NO.	21162
TT PROJECT NO.	204-3701
DRAWING NO.	C-131
DATE	03/17/2023
SH.NO.	OF

DRAWN BY: RB DESIGNED BY: AC APPROVED BY: JL SCALE AS SHOWN DATE 03/17/2023
REV. NO. F SH.NO. OF

ATTACHMENT 6
WATERBODY PHOTOGRAPHS



Stream 51 – upstream
Lat: 42.241703 Long: -73.859364



Stream 51 - downstream

Segment 11 – Package 7A

SITE PHOTOGRAPHS
Champlain Hudson Power Express



Stream 52 – upstream
Lat: 42.242023 Long: -73.859516



Stream 52 - downstream

Segment 11 – Package 7A

SITE PHOTOGRAPHS
Champlain Hudson Power Express



Stream 038- Upstream View facing North
Lat: 42.2351 17°N Long: 73.86 3188°W



Stream 038- Downstream View Facing South

Segment 11 – Package 7A

SITE PHOTOGRAPHS

Champlain Hudson Power Express



Stream 038- Right Bank to Left Bank facing East

Segment 11 – Package 7A

SITE PHOTOGRAPHS

Champlain Hudson Power Express



Stream GP7A-S-BS- upstream
Lat: 73° 51' 51" W Long: 42° 13' 55" N



Stream GP7A-S-BS- downstream

Segment 11 – Package 7A

SITE PHOTOGRAPHS
Champlain Hudson Power Express



**Stream 039- Upstream View facing North
Lat:42.2318 98°N Long:73.864799°W**



Stream 039- Downstream View Facing South

Segment 11 – Package 7A

SITE PHOTOGRAPHS

Champlain Hudson Power Express

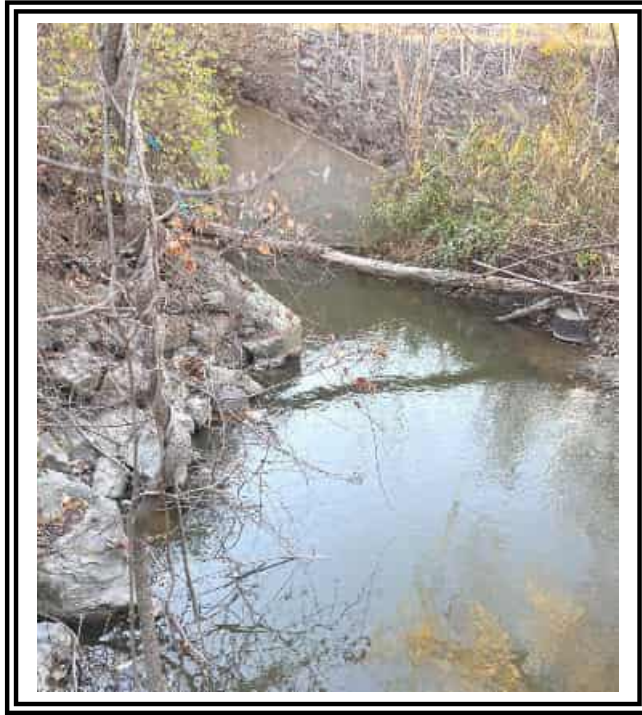


Stream 039- Right Bank to Left Bank facing East

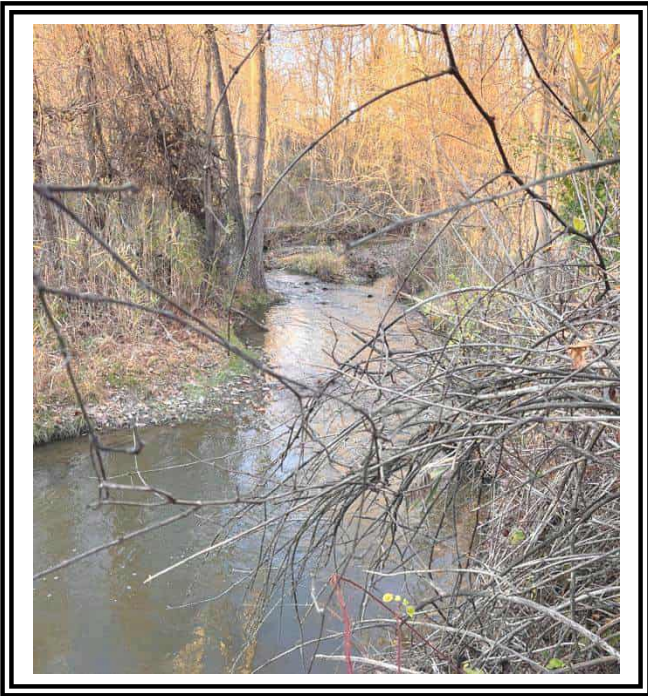
Segment 11 – Package 7A

SITE PHOTOGRAPHS

Champlain Hudson Power Express



Stream GP7A-S-3- upstream
Lat: 73° 52' 10" W Long: 42° 13' 37" N

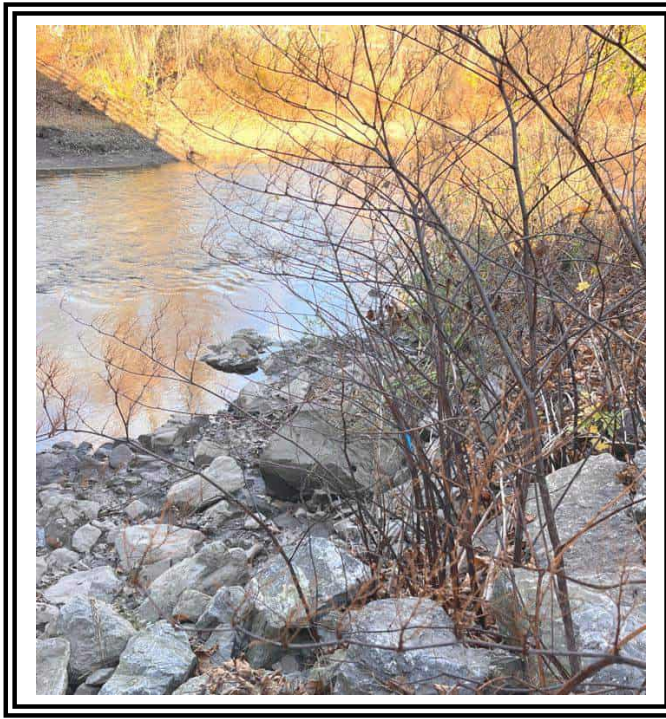


Stream GP7A-S-3- downstream

Segment 11 – Package 7A

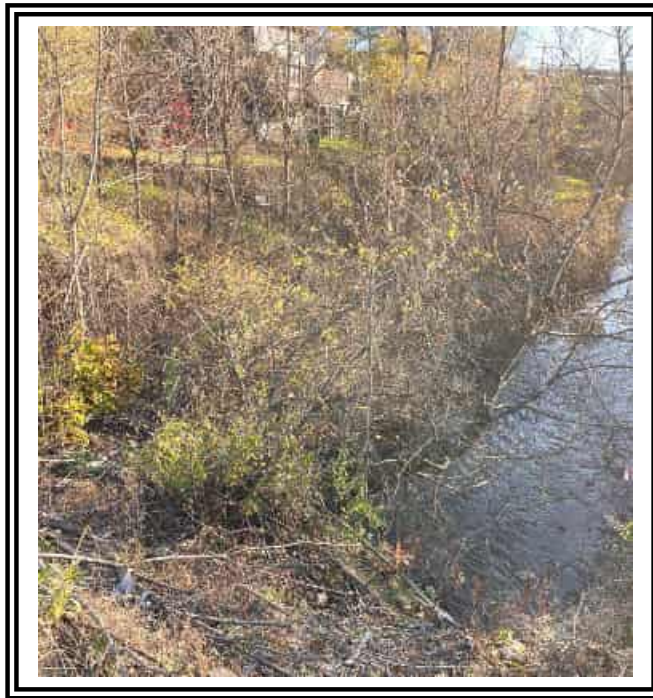
SITE PHOTOGRAPHS

Champlain Hudson Power Express



Stream GP7A-S-2- upstream
Lat: 73°52'15" W Long: 42°13'29" N

Catskill Creek



Stream GP7A-S-2- downstream

Catskill Creek

Segment 11 – Package 7A

SITE PHOTOGRAPHS

Champlain Hudson Power Express



**Stream 041- Upstream View facing West
Lat:42.2162 10°N Long: 73.88 0773°W**



Stream 041- Downstream View Facing East

Segment 11 – Package 7A

SITE PHOTOGRAPHS

Champlain Hudson Power Express



Stream 041- Right Bank to Left Bank facing North

Segment 11 – Package 7A

SITE PHOTOGRAPHS
Champlain Hudson Power Express



Stream 041A- Upstream View facing South



Stream 041A- Downstream View Facing North
Lat:42.2172 83°N Long:73.878646°W

SITE PHOTOGRAPHS

Segment 11 – Package 7A

Champlain Hudson Power Express



Stream 041A- Right Bank to Left Bank facing East

Segment 11 – Package 7A

SITE PHOTOGRAPHS

Champlain Hudson Power Express



Stream 042- Upstream View facing North
Lat:42.2108 53°N Long:73.88749°W



Stream 042- Downstream View Facing South

Segment 11 – Package 7A

SITE PHOTOGRAPHS

Champlain Hudson Power Express



Stream 042- Left Bank to Right Bank facing West

Segment 11 – Package 7A

SITE PHOTOGRAPHS

Champlain Hudson Power Express



**Stream 043- Upstream View facing West
Lat:42.1963 30°N Long:73.899604°W**



Stream 043- Downstream View Facing East

Segment 11 – Package 7A

SITE PHOTOGRAPHS

Champlain Hudson Power Express



Stream 043- Left Bank to Right Bank facing North

Segment 11 – Package 7A

SITE PHOTOGRAPHS

Champlain Hudson Power Express



Stream TA- Upstream View facing West
Lat:42.194741°N Long:73.900219°W

Stream FA-S-TA



Stream TA- Downstream View Facing East

Stream FA-S-TA

Segment 11 – Package 7A

SITE PHOTOGRAPHS

Champlain Hudson Power Express



Stream TA- Left Bank to Right Bank facing North

Stream FA-S-TA

Segment 11 – Package 7A

SITE PHOTOGRAPHS

Champlain Hudson Power Express



**Stream 044- Upstream View facing West
Lat:42.1908 98°N Long: 73.903988°W**



Stream 044- Downstream View Facing East

Segment 11 – Package 7A

SITE PHOTOGRAPHS

Champlain Hudson Power Express



Stream 044- Right to Left Bank facing North

Segment 11 – Package 7A

SITE PHOTOGRAPHS

Champlain Hudson Power Express



Stream 045- Upstream View facing West
Lat:42.1871 54°N Long:73.906421°W



Stream 045- Downstream View Facing East

Segment 11 – Package 7A

SITE PHOTOGRAPHS

Champlain Hudson Power Express



Stream 045- Right to Left Bank facing North

Segment 11 – Package 7A

SITE PHOTOGRAPHS

Champlain Hudson Power Express



**Stream 046- Upstream View facing North
Lat:42.1831 38°N Long:73.908628°W**



Stream 046- Downstream View Facing South

SITE PHOTOGRAPHS

Segment 11 – Package 7A

Champlain Hudson Power Express



Stream 046- Right to Left Bank facing East

Segment 11 – Package 7A

SITE PHOTOGRAPHS
Champlain Hudson Power Express



**Stream 047- Upstream View facing West
Lat:42.182467°N Long:73.908661°W**



Stream 047- Downstream View Facing East

Segment 11 – Package 7A

SITE PHOTOGRAPHS

Champlain Hudson Power Express



Stream 047- Left to Right Bank facing South

Segment 11 – Package 7A

SITE PHOTOGRAPHS

Champlain Hudson Power Express



Stream 047A- Upstream View facing South
Lat:42.181769°N Long:73.909144°W



Stream 047A- Downstream View Facing North

Segment 11 – Package 7A

SITE PHOTOGRAPHS

Champlain Hudson Power Express



Stream 047A- Left to Right Bank facing West

Segment 11 – Package 7A

SITE PHOTOGRAPHS

Champlain Hudson Power Express



Stream 048- Upstream View facing North
Lat:42.175886°N Long:73.912343°W



Stream 048- Downstream View Facing South

SITE PHOTOGRAPHS

Segment 11 – Package 7A

Champlain Hudson Power Express



Stream 048- Left to Right Bank facing West

Segment 11 – Package 7A

SITE PHOTOGRAPHS

Champlain Hudson Power Express



**Stream 049- Facing West– Upstream
Lat:42.171248°N Long:73.914369°W**



Stream 049- Facing East – Downstream

Segment 11 – Package 7A

SITE PHOTOGRAPHS
Champlain Hudson Power Express



Stream 049- Facing North – Right Bank to Left Bank

Segment 11 – Package 7A

SITE PHOTOGRAPHS

Champlain Hudson Power Express



Stream 050- View facing West
Lat:42.163355°N Long:73.917131°W



Stream 050- View Facing East

Segment 11 – Package 7A

SITE PHOTOGRAPHS

Champlain Hudson Power Express



Stream 050- Right Bank to Left Bank - North

Segment 11 – Package 7A

SITE PHOTOGRAPHS

Champlain Hudson Power Express



**Stream GH- Upstream View facing West
Lat:42.163452°N Long: 73.917645°W**



Stream GH- Downstream View Facing East

Segment 11 – Package 7A

SITE PHOTOGRAPHS

Champlain Hudson Power Express



Stream GH- Right Bank to Left Bank facing South

Segment 11 – Package 7A

SITE PHOTOGRAPHS
Champlain Hudson Power Express



Stream GI- Upstream View facing South
Lat:42.163378°N Long:73.917650°W



Stream GI- Downstream View Facing North

SITE PHOTOGRAPHS

Segment 11 – Package 7A

Champlain Hudson Power Express



Stream GI- Right Bank to Left Bank facing East

Segment 11 – Package 7A

SITE PHOTOGRAPHS
Champlain Hudson Power Express

CHIA

