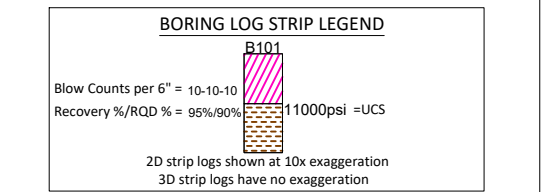
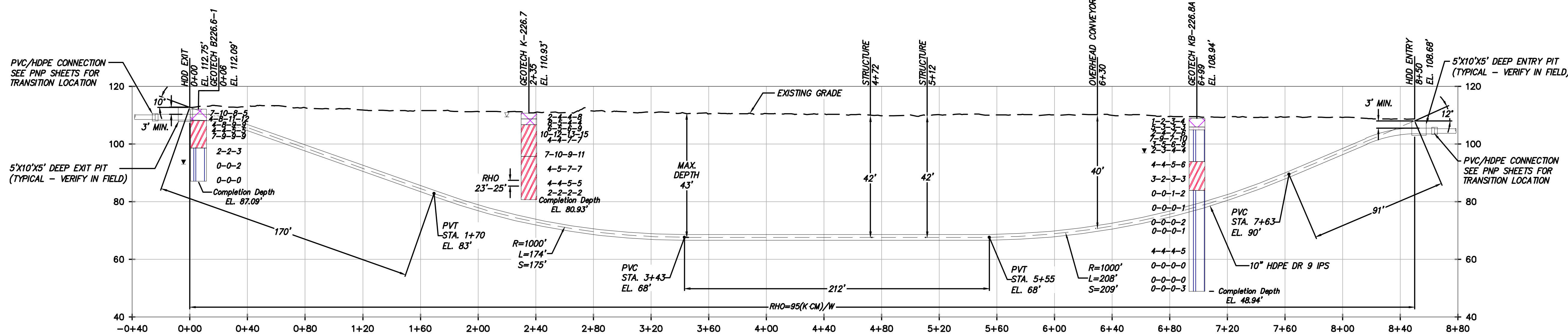


HDD 123 PLAN VIEW
CONDUIT 2



Legend	
[Symbol]	ASPHALT
[Symbol]	Bedrock
[Symbol]	Blowback
[Symbol]	CL
[Symbol]	CL-MH
[Symbol]	CL
[Symbol]	CL-ML
[Symbol]	CONCRETE
[Symbol]	FILL
[Symbol]	GC
[Symbol]	GC-GM
[Symbol]	GM
[Symbol]	GP
[Symbol]	GP-GC
[Symbol]	GP-GM
[Symbol]	GW
[Symbol]	GW-GC
[Symbol]	GW-GM
[Symbol]	Limestone
[Symbol]	MH
[Symbol]	ML
[Symbol]	OH
[Symbol]	DL/OH
[Symbol]	PT
[Symbol]	Rock
[Symbol]	Sandstone
[Symbol]	SC
[Symbol]	SC-SM
[Symbol]	SHALE
[Symbol]	SILTSTONE
[Symbol]	SM
[Symbol]	SP
[Symbol]	SP-SM
[Symbol]	SP-SM
[Symbol]	SW
[Symbol]	SW-SM
[Symbol]	Topsoil
[Symbol]	USGS 601
[Symbol]	USGS 654
[Symbol]	USGS 670
[Symbol]	USGS 702
[Symbol]	USGS 705
[Symbol]	USGS 705
[Symbol]	USGS 708
[Symbol]	USGS 708
[Symbol]	USGS 716
[Symbol]	Void
[Symbol]	Water
[Symbol]	Weathered Rock
[Symbol]	Water Table
[Symbol]	Delayed Water Table
[Symbol]	Asphalt
[Symbol]	Blowback
[Symbol]	Shoulder
[Symbol]	Fat CLAY
[Symbol]	SILTY Fat CLAY
[Symbol]	Lean CLAY
[Symbol]	SILTY CLAY
[Symbol]	Concrete
[Symbol]	FILL
[Symbol]	CLAYEY GRAVEL
[Symbol]	SILTY CLAYEY GRAVEL
[Symbol]	SILTY GRAVEL
[Symbol]	Poorly Graded GRAVEL
[Symbol]	Poorly Graded GRAVEL with CLAY
[Symbol]	Poorly Graded GRAVEL with SILT
[Symbol]	Well Graded GRAVEL
[Symbol]	Well Graded GRAVEL with CLAY
[Symbol]	Well Graded GRAVEL with SILT
[Symbol]	Limestone
[Symbol]	Elastic SILT
[Symbol]	SILT
[Symbol]	ORGANIC Fat CLAY
[Symbol]	ORGANIC Lean CLAY
[Symbol]	ORGANIC SOIL
[Symbol]	PEAT
[Symbol]	Rock
[Symbol]	Sandstone
[Symbol]	CLAYEY SAND
[Symbol]	SILT, CLAYEY SAND
[Symbol]	Shale
[Symbol]	Siltstone
[Symbol]	SILTY SAND
[Symbol]	Poorly Graded SAND
[Symbol]	Poorly Graded SAND with CLAY
[Symbol]	Poorly Graded SAND with SILT
[Symbol]	Well graded SAND
[Symbol]	Well Graded SAND with CLAY
[Symbol]	Well Graded SAND with SILT
[Symbol]	Topsoil
[Symbol]	Gravel or Conglomerate 1
[Symbol]	Subgrade
[Symbol]	Interbedded Sandstone and Shale
[Symbol]	Quartzite
[Symbol]	Schist
[Symbol]	Schist
[Symbol]	Gneiss
[Symbol]	Gneiss
[Symbol]	Granite 1
[Symbol]	Void
[Symbol]	Water
[Symbol]	Undrained
[Symbol]	Water Table during drilling
[Symbol]	Water Table after drilling

Scale in feet when printed on 22x34



HDD 123 PROFILE VIEW
CONDUIT 2

Scale in feet when printed on 22x34

- DESIGN AND CONSTRUCTION NOTES:**
1. INSTALLATION METHOD: HORIZONTAL DIRECTIONAL DRILL.
 2. 10.750" HDPE MIN. W.T. 1.194" DR 9 IPS PIPE.
2.375" HDPE MIN. W.T. 0.339" DR 7 IPS PIPE.
HDD HORIZONTAL LENGTH (L): 850'
HDD DESIGNED PIPE LENGTH (S): 857'
 3. THE MINIMUM THREE JOINT (APPROX. 100 FT) COMBINED CURVE (VERTICAL + HORIZONTAL) RADIUS SHALL NOT BE LESS THAN 800 FT.
 4. THE MINIMUM SEPARATION DISTANCE FROM EXISTING SUBSURFACE UTILITIES SHALL NOT BE LESS THAN 10 FT.
 5. DRILL CONTRACTOR AND GEOTECHNICAL ENGINEER TO DETERMINE LENGTH OF TEMPORARY SURFACE/CONDUCTOR CASING.
 6. SPT N-VALUES SHOWN ON THIS DRAWING ARE NOT CORRECTED FOR SAMPLER SIZE OR HAMMER ENERGY. REFERENCE BORING LOGS AND GEOTECHNICAL REPORTS FOR ADDITIONAL SOIL INFORMATION.
 7. DRILL CONTRACTOR SHALL UTILIZE BUOYANCY CONTROL MEASURES (INTERNAL WATER USED FOR BALLAST) DURING PULLBACK FOR ALL BUNDLED CASINGS.

- GENERAL NOTES:**
1. ALL BURIED LINE DEPTHS ARE APPROXIMATE. PRIOR TO ANY EXCAVATION OR EXPLORATORY BORING, CONTRACTOR MUST CONTACT 811 AND ABIDE BY ALL STATE EXCAVATION REQUIREMENTS. CONTRACTOR MUST CONTACT CSX WHENEVER ON RR ROW.
 2. TETRA TECH ENGINEERING AND SURVEYING P.C. IS NOT RESPONSIBLE FOR LOCATION OF FOREIGN UTILITIES IN THIS DRAWING. THE INFORMATION SHOWN HEREON IS FURNISHED WITHOUT LIABILITY ON THE PART OF TETRA TECH ENGINEERING AND SURVEYING P.C. OR ANY DAMAGES RESULTING FROM ERRORS OR OMISSIONS THEREIN.
 3. ALL COORDINATES ARE IN NEW YORK STATE PLANE, NAD83, EAST ZONE, US FOOT.



IT IS A VIOLATION OF LAW FOR ANY PERSON, UNLESS THEY ARE ACTING UNDER THE DIRECTION OF A LICENSED PROFESSIONAL ENGINEER, ARCHITECT, LANDSCAPE ARCHITECT OR LAND SURVEYOR TO ALTER AN ITEM IN ANY WAY. IF AN ITEM BEARING THE STAMP OF A LICENSED PROFESSIONAL IS ALTERED, THE ALTERING ENGINEER, ARCHITECT, LANDSCAPE ARCHITECT OR LAND SURVEYOR SHALL STAMP THE DOCUMENT AND INCLUDE THE NOTATION "ALTERED BY" FOLLOWED BY THEIR SIGNATURE, THE DATE OF SUCH ALTERATION, AND A SPECIFIC DESCRIPTION OF THE ALTERATION.

No.	DATE	SUBMITTAL / REVISION DESCRIPTION	DB	APP
D	03/17/2023	FINAL SUBMISSION	MRS	EJK
C	01/24/2023	DRAFT FINAL SUBMISSION	MRS	EJK
B	11/16/2022	PRELIMINARY DRAFT FINAL SUBMISSION	MRS	EJK
A	04/29/2022	60% DESIGN SUBMISSION	MRS	EJK

CHAMPLAIN HUDSON POWER EXPRESS
SEGMENT 11 (PACKAGE 7A)- CSX: CATSKILL
PLAN AND PROFILE - HDD 123
PRIVATE PLANT CROSSING - CONDUIT 2
GREENE COUNTY, NY

KIEWIT PROJECT NO. 21162
TT PROJECT NO. 204-3701
DRAWING NO. C-323.2

DRAWN BY:	DESIGNED BY:	APPROVED BY:	SCALE	AS SHOWN	DATE
MRS	AMC	EJK	REV. NO.	DATE	03/17/2023

