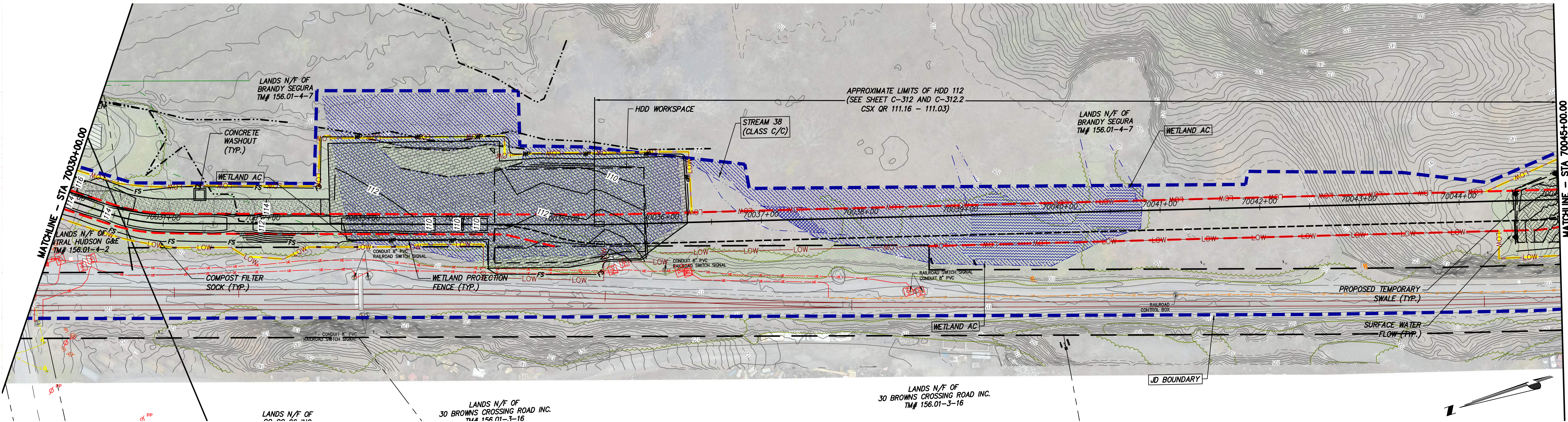
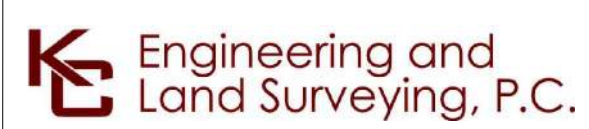
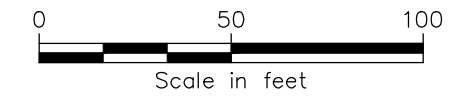


File: P:\120174-CHPE\CABLE_INSTALL-KEWIT\60_CAD\20_ENGINEERING_CAD_FILES\PACKAGE_7A\NY_ENVIRONMENTAL_(BROSON_CONTROL)\01_KCE\SHEET_FILES\21162_7A_C_401-406.DWG. Saved: 3/15/2023 3:56:01 PM Plotted: 3/15/2023 5:00:35 PM Current User: Andrew Tracey LastSavedBy: blam



STA. 70030+00.00 TO STA. 70045+00.00 PLAN VIEW
SCALE: 1" = 50'



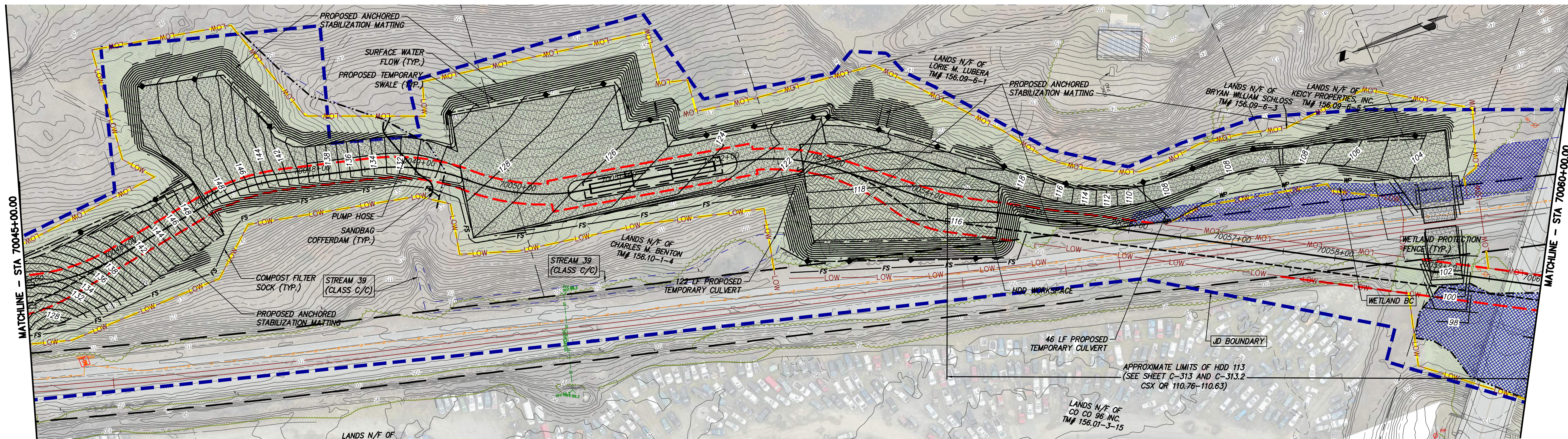
IT IS A VIOLATION OF LAW FOR ANY PERSON, UNLESS THEY ARE ACTING UNDER THE DIRECTION OF A LICENSED PROFESSIONAL ENGINEER, ARCHITECT, LANDSCAPE ARCHITECT OR LAND SURVEYOR TO ALTER AN ITEM IN ANY WAY, IF AN ITEM BEARING THE STAMP OF A LICENSED PROFESSIONAL IS ALTERED. THE ALTERING ENGINEER, ARCHITECT, LANDSCAPE ARCHITECT OR LAND SURVEYOR SHALL STAMP THE DOCUMENT AND INCLUDE THE NOTATION "ALTERED BY" FOLLOWED BY THEIR SIGNATURE, THE DATE OF SUCH ALTERATION, AND A SPECIFIC DESCRIPTION OF THE ALTERATION.

No.	DATE	SUBMITTAL / REVISION DESCRIPTION	DB	APP
F	03/17/2023	FINAL SUBMISSION	BL	JL
E	01/24/2023	DRAFT FINAL SUBMISSION	RB	JL
D	11/16/2022	PRELIMINARY DRAFT FINAL SUBMISSION	RB	JL
C	04/29/2022	60% DESIGN SUBMISSION	RB	JL
B	03/22/2022	PRELIMINARY DESIGN DEVELOPMENT	BV	TK
A	02/14/2022	PRELIMINARY PROGRESS	BV	TK

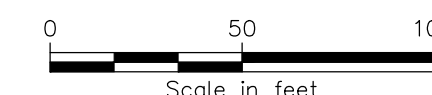
CHAMPLAIN HUDSON POWER EXPRESS
 SEGMENT 11 (PACKAGE 7A) - CSX: CATSKILL
EROSION AND SEDIMENT CONTROL PLAN
 STA. 70030+00.00 TO STA. 70045+00.00

DRAWN BY: BL DESIGNED BY: SL APPROVED BY: JL SCALE AS SHOWN DATE 03/17/2023
 REV. NO. F SH. NO. OF

KIEWIT PROJECT NO.	21162
KC PROJECT NO.	120174
DRAWING NO.	C-403

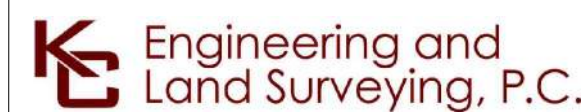


STA. 70045+00.00 TO STA. 70060+00.00 PLAN VIEW
 SCALE: 1" = 50'



A

B



IT IS A VIOLATION OF LAW FOR ANY PERSON, UNLESS THEY ARE ACTING UNDER THE DIRECTION OF A LICENSED PROFESSIONAL ENGINEER, ARCHITECT, LANDSCAPE ARCHITECT OR LAND SURVEYOR TO ALTER AN ITEM IN ANY WAY. IF AN ITEM BEARING THE STAMP OF A LICENSED PROFESSIONAL IS ALTERED, THE ALTERING ENGINEER, ARCHITECT, LANDSCAPE ARCHITECT OR LAND SURVEYOR SHALL STAMP THE DOCUMENT AND INCLUDE THE NOTATION "ALTERED BY" FOLLOWED BY THEIR SIGNATURE, THE DATE OF SUCH ALTERATION, AND A SPECIFIC DESCRIPTION OF THE ALTERATION.

No.	DATE	SUBMITTAL / REVISION DESCRIPTION	DB	APP
F	03/17/2023	FINAL SUBMISSION	BL	JL
E	01/24/2023	DRAFT FINAL SUBMISSION	RB	JL
D	11/16/2022	PRELIMINARY DRAFT FINAL SUBMISSION	RB	JL
C	04/29/2022	60% DESIGN SUBMISSION	RB	JL
B	03/22/2022	PRELIMINARY DESIGN DEVELOPMENT	BV	TK
A	02/14/2022	PRELIMINARY PROGRESS	BV	TK

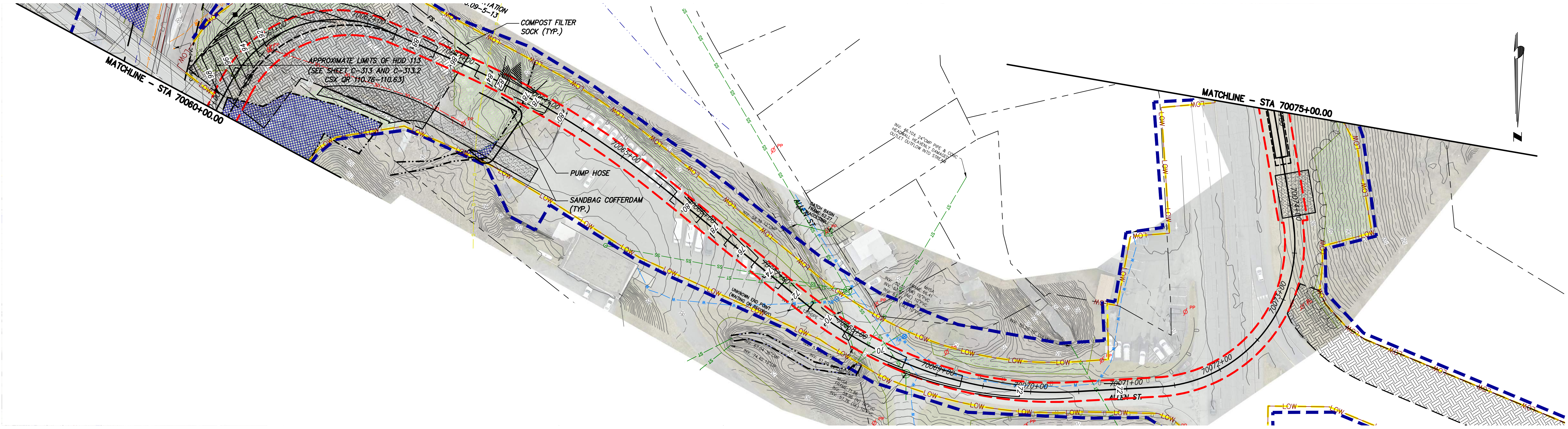
CHAMPLAIN HUDSON POWER EXPRESS
 SEGMENT 11 (PACKAGE 7A) - CSX: CATSKILL
 EROSION AND SEDIMENT CONTROL PLAN
 STA. 70045+00.00 TO STA. 70060+00.00

KIEWIT PROJECT NO.	21162
KC PROJECT NO.	120174
DRAWING NO.	C-404
DATE	03/17/2023
SH.NO.	OF

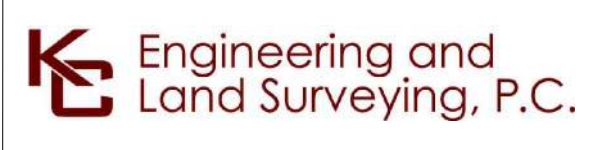
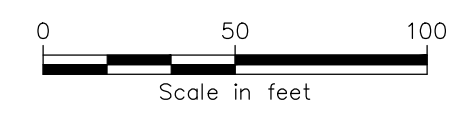
DRAWN BY: BL DESIGNED BY: SL APPROVED BY: JL SCALE AS SHOWN DATE 03/17/2023
 REV. NO. F SH.NO. OF

File: P:\202074-CHPE-CABLE-INSTALL-KIEWIT\60_CAD\20_ENGINEERING_CAD_FILES\PACKAGE_7A\NY_ENVIRONMENTAL_(BROSON_CONTROL)\01_KCE\SHEET_FILES\21162_7A_C_401-406.DWG Saved: 3/15/2023 3:56:01 PM Plotted: 3/15/2023 5:05:06 PM Current User: Andrew Tracey LastSavedBy: blom

File: P:\2020\74-CHPE\CABLE_INSTALL\KIEWIT\60_CAD\20_ENGINEERING_CAD_FILES\PACKAGE_7A\NY_ENVIRONMENTAL_(BROSON_CONTROL)\01_KCE\SHEET_FILES\21162_7A_C_401-406.DWG Saved: 3/15/2023 3:56:01 PM Plotted: 3/15/2023 5:09:33 PM Current User: Andrew Tracy LastSavedBy: blam



STA. 70060+00.00 TO STA. 70075+00.00 PLAN VIEW
 SCALE: 1" = 50'



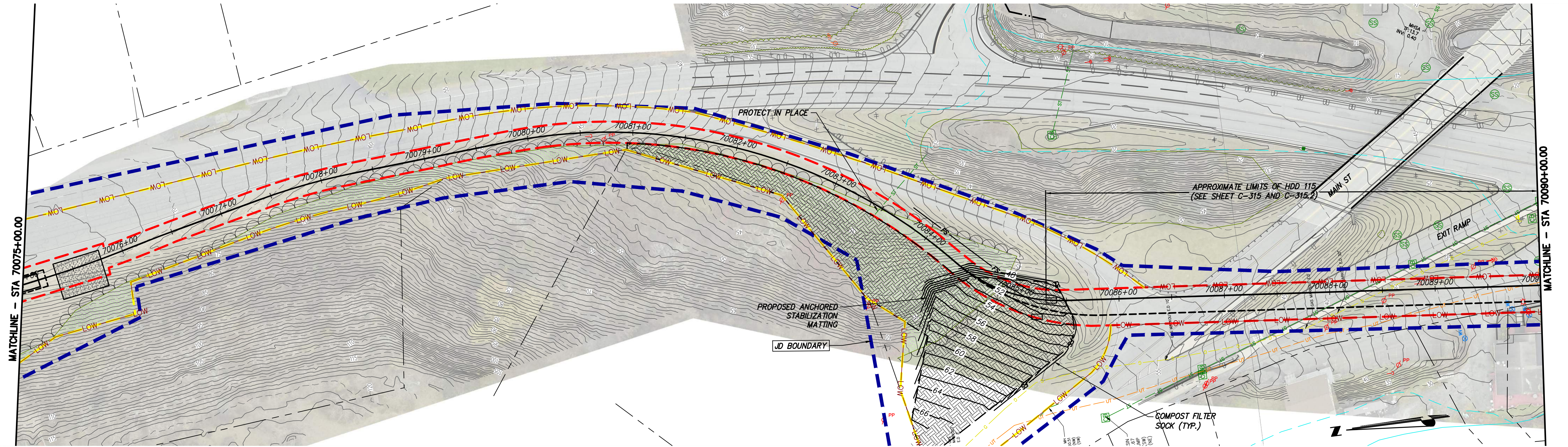
IT IS A VIOLATION OF LAW FOR ANY PERSON, UNLESS THEY ARE ACTING UNDER THE DIRECTION OF A LICENSED PROFESSIONAL ENGINEER, ARCHITECT, LANDSCAPE ARCHITECT OR LAND SURVEYOR TO ALTER AN ITEM IN ANY WAY, IF AN ITEM BEARING THE STAMP OF A LICENSED PROFESSIONAL IS ALTERED. THE ALTERING ENGINEER, ARCHITECT, LANDSCAPE ARCHITECT OR LAND SURVEYOR SHALL STAMP THE DOCUMENT AND INCLUDE THE NOTATION "ALTERED BY" FOLLOWED BY THEIR SIGNATURE, THE DATE OF SUCH ALTERATION, AND A SPECIFIC DESCRIPTION OF THE ALTERATION.

No.	DATE	SUBMITTAL / REVISION DESCRIPTION	DB	APP
F	03/17/2023	FINAL SUBMISSION	BL	JL
E	01/24/2023	DRAFT FINAL SUBMISSION	RB	JL
D	11/16/2022	PRELIMINARY DRAFT FINAL SUBMISSION	RB	JL
C	04/29/2022	60% DESIGN SUBMISSION	RB	JL
B	03/22/2022	PRELIMINARY DESIGN DEVELOPMENT	BV	TK
A	02/14/2022	PRELIMINARY PROGRESS	BV	TK

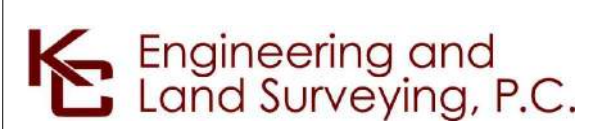
CHAMPLAIN HUDSON POWER EXPRESS
 SEGMENT 11 (PACKAGE 7A) - CSX: CATSKILL
EROSION AND SEDIMENT CONTROL PLAN
 STA. 70060+00.00 TO STA. 70075+00.00

KIEWIT PROJECT NO.	21162
KC PROJECT NO.	120174
DRAWING NO.	C-405
DRAWN BY:	BL
DESIGNED BY:	SL
APPROVED BY:	JL
SCALE	AS SHOWN
REV. NO.	F
DATE	03/17/2023
SH. NO.	11 OF

File: P:\2107174-CHPE-CABLE-INSTALL-KEWIT\60_CAD\20_ENGINEERING_CAD_FILES\PACKAGE_7A\NY_ENVIRONMENTAL_(BROSON_CONTROL)\01_KCE\SHEET_FILES\21162_7A_C_401-405.DWG Saved: 3/15/2023 3:56:01 PM Plotted: 3/15/2023 5:44:04 PM Current User: Andrew Tracey LastSavedBy: blam



STA. 70075+00.00 TO STA. 70090+00.00 PLAN VIEW
SCALE: 1" = 50'



IT IS A VIOLATION OF LAW FOR ANY PERSON, UNLESS THEY ARE ACTING UNDER THE DIRECTION OF A LICENSED PROFESSIONAL ENGINEER, ARCHITECT, LANDSCAPE ARCHITECT OR LAND SURVEYOR TO ALTER AN ITEM IN ANY WAY. IF AN ITEM BEARING THE STAMP OF A LICENSED PROFESSIONAL IS ALTERED, THE ALTERING ENGINEER, ARCHITECT, LANDSCAPE ARCHITECT OR LAND SURVEYOR SHALL STAMP THE DOCUMENT AND INCLUDE THE NOTATION "ALTERED BY" FOLLOWED BY THEIR SIGNATURE, THE DATE OF SUCH ALTERATION, AND A SPECIFIC DESCRIPTION OF THE ALTERATION.

No.	DATE	SUBMITTAL / REVISION DESCRIPTION	DB	APP
F	03/17/2023	FINAL SUBMISSION	BL	JL
E	01/24/2023	DRAFT FINAL SUBMISSION	RB	JL
D	11/16/2022	PRELIMINARY DRAFT FINAL SUBMISSION	RB	JL
C	04/29/2022	60% DESIGN SUBMISSION	RB	JL
B	03/22/2022	PRELIMINARY DESIGN DEVELOPMENT	BV	TK
A	02/14/2022	PRELIMINARY PROGRESS	BV	TK

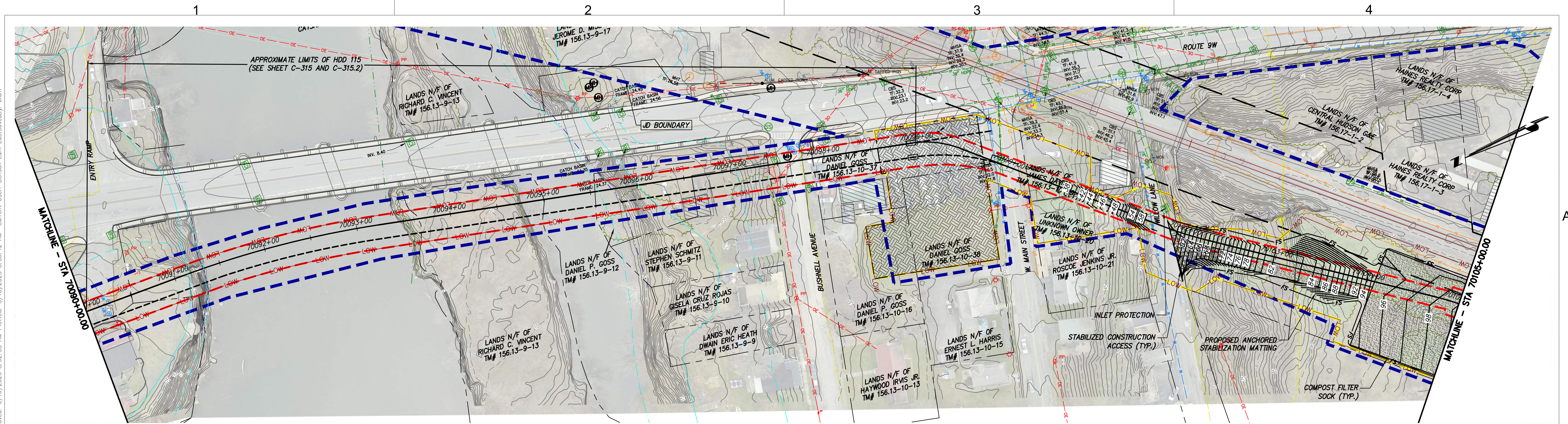
CHAMPLAIN HUDSON POWER EXPRESS
 SEGMENT 11 (PACKAGE 7A) - CSX: CATSKILL
EROSION AND SEDIMENT CONTROL PLAN
 STA. 70075+00.00 TO STA. 70090+00.00

DRAWN BY: BL DESIGNED BY: SL APPROVED BY: JL SCALE AS SHOWN DATE 03/17/2023
 REV. NO. F SH. NO. OF

KIEWIT PROJECT NO.	21162
KC PROJECT NO.	120174
DRAWING NO.	C-405.1

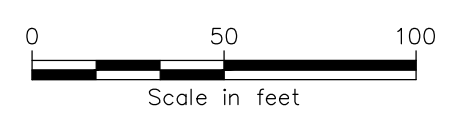
A

B

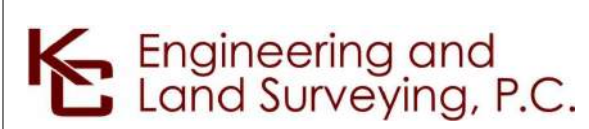


STA. 70090+00.00 TO STA. 70105+00.00 PLAN VIEW

SCALE: 1" = 50'



File: P:\120174-CHPE\CABLE_INSTALL\KIEWIT\60_CAD\20_ENGINEERING_CAD_FILES\PACKAGE_7A\NY_ENVIRONMENTAL_(BROSON_CONTROL)\01_KCE\SHEET_FILES\21162_7A_C_401-406.DWG Saved: 3/16/2023 8:32:33 AM Plotted: 3/16/2023 8:38:42 AM Current User: Benson Lam LastSavedBy: blm



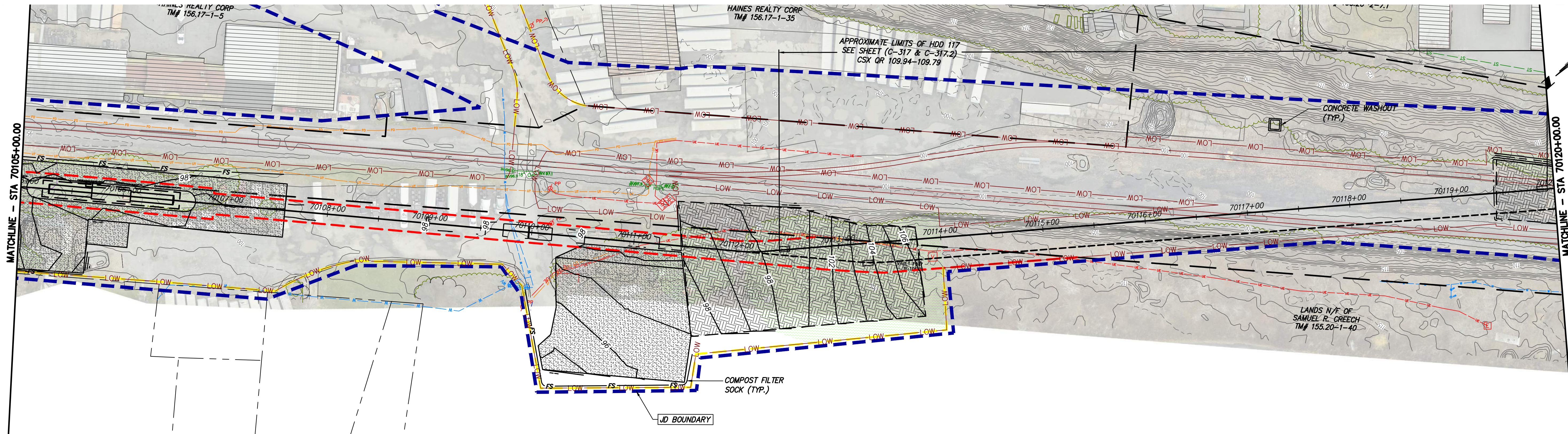
IT IS A VIOLATION OF LAW FOR ANY PERSON, UNLESS THEY ARE ACTING UNDER THE DIRECTION OF A LICENSED PROFESSIONAL ENGINEER, ARCHITECT, LANDSCAPE ARCHITECT OR LAND SURVEYOR TO ALTER AN ITEM IN ANY WAY, IF AN ITEM BEARING THE STAMP OF A LICENSED PROFESSIONAL IS ALTERED. THE ALTERING ENGINEER, ARCHITECT, LANDSCAPE ARCHITECT OR LAND SURVEYOR SHALL STAMP THE DOCUMENT AND INCLUDE THE NOTATION "ALTERED BY" FOLLOWED BY THEIR SIGNATURE, THE DATE OF SUCH ALTERATION, AND A SPECIFIC DESCRIPTION OF THE ALTERATION.

No.	DATE	SUBMITTAL / REVISION DESCRIPTION	DB	APP
F	03/17/2023	FINAL SUBMISSION	BL	JL
E	01/24/2023	DRAFT FINAL SUBMISSION	RB	JL
D	11/16/2022	PRELIMINARY DRAFT FINAL SUBMISSION	RB	JL
C	04/29/2022	60% DESIGN SUBMISSION	RB	JL
B	03/22/2022	PRELIMINARY DESIGN DEVELOPMENT	BV	TK
A	02/14/2022	PRELIMINARY PROGRESS	BV	TK

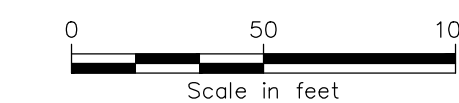
CHAMPLAIN HUDSON POWER EXPRESS
 SEGMENT 11 (PACKAGE 7A) - CSX: CATSKILL
 EROSION AND SEDIMENT CONTROL PLAN
 STA. 70090+00.00 TO STA. 70105+00.00

DRAWN BY: BL DESIGNED BY: SL APPROVED BY: JL SCALE AS SHOWN DATE 03/17/2023
 REV. NO. F SH. NO. OF

KIEWIT PROJECT NO.	21162
KC PROJECT NO.	120174
DRAWING NO.	C-406

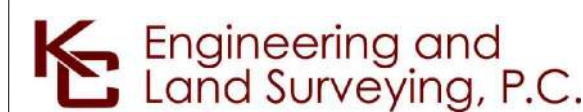


STA. 70105+00.00 TO STA. 70120+00.00 PLAN VIEW
 SCALE: 1" = 50'



A

B



IT IS A VIOLATION OF LAW FOR ANY PERSON, UNLESS THEY ARE ACTING UNDER THE DIRECTION OF A LICENSED PROFESSIONAL ENGINEER, ARCHITECT, LANDSCAPE ARCHITECT OR LAND SURVEYOR TO ALTER AN ITEM IN ANY WAY. IF AN ITEM BEARING THE STAMP OF A LICENSED PROFESSIONAL IS ALTERED, THE ALTERING ENGINEER, ARCHITECT, LANDSCAPE ARCHITECT OR LAND SURVEYOR SHALL STAMP THE DOCUMENT AND INCLUDE THE NOTATION "ALTERED BY" FOLLOWED BY THEIR SIGNATURE, THE DATE OF SUCH ALTERATION, AND A SPECIFIC DESCRIPTION OF THE ALTERATION.

No.	DATE	SUBMITTAL / REVISION DESCRIPTION	DB	APP
F	03/17/2023	FINAL SUBMISSION	BL	JL
E	01/24/2023	DRAFT FINAL SUBMISSION	RB	JL
D	11/16/2022	PRELIMINARY DRAFT FINAL SUBMISSION	RB	JL
C	04/29/2022	60% DESIGN SUBMISSION	RB	JL
B	03/22/2022	PRELIMINARY DESIGN DEVELOPMENT	BV	TK
A	02/14/2022	PRELIMINARY PROGRESS	BV	TK

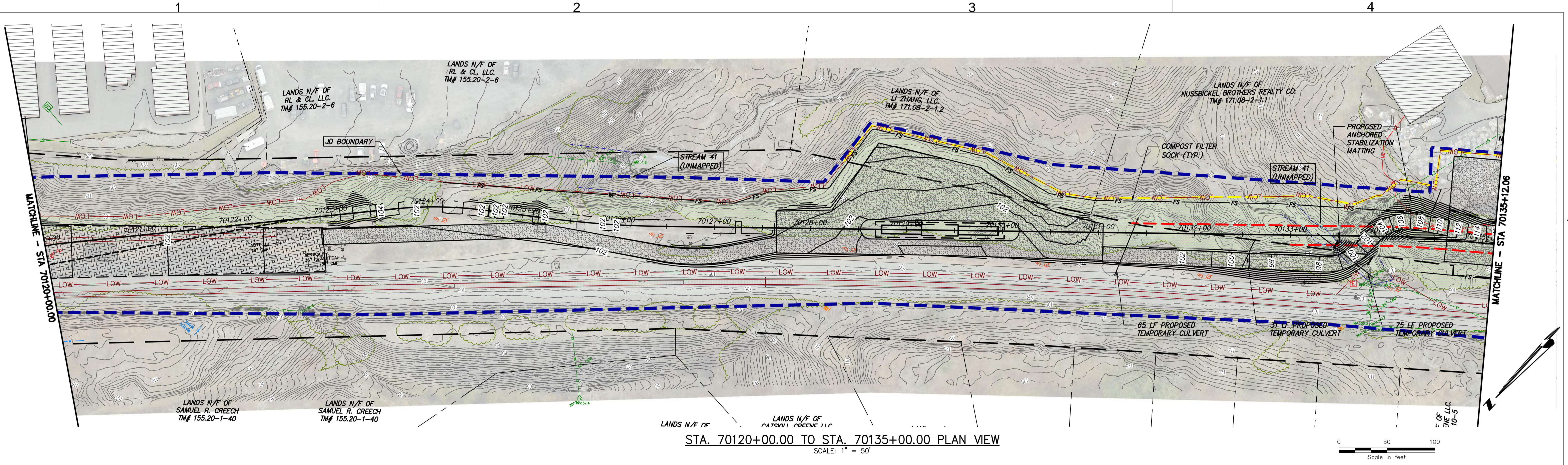
CHAMPLAIN HUDSON POWER EXPRESS
 SEGMENT 11 (PACKAGE 7A) - CSX: CATSKILL
 EROSION AND SEDIMENT CONTROL PLAN
 STA. 70105+00.00 TO STA. 70120+00.00

KIEWIT PROJECT NO.	21162
KC PROJECT NO.	120174
DRAWING NO.	C-407
DATE	03/17/2023
OF	

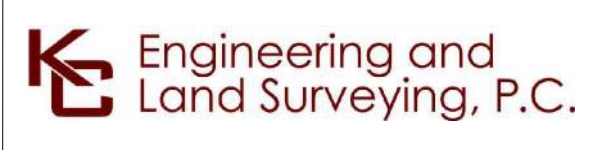
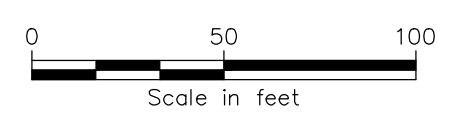
DRAWN BY: BL DESIGNED BY: SL APPROVED BY: JL SCALE AS SHOWN DATE 03/17/2023
 REV. NO. F SH. NO. OF

File: P:\120174-CHPE-INSTALL-KEWIT\60_CAD\20_ENGINEERING_CAD_FILES\PACKAGE_7A\NY_ENVIRONMENTAL_(BROSON_CONTROL)\01_KCE\SHEET_FILES\21162_7A_C_401-408.DWG Saved: 3/15/2023 3:56:01 PM Plotted: 3/15/2023 5:23:09 PM Current User: Andrew Tracey LastSavedBy: blam

File: P:\2107174-CHPE-INSTALL-KEWIT\60_CAD\20_ENGINEERING_CAD_FILES\PACKAGE_7A\NY_ENVIRONMENTAL_(BROSON_CONTROL)\01_KCE\SHEET_FILES\21162_7A_C_401-408.DWG Saved: 3/15/2023 3:56:01 PM Plotted: 3/15/2023 5:27:44 PM Current User: Andrew Tracy LastSavedBy: blam



STA. 70120+00.00 TO STA. 70135+00.00 PLAN VIEW
SCALE: 1" = 50'



IT IS A VIOLATION OF LAW FOR ANY PERSON, UNLESS THEY ARE ACTING UNDER THE DIRECTION OF A LICENSED PROFESSIONAL ENGINEER, ARCHITECT, LANDSCAPE ARCHITECT OR LAND SURVEYOR TO ALTER AN ITEM IN ANY WAY, IF AN ITEM BEARING THE STAMP OF A LICENSED PROFESSIONAL IS ALTERED. THE ALTERING ENGINEER, ARCHITECT, LANDSCAPE ARCHITECT OR LAND SURVEYOR SHALL STAMP THE DOCUMENT AND INCLUDE THE NOTATION "ALTERED BY" FOLLOWED BY THEIR SIGNATURE, THE DATE OF SUCH ALTERATION, AND A SPECIFIC DESCRIPTION OF THE ALTERATION.

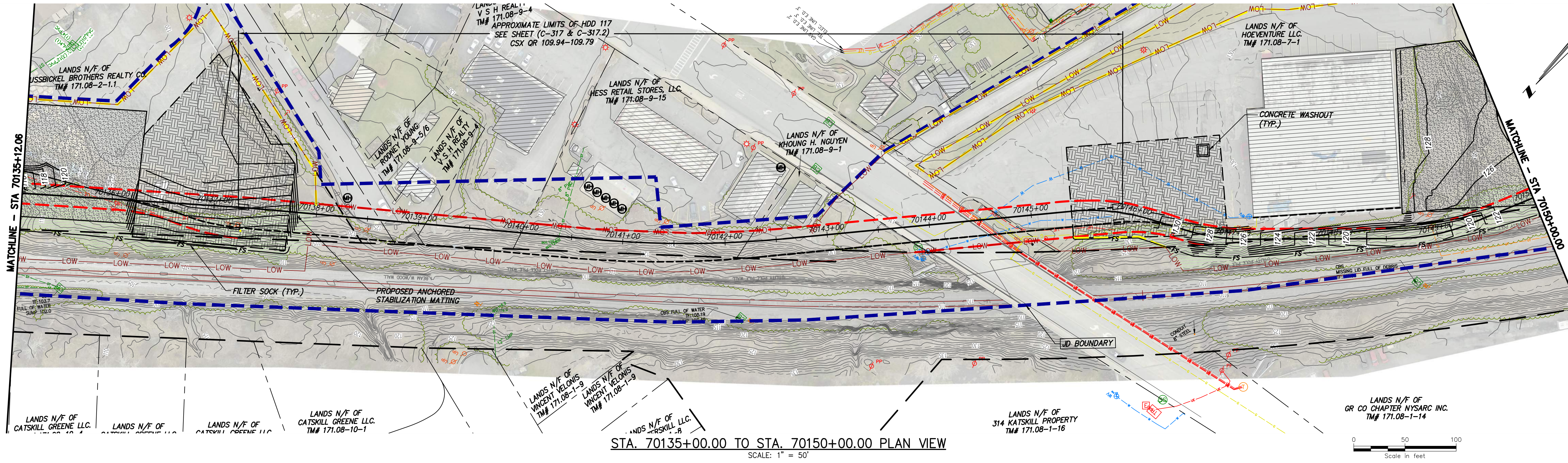
No.	DATE	SUBMITTAL / REVISION DESCRIPTION	DB	APP
F	03/17/2023	FINAL SUBMISSION	BL	JL
E	01/24/2023	DRAFT FINAL SUBMISSION	RB	JL
D	11/16/2022	PRELIMINARY DRAFT FINAL SUBMISSION	RB	JL
C	04/29/2022	60% DESIGN SUBMISSION	RB	JL
B	03/22/2022	PRELIMINARY DESIGN DEVELOPMENT	BV	TK
A	02/14/2022	PRELIMINARY PROGRESS	BV	TK

CHAMPLAIN HUDSON POWER EXPRESS
 SEGMENT 11 (PACKAGE 7A) - CSX: CATSKILL
EROSION AND SEDIMENT CONTROL PLAN
 STA. 70120+00.00 TO STA. 70135+00.00

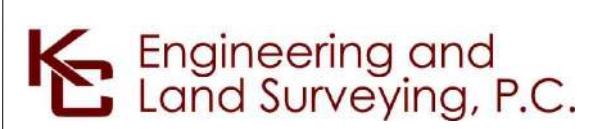
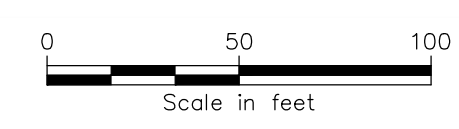
DRAWN BY: BL DESIGNED BY: SL APPROVED BY: JL SCALE AS SHOWN DATE 03/17/2023
 REV. NO. F SH. NO. OF

KIEWIT PROJECT NO.	21162
KC PROJECT NO.	120174
DRAWING NO.	C-407.1

File: P:\2020\74-CHPE-INSTALL-KEWIT\60_CAD\20_ENGINEERING_CAD_FILES\PACKAGE_7A\NY_ENVIRONMENTAL_(BROSON_CONTROL)\01_KCE\SHEET_FILES\21162_7A_C_401-408.DWG, Saved: 3/15/2023 3:56:01 PM, Plotted: 3/15/2023 5:22:14 PM, Current User: Andrew Tracey, LastSavedBy: blom



STA. 70135+00.00 TO STA. 70150+00.00 PLAN VIEW
SCALE: 1" = 50'



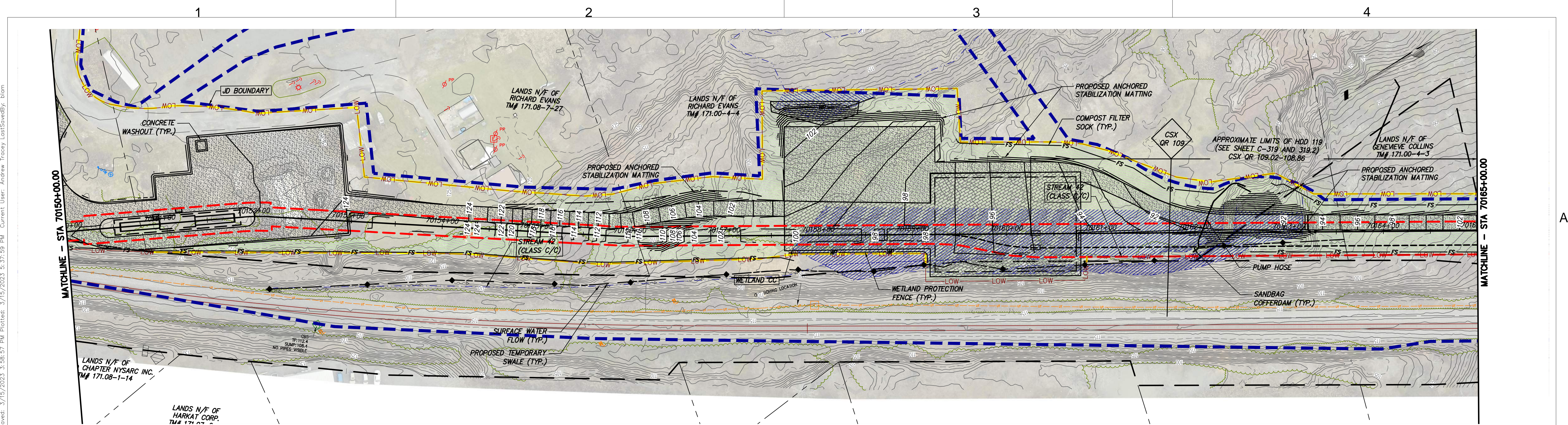
IT IS A VIOLATION OF LAW FOR ANY PERSON, UNLESS THEY ARE ACTING UNDER THE DIRECTION OF A LICENSED PROFESSIONAL ENGINEER, ARCHITECT, LANDSCAPE ARCHITECT OR LAND SURVEYOR TO ALTER AN ITEM IN ANY WAY, IF AN ITEM BEARING THE STAMP OF A LICENSED PROFESSIONAL IS ALTERED. THE ALTERING ENGINEER, ARCHITECT, LANDSCAPE ARCHITECT OR LAND SURVEYOR SHALL STAMP THE DOCUMENT AND INCLUDE THE NOTATION "ALTERED BY" FOLLOWED BY THEIR SIGNATURE, THE DATE OF SUCH ALTERATION, AND A SPECIFIC DESCRIPTION OF THE ALTERATION.

No.	DATE	SUBMITTAL / REVISION DESCRIPTION	DB	APP
F	03/17/2023	FINAL SUBMISSION	BL	JL
E	01/24/2023	DRAFT FINAL SUBMISSION	RB	JL
D	11/16/2022	PRELIMINARY DRAFT FINAL SUBMISSION	RB	JL
C	04/29/2022	60% DESIGN SUBMISSION	RB	JL
B	03/22/2022	PRELIMINARY DESIGN DEVELOPMENT	BV	TK
A	02/14/2022	PRELIMINARY PROGRESS	BV	TK

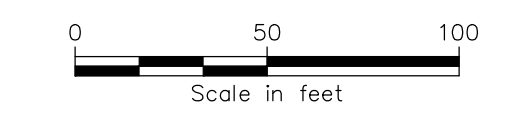
CHAMPLAIN HUDSON POWER EXPRESS
 SEGMENT 11 (PACKAGE 7A) - CSX: CATSKILL
 EROSION AND SEDIMENT CONTROL PLAN
 STA. 70135+00.00 TO STA. 70150+00.00

DRAWN BY: BL DESIGNED BY: SL APPROVED BY: JL SCALE AS SHOWN DATE 03/17/2023
 REV. NO. F SH. NO. OF

KIEWIT PROJECT NO.	21162
KC PROJECT NO.	120174
DRAWING NO.	C-408



STA. 70150+00.00 TO STA. 70165+00.00 PLAN VIEW
SCALE: 1" = 50'



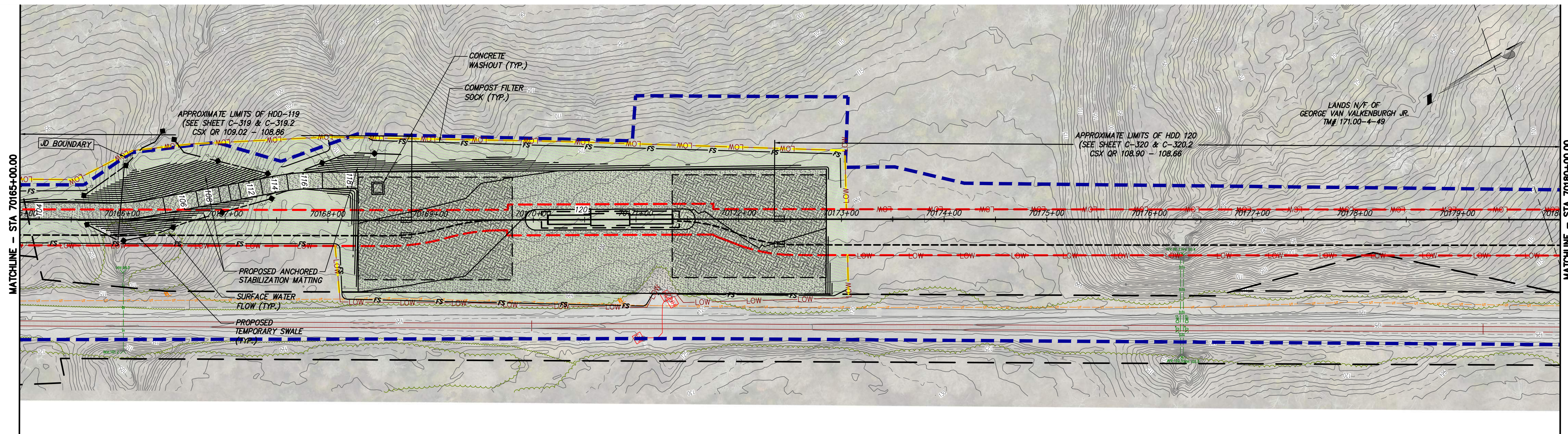
IT IS A VIOLATION OF LAW FOR ANY PERSON, UNLESS THEY ARE ACTING UNDER THE DIRECTION OF A LICENSED PROFESSIONAL ENGINEER, ARCHITECT, LANDSCAPE ARCHITECT OR LAND SURVEYOR TO ALTER AN ITEM IN ANY WAY, IF AN ITEM BEARING THE STAMP OF A LICENSED PROFESSIONAL IS ALTERED. THE ALTERING ENGINEER, ARCHITECT, LANDSCAPE ARCHITECT OR LAND SURVEYOR SHALL STAMP THE DOCUMENT AND INCLUDE THE NOTATION "ALTERED BY" FOLLOWED BY THEIR SIGNATURE, THE DATE OF SUCH ALTERATION, AND A SPECIFIC DESCRIPTION OF THE ALTERATION.

No.	DATE	SUBMITTAL / REVISION DESCRIPTION	DB	APP
F	03/17/2023	FINAL SUBMISSION	BL	JL
E	01/24/2023	DRAFT FINAL SUBMISSION	RB	JL
D	11/16/2022	PRELIMINARY DRAFT FINAL SUBMISSION	RB	JL
C	04/29/2022	60% DESIGN SUBMISSION	RB	JL
B	03/22/2022	PRELIMINARY DESIGN DEVELOPMENT	BV	TK
A	02/14/2022	PRELIMINARY PROGRESS	BV	TK

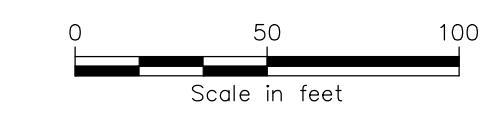
CHAMPLAIN HUDSON POWER EXPRESS
SEGMENT 11 (PACKAGE 7A) - CSX: CATSKILL
EROSION AND SEDIMENT CONTROL PLAN
STA. 70150+00.00 TO STA. 70165+00.00

KIEWIT PROJECT NO.	21162
KC PROJECT NO.	120174
DRAWING NO.	C-408.1
DATE	03/17/2023
OF	

DRAWN BY: BL DESIGNED BY: SL APPROVED BY: JL SCALE AS SHOWN DATE 03/17/2023
REV. NO. F SH. NO. OF

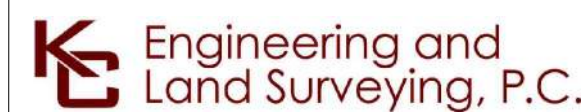


STA. 70165+00.00 TO STA. 70180+00.00 PLAN VIEW
SCALE: 1" = 50'



A

B



IT IS A VIOLATION OF LAW FOR ANY PERSON, UNLESS THEY ARE ACTING UNDER THE DIRECTION OF A LICENSED PROFESSIONAL ENGINEER, ARCHITECT, LANDSCAPE ARCHITECT OR LAND SURVEYOR TO ALTER AN ITEM IN ANY WAY, IF AN ITEM BEARING THE STAMP OF A LICENSED PROFESSIONAL IS ALTERED. THE ALTERING ENGINEER, ARCHITECT, LANDSCAPE ARCHITECT OR LAND SURVEYOR SHALL STAMP THE DOCUMENT AND INCLUDE THE NOTATION "ALTERED BY" FOLLOWED BY THEIR SIGNATURE, THE DATE OF SUCH ALTERATION, AND A SPECIFIC DESCRIPTION OF THE ALTERATION.

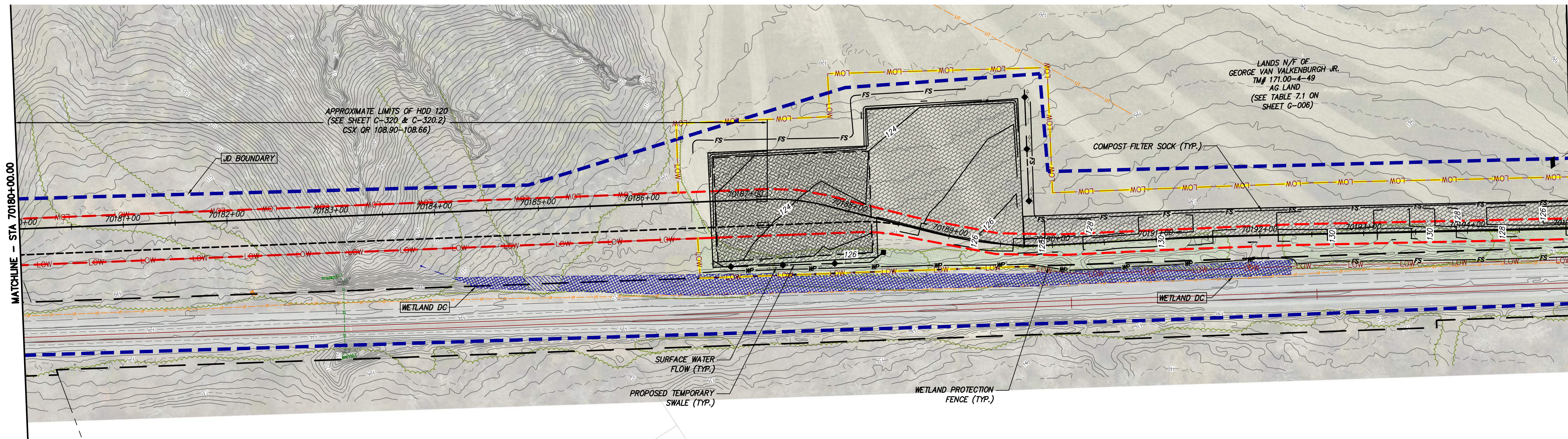
No.	DATE	SUBMITTAL / REVISION DESCRIPTION	DB	APP
F	03/17/2023	FINAL SUBMISSION	BL	JL
E	01/24/2023	DRAFT FINAL SUBMISSION	RB	JL
D	11/16/2022	PRELIMINARY DRAFT FINAL SUBMISSION	RB	JL
C	04/29/2022	60% DESIGN SUBMISSION	RB	JL
B	03/22/2022	PRELIMINARY DESIGN DEVELOPMENT	BV	TK
A	02/14/2022	PRELIMINARY PROGRESS	BV	TK

CHAMPLAIN HUDSON POWER EXPRESS
SEGMENT 11 (PACKAGE 7A) - CSX: CATSKILL
EROSION AND SEDIMENT CONTROL PLAN
STA. 70165+00.00 TO STA. 70180+00.00

KIEWIT PROJECT NO.	21162
KC PROJECT NO.	120174
DRAWING NO.	C-409
DATE	03/17/2023
SH.NO.	XX OF

DRAWN BY: BL DESIGNED BY: SL APPROVED BY: JL SCALE AS SHOWN DATE 03/17/2023
REV. NO. F SH.NO. XX OF

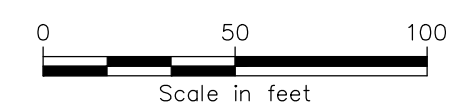
File: P:\2021\74-CHPE-CABLE-INSTALL-KIEWIT\60-CAD\20-ENGINEERING-CAD-FILES\PACKAGE_7A\NY-ENVIRONMENTAL-(BROSON_CONTROL)\01_KCE\SHEET_FILES\21162_7A_C_408-417.DWG Saved: 3/15/2023 5:42:32 PM Current User: Andrew Tracy LastSavedBy: blam



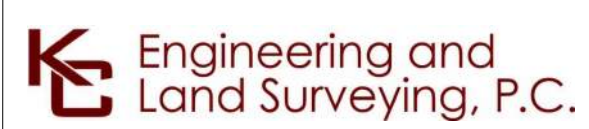
APPROXIMATE LIMITS OF HDD 120
(SEE SHEET C-320 & C-320.2)
CSX QR 108.90-108.66

LANDS N/F OF
GEORGE VAN WALKENBURGH JR.
TWP 171.00-4-49
AG LAND
(SEE TABLE 7.1 ON
SHEET G-006)

STA. 70180+00.00 TO STA. 70195+00.00 PLAN VIEW
SCALE: 1" = 50'



File: P:\2020\74-CHPE\CABLE_INSTALL\KIEWIT\60_CAD\20_ENGINEERING_CAD_FILES\PACKAGE_7A\NY_ENVIRONMENTAL_(BROSON_CONTROL)\01_KCE\SHEET_FILES\21162_7A_C_408-417.DWG. Saved: 3/15/2023 3:58:57 PM. Plotted: 3/15/2023 4:14:06 PM. Current User: Benson Lam. LastSavedBy: blam

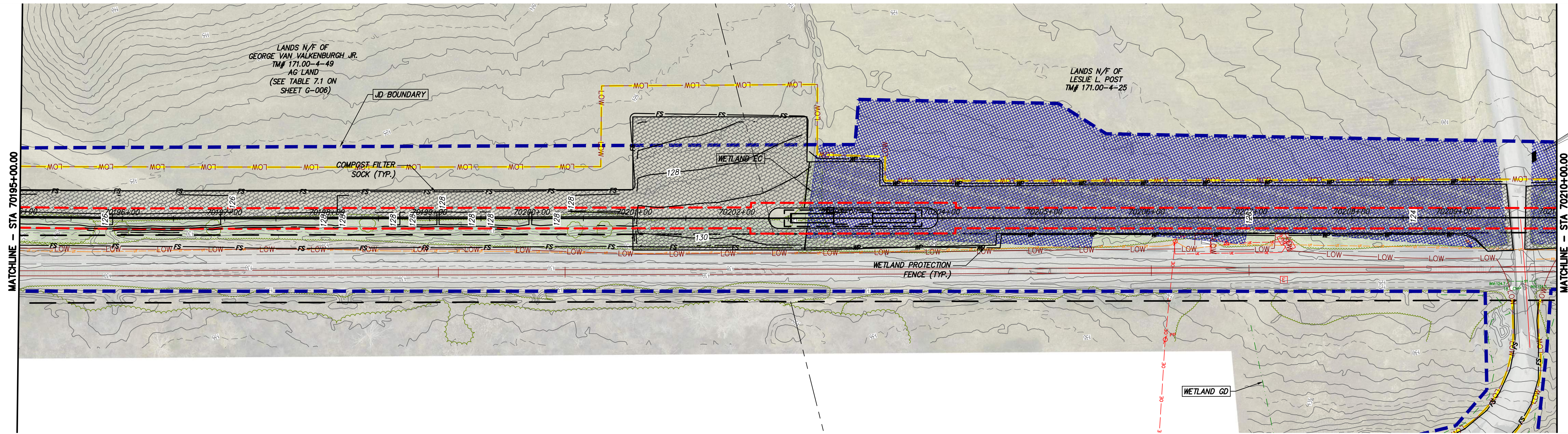


IT IS A VIOLATION OF LAW FOR ANY PERSON, UNLESS THEY ARE ACTING UNDER THE DIRECTION OF A LICENSED PROFESSIONAL ENGINEER, ARCHITECT, LANDSCAPE ARCHITECT OR LAND SURVEYOR TO ALTER AN ITEM IN ANY WAY, IF AN ITEM BEARING THE STAMP OF A LICENSED PROFESSIONAL IS ALTERED. THE ALTERING ENGINEER, ARCHITECT, LANDSCAPE ARCHITECT OR LAND SURVEYOR SHALL STAMP THE DOCUMENT AND INCLUDE THE NOTATION "ALTERED BY" FOLLOWED BY THEIR SIGNATURE, THE DATE OF SUCH ALTERATION, AND A SPECIFIC DESCRIPTION OF THE ALTERATION.

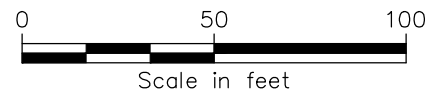
No.	DATE	SUBMITTAL / REVISION DESCRIPTION	DB	APP
F	03/17/2023	FINAL SUBMISSION	BL	JL
E	01/24/2023	DRAFT FINAL SUBMISSION	RB	JL
D	11/16/2022	PRELIMINARY DRAFT FINAL SUBMISSION	RB	JL
C	04/29/2022	60% DESIGN SUBMISSION	RB	JL
B	03/22/2022	PRELIMINARY DESIGN DEVELOPMENT	BV	TK
A	02/14/2022	PRELIMINARY PROGRESS	BV	TK

CHAMPLAIN HUDSON POWER EXPRESS
SEGMENT 11 (PACKAGE 7A) - CSX: CATSKILL
EROSION AND SEDIMENT CONTROL PLAN
STA. 70180+00.00 TO STA. 70195+00.00

KIEWIT PROJECT NO.	21162
KC PROJECT NO.	120174
DRAWING NO.	C-410
DRAWN BY:	BL
DESIGNED BY:	SL
APPROVED BY:	JL
SCALE	AS SHOWN
REV. NO.	F
DATE	03/17/2023
SH. NO.	XX OF

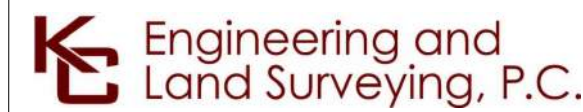


STA. 70195+00.00 TO STA. 70210+00.00 PLAN VIEW
SCALE: 1" = 50'



A

B



IT IS A VIOLATION OF LAW FOR ANY PERSON, UNLESS THEY ARE ACTING UNDER THE DIRECTION OF A LICENSED PROFESSIONAL ENGINEER, ARCHITECT, LANDSCAPE ARCHITECT OR LAND SURVEYOR TO ALTER AN ITEM IN ANY WAY, IF AN ITEM BEARING THE STAMP OF A LICENSED PROFESSIONAL IS ALTERED. THE ALTERING ENGINEER, ARCHITECT, LANDSCAPE ARCHITECT OR LAND SURVEYOR SHALL STAMP THE DOCUMENT AND INCLUDE THE NOTATION "ALTERED BY" FOLLOWED BY THEIR SIGNATURE, THE DATE OF SUCH ALTERATION, AND A SPECIFIC DESCRIPTION OF THE ALTERATION.

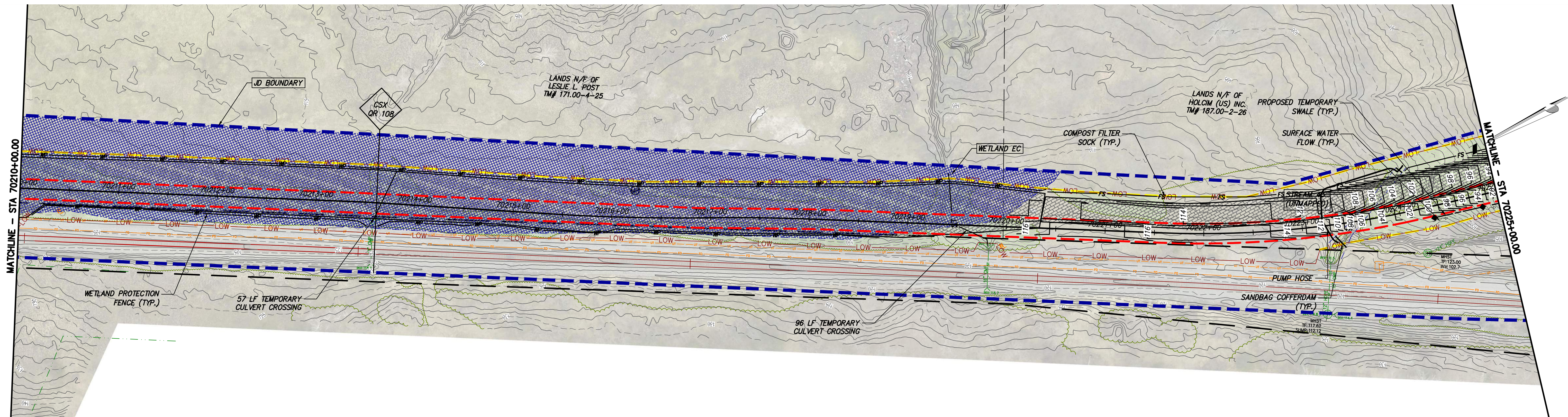
No.	DATE	SUBMITTAL / REVISION DESCRIPTION	DB	APP
F	03/17/2023	FINAL SUBMISSION	BL	JL
E	01/24/2023	DRAFT FINAL SUBMISSION	RB	JL
D	11/16/2022	PRELIMINARY DRAFT FINAL SUBMISSION	RB	JL
C	04/29/2022	60% DESIGN SUBMISSION	RB	JL
B	03/22/2022	PRELIMINARY DESIGN DEVELOPMENT	BV	TK
A	02/14/2022	PRELIMINARY PROGRESS	BV	TK

CHAMPLAIN HUDSON POWER EXPRESS
SEGMENT 11 (PACKAGE 7A) - CSX: CATSKILL
EROSION AND SEDIMENT CONTROL PLAN
STA. 70195+00.00 TO STA. 70210+00.00

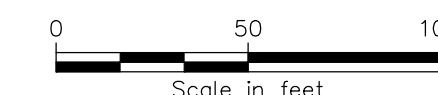
KIEWIT PROJECT NO. 21162
KC PROJECT NO. 120174
DRAWING NO. **C-411**

DRAWN BY: BL DESIGNED BY: SL APPROVED BY: JL SCALE AS SHOWN DATE 03/17/2023
REV. NO. F SH. NO. XX OF

File: P:\2023\CHPE\CABLE_INSTALL\KIEWIT\60_CAD\20_ENGINEERING_CAD_FILES\PACKAGE_7A\NY_ENVIRONMENTAL_(BROSON_CONTROL)\01_KCE\SHEET_FILES\21162_7A_C_408-417.DWG Saved: 3/15/2023 3:58:57 PM Plotted: 3/15/2023 4:18:48 PM Current User: Benson Lam LastSavedBy: blam

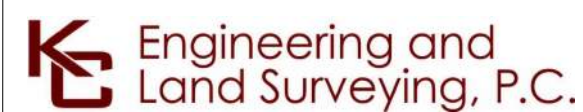


STA. 70210+00.00 TO STA. 70225+00.00 PLAN VIEW
SCALE: 1" = 50'



A

B



IT IS A VIOLATION OF LAW FOR ANY PERSON, UNLESS THEY ARE ACTING UNDER THE DIRECTION OF A LICENSED PROFESSIONAL ENGINEER, ARCHITECT, LANDSCAPE ARCHITECT OR LAND SURVEYOR TO ALTER AN ITEM IN ANY WAY, IF AN ITEM BEARING THE STAMP OF A LICENSED PROFESSIONAL IS ALTERED. THE ALTERING ENGINEER, ARCHITECT, LANDSCAPE ARCHITECT OR LAND SURVEYOR SHALL STAMP THE DOCUMENT AND INCLUDE THE NOTATION "ALTERED BY" FOLLOWED BY THEIR SIGNATURE, THE DATE OF SUCH ALTERATION, AND A SPECIFIC DESCRIPTION OF THE ALTERATION.

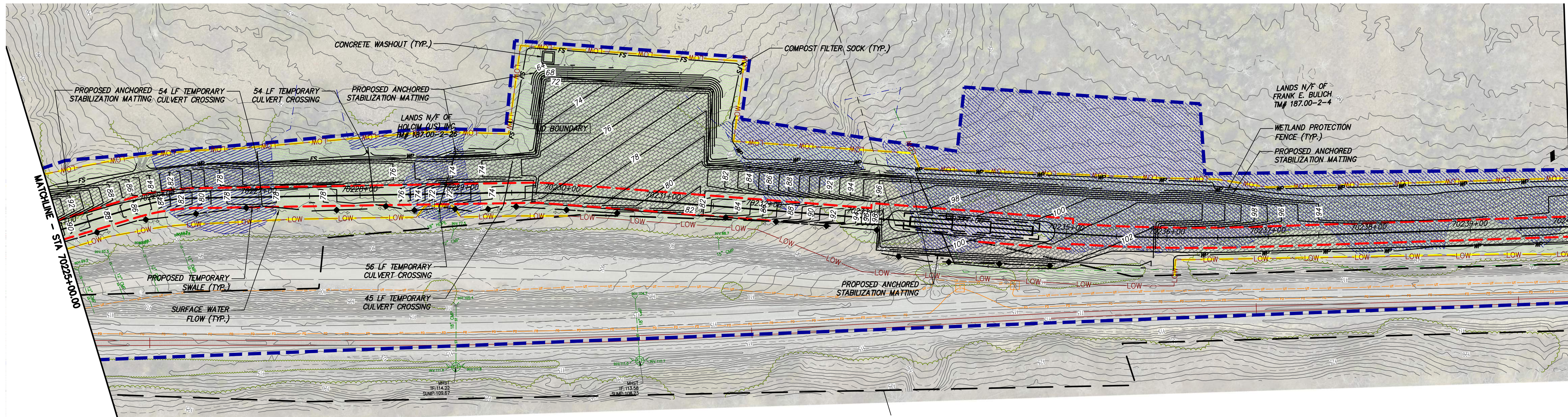
No.	DATE	SUBMITTAL / REVISION DESCRIPTION	DB	APP
F	03/17/2023	FINAL SUBMISSION	BL	JL
E	01/24/2023	DRAFT FINAL SUBMISSION	RB	JL
D	11/16/2022	PRELIMINARY DRAFT FINAL SUBMISSION	RB	JL
C	04/29/2022	60% DESIGN SUBMISSION	RB	JL
B	03/22/2022	PRELIMINARY DESIGN DEVELOPMENT	BV	TK
A	02/14/2022	PRELIMINARY PROGRESS	BV	TK

CHAMPLAIN HUDSON POWER EXPRESS
SEGMENT 11 (PACKAGE 7A) - CSX: CATSKILL
EROSION AND SEDIMENT CONTROL PLAN
STA. 70210+00.00 TO STA. 70225+00.00

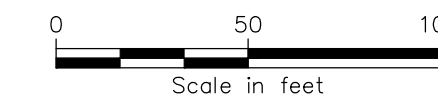
KIEWIT PROJECT NO.	21162
KC PROJECT NO.	120174
DRAWING NO.	C-412
DATE	03/17/2023
SH.NO.	XX OF

DRAWN BY: BL DESIGNED BY: SL APPROVED BY: JL SCALE AS SHOWN DATE 03/17/2023
REV. NO. F SH.NO. XX OF

File: P:\120174-CHPE-CABLE-INSTALL-KIEWIT\60_CAD\20_ENGINEERING_CAD_FILES\PACKAGE_7A\NY_ENVIRONMENTAL_(BROSON_CONTROL)\01_KCE\SHEET_FILES\21162_7A_C_408-417.DWG Saved: 3/15/2023 3:58:57 PM Plotted: 3/15/2023 4:23:32 PM Current User: Benson Lam LastSavedBy: blm

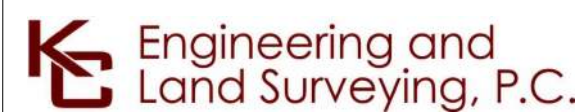


STA. 70225+00.00 TO STA. 70240+00.00 PLAN VIEW
SCALE: 1" = 50'



A

B



IT IS A VIOLATION OF LAW FOR ANY PERSON, UNLESS THEY ARE ACTING UNDER THE DIRECTION OF A LICENSED PROFESSIONAL ENGINEER, ARCHITECT, LANDSCAPE ARCHITECT OR LAND SURVEYOR TO ALTER AN ITEM IN ANY WAY, IF AN ITEM BEARING THE STAMP OF A LICENSED PROFESSIONAL IS ALTERED. THE ALTERING ENGINEER, ARCHITECT, LANDSCAPE ARCHITECT OR LAND SURVEYOR SHALL STAMP THE DOCUMENT AND INCLUDE THE NOTATION "ALTERED BY" FOLLOWED BY THEIR SIGNATURE, THE DATE OF SUCH ALTERATION, AND A SPECIFIC DESCRIPTION OF THE ALTERATION.

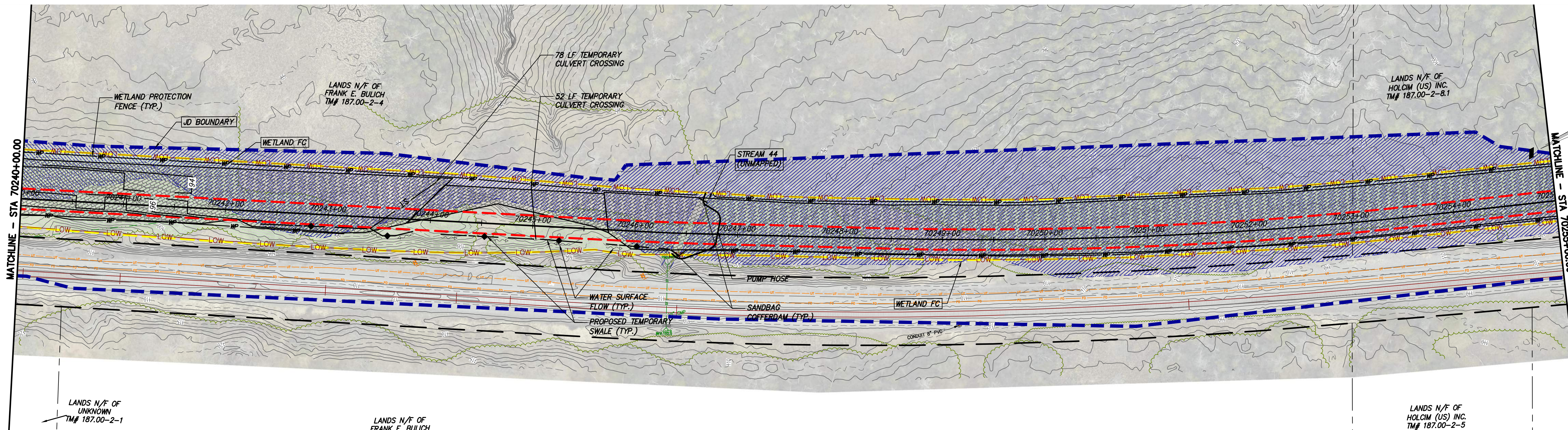
No.	DATE	SUBMITTAL / REVISION DESCRIPTION	DB	APP
F	03/17/2023	FINAL SUBMISSION	BL	JL
E	01/24/2023	DRAFT FINAL SUBMISSION	RB	JL
D	11/16/2022	PRELIMINARY DRAFT FINAL SUBMISSION	RB	JL
C	04/29/2022	60% DESIGN SUBMISSION	RB	JL
B	03/22/2022	PRELIMINARY DESIGN DEVELOPMENT	BV	TK
A	02/14/2022	PRELIMINARY PROGRESS	BV	TK

CHAMPLAIN HUDSON POWER EXPRESS
SEGMENT 11 (PACKAGE 7A) - CSX: CATSKILL
EROSION AND SEDIMENT CONTROL PLAN
STA. 70225+00.00 TO STA. 70240+00.00

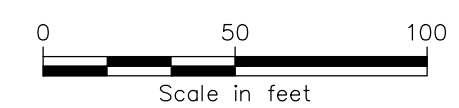
KIEWIT PROJECT NO.	21162
KC PROJECT NO.	120174
DRAWING NO.	C-413
DATE	03/17/2023
SH.NO.	XX OF

DRAWN BY: BL DESIGNED BY: SL APPROVED BY: JL SCALE AS SHOWN DATE 03/17/2023
REV. NO. F SH.NO. XX OF

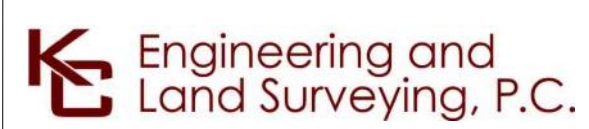
File: P:\120174-CHPE-INSTALL-KEWIT\60_CAD\20_ENGINEERING_CAD_FILES\PACKAGE_7A\NY_ENVIRONMENTAL_(BROSON_CONTROL)\01_KCE\SHEET_FILES\21162_7A_C_408-417.DWG Saved: 3/15/2023 3:58:57 PM Plotted: 3/15/2023 4:28:17 PM Current User: Benson Lam LastSavedBy: bam



STA. 70240+00.00 TO STA. 70255+00.00 PLAN VIEW
 SCALE: 1" = 50'



File: P:\2021\74-CHPE-CABLE-INSTALL-KEWIT\60_CAD\20_ENGINEERING_CAD_FILES\PACKAGE_7A\NY_ENVIRONMENTAL_(BROSON_CONTROL)\01_KCE\SHEET_FILES\21162_7A_C_408-417.DWG Saved: 3/15/2023 3:58:57 PM Plotted: 3/15/2023 4:33:01 PM Current User: Benson Lam LastSavedBy: blam

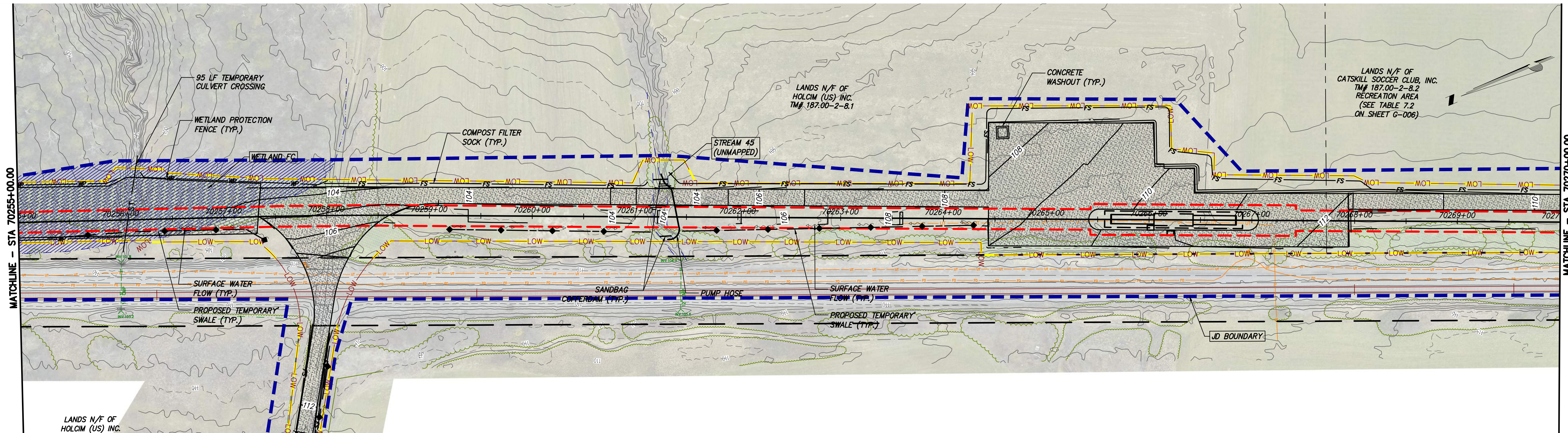


IT IS A VIOLATION OF LAW FOR ANY PERSON, UNLESS THEY ARE ACTING UNDER THE DIRECTION OF A LICENSED PROFESSIONAL ENGINEER, ARCHITECT, LANDSCAPE ARCHITECT OR LAND SURVEYOR TO ALTER AN ITEM IN ANY WAY, IF AN ITEM BEARING THE STAMP OF A LICENSED PROFESSIONAL IS ALTERED. THE ALTERING ENGINEER, ARCHITECT, LANDSCAPE ARCHITECT OR LAND SURVEYOR SHALL STAMP THE DOCUMENT AND INCLUDE THE NOTATION "ALTERED BY" FOLLOWED BY THEIR SIGNATURE, THE DATE OF SUCH ALTERATION, AND A SPECIFIC DESCRIPTION OF THE ALTERATION.

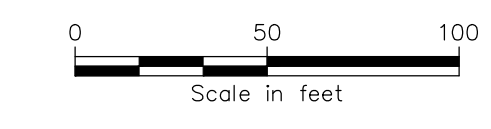
No.	DATE	SUBMITTAL / REVISION DESCRIPTION	DB	APP
F	03/17/2023	FINAL SUBMISSION	BL	JL
E	01/24/2023	DRAFT FINAL SUBMISSION	RB	JL
D	11/16/2022	PRELIMINARY DRAFT FINAL SUBMISSION	RB	JL
C	04/29/2022	60% DESIGN SUBMISSION	RB	JL
B	03/22/2022	PRELIMINARY DESIGN DEVELOPMENT	BV	TK
A	02/14/2022	PRELIMINARY PROGRESS	BV	TK

CHAMPLAIN HUDSON POWER EXPRESS
 SEGMENT 11 (PACKAGE 7A) - CSX: CATSKILL
 EROSION AND SEDIMENT CONTROL PLAN
 STA. 70240+00.00 TO STA. 70255+00.00

KIEWIT PROJECT NO.	21162
KC PROJECT NO.	120174
DRAWING NO.	C-414
DRAWN BY:	BL
DESIGNED BY:	SL
APPROVED BY:	JL
SCALE	AS SHOWN
REV. NO.	F
DATE	03/17/2023
SH. NO.	XX OF

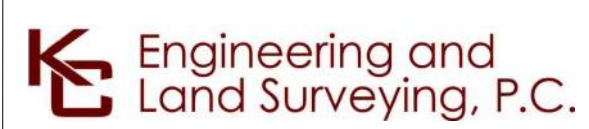


STA. 70255+00.00 TO STA. 70270+00.00 PLAN VIEW
SCALE: 1" = 50'



A

B



IT IS A VIOLATION OF LAW FOR ANY PERSON, UNLESS THEY ARE ACTING UNDER THE DIRECTION OF A LICENSED PROFESSIONAL ENGINEER, ARCHITECT, LANDSCAPE ARCHITECT OR LAND SURVEYOR TO ALTER AN ITEM IN ANY WAY. IF AN ITEM BEARING THE STAMP OF A LICENSED PROFESSIONAL IS ALTERED, THE ALTERING ENGINEER, ARCHITECT, LANDSCAPE ARCHITECT OR LAND SURVEYOR SHALL STAMP THE DOCUMENT AND INCLUDE THE NOTATION "ALTERED BY" FOLLOWED BY THEIR SIGNATURE, THE DATE OF SUCH ALTERATION, AND A SPECIFIC DESCRIPTION OF THE ALTERATION.

No.	DATE	SUBMITTAL / REVISION DESCRIPTION	DB	APP
F	03/17/2023	FINAL SUBMISSION	BL	JL
E	01/24/2023	DRAFT FINAL SUBMISSION	RB	JL
D	11/16/2022	PRELIMINARY DRAFT FINAL SUBMISSION	RB	JL
C	04/29/2022	60% DESIGN SUBMISSION	RB	JL
B	03/22/2022	PRELIMINARY DESIGN DEVELOPMENT	BV	TK
A	02/14/2022	PRELIMINARY PROGRESS	BV	TK

CHAMPLAIN HUDSON POWER EXPRESS
SEGMENT 11 (PACKAGE 7A) - CSX: CATSKILL
EROSION AND SEDIMENT CONTROL PLAN
STA. 70255+00.00 TO STA. 70270+00.00

KIEWIT PROJECT NO.	21162
KC PROJECT NO.	120174
DRAWING NO.	C-415
DATE	03/17/2023
SH.NO.	XX OF

DRAWN BY: BL DESIGNED BY: SL APPROVED BY: JL SCALE AS SHOWN DATE 03/17/2023
REV. NO. F SH.NO. XX OF

File: P:\120174-CHPE-INSTALL-KIEWIT\60-CAD\20-ENGINEERING-CAD-FILES\PACKAGE_7A\NY-ENVIRONMENTAL-(BROSON_CONTROL)\01_KCE\SHSHEET_FILES\21162_7A_C_408-417.DWG Saved: 3/15/2023 3:58:57 PM Plotted: 3/15/2023 4:37:46 PM Current User: Benson Lam LastSavedBy: blm