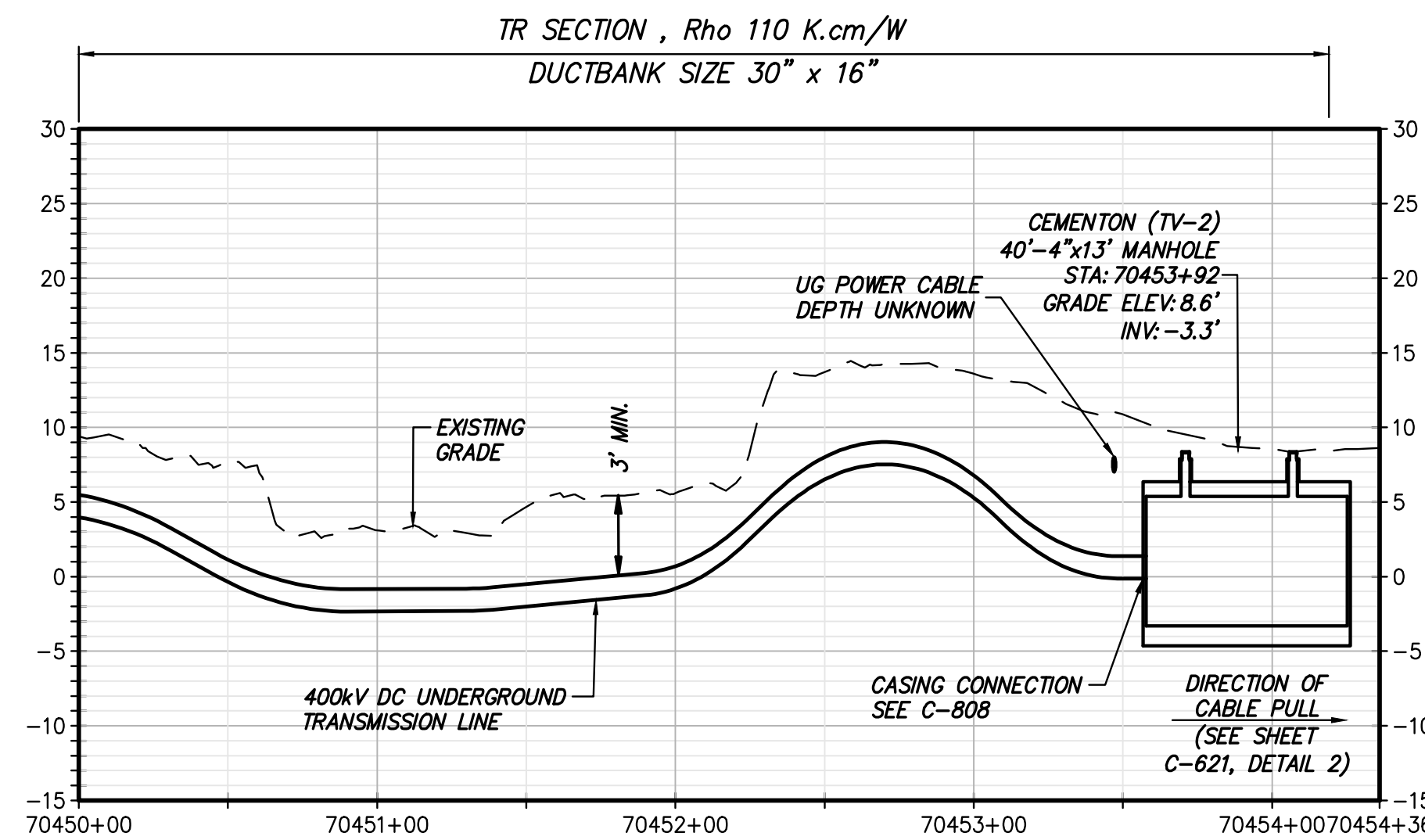
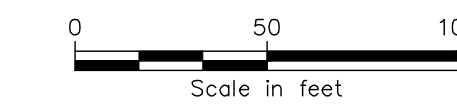


STA. 70450+00.00 TO STA. 70454+36 PLAN VIEW
SCALE: 1" = 50'



STA. 70450+00 TO STA. 70454+36 PROFILE VIEW
SCALE: H:1" = 50' V:1" = 10'



TETRA TECH ENGINEERING AND SURVEYING P.C.
(A NEW YORK PROFESSIONAL CORPORATION)

IT IS A VIOLATION OF LAW FOR ANY PERSON, UNLESS THEY ARE ACTING UNDER THE DIRECTION OF A LICENSED PROFESSIONAL ENGINEER, ARCHITECT, LANDSCAPE ARCHITECT OR LAND SURVEYOR TO ALTER AN ITEM IN ANY WAY. IF AN ITEM BEARING THE STAMP OF A LICENSED PROFESSIONAL IS ALTERED, THE ALTERING ENGINEER, ARCHITECT, LANDSCAPE ARCHITECT OR LAND SURVEYOR SHALL STAMP THE DOCUMENT AND INCLUDE THE NOTATION "ALTERED BY" FOLLOWED BY THEIR SIGNATURE, THE DATE OF SUCH ALTERATION, AND A SPECIFIC DESCRIPTION OF THE ALTERATION.

ISSUED FOR PERMITTING

No.	DATE	SUBMITTAL / REVISION DESCRIPTION	DB	APP
F	03/17/2023	FINAL SUBMISSION	RB	JL
E	01/24/2023	DRAFT FINAL SUBMISSION	RB	JL
D	11/16/2022	PRELIMINARY DRAFT FINAL SUBMISSION	RB	JL
C	04/29/2022	60% DESIGN SUBMISSION	RB	JL
B	03/22/2022	PRELIMINARY DESIGN DEVELOPMENT	BV	TK
A	02/14/2022	PRELIMINARY PROGRESS	BV	TK

**CHAMPLAIN HUDSON POWER EXPRESS
SEGMENT 11 (PACKAGE 7A) - CSX: CATSKILL**
STA. 70450+00.00 TO STA. 70454+36

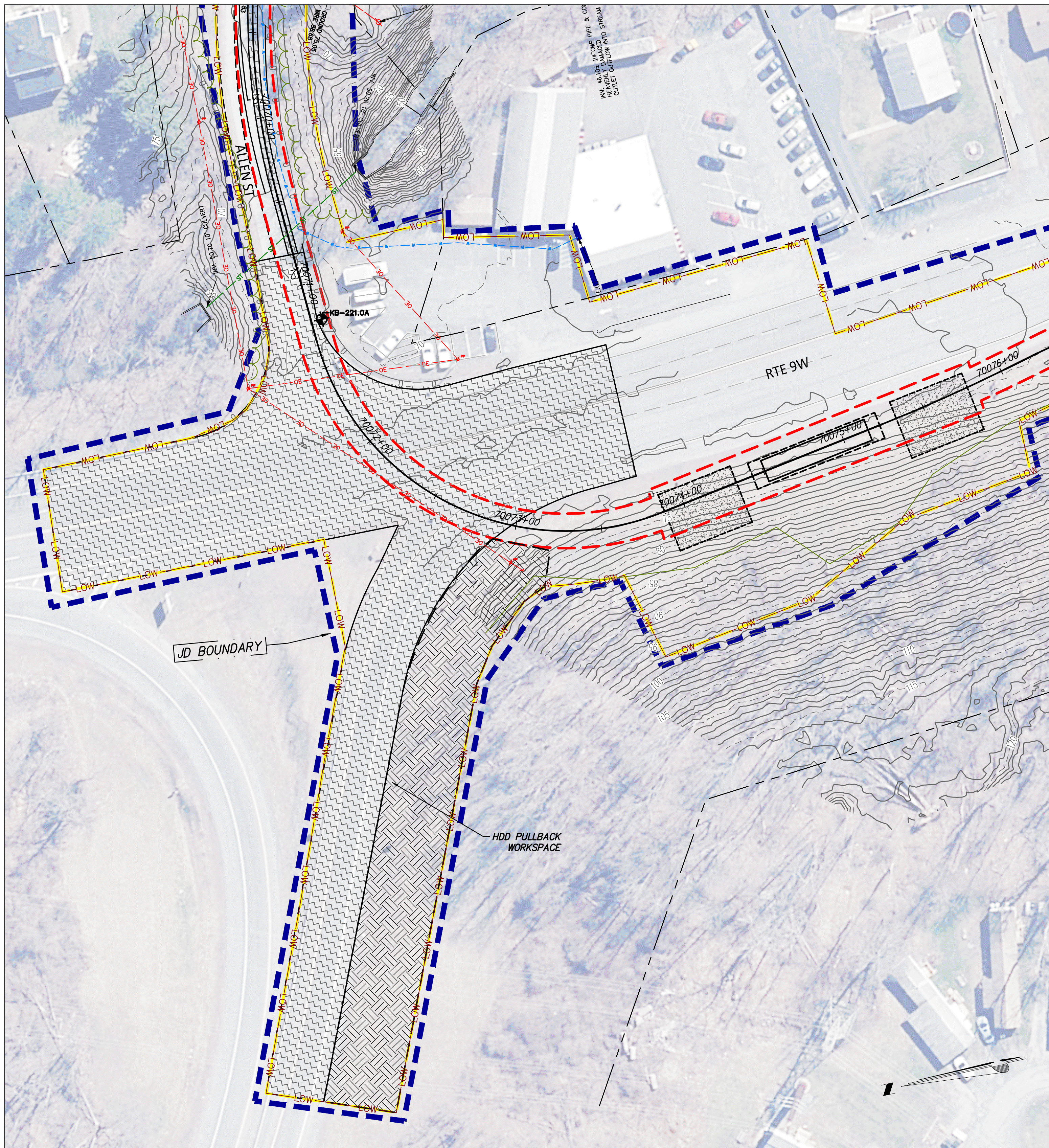
KIEWIT PROJECT NO.	21162
TT PROJECT NO.	204-3701
DRAWING NO.	C-131
DATE	03/17/2023
SH.NO.	OF

DRAWN BY: RB DESIGNED BY: AC APPROVED BY: JL SCALE AS SHOWN REV. NO. DATE

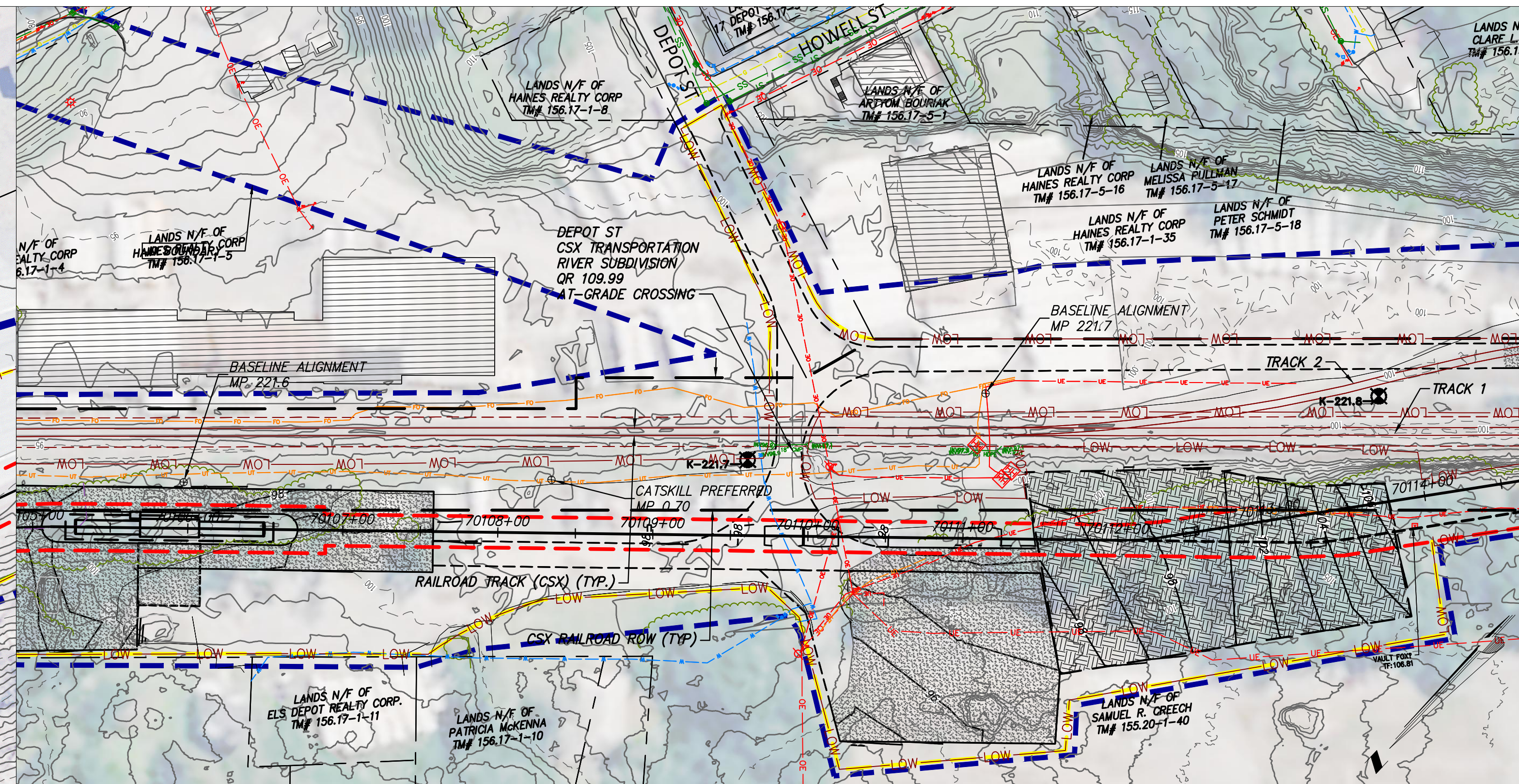
A

B

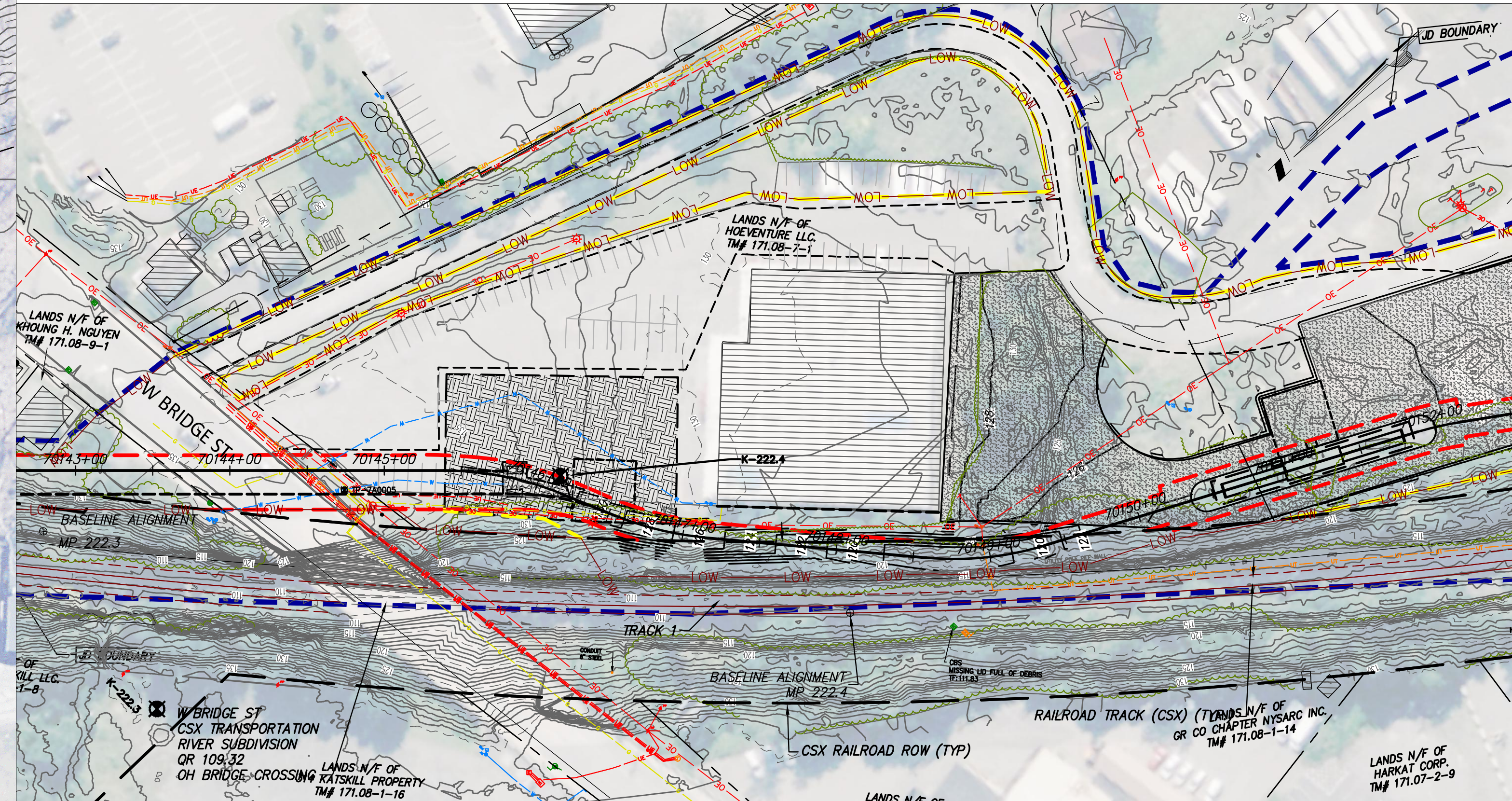
File: C:\P\WORKING\CHPE\21162\11\21162_7A_C_131.DWG Saved: 3/17/2023 5:08:31 PM Plotted: 3/17/2023 5:10:53 PM Current User: Soqalcio, Sarah LastSavedBy: sarah.sqalcio



ALLEN STREET ROUTE 9W OPENCUT – STA. 70072+00
SCALE: 1" = 60'



7A-02-RTE – OFF SITE ACCESS OFF DEPOT STREET – STA 70110+00
SCALE: 1" = 60'



7A-04-RTE – OFF SITE ACCESS OFF WEST BRIDGE ST. – STA 70145+00
SCALE: 1" = 60'



IT IS A VIOLATION OF LAW FOR ANY PERSON, UNLESS THEY ARE ACTING UNDER THE DIRECTION OF A LICENSED PROFESSIONAL ENGINEER, ARCHITECT, LANDSCAPE ARCHITECT OR LAND SURVEYOR TO ALTER AN ITEM IN ANY WAY, IF AN ITEM BEARING THE STAMP OF A LICENSED PROFESSIONAL IS ALTERED. THE ALTERING ENGINEER, ARCHITECT, LANDSCAPE ARCHITECT OR LAND SURVEYOR SHALL STAMP THE DOCUMENT AND INCLUDE THE NOTATION "ALTERED BY" FOLLOWED BY THEIR SIGNATURE, THE DATE OF SUCH ALTERATION, AND A SPECIFIC DESCRIPTION OF THE ALTERATION.

ISSUED FOR PERMITTING

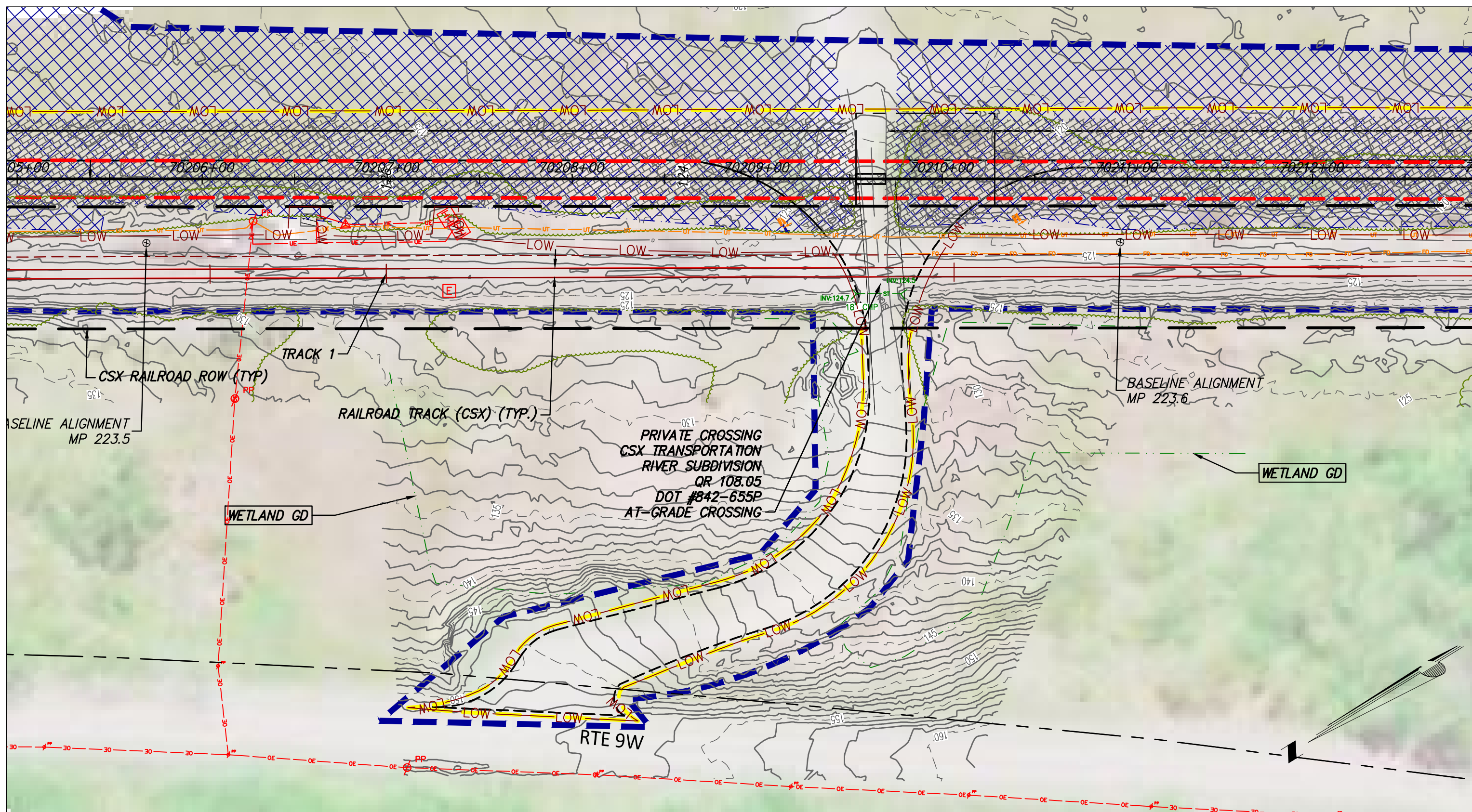
No.	DATE	SUBMITTAL / REVISION DESCRIPTION	DB	APP
F	3/17/2023	FINAL SUBMISSION	RB	JL
E	01/24/2023	DRAFT FINAL SUBMISSION	RB	JL
D	11/16/2022	PRELIMINARY DRAFT FINAL SUBMISSION	RB	JL
	04/29/2022	60% DESIGN SUBMISSION	RB	JL
B	03/22/2022	PRELIMINARY DESIGN DEVELOPMENT	BV	TK
A	02/14/2022	PRELIMINARY PROGRESS	BV	TK

**CHAMPLAIN HUDSON POWER EXPRESS
SEGMENT 11 (PACKAGE 7A) - CSX: CATSKILL
OFF SITE ACCESS ROADS (SHEET 1 OF 2)**

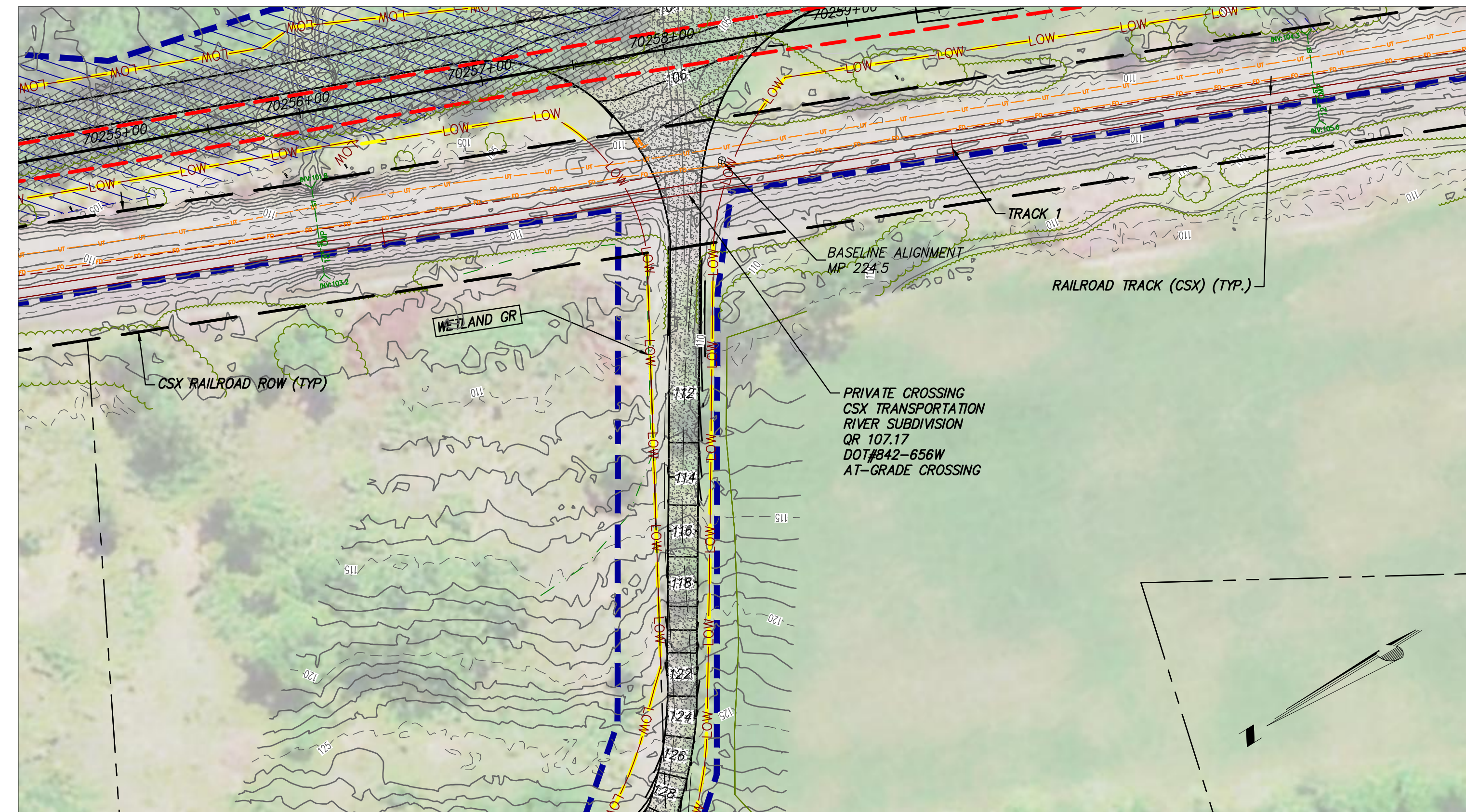
DRAWN BY: RB DESIGNED BY: AR APPROVED BY: JL SCALE: AS SHOWN DATE: 03/17/2023
REV. NO. F SH. NO. OF

KIEWIT PROJECT NO.	21162
TT PROJECT NO.	204-3701
DRAWING NO.	C-201

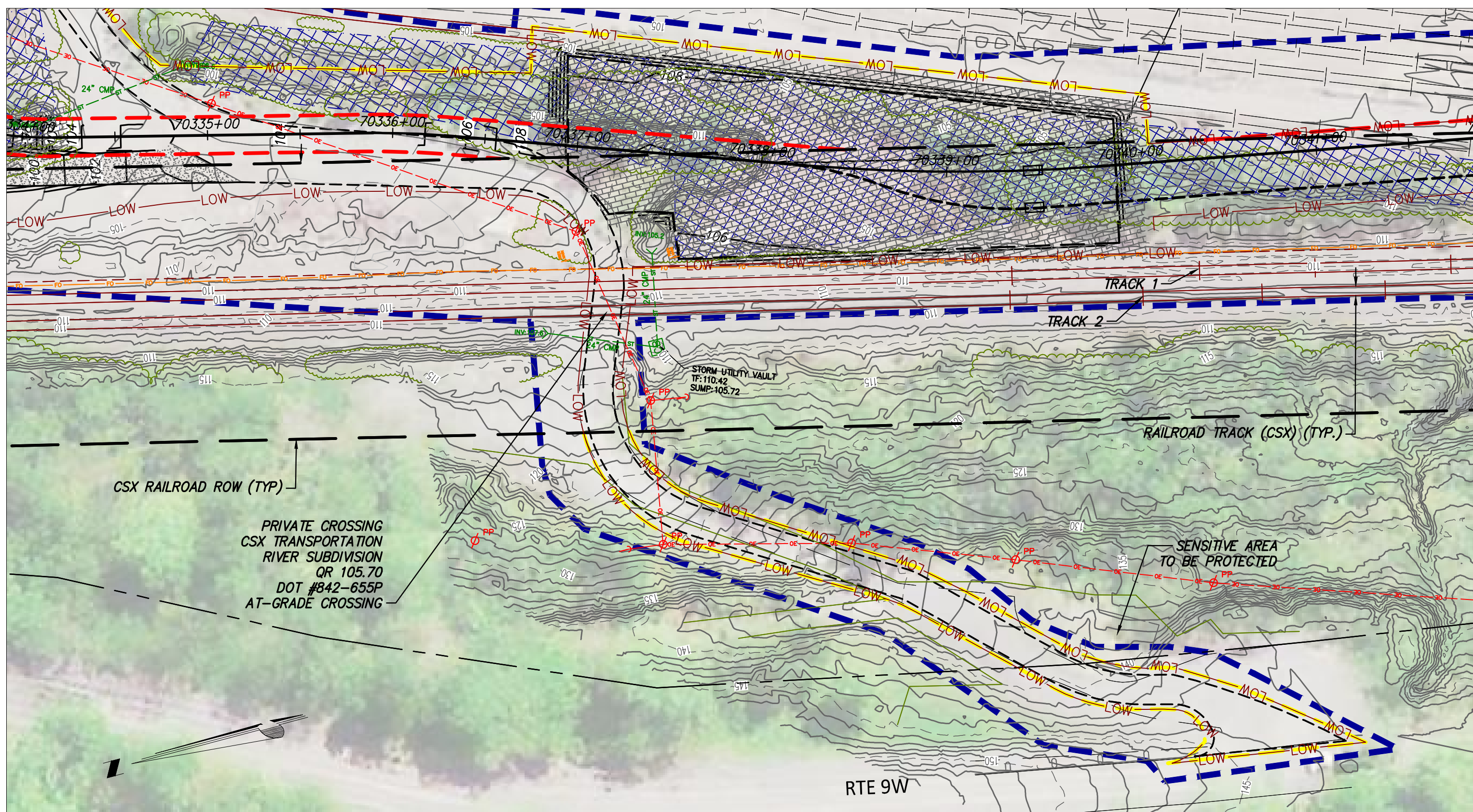
File: C:\P\WORKING\CHPE\10155141\21162_7A_C_201.DWG Saved: 3/16/2023 8:57:47 AM Plotted: 3/16/2023 11:31:28 AM Current User: Burridge, Roxanne.Laetsch@chpe.com



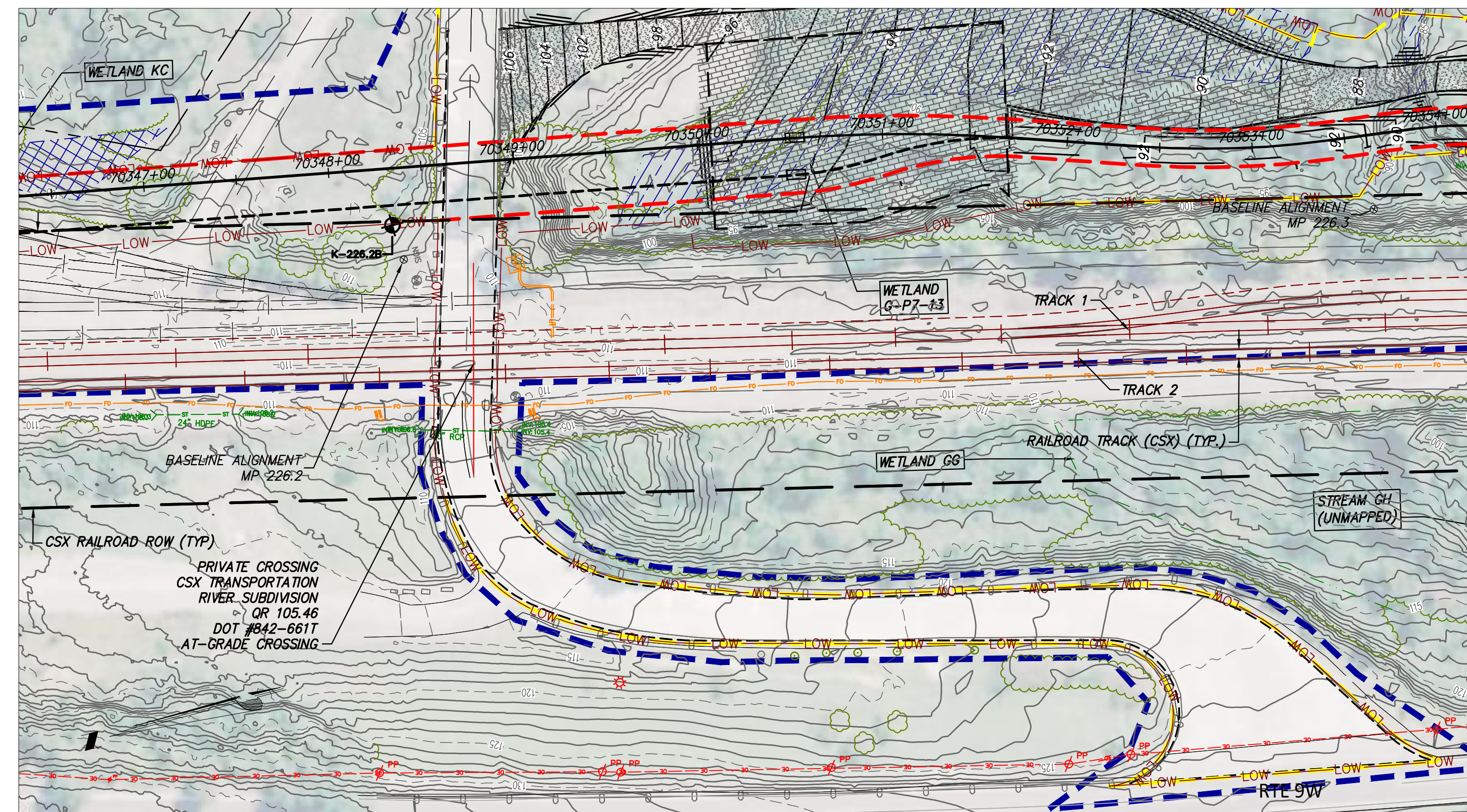
7A-05-RTE - OFF SITE ACCESS OFF RTE 9W. - STA 70210+00
SCALE: 1" = 50'



7A-06-RD - OFF SITE ACCESS OFF RTE 9W. - STA 70258+00
SCALE: 1" = 70'



7A-08-RD - OFF SITE ACCESS OFF RTE 9W. - STA 70337+00
SCALE: 1" = 50'



7A-09-RTE - OFF SITE ACCESS OFF RTE 9W. - STA 70348+00
SCALE: 1" = 50'



TETRA TECH ENGINEERING AND SURVEYING P.C.
(A NEW YORK PROFESSIONAL CORPORATION)

IT IS A VIOLATION OF LAW FOR ANY PERSON, UNLESS THEY ARE ACTING UNDER THE DIRECTION OF A LICENSED PROFESSIONAL ENGINEER, ARCHITECT, LANDSCAPE ARCHITECT OR LAND SURVEYOR TO ALTER AN ITEM IN ANY WAY, IF AN ITEM BEARING THE STAMP OF A LICENSED PROFESSIONAL IS ALTERED. THE ALTERING ENGINEER, ARCHITECT, LANDSCAPE ARCHITECT OR LAND SURVEYOR SHALL STAMP THE DOCUMENT AND INCLUDE THE NOTATION "ALTERED BY" FOLLOWED BY THEIR SIGNATURE, THE DATE OF SUCH ALTERATION, AND A SPECIFIC DESCRIPTION OF THE ALTERATION.

ISSUED FOR PERMITTING

No.	DATE	SUBMITTAL / REVISION DESCRIPTION	DB	APP
F	03/17/2023	FINAL SUBMISSION	RB	JL
E	01/24/2023	DRAFT FINAL SUBMISSION	RB	JL
D	11/16/2022	PRELIMINARY DRAFT FINAL SUBMISSION	RB	JL
C	04/29/2022	60% DESIGN SUBMISSION	RB	JL
B	03/22/2022	PRELIMINARY DESIGN DEVELOPMENT	BV	TK
A	02/14/2022	PRELIMINARY PROGRESS	BV	TK

**CHAMPLAIN HUDSON POWER EXPRESS
SEGMENT 11 (PACKAGE 7A) - CSX: CATSKILL
OFF SITE ACCESS ROADS (SHEET 2 OF 2)**

DRAWN BY: RB DESIGNED BY: AC APPROVED BY: JL SCALE: AS SHOWN DATE: 03/17/2023
REV. NO. F SH. NO. OF

KIEWIT PROJECT NO.	21162
TT PROJECT NO.	204-3701
DRAWING NO.	C-202

File: C:\P\WORKING\REV\1\055141\21162_7A_C_202.DWG. Saved: 3/16/2023 1:04:02 PM. Plotted: 3/16/2023 5:53:02 PM. Current User: Burridge, Roxanne. Last Saved By: Roxanne Burridge