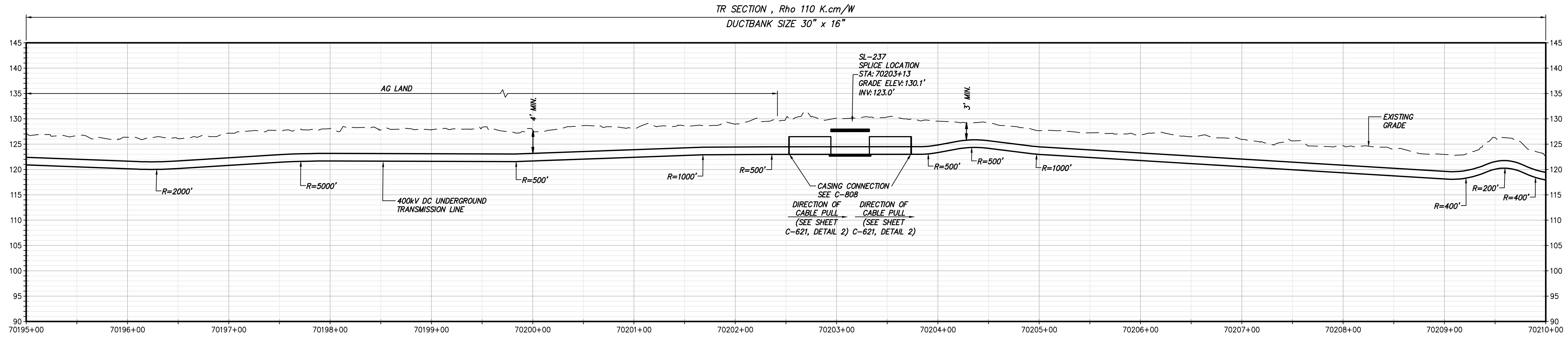
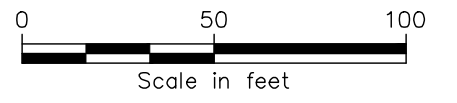


STA. 70195+00.00 TO STA. 70210+00.00 PLAN VIEW  
SCALE: 1" = 50'



STA. 70195+00 TO STA. 70210+00 PROFILE VIEW  
SCALE: H:1" = 50' V:1" = 10'



TETRA TECH ENGINEERING AND SURVEYING P.C.  
(A NEW YORK PROFESSIONAL CORPORATION)

IT IS A VIOLATION OF LAW FOR ANY PERSON, UNLESS THEY ARE ACTING UNDER THE DIRECTION OF A LICENSED PROFESSIONAL ENGINEER, ARCHITECT, LANDSCAPE ARCHITECT OR LAND SURVEYOR TO ALTER AN ITEM IN ANY WAY, IF AN ITEM BEARING THE STAMP OF A LICENSED PROFESSIONAL IS ALTERED. THE ALTERING ENGINEER, ARCHITECT, LANDSCAPE ARCHITECT OR LAND SURVEYOR SHALL STAMP THE DOCUMENT AND INCLUDE THE NOTATION "ALTERED BY" FOLLOWED BY THEIR SIGNATURE, THE DATE OF SUCH ALTERATION, AND A SPECIFIC DESCRIPTION OF THE ALTERATION.

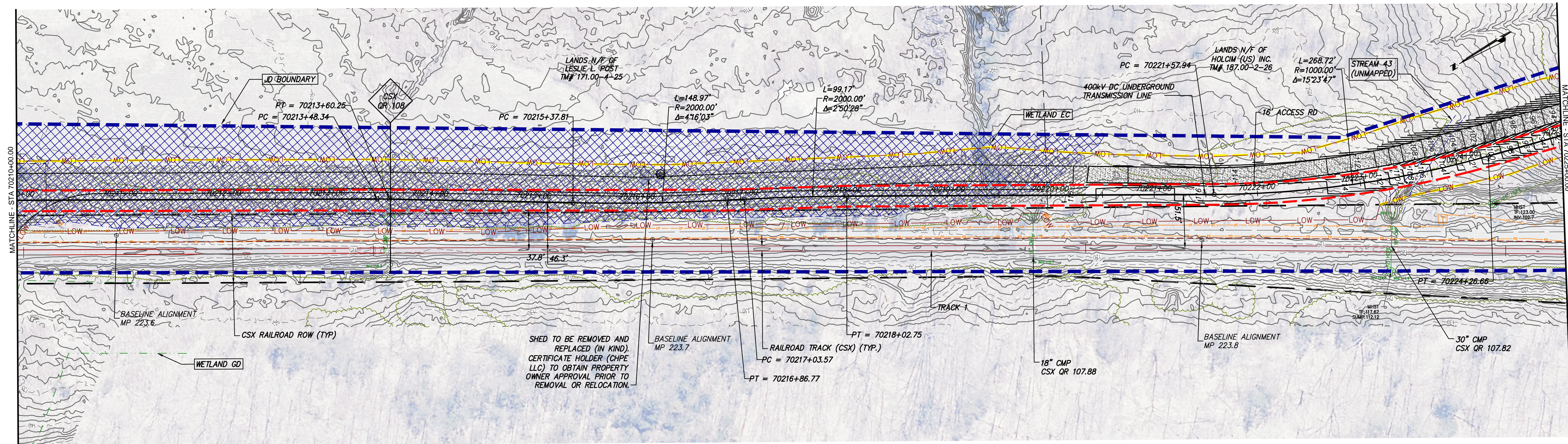
**ISSUED FOR PERMITTING**

No.	DATE	SUBMITTAL / REVISION DESCRIPTION	DB	APP
F	03/17/2023	FINAL SUBMISSION	RB	JL
E	01/24/2023	DRAFT FINAL SUBMISSION	RB	JL
D	11/16/2022	PRELIMINARY DRAFT FINAL SUBMISSION	RB	JL
C	04/29/2022	60% DESIGN SUBMISSION	RB	JL
B	03/22/2022	PRELIMINARY DESIGN DEVELOPMENT	BV	TK
A	02/14/2022	PRELIMINARY PROGRESS	BV	TK

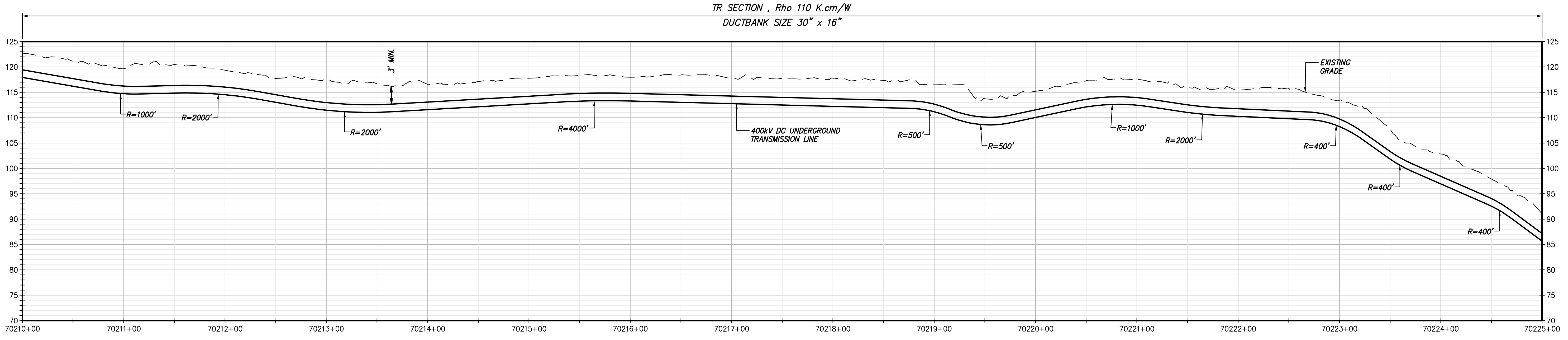
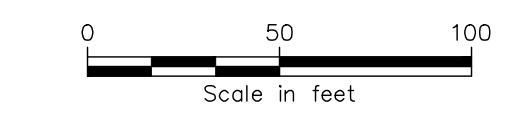
**CHAMPLAIN HUDSON POWER EXPRESS  
SEGMENT 11 (PACKAGE 7A) - CSX: CATSKILL**  
STA. 70195+00.00 TO STA. 70210+00.00

KIEWIT PROJECT NO.	21162
TT PROJECT NO.	204-3701
DRAWING NO.	C-114

DRAWN BY: RB DESIGNED BY: AC APPROVED BY: JL SCALE: AS SHOWN DATE: 03/17/2023  
REV. NO. F SH. NO. OF



STA. 70210+00.00 TO STA. 70225+00.00 PLAN VIEW  
SCALE: 1" = 50'



STA. 70210+00 TO STA. 70225+00 PROFILE VIEW  
SCALE: H:1" = 50' V:1" = 10'



IT IS A VIOLATION OF LAW FOR ANY PERSON, UNLESS THEY ARE ACTING UNDER THE DIRECTION OF A LICENSED PROFESSIONAL ENGINEER, ARCHITECT, LANDSCAPE ARCHITECT OR LAND SURVEYOR TO ALTER AN ITEM IN ANY WAY, IF AN ITEM BEARING THE STAMP OF A LICENSED PROFESSIONAL IS ALTERED. THE ALTERING ENGINEER, ARCHITECT, LANDSCAPE ARCHITECT OR LAND SURVEYOR SHALL STAMP THE DOCUMENT AND INCLUDE THE NOTATION "ALTERED BY" FOLLOWED BY THEIR SIGNATURE, THE DATE OF SUCH ALTERATION, AND A SPECIFIC DESCRIPTION OF THE ALTERATION.

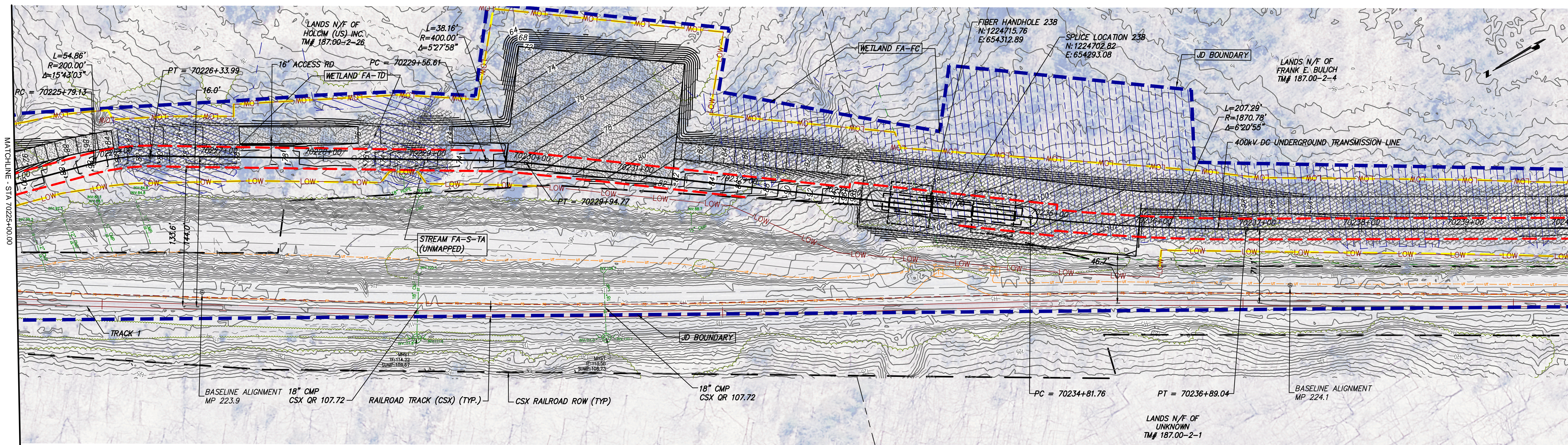
**ISSUED FOR PERMITTING**

No.	DATE	SUBMITTAL / REVISION DESCRIPTION	DB	APP
F	03/17/2023	FINAL SUBMISSION	RB	JL
E	01/24/2023	DRAFT FINAL SUBMISSION	RB	JL
D	11/16/2022	PRELIMINARY DRAFT FINAL SUBMISSION	RB	JL
C	04/29/2022	60% DESIGN SUBMISSION	RB	JL
B	03/22/2022	PRELIMINARY DESIGN DEVELOPMENT	BV	TK
A	02/14/2022	PRELIMINARY PROGRESS	BV	TK

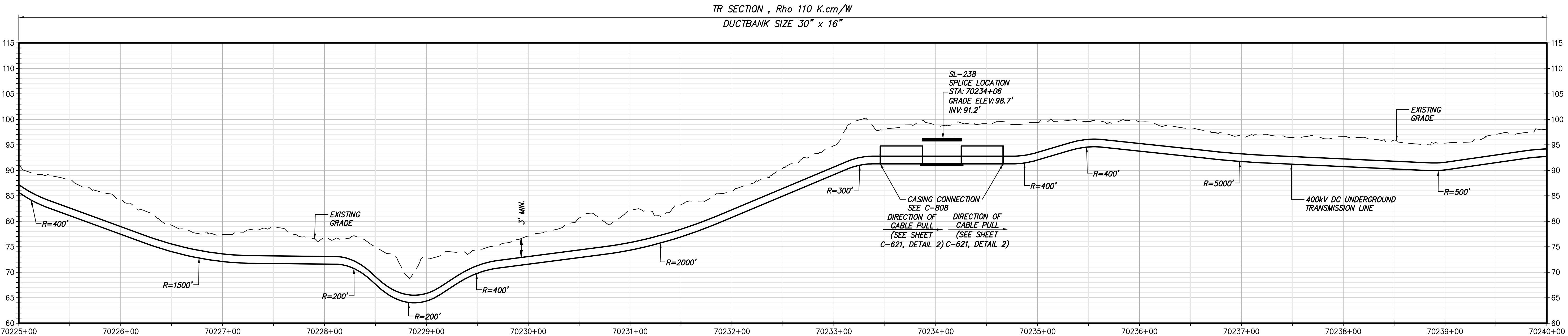
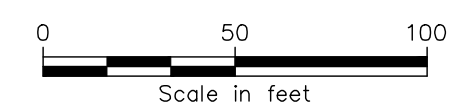
**CHAMPLAIN HUDSON POWER EXPRESS  
SEGMENT 11 (PACKAGE 7A) - CSX: CATSKILL  
STA. 70210+00.00 TO STA. 70225+00.00**

KIEWIT PROJECT NO.	21162
TT PROJECT NO.	204-3701
DRAWING NO.	C-115
DATE	03/17/2023
SH.NO.	OF

DRAWN BY: RB DESIGNED BY: AC APPROVED BY: JL SCALE AS SHOWN DATE 03/17/2023  
REV. NO. F SH.NO. OF



STA. 70225+00.00 TO STA. 70240+00.00 PLAN VIEW  
SCALE: 1" = 50'



STA. 70225+00 TO STA. 70240+00 PROFILE VIEW  
SCALE: H:1" = 50' V:1" = 10'



TETRA TECH ENGINEERING AND SURVEYING P.C.  
(A NEW YORK PROFESSIONAL CORPORATION)

IT IS A VIOLATION OF LAW FOR ANY PERSON, UNLESS THEY ARE ACTING UNDER THE DIRECTION OF A LICENSED PROFESSIONAL ENGINEER, ARCHITECT, LANDSCAPE ARCHITECT OR LAND SURVEYOR TO ALTER AN ITEM IN ANY WAY, IF AN ITEM BEARING THE STAMP OF A LICENSED PROFESSIONAL IS ALTERED. THE ALTERING ENGINEER, ARCHITECT, LANDSCAPE ARCHITECT OR LAND SURVEYOR SHALL STAMP THE DOCUMENT AND INCLUDE THE NOTATION "ALTERED BY" FOLLOWED BY THEIR SIGNATURE, THE DATE OF SUCH ALTERATION, AND A SPECIFIC DESCRIPTION OF THE ALTERATION.

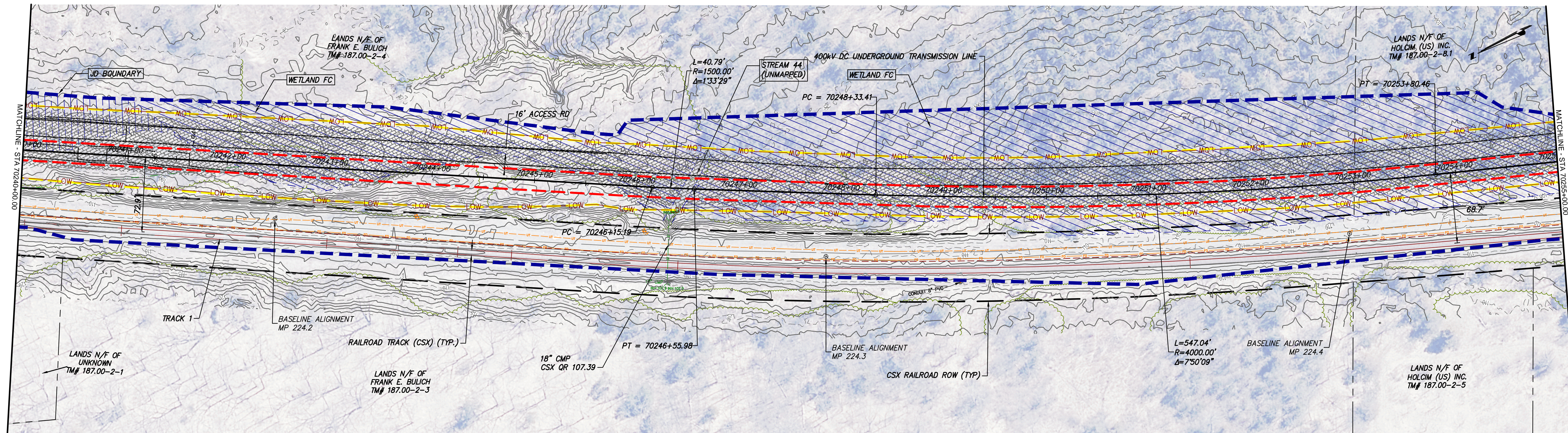
**ISSUED FOR PERMITTING**

No.	DATE	SUBMITTAL / REVISION DESCRIPTION	DB	APP
F	03/17/2023	FINAL SUBMISSION	RB	JL
E	01/24/2023	DRAFT FINAL SUBMISSION	RB	JL
D	11/16/2022	PRELIMINARY DRAFT FINAL SUBMISSION	RB	JL
C	04/29/2022	60% DESIGN SUBMISSION	RB	JL
B	03/22/2022	PRELIMINARY DESIGN DEVELOPMENT	BV	TK
A	02/14/2022	PRELIMINARY PROGRESS	BV	TK

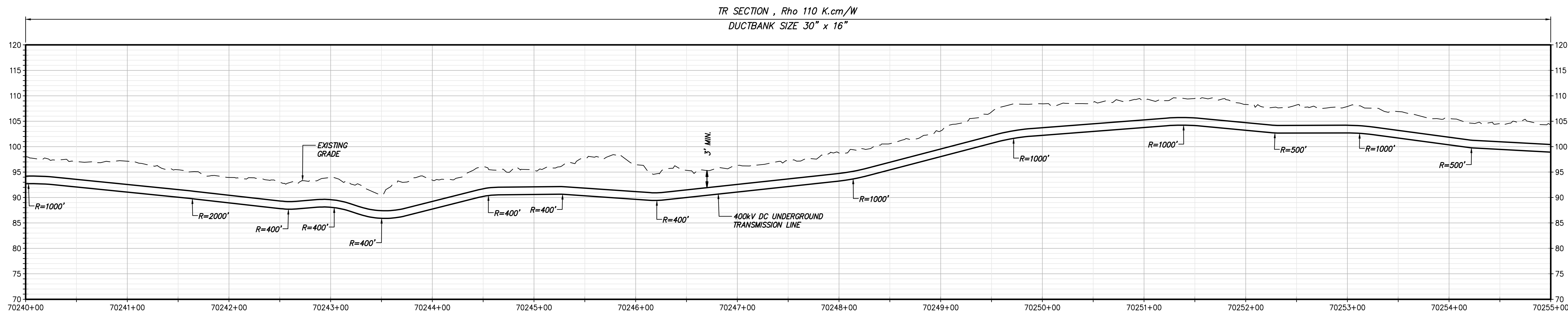
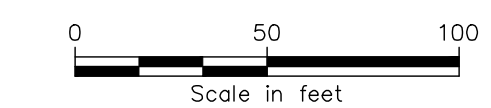
**CHAMPLAIN HUDSON POWER EXPRESS  
SEGMENT 11 (PACKAGE 7A) - CSX: CATSKILL**  
STA. 70225+00.00 TO STA. 70240+00.00

KIEWIT PROJECT NO.	21162
TT PROJECT NO.	204-3701
DRAWING NO.	<b>C-116</b>
DATE	03/17/2023
SH.NO.	OF

DRAWN BY: RB DESIGNED BY: AC APPROVED BY: JL SCALE AS SHOWN DATE 03/17/2023  
REV. NO. F SH.NO. OF



STA. 70240+00.00 TO STA. 70255+00.00 PLAN VIEW  
SCALE: 1" = 50'



STA. 70240+00 TO STA. 70255+00 PROFILE VIEW  
SCALE: H:1" = 50' V:1" = 10'



TETRA TECH ENGINEERING AND SURVEYING P.C.  
(A NEW YORK PROFESSIONAL CORPORATION)

IT IS A VIOLATION OF LAW FOR ANY PERSON, UNLESS THEY ARE ACTING UNDER THE DIRECTION OF A LICENSED PROFESSIONAL ENGINEER, ARCHITECT, LANDSCAPE ARCHITECT OR LAND SURVEYOR TO ALTER AN ITEM IN ANY WAY, IF AN ITEM BEARING THE STAMP OF A LICENSED PROFESSIONAL IS ALTERED. THE ALTERING ENGINEER, ARCHITECT, LANDSCAPE ARCHITECT OR LAND SURVEYOR SHALL STAMP THE DOCUMENT AND INCLUDE THE NOTATION "ALTERED BY" FOLLOWED BY THEIR SIGNATURE, THE DATE OF SUCH ALTERATION, AND A SPECIFIC DESCRIPTION OF THE ALTERATION.

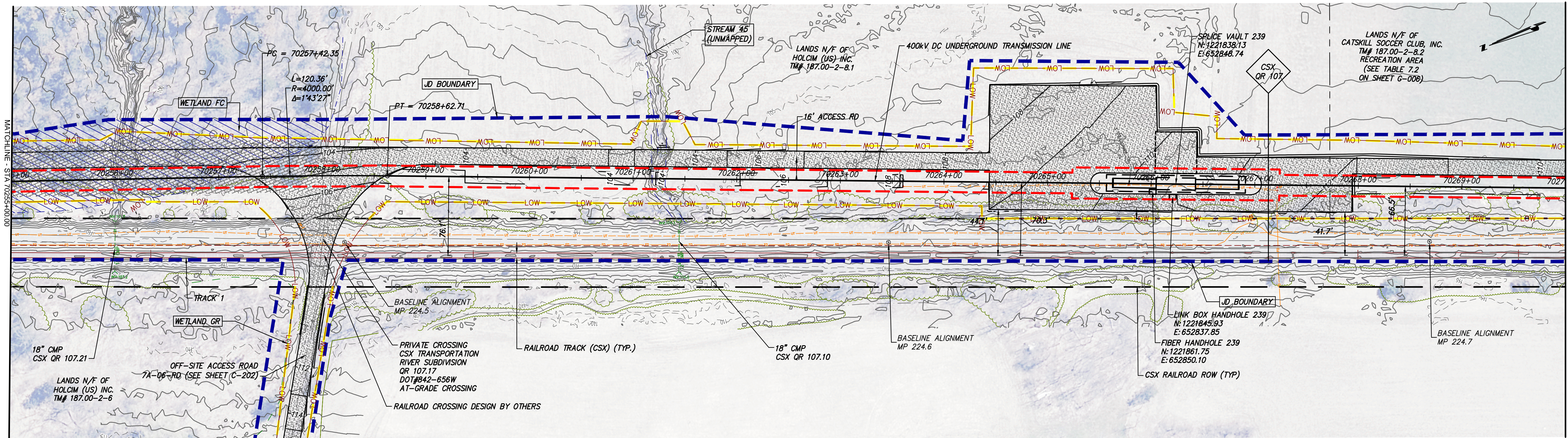
**ISSUED FOR PERMITTING**

No.	DATE	SUBMITTAL / REVISION DESCRIPTION	DB	APP
F	03/17/2023	FINAL SUBMISSION	RB	JL
E	01/24/2023	DRAFT FINAL SUBMISSION	RB	JL
D	11/16/2022	PRELIMINARY DRAFT FINAL SUBMISSION	RB	JL
C	04/29/2022	60% DESIGN SUBMISSION	RB	JL
B	03/22/2022	PRELIMINARY DESIGN DEVELOPMENT	BV	TK
A	02/14/2022	PRELIMINARY PROGRESS	BV	TK

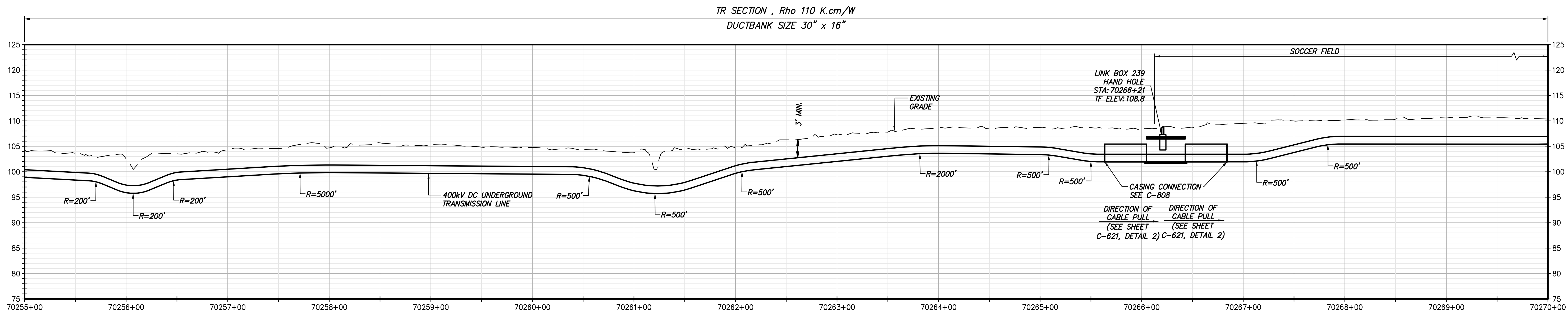
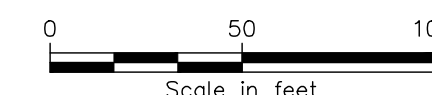
**CHAMPLAIN HUDSON POWER EXPRESS  
SEGMENT 11 (PACKAGE 7A) - CSX: CATSKILL**  
STA. 70240+00.00 TO STA. 70255+00.00

KIEWIT PROJECT NO.	21162
TT PROJECT NO.	204-3701
DRAWING NO.	C-117
DATE	03/17/2023
OF	

DRAWN BY: RB DESIGNED BY: AC APPROVED BY: JL SCALE AS SHOWN DATE 03/17/2023  
REV. NO. F SH. NO. OF



STA. 70255+00.00 TO STA. 70270+00.00 PLAN VIEW  
SCALE: 1" = 50'



STA. 70255+00 TO STA. 70270+00 PROFILE VIEW  
SCALE: H: 1" = 50' V: 1" = 10'



TETRA TECH ENGINEERING AND SURVEYING P.C.  
(A NEW YORK PROFESSIONAL CORPORATION)

IT IS A VIOLATION OF LAW FOR ANY PERSON, UNLESS THEY ARE ACTING UNDER THE DIRECTION OF A LICENSED PROFESSIONAL ENGINEER, ARCHITECT, LANDSCAPE ARCHITECT OR LAND SURVEYOR TO ALTER AN ITEM IN ANY WAY, IF AN ITEM BEARING THE STAMP OF A LICENSED PROFESSIONAL IS ALTERED. THE ALTERING ENGINEER, ARCHITECT, LANDSCAPE ARCHITECT OR LAND SURVEYOR SHALL STAMP THE DOCUMENT AND INCLUDE THE NOTATION "ALTERED BY" FOLLOWED BY THEIR SIGNATURE, THE DATE OF SUCH ALTERATION, AND A SPECIFIC DESCRIPTION OF THE ALTERATION.

**ISSUED FOR PERMITTING**

No.	DATE	SUBMITTAL / REVISION DESCRIPTION	DB	APP
F	03/17/2023	FINAL SUBMISSION	RB	JL
E	01/24/2023	DRAFT FINAL SUBMISSION	RB	JL
D	11/16/2022	PRELIMINARY DRAFT FINAL SUBMISSION	RB	JL
C	04/29/2022	60% DESIGN SUBMISSION	RB	JL
B	03/22/2022	PRELIMINARY DESIGN DEVELOPMENT	BV	TK
A	02/14/2022	PRELIMINARY PROGRESS	BV	TK

**CHAMPLAIN HUDSON POWER EXPRESS  
SEGMENT 11 (PACKAGE 7A) - CSX: CATSKILL**  
STA. 70255+00.00 TO STA. 70270+00.00

KIEWIT PROJECT NO.	21162
TT PROJECT NO.	204-3701
DRAWING NO.	<b>C-118</b>
DATE	03/17/2023
SH.NO.	OF

DRAWN BY: RB DESIGNED BY: AC APPROVED BY: JL SCALE: AS SHOWN DATE: 03/17/2023  
REV. NO. F SH.NO. OF