

US HIGHWAY 9W NORTHBOUND PLAN – ADVANCED WARNING SIGNS
NTS

FOR AGENCY REVIEW ONLY
3/15/2023
NOT FOR CONSTRUCTION

NOTES:
1. ADVANCE WARNING SIGNS SHOWN POSITIONED FOR ILLUSTRATIVE PURPOSES ONLY. SIGNS TO BE SPACED OUT AT MINIMUM INTERVALS AS LABELED ACCORDING TO NYS DOT WORK ZONE TRAFFIC CONTROL MANUAL.
2. SEE SHEET C-508B FOR WORK ZONE ENLARGEMENT OF LANE CLOSURE AND LANE SHIFT
3. CONSTRUCTION SPEED LIMIT ON 9W IS REDUCED TO 30 MPH

LEGEND

	WORK SPACE
	DIRECTION OF TRAFFIC DETOUR
	SIGN (TEMPORARY)
	CHANNELIZING DEVICE
	BLACK ON ORANGE



IT IS A VIOLATION OF LAW FOR ANY PERSON, UNLESS THEY ARE ACTING UNDER THE DIRECTION OF A LICENSED PROFESSIONAL ENGINEER, ARCHITECT, LANDSCAPE ARCHITECT OR LAND SURVEYOR TO ALTER AN ITEM IN ANY WAY. IF AN ITEM BEARING THE STAMP OF A LICENSED PROFESSIONAL IS ALTERED, THE ALTERING ENGINEER, ARCHITECT, LANDSCAPE ARCHITECT OR LAND SURVEYOR SHALL STAMP THE DOCUMENT AND INCLUDE THE NOTATION "ALTERED BY" FOLLOWED BY THEIR SIGNATURE, THE DATE OF SUCH ALTERATION, AND A SPECIFIC DESCRIPTION OF THE ALTERATION.

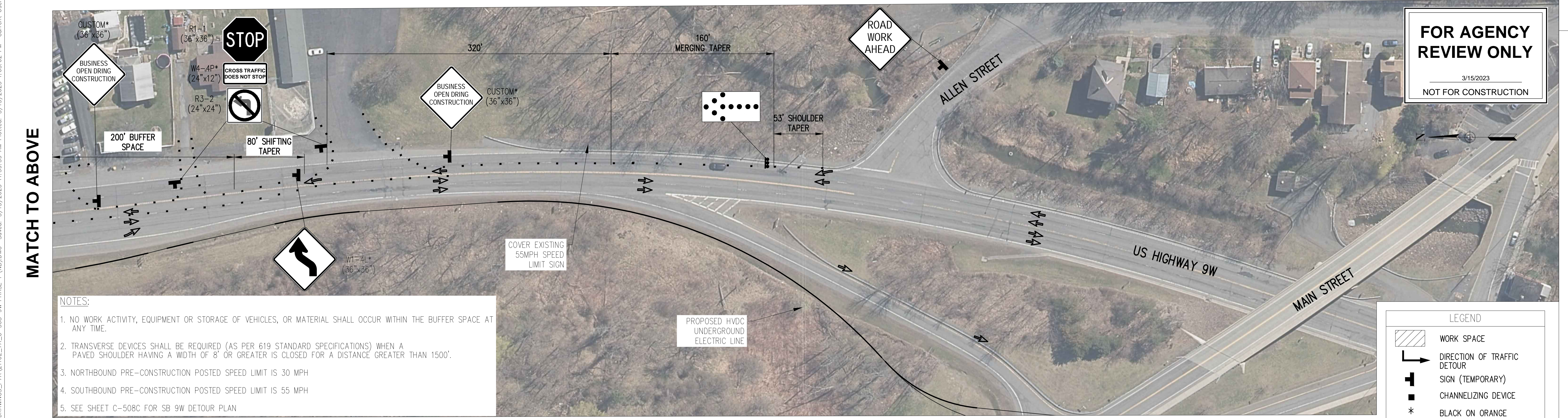
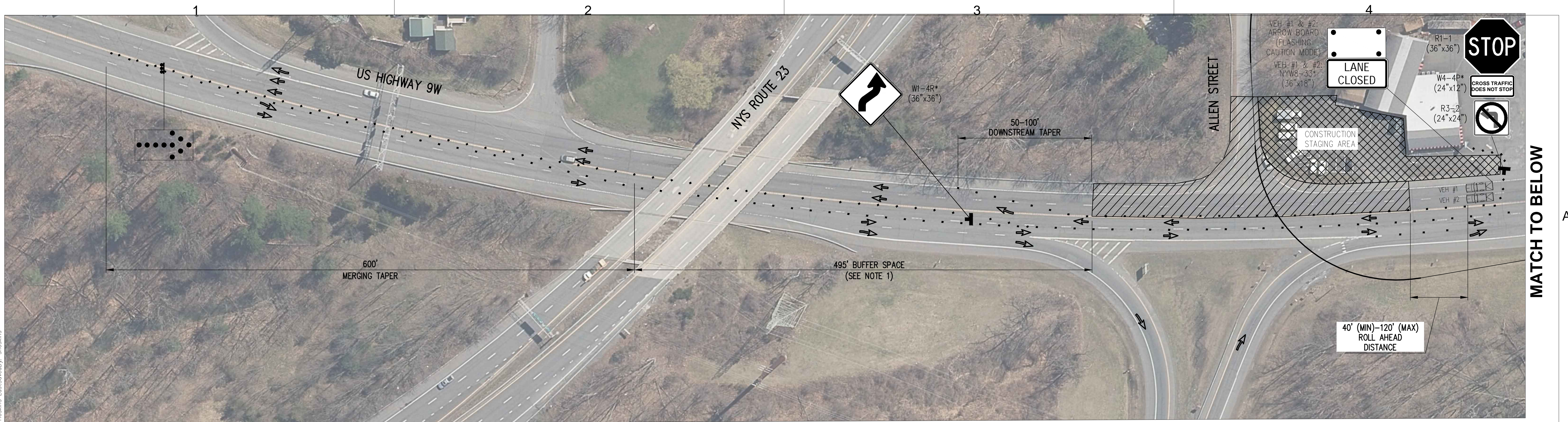
ISSUED FOR PERMITTING

No.	DATE	SUBMITTAL / REVISION DESCRIPTION	DB	APP
B	03/15/2023	DRAFT FINAL SUBMISSION	SH	TD
A	12/02/2022	60% DRAFT SUBMISSION	SH	TD

CHAMPLAIN HUDSON POWER EXPRESS
SEGMENT 11 (PACKAGE 7A) - CSX: CATSKILL
WORK ZONE TRAFFIC CONTROL
US HIGHWAY 9W (NB) LANE CLOSURE WITH LANE SHIFT

KIEWIT PROJECT NO.	21162
EDR PROJECT NO.	21075
DRAWING NO.	C-508A
DRAWN BY:	DESIGNED BY: SH
APPROVED BY: TD	SCALE AS SHOWN
DATE 3/15/2023	DATE 3/15/2023
OF	OF

File: I:\21075 CHPE EDR\CAD\WORKING DRAWINGS_P7A\21162_7A_C-508B-9W PHASE 1 (NB).DWG Saved: 3/15/2023 11:58:59 AM Plotted: 3/15/2023 1:05:00 PM Current User: Stephen Hoskins Last Saved By: shoskins



NOTES:

1. NO WORK ACTIVITY, EQUIPMENT OR STORAGE OF VEHICLES, OR MATERIAL SHALL OCCUR WITHIN THE BUFFER SPACE AT ANY TIME.
2. TRANSVERSE DEVICES SHALL BE REQUIRED (AS PER 619 STANDARD SPECIFICATIONS) WHEN A PAVED SHOULDER HAVING A WIDTH OF 8' OR GREATER IS CLOSED FOR A DISTANCE GREATER THAN 1500'.
3. NORTHBOUND PRE-CONSTRUCTION POSTED SPEED LIMIT IS 30 MPH
4. SOUTHBOUND PRE-CONSTRUCTION POSTED SPEED LIMIT IS 55 MPH
5. SEE SHEET C-508C FOR SB 9W DETOUR PLAN

US HIGHWAY 9W NORTHBOUND PLAN ENLARGEMENT
NTS

FOR AGENCY REVIEW ONLY
3/15/2023
NOT FOR CONSTRUCTION

LEGEND

	WORK SPACE
	DIRECTION OF TRAFFIC DETOUR
	SIGN (TEMPORARY)
	CHANNELIZING DEVICE
*	BLACK ON ORANGE



IT IS A VIOLATION OF LAW FOR ANY PERSON, UNLESS THEY ARE ACTING UNDER THE DIRECTION OF A LICENSED PROFESSIONAL ENGINEER, ARCHITECT, LANDSCAPE ARCHITECT OR LAND SURVEYOR TO ALTER AN ITEM IN ANY WAY. IF AN ITEM BEARING THE STAMP OF A LICENSED PROFESSIONAL IS ALTERED, THE ALTERING ENGINEER, ARCHITECT, LANDSCAPE ARCHITECT OR LAND SURVEYOR SHALL STAMP THE DOCUMENT AND INCLUDE THE NOTATION "ALTERED BY" FOLLOWED BY THEIR SIGNATURE, THE DATE OF SUCH ALTERATION, AND A SPECIFIC DESCRIPTION OF THE ALTERATION.

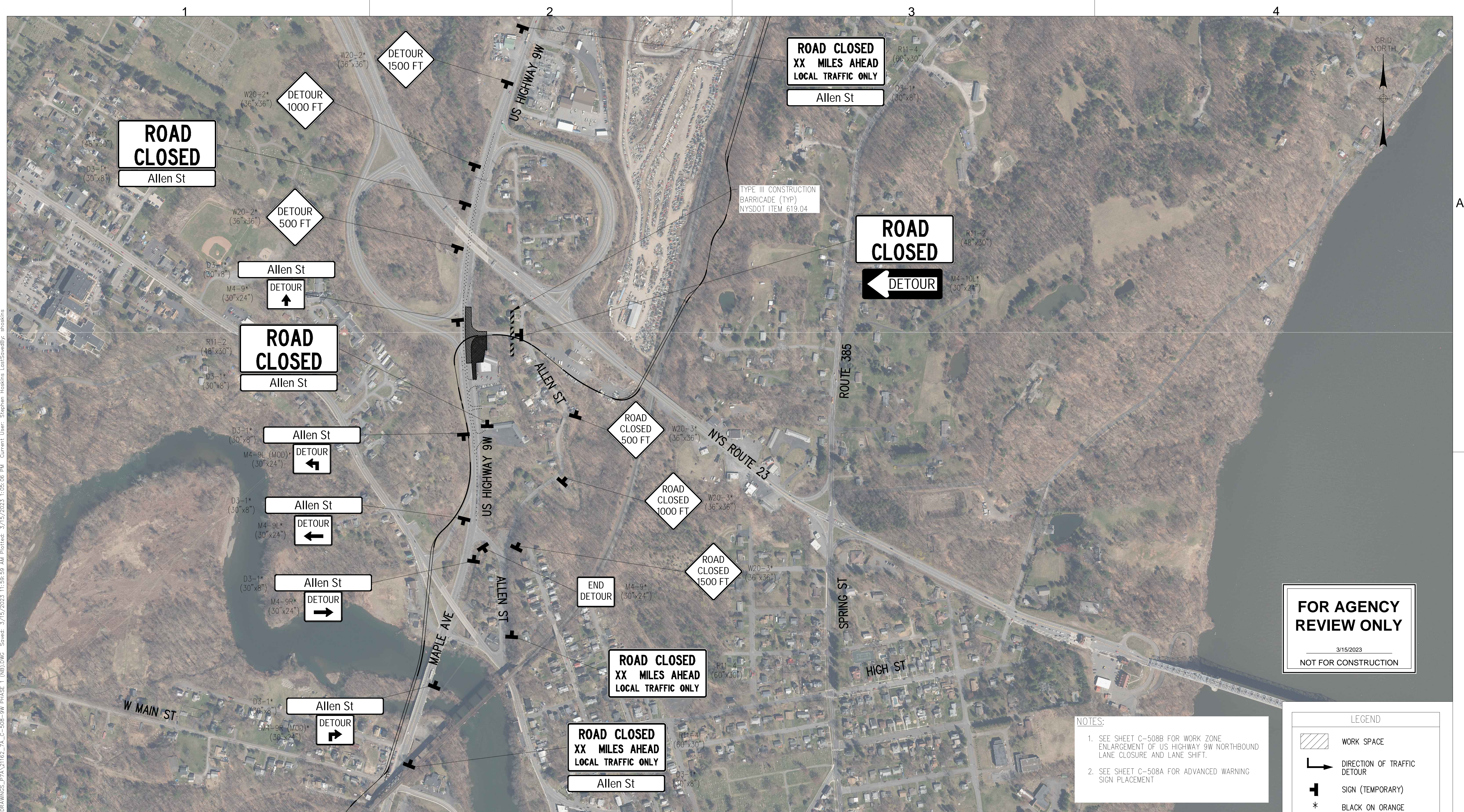
ISSUED FOR PERMITTING

No.	DATE	SUBMITTAL / REVISION DESCRIPTION	DB	APP
B	03/15/2023	DRAFT FINAL SUBMISSION	SH	TD
A	12/02/2022	60% DRAFT SUBMISSION	SH	TD

CHAMPLAIN HUDSON POWER EXPRESS
SEGMENT 11 (PACKAGE 7A) - CSX: CATSKILL
WORK ZONE TRAFFIC CONTROL
US HIGHWAY 9W (NB) LANE CLOSURE WITH LANE SHIFT

KIEWIT PROJECT NO.	21162
EDR PROJECT NO.	21075
DRAWING NO.	C-508B
DRAWN BY:	DESIGNED BY: SH
APPROVED BY: TD	SCALE AS SHOWN
DATE 3/15/2023	DATE 3/15/2023
OF	OF

File: I:\21075 CHPE EDR\CAD\WORKING DRAWINGS_P7A\21162_7A_C-508B-9W PHASE 1 (NB).DWG Saved: 3/15/2023 11:58:59 AM Plotter: 3/15/2023 1:05:02 PM Current User: Stephen Hoskins Last Saved By: shoskins



FOR AGENCY REVIEW ONLY

3/15/2023

NOT FOR CONSTRUCTION

NOTES:

- SEE SHEET C-508B FOR WORK ZONE ENLARGEMENT OF US HIGHWAY 9W NORTHBOUND LANE CLOSURE AND LANE SHIFT.
- SEE SHEET C-508A FOR ADVANCED WARNING SIGN PLACEMENT

LEGEND

- WORK SPACE
- DIRECTION OF TRAFFIC DETOUR
- SIGN (TEMPORARY)
- BLACK ON ORANGE

US HIGHWAY 9W NORTHBOUND PLAN – ALLEN STREET DETOUR PLAN
NTS



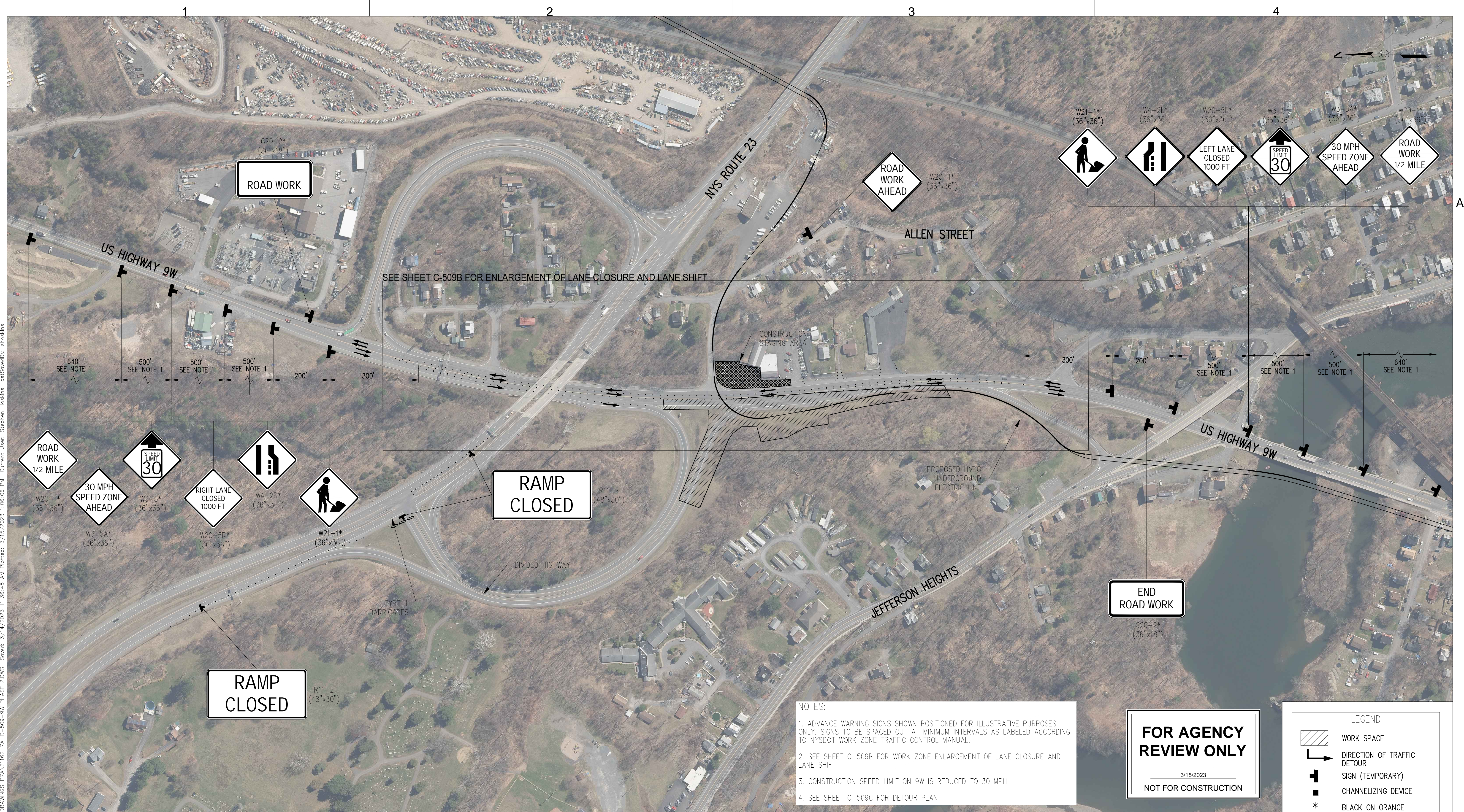
IT IS A VIOLATION OF LAW FOR ANY PERSON, UNLESS THEY ARE ACTING UNDER THE DIRECTION OF A LICENSED PROFESSIONAL ENGINEER, ARCHITECT, LANDSCAPE ARCHITECT OR LAND SURVEYOR TO ALTER AN ITEM IN ANY WAY. IF AN ITEM BEARING THE STAMP OF A LICENSED PROFESSIONAL IS ALTERED, THE ALTERING ENGINEER, ARCHITECT, LANDSCAPE ARCHITECT OR LAND SURVEYOR SHALL STAMP THE DOCUMENT AND INCLUDE THE NOTATION "ALTERED BY" FOLLOWED BY THEIR SIGNATURE, THE DATE OF SUCH ALTERATION, AND A SPECIFIC DESCRIPTION OF THE ALTERATION.

ISSUED FOR PERMITTING

No.	DATE	SUBMITTAL / REVISION DESCRIPTION	DB	APP
B	03/15/2023	DRAFT FINAL SUBMISSION	SH	TD
A	12/02/2022	60% DRAFT SUBMISSION	SH	TD

CHAMPLAIN HUDSON POWER EXPRESS
SEGMENT 11 (PACKAGE 7A) - CSX: CATSKILL
WORK ZONE TRAFFIC CONTROL
US HIGHWAY 9W NORTHBOUND PLAN
ALLEN STREET DETOUR

KIEWIT PROJECT NO.	21162
EDR PROJECT NO.	21075
DRAWING NO.	C-508B
DRAWN BY:	DESIGNED BY: SH
APPROVED BY: TD	SCALE AS SHOWN
DATE 3/15/2023	DATE 3/15/2023
OF	OF



NOTES:

1. ADVANCE WARNING SIGNS SHOWN POSITIONED FOR ILLUSTRATIVE PURPOSES ONLY. SIGNS TO BE SPACED OUT AT MINIMUM INTERVALS AS LABELED ACCORDING TO NYS DOT WORK ZONE TRAFFIC CONTROL MANUAL.
2. SEE SHEET C-509B FOR WORK ZONE ENLARGEMENT OF LANE CLOSURE AND LANE SHIFT
3. CONSTRUCTION SPEED LIMIT ON 9W IS REDUCED TO 30 MPH
4. SEE SHEET C-509C FOR DETOUR PLAN

FOR AGENCY REVIEW ONLY

3/15/2023

NOT FOR CONSTRUCTION

LEGEND

	WORK SPACE
	DIRECTION OF TRAFFIC DETOUR
	SIGN (TEMPORARY)
	CHANNELIZING DEVICE
*	BLACK ON ORANGE

US HIGHWAY 9W SOUTHBOUND – ADVANCE WARNING SIGN PLAN
NTS



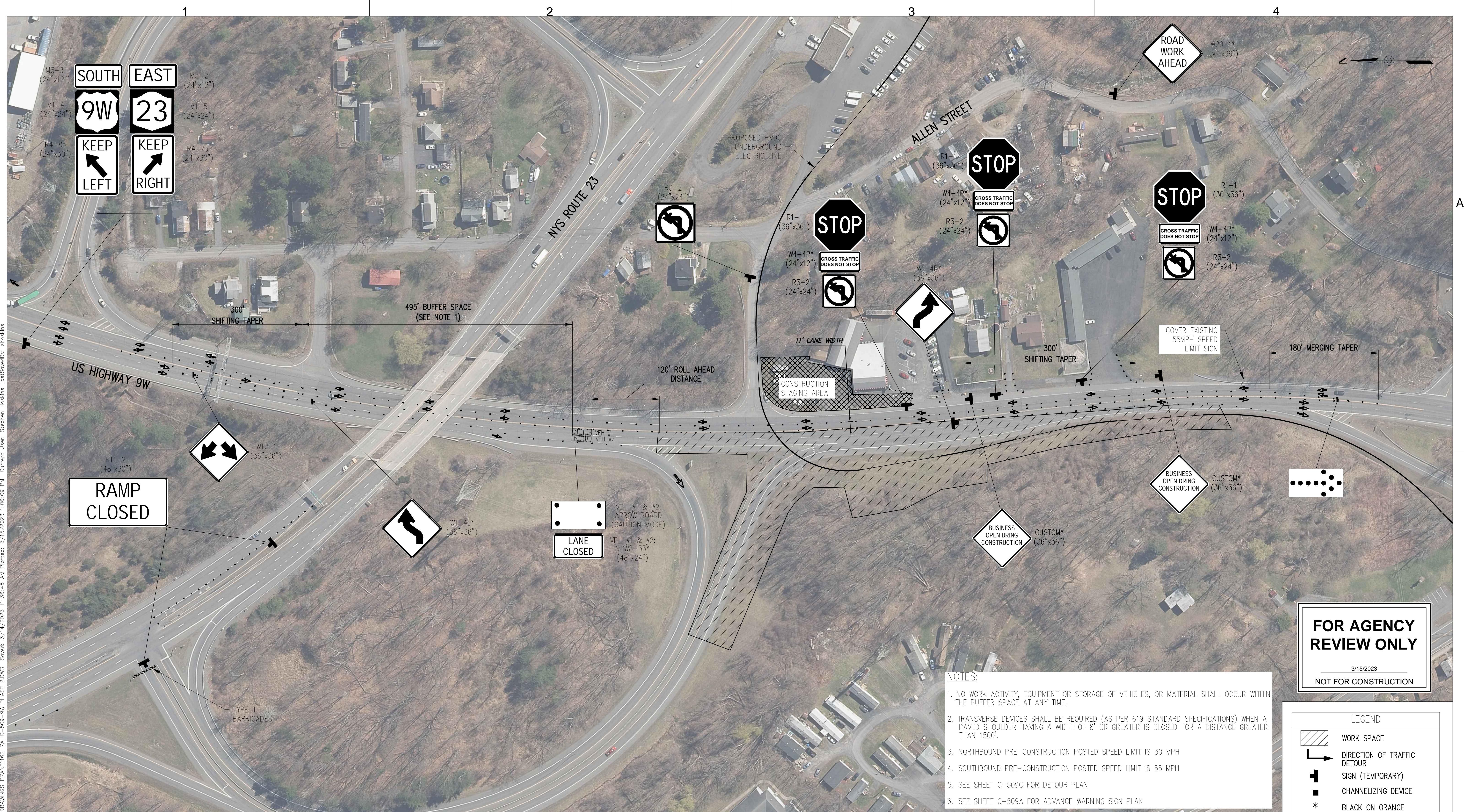
IT IS A VIOLATION OF LAW FOR ANY PERSON, UNLESS THEY ARE ACTING UNDER THE DIRECTION OF A LICENSED PROFESSIONAL ENGINEER, ARCHITECT, LANDSCAPE ARCHITECT OR LAND SURVEYOR TO ALTER AN ITEM IN ANY WAY. IF AN ITEM BEARING THE STAMP OF A LICENSED PROFESSIONAL IS ALTERED, THE ALTERING ENGINEER, ARCHITECT, LANDSCAPE ARCHITECT OR LAND SURVEYOR SHALL STAMP THE DOCUMENT AND INCLUDE THE NOTATION "ALTERED BY" FOLLOWED BY THEIR SIGNATURE, THE DATE OF SUCH ALTERATION, AND A SPECIFIC DESCRIPTION OF THE ALTERATION.

ISSUED FOR PERMITTING

No.	DATE	SUBMITTAL / REVISION DESCRIPTION	DB	APP
B	03/15/2023	DRAFT FINAL SUBMISSION	SH	TD
A	12/02/2022	60% DRAFT SUBMISSION	SH	TD

CHAMPLAIN HUDSON POWER EXPRESS
SEGMENT 11 (PACKAGE 7A) - CSX: CATSKILL
WORK ZONE TRAFFIC CONTROL
US HIGHWAY 9W (SB) LANE CLOSURE WITH LANE SHIFT

KIEWIT PROJECT NO.	21162
EDR PROJECT NO.	21075
DRAWING NO.	C-509A
DRAWN BY:	DESIGNED BY: SH
APPROVED BY: TD	SCALE AS SHOWN
DATE 3/15/2023	DATE 3/15/2023
OF	OF



US HIGHWAY 9W SOUTHBOUND PLAN ENLARGEMENT
NTS

FOR AGENCY REVIEW ONLY
3/15/2023
NOT FOR CONSTRUCTION

- NOTES:**
1. NO WORK ACTIVITY, EQUIPMENT OR STORAGE OF VEHICLES, OR MATERIAL SHALL OCCUR WITHIN THE BUFFER SPACE AT ANY TIME.
 2. TRANSVERSE DEVICES SHALL BE REQUIRED (AS PER 619 STANDARD SPECIFICATIONS) WHEN A PAVED SHOULDER HAVING A WIDTH OF 8' OR GREATER IS CLOSED FOR A DISTANCE GREATER THAN 1500'.
 3. NORTHBOUND PRE-CONSTRUCTION POSTED SPEED LIMIT IS 30 MPH
 4. SOUTHBOUND PRE-CONSTRUCTION POSTED SPEED LIMIT IS 55 MPH
 5. SEE SHEET C-509C FOR DETOUR PLAN
 6. SEE SHEET C-509A FOR ADVANCE WARNING SIGN PLAN

LEGEND

	WORK SPACE
	DIRECTION OF TRAFFIC DETOUR
	SIGN (TEMPORARY)
	CHANNELIZING DEVICE
*	BLACK ON ORANGE



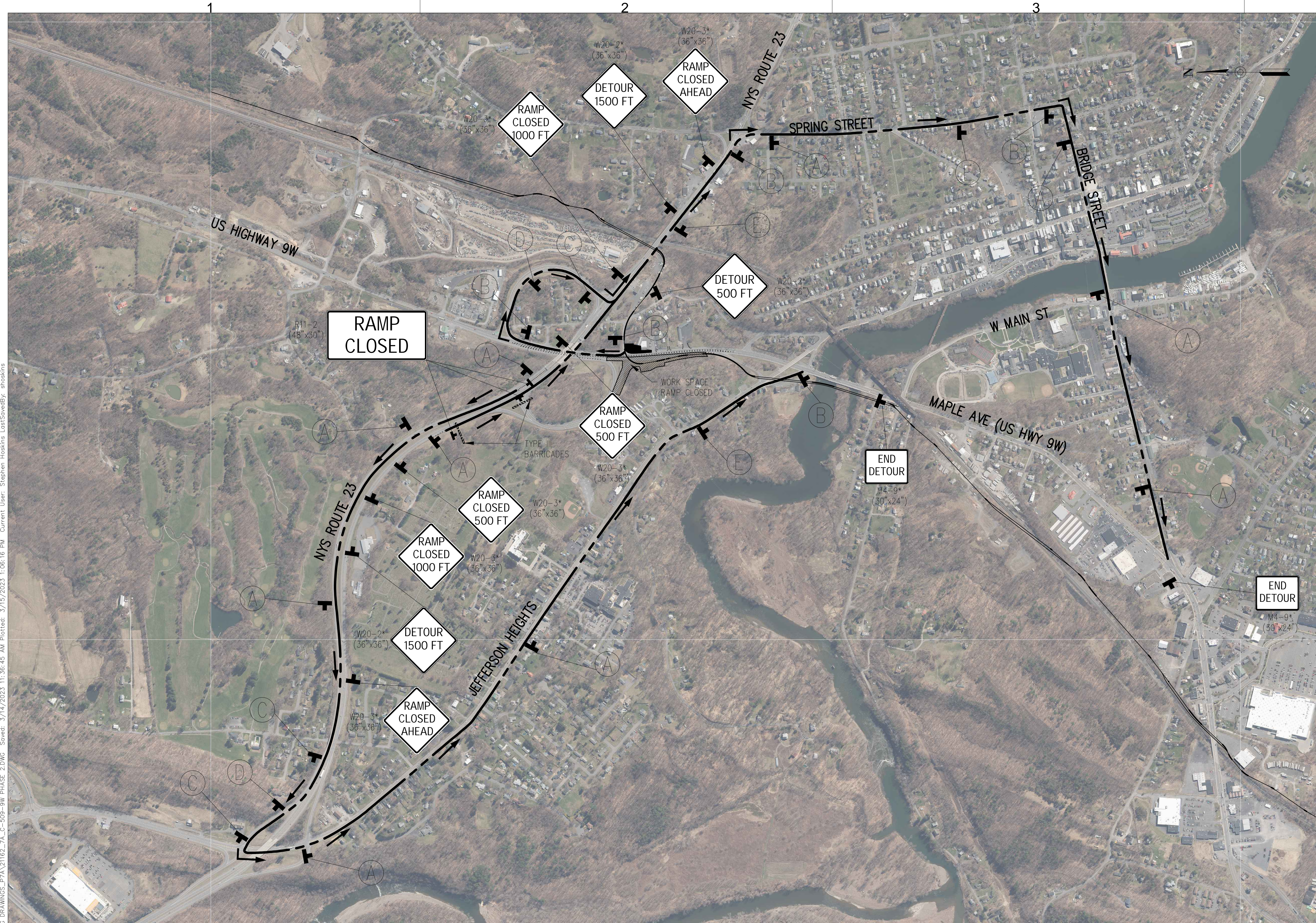
IT IS A VIOLATION OF LAW FOR ANY PERSON, UNLESS THEY ARE ACTING UNDER THE DIRECTION OF A LICENSED PROFESSIONAL ENGINEER, ARCHITECT, LANDSCAPE ARCHITECT OR LAND SURVEYOR TO ALTER AN ITEM IN ANY WAY. IF AN ITEM BEARING THE STAMP OF A LICENSED PROFESSIONAL IS ALTERED, THE ALTERING ENGINEER, ARCHITECT, LANDSCAPE ARCHITECT OR LAND SURVEYOR SHALL STAMP THE DOCUMENT AND INCLUDE THE NOTATION "ALTERED BY" FOLLOWED BY THEIR SIGNATURE, THE DATE OF SUCH ALTERATION, AND A SPECIFIC DESCRIPTION OF THE ALTERATION.

ISSUED FOR PERMITTING

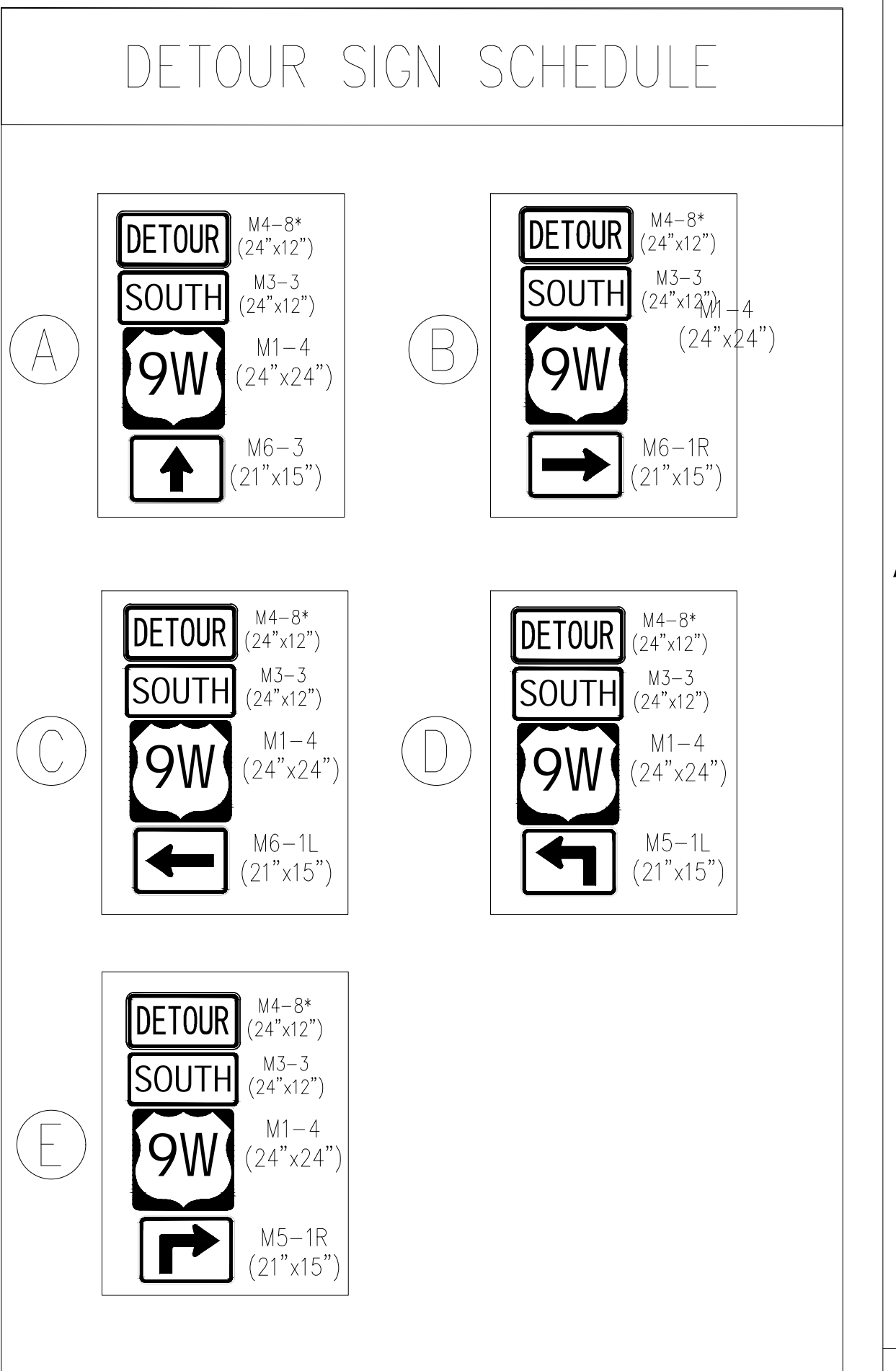
No.	DATE	SUBMITTAL / REVISION DESCRIPTION	DB	APP
B	03/15/2023	DRAFT FINAL SUBMISSION	SH	TD
A	12/02/2022	60% DRAFT SUBMISSION	SH	TD

CHAMPLAIN HUDSON POWER EXPRESS
SEGMENT 11 (PACKAGE 7A) - CSX: CATSKILL
WORK ZONE TRAFFIC CONTROL
US HIGHWAY 9W (SB) LANE CLOSURE WITH LANE SHIFT

KIEWIT PROJECT NO.	21162
EDR PROJECT NO.	21075
DRAWING NO.	C-509B
DRAWN BY:	DESIGNED BY: SH
APPROVED BY: TD	SCALE AS SHOWN
DATE 3/15/2023	DATE 3/15/2023
OF	OF

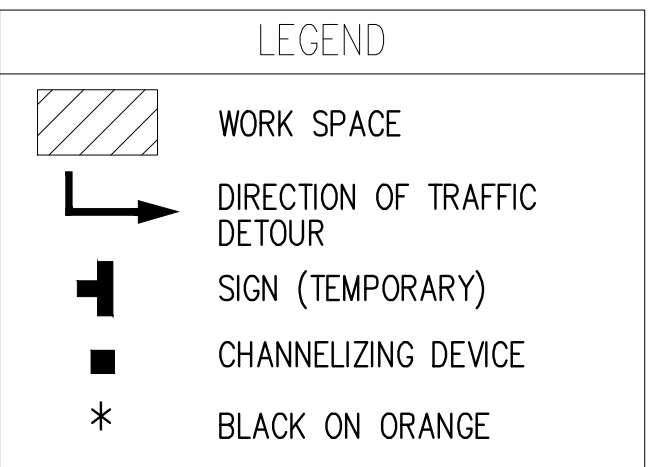


NYS ROUTE 23 TO SOUTHBOUND US HIGHWAY 9W DETOUR PLAN
NTS



FOR AGENCY REVIEW ONLY

3/15/2023
NOT FOR CONSTRUCTION



IT IS A VIOLATION OF LAW FOR ANY PERSON, UNLESS THEY ARE ACTING UNDER THE DIRECTION OF A LICENSED PROFESSIONAL ENGINEER, ARCHITECT, LANDSCAPE ARCHITECT OR LAND SURVEYOR TO ALTER AN ITEM IN ANY WAY. IF AN ITEM BEARING THE STAMP OF A LICENSED PROFESSIONAL IS ALTERED, THE ALTERING ENGINEER, ARCHITECT, LANDSCAPE ARCHITECT OR LAND SURVEYOR SHALL STAMP THE DOCUMENT AND INCLUDE THE NOTATION "ALTERED BY" FOLLOWED BY THEIR SIGNATURE, THE DATE OF SUCH ALTERATION, AND A SPECIFIC DESCRIPTION OF THE ALTERATION.

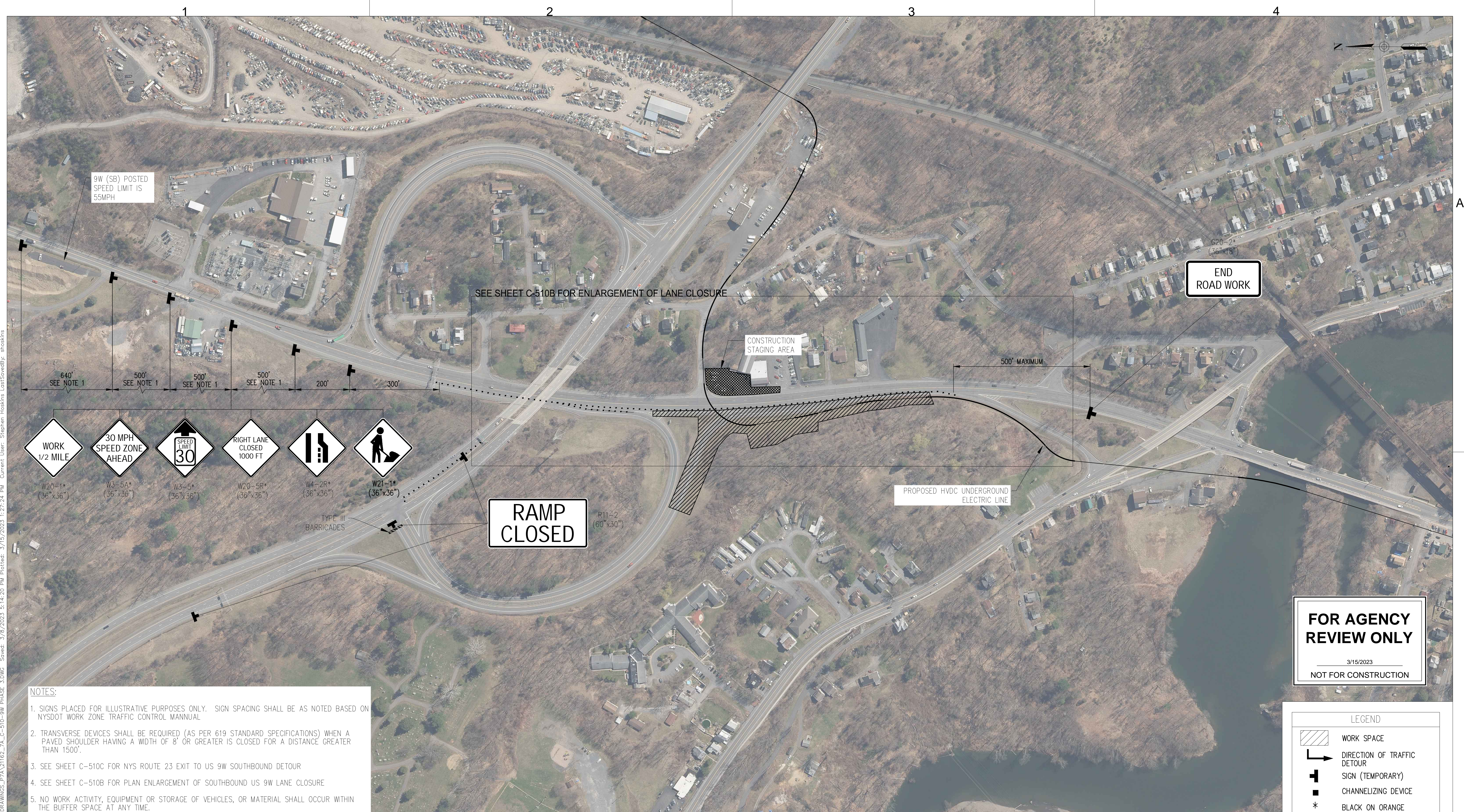
ISSUED FOR PERMITTING

No.	DATE	SUBMITTAL / REVISION DESCRIPTION	DB	APP
B	03/15/2023	DRAFT FINAL SUBMISSION	SH	TD
A	12/02/2022	60% DRAFT SUBMISSION	SH	TD

CHAMPLAIN HUDSON POWER EXPRESS
SEGMENT 11 (PACKAGE 7A) - CSX: CATSKILL
WORK ZONE TRAFFIC CONTROL
NYS ROUTE 23 TO SB US 9W DETOUR PLAN

KIEWIT PROJECT NO.	21162
EDR PROJECT NO.	21075
DRAWING NO.	C-509C
DATE	3/15/2023
OF	

DRAWN BY:	DESIGNED BY: SH	APPROVED BY: TD	SCALE	AS SHOWN	DATE	3/15/2023
			REV. NO.		B SH. NO.	OF



SEE SHEET C-510B FOR ENLARGEMENT OF LANE CLOSURE

END ROAD WORK

RAMP CLOSED

PROPOSED HVDC UNDERGROUND ELECTRIC LINE



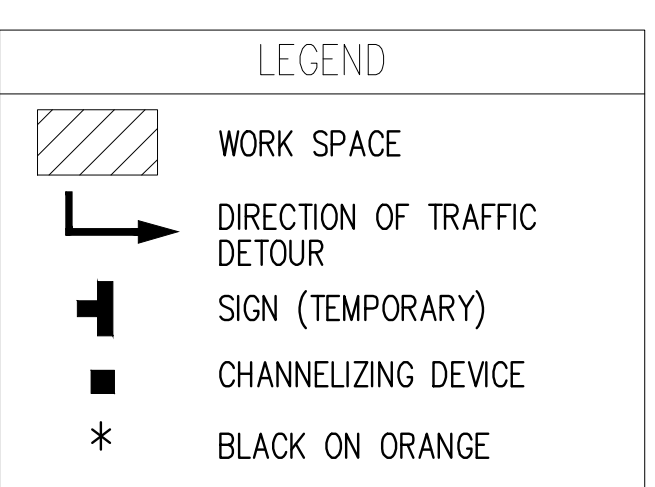
NOTES:

- SIGNS PLACED FOR ILLUSTRATIVE PURPOSES ONLY. SIGN SPACING SHALL BE AS NOTED BASED ON NYS DOT WORK ZONE TRAFFIC CONTROL MANUAL.
- TRANSVERSE DEVICES SHALL BE REQUIRED (AS PER 619 STANDARD SPECIFICATIONS) WHEN A PAVED SHOULDER HAVING A WIDTH OF 8' OR GREATER IS CLOSED FOR A DISTANCE GREATER THAN 1500'.
- SEE SHEET C-510C FOR NYS ROUTE 23 EXIT TO US 9W SOUTHBOUND DETOUR
- SEE SHEET C-510B FOR PLAN ENLARGEMENT OF SOUTHBOUND US 9W LANE CLOSURE
- NO WORK ACTIVITY, EQUIPMENT OR STORAGE OF VEHICLES, OR MATERIAL SHALL OCCUR WITHIN THE BUFFER SPACE AT ANY TIME.

FOR AGENCY REVIEW ONLY

3/15/2023

NOT FOR CONSTRUCTION



US HIGHWAY 9W SOUTHBOUND LANE CLOSURE
NTS



IT IS A VIOLATION OF LAW FOR ANY PERSON, UNLESS THEY ARE ACTING UNDER THE DIRECTION OF A LICENSED PROFESSIONAL ENGINEER, ARCHITECT, LANDSCAPE ARCHITECT OR LAND SURVEYOR TO ALTER AN ITEM IN ANY WAY. IF AN ITEM BEARING THE STAMP OF A LICENSED PROFESSIONAL IS ALTERED, THE ALTERING ENGINEER, ARCHITECT, LANDSCAPE ARCHITECT OR LAND SURVEYOR SHALL STAMP THE DOCUMENT AND INCLUDE THE NOTATION "ALTERED BY" FOLLOWED BY THEIR SIGNATURE, THE DATE OF SUCH ALTERATION, AND A SPECIFIC DESCRIPTION OF THE ALTERATION.

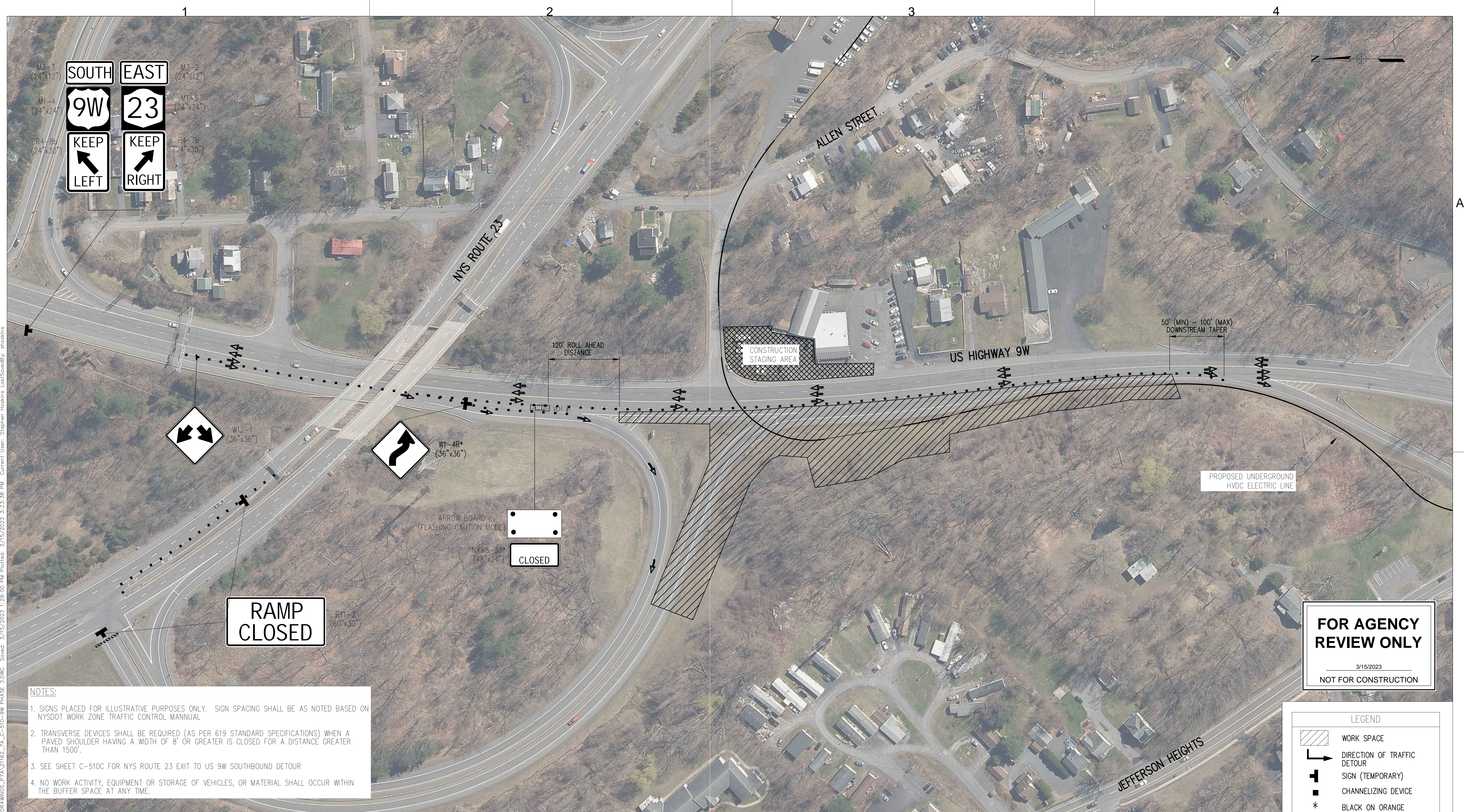
ISSUED FOR PERMITTING

No.	DATE	SUBMITTAL / REVISION DESCRIPTION	DB	APP
B	03/15/2023	DRAFT FINAL SUBMISSION	SH	TD
A	12/02/2022	60% DRAFT SUBMISSION	SH	TD

CHAMPLAIN HUDSON POWER EXPRESS
SEGMENT 11 (PACKAGE 7A) - CSX: CATSKILL
WORK ZONE TRAFFIC CONTROL
US HIGHWAY 9W (SB) LANE CLOSURE

KIEWIT PROJECT NO.	21162
EDR PROJECT NO.	21075
DRAWING NO.	C-510A
DRAWN BY:	SH
DESIGNED BY:	SH
APPROVED BY:	TD
SCALE	AS SHOWN
REV. NO.	B
DATE	3/15/2023
SH.NO.	OF

File: I:\21075 CHPE EDR\CAD\WORKING DRAWINGS_P7A\21162_7A_C-510-9W PHASE 3.DWG Saved: 3/15/2023 5:14:20 PM Plotted: 3/15/2023 1:27:24 PM Current User: Stephen Hoskins User: shoskins



FOR AGENCY REVIEW ONLY
 3/15/2023
 NOT FOR CONSTRUCTION

NOTES:

1. SIGNS PLACED FOR ILLUSTRATIVE PURPOSES ONLY. SIGN SPACING SHALL BE AS NOTED BASED ON NYS DOT WORK ZONE TRAFFIC CONTROL MANUAL
2. TRANSVERSE DEVICES SHALL BE REQUIRED (AS PER 619 STANDARD SPECIFICATIONS) WHEN A PAVED SHOULDER HAVING A WIDTH OF 8' OR GREATER IS CLOSED FOR A DISTANCE GREATER THAN 1500'.
3. SEE SHEET C-510C FOR NYS ROUTE 23 EXIT TO US 9W SOUTHBOUND DETOUR
4. NO WORK ACTIVITY, EQUIPMENT OR STORAGE OF VEHICLES, OR MATERIAL SHALL OCCUR WITHIN THE BUFFER SPACE AT ANY TIME.

US HIGHWAY 9W SOUTHBOUND LANE CLOSURE
 NTS



IT IS A VIOLATION OF LAW FOR ANY PERSON, UNLESS THEY ARE ACTING UNDER THE DIRECTION OF A LICENSED PROFESSIONAL ENGINEER, ARCHITECT, LANDSCAPE ARCHITECT OR LAND SURVEYOR TO ALTER AN ITEM IN ANY WAY. IF AN ITEM BEARING THE STAMP OF A LICENSED PROFESSIONAL IS ALTERED, THE ALTERING ENGINEER, ARCHITECT, LANDSCAPE ARCHITECT OR LAND SURVEYOR SHALL STAMP THE DOCUMENT AND INCLUDE THE NOTATION "ALTERED BY" FOLLOWED BY THEIR SIGNATURE, THE DATE OF SUCH ALTERATION, AND A SPECIFIC DESCRIPTION OF THE ALTERATION.

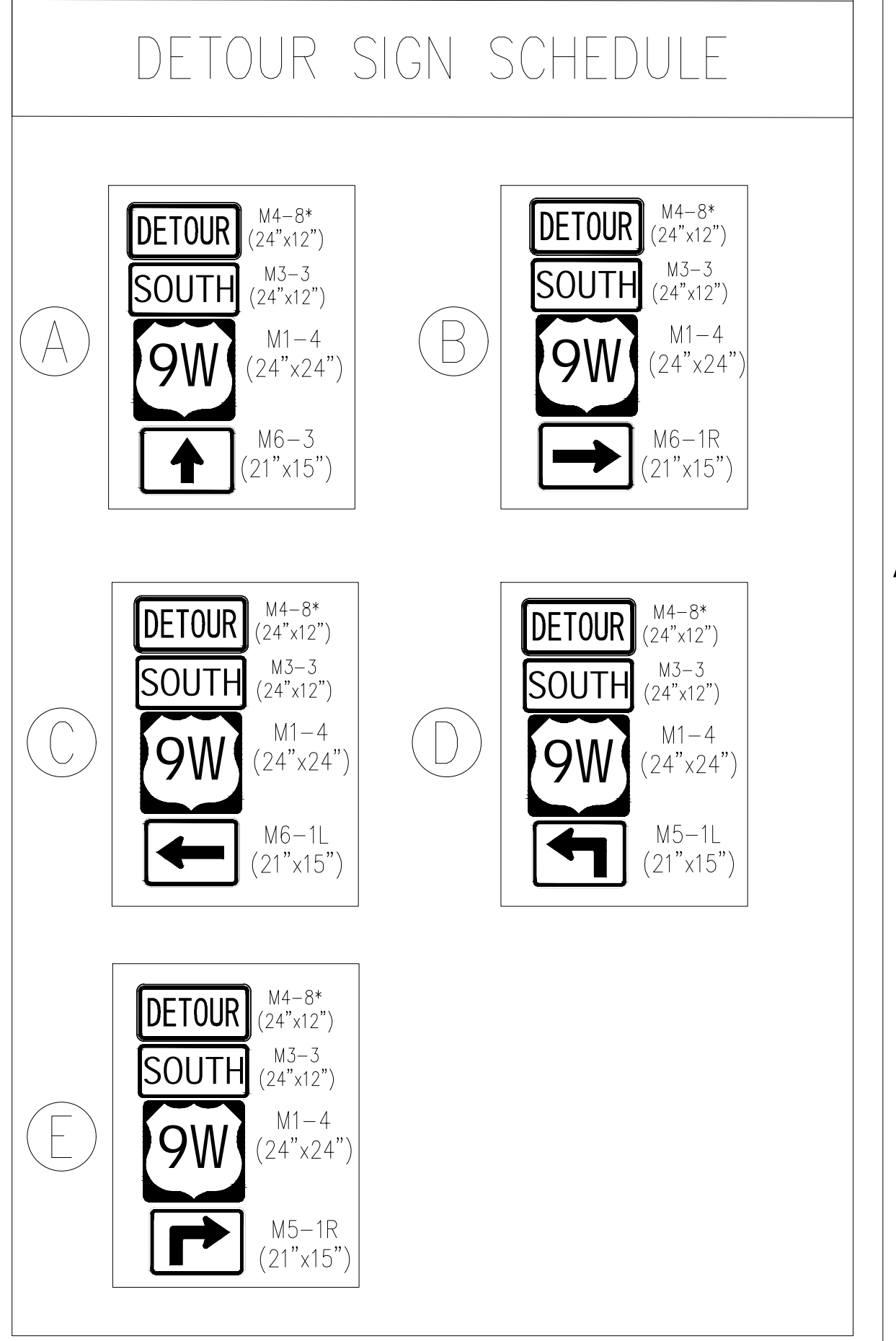
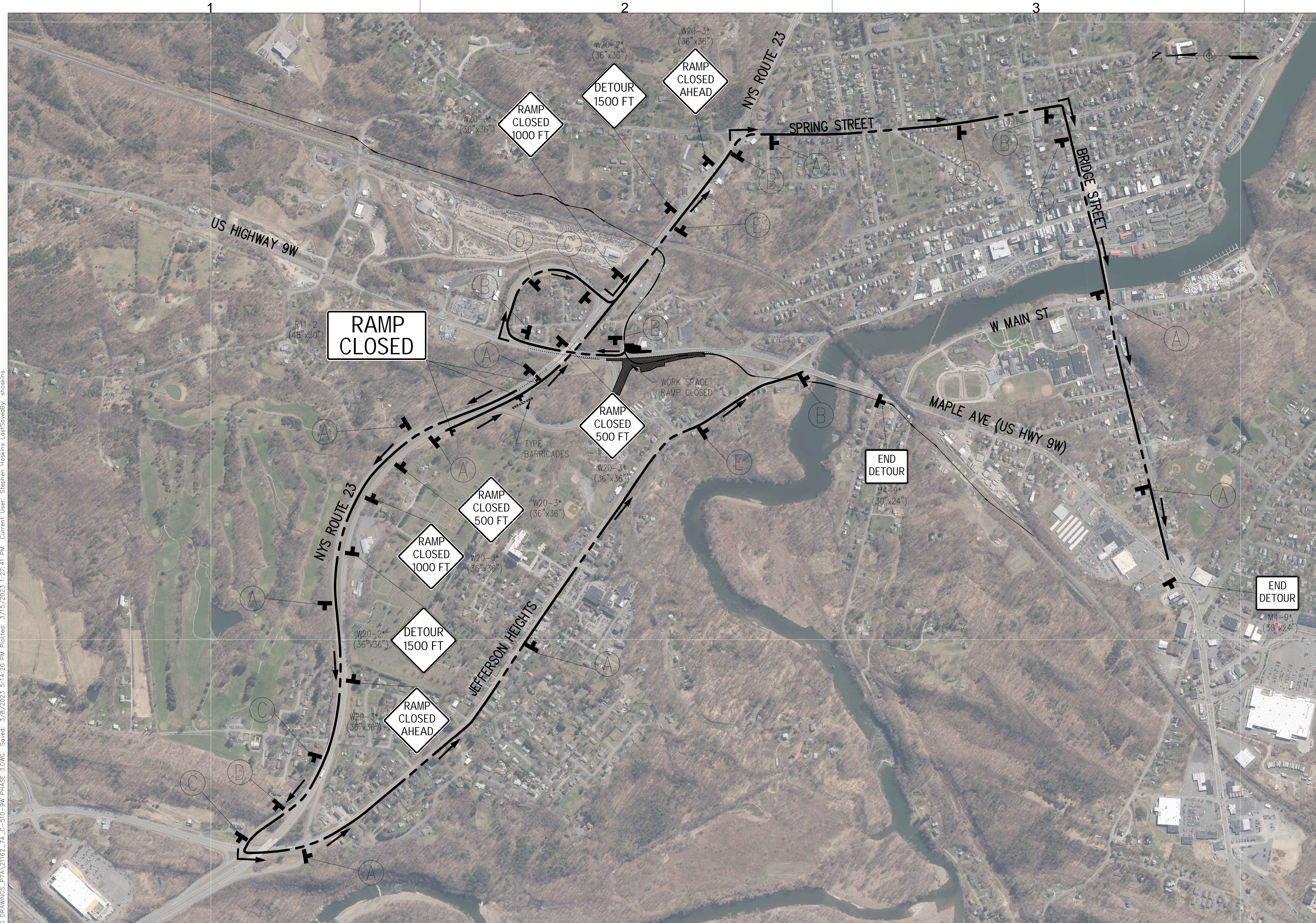
ISSUED FOR PERMITTING

No.	DATE	SUBMITTAL / REVISION DESCRIPTION	DB	APP
B	03/15/2023	DRAFT FINAL SUBMISSION	SH	TD
A	12/02/2022	60% DRAFT SUBMISSION	SH	TD

CHAMPLAIN HUDSON POWER EXPRESS
 SEGMENT 11 (PACKAGE 7A) - CSX: CATSKILL
 WORK ZONE TRAFFIC CONTROL
 US HIGHWAY 9W (SB) LANE CLOSURE

KIEWIT PROJECT NO.	21162
EDR PROJECT NO.	21075
DRAWING NO.	C-510B
DRAWN BY:	SH
DESIGNED BY:	SH
APPROVED BY:	TD
SCALE	AS SHOWN
REV. NO.	DATE
B	SH.NO.
	OF

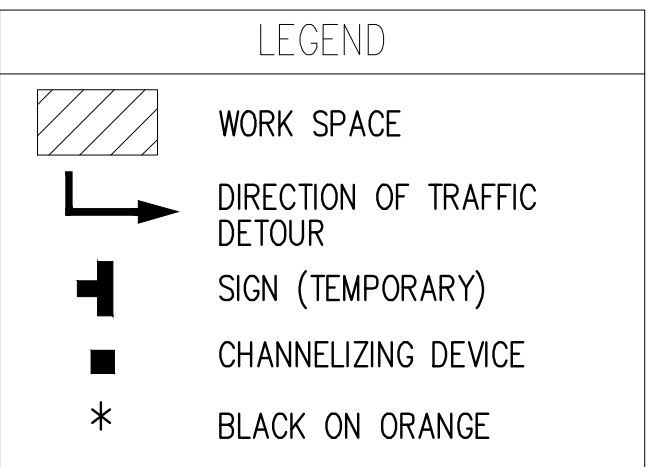
File: I:\21075 CHPE EDR\CD\WORKING DRAWINGS_P7A\21162_7A_C-510-9W PHASE 3.DWG Saved: 3/15/2023 1:29:00 PM Plotted: 3/15/2023 3:23:38 PM Current User: Stephen Hoakins Last Saved By: ehoskins



FOR AGENCY REVIEW ONLY

3/15/2023

NOT FOR CONSTRUCTION



NYS ROUTE 23 TO SOUTHBOUND US HIGHWAY 9W DETOUR PLAN
NTS



IT IS A VIOLATION OF LAW FOR ANY PERSON, UNLESS THEY ARE ACTING UNDER THE DIRECTION OF A LICENSED PROFESSIONAL ENGINEER, ARCHITECT, LANDSCAPE ARCHITECT OR LAND SURVEYOR TO ALTER AN ITEM IN ANY WAY. IF AN ITEM BEARING THE STAMP OF A LICENSED PROFESSIONAL IS ALTERED, THE ALTERING ENGINEER, ARCHITECT, LANDSCAPE ARCHITECT OR LAND SURVEYOR SHALL STAMP THE DOCUMENT AND INCLUDE THE NOTATION "ALTERED BY" FOLLOWED BY THEIR SIGNATURE, THE DATE OF SUCH ALTERATION, AND A SPECIFIC DESCRIPTION OF THE ALTERATION.

ISSUED FOR PERMITTING

No.	DATE	SUBMITTAL / REVISION DESCRIPTION	DB	APP
B	03/15/2023	DRAFT FINAL SUBMISSION	SH	TD
A	12/02/2022	60% DRAFT SUBMISSION	SH	TD

CHAMPLAIN HUDSON POWER EXPRESS
SEGMENT 11 (PACKAGE 7A) - CSX: CATSKILL
WORK ZONE TRAFFIC CONTROL
NYS ROUTE 23 TO SB US 9W DETOUR PLAN

KIEWIT PROJECT NO.	21162
EDR PROJECT NO.	21075
DRAWING NO.	C-510C
DRAWN BY:	SH
DESIGNED BY:	SH
APPROVED BY:	TD
SCALE	AS SHOWN
REV. NO.	DATE
	3/15/2023
	OF