

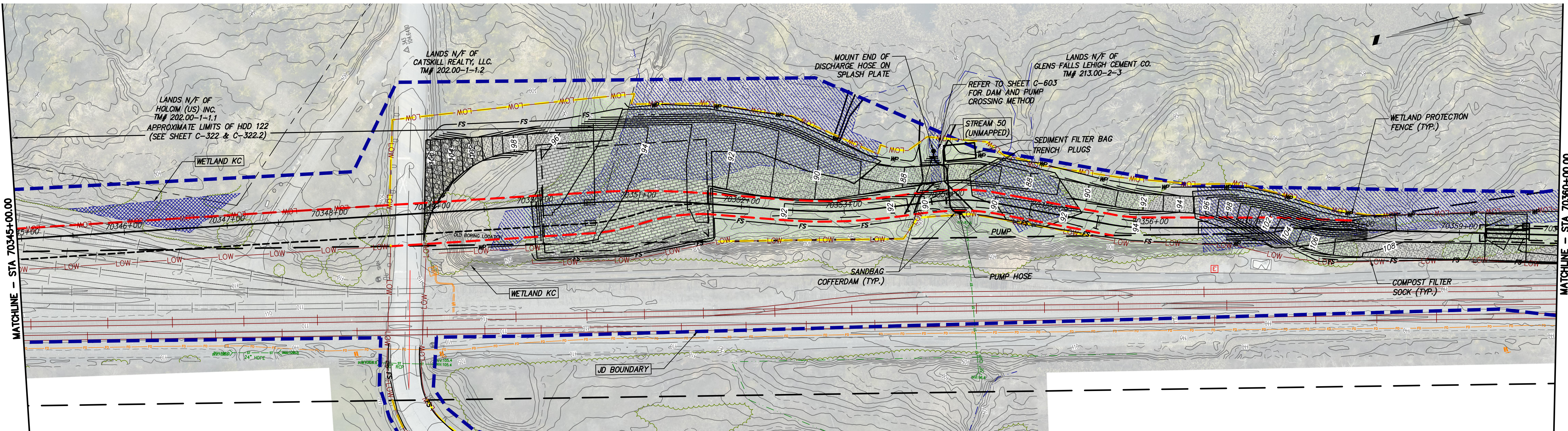
File: P:\120174-CHPE\CABLE\_INSTALL-KIEWIT\60\_CAD\20\_ENGINEERING\_CAD\_FILES\PACKAGE\_7A\NY\_ENVIRONMENTAL\_(EROSION\_CONTROL)\01\_KCE\SHEET\_FILES\21162\_7A\_C\_41B-428.DWG Saved: 3/17/2023 12:00:33 PM Plotted: 3/17/2023 12:05:29 PM Current User: Sean Lendran LastSavedBy: slendran

1

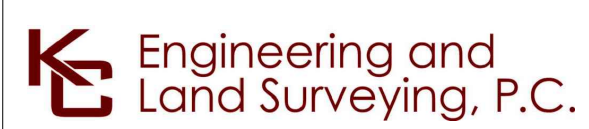
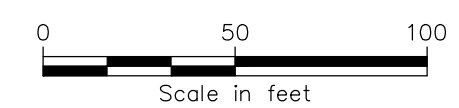
2

3

4



STA. 70345+00.00 TO STA. 70360+00.00 PLAN VIEW  
SCALE: 1" = 50'



IT IS A VIOLATION OF LAW FOR ANY PERSON, UNLESS THEY ARE ACTING UNDER THE DIRECTION OF A LICENSED PROFESSIONAL ENGINEER, ARCHITECT, LANDSCAPE ARCHITECT OR LAND SURVEYOR TO ALTER AN ITEM IN ANY WAY. IF AN ITEM BEARING THE STAMP OF A LICENSED PROFESSIONAL IS ALTERED, THE ALTERING ENGINEER, ARCHITECT, LANDSCAPE ARCHITECT OR LAND SURVEYOR SHALL STAMP THE DOCUMENT AND INCLUDE THE NOTATION "ALTERED BY" FOLLOWED BY THEIR SIGNATURE, THE DATE OF SUCH ALTERATION, AND A SPECIFIC DESCRIPTION OF THE ALTERATION.

ISSUED FOR PERMITTING

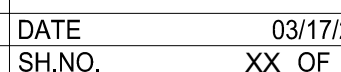
F	03/17/2023	FINAL SUBMISSION	BL	JL
E	01/24/2023	DRAFT FINAL SUBMISSION	RB	JL
D	11/16/2022	PRELIMINARY DRAFT FINAL SUBMISSION	RB	JL
	04/29/2022	60% DESIGN SUBMISSION	RB	JL
B	03/22/2022	PRELIMINARY DESIGN DEVELOPMENT	BV	TK
A	02/14/2022	PRELIMINARY PROGRESS	BV	TK
No.	DATE	SUBMITTAL / REVISION DESCRIPTION	DB	APP

CHAMPLAIN HUDSON POWER EXPRESS  
SEGMENT 11 (PACKAGE 7A) - CSX: CATSKILL  
EROSION AND SEDIMENT CONTROL PLAN  
STA. 70345+00.00 TO STA. 70360+00.00

DRAWN BY: BL DESIGNED BY: SL APPROVED BY: JL SCALE AS SHOWN REV. NO. F SH. NO. XX OF

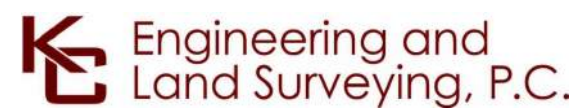
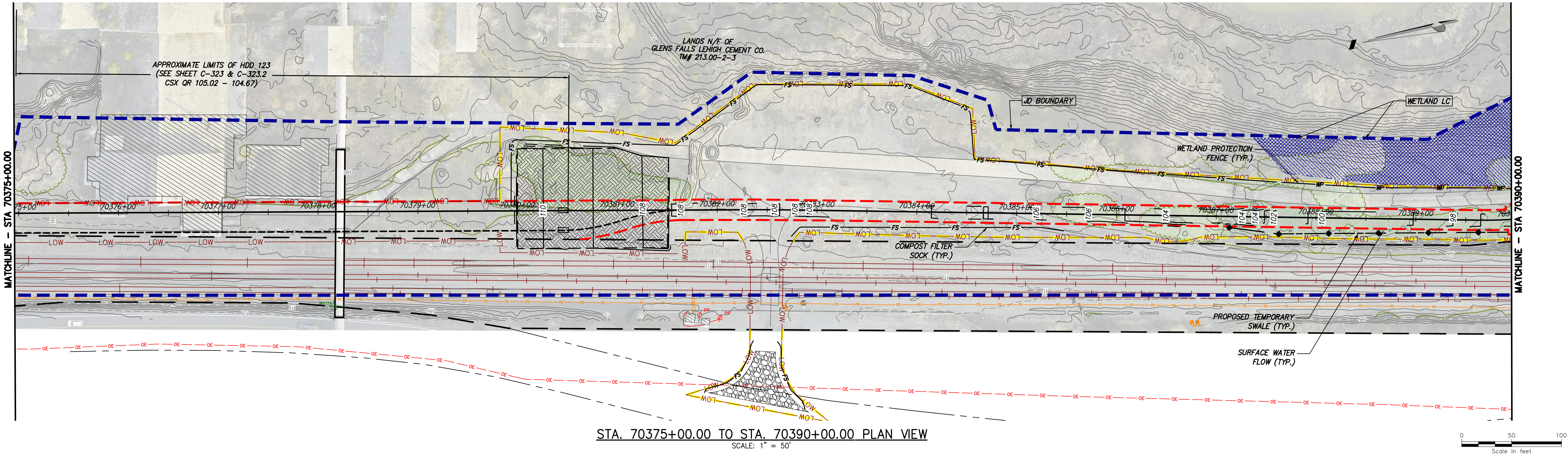
KIEWIT PROJECT NO.	21162
KC PROJECT NO.	120174
DRAWING NO.	C-421
DATE	03/17/2023
SH. NO.	XX OF







File: P:\120174-CHPE\CABLE\_INSTALL-KIEWIT\60\_CAD\20\_ENGINEERING\_CAD\_FILES\PACKAGE\_7A\NY\_ENVIRONMENTAL\_(EROSION\_CONTROL)\01\_KCE\SHEET\_FILES\21162\_7A\_C\_418-428.DWG Saved: 3/17/2023 10:59:02 AM Plotted: 3/17/2023 10:59:02 AM Current User: Sean Leland Last Saved By: slandhan



IT IS A VIOLATION OF LAW FOR ANY PERSON, UNLESS THEY ARE ACTING UNDER THE DIRECTION OF A LICENSED PROFESSIONAL ENGINEER, ARCHITECT, LANDSCAPE ARCHITECT OR LAND SURVEYOR TO ALTER AN ITEM IN ANY WAY. IF AN ITEM BEARING THE STAMP OF A LICENSED PROFESSIONAL IS ALTERED, THE ALTERING ENGINEER, ARCHITECT, LANDSCAPE ARCHITECT OR LAND SURVEYOR SHALL STAMP THE DOCUMENT AND INCLUDE THE NOTATION "ALTERED BY" FOLLOWED BY THEIR SIGNATURE, THE DATE OF SUCH ALTERATION, AND A SPECIFIC DESCRIPTION OF THE ALTERATION.

ISSUED FOR PERMITTING

F	03/17/2023	FINAL SUBMISSION	BL	JL
E	01/24/2023	DRAFT FINAL SUBMISSION	RB	JL
D	11/16/2022	PRELIMINARY DRAFT FINAL SUBMISSION	RB	JL
	04/29/2022	60% DESIGN SUBMISSION	RB	JL
B	03/22/2022	PRELIMINARY DESIGN DEVELOPMENT	BV	TK
A	02/14/2022	PRELIMINARY PROGRESS	BV	TK
No.	DATE	SUBMITTAL / REVISION DESCRIPTION	DB	APP

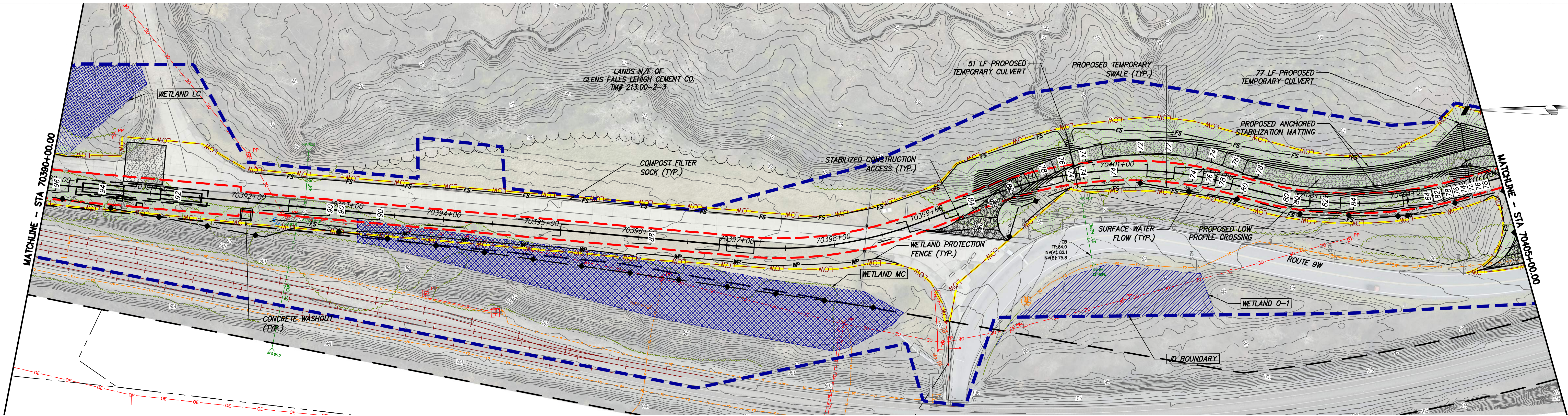
CHAMPLAIN HUDSON POWER EXPRESS  
SEGMENT 11 (PACKAGE 7A) - CSX: CATSKILL  
EROSION AND SEDIMENT CONTROL PLAN  
STA. 70375+00.00 TO STA. 70390+00.00

DRAWN BY:	BL	DESIGNED BY:	SL	APPROVED BY:	JL	SCALE	AS SHOWN	DATE	03/17/2023
						REV. NO.	F	SH. NO.	XX OF

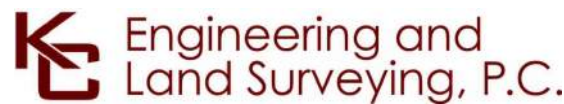
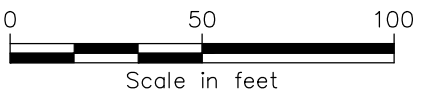
KIEWIT PROJECT NO.	21162
KC PROJECT NO.	120174
DRAWING NO.	C-423



File: P:\120174-CHPE-CABLE\_INSTALL-KIEWIT\60\_CAD\20\_ENGINEERING\_CAD\_FILES\PACKAGE\_7A\NY\_ENVIRONMENTAL\_(EROSION\_CONTROL)\01\_KCE\SHEET\_FILES\21162\_7A\_C\_418-428.DWG Saved: 3/17/2023 10:33:13 AM Plotted: 3/17/2023 11:03:01 AM Current User: Sean Lenthon LastSavedBy: alendhan



STA. 70390+00.00 TO STA. 70405+00.00 PLAN VIEW  
SCALE: 1" = 50'



IT IS A VIOLATION OF LAW FOR ANY PERSON, UNLESS THEY ARE ACTING UNDER THE DIRECTION OF A LICENSED PROFESSIONAL ENGINEER, ARCHITECT, LANDSCAPE ARCHITECT OR LAND SURVEYOR TO ALTER AN ITEM IN ANY WAY. IF AN ITEM BEARING THE STAMP OF A LICENSED PROFESSIONAL IS ALTERED, THE ALTERING ENGINEER, ARCHITECT, LANDSCAPE ARCHITECT OR LAND SURVEYOR SHALL STAMP THE DOCUMENT AND INCLUDE THE NOTATION "ALTERED BY" FOLLOWED BY THEIR SIGNATURE, THE DATE OF SUCH ALTERATION, AND A SPECIFIC DESCRIPTION OF THE ALTERATION.

ISSUED FOR PERMITTING

F	03/17/2023	FINAL SUBMISSION	BL	JL
E	01/24/2023	DRAFT FINAL SUBMISSION	RB	JL
D	11/16/2022	PRELIMINARY DRAFT FINAL SUBMISSION	RB	JL
	04/29/2022	60% DESIGN SUBMISSION	RB	JL
B	03/22/2022	PRELIMINARY DESIGN DEVELOPMENT	BV	TK
A	02/14/2022	PRELIMINARY PROGRESS	BV	TK
No.	DATE	SUBMITTAL / REVISION DESCRIPTION	DB	APP

CHAMPLAIN HUDSON POWER EXPRESS  
SEGMENT 11 (PACKAGE 7A) - CSX: CATSKILL  
EROSION AND SEDIMENT CONTROL PLAN  
STA. 70390+00.00 TO STA. 70405+00.00

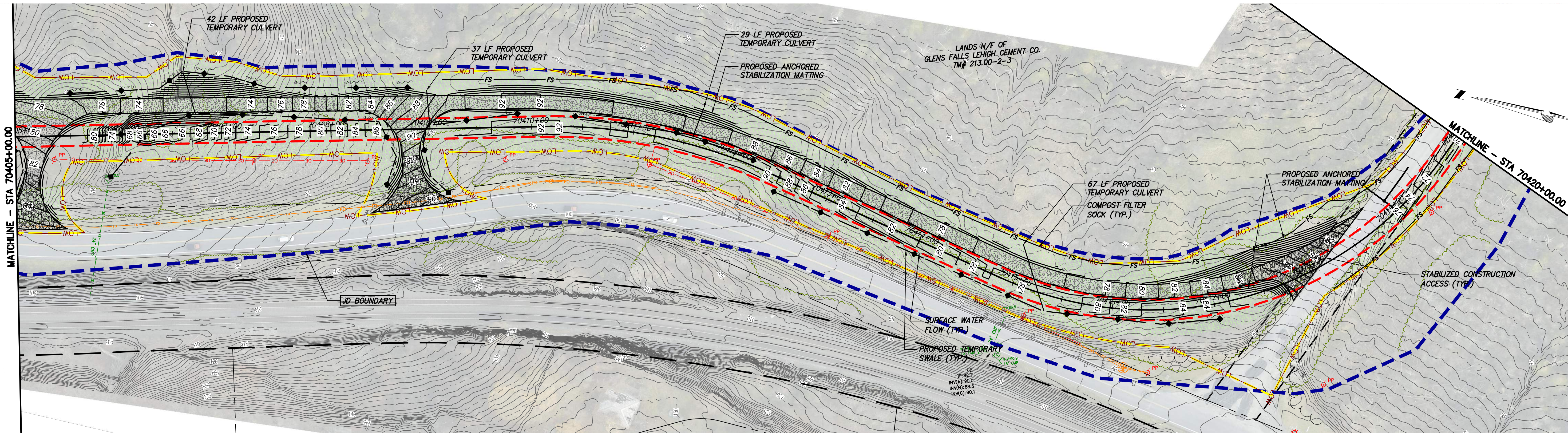
DRAWN BY:	BL	DESIGNED BY:	SL	APPROVED BY:	JL	SCALE	AS SHOWN	DATE	03/17/2023
						REV. NO.	F	SH. NO.	XX OF

KIEWIT PROJECT NO.	21162
KC PROJECT NO.	120174
DRAWING NO.	

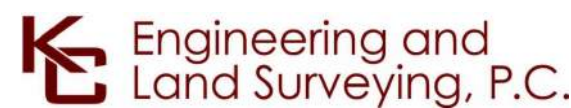
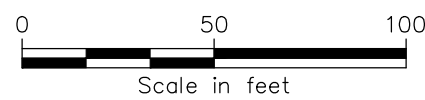
C-424



File: P:\120174-CHPE-CABLE\_INSTALL-KIEWIT\60\_CAD\20\_ENGINEERING\_CAD\_FILES\PACKAGE\_7A\NY\_ENVIRONMENTAL\_(EROSION\_CONTROL)\01\_KCE\SHEET\_FILES\21162\_7A\_C\_418-428.DWG Saved: 3/17/2023 10:33:13 AM Plotted: 3/17/2023 11:07:05 AM Current User: Sean Lenahan LastSavedBy: slenahan



STA. 70405+00.00 TO STA. 70420+00.00 PLAN VIEW  
SCALE: 1" = 50'



IT IS A VIOLATION OF LAW FOR ANY PERSON, UNLESS THEY ARE ACTING UNDER THE DIRECTION OF A LICENSED PROFESSIONAL ENGINEER, ARCHITECT, LANDSCAPE ARCHITECT OR LAND SURVEYOR TO ALTER AN ITEM IN ANY WAY. IF AN ITEM BEARING THE STAMP OF A LICENSED PROFESSIONAL IS ALTERED, THE ALTERING ENGINEER, ARCHITECT, LANDSCAPE ARCHITECT OR LAND SURVEYOR SHALL STAMP THE DOCUMENT AND INCLUDE THE NOTATION "ALTERED BY" FOLLOWED BY THEIR SIGNATURE, THE DATE OF SUCH ALTERATION, AND A SPECIFIC DESCRIPTION OF THE ALTERATION.

ISSUED FOR PERMITTING

F	03/17/2023	FINAL SUBMISSION	BL	JL
E	01/24/2023	DRAFT FINAL SUBMISSION	RB	JL
D	11/16/2022	PRELIMINARY DRAFT FINAL SUBMISSION	RB	JL
	04/29/2022	60% DESIGN SUBMISSION	RB	JL
B	03/22/2022	PRELIMINARY DESIGN DEVELOPMENT	BV	TK
A	02/14/2022	PRELIMINARY PROGRESS	BV	TK
No.	DATE	SUBMITTAL / REVISION DESCRIPTION	DB	APP

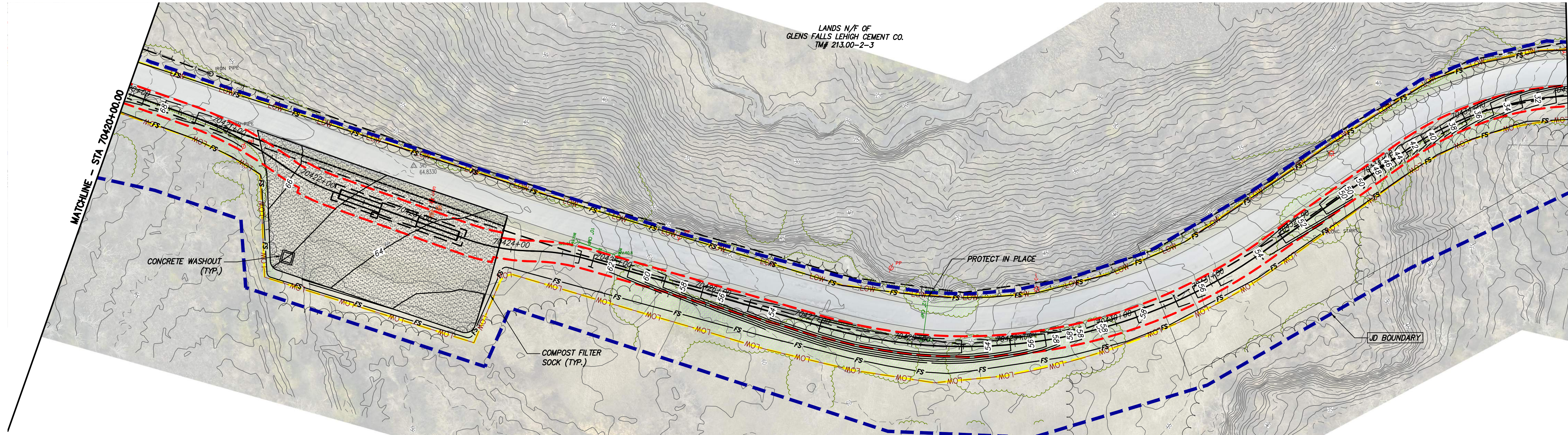
CHAMPLAIN HUDSON POWER EXPRESS  
SEGMENT 11 (PACKAGE 7A) - CSX: CATSKILL  
EROSION AND SEDIMENT CONTROL PLAN  
STA. 70405+00.00 TO STA. 70420+00.00

DRAWN BY:	BL	DESIGNED BY:	SL	APPROVED BY:	JL	SCALE	AS SHOWN	DATE	03/17/2023
						REV. NO.	F	SH. NO.	XX OF

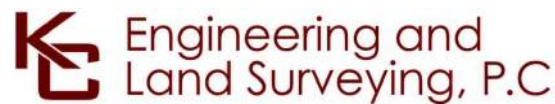
KIEWIT PROJECT NO.	21162
KC PROJECT NO.	120174
DRAWING NO.	C-425



File: P:\120174-CHPE-CABLE\_INSTALL-KIEWIT\60\_CAD\20\_ENGINEERING\_CAD\_FILES\PACKAGE\_7A\NY\_ENVIRONMENTAL\_(EROSION\_CONTROL)\01\_KCE\SHEET\_FILES\21162\_7A\_C\_418-426.DWG Saved: 3/17/2023 10:33:13 AM Plotted: 3/17/2023 11:11:05 AM Current User: Sean Lenahan LastSavedBy: slenahan



STA. 70420+00.00 TO STA. 70435+00.00 PLAN VIEW  
SCALE: 1" = 50'



IT IS A VIOLATION OF LAW FOR ANY PERSON, UNLESS THEY ARE ACTING UNDER THE DIRECTION OF A LICENSED PROFESSIONAL ENGINEER, ARCHITECT, LANDSCAPE ARCHITECT OR LAND SURVEYOR TO ALTER AN ITEM IN ANY WAY. IF AN ITEM BEARING THE STAMP OF A LICENSED PROFESSIONAL IS ALTERED, THE ALTERING ENGINEER, ARCHITECT, LANDSCAPE ARCHITECT OR LAND SURVEYOR SHALL STAMP THE DOCUMENT AND INCLUDE THE NOTATION "ALTERED BY" FOLLOWED BY THEIR SIGNATURE, THE DATE OF SUCH ALTERATION, AND A SPECIFIC DESCRIPTION OF THE ALTERATION.

ISSUED FOR PERMITTING

F	03/17/2023	FINAL SUBMISSION	BL	JL
E	01/24/2023	DRAFT FINAL SUBMISSION	RB	JL
D	11/16/2022	PRELIMINARY DRAFT FINAL SUBMISSION	RB	JL
	04/29/2022	60% DESIGN SUBMISSION	RB	JL
B	03/22/2022	PRELIMINARY DESIGN DEVELOPMENT	BV	TK
A	02/14/2022	PRELIMINARY PROGRESS	BV	TK
No.	DATE	SUBMITTAL / REVISION DESCRIPTION	DB	APP

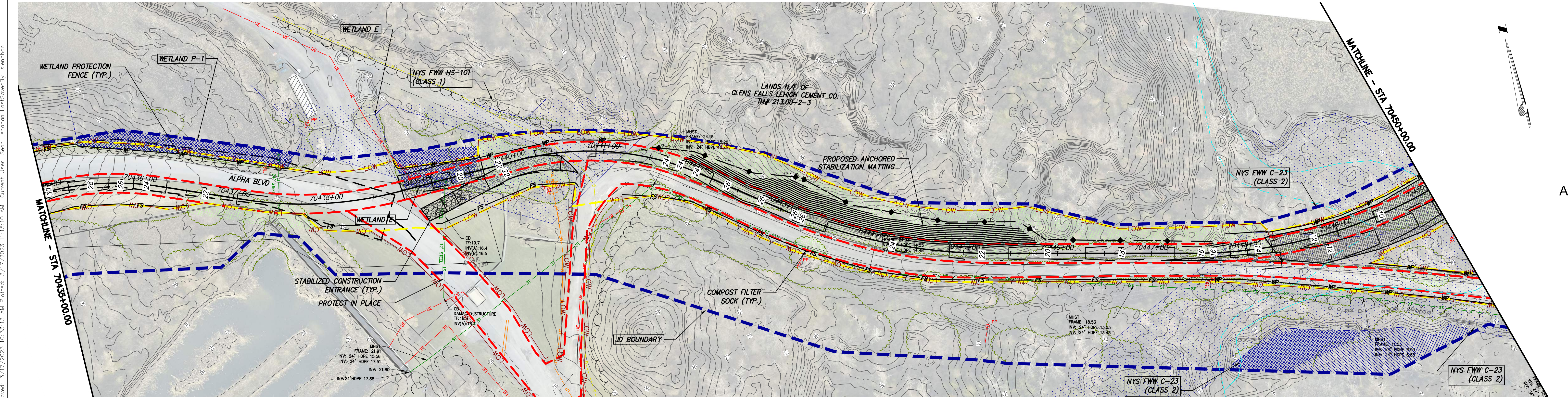
CHAMPLAIN HUDSON POWER EXPRESS  
SEGMENT 11 (PACKAGE 7A) - CSX: CATSKILL  
EROSION AND SEDIMENT CONTROL PLAN  
STA. 70420+00.00 TO STA. 70435+00.00

KIEWIT PROJECT NO.	21162
KC PROJECT NO.	120174
DRAWING NO.	C-426
DATE	03/17/2023
SH.NO.	XX OF

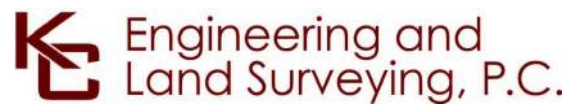
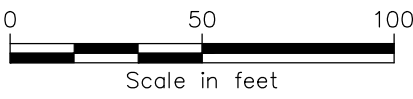
DRAWN BY:	BL	DESIGNED BY:	SL	APPROVED BY:	JL	SCALE	AS SHOWN	DATE	03/17/2023
						REV. NO.	F	SH.NO.	XX OF



File: P:\120174-CHPE-CABLE\_INSTALL-KIEWIT\60\_CAD\20\_ENGINEERING\_CAD\_FILES\PACKAGE\_7A\NY\_ENVIRONMENTAL\_(EROSION\_CONTROL)\01\_KCE\SHEET\_FILES\21162\_7A\_C\_418-428.DWG Saved: 3/17/2023 10:33:13 AM Plotted: 3/17/2023 11:15:10 AM Current User: Sean Lenahan LastSavedBy: slenahan



STA. 70435+00.00 TO STA. 70450+00.00 PLAN VIEW  
SCALE: 1" = 50'



IT IS A VIOLATION OF LAW FOR ANY PERSON, UNLESS THEY ARE ACTING UNDER THE DIRECTION OF A LICENSED PROFESSIONAL ENGINEER, ARCHITECT, LANDSCAPE ARCHITECT OR LAND SURVEYOR TO ALTER AN ITEM IN ANY WAY. IF AN ITEM BEARING THE STAMP OF A LICENSED PROFESSIONAL IS ALTERED, THE ALTERING ENGINEER, ARCHITECT, LANDSCAPE ARCHITECT OR LAND SURVEYOR SHALL STAMP THE DOCUMENT AND INCLUDE THE NOTATION "ALTERED BY" FOLLOWED BY THEIR SIGNATURE, THE DATE OF SUCH ALTERATION, AND A SPECIFIC DESCRIPTION OF THE ALTERATION.

ISSUED FOR PERMITTING

F	03/17/2023	FINAL SUBMISSION	BL	JL
E	01/24/2023	DRAFT FINAL SUBMISSION	RB	JL
D	11/16/2022	PRELIMINARY DRAFT FINAL SUBMISSION	RB	JL
	04/29/2022	60% DESIGN SUBMISSION	RB	JL
B	03/22/2022	PRELIMINARY DESIGN DEVELOPMENT	BV	TK
A	02/14/2022	PRELIMINARY PROGRESS	BV	TK
No.	DATE	SUBMITTAL / REVISION DESCRIPTION	DB	APP

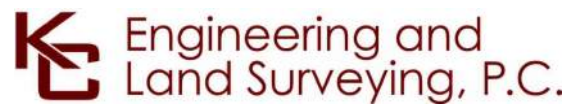
CHAMPLAIN HUDSON POWER EXPRESS  
SEGMENT 11 (PACKAGE 7A) - CSX: CATSKILL  
EROSION AND SEDIMENT CONTROL PLAN  
STA. 70435+00.00 TO STA. 70450+00.00

DRAWN BY:	BL	DESIGNED BY:	SL	APPROVED BY:	JL	SCALE	AS SHOWN	DATE	03/17/2023
						REV. NO.	F	SH. NO.	XX OF

KIEWIT PROJECT NO.	21162
KC PROJECT NO.	120174
DRAWING NO.	C-427
DATE	03/17/2023
SH. NO.	XX OF



File: P:\120174-CHPE-CABLE\_INSTALL-KIEWIT\60\_CAD\20\_ENGINEERING\_CAD\_FILES\PACKAGE\_7A\NY\_ENVIRONMENTAL\_(EROSION\_CONTROL)\01\_KCE\SHEET\_FILES\21162\_7A\_C\_418-428.DWG Saved: 3/17/2023 10:33:13 AM Plotted: 3/17/2023 11:19:13 AM Current User: Sean Lenahan LastSavedBy: slenahan



IT IS A VIOLATION OF LAW FOR ANY PERSON, UNLESS THEY ARE ACTING UNDER THE DIRECTION OF A LICENSED PROFESSIONAL ENGINEER, ARCHITECT, LANDSCAPE ARCHITECT OR LAND SURVEYOR TO ALTER AN ITEM IN ANY WAY. IF AN ITEM BEARING THE STAMP OF A LICENSED PROFESSIONAL IS ALTERED, THE ALTERING ENGINEER, ARCHITECT, LANDSCAPE ARCHITECT OR LAND SURVEYOR SHALL STAMP THE DOCUMENT AND INCLUDE THE NOTATION "ALTERED BY" FOLLOWED BY THEIR SIGNATURE, THE DATE OF SUCH ALTERATION, AND A SPECIFIC DESCRIPTION OF THE ALTERATION.

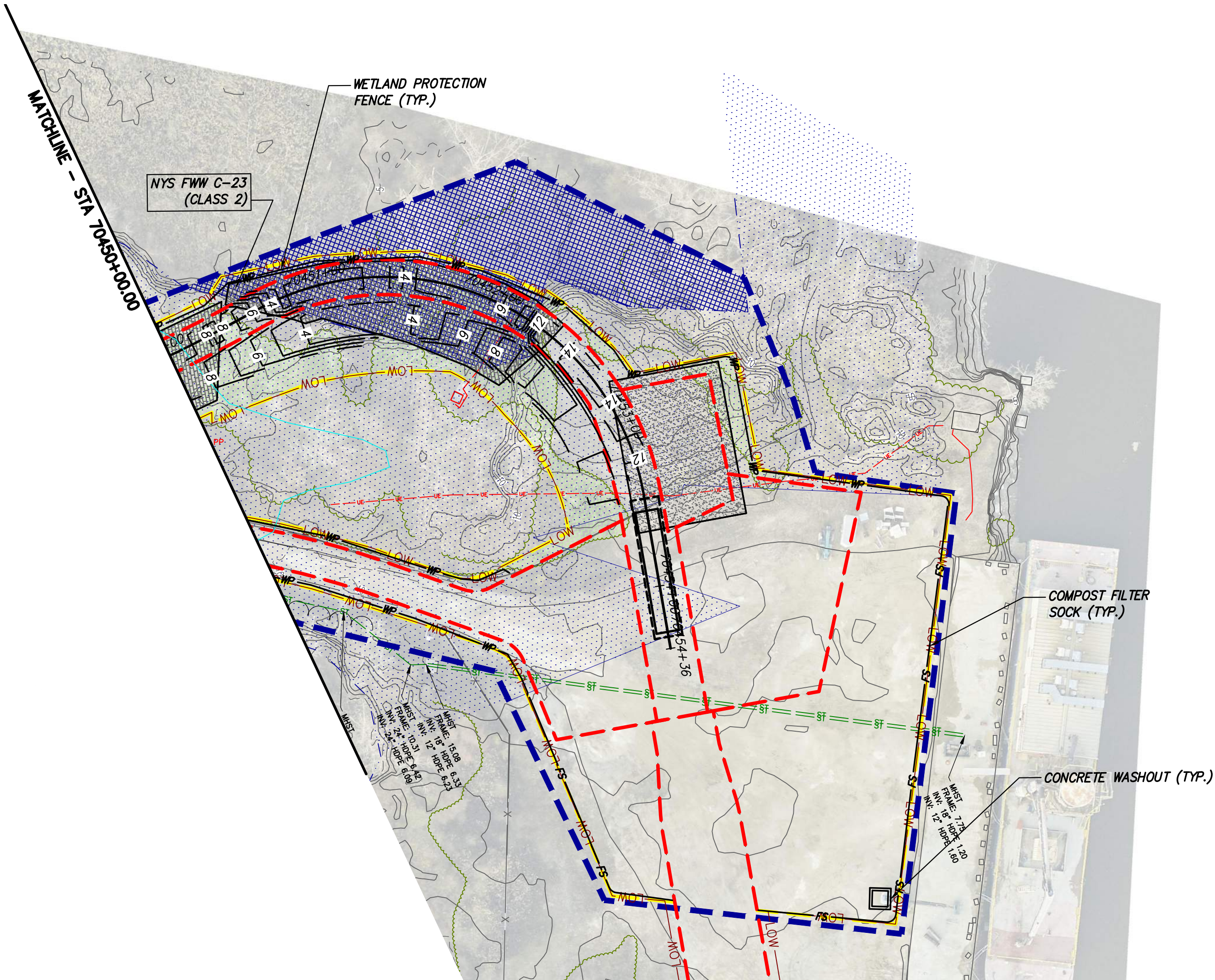
ISSUED FOR PERMITTING

F	03/17/2023	FINAL SUBMISSION	BL	JL
E	01/24/2023	DRAFT FINAL SUBMISSION	RB	JL
D	11/16/2022	PRELIMINARY DRAFT FINAL SUBMISSION	RB	JL
	04/29/2022	60% DESIGN SUBMISSION	RB	JL
B	03/22/2022	PRELIMINARY DESIGN DEVELOPMENT	BV	TK
A	02/14/2022	PRELIMINARY PROGRESS	BV	TK
No.	DATE	SUBMITTAL / REVISION DESCRIPTION	DB	APP

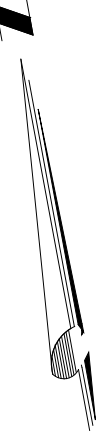
CHAMPLAIN HUDSON POWER EXPRESS  
SEGMENT 11 (PACKAGE 7A) - CSX: CATSKILL  
EROSION AND SEDIMENT CONTROL PLAN  
STA. 70450+00.00 TO STA. 70454+30.05

DRAWN BY:	BL	DESIGNED BY:	SL	APPROVED BY:	JL	SCALE	AS SHOWN	DATE	03/17/2023
						REV. NO.	F	SH.NO.	XX OF

C-428

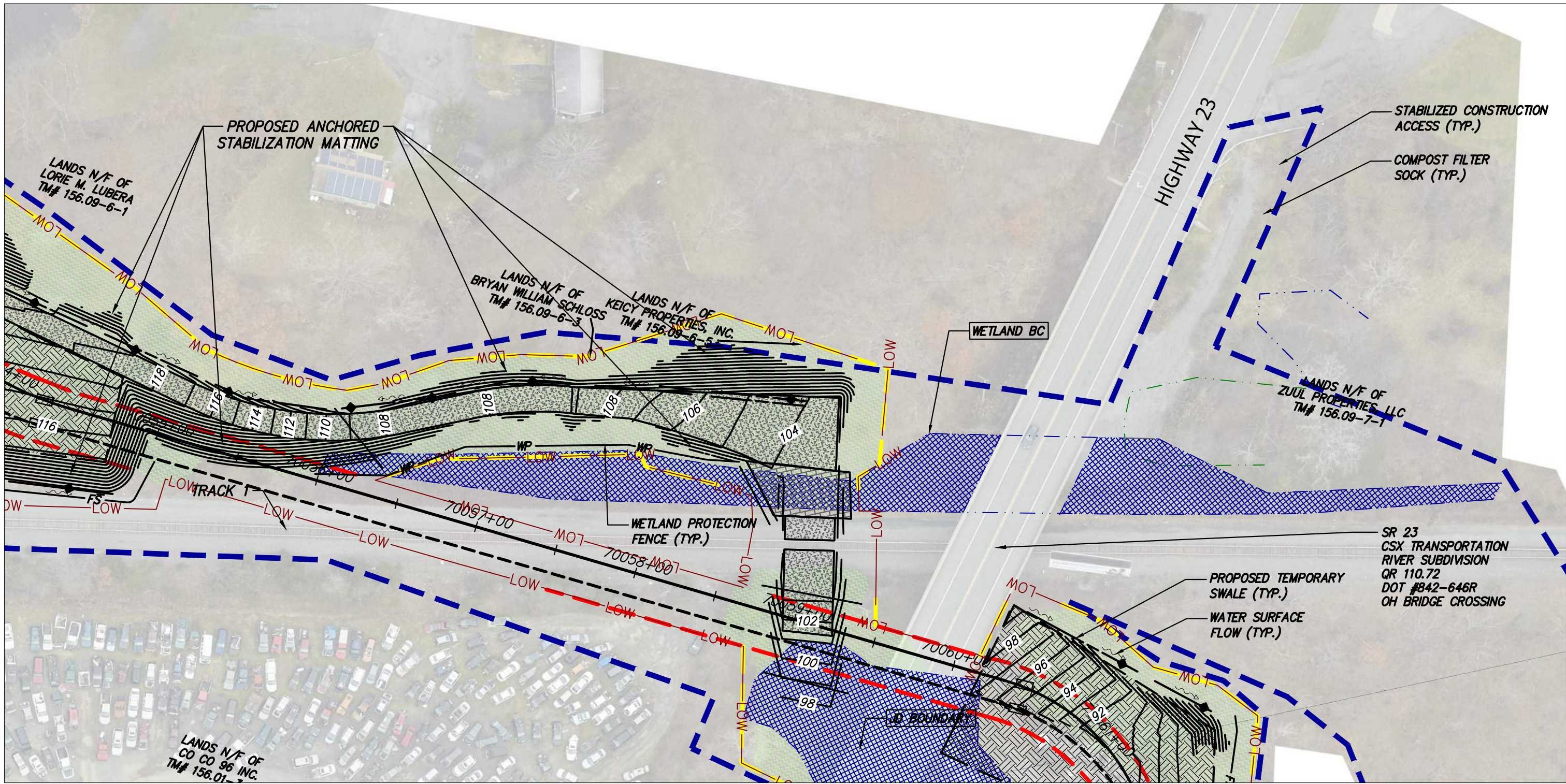


STA. 70450+00.00 TO STA. 70454+30.05 PLAN VIEW  
SCALE: 1" = 50'



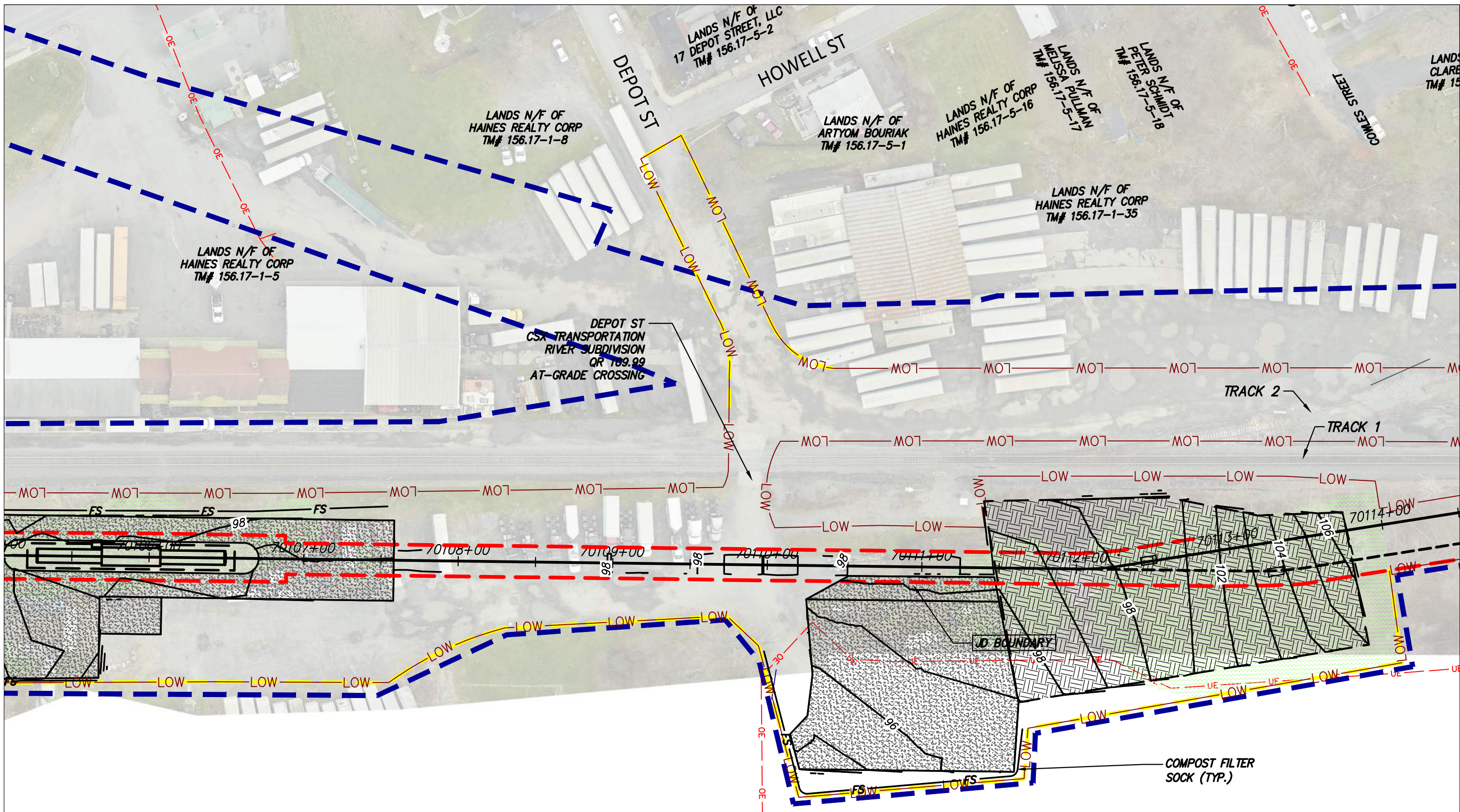
A





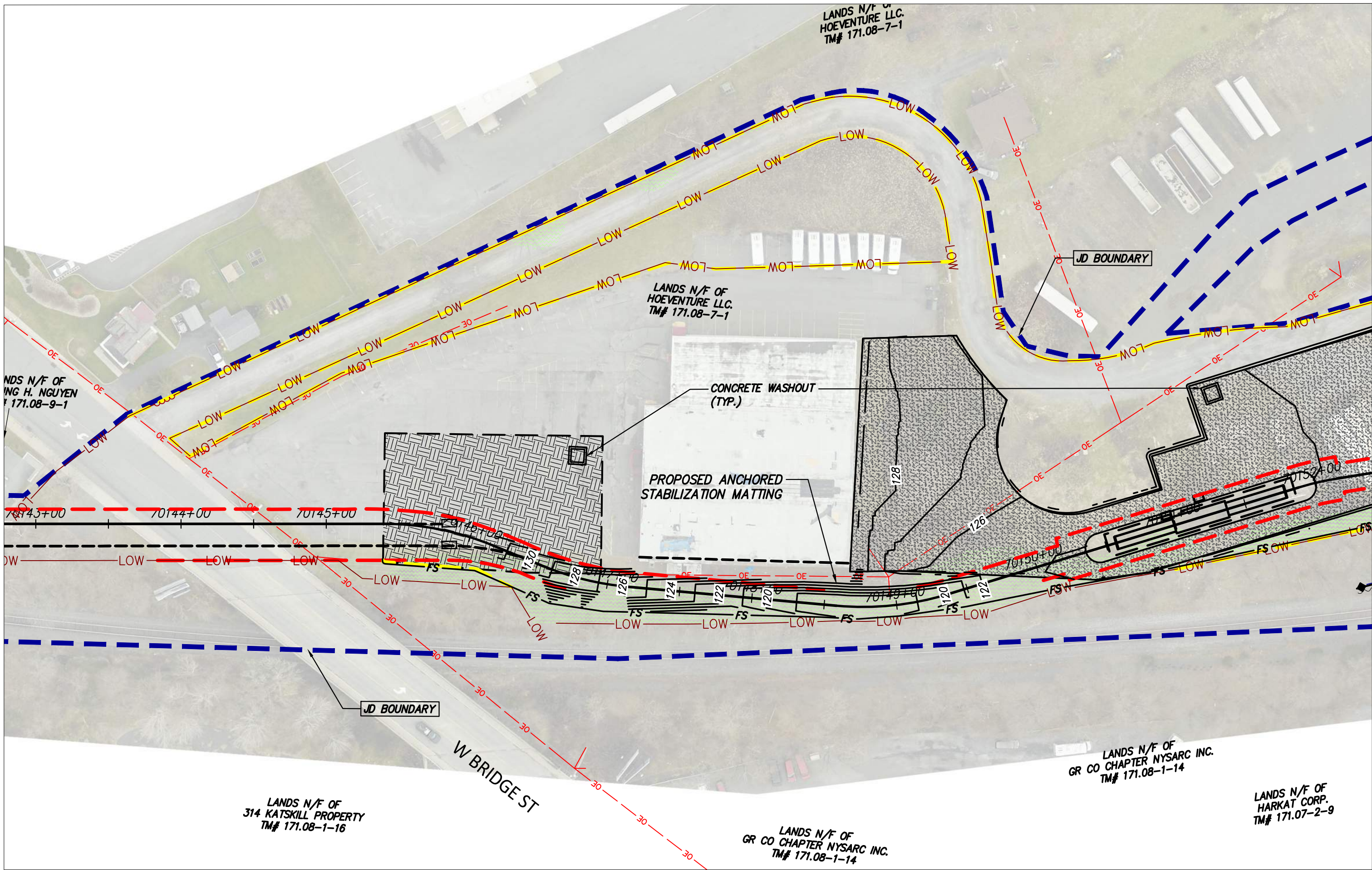
OFF SITE ACCESS OFF HIGHWAY 23 – STA 70060+00

SCALE: 1" = 60'



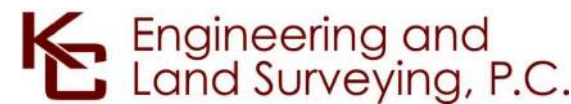
OFF SITE ACCESS OFF DEPOT STREET – STA 70110+00

SCALE: 1" = 60'



OFF SITE ACCESS OFF WEST BRIDGE ST. – STA 70145+00

SCALE: 1" = 60'



IT IS A VIOLATION OF LAW FOR ANY PERSON, UNLESS THEY ARE ACTING UNDER THE DIRECTION OF A LICENSED PROFESSIONAL ENGINEER, ARCHITECT, LANDSCAPE ARCHITECT OR LAND SURVEYOR TO ALTER AN ITEM IN ANY WAY, IF AN ITEM BEARING THE STAMP OF A LICENSED PROFESSIONAL IS ALTERED. THE ALTERING ENGINEER, ARCHITECT, LANDSCAPE ARCHITECT OR LAND SURVEYOR SHALL STAMP THE DOCUMENT AND INCLUDE THE NOTATION "ALTERED BY" FOLLOWED BY THEIR SIGNATURE, THE DATE OF SUCH ALTERATION, AND A SPECIFIC DESCRIPTION OF THE ALTERATION.

ISSUED FOR PERMITTING

F	03/17/2023	FINAL SUBMISSION	BL	JL
E	01/24/2023	DRAFT FINAL SUBMISSION	RB	JL
D	11/16/2022	PRELIMINARY DRAFT FINAL SUBMISSION	RB	JL
	04/29/2022	60% DESIGN SUBMISSION	RB	JL
B	03/22/2022	PRELIMINARY DESIGN DEVELOPMENT	BV	TK
A	02/14/2022	PRELIMINARY PROGRESS	BV	TK
No.	DATE	SUBMITTAL / REVISION DESCRIPTION	DB	APP

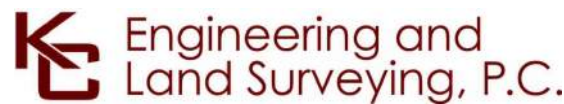
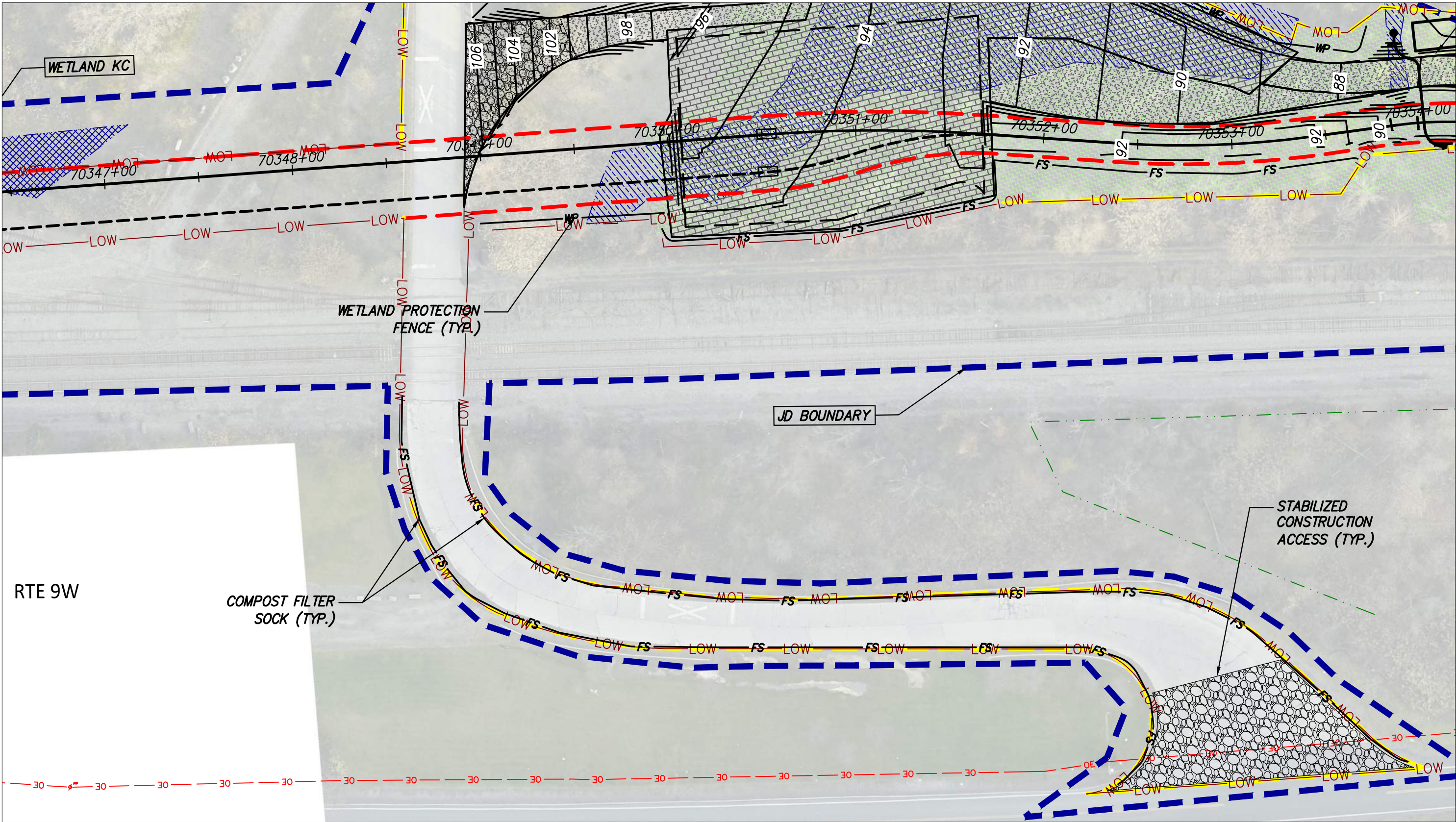
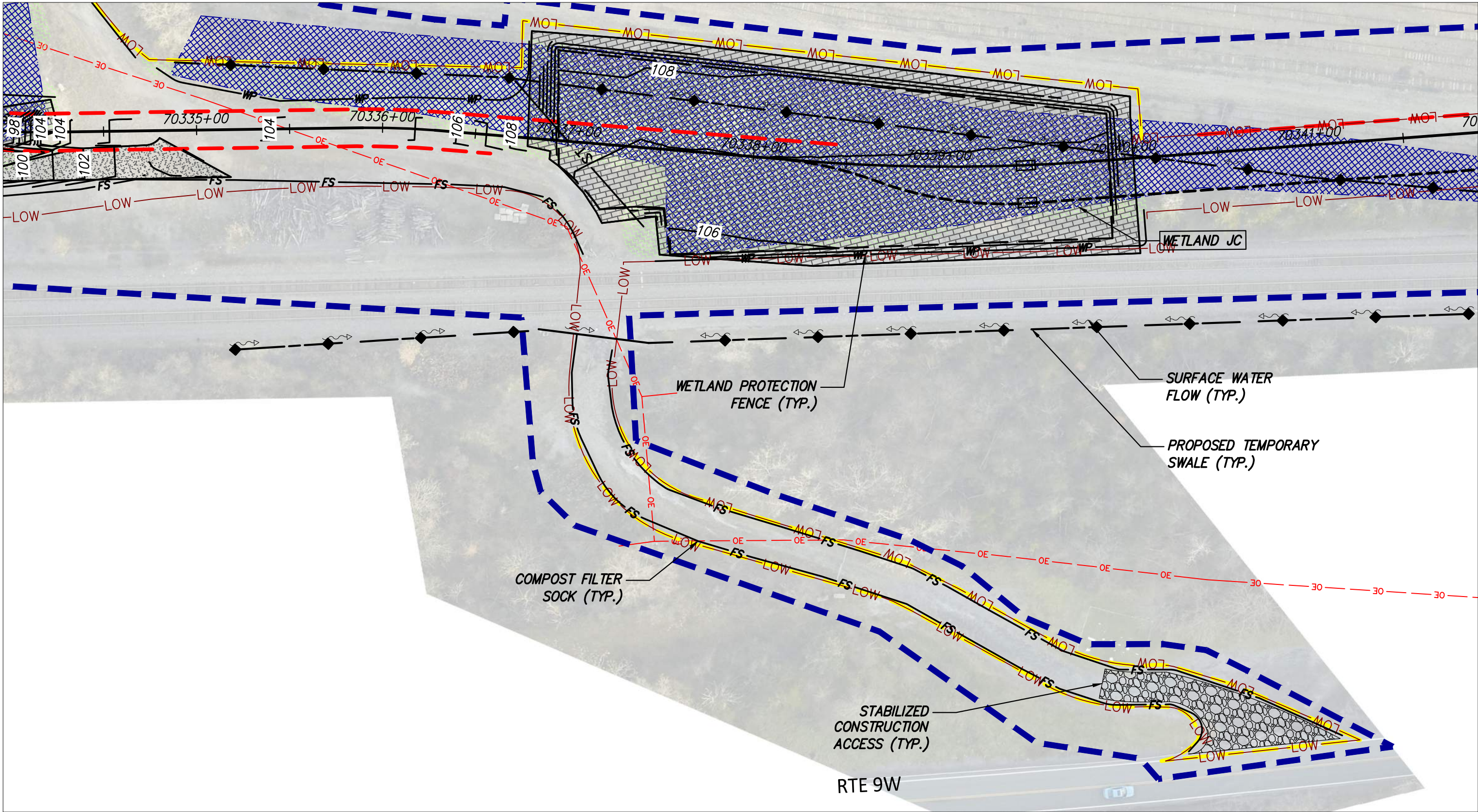
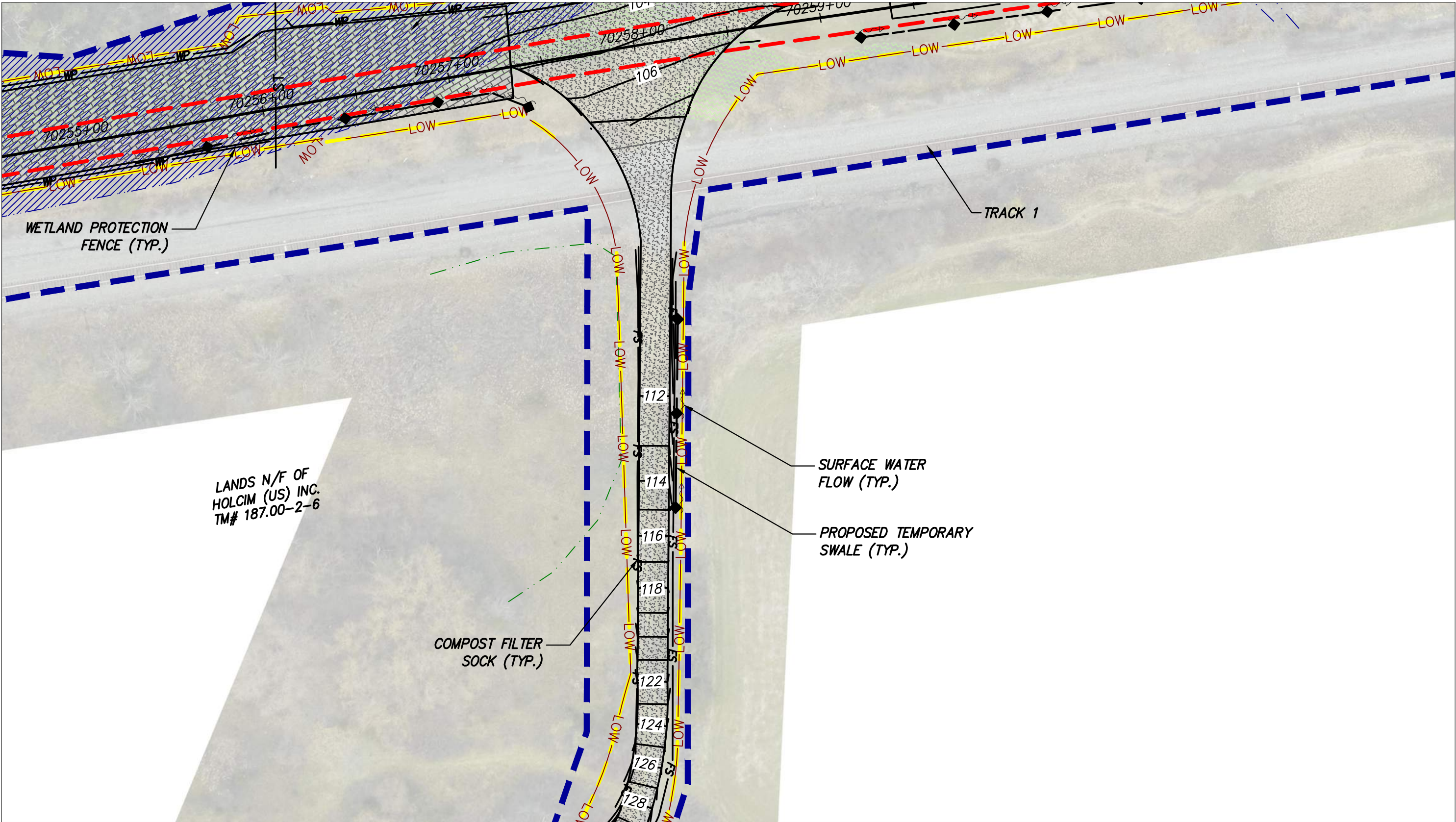
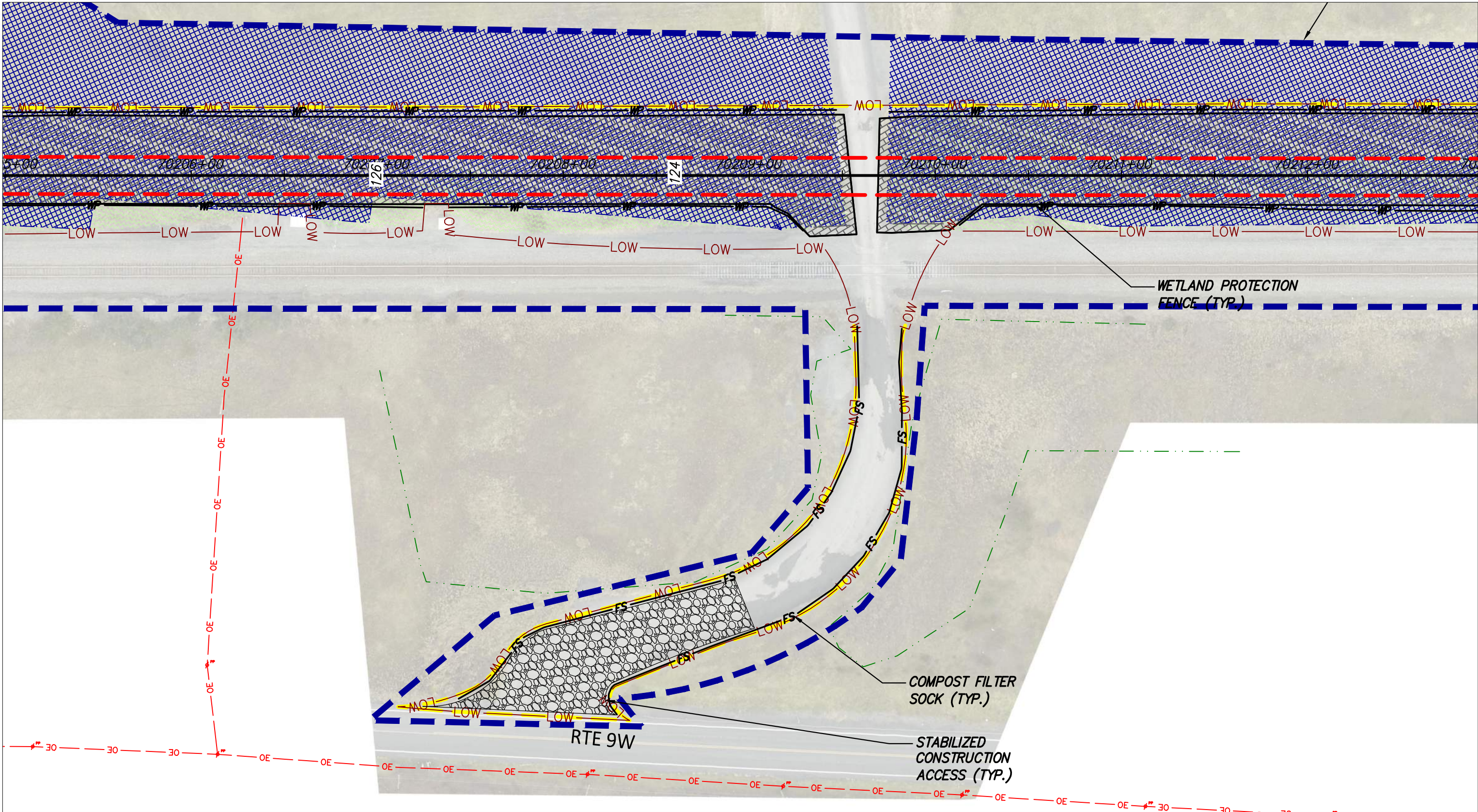
CHAMPLAIN HUDSON POWER EXPRESS  
SEGMENT 11 (PACKAGE 7A) - CSX: CATSKILL  
EROSION AND SEDIMENT CONTROL PLAN  
OFF SITE ACCESS ROADS (SHEET 1)

DRAWN BY:	BL	DESIGNED BY:	SL	APPROVED BY:	JL	SCALE	AS SHOWN	DATE	03/17/2023
						REV. NO.	F	SH.NO.	OF

C-429

KIEWIT PROJECT NO.	21162
KC PROJECT NO.	120174
DRAWING NO.	





IT IS A VIOLATION OF LAW FOR ANY PERSON, UNLESS THEY ARE ACTING UNDER THE DIRECTION OF A LICENSED PROFESSIONAL ENGINEER, ARCHITECT, LANDSCAPE ARCHITECT OR LAND SURVEYOR TO ALTER AN ITEM IN ANY WAY, IF AN ITEM BEARING THE STAMP OF A LICENSED PROFESSIONAL IS ALTERED. THE ALTERING ENGINEER, ARCHITECT, LANDSCAPE ARCHITECT OR LAND SURVEYOR SHALL STAMP THE DOCUMENT AND INCLUDE THE NOTATION "ALTERED BY" FOLLOWED BY THEIR SIGNATURE, THE DATE OF SUCH ALTERATION, AND A SPECIFIC DESCRIPTION OF THE ALTERATION.

ISSUED FOR PERMITTING

F	03/17/2023	FINAL SUBMISSION	BL	JL
E	01/24/2023	DRAFT FINAL SUBMISSION	RB	JL
D	11/16/2022	PRELIMINARY DRAFT FINAL SUBMISSION	RB	JL
	04/29/2022	60% DESIGN SUBMISSION	RB	JL
B	03/22/2022	PRELIMINARY DESIGN DEVELOPMENT	BV	TK
A	02/14/2022	PRELIMINARY PROGRESS	BV	TK
No.	DATE	SUBMITTAL / REVISION DESCRIPTION	DB	APP

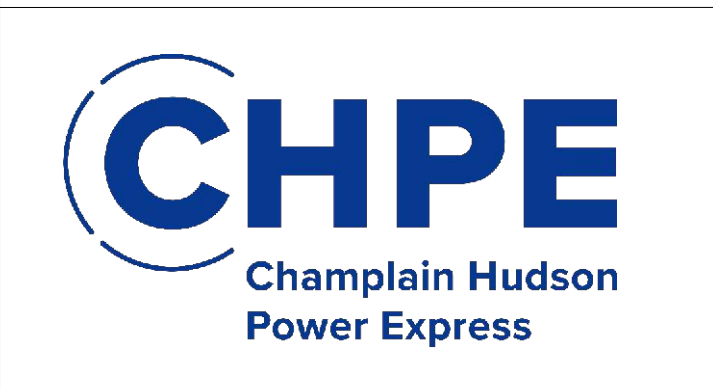
CHAMPLAIN HUDSON POWER EXPRESS  
SEGMENT 11 (PACKAGE 7A) - CSX: CATSKILL  
EROSION AND SEDIMENT CONTROL PLAN  
OFF SITE ACCESS ROADS (SHEET 2)

DRAWN BY:	BL	DESIGNED BY:	SL	APPROVED BY:	JL	SCALE	AS SHOWN	DATE	03/17/2023
						REV. NO.	F	SH. NO.	OF

KIEWIT PROJECT NO.	21162
KC PROJECT NO.	120174
DRAWING NO.	C-430
DATE	03/17/2023
SH. NO.	OF



File: T:\21075 CHPE EM&CP\CAD\WORKING DRAWINGS\_P7A\21162\_7A\_0-501 TO 0-506.DWG Saved: 3/14/2023 2:48:58 PM Plotted: 3/15/2023 11:18:20 AM Current User: Stephen Hoskins LastSavedBy: shoskins



IT IS A VIOLATION OF LAW FOR ANY PERSON, UNLESS THEY ARE ACTING UNDER THE DIRECTION OF A LICENSED PROFESSIONAL ENGINEER, ARCHITECT, LANDSCAPE ARCHITECT OR LAND SURVEYOR TO ALTER AN ITEM IN ANY WAY. IF AN ITEM BEARING THE STAMP OF A LICENSED PROFESSIONAL IS ALTERED, THE ALTERING ENGINEER, ARCHITECT, LANDSCAPE ARCHITECT OR LAND SURVEYOR SHALL STAMP THE DOCUMENT AND INCLUDE THE NOTATION "ALTERED BY" FOLLOWED BY THEIR SIGNATURE, THE DATE OF SUCH ALTERATION, AND A SPECIFIC DESCRIPTION OF THE ALTERATION.

ISSUED FOR PERMITTING

B	03/15/2023	DRAFT FINAL SUBMISSION	SH	TD	
A	12/02/2022	60% DRAFT SUBMISSION	SH	TD	
No.	DATE	SUBMITTAL / REVISION DESCRIPTION	DB	APP	

CHAMPLAIN HUDSON POWER EXPRESS SEGMENT 11 (PACKAGE 7A) - CSX: CATSKILL WORK ZONE TRAFFIC CONTROL NOTES, LEGEND, AND ABBREVIATIONS				KIEWIT PROJECT NO.	
				21162	
				EDR PROJECT NO.	
				21075	
				DRAWING NO.	
				C-501	
DRAWN BY:		DESIGNED BY: JLB	APPROVED BY: TD	SCALE AS SHOWN REV. NO.	DATE 3/15/2023 B SH.NO. OF

NOTES:

1.

ALL TRAFFIC CONTROL AND WORK AREA PROTECTION SYSTEMS AND DEVICES SHALL BE FABRICATED, INSTALLED, AND MAINTAINED IN ACCORDANCE WITH THE FEDERAL HIGHWAY ADMINISTRATION (FHWA) MANUAL ON UNIFORM TRAFFIC CONTROL DEVICES (MUTCD) FOR STREETS AND HIGHWAYS, LATEST EDITION, EXCEPT AS NOTED, AS WELL AS THE EM&CP FOR THIS PROJECT.
2.

ALL TEMPORARY TRAFFIC CONTROL AND WORK AREA PROTECTION DEVICES SHALL BE FURNISHED AND INSTALLED BY THE CONTRACTOR UNLESS OTHERWISE NOTED ON THE CONTRACT DRAWINGS AND APPROVED BY THE ENGINEER PRIOR TO COMMENCING WORK.
3.

ALL MAINTENANCE AND PROTECTIONS OF TRAFFIC WORK SHALL CONFORM TO THE CONTRACT DRAWINGS. MAINTENANCE AND PROTECTION OF TRAFFIC SCHEMES SHOWN ON THE CONTRACT DRAWINGS SHALL NOT BE CHANGED BY THE CONTRACTOR WITHOUT THE WRITTEN PERMISSION OF THE ENGINEER.
4.

THE TEMPORARY MAINTENANCE OF TRAFFIC AND WORK AREA PROTECTION DEVICE LOCATIONS SHOWN ON THE CONTRACT DRAWINGS ARE SCHEMATIC EXCEPT AS NOTED. LOCATION OF TRAFFIC CONTROL DEVICES MAY BE MODIFIED TO MEET FIELD CONDITIONS AS APPROVED BY THE ENGINEER.
5.

ALL CLOSURES SHALL BE COORDINATED WITH THE ENGINEER. A SCHEDULE OF WORK SHALL BE SUBMITTED AT LEAST TWO WEEKS IN ADVANCE FOR APPROVAL BY THE ENGINEER.
6.

THERE MAY BE ONGOING CONSTRUCTION CONTRACTS WITHIN THE VICINITY OF THE WORK AREA. DO NOT MOVE, MODIFY, OR RELOCATE ANY ITEM ASSOCIATED WITH THESE CONTRACTS WITHOUT PROPER APPROVAL OF AND COORDINATION WITH THE ENGINEER.
7.

PERFORM WORK IN SUCH A MANNER AND SEQUENCE AS TO INTERFERE AS LITTLE AS POSSIBLE WITH THE PASSAGE OF VEHICLES, PEDESTRIANS, AND OTHER KINDS OF PUBLIC TRAFFIC.
8.

ALL TEMPORARY MAINTENANCE OF TRAFFIC AND WORK AREA PROTECTION SIGN SUPPORTS AND MOUNTING WITHIN THE NYSDOT RIGHT-OF-WAY SHALL BE IN CONFORMANCE WITH NYSDOT STANDARD SHEETS AND STANDARD SPECIFICATIONS, AS WELL AS THE EM&CP FOR THIS PROJECT.
9.

ALL CONSTRUCTION SIGNS SHALL BE COVERED WITH THICK PLASTIC WHEN THE WORK THEY ARE INTENDED FOR IS NOT IN PROGRESS.
10.

ALL TRAFFIC CONTROL DEVICES SHALL BE INSTALLED PRIOR TO THE COMMENCEMENT OF THE WORK TO WHICH THEY APPLY, AND SHALL BE MAINTAINED BY THE CONTRACTOR THEREAFTER. THE DEVICES SHALL REMAIN IN PLACE AS LONG AS THEY ARE APPLICABLE.
11.

TRAFFIC CONTROL DEVICES SHALL NOT BE PLACED AT ANY LOCATIONS WHERE THEY MAY OBSCURE OR INTERFERE WITH THE MOTORIST VIEW OF APPROACHING, MERGING, OR INTERSECTING TRAFFIC; OBSTRUCT OTHER TEMPORARY OR PERMANENT TRAFFIC CONTROL DEVICES WHICH ARE STILL APPLICABLE TO ROADWAY CONDITIONS; MISLEAD OR MISDIRECT MOTORISTS, OR ARE BLOCKED BY OTHER TEMPORARY OR PERMANENT OBJECTS.
12.

ALL EXISTING ROADWAY ITEMS SUCH AS GUIDE RAILS, PAVEMENT MARKINGS, CURBS, SIGNALS AND SIGNS DAMAGED BY THE CONTRACTOR SHALL BE RESTORED BY THE CONTRACTOR TO THE SATISFACTION OF THE ENGINEER AT NO ADDITIONAL COST.
13.

TRAFFIC LANES AND OTHER AREAS CLOSED BY THE CONTRACTOR DURING PERMITTED WORK HOURS SHALL BE CLEARED OF ALL MATERIAL, EQUIPMENT, AND DEBRIS, AND SAFELY REOPENED TO TRAFFIC BY THE END OF THE WORK PERIOD UNLESS OTHERWISE INDICATED ON THE CONTRACT DRAWINGS.
14.

IF THE CONTRACTOR REQUIRES A LANE CLOSURE TO PERFORM OPERATIONS, THEY MAY DO SO WITH THE APPROVAL OF THE ENGINEER. ANY LANE CLOSURES WILL BE SHORT TERM AND IN ACCORDANCE WITH NYS STANDARD SHEETS UNLESS OTHERWISE SHOWN IN CONTRACT PLANS.
15.

NO WORK ACTIVITY OR STORAGE OF EQUIPMENT, VEHICLES, OR MATERIAL SHOULD OCCUR WITHIN A BUFFER SPACE.
16.

CHANNELIZING DEVICE SPACING (CENTER TO CENTER) SHALL NOT EXCEED 20' IN THE ACTIVE WORK SPACE.
17.

WHEN THE DISTANCE BETWEEN THE ADVANCE WARNING SIGNS AND WORK IS 2 MILES TO 5 MILES, A SUPPLEMENTAL DISTANCE PLAQUE (W7-3A) SHOULD BE USED WITH THE SHOULDER WORK SIGN (W21-5).
18.

IN ACCORDANCE WITH ARTICLE VII CERTIFICATE CONDITION 39, SIGNS SHALL BE PLACED AT THE FOLLOWING DISTANCES AT A MINIMUM: SIGNS ANNOUNCING CONSTRUCTION AT FIVE HUNDRED (500) FEET AND ONE THOUSAND (1,000) FEET; SIGNS DEPICTING WORKERS AT THREE HUNDRED (300) FEET; SIGNS DEPICTING ROAD WORK NEXT XX MILES (G20-1) MAY BE USED INSTEAD OF THE ROAD WORK AHEAD SIGN (W20-1) IF WORK LOCATIONS OCCUR OVER A DISTANCE OF MORE THAN TWO (2) MILES; SIGNS ANNOUNCING CONSTRUCTION AT FIVE HUNDRED (500) FEET.
19.

ALL ADDITIONAL TEMPORARY SIGNAGE, NOT COVERED IN FHWA MUTCD, SHALL COMPLY WITH NYS SUPPLEMENT TO MANUAL OF UNIFORM TRAFFIC CONTROL DEVICES.
20.

DURING NON-WORK HOURS, LEAVE DRUMS AND TCB IN PLACE, OR AS DIRECTED AT THE ENGINEER.
21.

DURING WINTER MORATORIUM, COVER EXCAVATION WITH TEMPORARY ASPHALT AND OPEN ALL LANES TO TRAFFIC.
22.

THE WZTC DETAILS CONTAINED IN THE CONTRACT PLANS SUPPLEMENT THE CURRENT NYSDOT STANDARD SHEETS. REFERENCE SHALL BE MADE TO THE APPLICABLE NYSDOT STANDARD SHEETS FOR ALL NOTES AND TABLES. THE LATEST REVISIONS OF THE STANDARD SHEETS MAINTAINED BY NYSDOT, WHICH ARE CURRENT ON THE DATE OF ADVERTISEMENT FOR BIDS, SHALL BE CONSIDERED TO BE IN EFFECT. ALL PAY ITEMS AND WORK CONTAINED IN THE CONTRACT ANY ANY ADDITIONAL PAY ITEMS AND WORK ENCOUNTERED DURING THE COURSE OF THE CONTRACT SHALL BE SUBJECT TO THE APPLICABLE STANDARD SHEET(S) UNLESS OTHERWISE SPECIFIED IN THE CONTRACT DOCUMENTS.
23.

MAINTAIN SAFE AND ADEQUATE ACCESS FOR INTERSECTING ROADWAYS, HOMES, AND BUSINESSES, AT ALL TIMES, TO THE SATISFACTION OF THE ENGINEER.
24.

ACCESS TO RESIDENTIAL AND COMMERCIAL DRIVEWAYS SHALL BE MAINTAINED AT ALL TIMES. UNLESS OTHER AGREEMENTS SUITABLE TO THE PROPERTY OWNERS CAN BE MADE, PROPERTY OWNERS WHOSE DRIVEWAYS WILL BE MADE INACCESSIBLE SHALL BE NOTIFIED BY THE CONTRACTOR AT LEAST 24 HOURS PRIOR TO RESTRICTING USE OF THE DRIVEWAY. THE CONTRACTOR SHALL MAINTAIN ACCESS TO COMMERCIAL DRIVEWAYS AT ALL TIMES WHEN A FACILITY IS IN USE. FOR MULTIPLE ACCESS PROPERTIES, ONLY ONE DRIVEWAY MAY BE CLOSED AT ANY ONE TIME. ACCESS SHALL BE RESTORED TO ALL DRIVEWAYS AS SOON AS POSSIBLE, OR AS DIRECTED BY THE ENGINEER.
25.

THE CONTRACTOR'S ATTENTION IS DIRECTED TO THE FACT THAT THE FOLLOWING HOLIDAY WORK RESTRICTIONS ARE APPLICABLE TO THIS PROJECT. DURING THESE HOLIDAY PERIODS, THE CONTRACTOR WILL NOT BE ALLOWED TO PERFORM ANY WORK THAT WILL BE DISRUPTIVE TO TRAFFIC, INCLUDING BUT NOT LIMITED TO LANE CLOSURES. LANE CLOSURES WILL NOT BE PERMITTED DURING THE FOLLOWING STATE RECOGNIZED HOLIDAYS:

- MEMORIAL DAY

–

MONDAY, MAY 29, 2023

•

INDEPENDENCE DAY

–

TUESDAY, JULY 4, 2023

•

LABOR DAY

–

MONDAY, SEPTEMBER 4, 2023

•

THANKSGIVING DAY

–

THURSDAY, NOVEMBER 23, 2023

•

CHRISTMAS DAY

–

MONDAY, DECEMBER 25, 2023

•

NEW YEAR'S DAY

–

SUNDAY, JANUARY 1, 2024

•

MEMORIAL DAY

–

MONDAY, MAY 27, 2024

•

INDEPENDENCE DAY

–

TUESDAY, JULY 4, 2024

•

LABOR DAY

–

MONDAY, SEPTEMBER 2, 2024

•

THANKSGIVING DAY

–

THURSDAY, NOVEMBER 28, 2024

•

CHRISTMAS DAY

–

MONDAY, DECEMBER 25, 2024

•

NEW YEAR'S DAY

–

SUNDAY, JANUARY 1, 2025

•

MEMORIAL DAY

–

MONDAY, MAY 26, 2025

•

INDEPENDENCE DAY

–

TUESDAY, JULY 4, 2025

•

LABOR DAY

–

MONDAY, SEPTEMBER 1, 2025

•

THANKSGIVING DAY

–

THURSDAY, NOVEMBER 27, 2025

•

CHRISTMAS DAY

–

MONDAY, DECEMBER 25, 2025
26. LANE CLOSURES SHALL BE SUSPENDED AS FOLLOWS:
- BEGINNING 6AM, FRIDAY MAY 26, 2023 AND ENDING 6AM, TUESDAY MAY 30, 2023

•

BEGINNING 6AM, SATURDAY JULY 1, 2023 AND ENDING 6AM, WEDNESDAY JULY 5, 2023

•

BEGINNING 6AM, FRIDAY SEPTEMBER 1, 2023 AND ENDING 6AM, TUESDAY SEPTEMBER 5, 2023

•

BEGINNING 6AM, WEDNESDAY NOVEMBER 22, 2023 AND ENDING 6AM, MONDAY NOVEMBER 27, 2023

•

BEGINNING 6AM, FRIDAY DECEMBER 22, 2023 AND ENDING 6AM, TUESDAY DECEMBER 26, 2023

•

BEGINNING 6AM, SUNDAY DECEMBER 30, 2023 AND ENDING 6AM, WEDNESDAY JANUARY 3, 2024

•

BEGINNING 6AM, FRIDAY MAY 24, 2024 AND ENDING 6AM, TUESDAY MAY 28, 2024

•

BEGINNING 6AM, MONDAY JULY 1, 2024 AND ENDING 6AM, FRIDAY JULY 5, 2024

•

BEGINNING 6AM, FRIDAY AUGUST 30, 2024 AND ENDING 6AM, TUESDAY SEPTEMBER 3, 2024

•

BEGINNING 6AM, WEDNESDAY NOVEMBER 27, 2024 AND ENDING 6AM, MONDAY DECEMBER 2, 2024

•

BEGINNING 6AM, FRIDAY DECEMBER 20, 2024 AND ENDING 6AM, THURSDAY DECEMBER 26, 2024

•

BEGINNING 6AM, TUESDAY DECEMBER 30, 2024 AND ENDING 6AM, FRIDAY JANUARY 3, 2025

•

BEGINNING 6AM, FRIDAY MAY 23, 2025 AND ENDING 6AM, TUESDAY MAY 27, 2025

•

BEGINNING 6AM, THURSDAY JULY 3, 2025 AND ENDING 6AM, MONDAY JULY 7, 2025

•

BEGINNING 6AM, FRIDAY AUGUST 29, 2025 AND ENDING 6AM, TUESDAY SEPTEMBER 2, 2025

•

BEGINNING 6AM, WEDNESDAY NOVEMBER 26, 2025 AND ENDING 6AM, MONDAY DECEMBER 1, 2025

•

BEGINNING 6AM, WEDNESDAY DECEMBER 24, 2025 AND ENDING 6AM, MONDAY DECEMBER 29, 2025
- 2
- 3
- 4
- FOR AGENCY  
REVIEW ONLY

3/15/2023

NOT FOR CONSTRUCTION
- LEGEND
- TEMPORARY SIGN

TEMPORARY TRAFFIC SIGNAL UNIT

WORK ZONE

DRUM

TCB (UNPINNED)

FLAGGER

FLAG TREE

WORK VEHICLE WITH TRUCK MOUNTED ATTENUATOR

FLASH UNIT (LEFT ARROW)

FLASH UNIT (CAUTION MODE)

TYPE III BARRICADE

TRAILER UNIT

WARNING LIGHT ON SIGN

TEMPORARY TRAFFIC FLOW ARROW
- ABBREVIATIONS
- |        |   |
|--------|---|
| AADT   | AVERAGE ANNUAL DAILY TRAFFIC                |
| CR     | COUNTY ROUTE                                |
| DHV    | DIRECTIONAL HOURLY VOLUME                   |
| FASU   | FLASHING ARROW SIGN UNIT                    |
| FHWA   | FEDERAL HIGHWAY ADMINISTRATION              |
| M.P.   | MILE POST                                   |
| MAX.   | MAXIMUM                                     |
| MIN.   | MINIMUM                                     |
| MPH    | MILES PER HOUR                              |
| MUTCD  | MANUAL ON UNIFORM TRAFFIC CONTROL DEVICES   |
| NYS    | NEW YORK STATE                              |
| NYSDOT | NEW YORK STATE DEPARTMENT OF TRANSPORTATION |
| RTE    | ROUTE                                       |
| TCB    | TEMPORARY CONCRETE BARRIER                  |
| STA.   | STATION                                     |
| WZTC   | WORK ZONE TRAFFIC CONTROL                   |



File: I:\21075 CHPE EMD\CP\CAD\WORKING DRAWINGS\_P7A\21162\_7A\_0-501 TO C-506.DWG Saved: 3/14/2023 2:48:58 PM Plotted: 3/15/2023 11:18:21 AM Current User: Stephen Hoskins LastSavedBy: shoskins

1

2

3

4

PACKAGE 7A WORK ZONE TRAFFIC CONTROL MAIN STAGES								
MAIN STAGE	STA. START	STA. END	ROUTE(S)	CLOSURE TYPE	PLAN SHEET	POSTED SPEED LIMIT	TRAFFIC COUNTS (AADT)	WORK NOTES
1	70029+00	70029+50	BROWNS CROSSING ROAD	LANE CLOSURE WITH ONE WAY TRAFFIC ADJACENT TO CSX RAILROAD	C-503	30 MPH	645 (2019)	TRENCHING AND CONDUIT INSTALLATION
2	70060+00	70060+00	NY STATE ROUTE 23	TEMPORARY ACCESS ROAD DETAIL	C-506	40 MPH	12953 (2017)	CONSTRUCTION ACCESS
3	70068+00	70068+75	ALLEN STREET	LANE CLOSURE AT OR NEAR INTERSECTION	C-504	30 MPH		TRENCHING AND CONDUIT INSTALLATION
4	70068+75	70071+75	ALLEN STREET	ROAD CLOSURE WITH DETOUR	C-507	30 MPH		TRENCHING AND CONDUIT INSTALLATION
5	70071+75	70072+25	US HIGHWAY 9W (NB)	NORTHBOUND LANE CLOSURE WITH LANE SHIFT	C-508	55 MPH (SB), 30 MPH (NB)	8937 (2019)	TRENCHING AND CONDUIT INSTALLATION
6	70072+25	70072+50	US HIGHWAY 9W (SB)	SOUTHBOUND LANE CLOSURE WITH LANE SHIFT	C-509	55 MPH (SB), 30 MPH (NB)	8937 (2019)	TRENCHING AND CONDUIT INSTALLATION
7	70072+50	70079+50	US HIGHWAY 9W (SB)/ NY STATE ROUTE 23 (EB) EXIT RAMP TO US HIGHWAY 9W (SB)	RAMP CLOSURE WITH DETOUR AND SB 9W LANE CLOSURE	C-510	35 MPH (RAMP), 55 MPH (9W SB)	8937 (2019), 1459 (2019)	TRENCHING AND CONDUIT INSTALLATION, SPLICE VAULT INSTALLATION
8	70079+50	70085+00	US HIGHWAY 9W (SB) TO MAIN STREET	9W SHOULDER CLOSURE	C-511	55 MPH	8937 (2019)	TRENCHING AND CONDUIT INSTALLATION
9	70085+00	70085+00	JEFFERSON HEIGHTS	TEMPORARY ACCESS ROAD DETAIL	C-506	30 MPH	5853 (2019)	CONSTRUCTION ACCESS
10	70099+50	70100+50	W MAIN STREET CROSSING	LANE CLOSURE AT OR NEAR INTERSECTION	C-504	30 MPH		TRENCHING AND CONDUIT INSTALLATION
11	70100+00	70100+00	W MAIN STREET	TEMPORARY ACCESS ROAD DETAIL	C-506	30 MPH		CONSTRUCTION ACCESS
12	70101+25	70102+00	WILLOW LANE	LANE CLOSURE WITH ONE WAY TRAFFIC	C-503	30 MPH		TRENCHING AND CONDUIT INSTALLATION
13	70109+50	70110+25	DEPOT STREET	LANE CLOSURE WITH ONE WAY TRAFFIC ADJACENT TO CSX RAILROAD	C-503	30 MPH		TRENCHING AND CONDUIT INSTALLATION
14	70110+00	70110+00	DEPOT STREET	TEMPORARY ACCESS ROAD DETAIL	C-506	30 MPH		CONSTRUCTION ACCESS
15	70138+00	70138+00	CAUTERSKILL AVE	TEMPORARY ACCESS ROAD DETAIL	C-506	30 MPH		CONSTRUCTION ACCESS
16	70144+00	70144+00	W BRIDGE STREET/US HIGHWAY 9W & PARK PLACE	TEMPORARY ACCESS ROAD DETAIL	C-506	30 MPH	11886 (2019)	CONSTRUCTION ACCESS
17	70209+00	70210+00	PRIVATE DRIVE	LANE CLOSURE WITH ONE WAY TRAFFIC ADJACENT TO CSX RAILROAD	C-503	30 MPH		TRENCHING AND CONDUIT INSTALLATION
18	70209+50	70209+50	US HIGHWAY 9W	TEMPORARY ACCESS ROAD DETAIL	C-506	55 MPH	2406 (2019)	CONSTRUCTION ACCESS
19	70258+00	70258+00	US HIGHWAY 9W	TEMPORARY ACCESS ROAD DETAIL	C-506	55 MPH	2406 (2019)	CONSTRUCTION ACCESS
20	70276+50	70277+00	EMBOUGHT ROAD	LANE CLOSURE WITH ONE WAY TRAFFIC ADJACENT TO CSX RAILROAD	C-503	30 MPH		TRENCHING AND CONDUIT INSTALLATION
21	70277+00	70277+00	EMBOUGHT ROAD	TEMPORARY ACCESS ROAD DETAIL	C-506	30 MPH		CONSTRUCTION ACCESS
22	70337+00	70337+00	US HIGHWAY 9W	TEMPORARY ACCESS ROAD DETAIL	C-506	55 MPH	2406 (2019)	CONSTRUCTION ACCESS
23	70349+00	70349+00	US HIGHWAY 9W	TEMPORARY ACCESS ROAD DETAIL	C-506	55 MPH	2406 (2019)	CONSTRUCTION ACCESS
24	70382+50	70382+50	US HIGHWAY 9W	TEMPORARY ACCESS ROAD DETAIL	C-506	55 MPH	2406 (2019)	CONSTRUCTION ACCESS
25	70399+00	70400+00	US HIGHWAY 9W	TEMPORARY ACCESS ROAD DETAIL	C-506	40 MPH	2406 (2019)	CONSTRUCTION ACCESS
26	70405+00	70405+00	US HIGHWAY 9W	TEMPORARY ACCESS ROAD DETAIL	C-506	40 MPH	2406 (2019)	CONSTRUCTION ACCESS
27	70409+00	70409+00	US HIGHWAY 9W	TEMPORARY ACCESS ROAD DETAIL	C-506	40 MPH	2406 (2019)	CONSTRUCTION ACCESS
28	70417+50	70438+00	ALPHA ROAD	LANE CLOSURE WITH ONE WAY TRAFFIC	C-503	30 MPH		TRENCHING AND CONDUIT INSTALLATION
29	70437+50	70439+50	ALPHA ROAD	LANE CLOSURE AT OR NEAR INTERSECTION	C-504	30 MPH		TRENCHING AND CONDUIT INSTALLATION
30	70440+50	70442+00	ALPHA ROAD	LANE CLOSURE AT OR NEAR INTERSECTION	C-504	30 MPH		TRENCHING AND CONDUIT INSTALLATION
31	70442+00	70448+00	ALPHA ROAD	LANE CLOSURE WITH ONE WAY TRAFFIC	C-503	30 MPH		TRENCHING AND CONDUIT INSTALLATION

FOR AGENCY  
REVIEW ONLY

3/15/2023

NOT FOR CONSTRUCTION

A



IT IS A VIOLATION OF LAW FOR ANY PERSON, UNLESS THEY ARE ACTING UNDER THE DIRECTION OF A LICENSED PROFESSIONAL ENGINEER, ARCHITECT, LANDSCAPE ARCHITECT OR LAND SURVEYOR TO ALTER AN ITEM IN ANY WAY. IF AN ITEM BEARING THE STAMP OF A LICENSED PROFESSIONAL IS ALTERED, THE ALTERING ENGINEER, ARCHITECT, LANDSCAPE ARCHITECT OR LAND SURVEYOR SHALL STAMP THE DOCUMENT AND INCLUDE THE NOTATION "ALTERED BY" FOLLOWED BY THEIR SIGNATURE, THE DATE OF SUCH ALTERATION, AND A SPECIFIC DESCRIPTION OF THE ALTERATION.

ISSUED FOR PERMITTING

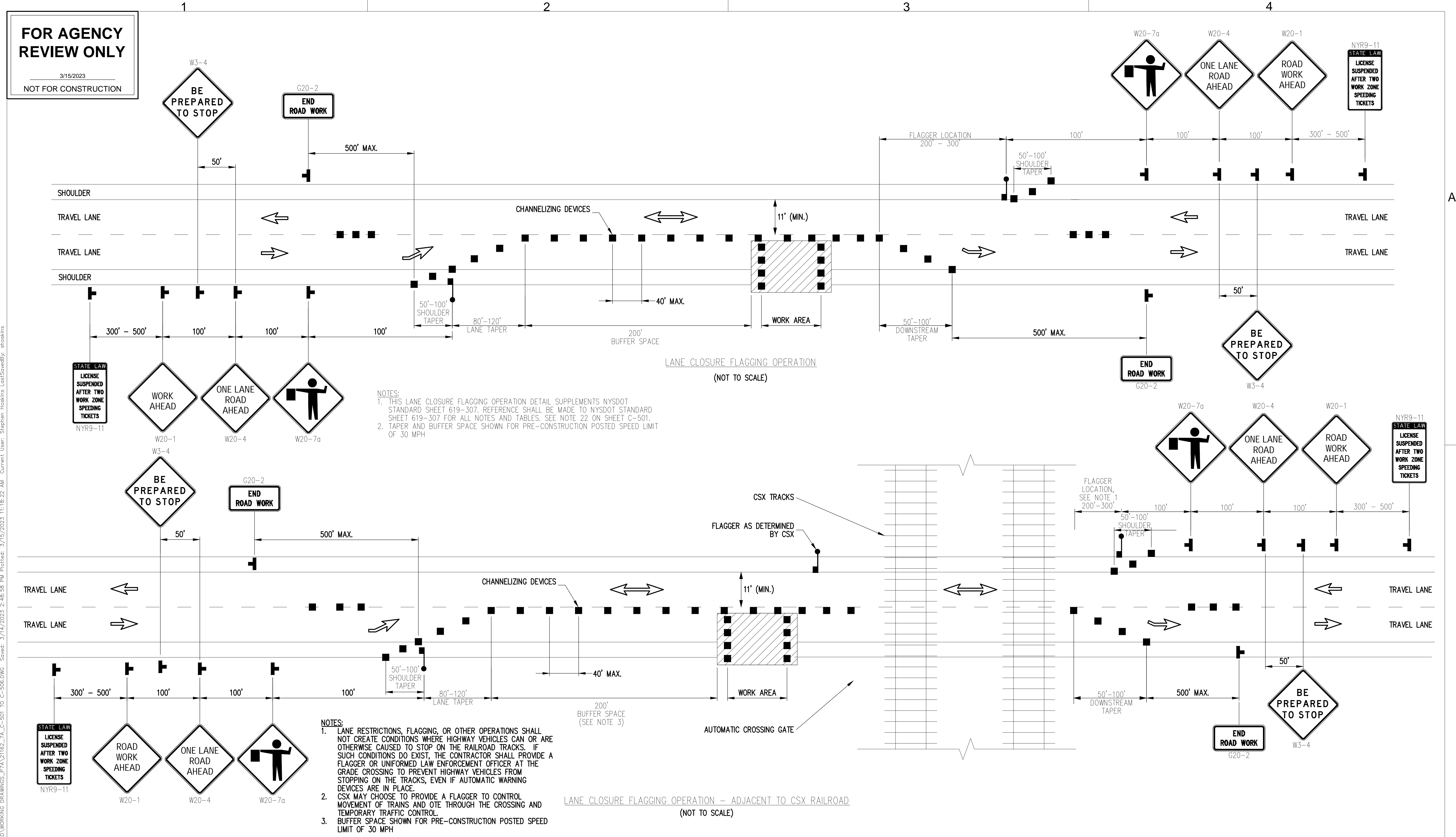
B	03/15/2023	DRAFT FINAL SUBMISSION	SH	TD	
A	12/02/2022	60% DRAFT SUBMISSION	SH	TD	
No.	DATE	SUBMITTAL / REVISION DESCRIPTION	DB	APP	

CHAMPLAIN HUDSON POWER EXPRESS  
SEGMENT 11 (PACKAGE 7A) - CSX: CATSKILL  
WORK ZONE TRAFFIC CONTROL  
MPT STAGES

KIEWIT PROJECT NO.		21162
EDR PROJECT NO.		21075
DRAWING NO.		C-502
DRAWN BY:	SH	DESIGNED BY: JLB
APPROVED BY:	TD	SCALE AS SHOWN
DATE	3/15/2023	SH.NO. OF



File: T:\21075 CHPE E&M\CD\WORKING DRAWINGS\_77A\21162\_77A\_0-501 TO C-506.DWG Saved: 3/14/2023 2:48:58 PM Plotted: 3/15/2023 11:18:22 AM Current User: Stephen Hoskins LastSavedBy: shoskins





File: T:\21075 CHPE EIM&CP\CAD\WORKING DRAWINGS\_77A\21162\_77A\_0-501 TO C-506.DWG Saved: 3/14/2023 2:48:58 PM Plotted: 3/15/2023 11:18:23 AM Current User: Stephen Hoskins LastSavedBy: shoskins

1

2

3

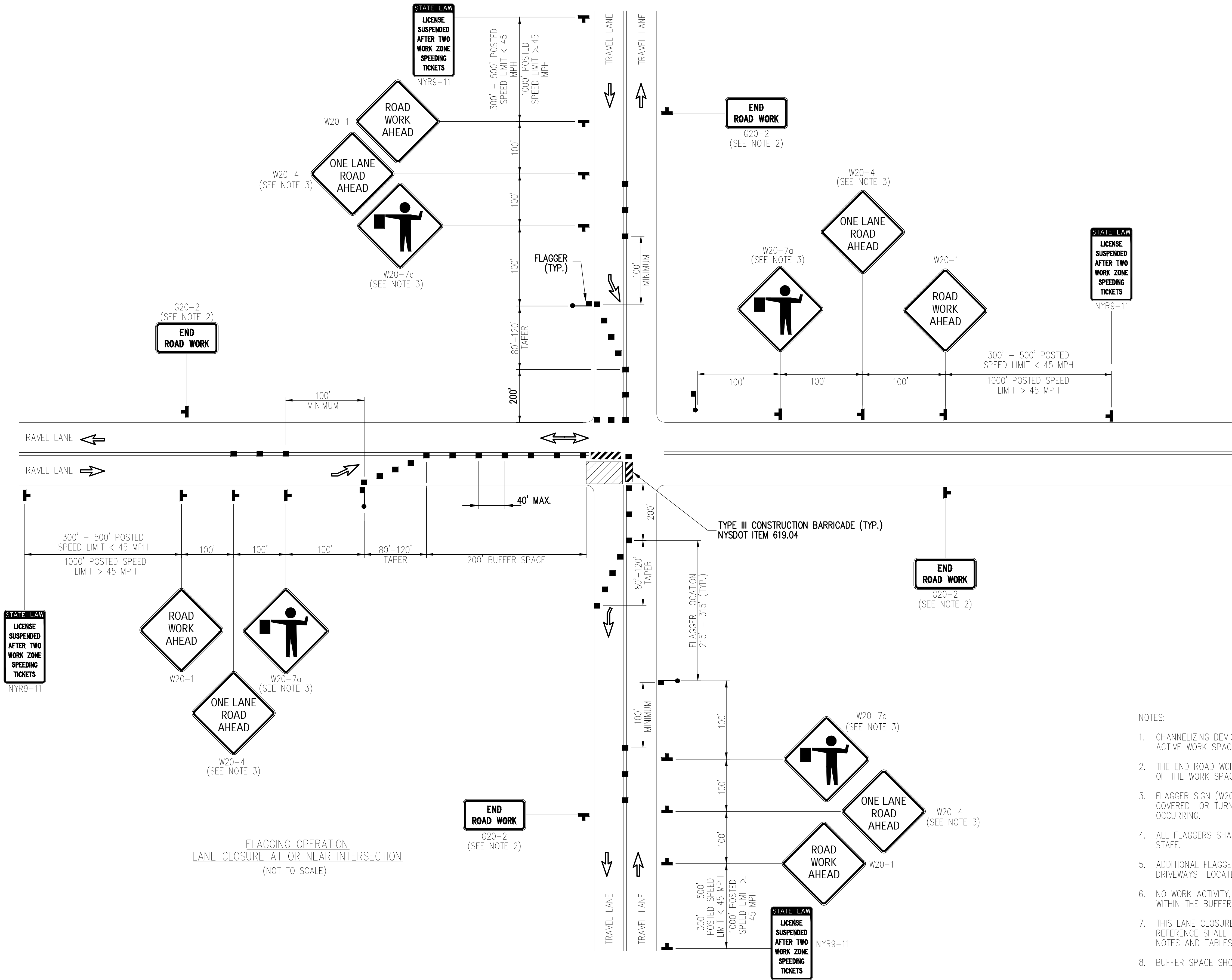
4

FOR AGENCY  
REVIEW ONLY

3/15/2023

NOT FOR CONSTRUCTION

A



NOTES:

1. CHANNELIZING DEVICE SPACING (CENTER TO CENTER) SHALL NOT EXCEED 20' IN THE ACTIVE WORK SPACE.
2. THE END ROAD WORK SIGN (G20-2) SHALL BE PLACED A MAXIMUM OF 500' PAST THE END OF THE WORK SPACE.
3. FLAGGER SIGN (W20-7a) AND ONE LANE ROAD AHEAD SIGN (W20-4) SHALL BE REMOVED, COVERED OR TURNED AWAY FROM ROAD USERS WHEN FLAGGING OPERATIONS ARE NOT OCCURRING.
4. ALL FLAGGERS SHALL USE 24" (MIN.) OCTAGON SHAPED STOP/SLOW PADDLES HAVING 6' STAFF.
5. ADDITIONAL FLAGGERS SHALL BE LOCATED AT ALL INTERSECTIONS AND COMMERCIAL DRIVEWAYS LOCATED WITHIN OR NEAR THE ACTIVE WORK AREA.
6. NO WORK ACTIVITY, EQUIPMENT, OR STORAGE OF VEHICLES, OR MATERIAL SHALL OCCUR WITHIN THE BUFFER SPACE AT ANY TIME.
7. THIS LANE CLOSURE DETAIL SUPPLEMENTS NYSDOT STANDARD SHEET 619-323. REFERENCE SHALL BE MADE TO NYSDOT STANDARD SHEET 619-323 FOR ALL NOTES AND TABLES. SEE NOTE 22 ON SHEET C-501.
8. BUFFER SPACE SHOWN FOR PRE-CONSTRUCTION POSTED SPEED LIMIT OF 30 MPH.



IT IS A VIOLATION OF LAW FOR ANY PERSON, UNLESS THEY ARE ACTING UNDER THE DIRECTION OF A LICENSED PROFESSIONAL ENGINEER, ARCHITECT, LANDSCAPE ARCHITECT OR LAND SURVEYOR TO ALTER AN ITEM IN ANY WAY. IF AN ITEM BEARING THE STAMP OF A LICENSED PROFESSIONAL IS ALTERED, THE ALTERING ENGINEER, ARCHITECT, LANDSCAPE ARCHITECT OR LAND SURVEYOR SHALL STAMP THE DOCUMENT AND INCLUDE THE NOTATION "ALTERED BY" FOLLOWED BY THEIR SIGNATURE, THE DATE OF SUCH ALTERATION, AND A SPECIFIC DESCRIPTION OF THE ALTERATION.

ISSUED FOR  
PERMITTING

B	03/15/2023	DRAFT FINAL SUBMISSION	SH	TD	
A	12/02/2022	60% DRAFT SUBMISSION	SH	TD	
No.	DATE	SUBMITTAL / REVISION DESCRIPTION	DB	APP	

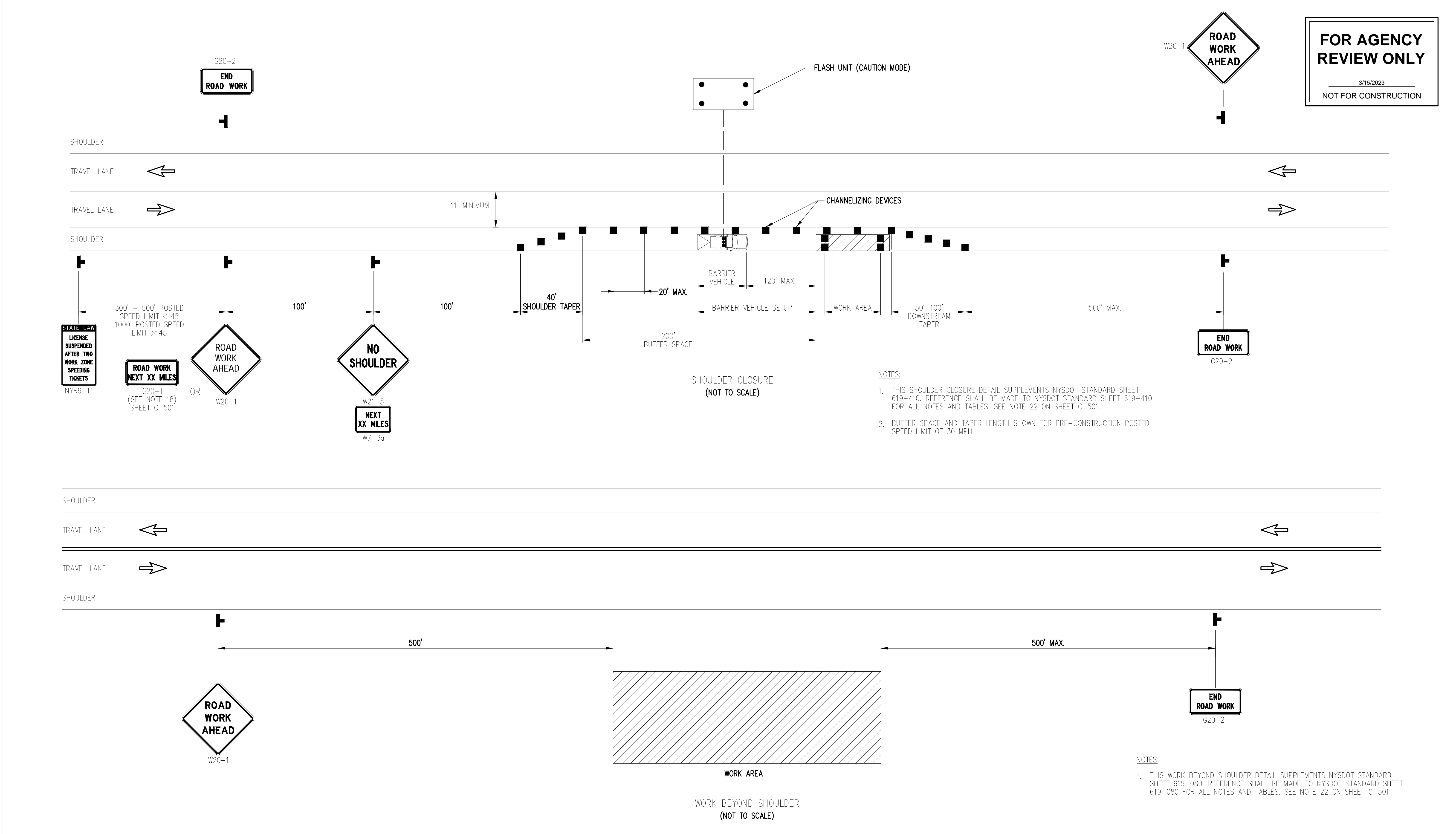
CHAMPLAIN HUDSON POWER EXPRESS  
SEGMENT 11 (PACKAGE 7A) - CSX: CATSKILL  
WORK ZONE TRAFFIC CONTROL

DRAWN BY:	DESIGNED BY: JLB	APPROVED BY: TD	SCALE REV. NO.	AS SHOWN	DATE B SH.NO.	3/15/2023 OF
-----------	------------------	-----------------	-------------------	----------	------------------	-----------------

KIEWIT PROJECT NO.	21162
EDR PROJECT NO.	21075
DRAWING NO.	C-504



File: I:\21075 CHPE EMD\CP\CAD\WORKING DRAWINGS\_P7A\21162\_7A\_0-501 TO C-506.DWG Saved: 3/14/2023 2:48:58 PM Plotted: 3/15/2023 11:18:23 AM Current User: Stephen Hoskins LastSavedBy: shoskins



IT IS A VIOLATION OF LAW FOR ANY PERSON, UNLESS THEY ARE ACTING UNDER THE DIRECTION OF A LICENSED PROFESSIONAL ENGINEER, ARCHITECT, LANDSCAPE ARCHITECT OR LAND SURVEYOR TO ALTER AN ITEM IN ANY WAY. IF AN ITEM BEARING THE STAMP OF A LICENSED PROFESSIONAL IS ALTERED, THE ALTERING ENGINEER, ARCHITECT, LANDSCAPE ARCHITECT OR LAND SURVEYOR SHALL STAMP THE DOCUMENT AND INCLUDE THE NOTATION "ALTERED BY" FOLLOWED BY THEIR SIGNATURE, THE DATE OF SUCH ALTERATION, AND A SPECIFIC DESCRIPTION OF THE ALTERATION.

ISSUED FOR PERMITTING

B	03/15/2023	DRAFT FINAL SUBMISSION	SH	TD	
A	12/02/2022	60% DRAFT SUBMISSION	SH	TD	
No.	DATE	SUBMITTAL / REVISION DESCRIPTION	DB	APP	

CHAMPLAIN HUDSON POWER EXPRESS  
SEGMENT 11 (PACKAGE 7A) - CSX: CATSKILL  
WORK ZONE TRAFFIC CONTROL

DRAWN BY:	DESIGNED BY: JLB	APPROVED BY: TD	SCALE REV. NO.	AS SHOWN	DATE B SH.NO.	3/15/2023 OF
-----------	------------------	-----------------	-------------------	----------	------------------	-----------------

KIEWIT PROJECT NO.	21162
EDR PROJECT NO.	21075
DRAWING NO.	C-505
DATE	3/15/2023
B SH.NO.	OF



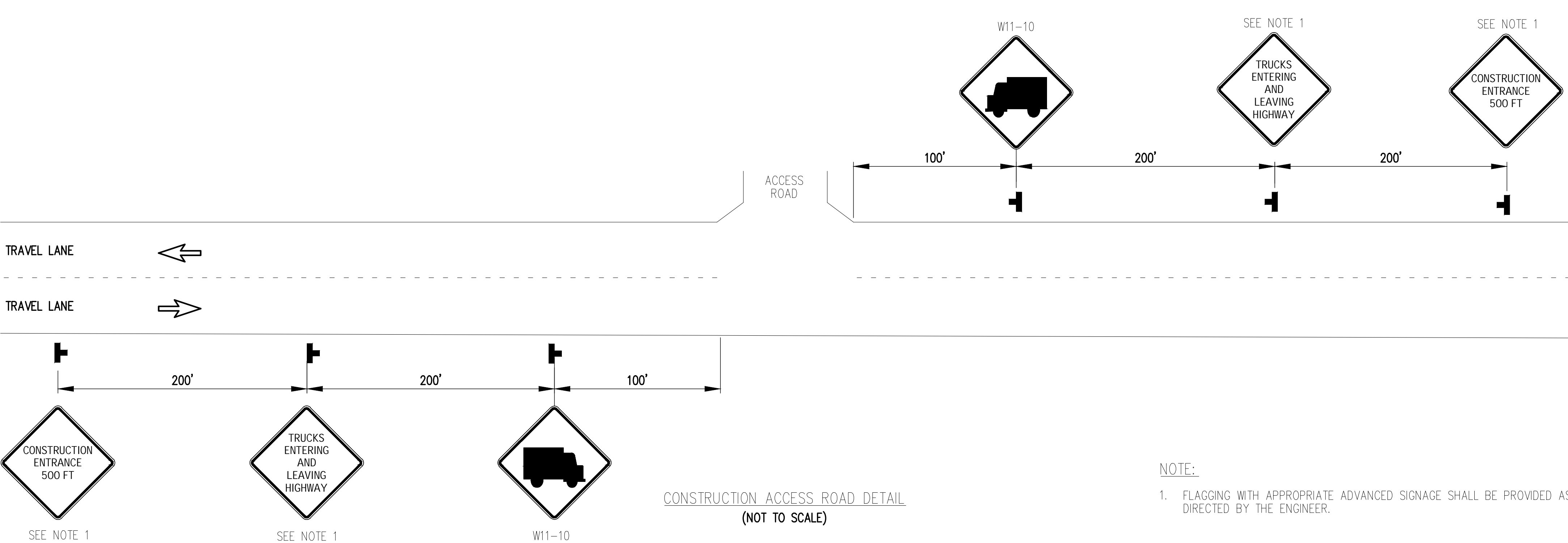
File: I:\21075 CHPE EM&CP\CAD\WORKING DRAWINGS\_P7A\21162\_7A\_0-501 TO C-506.DWG Saved: 3/14/2023 2:48:58 PM Plotted: 3/15/2023 11:18:24 AM Current User: Stephen Hoskins LastSavedBy: shoskins

1

2

3

4



**FOR AGENCY  
REVIEW ONLY**

3/15/2023

NOT FOR CONSTRUCTION

CONSTRUCTION ACCESS ROAD DETAIL  
(NOT TO SCALE)

- NOTE:
1. FLAGGING WITH APPROPRIATE ADVANCED SIGNAGE SHALL BE PROVIDED AS DIRECTED BY THE ENGINEER.



IT IS A VIOLATION OF LAW FOR ANY PERSON, UNLESS THEY ARE ACTING UNDER THE DIRECTION OF A LICENSED PROFESSIONAL ENGINEER, ARCHITECT, LANDSCAPE ARCHITECT OR LAND SURVEYOR TO ALTER AN ITEM IN ANY WAY. IF AN ITEM BEARING THE STAMP OF A LICENSED PROFESSIONAL IS ALTERED, THE ALTERING ENGINEER, ARCHITECT, LANDSCAPE ARCHITECT OR LAND SURVEYOR SHALL STAMP THE DOCUMENT AND INCLUDE THE NOTATION "ALTERED BY" FOLLOWED BY THEIR SIGNATURE, THE DATE OF SUCH ALTERATION, AND A SPECIFIC DESCRIPTION OF THE ALTERATION.

**ISSUED FOR  
PERMITTING**

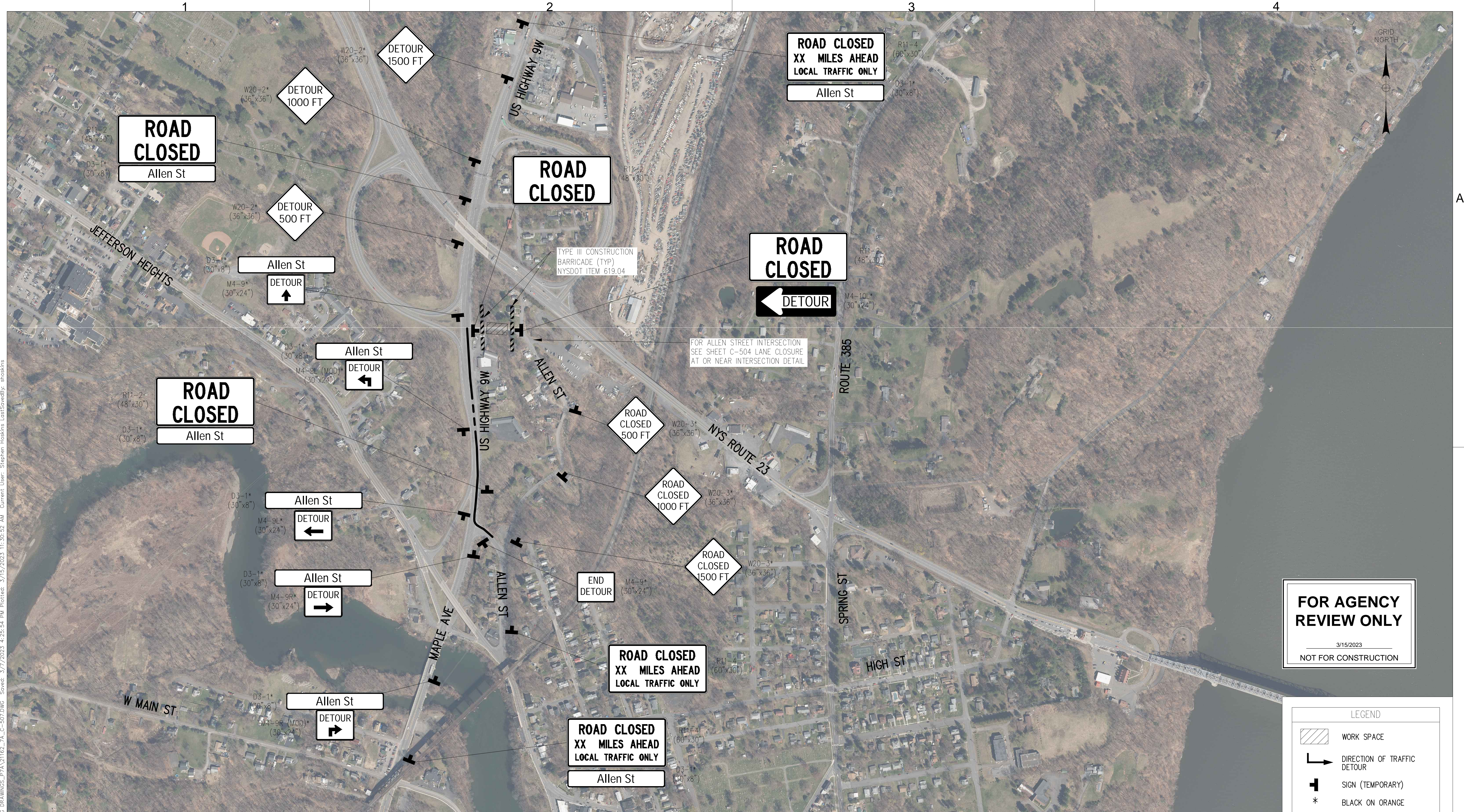
B	03/15/2023	DRAFT FINAL SUBMISSION	SH	TD	
A	12/02/2022	60% DRAFT SUBMISSION	SH	TD	
No.	DATE	SUBMITTAL / REVISION DESCRIPTION	DB	APP	

**CHAMPLAIN HUDSON POWER EXPRESS**  
SEGMENT 11 (PACKAGE 7A) - CSX: CATSKILL  
WORK ZONE TRAFFIC CONTROL

KIEWIT PROJECT NO.	21162
EDR PROJECT NO.	21075
DRAWING NO.	C-506
DATE	3/15/2023
SH.NO.	OF

DRAWN BY:	DESIGNED BY: JLB	APPROVED BY: TD	SCALE	AS SHOWN
			REV. NO.	





ALLEN STREET DETOUR PLAN  
NTS

FOR AGENCY  
REVIEW ONLY

3/15/2023

NOT FOR CONSTRUCTION

LEGEND

- WORK SPACE
- DIRECTION OF TRAFFIC DETOUR
- SIGN (TEMPORARY)
- BLACK ON ORANGE