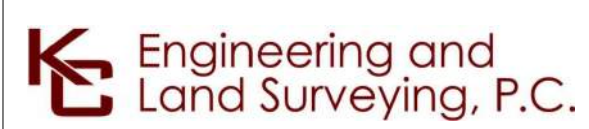
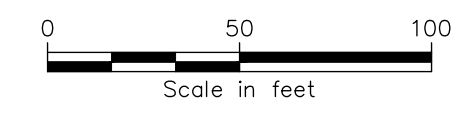


STA. 70135+00.00 TO STA. 70150+00.00 PLAN VIEW
SCALE: 1" = 50'



IT IS A VIOLATION OF LAW FOR ANY PERSON, UNLESS THEY ARE ACTING UNDER THE DIRECTION OF A LICENSED PROFESSIONAL ENGINEER, ARCHITECT, LANDSCAPE ARCHITECT OR LAND SURVEYOR TO ALTER AN ITEM IN ANY WAY, IF AN ITEM BEARING THE STAMP OF A LICENSED PROFESSIONAL IS ALTERED. THE ALTERING ENGINEER, ARCHITECT, LANDSCAPE ARCHITECT OR LAND SURVEYOR SHALL STAMP THE DOCUMENT AND INCLUDE THE NOTATION "ALTERED BY" FOLLOWED BY THEIR SIGNATURE, THE DATE OF SUCH ALTERATION, AND A SPECIFIC DESCRIPTION OF THE ALTERATION.

ISSUED FOR PERMITTING

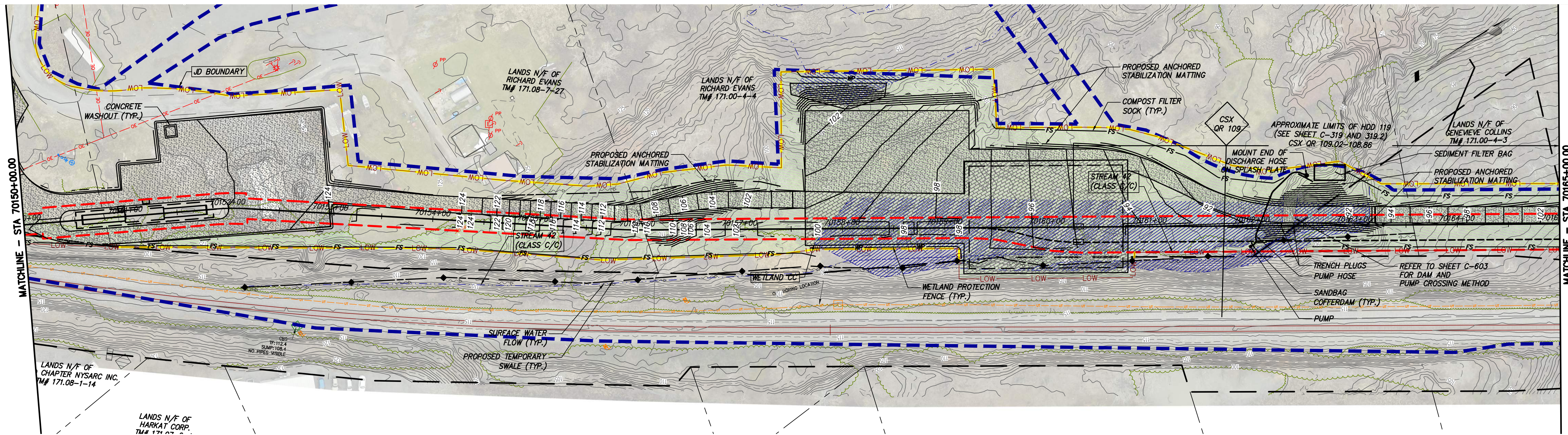
No.	DATE	SUBMITTAL / REVISION DESCRIPTION	DB	APP
F	03/17/2023	FINAL SUBMISSION	BL	JL
E	01/24/2023	DRAFT FINAL SUBMISSION	RB	JL
D	11/16/2022	PRELIMINARY DRAFT FINAL SUBMISSION	RB	JL
	04/29/2022	60% DESIGN SUBMISSION	RB	JL
B	03/22/2022	PRELIMINARY DESIGN DEVELOPMENT	BV	TK
A	02/14/2022	PRELIMINARY PROGRESS	BV	TK

CHAMPLAIN HUDSON POWER EXPRESS
SEGMENT 11 (PACKAGE 7A) - CSX: CATSKILL
EROSION AND SEDIMENT CONTROL PLAN
STA. 70135+00.00 TO STA. 70150+00.00

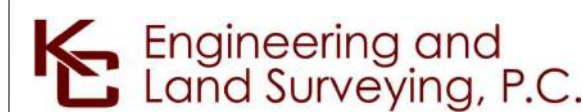
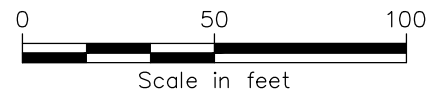
DRAWN BY: BL DESIGNED BY: SL APPROVED BY: JL SCALE AS SHOWN DATE 03/17/2023
REV. NO. F SH.NO. OF

KIEWIT PROJECT NO.	21162
KC PROJECT NO.	120174
DRAWING NO.	C-408

File: P:\210174-CHPE-CABLE-INSTALL-KIEWIT\60_CAD\20_ENGINEERING_CAD_FILES\PACKAGE_7A\NY_ENVIRONMENTAL_(BROSON_CONTROL)\01_KCE\SHEET_FILES\21162_7A_C_401-408.DWG. Saved: 3/17/2023 10:07:02 AM. Plotted: 3/17/2023 10:43:27 AM. Current User: Bobby Dohit. LastSavedBy: blom



STA. 70150+00.00 TO STA. 70165+00.00 PLAN VIEW
SCALE: 1" = 50'



IT IS A VIOLATION OF LAW FOR ANY PERSON, UNLESS THEY ARE ACTING UNDER THE DIRECTION OF A LICENSED PROFESSIONAL ENGINEER, ARCHITECT, LANDSCAPE ARCHITECT OR LAND SURVEYOR TO ALTER AN ITEM IN ANY WAY, IF AN ITEM BEARING THE STAMP OF A LICENSED PROFESSIONAL IS ALTERED. THE ALTERING ENGINEER, ARCHITECT, LANDSCAPE ARCHITECT OR LAND SURVEYOR SHALL STAMP THE DOCUMENT AND INCLUDE THE NOTATION "ALTERED BY" FOLLOWED BY THEIR SIGNATURE, THE DATE OF SUCH ALTERATION, AND A SPECIFIC DESCRIPTION OF THE ALTERATION.

ISSUED FOR PERMITTING

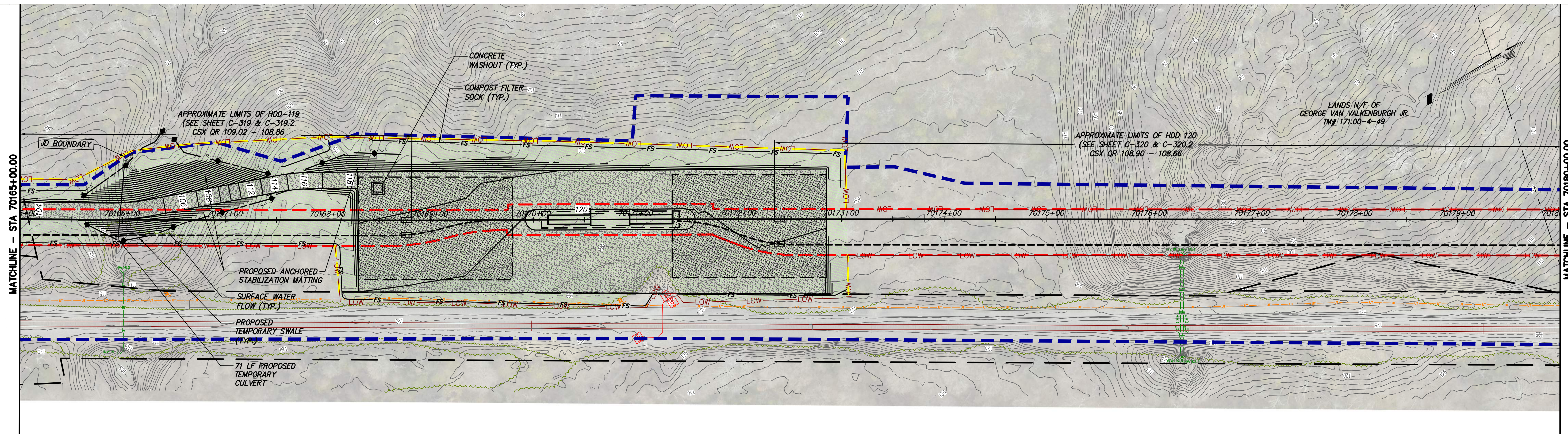
No.	DATE	SUBMITTAL / REVISION DESCRIPTION	DB	APP
F	03/17/2023	FINAL SUBMISSION	BL	JL
E	01/24/2023	DRAFT FINAL SUBMISSION	RB	JL
D	11/16/2022	PRELIMINARY DRAFT FINAL SUBMISSION	RB	JL
	04/29/2022	60% DESIGN SUBMISSION	RB	JL
B	03/22/2022	PRELIMINARY DESIGN DEVELOPMENT	BV	TK
A	02/14/2022	PRELIMINARY PROGRESS	BV	TK

CHAMPLAIN HUDSON POWER EXPRESS
SEGMENT 11 (PACKAGE 7A) - CSX: CATSKILL
EROSION AND SEDIMENT CONTROL PLAN
STA. 70150+00.00 TO STA. 70165+00.00

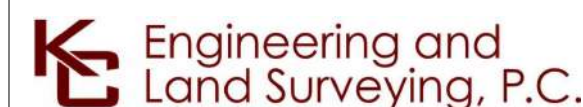
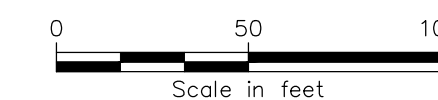
DRAWN BY: BL DESIGNED BY: SL APPROVED BY: JL SCALE AS SHOWN DATE 03/17/2023
REV. NO. F SH. NO. OF

KIEWIT PROJECT NO.	21162
KC PROJECT NO.	120174
DRAWING NO.	C-408.1

File: P:\2020\74-CHPE-INSTALL-KEWIT\60_CAD\20_ENGINEERING_CAD_FILES\PACKAGE_7A\NY_ENVIRONMENTAL_(BROSON_CONTROL)\01_KCE\SHEET_FILES\21162_7A_C_408-417.DWG. Saved: 3/17/2023 10:32:34 AM. Plotted: 3/17/2023 10:40:56 AM. Current User: Benson Lam. LastSavedBy: Blam



STA. 70165+00.00 TO STA. 70180+00.00 PLAN VIEW
SCALE: 1" = 50'



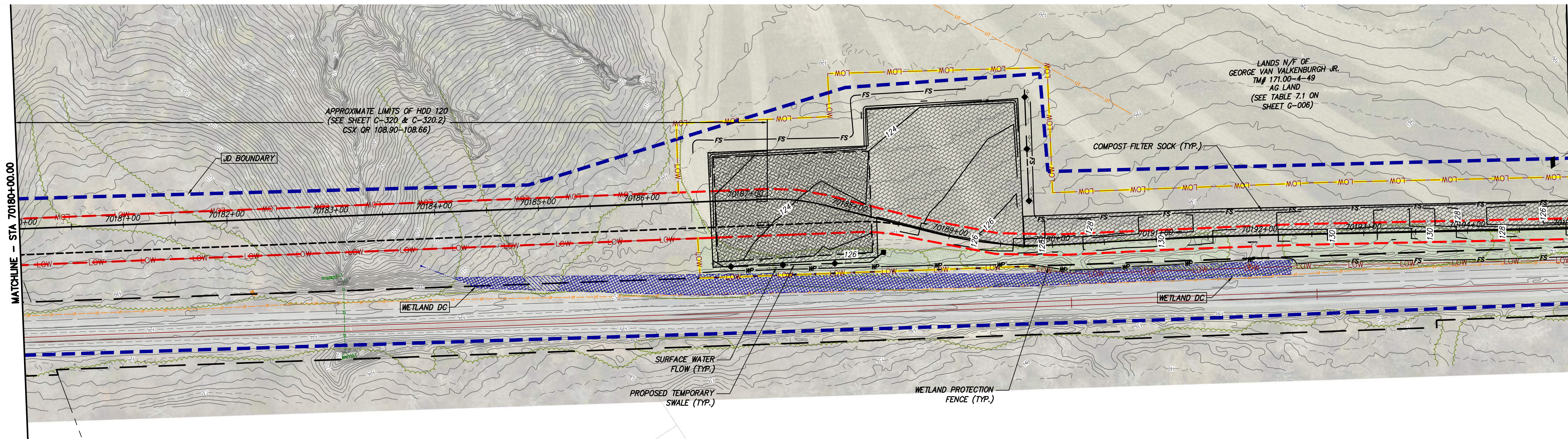
IT IS A VIOLATION OF LAW FOR ANY PERSON, UNLESS THEY ARE ACTING UNDER THE DIRECTION OF A LICENSED PROFESSIONAL ENGINEER, ARCHITECT, LANDSCAPE ARCHITECT OR LAND SURVEYOR TO ALTER AN ITEM IN ANY WAY, IF AN ITEM BEARING THE STAMP OF A LICENSED PROFESSIONAL IS ALTERED. THE ALTERING ENGINEER, ARCHITECT, LANDSCAPE ARCHITECT OR LAND SURVEYOR SHALL STAMP THE DOCUMENT AND INCLUDE THE NOTATION "ALTERED BY" FOLLOWED BY THEIR SIGNATURE, THE DATE OF SUCH ALTERATION, AND A SPECIFIC DESCRIPTION OF THE ALTERATION.

ISSUED FOR PERMITTING

F	03/17/2023	FINAL SUBMISSION	BL	JL
E	01/24/2023	DRAFT FINAL SUBMISSION	RB	JL
D	11/16/2022	PRELIMINARY DRAFT FINAL SUBMISSION	RB	JL
	04/29/2022	60% DESIGN SUBMISSION	RB	JL
B	03/22/2022	PRELIMINARY DESIGN DEVELOPMENT	BV	TK
A	02/14/2022	PRELIMINARY PROGRESS	BV	TK
No.	DATE	SUBMITTAL / REVISION DESCRIPTION	DB	APP

CHAMPLAIN HUDSON POWER EXPRESS
SEGMENT 11 (PACKAGE 7A) - CSX: CATSKILL
EROSION AND SEDIMENT CONTROL PLAN
STA. 70165+00.00 TO STA. 70180+00.00

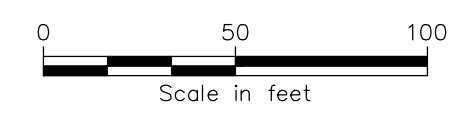
KIEWIT PROJECT NO.	21162
KC PROJECT NO.	120174
DRAWING NO.	C-409
DRAWN BY:	BL
DESIGNED BY:	SL
APPROVED BY:	JL
SCALE	AS SHOWN
REV. NO.	DATE
	03/17/2023
F	SH.NO.
	XX OF



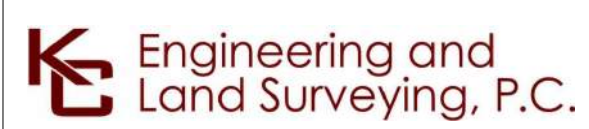
APPROXIMATE LIMITS OF HDD 120
(SEE SHEET C-320 & C-320.2)
CSX QR 108.90-108.66

LANDS N/F OF
GEORGE VAN WALKENBURGH JR.
TWP 171.00-4-49
AG LAND
(SEE TABLE 7.1 ON
SHEET G-006)

STA. 70180+00.00 TO STA. 70195+00.00 PLAN VIEW
SCALE: 1" = 50'



File: P:\2020\74-CHPE\CABLE_INSTALL\KIEWIT\60_CAD\20_ENGINEERING_CAD_FILES\PACKAGE_7A\NY_ENVIRONMENTAL_(BROSON_CONTROL)\01_KCE\SHEET_FILES\21162_7A_C_408-417.DWG. Saved: 3/17/2023 10:52:34 AM. Plotted: 3/17/2023 10:50:52 AM. Current User: Benson Lam. LastSavedBy: blam



IT IS A VIOLATION OF LAW FOR ANY PERSON, UNLESS THEY ARE ACTING UNDER THE DIRECTION OF A LICENSED PROFESSIONAL ENGINEER, ARCHITECT, LANDSCAPE ARCHITECT OR LAND SURVEYOR TO ALTER AN ITEM IN ANY WAY, IF AN ITEM BEARING THE STAMP OF A LICENSED PROFESSIONAL IS ALTERED. THE ALTERING ENGINEER, ARCHITECT, LANDSCAPE ARCHITECT OR LAND SURVEYOR SHALL STAMP THE DOCUMENT AND INCLUDE THE NOTATION "ALTERED BY" FOLLOWED BY THEIR SIGNATURE, THE DATE OF SUCH ALTERATION, AND A SPECIFIC DESCRIPTION OF THE ALTERATION.

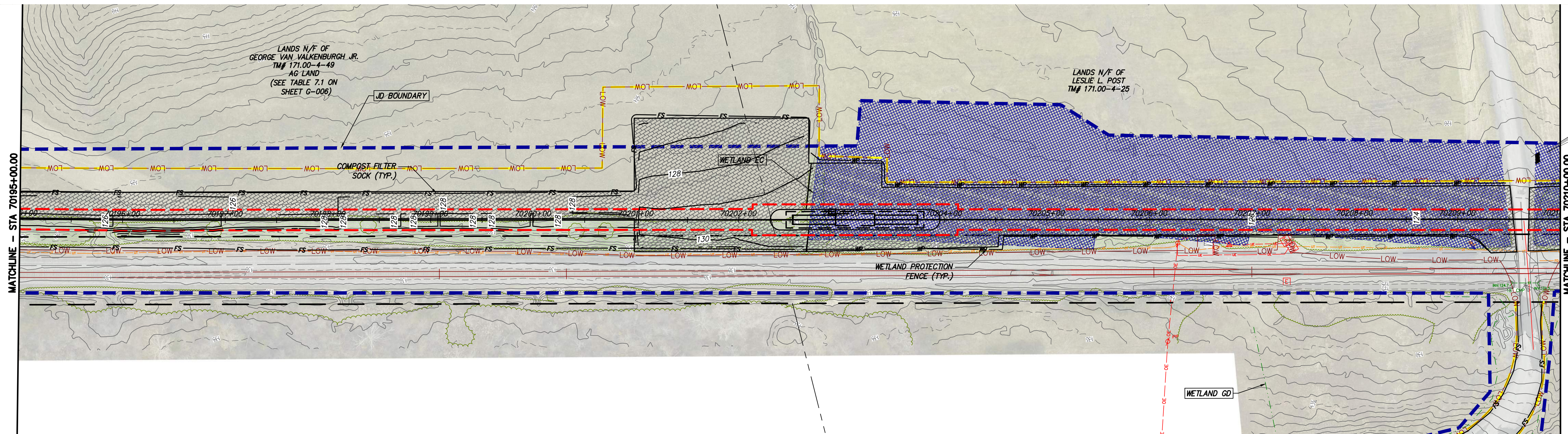
ISSUED FOR PERMITTING

No.	DATE	SUBMITTAL / REVISION DESCRIPTION	DB	APP
F	03/17/2023	FINAL SUBMISSION	BL	JL
E	01/24/2023	DRAFT FINAL SUBMISSION	RB	JL
D	11/16/2022	PRELIMINARY DRAFT FINAL SUBMISSION	RB	JL
	04/29/2022	60% DESIGN SUBMISSION	RB	JL
B	03/22/2022	PRELIMINARY DESIGN DEVELOPMENT	BV	TK
A	02/14/2022	PRELIMINARY PROGRESS	BV	TK

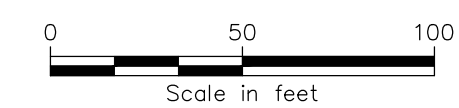
CHAMPLAIN HUDSON POWER EXPRESS
SEGMENT 11 (PACKAGE 7A) - CSX: CATSKILL
EROSION AND SEDIMENT CONTROL PLAN
STA. 70180+00.00 TO STA. 70195+00.00

KIEWIT PROJECT NO.	21162
KC PROJECT NO.	120174
DRAWING NO.	C-410
DATE	03/17/2023
SH.NO.	XX OF

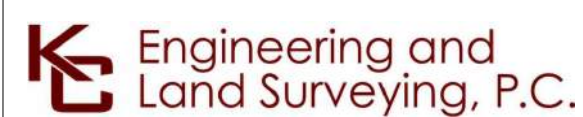
DRAWN BY: BL DESIGNED BY: SL APPROVED BY: JL SCALE AS SHOWN DATE 03/17/2023
REV. NO. F SH.NO. XX OF



STA. 70195+00.00 TO STA. 70210+00.00 PLAN VIEW
SCALE: 1" = 50'



File: P:\2021\74-CHPE-CABLE-INSTALL-KEWIT\60_CAD\20_ENGINEERING_CAD_FILES\PACKAGE_7A\NY_ENVIRONMENTAL_(BROSON_CONTROL)\01_KCE\SHEET_FILES\21162_7A_C_408-417.DWG. Saved: 3/17/2023 10:52:34 AM. Plotted: 3/17/2023 10:55:23 AM. Current User: Benson Lam. Last Saved By: Blam



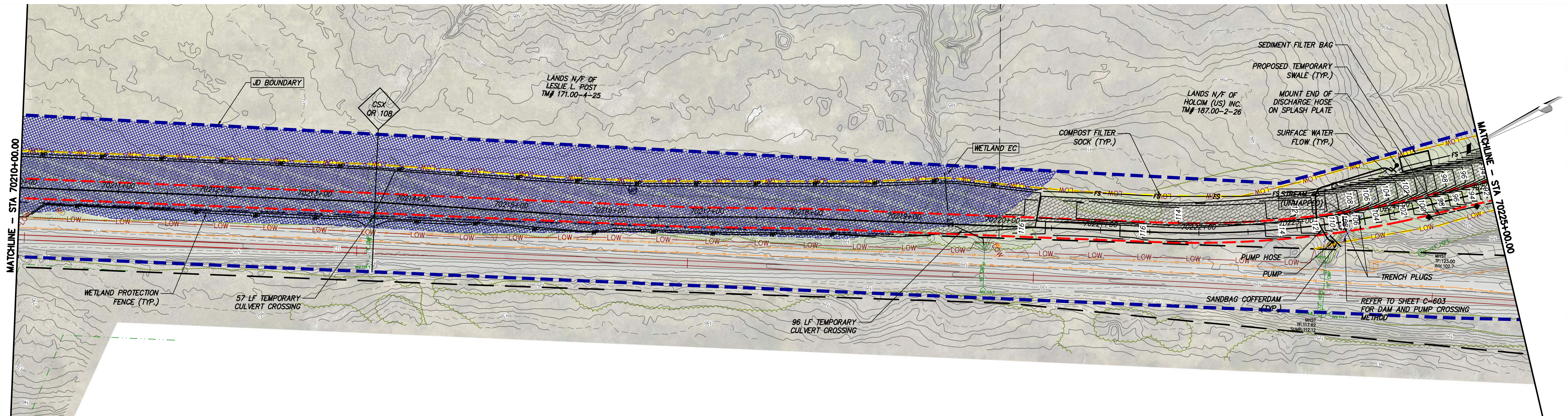
IT IS A VIOLATION OF LAW FOR ANY PERSON, UNLESS THEY ARE ACTING UNDER THE DIRECTION OF A LICENSED PROFESSIONAL ENGINEER, ARCHITECT, LANDSCAPE ARCHITECT OR LAND SURVEYOR TO ALTER AN ITEM IN ANY WAY, IF AN ITEM BEARING THE STAMP OF A LICENSED PROFESSIONAL IS ALTERED. THE ALTERING ENGINEER, ARCHITECT, LANDSCAPE ARCHITECT OR LAND SURVEYOR SHALL STAMP THE DOCUMENT AND INCLUDE THE NOTATION "ALTERED BY" FOLLOWED BY THEIR SIGNATURE, THE DATE OF SUCH ALTERATION, AND A SPECIFIC DESCRIPTION OF THE ALTERATION.

ISSUED FOR PERMITTING

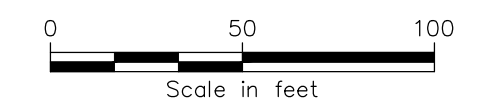
No.	DATE	SUBMITTAL / REVISION DESCRIPTION	DB	APP
F	03/17/2023	FINAL SUBMISSION	BL	JL
E	01/24/2023	DRAFT FINAL SUBMISSION	RB	JL
D	11/16/2022	PRELIMINARY DRAFT FINAL SUBMISSION	RB	JL
	04/29/2022	60% DESIGN SUBMISSION	RB	JL
B	03/22/2022	PRELIMINARY DESIGN DEVELOPMENT	BV	TK
A	02/14/2022	PRELIMINARY PROGRESS	BV	TK

CHAMPLAIN HUDSON POWER EXPRESS
SEGMENT 11 (PACKAGE 7A) - CSX: CATSKILL
EROSION AND SEDIMENT CONTROL PLAN
STA. 70195+00.00 TO STA. 70210+00.00

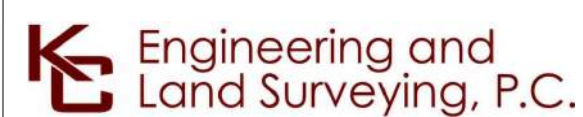
KIEWIT PROJECT NO.	21162
KC PROJECT NO.	120174
DRAWING NO.	C-411
DRAWN BY:	BL
DESIGNED BY:	SL
APPROVED BY:	JL
SCALE	AS SHOWN
REV. NO.	F
DATE	03/17/2023
SH. NO.	XX OF



STA. 70210+00.00 TO STA. 70225+00.00 PLAN VIEW
 SCALE: 1" = 50'



File: P:\120174-CHPE-INSTALL-KEWIT\60_CAD\20_ENGINEERING_CAD_FILES\PACKAGE_7A\NY_ENVIRONMENTAL_(BROSON_CONTROL)\01_KCE\SHEET_FILES\PACKAGE_7A_C_408-417.DWG. Saved: 3/17/2023 10:32:34 AM. Plotted: 3/17/2023 11:00:11 AM. User: Benson.Lom.LastSavedBy: blom



IT IS A VIOLATION OF LAW FOR ANY PERSON, UNLESS THEY ARE ACTING UNDER THE DIRECTION OF A LICENSED PROFESSIONAL ENGINEER, ARCHITECT, LANDSCAPE ARCHITECT OR LAND SURVEYOR TO ALTER AN ITEM IN ANY WAY, IF AN ITEM BEARING THE STAMP OF A LICENSED PROFESSIONAL IS ALTERED. THE ALTERING ENGINEER, ARCHITECT, LANDSCAPE ARCHITECT OR LAND SURVEYOR SHALL STAMP THE DOCUMENT AND INCLUDE THE NOTATION "ALTERED BY" FOLLOWED BY THEIR SIGNATURE, THE DATE OF SUCH ALTERATION, AND A SPECIFIC DESCRIPTION OF THE ALTERATION.

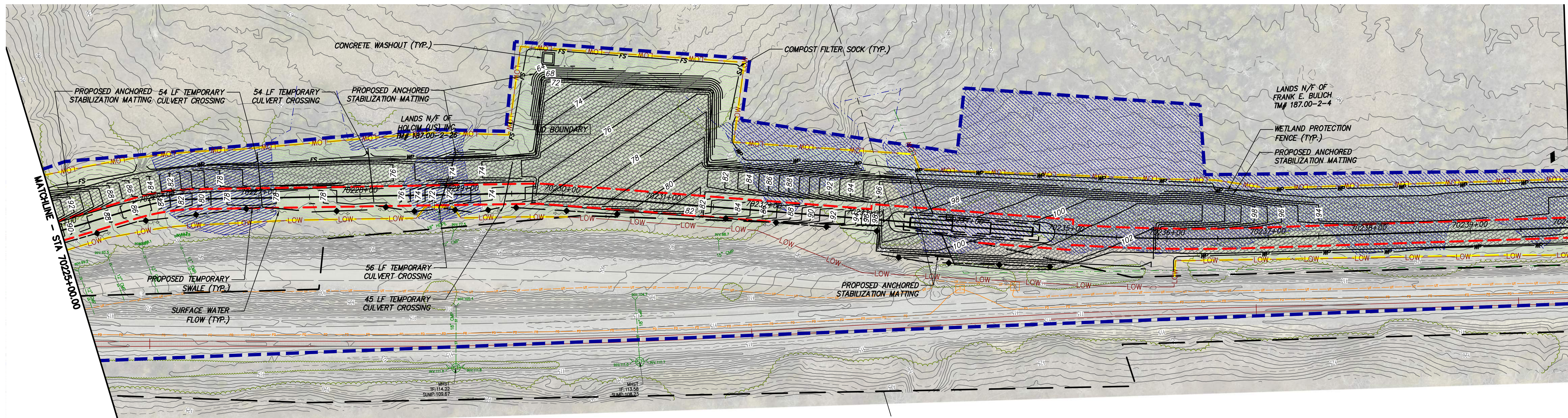
ISSUED FOR PERMITTING

No.	DATE	SUBMITTAL / REVISION DESCRIPTION	DB	APP
F	03/17/2023	FINAL SUBMISSION	BL	JL
E	01/24/2023	DRAFT FINAL SUBMISSION	RB	JL
D	11/16/2022	PRELIMINARY DRAFT FINAL SUBMISSION	RB	JL
	04/29/2022	60% DESIGN SUBMISSION	RB	JL
B	03/22/2022	PRELIMINARY DESIGN DEVELOPMENT	BV	TK
A	02/14/2022	PRELIMINARY PROGRESS	BV	TK

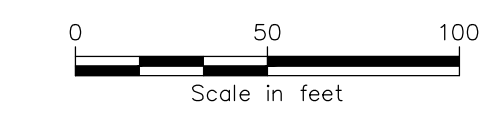
CHAMPLAIN HUDSON POWER EXPRESS
 SEGMENT 11 (PACKAGE 7A) - CSX: CATSKILL
 EROSION AND SEDIMENT CONTROL PLAN
 STA. 70210+00.00 TO STA. 70225+00.00

KIEWIT PROJECT NO.	21162
KC PROJECT NO.	120174
DRAWING NO.	C-412
DATE	03/17/2023
SH.NO.	XX OF

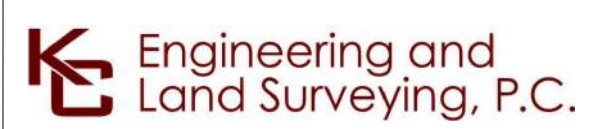
DRAWN BY: BL DESIGNED BY: SL APPROVED BY: JL SCALE AS SHOWN DATE 03/17/2023
 REV. NO. F SH.NO. XX OF



STA. 70225+00.00 TO STA. 70240+00.00 PLAN VIEW
SCALE: 1" = 50'



File: P:\120174-CHPE-CABLE-INSTALL-KEWIT\60_CAD\20_ENGINEERING_CAD_FILES\PACKAGE_7A\NY_ENVIRONMENTAL_(BROSON_CONTROL)\01_KCE\SHEET_FILES\21162_7A_C_408-417.DWG. Saved: 3/17/2023 10:32:34 AM. Plotted: 3/17/2023 11:05:03 AM. Current User: Benson Lam LastSavedBy: blam



IT IS A VIOLATION OF LAW FOR ANY PERSON, UNLESS THEY ARE ACTING UNDER THE DIRECTION OF A LICENSED PROFESSIONAL ENGINEER, ARCHITECT, LANDSCAPE ARCHITECT OR LAND SURVEYOR TO ALTER AN ITEM IN ANY WAY, IF AN ITEM BEARING THE STAMP OF A LICENSED PROFESSIONAL IS ALTERED. THE ALTERING ENGINEER, ARCHITECT, LANDSCAPE ARCHITECT OR LAND SURVEYOR SHALL STAMP THE DOCUMENT AND INCLUDE THE NOTATION "ALTERED BY" FOLLOWED BY THEIR SIGNATURE, THE DATE OF SUCH ALTERATION, AND A SPECIFIC DESCRIPTION OF THE ALTERATION.

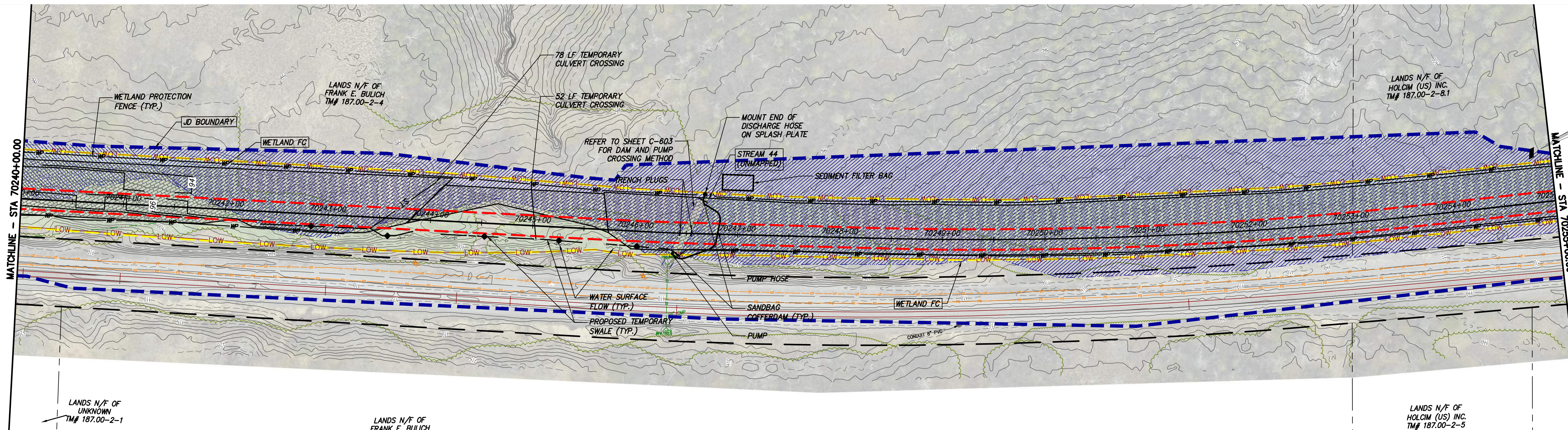
ISSUED FOR PERMITTING

No.	DATE	SUBMITTAL / REVISION DESCRIPTION	DB	APP
F	03/17/2023	FINAL SUBMISSION	BL	JL
E	01/24/2023	DRAFT FINAL SUBMISSION	RB	JL
D	11/16/2022	PRELIMINARY DRAFT FINAL SUBMISSION	RB	JL
	04/29/2022	60% DESIGN SUBMISSION	RB	JL
B	03/22/2022	PRELIMINARY DESIGN DEVELOPMENT	BV	TK
A	02/14/2022	PRELIMINARY PROGRESS	BV	TK

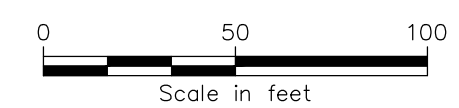
CHAMPLAIN HUDSON POWER EXPRESS
SEGMENT 11 (PACKAGE 7A) - CSX: CATSKILL
EROSION AND SEDIMENT CONTROL PLAN
STA. 70225+00.00 TO STA. 70240+00.00

DRAWN BY: BL DESIGNED BY: SL APPROVED BY: JL SCALE AS SHOWN DATE 03/17/2023
REV. NO. F SH. NO. XX OF

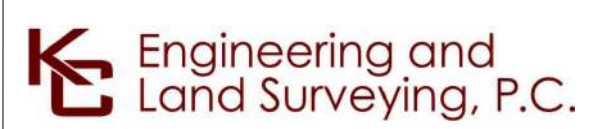
KIEWIT PROJECT NO.	21162
KC PROJECT NO.	120174
DRAWING NO.	C-413



STA. 70240+00.00 TO STA. 70255+00.00 PLAN VIEW
SCALE: 1" = 50'



File: P:\2020\74-CHPE-CABLE-INSTALL-KEWIT\60_CAD\20_ENGINEERING_CAD_FILES\PACKAGE_7A\NY_ENVIRONMENTAL_(BROSON_CONTROL)\01_KCE\SHEET_FILES\21162_7A_C_408-417.DWG. Saved: 3/17/2023 10:52:34 AM. Plotted: 3/17/2023 11:09:55 AM. Current User: Benson Lam LastSavedBy: blam



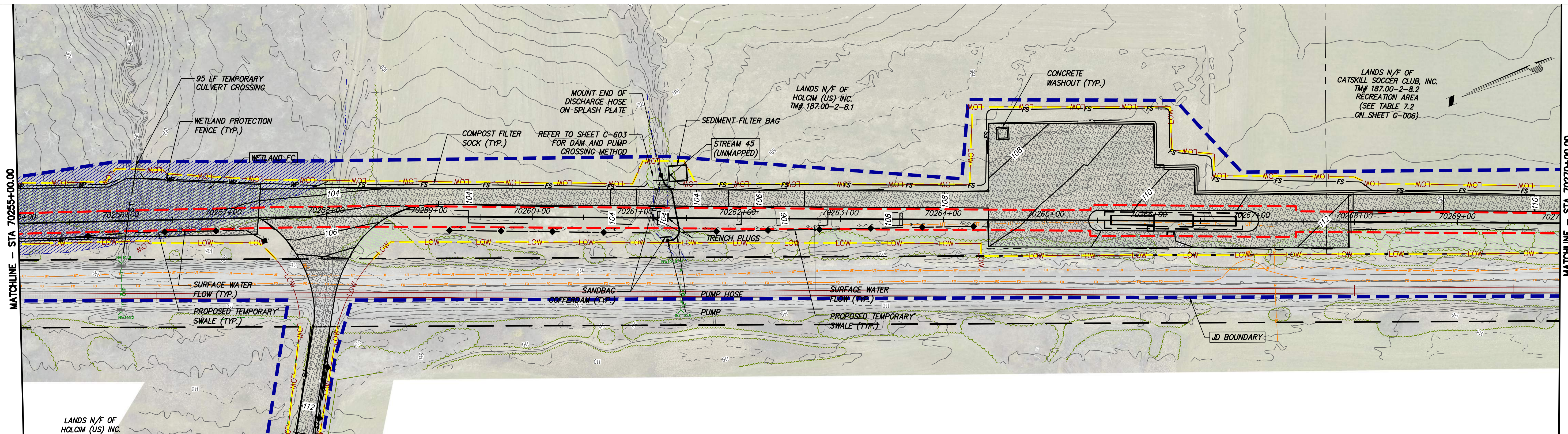
IT IS A VIOLATION OF LAW FOR ANY PERSON, UNLESS THEY ARE ACTING UNDER THE DIRECTION OF A LICENSED PROFESSIONAL ENGINEER, ARCHITECT, LANDSCAPE ARCHITECT OR LAND SURVEYOR TO ALTER AN ITEM IN ANY WAY, IF AN ITEM BEARING THE STAMP OF A LICENSED PROFESSIONAL IS ALTERED. THE ALTERING ENGINEER, ARCHITECT, LANDSCAPE ARCHITECT OR LAND SURVEYOR SHALL STAMP THE DOCUMENT AND INCLUDE THE NOTATION "ALTERED BY" FOLLOWED BY THEIR SIGNATURE, THE DATE OF SUCH ALTERATION, AND A SPECIFIC DESCRIPTION OF THE ALTERATION.

ISSUED FOR PERMITTING

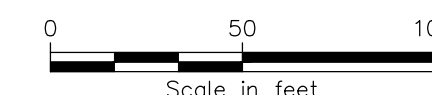
No.	DATE	SUBMITTAL / REVISION DESCRIPTION	DB	APP
F	03/17/2023	FINAL SUBMISSION	BL	JL
E	01/24/2023	DRAFT FINAL SUBMISSION	RB	JL
D	11/16/2022	PRELIMINARY DRAFT FINAL SUBMISSION	RB	JL
	04/29/2022	60% DESIGN SUBMISSION	RB	JL
B	03/22/2022	PRELIMINARY DESIGN DEVELOPMENT	BV	TK
A	02/14/2022	PRELIMINARY PROGRESS	BV	TK

CHAMPLAIN HUDSON POWER EXPRESS
SEGMENT 11 (PACKAGE 7A) - CSX: CATSKILL
EROSION AND SEDIMENT CONTROL PLAN
STA. 70240+00.00 TO STA. 70255+00.00

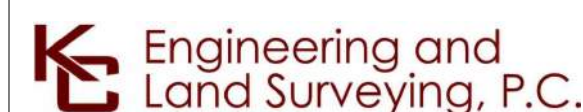
KIEWIT PROJECT NO.	21162
KC PROJECT NO.	120174
DRAWING NO.	C-414
DRAWN BY:	BL
DESIGNED BY:	SL
APPROVED BY:	JL
SCALE	AS SHOWN
REV. NO.	F
DATE	03/17/2023
SH. NO.	XX OF



STA. 70255+00.00 TO STA. 70270+00.00 PLAN VIEW
SCALE: 1" = 50'



File: P:\120174-CHPE-INSTALL-KEWIT\60_CAD\20_ENGINEERING_CAD_FILES\PACKAGE_7A\NY_ENVIRONMENTAL_(BROSON_CONTROL)\01_KCE\SHSHEET_FILES\21162_7A_C_408-417.DWG. Saved: 3/17/2023 11:14:42 AM. Plotted: 3/17/2023 11:14:42 AM. Current User: Benson Lum. LastSavedBy: blom



IT IS A VIOLATION OF LAW FOR ANY PERSON, UNLESS THEY ARE ACTING UNDER THE DIRECTION OF A LICENSED PROFESSIONAL ENGINEER, ARCHITECT, LANDSCAPE ARCHITECT OR LAND SURVEYOR TO ALTER AN ITEM IN ANY WAY, IF AN ITEM BEARING THE STAMP OF A LICENSED PROFESSIONAL IS ALTERED. THE ALTERING ENGINEER, ARCHITECT, LANDSCAPE ARCHITECT OR LAND SURVEYOR SHALL STAMP THE DOCUMENT AND INCLUDE THE NOTATION "ALTERED BY" FOLLOWED BY THEIR SIGNATURE, THE DATE OF SUCH ALTERATION, AND A SPECIFIC DESCRIPTION OF THE ALTERATION.

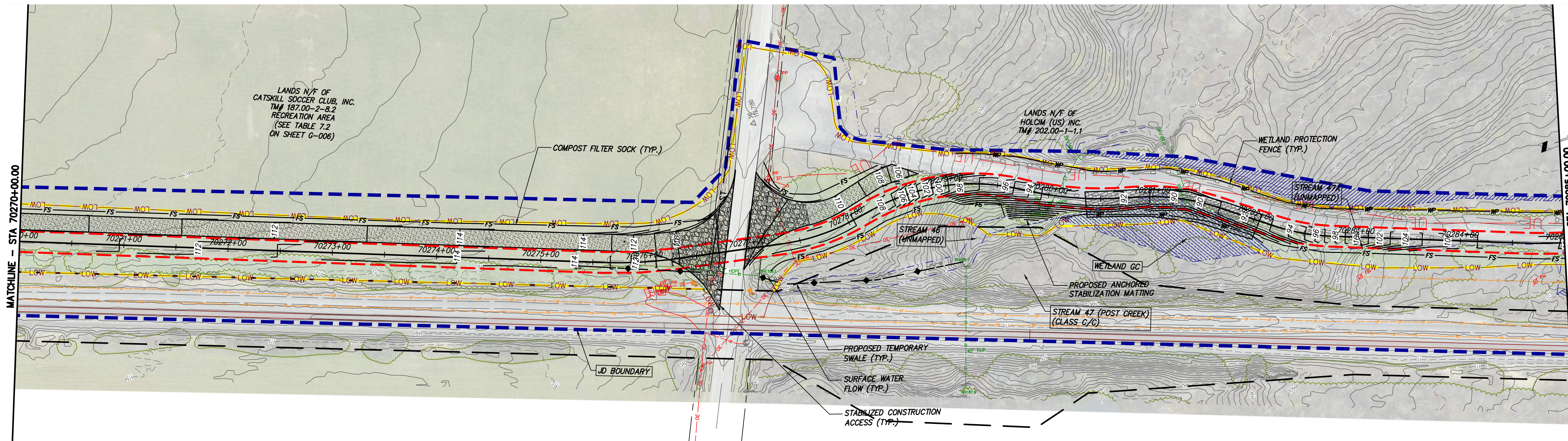
ISSUED FOR PERMITTING

No.	DATE	SUBMITTAL / REVISION DESCRIPTION	DB	APP
F	03/17/2023	FINAL SUBMISSION	BL	JL
E	01/24/2023	DRAFT FINAL SUBMISSION	RB	JL
D	11/16/2022	PRELIMINARY DRAFT FINAL SUBMISSION	RB	JL
	04/29/2022	60% DESIGN SUBMISSION	RB	JL
B	03/22/2022	PRELIMINARY DESIGN DEVELOPMENT	BV	TK
A	02/14/2022	PRELIMINARY PROGRESS	BV	TK

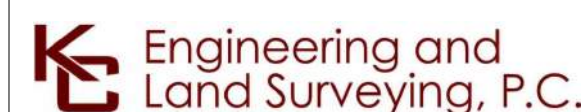
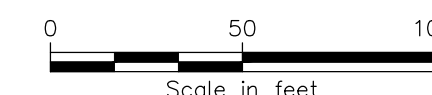
CHAMPLAIN HUDSON POWER EXPRESS
SEGMENT 11 (PACKAGE 7A) - CSX: CATSKILL
EROSION AND SEDIMENT CONTROL PLAN
STA. 70255+00.00 TO STA. 70270+00.00

KIEWIT PROJECT NO.	21162
KC PROJECT NO.	120174
DRAWING NO.	C-415
DATE	03/17/2023
SH.NO.	XX OF

DRAWN BY: BL DESIGNED BY: SL APPROVED BY: JL SCALE AS SHOWN DATE 03/17/2023
REV. NO. F SH.NO. XX OF



STA. 70270+00.00 TO STA. 70285+00.00 PLAN VIEW
 SCALE: 1" = 50'



IT IS A VIOLATION OF LAW FOR ANY PERSON, UNLESS THEY ARE ACTING UNDER THE DIRECTION OF A LICENSED PROFESSIONAL ENGINEER, ARCHITECT, LANDSCAPE ARCHITECT OR LAND SURVEYOR TO ALTER AN ITEM IN ANY WAY, IF AN ITEM BEARING THE STAMP OF A LICENSED PROFESSIONAL IS ALTERED. THE ALTERING ENGINEER, ARCHITECT, LANDSCAPE ARCHITECT OR LAND SURVEYOR SHALL STAMP THE DOCUMENT AND INCLUDE THE NOTATION "ALTERED BY" FOLLOWED BY THEIR SIGNATURE, THE DATE OF SUCH ALTERATION, AND A SPECIFIC DESCRIPTION OF THE ALTERATION.

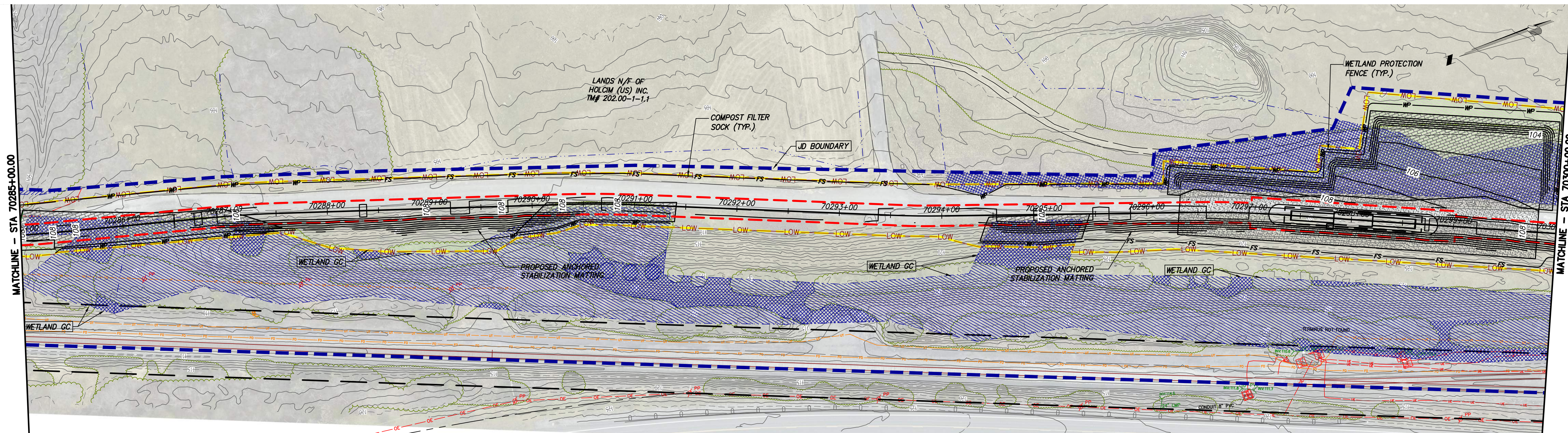
ISSUED FOR PERMITTING

No.	DATE	SUBMITTAL / REVISION DESCRIPTION	DB	APP
F	03/17/2023	FINAL SUBMISSION	BL	JL
E	01/24/2023	DRAFT FINAL SUBMISSION	RB	JL
D	11/16/2022	PRELIMINARY DRAFT FINAL SUBMISSION	RB	JL
	04/29/2022	60% DESIGN SUBMISSION	RB	JL
B	03/22/2022	PRELIMINARY DESIGN DEVELOPMENT	BV	TK
A	02/14/2022	PRELIMINARY PROGRESS	BV	TK

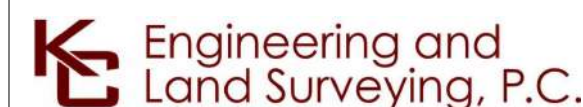
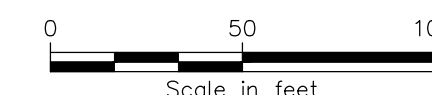
CHAMPLAIN HUDSON POWER EXPRESS
 SEGMENT 11 (PACKAGE 7A) - CSX: CATSKILL
 EROSION AND SEDIMENT CONTROL PLAN
 STA. 70270+00.00 TO STA. 70285+00.00

KIEWIT PROJECT NO.	21162
KC PROJECT NO.	120174
DRAWING NO.	C-416
DATE	03/17/2023
SH.NO.	XX OF

DRAWN BY: BL DESIGNED BY: SL APPROVED BY: JL SCALE AS SHOWN DATE 03/17/2023
 REV. NO. F SH.NO. XX OF



STA. 70285+00.00 TO STA. 70300+00.00 PLAN VIEW
SCALE: 1" = 50'



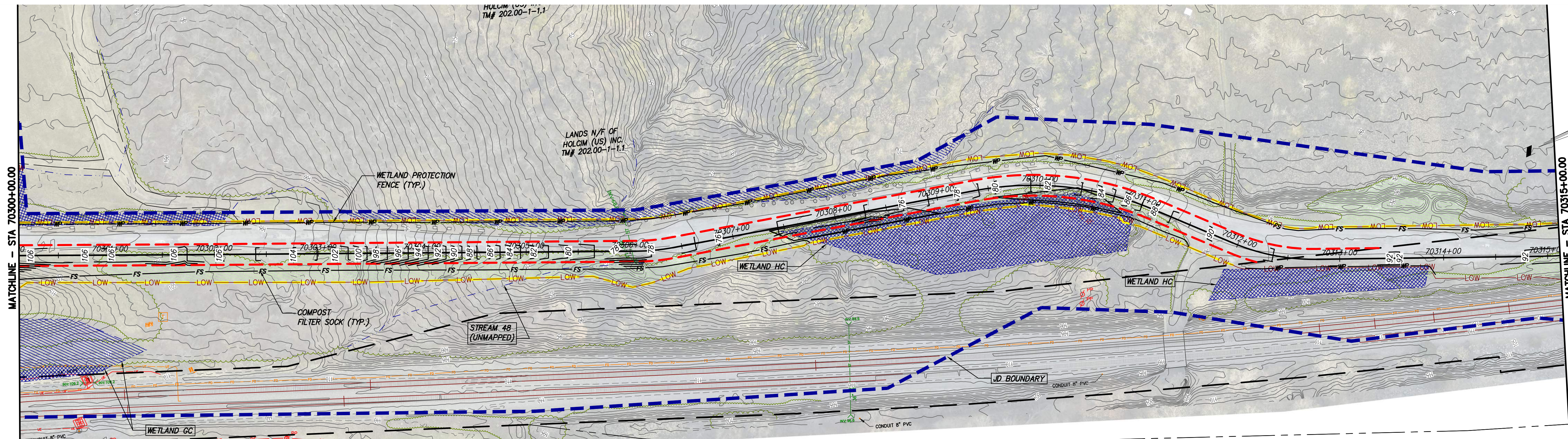
IT IS A VIOLATION OF LAW FOR ANY PERSON, UNLESS THEY ARE ACTING UNDER THE DIRECTION OF A LICENSED PROFESSIONAL ENGINEER, ARCHITECT, LANDSCAPE ARCHITECT OR LAND SURVEYOR TO ALTER AN ITEM IN ANY WAY, IF AN ITEM BEARING THE STAMP OF A LICENSED PROFESSIONAL IS ALTERED. THE ALTERING ENGINEER, ARCHITECT, LANDSCAPE ARCHITECT OR LAND SURVEYOR SHALL STAMP THE DOCUMENT AND INCLUDE THE NOTATION "ALTERED BY" FOLLOWED BY THEIR SIGNATURE, THE DATE OF SUCH ALTERATION, AND A SPECIFIC DESCRIPTION OF THE ALTERATION.

ISSUED FOR PERMITTING

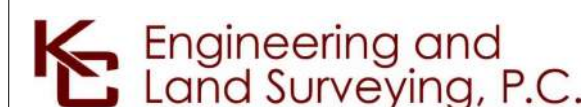
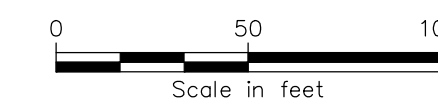
No.	DATE	SUBMITTAL / REVISION DESCRIPTION	DB	APP
F	03/17/2023	FINAL SUBMISSION	BL	JL
E	01/24/2023	DRAFT FINAL SUBMISSION	RB	JL
D	11/16/2022	PRELIMINARY DRAFT FINAL SUBMISSION	RB	JL
	04/29/2022	60% DESIGN SUBMISSION	RB	JL
B	03/22/2022	PRELIMINARY DESIGN DEVELOPMENT	BV	TK
A	02/14/2022	PRELIMINARY PROGRESS	BV	TK

CHAMPLAIN HUDSON POWER EXPRESS
SEGMENT 11 (PACKAGE 7A) - CSX: CATSKILL
EROSION AND SEDIMENT CONTROL PLAN
STA. 70285+00.00 TO STA. 70300+00.00

KIEWIT PROJECT NO.	21162
KC PROJECT NO.	120174
DRAWING NO.	C-417
DRAWN BY:	BL
DESIGNED BY:	SL
APPROVED BY:	JL
SCALE	AS SHOWN
REV. NO.	F
DATE	03/17/2023
SH. NO.	XX OF



STA. 70300+00.00 TO STA. 70315+00.00 PLAN VIEW
SCALE: 1" = 50'



IT IS A VIOLATION OF LAW FOR ANY PERSON, UNLESS THEY ARE ACTING UNDER THE DIRECTION OF A LICENSED PROFESSIONAL ENGINEER, ARCHITECT, LANDSCAPE ARCHITECT OR LAND SURVEYOR TO ALTER AN ITEM IN ANY WAY, IF AN ITEM BEARING THE STAMP OF A LICENSED PROFESSIONAL IS ALTERED. THE ALTERING ENGINEER, ARCHITECT, LANDSCAPE ARCHITECT OR LAND SURVEYOR SHALL STAMP THE DOCUMENT AND INCLUDE THE NOTATION "ALTERED BY" FOLLOWED BY THEIR SIGNATURE, THE DATE OF SUCH ALTERATION, AND A SPECIFIC DESCRIPTION OF THE ALTERATION.

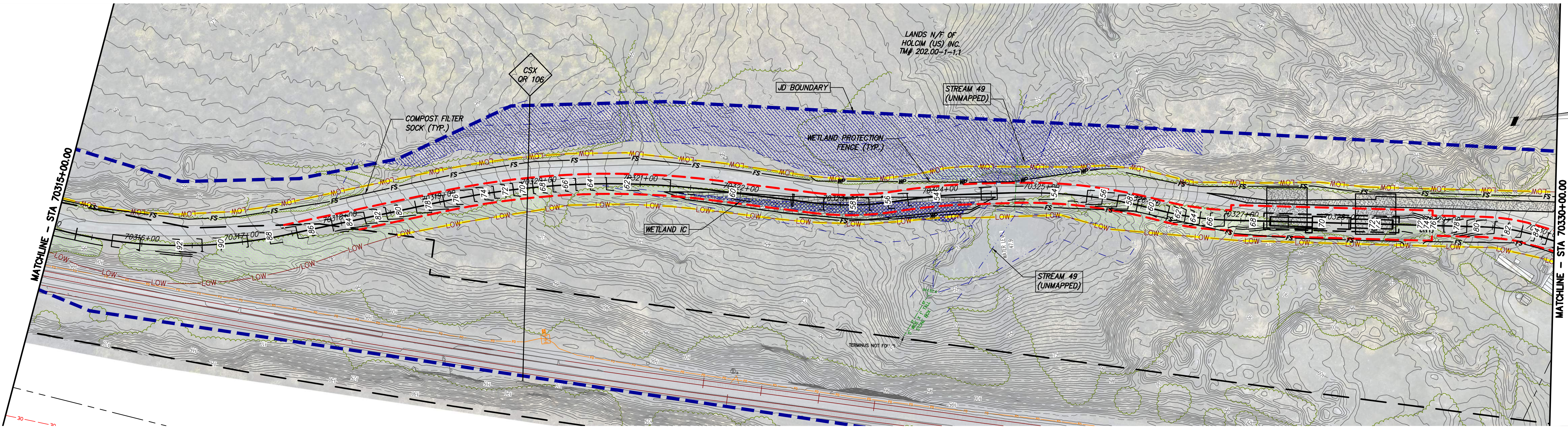
ISSUED FOR PERMITTING

No.	DATE	SUBMITTAL / REVISION DESCRIPTION	DB	APP
F	03/17/2023	FINAL SUBMISSION	BL	JL
E	01/24/2023	DRAFT FINAL SUBMISSION	RB	JL
D	11/16/2022	PRELIMINARY DRAFT FINAL SUBMISSION	RB	JL
	04/29/2022	60% DESIGN SUBMISSION	RB	JL
B	03/22/2022	PRELIMINARY DESIGN DEVELOPMENT	BV	TK
A	02/14/2022	PRELIMINARY PROGRESS	BV	TK

CHAMPLAIN HUDSON POWER EXPRESS
SEGMENT 11 (PACKAGE 7A) - CSX: CATSKILL
EROSION AND SEDIMENT CONTROL PLAN
STA. 70300+00.00 TO STA. 70315+00.00

KIEWIT PROJECT NO.	21162
KC PROJECT NO.	120174
DRAWING NO.	C-418
DRAWN BY:	BL
DESIGNED BY:	SL
APPROVED BY:	JL
SCALE	AS SHOWN
REV. NO.	F
DATE	03/17/2023
SH. NO.	XX OF

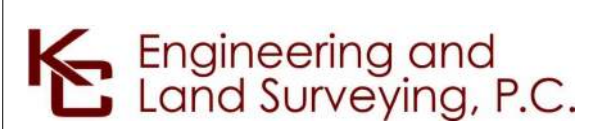
File: P:\202174-CHPE-CABLE-INSTALL-KEWIT\60_CAD\20_ENGINEERING_CAD_FILES\PACKAGE_7A\NY_ENVIRONMENTAL_(BROSON_CONTROL)\01_KCE\SHEET_FILES\21162_7A_C_418-428.DWG. Saved: 3/17/2023 10:33:13 AM. Plotted: 3/17/2023 10:38:48 AM. Current User: Sean Lenahan. Last Saved By: slenahan



STA. 70315+00.00 TO STA. 70330+00.00 PLAN VIEW
SCALE: 1" = 50'



File: P:\2021\74-CHPE\CABLE_INSTALL\KIEWIT\60_CAD\CAD\20_ENGINEERING\CAD_FILES\PACKAGE_7A\NY_ENVIRONMENTAL_(BROSON_CONTROL)\01_KCE\SHEET_FILES\21162_7A_C_418-428.DWG Saved: 3/17/2023 10:33:13 AM Plotted: 3/17/2023 10:42:48 AM Current User: Sean Lenahan Last Saved By: slenahan



IT IS A VIOLATION OF LAW FOR ANY PERSON, UNLESS THEY ARE ACTING UNDER THE DIRECTION OF A LICENSED PROFESSIONAL ENGINEER, ARCHITECT, LANDSCAPE ARCHITECT OR LAND SURVEYOR TO ALTER AN ITEM IN ANY WAY, IF AN ITEM BEARING THE STAMP OF A LICENSED PROFESSIONAL IS ALTERED. THE ALTERING ENGINEER, ARCHITECT, LANDSCAPE ARCHITECT OR LAND SURVEYOR SHALL STAMP THE DOCUMENT AND INCLUDE THE NOTATION "ALTERED BY" FOLLOWED BY THEIR SIGNATURE, THE DATE OF SUCH ALTERATION, AND A SPECIFIC DESCRIPTION OF THE ALTERATION.

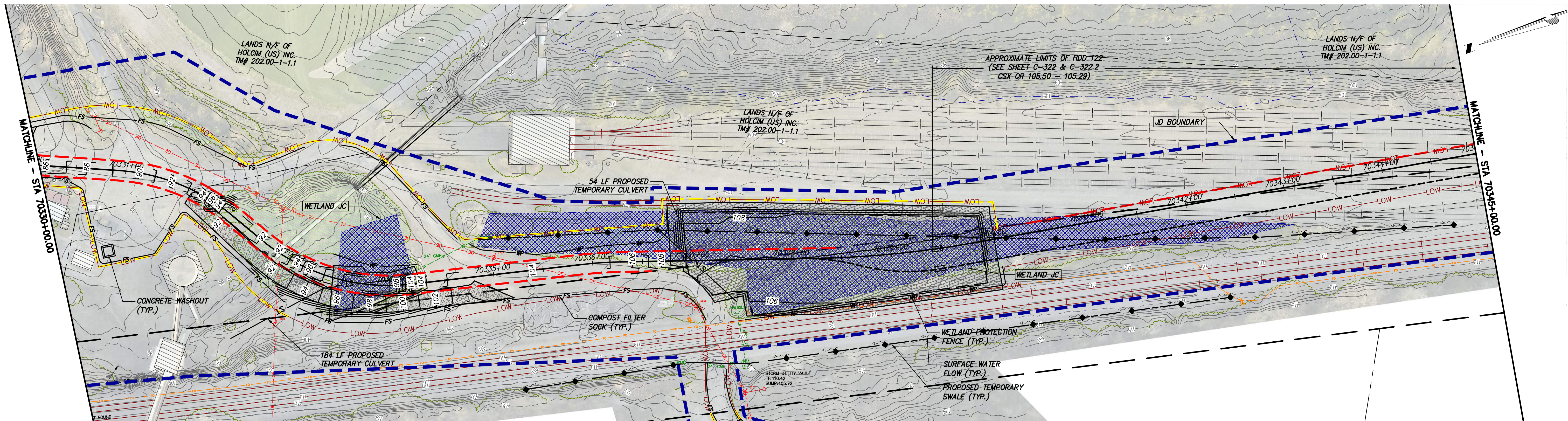
ISSUED FOR PERMITTING

No.	DATE	SUBMITTAL / REVISION DESCRIPTION	DB	APP
F	03/17/2023	FINAL SUBMISSION	BL	JL
E	01/24/2023	DRAFT FINAL SUBMISSION	RB	JL
D	11/16/2022	PRELIMINARY DRAFT FINAL SUBMISSION	RB	JL
	04/29/2022	60% DESIGN SUBMISSION	RB	JL
B	03/22/2022	PRELIMINARY DESIGN DEVELOPMENT	BV	TK
A	02/14/2022	PRELIMINARY PROGRESS	BV	TK

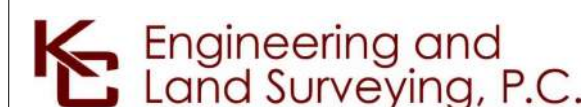
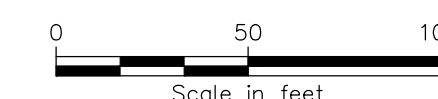
CHAMPLAIN HUDSON POWER EXPRESS
 SEGMENT 11 (PACKAGE 7A) - CSX: CATSKILL
 EROSION AND SEDIMENT CONTROL PLAN
 STA. 70315+00.00 TO STA. 70330+00.00

DRAWN BY: BL DESIGNED BY: SL APPROVED BY: JL SCALE AS SHOWN DATE 03/17/2023
 REV. NO. F SH. NO. XX OF

KIEWIT PROJECT NO.	21162
KC PROJECT NO.	120174
DRAWING NO.	C-419



STA. 70330+00.00 TO STA. 70345+00.00 PLAN VIEW
SCALE: 1" = 50'



IT IS A VIOLATION OF LAW FOR ANY PERSON, UNLESS THEY ARE ACTING UNDER THE DIRECTION OF A LICENSED PROFESSIONAL ENGINEER, ARCHITECT, LANDSCAPE ARCHITECT OR LAND SURVEYOR TO ALTER AN ITEM IN ANY WAY, IF AN ITEM BEARING THE STAMP OF A LICENSED PROFESSIONAL IS ALTERED. THE ALTERING ENGINEER, ARCHITECT, LANDSCAPE ARCHITECT OR LAND SURVEYOR SHALL STAMP THE DOCUMENT AND INCLUDE THE NOTATION "ALTERED BY" FOLLOWED BY THEIR SIGNATURE, THE DATE OF SUCH ALTERATION, AND A SPECIFIC DESCRIPTION OF THE ALTERATION.

ISSUED FOR PERMITTING

No.	DATE	SUBMITTAL / REVISION DESCRIPTION	DB	APP
F	03/17/2023	FINAL SUBMISSION	BL	JL
E	01/24/2023	DRAFT FINAL SUBMISSION	RB	JL
D	11/16/2022	PRELIMINARY DRAFT FINAL SUBMISSION	RB	JL
	04/29/2022	60% DESIGN SUBMISSION	RB	JL
B	03/22/2022	PRELIMINARY DESIGN DEVELOPMENT	BV	TK
A	02/14/2022	PRELIMINARY PROGRESS	BV	TK

CHAMPLAIN HUDSON POWER EXPRESS
SEGMENT 11 (PACKAGE 7A) - CSX: CATSKILL
EROSION AND SEDIMENT CONTROL PLAN
STA. 70330+00.00 TO STA. 70345+00.00

KIEWIT PROJECT NO.	21162
KC PROJECT NO.	120174
DRAWING NO.	C-420
DATE	03/17/2023
SH.NO.	XX OF

DRAWN BY: BL DESIGNED BY: SL APPROVED BY: JL SCALE AS SHOWN DATE 03/17/2023
REV. NO. F SH.NO. XX OF

File: P:\2020\74-CHPE\CABLE_INSTALL\KIEWIT\60_CAD\CAD\20_ENGINEERING_CAD_FILES\PACKAGE_7A\NY_ENVIRONMENTAL_(BROSON_CONTROL)\01_KCE\SHEET_FILES\21162_7A_C_418-428.DWG Saved: 3/17/2023 10:33:13 AM Plotted: 3/17/2023 10:46:54 AM Current User: Sean Lenahan Last Saved By: slenahan