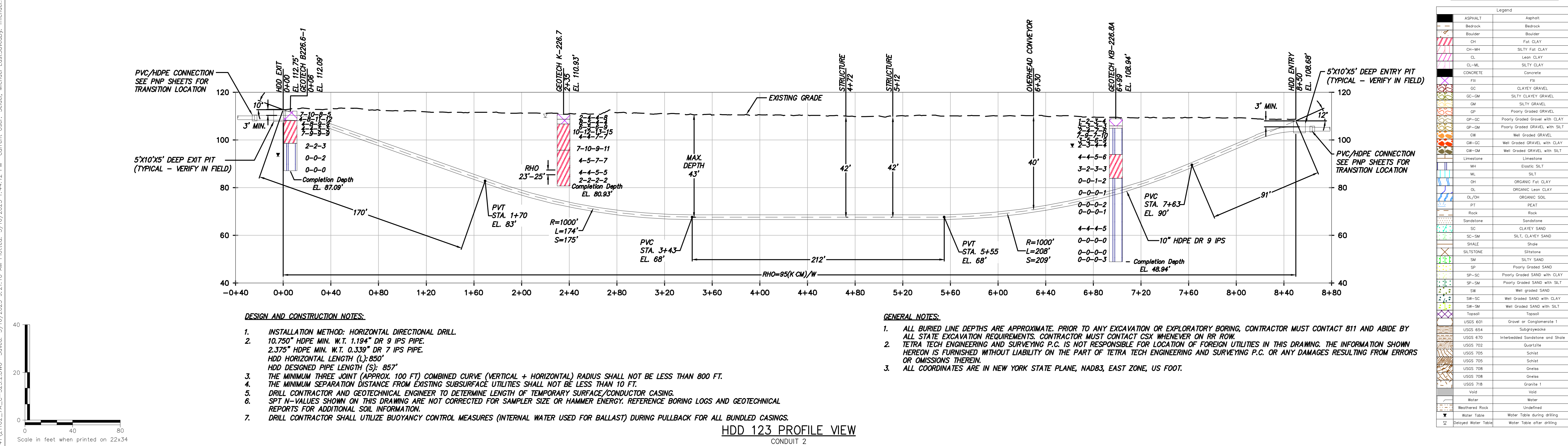
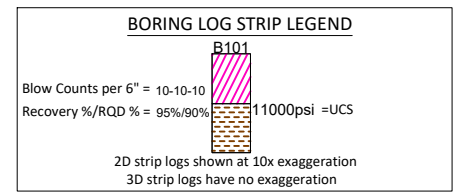
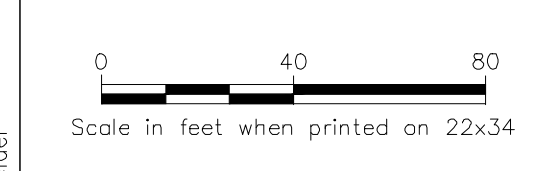
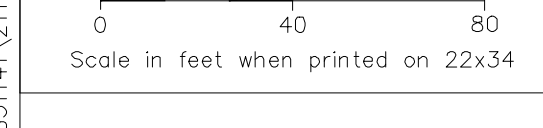


HDD 123 PLAN VIEW
CONDUIT 2



HDD 123 PROFILE VIEW
CONDUIT 2



DESIGN AND CONSTRUCTION NOTES:

1. INSTALLATION METHOD: HORIZONTAL DIRECTIONAL DRILL
2. 10.750" HDPE MIN. W.T. 1.194" DR 9 IPS PIPE.
2.375" HDPE MIN. W.T. 0.339" DR 7 IPS PIPE.
HDD HORIZONTAL LENGTH (L): 850'
HDD DESIGNED PIPE LENGTH (S): 857'
3. THE MINIMUM THREE JOINT (APPROX. 100 FT) COMBINED CURVE (VERTICAL + HORIZONTAL) RADIUS SHALL NOT BE LESS THAN 800 FT.
4. THE MINIMUM SEPARATION DISTANCE FROM EXISTING SUBSURFACE UTILITIES SHALL NOT BE LESS THAN 10 FT.
5. DRILL CONTRACTOR AND GEOTECHNICAL ENGINEER TO DETERMINE LENGTH OF TEMPORARY SURFACE/CONDUCTOR CASING.
6. SPT N-VALUES SHOWN ON THIS DRAWING ARE NOT CORRECTED FOR SAMPLER SIZE OR HAMMER ENERGY. REFERENCE BORING LOGS AND GEOTECHNICAL REPORTS FOR ADDITIONAL SOIL INFORMATION.
7. DRILL CONTRACTOR SHALL UTILIZE BUOYANCY CONTROL MEASURES (INTERNAL WATER USED FOR BALLAST) DURING PULLBACK FOR ALL BUNDLED CASINGS.

GENERAL NOTES:

1. ALL BURIED LINE DEPTHS ARE APPROXIMATE. PRIOR TO ANY EXCAVATION OR EXPLORATORY BORING, CONTRACTOR MUST CONTACT 811 AND ABIDE BY ALL STATE EXCAVATION REQUIREMENTS. CONTRACTOR MUST CONTACT CSX WHENEVER ON RR ROW.
2. TETRA TECH ENGINEERING AND SURVEYING P.C. IS NOT RESPONSIBLE FOR LOCATION OF FOREIGN UTILITIES IN THIS DRAWING. THE INFORMATION SHOWN HEREON IS FURNISHED WITHOUT LIABILITY ON THE PART OF TETRA TECH ENGINEERING AND SURVEYING P.C. OR ANY DAMAGES RESULTING FROM ERRORS OR OMISSIONS THEREIN.
3. ALL COORDINATES ARE IN NEW YORK STATE PLANE, NAD83, EAST ZONE, US FOOT.



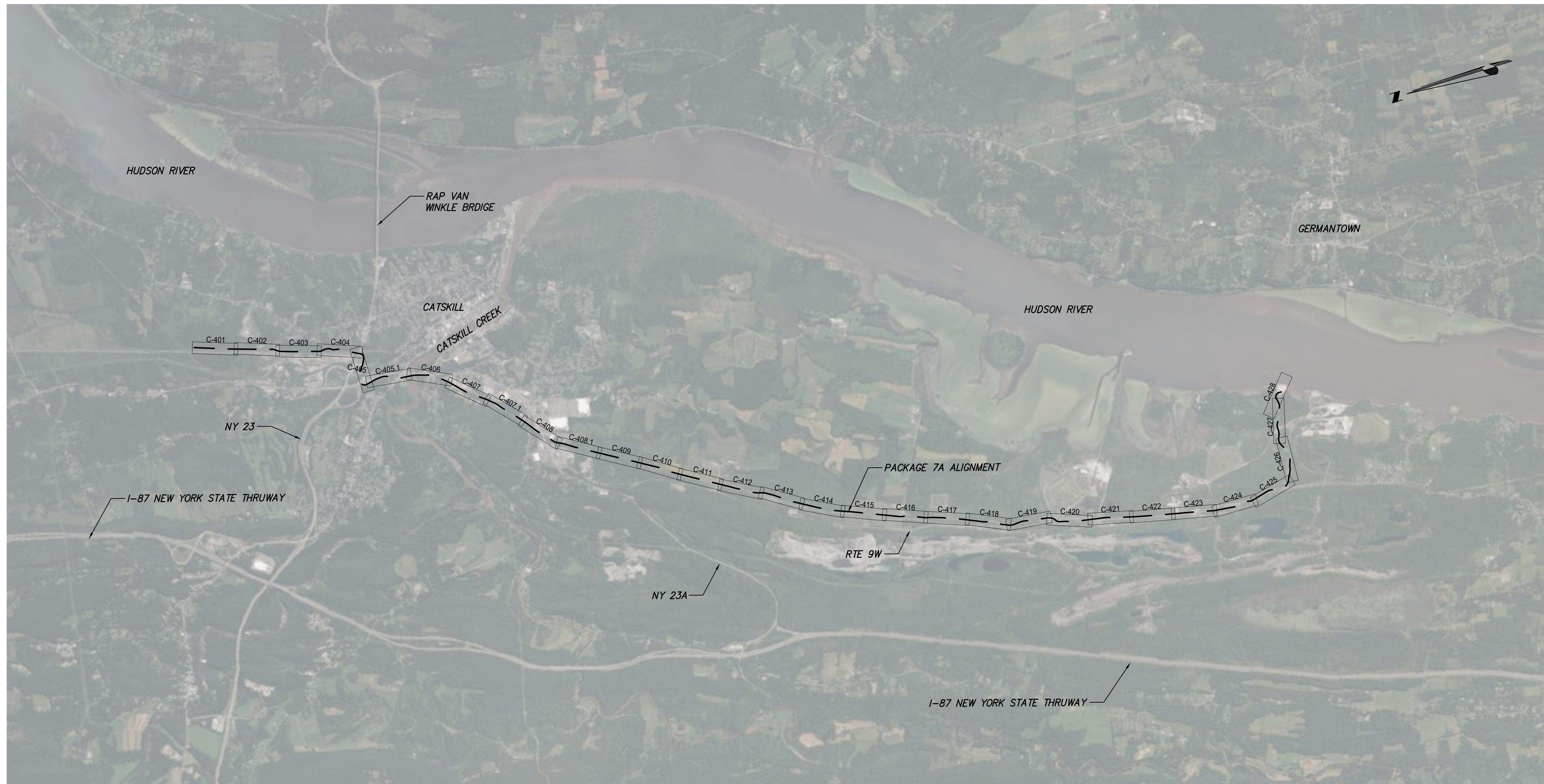
IT IS A VIOLATION OF LAW FOR ANY PERSON, UNLESS THEY ARE ACTING UNDER THE DIRECTION OF A LICENSED PROFESSIONAL ENGINEER, ARCHITECT, LANDSCAPE ARCHITECT OR LAND SURVEYOR TO ALTER AN ITEM IN ANY WAY. IF AN ITEM BEARING THE STAMP OF A LICENSED PROFESSIONAL IS ALTERED, THE ALTERING ENGINEER, ARCHITECT, LANDSCAPE ARCHITECT OR LAND SURVEYOR SHALL STAMP THE DOCUMENT AND INCLUDE THE NOTATION "ALTERED BY" FOLLOWED BY THEIR SIGNATURE, THE DATE OF SUCH ALTERATION, AND A SPECIFIC DESCRIPTION OF THE ALTERATION.

ISSUED FOR PERMITTING

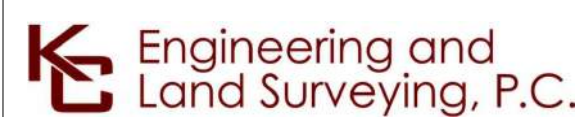
No.	DATE	SUBMITTAL / REVISION DESCRIPTION	DB	APP
D	03/17/2023	FINAL SUBMISSION	MRS	EJK
C	01/24/2023	DRAFT FINAL SUBMISSION	MRS	EJK
B	11/16/2022	PRELIMINARY DRAFT FINAL SUBMISSION	MRS	EJK
A	04/29/2022	60% DESIGN SUBMISSION	MRS	EJK

CHAMPLAIN HUDSON POWER EXPRESS
SEGMENT 11 (PACKAGE 7A)- CSX: CATSKILL
 PLAN AND PROFILE - HDD 123
 PRIVATE PLANT CROSSING - CONDUIT 2
 GREENE COUNTY, NY

KIEWIT PROJECT NO.	21162
TT PROJECT NO.	204-3701
DRAWING NO.	C-323.2
DRAWN BY:	MRS
DESIGNED BY:	AMC
APPROVED BY:	EJK
SCALE	AS SHOWN
REV. NO.	DATE
	03/17/2023
	1 OF 1



E&S KEY PLAN
SCALE: 1" = 2000'



IT IS A VIOLATION OF LAW FOR ANY PERSON, UNLESS THEY ARE ACTING UNDER THE DIRECTION OF A LICENSED PROFESSIONAL ENGINEER, ARCHITECT, LANDSCAPE ARCHITECT OR LAND SURVEYOR TO ALTER AN ITEM IN ANY WAY. IF AN ITEM BEARING THE STAMP OF A LICENSED PROFESSIONAL IS ALTERED, THE ALTERING ENGINEER, ARCHITECT, LANDSCAPE ARCHITECT OR LAND SURVEYOR SHALL STAMP THE DOCUMENT AND INCLUDE THE NOTATION "ALTERED BY" FOLLOWED BY THEIR SIGNATURE, THE DATE OF SUCH ALTERATION, AND A SPECIFIC DESCRIPTION OF THE ALTERATION.

ISSUED FOR PERMITTING

No.	DATE	SUBMITTAL / REVISION DESCRIPTION	DB	APP
F	03/17/2023	FINAL SUBMISSION	BL	JL
E	01/24/2023	DRAFT FINAL SUBMISSION	RB	JL
D	11/16/2022	PRELIMINARY DRAFT FINAL SUBMISSION	RB	JL
	04/29/2022	60% DESIGN SUBMISSION	RB	JL
B	03/22/2022	PRELIMINARY DESIGN DEVELOPMENT	BV	TK
A	02/14/2022	PRELIMINARY PROGRESS	BV	TK

CHAMPLAIN HUDSON POWER EXPRESS
SEGMENT 11 (PACKAGE 7A) - CSX: CATSKILL
E&S KEY PLAN

KIEWIT PROJECT NO. 21162
KC PROJECT NO. 120174
DRAWING NO.

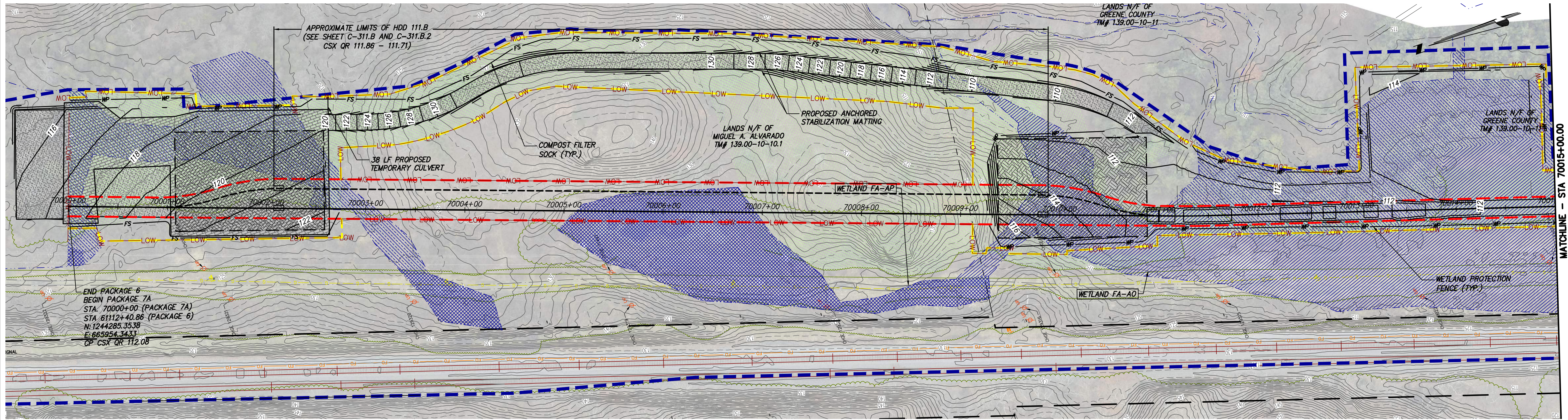
C-400

DRAWN BY: BL DESIGNED BY: SL APPROVED BY: JL SCALE AS SHOWN DATE 03/17/2023
REV. NO. F SH. NO. XXX OF

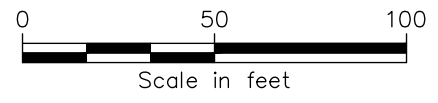
A

B

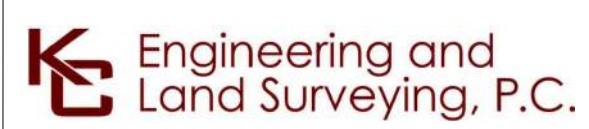
File: P:\120174-CHPE-CABLE-INSTALL-KIEWIT\60_CAD\20_ENGINEERING_CAD_FILES\PACKAGE_7A\NY_ENVIRONMENTAL_(BROSON_CONTROL)\01_KCE\SHEET_FILES\21162_7A_C_400.DWG Saved: 3/15/2023 11:33:25 PM Plotted: 3/17/2023 10:10:15 AM Current User: Bobby Donit Last Saved By: blam



STA. 70000+00.00 TO STA. 70015+00.00 PLAN VIEW
SCALE: 1" = 50'



File: P:\120174-CHPE-CABLE_INSTALL-KEWIT\60_CAD\20_ENGINEERING_CAD_FILES\PACKAGE_7A\NY_ENVIRONMENTAL_(BROSON_CONTROL)\01_KCE\SHEET_FILES\21162_7A_C_401-406.DWG
 Saved: 3/17/2023 10:07:02 AM
 Plotted: 3/17/2023 10:13:35 AM
 User: Bobby Dohi
 Last Saved By: blom



IT IS A VIOLATION OF LAW FOR ANY PERSON, UNLESS THEY ARE ACTING UNDER THE DIRECTION OF A LICENSED PROFESSIONAL ENGINEER, ARCHITECT, LANDSCAPE ARCHITECT OR LAND SURVEYOR TO ALTER AN ITEM IN ANY WAY, IF AN ITEM BEARING THE STAMP OF A LICENSED PROFESSIONAL IS ALTERED. THE ALTERING ENGINEER, ARCHITECT, LANDSCAPE ARCHITECT OR LAND SURVEYOR SHALL STAMP THE DOCUMENT AND INCLUDE THE NOTATION "ALTERED BY" FOLLOWED BY THEIR SIGNATURE, THE DATE OF SUCH ALTERATION, AND A SPECIFIC DESCRIPTION OF THE ALTERATION.

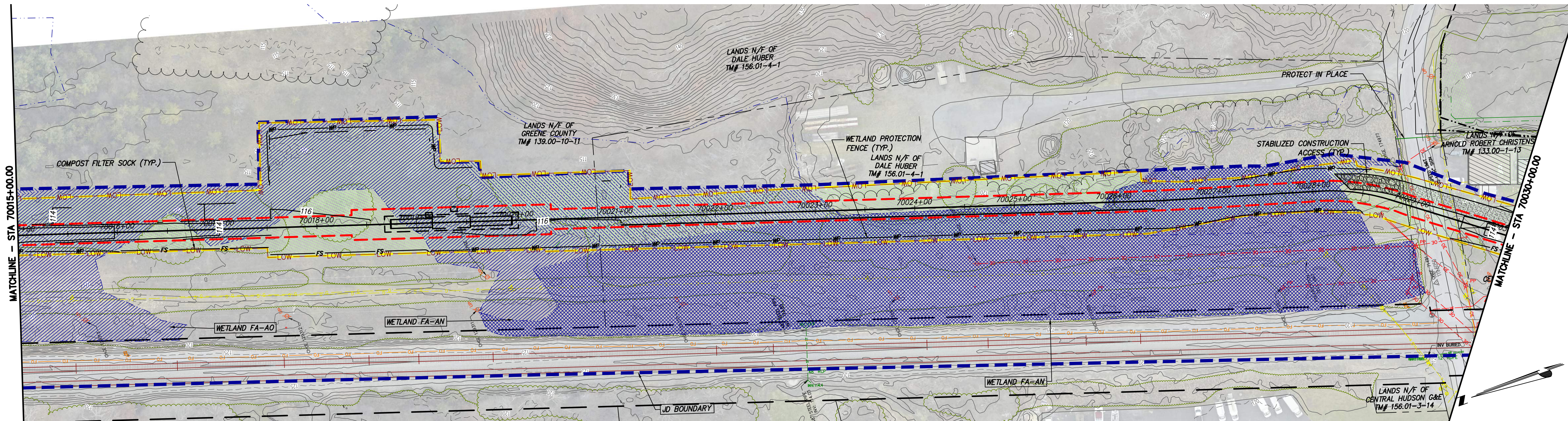
ISSUED FOR PERMITTING

No.	DATE	SUBMITTAL / REVISION DESCRIPTION	DB	APP
F	03/17/2023	FINAL SUBMISSION	BL	JL
E	01/24/2023	DRAFT FINAL SUBMISSION	RB	JL
D	11/16/2022	PRELIMINARY DRAFT FINAL SUBMISSION	RB	JL
	04/29/2022	60% DESIGN SUBMISSION	RB	JL
B	03/22/2022	PRELIMINARY DESIGN DEVELOPMENT	BV	TK
A	02/14/2022	PRELIMINARY PROGRESS	BV	TK

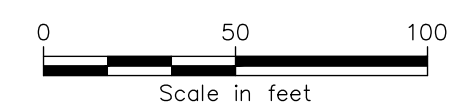
CHAMPLAIN HUDSON POWER EXPRESS
 SEGMENT 11 (PACKAGE 7A) - CSX: CATSKILL
 EROSION AND SEDIMENT CONTROL PLAN
 STA. 70000+00.00 TO STA. 70015+00.00

DRAWN BY: BL DESIGNED BY: SL APPROVED BY: JL SCALE AS SHOWN DATE 03/17/2023
 REV. NO. F SH. NO. -- OF

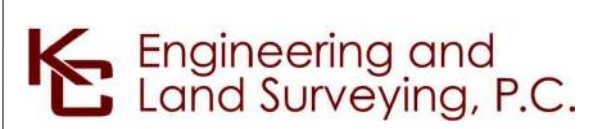
KIEWIT PROJECT NO.	21162
KC PROJECT NO.	120174
DRAWING NO.	C-401



STA. 70015+00.00 TO STA. 70030+00.00 PLAN VIEW
SCALE: 1" = 50'



File: P:\120174-CHPE-CABLE-INSTALL-KEWIT\60_CAD\CAD\20_ENGINEERING_CAD_FILES\PACKAGE_7A\NY_ENVIRONMENTAL_(BROSON_CONTROL)\01_KCE\SHEET_FILES\21162_7A_C_401-406.DWG. Saved: 3/17/2023 10:07:02 AM. Plotted: 3/17/2023 10:16:51 AM. Current User: Bobby Dohit. Last Saved By: blom



IT IS A VIOLATION OF LAW FOR ANY PERSON, UNLESS THEY ARE ACTING UNDER THE DIRECTION OF A LICENSED PROFESSIONAL ENGINEER, ARCHITECT, LANDSCAPE ARCHITECT OR LAND SURVEYOR TO ALTER AN ITEM IN ANY WAY, IF AN ITEM BEARING THE STAMP OF A LICENSED PROFESSIONAL IS ALTERED. THE ALTERING ENGINEER, ARCHITECT, LANDSCAPE ARCHITECT OR LAND SURVEYOR SHALL STAMP THE DOCUMENT AND INCLUDE THE NOTATION "ALTERED BY" FOLLOWED BY THEIR SIGNATURE, THE DATE OF SUCH ALTERATION, AND A SPECIFIC DESCRIPTION OF THE ALTERATION.

ISSUED FOR PERMITTING

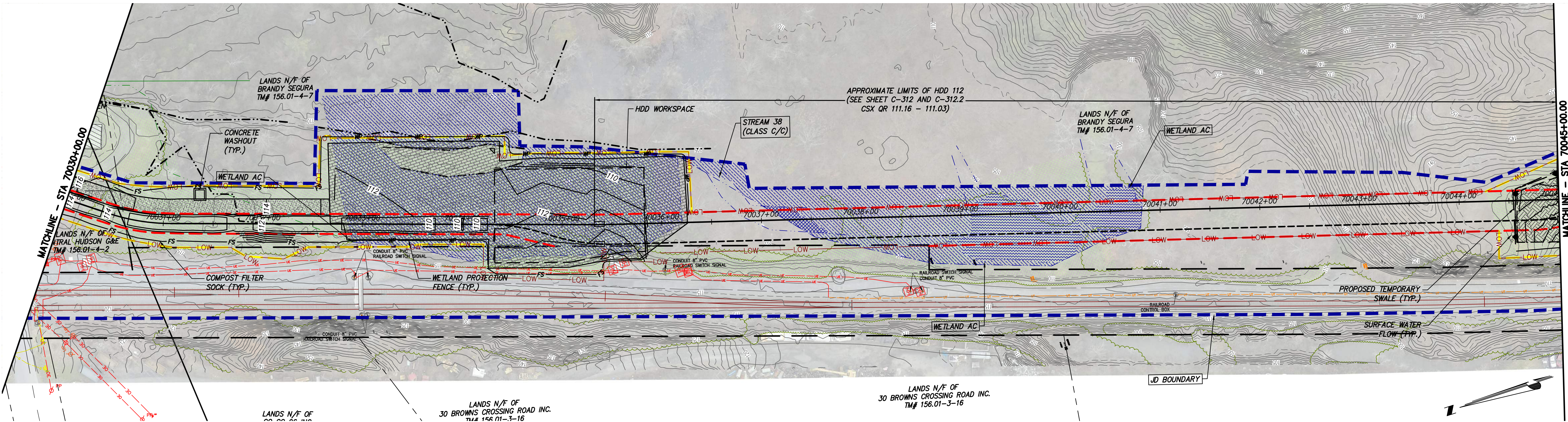
No.	DATE	SUBMITTAL / REVISION DESCRIPTION	DB	APP
F	03/17/2023	FINAL SUBMISSION	BL	JL
E	01/24/2023	DRAFT FINAL SUBMISSION	RB	JL
D	11/16/2022	PRELIMINARY DRAFT FINAL SUBMISSION	RB	JL
	04/29/2022	60% DESIGN SUBMISSION	RB	JL
B	03/22/2022	PRELIMINARY DESIGN DEVELOPMENT	BV	TK
A	02/14/2022	PRELIMINARY PROGRESS	BV	TK

CHAMPLAIN HUDSON POWER EXPRESS
SEGMENT 11 (PACKAGE 7A) - CSX: CATSKILL
EROSION AND SEDIMENT CONTROL PLAN
STA. 70015+00.00 TO STA. 70030+00.00

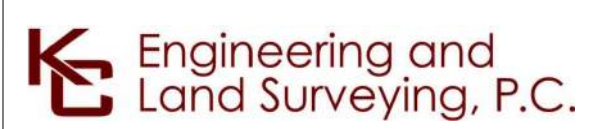
DRAWN BY: BL DESIGNED BY: SL APPROVED BY: JL SCALE AS SHOWN DATE 03/17/2023
REV. NO. F SH. NO. OF

KIEWIT PROJECT NO.	21162
KC PROJECT NO.	120174
DRAWING NO.	C-402

File: P:\120174-CHPE\CABLE_INSTALL-KEWIT\60_CAD\20_ENGINEERING_CAD_FILES\PACKAGE_7A\NY_ENVIRONMENTAL_(BROSON_CONTROL)\01_KCE\SHEET_FILES\PACKAGE_7A_C_401-406.DWG. Saved: 3/17/2023 10:07:02 AM. Plotted: 3/17/2023 10:20:03 AM. Current User: Bobby Dohit. LastSavedBy: blon



STA. 70030+00.00 TO STA. 70045+00.00 PLAN VIEW
SCALE: 1" = 50'



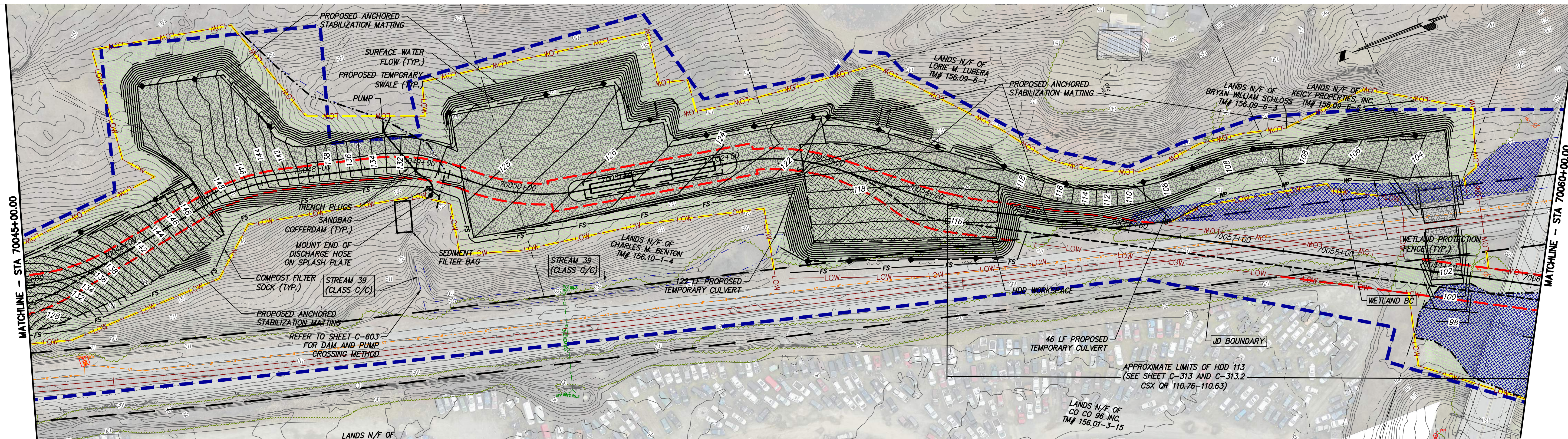
IT IS A VIOLATION OF LAW FOR ANY PERSON, UNLESS THEY ARE ACTING UNDER THE DIRECTION OF A LICENSED PROFESSIONAL ENGINEER, ARCHITECT, LANDSCAPE ARCHITECT OR LAND SURVEYOR TO ALTER AN ITEM IN ANY WAY, IF AN ITEM BEARING THE STAMP OF A LICENSED PROFESSIONAL IS ALTERED. THE ALTERING ENGINEER, ARCHITECT, LANDSCAPE ARCHITECT OR LAND SURVEYOR SHALL STAMP THE DOCUMENT AND INCLUDE THE NOTATION "ALTERED BY" FOLLOWED BY THEIR SIGNATURE, THE DATE OF SUCH ALTERATION, AND A SPECIFIC DESCRIPTION OF THE ALTERATION.

ISSUED FOR PERMITTING

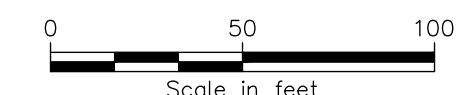
No.	DATE	SUBMITTAL / REVISION DESCRIPTION	DB	APP
F	03/17/2023	FINAL SUBMISSION	BL	JL
E	01/24/2023	DRAFT FINAL SUBMISSION	RB	JL
D	11/16/2022	PRELIMINARY DRAFT FINAL SUBMISSION	RB	JL
	04/29/2022	60% DESIGN SUBMISSION	RB	JL
B	03/22/2022	PRELIMINARY DESIGN DEVELOPMENT	BV	TK
A	02/14/2022	PRELIMINARY PROGRESS	BV	TK

CHAMPLAIN HUDSON POWER EXPRESS
 SEGMENT 11 (PACKAGE 7A) - CSX: CATSKILL
EROSION AND SEDIMENT CONTROL PLAN
 STA. 70030+00.00 TO STA. 70045+00.00

KIEWIT PROJECT NO.	21162
KC PROJECT NO.	120174
DRAWING NO.	C-403
DRAWN BY:	BL
DESIGNED BY:	SL
APPROVED BY:	JL
SCALE	AS SHOWN
REV. NO.	F
DATE	03/17/2023
SH.NO.	OF

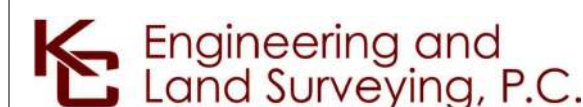


STA. 70045+00.00 TO STA. 70060+00.00 PLAN VIEW
SCALE: 1" = 50'



A

B



IT IS A VIOLATION OF LAW FOR ANY PERSON, UNLESS THEY ARE ACTING UNDER THE DIRECTION OF A LICENSED PROFESSIONAL ENGINEER, ARCHITECT, LANDSCAPE ARCHITECT OR LAND SURVEYOR TO ALTER AN ITEM IN ANY WAY, IF AN ITEM BEARING THE STAMP OF A LICENSED PROFESSIONAL IS ALTERED. THE ALTERING ENGINEER, ARCHITECT, LANDSCAPE ARCHITECT OR LAND SURVEYOR SHALL STAMP THE DOCUMENT AND INCLUDE THE NOTATION "ALTERED BY" FOLLOWED BY THEIR SIGNATURE, THE DATE OF SUCH ALTERATION, AND A SPECIFIC DESCRIPTION OF THE ALTERATION.

ISSUED FOR PERMITTING

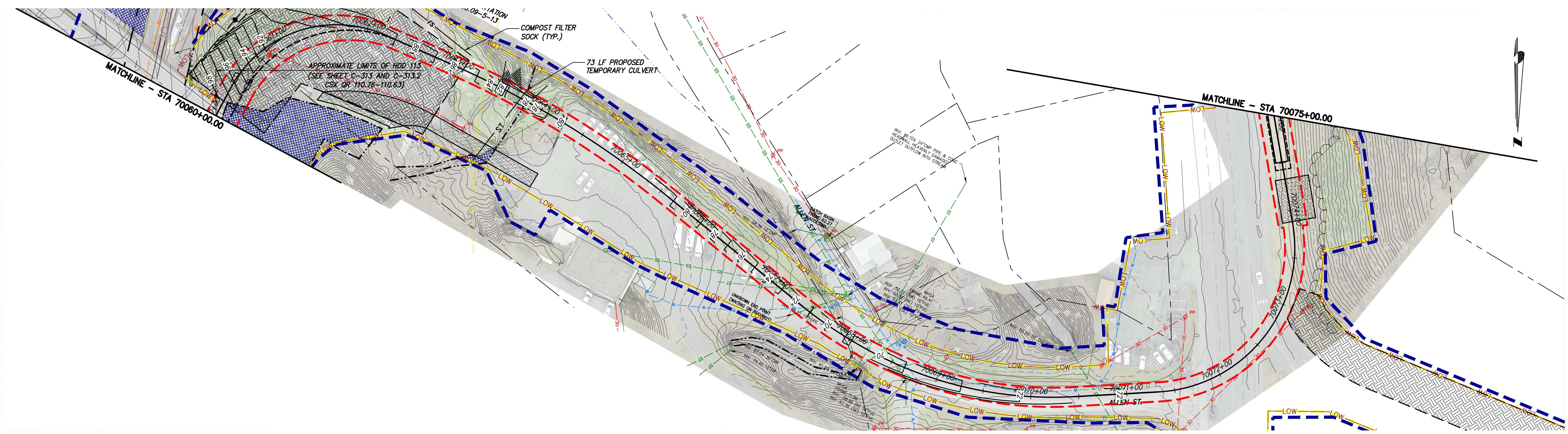
No.	DATE	SUBMITTAL / REVISION DESCRIPTION	DB	APP
F	03/17/2023	FINAL SUBMISSION	BL	JL
E	01/24/2023	DRAFT FINAL SUBMISSION	RB	JL
D	11/16/2022	PRELIMINARY DRAFT FINAL SUBMISSION	RB	JL
C	04/29/2022	60% DESIGN SUBMISSION	RB	JL
B	03/22/2022	PRELIMINARY DESIGN DEVELOPMENT	BV	TK
A	02/14/2022	PRELIMINARY PROGRESS	BV	TK

CHAMPLAIN HUDSON POWER EXPRESS
SEGMENT 11 (PACKAGE 7A) - CSX: CATSKILL
EROSION AND SEDIMENT CONTROL PLAN
STA. 70045+00.00 TO STA. 70060+00.00

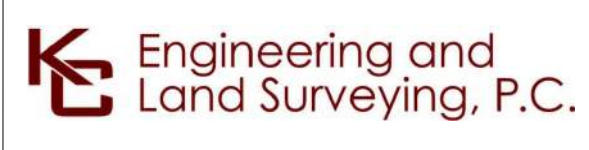
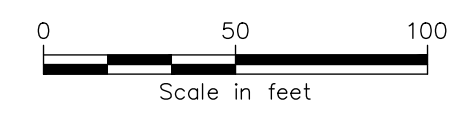
KIEWIT PROJECT NO.	21162
KC PROJECT NO.	120174
DRAWING NO.	C-404
DRAWN BY:	BL
DESIGNED BY:	SL
APPROVED BY:	JL
SCALE	AS SHOWN
REV. NO.	F
DATE	03/17/2023
SH.NO.	OF

F

File: P:\120174-CHPE-INSTALL-KEWIT\60_CAD\20_ENGINEERING_CAD_FILES\PACKAGE_7A\NY_ENVIRONMENTAL_(BROSON_CONTROL)\01_KCE\SHEET_FILES\21162_7A_C_401-406.DWG Saved: 3/17/2023 10:07:02 AM Plotted: 3/17/2023 10:26:09 AM Current User: Bobby Dohit LastSavedBy: blon



STA. 70060+00.00 TO STA. 70075+00.00 PLAN VIEW
SCALE: 1" = 50'



IT IS A VIOLATION OF LAW FOR ANY PERSON, UNLESS THEY ARE ACTING UNDER THE DIRECTION OF A LICENSED PROFESSIONAL ENGINEER, ARCHITECT, LANDSCAPE ARCHITECT OR LAND SURVEYOR TO ALTER AN ITEM IN ANY WAY, IF AN ITEM BEARING THE STAMP OF A LICENSED PROFESSIONAL IS ALTERED. THE ALTERING ENGINEER, ARCHITECT, LANDSCAPE ARCHITECT OR LAND SURVEYOR SHALL STAMP THE DOCUMENT AND INCLUDE THE NOTATION "ALTERED BY" FOLLOWED BY THEIR SIGNATURE, THE DATE OF SUCH ALTERATION, AND A SPECIFIC DESCRIPTION OF THE ALTERATION.

ISSUED FOR PERMITTING

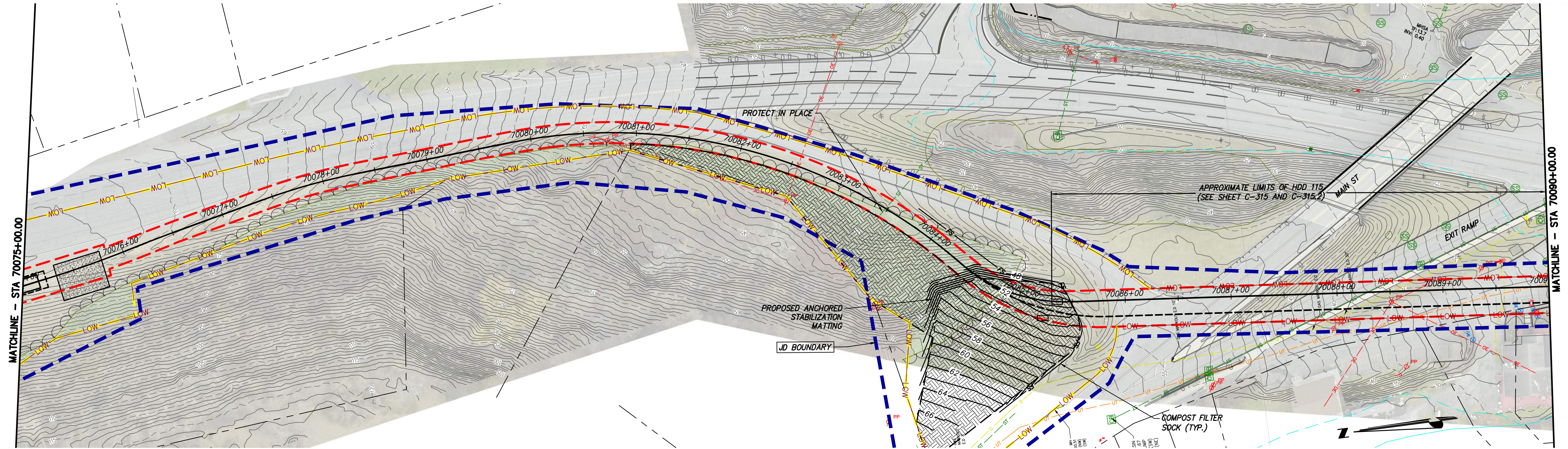
No.	DATE	SUBMITTAL / REVISION DESCRIPTION	DB	APP
F	03/17/2023	FINAL SUBMISSION	BL	JL
E	01/24/2023	DRAFT FINAL SUBMISSION	RB	JL
D	11/16/2022	PRELIMINARY DRAFT FINAL SUBMISSION	RB	JL
C	04/29/2022	60% DESIGN SUBMISSION	RB	JL
B	03/22/2022	PRELIMINARY DESIGN DEVELOPMENT	BV	TK
A	02/14/2022	PRELIMINARY PROGRESS	BV	TK

CHAMPLAIN HUDSON POWER EXPRESS
SEGMENT 11 (PACKAGE 7A) - CSX: CATSKILL
EROSION AND SEDIMENT CONTROL PLAN
STA. 70060+00.00 TO STA. 70075+00.00

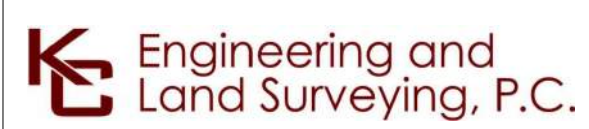
KIEWIT PROJECT NO.	21162
KC PROJECT NO.	120174
DRAWING NO.	C-405

DRAWN BY:	BL	DESIGNED BY:	SL	APPROVED BY:	JL	SCALE	AS SHOWN	DATE	03/17/2023
REV. NO.	F	SH. NO.	11	OF	11				

File: P:\120174-CHPE\CABLE_INSTALL\KIEWIT\60_CAD\CAD\20_ENGINEERING_CAD_FILES\PACKAGE_7A\NY_ENVIRONMENTAL_(BROSON_CONTROL)\01_KCE\SHEET_FILES\21162_7A_C_401-405.DWG. Saved: 3/17/2023 10:07:02 AM. Plotted: 3/17/2023 10:29:06 AM. Current User: Bobby Dohit. LastSavedBy: blon



STA. 70075+00.00 TO STA. 70090+00.00 PLAN VIEW
SCALE: 1" = 50'



IT IS A VIOLATION OF LAW FOR ANY PERSON, UNLESS THEY ARE ACTING UNDER THE DIRECTION OF A LICENSED PROFESSIONAL ENGINEER, ARCHITECT, LANDSCAPE ARCHITECT OR LAND SURVEYOR TO ALTER AN ITEM IN ANY WAY. IF AN ITEM BEARING THE STAMP OF A LICENSED PROFESSIONAL IS ALTERED, THE ALTERING ENGINEER, ARCHITECT, LANDSCAPE ARCHITECT OR LAND SURVEYOR SHALL STAMP THE DOCUMENT AND INCLUDE THE NOTATION "ALTERED BY" FOLLOWED BY THEIR SIGNATURE, THE DATE OF SUCH ALTERATION, AND A SPECIFIC DESCRIPTION OF THE ALTERATION.

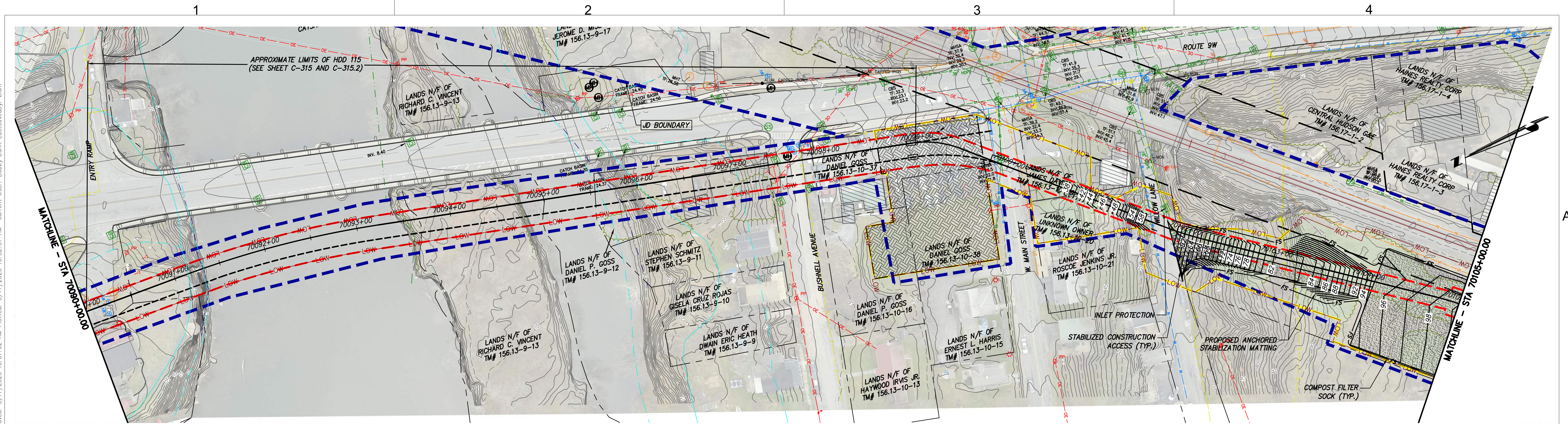
ISSUED FOR PERMITTING

No.	DATE	SUBMITTAL / REVISION DESCRIPTION	DB	APP
F	03/17/2023	FINAL SUBMISSION	BL	JL
E	01/24/2023	DRAFT FINAL SUBMISSION	RB	JL
D	11/16/2022	PRELIMINARY DRAFT FINAL SUBMISSION	RB	JL
C	04/29/2022	60% DESIGN SUBMISSION	RB	JL
B	03/22/2022	PRELIMINARY DESIGN DEVELOPMENT	BV	TK
A	02/14/2022	PRELIMINARY PROGRESS	BV	TK

CHAMPLAIN HUDSON POWER EXPRESS
SEGMENT 11 (PACKAGE 7A) - CSX: CATSKILL
EROSION AND SEDIMENT CONTROL PLAN
STA. 70075+00.00 TO STA. 70090+00.00

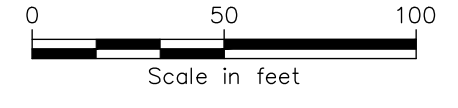
DRAWN BY: BL DESIGNED BY: SL APPROVED BY: JL SCALE AS SHOWN DATE 03/17/2023
REV. NO. F SH. NO. OF

KIEWIT PROJECT NO.	21162
KC PROJECT NO.	120174
DRAWING NO.	C-405.1

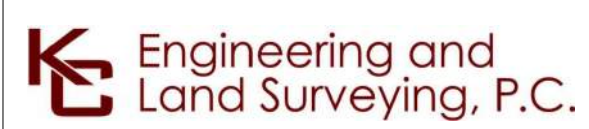
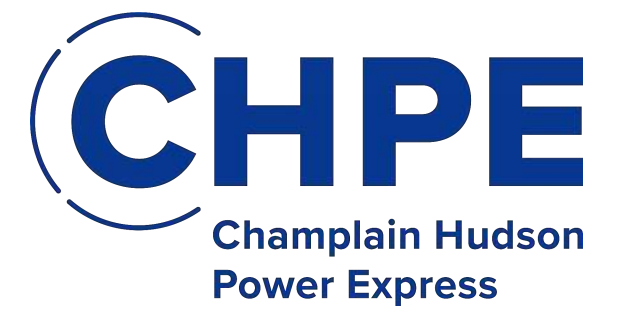


STA. 70090+00.00 TO STA. 70105+00.00 PLAN VIEW

SCALE: 1" = 50'



File: P:\120174-CHPE\CABLE_INSTALL\KIEWIT\60_CAD\20_ENGINEERING_CAD_FILES\PACKAGE_7A\NY_ENVIRONMENTAL_(BROSON_CONTROL)\01_KCE\SHEET_FILES\21162_7A_C_401-406.DWG. Saved: 3/17/2023 10:07:02 AM. Plotted: 3/17/2023 10:32:37 AM. Current User: Bobby Dohit. LastSavedBy: blom



IT IS A VIOLATION OF LAW FOR ANY PERSON, UNLESS THEY ARE ACTING UNDER THE DIRECTION OF A LICENSED PROFESSIONAL ENGINEER, ARCHITECT, LANDSCAPE ARCHITECT OR LAND SURVEYOR TO ALTER AN ITEM IN ANY WAY, IF AN ITEM BEARING THE STAMP OF A LICENSED PROFESSIONAL IS ALTERED. THE ALTERING ENGINEER, ARCHITECT, LANDSCAPE ARCHITECT OR LAND SURVEYOR SHALL STAMP THE DOCUMENT AND INCLUDE THE NOTATION "ALTERED BY" FOLLOWED BY THEIR SIGNATURE, THE DATE OF SUCH ALTERATION, AND A SPECIFIC DESCRIPTION OF THE ALTERATION.

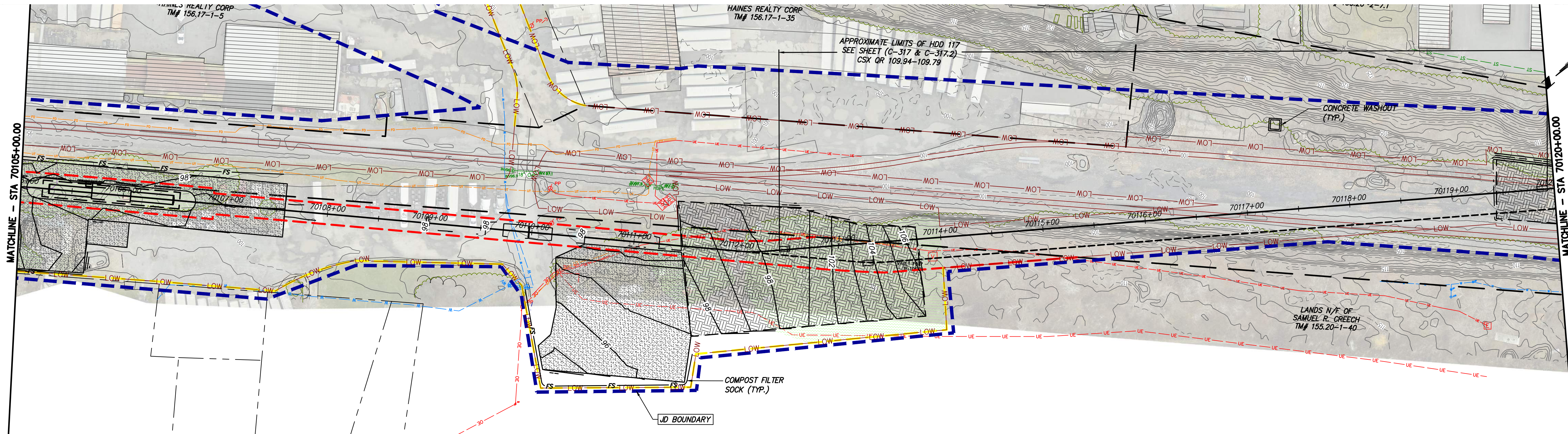
ISSUED FOR PERMITTING

No.	DATE	SUBMITTAL / REVISION DESCRIPTION	DB	APP
F	03/17/2023	FINAL SUBMISSION	BL	JL
E	01/24/2023	DRAFT FINAL SUBMISSION	RB	JL
D	11/16/2022	PRELIMINARY DRAFT FINAL SUBMISSION	RB	JL
C	04/29/2022	60% DESIGN SUBMISSION	RB	JL
B	03/22/2022	PRELIMINARY DESIGN DEVELOPMENT	BV	TK
A	02/14/2022	PRELIMINARY PROGRESS	BV	TK

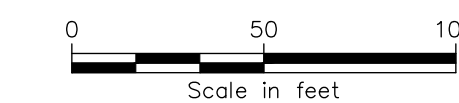
CHAMPLAIN HUDSON POWER EXPRESS
 SEGMENT 11 (PACKAGE 7A) - CSX: CATSKILL
 EROSION AND SEDIMENT CONTROL PLAN
 STA. 70090+00.00 TO STA. 70105+00.00

DRAWN BY: BL DESIGNED BY: SL APPROVED BY: JL SCALE AS SHOWN DATE 03/17/2023
 REV. NO. F SH. NO. OF

KIEWIT PROJECT NO.	21162
KC PROJECT NO.	120174
DRAWING NO.	C-406

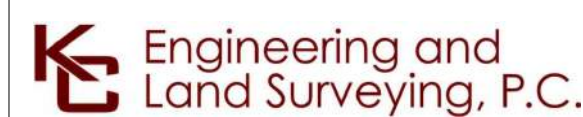


STA. 70105+00.00 TO STA. 70120+00.00 PLAN VIEW
SCALE: 1" = 50'



A

B



IT IS A VIOLATION OF LAW FOR ANY PERSON, UNLESS THEY ARE ACTING UNDER THE DIRECTION OF A LICENSED PROFESSIONAL ENGINEER, ARCHITECT, LANDSCAPE ARCHITECT OR LAND SURVEYOR TO ALTER AN ITEM IN ANY WAY, IF AN ITEM BEARING THE STAMP OF A LICENSED PROFESSIONAL IS ALTERED. THE ALTERING ENGINEER, ARCHITECT, LANDSCAPE ARCHITECT OR LAND SURVEYOR SHALL STAMP THE DOCUMENT AND INCLUDE THE NOTATION "ALTERED BY" FOLLOWED BY THEIR SIGNATURE, THE DATE OF SUCH ALTERATION, AND A SPECIFIC DESCRIPTION OF THE ALTERATION.

ISSUED FOR PERMITTING

No.	DATE	SUBMITTAL / REVISION DESCRIPTION	DB	APP
F	03/17/2023	FINAL SUBMISSION	BL	JL
E	01/24/2023	DRAFT FINAL SUBMISSION	RB	JL
D	11/16/2022	PRELIMINARY DRAFT FINAL SUBMISSION	RB	JL
C	04/29/2022	60% DESIGN SUBMISSION	RB	JL
B	03/22/2022	PRELIMINARY DESIGN DEVELOPMENT	BV	TK
A	02/14/2022	PRELIMINARY PROGRESS	BV	TK

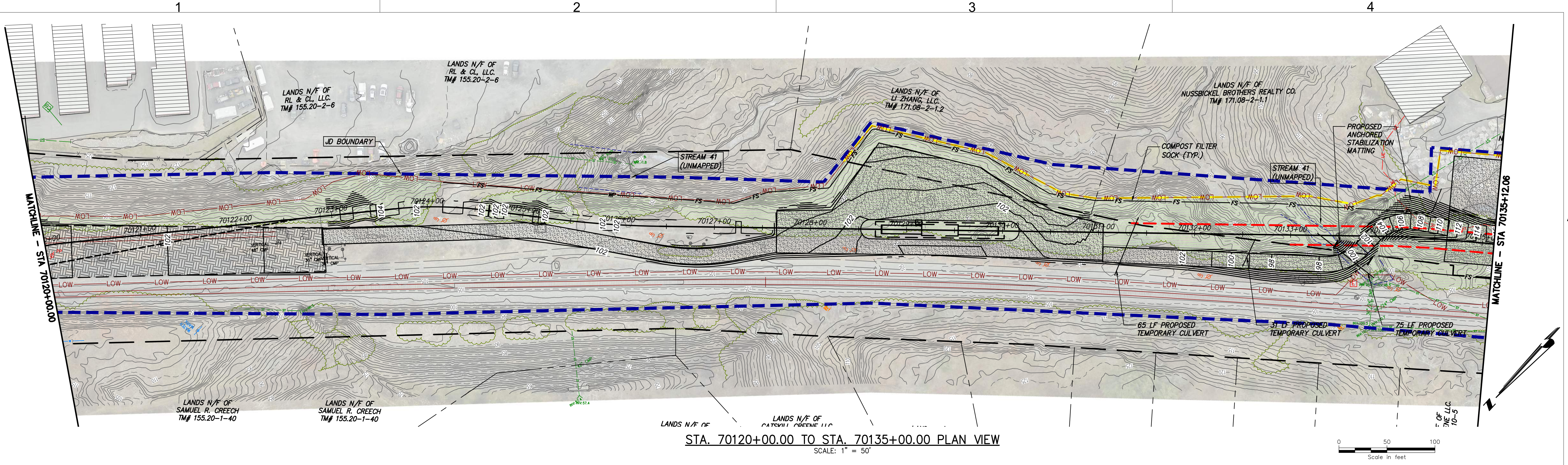
CHAMPLAIN HUDSON POWER EXPRESS
SEGMENT 11 (PACKAGE 7A) - CSX: CATSKILL
EROSION AND SEDIMENT CONTROL PLAN
STA. 70105+00.00 TO STA. 70120+00.00

KIEWIT PROJECT NO.	21162
KC PROJECT NO.	120174
DRAWING NO.	C-407
DATE	03/17/2023
OF	

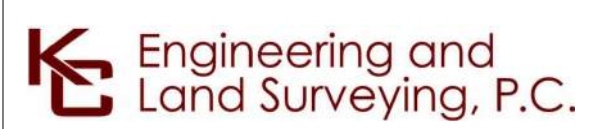
DRAWN BY: BL DESIGNED BY: SL APPROVED BY: JL SCALE AS SHOWN DATE 03/17/2023
REV. NO. F SH. NO. OF

File: P:\120174-CHPE-INSTALL-KEWIT\60_CAD\CAD\20_ENGINEERING_CAD_FILES\PACKAGE_7A\NY_ENVIRONMENTAL_(BROSON_CONTROL)\01_KCE\SHEET_FILES\21162_7A_C_401-408.DWG Saved: 3/17/2023 10:07:02 AM Plotted: 3/17/2023 10:38:18 AM Current User: Bobby Dohi LastSavedBy: blom

File: P:\21074-CHPE-CABLE-INSTALL-KEWIT\60_CAD\20_ENGINEERING_CAD_FILES\PACKAGE_7A\NY_ENVIRONMENTAL_(BROSON_CONTROL)\01_KCE\SHEET_FILES\21162_7A_C_401-408.DWG. Saved: 3/17/2023 10:07:02 AM. Plotted: 3/17/2023 10:39:53 AM. Current User: Bobby Dohit. LastSavedBy: blon



STA. 70120+00.00 TO STA. 70135+00.00 PLAN VIEW
SCALE: 1" = 50'



IT IS A VIOLATION OF LAW FOR ANY PERSON, UNLESS THEY ARE ACTING UNDER THE DIRECTION OF A LICENSED PROFESSIONAL ENGINEER, ARCHITECT, LANDSCAPE ARCHITECT OR LAND SURVEYOR TO ALTER AN ITEM IN ANY WAY, IF AN ITEM BEARING THE STAMP OF A LICENSED PROFESSIONAL IS ALTERED. THE ALTERING ENGINEER, ARCHITECT, LANDSCAPE ARCHITECT OR LAND SURVEYOR SHALL STAMP THE DOCUMENT AND INCLUDE THE NOTATION "ALTERED BY" FOLLOWED BY THEIR SIGNATURE, THE DATE OF SUCH ALTERATION, AND A SPECIFIC DESCRIPTION OF THE ALTERATION.

ISSUED FOR PERMITTING

No.	DATE	SUBMITTAL / REVISION DESCRIPTION	DB	APP
F	03/17/2023	FINAL SUBMISSION	BL	JL
E	01/24/2023	DRAFT FINAL SUBMISSION	RB	JL
D	11/16/2022	PRELIMINARY DRAFT FINAL SUBMISSION	RB	JL
C	04/29/2022	60% DESIGN SUBMISSION	RB	JL
B	03/22/2022	PRELIMINARY DESIGN DEVELOPMENT	BV	TK
A	02/14/2022	PRELIMINARY PROGRESS	BV	TK

CHAMPLAIN HUDSON POWER EXPRESS
 SEGMENT 11 (PACKAGE 7A) - CSX: CATSKILL
 EROSION AND SEDIMENT CONTROL PLAN
 STA. 70120+00.00 TO STA. 70135+00.00

DRAWN BY: BL DESIGNED BY: SL APPROVED BY: JL SCALE AS SHOWN DATE 03/17/2023
 REV. NO. F SH. NO. OF

KIEWIT PROJECT NO.	21162
KC PROJECT NO.	120174
DRAWING NO.	C-407.1