



Appendix F: PIP & Complaint Resolution Plan

CHAMPLAIN HUDSON POWER EXPRESS (CHPE)



SEGMENT 18A

LAKE CHAMPLAIN PRE-LAY MATTRESSING

March 22, 2023

REVISION HISTORY

Revision No.	Doc Section	Rev. Date	Rev. Description
01	All Text	03/24/22	Complete Draft
02	All Text	04/04/22	Review Comments Update
03	All Text	04/05/22	Finalizing Draft
04	All Text	06/09/22	DPS Comments Update
05	All Text	06/15/22	Review Comments Update
06	1	08/08/22	Review Comments Update
07	3	08/15/22	Review Comments Update
08	2.3	09/15/22	Revised Construction Dates
09	All Text	11/22/22	Review Comments Update
10	All Text	03/23/23	Review Comments Update

TABLE OF CONTENTS

1	Project Overview	5
1.1	Impacted Municipalities:	5
2	Public Involvement Plan Overview:	8
2.1	Public Involvement Goals:	8
2.2	Public Involvement Team:	9
2.3	Community Outreach Stages and Schedule:	9
3	Public Involvement Outreach:	13
3.1	Notices and Public Inquiries:	13
3.1.1	Toll-Free Phone Number	14
3.1.2	Project Email Address	14
3.1.3	Website	14
3.1.4	Points of Contact	14
3.1.5	Test Message Alerts	15
3.1.6	Website Materials:	15
3.1.7	Informational Pamphlets and Factsheets:	16
3.1.8	Doorhangers:	16
3.1.9	Contact Cards:	16
3.1.10	Signage:	16
3.1.11	Variable Message Boards:	16
3.1.12	Social Media:	17
4	Media:	17
4.1	Media Opportunity Availability:	17
5	Open House Public Meetings:	17
5.1	Meeting Coordination:	18
5.2	Meeting Materials:	18
6	Complaint Resolution and Reporting:	18

Figures

<u>Figure 1</u>	<u>CHPE Project Route Map</u>	6
<u>Figure 2</u>	<u>New York City: Astoria Annex</u>	7

Attachment

<u>ATTACHMENT 1</u>	<u>Public Outreach and Complaint Resolution Plan Segment 18a</u>	1
---------------------	--	---

1 Project Overview

The Champlain Hudson Power Express (CHPE) is a renewable energy transmission project that will deliver clean power to the New York City metropolitan area. The energy brought to New York consumers through this project will be hydropower produced by Hydro-Québec in the Canadian Province of Québec utilizing natural water flows to generate electricity. The project will play a key role in New York's energy transformation by lowering greenhouse gas emissions while creating jobs and generating billions of dollars in new investments. CHPE will span nearly 339 miles from the U.S.-Canadian border to the heart of New York City (detailed in Figures 1 and 2). The project will deliver enough power for more than one million New York homes and supply power to Quebec sections. CHPE will also provide significant economic benefits to The Empire State, including an estimated \$1.7 billion in tax revenue for local municipalities.

CHPE will construct the high voltage direct current (HVDC) transmission line (two 400kV cables with a fiber optic cable) in both marine (192 miles or 56.6% of total alignment) and overland (147 miles, 43.4%) environments, with approximately three-quarters of the overland alignment within railroad (CP, CSX, and PA) right-of-way (ROW) and the balance of the overland miles (24.5%) in NYSDOT, Thruway Authority, local road ROWs, recreational sites, and private lands. CHPE will place the HVDC transmission line underground in both the marine and overland alignments. In addition to the transmission line, CHPE will construct an HVDC Converter Station in Astoria, Queens, and a high voltage alternating current (HVAC) system including a 0.3-mile overhead line, modification of the Astoria Annex Substation, and a nearly 3.5 mile (two 345kV cables) from the Astoria Annex to the Rainey Substation, a.k.a. the Astoria-Rainey Cable (ARC). CHPE will construct the Converter Station and HVAC system on the Astoria Annex and underground city streets in Queens.

1.1 Impacted Municipalities:

- **Washington County:** Town of Putnam, Town of Dresden, Town of Whitehall, Village of Whitehall, Town of Fort Ann, Village of Fort Ann, Town of Kingsbury, and Village of Fort Edward.
- **Saratoga County:** Town of Moreau, Town of Northumberland, Town of Wilton, Town of Greenfield, City of Saratoga Springs, Town of Milton, Town of Ballston, and Town of Clifton Park.
- **Schenectady County:** Town of Glenville, Village of Scotia, and Town of Rotterdam.
- **Albany County:** Town of Guilderland, Village of Voorheesville, Town of New Scotland, and Town of Coeymans.
- **Greene County:** Town of New Baltimore, Town of Coxsackie, Village of Coxsackie, Town of Catskill, and Village of Catskill.
- **Rockland County:** Town of Stony Point, Village of Haverstraw, Village of West Haverstraw, Town of Haverstraw, and Town of Clarkstown.

- **Bronx County:** Bronx
- **New York County:** Manhattan
- **Queens County:** Queens

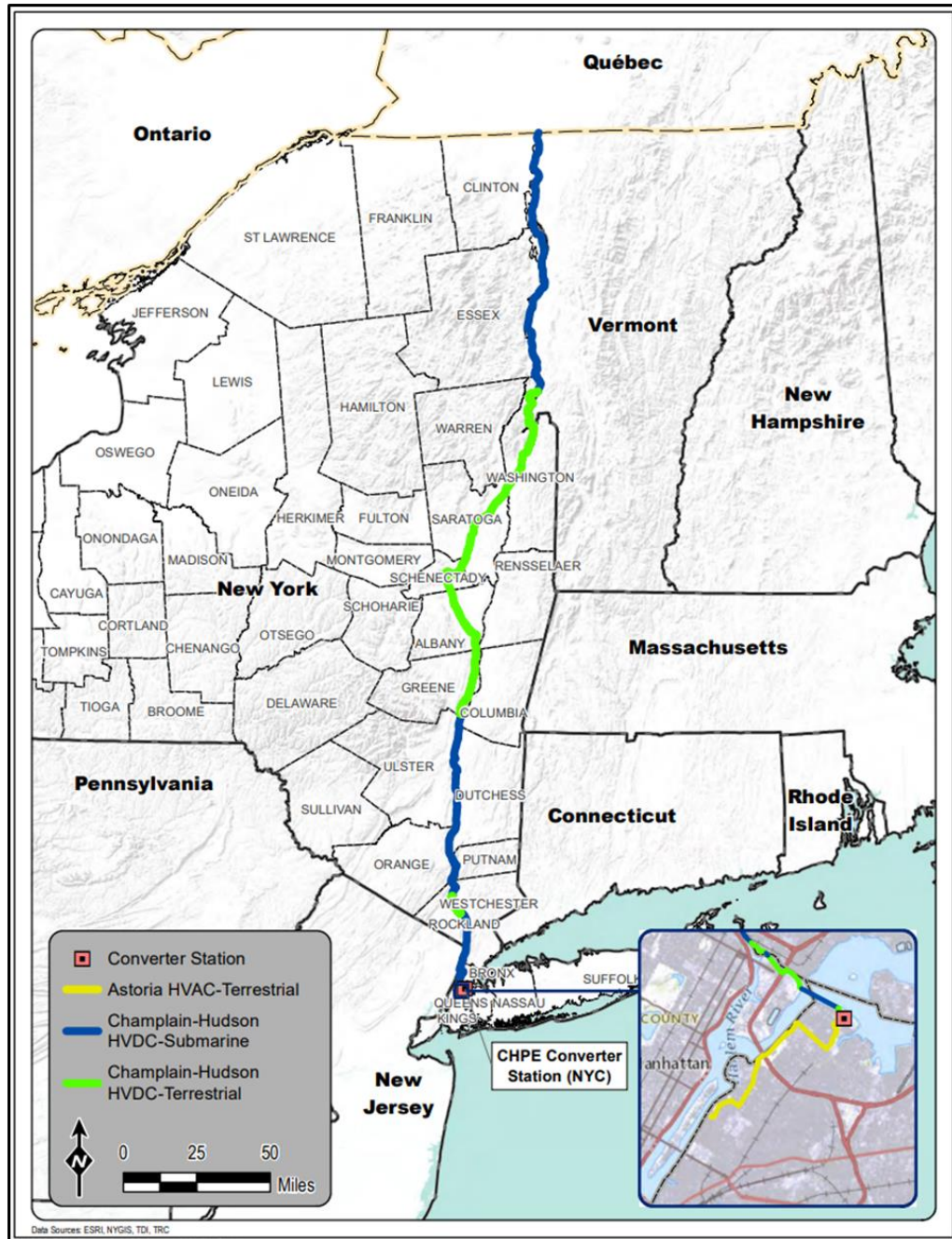


Figure 1 CHPE Project Route Map.



Figure 2 New York City: Astoria Annex.

2 Public Involvement Plan Overview:

The Public Involvement Plan (PIP) is a living document and serves as a proposed set of actions, strategies, methodologies, and overarching timeline to guide the outreach process throughout construction and post-construction site restoration. CHPE will update the PIP throughout the project entering commercial operation.

CHPE has developed The Public Involvement Plan to encourage public awareness and understanding of the CHPE project. The overall goal of the PIP is to promote two-way communication between the project and residents, public officials, and business owners in each affected community.

The PIP provides an overall framework for conducting a comprehensive and effective information exchange throughout the project. However, the framework is also flexible, scalable, and customizable, to meet the specific communication needs most effectively of each affected community. The PIP can also be modified based on suggestions from community members and officials.

CHPE has included specific public outreach activities and affected stakeholders for this segment, as well as a public meeting and notification information Attachment 1 at the end of this document.

2.1 Public Involvement Goals:

The goals of the construction-phase outreach program will be to:

- Communicate information, proposed schedules, and other matters to the public and stakeholders regarding Environmental Management and Construction Plans (EM&CPs) submitted for each segment and upcoming construction activities during the construction phase.
- Keep residents and officials in affected communities, local stakeholders, and interest groups; and the news media informed promptly of significant project activities.
- Provide a method for stakeholders to inquire and raise concerns with the project team.
- Work to create and maintain, through an active Public Involvement plan, a climate of understanding and trust aimed at providing information and responding to concerns promptly.
- Comply with Article VII public outreach requirements.

The term "stakeholders" includes a broad range of individuals and organizations, including agencies and community groups with specific interests in renewable energy, including elected and appointed officials, business owners, commercial entities, emergency responders, schools, transit companies, landowners (host and abutting), and others located within or having interests within the Project Area. This term also applies to the general public in the Project Area.

2.2 Public Involvement Team:

The Public Involvement Plan will complement previous and ongoing outreach efforts by the Certificate Holder, CHPE LLC. WSP will support CHPE's Outreach and include several project partners. WSP is one of the world's leading engineering, environmental, and professional services firms comprised of engineers, planners, technical experts, construction managers, and communications and public involvement professionals. A clear division of roles and responsibilities will maximize CHPE's Outreach team communication efforts and provide consistency of messages and approach. The following highlights the delineation of primary responsibilities:

- Public Outreach Program Oversight, Public Relations & Media Engagement - CHPE LLC
- Public Outreach Program – WSP, with support from CHPE LLC
- Public Relations & Media Engagement along with oversight of Public Outreach Program – CHPE LLC
- Public Relations/Tech Support – Mower
- Press & Media Engagement – Risa Heller
- Regulatory Compliance – Young/Sommer LLC

2.3 Community Outreach Stages and Schedule:

Outreach for the CHPE project will be ongoing and be adjusted depending on the stage of the project, the geographic segment, and the construction method. This project has been broken into multiple segments and will include overland and marine construction. See segments in Figure 3. CHPE has proposed the following outreach actions and strategies.

Lake Champlain

Construction Expected: April 2023 – July 2024

Outreach Anticipated: Q1 2023 – Q4 2024

Before the start of construction, CHPE will conduct Outreach at recreation centers, marinas, parks/visitors' centers, and ferry terminals. CHPE will post flyers and signage to notify recreators of potential access restrictions. CHPE will send official notice of construction to mariners, local officials, host/abutting property owners in the area, and relevant state and federal regulators. Although construction is on the New York side of Lake Champlain, Outreach may also be conducted on the Vermont side since construction will likely be visible from both shorelines at times and construction may impact access to Vermont recreators.

Outreach Tactics: Meetings with all key elected officials and other stakeholders (as guided by elected officials), direct mail, flyers, text messaging, and signage. Tactics are described in more detail in section 3.

Sequence of Outreach:

Pre-construction: Outreach to property owners and affected stakeholders; virtual meetings with local officials; Any required notifications sent according to regulations as outlined in Section 3.1.

Construction – Continued communication with the community through outreach tactics as construction progresses

Capital Region (Putnam Station to Catskill)

Construction Expected: November 2022 – August 2025

Outreach Anticipated: Q4 2022 – Q4 2025

Overland construction is primarily within railroad right of way in this corridor and traverses various rural, residential, and industrial areas. Overland construction has the potential to impact roadways as deliveries and equipment may need traffic control, which could impede the normal flow of traffic.

Outreach Tactics: Meetings with key elected officials and stakeholders identified through meetings, direct mail, flyers, text messaging, door hangers, variable message boards, and public meetings. Tactics are described in more detail in section 3.

Sequence of Outreach

Pre-construction – Individual Outreach to host property owners and meetings with local officials.

Two weeks before site preparation – Official notice to local officials and host/abutting property owners.

Construction – Kick-off open house public meeting; continued communication with the community through outreach tactics as construction progresses.

Upper Hudson River (Catskill to Stony Point)

Construction Expected: April 2023 – August 2025

Outreach Anticipated: Q1 2023 – Q4 2025

This project's Upper Hudson marine portion has many marinas, docks, parks, recreational sites, and businesses along the river.

Outreach Tactics: Direct mail, flyers, text messaging, signage. Tactics described in more detail in section 3

Sequence of Outreach:

Pre-construction – Individual Outreach to host property owners and meetings with local officials.

Two weeks before site preparation – Official notice to mariners, local officials, and host/abutting property owners.

Construction – Continued communication with the community through outreach tactics as construction progresses.

Rockland County (Stony Point to Clarkstown)

Construction Expected: May 2023 – August 2025

Outreach Anticipated: Q1 2023 – Q4 2025

As population density increases, the closer the project is to New York City, it will be essential to leverage relationships with local governments and community organizations to disseminate project messaging and updates. Overland construction in Rockland County will likely affect local traffic and access to businesses and residences. In addition to notifying individual businesses and homes, communication channels through local government and business or neighborhood organizations will help relay project notifications and construction impacts, reaching a larger audience. The project will coordinate step-by-step with those stakeholders that have previously been involved in project development.

Outreach Tactics: Direct mail, flyers, text messaging, variable message boards, public meetings. Tactics are described in more detail in section 3.

Sequence of Outreach:

Pre-construction – Individual Outreach to host property owners and virtual meetings with local officials.

Two weeks before site preparation – Official notice to local officials and host/abutting property owners.

Construction – Kick-off open house public meeting; continued communication with the community through outreach tactics as construction progresses.

Lower Hudson River and Harlem River (Clarkstown to New York City)

Construction Expected: April 2023 – August 2025

Outreach Anticipated: Q1 2023 – Q4 2025

Communications to local marinas, parks, piers, businesses, and environmental groups will continue to play an essential role in the project's success as submarine construction begins in the Lower Hudson River.

Outreach Tactics: Direct mail, flyers, text messaging, signage. Tactics are described in more detail in section 3.

Sequence of Outreach:

Pre-construction – Individual Outreach to host property owners and meetings with local officials.

Two weeks before site preparation – Official notice to mariners, local officials, and host/abutting property owners.

Construction – Continued communication with the community through outreach tactics as construction progresses.

New York City (Randall's Island and Queens)

Construction Expected:

Harlem River – May 2023 – July 2025

Randall's Island – June 2023 – November 2024

Queens – TBD

Overland construction on Randall's Island will require close coordination with Randall's Island Park Alliance and the New York City Department of Parks and Recreation. Communicating through their channels will be beneficial to provide construction updates and impacts to a broad audience.

Coordination and communication with businesses, docks, and marinas along the Harlem and East Rivers are crucial in a dense area. Understanding the access needs of the businesses and waterways will help mitigate potential issues due to access constraints.

Overland construction in Astoria will require direct mailers, signage, and flyers to notify businesses, residents, and passersby of upcoming construction impacts.

Outreach Tactics: Direct mail, flyers, text messaging, signage, social media, public meetings, variable message boards. Tactics are described in more detail in section 3.

Sequence of Outreach:

Pre-construction – Individual Outreach to host property owners and meetings with local officials.

Two weeks before site preparation – Official notice to local officials and host/abutting property owners.

Construction – Kick-off open house public meeting; continued communication with the community through outreach tactics as construction progresses.

3 Public Involvement Outreach:

Throughout the project design and construction project, the Certificate Holders' Outreach team will create informational materials to be disseminated to the public during public meetings and events and as needed. Materials produced by the Certificate Holders' Outreach team will include materials for the existing project website www.chpexpress.com and project factsheets, project plans, and other materials deemed necessary by the project team with the Certificate Holders' approval. In addition, communication with affected communities will continue throughout construction as work progresses.

CHPE will translate materials into the most prevalently spoken languages in the community and additional languages as needed and upon request. In addition, virtual and in-person meetings have been held with officials to introduce the project, discuss the route through affected communities, answer questions and establish ongoing communication between municipalities and the project.

A total of nine virtual meetings have been held, with 59 local officials participating.

3.1 Notices and Public Inquiries:

Before beginning construction within a segment, CHPE will mail notifications to the following groups at least two weeks before the beginning of site preparation for construction:

- Local emergency personnel and local officials in the area where construction will occur
- Owners and occupants of properties within 100 feet of construction
- Public and private utilities within the construction area

In addition to mailed notifications to property owners, local officials, and emergency personnel listed in Attachment 1, notices will be posted in local media and displayed in public places also listed in Attachment 1. (Post offices, community centers, libraries, and bulletin boards) no less than two weeks before the beginning of site preparation. If site work is delayed significantly, CHPE will provide additional notice to the public before site work resumes. Notification materials will include a map of the construction zone, an anticipated date for the start of

construction, a statement that the Facility is under the jurisdiction of the Public Service Commission and which residents and stakeholders can contact directly, and the following information for stakeholders to inquire or express a concern about the project:

3.1.1 Toll-Free Phone Number

To provide the public and interested stakeholders with a direct line to the project, the Certificate Holders' Outreach team established a 1-800 number that will record calls and alert team members when that they have received a concern or comment. The established number for the project is 1-800-991-CHPE (2473).

CHPE will respond to messages received through the toll-free project number will be responded to within two business days. The voicemail box message acknowledges receipt of the message.

3.1.2 Project Email Address

To address comments and concerns from the public, the Certificate Holders' Outreach team has arranged for a project email address. The email account will receive public input and be accessible by members of the Public Involvement Team. The established project email address is publicoutreach@chpexpress.com. CHPE will respond to inquiries, comments, or concerns sent to the Project Email Address will be responded to within two business days. An automated reply acknowledges receipt of the message.

3.1.3 Website

CHPE will establish a comment form on the project website. CHPE will direct comments, concerns, and general feedback submitted through the website form to the project email account listed above, which will be checked regularly by the Public Outreach Team. The project webpage is <https://chpexpress.com/>

The website will include a form for visitors to sign up for email, text and USPS mail updates and alerts regarding the project.

CHPE will respond to inquiries, comments, or concerns forwarded to Project Email Address from the website comment form within two business days.

3.1.4 Points of Contact

CHPE has appointed Molly Hollister as the primary point of contact for the Project.

CHPE: Molly Hollister

WSP USA, One Pennsylvania Plaza, New York, New York 10119

Phone: 800-991-CHPE (2473)

Email: publicoutreach@chpexpress.com

DPS: Michelle L. Phillips, Secretary to the Commission, New York Department of Public Service

Phone: 518-474-4520

Email: secretary@dps.ny.gov

DPS: Matthew Smith

Office of Electric, Gas and Water, New York State Department of Public Service,
Three Empire State Plaza, Albany, NY 12223

Phone: (518)474-8702

Email: Matthew.Smith@dps.ny.gov.

Molly Hollister is the point of contact overseeing the Certificate Holders' Outreach team members assigned to check the toll-free phone number and project email address daily. WSP will be responsible for confirming receipt of the inquiry within two business days, routing it to the appropriate project team member for a response, following up on a resolution, and logging the communication in the stakeholder database.

CHPE will log communications with stakeholders in a database. The database will include any inquiries or comments received via the toll-free number, project email, or website and the project team's response and outgoing communication efforts, like construction notices. For complaints, CHPE will maintain a log that lists at least the date of any complaint, identity and contact information for the complaining party, the date of the Certificate Holders' response, and a description of the outcome. Call logs will be maintained and reported to the DPS in accordance with the Article VIII Certificate.

3.1.5 Test Message Alerts

CHPE will coordinate with NYS DOT and NY511.gov to provide to allow the public to sign up for text message notifications of construction activities in their region.

3.1.6 Website Materials:

To aid in public awareness of the CHPE project, the Certificate Holders' Outreach team will collaborate with the larger project team to develop relevant materials to keep the public and identified stakeholders apprised of project activities, both past, and future. The website includes maps of the project area, construction schedule, and complaint resolution procedures.

Materials produced by the Certificate Holders' Outreach team will not be limited to informational materials.

3.1.7 Informational Pamphlets and Factsheets:

The Certificate Holders' Outreach team will develop informational material throughout construction. A project factsheet has been created that explains the entire project and its impacts and benefits at the local level. It also includes project contact information, as well as how to file a complaint or concern with the Department of Public Service, and Frequently Asked Questions from the public about how construction will proceed. In addition, CHPE will deliver informational materials to points of interest along the corridor, including libraries and other community centers. Materials will be available in multiple languages based on the most frequently used languages in the host community. All materials will be posted on the CHPE website.

CHPE will develop flyers to notify the public of upcoming construction. Based on the needs of specific project segments and communities within the segment, these flyers will be distributed to local marinas, bait and tackle shops, recreation facilities, libraries, post offices, community bulletin boards, and other public facilities to provide notice of construction. Flyers will include CHPE contact information as well as how to file a complaint or concern with the Department of Public Service.

3.1.8 Doorhangers:

CHPE will develop door hangers for use in the field if contact needs to be made with a resident or business that other methods cannot reach. The Outreach Team can attach notification materials and a written note on the door hanger. Doorhangers will include applicable contact information.

3.1.9 Contact Cards:

Contact cards, the business card size, will be developed and printed for use in the field. The contact cards will include:

- The toll-free number,
- Project email address, and
- Website for field personnel to distribute to the public if inquiries or concerns arise.

All inquiries and concerns need to be routed to the Certificate Holders' Outreach team to be responded to and cataloged in accordance with Article VII.

3.1.10 Signage:

CHPS will develop and print yard signs with applicable contact information and place them at construction sites. These signs will provide additional notice to the public and allow contact information to be easily accessed should questions or concerns arise.

3.1.11 Variable Message Boards:

As necessary, the Certificate Holders' Outreach team will work with the construction team to post variable message boards in advance of traffic impacts and in areas where ingress/egress may be affected.

3.1.12 Social Media:

CHPE will use social media to increase awareness, promote the project, and provide construction updates and notifications. The Certificate Holders' Outreach team will have accounts and develop content for use on social media channels like Facebook, Instagram, and Twitter. In addition, CHPE will use the hashtag #CHPE to make it easy for the public to find and engage with posts.

The Certificate Holders' Outreach team will identify related organizations, such as local municipalities and community organizations, and request their participation in sharing the CHPE social media posts to increase reach.

3.1.14 Document Repositories

CHPE will maintain printed document repositories at local libraries. The materials may be viewed during regular business hours. See Attachment 1 for locations. All documents will also be posted on the project website, www.chpexpress.com

4 Media:

Due to the size and reach of the project, CHPE anticipates considerable media attention throughout the project's construction phases. The project Certificate Holders' Outreach team will coordinate media requests and availability with the Certificate Holders.

4.1 Media Opportunity Availability:

The project Certificate Holders' Outreach team will accept media requests and work with the larger project team to determine the appropriate project representative to respond to media availability requests.

Media requests will be evaluated case-by-case by the Certificate Holders' Outreach team to determine if members from the larger project team need to be involved in the response.

5 Open House Public Meetings:

The Certificate Holders' Outreach team will coordinate and support open house public meetings for the overland construction areas to re-acquaint the public with the project, provide a timeline of upcoming construction, and inform the local community about what to expect during construction. There will be a series of in-person meetings in an open house format with informational boards, collateral materials like project factsheets, and project team members available to talk to the public and answer questions about the project.

In addition, CHPE will link an online virtual open house to the website and post the same materials and presentations available at the in-person open houses for members of the public who could not attend. CHPE will provide translators and translated materials for these meetings as necessary.

Public meeting notifications will also allow community members to request translators for their specific language needs. All open house materials will include CHPE contact information, how to file a complaint or concern with the State Department of Public Service and the process and timeline for how the inquiry will be addressed.

For each overland project Segment, CHPE will hold at least one public meeting at a location convenient to residents of the affected communities. In addition, CHPE will advertise meetings in local print and online outlets, social media, and municipal calendars.

5.1 Meeting Coordination:

The Certificate Holders' Outreach team will arrange for meeting venues, secure a virtual platform, and manage all aspects of virtual meetings, advertise meetings in print and online, organize meeting materials, attend meetings to oversee and take notes, as well as work with the larger project team on relevant meeting aspects.

CHPE will include a meeting invitation with the notification mailing to affected landowners and interested stakeholders and post the invitation in public places.

5.2 Meeting Materials:

The Certificate Holders' Outreach team will develop meeting materials ahead of each public meeting. Meeting materials will primarily include traditional meeting materials like sign-in sheets, comment cards, wayfinding signs, factsheets, and presentation boards, as applicable.

6 Complaint Resolution and Reporting:

CHPE will use a stakeholder management database to log calls, complaints, and inquiries received from the toll-free phone number, email address, and website, as outlined in Section 3.1. CHPE will log each correspondence listing the date of the inquiry, contact information for inquiring party, question or complaint, and description of the outcome. The inquiry log will be made available to Certificate Holders upon DPS request. The Certificate Holders' Outreach team will notify Certificate Holders if they cannot resolve a complaint after reasonable attempts, so Certificate Holders can report to DPS within three business days, as required by the Certificate.

The Certificate Holders' Outreach team will do its best to address all claims, track responses, and make the best effort to resolve all complaints. However, a resolution may not be possible in every circumstance.

The Certificate Holders' Outreach team has and will regularly report public outreach activities to Certificate Holders monthly or as requested for submission to the DPS Project Manager. The public involvement report will include information tracked by each project partner supporting the public involvement plan. In addition, at the end of each year of construction, the Certificate Holders' Outreach team will provide a report of public outreach activities that year, as well as a look ahead for the next year until the Facility reaches commercial operation and any concerns that might arise during construction.

ATTACHMENT 1

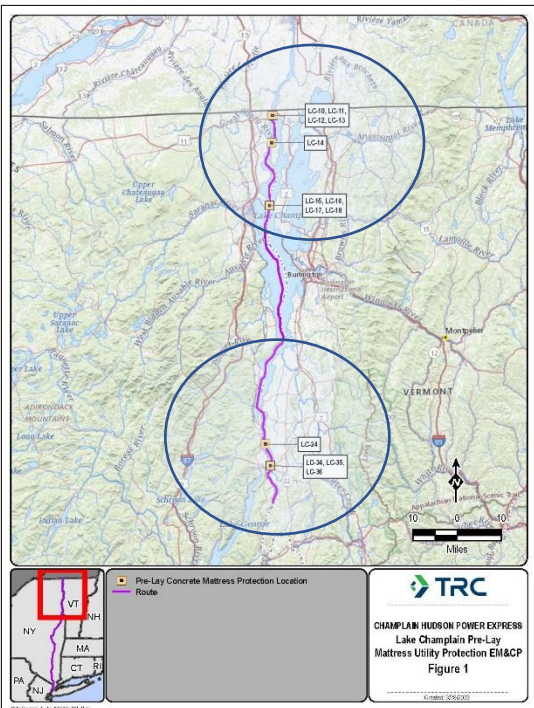
Targeted Public Outreach and Complaint Resolution Plan Segment 18A

1. Summary

This Public Involvement Plan covers what is referred to as “Segment 18A” of the CHPE Project. It describes targeted public outreach before and during the installation of concrete mattresses expected in late summer/fall 2023 to protect co-located infrastructure in select locations before submarine cable installation in Lake Champlain is expected in 2024. The information in this attachment provides more detail on the public outreach activities specific to this Segment. Activities such as the CHPE website, how to receive project updates, and how to file a comment with the Department of Public Service apply to all segments that comprise the entire 339-mile project.

2. Segment Location and Description

Based on information about co-located infrastructure crossings, this EM&CP identifies pre-lay mattress placement at 18 locations in Lake Champlain off the shorelines of the Village of Rouses Point and the Towns of Chazy and Plattsburgh in Clinton County, NY, and the Town of Ticonderoga in Essex County, NY.



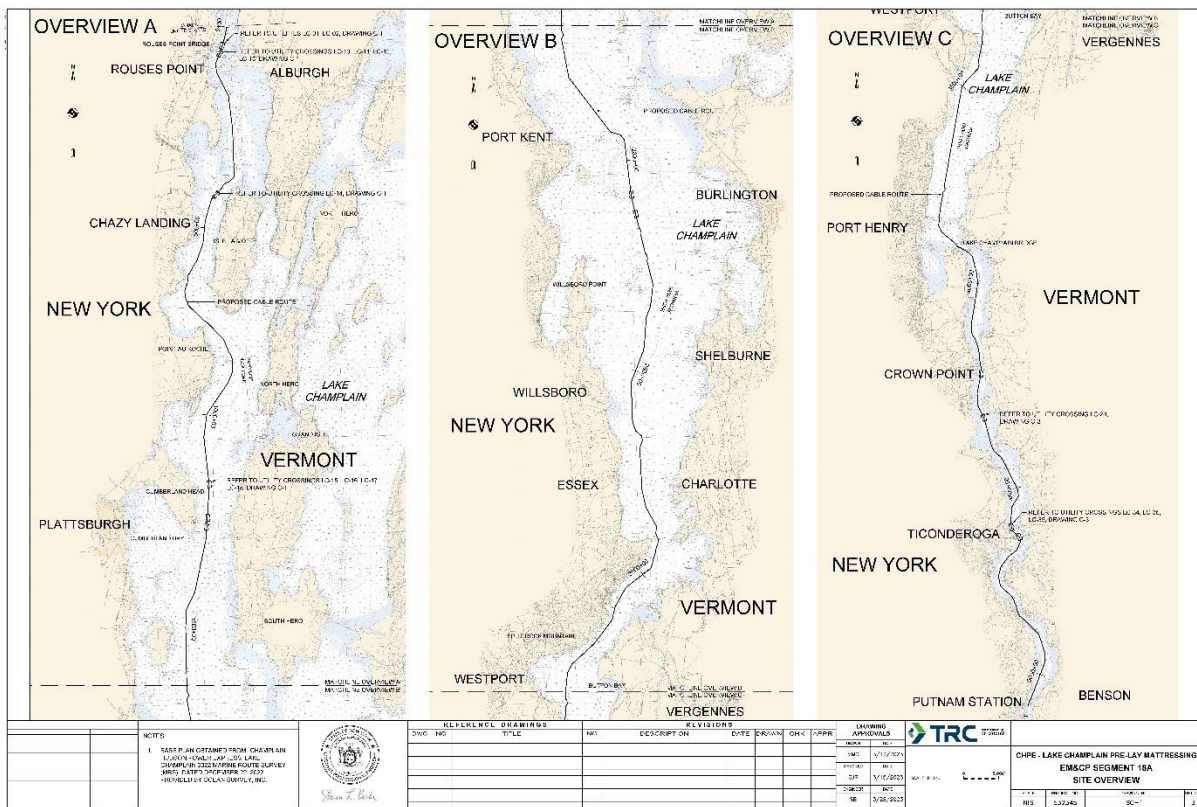
Segment 18A Mattress Locations

To facilitate cable installation while protecting existing underwater utilities, concrete mattresses will be pre-laid along the bottom of Lake Champlain at locations where the proposed cable crosses existing utilities located on or in the lakebed

Pre-lay mattresses will be placed in the second half of 2023.

Pre-lay mattress installation will be a barge-based operation in Lake Champlain involving the strategic laying of mattresses at the bottom of the Lake

A later EM&CP “Segment 18B” will be submitted, detailing the procedures to be implemented while installing the submarine cable in Lake Champlain, including public involvement and complaint resolution.



Locations where CHPE will place the pre-lay mattresses.

3. Community Profile

Champlain is one of the largest freshwater lakes in the United States. It is an ecologically diverse system that serves as a significant recreational hub and a drinking water source. Area residents and visitors cherish the lake for its abundant fishing, swimming, boating, and other recreational activities. The lake also attracts businesses to the region with a workforce that

appreciates the lake's natural beauty, Vermont's working landscapes, and New York's magnificent Adirondack Mountains.

CHPE recognizes the unique and significant natural, cultural, and historic resources of Lake Champlain and how much they contribute to the high quality of life in the New York and Vermont communities along its shores. Tourism, property values, and public health in the region are directly tied to the health and beauty of Lake Champlain. CHPE is committed to helping ensure the lake's future as a premier recreational and economic resource protecting the co-located infrastructure along its route.

5. Public Involvement Activities Specific to Segment 18A

CHPE will continue ongoing communication and close coordination with these officials, the owners of co-located infrastructure, and area stakeholders during the pre-construction, construction, and restoration phases of the project.

Since 2013, CHPE representatives have met with officials throughout the Lake Champlain Region to introduce the project and then again to discuss the need for municipal consent, all of which have been granted. In addition, CHPE has provided local officials with email updates on significant project milestones and responded by telephone, email, and in-person to questions and requests for information.

5a. Outreach to Municipalities

Before the start of construction and as part of the EM&CP process, CHPE will mail official notification to all New York municipalities bordering the entire length of Lake Champlain. CHPE will also conduct a virtual pre-construction meeting with municipal officials in communities near mattress locations. (Highlighted in yellow).

Municipality	Title	First	Last	Office	Street	Town	State	Zip	Telephone
CLINTON COUNTY	County Administrator	Michael	Zurlo	Clinton County Gov. Ctr.	137 Margaret Street	Plattsburgh	NY	12901	518-565-4600
	Highway Superintendent	Karl	Weiss	Clinton County Gov. Ctr.	736 Route 3	Plattsburgh	NY	12901	(518) 565-4040
	County Clerk	John	Zurlo	Clinton County Gov. Ctr.	137 Margaret Street	Plattsburgh	NY	12901	518-565-4700
	Sheriff	David	Favro		25 McCarthy Drive	Plattsburgh	NY	12901	518.565.4333
TOWN OF CHAMPLAIN	Supervisor	Thomas	Trombley	Town Hall	10729 Route 9	Champlain	NY	12919	(518) 298-8160 Ext 201
	Highway Superintendent	Allen	Racine	Town Hall	10729 Route 9	Champlain	NY	12919	(518) 298-8160 Ext 203
	Town Clerk	Julie	Castine	Town Hall	10729 Route 9	Champlain	NY	12919	(518) 298-8160 Ext 210
VILLAGE OF ROUSES POINT	Mayor	John	LaBonte	Village of Rouses Point	139 Lake Street	Rouses Point	NY	12979	518-297-5502
	Clerk	Christopher	Latremore	Village of Rouses Point	139 Lake Street	Rouses Point	NY	12979	518-297-5502
	Fire Chief	Michael	Leblanc	Village of Rouses Point	139 Lake Street	Rouses Point	NY	12979	518-297-5502
	Rouses Point Fire Department				48 Lake Street	Rouses Point	NY	12979	518-297-6431
VILLAGE OF CHAMPLAIN	Mayor	Janet	McFetridge	Village of Champlain	11104 St. Rt. 9	Champlain	NY	12919	518-298-4152
	Superintendent of Public Works	Michael	Jolicoeur	Village of Champlain	11104 St. Rt. 9	Champlain	NY	12919	
	Clerk	Juanita	Munoz	Village of Champlain	11104 St. Rt. 9	Champlain	NY	12919	
TOWN OF CHAZY	Supervisor	Daniel	Vesco	Chazy Town Hall	9631 State Route 9	Chazy	NY	12921	(518) 846-7544 x. 5
	Highway Superintendent	Daniel	Nephew	Chazy Town Hall	9631 State Route 9	Chazy	NY	12921	(518) 846-7130
	Town Clerk	Heather	Giuliano	Chazy Town Hall	9631 State Route 9	Chazy	NY	12921	(518) 846-7544 Ext. 2
TOWN OF BEEKMANTOWN	Supervisor	Norman	Davis	Town Hall	571 Spellman Rd.	W. Chazy	NY	12929	(518) 563-4650 ext. 4
	Highway Superintendent	Roger	Perry	Town Hall	571 Spellman Rd.	W. Chazy	NY	12929	518 563-4188
	Town Clerk	Randy	Lozier	Town Hall	571 Spellman Rd.	W. Chazy	NY	12929	(518) 563-4650 ext. 2
CITY OF PLATTSBURGH	Public Works Department			City Hall	41 City Hall Place	Plattsburgh	NY	12901	518-563-7702
	Mayor	Christopher	Rosenquest	City Hall	41 City Hall Place	Plattsburgh	NY	12901	518-563-7701
TOWN OF PLATTSBURGH	Supervisor	Michael	Cashman	Town Hall	151 Banker Road	Plattsburgh	NY	12901	(518) 562-6813
	Highway Superintendent	Tim	Dubrey	Town Hall	151 Banker Road	Plattsburgh	NY	12901	(518) 562-6881
	Town Clerk	Katie	Kalluche	Town Hall	151 Banker Road	Plattsburgh	NY	12901	(518) 562-6830
ESSEX COUNTY	Chairman Board of Supervisors	Shaun	Gilliland	Essex County	7551 Court Street	Elizabethtown	NY	12932	518-873-3350
	County Manager	Michael	Mascarenas	Essex County	7552 Court Street	Elizabethtown	NY	12932	518-873-3333
	Highway Superintendent	James	Dougan	Essex County	8053 US Rte. 9	Elizabethtown	NY	12932	518-873-3736
TOWN OF TICONDEROGA	Supervisor	Mark	Wright	Town Hall	132 Montcalm Street	Ticonderoga	NY	12883	518-585-6265 Ext. 1
	Highway Superintendent	Sal	Barnao	Town Hall	132 Montcalm Street	Ticonderoga	NY	12883	518-585-7317
	Town Clerk	Tonya	Thompson	Town Hall	132 Montcalm Street	Ticonderoga	NY	12883	518-585-6677
TOWN OF PERU	Supervisor	Brandy	McDonald	Town Hall	3036 Main Street	Peru	NY	12972	518-643-2745 Ext. 5
	Highway Superintendent	Michael	Farrell	Highway Garage	9 Cross Street	Peru	NY	12972	518-643-8657
	Town Clerk	Dianne	Miller	Town Hall	3036 Main Street	Peru	NY	12972	518-643-2745 Ext. 2
TOWN OF AUSABLE	Supervisor	Sandy	Senecal	Town Hall	111 Ausable Street	Keeseville	NY	12944	(518) 834-9052
	Highway Superintendent	Patrick	Akey	Town Garage	111 Ausable Street	Keeseville	NY	12944	(518) 834-3003
	Town Clerk	Bonnie	Hopkins	Town Hall	111 Ausable Street	Keeseville	NY	12944	(518) 834-9035
TOWN OF CHESTERFIELD	Supervisor	Clayton	Barber	Town Hall	1 Vine Street	Keeseville	NY	12944	518-834-9042
	Highway Superintendent	Jay	Champine	Town Hall	1 Vine Street	Keeseville	NY	12944	518-834-9056
	Town Clerk	Bruce	Bourgeois	Town Hall	1 Vine Street	Keeseville	NY	12944	(518) 834-9042 ext 3
TOWN OF WILLSBORO	Supervisor	Shaun	Gilliland	Town Hall	5 Farrell Road	Willsboro	NY	12996	(518) 963-8668 option 2
	Highway Superintendent			Highway Dept.	17 Stower Lane	Willsboro	NY	12996	518 963-4556
	Town Clerk	Sue	Thompson	Town Hall	5 Farrell Road	Willsboro	NY	12996	(518) 963-8668 option 1
TOWN OF ESSEX	Supervisor	Ken	Hughes	Town Hall	2313 Main Street	Essex	NY	12936	518-963-4287
	Highway Superintendent	Bradley	French	Town Garage	1854 Rte 22	Essex	NY	12936	(518) 963-4156
	Town Clerk	Alicia	Kelly	Town Hall	2313 Main Street	Essex	NY	12936	(518) 963-4287 x1
TOWN OF WESTPORT	Supervisor	Michael	Tyler	Town Hall	22 Champlain Ave	Westport	NY	12993	(518) 962-4419
	Highway Superintendent	Dennis	Westover	Town Garage	22 Champlain Ave	Westport	NY	12993	(518) 962-4877
	Town Clerk	Kate	Simmer	Town Hall	22 Champlain Ave	Westport	NY	12993	(518) 962-8360
TOWN OF MORIAH	Supervisor	Tom	Scozzofava	Town Hall	38 Park Place	Port Henry	NY	12974	(518) 546-8631
	Highway Superintendent	Jamie	Willson	Highway Dept.	38 Park Place	Port Henry	NY	12874	(518) 942-7155
	Town Clerk	Rose	French	Town Hall	38 Park Place	Port Henry	NY	12974	518-546-3341
TOWN OF CROWN POINT	Supervisor	Charles	Harrington	Town Hall	17 Monitor Bay Road	Crown Point	NY	12928	518-597-3035
	Highway Superintendent	Kevin	Woods	Town Hall	17 Monitor Bay Road	Crown Point	NY	12928	518-597-3233
	Town Clerk	Linda	Woods	Town Hall	17 Monitor Bay Road	Crown Point	NY	12928	518-597-3235

5b. Document Repositories

CHPE will provide printed copies of public documents for public review at the following locations:

Library	Director	Street	City	State	Zip	Telephone	Email
Rouses Point Dodge Memorial Library	Anne Paulson	144 Lake Street	Rouses Point	NY	12979	(518) 297-6242	library@rousespointny.com
Plattsburgh Public Library	Anne de la Chapelle	19 Oak Street	Plattsburgh	NY	12901	(518)563-0921	PPLInfo@cityofplattsburgh-ny.gov
Black Watch Memorial Library	Heather Johns	99 Montcalm Street	Ticonderoga	NY	12883	(518) 585-7380	blackwatch@townofticonderoga.org

5c. Outreach to Boaters, Fishermen, and Mariners

CHPE will conduct targeted outreach to help those who enjoy on-water activities on Lake Champlain better understand why mattresses are installed to protect co-located infrastructure and the environmental and safety precautions used during the installation.

CHPE will distribute a plain language flyer at marinas, boat launches, and visitor information stations that describes the Segment activities, safety information for boaters, how to learn more about the project, and how to file a comment with the Department of Public Service. The flyer will be in both English and French.

Marinas:

Marina	Street	City	State	Zip	Telephone	Email
Apple Island Marina	6 Featherbed Ln	South Hero	VT	05486	(802) 372-3922	getinfo@appleislandresort.com
Barcombs Marina	90 Montgomery Street	Rouses Point	NY	12979	518 297-6112	mottboat@priemlink1.net
Bay Harbor Marina	278 W Lakeshore Dr	Colchester	VT	05446	(802) 862-4072	
Boatworks Marina	4013 US-9	Plattsburgh	NY	12901	518 561-2134	john@boatworksmarine.com
Buoy 39 Marina Inc	668 Mt Independence Rd	Orwell	VT	05760	(802) 948-2411	
Burlington Community Boathouse Marina	1 College Street	Burlington	VT	05401	(802) 865-3377	
Burlington Harbor Marina	75 Penny Ln	Burlington	VT	05401	(802) 540-6869	
Champlain Bridge Marina	7724 VT-17	Addison	VT	05491	(802) 729-2469	Ray@SavAhov.com
Champlain Marina	982 W Lakeshore Dr	Colchester	VT	05446	(802) 658-4034	info@champlainmarina.com
Chazy Yacht Club	2605 Lake Shore Road	Chazy	NY	12921	518 298-2866	info@chazyyachtclub.com
Chipman Point Marina	68 Chipman Point Rd	Orwell	VT	05760	(802) 948-2288	chipman.marina@gmail.com
Essex Marina	2272 Main Street	Essex	NY	12936	(518) 963-7222	
Ferry Dock Marina	1 King Street Dock	Burlington	VT	05401	(802) 861-2019	ferrydockmarina@gmail.com
Gaines Marina	141 Lake St	Rouses Point	NY	12979	518 297-7000	
Gilbert Brook Marina	715 Lake Shore Road	West Chazy	NY	12992	518 846-7342	info@montysbay.com
Ladd's Landing Marina	412 U.S. Rte 2	Grand Isle	VT	05458	(802) 372-5320	emily@laddslandingmarina.com
Marina At Marble Island	1378 Marble Island Rd	Colchester	VT	05446	(802) 862-6804	
Marina Sieur de Champlain	195 Rang de la Barbotte	Lacolle	QC	JO1 1J0, Canada	1 450-246-3482	
Monty's Bay Marina	562 Lake Shore Road	West Chazy	NY	12992	518 846-7900	montysbaymarina@aol.com
Mooney Bay Marina	15 Mooney Bay Drive	Plattsburgh	NY	12901	518 563-2960	iwvand@mooneybay.net
Moorings Marina	332 W Lakeshore Dr	Colchester	VT	05446	(802) 862-1407	info@mooringsvt.com
North Hero Marina	2253 Pelots Point Rd	North Hero	VT	05474	(802) 372-5953	jackt@northhero.com
Plattsburgh Boat Basin	5 Dock Street	Plattsburgh	NY	12901	518 561-2800	pbb.marina@charter.net
Point Bay Marina	1401 Thompson's Point Rd	Charlotte	VT	05445	(802) 425-2431	skipper@pointbaymarina.com
Rouses Point Yacht Center	129 Lake Street	Rouses Point	NY	12979	518 297-2628	
Sail Adirondacks	54 Harbour Lane	Port Henry	NY	12974		sailadirondacks@gmail.com
Sailing Sea to See	1 Dock Street	Plattsburgh	NY	12901	518 637-2750	Daviddnorthrup@gmail.com
St. Albans Bay Marina	90 Georgia Shore Rd	St Albans Bay	VT	05478	(802) 528-3111	stalbensbaymarina@gmail.com
The Boat Club at Basin Harbor	4800 Basin Harbor Rd	Vergennes	VT	05491	(802) 475-2311	stay@basinharbor.com
Treadwell Bay Marina	214 Bouchard Dr	Plattsburgh	NY	12901	518 563-1321	store@treadwellbay.com
Westport Marina	20 Washington Street	Westport	NY	12993	518 962-4356	thecrew@westportmarina.com

Boat Launches:

CHPE will work with the New York State Department of Environmental Conservation and the Vermont Agency of Nature Resources to post a weather-resistant flyer at these boat launches.

Boat Launch	State	Location	Boat Launch	State	Location
Crown Point	NY	44.029303°N, 73.424589°W	Horicans Access Area	VT	West Shore Road, Alburg
Port Douglas	NY	44.484442°N, 73.417180°W	Kelly Bay Access Area	VT	Hunter North, Alburg
Port Henry	NY	44.052639°N, 73.453864°W	Malletts Bay Access Area	VT	Lake Shore Drive, Colchester
Ticonderoga	NY	43.853894°N, 73.386785°W	Vantines Access Area	VT	West Shore Road, Grand Isle
Westport	NY	44.189231°N, 73.435212°W	Rock River Access Area	VT	US Route 7, Highgate
Willsboro	NY	44.400816°N, 73.389869°W	Holcomb Bay Access Area	VT	Quarry Road, Isle La Motte
Chazy	NY	44.931481°N, 73.387304°W	Van Everest Access Area	VT	Fishing Access Road on Lake Road, Milton
Peru	NY	44.618758°N, 73.445511°W	Kings Bay Access Area	VT	Lake View Drive, North Hero
Ausable Point Campground	NY	44.567452°N, 73.423791°W	Stephensen Point Access	VT	North End Road East, North Hero
Plattsburgh Wilcox Dock	NY	44.707598°N, 73.444915°W	Saint Albans Bay Access	VT	Hathaway Point Road, Saint Albans
Plattsburgh	NY	44.697157°N, 73.442050°W	John Guilmette Access Area	VT	Featherbed Lane, South Hero
Point Au Roche State Park	NY	44.774496°N, 73.387520°W	Keeler Bay Access Area	VT	off Route 2, South Hero
Point Au Roche	NY	44.803084°N, 73.364536°W	Tabor Point Access Area	VT	Sandy Point Road, Swanton

CHPE will distribute the plain-language flyer describing the segment work to the following organizations and locations:

ORGANIZATION	STREET	CITY	STATE	ZIP	TELEPHONE	ZIP
Adirondack Coast Visitors Bureau	7061 Route 9	Plattsburgh	NY	12901	(518) 563-1000	info@goadirondack.com
North Country Chamber of Commerce	7061 State Route 9	Plattsburgh	NY	12901	518.563.1000	
Lake Champlain Committee	208 Flynn Avenue	Burlington	VT	05401	(802) 658-1414	lcc@lakechamplaincommi
Lake Champlain Basin Program	54 West Shore Road	Grand Isle	VT	05458	(802) 372-3213	lcbp@lcbp.org
Ticonderoga Area Chamber of Commerce	94 Montcalm Street	Ticonderoga	NY	12883	518--585-6619	chamberinfo@ticonderog
Lake Champlain Maritime Museum	4472 Basin Harbor Rd	Vergennes	VT	05491	(802) 475-2022	info@lcm.org
Lake Champlain Transportation Company	1 King Street Dock	Burlington	VT	05491	802.864.9804	
Rouses Point Dodge Memorial Library	144 Lake Street	Rouses Point	NY	12979	(518) 297-6242	library@rousespointny.c om
Plattsburgh Public Library	19 Oak Street	Plattsburgh	NY	12901	(518)563-0921	PPLInfo@cityofplattsbur gh-ny.gov
Black Watch Memorial Library	99 Montcalm Street	Ticonderoga	NY	12883	(518) 585-7380	blackwatch@townoftico nderoga.org
Lake Champlain Visitors Center	814 Bridge Road	Crown Point	NY	12928		
Adirondacks Welcome Center	I-87 Northbound	Queensbury	NY	12804		
Adirondack/Beekmantown Gateway Info Center	87 Southbound	West Chazy	NY	12992		

Bait Shop	Street	City	Stat	Zip	Telephone
F.M.B. Bait & Tackle	4133 S Main St	Port Henry	NY	12974	(518) 546-3622
Norm's Bait & Tackle	286 Bridge Rd	Crown Point	NY	12928	(518) 597-3645
Emmons Bait & Tackle	193 U.S. Rte 2	Grand Isle	VT	05458	(802) 372-4531
Ray's Bait & Tackle	49 North Street	Burlington	VT	05401	(802) 658-7928
Big River Bait and Tackle	2093 Silver St	Hinesburg	VT	05461	(802) 482-3028
Dattilio's Guns & Tackle	794 Shelburne Rd	So. Burlington	VT	05403	(802) 862-5516
West Marine	861 Williston Rd	So. Burlington	VT	05403	(802) 865-8064
Craig Elliot	1044 Sweet Hollow Road	Sheldon	VT	05483	802 933-4921
Emmons Supermarket Inc.	193 US Rt.2	Grand Isle	VT	05458	802 372-4531
Island Bait	Box 95	Grand Isle	VT	05458	802 363-9116
Lake View Lodge	8369 US Rt. 2	No. Hero	VT	05474	802 372-4077
Martin's General Store	2934 US RT 7	Highgate Springs	VT	05460	(802) 868-4459

5d. Outreach to Emergency Service Agencies

Before construction starts, CHPE will notify law enforcement, fire, and emergency medical service agencies as required and provide CHPE and DPS contact information. In addition, CHPE will inform agencies of significant changes in construction schedules.

Municipality	Department	Title	First	Last	Street	City	Sta	Zip	Telephone
Vermont State Police	Marine Division	Sergeant	Jake	Metayer	2777 St. George Road	Williston	VT	05495	802-878-7111 Ext. 2011
Grand Isle County Sheriff	Marine Division	Sheriff	Ray	Allen	10 Island Circle	Grand Isle	VT	05458	802) 524-5993.
New York State Police	Troop B Zone 1					Plattsburgh			518-563-3761
New York State Police	Troop B Zone 3					Crown Point			518-873-2750
Clinton County Sheriff	Marine Division	Sheriff	David	Favro	25 McCarthy Drive	Plattsburgh	NY	12901	518.565.4333
NYS DEC Conservation Officers	Region 5	Captain	Daniel	Darrah	Route 86	Ray Brook	NY	12977	(518) 897-1326
Clinton County	Office of Emergency Services	Director	Eric	Day	16 Emergency Services Drive	Plattsburgh	NY	12903	518-565-4791
Essex County	Sheriff	Sheriff	David	Reynolds	702 Stowersville Road	Lewis	NY	12950	518-873-6915
Essex County	Emergency Services	Director	Wendy	Sayward	702 Stowersville Road	Lewis	NY	12950	(518) 873-3900
Plattsburgh	Police Department	Chief	Nathan	York	45 Pine Street	Plattsburgh	NY	12901	518-563-3411
Plattsburgh	Fire Department	Chief	Scott	Lawliss	65 Cornelia Street	Plattsburgh	NY	12901	518-561-3780
Rouses Point	Fire Department	Chief			48 Lake Street	Rouses Point	NY	12979	518-297-5502
Chazy	Fire Department	Chief			9666 Route 9	Chazy	NY	12921	518-846-7326
Ticonderoga	Fire Department	Chief			60 Montcalm S	Ticonderoga	NY	12883	(518) 585-3456
Champlain Valley Physicians Hospital					75 Beekman St	Plattsburgh	NY	12901	(518) 561-2000
Elizabethtown Community Hospital	Ticonderoga Campus				101 Adirondack Drive	Ticonderoga	NY	12883	(518) 585-3700
US Coast Guard Station Burlington					1 Depot Street	Burlington	VT	05401	(802) 951-6792