

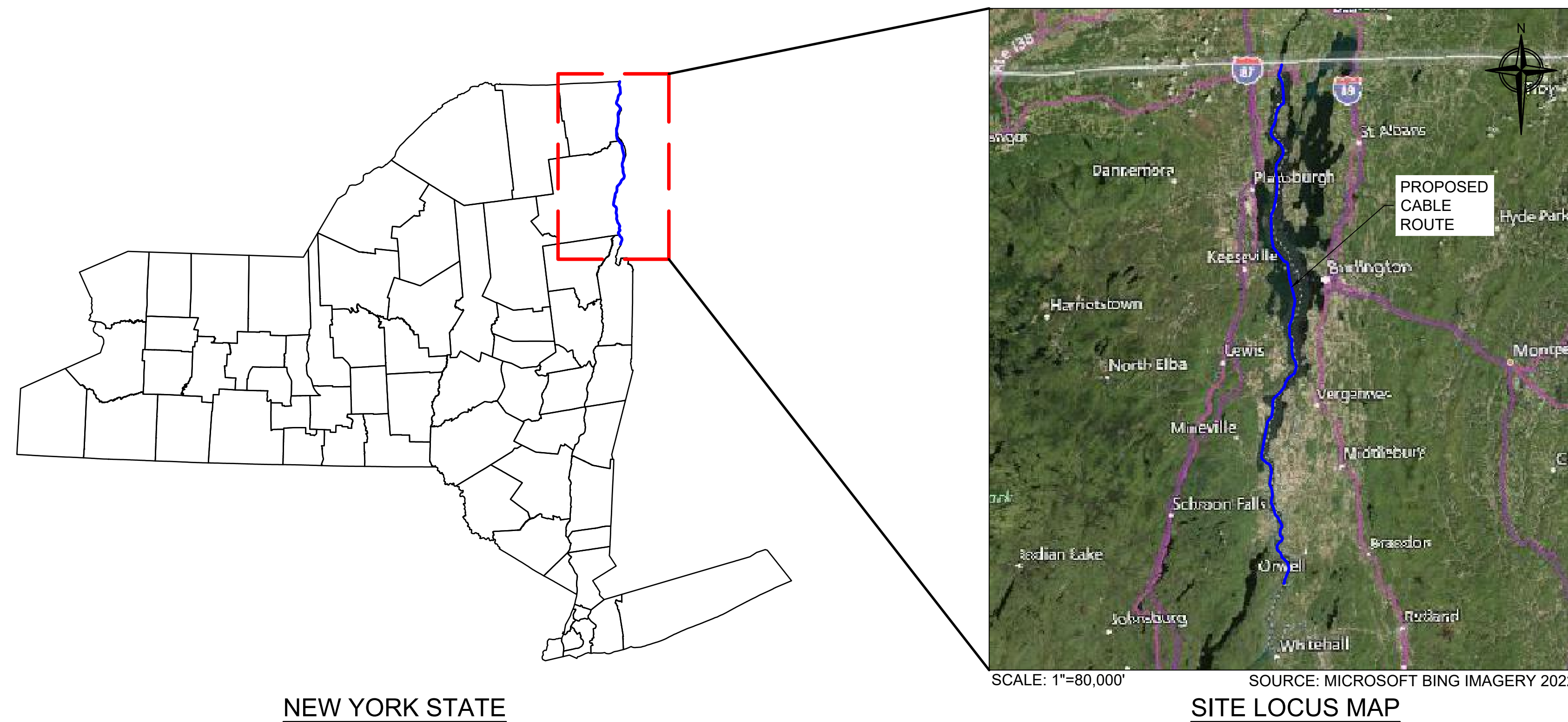


Appendix A: Pre-Lay Mattress Location Drawings

CHPE - LAKE CHAMPLAIN PRE-LAY MATTRESSING DRAWINGS EM&CP SEGMENT 18A

PREPARED FOR:
CALDWELL MARINE INTERNATIONAL
1333 CAMPUS PARKWAY
WALL, NEW JERSEY 07753

APRIL 4, 2023



PREPARED BY:



FIRM REGISTRATION NO.:
NY 0010187

DRAWING INDEX

DRAWING NUMBER	Sheet Number	Sheet Title
-	1	COVER
N-1	2	NOTES & TYPICAL DETAILS
SO-1	3	SITE OVERVIEW
SO-2	4	CO-LOCATED INFRASTRUCTURE SUMMARY TABLE
C-1	5	LC-01, 02, 10, 11, 12, 13, 14, 23, 24
C-2	6	LC-25, 26, 27, 28, 29, 32, 33, 34, 35, 36, 37

FOR PERMITTING ONLY

REFERENCE NOTES

- LAKE CHAMPLAIN BASE PLAN AND BATHYMETRIC DATA PREPARED BY OCEAN SURVEYS INC. AND PROVIDED BY CALDWELL MARINE IN FEBRUARY 2023.
- CHARTED UTILITIES MAPPED BY OCEAN SURVEYS AND INCLUDED IN ABOVE REFERENCED BASE PLAN. CHARTED UTILITY LOCATIONS SHOWN IN GRAY WITH ITALICIZED TEXT.
- UTILITY CROSSING LOCATION INFORMATION PROVIDED BY THE CERTIFICATE HOLDERS IN MARCH 2023.

COORDINATE SYSTEM NOTES:

- HORIZONTAL: UTM WITH NAD83 DATUM, ZONE 18, U.S. SURVEY FOOT (UTM83-18F).
- VERTICAL: NAVD88.

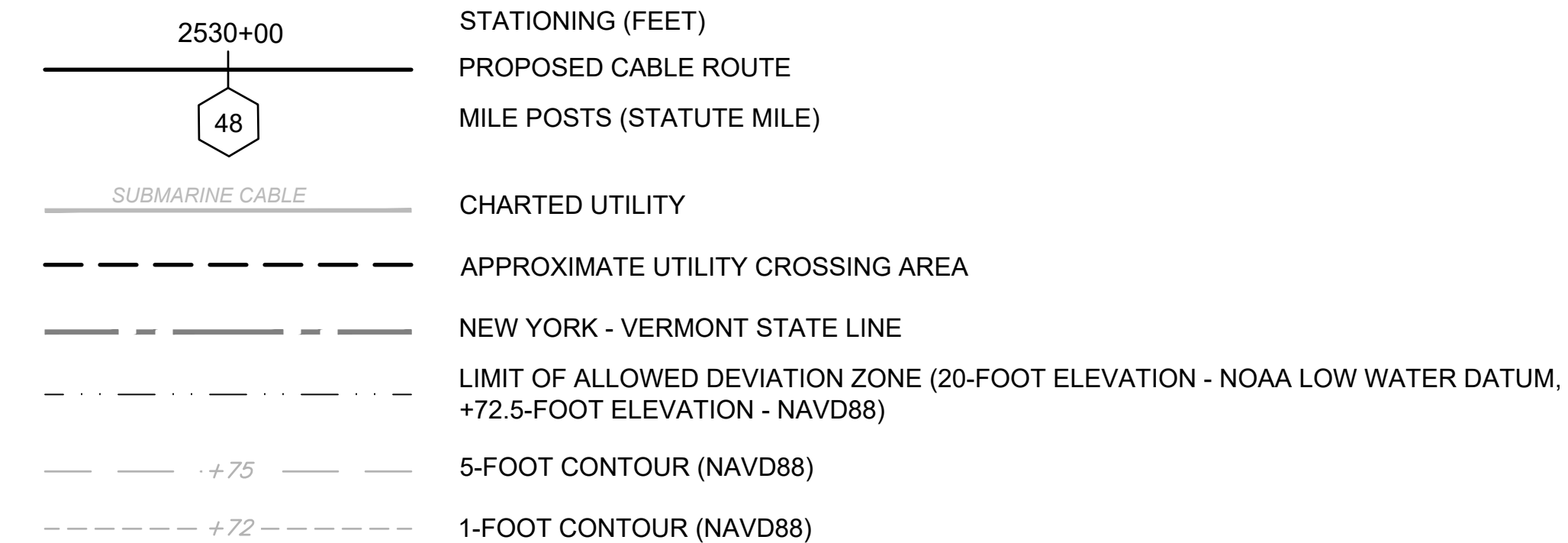
INSTALLATION NOTES:

- REFER TO SECTION 11.2 OF THE PROCEDURAL DOCUMENT, CHAMPLAIN HUDSON POWER EXPRESS, SHALLOW MATTRESS PLACEMENT (<150FT WATERDEPTH), (LAKE CHAMPLAIN SEGMENT), DATED JANUARY 30, 2023, PREPARED BY CALDWELL MARINE INTERNATIONAL, LLC, APPENDIX F OF THE EM&CP, FOR ADDITIONAL PRE-LAY MATTRESSING INSTALLATION DETAILS.
- FOR UTILITY CROSSINGS IN WATER DEPTHS GREATER THAN (>) OR EQUAL TO (=) 150', PROPOSED USE OF POLY-SHELL CLADDING (URADUCT PRODUCT OR SIMILAR) SHALL BE INSTALLED ON PROPOSED SUBMARINE CABLE DURING SUBMARINE CABLE INSTALLATION OVER THE EXISTING UTILITY CROSSING LOCATION(S). REFER TO SECTION 11.2 OF THE PROCEDURAL DOCUMENT, CHAMPLAIN HUDSON POWER EXPRESS, SHALLOW MATTRESS PLACEMENT (<150FT WATERDEPTH), (LAKE CHAMPLAIN SEGMENT), DATED JANUARY 30, 2023, PREPARED BY CALDWELL MARINE INTERNATIONAL, LLC, APPENDIX F, NOTE:2-BULLET 2 OF THE EM&CP.

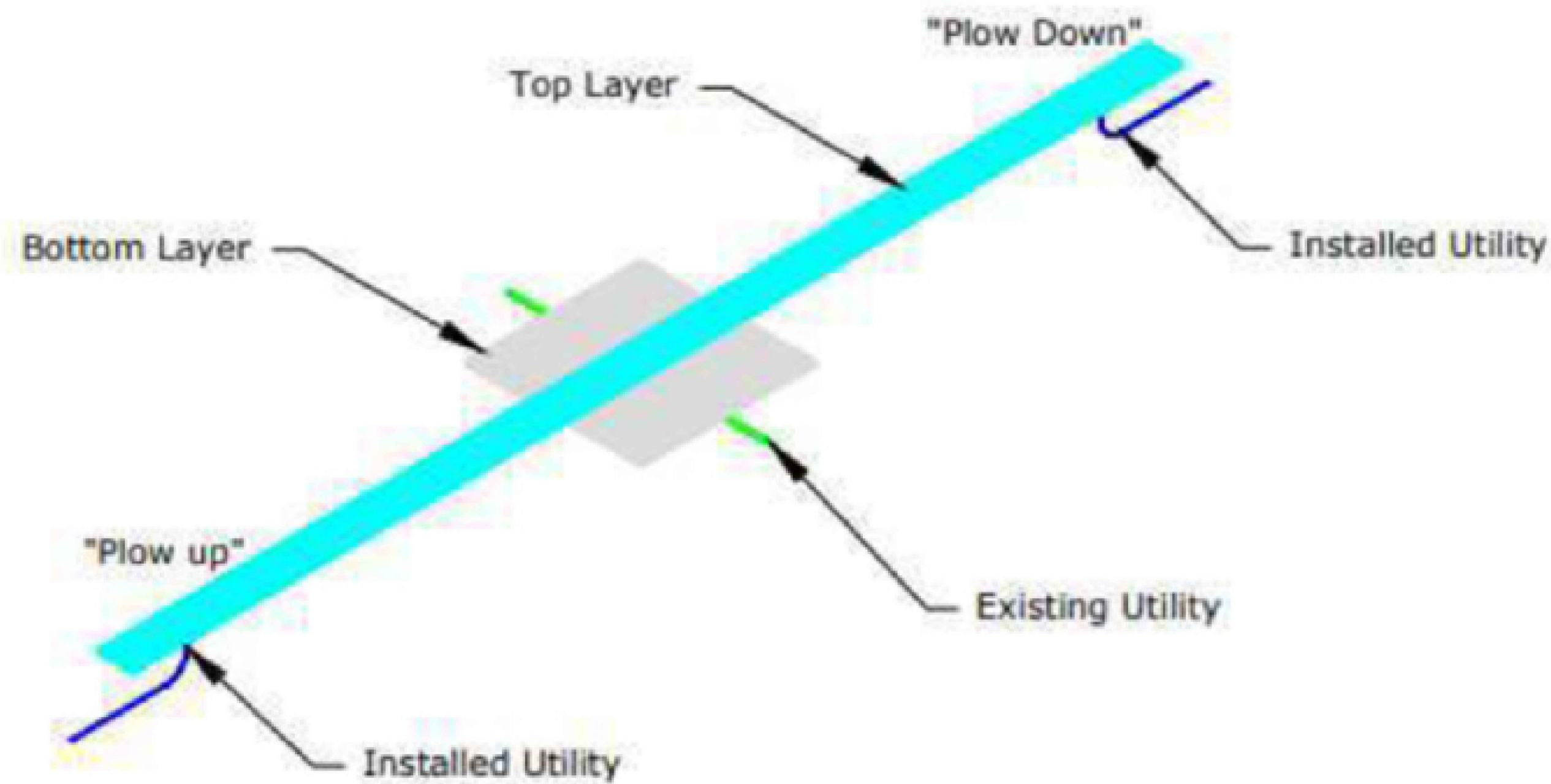
DOCUMENT USE:

- THESE PLANS AND THE CORRESPONDING CAD DOCUMENTS ARE INSTRUMENTS OF PROFESSIONAL SERVICE PREPARED BY TRC ENGINEERS, INC., AND SHALL NOT BE USED, IN WHOLE OR IN PART, FOR ANY PURPOSE OTHER THAN FOR WHICH IT WAS CREATED WITHOUT THE EXPRESSED WRITTEN CONSENT OF TRC ENGINEERS, INC. ANY UNAUTHORIZED USE, REUSE, MODIFICATION, OR ALTERATION, INCLUDING AUTOMATED CONVERSION OF THIS DOCUMENT, SHALL BE AT THE USER'S SOLE RISK WITHOUT LIABILITY OR LEGAL EXPOSURE TO TRC ENGINEERS, INC.
- CONTRACTOR SHALL NOT RELY SOLELY ON ELECTRONIC VERSIONS OF PLANS, SPECIFICATIONS, OR DATA FILES THAT ARE OBTAINED FROM THE DESIGNERS OR OWNER, BUT SHALL VERIFY LOCATIONS OF PROJECT FEATURES IN ACCORDANCE WITH THE PAPER COPIES OF THE PLANS AND SPECIFICATIONS THAT ARE SUPPLIED AS PART OF THE CONTRACT DOCUMENTS.
- SYMBOLS AND LEGENDS OF PROJECT FEATURES ARE GRAPHIC REPRESENTATIONS, AND ARE NOT NECESSARILY SCALED TO THEIR ACTUAL DIMENSIONS OR LOCATIONS ON THE DRAWINGS. THE CONTRACTOR SHALL REFER TO THE DETAIL SHEET DIMENSIONS, MANUFACTURER'S LITERATURE, SHOP DRAWINGS, AND FIELD MEASUREMENTS OF SUPPLIED PRODUCTS FOR LAYOUT OF THE PROJECT FEATURES.

LEGEND

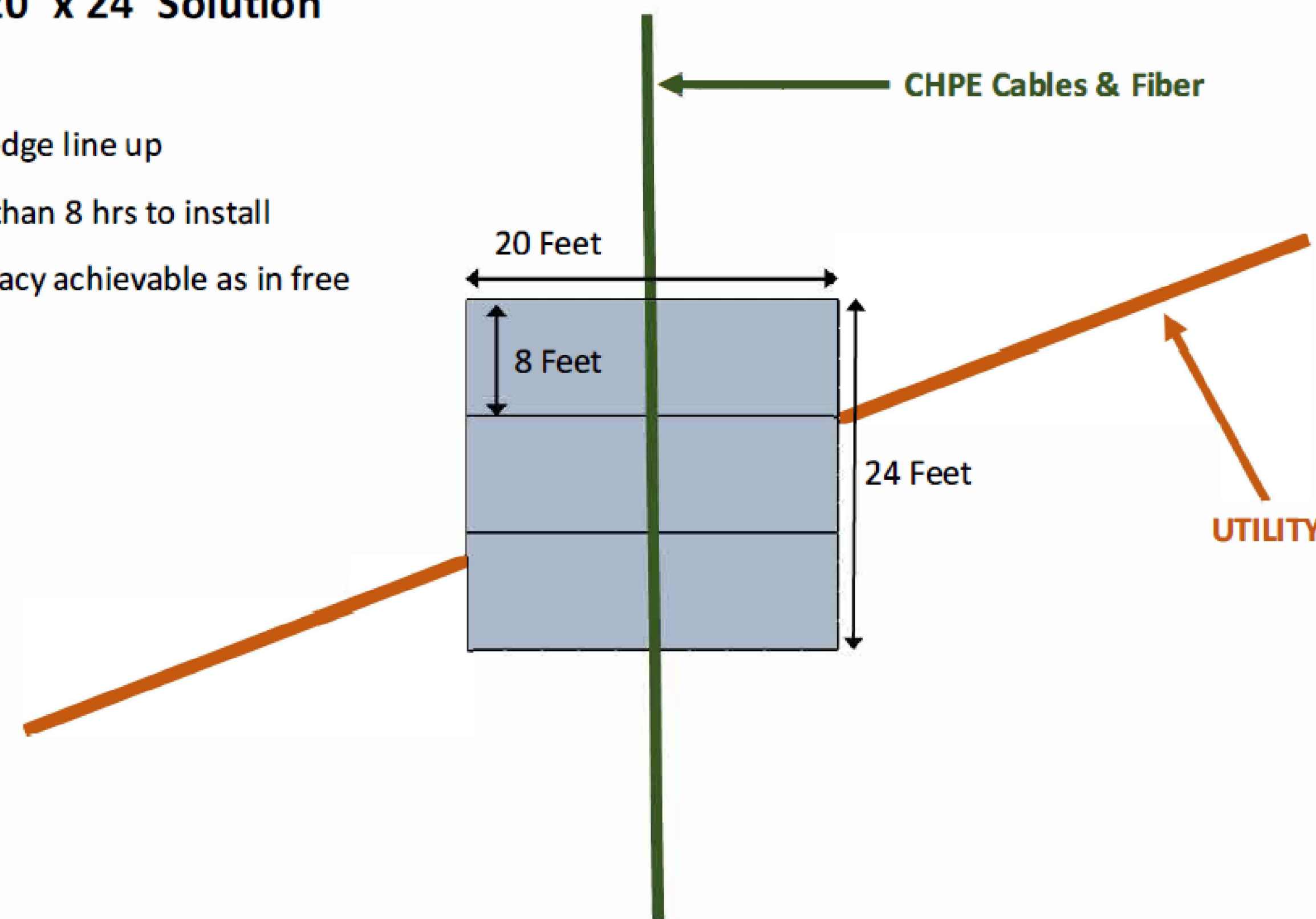


ISOMETRIC VIEW



3 Mattress 20' x 24' Solution

- Easy edge to edge line up
- Estimate less than 8 hrs to install
- Position accuracy achievable as in free lay mode



REFERENCE NOTE:

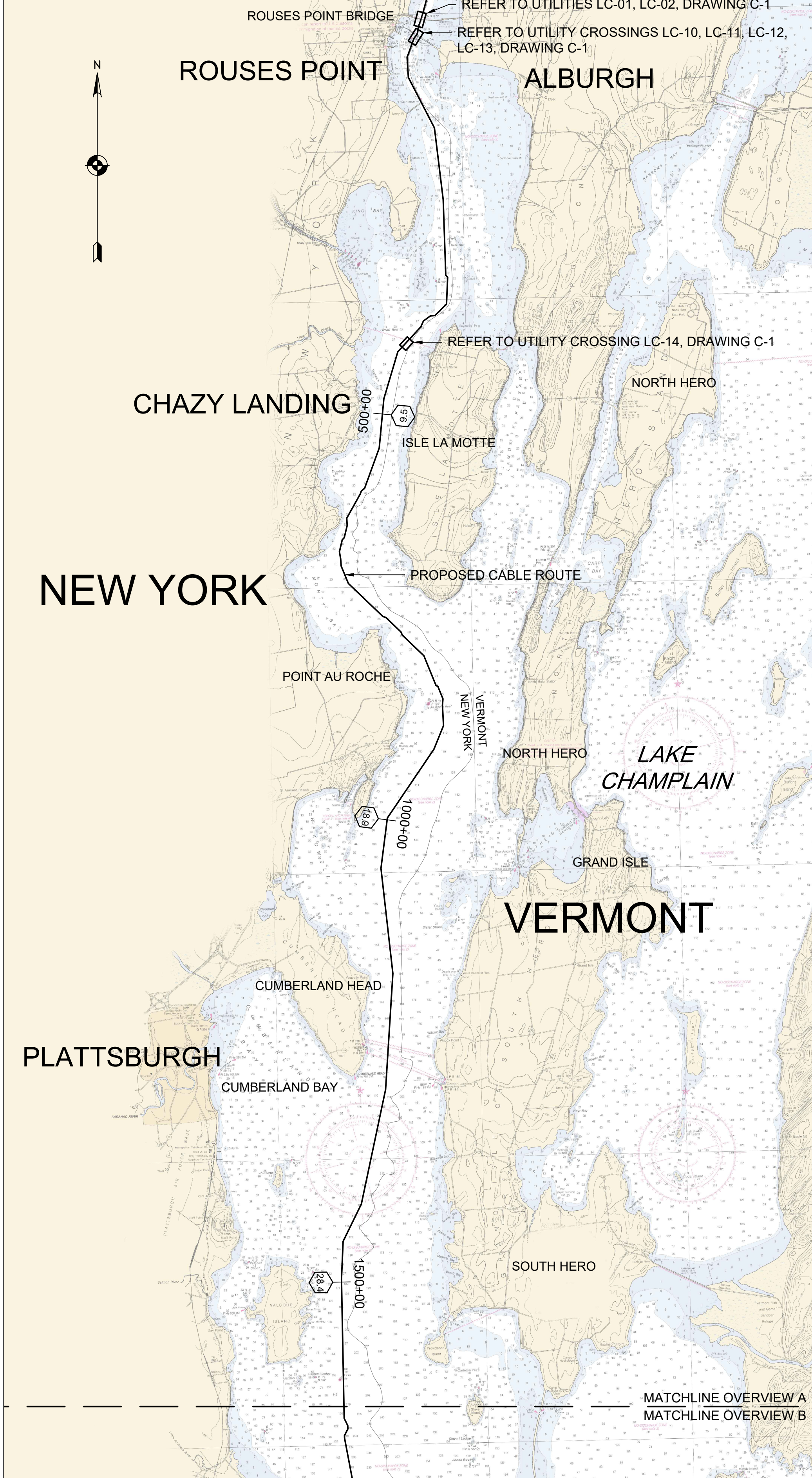
- TYPICAL CONCRETE MATTRESS UTILITY CROSSING DETAILS FROM EM&CP APPENDIX E - DOCUMENTATION OF CI CONSULTATIONS, ATTACHMENT 3 - MARINE CI CROSSING MATTRESS DETAIL R1, PROVIDED BY WSP ON MARCH 28, 2023.

1 TYPICAL CONCRETE MATTRESS UTILITY CROSSING DETAILS
2 SCALE: NTS

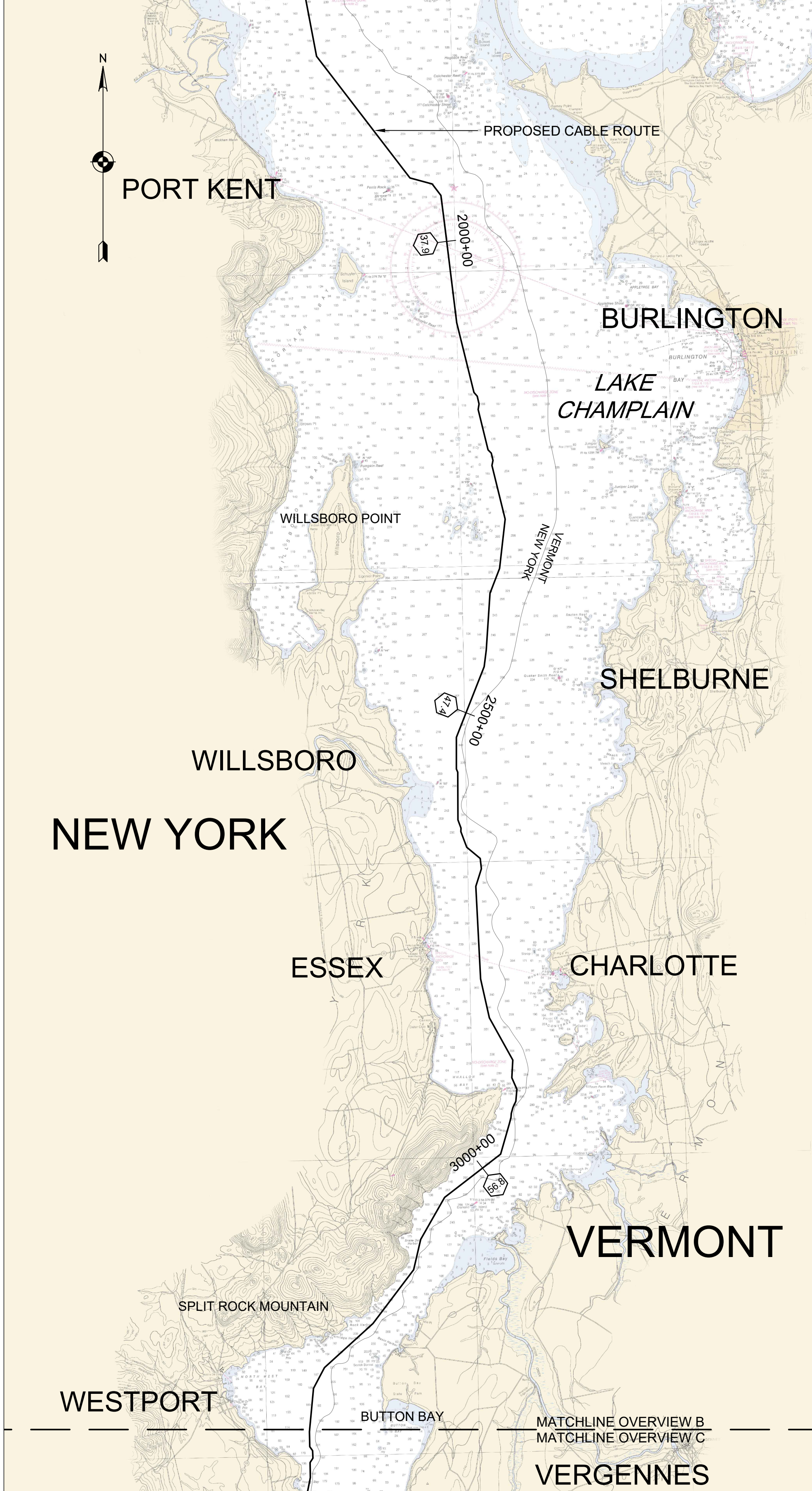
	REFERENCE DRAWINGS							REVISIONS			DRAWING APPROVALS			CHPE - LAKE CHAMPLAIN PRE-LAY MATTRESSING EM&CP SEGMENT 18A NOTES & TYPICAL DETAILS			
	DWG. NO.	TITLE	NO.	DESCRIPTION	DATE	DRAWN	CHK	APPR	DRAWN	DATE	DRAWN	DATE					

DATE PLOTTED: 04/11/2023 10:45:12 AM

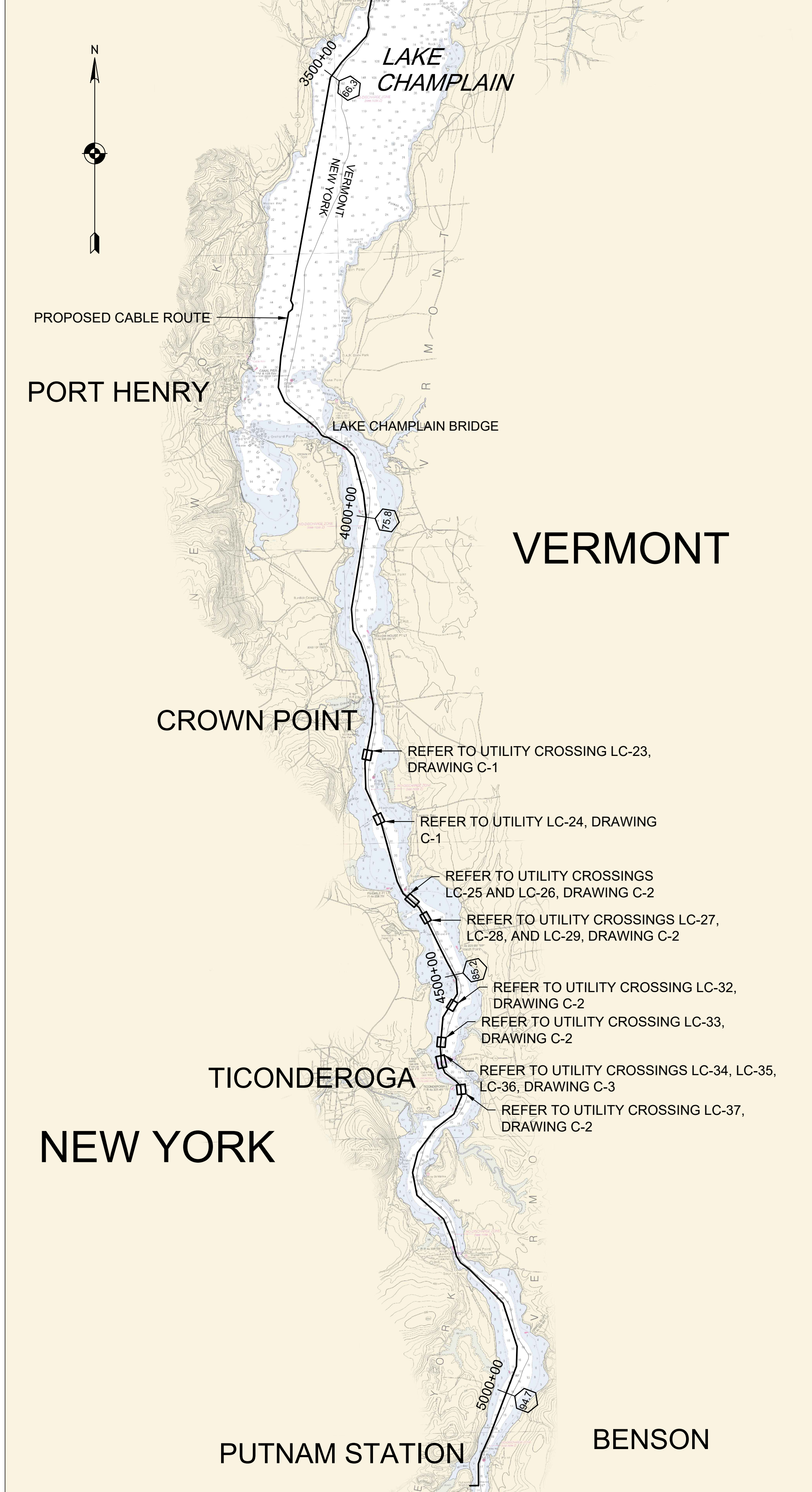
OVERVIEW A



OVERVIEW B



OVERVIEW C



NOTES:

1. BASE PLAN OBTAINED FROM "CHAMPLAIN HUDSON POWER EXPRESS, LAKE CHAMPLAIN 2022 MARINE ROUTE SURVEY (MRS)" DATED DECEMBER 22, 2022 PROVIDED BY OCEAN SURVEY, INC.



Sharon L. Burke

REFERENCE DRAWINGS

DWG. NO.	TITLE

REVISIONS

NO.	DESCRIPTION	DATE	DRAWN	CHK	APPR

DRAWING APPROVALS

DRAWN	DATE
MMO	3/12/2023
CHECKED	DATE
GJR	3/15/2023
ENGINEER	DATE
SB	4/4/2023

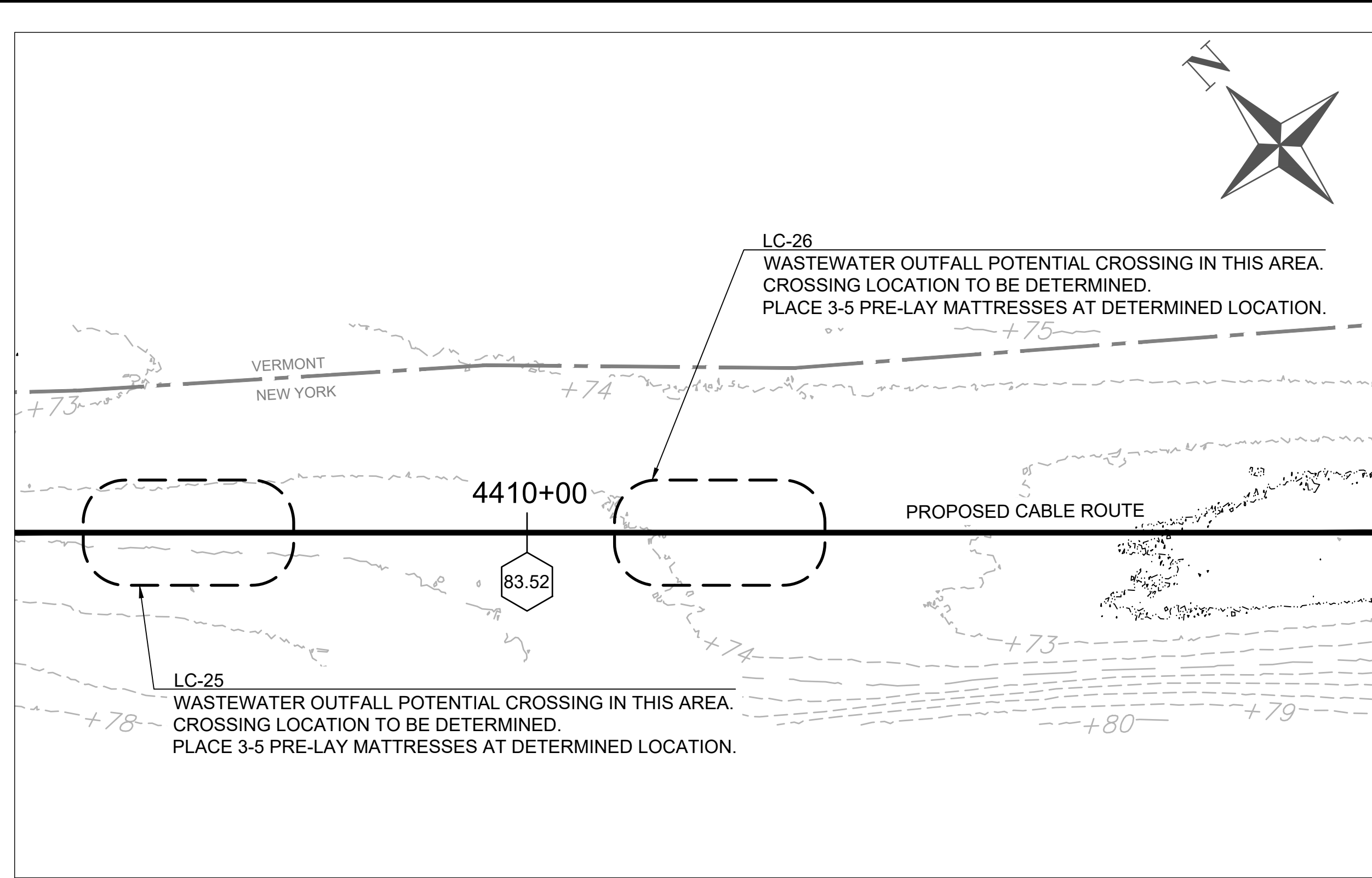


SCALE PLAN: 0 8,000'

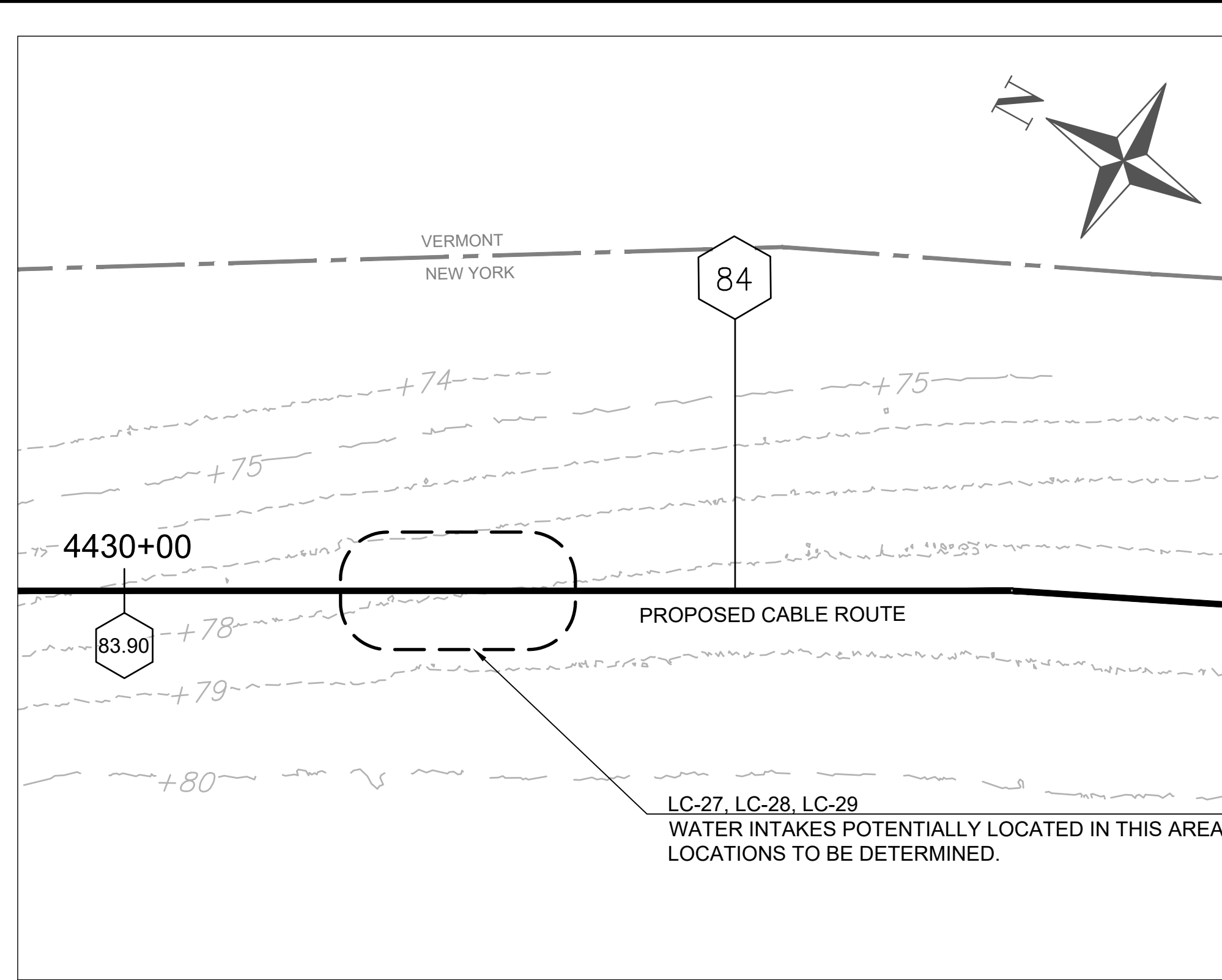
CHPE - LAKE CHAMPLAIN PRE-LAY MATTRESSING EM&CP SEGMENT 18A SITE OVERVIEW

SCALE	PROJECT NO.	DRAWING NO.	SHT. NO.
NTS	532345	SO-1	3

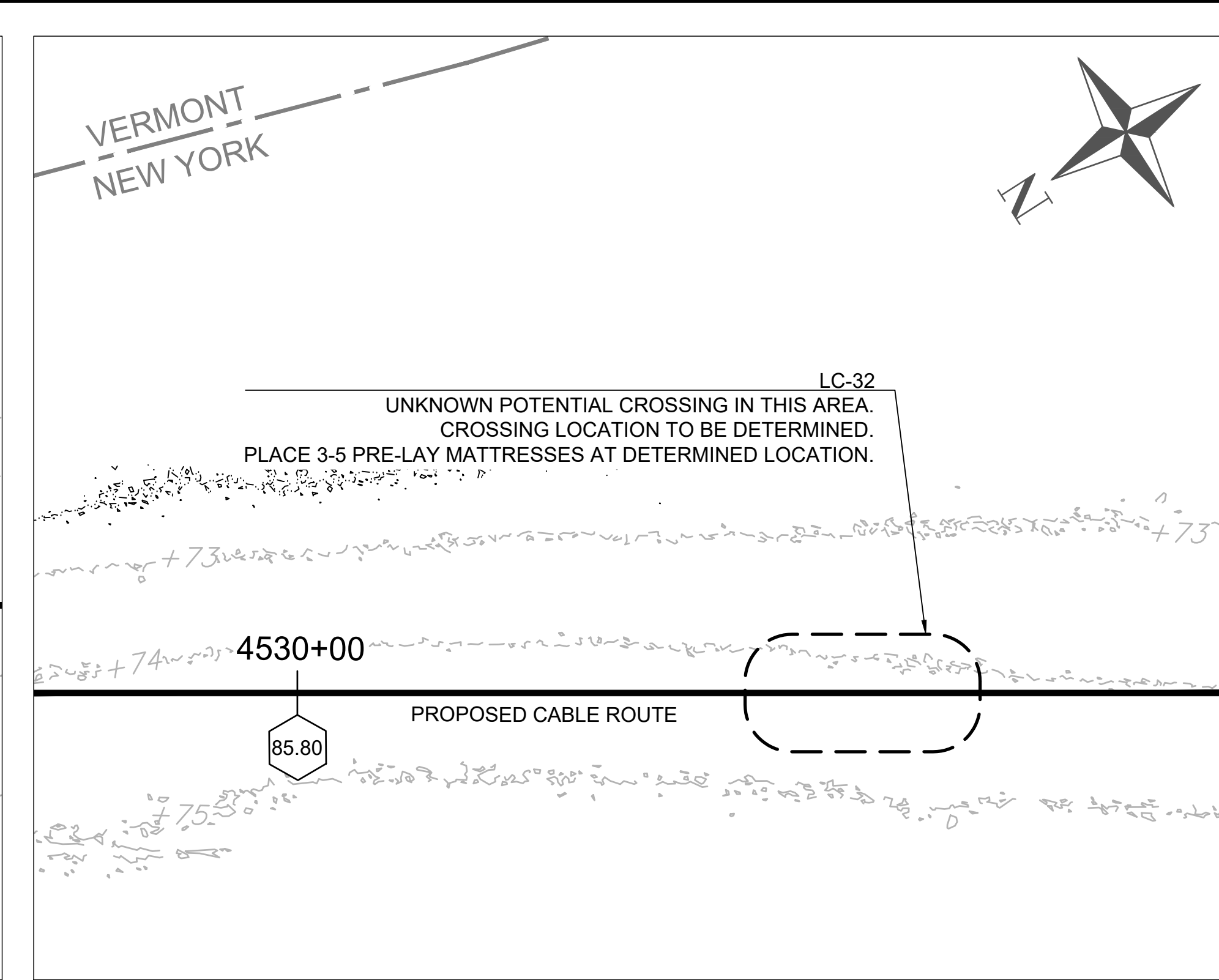
USER_DWGNAME



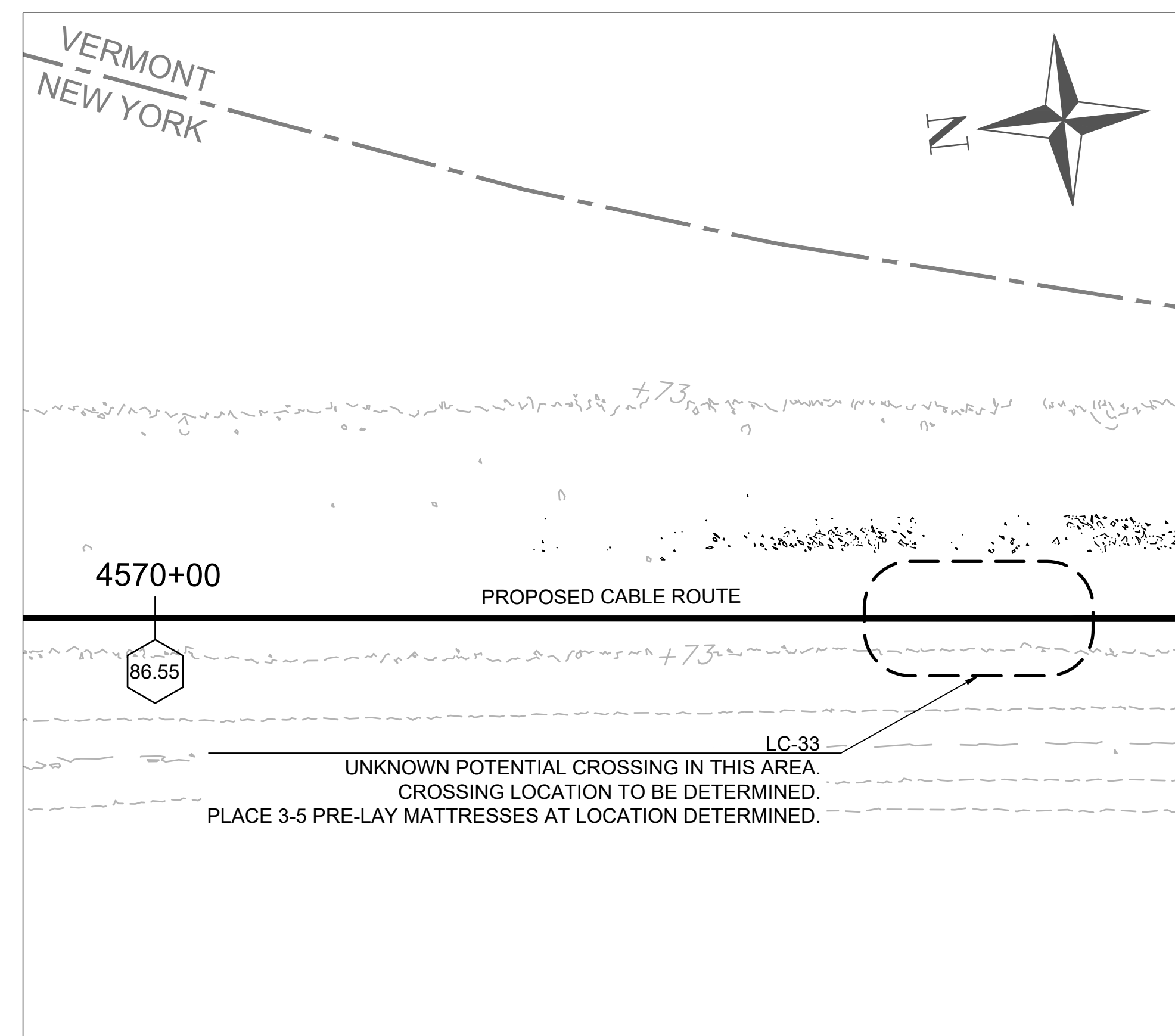
1
6 UTILITY CROSSINGS LC-25 AND LC-26
SCALE: 1" = 100'



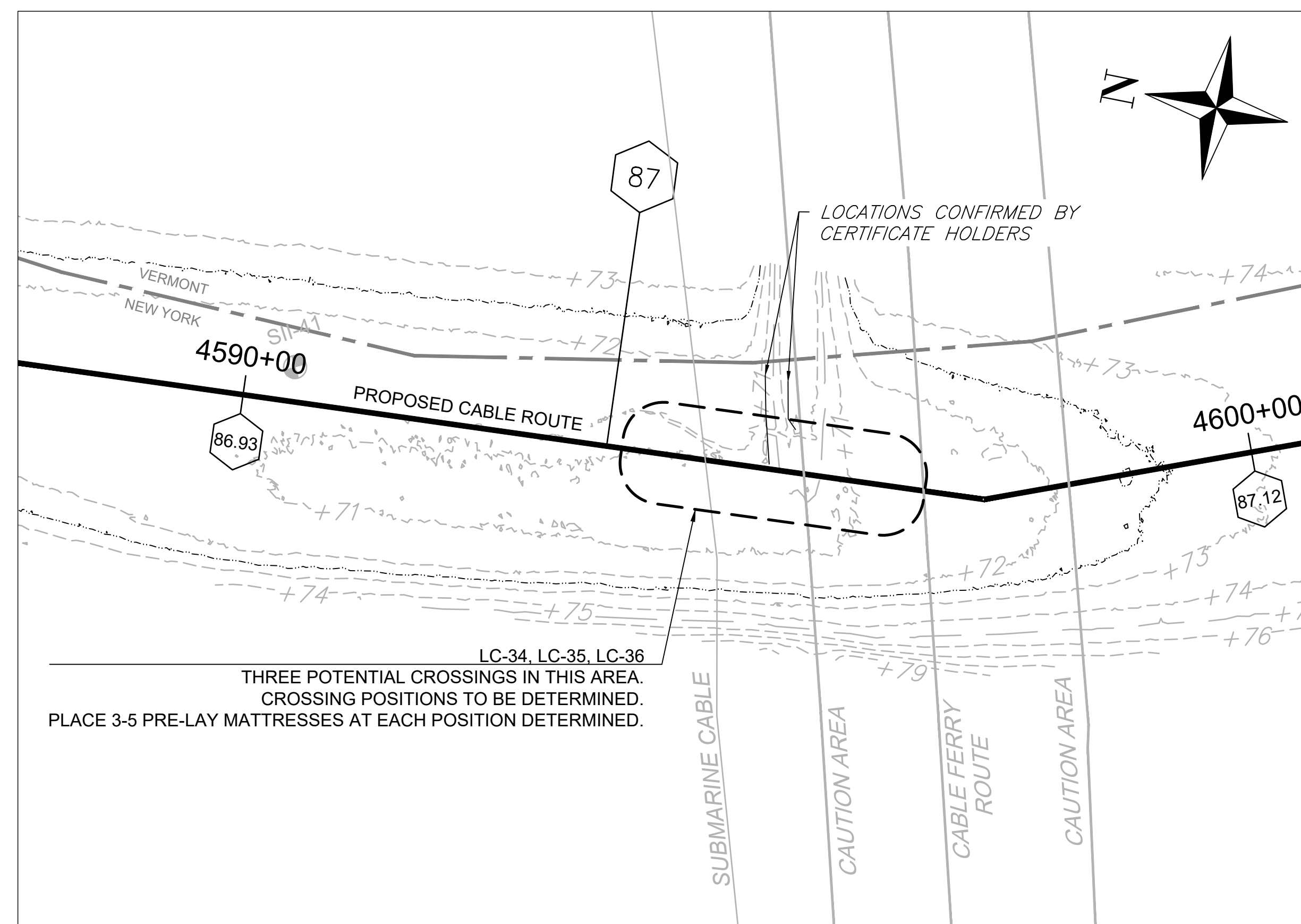
2
6 UTILITY CROSSINGS LC-27 LC-28 AND LC-29
SCALE: 1" = 100'



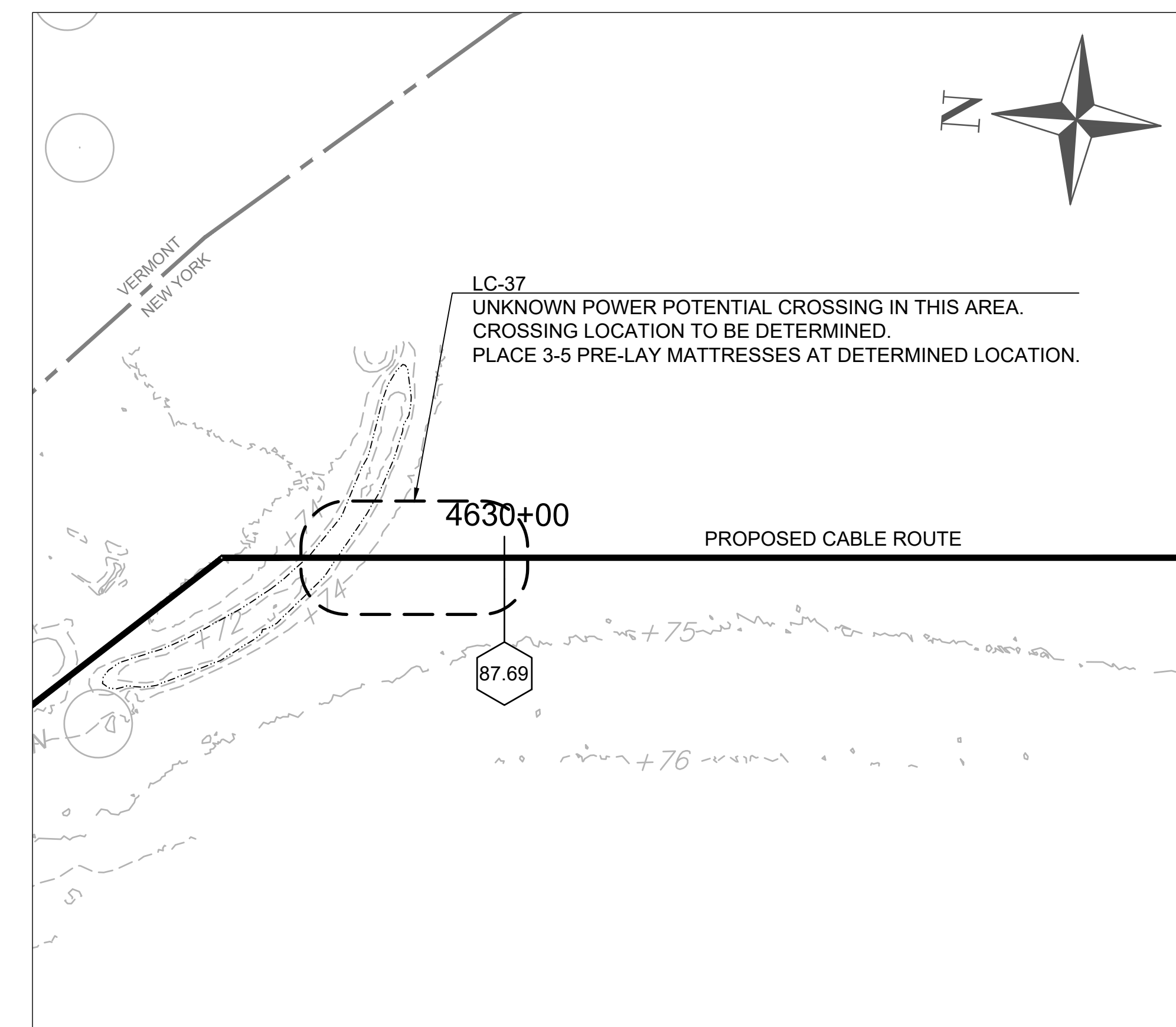
3
6 UTILITY CROSSING LC-32
SCALE: 1" = 100'



4
6 UTILITY CROSSING LC-33
SCALE: 1" = 100'



5
6 UTILITY CROSSINGS LC-34 LC-35 LC-36
SCALE: 1" = 100'



6
6 UTILITY CROSSING LC-37
SCALE: 1" = 100'



Simon L. Burke

REFERENCE DRAWINGS

DWG. NO.	TITLE

REVISIONS

NO.	DESCRIPTION	DATE	DRAWN	CHK	APPR

DRAWING APPROVALS

DRAWN	DATE
MMO	3/12/2023
CHECKED	DATE
GJR	3/15/2023
ENGINEER	DATE
SB	4/4/2023



SCALE PLAN: 0 100'

CHPE - LAKE CHAMPLAIN PRE-LAY MATTRESSING
EM&CP SEGMENT 18A
LC-25, 26, 27, 28, 29, 32, 33, 34, 35, 36, 37

SCALE	PROJECT NO.	DRAWING NO.	SHT. NO.
1" = 100'	532345	C-2	6

USER: D:\NAME